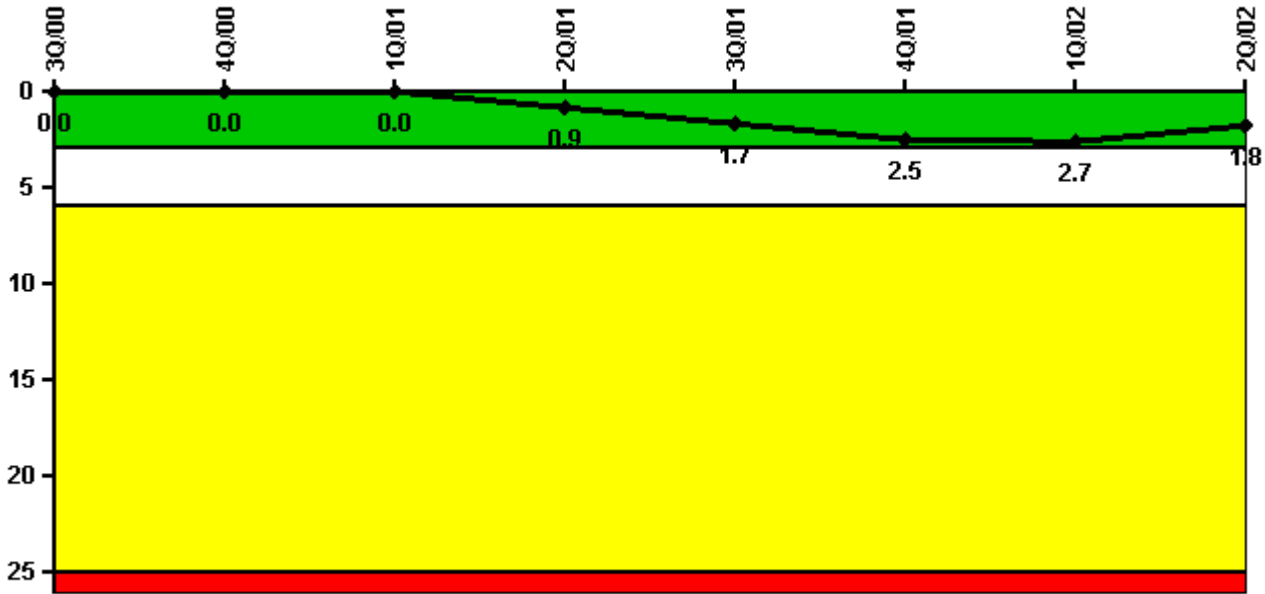


Watts Bar 1

2Q/2002 Performance Indicators

Licensee's General Comments: none

Unplanned Scrams per 7000 Critical Hrs



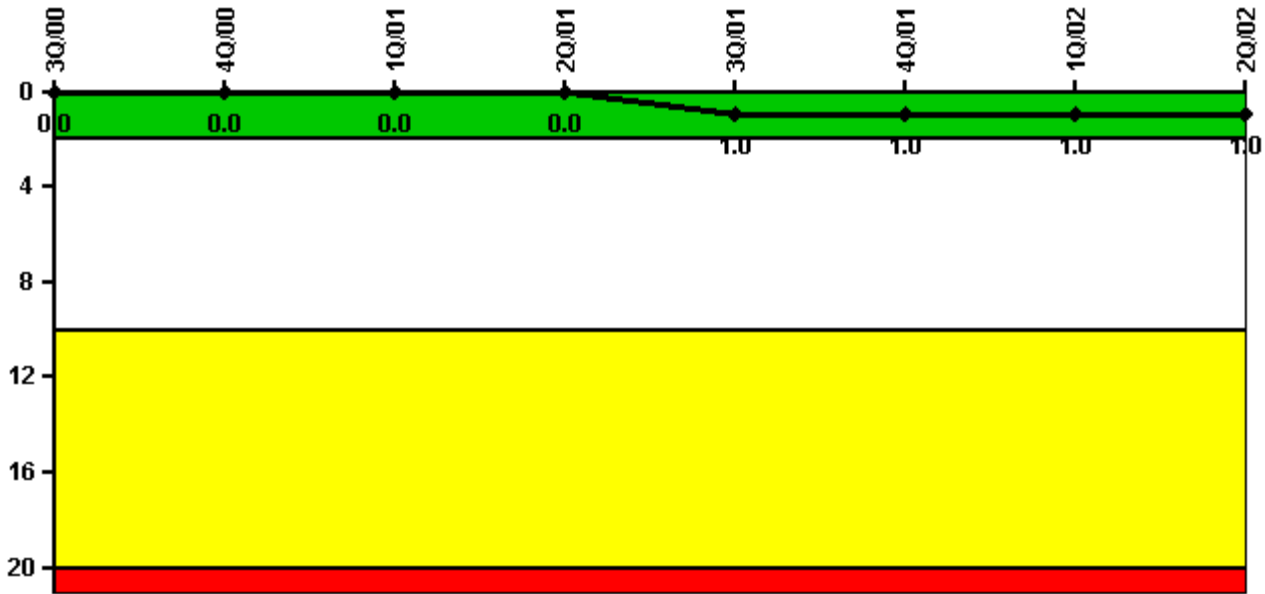
Thresholds: White > 3.0 Yellow > 6.0 Red > 25.0

Notes

Unplanned Scrams per 7000 Critical Hrs	3Q/00	4Q/00	1Q/01	2Q/01	3Q/01	4Q/01	1Q/02	2Q/02
Unplanned scrams	0	0	0	1.0	1.0	1.0	0	0
Critical hours	1704.0	2084.3	2160.0	2152.5	1956.9	2180.9	1611.3	2060.8
Indicator value	0	0	0	0.9	1.7	2.5	2.7	1.8

Licensee Comments: none

Scrams with Loss of Normal Heat Removal



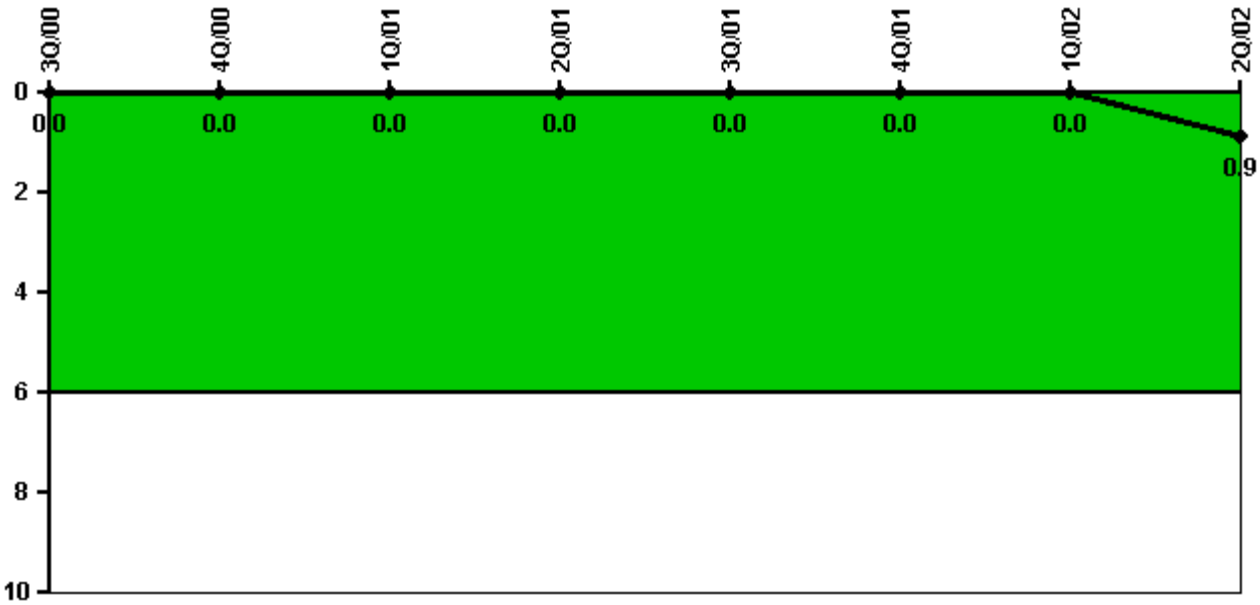
Thresholds: White > 2.0 Yellow > 10.0 Red > 20.0

Notes

Scrams with Loss of Normal Heat Removal	3Q/00	4Q/00	1Q/01	2Q/01	3Q/01	4Q/01	1Q/02	2Q/02
Scrams	0	0	0	0	1.0	0	0	0
Indicator value	0	0	0	0	1.0	1.0	1.0	1.0

Licensee Comments: none

Unplanned Power Changes per 7000 Critical Hrs



Thresholds: White > 6.0

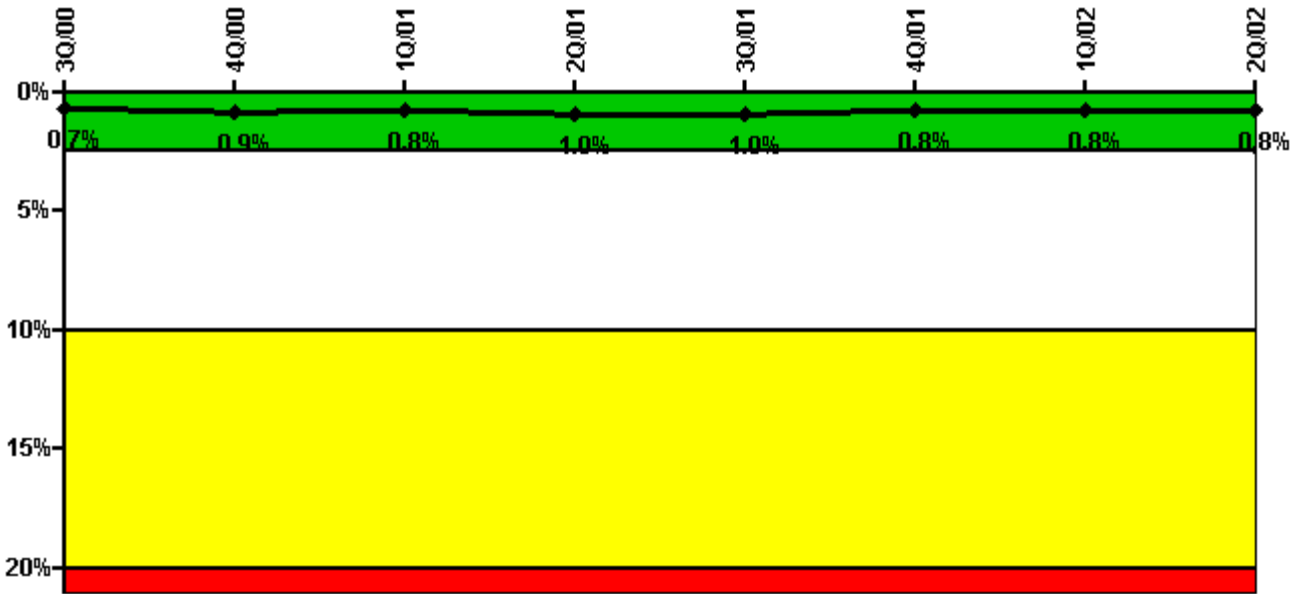
Notes

Unplanned Power Changes per 7000 Critical Hrs	3Q/00	4Q/00	1Q/01	2Q/01	3Q/01	4Q/01	1Q/02	2Q/02
Unplanned power changes	0	0	0	0	0	0	0	1.0
Critical hours	1704.0	2084.3	2160.0	2152.5	1956.9	2180.9	1611.3	2060.8
Indicator value	0	0	0	0	0	0	0	0.9

Licensee Comments:

2Q/02: Watts Bar experienced a forced outage in May (5/3/02 - 5/9/02) which was required for the replacement of a leaking pressurizer spray bypass valve (1-BYV-68-555). Total duration of the outage was 140.37 hours.

Safety System Unavailability, Emergency AC Power, >2EDG



Thresholds: White > 2.5% Yellow > 10.0% Red > 20.0%

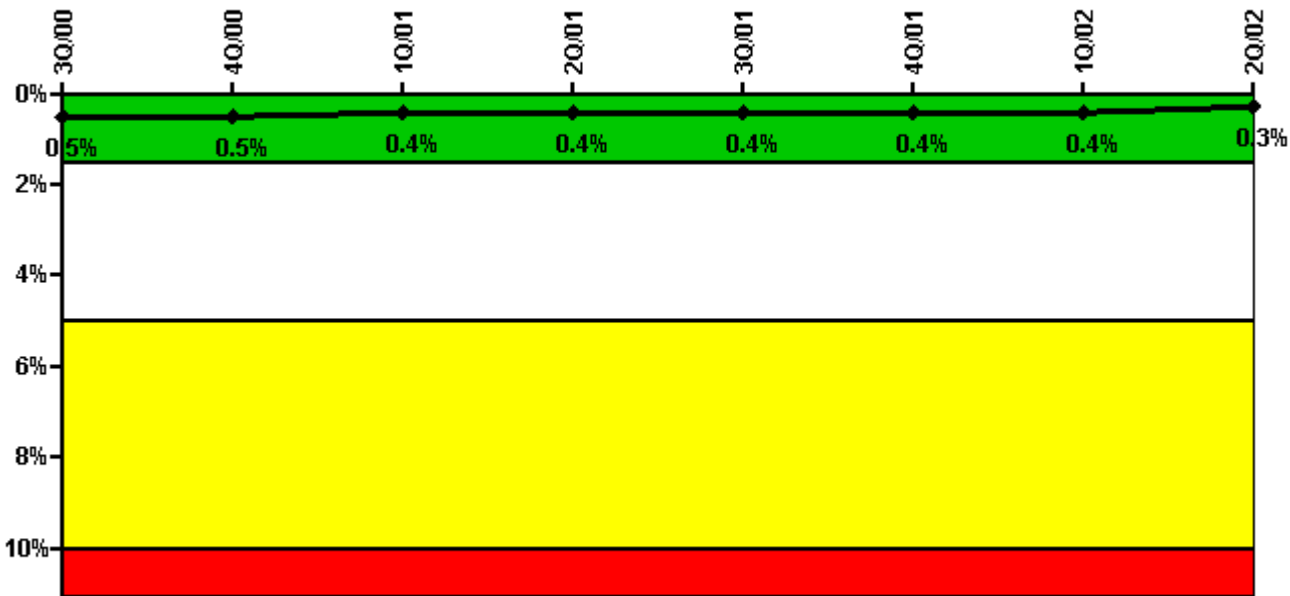
Notes

Safety System Unavailability, Emergency AC Power, >2EDG	3Q/00	4Q/00	1Q/01	2Q/01	3Q/01	4Q/01	1Q/02	2Q/02
Train 1								
Planned unavailable hours	1.70	44.64	2.24	30.21	2.03	14.73	2.14	4.55
Unplanned unavailable hours	0	0	0	8.52	0	0	0	0
Fault exposure hours	0	0	0	1.75	0	0	0	0
Effective Reset hours	0	0	0	0	0	0	0	0
Required hours	2086.48	2209.00	2160.00	2183.00	2208.00	2209.00	1938.06	2183.00
Train 2								
Planned unavailable hours	1.84	149.95	3.44	59.69	2.05	1.15	1.85	1.37
Unplanned unavailable hours	0	0	0	0	0	0	0	0
Fault exposure hours	0	0	0	0	0	0	0	0
Effective Reset hours	0	0	0	0	0	0	0	0
Required hours	1867.37	2209.00	2160.00	2183.00	2123.63	2209.00	1902.72	2183.00
Train 3								
Planned unavailable hours	2.04	26.27	2.80	47.37	2.42	7.01	2.00	1.39
Unplanned unavailable hours	0	0	0	0	0	0	0	0
Fault exposure hours	0	0	0	0	0	0	0	0
Effective Reset hours	0	0	0	0	0	0	0	0
Required hours	2086.48	2209.00	2160.00	2183.00	2208.00	2209.00	1938.06	2183.00
Train 4								
Planned unavailable hours	16.98	31.78	2.84	40.30	4.88	9.20	6.45	0.62
Unplanned unavailable hours	0	0	0	0	0	0	0	0
Fault exposure hours	0	0	0	0	0	0	0	0
Effective Reset hours	0	0	0	0	0	0	0	0
Required hours	1867.37	2209.00	2160.00	2183.00	2123.63	2209.00	1902.72	2183.00

Indicator value	0.7%	0.9%	0.8%	1.0%	1.0%	0.8%	0.8%	0.8%

Licensee Comments: none

Safety System Unavailability, High Pressure Injection System (HPSI)



Thresholds: White > 1.5% Yellow > 5.0% Red > 10.0%

Notes

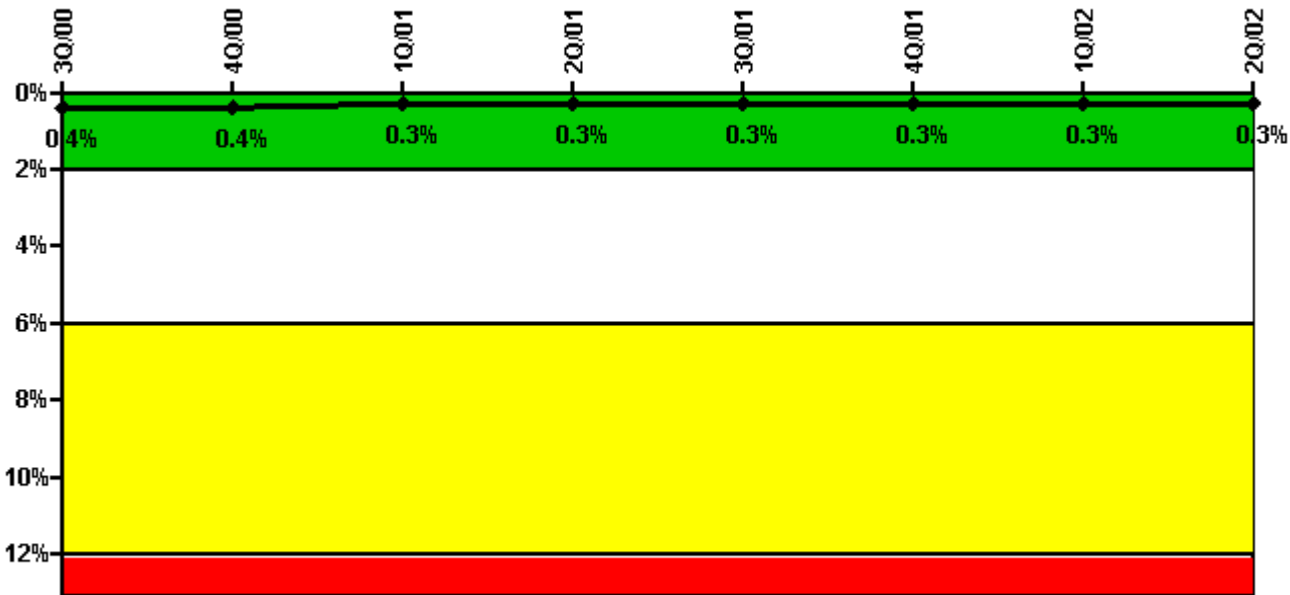
Safety System Unavailability, High Pressure Injection System (HPSI)	3Q/00	4Q/00	1Q/01	2Q/01	3Q/01	4Q/01	1Q/02	2Q/02
Train 1								
Planned unavailable hours	7.90	0.40	21.00	0.10	0.20	0.80	4.30	0.20
Unplanned unavailable hours	0	0	0	0	0.30	0	0	0
Fault exposure hours	0	0	0	0	0	0	0	0
Effective Reset hours	0	0	0	0	0	0	0	0
Required hours	1715.10	2145.00	2160.00	2183.00	2123.60	2209.00	1678.00	2099.70
Train 2								
Planned unavailable hours	0	0	0	13.70	0.30	0	0.30	0.10
Unplanned unavailable hours	0	0	0	0	0.10	0	0	0
Fault exposure hours	0	0	0	0	0	0	0	0
Effective Reset hours	0	0	0	0	0	0	0	0
Required hours	1711.10	2147.00	2160.00	2183.00	2014.00	2209.00	1665.50	2087.30
Train 3								

Planned unavailable hours	0.50	2.10	1.60	1.30	5.60	16.10	2.40	4.00
Unplanned unavailable hours	0	0	0	0	0.30	0	0	0
Fault exposure hours	0	0	0	0	0	0	0	0
Effective Reset hours	0	0	0	0	0	0	0	0
Required hours	1711.10	2137.80	2160.00	2183.00	2014.00	2209.00	1662.70	2087.30
Train 4								
Planned unavailable hours	0.60	2.70	0.50	1.00	20.60	2.40	1.70	0.80
Unplanned unavailable hours	0	0	0	0	0	0	0	0
Fault exposure hours	0	0	0	0	0	0	0	0
Effective Reset hours	0	0	0	0	0	0	0	0
Required hours	1711.10	2137.80	2160.00	2183.00	2014.00	2209.00	1662.70	2087.30
Indicator value	0.5%	0.5%	0.4%	0.4%	0.4%	0.4%	0.4%	0.3%

Licensee Comments:

2Q/02: The above data does not include the potential unscheduled unavailability impact resulting from the identification of missing guard pipe access covers for a steam driven AFW line on 3/7/2002. TVA is still evaluating the EQ impact on system components from a theoretical break of the line. (Reference LER 390/2002-002 and Draft FAQ 30.7).

Safety System Unavailability, Heat Removal System (AFW)



Thresholds: White > 2.0% Yellow > 6.0% Red > 12.0%

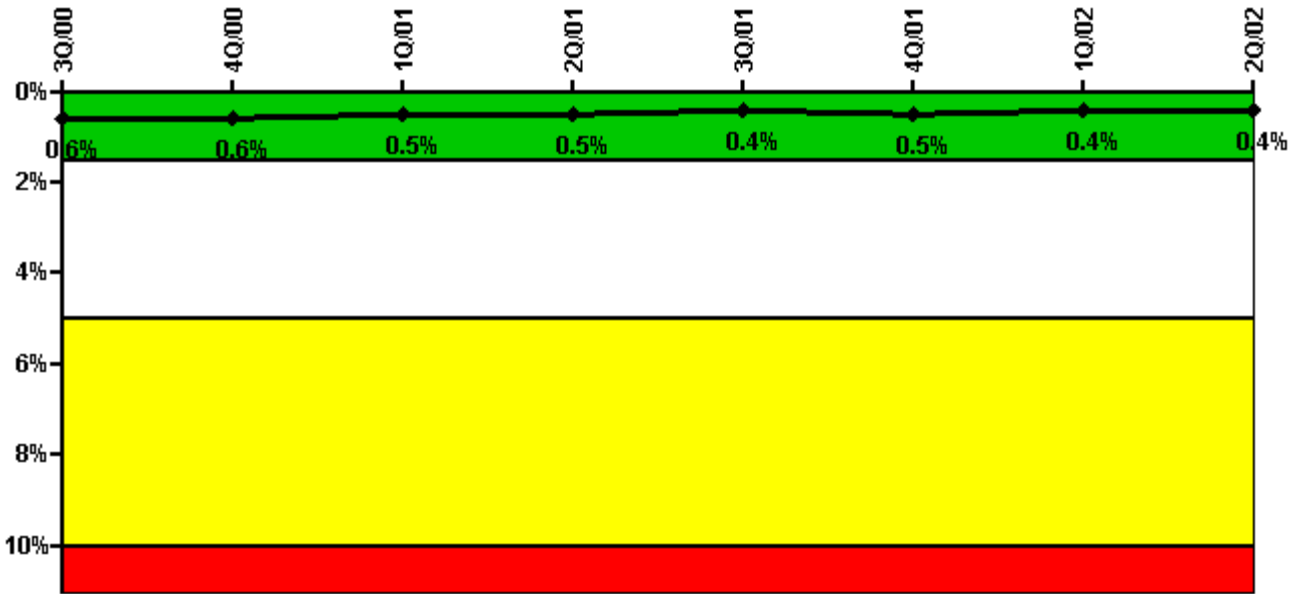
Notes

Safety System Unavailability, Heat Removal System (AFW)	3Q/00	4Q/00	1Q/01	2Q/01	3Q/01	4Q/01	1Q/02	2Q/02
Train 1								
Planned unavailable hours	0	0.80	0.10	0.02	3.70	22.20	0.33	0.50
Unplanned unavailable hours	0	0	0	0	0.90	0	0	0
Fault exposure hours	0	0	0	0	0	0	0	0
Effective Reset hours	0	0	0	0	0	0	0	0
Required hours	1714.10	2113.80	2160.00	2183.00	2014.00	2209.00	1680.80	2099.70
Train 2								
Planned unavailable hours	25.70	6.10	0.50	29.40	8.00	11.83	0.63	0
Unplanned unavailable hours	0	0	0	0	1.10	0	0	0
Fault exposure hours	0	0	0	0	0	0	0	0
Effective Reset hours	0	0	0	0	0	0	0	0
Required hours	1714.10	2113.80	2160.00	2183.00	2014.00	2209.00	1680.80	2099.70
Train 3								
Planned unavailable hours	18.50	11.65	6.40	0.70	2.00	8.04	4.07	0.03
Unplanned unavailable hours	0	0	0	0	0	0	0	0
Fault exposure hours	0	0	0	0	0	0	0	0
Effective Reset hours	0	0	0	0	0	0	0	0
Required hours	1711.10	2113.80	2160.00	2183.00	2014.00	2209.00	1662.60	2087.30
Indicator value	0.4%	0.4%	0.3%	0.3%	0.3%	0.3%	0.3%	0.3%

Licensee Comments:

2Q/02: The above data does not include the potential unscheduled unavailability impact resulting from the identification of missing guard pipe access covers for a steam driven AFW line on 3/7/2002. TVA is still evaluating the EQ impact on system components from a theoretical break of the line. (Reference LER 390/2002-002 and Draft FAQ 30.7).

Safety System Unavailability, Residual Heat Removal System



Thresholds: White > 1.5% Yellow > 5.0% Red > 10.0%

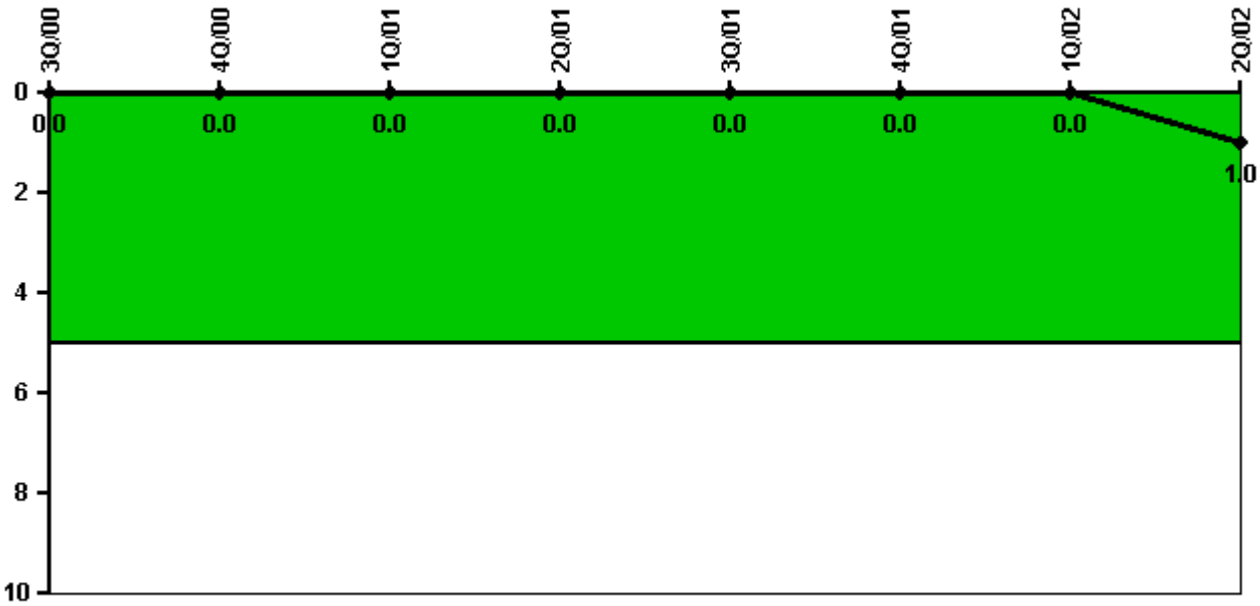
Notes

Safety System Unavailability, Residual Heat Removal System	3Q/00	4Q/00	1Q/01	2Q/01	3Q/01	4Q/01	1Q/02	2Q/02
Train 1								
Planned unavailable hours	1.60	2.45	2.30	2.35	2.30	27.82	2.19	2.02
Unplanned unavailable hours	0	0	0	0	0.30	0	0.03	0
Fault exposure hours	0	0	0	0	0	0	0	0
Effective Reset hours	0	0	0	0	0	0	0	0
Required hours	2144.10	2209.00	2160.00	2183.00	2208.00	2209.00	2091.40	2183.00
Train 2								
Planned unavailable hours	1.50	1.10	1.70	2.90	2.20	28.90	3.62	9.95
Unplanned unavailable hours	0	0	0	0	0	0	0.03	0
Fault exposure hours	0	0	0	0	0	0	0	0
Effective Reset hours	0	0	0	0	0	0	0	0
Required hours	2144.10	2209.00	2160.00	2183.00	2208.00	2209.00	2091.40	2183.00
Indicator value	0.6%	0.6%	0.5%	0.5%	0.4%	0.5%	0.4%	0.4%

Licensee Comments:

2Q/02: The above data does not include the potential unscheduled unavailability impact resulting from the identification of missing guard pipe access covers for a steam driven AFW line on 3/7/2002. TVA is still evaluating the EQ impact on system components from a theoretical break of the line. (Reference LER 390/2002-002 and Draft FAQ 30.7).

Safety System Functional Failures (PWR)



Thresholds: White > 5.0

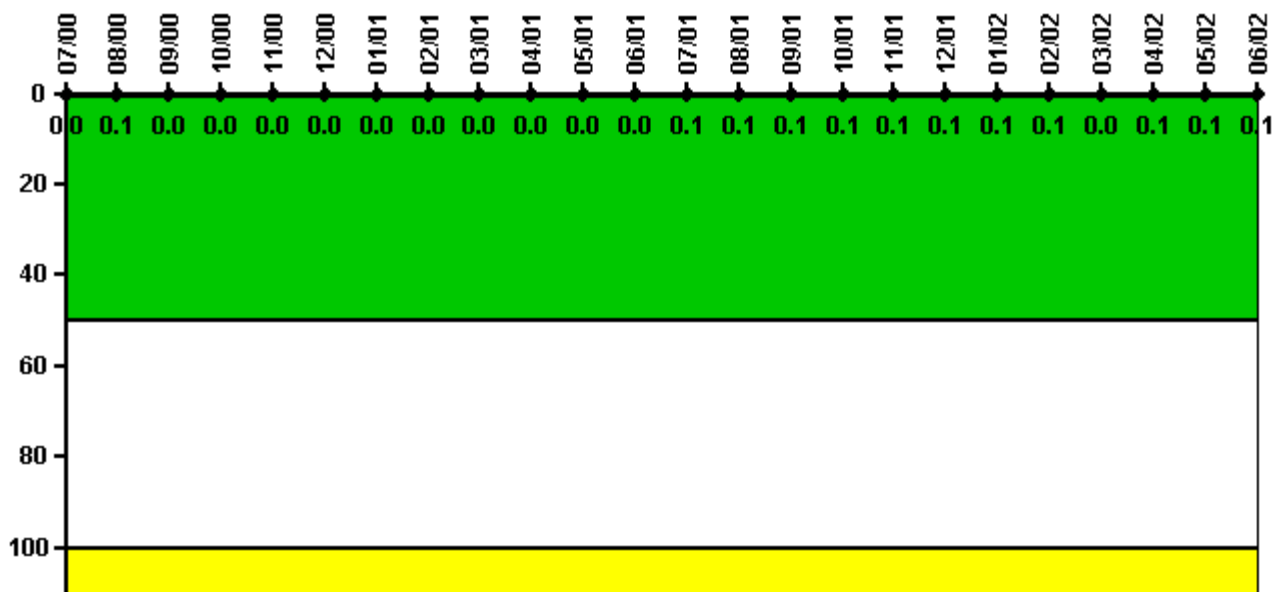
Notes

Safety System Functional Failures (PWR)	3Q/00	4Q/00	1Q/01	2Q/01	3Q/01	4Q/01	1Q/02	2Q/02
Safety System Functional Failures	0	0	0	0	0	0	0	1
Indicator value	0	0	0	0	0	0	0	1

Licensee Comments:

2Q/02: The above data includes a potential SSFF resulting from the identification of missing guard pipe access covers for a steam driven AFW line on 3/7/2002. TVA is still evaluating the EQ impact on system components from a theoretical break of the line which may result in a revision to this indicator. (Reference LER 390/2002-002).

Reactor Coolant System Activity



Thresholds: White > 50.0 Yellow > 100.0

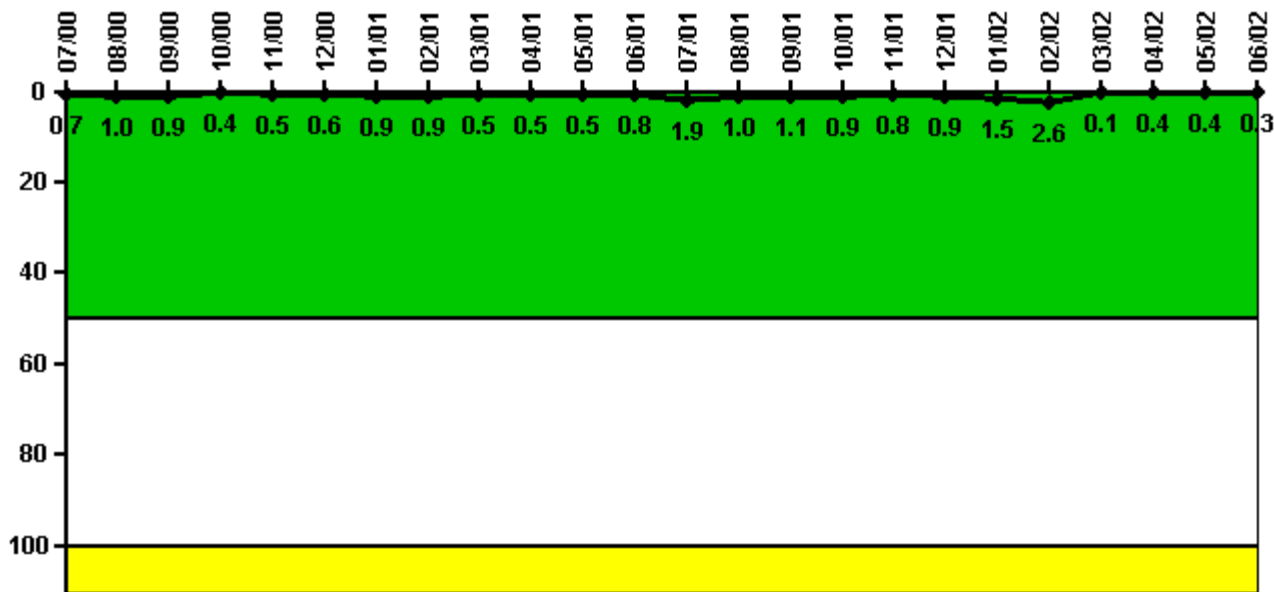
Notes

Reactor Coolant System Activity	7/00	8/00	9/00	10/00	11/00	12/00	1/01	2/01	3/01	4/01	5/01	6/01
Maximum activity	0.000490	0.000564	0.000270	0.000204	0.000231	0.000230	0.000233	0.000242	0.000248	0.000250	0.000250	0.000274
Technical specification limit	1.0	1.0	1.0	1.0	1.0	1.0	1.0	1.0	1.0	1.0	1.0	1.0
Indicator value	0	0.1	0	0	0	0	0	0	0	0	0	0

Reactor Coolant System Activity	7/01	8/01	9/01	10/01	11/01	12/01	1/02	2/02	3/02	4/02	5/02	6/02
Maximum activity	0.000267	0.000282	0.000281	0.000297	0.000301	0.000291	0.000310	0.000367	0.000081	0.000150	0.000134	0.000135
Technical specification limit	0.3	0.3	0.3	0.3	0.3	0.3	0.3	0.3	0.3	0.3	0.3	0.3
Indicator value	0.1	0.1	0.1	0.1	0.1	0.1	0.1	0.1	0	0.1	0.1	0.1

Licensee Comments: none

Reactor Coolant System Leakage



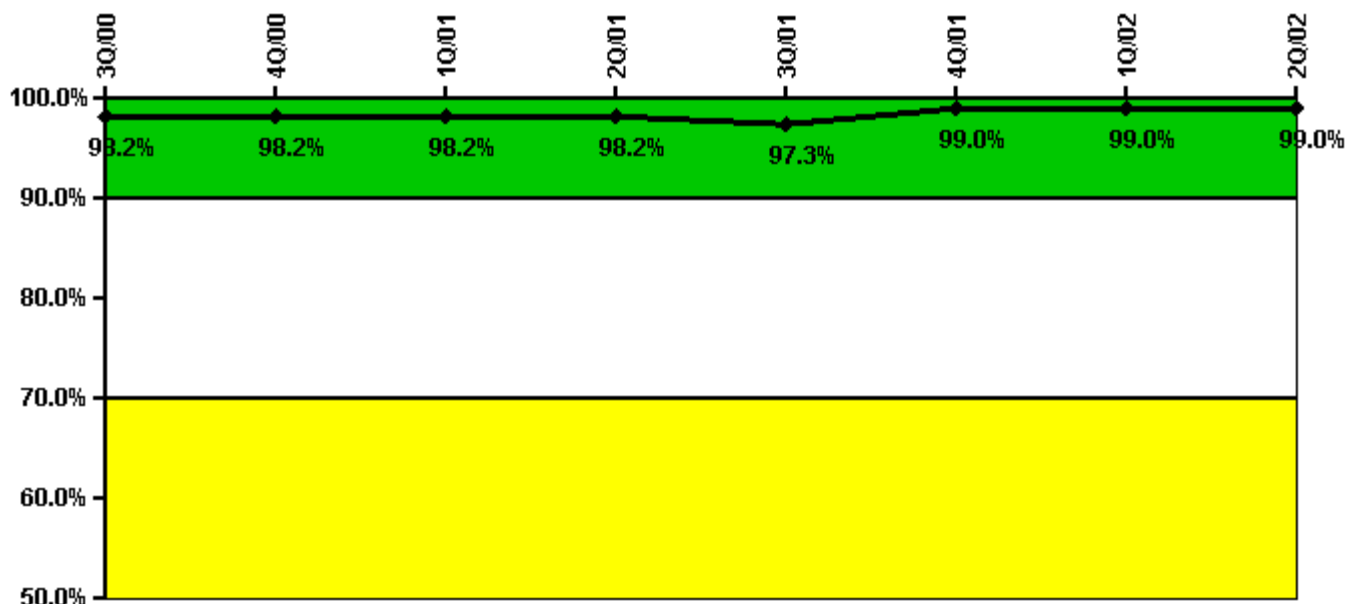
Thresholds: White > 50.0 Yellow > 100.0

Notes

Reactor Coolant System Leakage	7/00	8/00	9/00	10/00	11/00	12/00	1/01	2/01	3/01	4/01	5/01	6/01
Maximum leakage	0.070	0.100	0.090	0.040	0.050	0.060	0.090	0.090	0.050	0.050	0.050	0.080
Technical specification limit	10.0	10.0	10.0	10.0	10.0	10.0	10.0	10.0	10.0	10.0	10.0	10.0
Indicator value	0.7	1.0	0.9	0.4	0.5	0.6	0.9	0.9	0.5	0.5	0.5	0.8
Reactor Coolant System Leakage	7/01	8/01	9/01	10/01	11/01	12/01	1/02	2/02	3/02	4/02	5/02	6/02
Maximum leakage	0.190	0.100	0.110	0.090	0.080	0.090	0.150	0.260	0.010	0.040	0.040	0.030
Technical specification limit	10.0	10.0	10.0	10.0	10.0	10.0	10.0	10.0	10.0	10.0	10.0	10.0
Indicator value	1.9	1.0	1.1	0.9	0.8	0.9	1.5	2.6	0.1	0.4	0.4	0.3

Licensee Comments: none

Drill/Exercise Performance



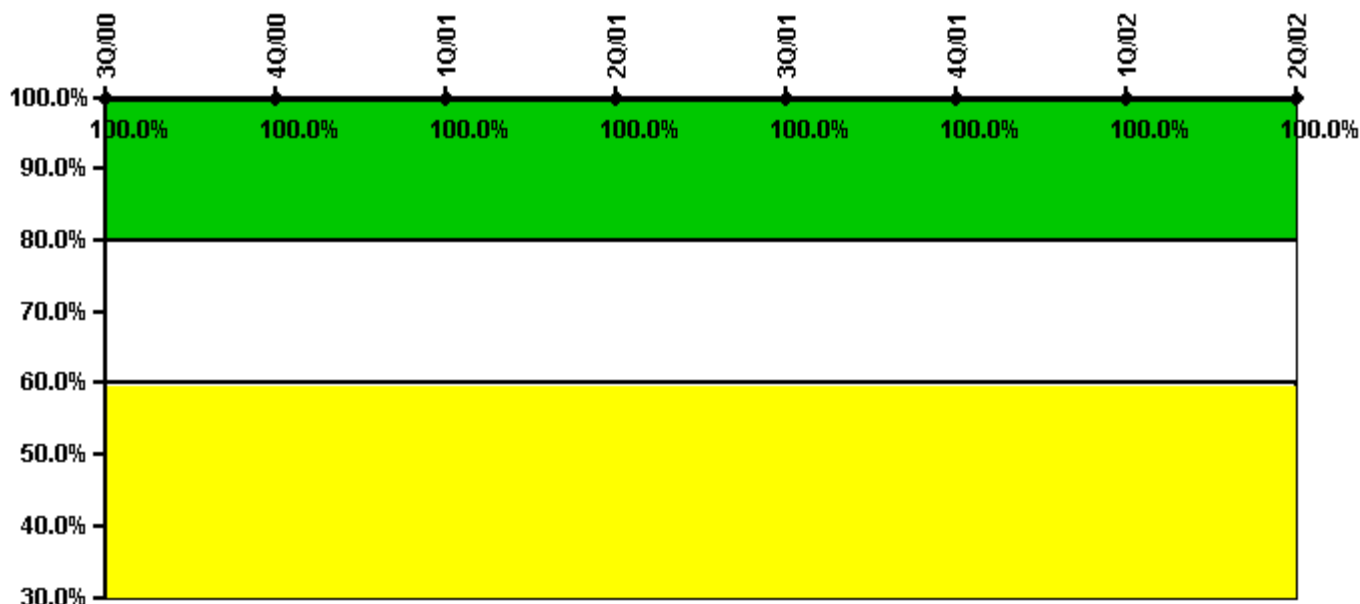
Thresholds: White < 90.0% Yellow < 70.0%

Notes

Drill/Exercise Performance	3Q/00	4Q/00	1Q/01	2Q/01	3Q/01	4Q/01	1Q/02	2Q/02
Successful opportunities	24.0	6.0	2.0	0	8.0	49.0	0	6.0
Total opportunities	24.0	6.0	2.0	0	8.0	50.0	0	6.0
Indicator value	98.2%	98.2%	98.2%	98.2%	97.3%	99.0%	99.0%	99.0%

Licensee Comments: none

ERO Drill Participation



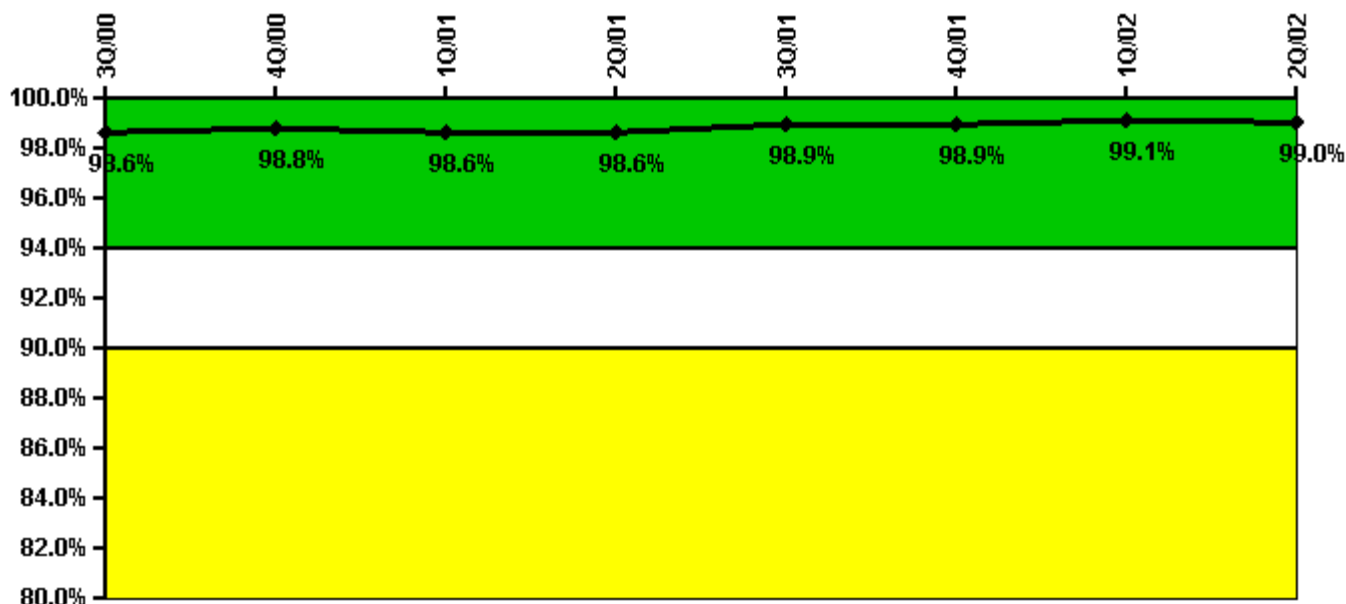
Thresholds: White < 80.0% Yellow < 60.0%

Notes

ERO Drill Participation	3Q/00	4Q/00	1Q/01	2Q/01	3Q/01	4Q/01	1Q/02	2Q/02
Participating Key personnel	48.0	46.0	49.0	48.0	47.0	50.0	50.0	54.0
Total Key personnel	48.0	46.0	49.0	48.0	47.0	50.0	50.0	54.0
Indicator value	100.0%	100.0%	100.0%	100.0%	100.0%	100.0%	100.0%	100.0%

Licensee Comments: none

Alert & Notification System



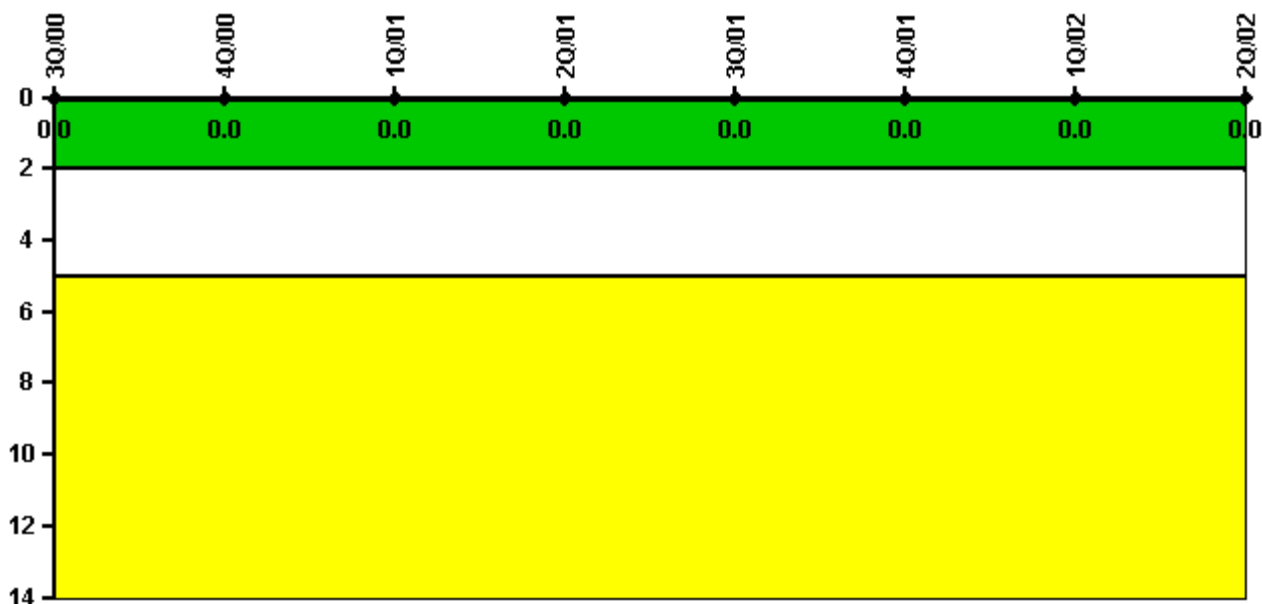
Thresholds: White < 94.0% Yellow < 90.0%

Notes

Alert & Notification System	3Q/00	4Q/00	1Q/01	2Q/01	3Q/01	4Q/01	1Q/02	2Q/02
Successful siren-tests	779	784	681	782	886	882	688	777
Total sirens-tests	792	792	693	792	891	891	693	792
Indicator value	98.6%	98.8%	98.6%	98.6%	98.9%	98.9%	99.1%	99.0%

Licensee Comments: none

Occupational Exposure Control Effectiveness



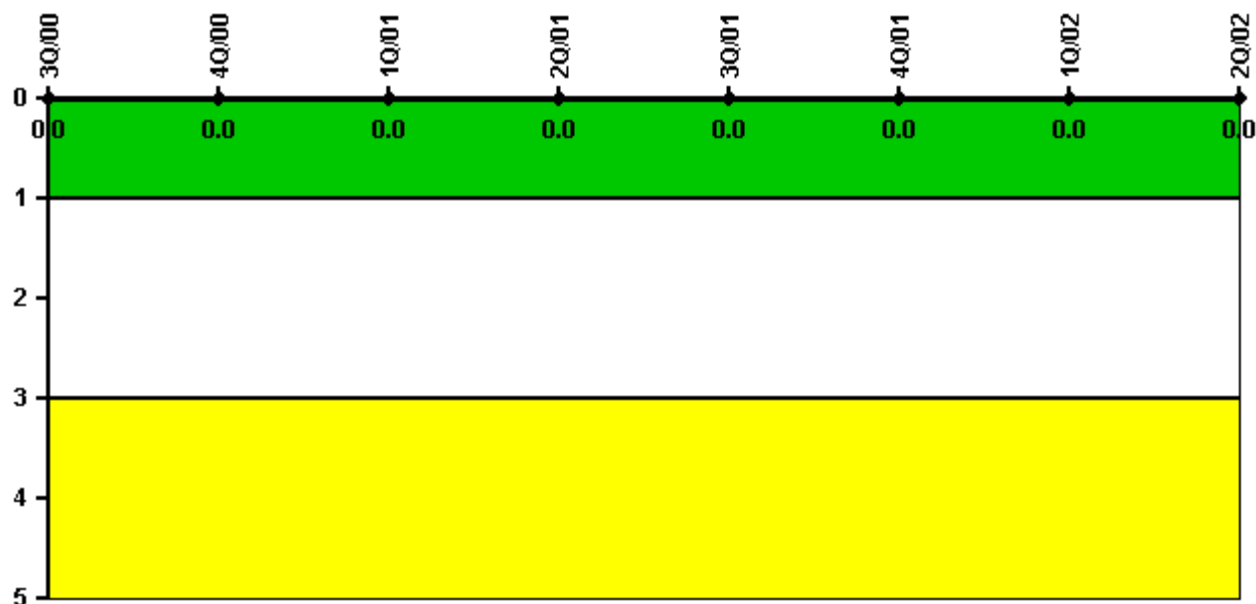
Thresholds: White > 2.0 Yellow > 5.0

Notes

Occupational Exposure Control Effectiveness	3Q/00	4Q/00	1Q/01	2Q/01	3Q/01	4Q/01	1Q/02	2Q/02
High radiation area occurrences	0	0	0	0	0	0	0	0
Very high radiation area occurrences	0	0	0	0	0	0	0	0
Unintended exposure occurrences	0	0	0	0	0	0	0	0
Indicator value	0	0	0	0	0	0	0	0

Licensee Comments: none

RETS/ODCM Radiological Effluent



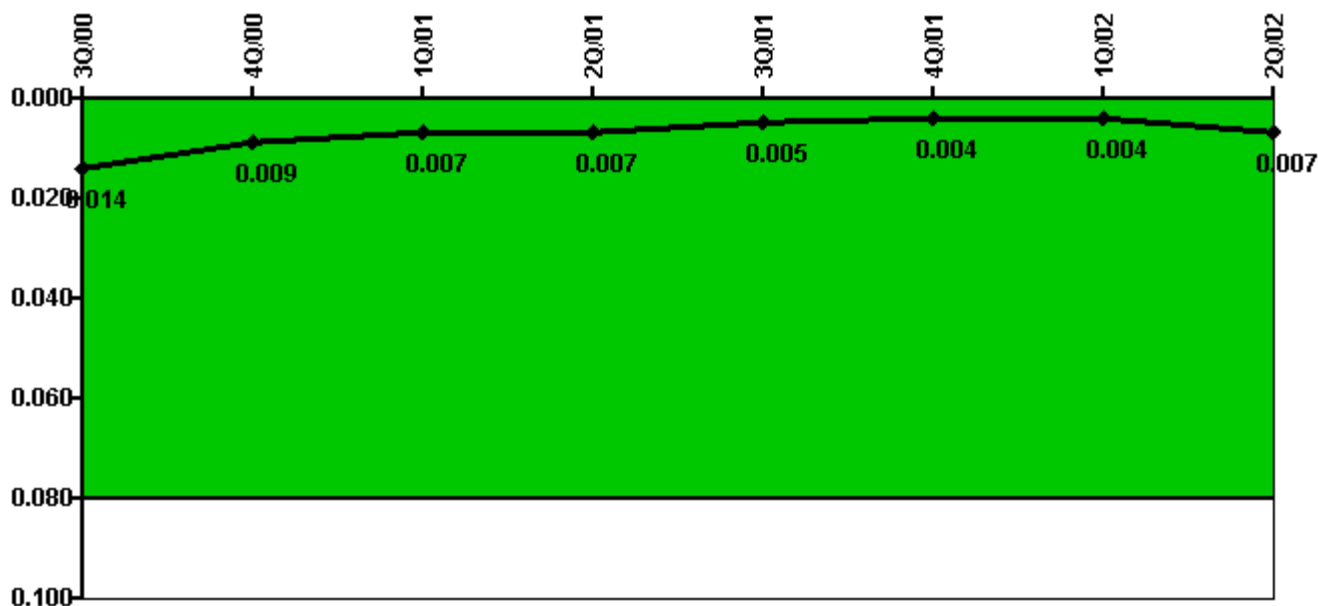
Thresholds: White > 1.0 Yellow > 3.0

Notes

RETS/ODCM Radiological Effluent	3Q/00	4Q/00	1Q/01	2Q/01	3Q/01	4Q/01	1Q/02	2Q/02
RETS/ODCM occurrences	0	0	0	0	0	0	0	0
Indicator value	0	0	0	0	0	0	0	0

Licensee Comments: none

Protected Area Security Performance Index



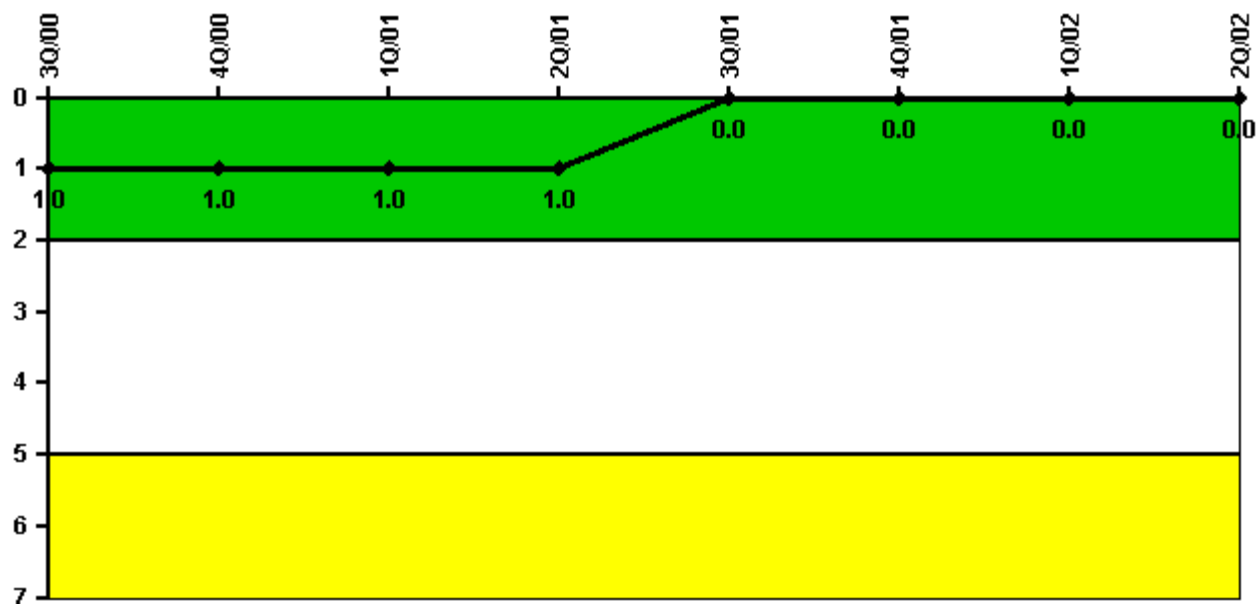
Thresholds: White > 0.080

Notes

Protected Area Security Performance Index	3Q/00	4Q/00	1Q/01	2Q/01	3Q/01	4Q/01	1Q/02	2Q/02
IDS compensatory hours	77.80	49.50	30.60	81.30	17.70	22.90	9.20	44.40
CCTV compensatory hours	24.9	13.4	4.3	2.6	1.6	6.2	23.8	151.7
IDS normalization factor	2.40	2.40	2.40	2.40	2.40	2.40	2.40	2.40
CCTV normalization factor	2.1	2.1	2.1	2.1	2.1	2.1	2.1	2.1
Index Value	0.014	0.009	0.007	0.007	0.005	0.004	0.004	0.007

Licensee Comments: none

Personnel Screening Program



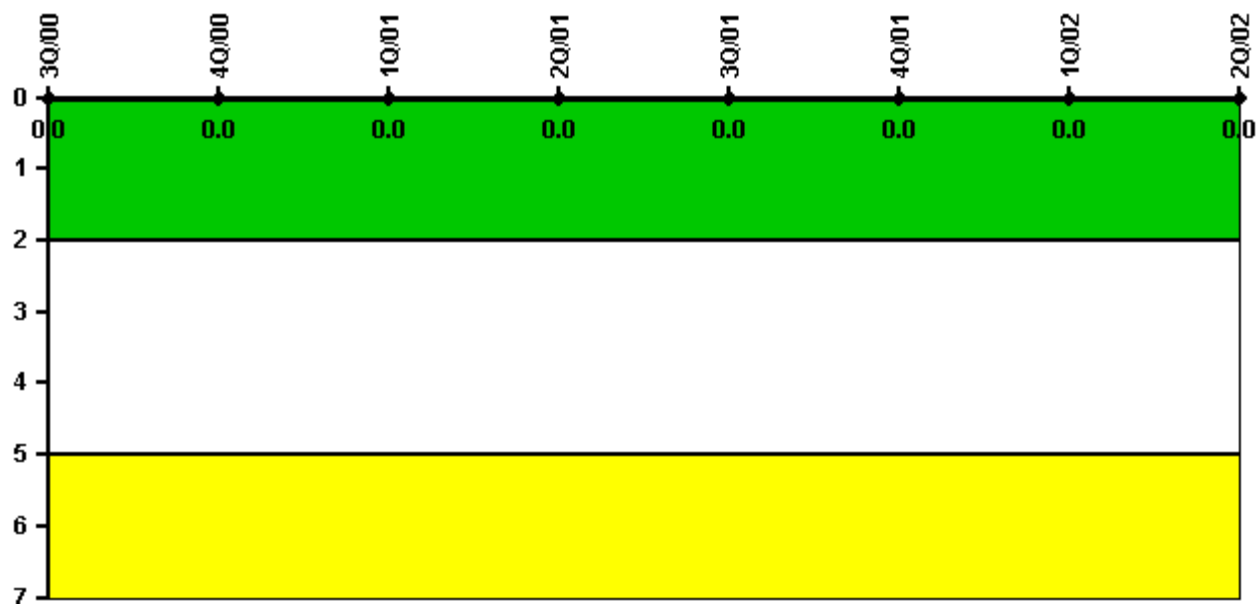
Thresholds: White > 2.0 Yellow > 5.0

Notes

Personnel Screening Program	3Q/00	4Q/00	1Q/01	2Q/01	3Q/01	4Q/01	1Q/02	2Q/02
Program failures	1	0	0	0	0	0	0	0
Indicator value	1	1	1	1	0	0	0	0

Licensee Comments: none

FFD/Personnel Reliability



Thresholds: White > 2.0 Yellow > 5.0

Notes

FFD/Personnel Reliability	3Q/00	4Q/00	1Q/01	2Q/01	3Q/01	4Q/01	1Q/02	2Q/02
Program Failures	0	0	0	0	0	0	0	0
Indicator value	0	0	0	0	0	0	0	0

Licensee Comments: none

▲ [PI Summary](#) | [Inspection Findings Summary](#) | [Reactor Oversight Process](#)

Last Modified: July 31, 2002