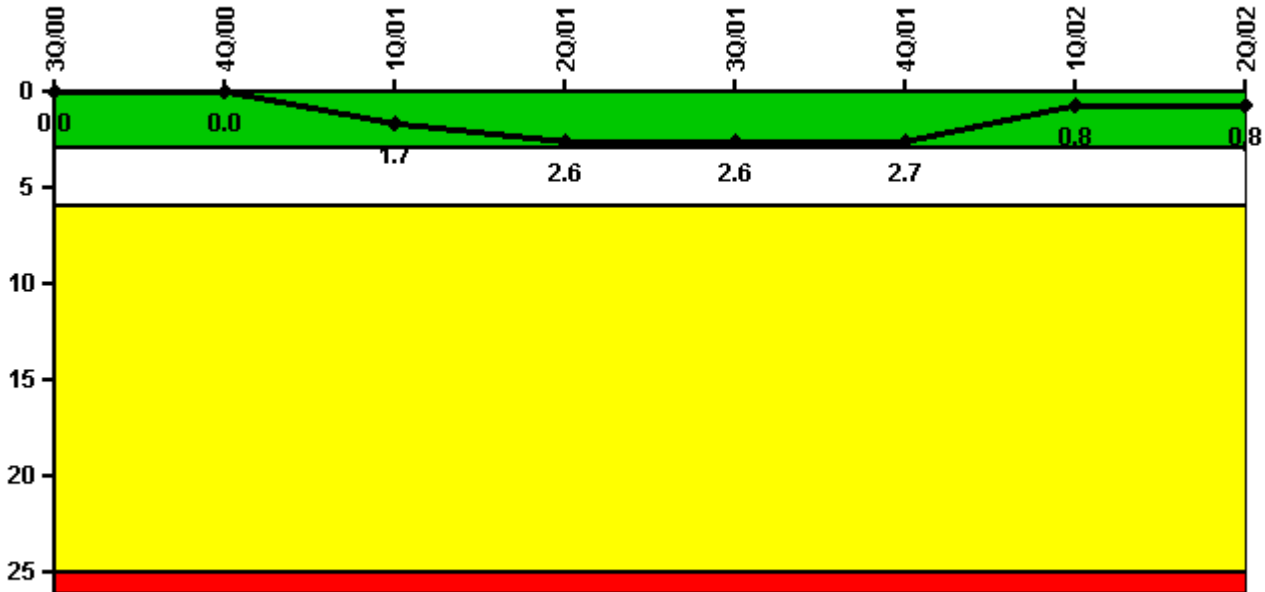


## South Texas 2

### 2Q/2002 Performance Indicators

Licensee's General Comments: none

#### Unplanned Scrams per 7000 Critical Hrs



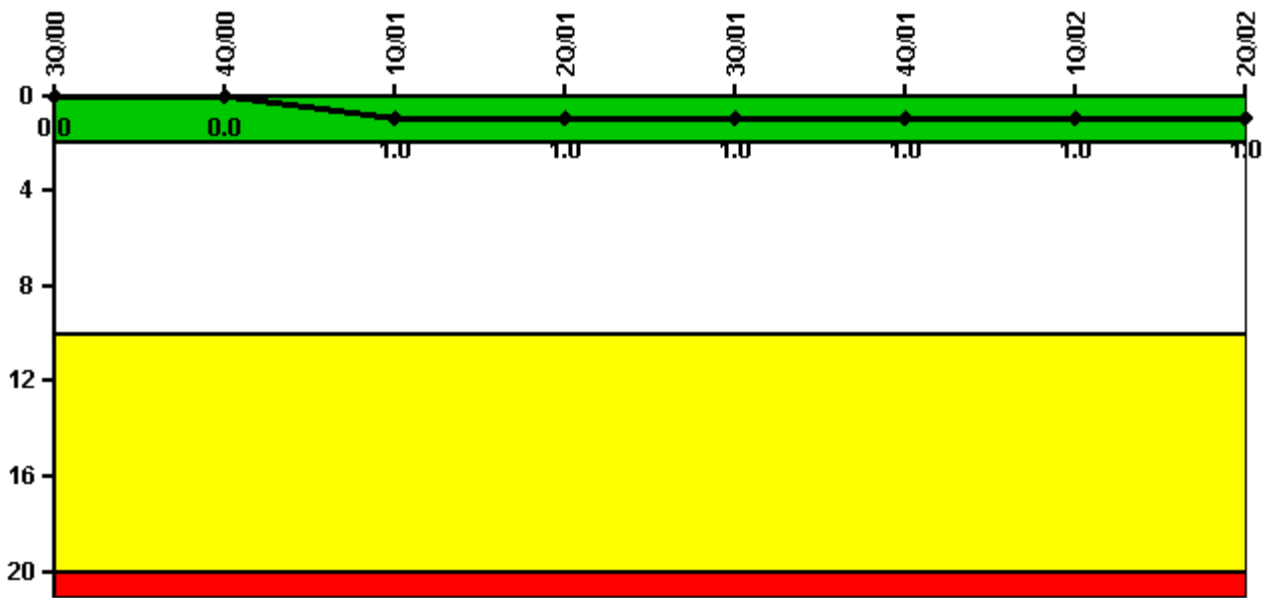
**Thresholds: White > 3.0 Yellow > 6.0 Red > 25.0**

#### Notes

Unplanned Scrams per 7000 Critical Hrs	3Q/00	4Q/00	1Q/01	2Q/01	3Q/01	4Q/01	1Q/02	2Q/02
Unplanned scrams	0	0	2.0	1.0	0	0	0	1.0
Critical hours	2208.0	2209.0	1499.2	2100.9	2208.0	2072.6	2160.0	2114.9
Indicator value	0	0	1.7	2.6	2.6	2.7	0.8	0.8

Licensee Comments: none

### Scrams with Loss of Normal Heat Removal



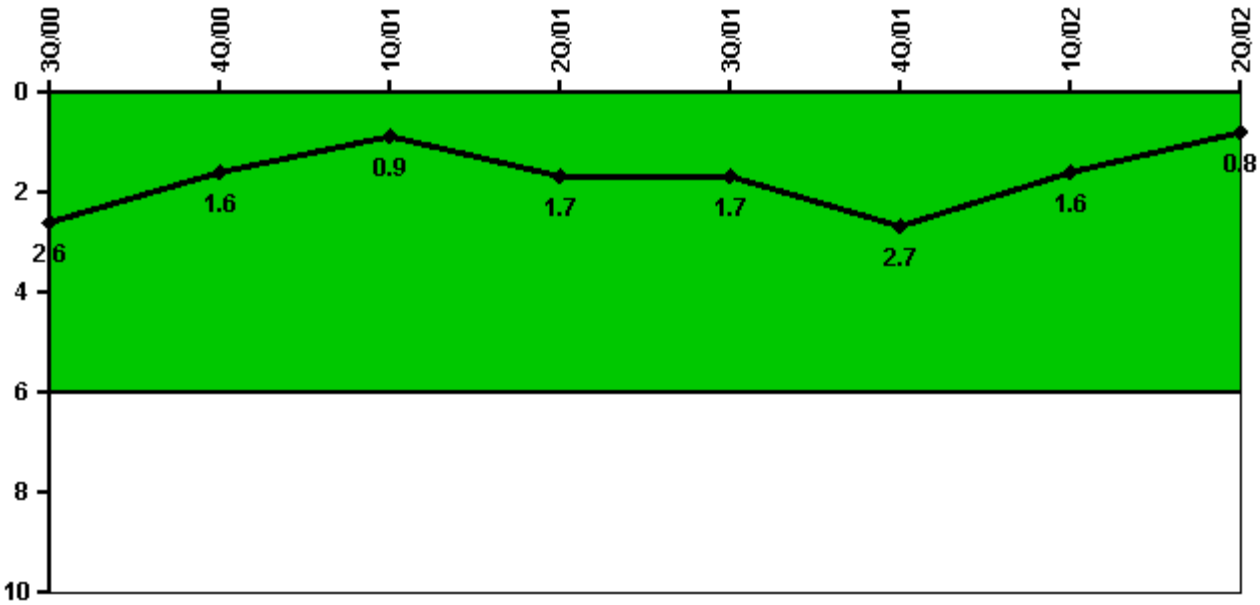
Thresholds: White > 2.0 Yellow > 10.0 Red > 20.0

#### Notes

Scrams with Loss of Normal Heat Removal	3Q/00	4Q/00	1Q/01	2Q/01	3Q/01	4Q/01	1Q/02	2Q/02
Scrams	0	0	1.0	0	0	0	0	0
Indicator value	0	0	1.0	1.0	1.0	1.0	1.0	1.0

Licensee Comments: none

### Unplanned Power Changes per 7000 Critical Hrs



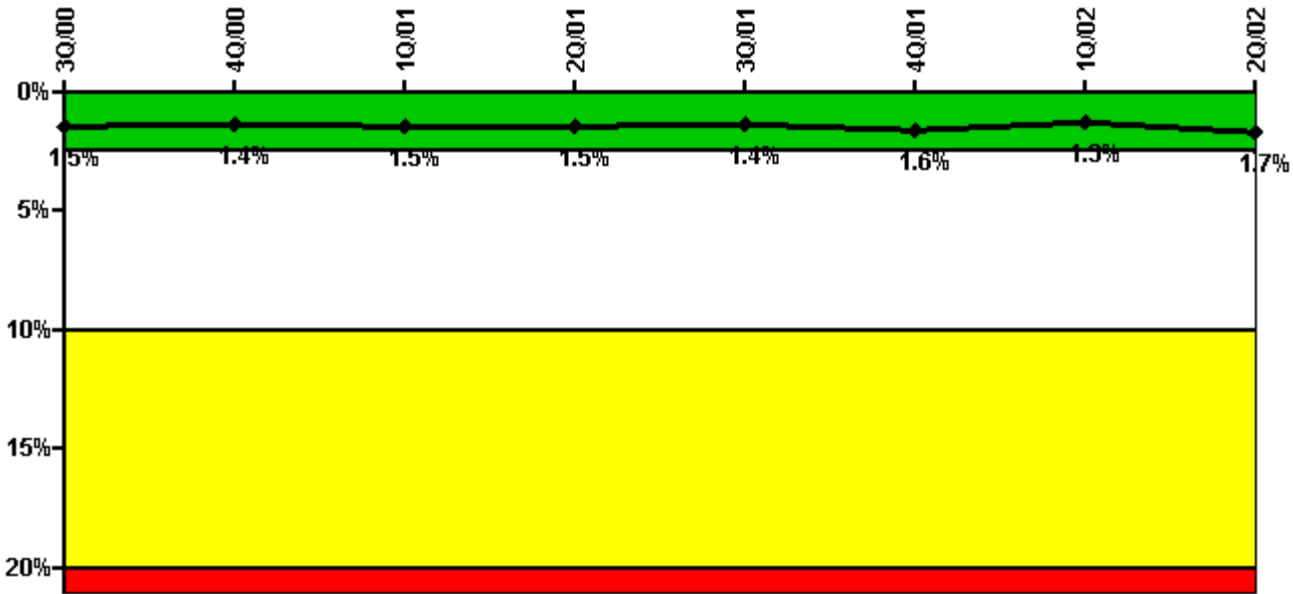
Thresholds: White > 6.0

#### Notes

Unplanned Power Changes per 7000 Critical Hrs	3Q/00	4Q/00	1Q/01	2Q/01	3Q/01	4Q/01	1Q/02	2Q/02
Unplanned power changes	0	0	1.0	1.0	0	1.0	0	0
Critical hours	2208.0	2209.0	1499.2	2100.9	2208.0	2072.6	2160.0	2114.9
Indicator value	2.6	1.6	0.9	1.7	1.7	2.7	1.6	0.8

Licensee Comments: none

### Safety System Unavailability, Emergency AC Power, >2EDG



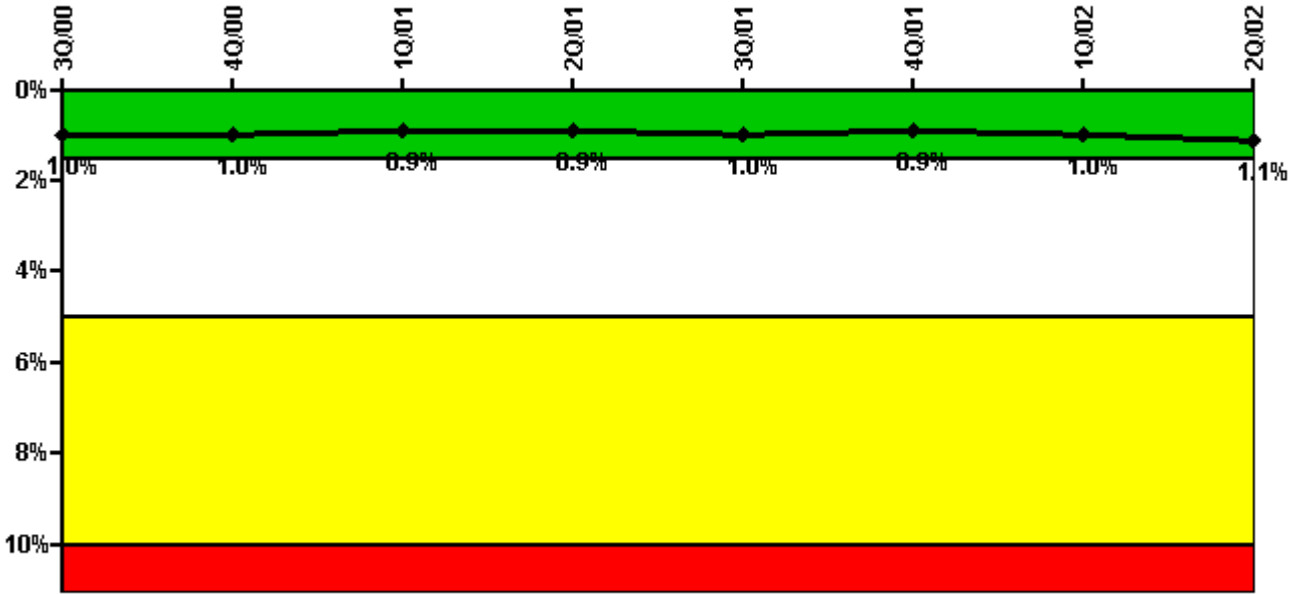
Thresholds: White > 2.5% Yellow > 10.0% Red > 20.0%

**Notes**

Safety System Unavailability, Emergency AC Power, >2EDG	3Q/00	4Q/00	1Q/01	2Q/01	3Q/01	4Q/01	1Q/02	2Q/02
<b>Train 1</b>								
Planned unavailable hours	15.00	133.30	11.50	16.00	8.30	53.20	18.47	44.00
Unplanned unavailable hours	5.30	0	0	0	0	0	0	26.43
Fault exposure hours	0	0	0	0	0	0	0	0
Effective Reset hours	0	0	0	0	0	0	0	0
Required hours	2208.00	2209.00	2160.00	2183.00	2208.00	2209.00	2160.00	2184.00
<b>Train 2</b>								
Planned unavailable hours	19.92	16.57	22.02	23.20	4.20	141.80	39.10	20.55
Unplanned unavailable hours	0	0	0	0	0	0	0	0
Fault exposure hours	0	0	0	0	0	0	0	0
Effective Reset hours	0	0	0	0	0	0	0	0
Required hours	2208.00	2209.00	2160.00	2183.00	2208.00	2209.00	2160.00	2184.00
<b>Train 3</b>								
Planned unavailable hours	37.60	14.30	52.70	58.50	21.90	0	33.33	100.00
Unplanned unavailable hours	0	0	0	0	0	0	0	132.73
Fault exposure hours	0	0	0	0	0	0	0	0
Effective Reset hours	0	0	0	0	0	0	0	0
Required hours	2208.00	2209.00	2160.00	2183.00	2208.00	2209.00	2160.00	2184.00
<b>Indicator value</b>	1.5%	1.4%	1.5%	1.5%	1.4%	1.6%	1.3%	1.7%

Licensee Comments: none

### Safety System Unavailability, High Pressure Injection System (HPSI)



Thresholds: White > 1.5% Yellow > 5.0% Red > 10.0%

#### Notes

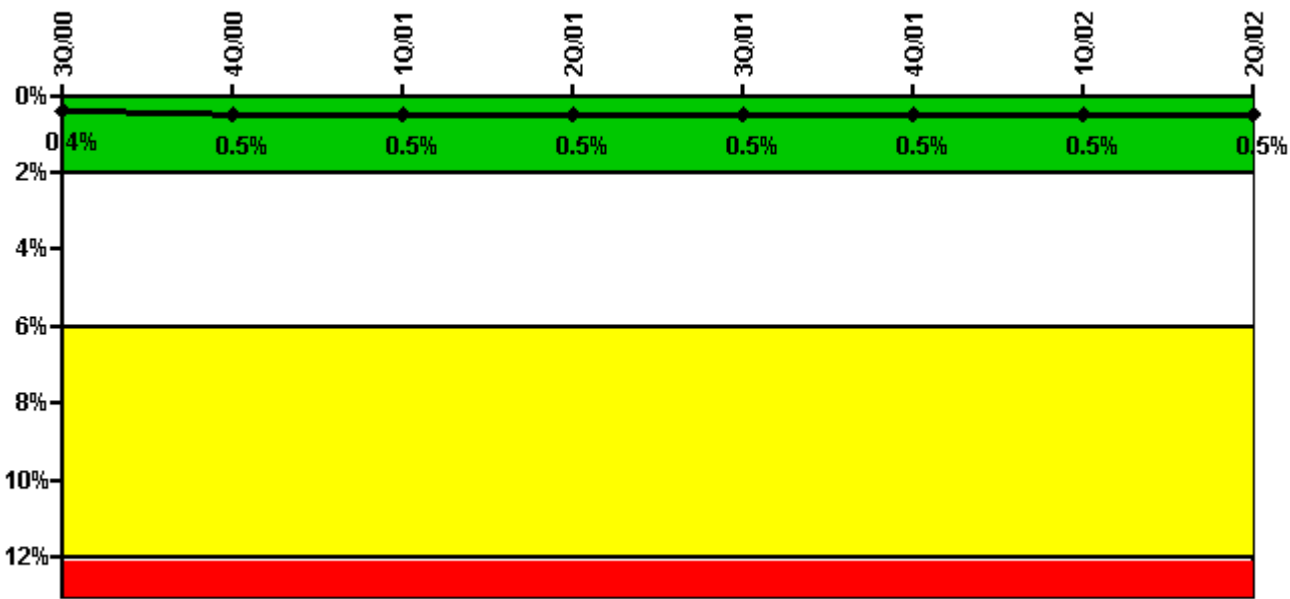
Safety System Unavailability, High Pressure Injection System (HPSI)	3Q/00	4Q/00	1Q/01	2Q/01	3Q/01	4Q/01	1Q/02	2Q/02
<b>Train 1</b>								
Planned unavailable hours	41.00	0	0.50	1.10	35.00	14.80	1.20	18.77
Unplanned unavailable hours	0	0	0	0	0	0	0	0
Fault exposure hours	0	0	0	0	0	0	0	0
Effective Reset hours	0	0	0	0	0	0	0	0
Required hours	2208.00	2209.00	1499.20	2100.90	2208.00	2072.60	2160.00	2184.00
<b>Train 2</b>								
Planned unavailable hours	12.00	54.60	12.33	48.00	17.70	0.50	11.50	14.50
Unplanned unavailable hours	0	0	0	0	0	0	0	0
Fault exposure hours	0	0	0	0	0	0	0	0
Effective Reset hours	0	0	0	0	0	0	0	0
Required hours	2208.00	2209.00	1499.20	2100.90	2208.00	2072.60	2160.00	2184.00
<b>Train 3</b>								
Planned unavailable hours	15.75	2.10	14.80	56.30	51.90	0	14.88	63.13
Unplanned unavailable hours	0	0	0	0	0	0	0	0
Fault exposure hours	0	0	0	0	0	0	0	0
Effective Reset hours	0	0	0	0	0	0	0	0
Required hours	2208.00	2209.00	1499.20	2100.90	2208.00	2072.60	2160.00	2184.00

Indicator value	1.0%	1.0%	0.9%	0.9%	1.0%	0.9%	1.0%	1.1%
-----------------	------	------	------	------	------	------	------	------

Licensee Comments:

2Q/02: 6/2002 - Actual hours were used instead of critical hours because no mode transitions were made to a mode where the systems were not required.

### Safety System Unavailability, Heat Removal System (AFW)



Thresholds: White > 2.0% Yellow > 6.0% Red > 12.0%

### Notes

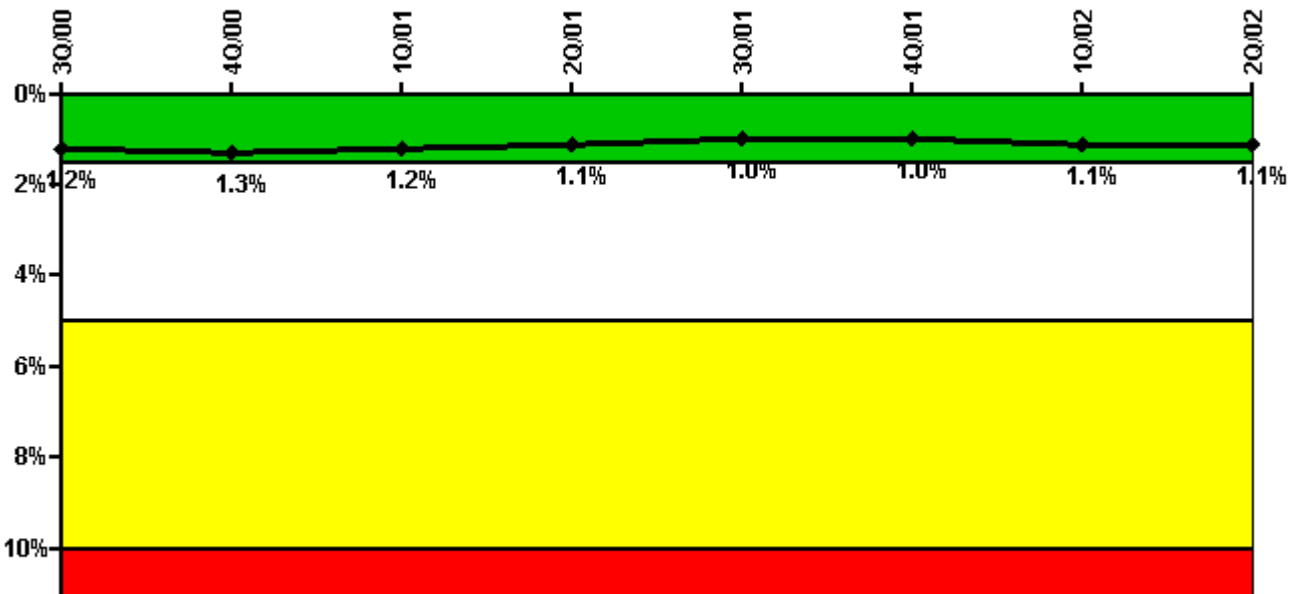
Safety System Unavailability, Heat Removal System (AFW)	3Q/00	4Q/00	1Q/01	2Q/01	3Q/01	4Q/01	1Q/02	2Q/02
<b>Train 1</b>								
Planned unavailable hours	0	10.30	22.02	10.40	6.50	7.60	12.57	0
Unplanned unavailable hours	0	0	0	0	0	0	0	0
Fault exposure hours	0	0	0	0	0	0	0	0
Effective Reset hours	0	0	0	0	0	0	0	0
Required hours	2208.00	2209.00	1499.20	2100.90	2208.00	2072.60	2160.00	2184.00
<b>Train 2</b>								
Planned unavailable hours	12.53	9.60	0	0	10.00	6.30	0	19.67
Unplanned unavailable hours	0	0	0	0	0	0	0	0
Fault exposure hours	0	0	0	0	0	0	0	0
Effective Reset hours	0	0	0	0	0	0	0	0
Required hours	2208.00	2209.00	1499.20	2100.90	2208.00	2072.60	2160.00	2184.00

<b>Train 3</b>								
Planned unavailable hours	7.80	8.70	5.27	10.40	14.50	17.90	6.38	0
Unplanned unavailable hours	0	0	0	0	0	0	0	0
Fault exposure hours	0	0	0	0	0	0	0	0
Effective Reset hours	0	0	0	0	0	0	0	0
Required hours	2208.00	2209.00	1499.20	2100.90	2208.00	2072.60	2160.00	2184.00
<b>Train 4</b>								
Planned unavailable hours	12.08	42.40	33.27	0	22.70	27.70	40.82	24.00
Unplanned unavailable hours	0	0	0	0	0	0	0	0
Fault exposure hours	0	0	0	0	0	0	0	0
Effective Reset hours	0	0	0	0	0	0	0	0
Required hours	2208.00	2209.00	1499.20	2100.90	2208.00	2072.60	2160.00	2184.00
<b>Indicator value</b>	<b>0.4%</b>	<b>0.5%</b>	<b>0.5%</b>	<b>0.5%</b>	<b>0.5%</b>	<b>0.5%</b>	<b>0.5%</b>	<b>0.5%</b>

Licensee Comments:

2Q/02: 6/2002 - Actual hours were used instead of critical hours because no mode transitions were made to a mode where the systems were not required.

### Safety System Unavailability, Residual Heat Removal System



Thresholds: White > 1.5% Yellow > 5.0% Red > 10.0%

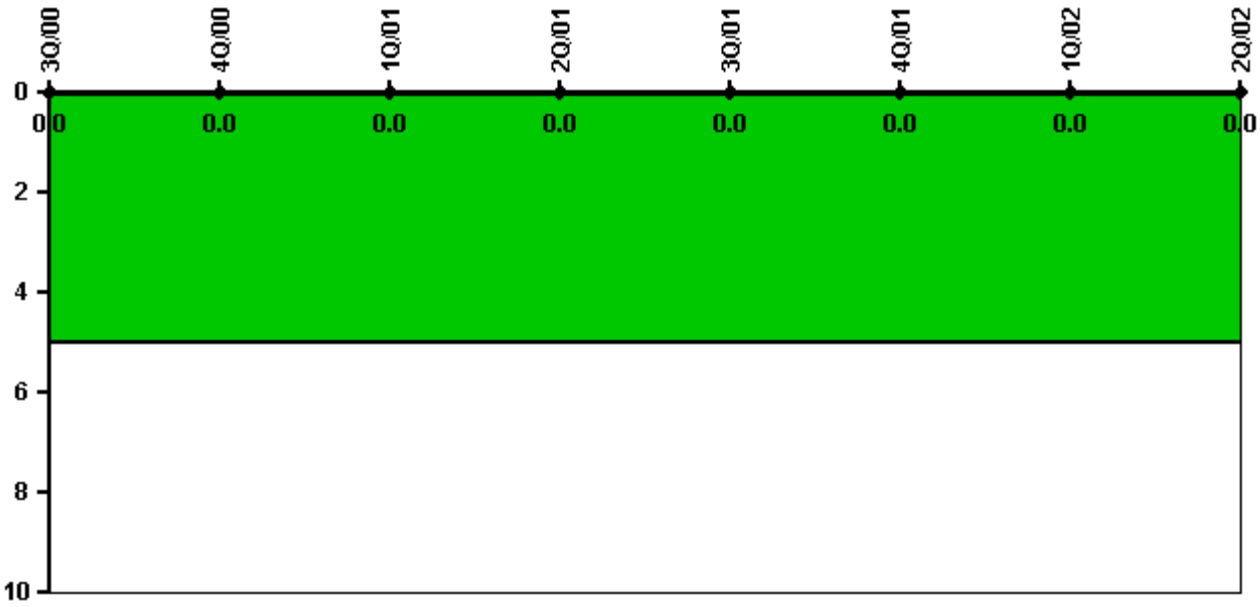
Notes

Safety System Unavailability, Residual Heat Removal System	3Q/00	4Q/00	1Q/01	2Q/01	3Q/01	4Q/01	1Q/02	2Q/02
<b>Train 1</b>								
Planned unavailable hours	34.67	41.58	0.50	0	35.00	0.80	1.20	43.17
Unplanned unavailable hours	0	0	0	0	0	0	0	0
Fault exposure hours	0	0	0	0	0	0	0	0
Effective Reset hours	0	0	0	0	0	0	0	0
Required hours	2208.00	2209.00	2124.30	2183.00	2208.00	2209.00	2160.00	2184.00
<b>Train 2</b>								
Planned unavailable hours	0	54.50	21.67	0	0.40	0.50	25.00	49.62
Unplanned unavailable hours	0	0	0	0	0	0	0	0
Fault exposure hours	0	0	0	0	0	0	0	0
Effective Reset hours	0	0	0	0	0	0	0	0
Required hours	2208.00	2209.00	2124.30	2183.00	2208.00	2209.00	2160.00	2184.00
<b>Train 3</b>								
Planned unavailable hours	0	18.50	13.50	0	4.50	0	21.30	63.13
Unplanned unavailable hours	0	0	0	0	0	0	0	0
Fault exposure hours	0	0	0	0	0	0	0	0
Effective Reset hours	0	0	0	0	0	0	0	0
Required hours	2208.00	2209.00	2124.30	2183.00	2208.00	2072.60	2160.00	2184.00
<b>Indicator value</b>	<b>1.2%</b>	<b>1.3%</b>	<b>1.2%</b>	<b>1.1%</b>	<b>1.0%</b>	<b>1.0%</b>	<b>1.1%</b>	<b>1.1%</b>

Licensee Comments: none



### Safety System Functional Failures (PWR)



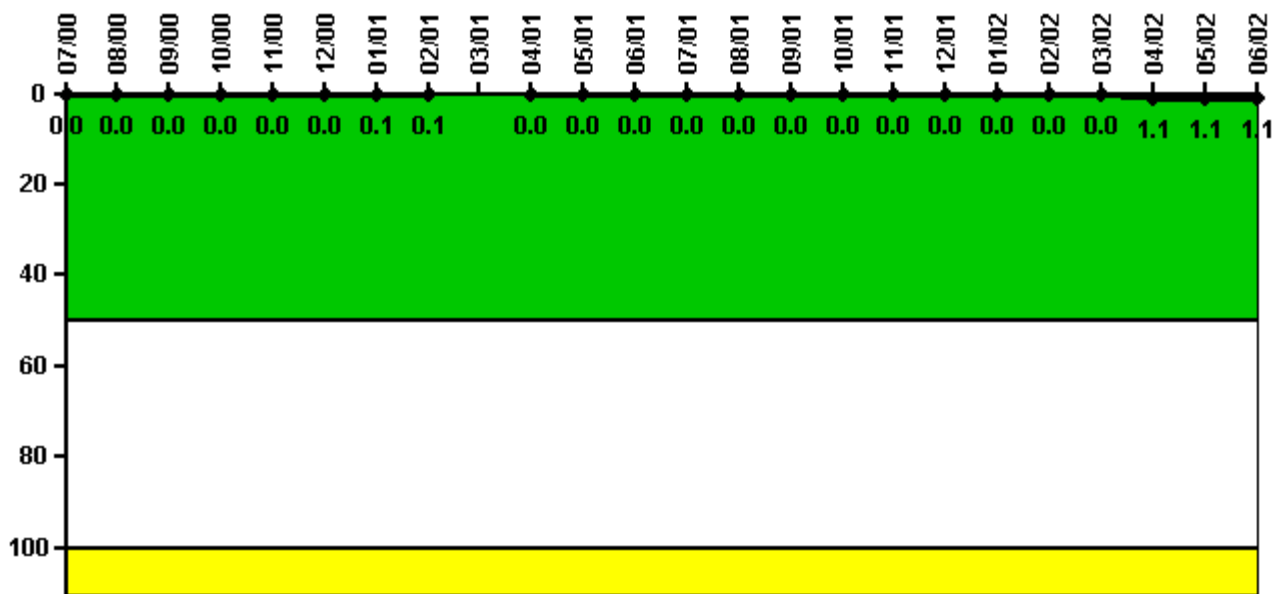
Thresholds: White > 5.0

#### Notes

Safety System Functional Failures (PWR)	3Q/00	4Q/00	1Q/01	2Q/01	3Q/01	4Q/01	1Q/02	2Q/02
Safety System Functional Failures	0	0	0	0	0	0	0	0
Indicator value	0	0	0	0	0	0	0	0

Licensee Comments: none

### Reactor Coolant System Activity



Thresholds: White > 50.0 Yellow > 100.0

**Notes**

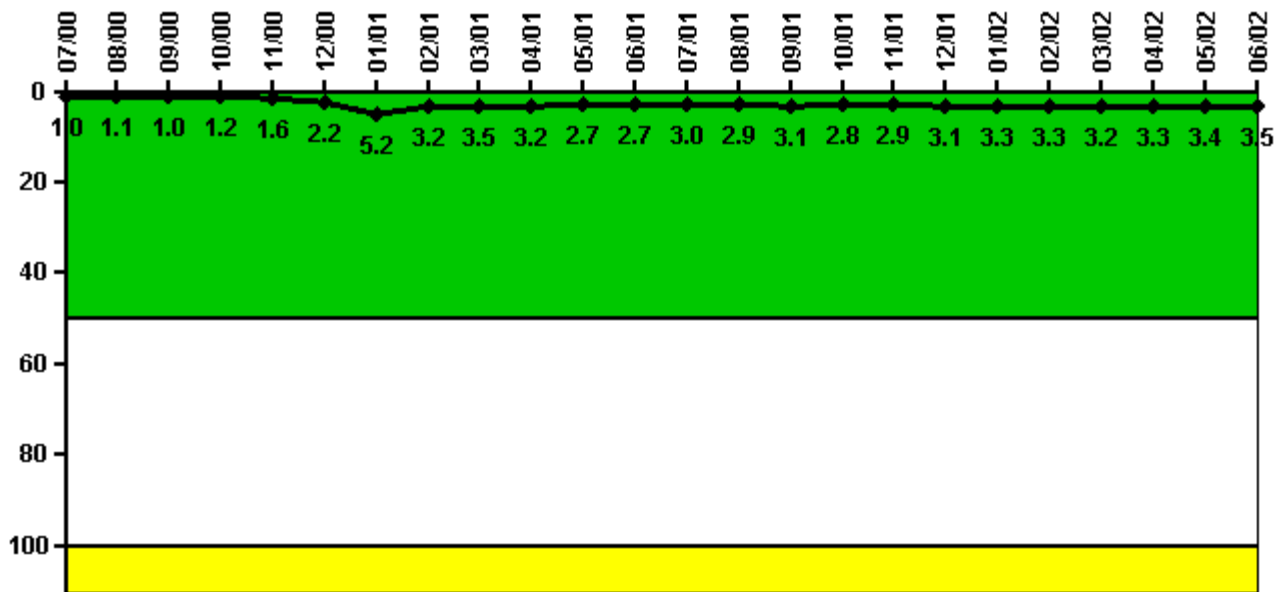
Reactor Coolant System Activity	7/00	8/00	9/00	10/00	11/00	12/00	1/01	2/01	3/01	4/01	5/01	6/01
Maximum activity	0.000405	0.000425	0.000458	0.000485	0.000435	0.000466	0.000648	0.000639	N/A	0.000067	0.000078	0.000081
Technical specification limit	1.0	1.0	1.0	1.0	1.0	1.0	1.0	1.0	1.0	1.0	1.0	1.0
Indicator value	0	0	0	0	0	0	0.1	0.1	N/A	0	0	0

Reactor Coolant System Activity	7/01	8/01	9/01	10/01	11/01	12/01	1/02	2/02	3/02	4/02	5/02	6/02
Maximum activity	0.000095	0.000089	0.000097	0.000095	0.000094	0.000101	0.000106	0.000119	0.000109	0.011200	0.011200	0.010800
Technical specification limit	1.0	1.0	1.0	1.0	1.0	1.0	1.0	1.0	1.0	1.0	1.0	1.0
Indicator value	0	0	0	0	0	0	0	0	0	1.1	1.1	1.1

Licensee Comments: none

### Reactor Coolant System Leakage



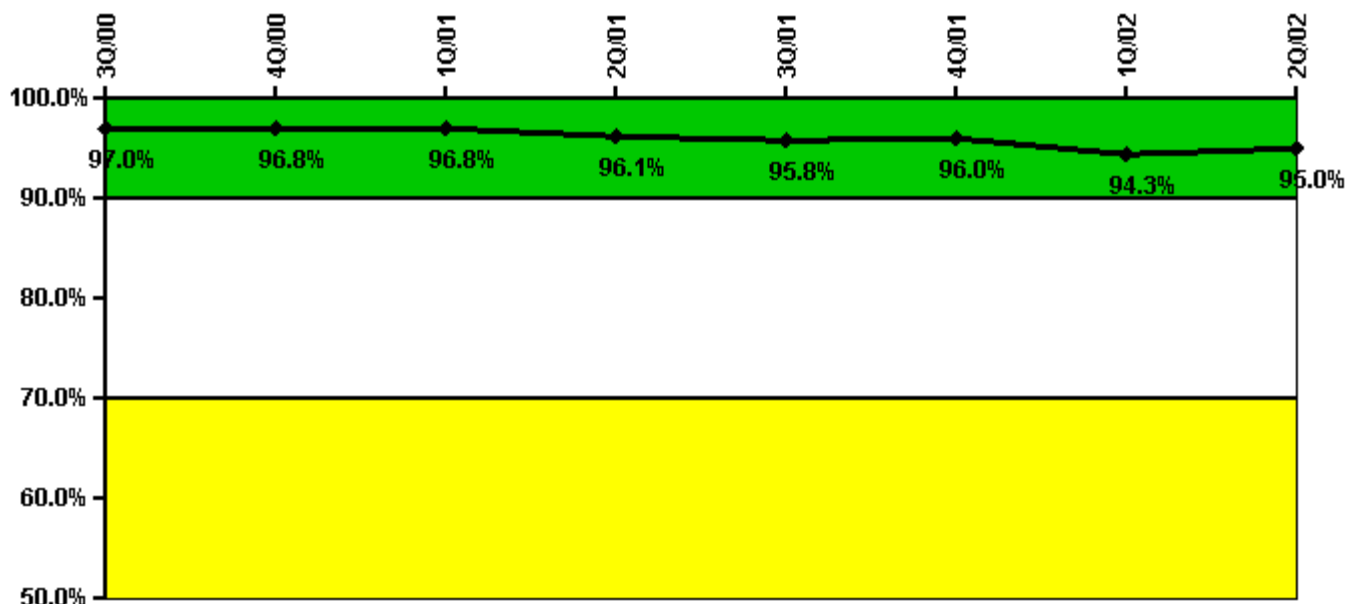
Thresholds: White > 50.0 Yellow > 100.0

**Notes**

Reactor Coolant System Leakage	7/00	8/00	9/00	10/00	11/00	12/00	1/01	2/01	3/01	4/01	5/01	6/01
Maximum leakage	0.098	0.107	0.103	0.115	0.160	0.220	0.524	0.320	0.345	0.318	0.273	0.270
Technical specification limit	10.0	10.0	10.0	10.0	10.0	10.0	10.0	10.0	10.0	10.0	10.0	10.0
Indicator value	1.0	1.1	1.0	1.2	1.6	2.2	5.2	3.2	3.5	3.2	2.7	2.7
Reactor Coolant System Leakage	7/01	8/01	9/01	10/01	11/01	12/01	1/02	2/02	3/02	4/02	5/02	6/02
Maximum leakage	0.295	0.289	0.310	0.283	0.294	0.309	0.329	0.331	0.317	0.325	0.344	0.351
Technical specification limit	10.0	10.0	10.0	10.0	10.0	10.0	10.0	10.0	10.0	10.0	10.0	10.0
Indicator value	3.0	2.9	3.1	2.8	2.9	3.1	3.3	3.3	3.2	3.3	3.4	3.5

Licensee Comments: none

### Drill/Exercise Performance



Thresholds: White < 90.0% Yellow < 70.0%

#### Notes

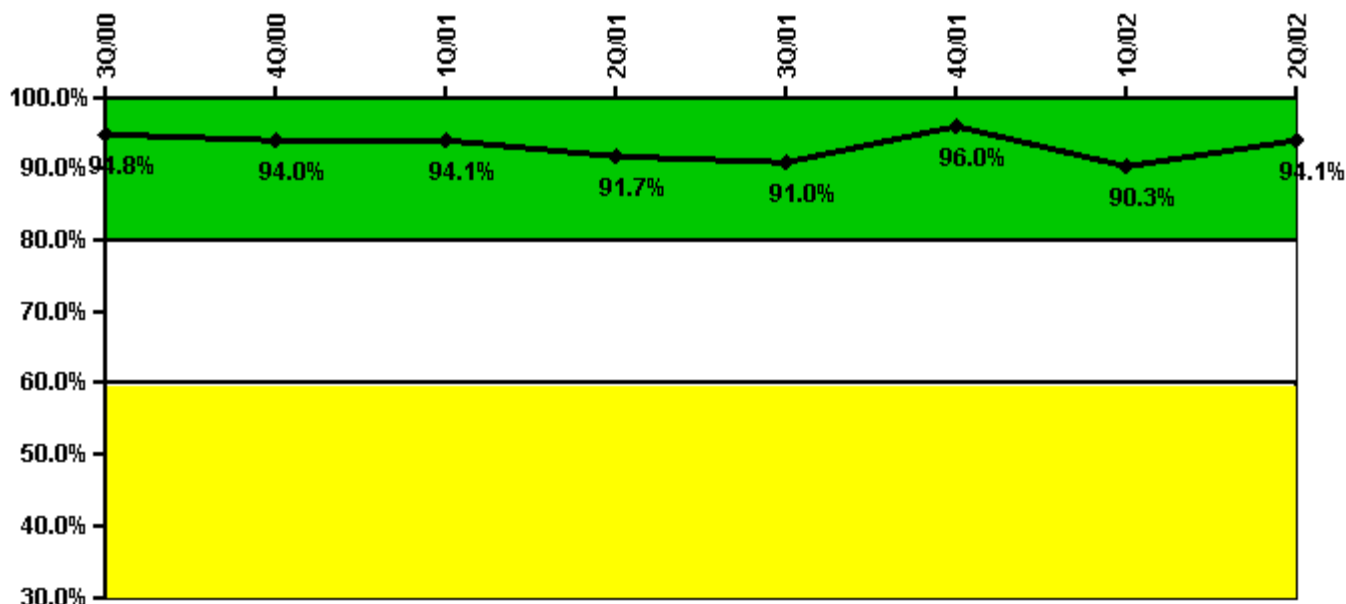
Drill/Exercise Performance	3Q/00	4Q/00	1Q/01	2Q/01	3Q/01	4Q/01	1Q/02	2Q/02
Successful opportunities	25.0	9.0	0	94.0	19.0	78.0	33.0	28.0
Total opportunities	26.0	10.0	0	100.0	20.0	80.0	37.0	28.0
Indicator value	97.0%	96.8%	96.8%	96.1%	95.8%	96.0%	94.3%	95.0%

Licensee Comments:

2Q/02: Corrected historical data for 11/2001 - Data numbers 28 and 30 were reversed for Drill/Exercise Performance.

4Q/01: 11/2001 - Data numbers 28 and 30 were reversed. Corrected same.

### ERO Drill Participation



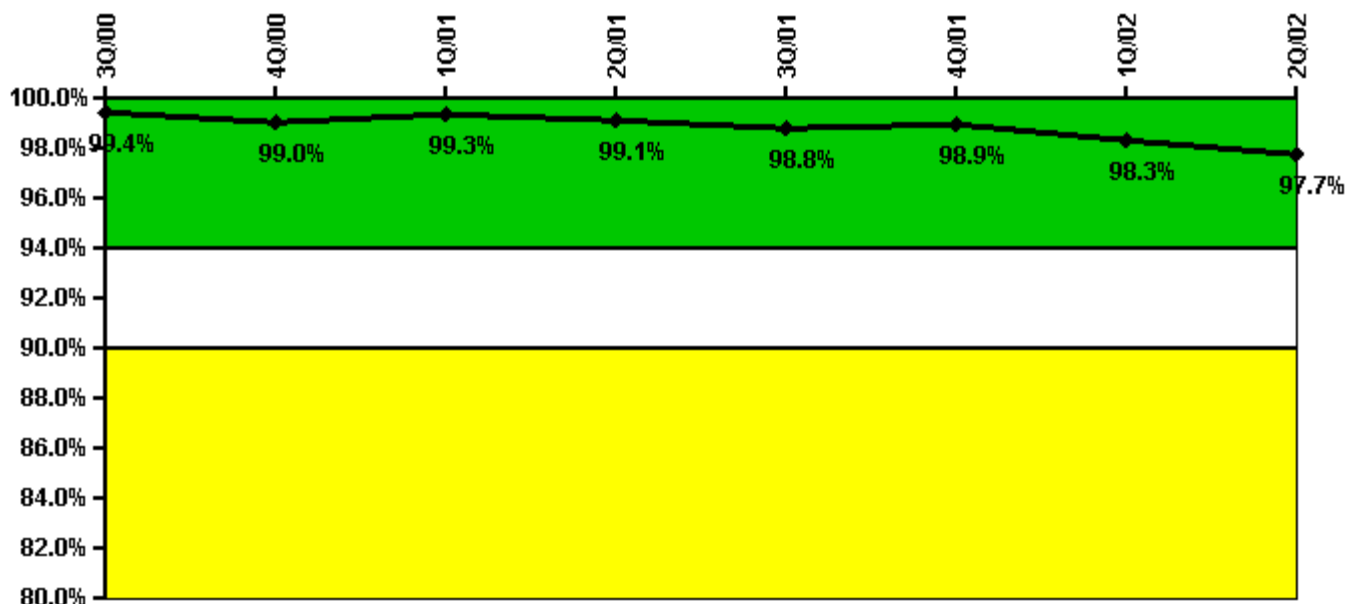
Thresholds: White < 80.0% Yellow < 60.0%

#### Notes

ERO Drill Participation	3Q/00	4Q/00	1Q/01	2Q/01	3Q/01	4Q/01	1Q/02	2Q/02
Participating Key personnel	110.0	109.0	96.0	111.0	111.0	120.0	112.0	111.0
Total Key personnel	116.0	116.0	102.0	121.0	122.0	125.0	124.0	118.0
Indicator value	94.8%	94.0%	94.1%	91.7%	91.0%	96.0%	90.3%	94.1%

Licensee Comments: none

### Alert & Notification System



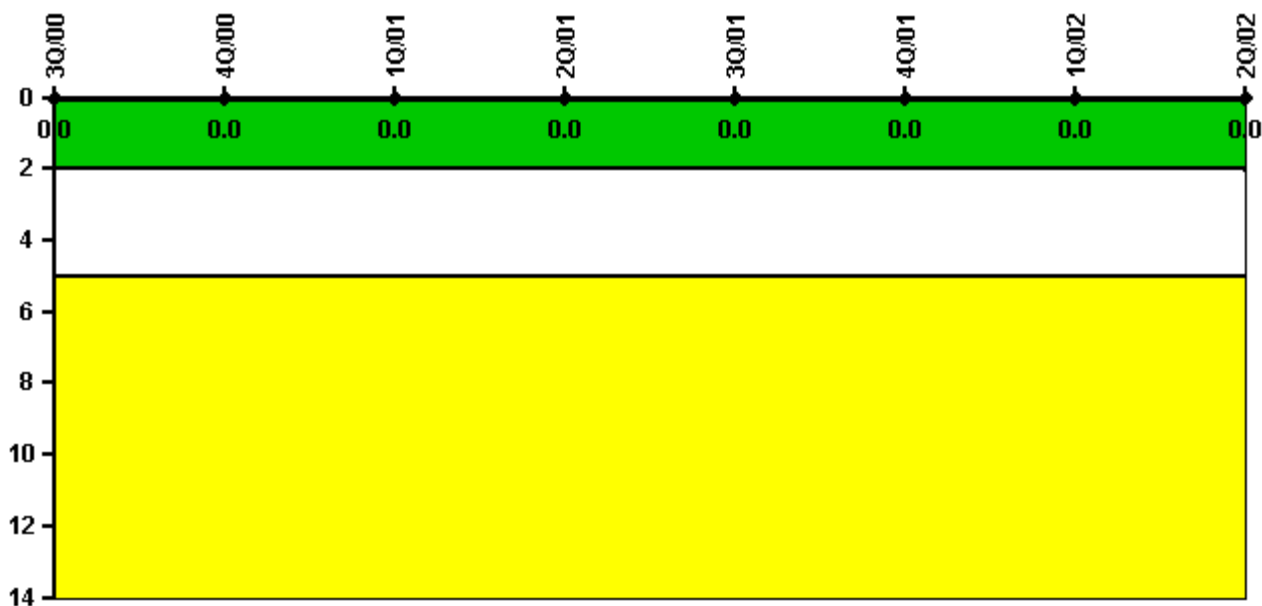
Thresholds: White < 94.0% Yellow < 90.0%

#### Notes

Alert & Notification System	3Q/00	4Q/00	1Q/01	2Q/01	3Q/01	4Q/01	1Q/02	2Q/02
Successful siren-tests	186	212	189	223	189	220	186	218
Total sirens-tests	186	217	190	224	192	224	192	224
Indicator value	99.4%	99.0%	99.3%	99.1%	98.8%	98.9%	98.3%	97.7%

Licensee Comments: none

### Occupational Exposure Control Effectiveness



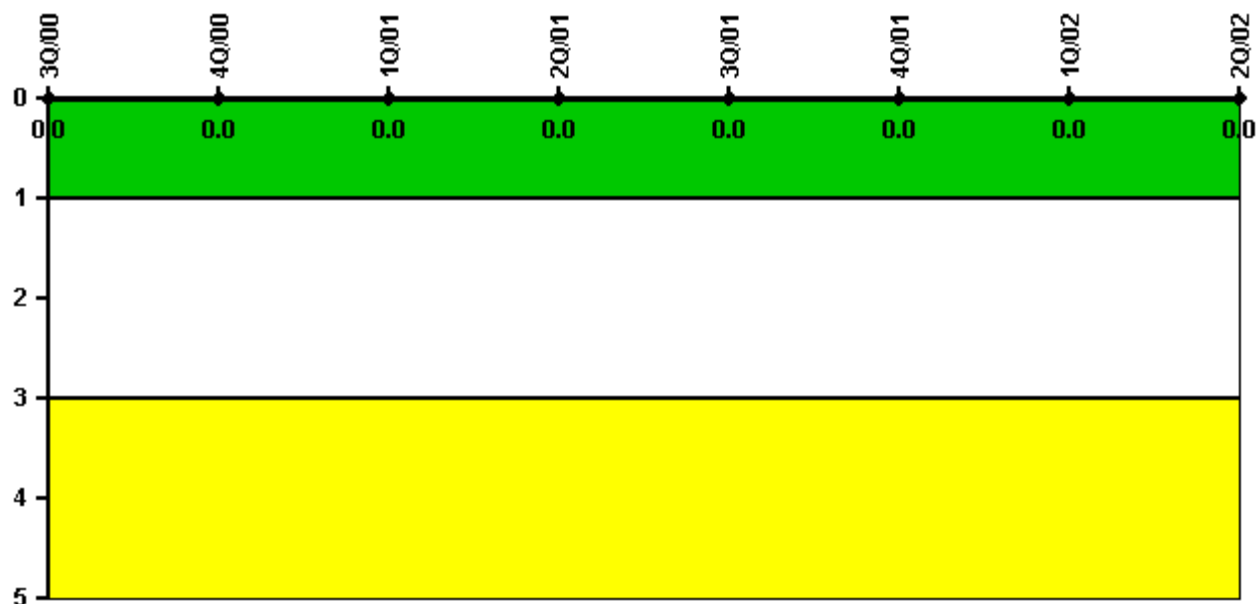
Thresholds: White > 2.0 Yellow > 5.0

#### Notes

Occupational Exposure Control Effectiveness	3Q/00	4Q/00	1Q/01	2Q/01	3Q/01	4Q/01	1Q/02	2Q/02
High radiation area occurrences	0	0	0	0	0	0	0	0
Very high radiation area occurrences	0	0	0	0	0	0	0	0
Unintended exposure occurrences	0	0	0	0	0	0	0	0
Indicator value	0	0	0	0	0	0	0	0

Licensee Comments: none

### RETS/ODCM Radiological Effluent



Thresholds: White > 1.0 Yellow > 3.0

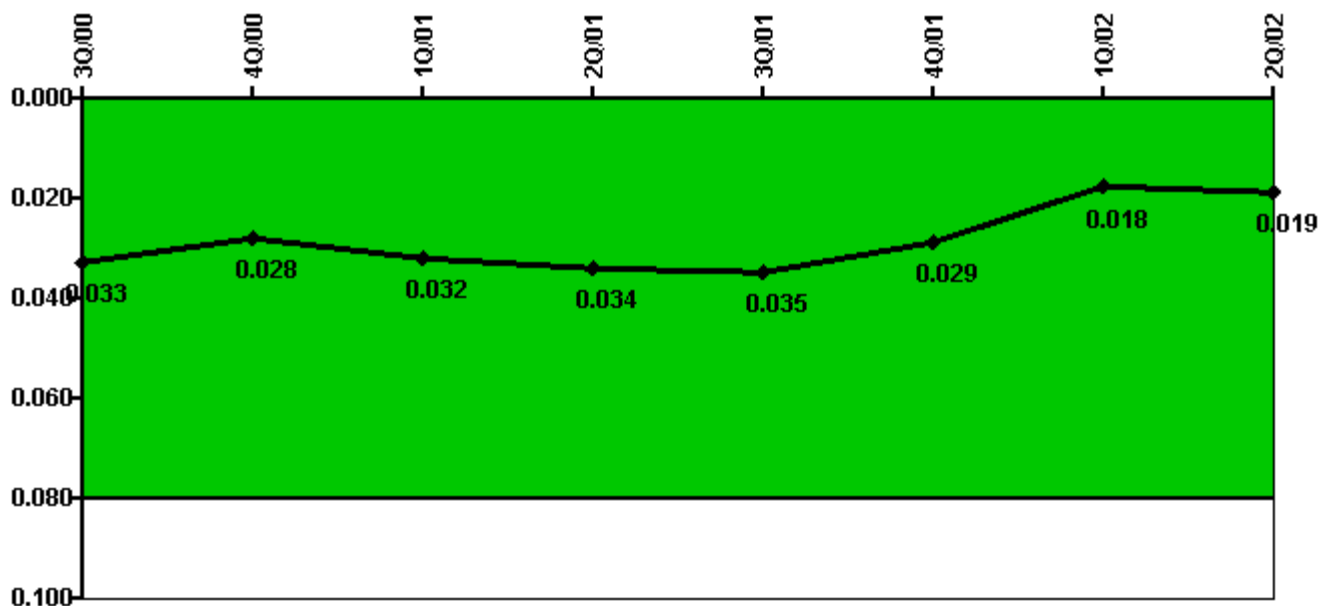
#### Notes

RETS/ODCM Radiological Effluent	3Q/00	4Q/00	1Q/01	2Q/01	3Q/01	4Q/01	1Q/02	2Q/02
RETS/ODCM occurrences	0	0	0	0	0	0	0	0
Indicator value	0	0	0	0	0	0	0	0

Licensee Comments: none



### Protected Area Security Performance Index



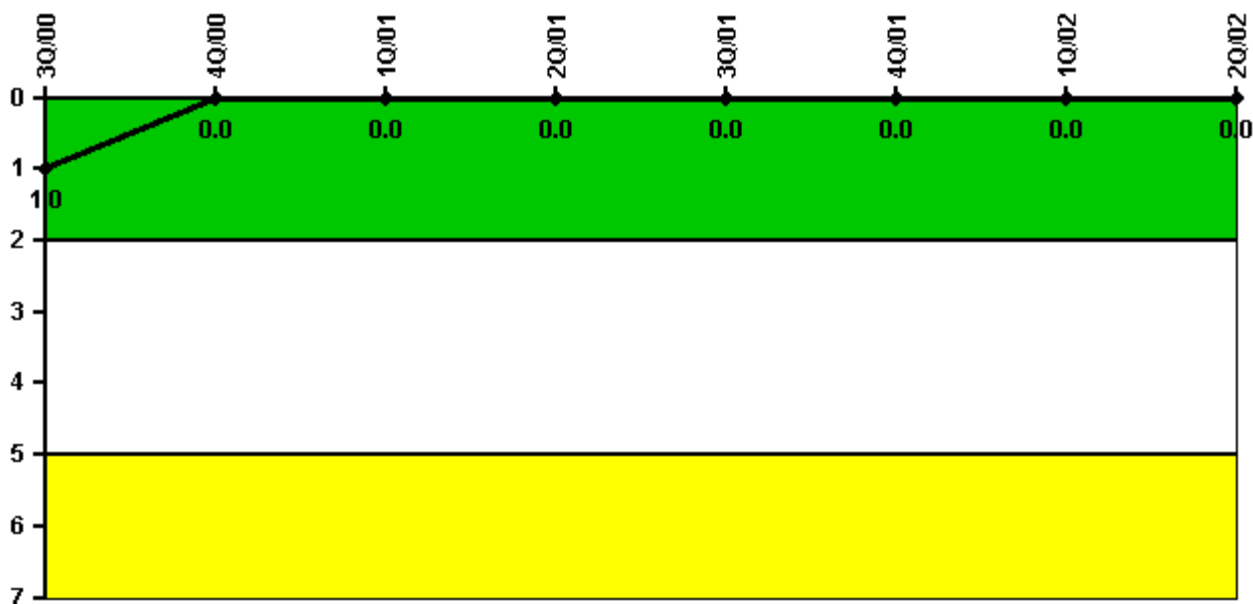
Thresholds: White > 0.080

#### Notes

Protected Area Security Performance Index	3Q/00	4Q/00	1Q/01	2Q/01	3Q/01	4Q/01	1Q/02	2Q/02
IDS compensatory hours	200.70	282.90	251.50	106.10	145.80	143.90	77.50	139.70
CCTV compensatory hours	3.6	69.4	163.5	41.4	66.3	16.6	11.9	41.3
IDS normalization factor	2.20	2.20	2.20	2.20	2.20	2.20	2.20	2.20
CCTV normalization factor	1.3	1.3	1.3	1.3	1.3	1.3	1.3	1.3
Index Value	0.033	0.028	0.032	0.034	0.035	0.029	0.018	0.019

Licensee Comments: none

### Personnel Screening Program



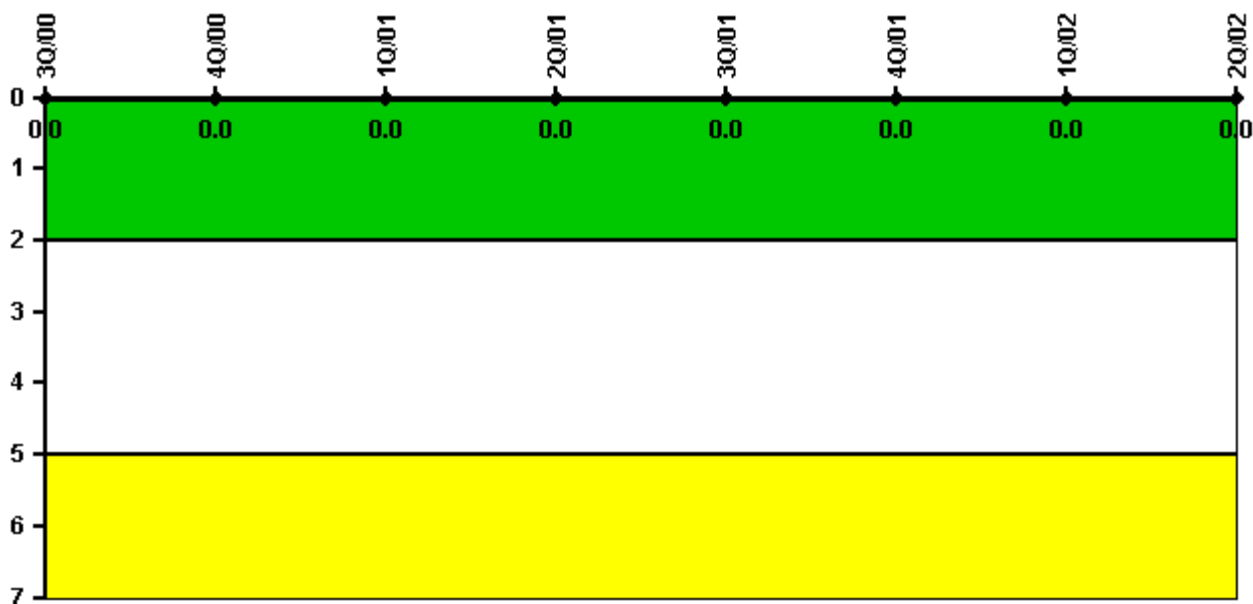
Thresholds: White > 2.0 Yellow > 5.0

#### Notes

Personnel Screening Program	3Q/00	4Q/00	1Q/01	2Q/01	3Q/01	4Q/01	1Q/02	2Q/02
Program failures	0	0	0	0	0	0	0	0
Indicator value	1	0	0	0	0	0	0	0

Licensee Comments: none

### FFD/Personnel Reliability



Thresholds: White > 2.0 Yellow > 5.0

#### Notes

FFD/Personnel Reliability	3Q/00	4Q/00	1Q/01	2Q/01	3Q/01	4Q/01	1Q/02	2Q/02
Program Failures	0	0	0	0	0	0	0	0
Indicator value	0	0	0	0	0	0	0	0

Licensee Comments: none

▲ [PI Summary](#) | [Inspection Findings Summary](#) | [Reactor Oversight Process](#)

Last Modified: July 31, 2002