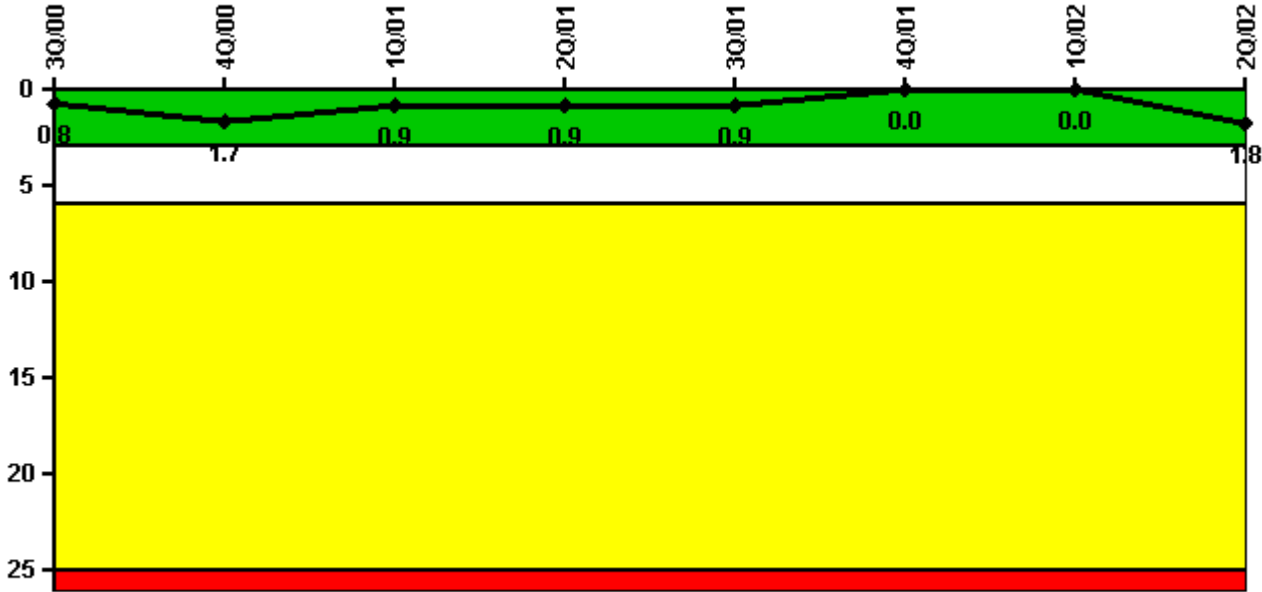


# Sequoyah 2

## 2Q/2002 Performance Indicators

Licensee's General Comments: none

### Unplanned Scrams per 7000 Critical Hrs



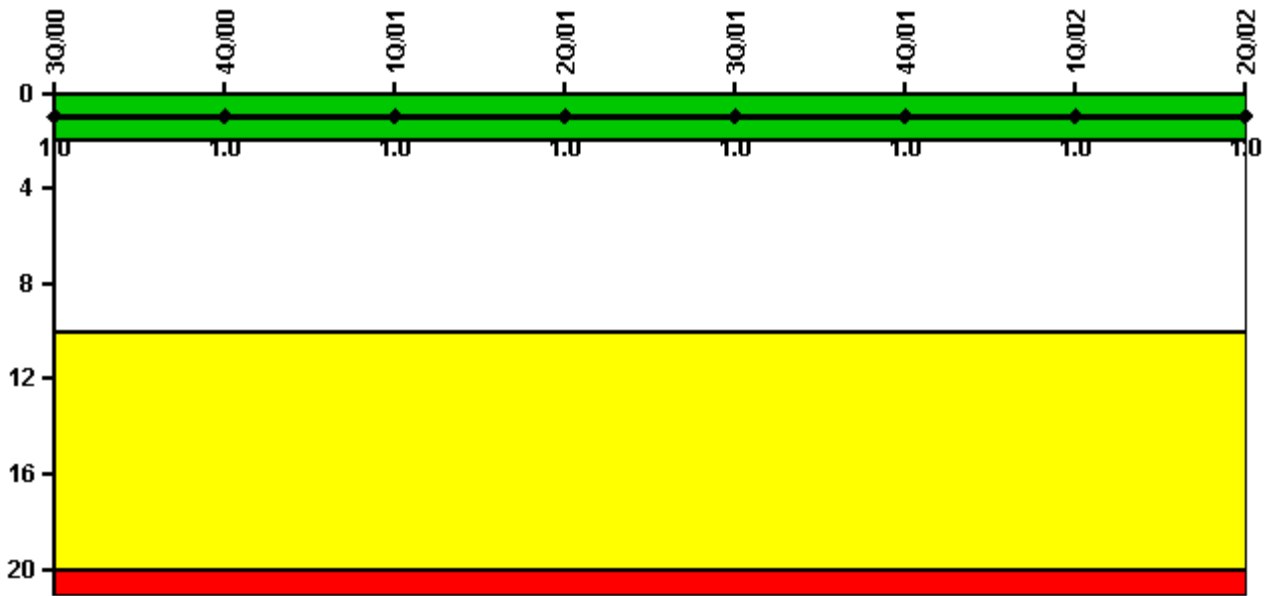
**Thresholds: White > 3.0 Yellow > 6.0 Red > 25.0**

**Notes**

Unplanned Scrams per 7000 Critical Hrs	3Q/00	4Q/00	1Q/01	2Q/01	3Q/01	4Q/01	1Q/02	2Q/02
Unplanned scrams	0	1.0	0	0	0	0	0	2.0
Critical hours	2208.0	1656.2	2160.0	2183.0	2208.0	2209.0	2160.0	1310.0
Indicator value	0.8	1.7	0.9	0.9	0.9	0	0	1.8

Licensee Comments: none

### Scrams with Loss of Normal Heat Removal



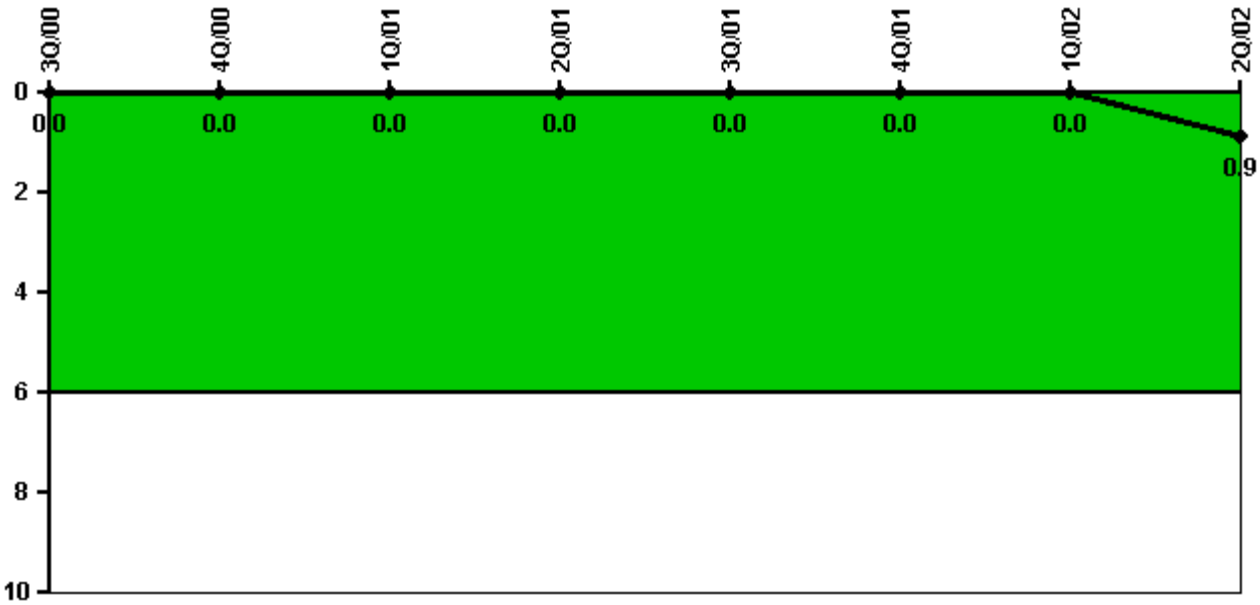
Thresholds: White > 2.0 Yellow > 10.0 Red > 20.0

#### Notes

Scrams with Loss of Normal Heat Removal	3Q/00	4Q/00	1Q/01	2Q/01	3Q/01	4Q/01	1Q/02	2Q/02
Scrams	0	0	0	0	0	0	0	0
Indicator value	1.0	1.0	1.0	1.0	1.0	1.0	1.0	1.0

Licensee Comments: none

### Unplanned Power Changes per 7000 Critical Hrs



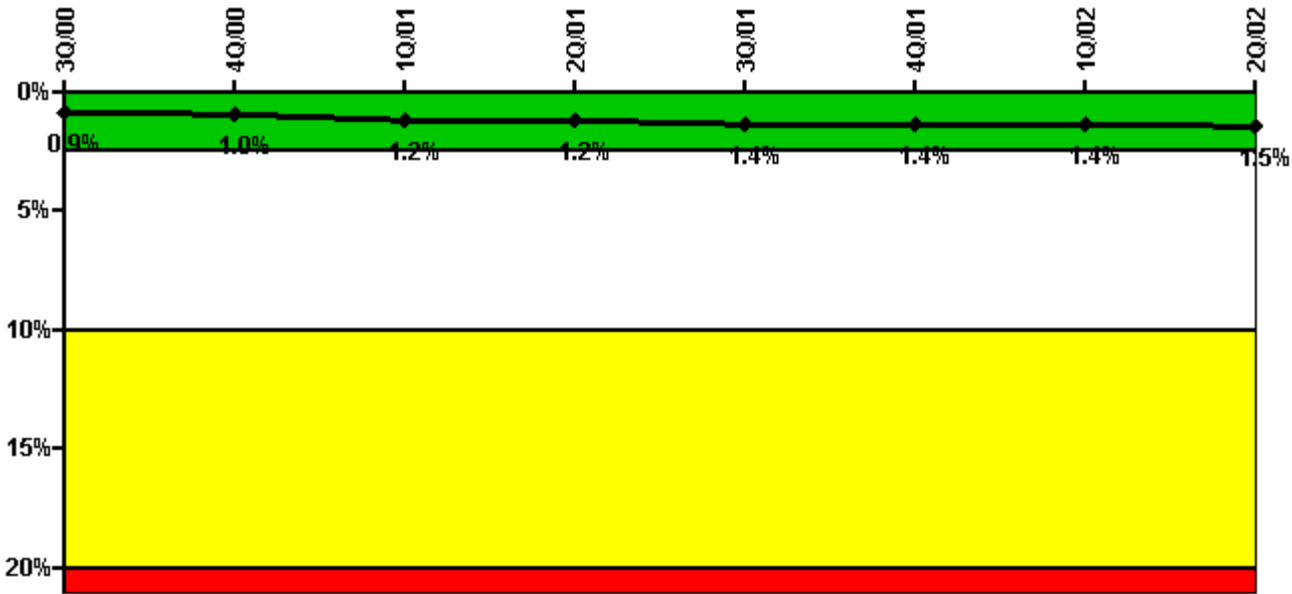
Thresholds: White > 6.0

#### Notes

Unplanned Power Changes per 7000 Critical Hrs	3Q/00	4Q/00	1Q/01	2Q/01	3Q/01	4Q/01	1Q/02	2Q/02
Unplanned power changes	0	0	0	0	0	0	0	1.0
Critical hours	2208.0	1656.2	2160.0	2183.0	2208.0	2209.0	2160.0	1310.0
Indicator value	0	0	0	0	0	0	0	0.9

Licensee Comments: none

### Safety System Unavailability, Emergency AC Power, >2EDG



Thresholds: White > 2.5% Yellow > 10.0% Red > 20.0%

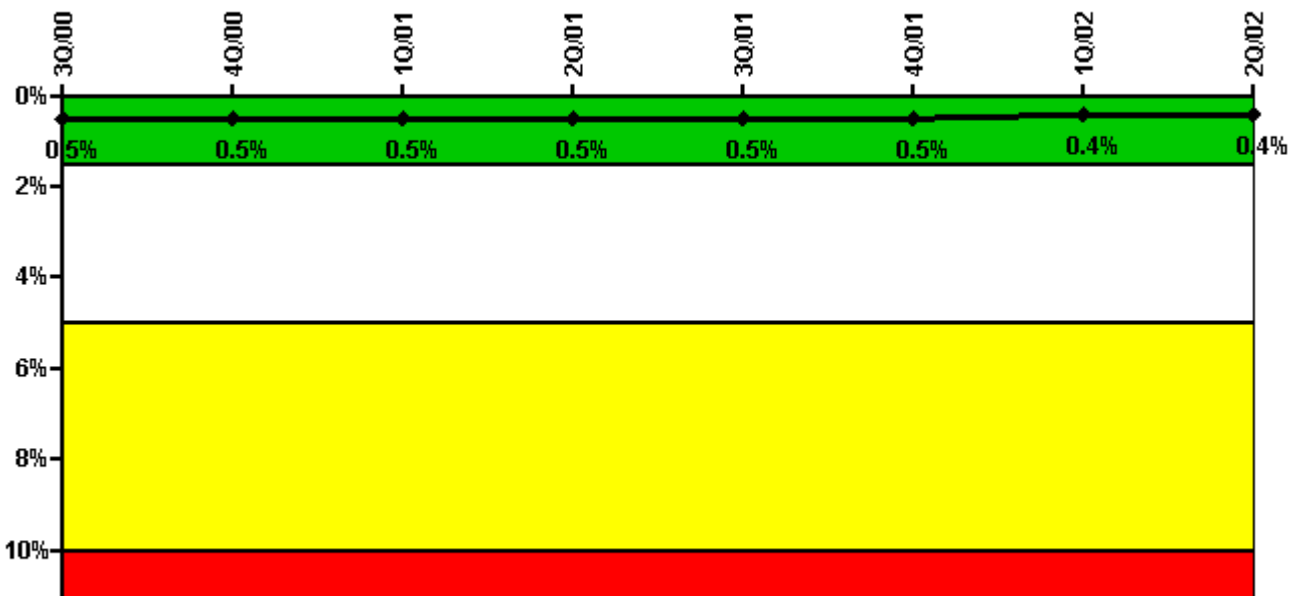
#### Notes

Safety System Unavailability, Emergency AC Power, >2EDG	3Q/00	4Q/00	1Q/01	2Q/01	3Q/01	4Q/01	1Q/02	2Q/02
<b>Train 1</b>								
Planned unavailable hours	9.47	17.92	87.97	4.50	90.72	123.50	91.92	26.38
Unplanned unavailable hours	0	3.77	0	0	0	0	0	0
Fault exposure hours	0	0	0	0	0	0	0	0
Effective Reset hours	0	0	0	0	0	0	0	0
Required hours	2208.00	2209.00	2160.00	2183.00	2208.00	2209.00	2160.00	2183.00
<b>Train 2</b>								
Planned unavailable hours	2.20	6.15	57.22	3.62	2.53	7.08	4.53	26.40
Unplanned unavailable hours	0	14.53	0	0	0	0	0	0
Fault exposure hours	0	0	0	0	0	0	0	0
Effective Reset hours	0	0	0	0	0	0	0	0
Required hours	2208.00	2209.00	2160.00	2183.00	2208.00	2209.00	2160.00	2183.00
<b>Train 3</b>								
Planned unavailable hours	2.78	13.10	131.72	4.13	2.13	1.95	161.88	61.87
Unplanned unavailable hours	0	24.53	0	0	0	24.17	0	5.10
Fault exposure hours	0	0	0	0	0	0	0	0
Effective Reset hours	0	0	0	0	0	0	0	0
Required hours	2208.00	2209.00	2160.00	2183.00	2208.00	2209.00	2160.00	2183.00
<b>Train 4</b>								
Planned unavailable hours	4.52	10.50	157.67	8.33	57.95	9.87	19.82	23.28
Unplanned unavailable hours	0	0	0	0	0	0	15.05	0
Fault exposure hours	0	0	0	0	0	0	0	0
Effective Reset hours	0	0	0	0	0	0	0	0
Required hours	2208.00	2209.00	2160.00	2183.00	2208.00	2209.00	2160.00	2183.00

Indicator value	0.9%	1.0%	1.2%	1.2%	1.4%	1.4%	1.4%	1.5%

Licensee Comments: none

### Safety System Unavailability, High Pressure Injection System (HPSI)



Thresholds: White > 1.5% Yellow > 5.0% Red > 10.0%

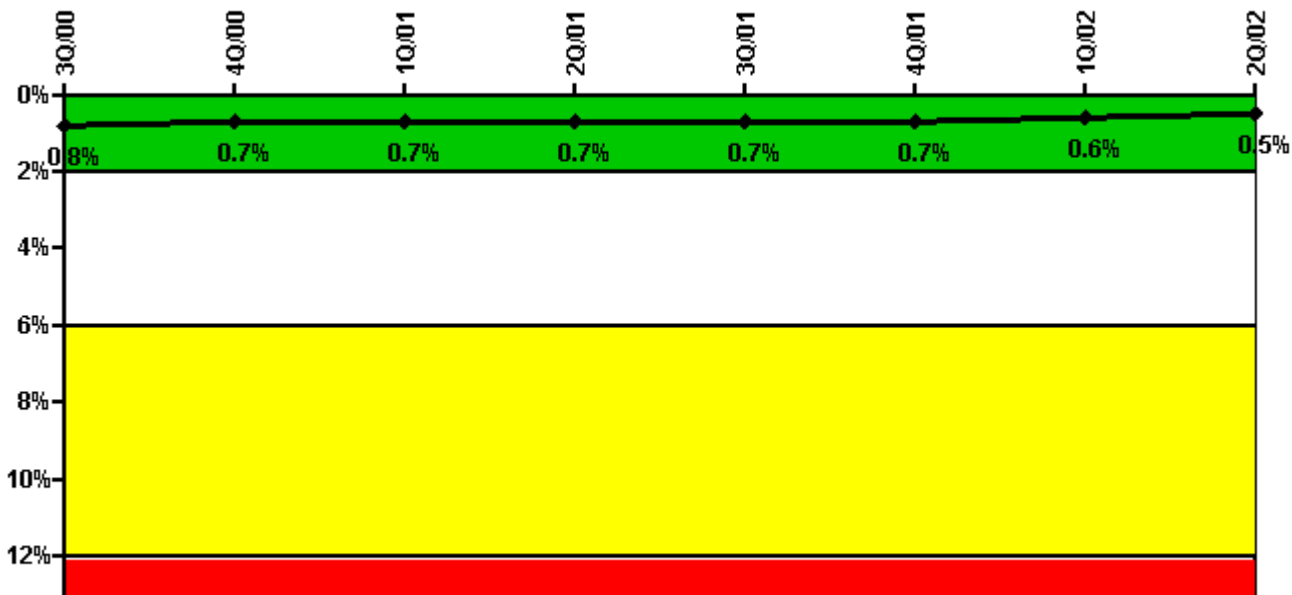
### Notes

Safety System Unavailability, High Pressure Injection System (HPSI)	3Q/00	4Q/00	1Q/01	2Q/01	3Q/01	4Q/01	1Q/02	2Q/02
<b>Train 1</b>								
Planned unavailable hours	10.40	2.30	10.70	3.70	17.10	2.40	3.90	0
Unplanned unavailable hours	0	0	0	0	0	4.10	0	0
Fault exposure hours	0	0	0	0	0	0	0	0
Effective Reset hours	0	0	0	0	0	0	0	0
Required hours	2208.00	1748.40	2160.00	2183.00	2208.00	2209.00	2160.00	1441.20
<b>Train 2</b>								
Planned unavailable hours	3.10	19.70	3.90	11.50	16.90	3.50	3.60	1.70
Unplanned unavailable hours	0	9.90	0	0	0	0	0	0
Fault exposure hours	0	0	0	0	0	0	0	0
Effective Reset hours	0	0	0	0	0	0	0	0
Required hours	2208.00	1748.40	2160.00	2183.00	2208.00	2209.00	2160.00	1441.20
<b>Train 3</b>								

Planned unavailable hours	11.00	5.40	7.30	6.10	9.00	4.40	5.20	0.70
Unplanned unavailable hours	0	0	0	0	0	0	0	0
Fault exposure hours	0	0	0	0	0	0	0	0
Effective Reset hours	0	0	0	0	0	0	0	0
Required hours	2208.00	1734.10	2160.00	2183.00	2208.00	2209.00	2160.00	1420.80
<b>Train 4</b>								
Planned unavailable hours	15.80	1.70	4.90	9.00	20.60	4.00	6.60	1.80
Unplanned unavailable hours	0	9.90	0	0	0	0	0	0
Fault exposure hours	0	0	0	0	0	0	0	0
Effective Reset hours	0	0	0	0	0	0	0	0
Required hours	2208.00	1734.10	2160.00	2183.00	2208.00	2209.00	2160.00	1420.80
<b>Indicator value</b>	<b>0.5%</b>	<b>0.5%</b>	<b>0.5%</b>	<b>0.5%</b>	<b>0.5%</b>	<b>0.5%</b>	<b>0.4%</b>	<b>0.4%</b>

Licensee Comments: none

### Safety System Unavailability, Heat Removal System (AFW)



Thresholds: White > 2.0% Yellow > 6.0% Red > 12.0%

### Notes

Safety System Unavailability, Heat Removal System (AFW)	3Q/00	4Q/00	1Q/01	2Q/01	3Q/01	4Q/01	1Q/02	2Q/02
<b>Train 1</b>								
Planned unavailable hours	15.38	12.70	2.80	12.08	3.17	16.32	25.35	0.90
Unplanned unavailable hours	0	0	0	0	0	0	0	0

Fault exposure hours	0	0	0	0	0	0	0	0
Effective Reset hours	0	0	0	0	0	0	0	0
Required hours	2208.00	1734.10	2160.00	2183.00	2208.00	2209.00	2160.00	1441.13
<b>Train 2</b>								
Planned unavailable hours	19.11	5.51	4.61	11.60	6.21	11.28	3.44	2.30
Unplanned unavailable hours	0	0	0	0	0	0	0	0
Fault exposure hours	0	0	0	0	0	0	0	0
Effective Reset hours	0	0	0	0	0	0	0	0
Required hours	2208.00	1748.40	2160.00	2183.00	2208.00	2209.00	2160.00	1420.79
<b>Train 3</b>								
Planned unavailable hours	2.58	0.77	13.70	3.95	6.54	4.12	5.47	8.36
Unplanned unavailable hours	0	6.80	0	0	0	0	0	0
Fault exposure hours	0	0	0	0	0	0	0	0
Effective Reset hours	0	0	0	0	0	0	0	0
Required hours	2208.00	1710.10	2160.00	2183.00	2208.00	2209.00	2160.00	1385.49
<b>Indicator value</b>	<b>0.8%</b>	<b>0.7%</b>	<b>0.7%</b>	<b>0.7%</b>	<b>0.7%</b>	<b>0.7%</b>	<b>0.6%</b>	<b>0.5%</b>

Licensee Comments: none

### Safety System Unavailability, Residual Heat Removal System



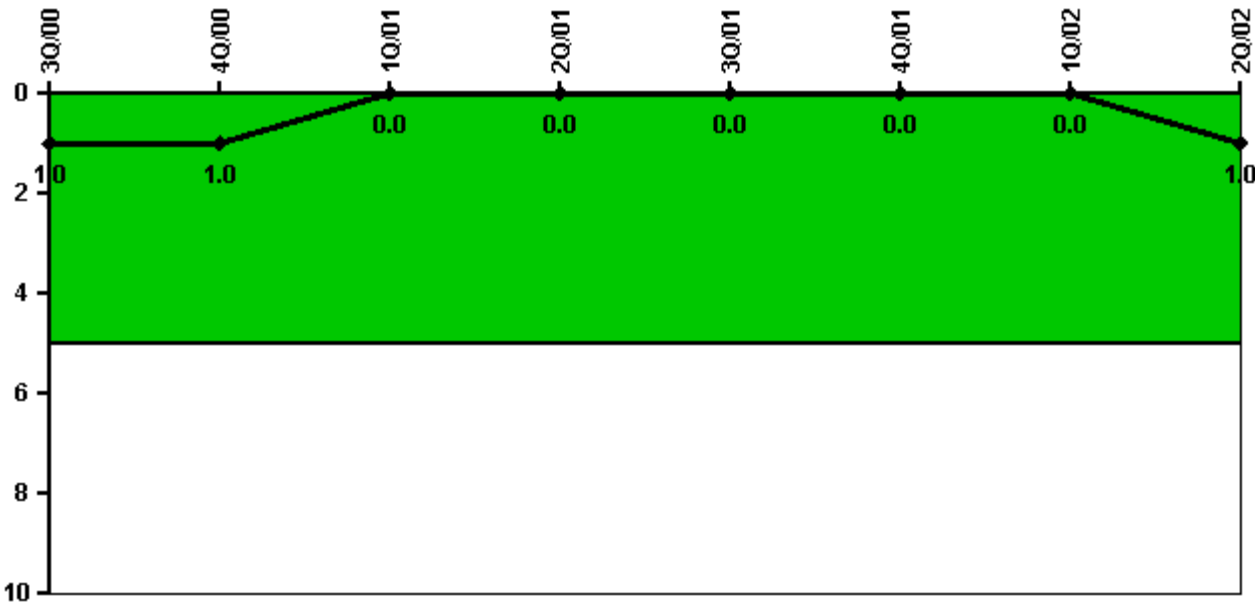
Thresholds: White > 1.5% Yellow > 5.0% Red > 10.0%

#### Notes

Safety System Unavailability, Residual Heat Removal System	3Q/00	4Q/00	1Q/01	2Q/01	3Q/01	4Q/01	1Q/02	2Q/02
<b>Train 1</b>								
Planned unavailable hours	15.30	11.80	20.50	10.10	7.70	4.80	17.90	11.70
Unplanned unavailable hours	0	0	3.20	54.40	0	0	0	0
Fault exposure hours	0	0	0	0	0	0	0	0
Effective Reset hours	0	0	0	0	0	0	0	0
Required hours	2208.00	2131.70	2160.00	2183.00	2208.00	2209.00	2160.00	1831.00
<b>Train 2</b>								
Planned unavailable hours	27.10	17.60	3.20	3.10	16.20	12.60	24.30	13.20
Unplanned unavailable hours	0	9.90	0	0	0	0	0	0
Fault exposure hours	0	0	0	0	0	0	0	0
Effective Reset hours	0	0	0	0	0	0	0	0
Required hours	2208.00	2131.70	2160.00	2183.00	2208.00	2209.00	2160.00	1831.00
<b>Indicator value</b>	<b>0.7%</b>	<b>0.6%</b>	<b>0.7%</b>	<b>0.8%</b>	<b>0.8%</b>	<b>0.8%</b>	<b>0.7%</b>	<b>0.7%</b>

Licensee Comments: none

### Safety System Functional Failures (PWR)



Thresholds: White > 5.0

### Notes

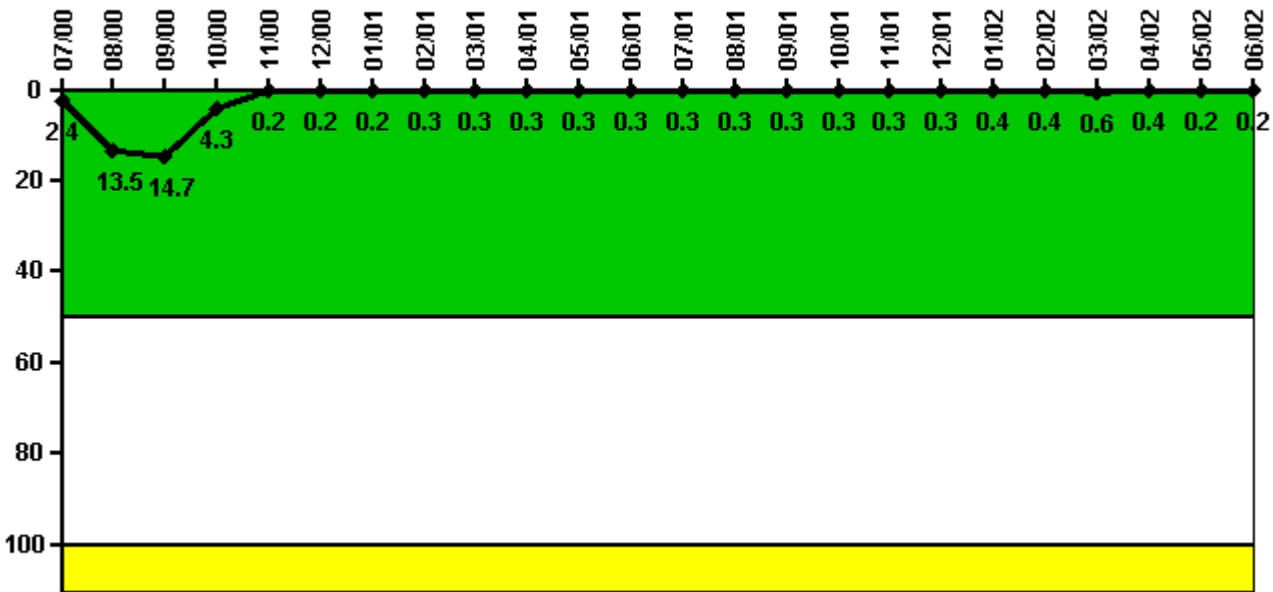
Safety System Functional Failures (PWR)	3Q/00	4Q/00	1Q/01	2Q/01	3Q/01	4Q/01	1Q/02	2Q/02
Safety System Functional Failures	0	0	0	0	0	0	0	1



Indicator value	1	1	0	0	0	0	0	1

Licensee Comments: none

### Reactor Coolant System Activity



Thresholds: White > 50.0 Yellow > 100.0

### Notes

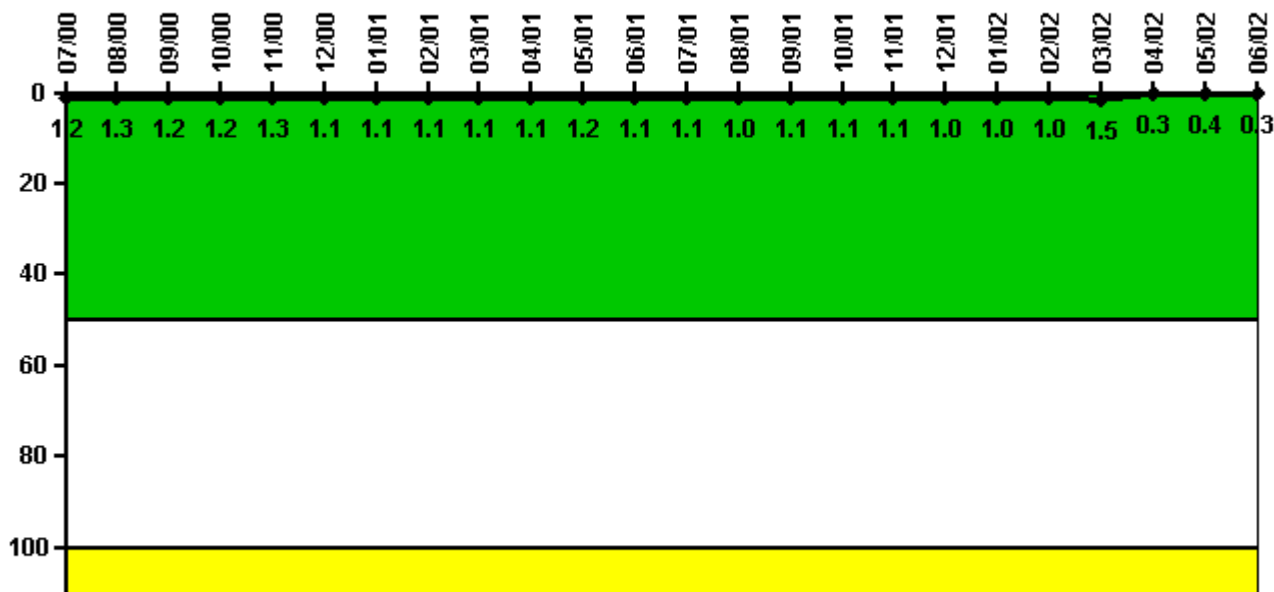
Reactor Coolant System Activity	7/00	8/00	9/00	10/00	11/00	12/00	1/01	2/01	3/01	4/01	5/01	6/01
Maximum activity	0.008430	0.047300	0.051400	0.010800	0.000613	0.000584	0.000590	0.000789	0.000635	0.000667	0.000742	0.000694
Technical specification limit	0.4	0.4	0.4	0.3	0.3	0.3	0.3	0.3	0.3	0.3	0.3	0.3
Indicator value	2.4	13.5	14.7	4.3	0.2	0.2	0.2	0.3	0.3	0.3	0.3	0.3

Reactor Coolant System Activity	7/01	8/01	9/01	10/01	11/01	12/01	1/02	2/02	3/02	4/02	5/02	6/02
Maximum activity	0.000774	0.000760	0.000780	0.000763	0.000847	0.000794	0.000880	0.000909	0.001570	0.001070	0.000390	0.000501
Technical specification limit	0.3	0.3	0.3	0.3	0.3	0.3	0.3	0.3	0.3	0.3	0.3	0.3
Indicator value	0.3	0.3	0.3	0.3	0.3	0.3	0.4	0.4	0.6	0.4	0.2	0.2

Licensee Comments: none

### Reactor Coolant System Leakage



Thresholds: White > 50.0 Yellow > 100.0

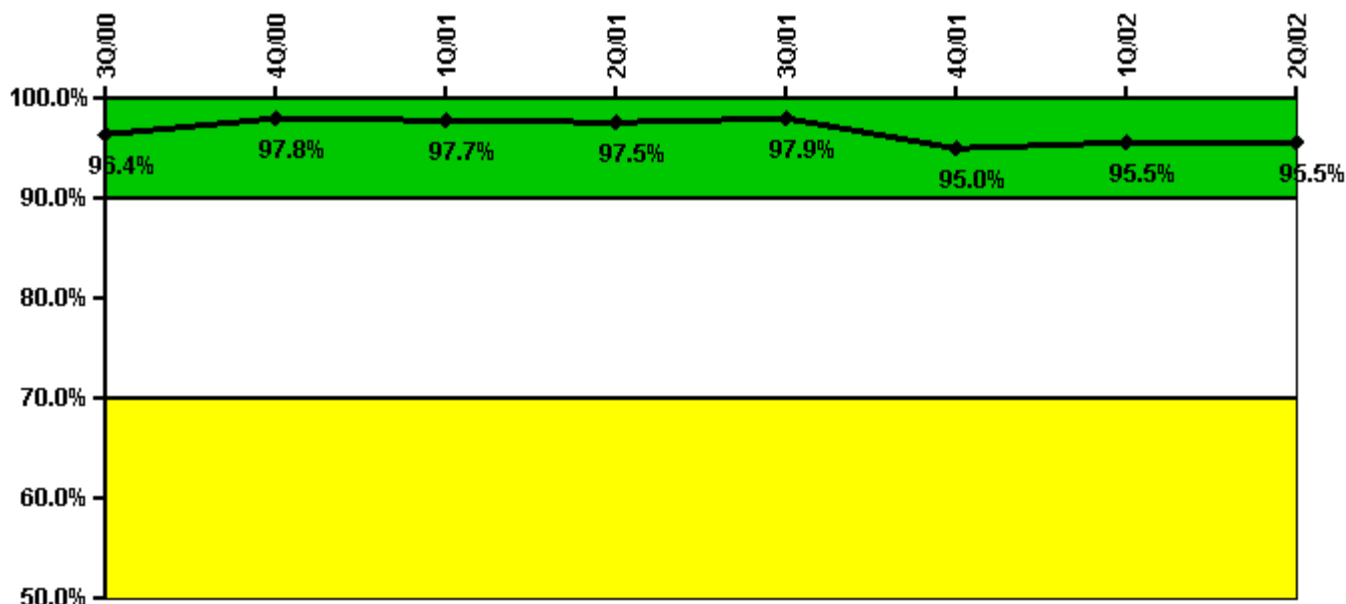
#### Notes

Reactor Coolant System Leakage	7/00	8/00	9/00	10/00	11/00	12/00	1/01	2/01	3/01	4/01	5/01	6/01
Maximum leakage	0.120	0.130	0.120	0.120	0.130	0.110	0.110	0.110	0.110	0.110	0.120	0.110
Technical specification limit	10.0	10.0	10.0	10.0	10.0	10.0	10.0	10.0	10.0	10.0	10.0	10.0
Indicator value	1.2	1.3	1.2	1.2	1.3	1.1	1.1	1.1	1.1	1.1	1.2	1.1
Reactor Coolant System Leakage	7/01	8/01	9/01	10/01	11/01	12/01	1/02	2/02	3/02	4/02	5/02	6/02
Maximum leakage	0.110	0.100	0.110	0.110	0.110	0.100	0.100	0.100	0.150	0.030	0.040	0.030
Technical specification limit	10.0	10.0	10.0	10.0	10.0	10.0	10.0	10.0	10.0	10.0	10.0	10.0
Indicator value	1.1	1.0	1.1	1.1	1.1	1.0	1.0	1.0	1.5	0.3	0.4	0.3

Licensee Comments:

6/02: P1191

### Drill/Exercise Performance



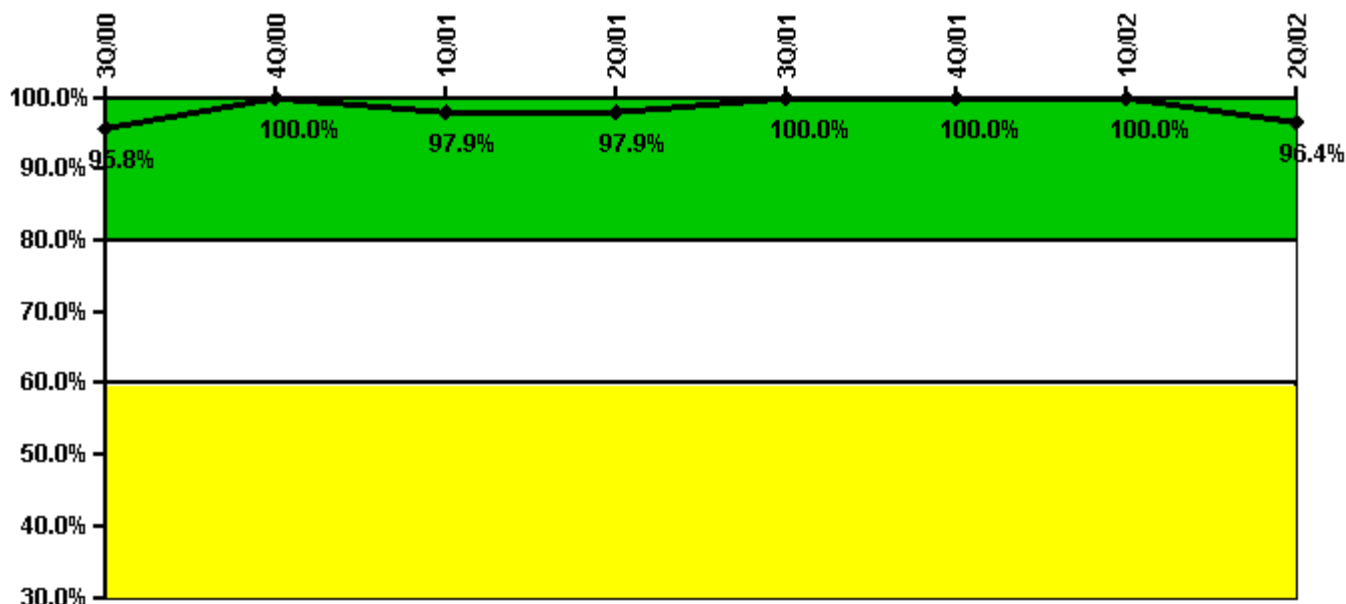
Thresholds: White < 90.0% Yellow < 70.0%

#### Notes

Drill/Exercise Performance	3Q/00	4Q/00	1Q/01	2Q/01	3Q/01	4Q/01	1Q/02	2Q/02
Successful opportunities	23.0	38.0	0	4.0	31.0	30.0	14.0	10.0
Total opportunities	25.0	38.0	0	4.0	32.0	34.0	14.0	10.0
Indicator value	96.4%	97.8%	97.7%	97.5%	97.9%	95.0%	95.5%	95.5%

Licensee Comments: none

### ERO Drill Participation



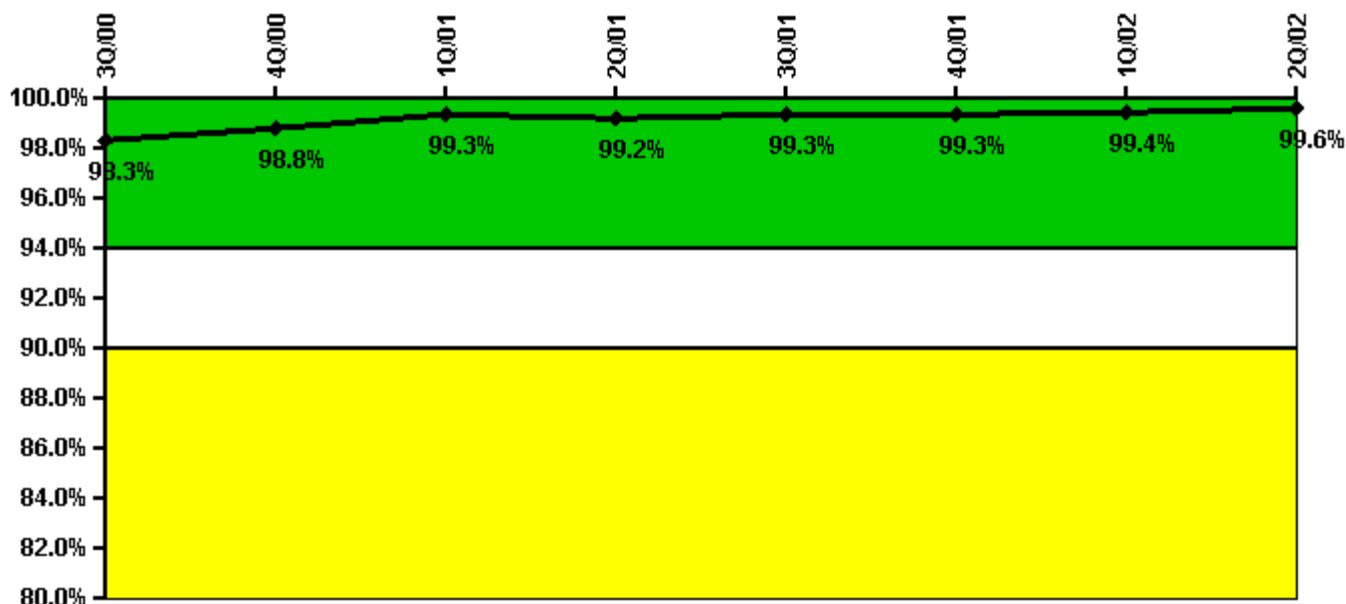
Thresholds: White < 80.0% Yellow < 60.0%

#### Notes

ERO Drill Participation	3Q/00	4Q/00	1Q/01	2Q/01	3Q/01	4Q/01	1Q/02	2Q/02
Participating Key personnel	46.0	47.0	46.0	47.0	56.0	56.0	57.0	54.0
Total Key personnel	48.0	47.0	47.0	48.0	56.0	56.0	57.0	56.0
Indicator value	95.8%	100.0%	97.9%	97.9%	100.0%	100.0%	100.0%	96.4%

Licensee Comments: none

### Alert & Notification System



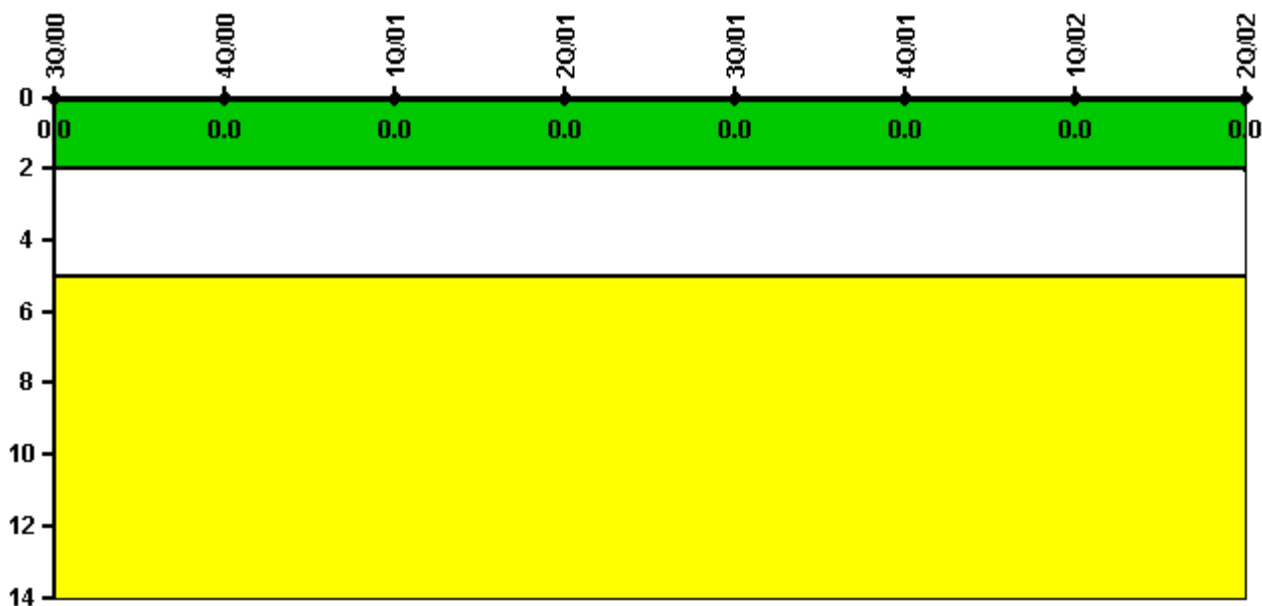
Thresholds: White < 94.0% Yellow < 90.0%

#### Notes

Alert & Notification System	3Q/00	4Q/00	1Q/01	2Q/01	3Q/01	4Q/01	1Q/02	2Q/02
Successful siren-tests	963	863	749	961	859	970	752	968
Total sirens-tests	972	864	756	972	864	972	756	972
Indicator value	98.3%	98.8%	99.3%	99.2%	99.3%	99.3%	99.4%	99.6%

Licensee Comments: none

### Occupational Exposure Control Effectiveness



Thresholds: White > 2.0 Yellow > 5.0

#### Notes

Occupational Exposure Control Effectiveness	3Q/00	4Q/00	1Q/01	2Q/01	3Q/01	4Q/01	1Q/02	2Q/02
High radiation area occurrences	0	0	0	0	0	0	0	0
Very high radiation area occurrences	0	0	0	0	0	0	0	0
Unintended exposure occurrences	0	0	0	0	0	0	0	0
Indicator value	0	0	0	0	0	0	0	0

Licensee Comments: none

### RETS/ODCM Radiological Effluent



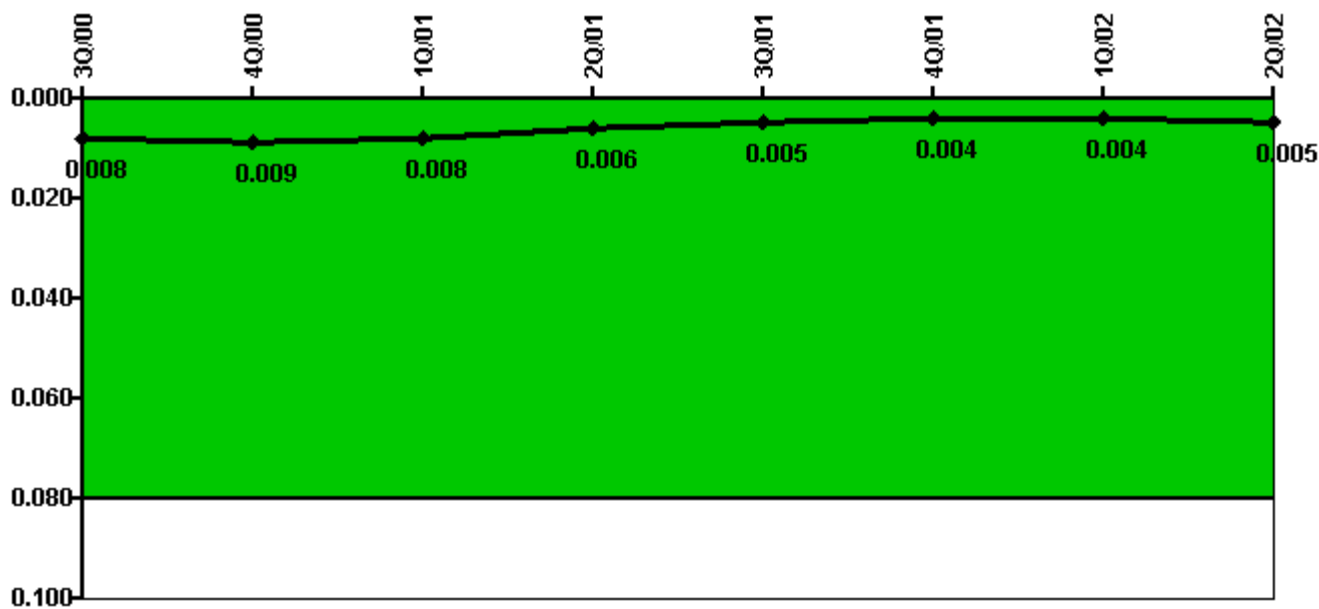
Thresholds: White > 1.0 Yellow > 3.0

#### Notes

RETS/ODCM Radiological Effluent	3Q/00	4Q/00	1Q/01	2Q/01	3Q/01	4Q/01	1Q/02	2Q/02
RETS/ODCM occurrences	0	0	0	0	0	0	0	0
Indicator value	0	0	0	0	0	0	0	0

Licensee Comments: none

### Protected Area Security Performance Index



Thresholds: White > 0.080

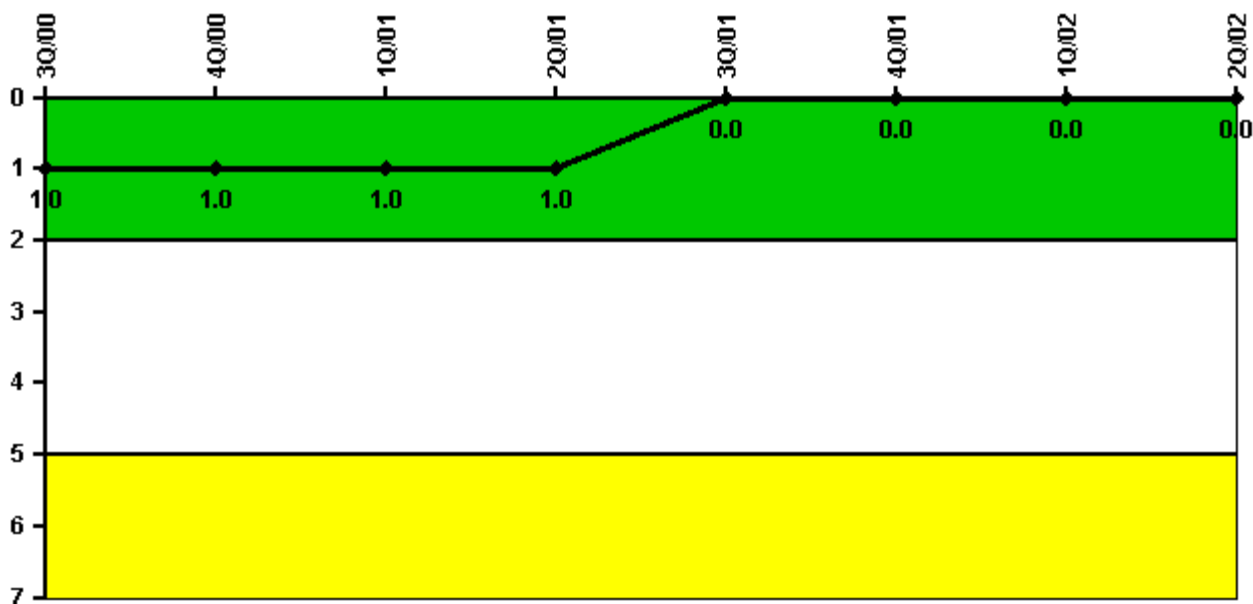
#### Notes

Protected Area Security Performance Index	3Q/00	4Q/00	1Q/01	2Q/01	3Q/01	4Q/01	1Q/02	2Q/02
IDS compensatory hours	117.21	135.00	73.67	42.11	41.09	28.17	50.42	17.83
CCTV compensatory hours	1.3	3.2	0.2	0.2	29.9	0	54.4	58.2
IDS normalization factor	3.65	3.65	3.65	3.65	3.65	3.65	3.65	3.65
CCTV normalization factor	2.7	2.7	2.7	2.7	2.7	2.7	2.7	2.7
Index Value	0.008	0.009	0.008	0.006	0.005	0.004	0.004	0.005

Licensee Comments: none



### Personnel Screening Program



Thresholds: White > 2.0 Yellow > 5.0

#### Notes

Personnel Screening Program	3Q/00	4Q/00	1Q/01	2Q/01	3Q/01	4Q/01	1Q/02	2Q/02
Program failures	1	0	0	0	0	0	0	0
Indicator value	1	1	1	1	0	0	0	0

Licensee Comments: none

### FFD/Personnel Reliability



Thresholds: White > 2.0 Yellow > 5.0

#### Notes

FFD/Personnel Reliability	3Q/00	4Q/00	1Q/01	2Q/01	3Q/01	4Q/01	1Q/02	2Q/02
Program Failures	0	0	0	0	0	0	0	0
Indicator value	0	0	0	0	0	0	0	0

Licensee Comments: none

▲ [PI Summary](#) | [Inspection Findings Summary](#) | [Reactor Oversight Process](#)

Last Modified: July 31, 2002