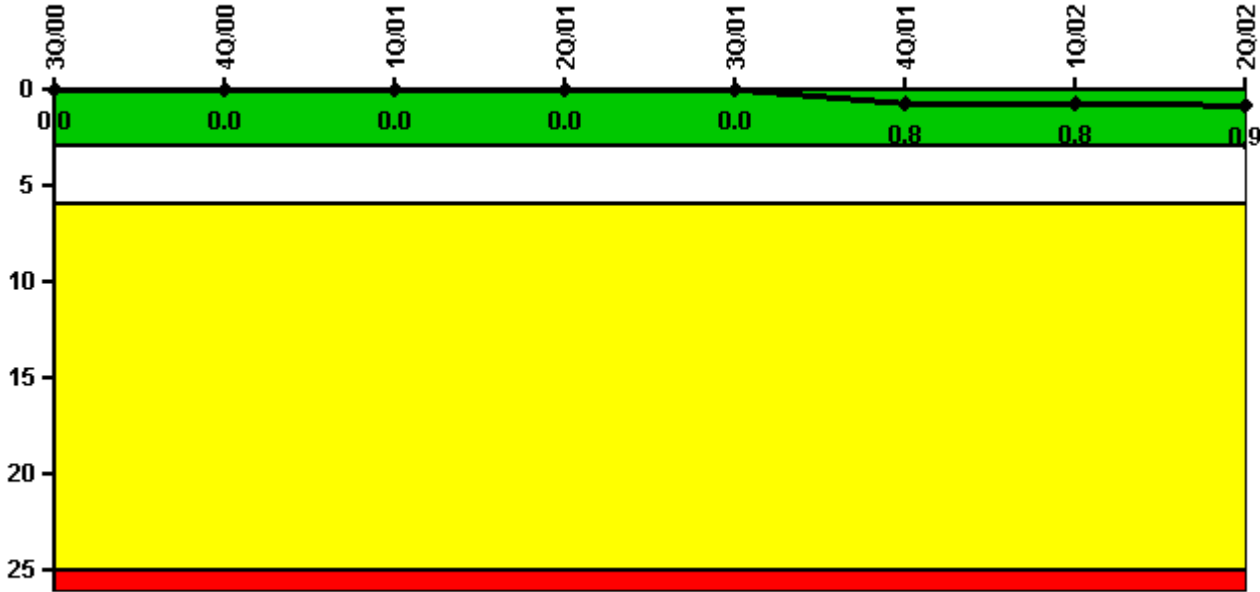


## Salem 2

### 2Q/2002 Performance Indicators

Licensee's General Comments: none

#### Unplanned Scrams per 7000 Critical Hrs



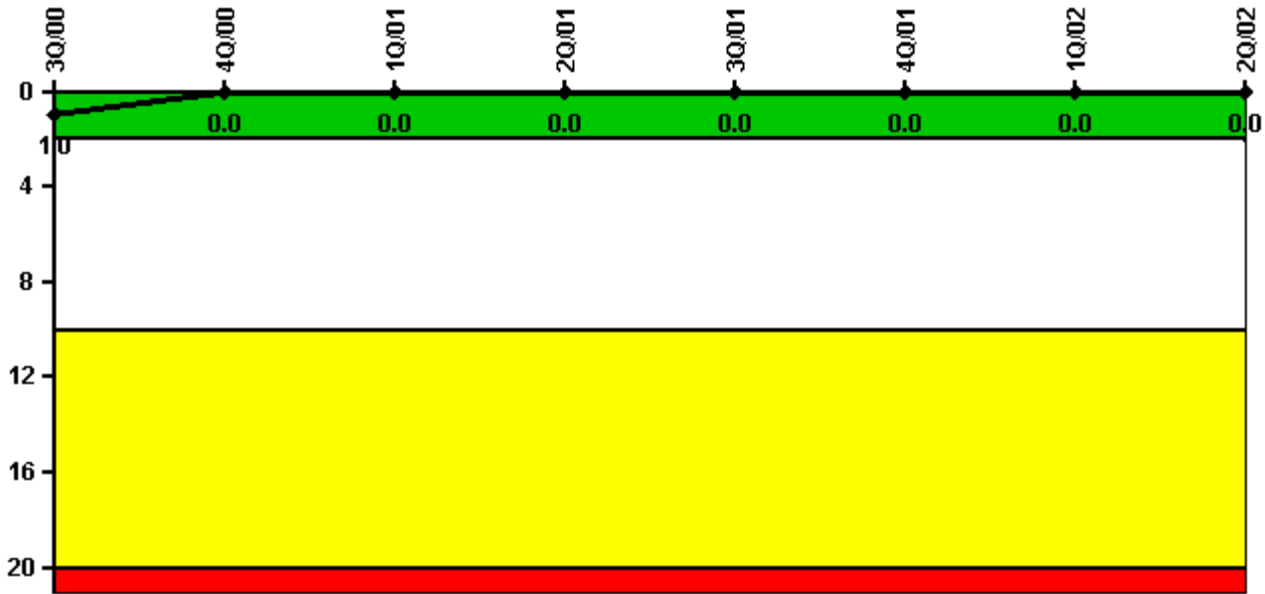
**Thresholds: White > 3.0 Yellow > 6.0 Red > 25.0**

**Notes**

Unplanned Scrams per 7000 Critical Hrs	3Q/00	4Q/00	1Q/01	2Q/01	3Q/01	4Q/01	1Q/02	2Q/02
Unplanned scrams	0	0	0	0	0	1.0	0	0
Critical hours	2208.0	1296.0	2160.0	2183.0	2208.0	2185.0	2054.0	1232.0
Indicator value	0	0	0	0	0	0.8	0.8	0.9

Licensee Comments: none

### Scrams with Loss of Normal Heat Removal



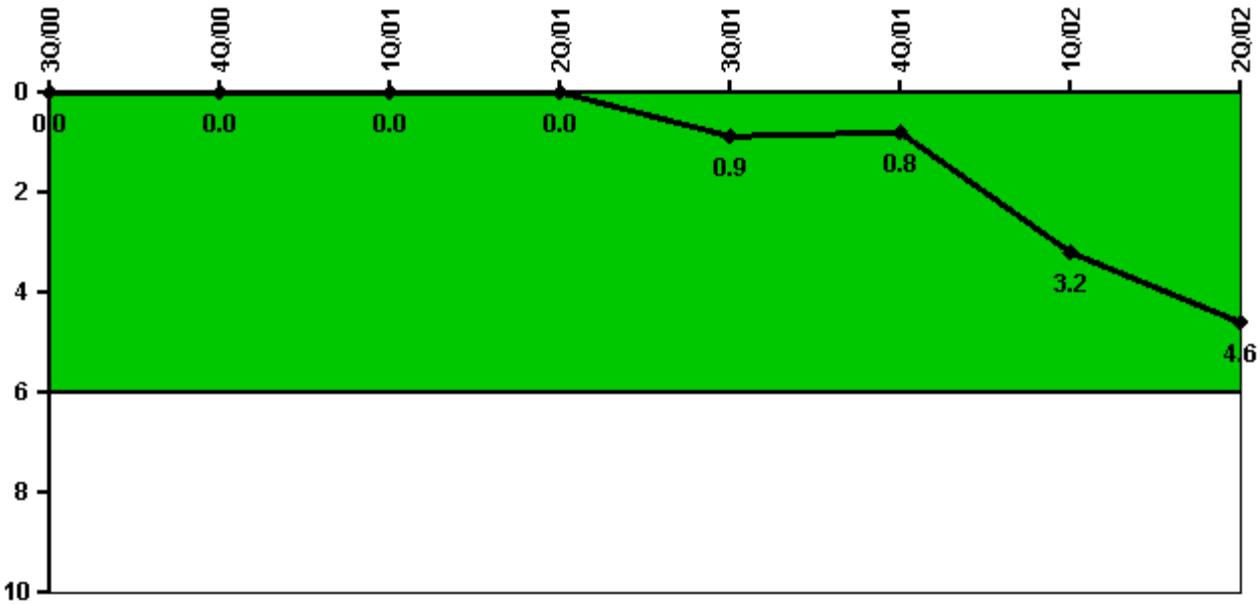
Thresholds: White > 2.0 Yellow > 10.0 Red > 20.0

#### Notes

Scrams with Loss of Normal Heat Removal	3Q/00	4Q/00	1Q/01	2Q/01	3Q/01	4Q/01	1Q/02	2Q/02
Scrams	0	0	0	0	0	0	0	0
Indicator value	1.0	0	0	0	0	0	0	0

Licensee Comments: none

### Unplanned Power Changes per 7000 Critical Hrs



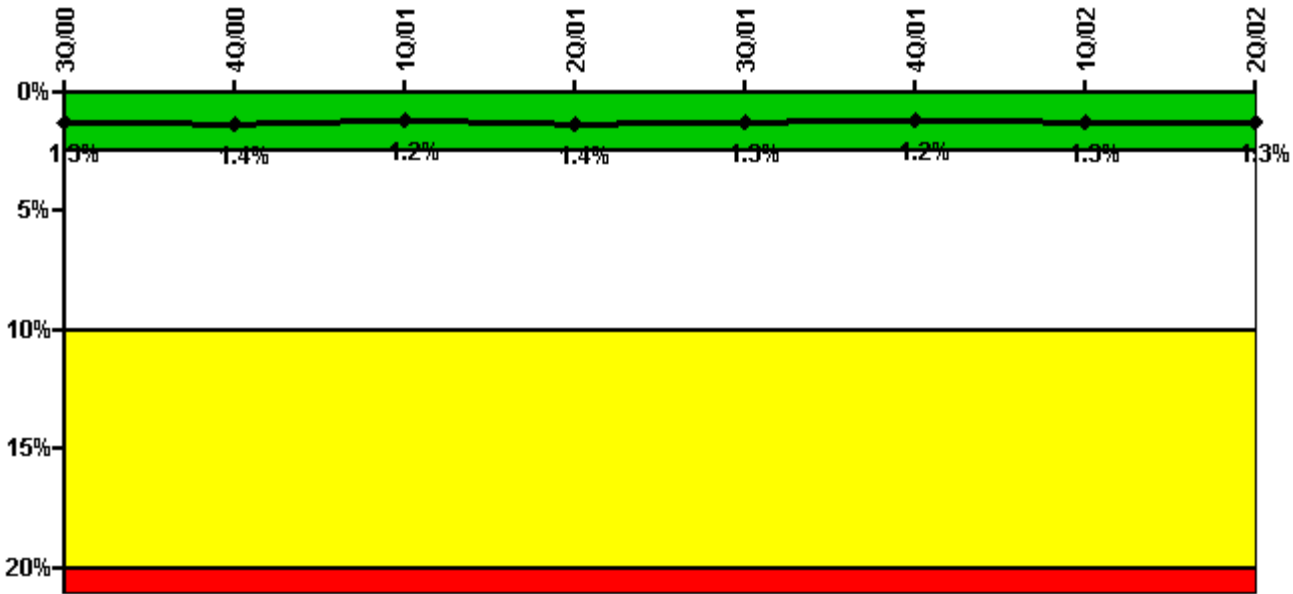
Thresholds: White > 6.0

#### Notes

Unplanned Power Changes per 7000 Critical Hrs	3Q/00	4Q/00	1Q/01	2Q/01	3Q/01	4Q/01	1Q/02	2Q/02
Unplanned power changes	0	0	0	0	1.0	0	3.0	1.0
Critical hours	2208.0	1296.0	2160.0	2183.0	2208.0	2185.0	2054.0	1232.0
Indicator value	0	0	0	0	0.9	0.8	3.2	4.6

Licensee Comments: none

### Safety System Unavailability, Emergency AC Power, >2EDG



Thresholds: White > 2.5% Yellow > 10.0% Red > 20.0%

**Notes**

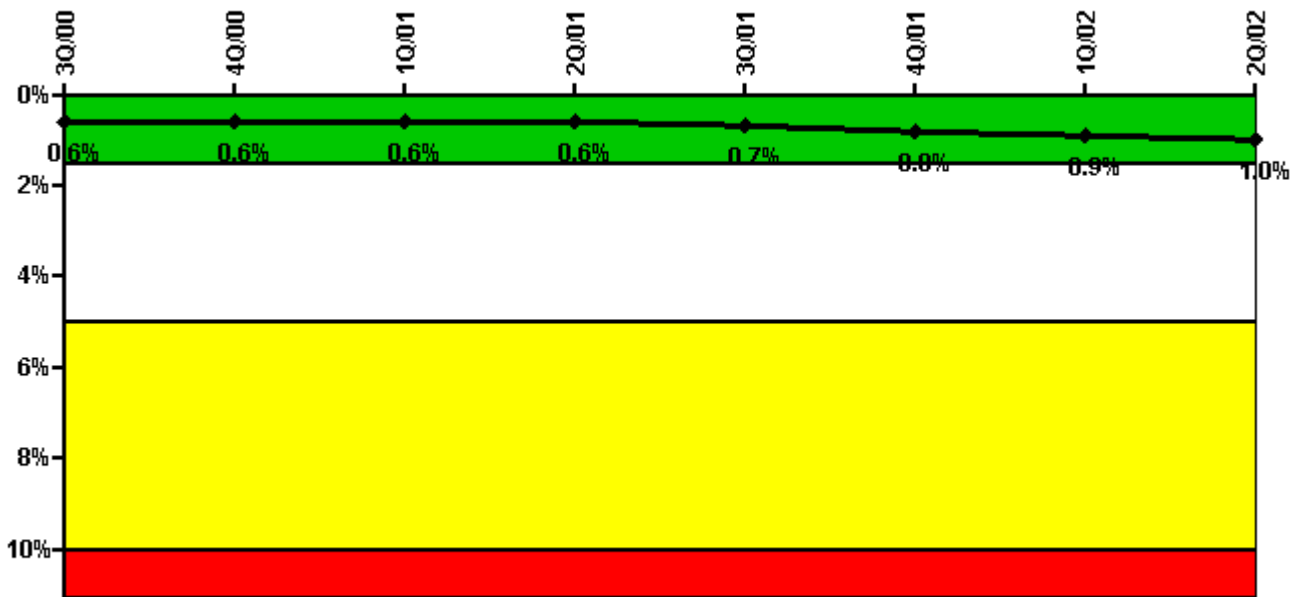
Safety System Unavailability, Emergency AC Power, >2EDG	3Q/00	4Q/00	1Q/01	2Q/01	3Q/01	4Q/01	1Q/02	2Q/02
<b>Train 1</b>								
Planned unavailable hours	6.10	11.30	51.20	6.40	17.70	5.30	54.60	5.30
Unplanned unavailable hours	0	0	0	0	0	0	59.00	0
Fault exposure hours	0	0	0	0	0	0	0	0
Effective Reset hours	0	0	0	0	0	0	0	0
Required hours	2208.00	2209.00	2160.00	2183.00	2208.00	2209.00	2160.00	2183.00
<b>Train 2</b>								
Planned unavailable hours	7.40	13.00	4.80	57.30	27.70	5.00	42.10	3.10
Unplanned unavailable hours	5.90	0	0	13.10	0	0	3.00	0
Fault exposure hours	0	0	0	255.00	0	0	0	0
Effective Reset hours	0	0	0	0	0	0	0	0
Required hours	2208.00	2209.00	2160.00	2183.00	2208.00	2209.00	2160.00	2183.00
<b>Train 3</b>								
Planned unavailable hours	7.00	4.90	43.60	4.20	19.00	5.80	55.70	2.90
Unplanned unavailable hours	0	0	0.20	0	0	0	9.10	0
Fault exposure hours	0	0	0	0	0	0	0.70	0
Effective Reset hours	0	0	0	0	0	0	0	0
Required hours	2208.00	2209.00	2160.00	2183.00	2208.00	2209.00	2160.00	2183.00
<b>Indicator value</b>	<b>1.3%</b>	<b>1.4%</b>	<b>1.2%</b>	<b>1.4%</b>	<b>1.3%</b>	<b>1.2%</b>	<b>1.3%</b>	<b>1.3%</b>

Licensee Comments:

2Q/02: EDG Train 2, 314 hours of T/2 Fault Exposure due to a fuel oil leak on 02/12/02 and EDG Train 1, 16.1

hours of T/2 Fault Exposure in January should have been reported in 1Q 2002.

### Safety System Unavailability, High Pressure Injection System (HPSI)



Thresholds: White > 1.5% Yellow > 5.0% Red > 10.0%

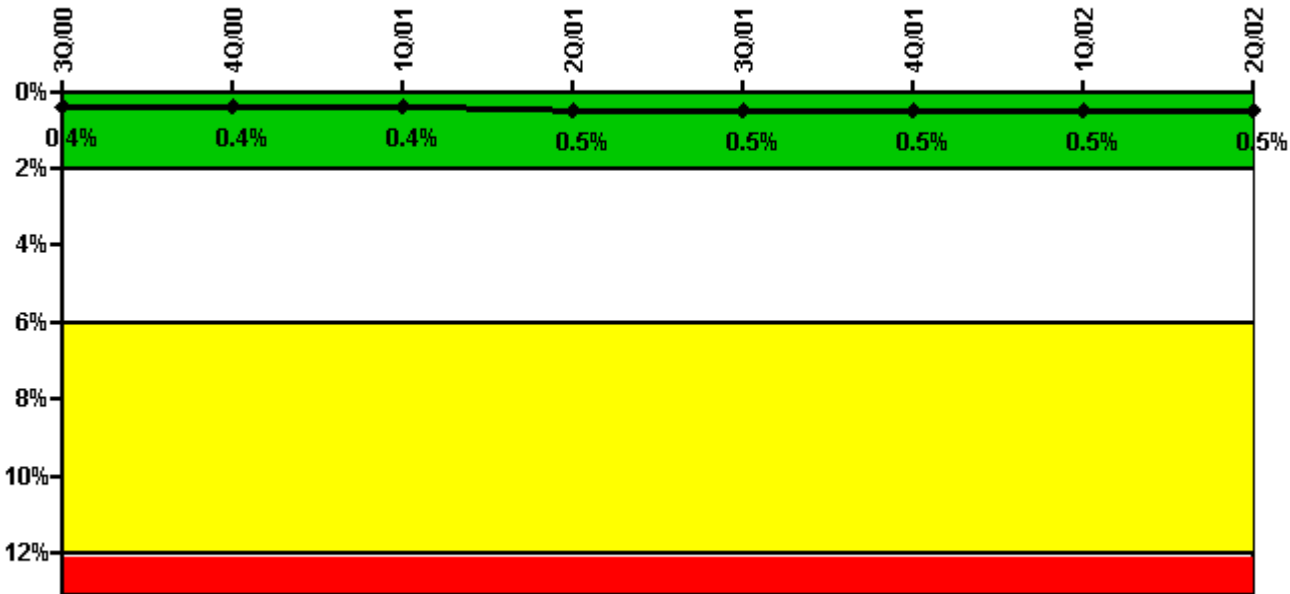
### Notes

Safety System Unavailability, High Pressure Injection System (HPSI)	3Q/00	4Q/00	1Q/01	2Q/01	3Q/01	4Q/01	1Q/02	2Q/02
<b>Train 1</b>								
Planned unavailable hours	0	12.80	48.90	45.80	30.10	44.70	142.00	43.40
Unplanned unavailable hours	0	11.70	13.10	0	6.70	1.00	0	0
Fault exposure hours	0	0	0	0	0	0	0	0
Effective Reset hours	0	0	0	0	0	0	0	0
Required hours	2208.00	1755.00	2160.00	2183.00	2208.00	2185.00	2054.00	1232.00
<b>Train 2</b>								
Planned unavailable hours	7.20	34.80	19.10	21.00	40.60	6.40	18.10	24.30
Unplanned unavailable hours	0	0	0	0	0	7.00	37.50	0
Fault exposure hours	0	0	0	0	0	75.00	0	0
Effective Reset hours	0	0	0	0	0	0	0	0
Required hours	2208.00	1755.00	2160.00	2183.00	2208.00	2185.00	2054.00	1232.00
<b>Train 3</b>								
Planned unavailable hours	12.30	0.20	2.40	0	34.80	20.70	0	17.80
Unplanned unavailable hours	0	0	0	0	0	0	0	0
Fault exposure hours	0	0	0	0	0	0	0	0

Effective Reset hours	0	0	0	0	0	0	0	0
Required hours	2208.00	1755.00	2160.00	2183.00	2208.00	2185.00	2054.00	1232.00
<b>Train 4</b>								
Planned unavailable hours	25.30	0.20	2.40	0	12.10	0	27.30	0
Unplanned unavailable hours	0	0	0	0	0	0	0	0
Fault exposure hours	0	0	0	0	0	0	0	0
Effective Reset hours	0	0	0	0	0	0	0	0
Required hours	2208.00	1755.00	2160.00	2183.00	2208.00	2185.00	2054.00	1232.00
<b>Indicator value</b>	<b>0.6%</b>	<b>0.6%</b>	<b>0.6%</b>	<b>0.6%</b>	<b>0.7%</b>	<b>0.8%</b>	<b>0.9%</b>	<b>1.0%</b>

Licensee Comments: none

### Safety System Unavailability, Heat Removal System (AFW)



Thresholds: White > 2.0% Yellow > 6.0% Red > 12.0%

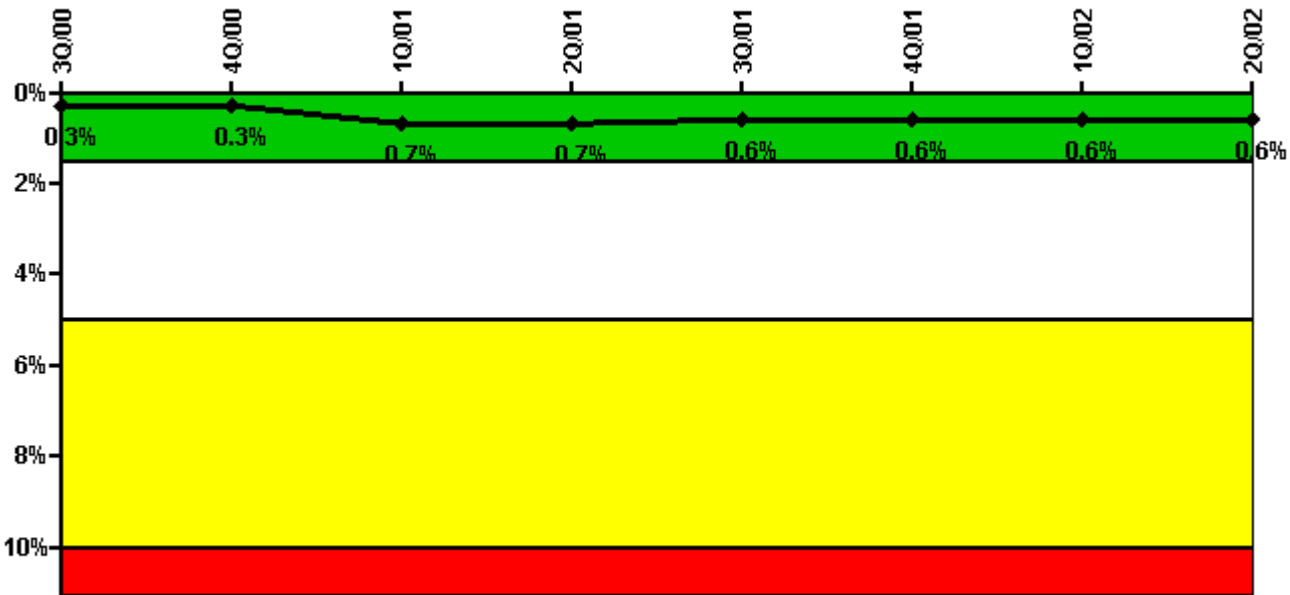
### Notes

Safety System Unavailability, Heat Removal System (AFW)	3Q/00	4Q/00	1Q/01	2Q/01	3Q/01	4Q/01	1Q/02	2Q/02
<b>Train 1</b>								
Planned unavailable hours	23.60	2.10	0.90	3.50	23.90	0.90	6.30	0
Unplanned unavailable hours	0	0	0	0	0	0	0	0
Fault exposure hours	0	0	0	0	0	0	0	0
Effective Reset hours	0	0	0	0	0	0	0	0
Required hours	2208.00	1402.00	2160.00	2183.00	2208.00	2185.00	2054.00	1232.00

<b>Train 2</b>								
Planned unavailable hours	37.20	2.00	2.90	31.30	1.50	3.50	1.50	0.80
Unplanned unavailable hours	0	0	33.80	6.10	0	0	0	0
Fault exposure hours	0	0	0	0	0	0	0	0
Effective Reset hours	0	0	0	0	0	0	0	0
Required hours	2208.00	1402.00	2160.00	2183.00	2208.00	2185.00	2054.00	1232.00
<b>Train 3</b>								
Planned unavailable hours	0.70	1.30	18.80	28.00	0.90	2.90	11.60	0.10
Unplanned unavailable hours	7.30	0	0	0	0	0	0	0
Fault exposure hours	0	0	0	0	0	0	0	0
Effective Reset hours	0	0	0	0	0	0	0	0
Required hours	2208.00	1402.00	2160.00	2183.00	2208.00	2185.00	2054.00	1232.00
<b>Indicator value</b>	<b>0.4%</b>	<b>0.4%</b>	<b>0.4%</b>	<b>0.5%</b>	<b>0.5%</b>	<b>0.5%</b>	<b>0.5%</b>	<b>0.5%</b>

Licensee Comments: none

### Safety System Unavailability, Residual Heat Removal System



Thresholds: White > 1.5% Yellow > 5.0% Red > 10.0%

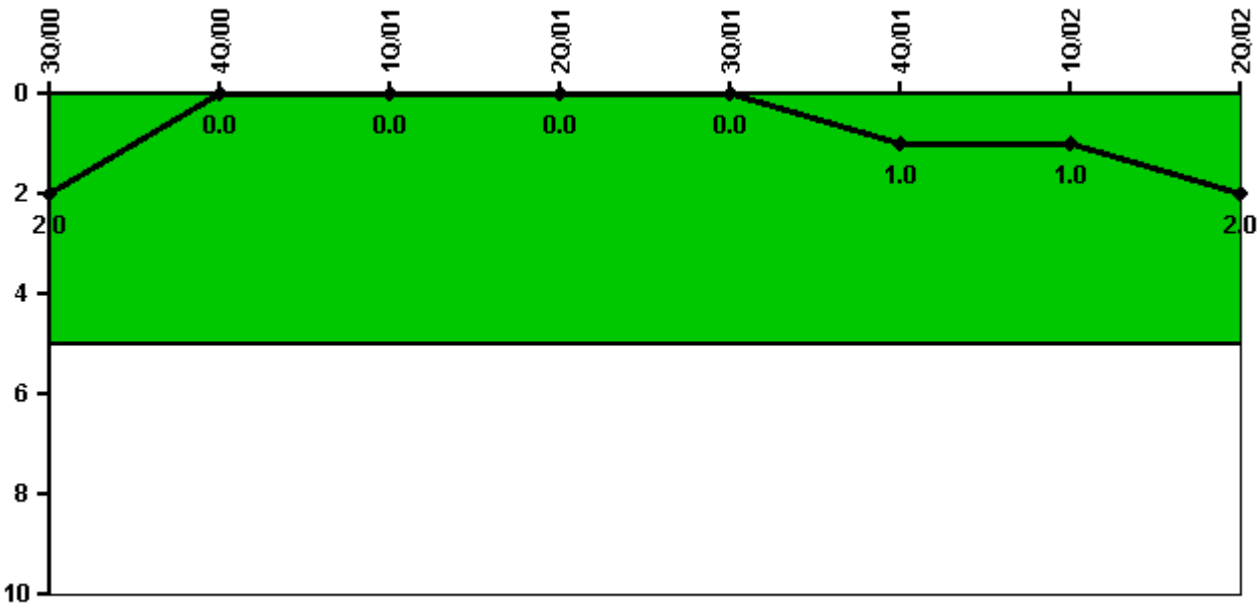
### Notes

<b>Safety System Unavailability, Residual Heat Removal System</b>	<b>3Q/00</b>	<b>4Q/00</b>	<b>1Q/01</b>	<b>2Q/01</b>	<b>3Q/01</b>	<b>4Q/01</b>	<b>1Q/02</b>	<b>2Q/02</b>
Train 1								
Planned unavailable hours	0	0	19.60	0	0.10	0	7.90	19.30

Unplanned unavailable hours	0	0	0	0	0	0	0	0
Fault exposure hours	0	0	0	0	0	0	0	0
Effective Reset hours	0	0	0	0	0	0	0	0
Required hours	2208.00	2209.00	2160.00	2183.00	2208.00	2209.00	2160.00	2183.00
<b>Train 2</b>								
Planned unavailable hours	3.20	0	37.50	0	0.10	0	0	0
Unplanned unavailable hours	0	0	0.10	0	0	0	0	0
Fault exposure hours	0	0	180.10	0	0	0	0	0
Effective Reset hours	0	0	0	0	0	0	0	0
Required hours	2208.00	2209.00	2160.00	2183.00	2208.00	2209.00	2160.00	2183.00
Indicator value	0.3%	0.3%	0.7%	0.7%	0.6%	0.6%	0.6%	0.6%

Licensee Comments: none

### Safety System Functional Failures (PWR)



Thresholds: White > 5.0

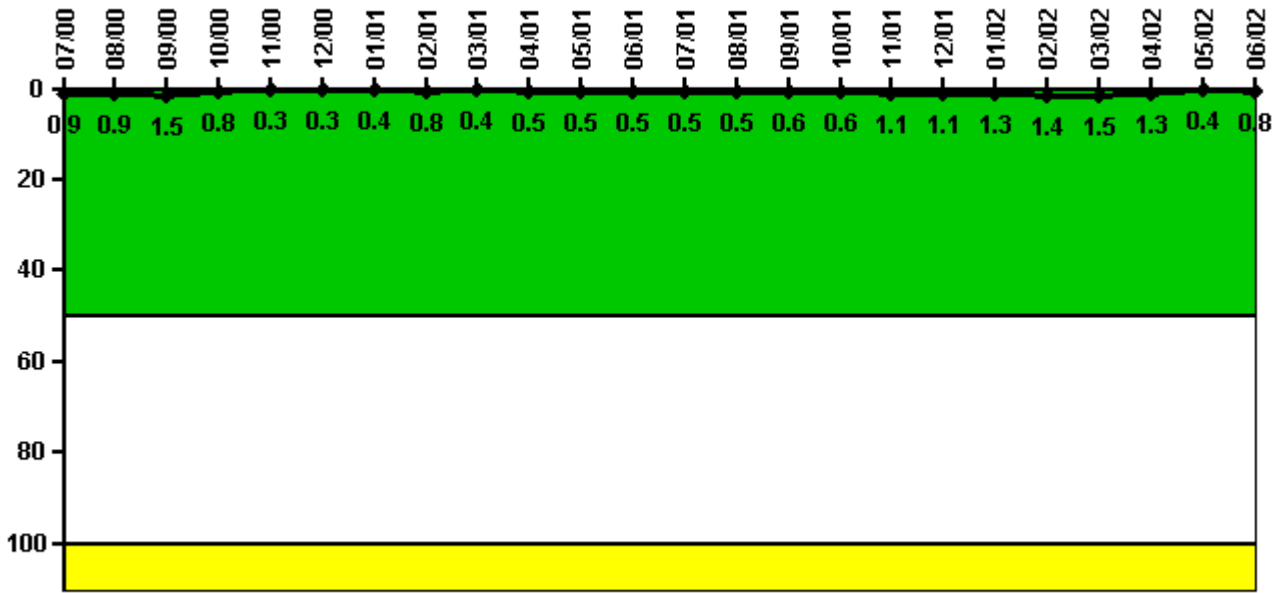
### Notes

Safety System Functional Failures (PWR)	3Q/00	4Q/00	1Q/01	2Q/01	3Q/01	4Q/01	1Q/02	2Q/02
Safety System Functional Failures	0	0	0	0	0	1	0	1
Indicator value	2	0	0	0	0	1	1	2



Licensee Comments: none

### Reactor Coolant System Activity



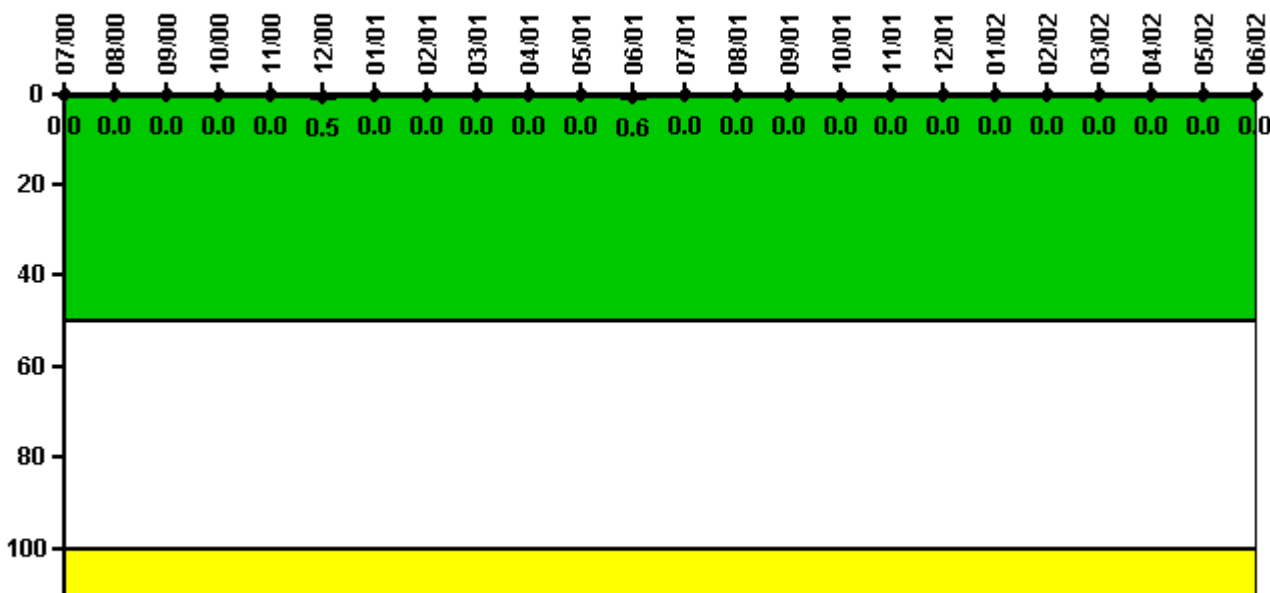
Thresholds: White > 50.0 Yellow > 100.0

### Notes

Reactor Coolant System Activity	7/00	8/00	9/00	10/00	11/00	12/00	1/01	2/01	3/01	4/01	5/01	6/01
Maximum activity	0.008910	0.009330	0.014760	0.008200	0.003180	0.003490	0.003620	0.008410	0.004370	0.004580	0.004510	0.004730
Technical specification limit	1.0	1.0	1.0	1.0	1.0	1.0	1.0	1.0	1.0	1.0	1.0	1.0
Indicator value	0.9	0.9	1.5	0.8	0.3	0.3	0.4	0.8	0.4	0.5	0.5	0.5
Reactor Coolant System Activity	7/01	8/01	9/01	10/01	11/01	12/01	1/02	2/02	3/02	4/02	5/02	6/02
Maximum activity	0.004750	0.005280	0.005920	0.006230	0.010900	0.010900	0.012700	0.013500	0.015000	0.012700	0.003720	0.007540
Technical specification limit	1.0	1.0	1.0	1.0	1.0	1.0	1.0	1.0	1.0	1.0	1.0	1.0
Indicator value	0.5	0.5	0.6	0.6	1.1	1.1	1.3	1.4	1.5	1.3	0.4	0.8

Licensee Comments: none

### Reactor Coolant System Leakage



Thresholds: White > 50.0 Yellow > 100.0

**Notes**

Reactor Coolant System Leakage	7/00	8/00	9/00	10/00	11/00	12/00	1/01	2/01	3/01	4/01	5/01	6/01
Maximum leakage	0	0	0	0	0	0.050	0	0	0	0	0	0.055
Technical specification limit	10.0	10.0	10.0	10.0	10.0	10.0	10.0	10.0	10.0	10.0	10.0	10.0
Indicator value	0	0	0	0	0	0.5	0	0	0	0	0	0.6

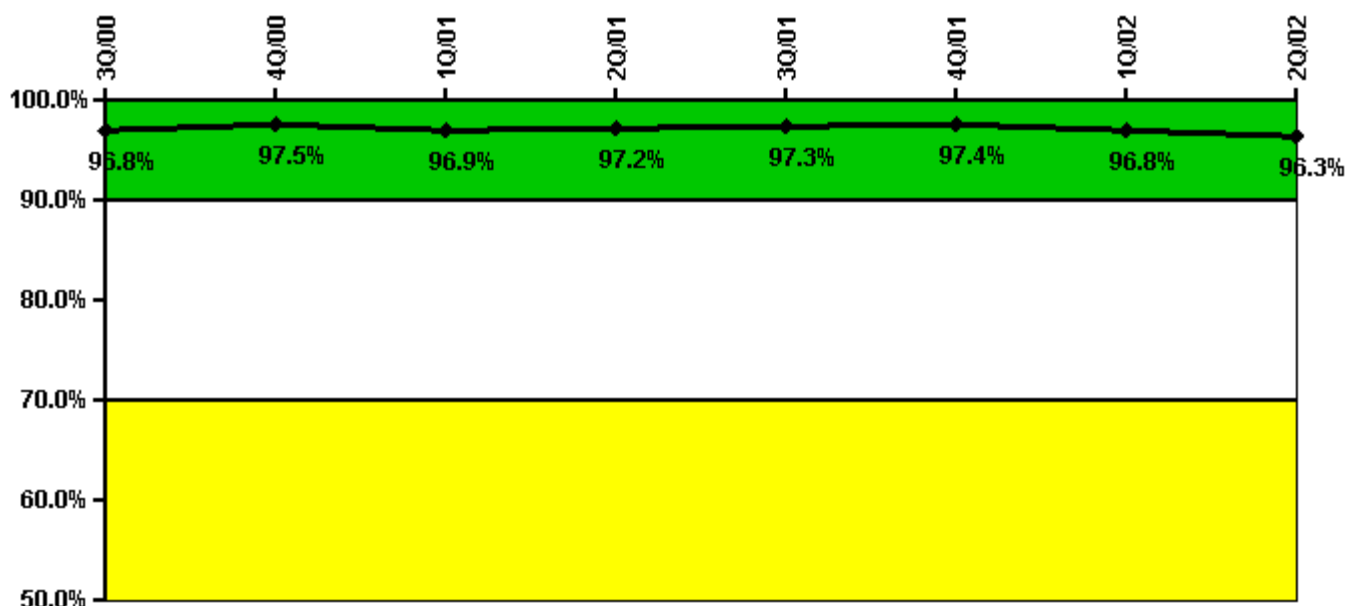
  

Reactor Coolant System Leakage	7/01	8/01	9/01	10/01	11/01	12/01	1/02	2/02	3/02	4/02	5/02	6/02
Maximum leakage	0	0	0	0	0	0	0	0	0	0	0	0
Technical specification limit	10.0	10.0	10.0	10.0	10.0	10.0	10.0	10.0	10.0	10.0	10.0	10.0
Indicator value	0	0	0	0	0	0	0	0	0	0	0	0

Licensee Comments:

6/02: The value for June 2001 was revised from 0 to 0.055. This is a minor change that does not affect the color of the PI.

### Drill/Exercise Performance



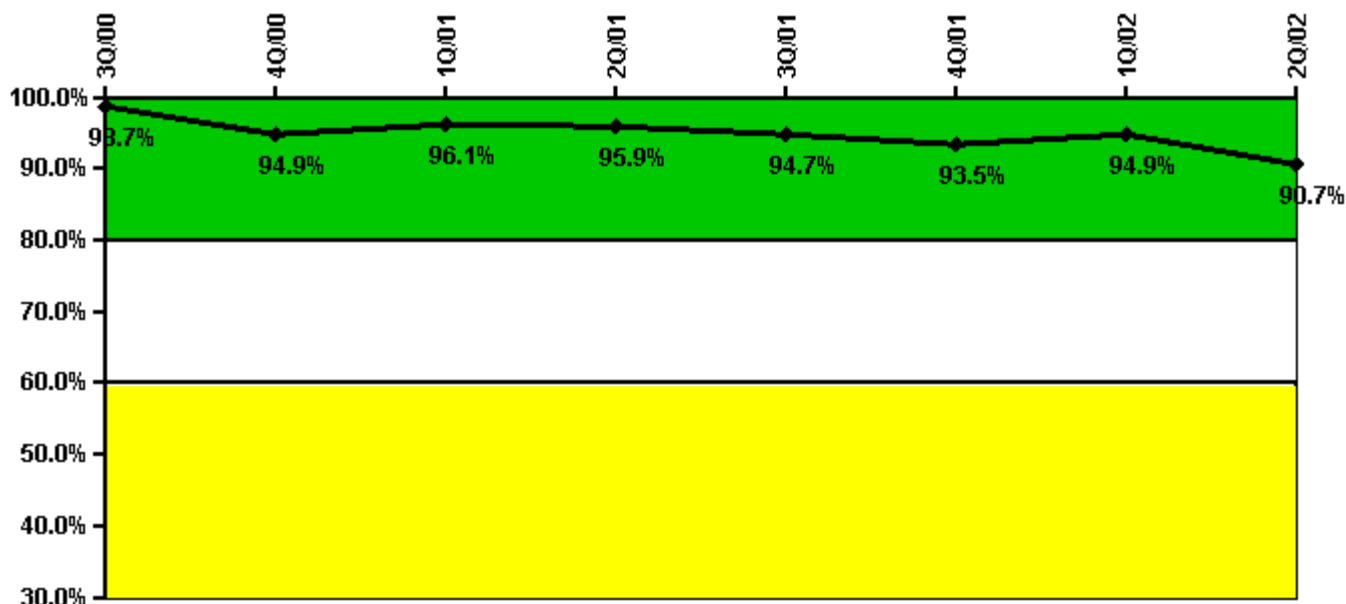
Thresholds: White < 90.0% Yellow < 70.0%

#### Notes

Drill/Exercise Performance	3Q/00	4Q/00	1Q/01	2Q/01	3Q/01	4Q/01	1Q/02	2Q/02
Successful opportunities	50.0	74.0	13.0	10.0	9.0	109.0	39.0	11.0
Total opportunities	50.0	75.0	15.0	10.0	10.0	112.0	43.0	12.0
Indicator value	96.8%	97.5%	96.9%	97.2%	97.3%	97.4%	96.8%	96.3%

Licensee Comments: none

### ERO Drill Participation



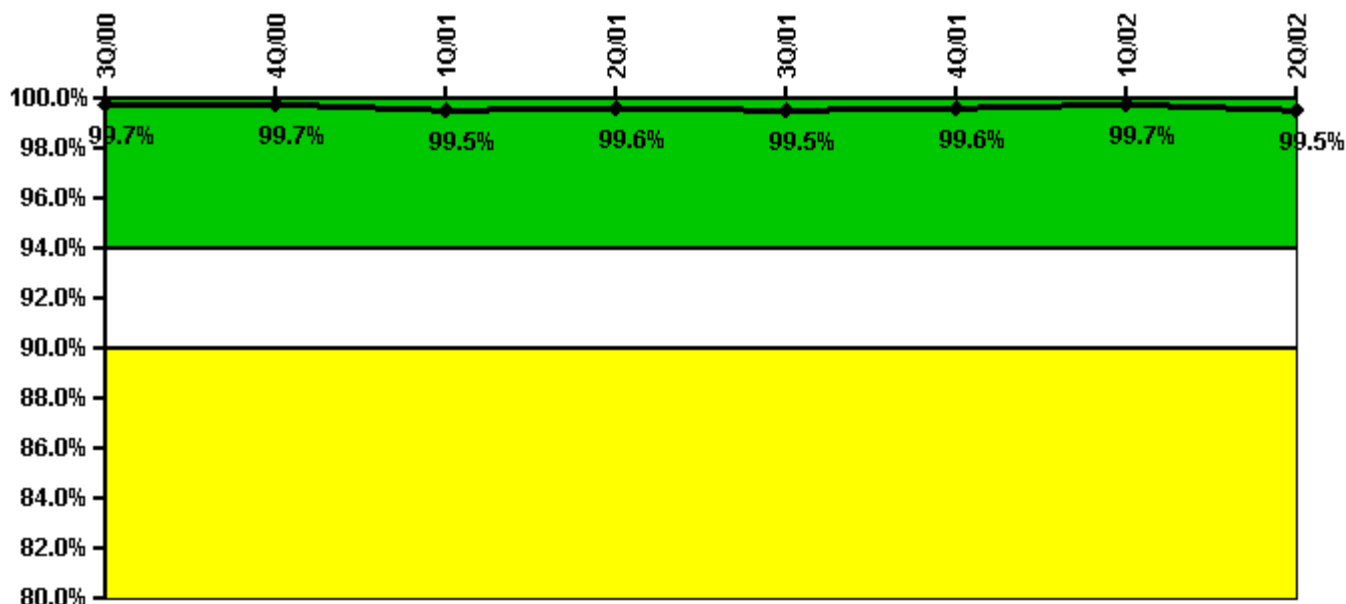
Thresholds: White < 80.0% Yellow < 60.0%

#### Notes

ERO Drill Participation	3Q/00	4Q/00	1Q/01	2Q/01	3Q/01	4Q/01	1Q/02	2Q/02
Participating Key personnel	75.0	74.0	73.0	71.0	71.0	72.0	74.0	68.0
Total Key personnel	76.0	78.0	76.0	74.0	75.0	77.0	78.0	75.0
Indicator value	98.7%	94.9%	96.1%	95.9%	94.7%	93.5%	94.9%	90.7%

Licensee Comments: none

### Alert & Notification System



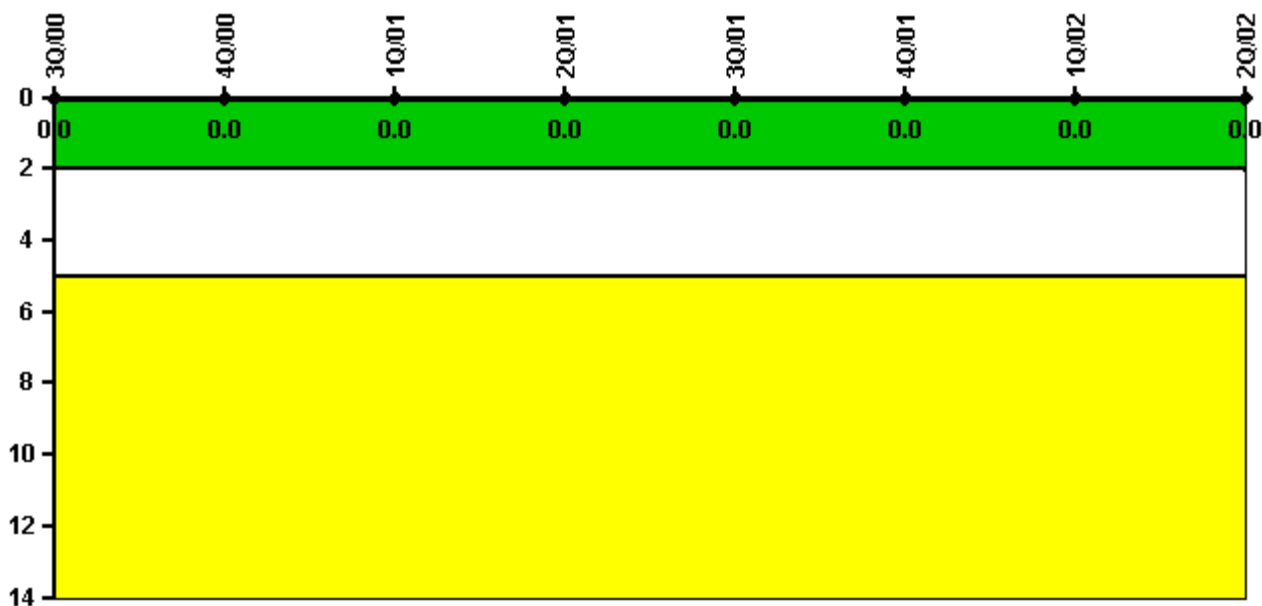
Thresholds: White < 94.0% Yellow < 90.0%

#### Notes

Alert & Notification System	3Q/00	4Q/00	1Q/01	2Q/01	3Q/01	4Q/01	1Q/02	2Q/02
Successful siren-tests	495	496	493	496	494	497	495	493
Total sirens-tests	497	497	497	497	497	497	497	497
Indicator value	99.7%	99.7%	99.5%	99.6%	99.5%	99.6%	99.7%	99.5%

Licensee Comments: none

### Occupational Exposure Control Effectiveness



Thresholds: White > 2.0 Yellow > 5.0

#### Notes

Occupational Exposure Control Effectiveness	3Q/00	4Q/00	1Q/01	2Q/01	3Q/01	4Q/01	1Q/02	2Q/02
High radiation area occurrences	0	0	0	0	0	0	0	0
Very high radiation area occurrences	0	0	0	0	0	0	0	0
Unintended exposure occurrences	0	0	0	0	0	0	0	0
Indicator value	0	0	0	0	0	0	0	0

Licensee Comments: none

### RETS/ODCM Radiological Effluent



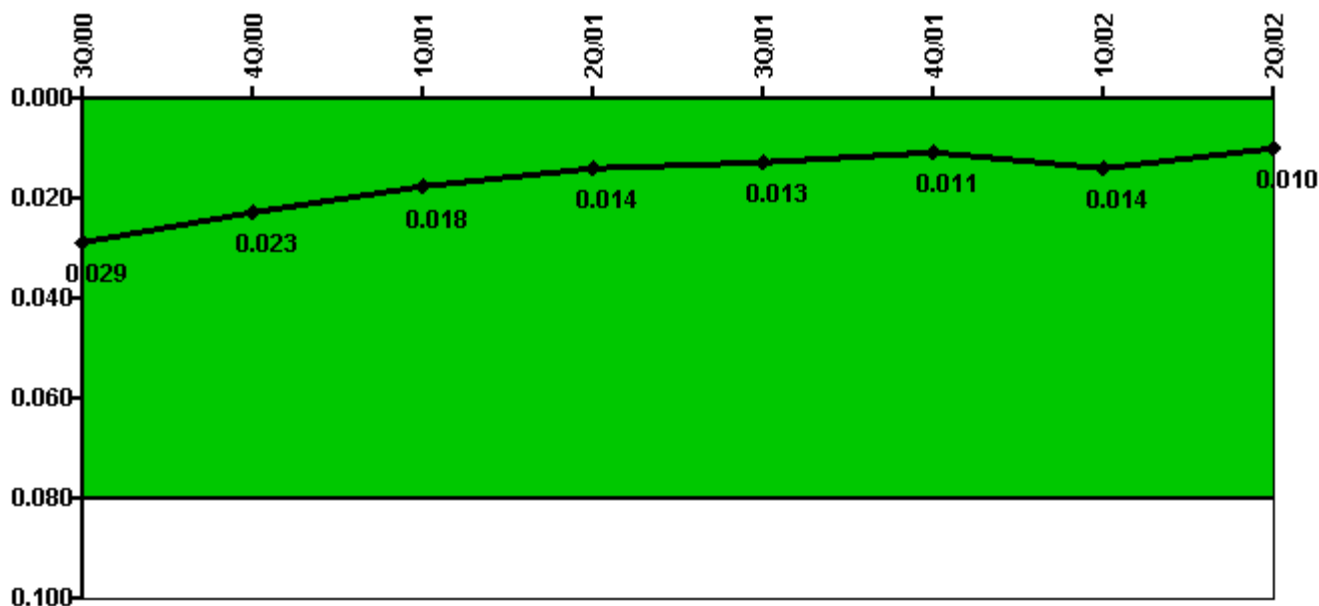
Thresholds: White > 1.0 Yellow > 3.0

#### Notes

RETS/ODCM Radiological Effluent	3Q/00	4Q/00	1Q/01	2Q/01	3Q/01	4Q/01	1Q/02	2Q/02
RETS/ODCM occurrences	0	0	0	0	0	0	0	0
Indicator value	0	0	0	0	0	0	0	0

Licensee Comments: none

### Protected Area Security Performance Index



Thresholds: White > 0.080

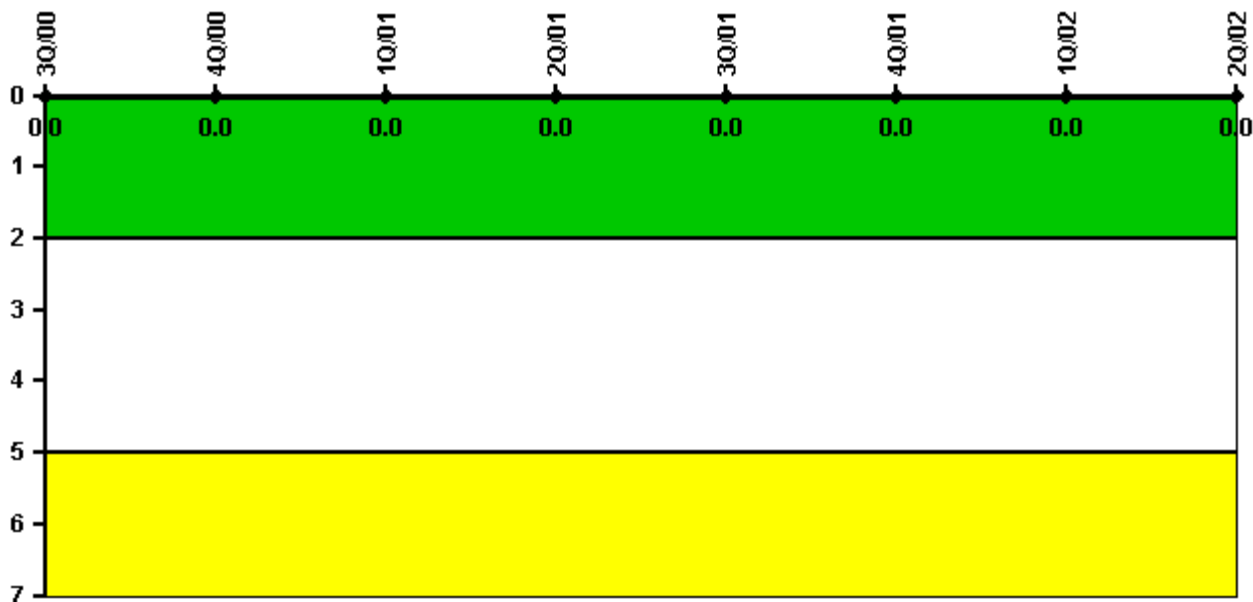
#### Notes

Protected Area Security Performance Index	3Q/00	4Q/00	1Q/01	2Q/01	3Q/01	4Q/01	1Q/02	2Q/02
IDS compensatory hours	142.40	279.40	111.00	407.50	48.60	156.70	282.70	197.80
CCTV compensatory hours	0	0	0	0	0	0	8.8	0
IDS normalization factor	3.80	3.80	3.80	3.80	3.80	3.80	3.80	3.80
CCTV normalization factor	2.8	2.8	2.8	2.8	2.8	2.8	2.8	2.8
Index Value	0.029	0.023	0.018	0.014	0.013	0.011	0.014	0.010

Licensee Comments: none



### Personnel Screening Program



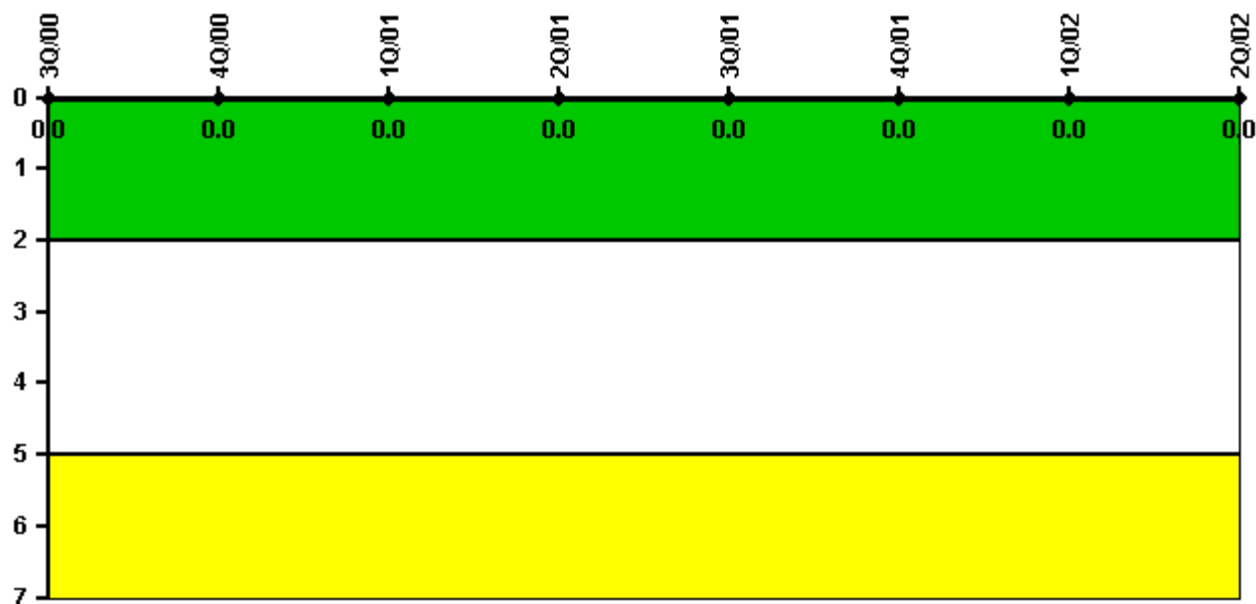
Thresholds: White > 2.0 Yellow > 5.0

#### Notes

Personnel Screening Program	3Q/00	4Q/00	1Q/01	2Q/01	3Q/01	4Q/01	1Q/02	2Q/02
Program failures	0	0	0	0	0	0	0	0
Indicator value	0	0	0	0	0	0	0	0

Licensee Comments: none

### FFD/Personnel Reliability



Thresholds: White > 2.0 Yellow > 5.0

#### Notes

FFD/Personnel Reliability	3Q/00	4Q/00	1Q/01	2Q/01	3Q/01	4Q/01	1Q/02	2Q/02
Program Failures	0	0	0	0	0	0	0	0
Indicator value	0	0	0	0	0	0	0	0

Licensee Comments: none

▲ [PI Summary](#) | [Inspection Findings Summary](#) | [Reactor Oversight Process](#)

Last Modified: July 31, 2002