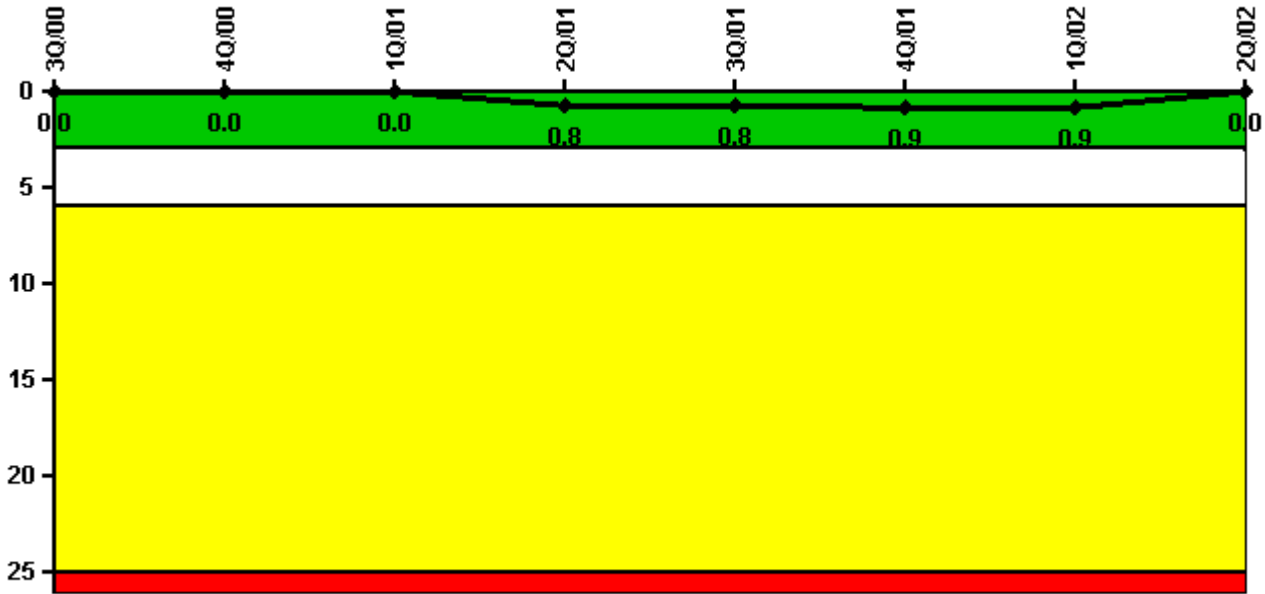


# Palo Verde 3

## 2Q/2002 Performance Indicators

Licensee's General Comments: none

### Unplanned Scrams per 7000 Critical Hrs



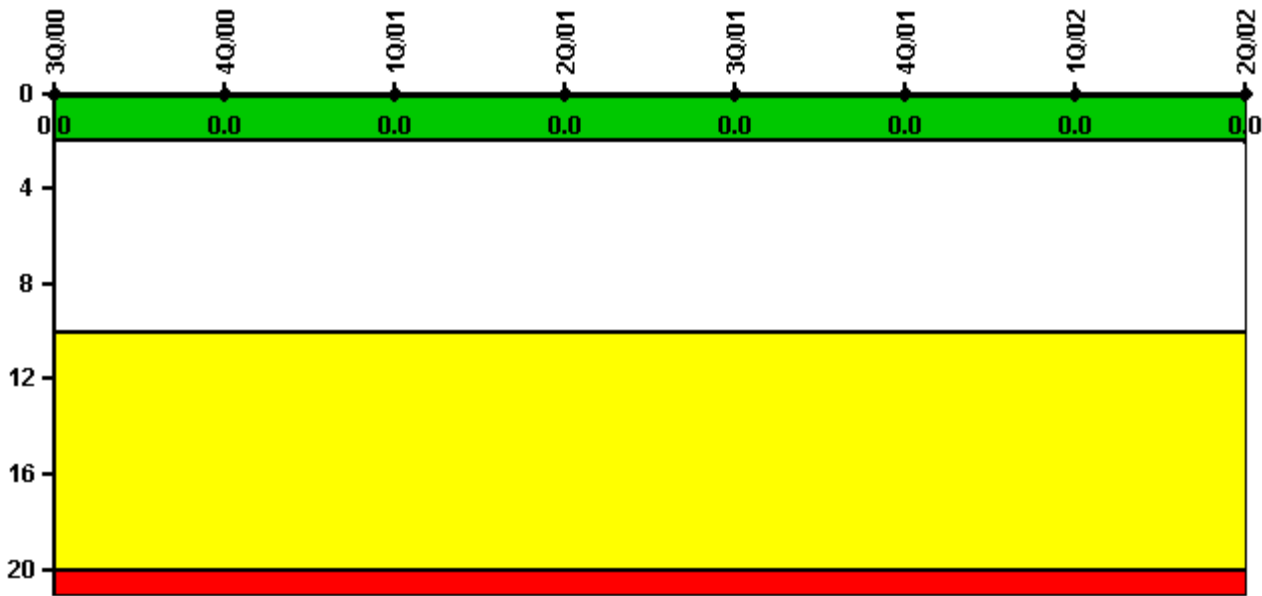
Thresholds: White > 3.0 Yellow > 6.0 Red > 25.0

### Notes

Unplanned Scrams per 7000 Critical Hrs	3Q/00	4Q/00	1Q/01	2Q/01	3Q/01	4Q/01	1Q/02	2Q/02
Unplanned scrams	0	0	0	1.0	0	0	0	0
Critical hours	2131.3	2164.8	1880.5	2133.5	2118.2	1394.4	2160.0	2184.0
Indicator value	0	0	0	0.8	0.8	0.9	0.9	0

Licensee Comments: none

### Scrams with Loss of Normal Heat Removal



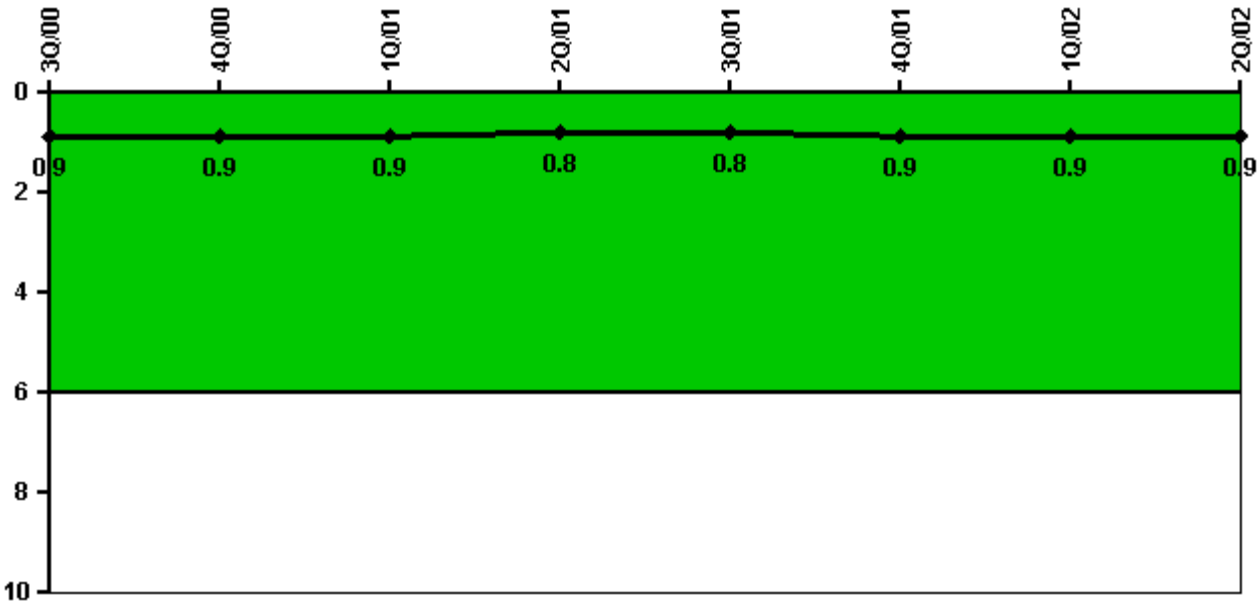
Thresholds: White > 2.0 Yellow > 10.0 Red > 20.0

#### Notes

Scrams with Loss of Normal Heat Removal	3Q/00	4Q/00	1Q/01	2Q/01	3Q/01	4Q/01	1Q/02	2Q/02
Scrams	0	0	0	0	0	0	0	0
Indicator value	0	0	0	0	0	0	0	0

Licensee Comments: none

### Unplanned Power Changes per 7000 Critical Hrs



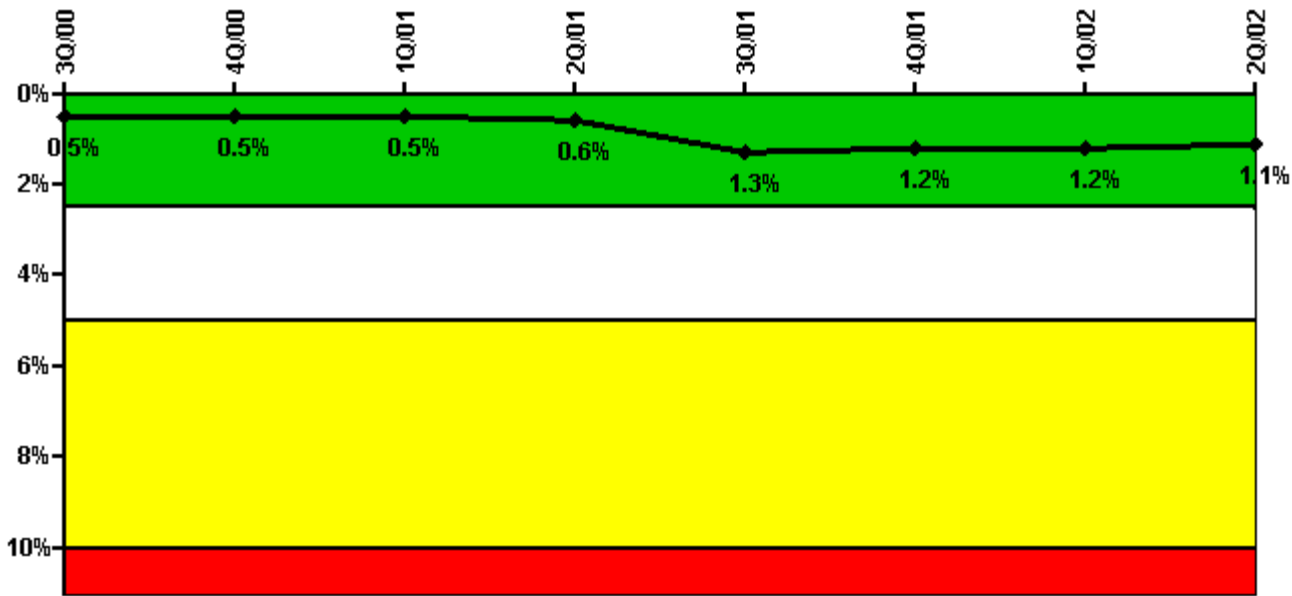
Thresholds: White > 6.0

#### Notes

Unplanned Power Changes per 7000 Critical Hrs	3Q/00	4Q/00	1Q/01	2Q/01	3Q/01	4Q/01	1Q/02	2Q/02
Unplanned power changes	1.0	0	0	0	1.0	0	0	0
Critical hours	2131.3	2164.8	1880.5	2133.5	2118.2	1394.4	2160.0	2184.0
Indicator value	0.9	0.9	0.9	0.8	0.8	0.9	0.9	0.9

Licensee Comments: none

### Safety System Unavailability, Emergency AC Power



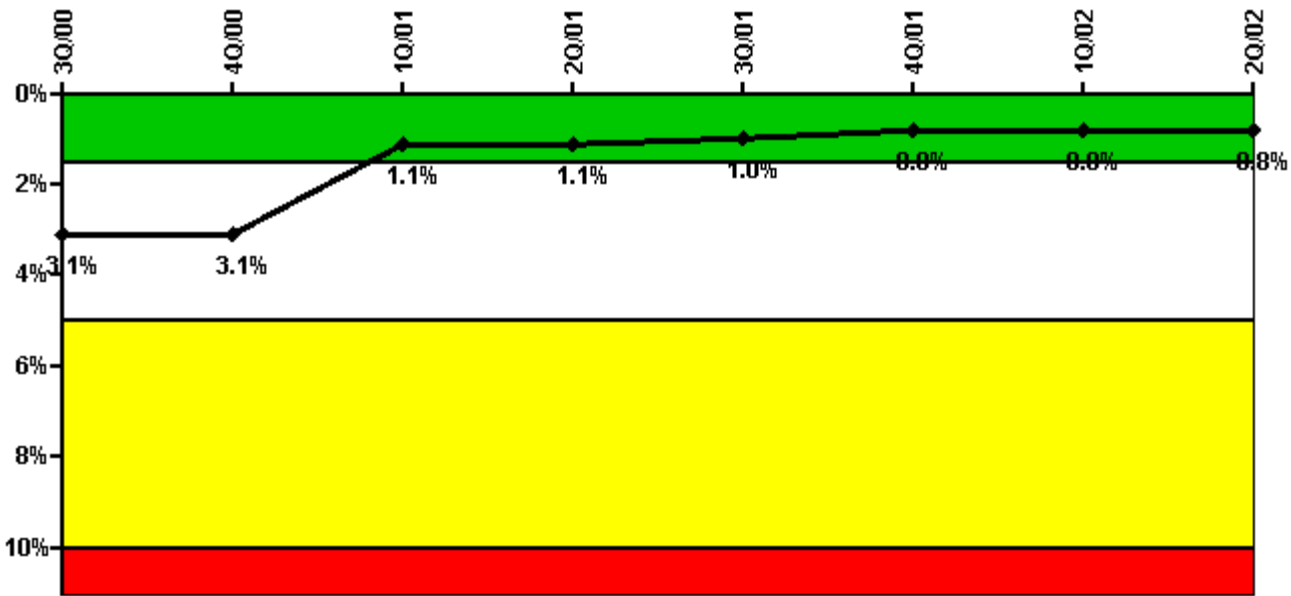
Thresholds: White > 2.5% Yellow > 5.0% Red > 10.0%

**Notes**

Safety System Unavailability, Emergency AC Power	3Q/00	4Q/00	1Q/01	2Q/01	3Q/01	4Q/01	1Q/02	2Q/02
<b>Train 1</b>								
Planned unavailable hours	24.97	0	21.30	0	22.52	0.24	22.29	0.17
Unplanned unavailable hours	0	0	8.88	0	54.97	0	0	0
Fault exposure hours	0	0	0	0	312.10	0	0	0
Effective Reset hours	0	0	0	0	0	0	0	0
Required hours	2208.00	2208.00	2160.00	2184.00	2208.00	2208.00	2160.00	2184.00
<b>Train 2</b>								
Planned unavailable hours	0	0	0	54.20	0.02	0.03	0.06	15.69
Unplanned unavailable hours	0	0	0	0	0	0	0	0
Fault exposure hours	0	0	0	0	0	0	0	0
Effective Reset hours	0	0	0	0	0	0	0	0
Required hours	2208.00	2208.00	2160.00	2184.00	2208.00	2208.00	2160.00	2184.00
Indicator value	0.5%	0.5%	0.5%	0.6%	1.3%	1.2%	1.2%	1.1%

Licensee Comments: none

### Safety System Unavailability, High Pressure Injection System (HPSI)



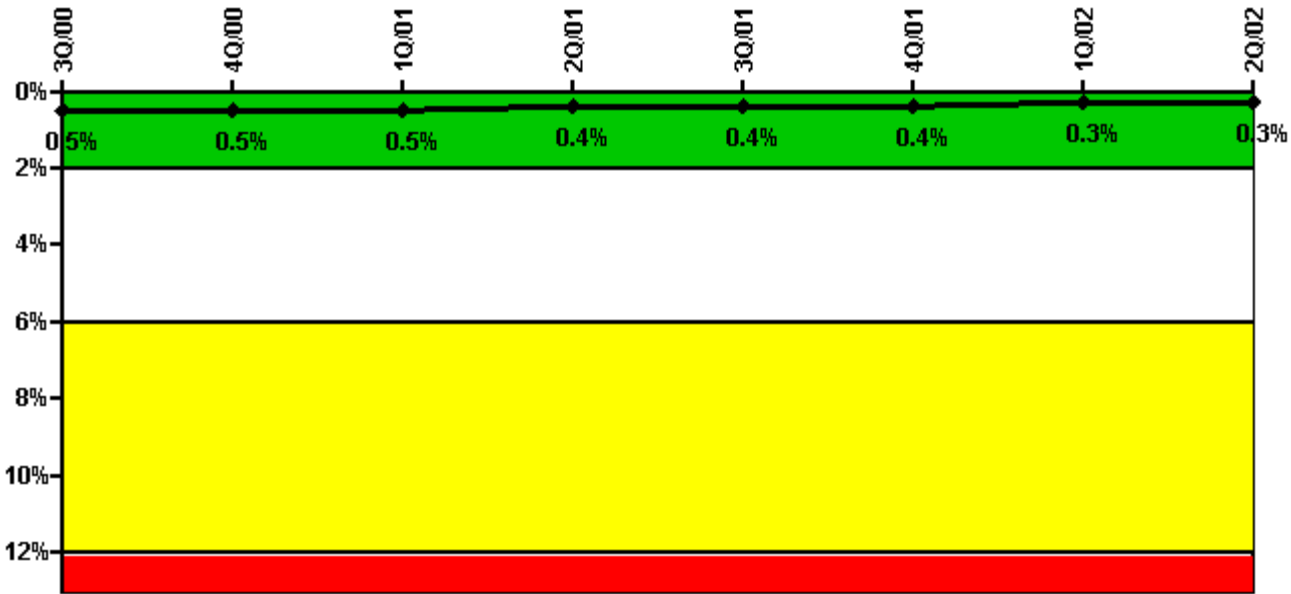
Thresholds: White > 1.5% Yellow > 5.0% Red > 10.0%

Notes

Safety System Unavailability, High Pressure Injection System (HPSI)	3Q/00	4Q/00	1Q/01	2Q/01	3Q/01	4Q/01	1Q/02	2Q/02
<b>Train 1</b>								
Planned unavailable hours	29.71	8.72	20.68	14.36	23.08	1.00	21.25	6.11
Unplanned unavailable hours	0	0	0	0	0	0	0	0
Fault exposure hours	0	0	0	0	0	0	0	0
Effective Reset hours	0	0	0	0	0	0	0	0
Required hours	2131.25	2164.78	1880.50	2133.52	2118.15	1394.42	2160.00	2184.00
<b>Train 2</b>								
Planned unavailable hours	1.14	43.32	2.95	22.37	14.08	9.05	1.74	24.10
Unplanned unavailable hours	0	0	0	0	0	0	0	0
Fault exposure hours	0	0	0	0	0	0	0	0
Effective Reset hours	0	0	984.14	0	0	0	0	0
Required hours	2131.25	2164.78	1880.50	2133.52	2118.15	1394.42	2160.00	2184.00
Indicator value	3.1%	3.1%	1.1%	1.1%	1.0%	0.8%	0.8%	0.8%

Licensee Comments: none

### Safety System Unavailability, Heat Removal System (AFW)



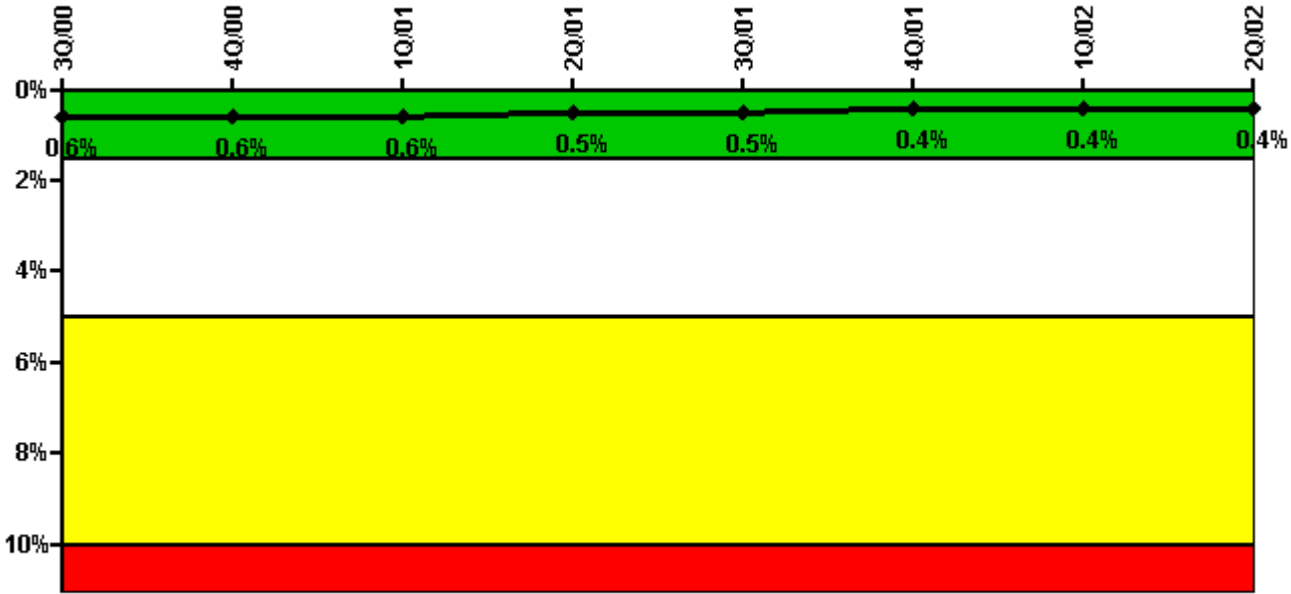
Thresholds: White > 2.0% Yellow > 6.0% Red > 12.0%

**Notes**

Safety System Unavailability, Heat Removal System (AFW)	3Q/00	4Q/00	1Q/01	2Q/01	3Q/01	4Q/01	1Q/02	2Q/02
<b>Train 1</b>								
Planned unavailable hours	15.75	2.08	18.91	4.34	10.25	1.51	11.33	0.89
Unplanned unavailable hours	0	0	13.33	0	14.35	19.92	0	0
Fault exposure hours	0	0	0	0	0	0	0	0
Effective Reset hours	0	0	0	0	0	0	0	0
Required hours	2131.25	2164.78	1880.50	2133.52	2118.15	1394.42	2160.00	2184.00
<b>Train 2</b>								
Planned unavailable hours	0.58	21.73	0.10	12.72	2.80	0.72	0	8.28
Unplanned unavailable hours	0	0	0	0	0	0	0	0
Fault exposure hours	0	0	0	0	0	0	0	0
Effective Reset hours	0	0	0	0	0	0	0	0
Required hours	2131.25	2164.78	1880.50	2133.52	2118.15	1394.42	2160.00	2184.00
<b>Train 3</b>								
Planned unavailable hours	1.05	0.75	0.33	0.62	0.43	0.37	0.40	0.63
Unplanned unavailable hours	0	0	0	0	0	0	0	0
Fault exposure hours	0	0	0	0	0	0	0	0
Effective Reset hours	0	0	0	0	0	0	0	0
Required hours	2131.25	2164.78	1880.50	2133.52	2118.15	1394.42	2160.00	2184.00
<b>Indicator value</b>	<b>0.5%</b>	<b>0.5%</b>	<b>0.5%</b>	<b>0.4%</b>	<b>0.4%</b>	<b>0.4%</b>	<b>0.3%</b>	<b>0.3%</b>

Licensee Comments: none

### Safety System Unavailability, Residual Heat Removal System



Thresholds: White > 1.5% Yellow > 5.0% Red > 10.0%

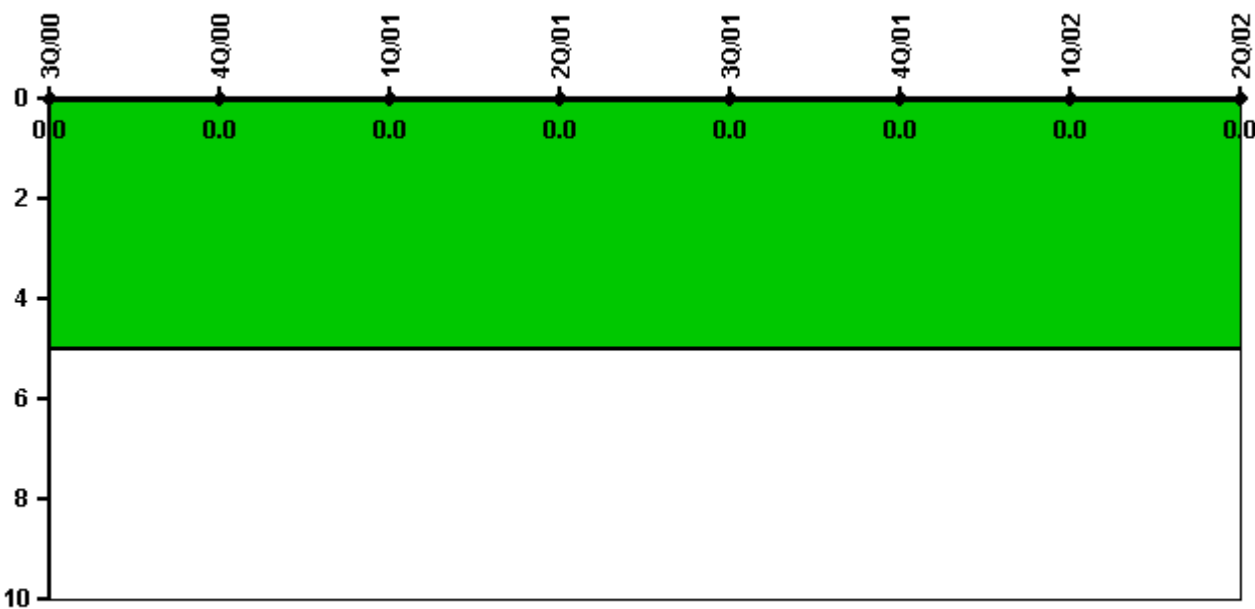
#### Notes

Safety System Unavailability, Residual Heat Removal System	3Q/00	4Q/00	1Q/01	2Q/01	3Q/01	4Q/01	1Q/02	2Q/02
<b>Train 1</b>								
Planned unavailable hours	18.19	5.00	20.75	15.68	17.84	8.72	13.87	3.09
Unplanned unavailable hours	0	0	0	0	0	0	0	0
Fault exposure hours	0	0	0	0	0	0	0	0
Effective Reset hours	0	0	0	0	0	0	0	0
Required hours	2142.10	2204.97	1937.68	2184.00	2181.85	1450.00	2160.00	2184.00
<b>Train 2</b>								
Planned unavailable hours	12.84	39.16	3.97	14.30	19.79	4.25	1.85	15.87
Unplanned unavailable hours	0	0	0	0	0	1.10	0	0
Fault exposure hours	0	0	0	0	0	0	0	0
Effective Reset hours	0	0	0	0	0	0	0	0
Required hours	2142.10	2204.97	1937.68	2184.00	2181.85	1450.00	2160.00	2184.00
<b>Train 3</b>								
Planned unavailable hours	0	0	0	0	0	0	0	0
Unplanned unavailable hours	0	0	0	0	0	0	0	0
Fault exposure hours	0	0	0	0	0	0	0	0
Effective Reset hours	0	0	0	0	0	0	0	0
Required hours	0	0	188.53	0	0.95	342.45	0	0
<b>Train 4</b>								
Planned unavailable hours	0	0	0	0	0	0	0	0

Unplanned unavailable hours	0	0	0	0	0	0	0	0
Fault exposure hours	0	0	0	0	0	0	0	0
Effective Reset hours	0	0	0	0	0	0	0	0
Required hours	65.90	3.03	206.00	0	39.08	352.22	0	0
Indicator value	0.6%	0.6%	0.6%	0.5%	0.5%	0.4%	0.4%	0.4%

Licensee Comments: none

### Safety System Functional Failures (PWR)



Thresholds: White > 5.0

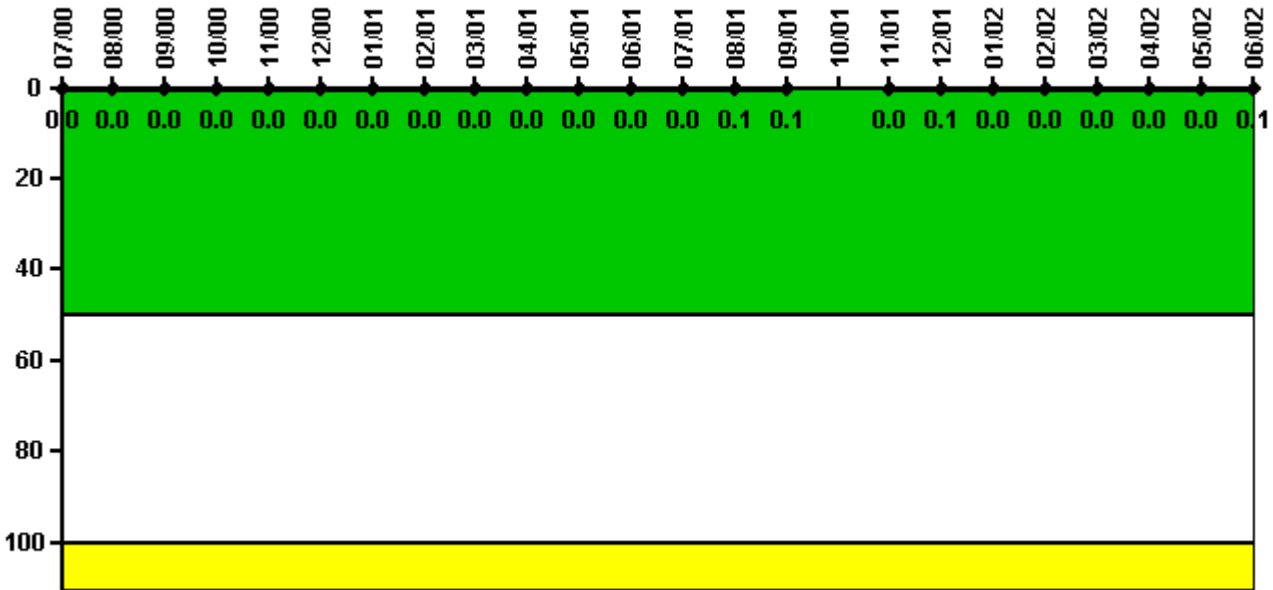
### Notes

Safety System Functional Failures (PWR)	3Q/00	4Q/00	1Q/01	2Q/01	3Q/01	4Q/01	1Q/02	2Q/02
Safety System Functional Failures	0	0	0	0	0	0	0	0
Indicator value	0	0	0	0	0	0	0	0

Licensee Comments: none



### Reactor Coolant System Activity



Thresholds: White > 50.0 Yellow > 100.0

#### Notes

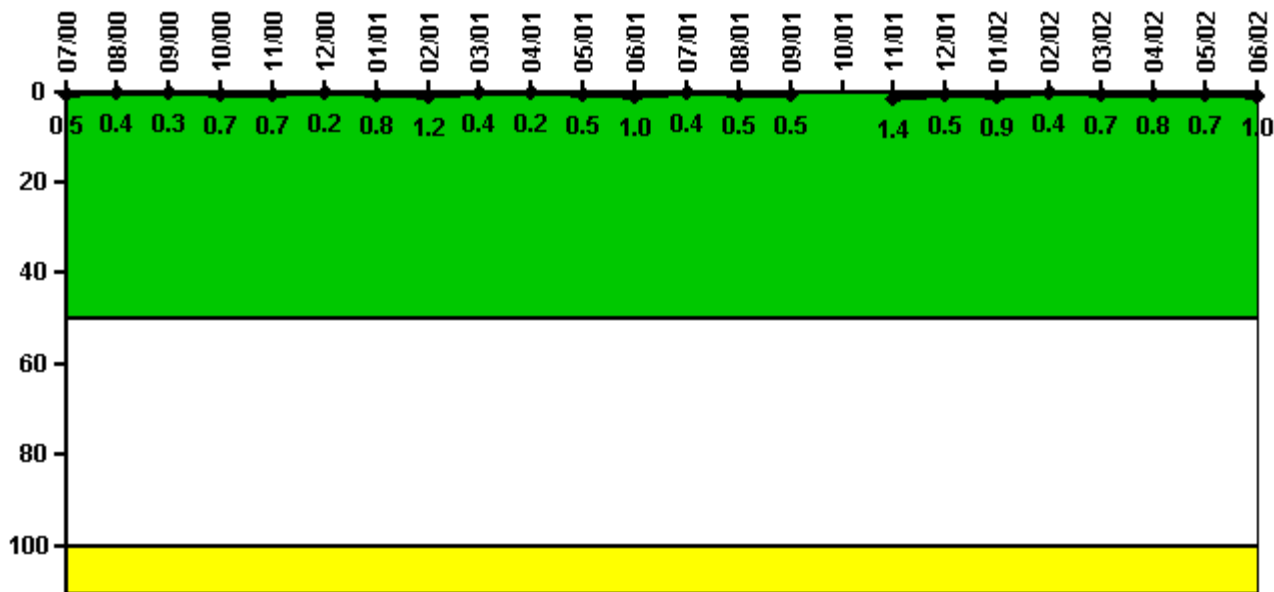
Reactor Coolant System Activity	7/00	8/00	9/00	10/00	11/00	12/00	1/01	2/01	3/01	4/01	5/01	6/01
Maximum activity	0	0	0	0	0	0	0	0	0	0	0	0
Technical specification limit	1.0	1.0	1.0	1.0	1.0	1.0	1.0	1.0	1.0	1.0	1.0	1.0
Indicator value	0	0	0	0	0	0	0	0	0	0	0	0

Reactor Coolant System Activity	7/01	8/01	9/01	10/01	11/01	12/01	1/02	2/02	3/02	4/02	5/02	6/02
Maximum activity	0	0.001000	0.001000	N/A	0	0.001000	0	0	0	0	0	0.001000
Technical specification limit	1.0	1.0	1.0	N/A	1.0	1.0	1.0	1.0	1.0	1.0	1.0	1.0
Indicator value	0	0.1	0.1	N/A	0	0.1	0	0	0	0	0	0.1

Licensee Comments: none

### Reactor Coolant System Leakage



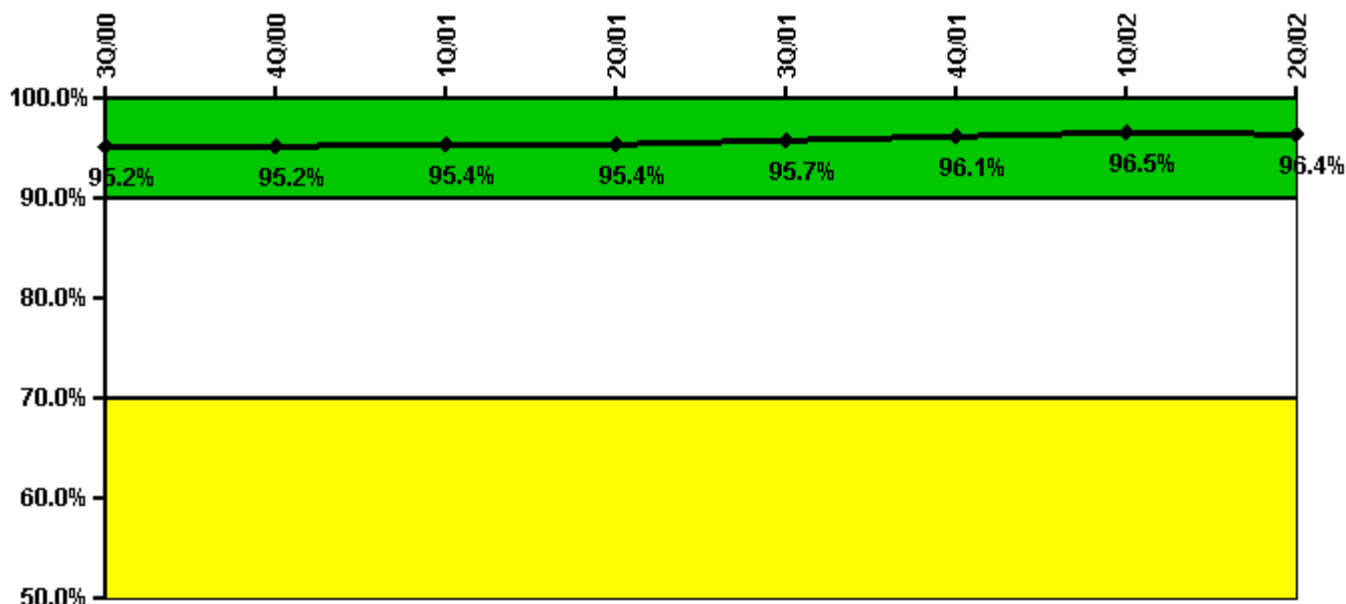
Thresholds: White > 50.0 Yellow > 100.0

**Notes**

Reactor Coolant System Leakage	7/00	8/00	9/00	10/00	11/00	12/00	1/01	2/01	3/01	4/01	5/01	6/01
Maximum leakage	0.047	0.035	0.034	0.065	0.074	0.022	0.081	0.116	0.043	0.022	0.049	0.097
Technical specification limit	10.0	10.0	10.0	10.0	10.0	10.0	10.0	10.0	10.0	10.0	10.0	10.0
Indicator value	0.5	0.4	0.3	0.7	0.7	0.2	0.8	1.2	0.4	0.2	0.5	1.0
Reactor Coolant System Leakage	7/01	8/01	9/01	10/01	11/01	12/01	1/02	2/02	3/02	4/02	5/02	6/02
Maximum leakage	0.037	0.052	0.054	N/A	0.136	0.047	0.085	0.038	0.069	0.080	0.070	0.098
Technical specification limit	10.0	10.0	10.0	N/A	10.0	10.0	10.0	10.0	10.0	10.0	10.0	10.0
Indicator value	0.4	0.5	0.5	N/A	1.4	0.5	0.9	0.4	0.7	0.8	0.7	1.0

Licensee Comments: none

### Drill/Exercise Performance



Thresholds: White < 90.0% Yellow < 70.0%

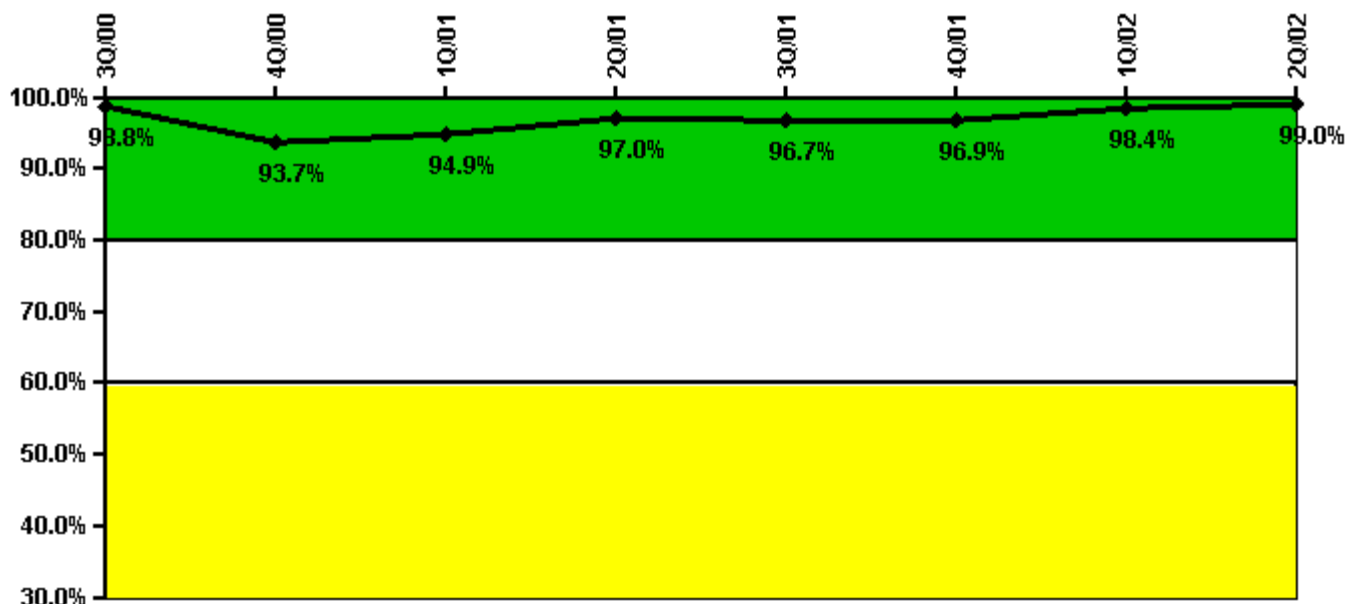
#### Notes

Drill/Exercise Performance	3Q/00	4Q/00	1Q/01	2Q/01	3Q/01	4Q/01	1Q/02	2Q/02
Successful opportunities	95.0	0	20.0	0	9.0	198.0	19.0	8.0
Total opportunities	100.0	0	20.0	0	9.0	205.0	20.0	8.0
Indicator value	95.2%	95.2%	95.4%	95.4%	95.7%	96.1%	96.5%	96.4%

Licensee Comments:

2Q/02: Data previously submitted in 4th quarter of 2001 has been changed. 118 Communicators were counted in the Drill Participation PI data but were inadvertently not included as contributing to the Drill Performance statistics. The change did not affect the "color" of the indicator.

### ERO Drill Participation



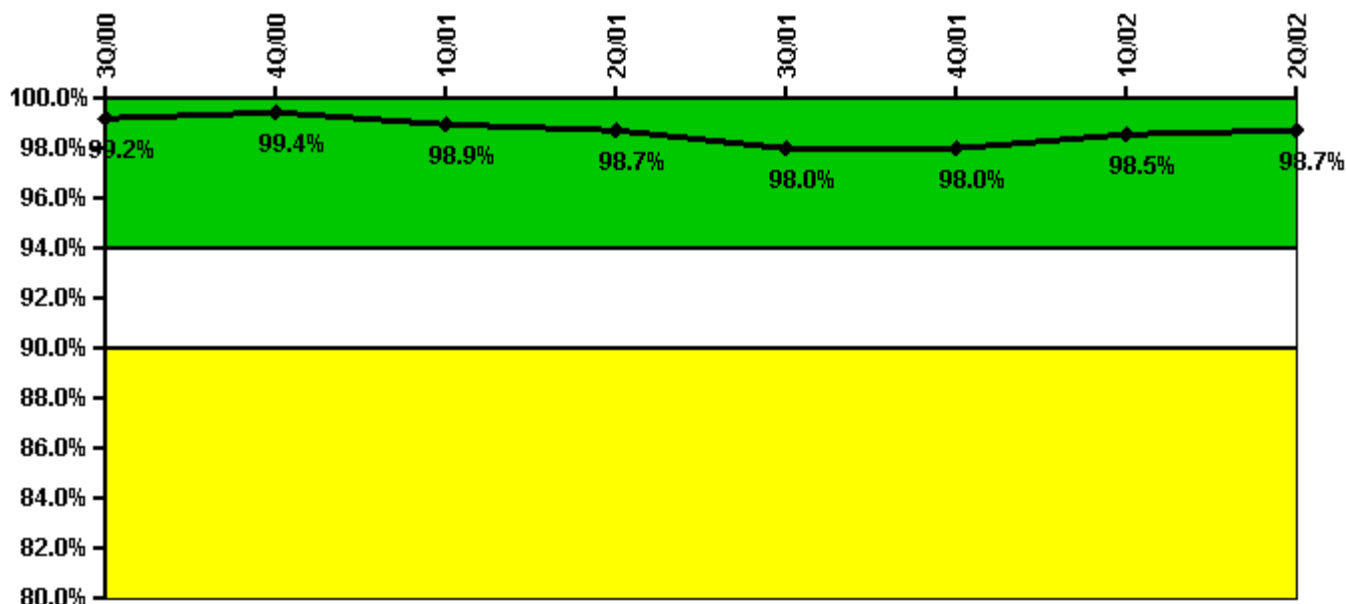
Thresholds: White < 80.0% Yellow < 60.0%

#### Notes

ERO Drill Participation	3Q/00	4Q/00	1Q/01	2Q/01	3Q/01	4Q/01	1Q/02	2Q/02
Participating Key personnel	165.0	163.0	166.0	160.0	176.0	188.0	188.0	191.0
Total Key personnel	167.0	174.0	175.0	165.0	182.0	194.0	191.0	193.0
Indicator value	98.8%	93.7%	94.9%	97.0%	96.7%	96.9%	98.4%	99.0%

Licensee Comments: none

### Alert & Notification System



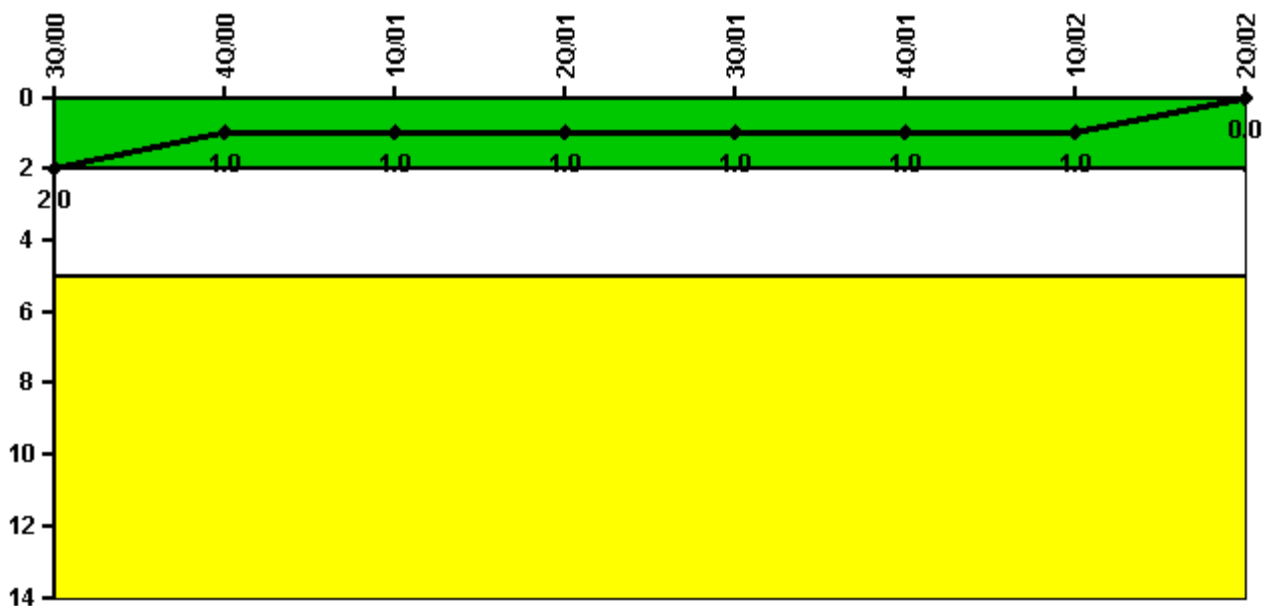
Thresholds: White < 94.0% Yellow < 90.0%

#### Notes

Alert & Notification System	3Q/00	4Q/00	1Q/01	2Q/01	3Q/01	4Q/01	1Q/02	2Q/02
Successful siren-tests	347	467	382	382	375	466	390	383
Total sirens-tests	351	468	390	390	390	468	390	387
Indicator value	99.2%	99.4%	98.9%	98.7%	98.0%	98.0%	98.5%	98.7%

Licensee Comments: none

### Occupational Exposure Control Effectiveness



Thresholds: White > 2.0 Yellow > 5.0

#### Notes

Occupational Exposure Control Effectiveness	3Q/00	4Q/00	1Q/01	2Q/01	3Q/01	4Q/01	1Q/02	2Q/02
High radiation area occurrences	0	0	0	1	0	0	0	0
Very high radiation area occurrences	0	0	0	0	0	0	0	0
Unintended exposure occurrences	0	0	0	0	0	0	0	0
Indicator value	2	1	1	1	1	1	1	0

Licensee Comments: none

### RETS/ODCM Radiological Effluent



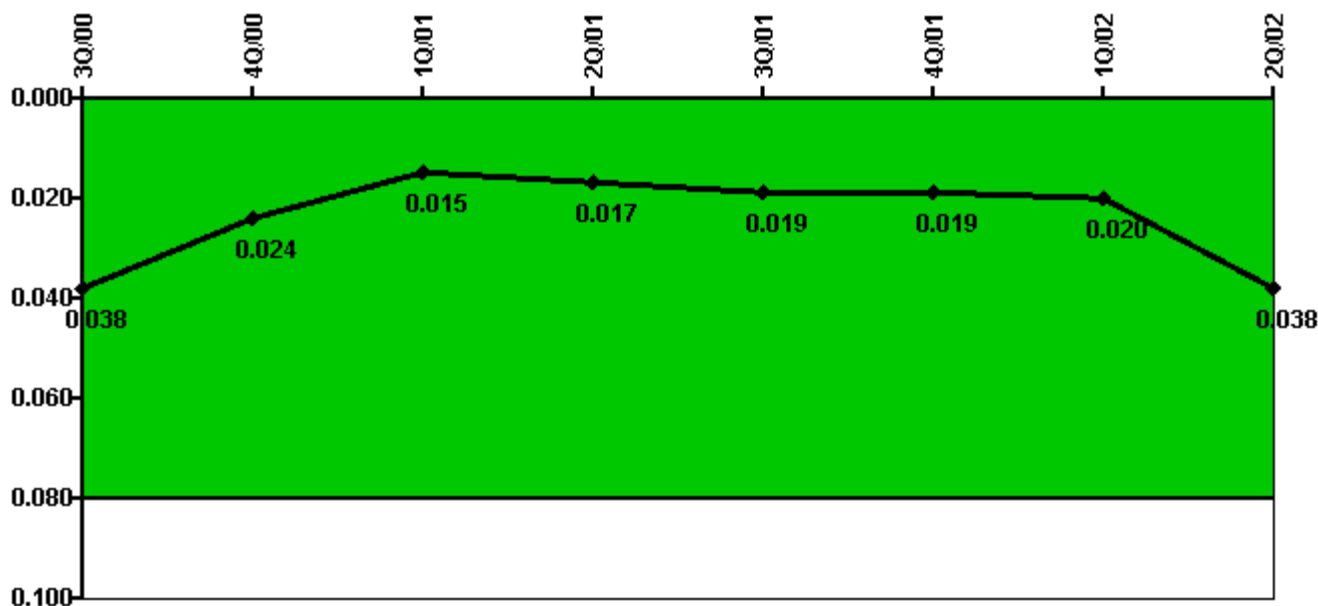
Thresholds: White > 1.0 Yellow > 3.0

#### Notes

RETS/ODCM Radiological Effluent	3Q/00	4Q/00	1Q/01	2Q/01	3Q/01	4Q/01	1Q/02	2Q/02
RETS/ODCM occurrences	0	0	0	0	0	0	0	0
Indicator value	0	0	0	0	0	0	0	0

Licensee Comments: none

### Protected Area Security Performance Index



Thresholds: White > 0.080

#### Notes

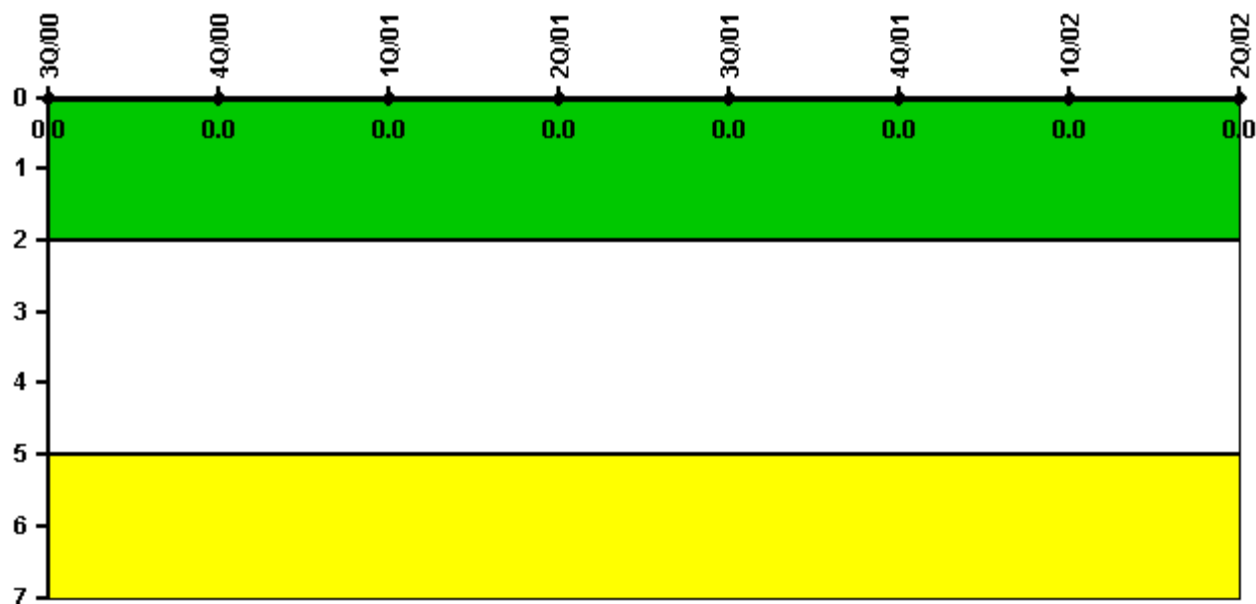
Protected Area Security Performance Index	3Q/00	4Q/00	1Q/01	2Q/01	3Q/01	4Q/01	1Q/02	2Q/02
IDS compensatory hours	85.60	95.20	71.50	109.90	71.00	65.30	87.00	804.00
CCTV compensatory hours	8.5	1.3	19.8	82.6	69.5	14.6	39.4	0
IDS normalization factor	1.85	1.85	1.85	1.85	1.85	1.85	1.85	1.85
CCTV normalization factor	1.2	1.2	1.2	1.2	1.2	1.2	1.2	1.2
Index Value	0.038	0.024	0.015	0.017	0.019	0.019	0.020	0.038

Licensee Comments:

2Q/02: A design problem was identified with the IDS requiring compensatory measures in May 2002. An engineering modification was approved and issued to correct the problem. Based on the approved engineering modification no IDS compensatory hours associated with the modification were counted in June.



### Personnel Screening Program



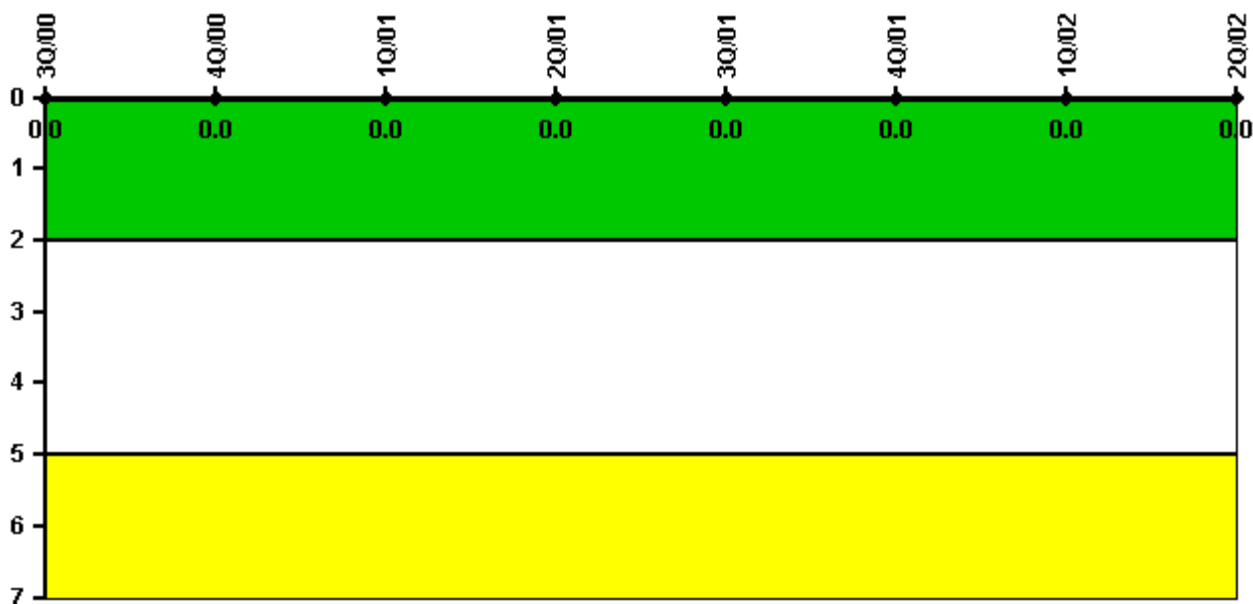
Thresholds: White > 2.0 Yellow > 5.0

#### Notes

Personnel Screening Program	3Q/00	4Q/00	1Q/01	2Q/01	3Q/01	4Q/01	1Q/02	2Q/02
Program failures	0	0	0	0	0	0	0	0
Indicator value	0	0	0	0	0	0	0	0

Licensee Comments: none

### FFD/Personnel Reliability



Thresholds: White > 2.0 Yellow > 5.0

#### Notes

FFD/Personnel Reliability	3Q/00	4Q/00	1Q/01	2Q/01	3Q/01	4Q/01	1Q/02	2Q/02
Program Failures	0	0	0	0	0	0	0	0
Indicator value	0	0	0	0	0	0	0	0

Licensee Comments: none

▲ [PI Summary](#) | [Inspection Findings Summary](#) | [Reactor Oversight Process](#)

Last Modified: July 31, 2002