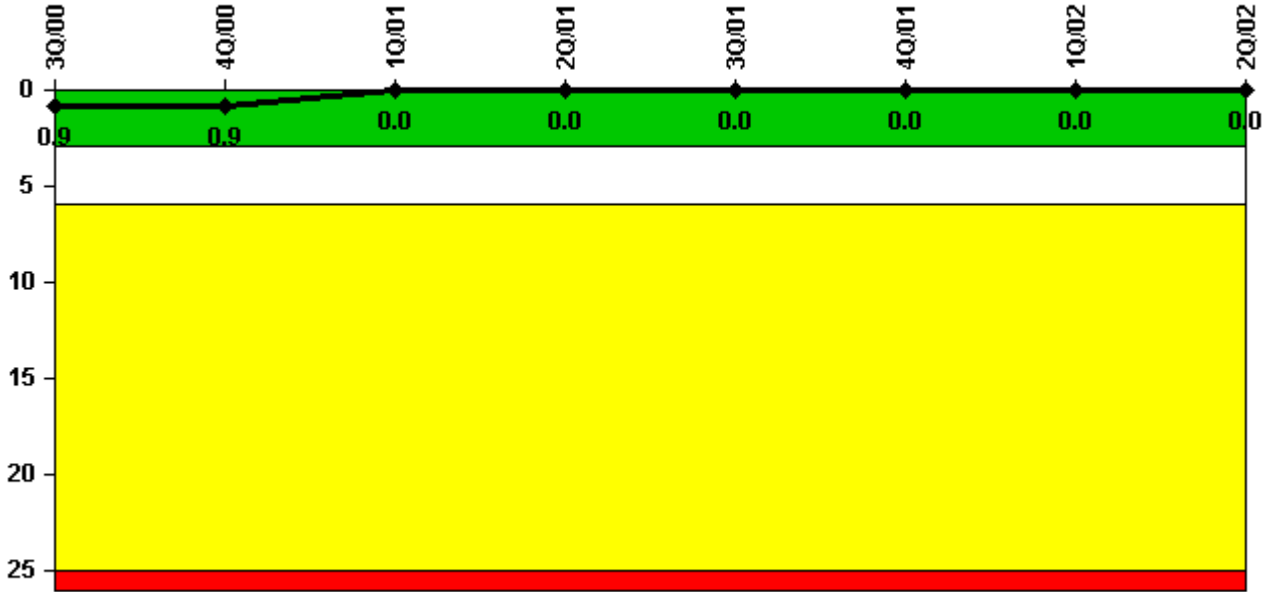


# Ocone3

## 2Q/2002 Performance Indicators

Licensee's General Comments: none

### Unplanned Scrams per 7000 Critical Hrs



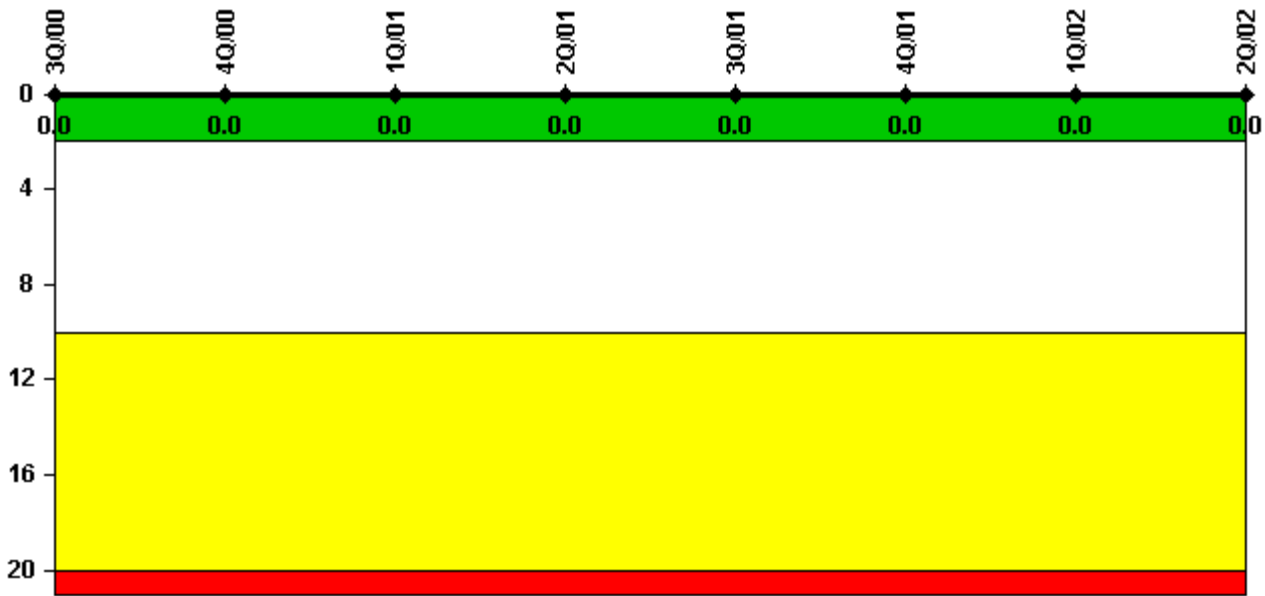
Thresholds: White > 3.0 Yellow > 6.0 Red > 25.0

### Notes

Unplanned Scrams per 7000 Critical Hrs	3Q/00	4Q/00	1Q/01	2Q/01	3Q/01	4Q/01	1Q/02	2Q/02
Unplanned scrams	0	0	0	0	0	0	0	0
Critical hours	2208.0	2209.0	1129.7	1653.8	2208.0	1419.6	2160.0	2183.0
Indicator value	0.9	0.9	0	0	0	0	0	0

Licensee Comments: none

### Scrams with Loss of Normal Heat Removal



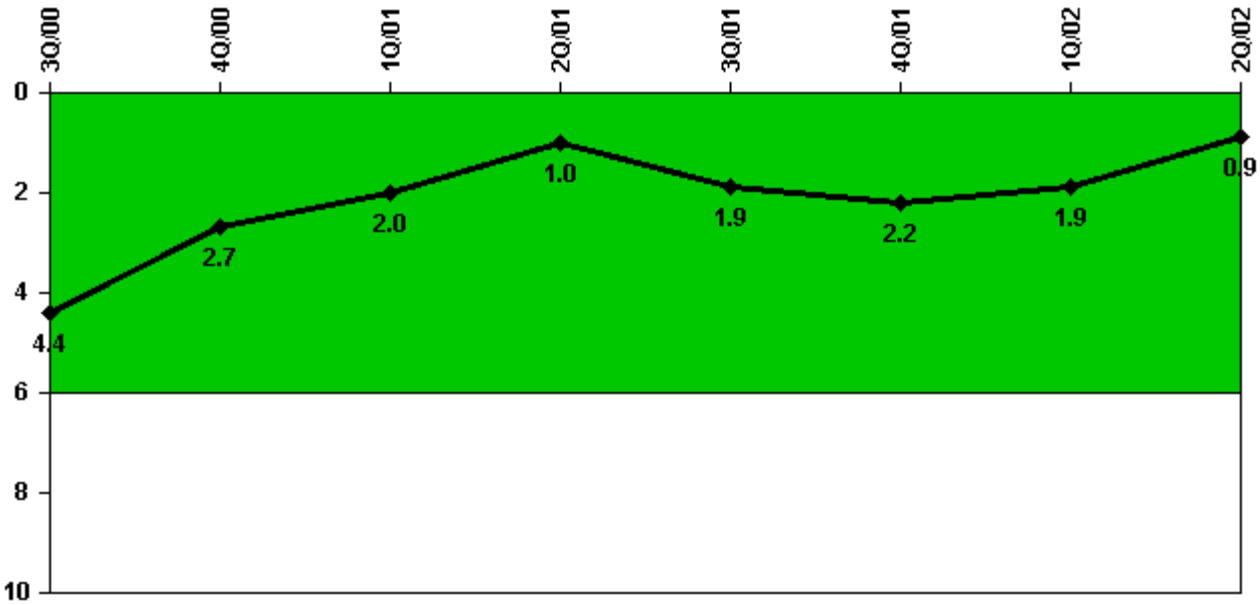
Thresholds: White > 2.0 Yellow > 10.0 Red > 20.0

#### Notes

Scrams with Loss of Normal Heat Removal	3Q/00	4Q/00	1Q/01	2Q/01	3Q/01	4Q/01	1Q/02	2Q/02
Scrams	0	0	0	0	0	0	0	0
Indicator value	0	0	0	0	0	0	0	0

Licensee Comments: none

### Unplanned Power Changes per 7000 Critical Hrs



Thresholds: White > 6.0

#### Notes

Unplanned Power Changes per 7000 Critical Hrs	3Q/00	4Q/00	1Q/01	2Q/01	3Q/01	4Q/01	1Q/02	2Q/02
Unplanned power changes	0	0	0	1.0	1.0	0	0	0
Critical hours	2208.0	2209.0	1129.7	1653.8	2208.0	1419.6	2160.0	2183.0
Indicator value	4.4	2.7	2.0	1.0	1.9	2.2	1.9	0.9

Licensee Comments: none

## Safety System Unavailability, HEG

Thresholds  
under  
development /  
review

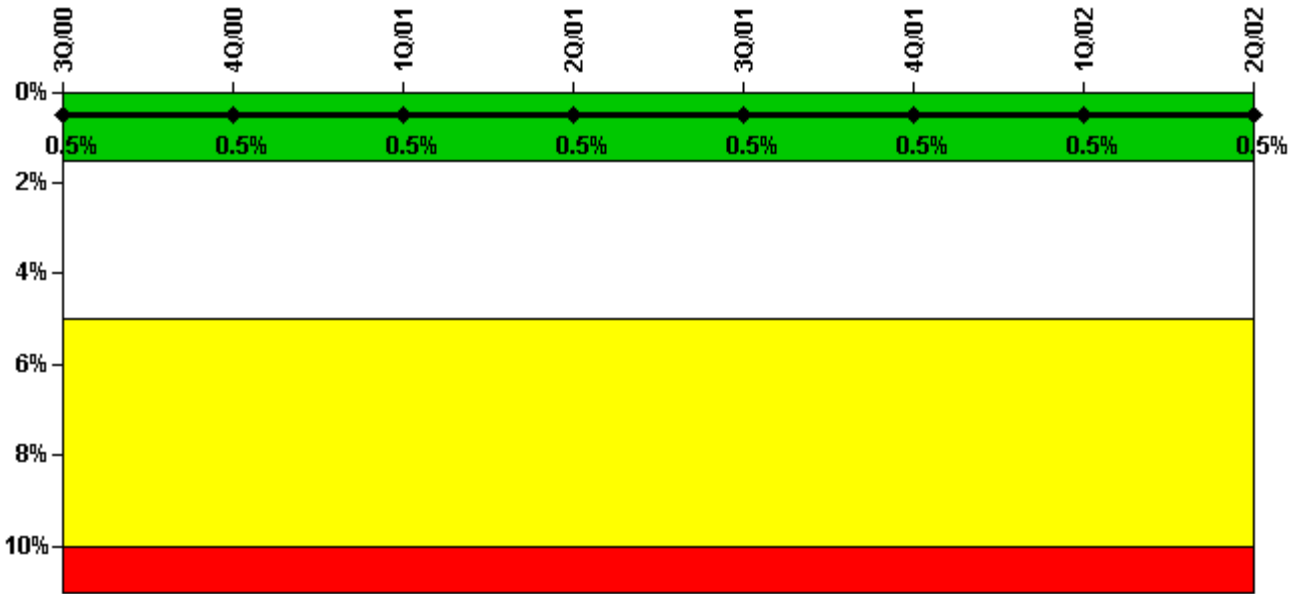
### Notes

Safety System Unavailability, HEG	3Q/00	4Q/00	1Q/01	2Q/01	3Q/01	4Q/01	1Q/02	2Q/02
<b>Train 1</b>								
Planned unavailable hours	33.23	111.97	31.81	27.75	88.28	38.17	99.01	59.32
Unplanned unavailable hours	0	0	0	0	50.40	0	38.77	0
Fault exposure hours	0	0	0	0	14.26	0	0	0
Effective Reset hours	0	0	0	0	0	0	0	0
Required hours	2208.00	2208.00	1128.53	1675.80	2208.00	2209.00	2160.00	2183.00
<b>Train 2</b>								
Planned unavailable hours	64.77	0.95	0	0	0	4.87	86.79	0.73
Unplanned unavailable hours	0	0	0	0	0	0	0	0
Fault exposure hours	0	0	0	0	0	0	0	0
Effective Reset hours	0	0	0	0	0	0	0	0
Required hours	2208.00	2208.00	1128.53	1675.80	2208.00	2209.00	2160.00	2183.00
<b>Indicator value</b>	<b>2.0%</b>	<b>2.1%</b>	<b>2.0%</b>	<b>2.1%</b>	<b>2.3%</b>	<b>2.4%</b>	<b>2.7%</b>	<b>2.7%</b>

Licensee Comments:

2Q/02: The FAQ for reporting the Keowee Hydro Emergency AC Power system is still under review by the NRC.

### Safety System Unavailability, High Pressure Injection System (HPSI)



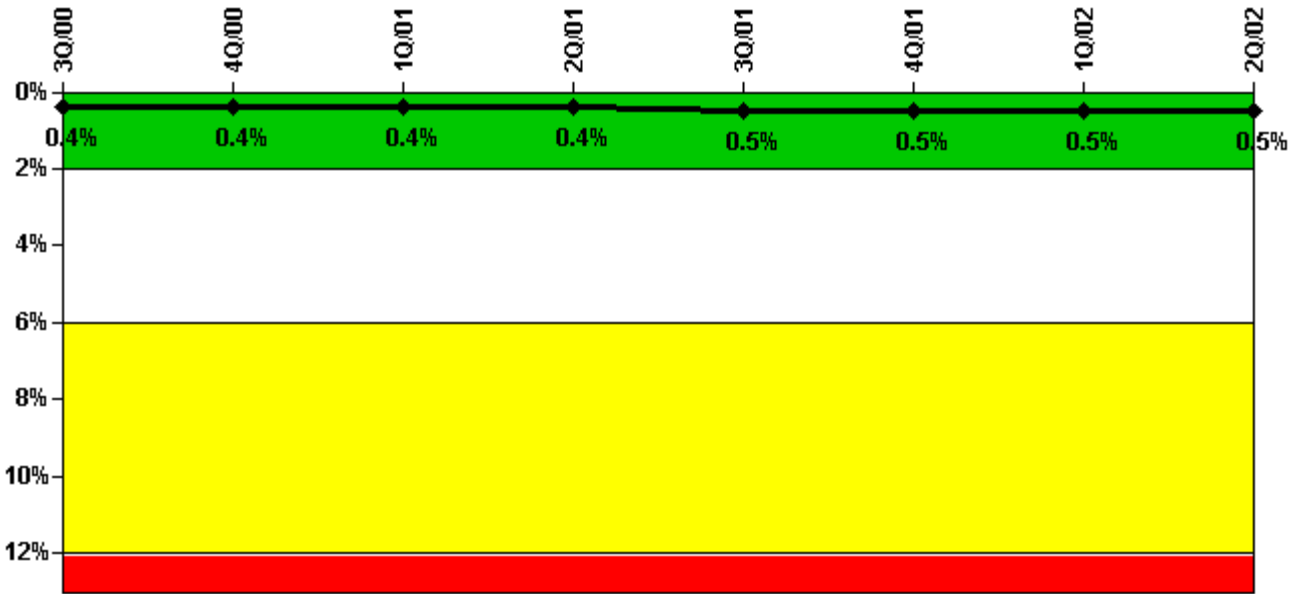
Thresholds: White > 1.5% Yellow > 5.0% Red > 10.0%

**Notes**

Safety System Unavailability, High Pressure Injection System (HPSI)	3Q/00	4Q/00	1Q/01	2Q/01	3Q/01	4Q/01	1Q/02	2Q/02
<b>Train 1</b>								
Planned unavailable hours	10.91	11.18	0.22	7.53	9.74	4.05	9.60	14.78
Unplanned unavailable hours	0	0	19.28	0	0	0	0	0
Fault exposure hours	0	0	0	0	0	0	0	0
Effective Reset hours	0	0	0	0	0	0	0	0
Required hours	2208.00	2208.00	1135.00	1657.00	2208.00	1460.75	2160.00	2183.00
<b>Train 2</b>								
Planned unavailable hours	14.31	14.32	0.68	13.53	7.20	6.10	12.06	9.07
Unplanned unavailable hours	0	0	0	0	0	0	0	0
Fault exposure hours	0	0	0	0	0	0	0	0
Effective Reset hours	0	0	0	0	0	0	0	0
Required hours	2208.00	2208.00	1135.00	1657.00	2208.00	1460.75	2160.00	2183.00
Indicator value	0.5%	0.5%	0.5%	0.5%	0.5%	0.5%	0.5%	0.5%

Licensee Comments: none

### Safety System Unavailability, Heat Removal System (AFW)



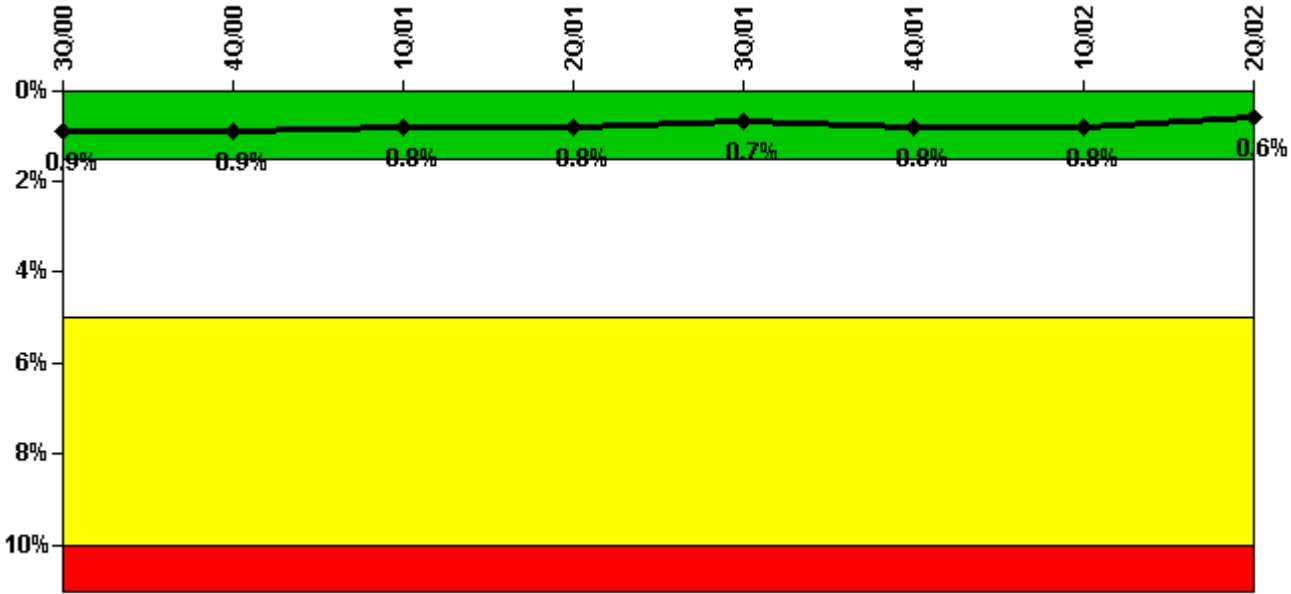
Thresholds: White > 2.0% Yellow > 6.0% Red > 12.0%

Notes

Safety System Unavailability, Heat Removal System (AFW)	3Q/00	4Q/00	1Q/01	2Q/01	3Q/01	4Q/01	1Q/02	2Q/02
<b>Train 1</b>								
Planned unavailable hours	2.50	11.70	0	0	1.80	18.20	8.90	2.66
Unplanned unavailable hours	0	0	0	31.30	0	0	0	0
Fault exposure hours	0	0	0	0	0	0	0	0
Effective Reset hours	0	0	0	0	0	0	0	0
Required hours	2208.00	2208.00	1141.00	1641.00	2208.00	1499.10	2160.00	2183.00
<b>Train 2</b>								
Planned unavailable hours	2.20	11.22	0	13.50	3.60	9.10	11.30	1.66
Unplanned unavailable hours	0	0	0	0	0	0	0	0
Fault exposure hours	0	0	0	0	0	0	0	0
Effective Reset hours	0	0	0	0	0	0	0	0
Required hours	2208.00	2208.00	1141.00	1641.00	2208.00	1499.10	2160.00	2183.00
<b>Train 3</b>								
Planned unavailable hours	4.00	23.00	0	2.20	21.60	16.75	2.20	5.30
Unplanned unavailable hours	0	0	0	0	0	0	0	0
Fault exposure hours	0	0	0	0	0	0	0	0
Effective Reset hours	0	0	0	0	0	0	0	0
Required hours	2208.00	2208.00	1141.00	1641.00	2208.00	1499.10	2160.00	2183.00
Indicator value	0.4%	0.4%	0.4%	0.4%	0.5%	0.5%	0.5%	0.5%

Licensee Comments: none

### Safety System Unavailability, Residual Heat Removal System



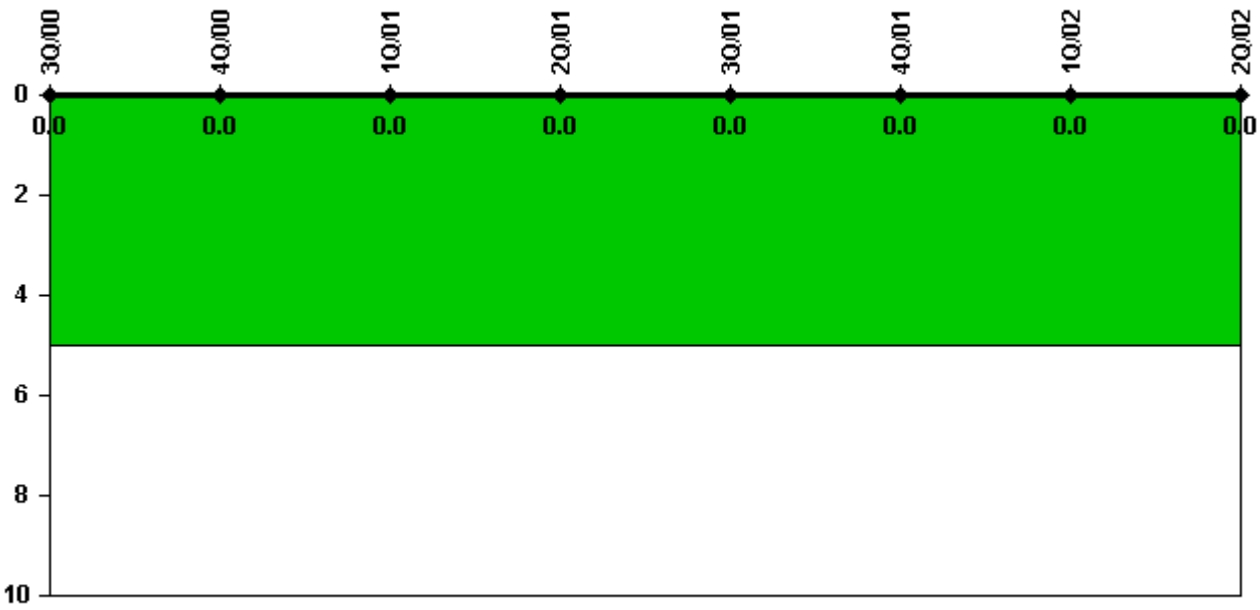
Thresholds: White > 1.5% Yellow > 5.0% Red > 10.0%

**Notes**

Safety System Unavailability, Residual Heat Removal System	3Q/00	4Q/00	1Q/01	2Q/01	3Q/01	4Q/01	1Q/02	2Q/02
<b>Train 1</b>								
Planned unavailable hours	17.00	4.74	0.60	12.70	19.10	14.90	19.60	1.30
Unplanned unavailable hours	0	0	0	0	0	0	0	0
Fault exposure hours	0	0	0	0	0	0	0	0
Effective Reset hours	0	0	0	0	0	0	0	0
Required hours	2208.00	2208.00	2160.00	2183.00	2208.00	2209.00	2160.00	2183.00
<b>Train 2</b>								
Planned unavailable hours	12.20	14.98	0.60	11.80	16.30	15.70	18.40	6.30
Unplanned unavailable hours	0	0	0	0	0	0	0	5.20
Fault exposure hours	0	0	0	0	0	0	0	0
Effective Reset hours	0	0	0	0	0	0	0	0
Required hours	2208.00	2208.00	2160.00	2183.00	2208.00	2209.00	2160.00	2183.00
<b>Indicator value</b>	<b>0.9%</b>	<b>0.9%</b>	<b>0.8%</b>	<b>0.8%</b>	<b>0.7%</b>	<b>0.8%</b>	<b>0.8%</b>	<b>0.6%</b>

Licensee Comments: none

### Safety System Functional Failures (PWR)



Thresholds: White > 5.0

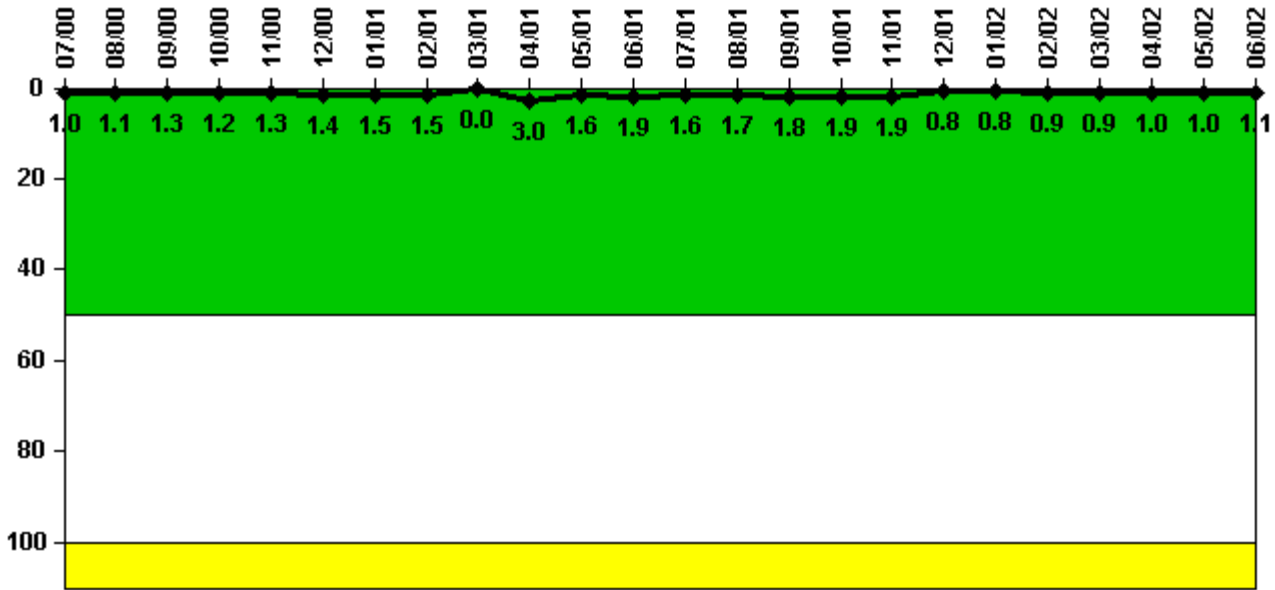
#### Notes

Safety System Functional Failures (PWR)	3Q/00	4Q/00	1Q/01	2Q/01	3Q/01	4Q/01	1Q/02	2Q/02
Safety System Functional Failures	0	0	0	0	0	0	0	0
Indicator value	0	0	0	0	0	0	0	0

Licensee Comments: none



### Reactor Coolant System Activity



Thresholds: White > 50.0 Yellow > 100.0

**Notes**

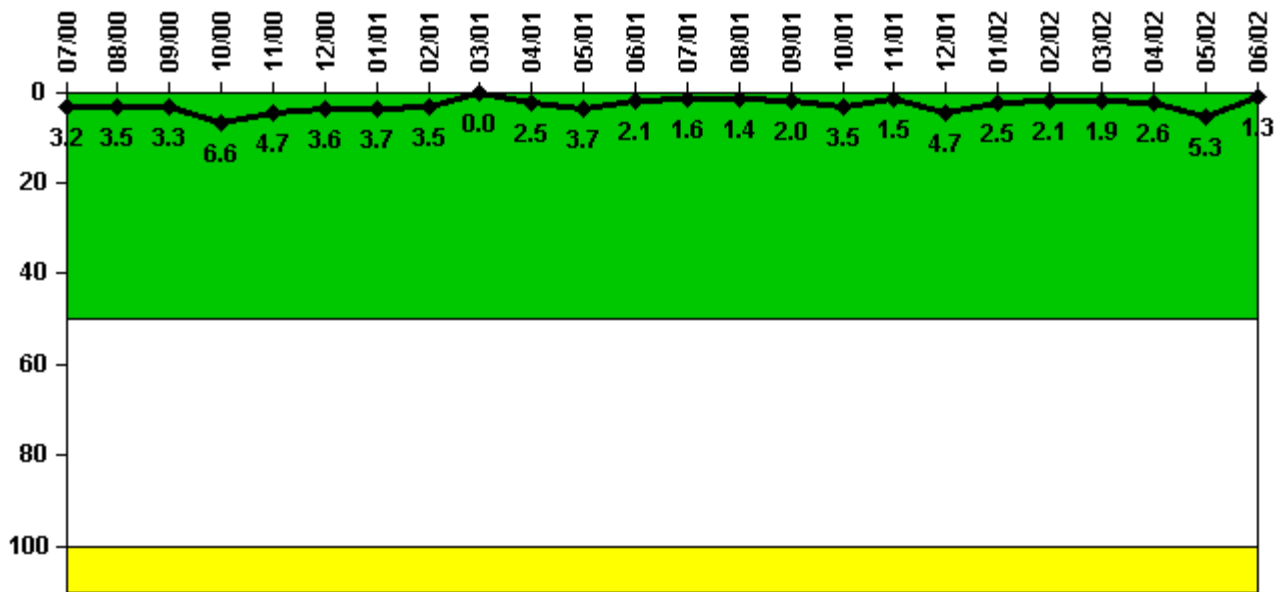
Reactor Coolant System Activity	7/00	8/00	9/00	10/00	11/00	12/00	1/01	2/01	3/01	4/01	5/01	6/01
Maximum activity	0.010290	0.010930	0.012900	0.012200	0.013000	0.014100	0.014600	0.014700	0	0.030000	0.016000	0.019000
Technical specification limit	1.0	1.0	1.0	1.0	1.0	1.0	1.0	1.0	1.0	1.0	1.0	1.0
Indicator value	1.0	1.1	1.3	1.2	1.3	1.4	1.5	1.5	0	3.0	1.6	1.9

Reactor Coolant System Activity	7/01	8/01	9/01	10/01	11/01	12/01	1/02	2/02	3/02	4/02	5/02	6/02
Maximum activity	0.016200	0.017200	0.018400	0.018900	0.018900	0.007600	0.008300	0.008600	0.009000	0.009700	0.010300	0.010700
Technical specification limit	1.0	1.0	1.0	1.0	1.0	1.0	1.0	1.0	1.0	1.0	1.0	1.0
Indicator value	1.6	1.7	1.8	1.9	1.9	0.8	0.8	0.9	0.9	1.0	1.0	1.1

Licensee Comments: none

### Reactor Coolant System Leakage



Thresholds: White > 50.0 Yellow > 100.0

**Notes**

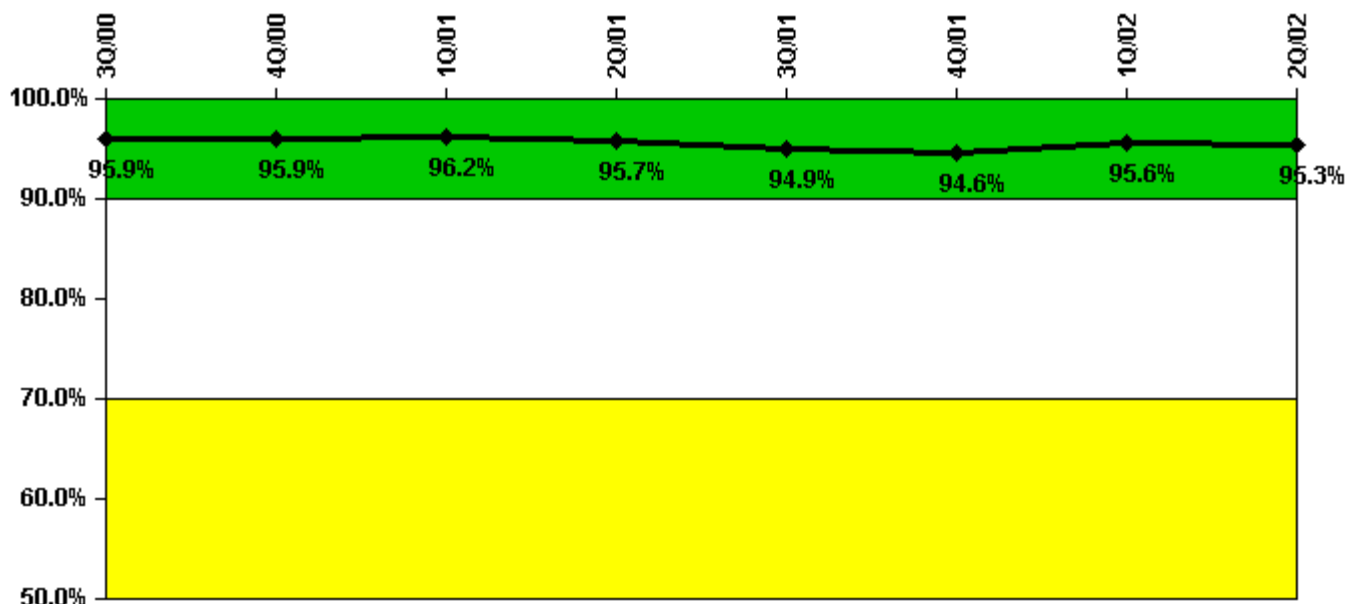
Reactor Coolant System Leakage	7/00	8/00	9/00	10/00	11/00	12/00	1/01	2/01	3/01	4/01	5/01	6/01
Maximum leakage	0.320	0.350	0.330	0.660	0.470	0.360	0.370	0.350	0	0.250	0.370	0.210
Technical specification limit	10.0	10.0	10.0	10.0	10.0	10.0	10.0	10.0	10.0	10.0	10.0	10.0
Indicator value	3.2	3.5	3.3	6.6	4.7	3.6	3.7	3.5	0	2.5	3.7	2.1

Reactor Coolant System Leakage	7/01	8/01	9/01	10/01	11/01	12/01	1/02	2/02	3/02	4/02	5/02	6/02
Maximum leakage	0.160	0.140	0.200	0.350	0.150	0.470	0.250	0.210	0.190	0.260	0.530	0.130
Technical specification limit	10.0	10.0	10.0	10.0	10.0	10.0	10.0	10.0	10.0	10.0	10.0	10.0
Indicator value	1.6	1.4	2.0	3.5	1.5	4.7	2.5	2.1	1.9	2.6	5.3	1.3

Licensee Comments: none

### Drill/Exercise Performance



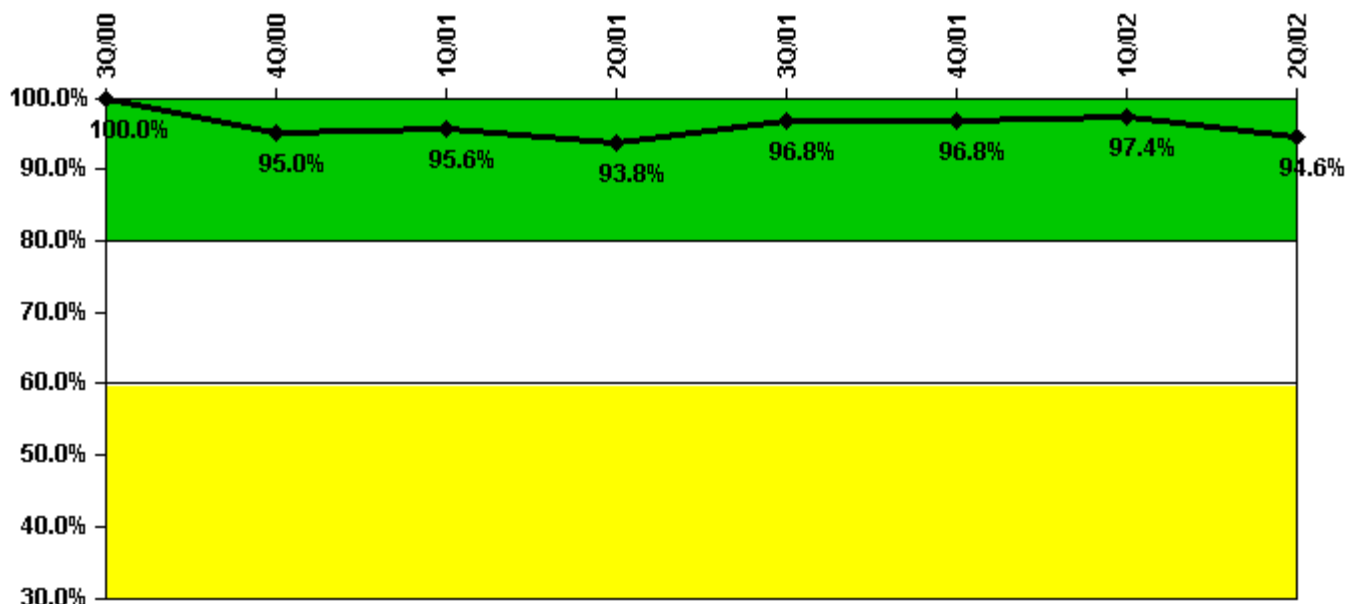
Thresholds: White < 90.0% Yellow < 70.0%

#### Notes

Drill/Exercise Performance	3Q/00	4Q/00	1Q/01	2Q/01	3Q/01	4Q/01	1Q/02	2Q/02
Successful opportunities	17.0	38.0	22.0	23.0	48.0	9.0	12.0	32.0
Total opportunities	17.0	39.0	22.0	25.0	52.0	10.0	12.0	34.0
Indicator value	95.9%	95.9%	96.2%	95.7%	94.9%	94.6%	95.6%	95.3%

Licensee Comments: none

### ERO Drill Participation



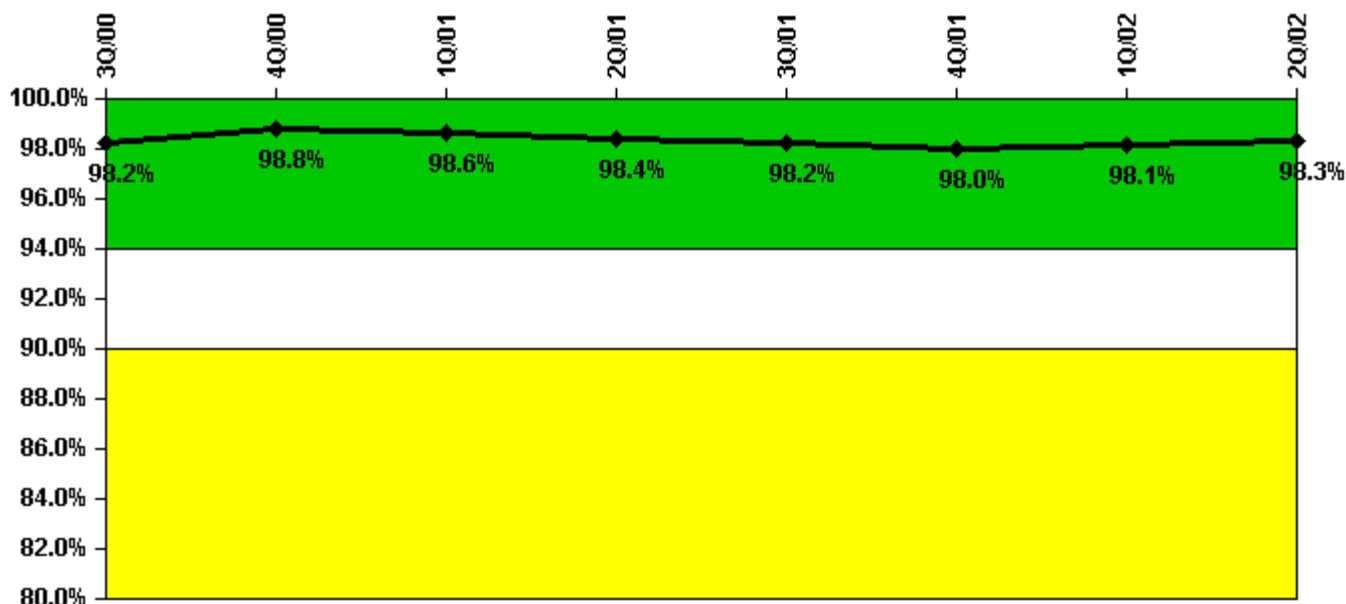
Thresholds: White < 80.0% Yellow < 60.0%

#### Notes

ERO Drill Participation	3Q/00	4Q/00	1Q/01	2Q/01	3Q/01	4Q/01	1Q/02	2Q/02
Participating Key personnel	138.0	132.0	131.0	135.0	150.0	150.0	149.0	141.0
Total Key personnel	138.0	139.0	137.0	144.0	155.0	155.0	153.0	149.0
Indicator value	100.0%	95.0%	95.6%	93.8%	96.8%	96.8%	97.4%	94.6%

Licensee Comments: none

### Alert & Notification System



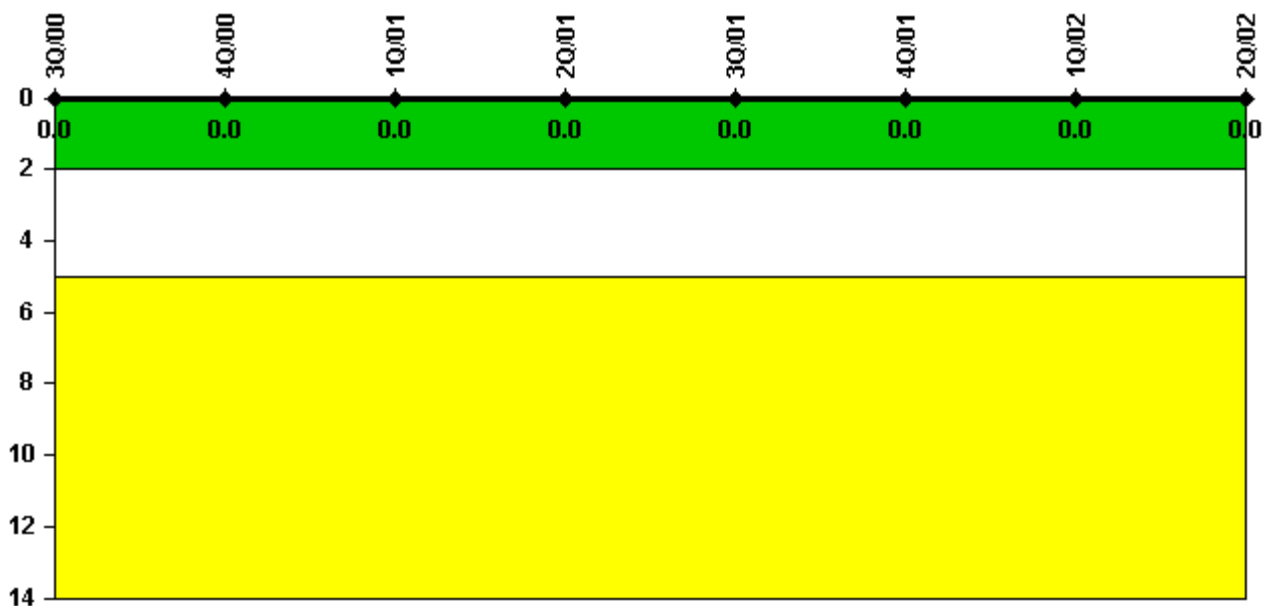
Thresholds: White < 94.0% Yellow < 90.0%

#### Notes

Alert & Notification System	3Q/00	4Q/00	1Q/01	2Q/01	3Q/01	4Q/01	1Q/02	2Q/02
Successful siren-tests	1194	1320	1304	1246	1084	1154	1092	1092
Total sirens-tests	1211	1330	1330	1275	1108	1172	1109	1111
Indicator value	98.2%	98.8%	98.6%	98.4%	98.2%	98.0%	98.1%	98.3%

Licensee Comments: none

### Occupational Exposure Control Effectiveness



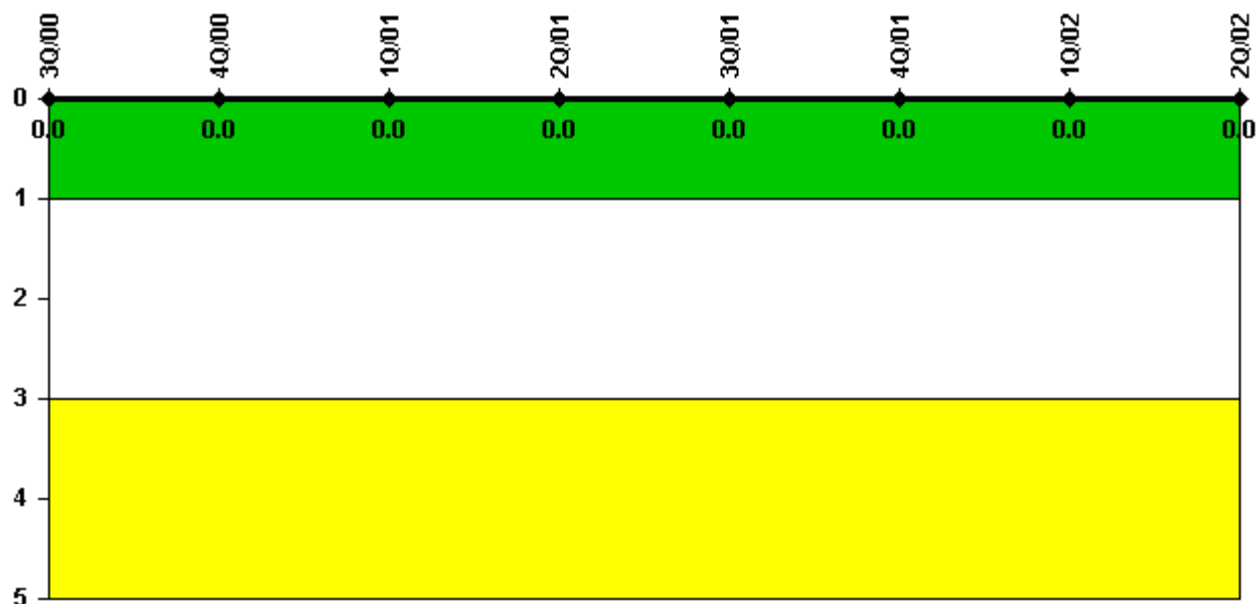
Thresholds: White > 2.0 Yellow > 5.0

#### Notes

Occupational Exposure Control Effectiveness	3Q/00	4Q/00	1Q/01	2Q/01	3Q/01	4Q/01	1Q/02	2Q/02
High radiation area occurrences	0	0	0	0	0	0	0	0
Very high radiation area occurrences	0	0	0	0	0	0	0	0
Unintended exposure occurrences	0	0	0	0	0	0	0	0
Indicator value	0	0	0	0	0	0	0	0

Licensee Comments: none

### RETS/ODCM Radiological Effluent



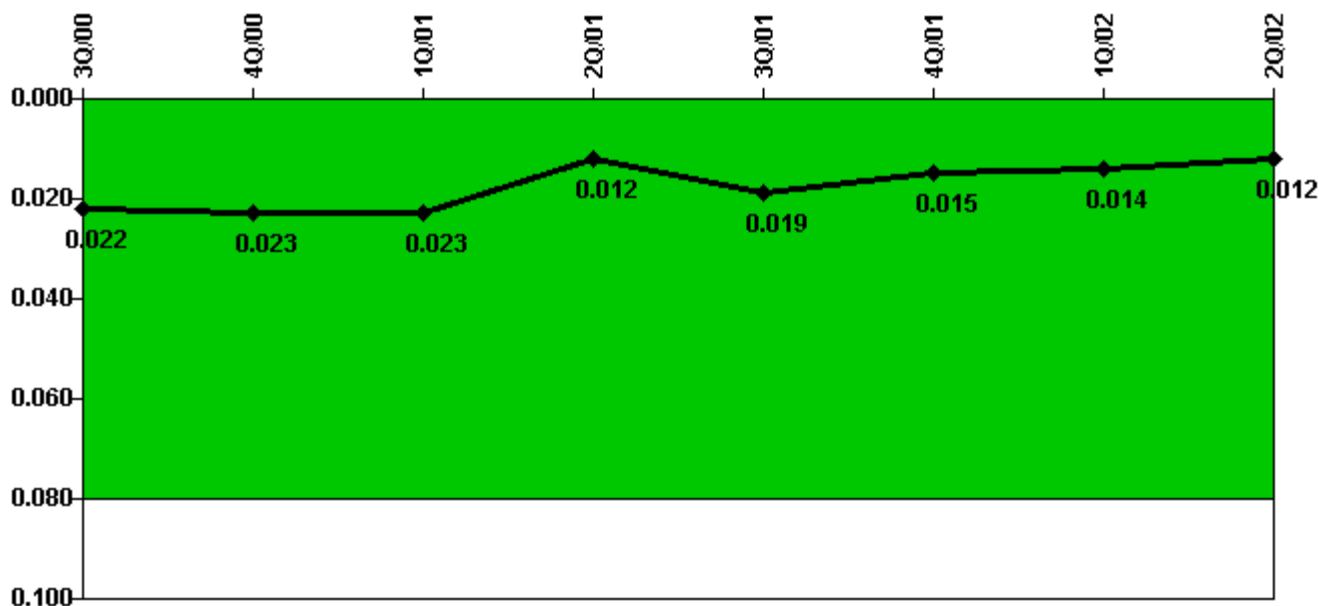
Thresholds: White > 1.0 Yellow > 3.0

#### Notes

RETS/ODCM Radiological Effluent	3Q/00	4Q/00	1Q/01	2Q/01	3Q/01	4Q/01	1Q/02	2Q/02
RETS/ODCM occurrences	0	0	0	0	0	0	0	0
Indicator value	0	0	0	0	0	0	0	0

Licensee Comments: none

### Protected Area Security Performance Index



Thresholds: White > 0.080

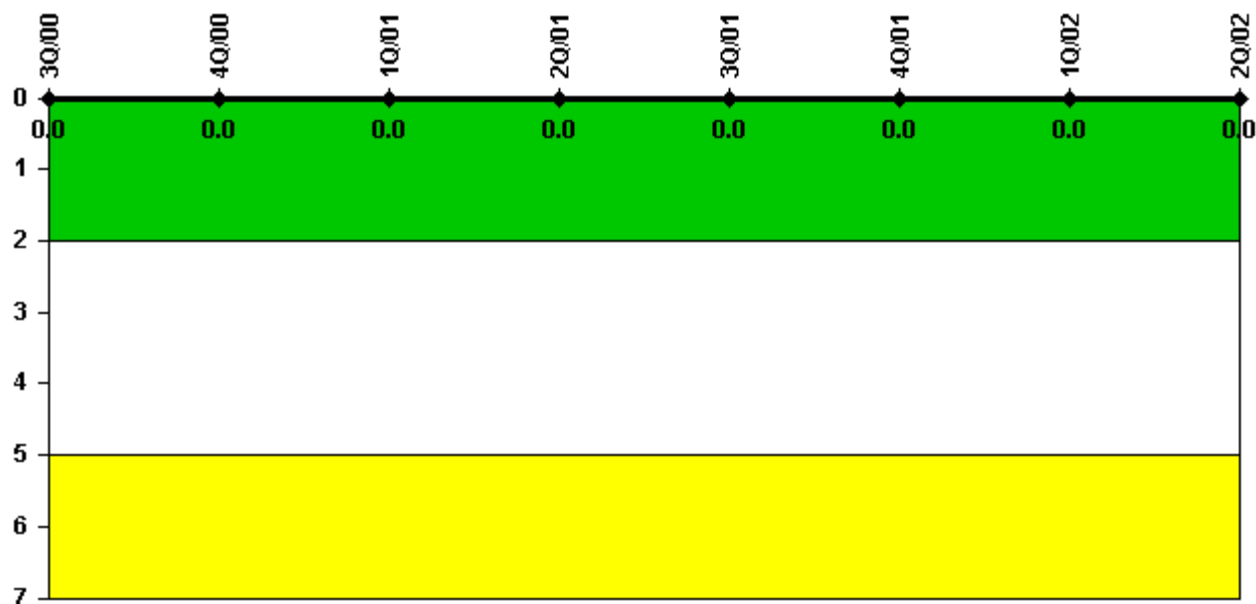
#### Notes

Protected Area Security Performance Index	3Q/00	4Q/00	1Q/01	2Q/01	3Q/01	4Q/01	1Q/02	2Q/02
IDS compensatory hours	162.00	225.00	64.00	91.00	457.00	30.00	26.00	47.00
CCTV compensatory hours	8.0	0	1.0	14.0	11.0	0	0	0
IDS normalization factor	2.80	2.80	2.80	2.80	2.80	2.80	2.80	2.80
CCTV normalization factor	1.0	1.0	1.0	1.0	1.0	1.0	1.0	1.0
Index Value	0.022	0.023	0.023	0.012	0.019	0.015	0.014	0.012

Licensee Comments: none



### Personnel Screening Program



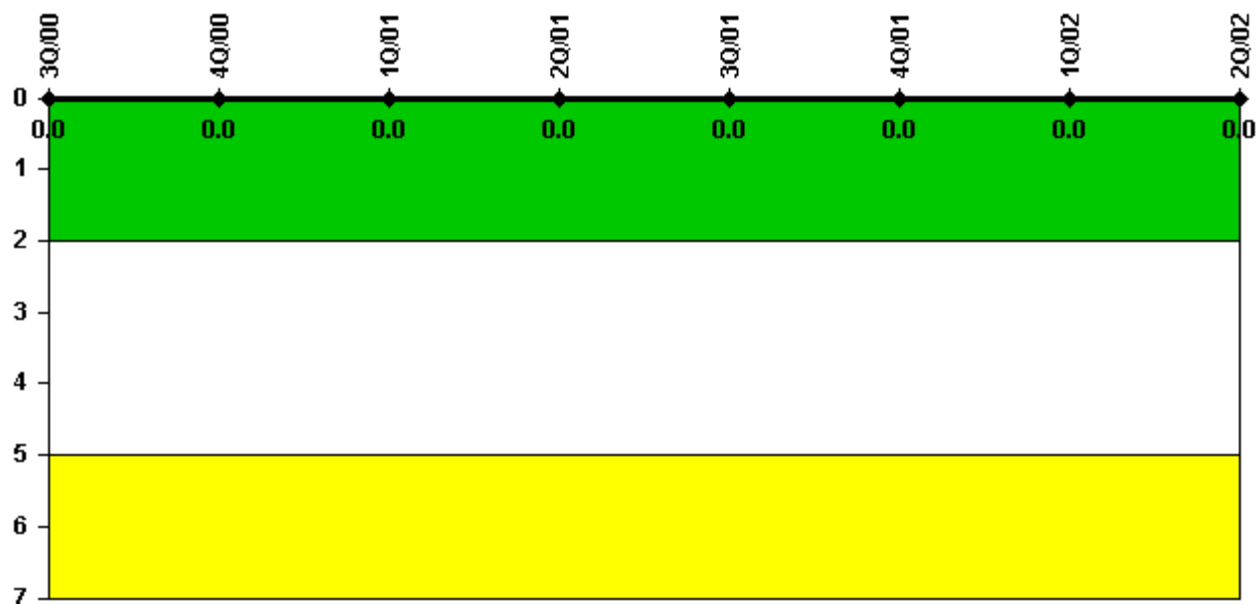
Thresholds: White > 2.0 Yellow > 5.0

#### Notes

Personnel Screening Program	3Q/00	4Q/00	1Q/01	2Q/01	3Q/01	4Q/01	1Q/02	2Q/02
Program failures	0	0	0	0	0	0	0	0
Indicator value	0	0	0	0	0	0	0	0

Licensee Comments: none

### FFD/Personnel Reliability



Thresholds: White > 2.0 Yellow > 5.0

#### Notes

FFD/Personnel Reliability	3Q/00	4Q/00	1Q/01	2Q/01	3Q/01	4Q/01	1Q/02	2Q/02
Program Failures	0	0	0	0	0	0	0	0
Indicator value	0	0	0	0	0	0	0	0

Licensee Comments: none

▲ [PI Summary](#) | [Inspection Findings Summary](#) | [Reactor Oversight Process](#)

Last Modified: August 16, 2002