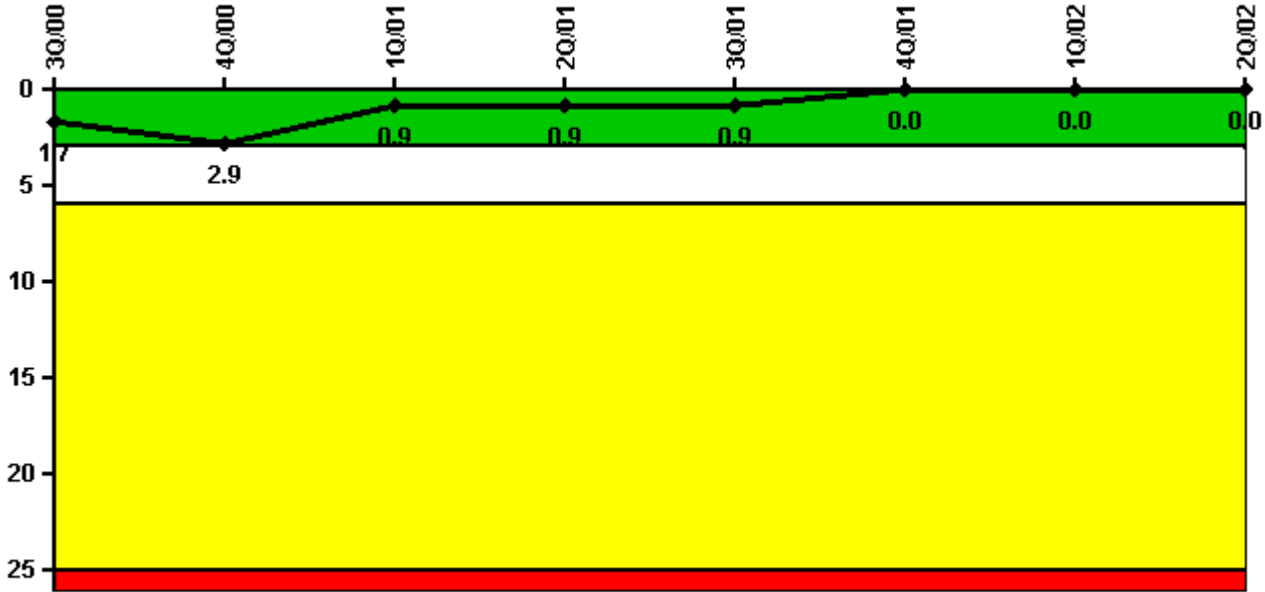


Oyster Creek

2Q/2002 Performance Indicators

Licensee's General Comments: none

Unplanned Scrams per 7000 Critical Hrs



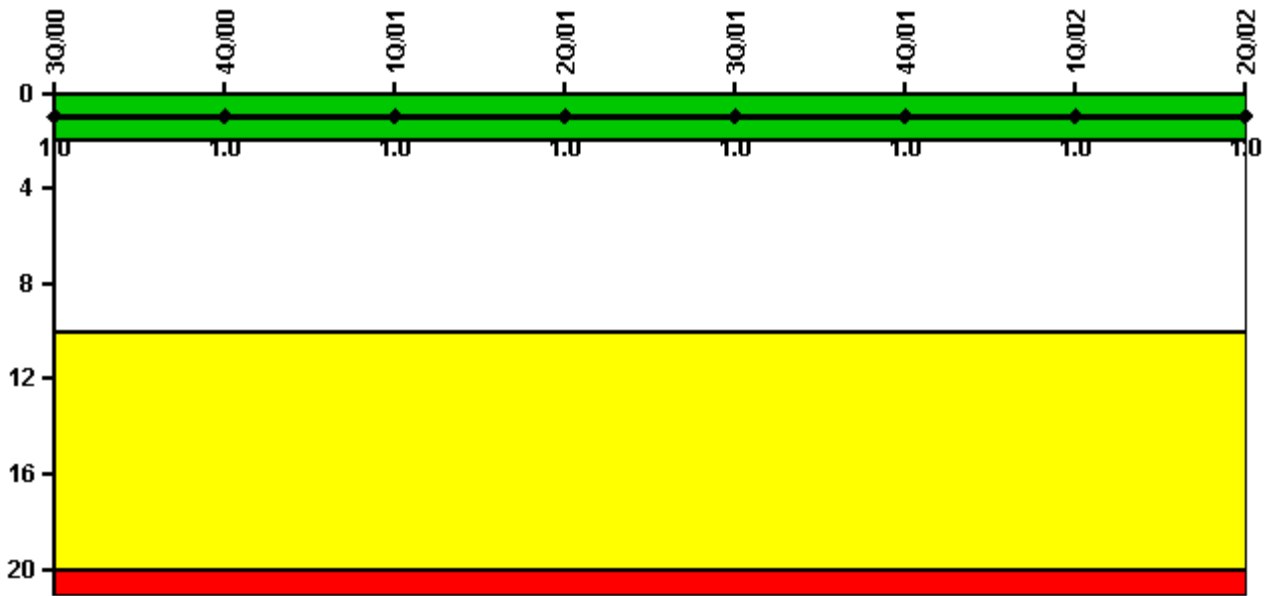
Thresholds: White > 3.0 Yellow > 6.0 Red > 25.0

Notes

Unplanned Scrams per 7000 Critical Hrs	3Q/00	4Q/00	1Q/01	2Q/01	3Q/01	4Q/01	1Q/02	2Q/02
Unplanned scrams	0	1.0	0	0	0	0	0	0
Critical hours	2105.4	1411.1	2160.0	2130.1	2208.0	2048.7	2160.0	2183.0
Indicator value	1.7	2.9	0.9	0.9	0.9	0	0	0

Licensee Comments: none

Scrams with Loss of Normal Heat Removal



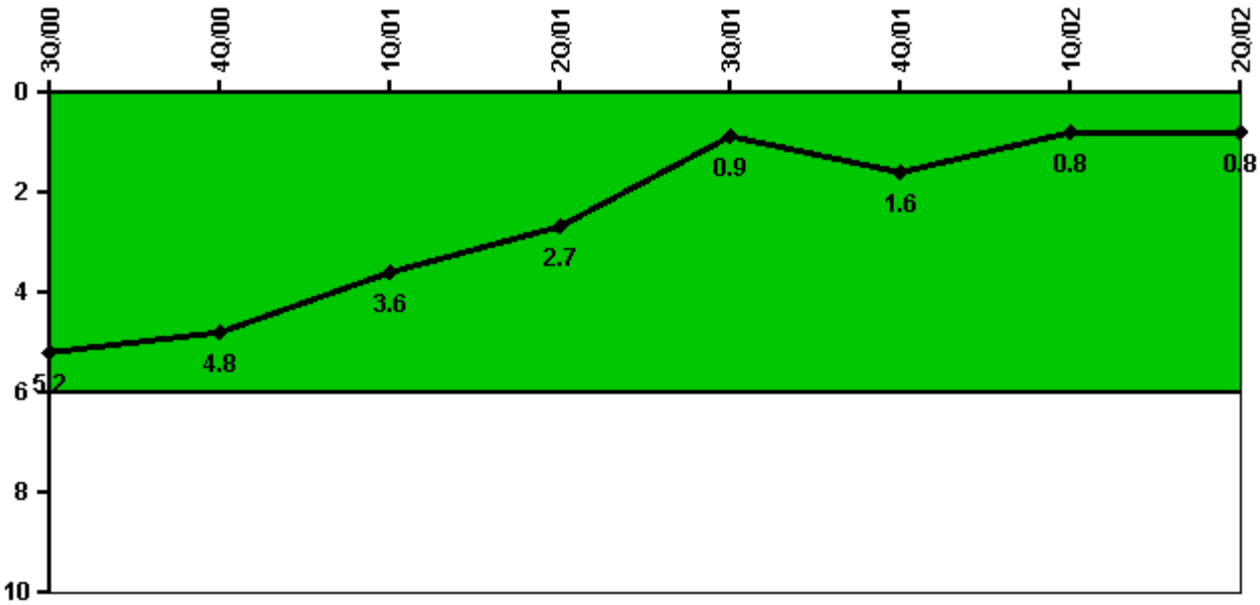
Thresholds: White > 2.0 Yellow > 10.0 Red > 20.0

Notes

Scrams with Loss of Normal Heat Removal	3Q/00	4Q/00	1Q/01	2Q/01	3Q/01	4Q/01	1Q/02	2Q/02
Scrams	0	0	0	0	0	0	0	0
Indicator value	1.0	1.0	1.0	1.0	1.0	1.0	1.0	1.0

Licensee Comments: none

Unplanned Power Changes per 7000 Critical Hrs



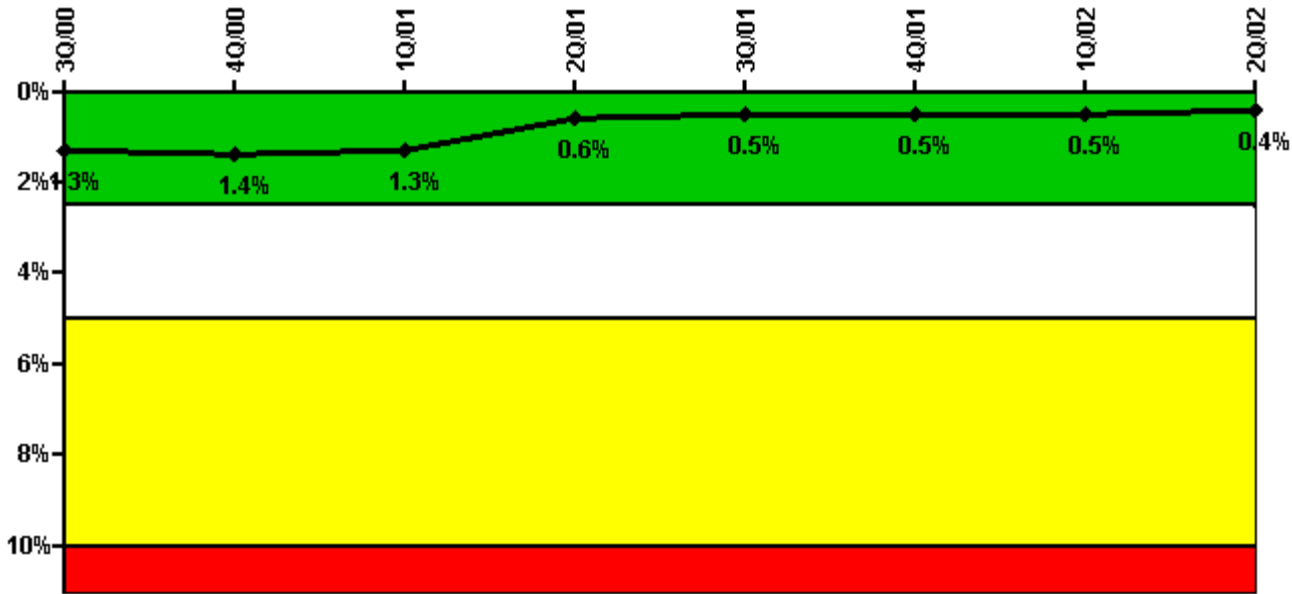
Thresholds: White > 6.0

Notes

Unplanned Power Changes per 7000 Critical Hrs	3Q/00	4Q/00	1Q/01	2Q/01	3Q/01	4Q/01	1Q/02	2Q/02
Unplanned power changes	2.0	0	1.0	0	0	1.0	0	0
Critical hours	2105.4	1411.1	2160.0	2130.1	2208.0	2048.7	2160.0	2183.0
Indicator value	5.2	4.8	3.6	2.7	0.9	1.6	0.8	0.8

Licensee Comments: none

Safety System Unavailability, Emergency AC Power



Thresholds: White > 2.5% Yellow > 5.0% Red > 10.0%

Notes

Safety System Unavailability, Emergency AC Power	3Q/00	4Q/00	1Q/01	2Q/01	3Q/01	4Q/01	1Q/02	2Q/02
Train 1								
Planned unavailable hours	0	11.42	0	9.22	0	12.57	0	0
Unplanned unavailable hours	0	0	0	0	0	0	0	0
Fault exposure hours	0	0	0	0	0	0	0	0
Effective Reset hours	0	0	0	0	0	0	0	0
Required hours	2208.00	2209.00	2160.00	2183.00	2208.00	2209.00	2160.00	2183.00
Train 2								
Planned unavailable hours	0	0	7.40	0	16.00	0	7.52	4.90
Unplanned unavailable hours	0	0	0	13.43	53.24	0	0	0
Fault exposure hours	0	0	0	0	0	0	0	0
Effective Reset hours	0	0	0	0	0	0	0	0
Required hours	2208.00	2209.00	2160.00	2183.00	2208.00	2209.00	2160.00	2183.00
Indicator value	1.3%	1.4%	1.3%	0.6%	0.5%	0.5%	0.5%	0.4%

Licensee Comments: none

Safety System Unavailability, High Pressure Injection System

**Not applicable due to
 unique design
 characteristics.
 Performance in this area
 will be assessed through
 focused NRC inspection
 efforts.**

Notes

Safety System Unavailability, High Pressure Injection System	3Q/00	4Q/00	1Q/01	2Q/01	3Q/01	4Q/01	1Q/02	2Q/02
Train 1								
Planned unavailable hours	11.23	9.70	10.20	15.45	10.20	10.90	10.80	11.20
Unplanned unavailable hours	0	0	0	0.75	0	0	0	0
Fault exposure hours	0	0	0	0	0	0	0	0
Effective Reset hours	0	0	0	0	0	0	0	0
Required hours	2120.90	1444.20	2160.00	2139.60	2208.00	2065.00	2160.00	2183.00
Train 2								
Planned unavailable hours	24.31	11.40	11.60	16.88	10.60	12.30	9.60	8.60
Unplanned unavailable hours	0	0	0	0	0	0	0	0
Fault exposure hours	0	0	0	0	0	0	0	0
Effective Reset hours	0	0	0	0	0	0	0	0
Required hours	2120.90	1444.20	2160.00	2139.60	2208.00	2065.00	2160.00	2183.00
Indicator value	0.8%	0.9%	0.9%	0.9%	0.9%	0.9%	1.0%	1.0%

Licensee Comments:

2Q/02: April data corrected for Daylight Savings Time

Safety System Unavailability, Heat Removal System

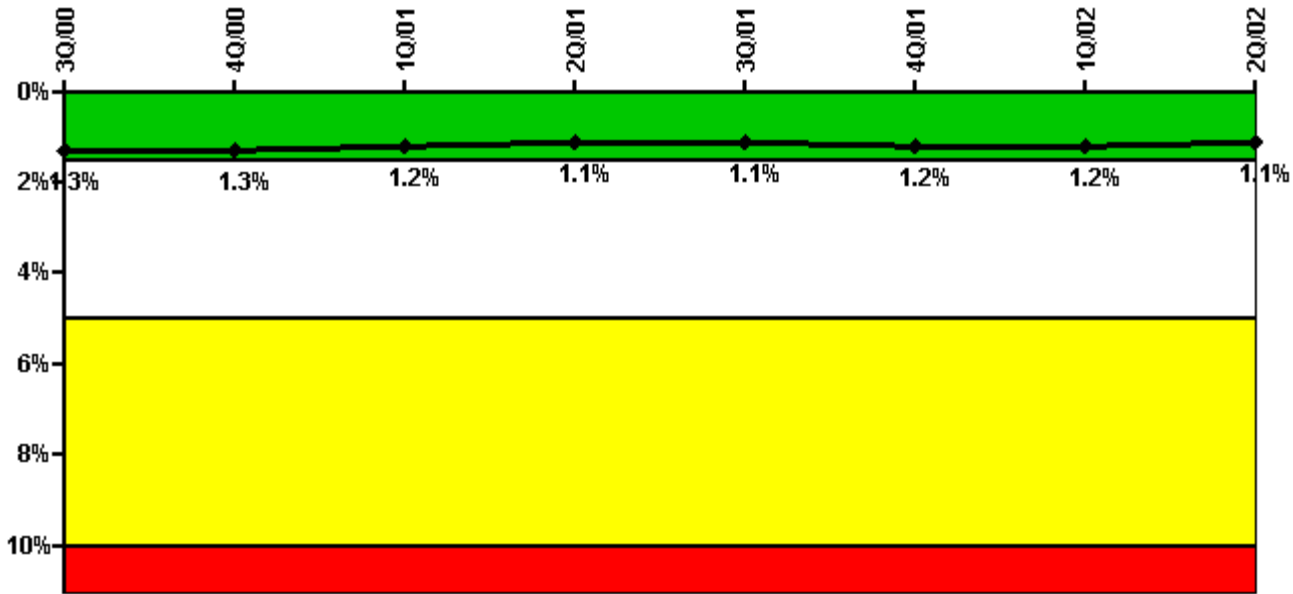
**Thresholds
under
development /
review**

Notes

Safety System Unavailability, Heat Removal System	3Q/00	4Q/00	1Q/01	2Q/01	3Q/01	4Q/01	1Q/02	2Q/02
Train 1								
Planned unavailable hours								
Unplanned unavailable hours								
Fault exposure hours								
Effective Reset hours	0	0	0	0	0	0	0	0
Required hours								
Train 2								
Planned unavailable hours								
Unplanned unavailable hours								
Fault exposure hours								
Effective Reset hours	0	0	0	0	0	0	0	0
Required hours								
Indicator value								

Licensee Comments: none

Safety System Unavailability, Residual Heat Removal System



Thresholds: White > 1.5% Yellow > 5.0% Red > 10.0%

Notes

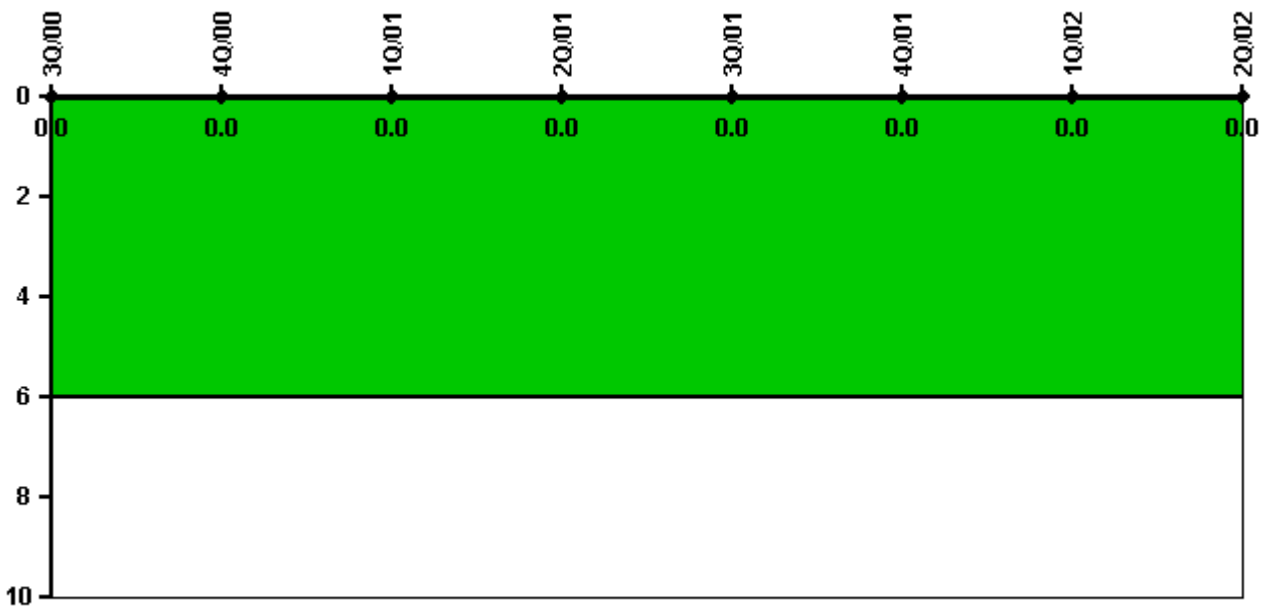
Safety System Unavailability, Residual Heat Removal System	3Q/00	4Q/00	1Q/01	2Q/01	3Q/01	4Q/01	1Q/02	2Q/02
Train 1								
Planned unavailable hours	7.04	244.70	13.50	0	32.20	0	7.20	0
Unplanned unavailable hours	0	7.30	1.60	0	0	0	0	0
Fault exposure hours	0	0	0	0	0	0	0	0
Effective Reset hours	0	0	0	0	0	0	0	0
Required hours	2208.00	2208.00	2160.00	2183.00	2208.00	2209.00	2160.00	2183.00
Train 2								
Planned unavailable hours	0	1.60	0	14.48	0	8.40	11.40	4.40
Unplanned unavailable hours	0	7.30	1.60	0.30	0	15.90	15.80	0
Fault exposure hours	0	0	0	0	0	0	0	0
Effective Reset hours	0	0	0	0	0	0	0	0
Required hours	2208.00	2208.00	2160.00	2183.00	2208.00	2209.00	2160.00	2183.00
Train 3								
Planned unavailable hours	0	46.60	0	21.30	0	5.00	0	10.40
Unplanned unavailable hours	0	7.30	1.60	0	0	15.90	0	0
Fault exposure hours	0	0	0	0	0	0	0	0
Effective Reset hours	0	0	0	0	0	0	0	0
Required hours	2208.00	2208.00	2160.00	2183.00	2208.00	2209.00	2160.00	2183.00
Train 4								
Planned unavailable hours	38.69	17.30	30.39	3.78	5.80	2.70	5.00	2.90
Unplanned unavailable hours	0	0	0	0	0	0	0	0
Fault exposure hours	0	0	0	0	0	0	0	0
Effective Reset hours	0	0	0	0	0	0	0	0
Required hours	2120.87	1436.00	2160.00	2139.60	2208.00	2065.00	2160.00	2183.00

Train 5								
Planned unavailable hours	2.77	1.12	4.32	43.41	2.90	2.30	39.60	3.40
Unplanned unavailable hours	12.79	2.98	0	0	156.90	28.00	4.00	0
Fault exposure hours	0	0	0	0	0	0	0	0
Effective Reset hours	0	0	0	0	0	0	0	0
Required hours	2120.87	1436.00	2160.00	2139.60	2208.00	2065.00	2160.00	2183.00
Indicator value	1.3%	1.3%	1.2%	1.1%	1.1%	1.2%	1.2%	1.1%

Licensee Comments:

2Q/02: April data corected for Daylight Savings Time.

Safety System Functional Failures (BWR)



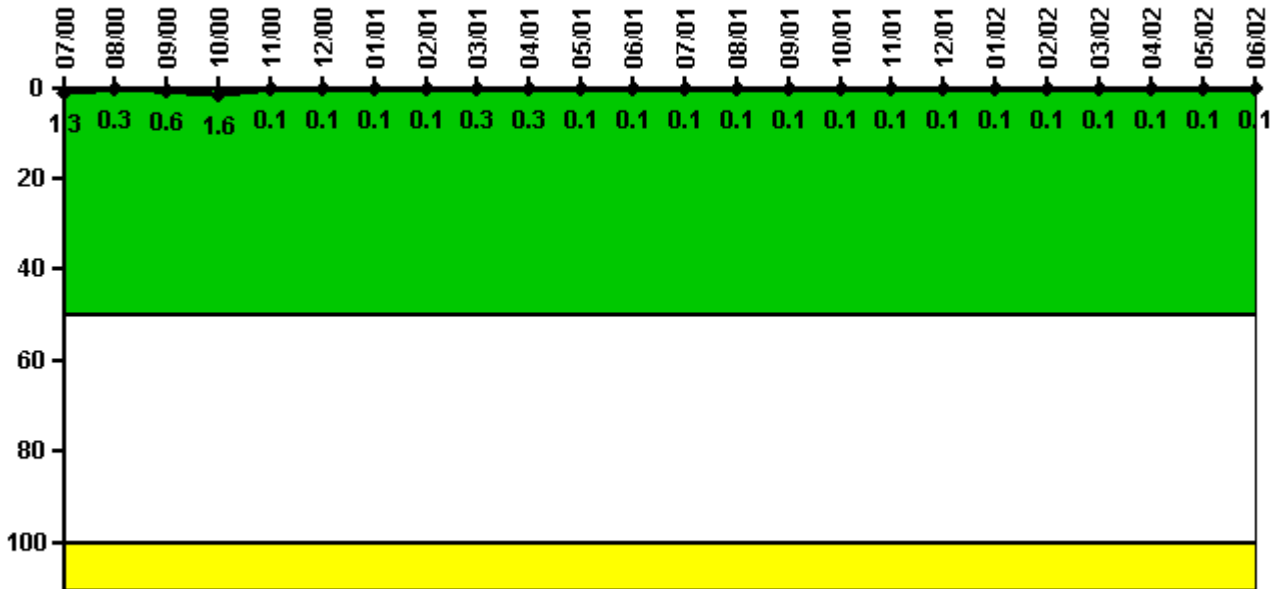
Thresholds: White > 6.0

Notes

Safety System Functional Failures (BWR)	3Q/00	4Q/00	1Q/01	2Q/01	3Q/01	4Q/01	1Q/02	2Q/02
Safety System Functional Failures	0	0	0	0	0	0	0	0
Indicator value	0	0	0	0	0	0	0	0

Licensee Comments: none

Reactor Coolant System Activity



Thresholds: White > 50.0 Yellow > 100.0

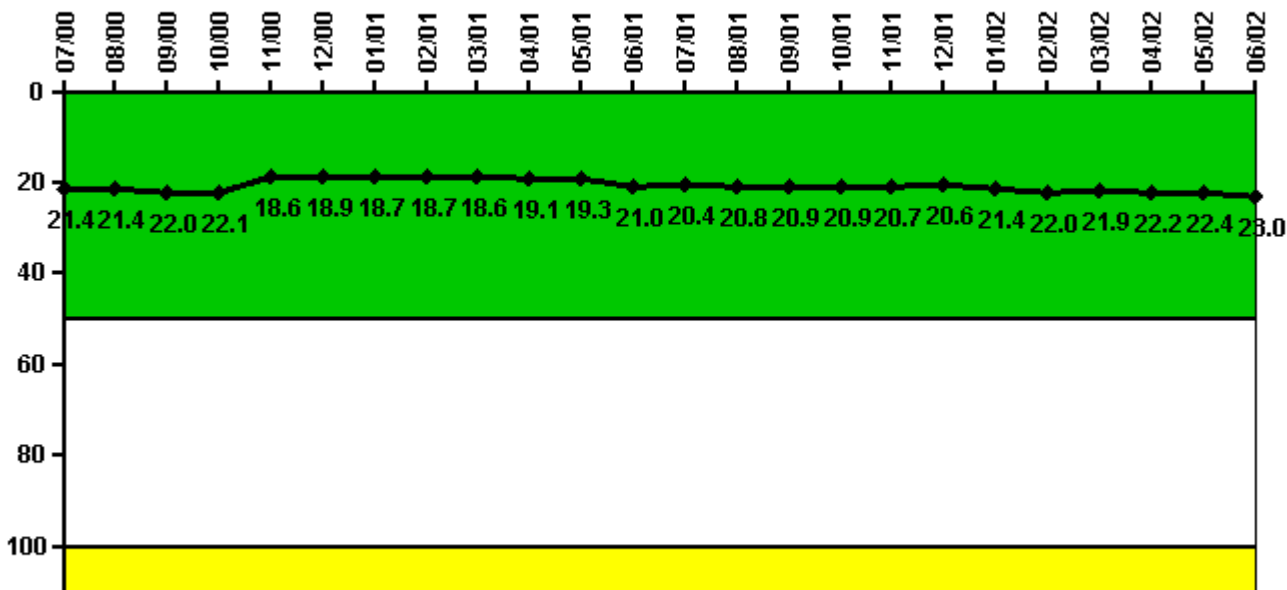
Notes

Reactor Coolant System Activity	7/00	8/00	9/00	10/00	11/00	12/00	1/01	2/01	3/01	4/01	5/01	6/01
Maximum activity	0.002540	0.000577	0.001280	0.003280	0.000164	0.000185	0.000133	0.000276	0.000513	0.000506	0.000264	0.000238
Technical specification limit	0.2	0.2	0.2	0.2	0.2	0.2	0.2	0.2	0.2	0.2	0.2	0.2
Indicator value	1.3	0.3	0.6	1.6	0.1	0.1	0.1	0.1	0.3	0.3	0.1	0.1

Reactor Coolant System Activity	7/01	8/01	9/01	10/01	11/01	12/01	1/02	2/02	3/02	4/02	5/02	6/02
Maximum activity	0.000158	0.000117	0.000144	0.000122	0.000192	0.000197	0.000141	0.000218	0.000108	0.000203	0.000152	0.000210
Technical specification limit	0.2	0.2	0.2	0.2	0.2	0.2	0.2	0.2	0.2	0.2	0.2	0.2
Indicator value	0.1	0.1	0.1	0.1	0.1	0.1	0.1	0.1	0.1	0.1	0.1	0.1

Licensee Comments: none

Reactor Coolant System Leakage



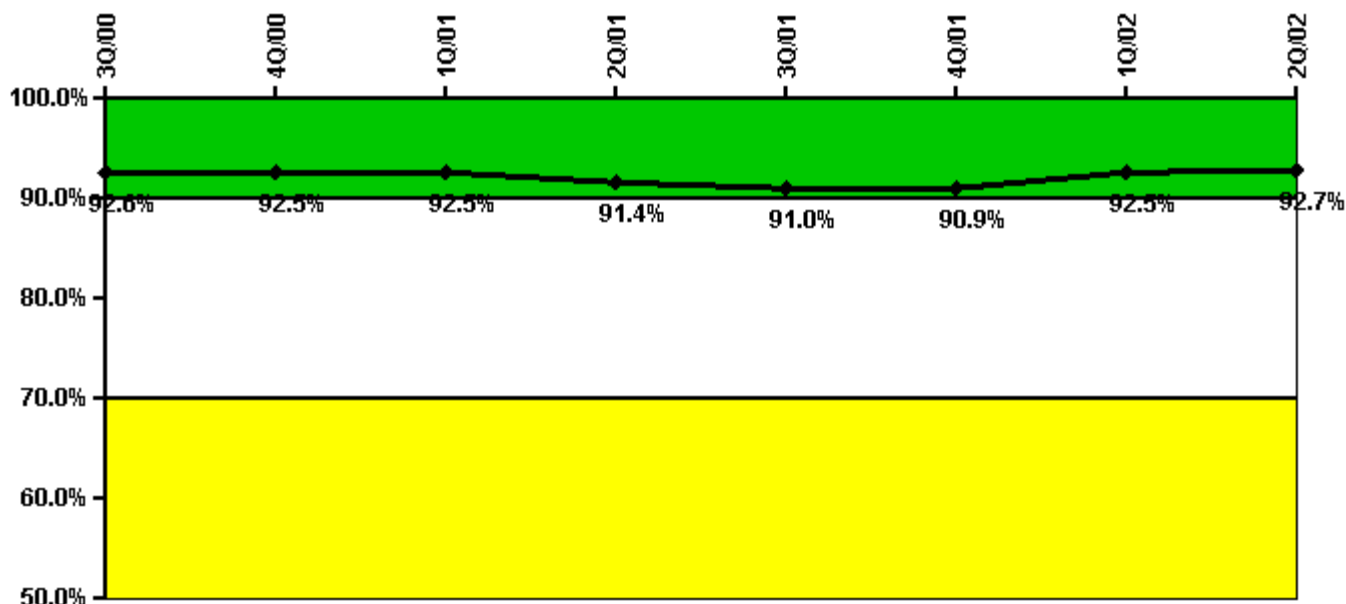
Thresholds: White > 50.0 Yellow > 100.0

Notes

Reactor Coolant System Leakage	7/00	8/00	9/00	10/00	11/00	12/00	1/01	2/01	3/01	4/01	5/01	6/01
Maximum leakage	5.350	5.340	5.490	5.520	4.650	4.720	4.670	4.680	4.640	4.770	4.830	5.240
Technical specification limit	25.0	25.0	25.0	25.0	25.0	25.0	25.0	25.0	25.0	25.0	25.0	25.0
Indicator value	21.4	21.4	22.0	22.1	18.6	18.9	18.7	18.7	18.6	19.1	19.3	21.0
Reactor Coolant System Leakage	7/01	8/01	9/01	10/01	11/01	12/01	1/02	2/02	3/02	4/02	5/02	6/02
Maximum leakage	5.090	5.210	5.220	5.220	5.170	5.150	5.350	5.500	5.470	5.540	5.590	5.750
Technical specification limit	25.0	25.0	25.0	25.0	25.0	25.0	25.0	25.0	25.0	25.0	25.0	25.0
Indicator value	20.4	20.8	20.9	20.9	20.7	20.6	21.4	22.0	21.9	22.2	22.4	23.0

Licensee Comments: none

Drill/Exercise Performance



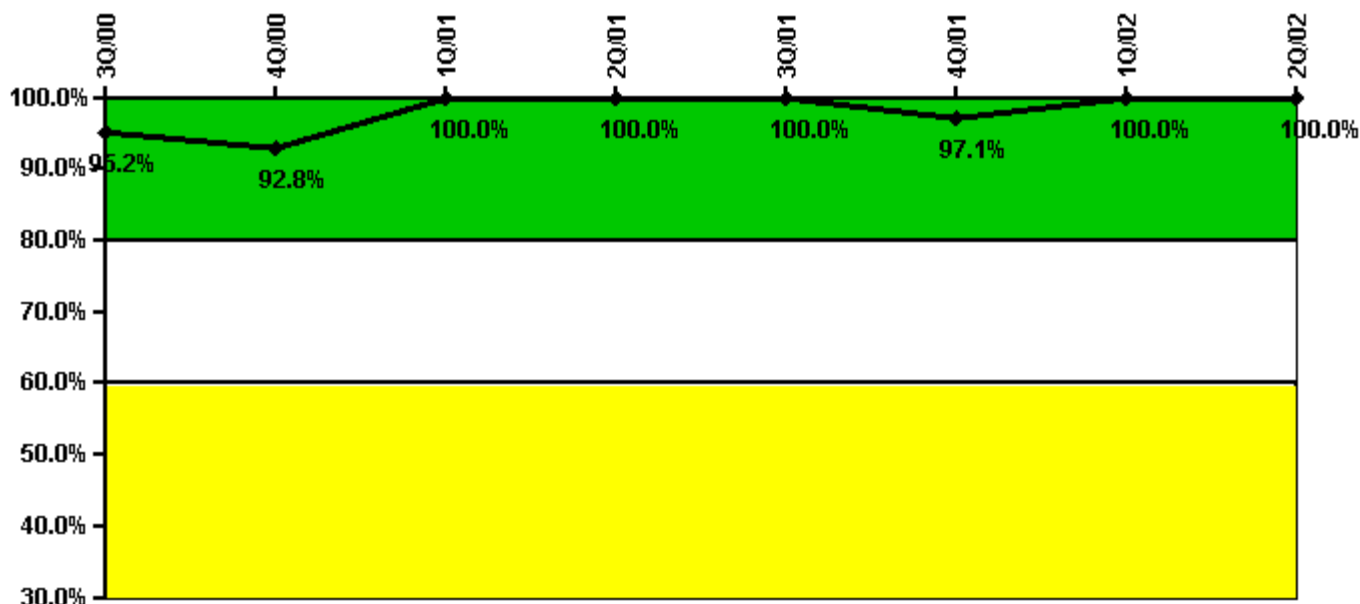
Thresholds: White < 90.0% Yellow < 70.0%

Notes

Drill/Exercise Performance	3Q/00	4Q/00	1Q/01	2Q/01	3Q/01	4Q/01	1Q/02	2Q/02
Successful opportunities	16.0	0	10.0	6.0	12.0	0	14.0	31.0
Total opportunities	18.0	0	10.0	6.0	13.0	0	14.0	35.0
Indicator value	92.6%	92.5%	92.5%	91.4%	91.0%	90.9%	92.5%	92.7%

Licensee Comments: none

ERO Drill Participation



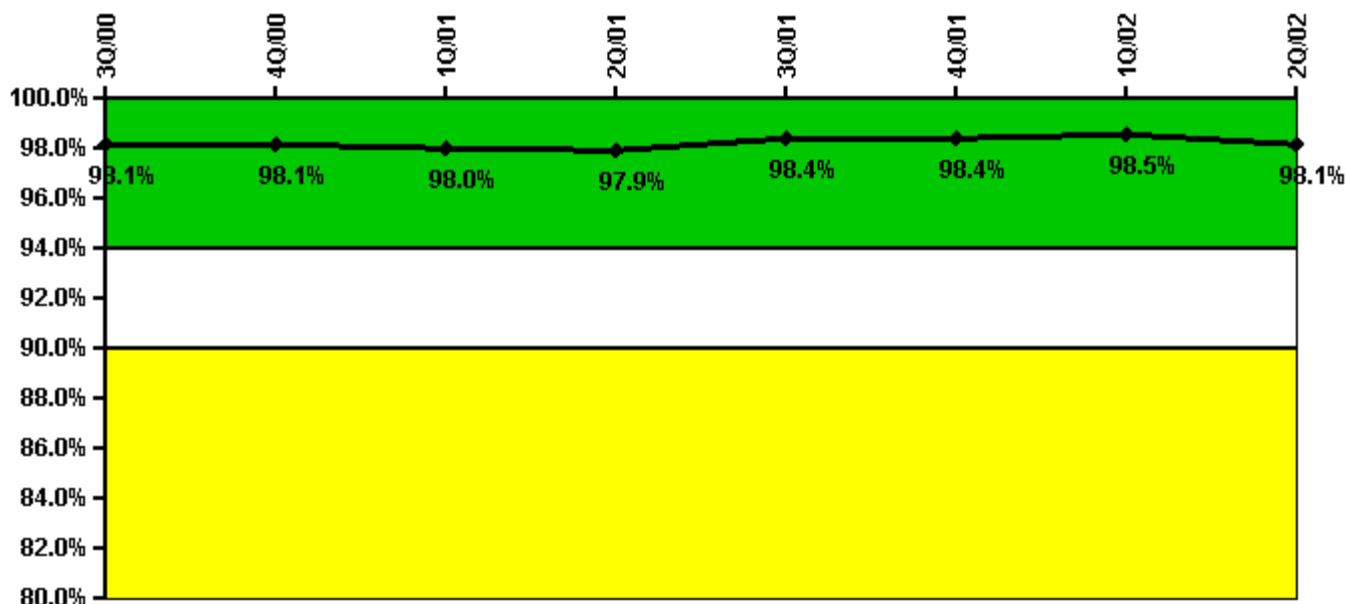
Thresholds: White < 80.0% Yellow < 60.0%

Notes

ERO Drill Participation	3Q/00	4Q/00	1Q/01	2Q/01	3Q/01	4Q/01	1Q/02	2Q/02
Participating Key personnel	79.0	77.0	43.0	44.0	33.0	33.0	34.0	33.0
Total Key personnel	83.0	83.0	43.0	44.0	33.0	34.0	34.0	33.0
Indicator value	95.2%	92.8%	100.0%	100.0%	100.0%	97.1%	100.0%	100.0%

Licensee Comments: none

Alert & Notification System



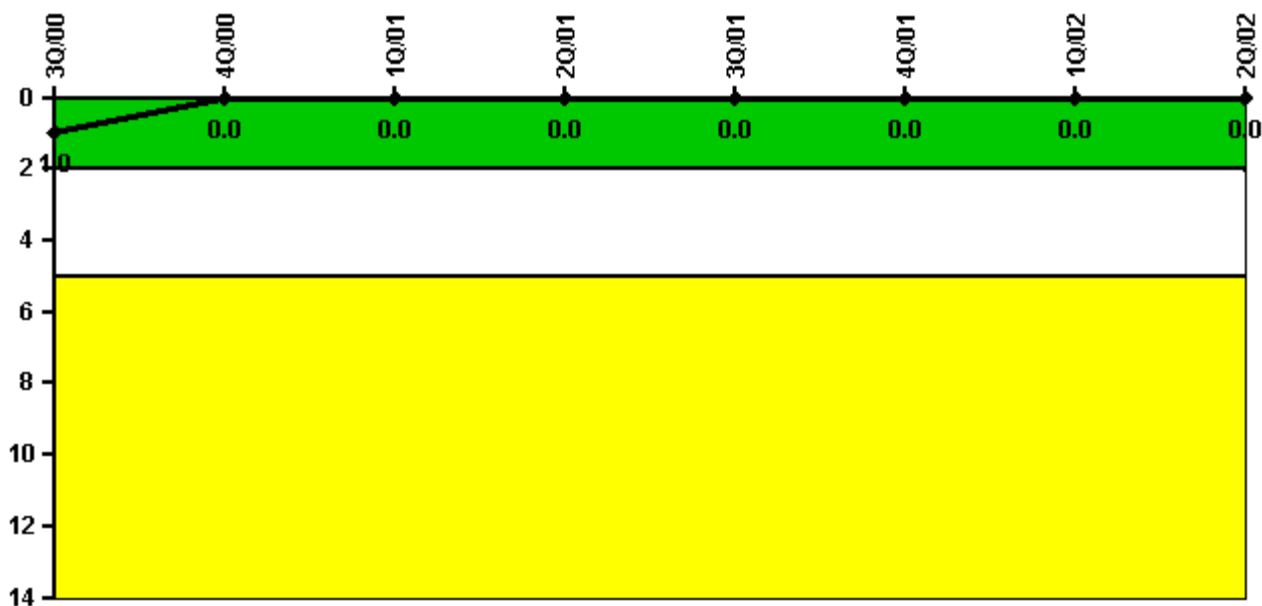
Thresholds: White < 94.0% Yellow < 90.0%

Notes

Alert & Notification System	3Q/00	4Q/00	1Q/01	2Q/01	3Q/01	4Q/01	1Q/02	2Q/02
Successful siren-tests	283	290	249	288	248	331	250	284
Total sirens-tests	294	294	252	294	252	336	252	294
Indicator value	98.1%	98.1%	98.0%	97.9%	98.4%	98.4%	98.5%	98.1%

Licensee Comments: none

Occupational Exposure Control Effectiveness



Thresholds: White > 2.0 Yellow > 5.0

Notes

Occupational Exposure Control Effectiveness	3Q/00	4Q/00	1Q/01	2Q/01	3Q/01	4Q/01	1Q/02	2Q/02
High radiation area occurrences	0	0	0	0	0	0	0	0
Very high radiation area occurrences	0	0	0	0	0	0	0	0
Unintended exposure occurrences	0	0	0	0	0	0	0	0
Indicator value	1	0	0	0	0	0	0	0

Licensee Comments: none

RETS/ODCM Radiological Effluent



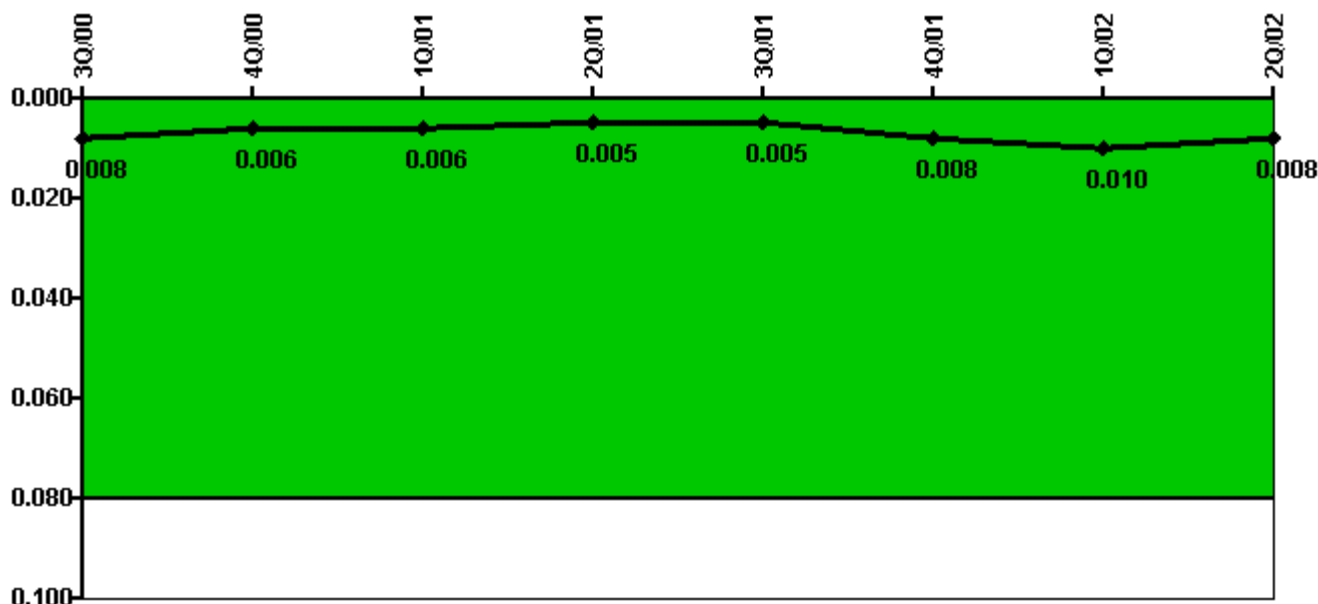
Thresholds: White > 1.0 Yellow > 3.0

Notes

RETS/ODCM Radiological Effluent	3Q/00	4Q/00	1Q/01	2Q/01	3Q/01	4Q/01	1Q/02	2Q/02
RETS/ODCM occurrences	0	0	0	0	0	0	0	0
Indicator value	0	0	0	0	0	0	0	0

Licensee Comments: none

Protected Area Security Performance Index



Thresholds: White > 0.080

Notes

Protected Area Security Performance Index	3Q/00	4Q/00	1Q/01	2Q/01	3Q/01	4Q/01	1Q/02	2Q/02
IDS compensatory hours	23.05	29.52	60.31	17.68	32.66	60.00	51.19	13.10
CCTV compensatory hours	0.8	0	6.9	18.4	4.9	59.0	50.1	5.3
IDS normalization factor	1.95	1.95	1.95	1.95	1.95	1.95	1.95	2.15
CCTV normalization factor	1.5	1.5	1.5	1.5	1.5	1.5	1.5	1.8
Index Value	0.008	0.006	0.006	0.005	0.005	0.008	0.010	0.008

Licensee Comments:

2Q/02: Due to the addition of the ISFSI as a Protected Area the normalization factors have changed for both the IDS and CCTV. Four IDS Zones. Eight CCTV's were added.

Personnel Screening Program



Thresholds: White > 2.0 Yellow > 5.0

Notes

Personnel Screening Program	3Q/00	4Q/00	1Q/01	2Q/01	3Q/01	4Q/01	1Q/02	2Q/02
Program failures	0	0	0	0	0	0	0	0
Indicator value	0	0	0	0	0	0	0	0

Licensee Comments: none

FFD/Personnel Reliability



Thresholds: White > 2.0 Yellow > 5.0

Notes

FFD/Personnel Reliability	3Q/00	4Q/00	1Q/01	2Q/01	3Q/01	4Q/01	1Q/02	2Q/02
Program Failures	0	0	0	0	0	0	0	0
Indicator value	0	0	0	0	0	0	0	0

Licensee Comments: none

▲ [PI Summary](#) | [Inspection Findings Summary](#) | [Reactor Oversight Process](#)

Last Modified: July 31, 2002