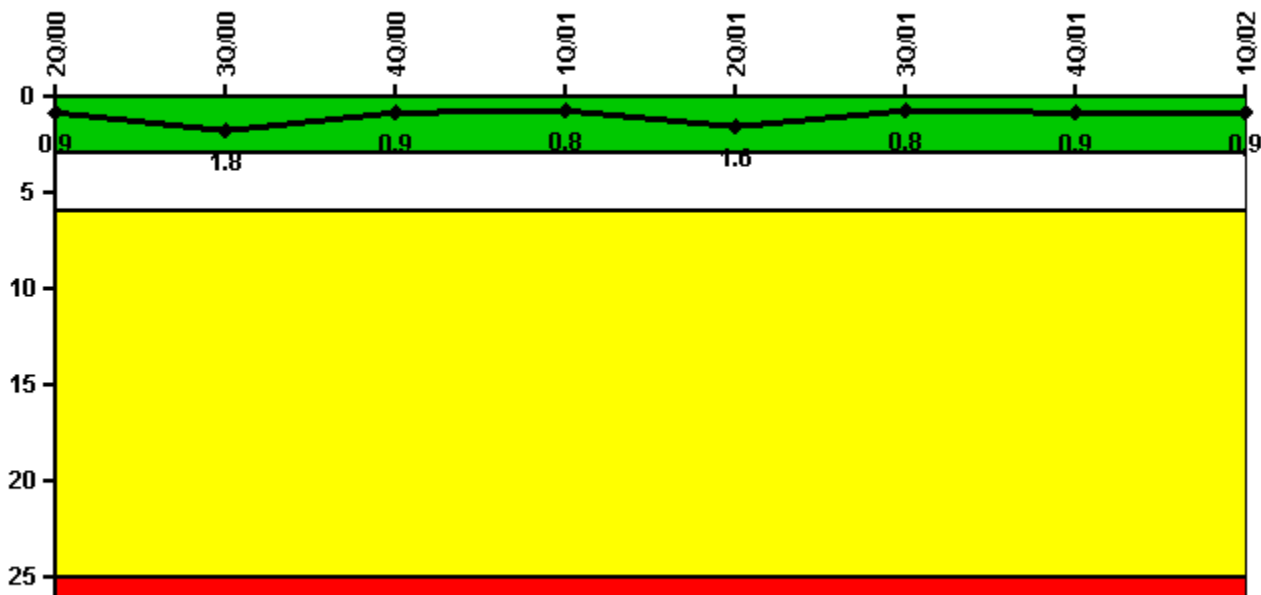


# River Bend 1

## 1Q/2002 Performance Indicators

Licensee's General Comments: none

### Unplanned Scrams per 7000 Critical Hrs



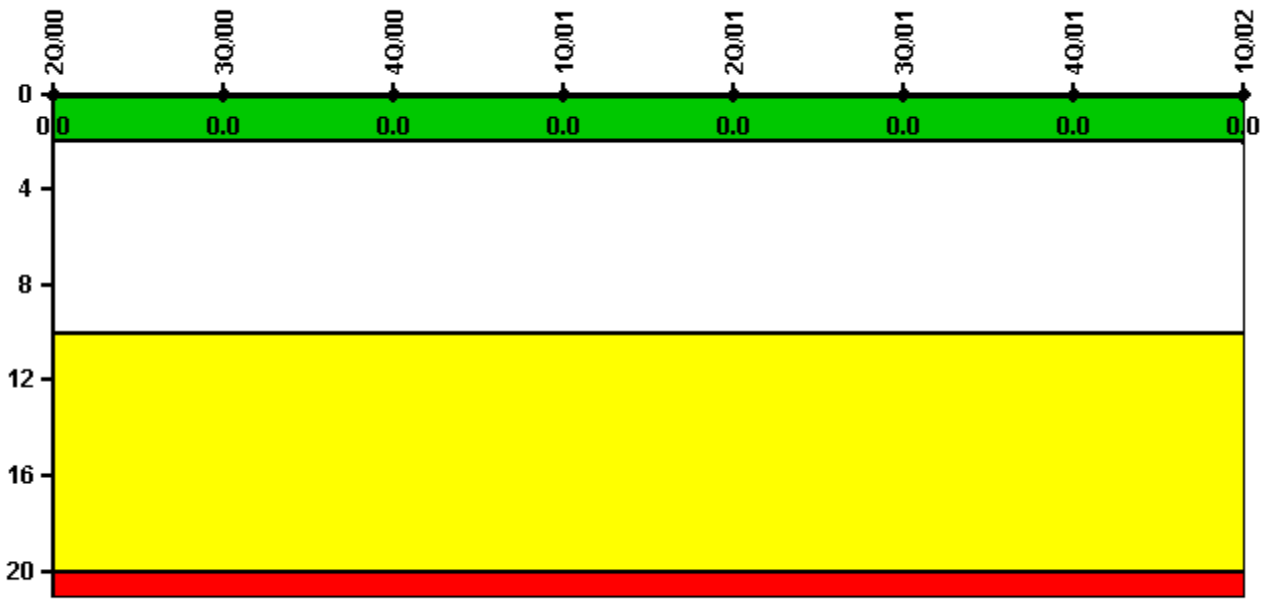
Thresholds: White > 3.0 Yellow > 6.0 Red > 25.0

### Notes

Unplanned Scrams per 7000 Critical Hrs	2Q/00	3Q/00	4Q/00	1Q/01	2Q/01	3Q/01	4Q/01	1Q/02
Unplanned scrams	0	1.0	0	0	1.0	0	0	0
Critical hours	2044.4	2110.4	2209.0	2160.0	2088.2	2036.0	1915.6	2160.0
Indicator value	0.9	1.8	0.9	0.8	1.6	0.8	0.9	0.9

Licensee Comments: none

### Scrams with Loss of Normal Heat Removal



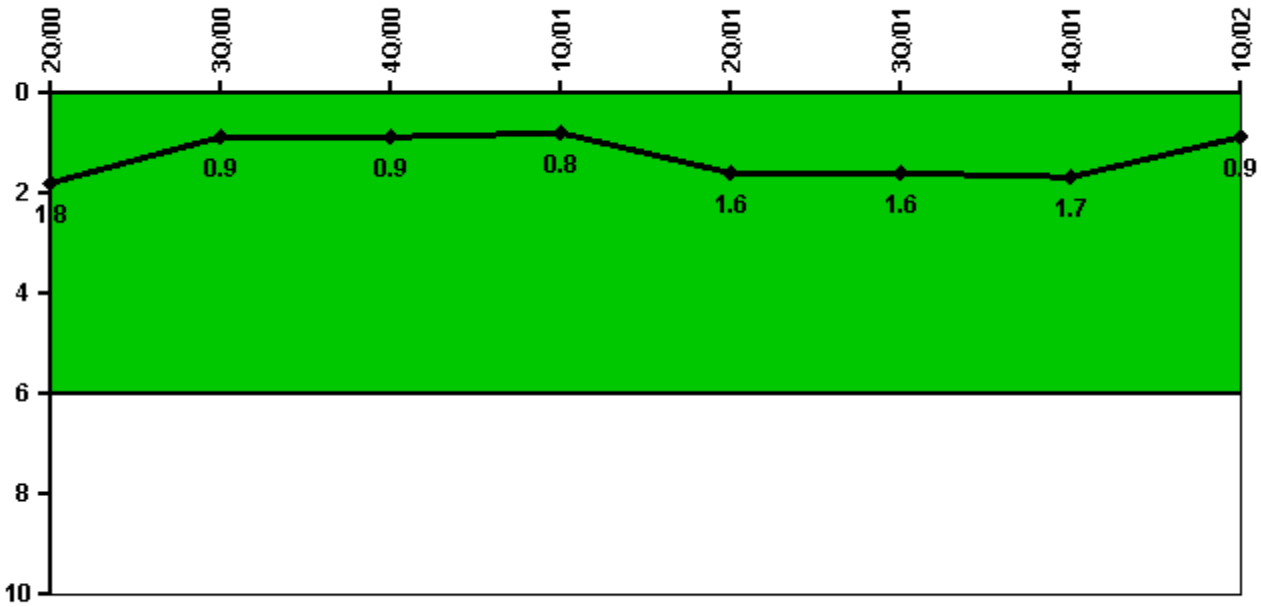
Thresholds: White > 2.0 Yellow > 10.0 Red > 20.0

#### Notes

Scrams with Loss of Normal Heat Removal	2Q/00	3Q/00	4Q/00	1Q/01	2Q/01	3Q/01	4Q/01	1Q/02
Scrams	0	0	0	0	0	0	0	0
Indicator value	0	0	0	0	0	0	0	0

Licensee Comments: none

### Unplanned Power Changes per 7000 Critical Hrs



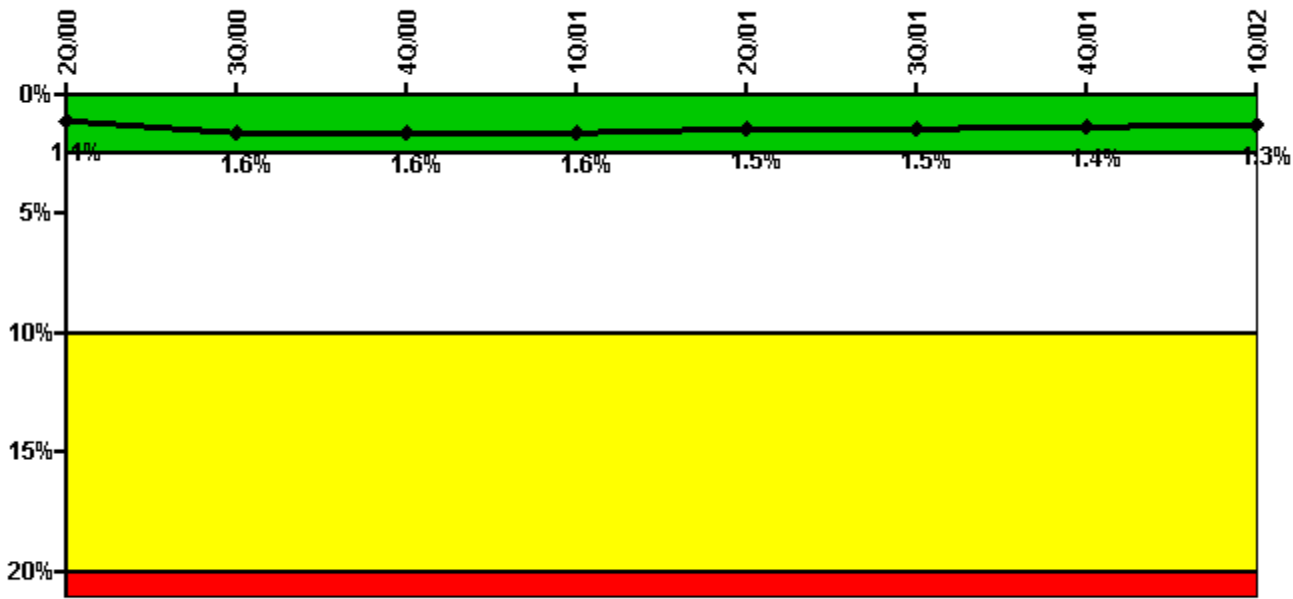
Thresholds: White > 6.0

#### Notes

Unplanned Power Changes per 7000 Critical Hrs	2Q/00	3Q/00	4Q/00	1Q/01	2Q/01	3Q/01	4Q/01	1Q/02
Unplanned power changes	0	0	0	1.0	1.0	0	0	0
Critical hours	2044.4	2110.4	2209.0	2160.0	2088.2	2036.0	1915.6	2160.0
Indicator value	1.8	0.9	0.9	0.8	1.6	1.6	1.7	0.9

Licensee Comments: none

### Safety System Unavailability, Emergency AC Power, >2EDG



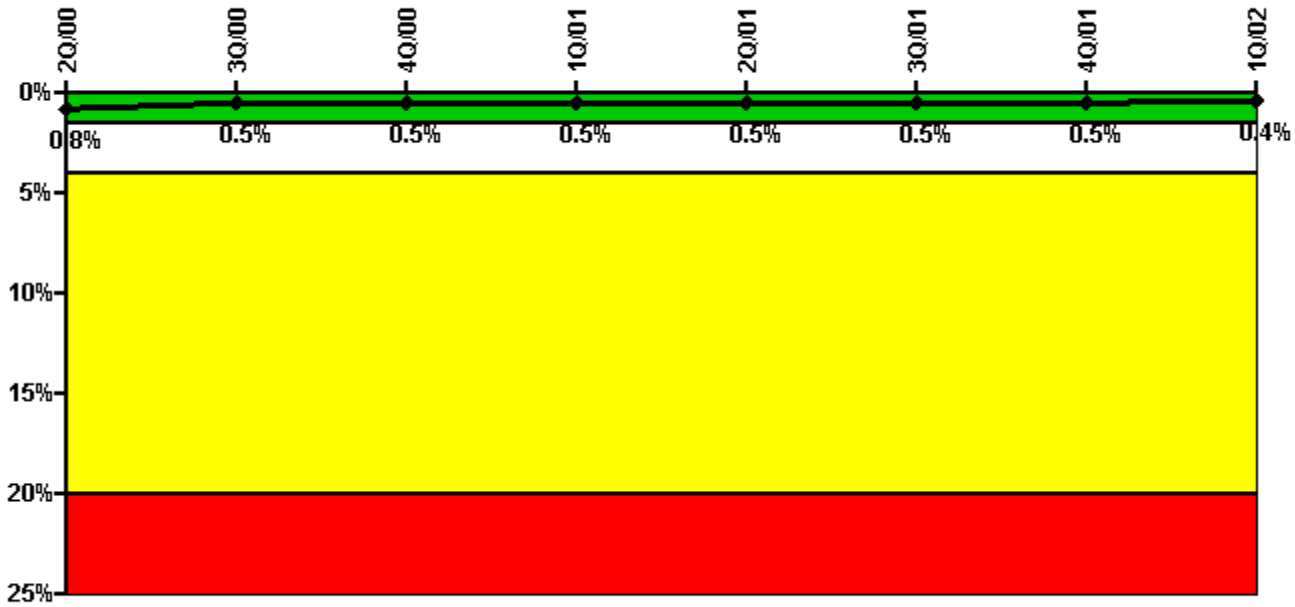
Thresholds: White > 2.5% Yellow > 10.0% Red > 20.0%

#### Notes

Safety System Unavailability, Emergency AC Power, >2EDG	2Q/00	3Q/00	4Q/00	1Q/01	2Q/01	3Q/01	4Q/01	1Q/02
<b>Train 1</b>								
Planned unavailable hours	43.30	23.10	24.00	11.20	4.30	6.60	11.20	3.23
Unplanned unavailable hours	1.00	7.60	3.30	0	0	0	11.92	7.40
Fault exposure hours	0	0	0	0	0	0	0	0
Effective Reset hours	0	0	0	0	0	0	0	0
Required hours	2183.00	2208.00	2209.00	2160.00	2183.00	2208.00	2209.00	2160.00
<b>Train 2</b>								
Planned unavailable hours	23.80	4.50	12.30	13.30	8.70	19.50	1.96	5.26
Unplanned unavailable hours	0	9.70	0	12.90	0	0	0	0
Fault exposure hours	0	419.50	0	0	0	0	0	0
Effective Reset hours	0	0	0	0	0	0	0	0
Required hours	2183.00	2208.00	2209.00	2160.00	2183.00	2208.00	2209.00	2160.00
<b>Train 3</b>								
Planned unavailable hours	10.40	19.40	1.30	7.50	0.70	0.80	0.67	0.82
Unplanned unavailable hours	0	0	0	0	0	0	0.23	0
Fault exposure hours	0	0	0	0	0	0	0	0
Effective Reset hours	0	0	0	0	0	0	0	0
Required hours	2183.00	2208.00	2209.00	2160.00	2183.00	2208.00	2209.00	2160.00
<b>Indicator value</b>	<b>1.1%</b>	<b>1.6%</b>	<b>1.6%</b>	<b>1.6%</b>	<b>1.5%</b>	<b>1.5%</b>	<b>1.4%</b>	<b>1.3%</b>

Licensee Comments: none

### Safety System Unavailability, High Pressure Injection System (HPCS)



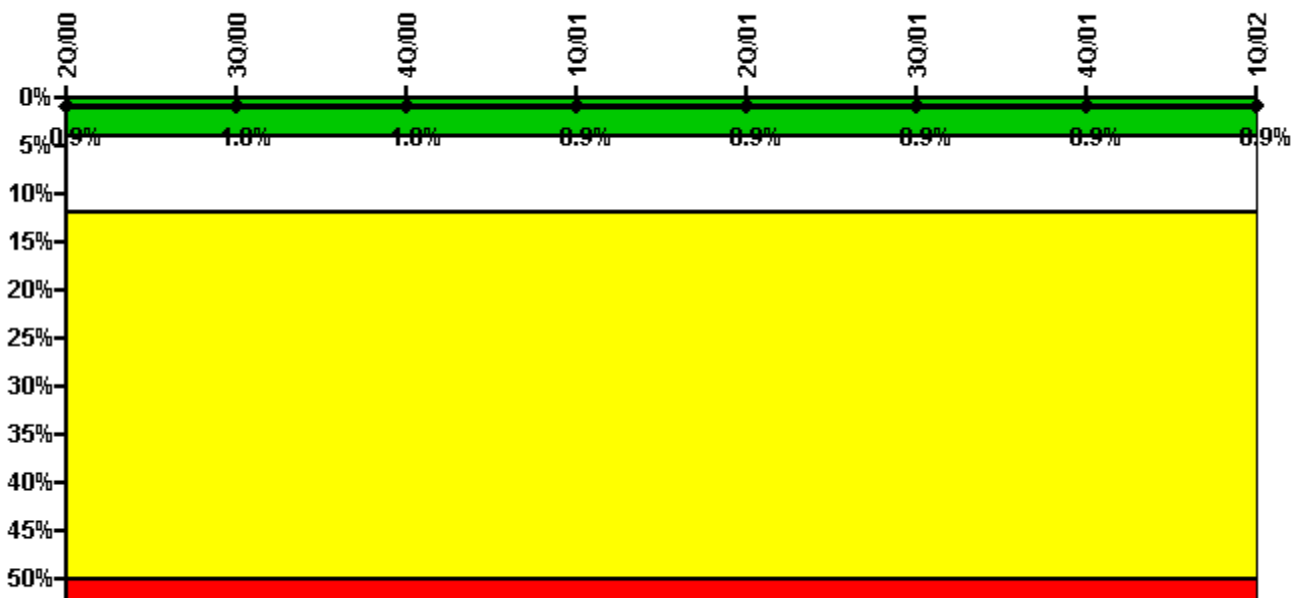
Thresholds: White > 1.5% Yellow > 4.0% Red > 20.0%

#### Notes

Safety System Unavailability, High Pressure Injection System (HPCS)	2Q/00	3Q/00	4Q/00	1Q/01	2Q/01	3Q/01	4Q/01	1Q/02
<b>Train 1</b>								
Planned unavailable hours	0	1.50	9.90	3.30	3.50	0	22.48	0
Unplanned unavailable hours	0	0	0	0	0	0	0	0
Fault exposure hours	0	0	0	0	0	0	0	0
Effective Reset hours	0	0	0	0	0	0	0	0
Required hours	2044.37	2110.38	2209.00	2160.00	2088.17	2036.00	1915.60	2160.00
Indicator value	0.8%	0.5%	0.5%	0.5%	0.5%	0.5%	0.5%	0.4%

Licensee Comments: none

### Safety System Unavailability, Heat Removal System (RCIC)



Thresholds: White > 4.0% Yellow > 12.0% Red > 50.0%

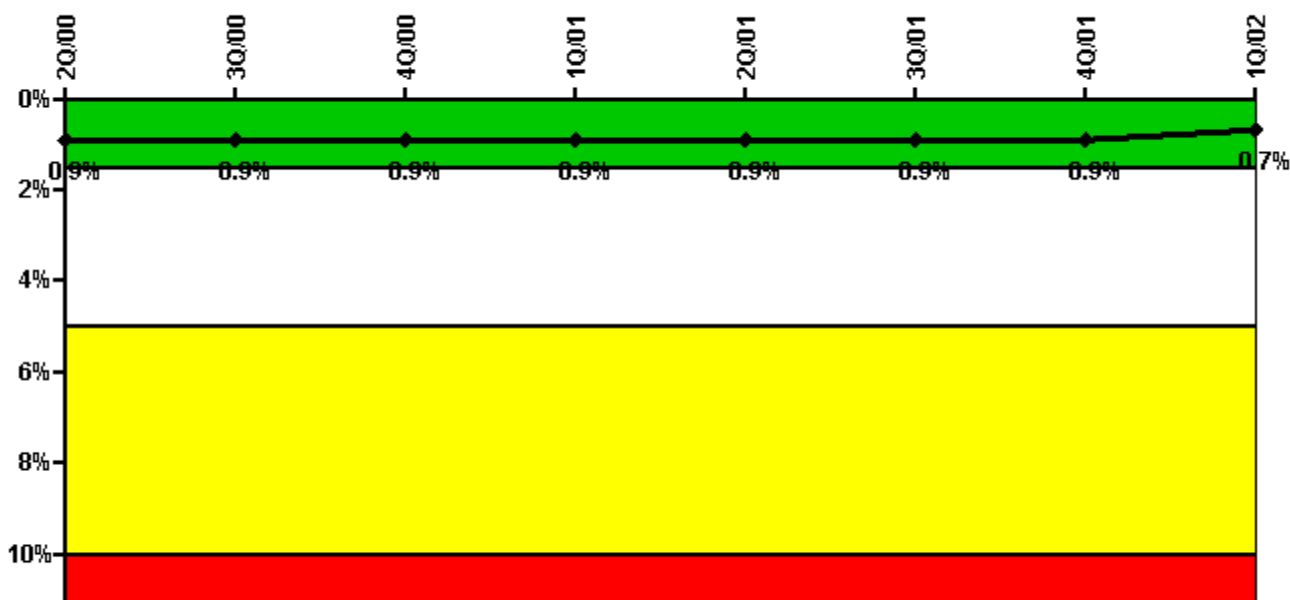
#### Notes

Safety System Unavailability, Heat Removal System (RCIC)	2Q/00	3Q/00	4Q/00	1Q/01	2Q/01	3Q/01	4Q/01	1Q/02
<b>Train 1</b>								
Planned unavailable hours	23.40	49.00	6.20	1.10	8.20	12.50	2.40	33.92
Unplanned unavailable hours	5.00	4.40	0	0	0	0	2.83	0
Fault exposure hours	0	0	0	0	0	0	0	0
Effective Reset hours	0	0	0	0	0	0	0	0
Required hours	2044.37	2110.38	2209.00	2160.00	2088.17	2036.00	1915.60	2160.00
Indicator value	0.9%	1.0%	1.0%	0.9%	0.9%	0.9%	0.9%	0.9%

#### Licensee Comments:

4Q/01: 4Q/01: A review of the unavailability hours for the Heat Removal System identified a need to revise previously submitted data. 0.45 hours of unplanned unavailability was added. This addition does not change the indicator color.

### Safety System Unavailability, Residual Heat Removal System



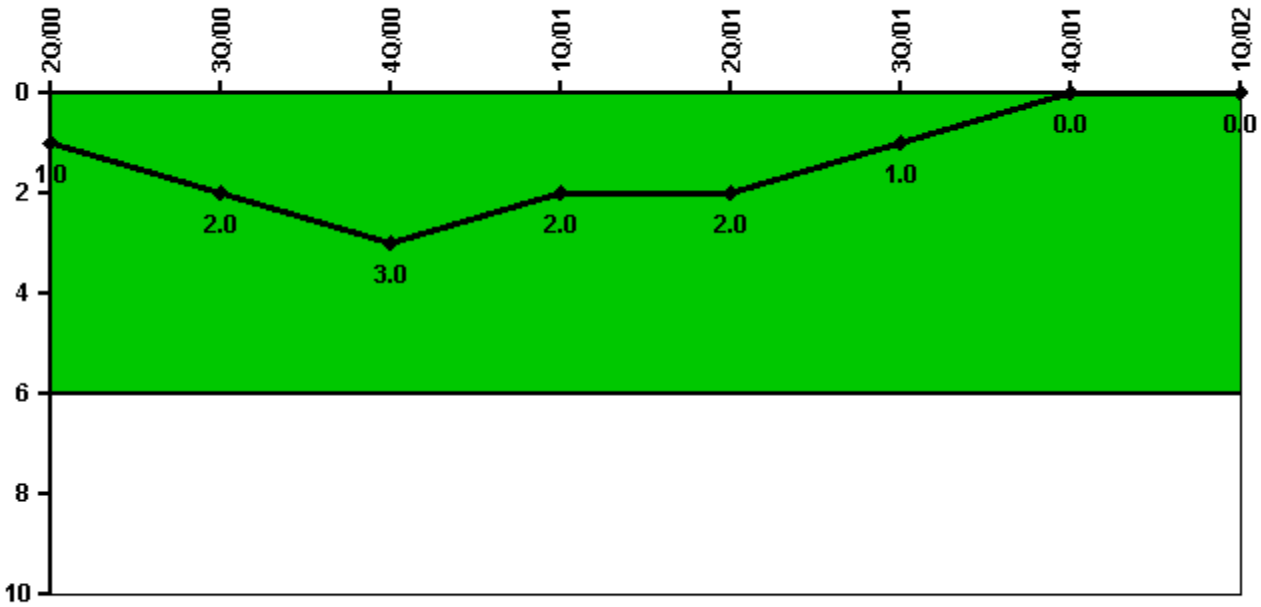
Thresholds: White > 1.5% Yellow > 5.0% Red > 10.0%

#### Notes

Safety System Unavailability, Residual Heat Removal System	2Q/00	3Q/00	4Q/00	1Q/01	2Q/01	3Q/01	4Q/01	1Q/02
<b>Train 1</b>								
Planned unavailable hours	40.40	4.10	4.00	5.60	2.90	4.40	31.15	1.42
Unplanned unavailable hours	0	0	0	0	0	0	0	0
Fault exposure hours	0	0	0	0	0	0	0	0
Effective Reset hours	0	0	0	0	0	0	0	0
Required hours	2183.00	2208.00	2209.00	2160.00	2183.00	2208.00	2209.00	2160.00
<b>Train 2</b>								
Planned unavailable hours	5.80	7.20	2.90	1.90	0	4.50	1.67	0.53
Unplanned unavailable hours	0	0	0	0	0	0	0	0
Fault exposure hours	0	0	0	0	0	0	0	0
Effective Reset hours	0	0	0	0	0	0	0	0
Required hours	2183.00	2208.00	2209.00	2160.00	2183.00	2208.00	2209.00	2160.00
Indicator value	0.9%	0.9%	0.9%	0.9%	0.9%	0.9%	0.9%	0.7%

Licensee Comments: none

### Safety System Functional Failures (BWR)



Thresholds: White > 6.0

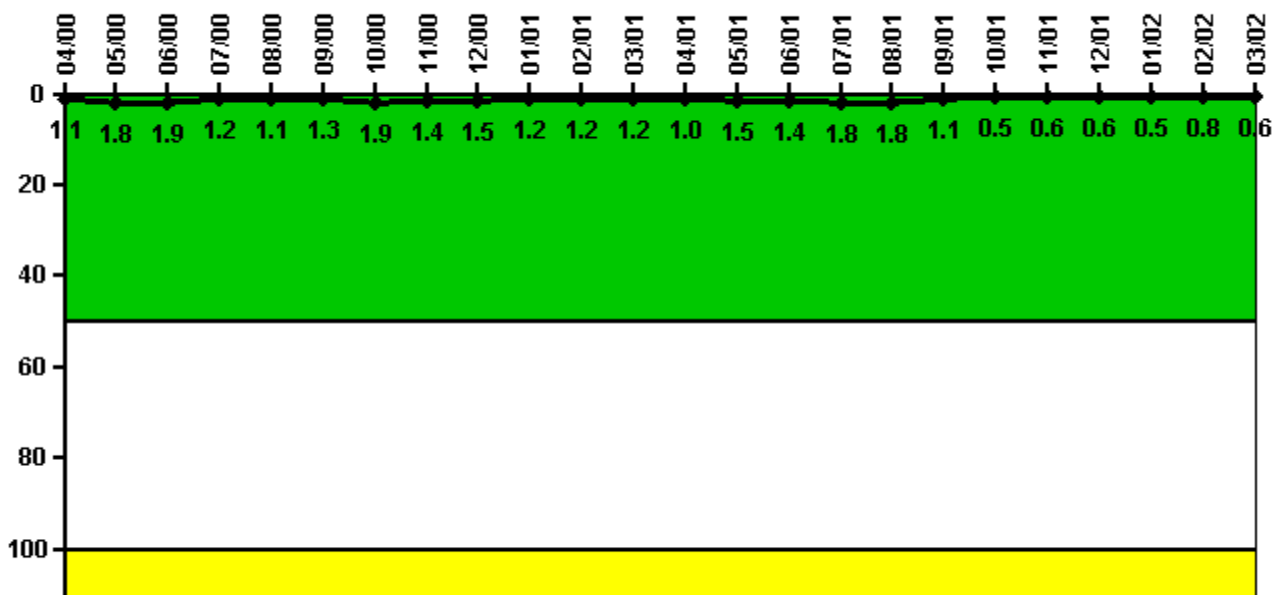
#### Notes

Safety System Functional Failures (BWR)	2Q/00	3Q/00	4Q/00	1Q/01	2Q/01	3Q/01	4Q/01	1Q/02
Safety System Functional Failures	0	1	1	0	0	0	0	0
Indicator value	1	2	3	2	2	1	0	0

Licensee Comments: none



### Reactor Coolant System Activity



Thresholds: White > 50.0 Yellow > 100.0

#### Notes

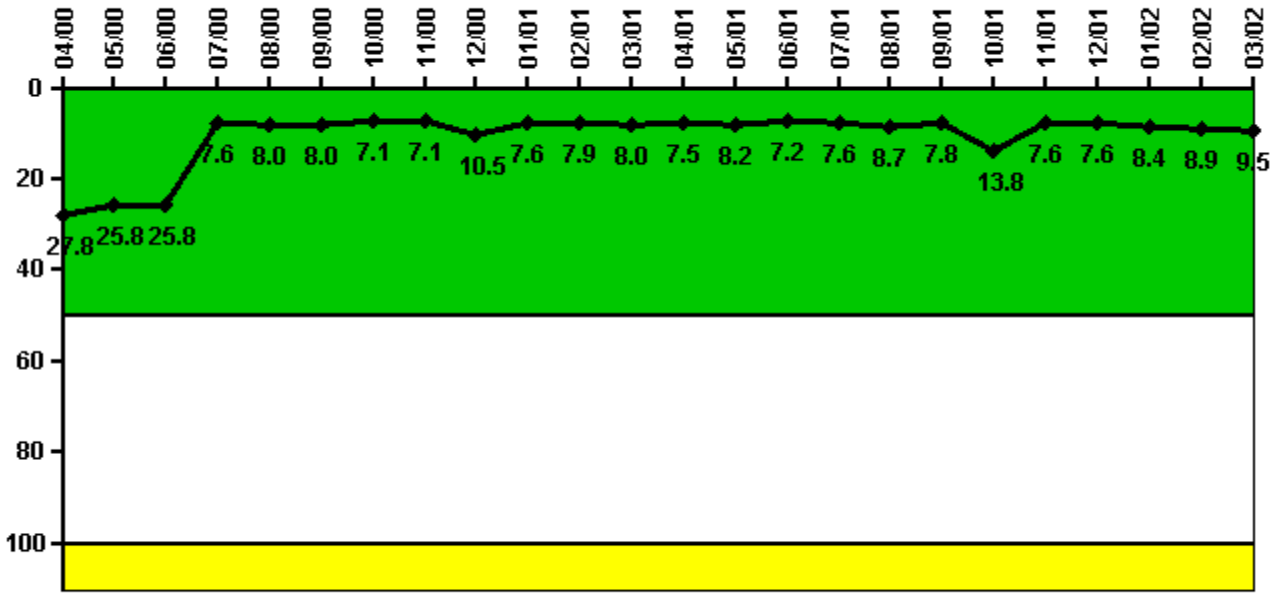
Reactor Coolant System Activity	4/00	5/00	6/00	7/00	8/00	9/00	10/00	11/00	12/00	1/01	2/01	3/01
Maximum activity	0.002250	0.003500	0.003700	0.002470	0.002270	0.002600	0.003780	0.002780	0.002950	0.002420	0.002470	0.002450
Technical specification limit	0.2	0.2	0.2	0.2	0.2	0.2	0.2	0.2	0.2	0.2	0.2	0.2
Indicator value	1.1	1.8	1.9	1.2	1.1	1.3	1.9	1.4	1.5	1.2	1.2	1.2

Reactor Coolant System Activity	4/01	5/01	6/01	7/01	8/01	9/01	10/01	11/01	12/01	1/02	2/02	3/02
Maximum activity	0.002090	0.002950	0.002800	0.003550	0.003690	0.002270	0.000960	0.001290	0.001220	0.001040	0.001660	0.001150
Technical specification limit	0.2	0.2	0.2	0.2	0.2	0.2	0.2	0.2	0.2	0.2	0.2	0.2
Indicator value	1.0	1.5	1.4	1.8	1.8	1.1	0.5	0.6	0.6	0.5	0.8	0.6

Licensee Comments: none

### Reactor Coolant System Leakage



Thresholds: White > 50.0 Yellow > 100.0

#### Notes

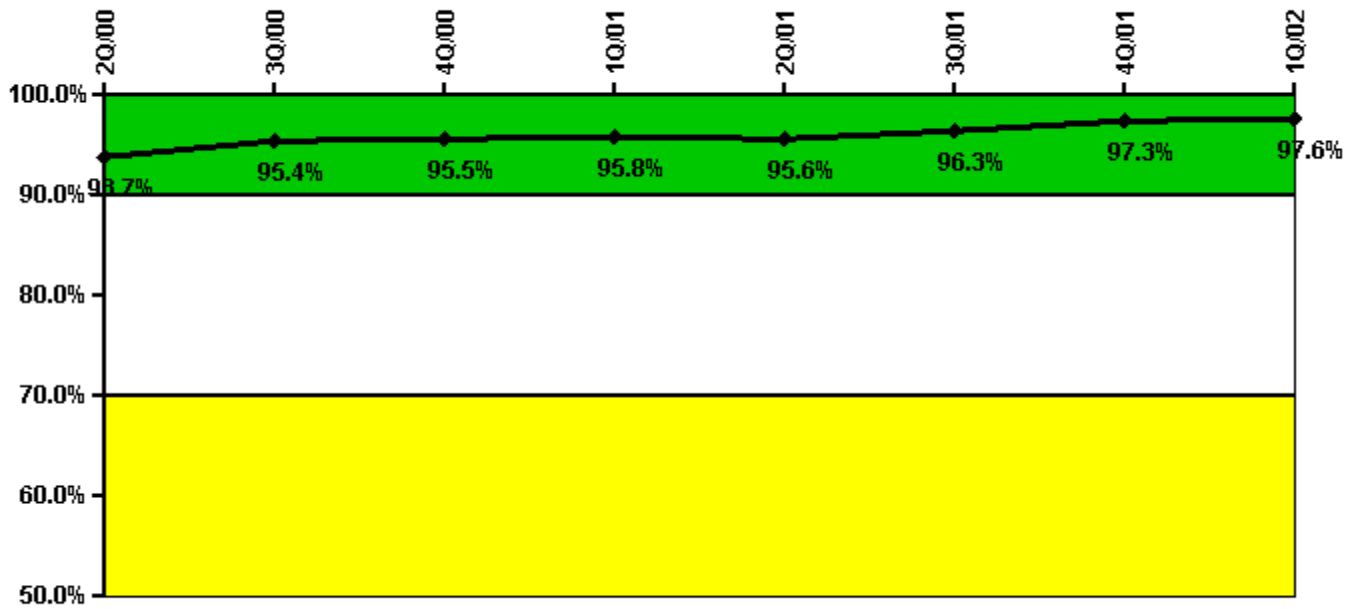
Reactor Coolant System Leakage	4/00	5/00	6/00	7/00	8/00	9/00	10/00	11/00	12/00	1/01	2/01	3/01
Maximum leakage	8.340	7.750	7.750	2.290	2.410	2.400	2.130	2.130	3.150	2.290	2.360	2.410
Technical specification limit	30.0	30.0	30.0	30.0	30.0	30.0	30.0	30.0	30.0	30.0	30.0	30.0
Indicator value	27.8	25.8	25.8	7.6	8.0	8.0	7.1	7.1	10.5	7.6	7.9	8.0

Reactor Coolant System Leakage	4/01	5/01	6/01	7/01	8/01	9/01	10/01	11/01	12/01	1/02	2/02	3/02
Maximum leakage	2.250	2.470	2.160	2.280	2.600	2.330	4.150	2.290	2.270	2.530	2.680	2.850
Technical specification limit	30.0	30.0	30.0	30.0	30.0	30.0	30.0	30.0	30.0	30.0	30.0	30.0
Indicator value	7.5	8.2	7.2	7.6	8.7	7.8	13.8	7.6	7.6	8.4	8.9	9.5

Licensee Comments: none

### Drill/Exercise Performance



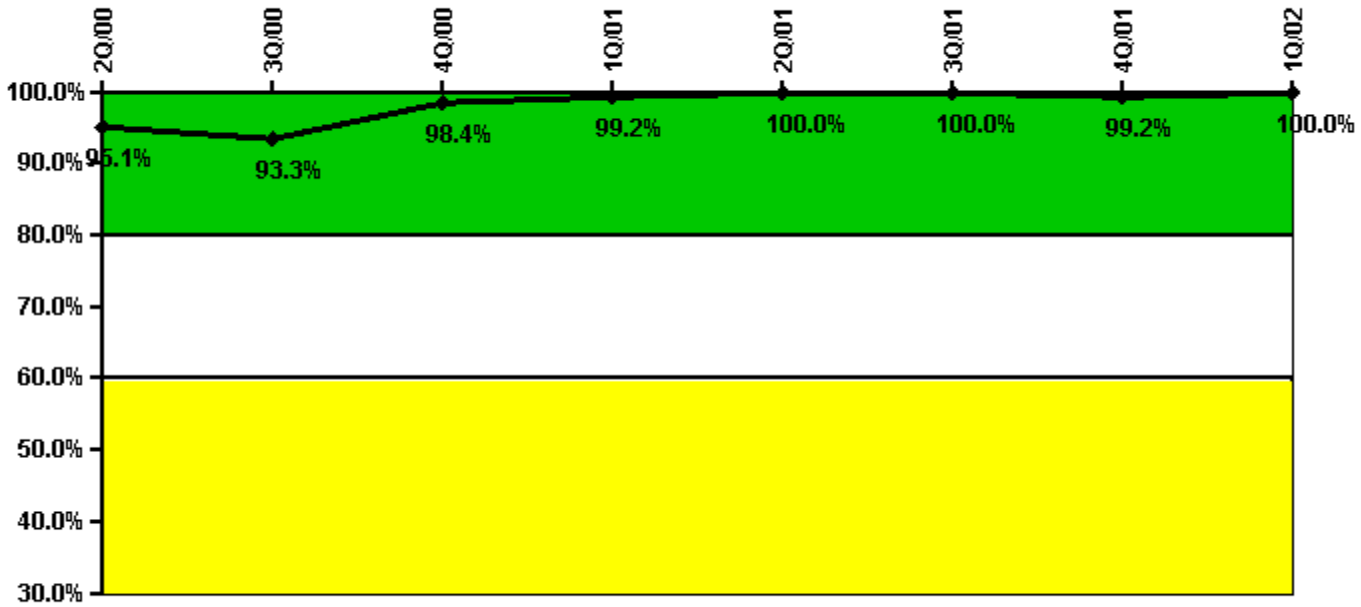
Thresholds: White < 90.0% Yellow < 70.0%

### Notes

Drill/Exercise Performance	2Q/00	3Q/00	4Q/00	1Q/01	2Q/01	3Q/01	4Q/01	1Q/02
Successful opportunities	22.0	17.0	15.0	13.0	18.0	10.0	8.0	19.0
Total opportunities	22.0	17.0	17.0	13.0	19.0	10.0	8.0	19.0
Indicator value	93.7%	95.4%	95.5%	95.8%	95.6%	96.3%	97.3%	97.6%

Licensee Comments: none

### ERO Drill Participation



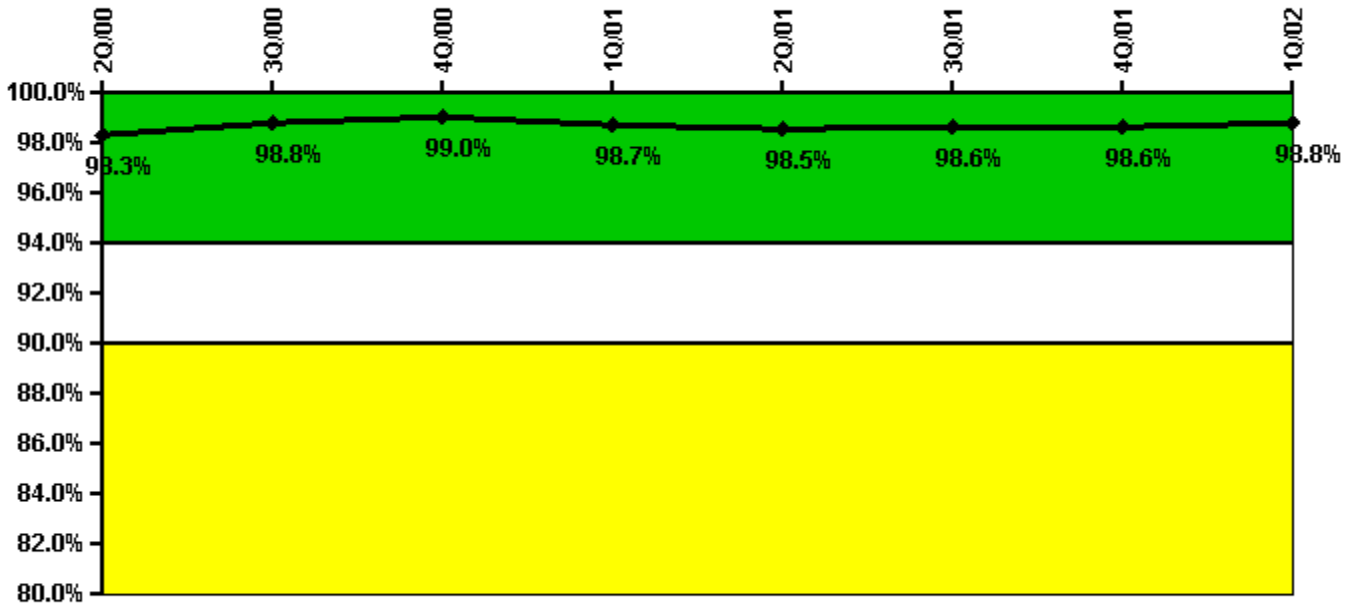
Thresholds: White < 80.0% Yellow < 60.0%

#### Notes

ERO Drill Participation	2Q/00	3Q/00	4Q/00	1Q/01	2Q/01	3Q/01	4Q/01	1Q/02
Participating Key personnel	117.0	112.0	122.0	117.0	126.0	123.0	122.0	122.0
Total Key personnel	123.0	120.0	124.0	118.0	126.0	123.0	123.0	122.0
Indicator value	95.1%	93.3%	98.4%	99.2%	100.0%	100.0%	99.2%	100.0%

Licensee Comments: none

### Alert & Notification System



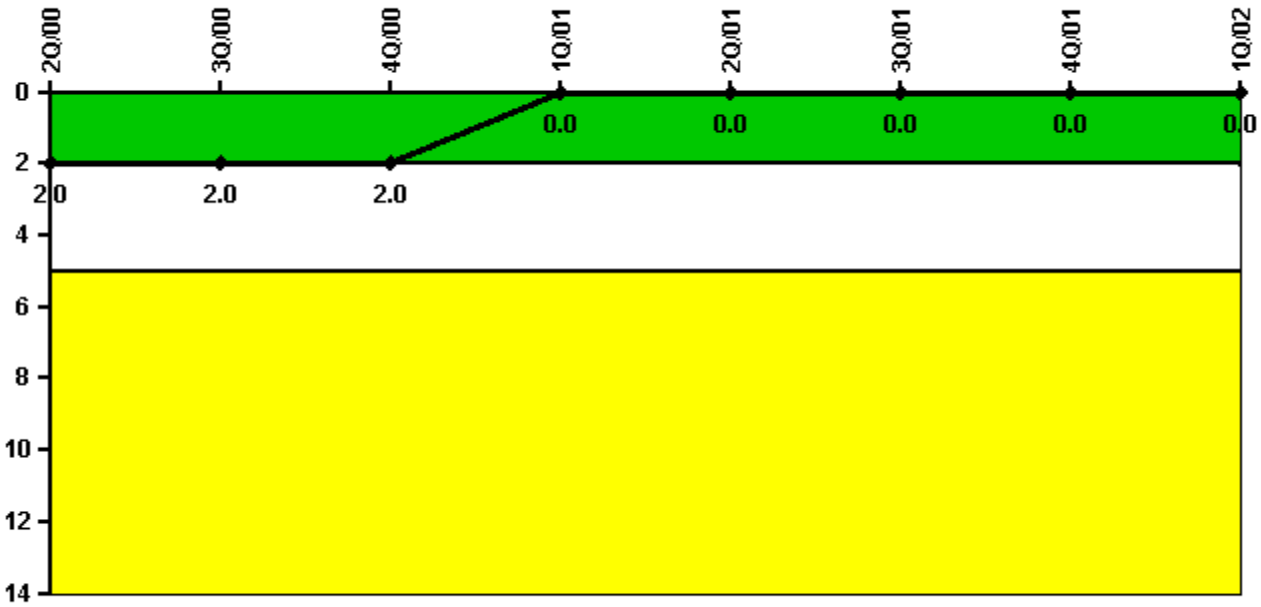
Thresholds: White < 94.0% Yellow < 90.0%

#### Notes

Alert & Notification System	2Q/00	3Q/00	4Q/00	1Q/01	2Q/01	3Q/01	4Q/01	1Q/02
Successful siren-tests	923	1195	918	913	1189	1107	1191	1109
Total sirens-tests	930	1209	930	930	1209	1116	1209	1116
Indicator value	98.3%	98.8%	99.0%	98.7%	98.5%	98.6%	98.6%	98.8%

Licensee Comments: none

### Occupational Exposure Control Effectiveness



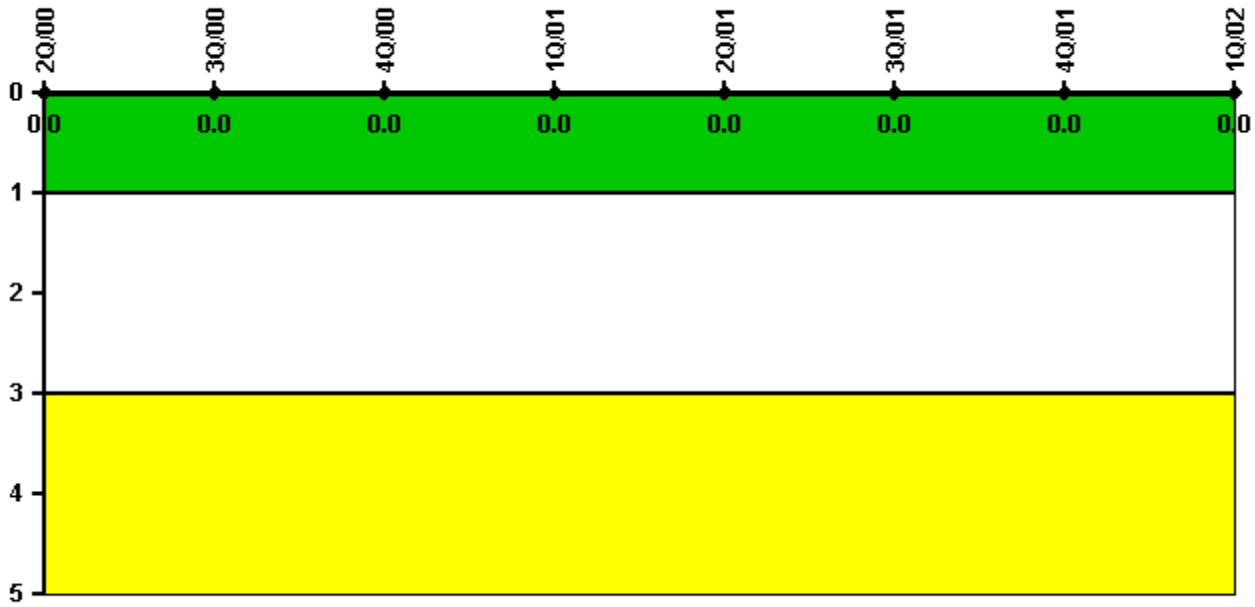
Thresholds: White > 2.0 Yellow > 5.0

#### Notes

Occupational Exposure Control Effectiveness	2Q/00	3Q/00	4Q/00	1Q/01	2Q/01	3Q/01	4Q/01	1Q/02
High radiation area occurrences	0	0	0	0	0	0	0	0
Very high radiation area occurrences	0	0	0	0	0	0	0	0
Unintended exposure occurrences	0	0	0	0	0	0	0	0
Indicator value	2	2	2	0	0	0	0	0

Licensee Comments: none

### RETS/ODCM Radiological Effluent



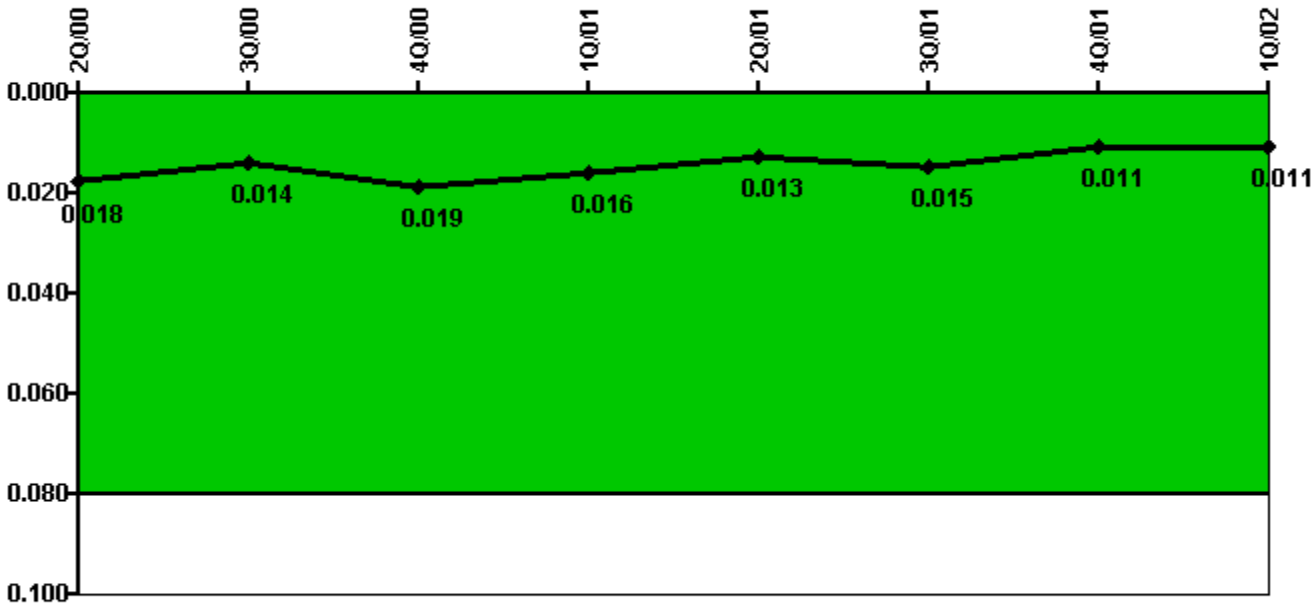
Thresholds: White > 1.0 Yellow > 3.0

#### Notes

RETS/ODCM Radiological Effluent	2Q/00	3Q/00	4Q/00	1Q/01	2Q/01	3Q/01	4Q/01	1Q/02
RETS/ODCM occurrences	0	0	0	0	0	0	0	0
Indicator value	0	0	0	0	0	0	0	0

Licensee Comments: none

### Protected Area Security Performance Index



Thresholds: White > 0.080

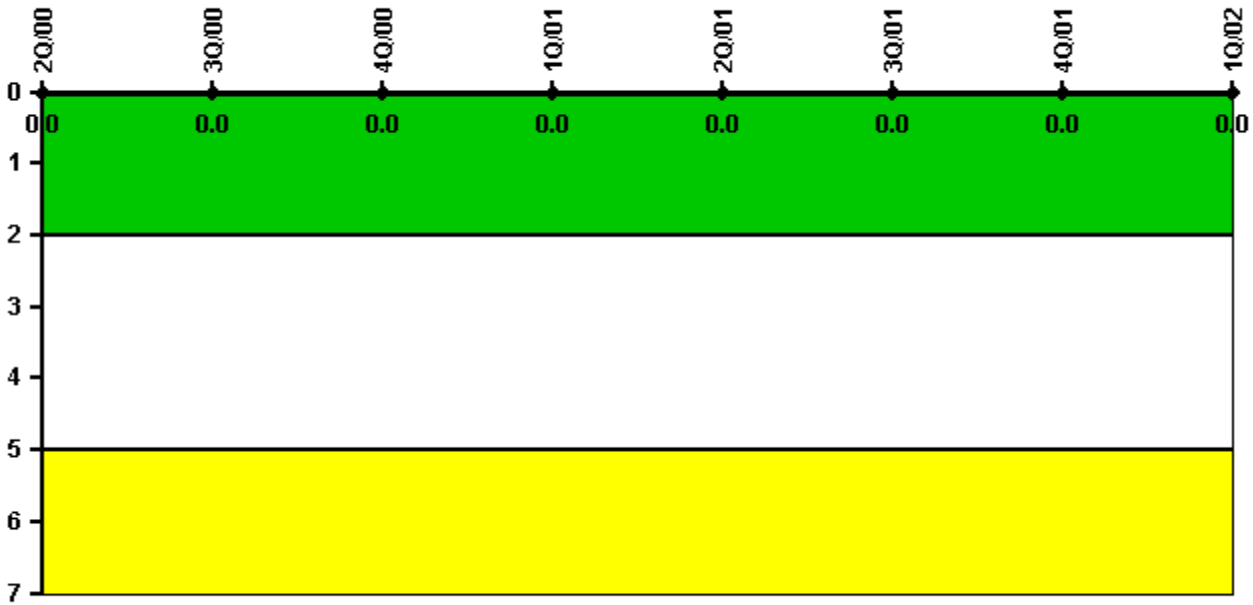
#### Notes

Protected Area Security Performance Index	2Q/00	3Q/00	4Q/00	1Q/01	2Q/01	3Q/01	4Q/01	1Q/02
IDS compensatory hours	49.82	74.08	19.50	29.67	10.28	91.72	34.42	44.40
CCTV compensatory hours	26.6	13.1	90.6	23.2	6.4	22.7	17.8	14.3
IDS normalization factor	1.30	1.30	1.30	1.30	1.30	1.30	1.30	1.30
CCTV normalization factor	1.0	1.0	1.0	1.0	1.0	1.0	1.0	1.0
Index Value	0.018	0.014	0.019	0.016	0.013	0.015	0.011	0.011

Licensee Comments: none



### Personnel Screening Program



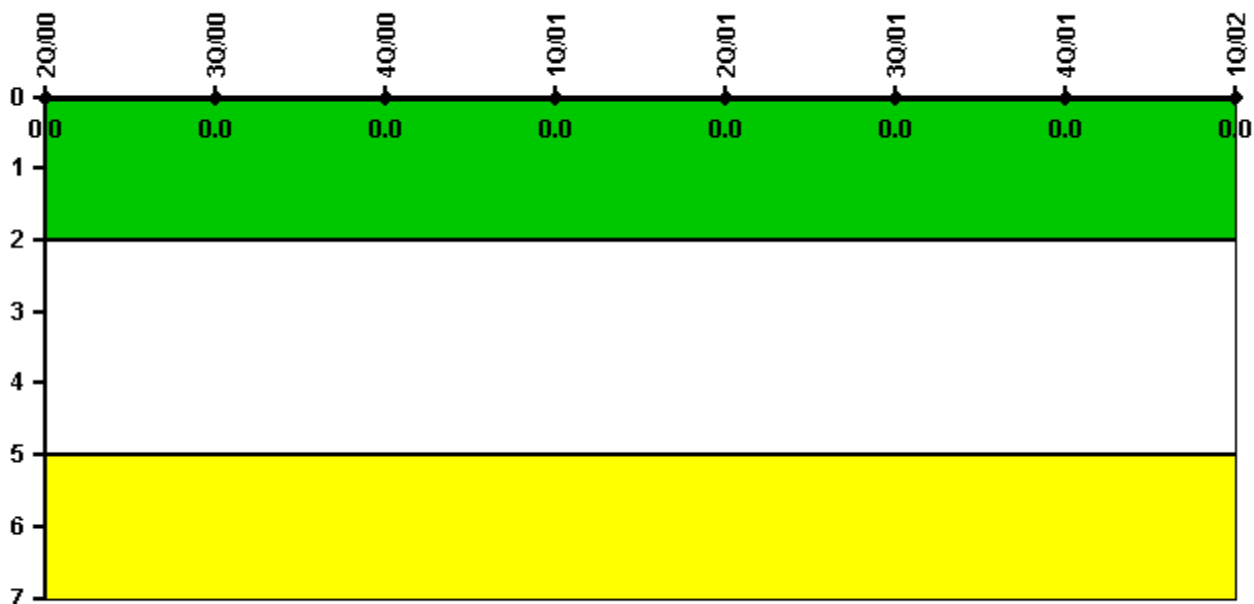
Thresholds: White > 2.0 Yellow > 5.0

#### Notes

Personnel Screening Program	2Q/00	3Q/00	4Q/00	1Q/01	2Q/01	3Q/01	4Q/01	1Q/02
Program failures	0	0	0	0	0	0	0	0
Indicator value	0	0	0	0	0	0	0	0

Licensee Comments: none

### FFD/Personnel Reliability



Thresholds: White > 2.0 Yellow > 5.0

#### Notes

FFD/Personnel Reliability	2Q/00	3Q/00	4Q/00	1Q/01	2Q/01	3Q/01	4Q/01	1Q/02
Program Failures	0	0	0	0	0	0	0	0
Indicator value	0	0	0	0	0	0	0	0

Licensee Comments: none

▲ [PI Summary](#) | [Inspection Findings Summary](#) | [Reactor Oversight Process](#)

Last Modified: May 1, 2002