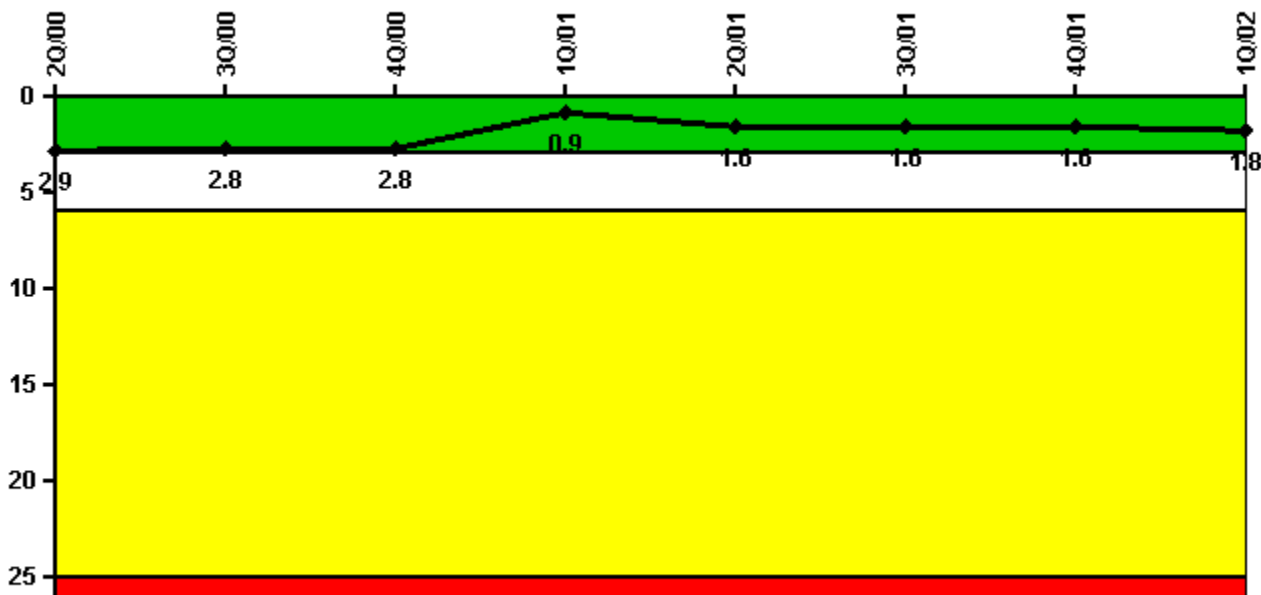


## Millstone 2

### 1Q/2002 Performance Indicators

Licensee's General Comments: none

#### Unplanned Scrams per 7000 Critical Hrs



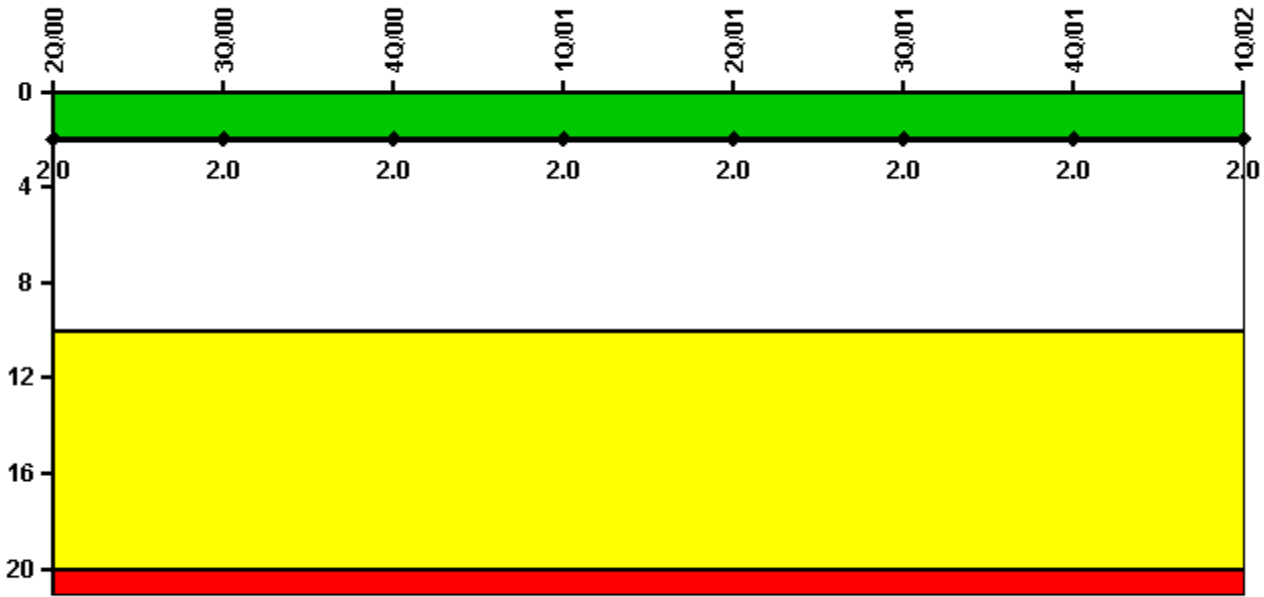
Thresholds: White > 3.0 Yellow > 6.0 Red > 25.0

#### Notes

Unplanned Scrams per 7000 Critical Hrs	2Q/00	3Q/00	4Q/00	1Q/01	2Q/01	3Q/01	4Q/01	1Q/02
Unplanned scrams	1.0	0	0	0	2.0	0	0	0
Critical hours	1264.3	2208.0	2209.0	2160.0	2079.2	2208.0	2209.0	1112.3
Indicator value	2.9	2.8	2.8	0.9	1.6	1.6	1.6	1.8

Licensee Comments: none

### Scrams with Loss of Normal Heat Removal



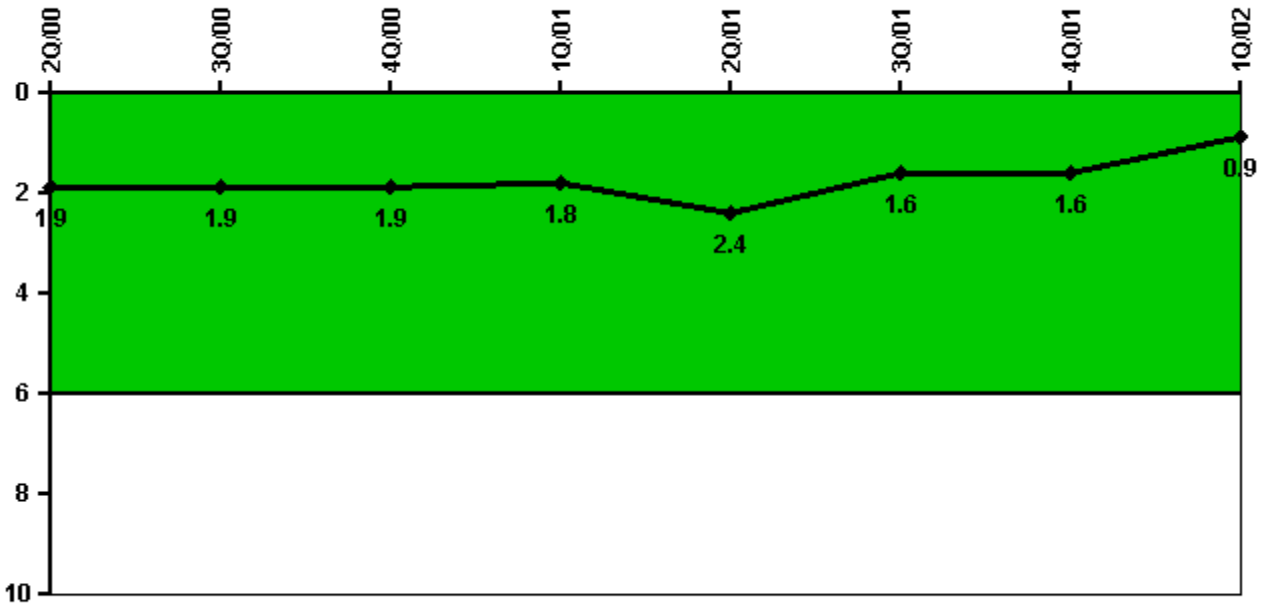
Thresholds: White > 2.0 Yellow > 10.0 Red > 20.0

#### Notes

Scrams with Loss of Normal Heat Removal	2Q/00	3Q/00	4Q/00	1Q/01	2Q/01	3Q/01	4Q/01	1Q/02
Scrams	0	0	0	0	0	0	0	0
Indicator value	2.0	2.0	2.0	2.0	2.0	2.0	2.0	2.0

Licensee Comments: none

### Unplanned Power Changes per 7000 Critical Hrs



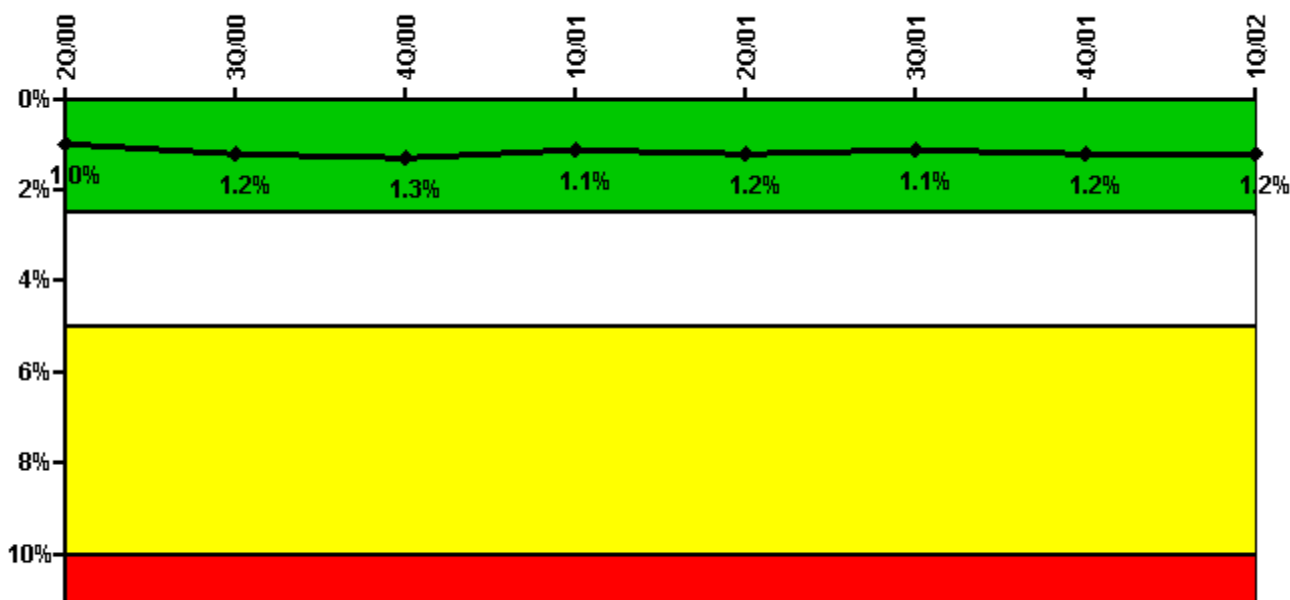
Thresholds: White > 6.0

#### Notes

Unplanned Power Changes per 7000 Critical Hrs	2Q/00	3Q/00	4Q/00	1Q/01	2Q/01	3Q/01	4Q/01	1Q/02
Unplanned power changes	0	1.0	0	1.0	1.0	0	0	0
Critical hours	1264.3	2208.0	2209.0	2160.0	2079.2	2208.0	2209.0	1112.3
Indicator value	1.9	1.9	1.9	1.8	2.4	1.6	1.6	0.9

Licensee Comments: none

### Safety System Unavailability, Emergency AC Power



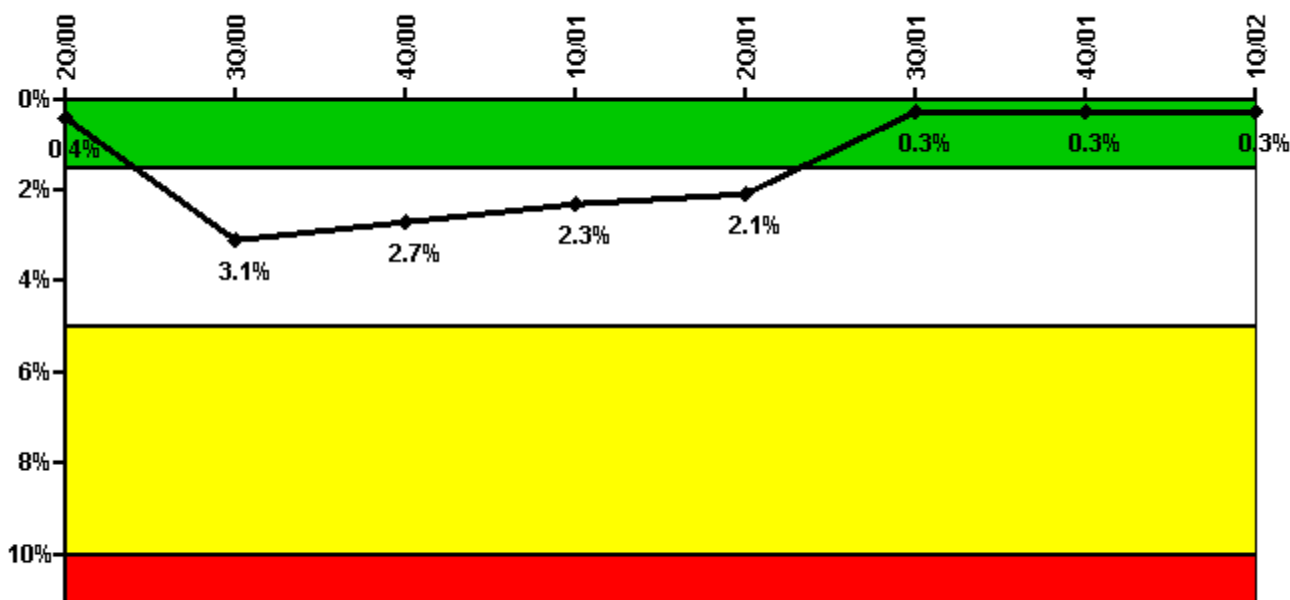
Thresholds: White > 2.5% Yellow > 5.0% Red > 10.0%

#### Notes

Safety System Unavailability, Emergency AC Power	2Q/00	3Q/00	4Q/00	1Q/01	2Q/01	3Q/01	4Q/01	1Q/02
<b>Train 1</b>								
Planned unavailable hours	6.93	29.75	19.88	8.39	16.60	1.57	23.64	9.47
Unplanned unavailable hours	0	0	6.57	1.02	8.49	2.57	31.17	19.19
Fault exposure hours	0	0	0	0	0	0	0	0
Effective Reset hours	0	0	0	0	0	0	0	0
Required hours	2183.00	2208.00	2209.00	2160.00	2183.00	2208.00	2209.00	1783.66
<b>Train 2</b>								
Planned unavailable hours	10.54	43.27	17.75	8.39	7.63	13.78	2.95	14.64
Unplanned unavailable hours	0.02	0	0	0	0	5.22	1.33	0
Fault exposure hours	0	0	0	0	0	0	0	0
Effective Reset hours	0	0	0	0	0	0	0	0
Required hours	2183.00	2208.00	2209.00	2160.00	2183.00	2208.00	2209.00	1592.81
Indicator value	1.0%	1.2%	1.3%	1.1%	1.2%	1.1%	1.2%	1.2%

Licensee Comments: none

### Safety System Unavailability, High Pressure Injection System (HPSI)



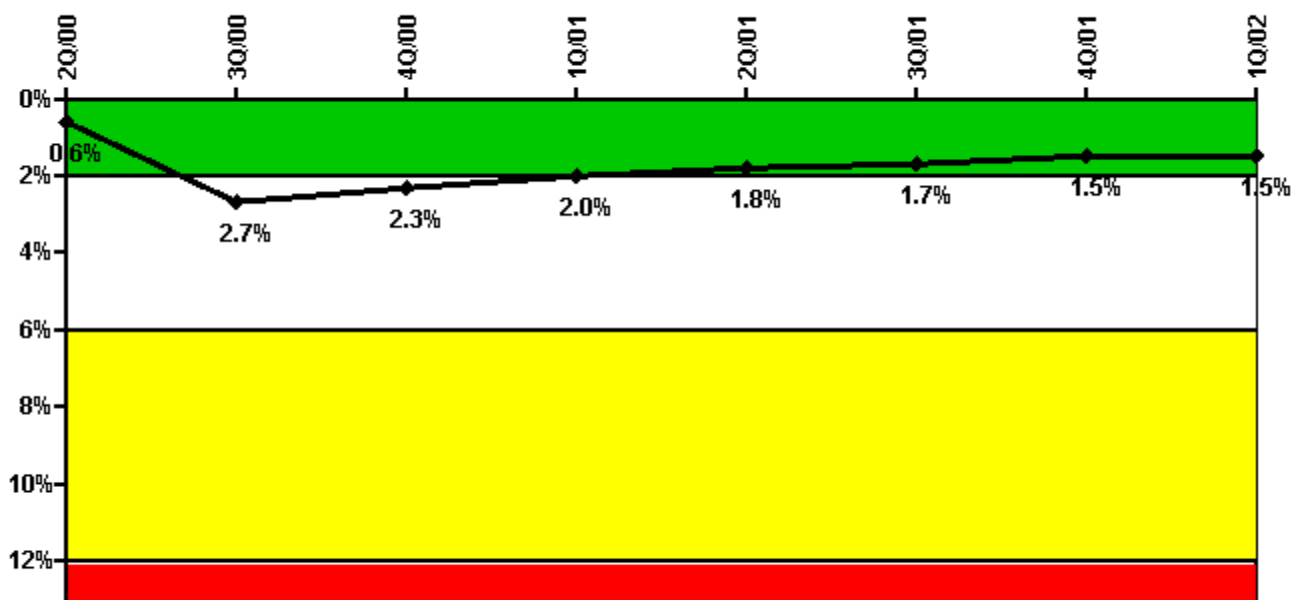
Thresholds: White > 1.5% Yellow > 5.0% Red > 10.0%

#### Notes

Safety System Unavailability, High Pressure Injection System (HPSI)	2Q/00	3Q/00	4Q/00	1Q/01	2Q/01	3Q/01	4Q/01	1Q/02
<b>Train 1</b>								
Planned unavailable hours	7.01	3.74	3.62	0.06	7.68	1.93	2.00	0.51
Unplanned unavailable hours	0	0	0	0	0	0	0	0
Fault exposure hours	0	0	0	0	0	0	0	0
Effective Reset hours	0	0	0	0	0	0	0	0
Required hours	1648.40	2208.00	2209.00	2160.00	2183.00	2208.00	2209.00	1194.56
<b>Train 2</b>								
Planned unavailable hours	4.46	5.33	1.75	1.11	2.96	7.58	5.82	23.46
Unplanned unavailable hours	0	0	0	0	0	0	0	0
Fault exposure hours	0	654.20	0	0	0	0	0	0
Effective Reset hours	0	0	0	0	0	648.28	0	0
Required hours	1648.40	2208.00	2209.00	2160.00	2183.00	2208.00	2209.00	1194.56
Indicator value	0.4%	3.1%	2.7%	2.3%	2.1%	0.3%	0.3%	0.3%

Licensee Comments: none

### Safety System Unavailability, Heat Removal System (AFW)



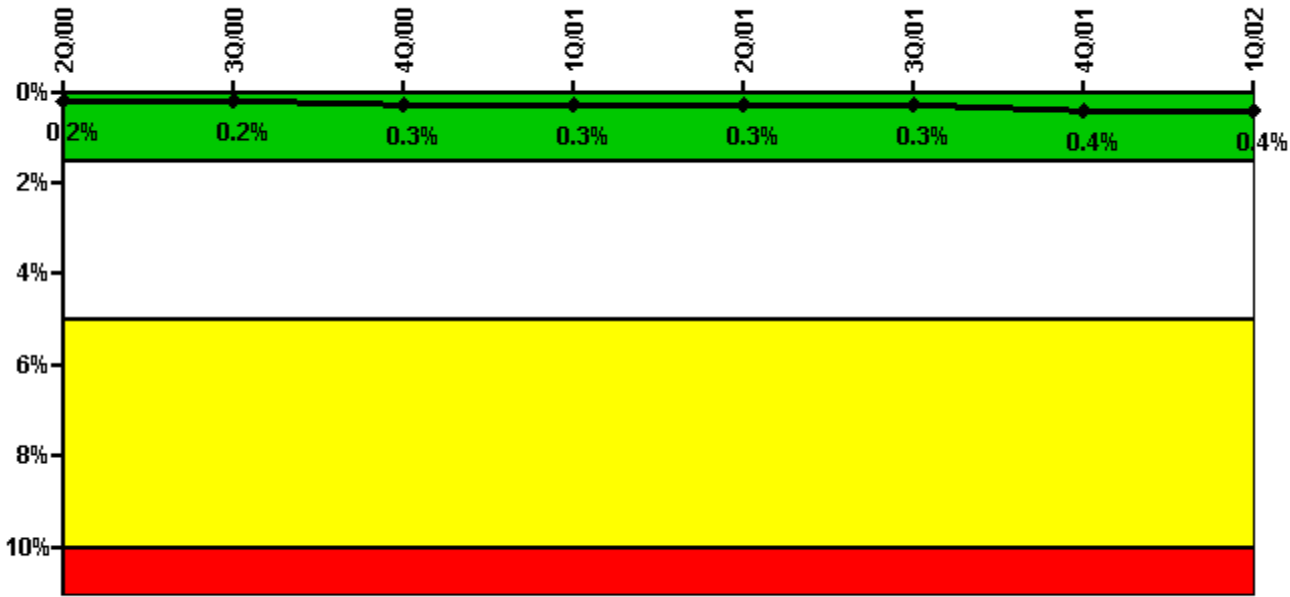
Thresholds: White > 2.0% Yellow > 6.0% Red > 12.0%

#### Notes

Safety System Unavailability, Heat Removal System (AFW)	2Q/00	3Q/00	4Q/00	1Q/01	2Q/01	3Q/01	4Q/01	1Q/02
<b>Train 1</b>								
Planned unavailable hours	6.50	8.60	1.80	0.30	0.50	0.20	4.20	12.50
Unplanned unavailable hours	0	0	0	0	0	0	0	0
Fault exposure hours	0	0	0	0	0	0	0	0
Effective Reset hours	0	0	0	0	0	0	0	0
Required hours	1264.30	2208.00	2209.00	2160.00	2079.20	2208.00	2209.00	1112.30
<b>Train 2</b>								
Planned unavailable hours	3.50	12.60	2.80	0.60	1.00	10.10	2.20	0
Unplanned unavailable hours	0	0	1.80	0	0	0	0	0
Fault exposure hours	0	0	0	0	0	0	0	0
Effective Reset hours	0	0	0	0	0	0	0	0
Required hours	1264.30	2208.00	2209.00	2160.00	2079.20	2208.00	2209.00	1112.30
<b>Train 3</b>								
Planned unavailable hours	30.10	4.80	27.30	9.30	7.50	3.00	9.70	21.00
Unplanned unavailable hours	0	30.75	0	0	0	21.00	0	1.00
Fault exposure hours	0	672.50	0	0	0	0	0	0
Effective Reset hours	0	0	0	0	0	0	0	0
Required hours	1264.30	2208.00	2209.00	2160.00	2079.20	2208.00	2209.00	1112.30
Indicator value	0.6%	2.7%	2.3%	2.0%	1.8%	1.7%	1.5%	1.5%

Licensee Comments: none

### Safety System Unavailability, Residual Heat Removal System



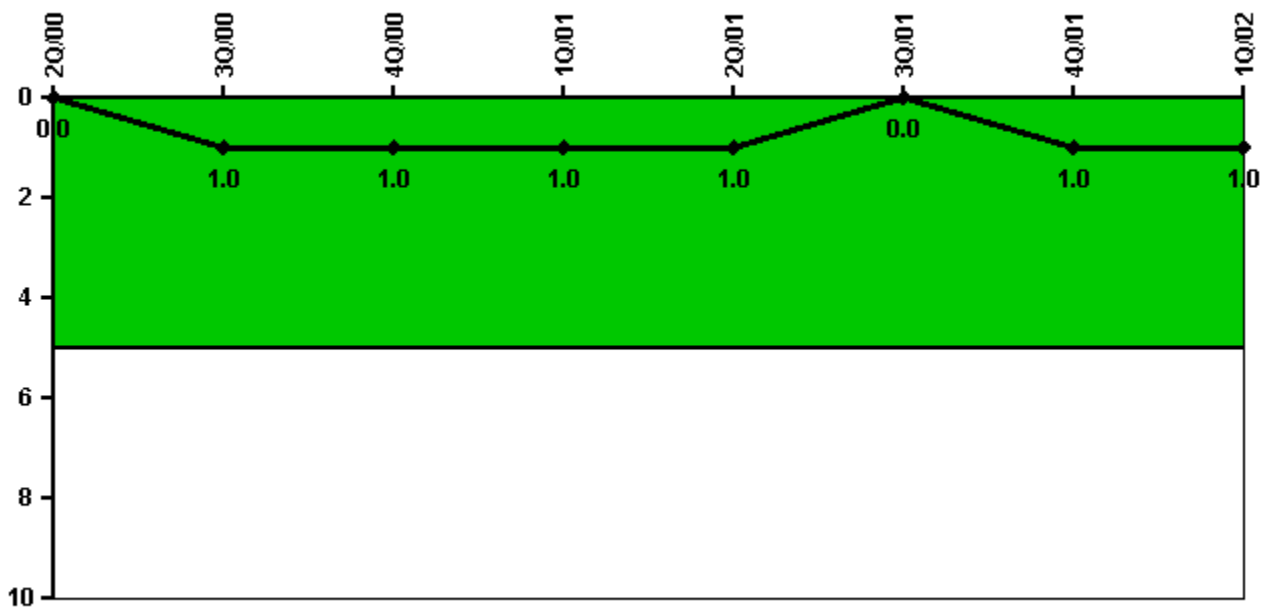
Thresholds: White > 1.5% Yellow > 5.0% Red > 10.0%

#### Notes

Safety System Unavailability, Residual Heat Removal System	2Q/00	3Q/00	4Q/00	1Q/01	2Q/01	3Q/01	4Q/01	1Q/02
<b>Train 1</b>								
Planned unavailable hours	23.18	8.01	4.38	5.31	12.68	7.46	25.70	2.96
Unplanned unavailable hours	0	0	0	0	0	0	0	0
Fault exposure hours	0	0	0	0	0	0	0	0
Effective Reset hours	0	0	0	0	0	0	0	0
Required hours	1333.00	2208.00	2209.00	2160.00	2183.00	2208.00	2209.00	1181.10
<b>Train 2</b>								
Planned unavailable hours	3.92	6.33	7.61	5.06	4.46	5.91	9.14	5.11
Unplanned unavailable hours	0	0	0	0	0	0	0	0
Fault exposure hours	0	0	0	0	0	0	0	0
Effective Reset hours	0	0	0	0	0	0	0	0
Required hours	1333.00	2208.00	2209.00	2160.00	2183.00	2208.00	2209.00	1181.10
<b>Train 3</b>								
Planned unavailable hours	0	0	0	0	0	0	0	0
Unplanned unavailable hours	0	0	0	0	0	0	0	0
Fault exposure hours	0	0	0	0	0	0	0	0
Effective Reset hours	0	0	0	0	0	0	0	0
Required hours	826.00	0	0	0	0	0	0	971.30
<b>Train 4</b>								
Planned unavailable hours	0	0	0	0	0	0	0	0
Unplanned unavailable hours	0	0	0	0	0	0	0	0
Fault exposure hours	0	0	0	0	0	0	0	0
Effective Reset hours	0	0	0	0	0	0	0	0
Required hours	826.00	0	0	0	0	0	0	971.30
<b>Indicator value</b>	<b>0.2%</b>	<b>0.2%</b>	<b>0.3%</b>	<b>0.3%</b>	<b>0.3%</b>	<b>0.3%</b>	<b>0.4%</b>	<b>0.4%</b>

Licensee Comments: none

### Safety System Functional Failures (PWR)



Thresholds: White > 5.0

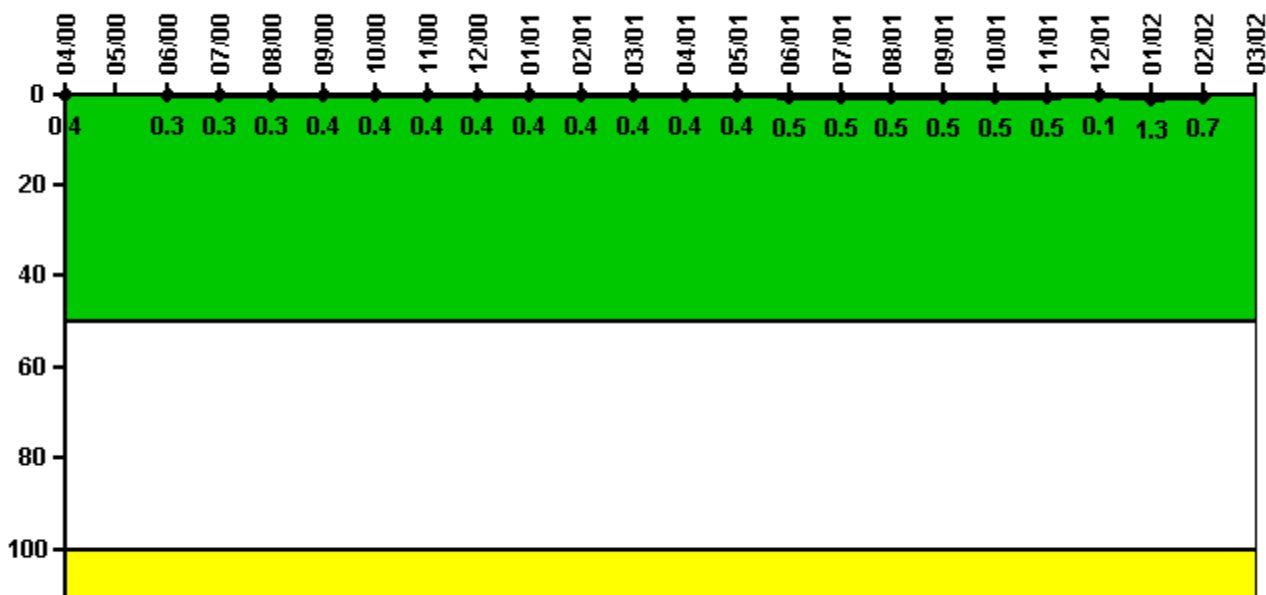
#### Notes

Safety System Functional Failures (PWR)	2Q/00	3Q/00	4Q/00	1Q/01	2Q/01	3Q/01	4Q/01	1Q/02
Safety System Functional Failures	0	1	0	0	0	0	1	0
Indicator value	0	1	1	1	1	0	1	1

Licensee Comments: none



### Reactor Coolant System Activity



Thresholds: White > 50.0 Yellow > 100.0

#### Notes

Reactor Coolant System Activity	4/00	5/00	6/00	7/00	8/00	9/00	10/00	11/00	12/00	1/01	2/01	3/01
Maximum activity	0.003990	N/A	0.002960	0.003260	0.003190	0.003530	0.003800	0.003700	0.004310	0.003910	0.004290	0.004000
Technical specification limit	1.0	1.0	1.0	1.0	1.0	1.0	1.0	1.0	1.0	1.0	1.0	1.0
Indicator value	0.4	N/A	0.3	0.3	0.3	0.4	0.4	0.4	0.4	0.4	0.4	0.4

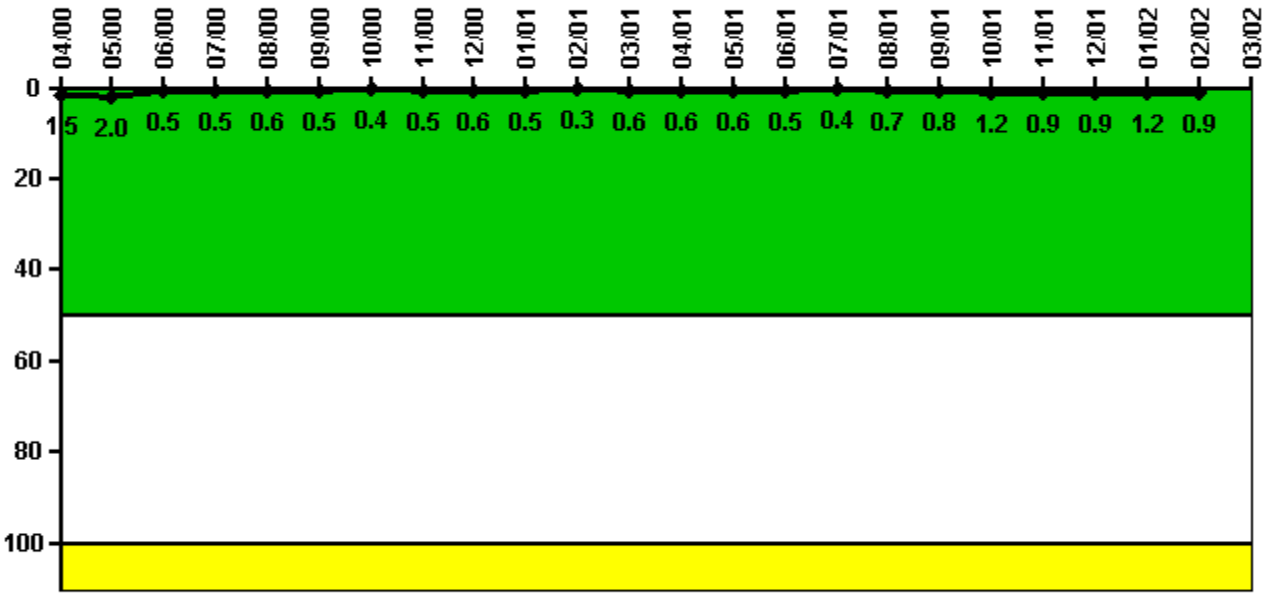
  

Reactor Coolant System Activity	4/01	5/01	6/01	7/01	8/01	9/01	10/01	11/01	12/01	1/02	2/02	3/02
Maximum activity	0.004110	0.004440	0.004520	0.004500	0.004680	0.004890	0.005150	0.005430	0.001240	0.012600	0.007420	N/A
Technical specification limit	1.0	1.0	1.0	1.0	1.0	1.0	1.0	1.0	1.0	1.0	1.0	1.0
Indicator value	0.4	0.4	0.5	0.5	0.5	0.5	0.5	0.5	0.1	1.3	0.7	N/A

Licensee Comments:

3/02: The unit was shut down for refueling for the month of March.

### Reactor Coolant System Leakage



Thresholds: White > 50.0 Yellow > 100.0

#### Notes

Reactor Coolant System Leakage	4/00	5/00	6/00	7/00	8/00	9/00	10/00	11/00	12/00	1/01	2/01	3/01
Maximum leakage	0.150	0.198	0.051	0.050	0.059	0.047	0.040	0.053	0.055	0.048	0.025	0.062
Technical specification limit	10.0	10.0	10.0	10.0	10.0	10.0	10.0	10.0	10.0	10.0	10.0	10.0
Indicator value	1.5	2.0	0.5	0.5	0.6	0.5	0.4	0.5	0.6	0.5	0.3	0.6

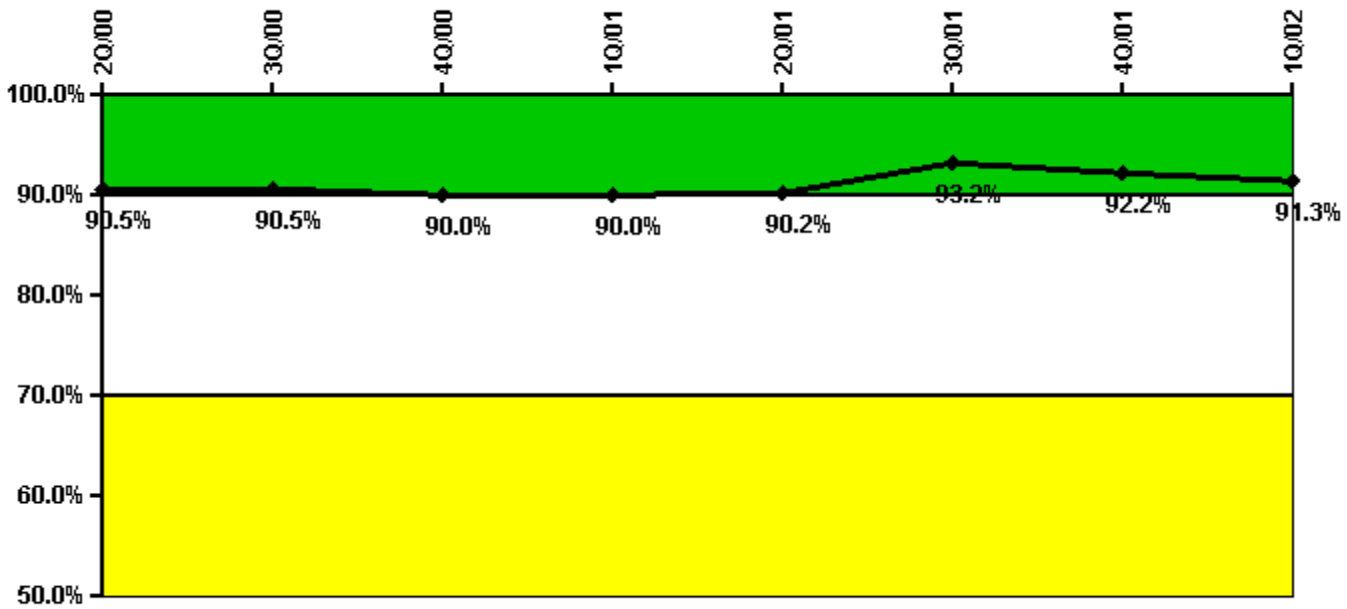
  

Reactor Coolant System Leakage	4/01	5/01	6/01	7/01	8/01	9/01	10/01	11/01	12/01	1/02	2/02	3/02
Maximum leakage	0.060	0.056	0.050	0.035	0.068	0.077	0.116	0.091	0.087	0.124	0.094	N/A
Technical specification limit	10.0	10.0	10.0	10.0	10.0	10.0	10.0	10.0	10.0	10.0	10.0	10.0
Indicator value	0.6	0.6	0.5	0.4	0.7	0.8	1.2	0.9	0.9	1.2	0.9	N/A

Licensee Comments:

3/02: The unit was shut down for refueling for the month of March.

### Drill/Exercise Performance



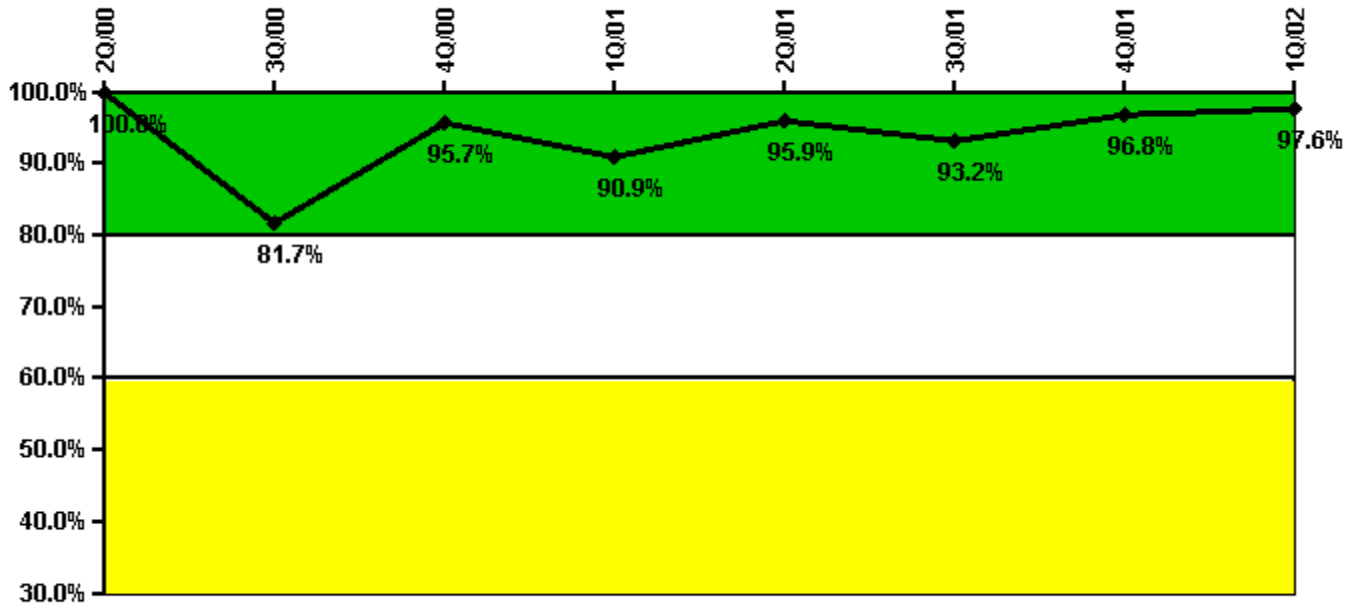
Thresholds: White < 90.0% Yellow < 70.0%

#### Notes

Drill/Exercise Performance	2Q/00	3Q/00	4Q/00	1Q/01	2Q/01	3Q/01	4Q/01	1Q/02
Successful opportunities	14.0	0	11.0	0	41.0	18.0	31.0	0
Total opportunities	14.0	0	12.0	0	45.0	19.0	36.0	0
Indicator value	90.5%	90.5%	90.0%	90.0%	90.2%	93.2%	92.2%	91.3%

Licensee Comments: none

### ERO Drill Participation



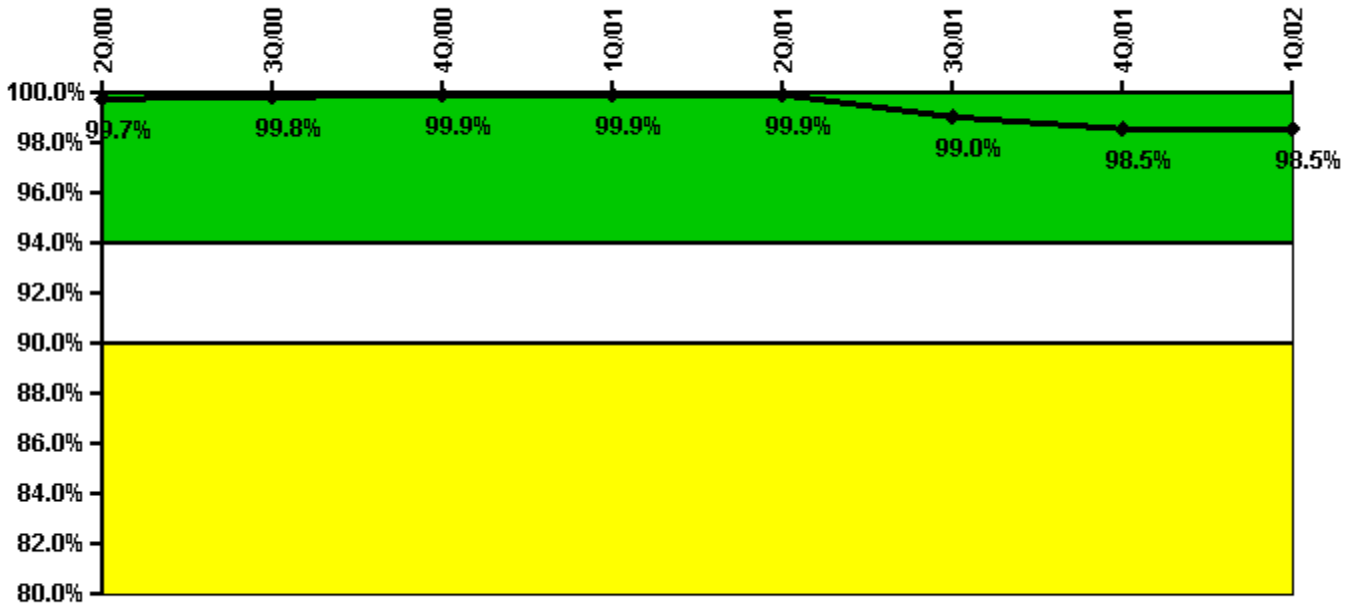
Thresholds: White < 80.0% Yellow < 60.0%

#### Notes

ERO Drill Participation	2Q/00	3Q/00	4Q/00	1Q/01	2Q/01	3Q/01	4Q/01	1Q/02
Participating Key personnel	55.0	58.0	66.0	60.0	71.0	68.0	92.0	83.0
Total Key personnel	55.0	71.0	69.0	66.0	74.0	73.0	95.0	85.0
Indicator value	100.0%	81.7%	95.7%	90.9%	95.9%	93.2%	96.8%	97.6%

Licensee Comments: none

### Alert & Notification System



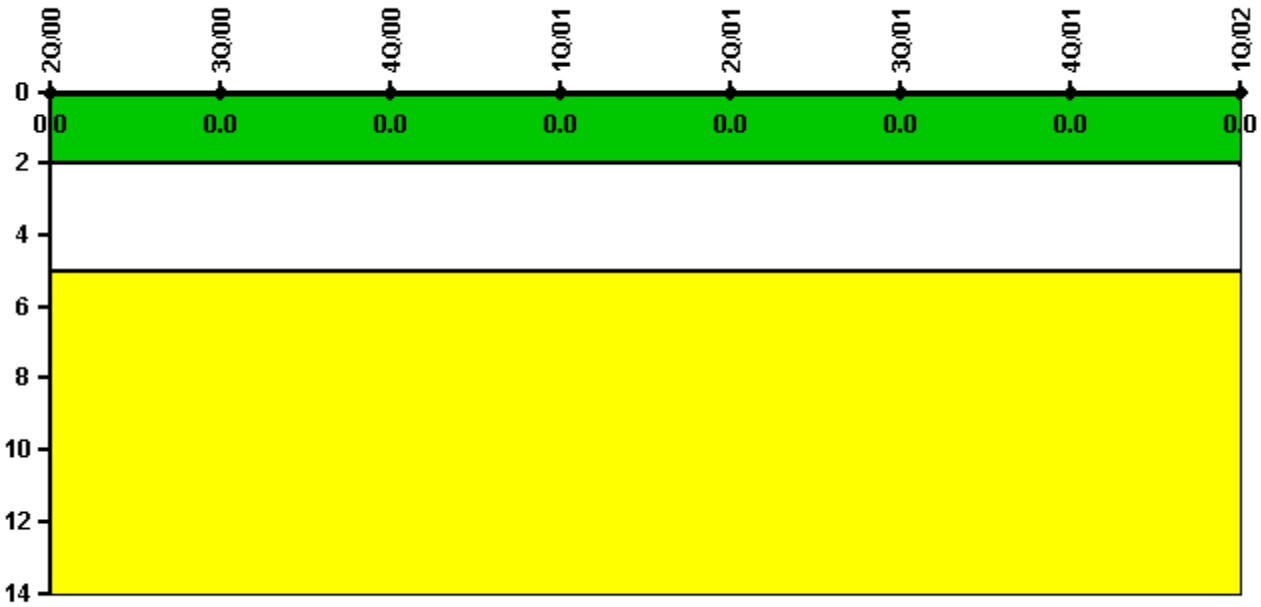
Thresholds: White < 94.0% Yellow < 90.0%

#### Notes

Alert & Notification System	2Q/00	3Q/00	4Q/00	1Q/01	2Q/01	3Q/01	4Q/01	1Q/02
Successful siren-tests	308	308	474	314	316	463	313	316
Total sirens-tests	308	308	474	316	316	477	318	318
Indicator value	99.7%	99.8%	99.9%	99.9%	99.9%	99.0%	98.5%	98.5%

Licensee Comments: none

### Occupational Exposure Control Effectiveness



Thresholds: White > 2.0 Yellow > 5.0

#### Notes

Occupational Exposure Control Effectiveness	2Q/00	3Q/00	4Q/00	1Q/01	2Q/01	3Q/01	4Q/01	1Q/02
High radiation area occurrences	0	0	0	0	0	0	0	0
Very high radiation area occurrences	0	0	0	0	0	0	0	0
Unintended exposure occurrences	0	0	0	0	0	0	0	0
Indicator value	0	0	0	0	0	0	0	0

Licensee Comments: none

### RETS/ODCM Radiological Effluent



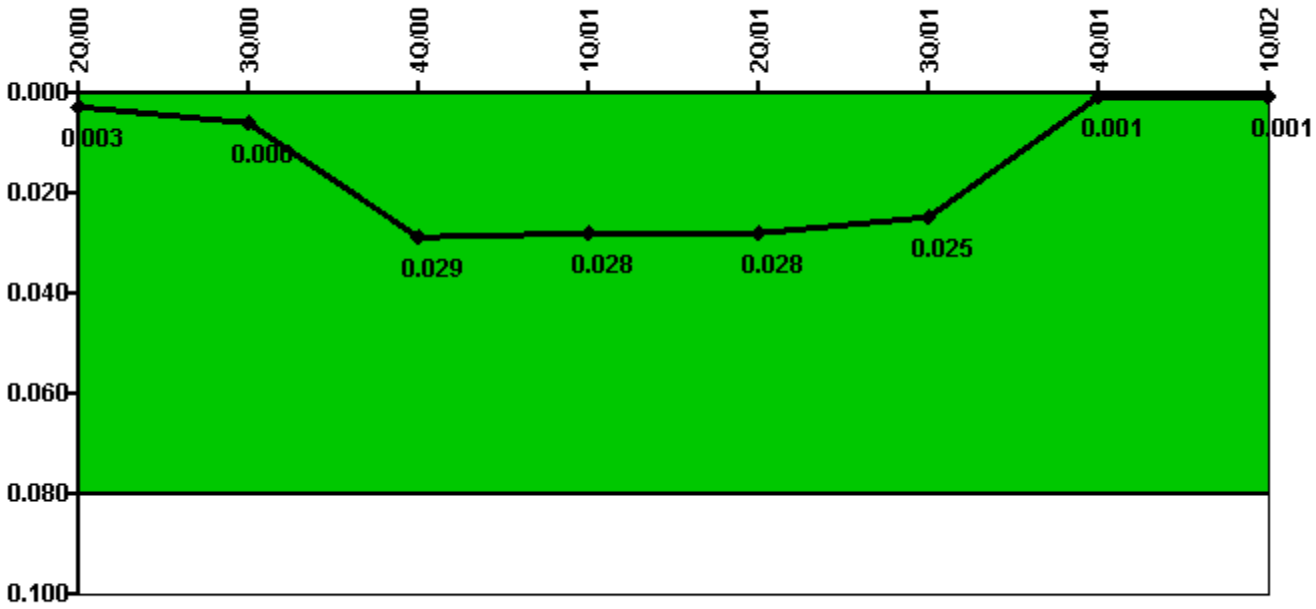
Thresholds: White > 1.0 Yellow > 3.0

#### Notes

RETS/ODCM Radiological Effluent	2Q/00	3Q/00	4Q/00	1Q/01	2Q/01	3Q/01	4Q/01	1Q/02
RETS/ODCM occurrences	0	0	0	0	0	0	0	0
Indicator value	0	0	0	0	0	0	0	0

Licensee Comments: none

### Protected Area Security Performance Index



Thresholds: White > 0.080

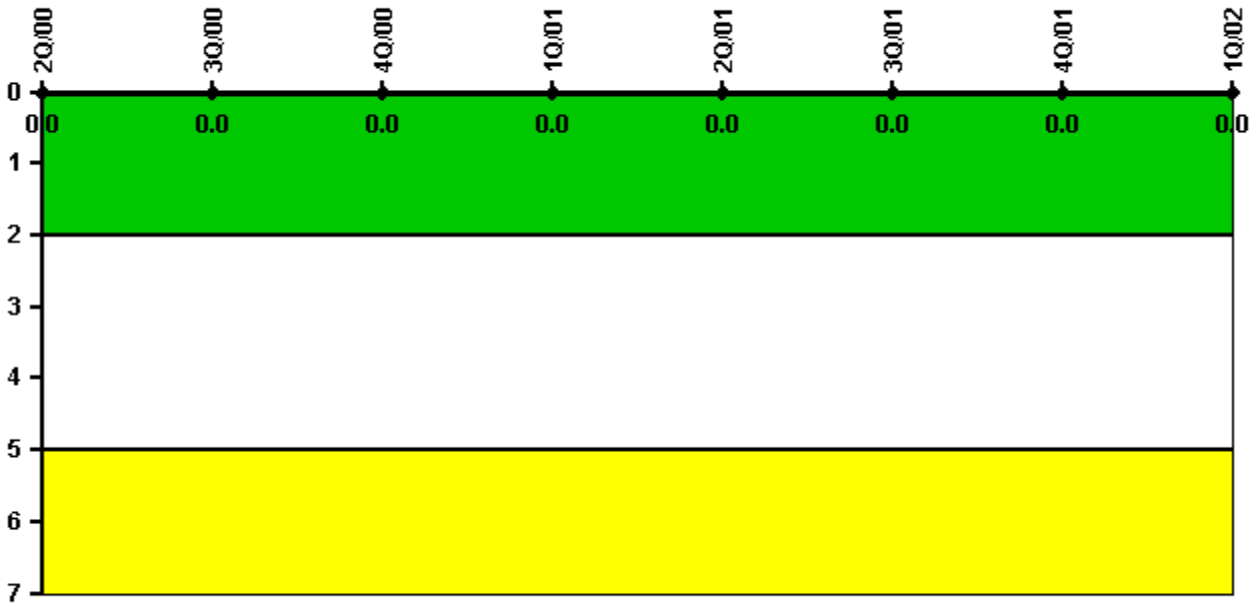
#### Notes

Protected Area Security Performance Index	2Q/00	3Q/00	4Q/00	1Q/01	2Q/01	3Q/01	4Q/01	1Q/02
IDS compensatory hours	15.10	134.00	1037.00	0	28.70	1.50	0	4.80
CCTV compensatory hours	29.1	12.9	0	10.5	0	0	0	0.1
IDS normalization factor	2.50	2.50	2.50	2.50	2.50	2.50	2.50	2.50
CCTV normalization factor	2.1	2.1	2.1	2.1	2.1	2.1	2.1	2.1
Index Value	0.003	0.006	0.029	0.028	0.028	0.025	0.001	0.001

Licensee Comments: none



### Personnel Screening Program



Thresholds: White > 2.0 Yellow > 5.0

#### Notes

Personnel Screening Program	2Q/00	3Q/00	4Q/00	1Q/01	2Q/01	3Q/01	4Q/01	1Q/02
Program failures	0	0	0	0	0	0	0	0
Indicator value	0	0	0	0	0	0	0	0

Licensee Comments: none

### FFD/Personnel Reliability



Thresholds: White > 2.0 Yellow > 5.0

#### Notes

FFD/Personnel Reliability	2Q/00	3Q/00	4Q/00	1Q/01	2Q/01	3Q/01	4Q/01	1Q/02
Program Failures	0	0	0	0	0	0	0	0
Indicator value	0	0	0	0	0	0	0	0

Licensee Comments: none

▲ [PI Summary](#) | [Inspection Findings Summary](#) | [Reactor Oversight Process](#)

Last Modified: May 1, 2002