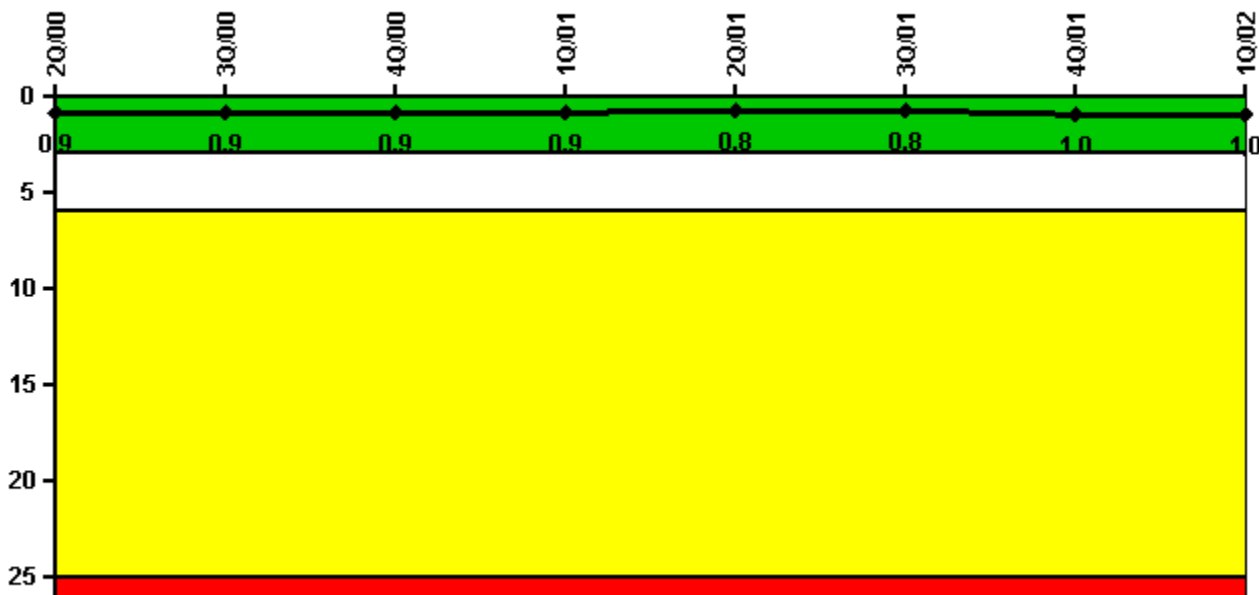


Kewaunee

1Q/2002 Performance Indicators

Licensee's General Comments: First Quarter 2002

Unplanned Scrams per 7000 Critical Hrs



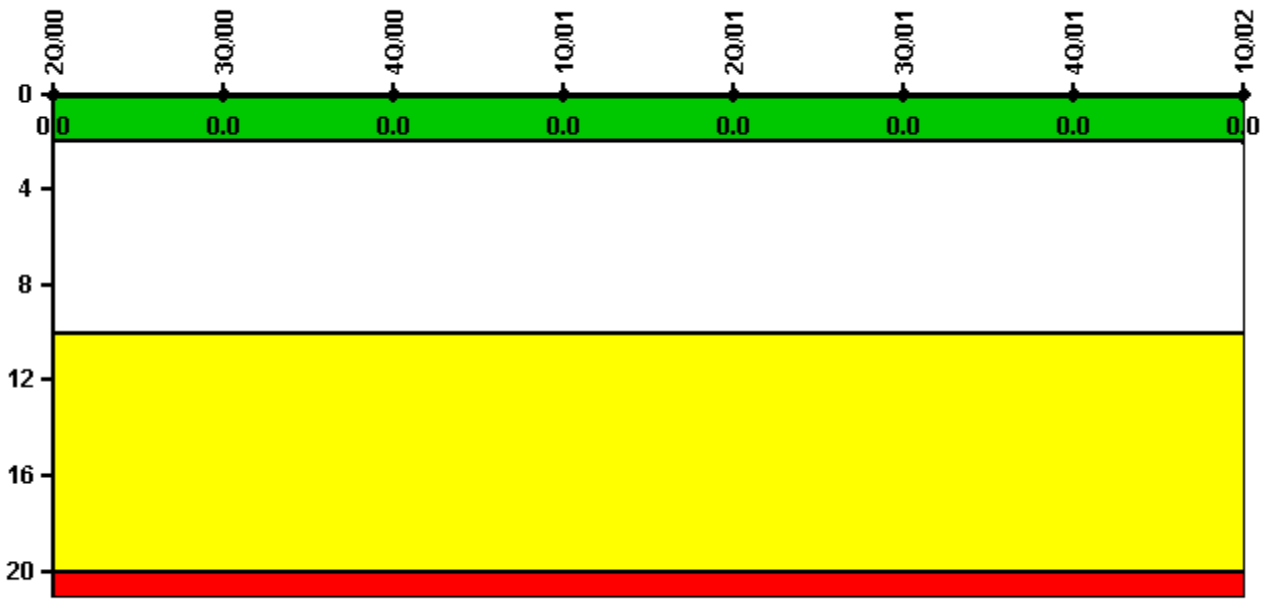
Thresholds: White > 3.0 Yellow > 6.0 Red > 25.0

Notes

Unplanned Scrams per 7000 Critical Hrs	2Q/00	3Q/00	4Q/00	1Q/01	2Q/01	3Q/01	4Q/01	1Q/02
Unplanned scrams	1.0	0	0	0	1.0	0	0	0
Critical hours	1202.3	2208.0	2209.0	2160.0	2156.8	2040.2	723.8	2160.0
Indicator value	0.9	0.9	0.9	0.9	0.8	0.8	1.0	1.0

Licensee Comments: none

Scrams with Loss of Normal Heat Removal



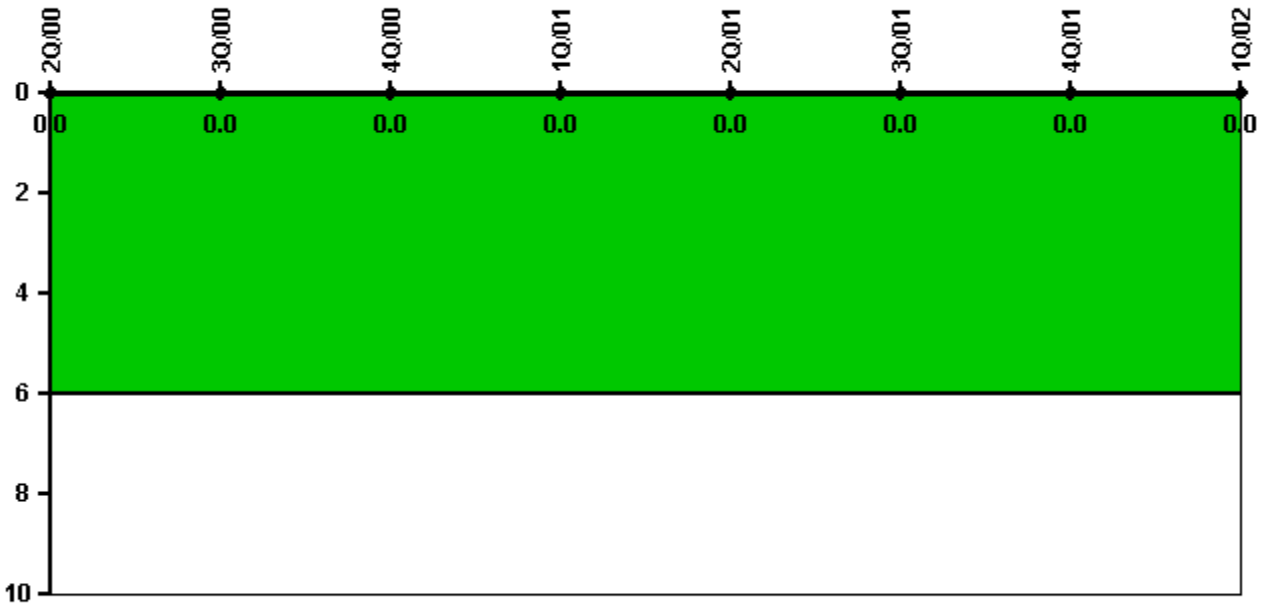
Thresholds: White > 2.0 Yellow > 10.0 Red > 20.0

Notes

Scrams with Loss of Normal Heat Removal	2Q/00	3Q/00	4Q/00	1Q/01	2Q/01	3Q/01	4Q/01	1Q/02
Scrams	0	0	0	0	0	0	0	0
Indicator value	0	0	0	0	0	0	0	0

Licensee Comments: none

Unplanned Power Changes per 7000 Critical Hrs



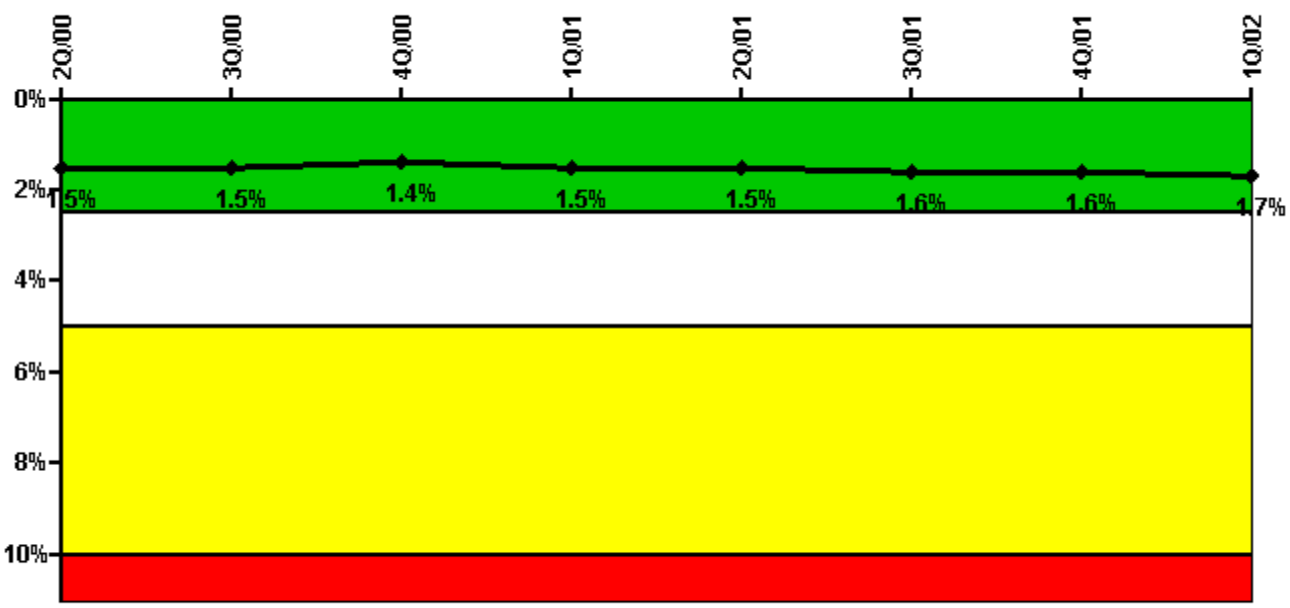
Thresholds: White > 6.0

Notes

Unplanned Power Changes per 7000 Critical Hrs	2Q/00	3Q/00	4Q/00	1Q/01	2Q/01	3Q/01	4Q/01	1Q/02
Unplanned power changes	0	0	0	0	0	0	0	0
Critical hours	1202.3	2208.0	2209.0	2160.0	2156.8	2040.2	723.8	2160.0
Indicator value	0	0	0	0	0	0	0	0

Licensee Comments: none

Safety System Unavailability, Emergency AC Power



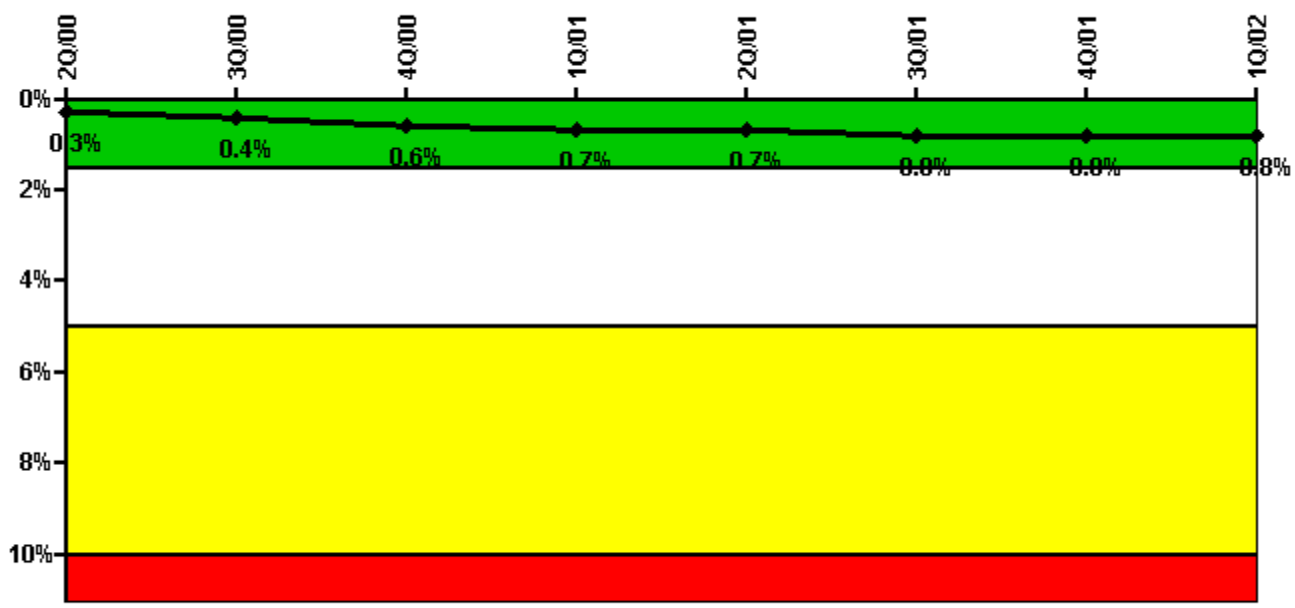
Thresholds: White > 2.5% Yellow > 5.0% Red > 10.0%

Notes

Safety System Unavailability, Emergency AC Power	2Q/00	3Q/00	4Q/00	1Q/01	2Q/01	3Q/01	4Q/01	1Q/02
Train 1								
Planned unavailable hours	106.24	37.00	25.48	34.02	47.22	25.83	32.54	24.70
Unplanned unavailable hours	0	0	5.07	0	0	0	0	0
Fault exposure hours	124.50	0	0	0	0	0	0	0
Effective Reset hours	0	0	0	0	0	0	0	0
Required hours	2183.00	2208.00	2209.00	2160.00	2183.00	2208.00	2209.00	2160.00
Train 2								
Planned unavailable hours	15.93	33.55	55.35	17.97	31.27	27.13	13.76	42.40
Unplanned unavailable hours	0	0	0	2.60	0	0	0	9.69
Fault exposure hours	0	0	0	0	0	0	0	0.13
Effective Reset hours	0	0	0	0	0	0	0	0
Required hours	2183.00	2208.00	2209.00	2160.00	2183.00	2208.00	2209.00	2160.00
Indicator value	1.5%	1.5%	1.4%	1.5%	1.5%	1.6%	1.6%	1.7%

Licensee Comments: none

Safety System Unavailability, High Pressure Injection System (HPSI)



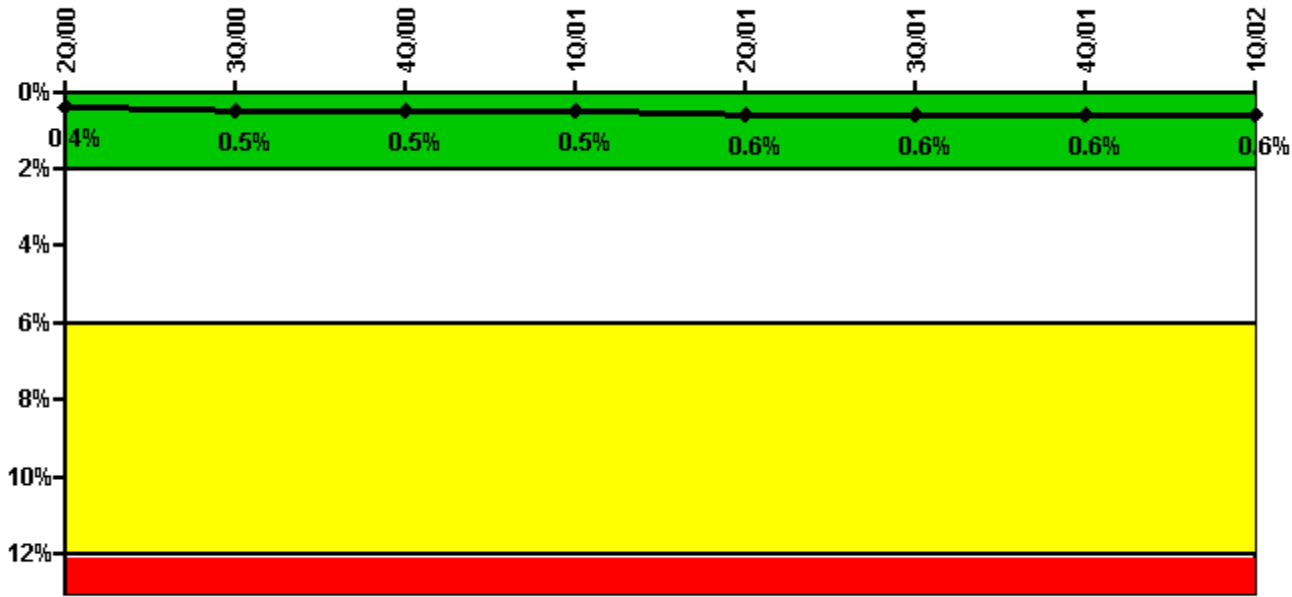
Thresholds: White > 1.5% Yellow > 5.0% Red > 10.0%

Notes

Safety System Unavailability, High Pressure Injection System (HPSI)	2Q/00	3Q/00	4Q/00	1Q/01	2Q/01	3Q/01	4Q/01	1Q/02
Train 1								
Planned unavailable hours	44.70	27.46	31.62	18.89	30.28	10.61	0	9.00
Unplanned unavailable hours	0	0	4.25	0	0	0	0	0
Fault exposure hours	0	0	0	0	0	0	0	0
Effective Reset hours	0	0	0	0	0	0	0	0
Required hours	1202.30	2208.00	2209.00	2160.00	2156.76	2040.17	778.00	2160.00
Train 2								
Planned unavailable hours	4.96	31.75	57.57	0.91	11.93	5.63	0	8.13
Unplanned unavailable hours	0	0	0	2.60	0	0	0	0
Fault exposure hours	0	0	0	0	0	0	0	0
Effective Reset hours	0	0	0	0	0	0	0	0
Required hours	1202.30	2208.00	2209.00	2160.00	2156.76	2040.17	778.00	2160.00
Indicator value	0.3%	0.4%	0.6%	0.7%	0.7%	0.8%	0.8%	0.8%

Licensee Comments: none

Safety System Unavailability, Heat Removal System (AFW)



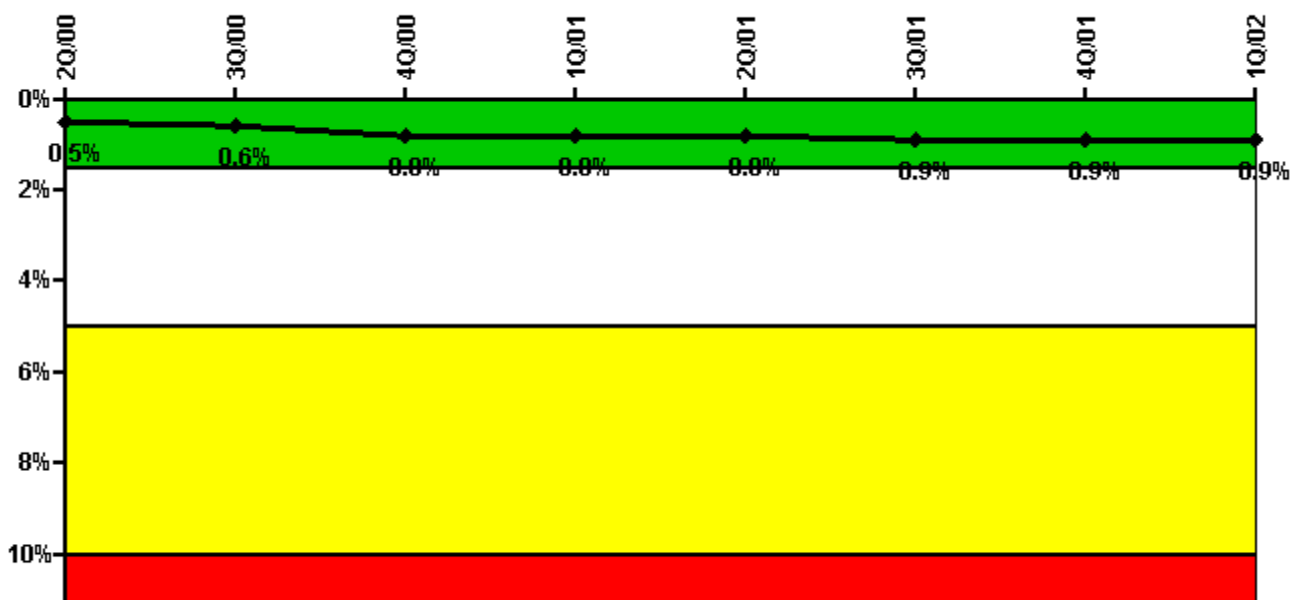
Thresholds: White > 2.0% Yellow > 6.0% Red > 12.0%

Notes

Safety System Unavailability, Heat Removal System (AFW)	2Q/00	3Q/00	4Q/00	1Q/01	2Q/01	3Q/01	4Q/01	1Q/02
Train 1								
Planned unavailable hours	51.27	9.06	16.55	10.07	30.33	1.39	0.35	11.17
Unplanned unavailable hours	0	5.92	0	0	0.30	0	0	0
Fault exposure hours	0	0	0	0	0	0	0	0
Effective Reset hours	0	0	0	0	0	0	0	0
Required hours	1202.30	2208.00	2209.00	2160.00	2156.76	2076.00	812.10	2160.00
Train 2								
Planned unavailable hours	18.45	13.40	39.62	1.09	10.72	2.22	0.52	9.36
Unplanned unavailable hours	0	8.57	0	2.60	15.35	0	0	0
Fault exposure hours	0	0	0	0	17.93	0	0	0
Effective Reset hours	0	0	0	0	0	0	0	0
Required hours	1202.30	2208.00	2209.00	2160.00	2156.76	2076.00	812.10	2160.00
Train 3								
Planned unavailable hours	17.21	1.23	2.84	3.46	3.20	2.90	3.71	8.22
Unplanned unavailable hours	0	21.82	0	3.92	3.88	0	0	0
Fault exposure hours	0	0	0	0	0	0	0	0
Effective Reset hours	0	0	0	0	0	0	0	0
Required hours	1202.30	2208.00	2209.00	2160.00	2156.76	2076.00	812.10	2160.00
Indicator value	0.4%	0.5%	0.5%	0.5%	0.6%	0.6%	0.6%	0.6%

Licensee Comments: none

Safety System Unavailability, Residual Heat Removal System



Thresholds: White > 1.5% Yellow > 5.0% Red > 10.0%

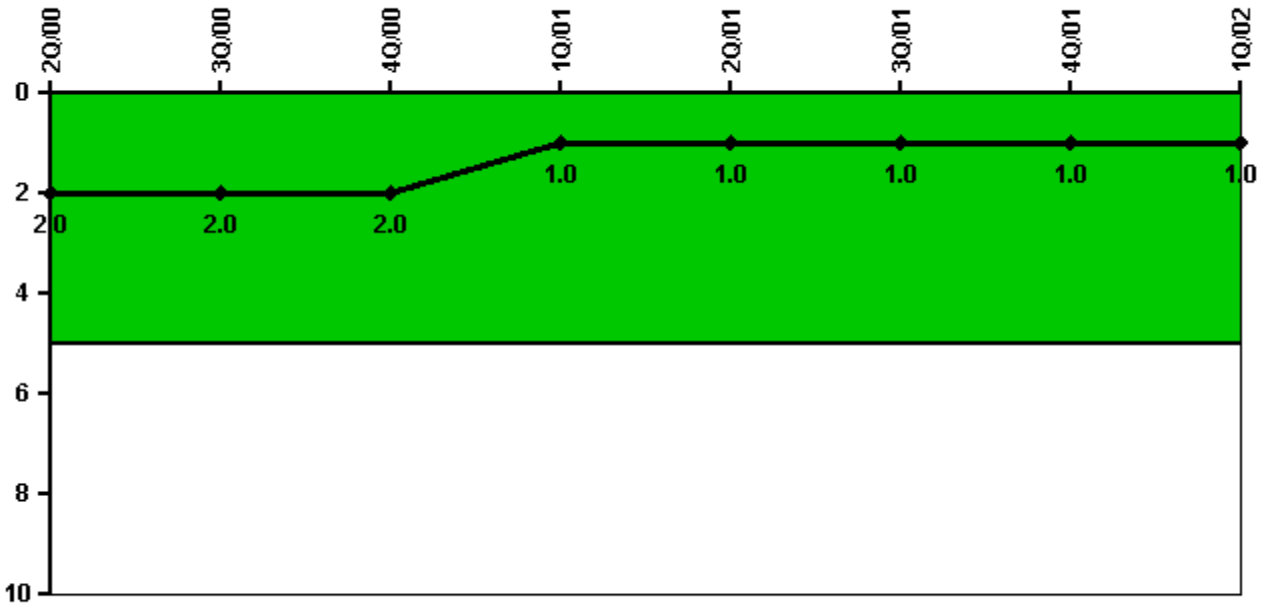
Notes

Safety System Unavailability, Residual Heat Removal System	2Q/00	3Q/00	4Q/00	1Q/01	2Q/01	3Q/01	4Q/01	1Q/02
Train 1								
Planned unavailable hours	94.71	28.44	31.99	24.15	28.66	3.98	0.66	18.09
Unplanned unavailable hours	0	0	4.25	0	0	0	0	3.90
Fault exposure hours	0	0	0	0	0	0	0	0
Effective Reset hours	0	0	0	0	0	0	0	0
Required hours	2183.00	2208.00	2209.00	2160.00	2183.00	2208.00	2209.00	2160.00
Train 2								
Planned unavailable hours	5.94	32.50	57.65	0.90	9.75	11.99	0.55	11.69
Unplanned unavailable hours	0	0	0	2.60	0	0	0	7.62
Fault exposure hours	0	0	0	0	0	0	0	0
Effective Reset hours	0	0	0	0	0	0	0	0
Required hours	2183.00	2208.00	2209.00	2160.00	2183.00	2208.00	2209.00	2160.00
Indicator value	0.5%	0.6%	0.8%	0.8%	0.8%	0.9%	0.9%	0.9%

Licensee Comments:

1Q/02: Component Cooling System design deficiency from original construction could have affected the amount of time it would have taken to perform a plant cool down using RHR. No actual failure occurred, therefore, no fault exposure is reported.

Safety System Functional Failures (PWR)



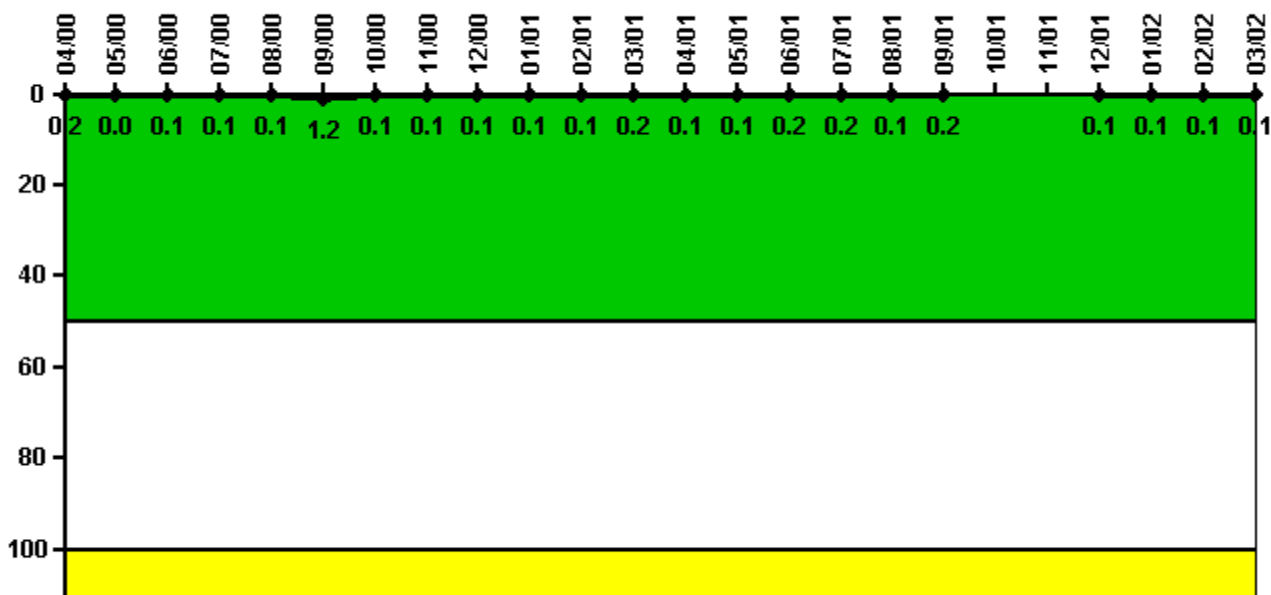
Thresholds: White > 5.0

Notes

Safety System Functional Failures (PWR)	2Q/00	3Q/00	4Q/00	1Q/01	2Q/01	3Q/01	4Q/01	1Q/02
Safety System Functional Failures	1	0	0	0	1	0	0	0
Indicator value	2	2	2	1	1	1	1	1

Licensee Comments: none

Reactor Coolant System Activity



Thresholds: White > 50.0 Yellow > 100.0

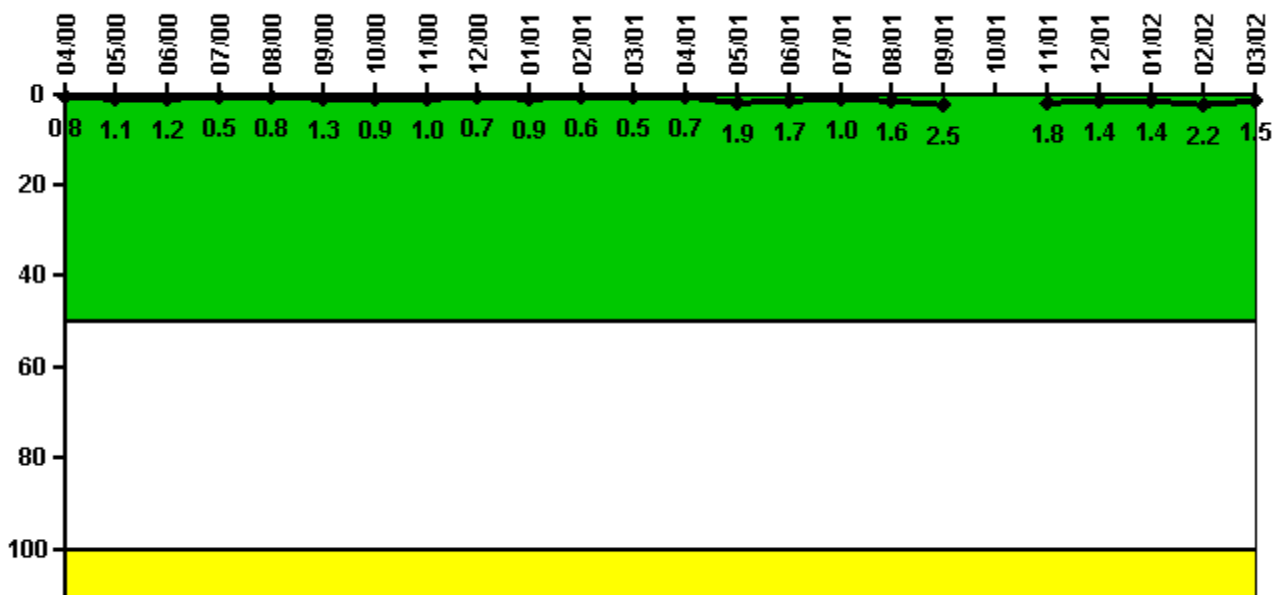
Notes

Reactor Coolant System Activity	4/00	5/00	6/00	7/00	8/00	9/00	10/00	11/00	12/00	1/01	2/01	3/01
Maximum activity	0.000386	0	0.000207	0.000209	0.000231	0.002411	0.000247	0.000248	0.000253	0.000260	0.000270	0.000320
Technical specification limit	0.2	0.2	0.2	0.2	0.2	0.2	0.2	0.2	0.2	0.2	0.2	0.2
Indicator value	0.2	0	0.1	0.1	0.1	1.2	0.1	0.1	0.1	0.1	0.1	0.2

Reactor Coolant System Activity	4/01	5/01	6/01	7/01	8/01	9/01	10/01	11/01	12/01	1/02	2/02	3/02
Maximum activity	0.000286	0.000282	0.000310	0.000301	0.000295	0.000317	N/A	N/A	0.000203	0.000215	0.000224	0.000215
Technical specification limit	0.2	0.2	0.2	0.2	0.2	0.2	0.2	0.2	0.2	0.2	0.2	0.2
Indicator value	0.1	0.1	0.2	0.2	0.1	0.2	N/A	N/A	0.1	0.1	0.1	0.1

Licensee Comments: none

Reactor Coolant System Leakage



Thresholds: White > 50.0 Yellow > 100.0

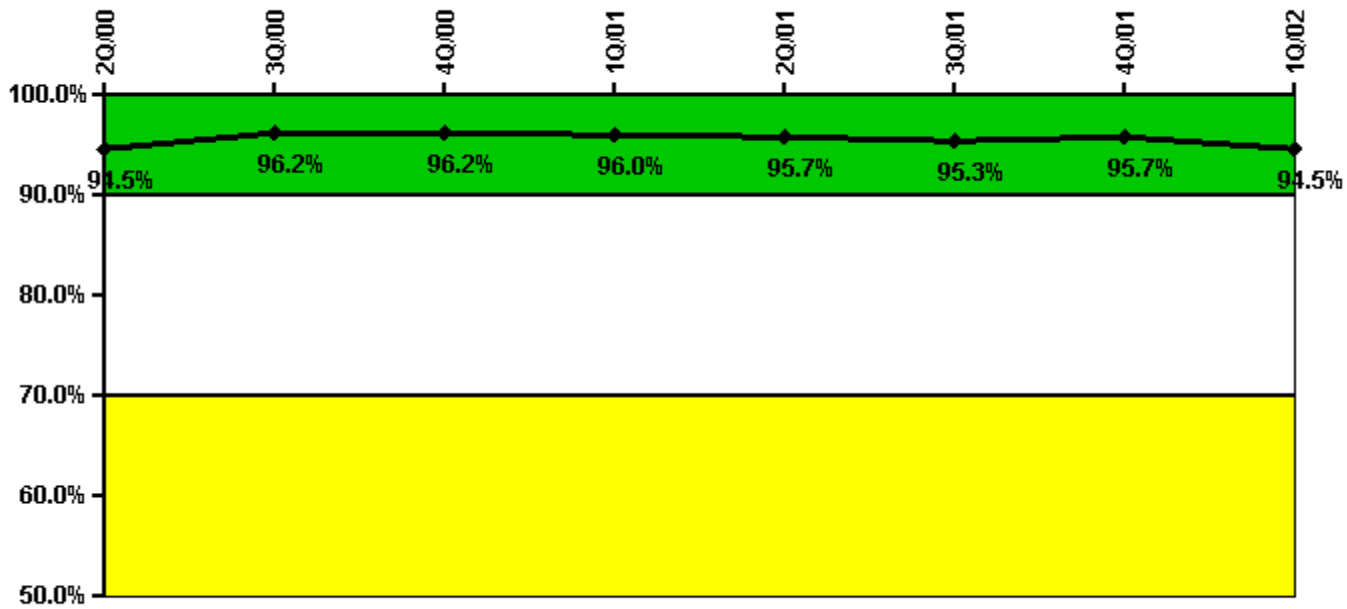
Notes

Reactor Coolant System Leakage	4/00	5/00	6/00	7/00	8/00	9/00	10/00	11/00	12/00	1/01	2/01	3/01
Maximum leakage	0.081	0.112	0.115	0.047	0.078	0.134	0.090	0.102	0.072	0.088	0.062	0.054
Technical specification limit	10.0	10.0	10.0	10.0	10.0	10.0	10.0	10.0	10.0	10.0	10.0	10.0
Indicator value	0.8	1.1	1.2	0.5	0.8	1.3	0.9	1.0	0.7	0.9	0.6	0.5

Reactor Coolant System Leakage	4/01	5/01	6/01	7/01	8/01	9/01	10/01	11/01	12/01	1/02	2/02	3/02
Maximum leakage	0.070	0.193	0.173	0.097	0.156	0.248	N/A	0.181	0.141	0.141	0.220	0.152
Technical specification limit	10.0	10.0	10.0	10.0	10.0	10.0	10.0	10.0	10.0	10.0	10.0	10.0
Indicator value	0.7	1.9	1.7	1.0	1.6	2.5	N/A	1.8	1.4	1.4	2.2	1.5

Licensee Comments: none

Drill/Exercise Performance



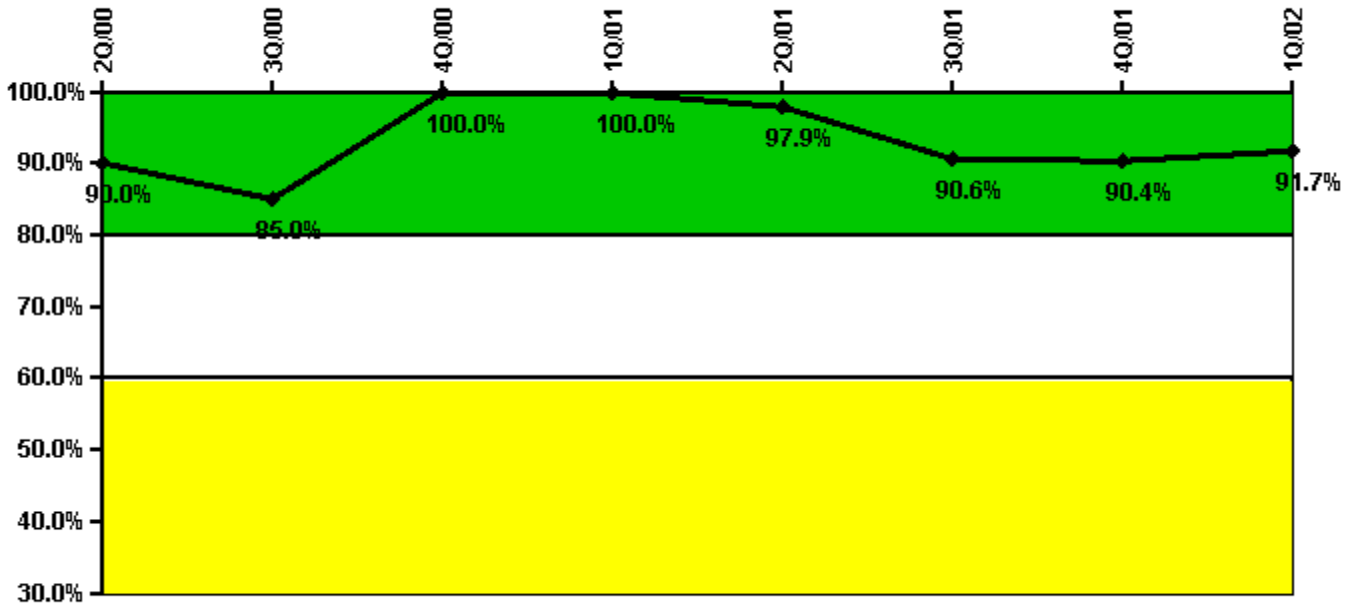
Thresholds: White < 90.0% Yellow < 70.0%

Notes

Drill/Exercise Performance	2Q/00	3Q/00	4Q/00	1Q/01	2Q/01	3Q/01	4Q/01	1Q/02
Successful opportunities	23.0	0	2.0	25.0	56.0	8.0	0	6.0
Total opportunities	24.0	0	2.0	26.0	58.0	11.0	0	6.0
Indicator value	94.5%	96.2%	96.2%	96.0%	95.7%	95.3%	95.7%	94.5%

Licensee Comments: none

ERO Drill Participation



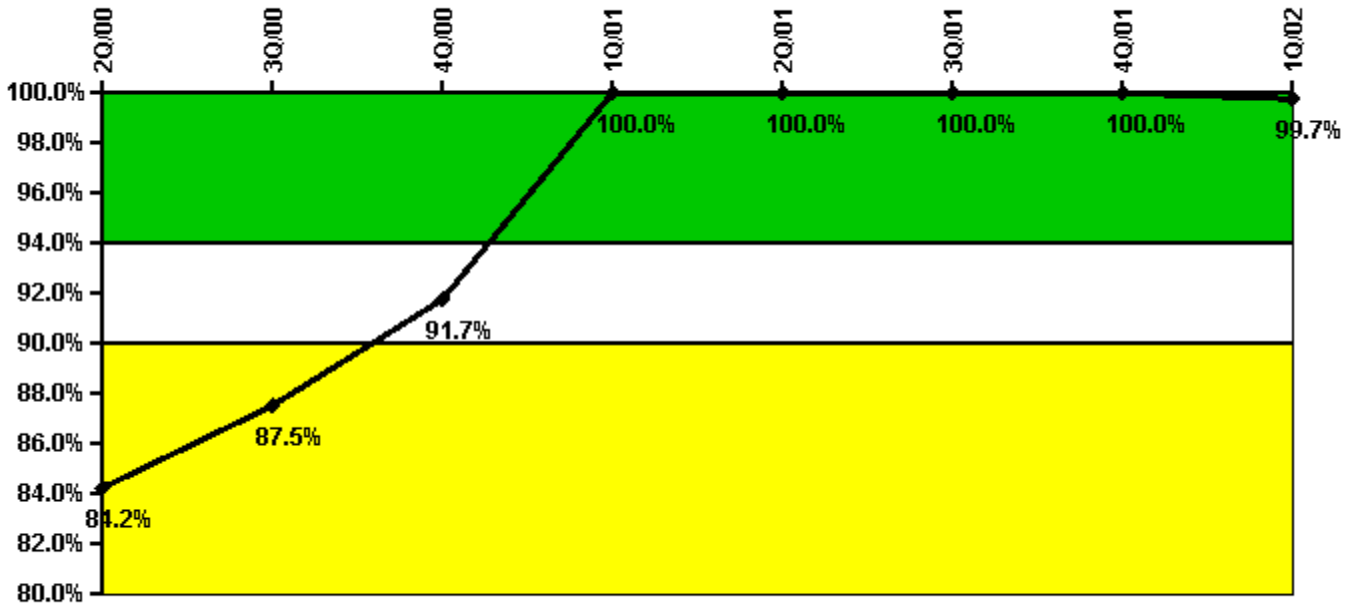
Thresholds: White < 80.0% Yellow < 60.0%

Notes

ERO Drill Participation	2Q/00	3Q/00	4Q/00	1Q/01	2Q/01	3Q/01	4Q/01	1Q/02
Participating Key personnel	36.0	34.0	40.0	39.0	47.0	48.0	47.0	44.0
Total Key personnel	40.0	40.0	40.0	39.0	48.0	53.0	52.0	48.0
Indicator value	90.0%	85.0%	100.0%	100.0%	97.9%	90.6%	90.4%	91.7%

Licensee Comments: none

Alert & Notification System



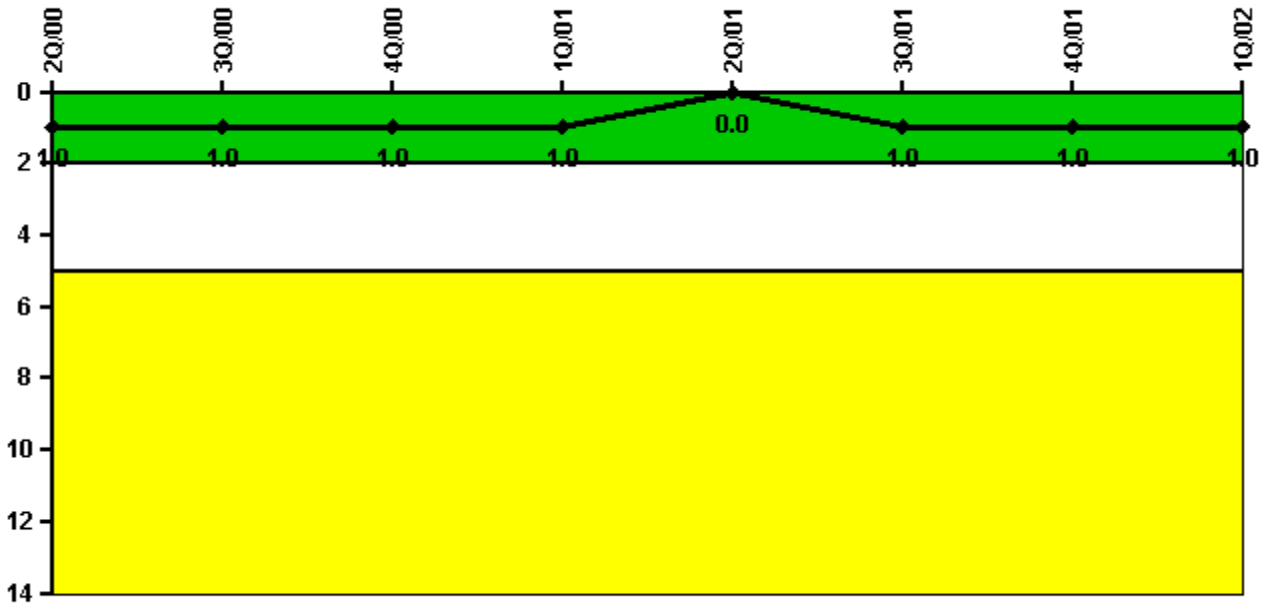
Thresholds: White < 94.0% Yellow < 90.0%

Notes

Alert & Notification System	2Q/00	3Q/00	4Q/00	1Q/01	2Q/01	3Q/01	4Q/01	1Q/02
Successful siren-tests	78	78	78	78	78	78	78	77
Total sirens-tests	78	78	78	78	78	78	78	78
Indicator value	84.2%	87.5%	91.7%	100.0%	100.0%	100.0%	100.0%	99.7%

Licensee Comments: none

Occupational Exposure Control Effectiveness



Thresholds: White > 2.0 Yellow > 5.0

Notes

Occupational Exposure Control Effectiveness	2Q/00	3Q/00	4Q/00	1Q/01	2Q/01	3Q/01	4Q/01	1Q/02
High radiation area occurrences	0	0	0	0	0	1	0	0
Very high radiation area occurrences	1	0	0	0	0	0	0	0
Unintended exposure occurrences	0	0	0	0	0	0	0	0
Indicator value	1	1	1	1	0	1	1	1

Licensee Comments: none

RETS/ODCM Radiological Effluent



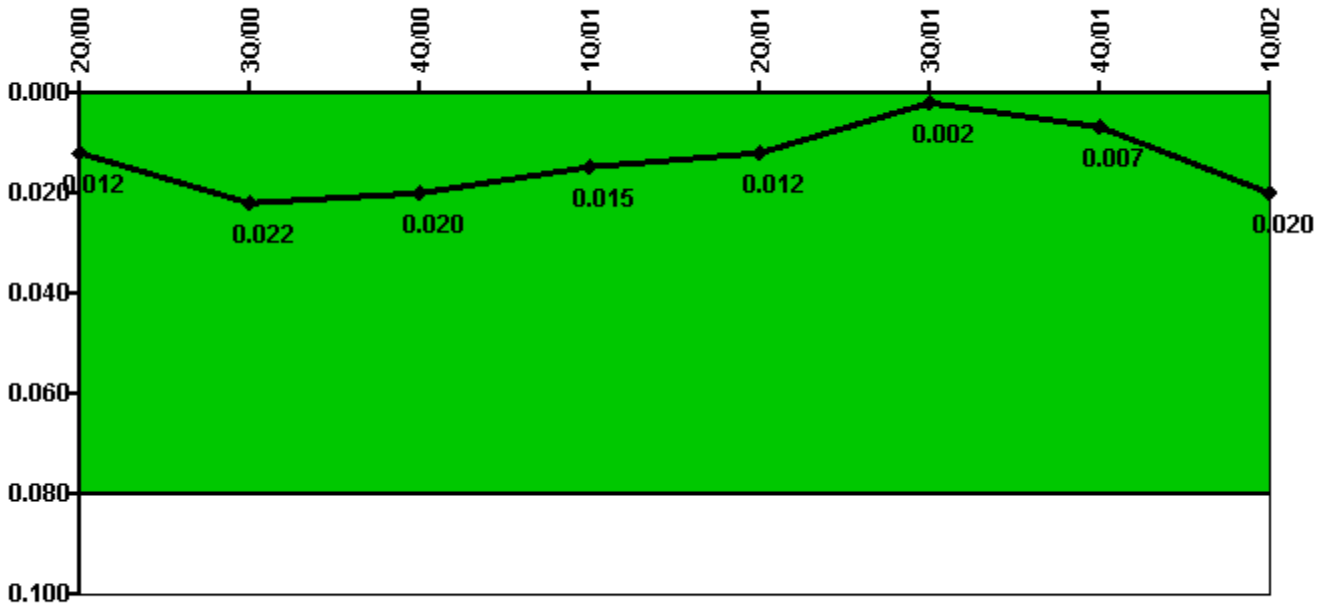
Thresholds: White > 1.0 Yellow > 3.0

Notes

RETS/ODCM Radiological Effluent	2Q/00	3Q/00	4Q/00	1Q/01	2Q/01	3Q/01	4Q/01	1Q/02
RETS/ODCM occurrences	0	0	0	0	0	0	0	0
Indicator value	0	0	0	0	0	0	0	0

Licensee Comments: none

Protected Area Security Performance Index



Thresholds: White > 0.080

Notes

Protected Area Security Performance Index	2Q/00	3Q/00	4Q/00	1Q/01	2Q/01	3Q/01	4Q/01	1Q/02
IDS compensatory hours	73.50	179.70	0	0.50	9.70	1.70	113.70	227.80
CCTV compensatory hours	0.1	0	16.5	0	0	0	0	0
IDS normalization factor	1.00	1.00	1.00	1.00	1.00	1.00	1.00	1.00
CCTV normalization factor	1.0	1.0	1.0	1.0	1.0	1.0	1.0	1.0
Index Value	0.012	0.022	0.020	0.015	0.012	0.002	0.007	0.020

Licensee Comments: none

Personnel Screening Program



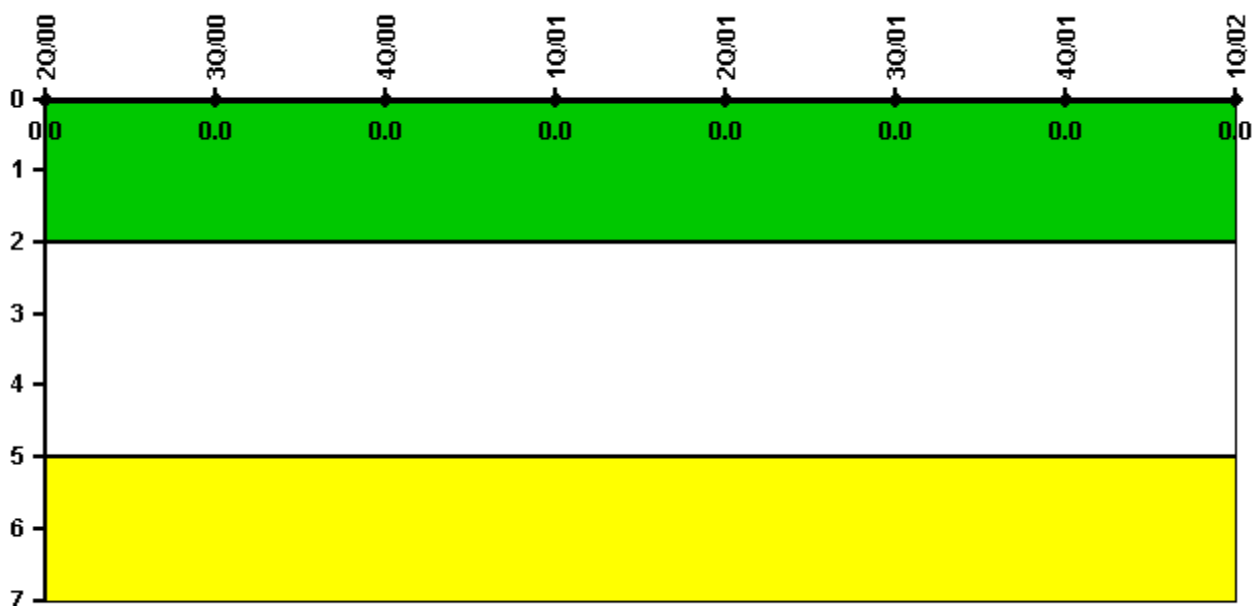
Thresholds: White > 2.0 Yellow > 5.0

Notes

Personnel Screening Program	2Q/00	3Q/00	4Q/00	1Q/01	2Q/01	3Q/01	4Q/01	1Q/02
Program failures	0	0	0	0	0	0	0	0
Indicator value	0	0	0	0	0	0	0	0

Licensee Comments: none

FFD/Personnel Reliability



Thresholds: White > 2.0 Yellow > 5.0

Notes

FFD/Personnel Reliability	2Q/00	3Q/00	4Q/00	1Q/01	2Q/01	3Q/01	4Q/01	1Q/02
Program Failures	0	0	0	0	0	0	0	0
Indicator value	0	0	0	0	0	0	0	0

Licensee Comments:

3Q/01: An evaluation has determined that the reportable security event (Event Notification Number 38243) counted in the Third Quarter of 2001 toward the Physical Protection Cornerstone under the FFD/Personal Reliability Program indicator was in error. The event was reportable, but the FFD/Personal Reliability Program operated as intended. Therefore, it does not count toward the performance indicator. The removal of this one event does not result in change to the indicator color of GREEN

▲ [PI Summary](#) | [Inspection Findings Summary](#) | [Reactor Oversight Process](#)

Last Modified: May 1, 2002