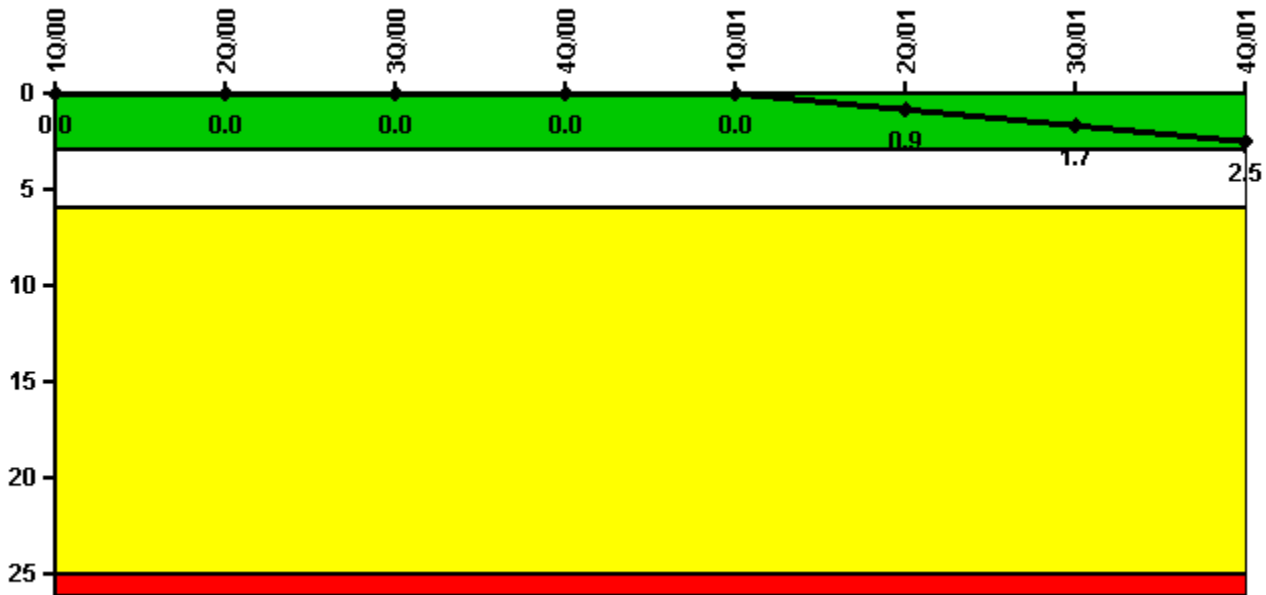


### Watts Bar 1

#### 4Q/2001 Performance Indicators

Licensee's General Comments: none

#### Unplanned Scrams per 7000 Critical Hrs



Thresholds: White > 3.0 Yellow > 6.0 Red > 25.0

#### Notes

Unplanned Scrams per 7000 Critical Hrs	1Q/00	2Q/00	3Q/00	4Q/00	1Q/01	2Q/01	3Q/01	4Q/01
Unplanned scrams	0	0	0	0	0	1.0	1.0	1.0
Critical hours	2184.0	2183.0	1704.0	2084.3	2160.0	2152.5	1956.9	2180.9
Indicator value	0	0	0	0	0	0.9	1.7	2.5

Licensee Comments: none

### Scrams with Loss of Normal Heat Removal



Thresholds: White > 2.0 Yellow > 10.0 Red > 20.0

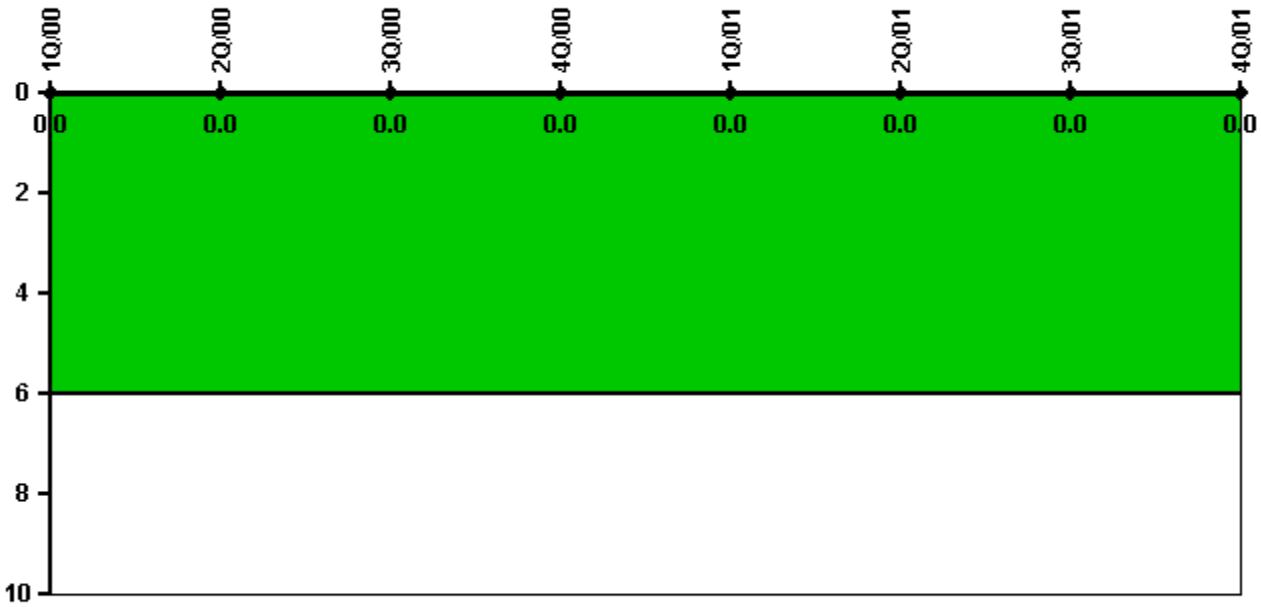
#### Notes

Scrams with Loss of Normal Heat Removal	1Q/00	2Q/00	3Q/00	4Q/00	1Q/01	2Q/01	3Q/01	4Q/01
Scrams	0	0	0	0	0	0	1.0	0
Indicator value	0	0	0	0	0	0	1.0	1.0

Licensee Comments:

3Q/01: This change is for the 3rd Quarter 2001. The event is discussed in LER 50-390/2001-002. This change does not affect the color of the indicator.

### Unplanned Power Changes per 7000 Critical Hrs



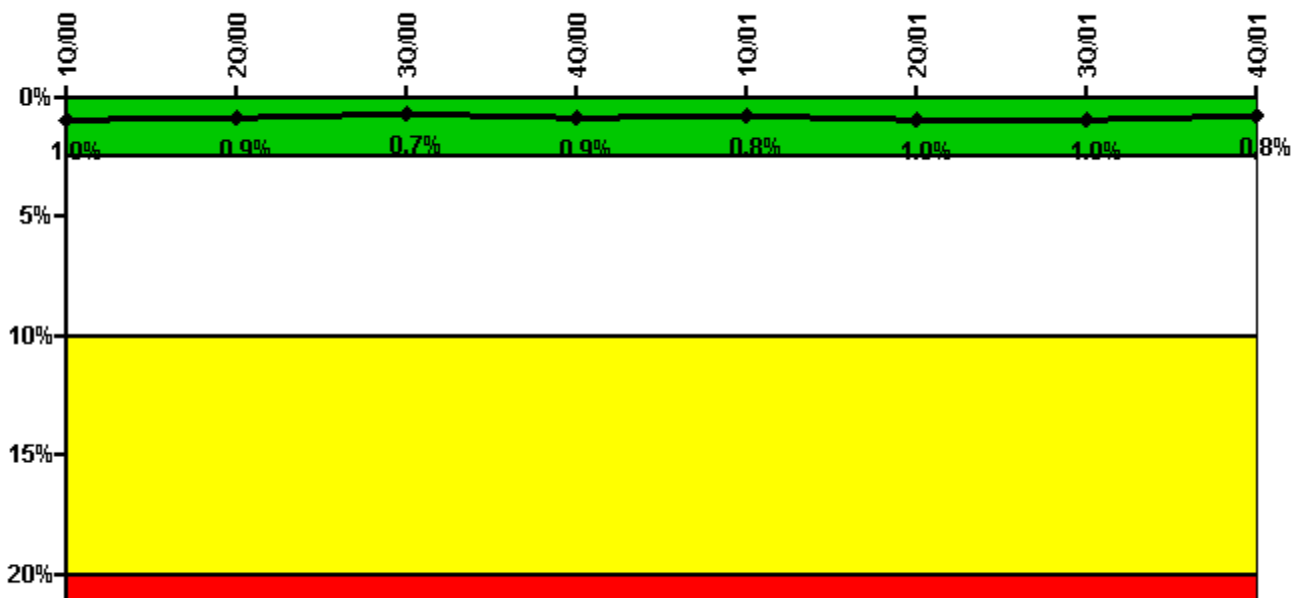
Thresholds: White > 6.0

#### Notes

Unplanned Power Changes per 7000 Critical Hrs	1Q/00	2Q/00	3Q/00	4Q/00	1Q/01	2Q/01	3Q/01	4Q/01
Unplanned power changes	0	0	0	0	0	0	0	0
Critical hours	2184.0	2183.0	1704.0	2084.3	2160.0	2152.5	1956.9	2180.9
Indicator value	0	0	0	0	0	0	0	0

Licensee Comments: none

### Safety System Unavailability, Emergency AC Power, >2EDG



Thresholds: White > 2.5% Yellow > 10.0% Red > 20.0%

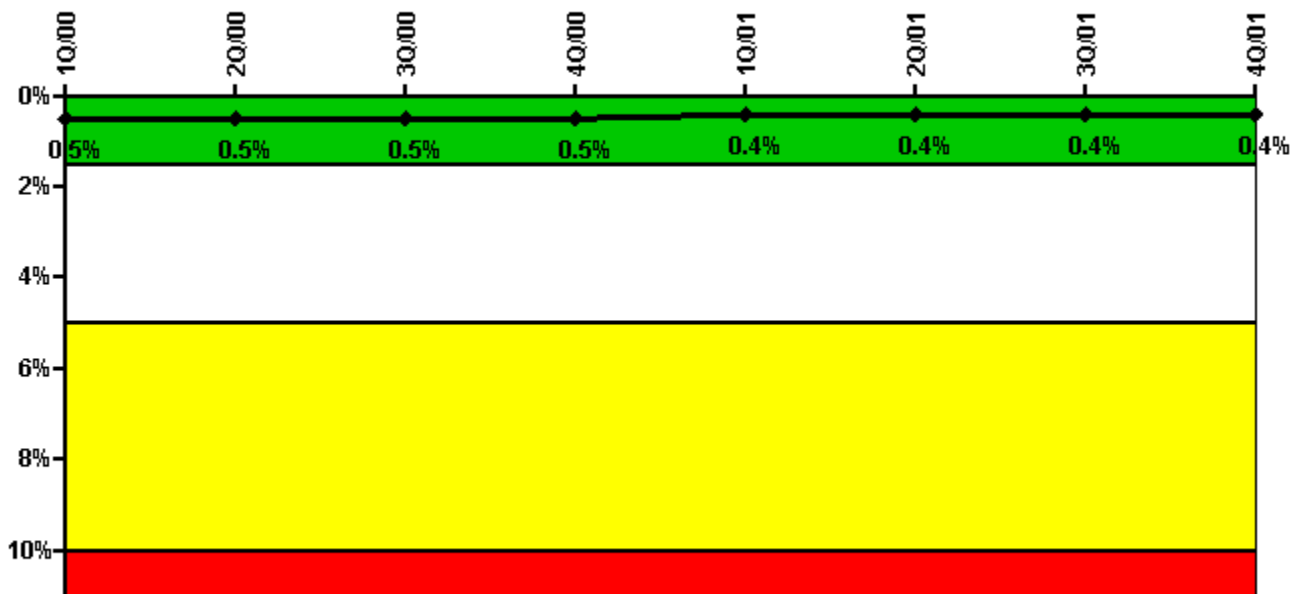
#### Notes

Safety System Unavailability, Emergency AC Power, >2EDG	1Q/00	2Q/00	3Q/00	4Q/00	1Q/01	2Q/01	3Q/01	4Q/01
<b>Train 1</b>								
Planned unavailable hours	20.91	40.21	1.70	44.64	2.24	30.21	2.03	14.73
Unplanned unavailable hours	0	0	0	0	0	8.52	0	0
Fault exposure hours	0	0	0	0	0	1.75	0	0
Effective Reset hours	0	0	0	0	0	0	0	0
Required hours	2184.00	2183.00	2086.48	2209.00	2160.00	2183.00	2208.00	2209.00
<b>Train 2</b>								
Planned unavailable hours	2.00	42.32	1.84	149.95	3.44	59.69	2.05	1.15
Unplanned unavailable hours	0	0	0	0	0	0	0	0
Fault exposure hours	0	25.08	0	0	0	0	0	0
Effective Reset hours	0	0	0	0	0	0	0	0
Required hours	2184.00	2183.00	1867.37	2209.00	2160.00	2183.00	2123.63	2209.00
<b>Train 3</b>								
Planned unavailable hours	44.23	4.70	2.04	26.27	2.80	47.37	2.42	7.01
Unplanned unavailable hours	0	0	0	0	0	0	0	0
Fault exposure hours	0	0	0	0	0	0	0	0
Effective Reset hours	0	0	0	0	0	0	0	0
Required hours	2184.00	2183.00	2086.48	2209.00	2160.00	2183.00	2208.00	2209.00
<b>Train 4</b>								
Planned unavailable hours	42.04	6.13	16.98	31.78	2.84	40.30	4.88	9.20
Unplanned unavailable hours	0	0	0	0	0	0	0	0
Fault exposure hours	0	0	0	0	0	0	0	0
Effective Reset hours	0	0	0	0	0	0	0	0
Required hours	2184.00	2183.00	1867.37	2209.00	2160.00	2183.00	2123.63	2209.00
<b>Indicator value</b>	<b>1.0%</b>	<b>0.9%</b>	<b>0.7%</b>	<b>0.9%</b>	<b>0.8%</b>	<b>1.0%</b>	<b>1.0%</b>	<b>0.8%</b>

Licensee Comments:

4Q/01:

### Safety System Unavailability, High Pressure Injection System (HPSI)



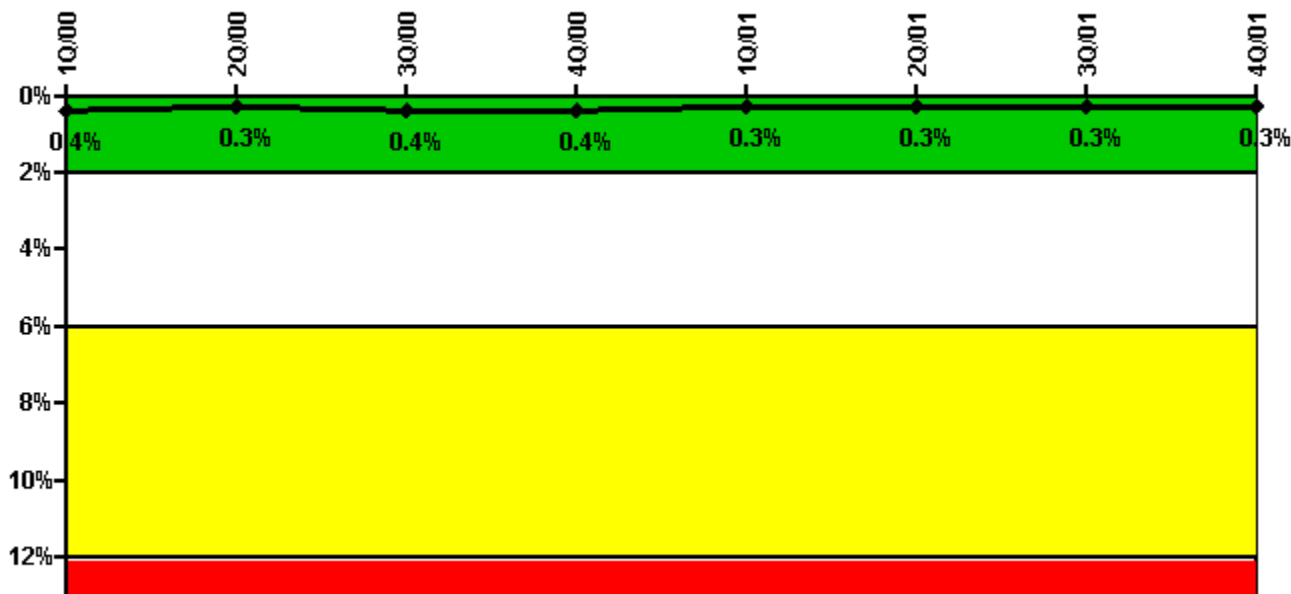
Thresholds: White > 1.5% Yellow > 5.0% Red > 10.0%

#### Notes

Safety System Unavailability, High Pressure Injection System (HPSI)	1Q/00	2Q/00	3Q/00	4Q/00	1Q/01	2Q/01	3Q/01	4Q/01
<b>Train 1</b>								
Planned unavailable hours	27.90	6.90	7.90	0.40	21.00	0.10	0.20	0.80
Unplanned unavailable hours	0	0	0	0	0	0	0.30	0
Fault exposure hours	0	0	0	0	0	0	0	0
Effective Reset hours	0	0	0	0	0	0	0	0
Required hours	2184.00	2183.00	1715.10	2145.00	2160.00	2183.00	2123.60	2209.00
<b>Train 2</b>								
Planned unavailable hours	0	10.30	0	0	0	13.70	0.30	0
Unplanned unavailable hours	0	0	0	0	0	0	0.10	0
Fault exposure hours	0	0	0	0	0	0	0	0
Effective Reset hours	0	0	0	0	0	0	0	0
Required hours	2184.00	2183.00	1711.10	2147.00	2160.00	2183.00	2014.00	2209.00
<b>Train 3</b>								
Planned unavailable hours	1.00	23.50	0.50	2.10	1.60	1.30	5.60	16.10
Unplanned unavailable hours	0	0	0	0	0	0	0.30	0
Fault exposure hours	0	0	0	0	0	0	0	0
Effective Reset hours	0	0	0	0	0	0	0	0
Required hours	2184.00	2183.00	1711.10	2137.80	2160.00	2183.00	2014.00	2209.00
<b>Train 4</b>								
Planned unavailable hours	0.50	39.70	0.60	2.70	0.50	1.00	20.60	2.40
Unplanned unavailable hours	0	0	0	0	0	0	0	0
Fault exposure hours	0	0	0	0	0	0	0	0
Effective Reset hours	0	0	0	0	0	0	0	0
Required hours	2184.00	2183.00	1711.10	2137.80	2160.00	2183.00	2014.00	2209.00
<b>Indicator value</b>	<b>0.5%</b>	<b>0.5%</b>	<b>0.5%</b>	<b>0.5%</b>	<b>0.4%</b>	<b>0.4%</b>	<b>0.4%</b>	<b>0.4%</b>

Licensee Comments: none

### Safety System Unavailability, Heat Removal System (AFW)



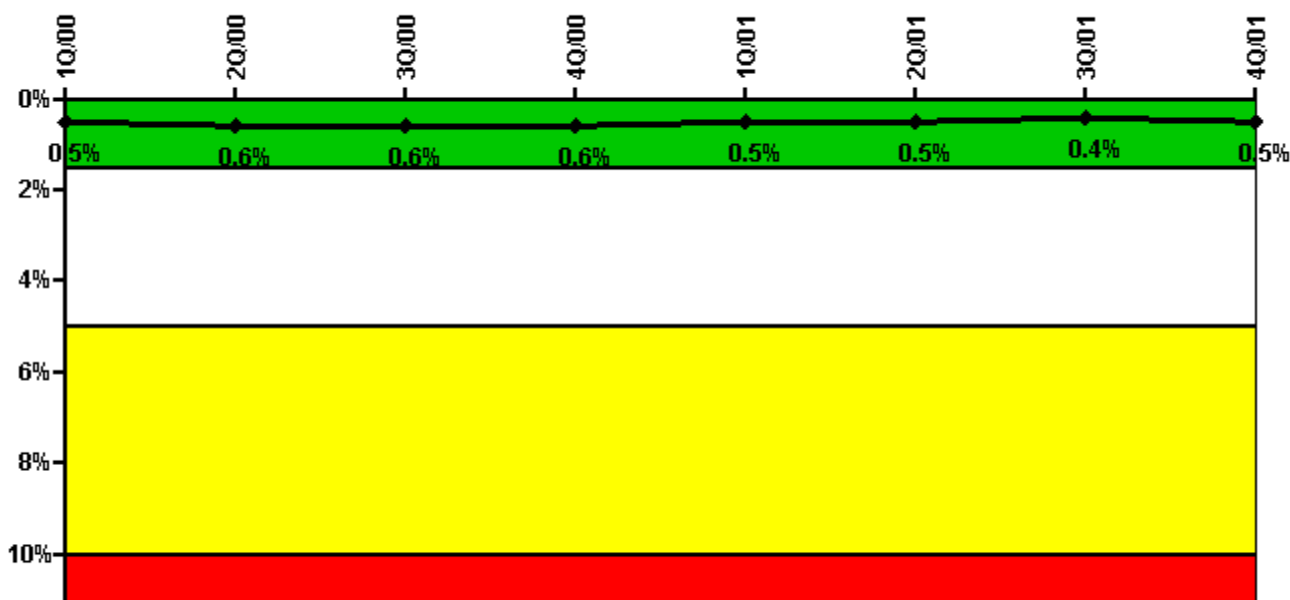
Thresholds: White > 2.0% Yellow > 6.0% Red > 12.0%

#### Notes

Safety System Unavailability, Heat Removal System (AFW)	1Q/00	2Q/00	3Q/00	4Q/00	1Q/01	2Q/01	3Q/01	4Q/01
<b>Train 1</b>								
Planned unavailable hours	0.10	30.50	0	0.80	0.10	0.02	3.70	22.20
Unplanned unavailable hours	0	0	0	0	0	0	0.90	0
Fault exposure hours	0	0	0	0	0	0	0	0
Effective Reset hours	0	0	0	0	0	0	0	0
Required hours	2184.00	2183.00	1714.10	2113.80	2160.00	2183.00	2014.00	2209.00
<b>Train 2</b>								
Planned unavailable hours	24.80	0	25.70	6.10	0.50	29.40	8.00	11.83
Unplanned unavailable hours	0	0	0	0	0	0	1.10	0
Fault exposure hours	0	0	0	0	0	0	0	0
Effective Reset hours	0	0	0	0	0	0	0	0
Required hours	2184.00	2183.00	1714.10	2113.80	2160.00	2183.00	2014.00	2209.00
<b>Train 3</b>								
Planned unavailable hours	2.10	2.70	18.50	11.65	6.40	0.70	2.00	8.04
Unplanned unavailable hours	0	0	0	0	0	0	0	0
Fault exposure hours	0	0	0	0	0	0	0	0
Effective Reset hours	0	0	0	0	0	0	0	0
Required hours	2184.00	2183.00	1711.10	2113.80	2160.00	2183.00	2014.00	2209.00
<b>Indicator value</b>	<b>0.4%</b>	<b>0.3%</b>	<b>0.4%</b>	<b>0.4%</b>	<b>0.3%</b>	<b>0.3%</b>	<b>0.3%</b>	<b>0.3%</b>

Licensee Comments: none

### Safety System Unavailability, Residual Heat Removal System



Thresholds: White > 1.5% Yellow > 5.0% Red > 10.0%

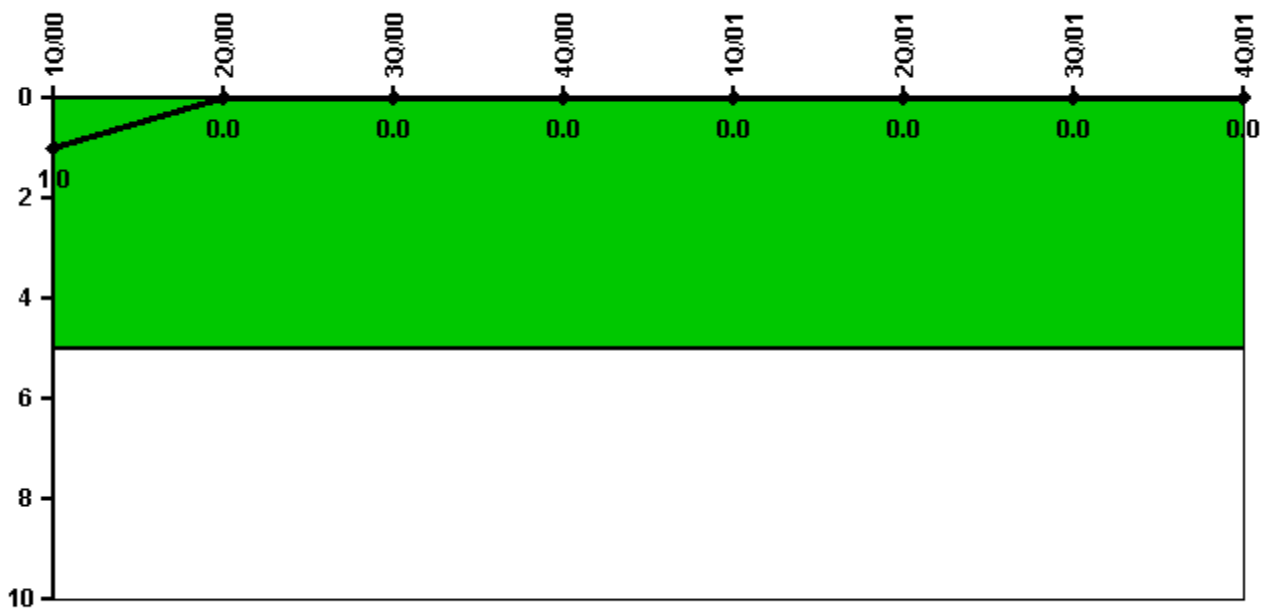
#### Notes

Safety System Unavailability, Residual Heat Removal System	1Q/00	2Q/00	3Q/00	4Q/00	1Q/01	2Q/01	3Q/01	4Q/01
<b>Train 1</b>								
Planned unavailable hours	1.70	41.00	1.60	2.45	2.30	2.35	2.30	27.82
Unplanned unavailable hours	0	0	0	0	0	0	0.30	0
Fault exposure hours	0	0	0	0	0	0	0	0
Effective Reset hours	0	0	0	0	0	0	0	0
Required hours	2184.00	2183.00	2144.10	2209.00	2160.00	2183.00	2208.00	2209.00
<b>Train 2</b>								
Planned unavailable hours	1.40	47.70	1.50	1.10	1.70	2.90	2.20	28.90
Unplanned unavailable hours	0	0	0	0	0	0	0	0
Fault exposure hours	0	0	0	0	0	0	0	0
Effective Reset hours	0	0	0	0	0	0	0	0
Required hours	2184.00	2183.00	2144.10	2209.00	2160.00	2183.00	2208.00	2209.00
<b>Indicator value</b>	<b>0.5%</b>	<b>0.6%</b>	<b>0.6%</b>	<b>0.6%</b>	<b>0.5%</b>	<b>0.5%</b>	<b>0.4%</b>	<b>0.5%</b>

Licensee Comments:

4Q/01: The above data does not include fault exposure hours associated with a partial blockage of an ERCW line to the 1B RHR pump room cooler discovered on 10/24/01. Although TVA has concluded that the cooler was functional, the issue is still under review by NRC region II inspectors.

### Safety System Functional Failures (PWR)



Thresholds: White > 5.0

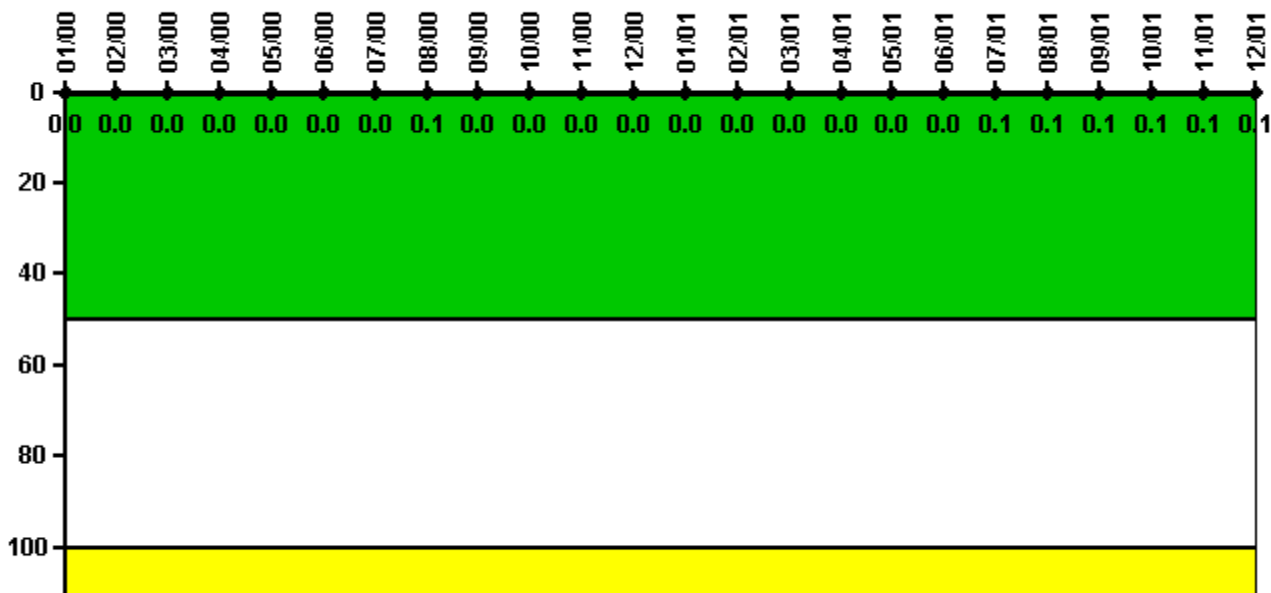
#### Notes

Safety System Functional Failures (PWR)	1Q/00	2Q/00	3Q/00	4Q/00	1Q/01	2Q/01	3Q/01	4Q/01
Safety System Functional Failures	0	0	0	0	0	0	0	0
Indicator value	1	0	0	0	0	0	0	0

Licensee Comments: none



### Reactor Coolant System Activity



Thresholds: White > 50.0 Yellow > 100.0

### Notes

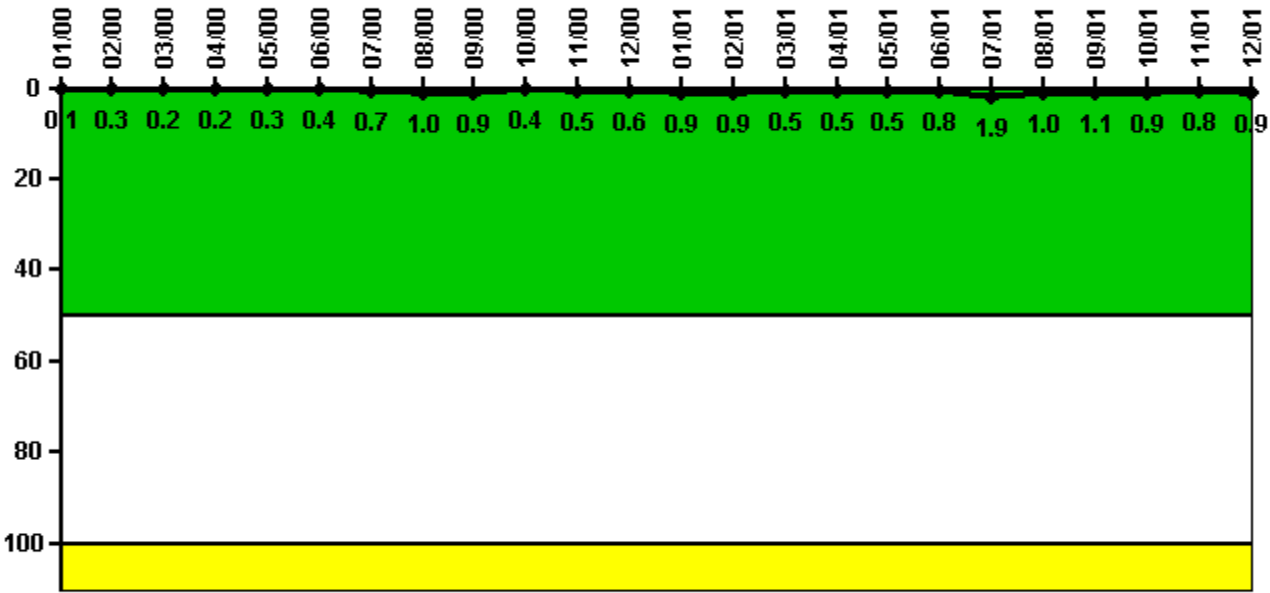
Reactor Coolant System Activity	1/00	2/00	3/00	4/00	5/00	6/00	7/00	8/00	9/00	10/00	11/00	12/00
Maximum activity	0.000320	0.000300	0.000300	0.000325	0.000310	0.000330	0.000490	0.000564	0.000270	0.000204	0.000231	0.000230
Technical specification limit	1.0	1.0	1.0	1.0	1.0	1.0	1.0	1.0	1.0	1.0	1.0	1.0
Indicator value	0	0	0	0	0	0	0	0.1	0	0	0	0

Reactor Coolant System Activity	1/01	2/01	3/01	4/01	5/01	6/01	7/01	8/01	9/01	10/01	11/01	12/01
Maximum activity	0.000233	0.000242	0.000248	0.000250	0.000250	0.000274	0.000267	0.000282	0.000281	0.000297	0.000301	0.000291
Technical specification limit	1.0	1.0	1.0	1.0	1.0	1.0	0.3	0.3	0.3	0.3	0.3	0.3
Indicator value	0	0	0	0	0	0	0.1	0.1	0.1	0.1	0.1	0.1

Licensee Comments: none

### Reactor Coolant System Leakage



Thresholds: White > 50.0 Yellow > 100.0

#### Notes

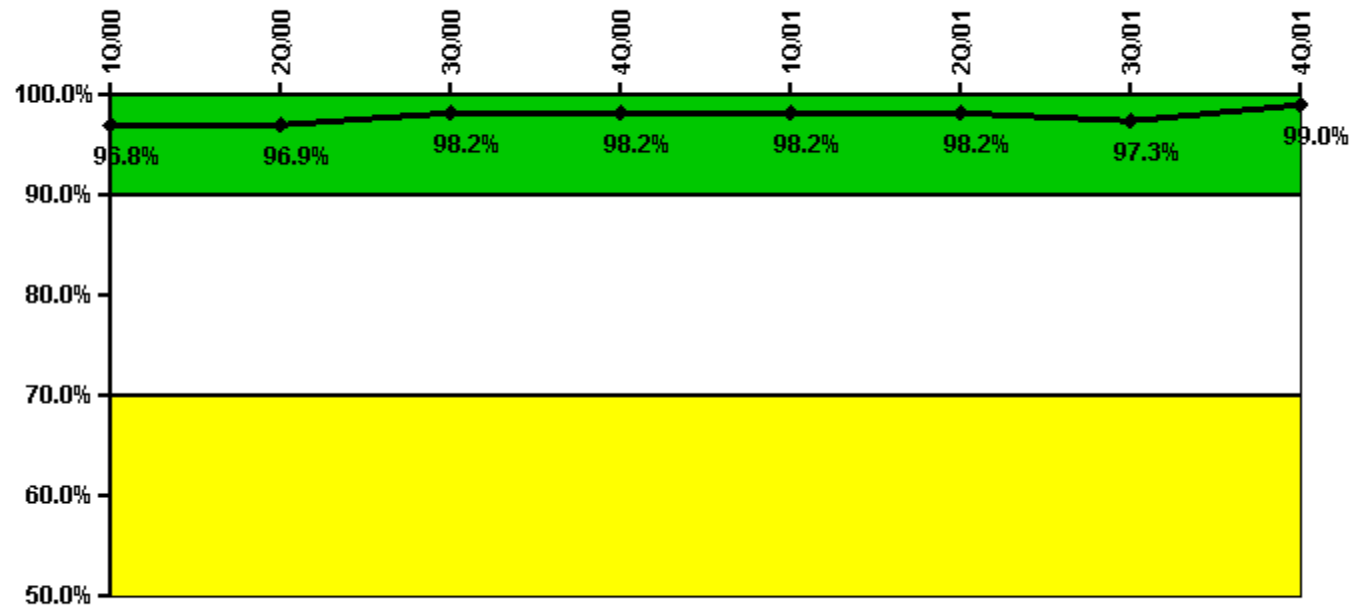
Reactor Coolant System Leakage	1/00	2/00	3/00	4/00	5/00	6/00	7/00	8/00	9/00	10/00	11/00	12/00
Maximum leakage	0.010	0.030	0.020	0.020	0.030	0.040	0.070	0.100	0.090	0.040	0.050	0.060
Technical specification limit	10.0	10.0	10.0	10.0	10.0	10.0	10.0	10.0	10.0	10.0	10.0	10.0
Indicator value	0.1	0.3	0.2	0.2	0.3	0.4	0.7	1.0	0.9	0.4	0.5	0.6

Reactor Coolant System Leakage	1/01	2/01	3/01	4/01	5/01	6/01	7/01	8/01	9/01	10/01	11/01	12/01
Maximum leakage	0.090	0.090	0.050	0.050	0.050	0.080	0.190	0.100	0.110	0.090	0.080	0.090
Technical specification limit	10.0	10.0	10.0	10.0	10.0	10.0	10.0	10.0	10.0	10.0	10.0	10.0
Indicator value	0.9	0.9	0.5	0.5	0.5	0.8	1.9	1.0	1.1	0.9	0.8	0.9

Licensee Comments: none

### Drill/Exercise Performance



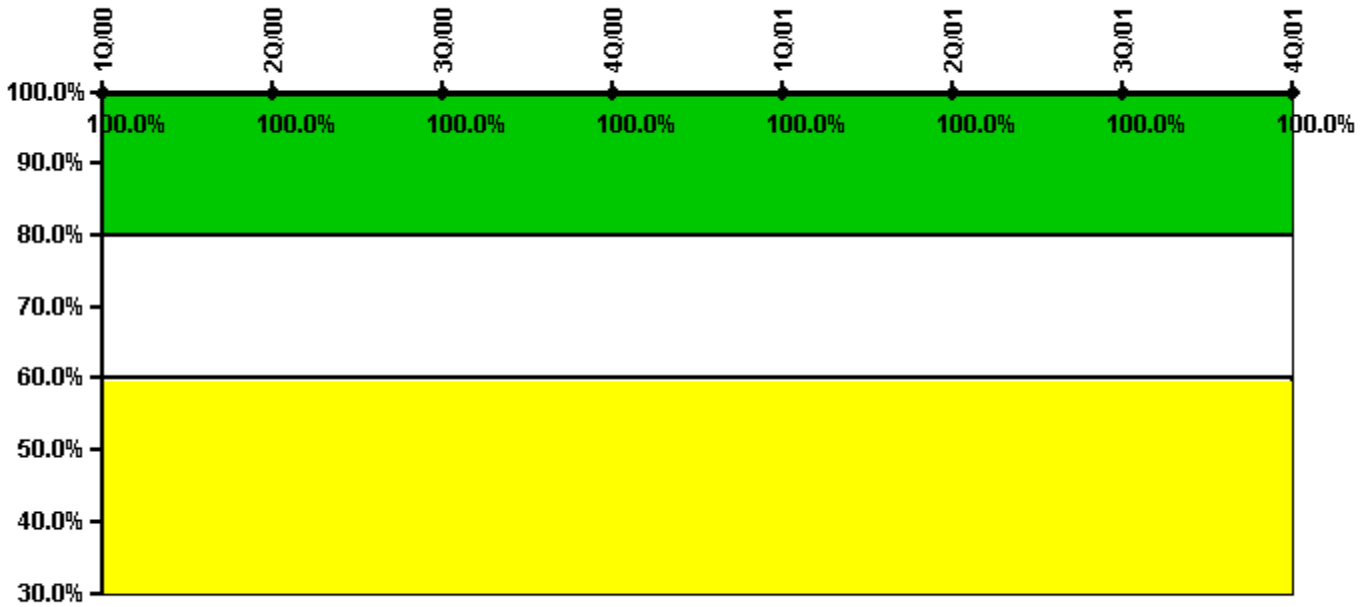
Thresholds: White < 90.0% Yellow < 70.0%

### Notes

Drill/Exercise Performance	1Q/00	2Q/00	3Q/00	4Q/00	1Q/01	2Q/01	3Q/01	4Q/01
Successful opportunities	0	6.0	24.0	6.0	2.0	0	8.0	49.0
Total opportunities	0	6.0	24.0	6.0	2.0	0	8.0	50.0
Indicator value	96.8%	96.9%	98.2%	98.2%	98.2%	98.2%	97.3%	99.0%

Licensee Comments: none

### ERO Drill Participation



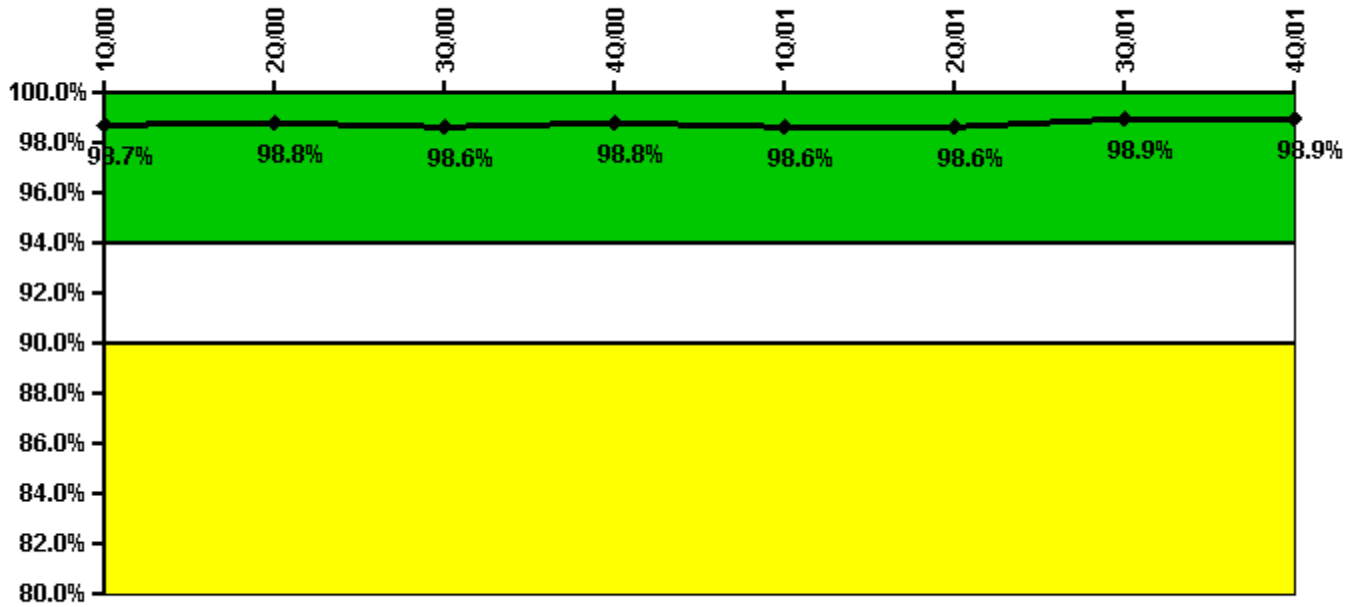
Thresholds: White < 80.0% Yellow < 60.0%

### Notes

ERO Drill Participation	1Q/00	2Q/00	3Q/00	4Q/00	1Q/01	2Q/01	3Q/01	4Q/01
Participating Key personnel	49.0	48.0	48.0	46.0	49.0	48.0	47.0	50.0
Total Key personnel	49.0	48.0	48.0	46.0	49.0	48.0	47.0	50.0
Indicator value	100.0%	100.0%	100.0%	100.0%	100.0%	100.0%	100.0%	100.0%

Licensee Comments: none

### Alert & Notification System



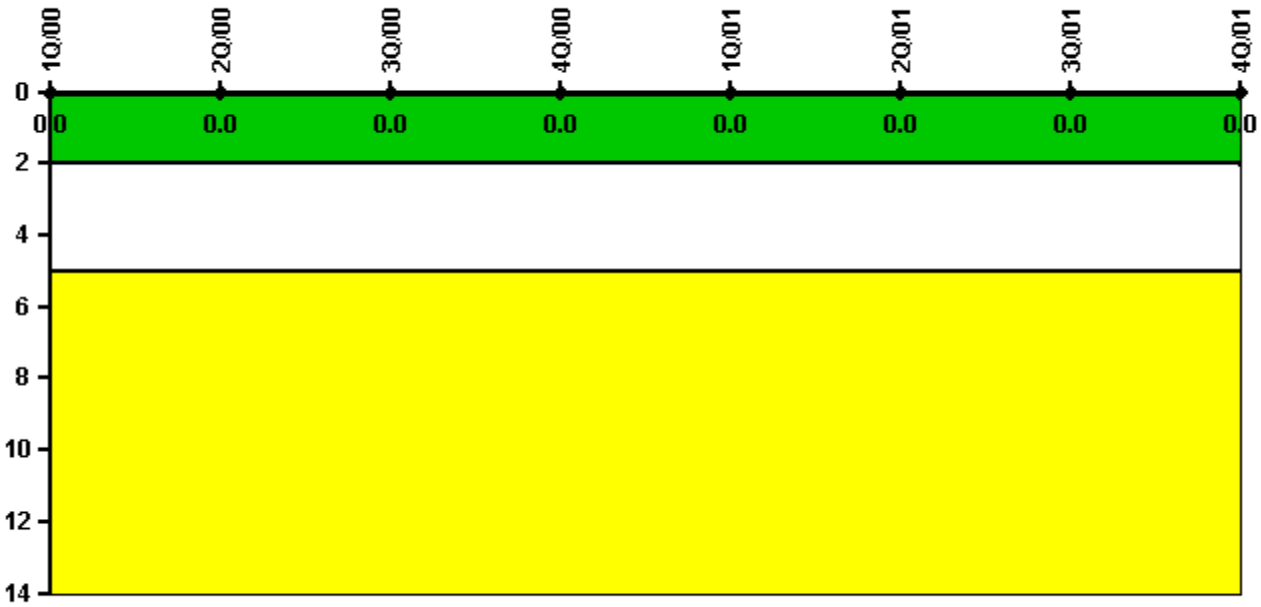
Thresholds: White < 94.0% Yellow < 90.0%

#### Notes

Alert & Notification System	1Q/00	2Q/00	3Q/00	4Q/00	1Q/01	2Q/01	3Q/01	4Q/01
Successful siren-tests	881	880	779	784	681	782	886	882
Total sirens-tests	891	891	792	792	693	792	891	891
Indicator value	98.7%	98.8%	98.6%	98.8%	98.6%	98.6%	98.9%	98.9%

Licensee Comments: none

### Occupational Exposure Control Effectiveness



Thresholds: White > 2.0 Yellow > 5.0

#### Notes

Occupational Exposure Control Effectiveness	1Q/00	2Q/00	3Q/00	4Q/00	1Q/01	2Q/01	3Q/01	4Q/01
High radiation area occurrences	0	0	0	0	0	0	0	0
Very high radiation area occurrences	0	0	0	0	0	0	0	0
Unintended exposure occurrences	0	0	0	0	0	0	0	0
<b>Indicator value</b>	<b>0</b>	<b>0</b>	<b>0</b>	<b>0</b>	<b>0</b>	<b>0</b>	<b>0</b>	<b>0</b>

Licensee Comments:

4Q/01:

### RETS/ODCM Radiological Effluent



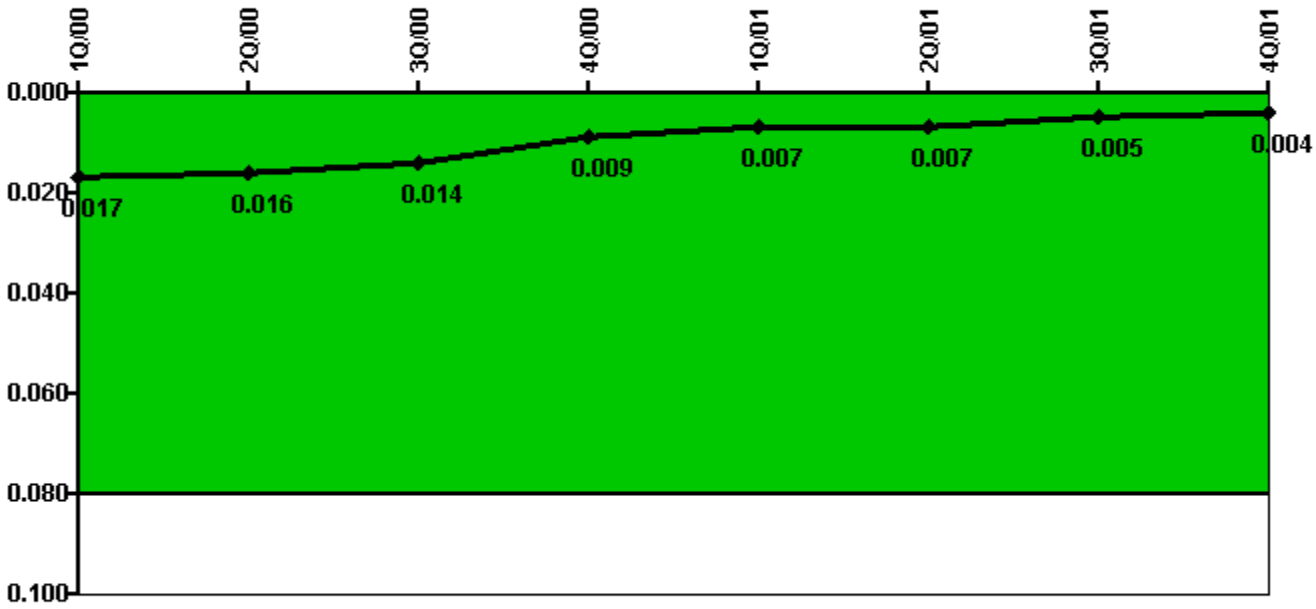
Thresholds: White > 1.0 Yellow > 3.0

#### Notes

RETS/ODCM Radiological Effluent	1Q/00	2Q/00	3Q/00	4Q/00	1Q/01	2Q/01	3Q/01	4Q/01
RETS/ODCM occurrences	0	0	0	0	0	0	0	0
Indicator value	0	0	0	0	0	0	0	0

Licensee Comments: none

### Protected Area Security Performance Index



Thresholds: White > 0.080

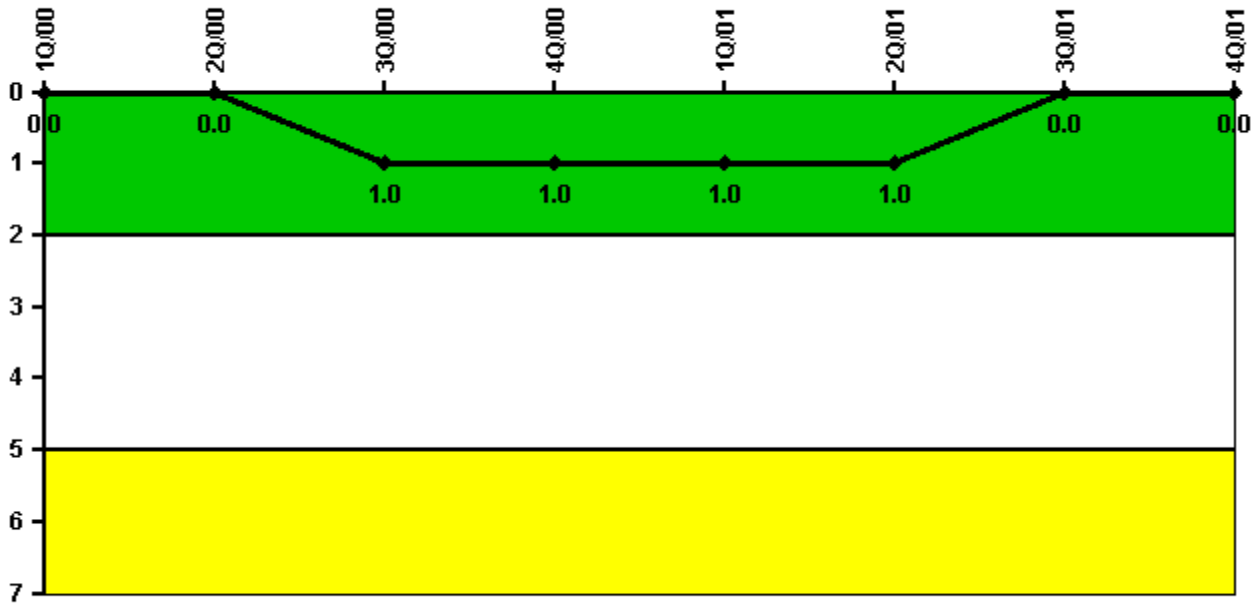
#### Notes

Protected Area Security Performance Index	1Q/00	2Q/00	3Q/00	4Q/00	1Q/01	2Q/01	3Q/01	4Q/01
IDS compensatory hours	100.70	93.10	77.80	49.50	30.60	81.30	17.70	22.90
CCTV compensatory hours	1.8	4.5	24.9	13.4	4.3	2.6	1.6	6.2
IDS normalization factor	2.40	2.40	2.40	2.40	2.40	2.40	2.40	2.40
CCTV normalization factor	2.1	2.1	2.1	2.1	2.1	2.1	2.1	2.1
<b>Index Value</b>	<b>0.017</b>	<b>0.016</b>	<b>0.014</b>	<b>0.009</b>	<b>0.007</b>	<b>0.007</b>	<b>0.005</b>	<b>0.004</b>

Licensee Comments: none



### Personnel Screening Program



Thresholds: White > 2.0 Yellow > 5.0

#### Notes

Personnel Screening Program	1Q/00	2Q/00	3Q/00	4Q/00	1Q/01	2Q/01	3Q/01	4Q/01
Program failures	0	0	1	0	0	0	0	0
Indicator value	0	0	1	1	1	1	0	0

Licensee Comments: none

### FFD/Personnel Reliability



Thresholds: White > 2.0 Yellow > 5.0

### Notes

FFD/Personnel Reliability	1Q/00	2Q/00	3Q/00	4Q/00	1Q/01	2Q/01	3Q/01	4Q/01
Program Failures	0	0	0	0	0	0	0	0
Indicator value	0	0	0	0	0	0	0	0

Licensee Comments: none

▲ [PI Summary](#) | [Inspection Findings Summary](#) | [Action Matrix Summary](#) | [Reactor Oversight Process](#)

Last Modified: March 15, 2002