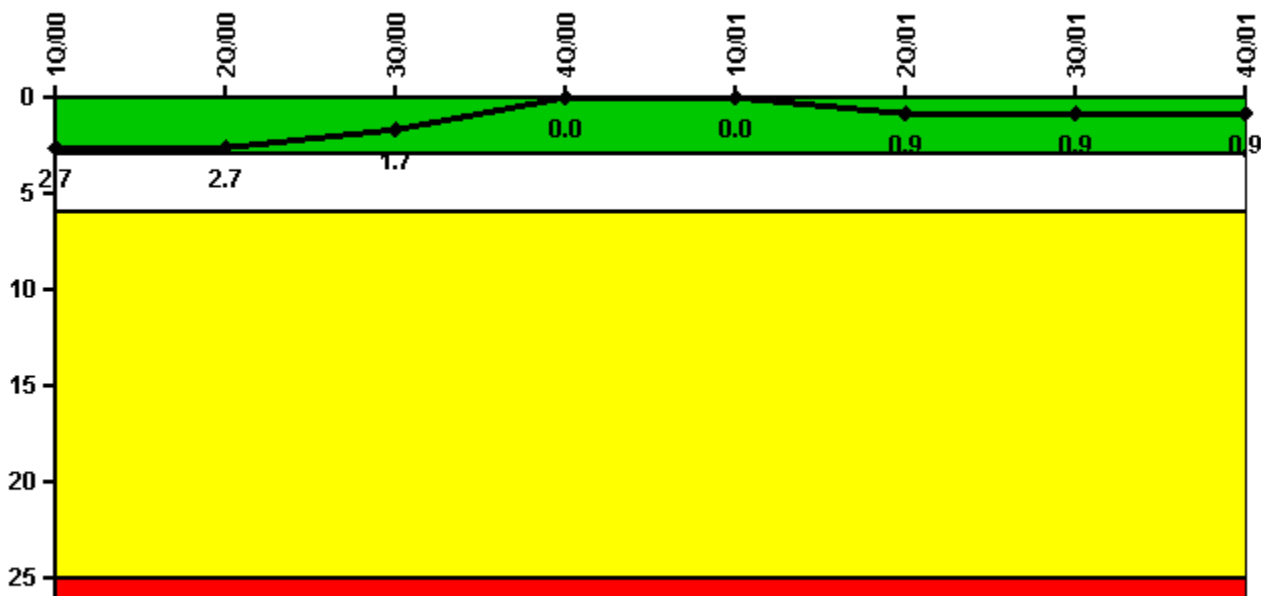


Saint Lucie 1

4Q/2001 Performance Indicators

Licensee's General Comments: none

Unplanned Scrams per 7000 Critical Hrs



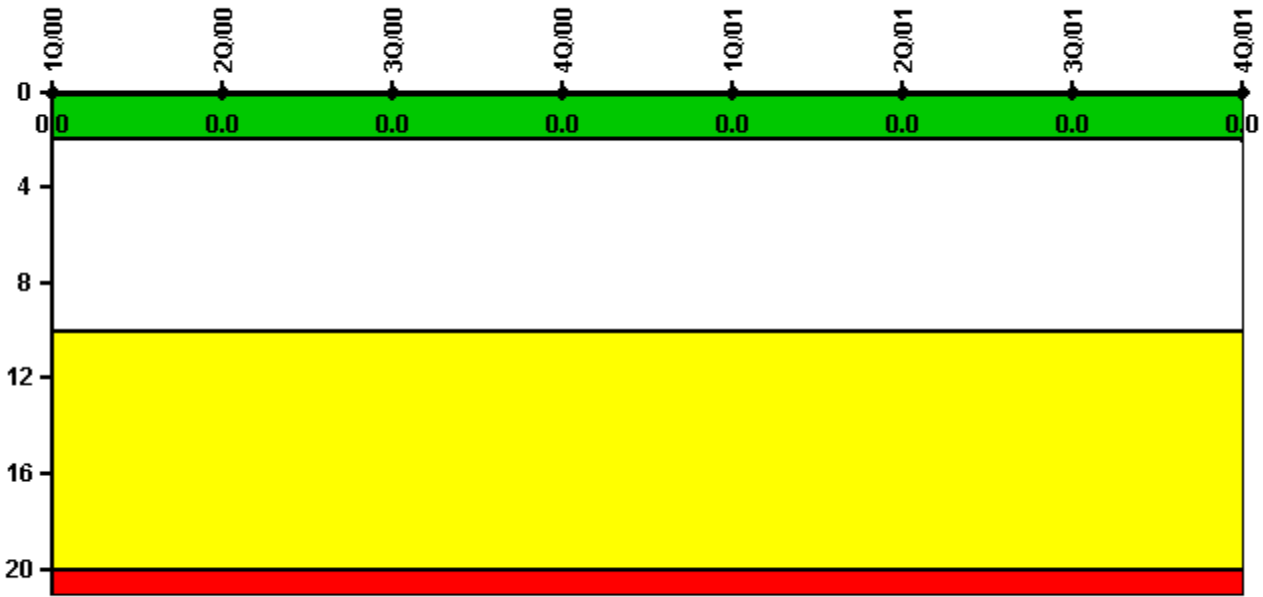
Thresholds: White > 3.0 Yellow > 6.0 Red > 25.0

Notes

Unplanned Scrams per 7000 Critical Hrs	1Q/00	2Q/00	3Q/00	4Q/00	1Q/01	2Q/01	3Q/01	4Q/01
Unplanned scrams	0	0	0	0	0	1.0	0	0
Critical hours	2184.0	2183.0	2208.0	2209.0	2160.0	1505.2	2208.0	2125.4
Indicator value	2.7	2.7	1.7	0	0	0.9	0.9	0.9

Licensee Comments: none

Scrams with Loss of Normal Heat Removal



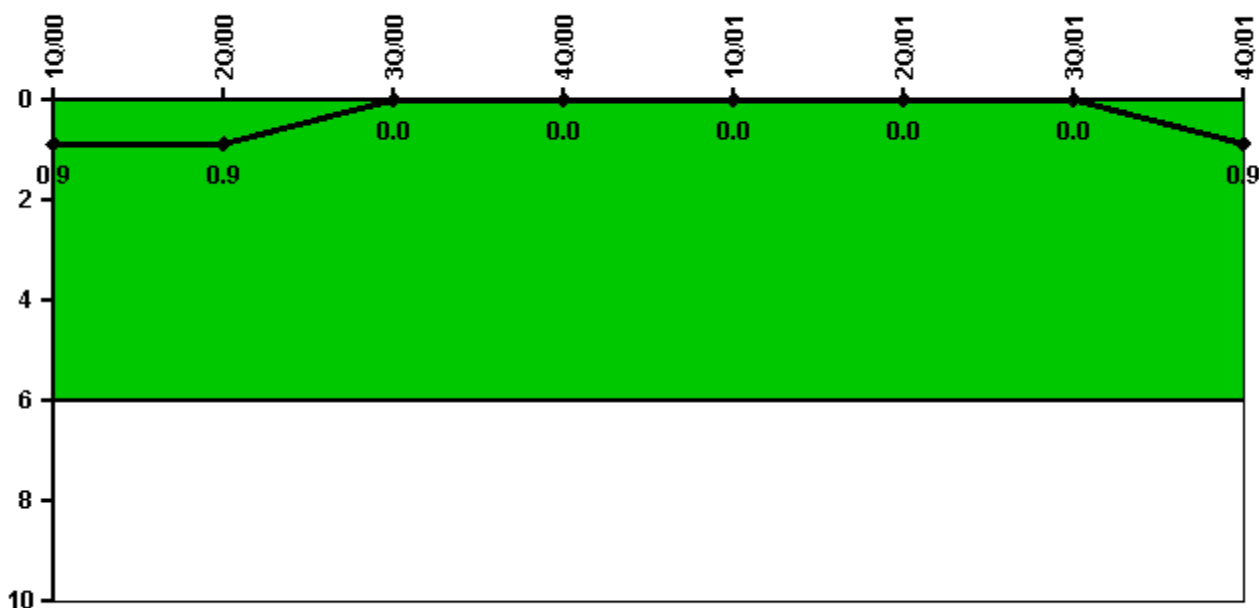
Thresholds: White > 2.0 Yellow > 10.0 Red > 20.0

Notes

Scrams with Loss of Normal Heat Removal	1Q/00	2Q/00	3Q/00	4Q/00	1Q/01	2Q/01	3Q/01	4Q/01
Scrams	0	0	0	0	0	0	0	0
Indicator value	0	0	0	0	0	0	0	0

Licensee Comments: none

Unplanned Power Changes per 7000 Critical Hrs



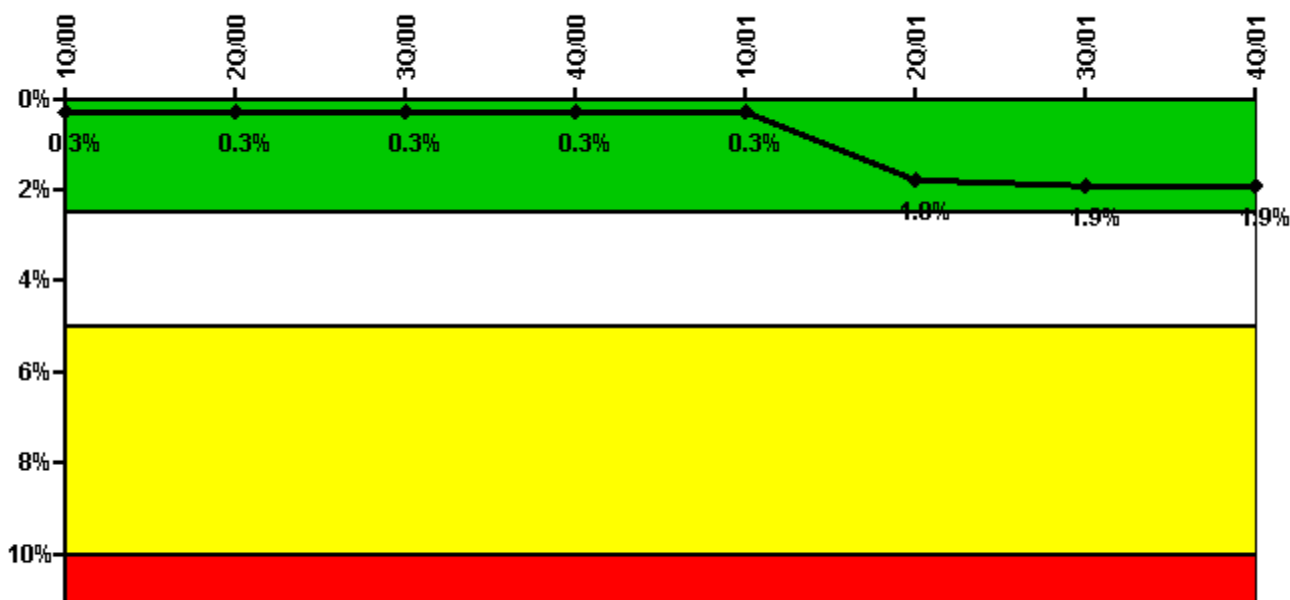
Thresholds: White > 6.0

Notes

Unplanned Power Changes per 7000 Critical Hrs	1Q/00	2Q/00	3Q/00	4Q/00	1Q/01	2Q/01	3Q/01	4Q/01
Unplanned power changes	0	0	0	0	0	0	0	1.0
Critical hours	2184.0	2183.0	2208.0	2209.0	2160.0	1505.2	2208.0	2125.4
Indicator value	0.9	0.9	0	0	0	0	0	0.9

Licensee Comments: none

Safety System Unavailability, Emergency AC Power



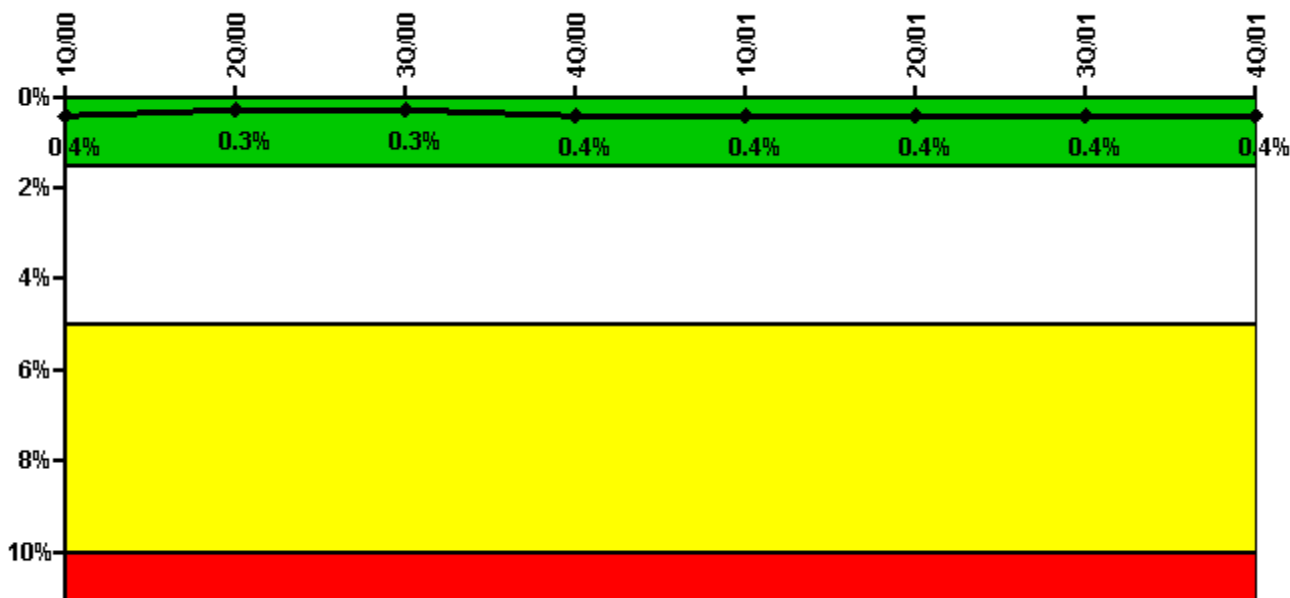
Thresholds: White > 2.5% Yellow > 5.0% Red > 10.0%

Notes

Safety System Unavailability, Emergency AC Power	1Q/00	2Q/00	3Q/00	4Q/00	1Q/01	2Q/01	3Q/01	4Q/01
Train 1								
Planned unavailable hours	3.00	4.20	6.90	2.90	8.10	3.00	51.70	4.80
Unplanned unavailable hours	0	9.70	0	0	0	0	0	0
Fault exposure hours	0	0	0	0	0	0	0	0
Effective Reset hours	0	0	0	0	0	0	0	0
Required hours	2184.00	2183.00	2208.00	2209.00	2160.00	1945.60	2208.00	2208.00
Train 2								
Planned unavailable hours	5.20	4.00	3.90	4.10	3.90	0	4.60	3.30
Unplanned unavailable hours	0	0	0	0	0	190.00	0	0
Fault exposure hours	0	0	0	0	0	555.00	0	0
Effective Reset hours	0	0	0	0	0	0	0	0
Required hours	2184.00	2183.00	2208.00	2209.00	2160.00	1945.60	2208.00	2208.00
Indicator value	0.3%	0.3%	0.3%	0.3%	0.3%	1.8%	1.9%	1.9%

Licensee Comments: none

Safety System Unavailability, High Pressure Injection System (HPSI)



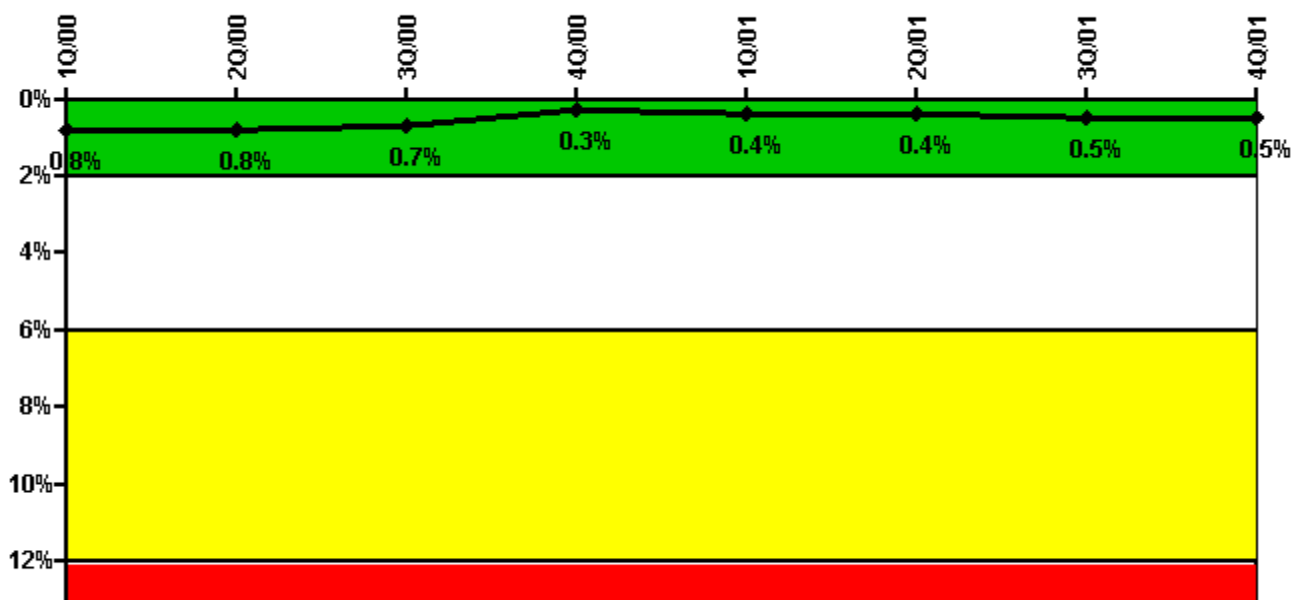
Thresholds: White > 1.5% Yellow > 5.0% Red > 10.0%

Notes

Safety System Unavailability, High Pressure Injection System (HPSI)	1Q/00	2Q/00	3Q/00	4Q/00	1Q/01	2Q/01	3Q/01	4Q/01
Train 1								
Planned unavailable hours	1.90	3.20	1.60	24.30	1.00	0.50	0.40	0.40
Unplanned unavailable hours	0	0	0	0	0	0	0	0
Fault exposure hours	0	0	0	0	0	0	0	0
Effective Reset hours	0	0	0	0	0	0	0	0
Required hours	2184.00	2183.00	2208.00	2209.00	2160.00	1706.20	2208.00	2193.00
Train 2								
Planned unavailable hours	3.20	0.70	0.40	35.80	6.60	0.80	12.60	1.00
Unplanned unavailable hours	0	0	0	0	0	0	0	0
Fault exposure hours	0	0	0	0	0	0	0	0
Effective Reset hours	0	0	0	0	0	0	0	0
Required hours	2184.00	2183.00	2208.00	2209.00	2160.00	1706.20	2208.00	2193.00
Indicator value	0.4%	0.3%	0.3%	0.4%	0.4%	0.4%	0.4%	0.4%

Licensee Comments: none

Safety System Unavailability, Heat Removal System (AFW)



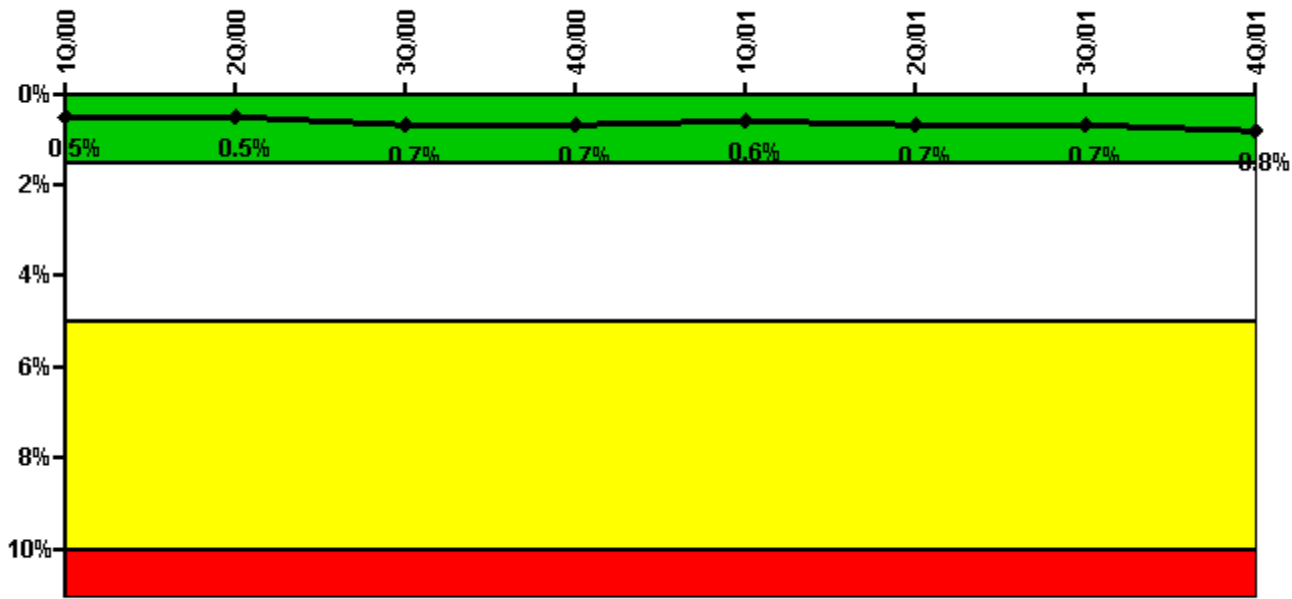
Thresholds: White > 2.0% Yellow > 6.0% Red > 12.0%

Notes

Safety System Unavailability, Heat Removal System (AFW)	1Q/00	2Q/00	3Q/00	4Q/00	1Q/01	2Q/01	3Q/01	4Q/01
Train 1								
Planned unavailable hours	35.10	0	0	2.90	2.30	1.40	4.50	4.20
Unplanned unavailable hours	0	0	0	0	0	0	0	0
Fault exposure hours	0	0	0	0	0	0	0	0
Effective Reset hours	0	0	0	0	0	0	0	0
Required hours	2184.00	2183.00	2208.00	2209.00	2160.00	1606.00	2208.00	2166.00
Train 2								
Planned unavailable hours	4.80	0	0	1.80	3.00	0.60	3.20	2.00
Unplanned unavailable hours	0	0	0	0	0	0	0	0
Fault exposure hours	0	0	0	0	0	0	0	0
Effective Reset hours	0	0	0	0	0	0	0	0
Required hours	2184.00	2183.00	2208.00	2209.00	2160.00	1606.00	2208.00	2166.00
Train 3								
Planned unavailable hours	17.30	0	1.37	16.20	32.60	0.80	8.60	5.90
Unplanned unavailable hours	0	0	0	0	0	1.70	0	1.80
Fault exposure hours	0	0	0	0	40.30	25.70	0	0
Effective Reset hours	0	0	0	0	0	0	0	0
Required hours	2184.00	2183.00	2208.00	2209.00	2160.00	1606.00	2208.00	2166.00
Indicator value	0.8%	0.8%	0.7%	0.3%	0.4%	0.4%	0.5%	0.5%

Licensee Comments: none

Safety System Unavailability, Residual Heat Removal System



Thresholds: White > 1.5% Yellow > 5.0% Red > 10.0%

Notes

Safety System Unavailability, Residual Heat Removal System	1Q/00	2Q/00	3Q/00	4Q/00	1Q/01	2Q/01	3Q/01	4Q/01
Train 1								
Planned unavailable hours	2.00	45.10	61.90	28.50	22.00	45.00	3.60	1.50
Unplanned unavailable hours	0	0	0	0	0	0	20.60	0
Fault exposure hours	0	0	0	0	0	0	0	0
Effective Reset hours	0	0	0	0	0	0	0	0
Required hours	2184.00	2183.00	2208.00	2209.00	2160.00	1578.00	2208.00	2173.30
Train 2								
Planned unavailable hours	3.20	37.60	53.90	21.40	29.50	10.90	0.40	14.80
Unplanned unavailable hours	0	0	0	0	0	0	0	0
Fault exposure hours	0	0	0	0	0	0	0	0
Effective Reset hours	0	0	0	0	0	0	0	0
Required hours	2184.00	2183.00	2208.00	2209.00	2160.00	1578.00	2208.00	2173.30
Train 3								
Planned unavailable hours	0	0	0	0	0	4.70	0	0
Unplanned unavailable hours	0	0	0	0	0	0	0	0
Fault exposure hours	0	0	0	0	0	0	0	0
Effective Reset hours	0	0	0	0	0	0	0	0
Required hours	0	0	0	0	0	578.30	0	43.00
Train 4								
Planned unavailable hours	0	0	0	0	0	0	0	0
Unplanned unavailable hours	0	0	0	0	0	0	0	0
Fault exposure hours	0	0	0	0	0	0	0	0
Effective Reset hours	0	0	0	0	0	0	0	0
Required hours	0	0	0	0	0	578.30	0	43.00
Indicator value	0.5%	0.5%	0.7%	0.7%	0.6%	0.7%	0.7%	0.8%

Licensee Comments:

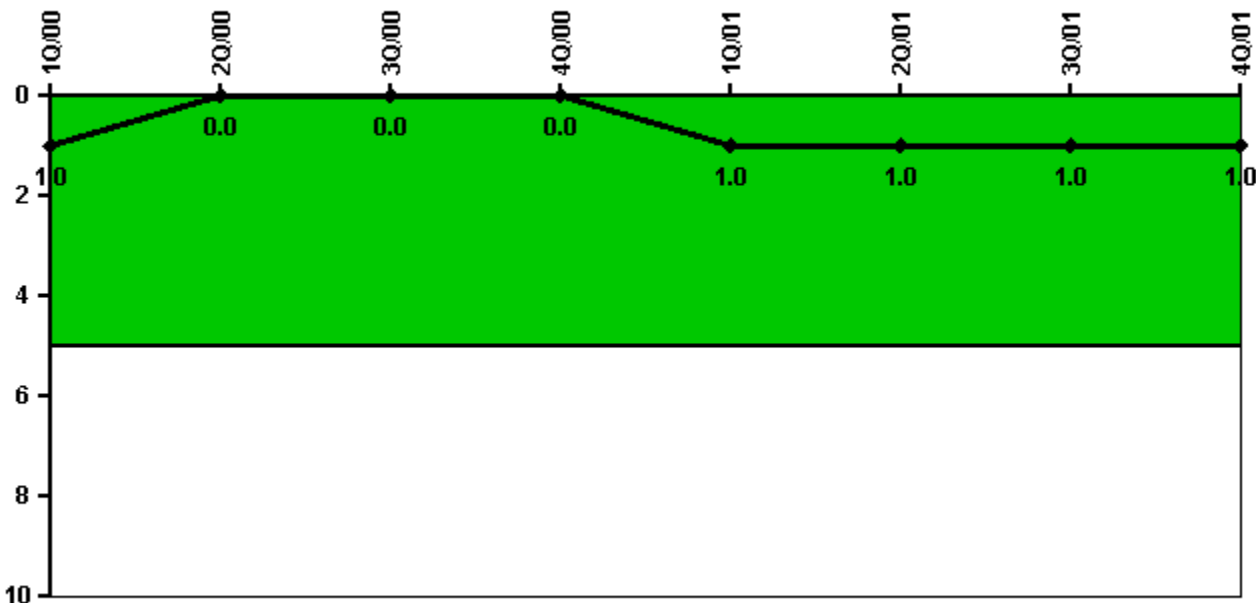
4Q/99: Recalculated and revised using historical data in accordance with NEI 99-02, Rev. 1 App. D Plant Specific Design Issues for CE NSSS RHR SSU performance option 2.

3Q/99: Recalculated and revised using historical data in accordance with NEI 99-02, Rev. 1 App. D Plant Specific Design Issues for CE NSSS RHR SSU performance option 2.

2Q/99: Recalculated and revised using historical data in accordance with NEI 99-02, Rev. 1 App. D Plant Specific Design Issues for CE NSSS RHR SSU performance option 2.

1Q/99: Recalculated and revised using historical data in accordance with NEI 99-02, Rev. 1 App. D Plant Specific Design Issues for CE NSSS RHR SSU performance option 2.

Safety System Functional Failures (PWR)



Thresholds: White > 5.0

Notes

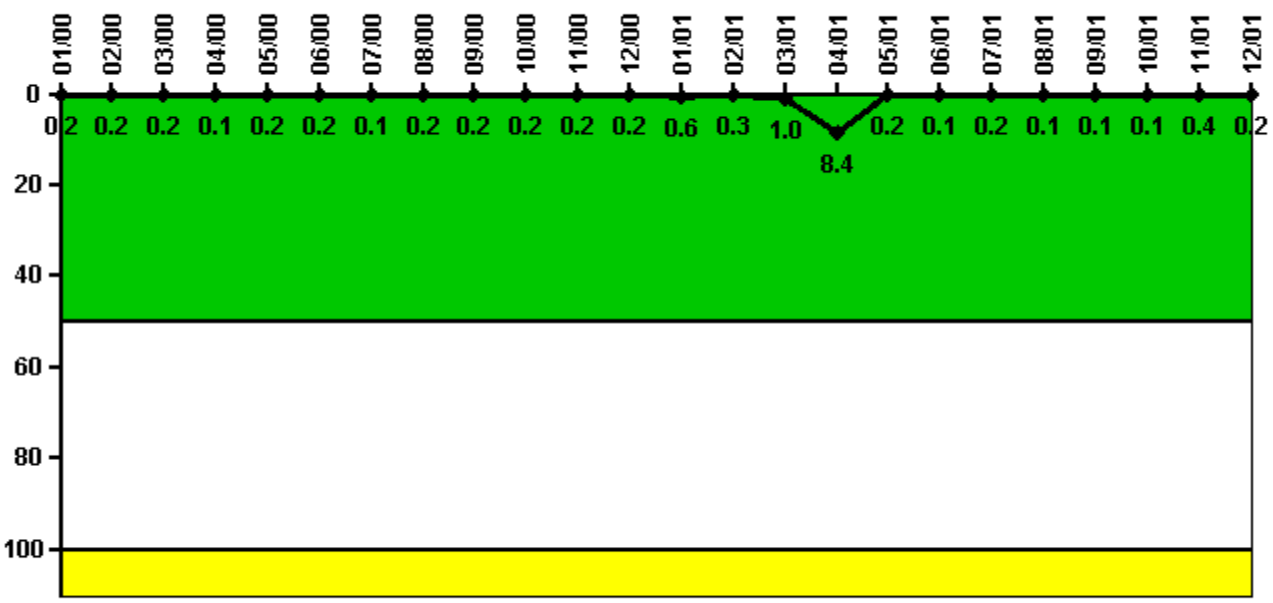
Safety System Functional Failures (PWR)	1Q/00	2Q/00	3Q/00	4Q/00	1Q/01	2Q/01	3Q/01	4Q/01
Safety System Functional Failures	0	0	0	0	1	0	0	0
Indicator value	1	0	0	0	1	1	1	1

Licensee Comments:

3Q/01: Correction - Two separate occurrences of a single train (of a multiple train system) failure were incorrectly reported as SSFFs. There were no SSFFs in Q3 2001

2Q/01: Correction - A single train (of a multiple train system) failure was incorrectly reported as a SSFF. There were no SSFFs Q2 2001.

Reactor Coolant System Activity



Thresholds: White > 50.0 Yellow > 100.0

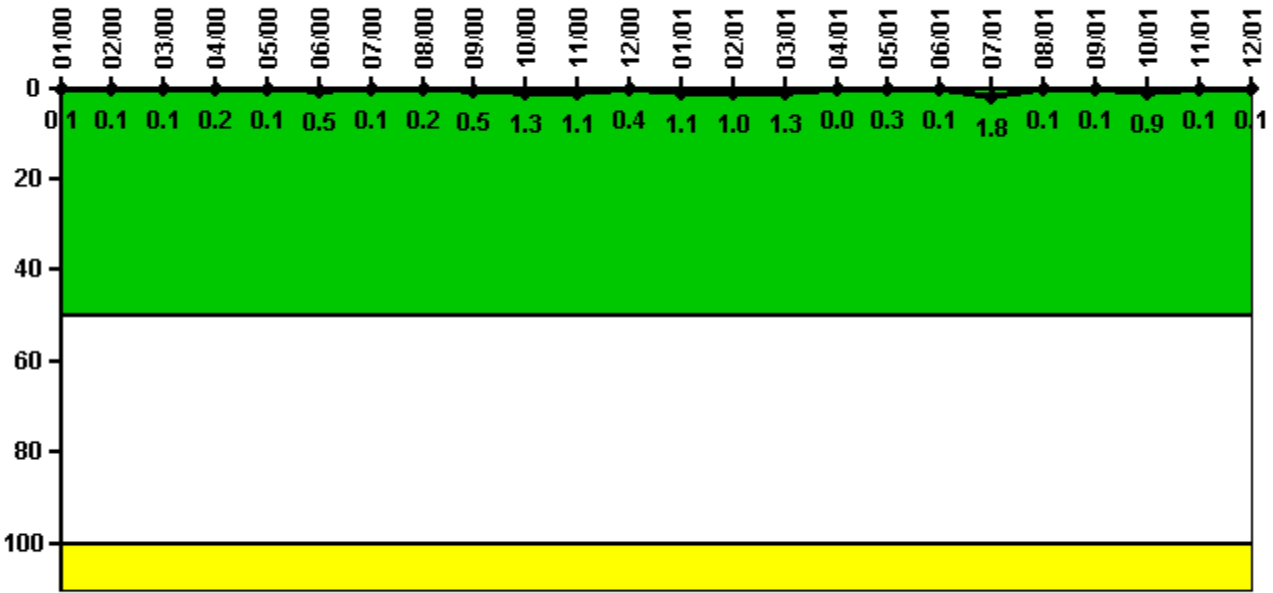
Notes

Reactor Coolant System Activity	1/00	2/00	3/00	4/00	5/00	6/00	7/00	8/00	9/00	10/00	11/00	12/00
Maximum activity	0.001880	0.002270	0.001670	0.001400	0.001500	0.001530	0.001450	0.002110	0.001560	0.001790	0.001800	0.001760
Technical specification limit	1.0	1.0	1.0	1.0	1.0	1.0	1.0	1.0	1.0	1.0	1.0	1.0
Indicator value	0.2	0.2	0.2	0.1	0.2	0.2	0.1	0.2	0.2	0.2	0.2	0.2

Reactor Coolant System Activity	1/01	2/01	3/01	4/01	5/01	6/01	7/01	8/01	9/01	10/01	11/01	12/01
Maximum activity	0.005530	0.003090	0.010100	0.083700	0.001870	0.001260	0.002060	0.001240	0.001260	0.001320	0.004170	0.001660
Technical specification limit	1.0	1.0	1.0	1.0	1.0	1.0	1.0	1.0	1.0	1.0	1.0	1.0
Indicator value	0.6	0.3	1.0	8.4	0.2	0.1	0.2	0.1	0.1	0.1	0.4	0.2

Licensee Comments: none

Reactor Coolant System Leakage



Thresholds: White > 50.0 Yellow > 100.0

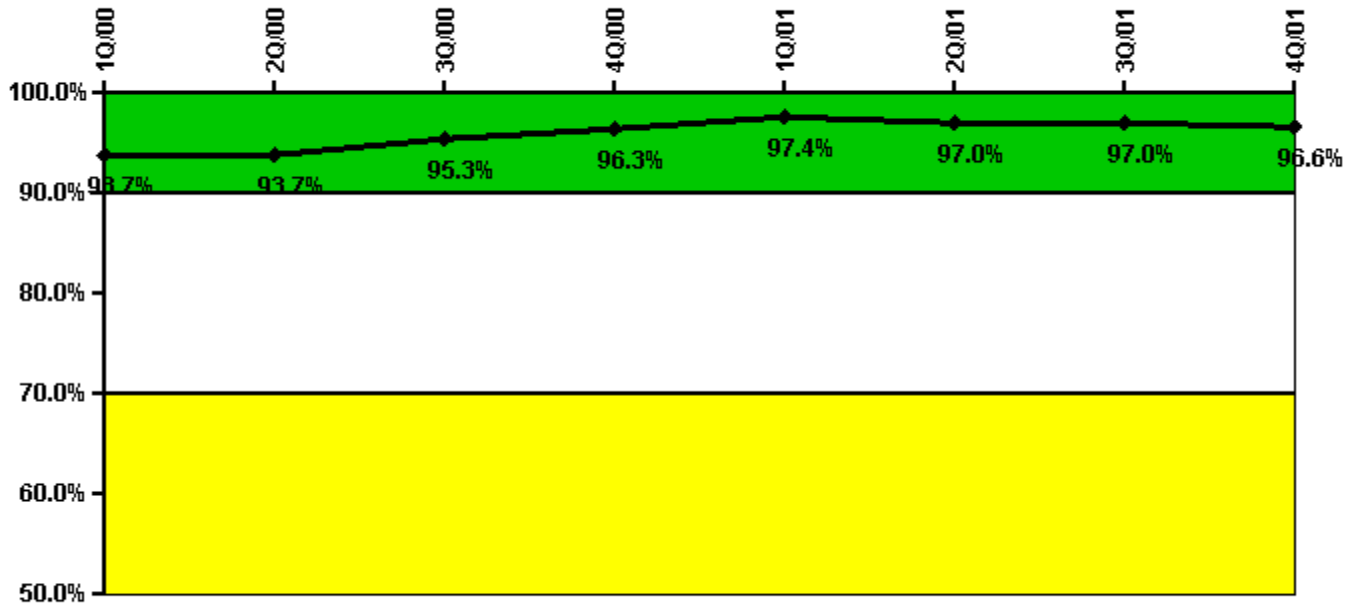
Notes

Reactor Coolant System Leakage	1/00	2/00	3/00	4/00	5/00	6/00	7/00	8/00	9/00	10/00	11/00	12/00
Maximum leakage	0.010	0.010	0.010	0.020	0.010	0.050	0.010	0.020	0.050	0.130	0.110	0.040
Technical specification limit	10.0	10.0	10.0	10.0	10.0	10.0	10.0	10.0	10.0	10.0	10.0	10.0
Indicator value	0.1	0.1	0.1	0.2	0.1	0.5	0.1	0.2	0.5	1.3	1.1	0.4

Reactor Coolant System Leakage	1/01	2/01	3/01	4/01	5/01	6/01	7/01	8/01	9/01	10/01	11/01	12/01
Maximum leakage	0.110	0.100	0.130	0	0.030	0.010	0.180	0.010	0.010	0.090	0.010	0.010
Technical specification limit	10.0	10.0	10.0	10.0	10.0	10.0	10.0	10.0	10.0	10.0	10.0	10.0
Indicator value	1.1	1.0	1.3	0	0.3	0.1	1.8	0.1	0.1	0.9	0.1	0.1

Licensee Comments: none

Drill/Exercise Performance



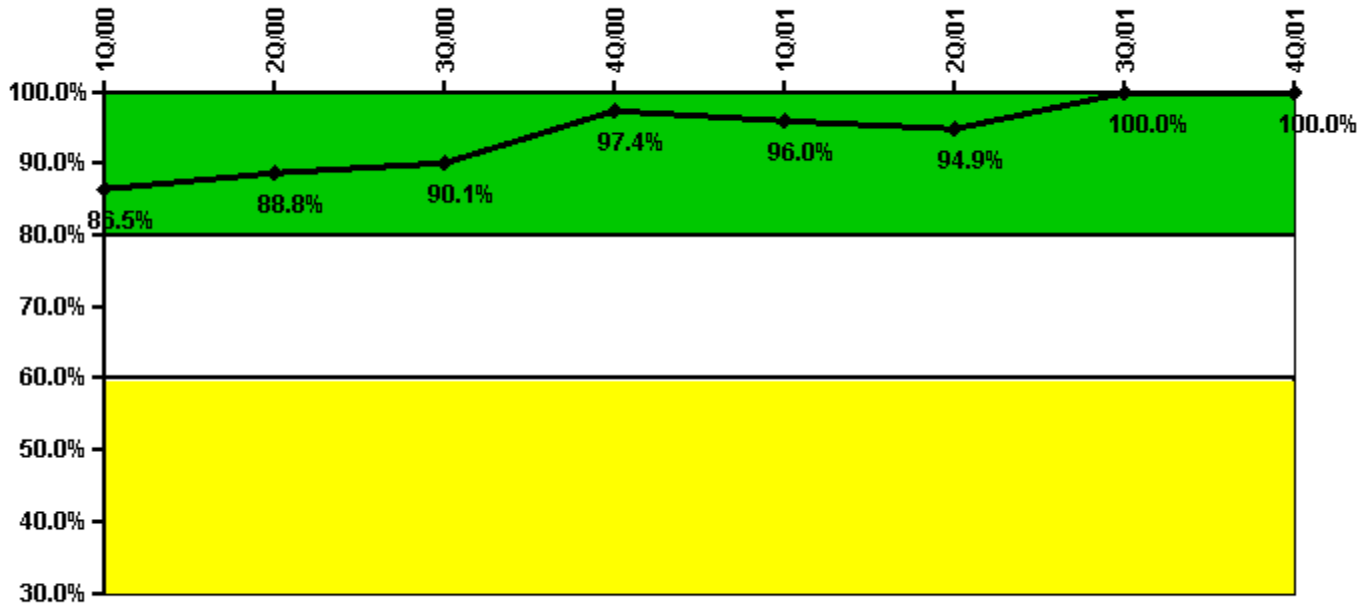
Thresholds: White < 90.0% Yellow < 70.0%

Notes

Drill/Exercise Performance	1Q/00	2Q/00	3Q/00	4Q/00	1Q/01	2Q/01	3Q/01	4Q/01
Successful opportunities	26.0	8.0	65.0	127.0	8.0	37.0	82.0	11.0
Total opportunities	27.0	9.0	65.0	130.0	8.0	41.0	85.0	12.0
Indicator value	93.7%	93.7%	95.3%	96.3%	97.4%	97.0%	97.0%	96.6%

Licensee Comments: none

ERO Drill Participation



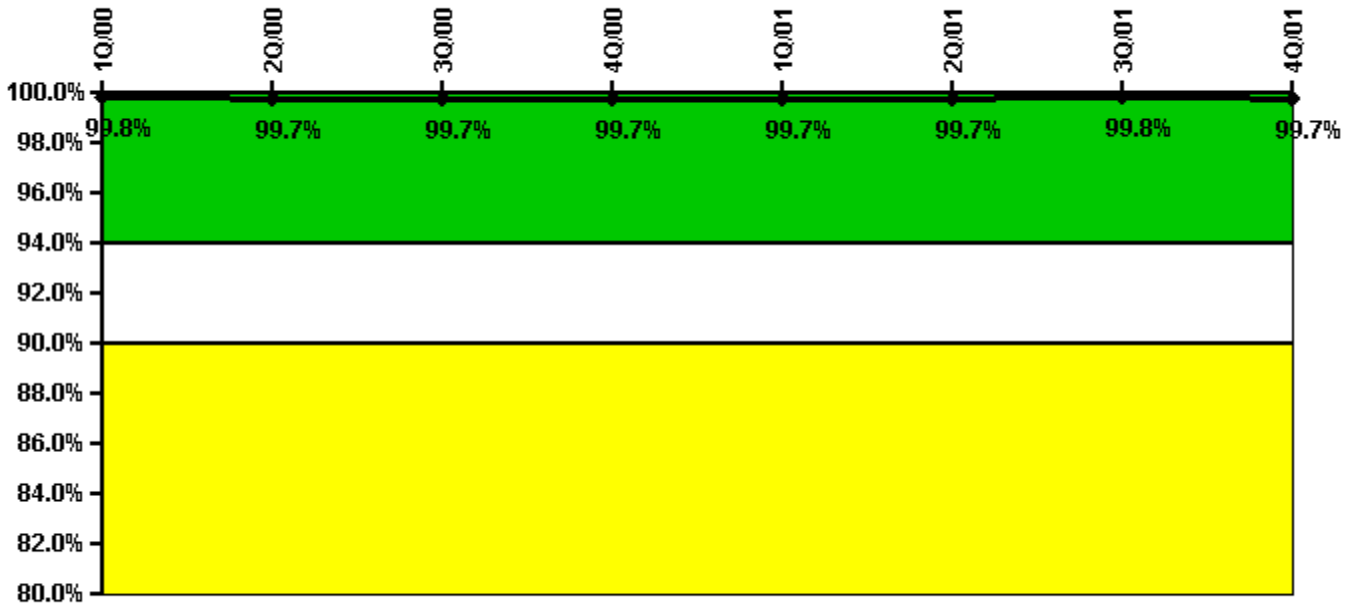
Thresholds: White < 80.0% Yellow < 60.0%

Notes

ERO Drill Participation	1Q/00	2Q/00	3Q/00	4Q/00	1Q/01	2Q/01	3Q/01	4Q/01
Participating Key personnel	77.0	71.0	73.0	75.0	72.0	75.0	79.0	72.0
Total Key personnel	89.0	80.0	81.0	77.0	75.0	79.0	79.0	72.0
Indicator value	86.5%	88.8%	90.1%	97.4%	96.0%	94.9%	100.0%	100.0%

Licensee Comments: none

Alert & Notification System



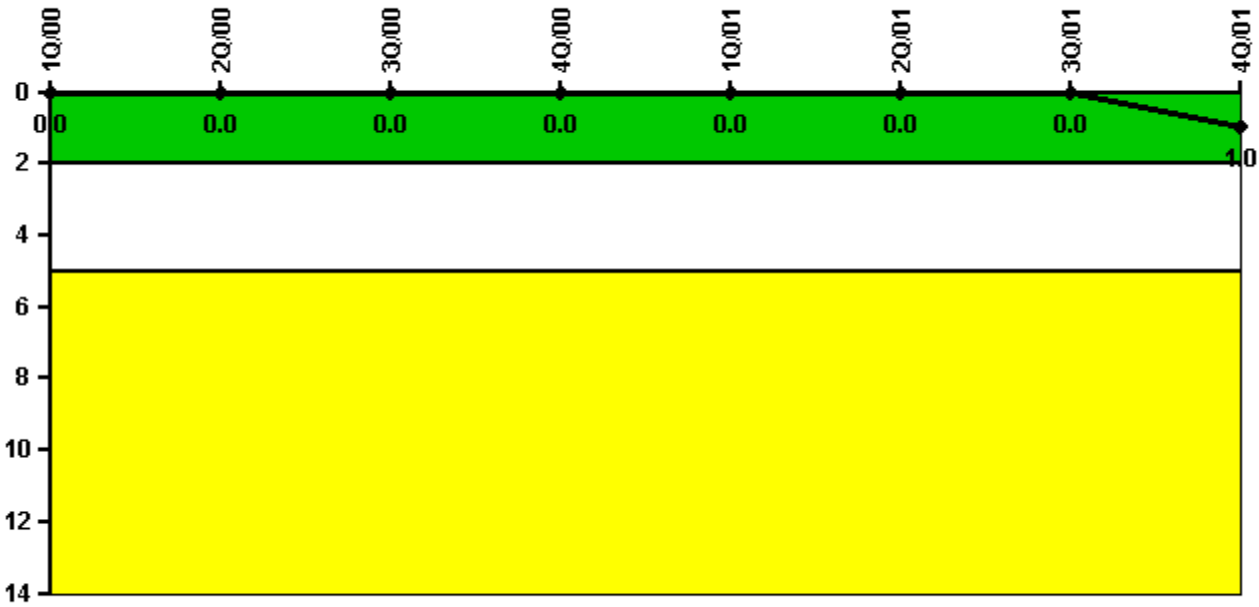
Thresholds: White < 94.0% Yellow < 90.0%

Notes

Alert & Notification System	1Q/00	2Q/00	3Q/00	4Q/00	1Q/01	2Q/01	3Q/01	4Q/01
Successful siren-tests	606	519	694	522	607	521	703	439
Total sirens-tests	609	522	696	522	609	523	704	440
Indicator value	99.8%	99.7%	99.7%	99.7%	99.7%	99.7%	99.8%	99.7%

Licensee Comments: none

Occupational Exposure Control Effectiveness



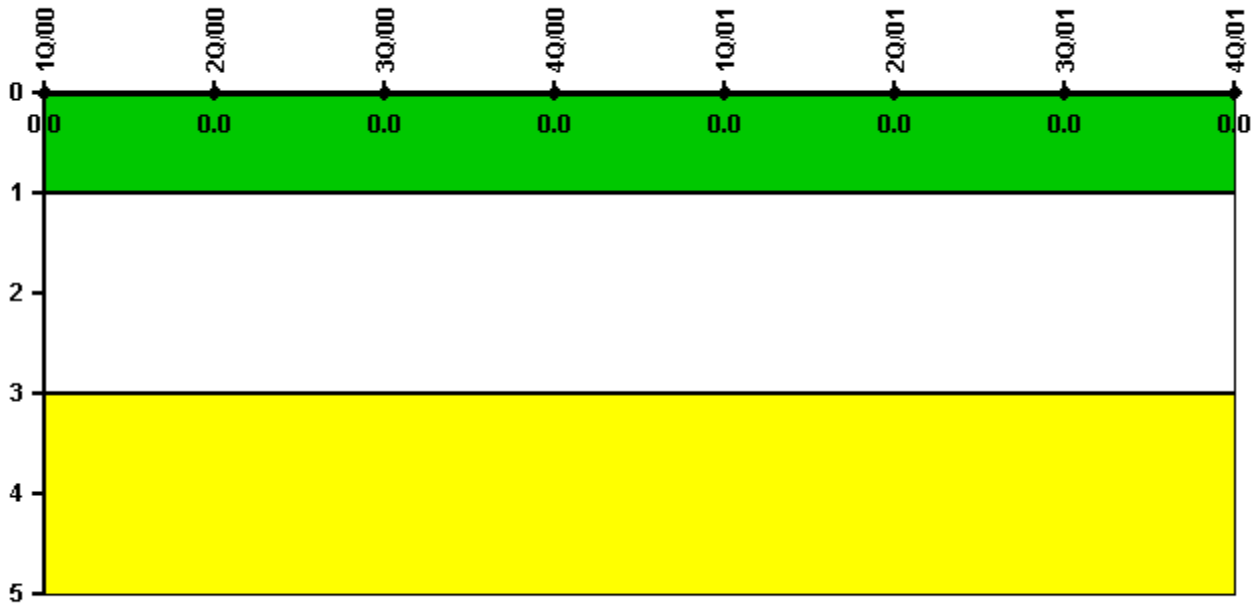
Thresholds: White > 2.0 Yellow > 5.0

Notes

Occupational Exposure Control Effectiveness	1Q/00	2Q/00	3Q/00	4Q/00	1Q/01	2Q/01	3Q/01	4Q/01
High radiation area occurrences	0	0	0	0	0	0	0	1
Very high radiation area occurrences	0	0	0	0	0	0	0	0
Unintended exposure occurrences	0	0	0	0	0	0	0	0
Indicator value	0	0	0	0	0	0	0	1

Licensee Comments: none

RETS/ODCM Radiological Effluent



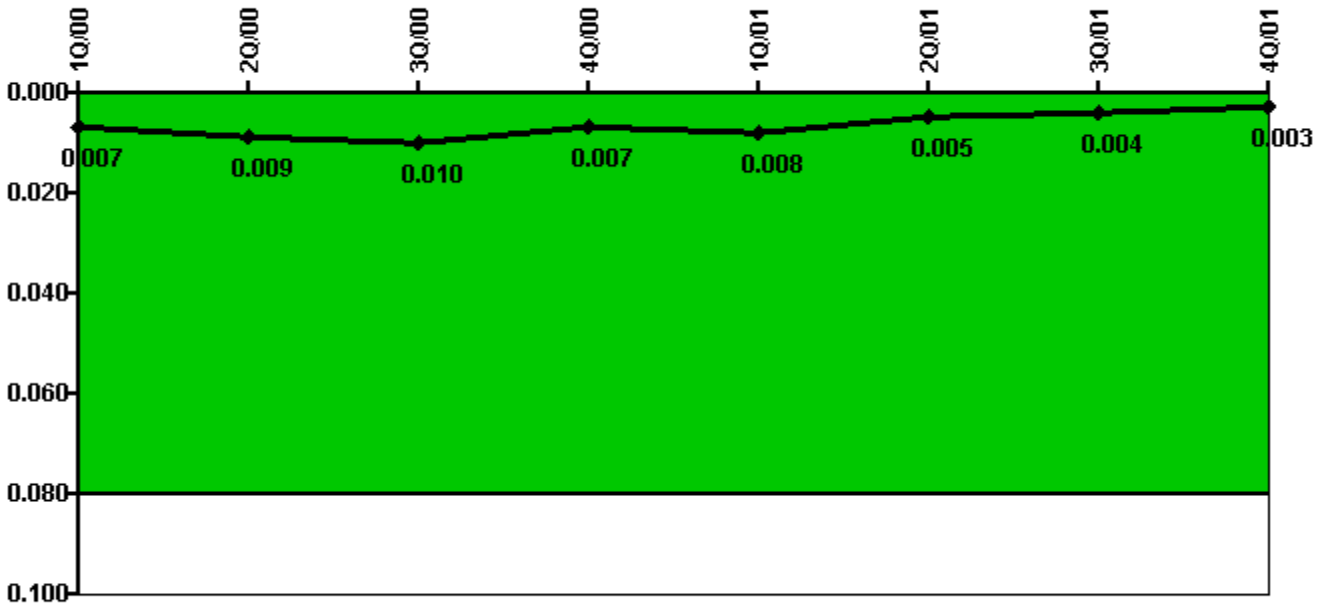
Thresholds: White > 1.0 Yellow > 3.0

Notes

RETS/ODCM Radiological Effluent	1Q/00	2Q/00	3Q/00	4Q/00	1Q/01	2Q/01	3Q/01	4Q/01
RETS/ODCM occurrences	0	0	0	0	0	0	0	0
Indicator value	0	0	0	0	0	0	0	0

Licensee Comments: none

Protected Area Security Performance Index



Thresholds: White > 0.080

Notes

Protected Area Security Performance Index	1Q/00	2Q/00	3Q/00	4Q/00	1Q/01	2Q/01	3Q/01	4Q/01
IDS compensatory hours	0	99.00	106.00	25.60	12.75	0	81.20	2.70
CCTV compensatory hours	0	1.5	0	0	0	0	0	0
IDS normalization factor	1.80	1.80	1.80	1.80	1.80	1.80	1.80	1.80
CCTV normalization factor	1.5	1.5	1.5	1.5	1.5	1.5	1.5	1.5
Index Value	0.007	0.009	0.010	0.007	0.008	0.005	0.004	0.003

Licensee Comments: none

Personnel Screening Program



Thresholds: White > 2.0 Yellow > 5.0

Notes

Personnel Screening Program	1Q/00	2Q/00	3Q/00	4Q/00	1Q/01	2Q/01	3Q/01	4Q/01
Program failures	0	0	0	0	0	0	0	0
Indicator value	0	0	0	0	0	0	0	0

Licensee Comments: none

FFD/Personnel Reliability



Thresholds: White > 2.0 Yellow > 5.0

Notes

FFD/Personnel Reliability	1Q/00	2Q/00	3Q/00	4Q/00	1Q/01	2Q/01	3Q/01	4Q/01
Program Failures	0	0	0	0	0	0	0	0
Indicator value	0	0	0	0	0	0	0	0

Licensee Comments: none

▲ [PI Summary](#) | [Inspection Findings Summary](#) | [Action Matrix Summary](#) | [Reactor Oversight Process](#)

Last Modified: March 15, 2002