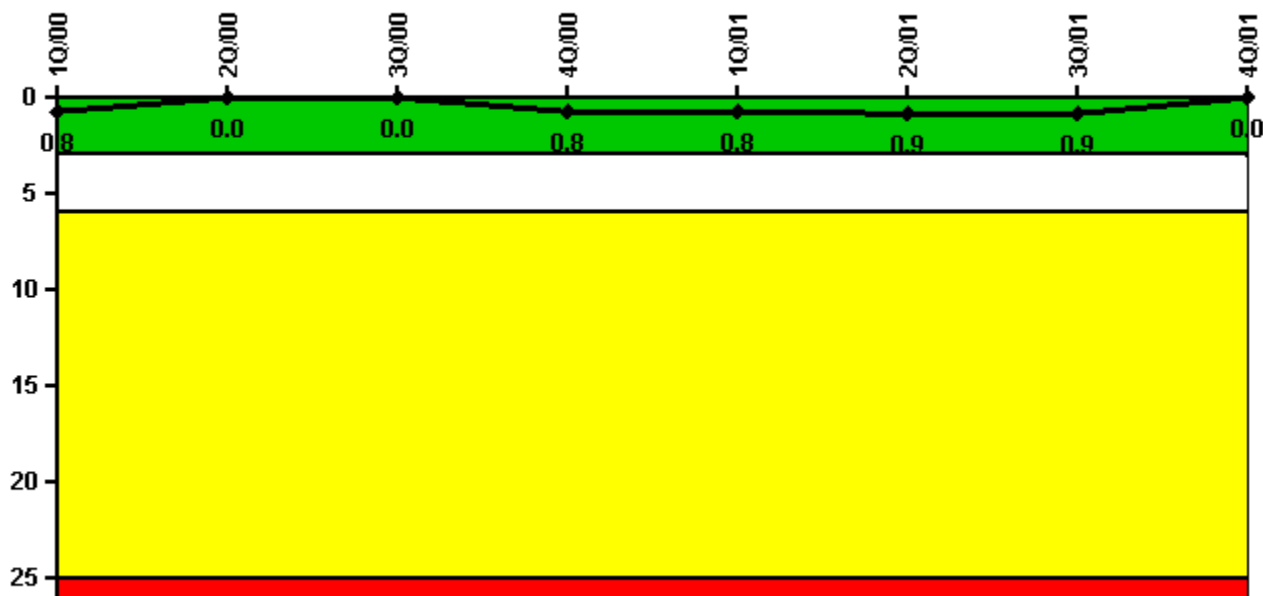


Quad Cities 1

4Q/2001 Performance Indicators

Licensee's General Comments: none

Unplanned Scrams per 7000 Critical Hrs



Thresholds: White > 3.0 Yellow > 6.0 Red > 25.0

Notes

Unplanned Scrams per 7000 Critical Hrs	1Q/00	2Q/00	3Q/00	4Q/00	1Q/01	2Q/01	3Q/01	4Q/01
Unplanned scrams	0	0	0	1.0	0	0	0	0
Critical hours	2184.0	2183.0	2208.0	1712.3	2160.0	2126.3	2208.0	2209.0
Indicator value	0.8	0	0	0.8	0.8	0.9	0.9	0

Licensee Comments: none

Scrams with Loss of Normal Heat Removal



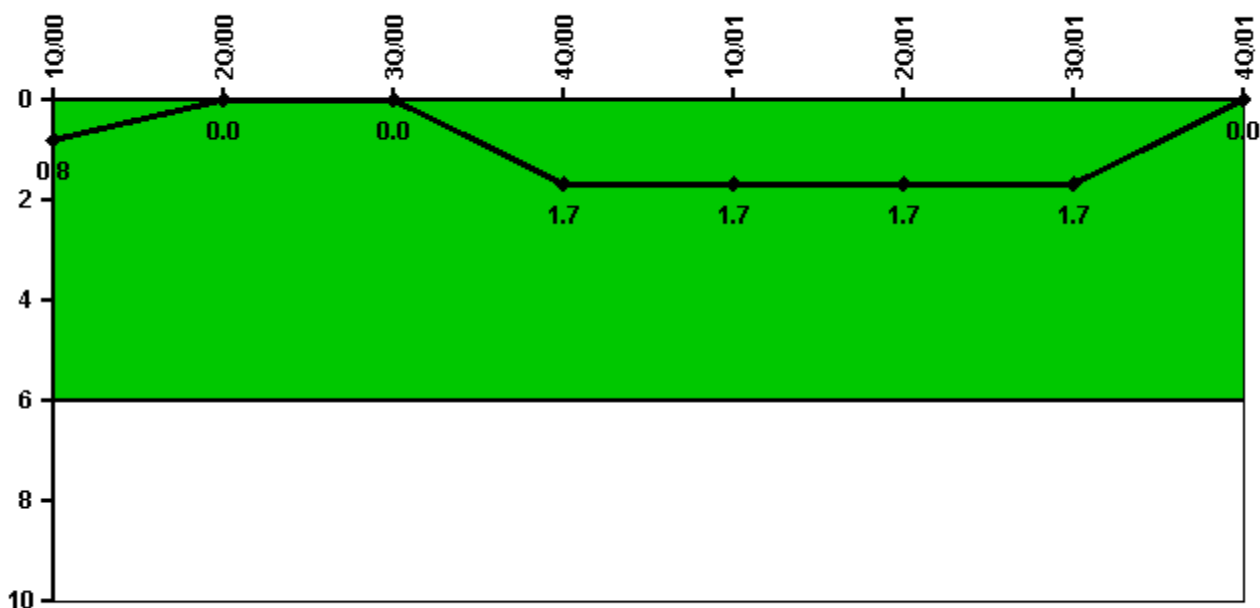
Thresholds: White > 2.0 Yellow > 10.0 Red > 20.0

Notes

Scrams with Loss of Normal Heat Removal	1Q/00	2Q/00	3Q/00	4Q/00	1Q/01	2Q/01	3Q/01	4Q/01
Scrams	0	0	0	0	0	0	0	0
Indicator value	0	0	0	0	0	0	0	0

Licensee Comments: none

Unplanned Power Changes per 7000 Critical Hrs



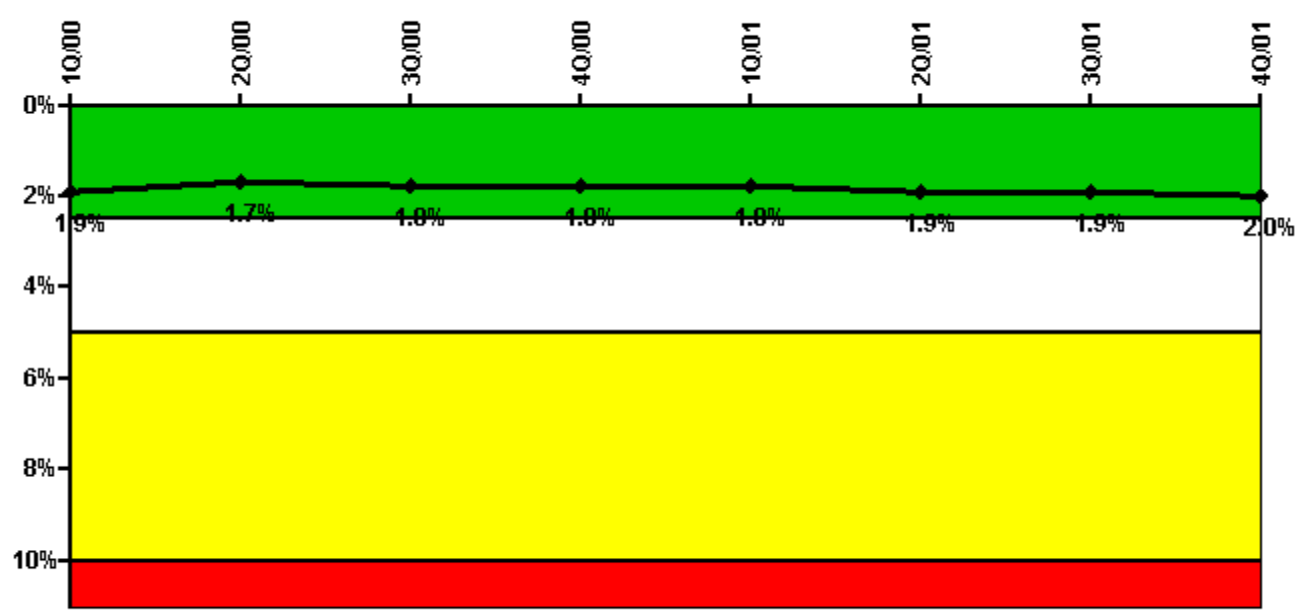
Thresholds: White > 6.0

Notes

Unplanned Power Changes per 7000 Critical Hrs	1Q/00	2Q/00	3Q/00	4Q/00	1Q/01	2Q/01	3Q/01	4Q/01
Unplanned power changes	0	0	0	2.0	0	0	0	0
Critical hours	2184.0	2183.0	2208.0	1712.3	2160.0	2126.3	2208.0	2209.0
Indicator value	0.8	0	0	1.7	1.7	1.7	1.7	0

Licensee Comments: none

Safety System Unavailability, Emergency AC Power



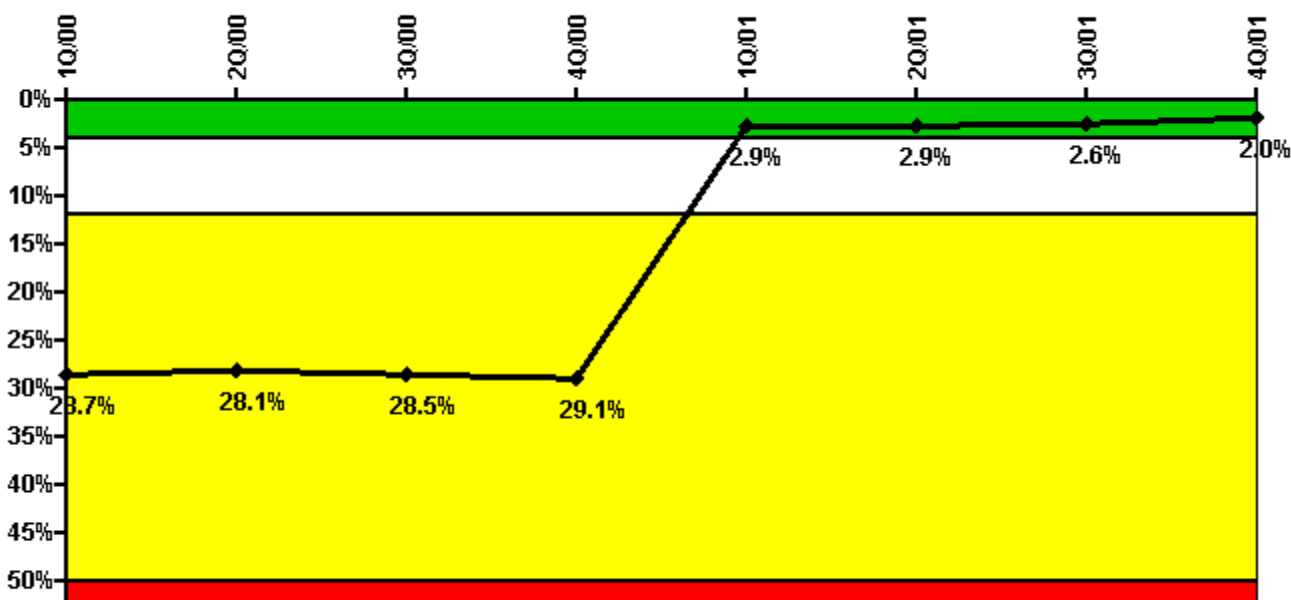
Thresholds: White > 2.5% Yellow > 5.0% Red > 10.0%

Notes

Safety System Unavailability, Emergency AC Power	1Q/00	2Q/00	3Q/00	4Q/00	1Q/01	2Q/01	3Q/01	4Q/01
Train 1								
Planned unavailable hours	48.10	17.29	8.46	46.68	35.25	15.30	20.60	53.68
Unplanned unavailable hours	4.17	0	0	0	0	0	0	0
Fault exposure hours	0	0	0	0	0	0	0	0
Effective Reset hours	0	0	0	0	0	0	0	0
Required hours	2184.00	2183.00	2208.00	2209.00	2160.00	2183.00	2208.00	2209.00
Train 2								
Planned unavailable hours	12.46	11.32	69.70	63.03	37.35	54.20	23.77	20.97
Unplanned unavailable hours	0	0	3.30	0	2.62	0	1.63	0
Fault exposure hours	0	0	0	0	0	0	0	0
Effective Reset hours	0	0	0	0	0	0	0	0
Required hours	2184.00	2183.00	2208.00	2209.00	2160.00	2183.00	2208.00	2209.00
Indicator value	1.9%	1.7%	1.8%	1.8%	1.8%	1.9%	1.9%	2.0%

Licensee Comments: none

Safety System Unavailability, High Pressure Injection System (HPCI)



Thresholds: White > 4.0% Yellow > 12.0% Red > 50.0%

Notes

Safety System Unavailability, High Pressure Injection System (HPCI)	1Q/00	2Q/00	3Q/00	4Q/00	1Q/01	2Q/01	3Q/01	4Q/01
Train 1								
Planned unavailable hours	45.21	31.29	102.84	65.64	10.45	45.17	5.50	4.91
Unplanned unavailable hours	33.85	3.20	0	5.20	0	0	0	0
Fault exposure hours	1889.40	0	0	0	0	0	0	0
Effective Reset hours	0	0	0	0	5439.80	0	0	0
Required hours	2184.00	2183.00	2208.00	1712.30	2160.00	2126.30	2208.00	2209.00
Indicator value	28.7%	28.1%	28.5%	29.1%	2.9%	2.9%	2.6%	2.0%

Licensee Comments:

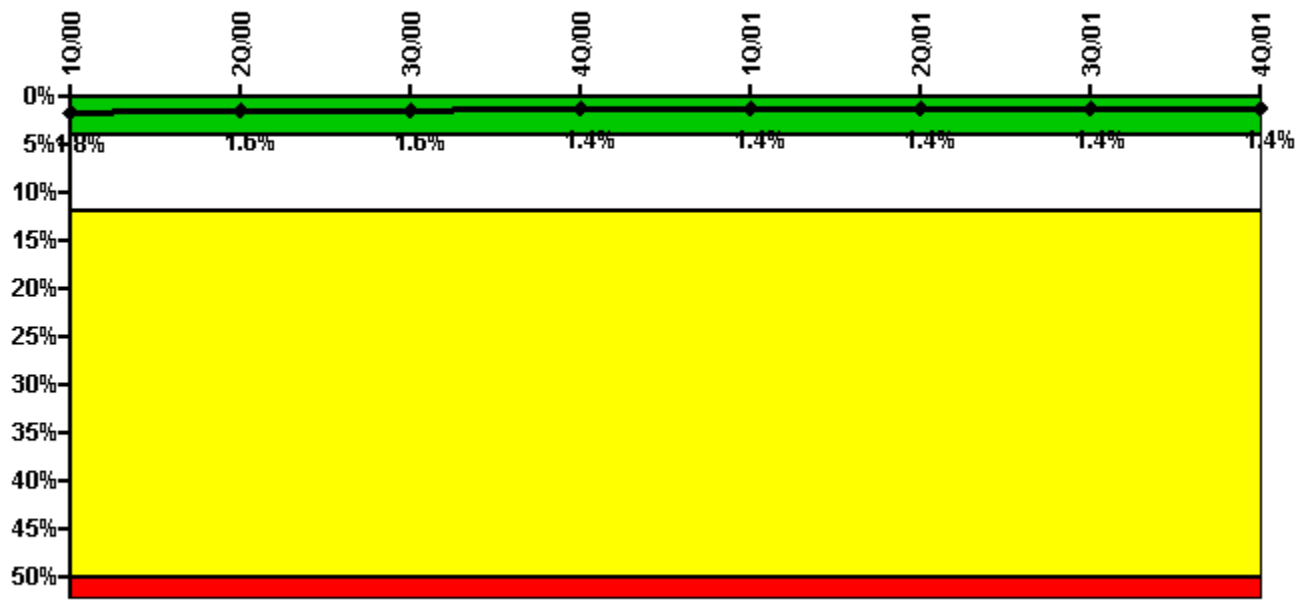
4Q/01: In accordance with RIS 2001-23, fault exposure hours associated with a March 21, 2000, failure of the HPCI auxiliary oil pump have been resubmitted and reset.

1Q/00: Fault exposure hours are being added to this performance indicator due to the failure to start of the Unit 1 HPCI aux oil pump on March 21, 2000. Fault exposure hours in the amount of one half of the hours since the last successful performance of the cycle surveillance are included. Evaluation of this issue is continuing. An FAQ will be submitted to request clarification of some issues regarding this performance indicator. NOTE: The aforementioned fault exposure hours were removed in accordance with NEI 99-02, revision 0, in a change submittal made in April, 2001.

4Q/99: The submittal for this reporting period updates system unavailable hours. As a result of ongoing reviews, it was identified that there are additional unavailability hours associated with the performance of surveillance testing on support systems. This review covered all of 1999. The results of this review indicate that historical data for 1997 and 1998 is representative of system performance. Unit 1 High Pressure Coolant Injection System changes total 11.3 hours for the months of January 1999 through September 1999. Changes to unavailable hours are less than 0.2% and do not impact the color. * Fault exposure hours are being added to this performance indicator due to the failure to start of the Unit 1 HPCI aux oil pump on March 21, 2000. Fault exposure hours in the amount of one half of the hours since the last successful performance of the cycle surveillance are included. Evaluation of this issue is continuing. An FAQ will be submitted to request clarification of some issues regarding this performance indicator. NOTE: The aforementioned fault exposure hours were removed in accordance with NEI 99-02, revision 0, in a change submittal made in April, 2001.

3Q/99: Fault exposure hours are being added to this performance indicator due to the failure to start of the Unit 1 HPCI aux oil pump on March 21, 2000. Fault exposure hours in the amount of one half of the hours since the last successful performance of the cycle surveillance are included. Evaluation of this issue is continuing. An FAQ will be submitted to request clarification of some issues regarding this performance indicator. NOTE: The aforementioned fault exposure hours were removed in accordance with NEI 99-02, revision 0, in a change submittal made in April, 2001.

Safety System Unavailability, Heat Removal System (RCIC)



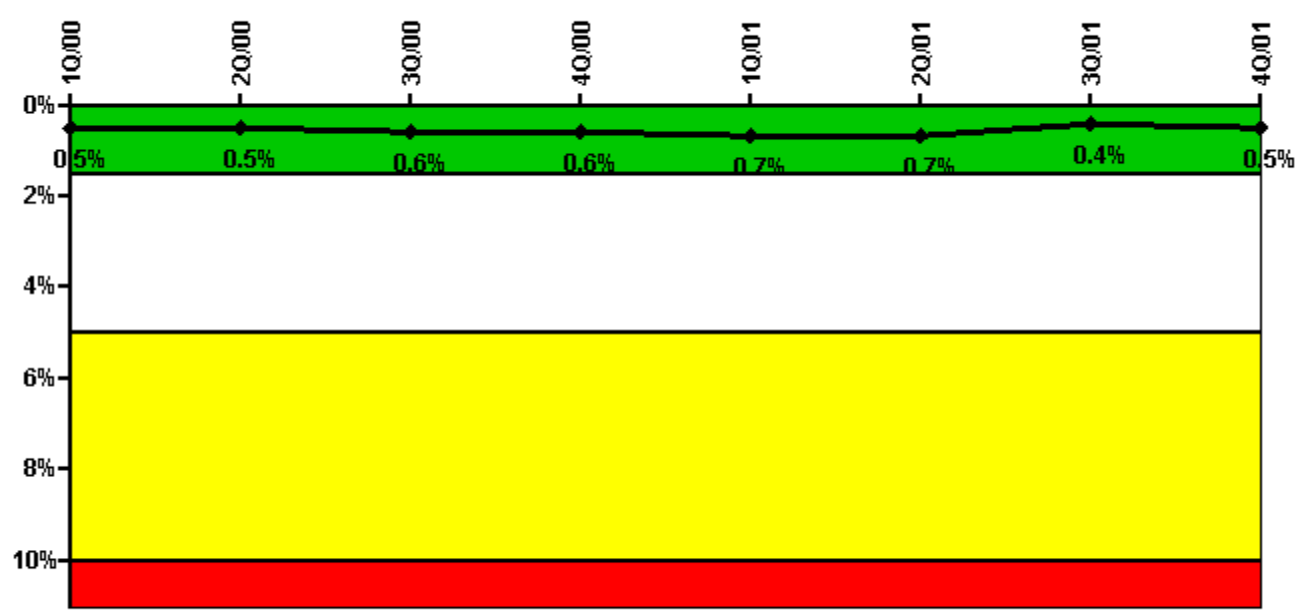
Thresholds: White > 4.0% Yellow > 12.0% Red > 50.0%

Notes

Safety System Unavailability, Heat Removal System (RCIC)	1Q/00	2Q/00	3Q/00	4Q/00	1Q/01	2Q/01	3Q/01	4Q/01
Train 1								
Planned unavailable hours	20.36	55.86	9.61	6.91	43.32	22.88	8.44	5.59
Unplanned unavailable hours	26.21	0	0	0	0	0	0	9.20
Fault exposure hours	0	0	0	0	0	0	0	12.00
Effective Reset hours	0	0	0	0	0	0	0	0
Required hours	2184.00	2183.00	2208.00	1712.30	2160.00	2126.30	2208.00	2209.00
Indicator value	1.8%	1.6%	1.6%	1.4%	1.4%	1.4%	1.4%	1.4%

Licensee Comments: none

Safety System Unavailability, Residual Heat Removal System



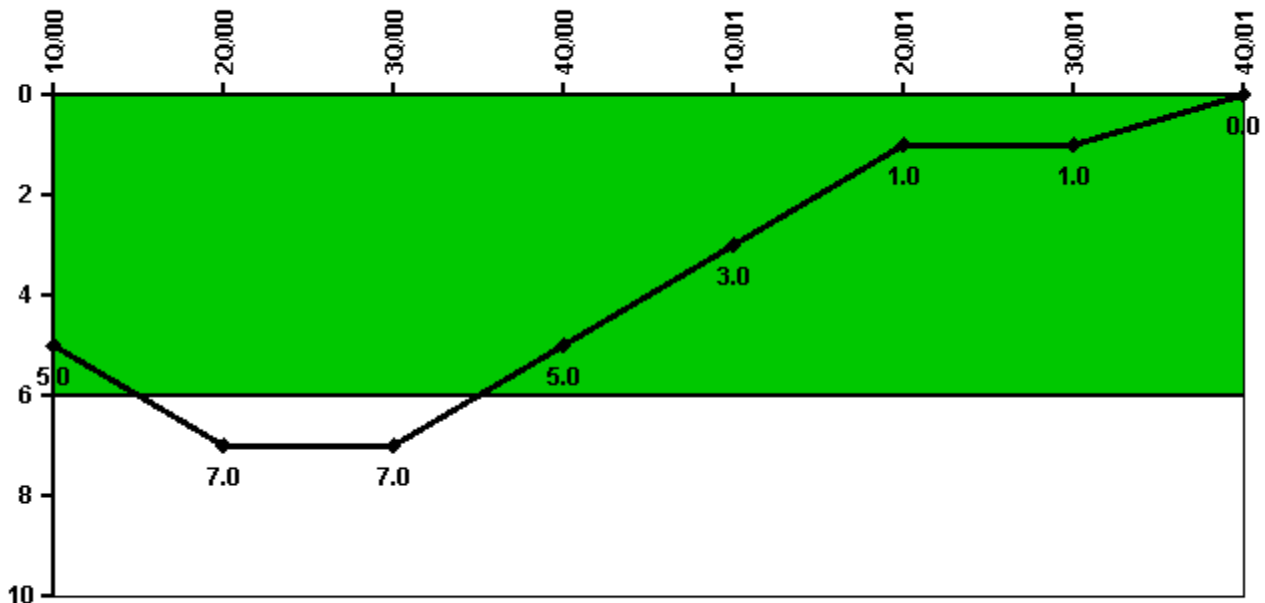
Thresholds: White > 1.5% Yellow > 5.0% Red > 10.0%

Notes

Safety System Unavailability, Residual Heat Removal System	1Q/00	2Q/00	3Q/00	4Q/00	1Q/01	2Q/01	3Q/01	4Q/01
Train 1								
Planned unavailable hours	0	0	27.37	7.10	47.75	0	0	34.57
Unplanned unavailable hours	0	0	0	0	0	0	0	0
Fault exposure hours	0	0	0	0	0	0	0	0
Effective Reset hours	0	0	0	0	0	0	0	0
Required hours	2184.00	2183.00	2208.00	2209.00	2160.00	2183.00	2208.00	2209.00
Train 2								
Planned unavailable hours	0	0	0	2.15	27.92	0	0	25.10
Unplanned unavailable hours	0	0	0	0	0	0	0	0
Fault exposure hours	0	0	0	0	0	0	0	0
Effective Reset hours	0	0	0	0	0	0	0	0
Required hours	2184.00	2183.00	2208.00	2209.00	2160.00	2183.00	2208.00	2209.00
Indicator value	0.5%	0.5%	0.6%	0.6%	0.7%	0.7%	0.4%	0.5%

Licensee Comments: none

Safety System Functional Failures (BWR)



Thresholds: White > 6.0

Notes

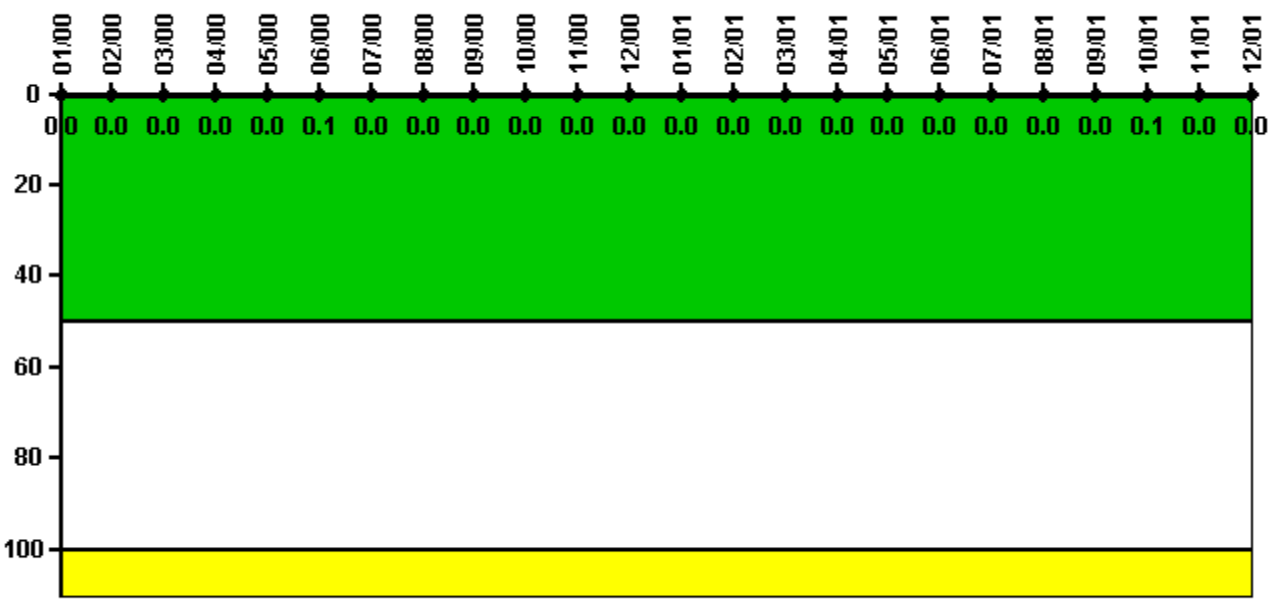
Safety System Functional Failures (BWR)	1Q/00	2Q/00	3Q/00	4Q/00	1Q/01	2Q/01	3Q/01	4Q/01
Safety System Functional Failures	2	2	0	1	0	0	0	0
Indicator value	5	7	7	5	3	1	1	0

Licensee Comments:

4Q/01: One Safety System Functional Failure concerning the Safe Shutdown Makeup Pump was withdrawn from the fourth quarter 2000 data in accordance with a December 4, 2001, letter from the NRC concerning IR 50-254(265)/01-08.

4Q/00: One Safety System Functional Failure has been added to the fourth quarter 2000 indicator in response to Inspection Report 50-265/01-08. Licensee review of the event is ongoing. {The abovementioned Safety System Functional Failure was withdrawn with the fourth quarter 2001 submittal per a subsequent NRC letter concerning Inspection Report 50-265/01-08.}

Reactor Coolant System Activity



Thresholds: White > 50.0 Yellow > 100.0

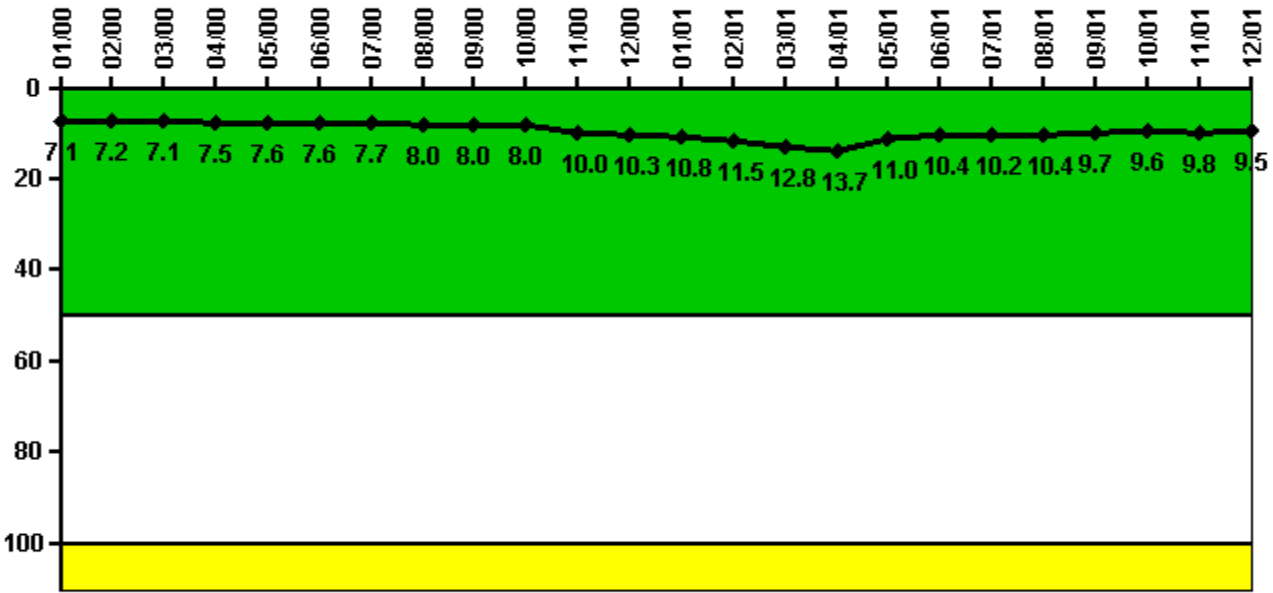
Notes

Reactor Coolant System Activity	1/00	2/00	3/00	4/00	5/00	6/00	7/00	8/00	9/00	10/00	11/00	12/00
Maximum activity	0.000096	0.000085	0.000085	0.000081	0.000078	0.000101	0.000086	0.000080	0.000074	0.000064	0.000057	0.000072
Technical specification limit	0.2	0.2	0.2	0.2	0.2	0.2	0.2	0.2	0.2	0.2	0.2	0.2
Indicator value	0	0	0	0	0	0.1	0	0	0	0	0	0

Reactor Coolant System Activity	1/01	2/01	3/01	4/01	5/01	6/01	7/01	8/01	9/01	10/01	11/01	12/01
Maximum activity	0.000043	0.000084	0.000044	0.000039	0.000063	0.000056	0.000055	0.000082	0.000067	0.000171	0.000041	0.000043
Technical specification limit	0.2	0.2	0.2	0.2	0.2	0.2	0.2	0.2	0.2	0.2	0.2	0.2
Indicator value	0	0	0	0	0	0	0	0	0	0.1	0	0

Licensee Comments: none

Reactor Coolant System Leakage



Thresholds: White > 50.0 Yellow > 100.0

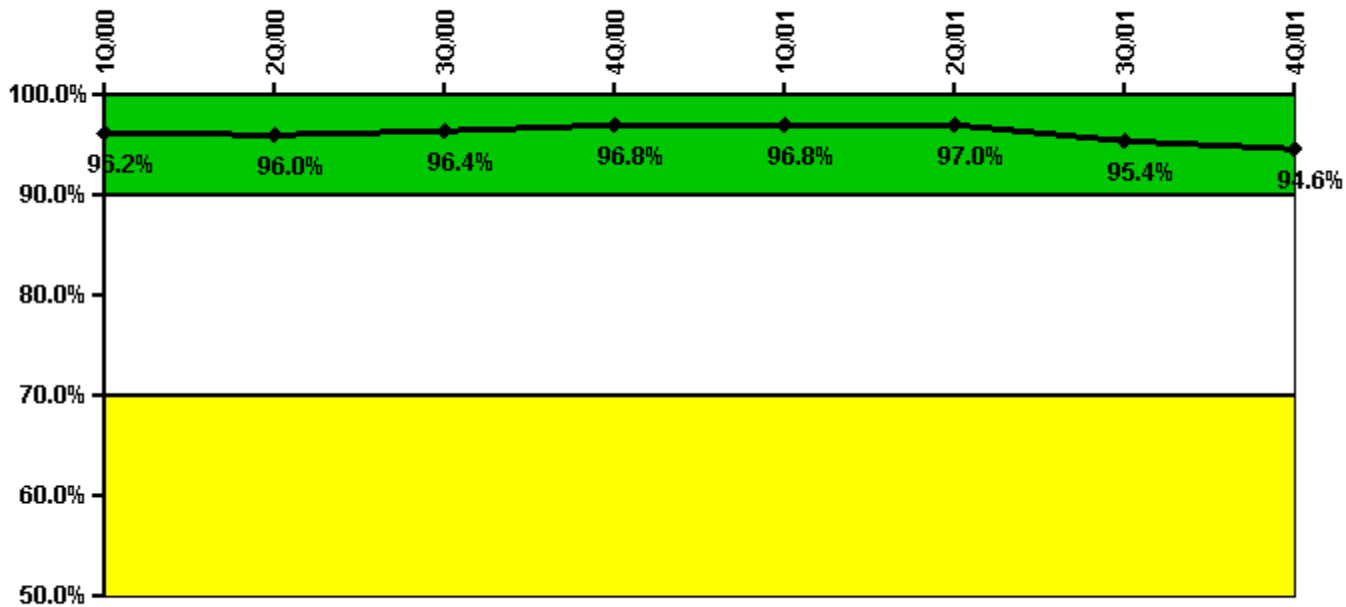
Notes

Reactor Coolant System Leakage	1/00	2/00	3/00	4/00	5/00	6/00	7/00	8/00	9/00	10/00	11/00	12/00
Maximum leakage	1.780	1.790	1.780	1.880	1.900	1.900	1.920	1.990	1.990	2.000	2.490	2.570
Technical specification limit	25.0	25.0	25.0	25.0	25.0	25.0	25.0	25.0	25.0	25.0	25.0	25.0
Indicator value	7.1	7.2	7.1	7.5	7.6	7.6	7.7	8.0	8.0	8.0	10.0	10.3

Reactor Coolant System Leakage	1/01	2/01	3/01	4/01	5/01	6/01	7/01	8/01	9/01	10/01	11/01	12/01
Maximum leakage	2.710	2.870	3.210	3.420	2.750	2.590	2.550	2.590	2.420	2.410	2.440	2.370
Technical specification limit	25.0	25.0	25.0	25.0	25.0	25.0	25.0	25.0	25.0	25.0	25.0	25.0
Indicator value	10.8	11.5	12.8	13.7	11.0	10.4	10.2	10.4	9.7	9.6	9.8	9.5

Licensee Comments: none

Drill/Exercise Performance



Thresholds: White < 90.0% Yellow < 70.0%

Notes

Drill/Exercise Performance	1Q/00	2Q/00	3Q/00	4Q/00	1Q/01	2Q/01	3Q/01	4Q/01
Successful opportunities	15.0	59.0	50.0	39.0	0	45.0	7.0	47.0
Total opportunities	17.0	62.0	53.0	39.0	0	46.0	10.0	50.0
Indicator value	96.2%	96.0%	96.4%	96.8%	96.8%	97.0%	95.4%	94.6%

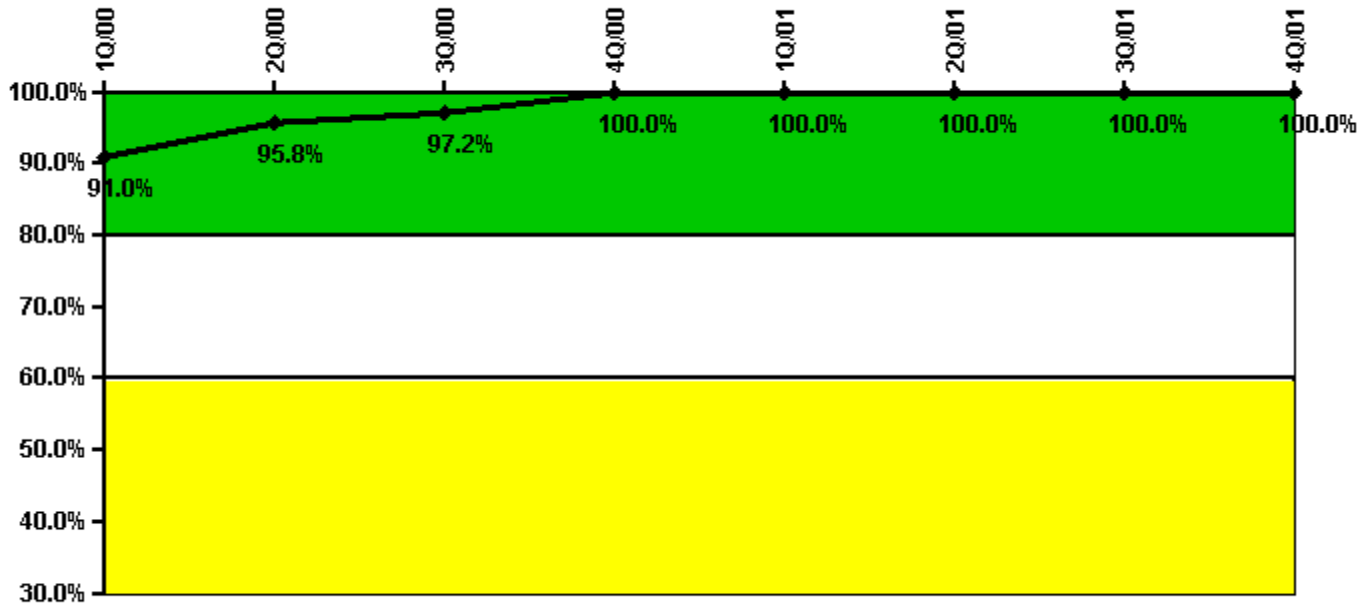
Licensee Comments:

4Q/01: During the 4th quarter 2001, an error was made in developing a PAR. The subsequent notification reflected this error. This is being reported as two failed opportunities. An FAQ is being submitted for clarification concerning whether this should be reported as two failed opportunities or one failed opportunity. Additionally, along with this quarterly submittal, the June 2001 and September 2001 data was revised to correct utility-identified errors in the PI submittals.

3Q/01: The September data was adjusted with the fourth quarter 2001 submittal to correct a utility-identified error in the PI submittal.

2Q/01: This indicator is changed to reflect the results of a June 26, 2001, evaluation that were not provided in the second quarter submittal. This does not affect the color.

ERO Drill Participation



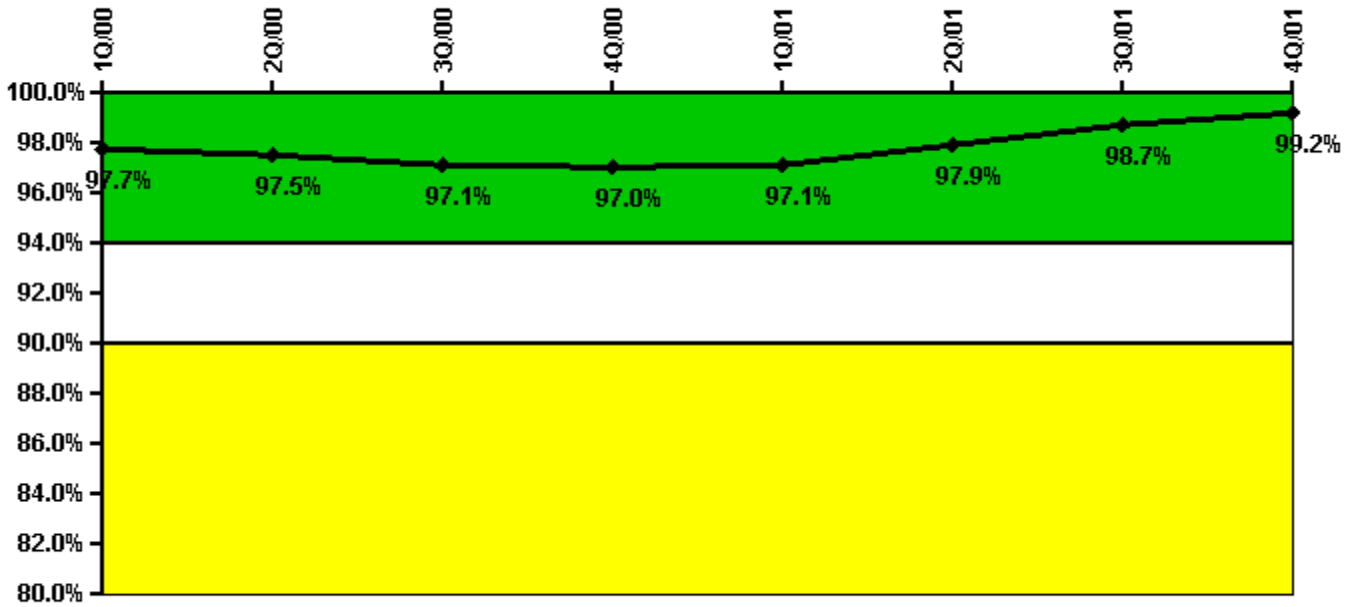
Thresholds: White < 80.0% Yellow < 60.0%

Notes

ERO Drill Participation	1Q/00	2Q/00	3Q/00	4Q/00	1Q/01	2Q/01	3Q/01	4Q/01
Participating Key personnel	61.0	69.0	69.0	70.0	65.0	66.0	67.0	56.0
Total Key personnel	67.0	72.0	71.0	70.0	65.0	66.0	67.0	56.0
Indicator value	91.0%	95.8%	97.2%	100.0%	100.0%	100.0%	100.0%	100.0%

Licensee Comments: none

Alert & Notification System



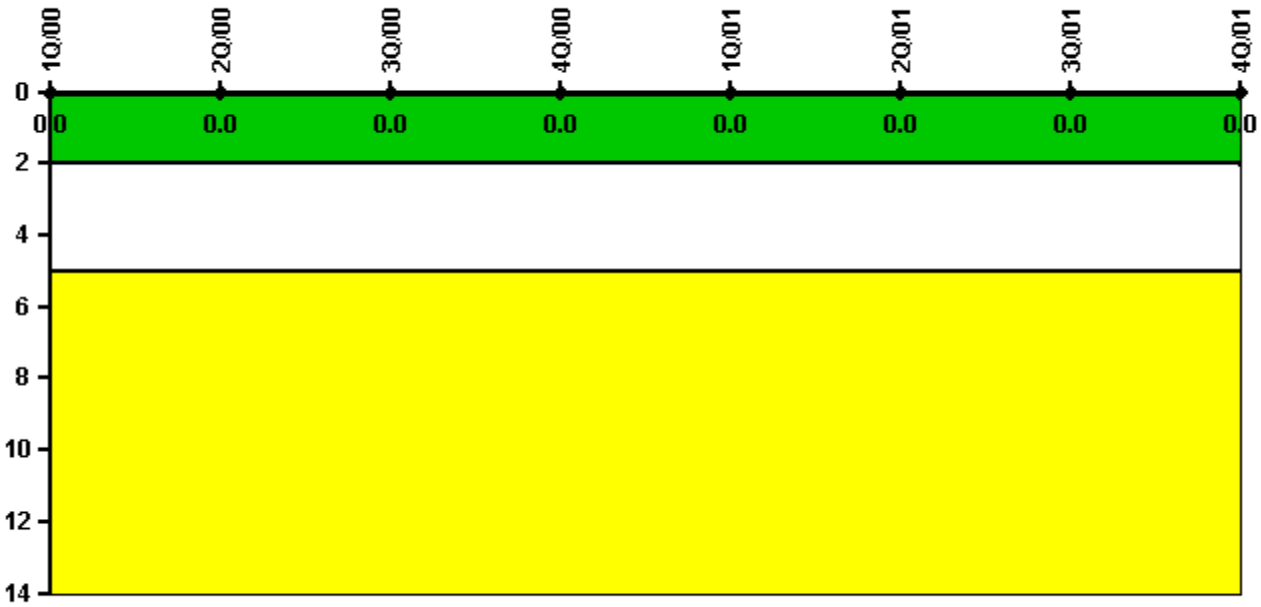
Thresholds: White < 94.0% Yellow < 90.0%

Notes

Alert & Notification System	1Q/00	2Q/00	3Q/00	4Q/00	1Q/01	2Q/01	3Q/01	4Q/01
Successful siren-tests	3321	3190	3150	3202	3285	3299	3256	3259
Total sirens-tests	3380	3328	3276	3276	3328	3328	3276	3276
Indicator value	97.7%	97.5%	97.1%	97.0%	97.1%	97.9%	98.7%	99.2%

Licensee Comments: none

Occupational Exposure Control Effectiveness



Thresholds: White > 2.0 Yellow > 5.0

Notes

Occupational Exposure Control Effectiveness	1Q/00	2Q/00	3Q/00	4Q/00	1Q/01	2Q/01	3Q/01	4Q/01
High radiation area occurrences	0	0	0	0	0	0	0	0
Very high radiation area occurrences	0	0	0	0	0	0	0	0
Unintended exposure occurrences	0	0	0	0	0	0	0	0
Indicator value	0	0	0	0	0	0	0	0

Licensee Comments: none

RETS/ODCM Radiological Effluent



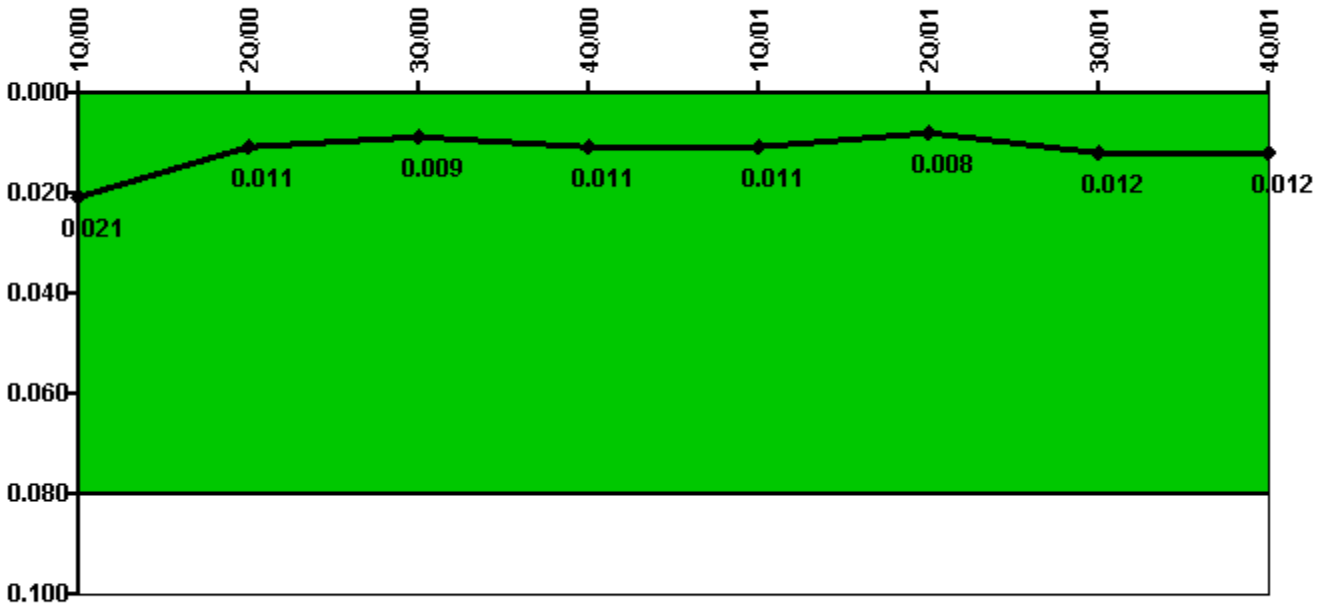
Thresholds: White > 1.0 Yellow > 3.0

Notes

RETS/ODCM Radiological Effluent	1Q/00	2Q/00	3Q/00	4Q/00	1Q/01	2Q/01	3Q/01	4Q/01
RETS/ODCM occurrences	0	0	0	0	0	0	0	0
Indicator value	0	0	0	0	0	0	0	0

Licensee Comments: none

Protected Area Security Performance Index



Thresholds: White > 0.080

Notes

Protected Area Security Performance Index	1Q/00	2Q/00	3Q/00	4Q/00	1Q/01	2Q/01	3Q/01	4Q/01
IDS compensatory hours	28.50	82.20	24.32	52.19	30.70	37.60	80.50	46.40
CCTV compensatory hours	0	4.3	1.6	0	0.1	0	13.9	1.4
IDS normalization factor	1.00	1.00	1.00	1.00	1.00	1.00	1.00	1.00
CCTV normalization factor	1.0	1.0	1.0	1.0	1.0	1.0	1.0	1.0
Index Value	0.021	0.011	0.009	0.011	0.011	0.008	0.012	0.012

Licensee Comments: none

Personnel Screening Program



Thresholds: White > 2.0 Yellow > 5.0

Notes

Personnel Screening Program	1Q/00	2Q/00	3Q/00	4Q/00	1Q/01	2Q/01	3Q/01	4Q/01
Program failures	0	0	0	0	0	0	0	0
Indicator value	0	0	0	0	0	0	0	0

Licensee Comments: none

FFD/Personnel Reliability



Thresholds: White > 2.0 Yellow > 5.0

Notes

FFD/Personnel Reliability	1Q/00	2Q/00	3Q/00	4Q/00	1Q/01	2Q/01	3Q/01	4Q/01
Program Failures	0	0	0	0	0	0	0	0
Indicator value	0	0	0	0	0	0	0	0

Licensee Comments: none

▲ [PI Summary](#) | [Inspection Findings Summary](#) | [Action Matrix Summary](#) | [Reactor Oversight Process](#)

Last Modified: March 15, 2002