

**Kewaunee**

**4Q/2001 Performance Indicators**

Licensee's General Comments: none

**Unplanned Scrams per 7000 Critical Hrs**



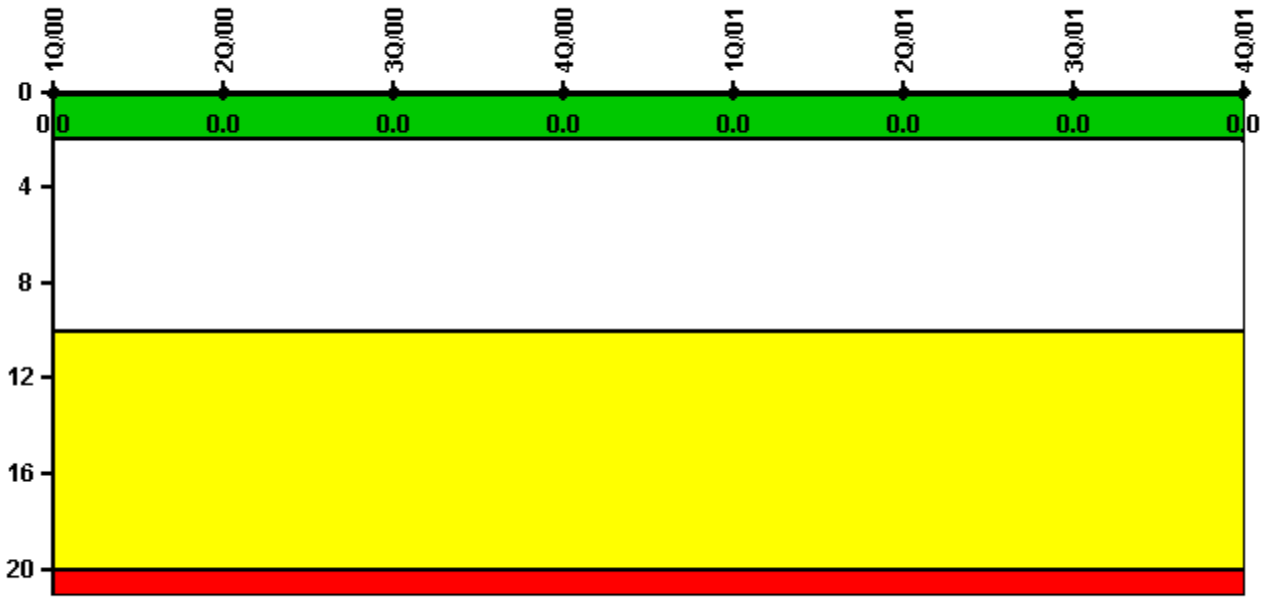
Thresholds: White > 3.0 Yellow > 6.0 Red > 25.0

**Notes**

Unplanned Scrams per 7000 Critical Hrs	1Q/00	2Q/00	3Q/00	4Q/00	1Q/01	2Q/01	3Q/01	4Q/01
Unplanned scrams	0	1.0	0	0	0	1.0	0	0
Critical hours	2184.0	1202.3	2208.0	2209.0	2160.0	2156.8	2040.2	723.8
<b>Indicator value</b>	<b>0</b>	<b>0.9</b>	<b>0.9</b>	<b>0.9</b>	<b>0.9</b>	<b>0.8</b>	<b>0.8</b>	<b>1.0</b>

Licensee Comments: none

### Scrams with Loss of Normal Heat Removal



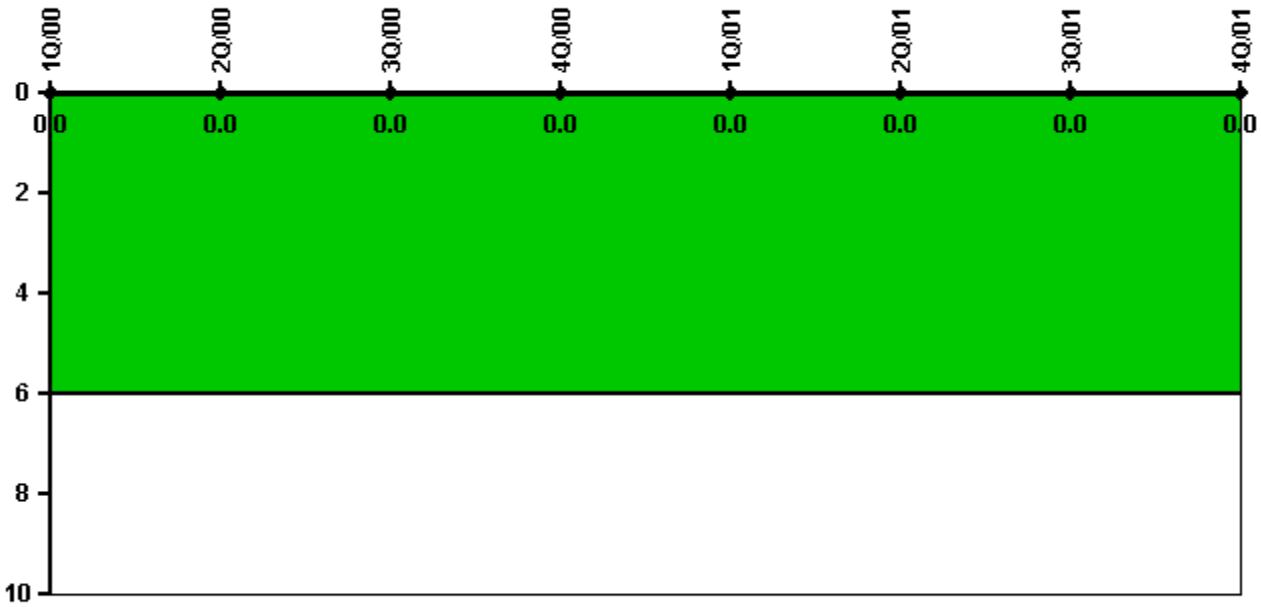
Thresholds: White > 2.0 Yellow > 10.0 Red > 20.0

#### Notes

Scrams with Loss of Normal Heat Removal	1Q/00	2Q/00	3Q/00	4Q/00	1Q/01	2Q/01	3Q/01	4Q/01
Scrams	0	0	0	0	0	0	0	0
Indicator value	0	0	0	0	0	0	0	0

Licensee Comments: none

### Unplanned Power Changes per 7000 Critical Hrs



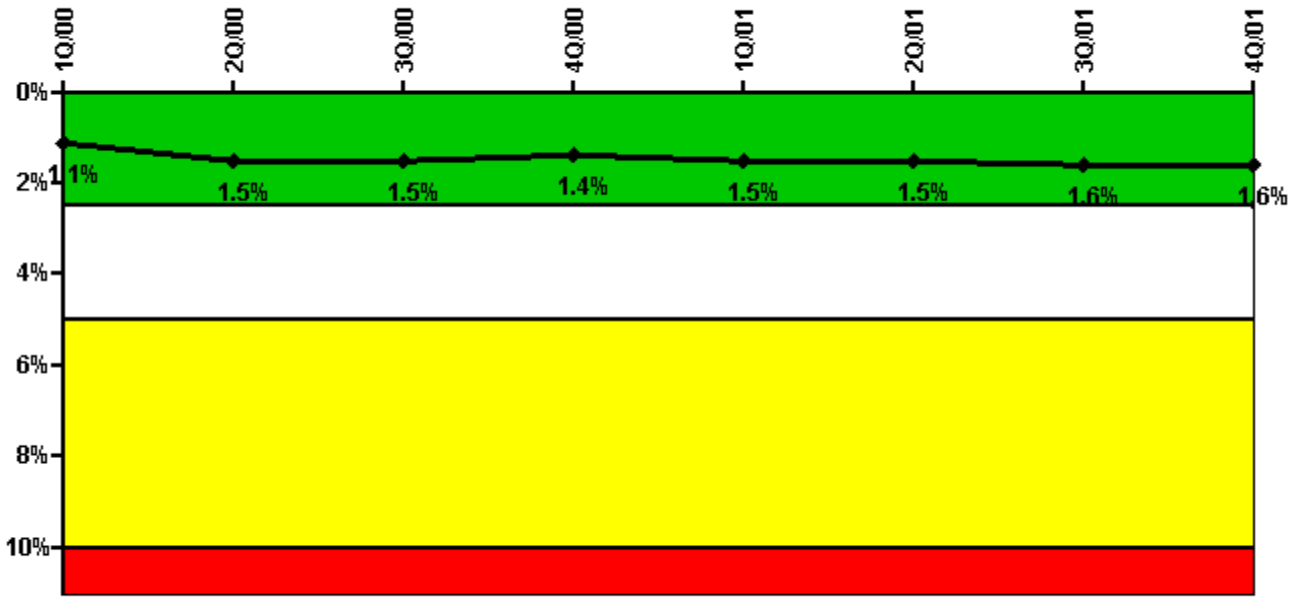
Thresholds: White > 6.0

### Notes

Unplanned Power Changes per 7000 Critical Hrs	1Q/00	2Q/00	3Q/00	4Q/00	1Q/01	2Q/01	3Q/01	4Q/01
Unplanned power changes	0	0	0	0	0	0	0	0
Critical hours	2184.0	1202.3	2208.0	2209.0	2160.0	2156.8	2040.2	723.8
Indicator value	0	0	0	0	0	0	0	0

Licensee Comments: none

### Safety System Unavailability, Emergency AC Power



Thresholds: White > 2.5% Yellow > 5.0% Red > 10.0%

#### Notes

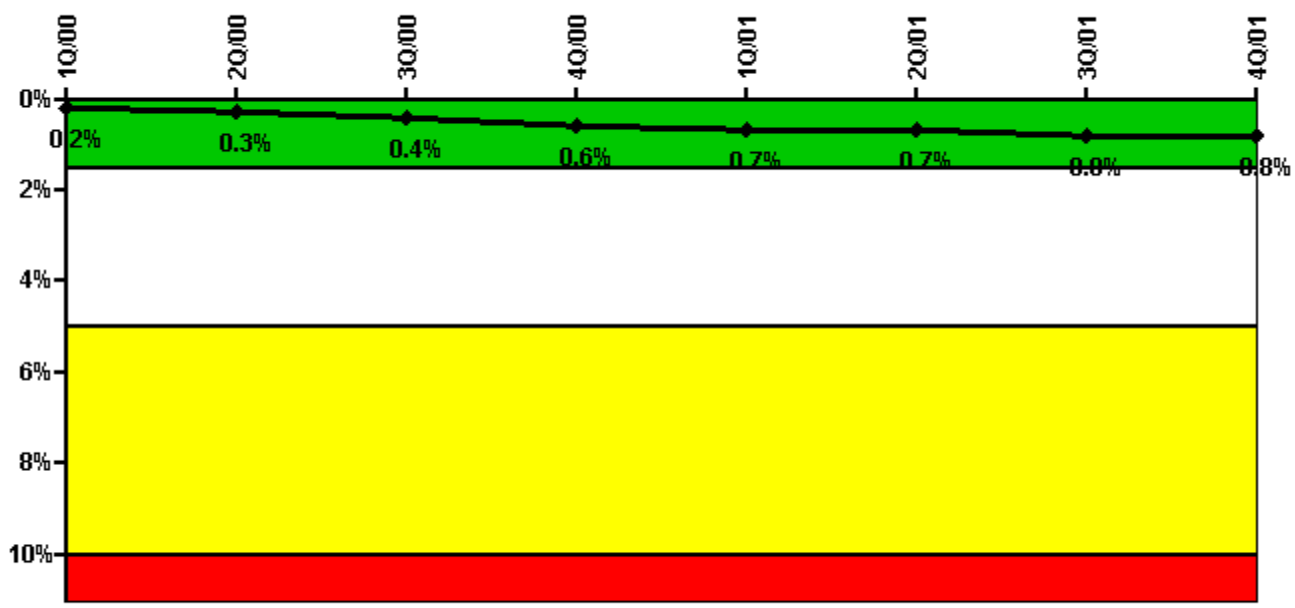
Safety System Unavailability, Emergency AC Power	1Q/00	2Q/00	3Q/00	4Q/00	1Q/01	2Q/01	3Q/01	4Q/01
<b>Train 1</b>								
Planned unavailable hours	26.91	106.24	37.00	25.48	34.02	47.22	25.83	32.54
Unplanned unavailable hours	0	0	0	5.07	0	0	0	0
Fault exposure hours	0	124.50	0	0	0	0	0	0
Effective Reset hours	0	0	0	0	0	0	0	0
Required hours	2184.00	2183.00	2208.00	2209.00	2160.00	2183.00	2208.00	2209.00
<b>Train 2</b>								
Planned unavailable hours	17.66	15.93	33.55	55.35	17.97	31.27	27.13	13.76
Unplanned unavailable hours	0	0	0	0	2.60	0	0	0
Fault exposure hours	0	0	0	0	0	0	0	0
Effective Reset hours	0	0	0	0	0	0	0	0
Required hours	2184.00	2183.00	2208.00	2209.00	2160.00	2183.00	2208.00	2209.00
<b>Indicator value</b>	<b>1.1%</b>	<b>1.5%</b>	<b>1.5%</b>	<b>1.4%</b>	<b>1.5%</b>	<b>1.5%</b>	<b>1.6%</b>	<b>1.6%</b>

#### Licensee Comments:

4Q/00: A review of corrective work orders for the 4th quarter of 2000 determined that 13.5 hours of unavailability were taken as planned during diesel generator testing. 5.07 of those hours should have been counted as unplanned due to non-safety related component failure in November 2000.

2Q/00: Review of equipment failure determined 124.5 hours of fault exposure should be applied to 2nd quarter 2000 data.

### Safety System Unavailability, High Pressure Injection System (HPSI)



Thresholds: White > 1.5% Yellow > 5.0% Red > 10.0%

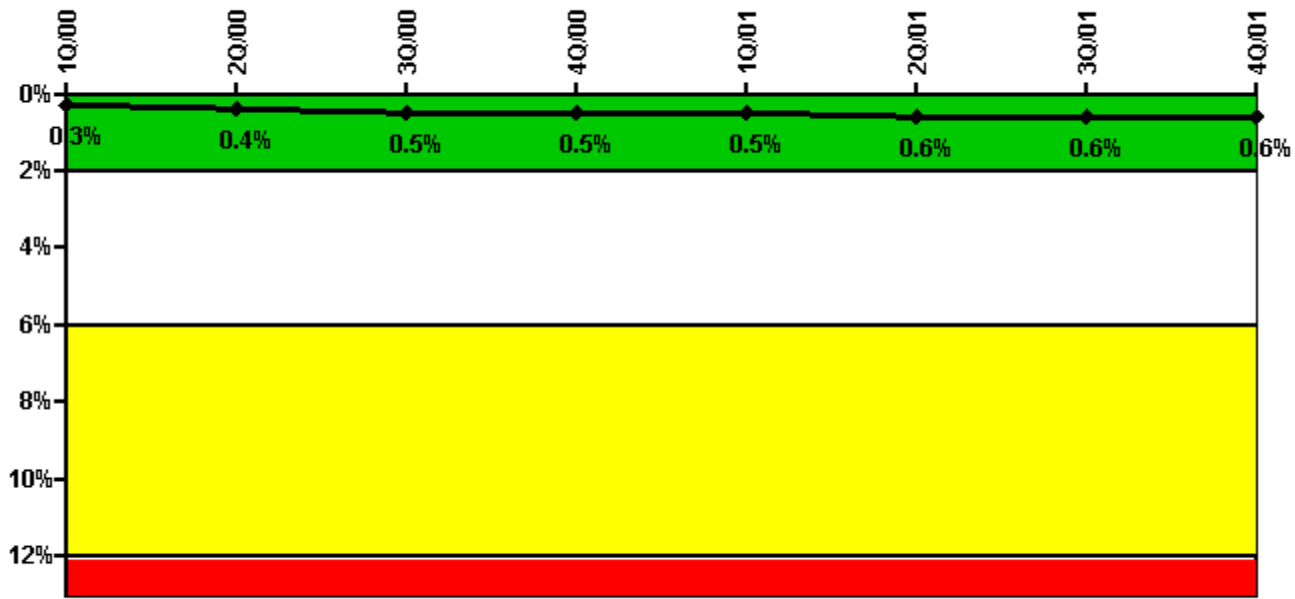
#### Notes

Safety System Unavailability, High Pressure Injection System (HPSI)	1Q/00	2Q/00	3Q/00	4Q/00	1Q/01	2Q/01	3Q/01	4Q/01
<b>Train 1</b>								
Planned unavailable hours	22.64	44.70	27.46	31.62	18.89	30.28	10.61	0
Unplanned unavailable hours	0	0	0	4.25	0	0	0	0
Fault exposure hours	0	0	0	0	0	0	0	0
Effective Reset hours	0	0	0	0	0	0	0	0
Required hours	2184.00	1202.30	2208.00	2209.00	2160.00	2156.76	2040.17	778.00
<b>Train 2</b>								
Planned unavailable hours	2.95	4.96	31.75	57.57	0.91	11.93	5.63	0
Unplanned unavailable hours	0	0	0	0	2.60	0	0	0
Fault exposure hours	0	0	0	0	0	0	0	0
Effective Reset hours	0	0	0	0	0	0	0	0
Required hours	2184.00	1202.30	2208.00	2209.00	2160.00	2156.76	2040.17	778.00
<b>Indicator value</b>	<b>0.2%</b>	<b>0.3%</b>	<b>0.4%</b>	<b>0.6%</b>	<b>0.7%</b>	<b>0.7%</b>	<b>0.8%</b>	<b>0.8%</b>

Licensee Comments:

4Q/00: A review of work performed determined that 4.25 hours of planned unavailability should have been counted as unplanned unavailability in the 4th quarter of 2000.

### Safety System Unavailability, Heat Removal System (AFW)



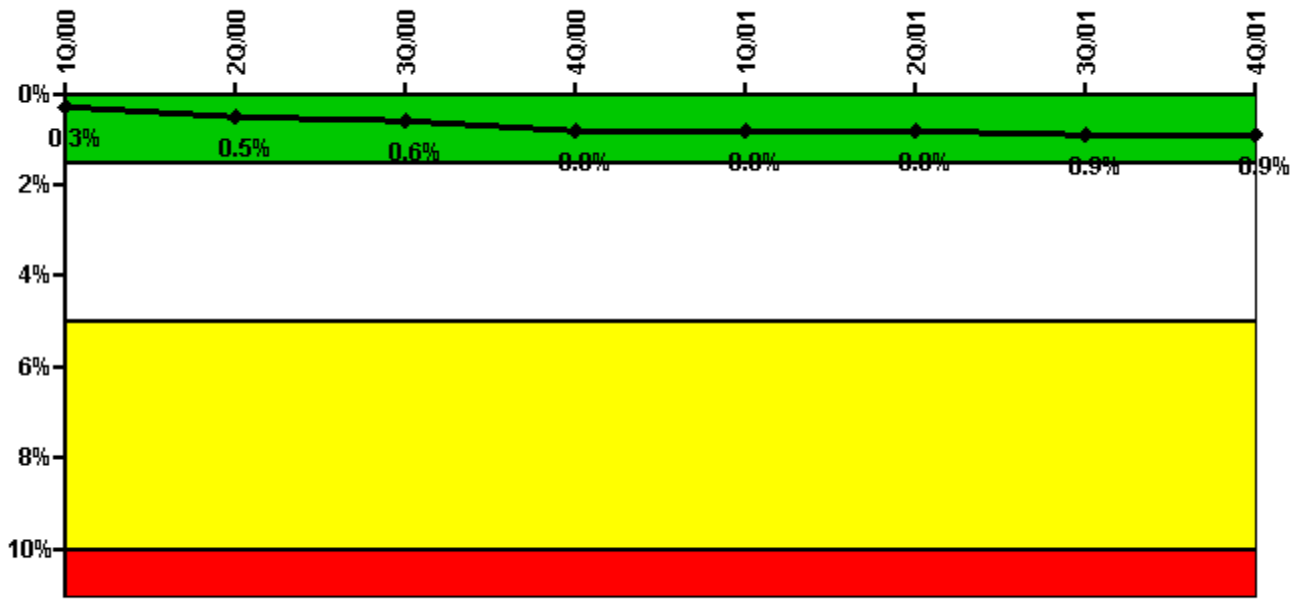
Thresholds: White > 2.0% Yellow > 6.0% Red > 12.0%

#### Notes

Safety System Unavailability, Heat Removal System (AFW)	1Q/00	2Q/00	3Q/00	4Q/00	1Q/01	2Q/01	3Q/01	4Q/01
<b>Train 1</b>								
Planned unavailable hours	8.29	51.27	9.06	16.55	10.07	30.33	1.39	0.35
Unplanned unavailable hours	0	0	5.92	0	0	0.30	0	0
Fault exposure hours	0	0	0	0	0	0	0	0
Effective Reset hours	0	0	0	0	0	0	0	0
Required hours	2184.00	1202.30	2208.00	2209.00	2160.00	2156.76	2076.00	812.10
<b>Train 2</b>								
Planned unavailable hours	2.25	18.45	13.40	39.62	1.09	10.72	2.22	0.52
Unplanned unavailable hours	0	0	8.57	0	2.60	15.35	0	0
Fault exposure hours	0	0	0	0	0	17.93	0	0
Effective Reset hours	0	0	0	0	0	0	0	0
Required hours	2184.00	1202.30	2208.00	2209.00	2160.00	2156.76	2076.00	812.10
<b>Train 3</b>								
Planned unavailable hours	23.18	17.21	1.23	2.84	3.46	3.20	2.90	3.71
Unplanned unavailable hours	0	0	21.82	0	3.92	3.88	0	0
Fault exposure hours	0	0	0	0	0	0	0	0
Effective Reset hours	0	0	0	0	0	0	0	0
Required hours	2184.00	1202.30	2208.00	2209.00	2160.00	2156.76	2076.00	812.10
<b>Indicator value</b>	<b>0.3%</b>	<b>0.4%</b>	<b>0.5%</b>	<b>0.5%</b>	<b>0.5%</b>	<b>0.6%</b>	<b>0.6%</b>	<b>0.6%</b>

Licensee Comments: none

### Safety System Unavailability, Residual Heat Removal System



Thresholds: White > 1.5% Yellow > 5.0% Red > 10.0%

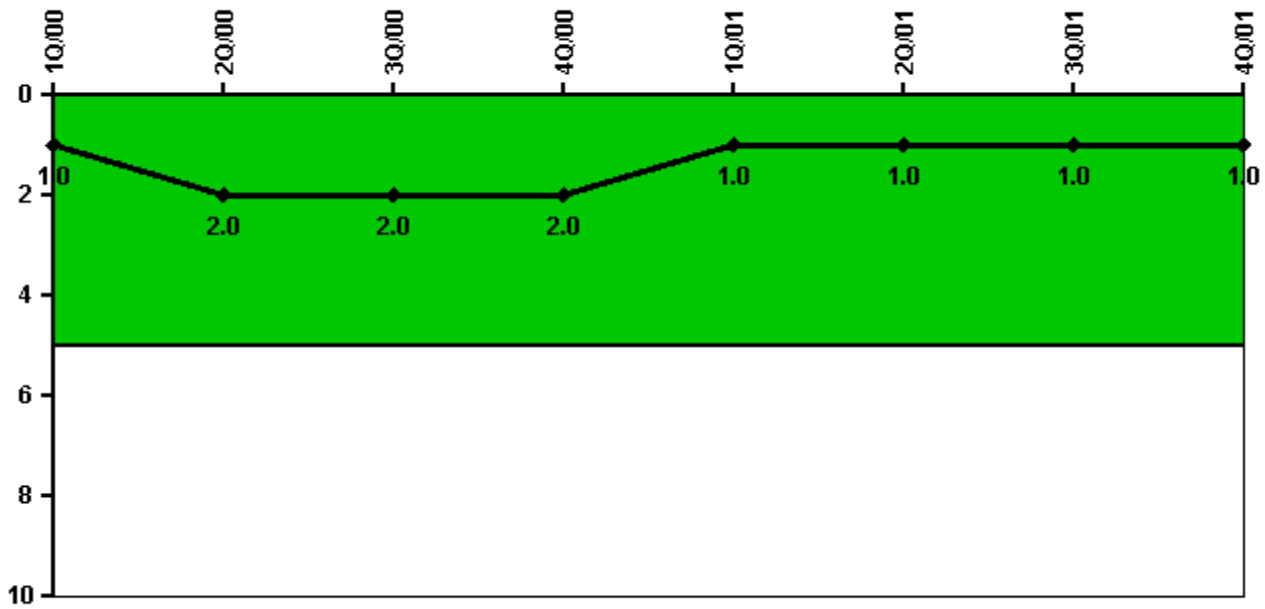
#### Notes

Safety System Unavailability, Residual Heat Removal System	1Q/00	2Q/00	3Q/00	4Q/00	1Q/01	2Q/01	3Q/01	4Q/01
<b>Train 1</b>								
Planned unavailable hours	24.45	94.71	28.44	31.99	24.15	28.66	3.98	0.66
Unplanned unavailable hours	0	0	0	4.25	0	0	0	0
Fault exposure hours	0	0	0	0	0	0	0	0
Effective Reset hours	0	0	0	0	0	0	0	0
Required hours	2184.00	2183.00	2208.00	2209.00	2160.00	2183.00	2208.00	2209.00
<b>Train 2</b>								
Planned unavailable hours	24.27	5.94	32.50	57.65	0.90	9.75	11.99	0.55
Unplanned unavailable hours	0	0	0	0	2.60	0	0	0
Fault exposure hours	0	0	0	0	0	0	0	0
Effective Reset hours	0	0	0	0	0	0	0	0
Required hours	2184.00	2183.00	2208.00	2209.00	2160.00	2183.00	2208.00	2209.00
<b>Indicator value</b>	<b>0.3%</b>	<b>0.5%</b>	<b>0.6%</b>	<b>0.8%</b>	<b>0.8%</b>	<b>0.8%</b>	<b>0.9%</b>	<b>0.9%</b>

Licensee Comments:

4Q/00: A review of work performed determined that 4.25 hours of planned unavailability should have been counted as unplanned unavailability in the 4th quarter of 2000.

### Safety System Functional Failures (PWR)



Thresholds: White > 5.0

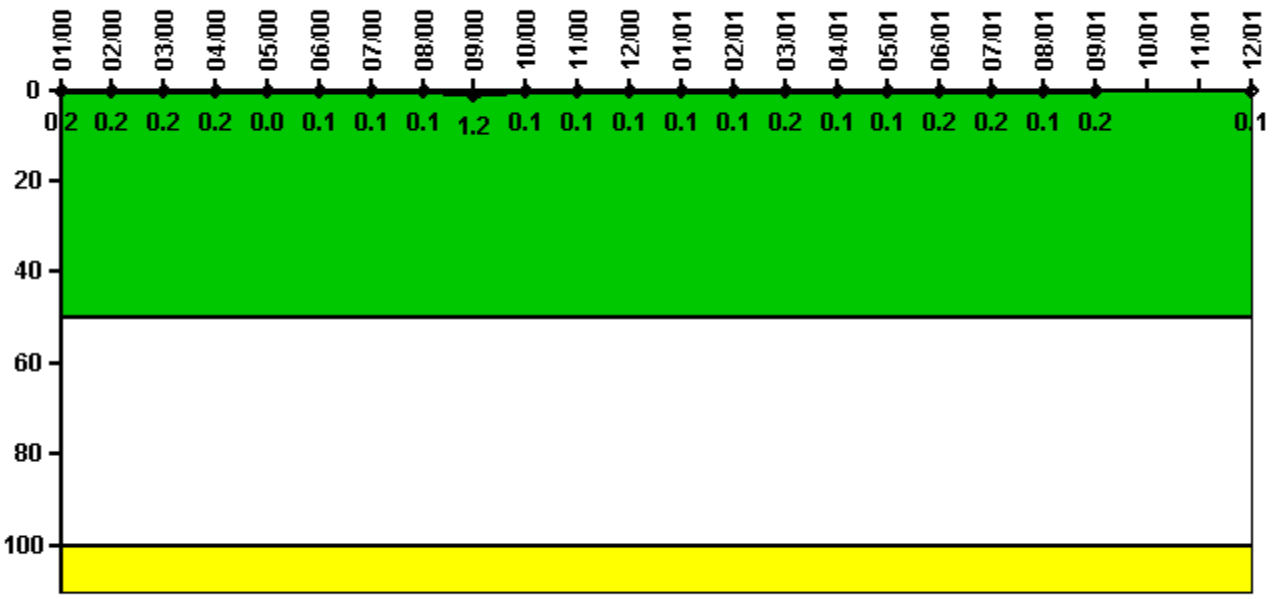
#### Notes

Safety System Functional Failures (PWR)	1Q/00	2Q/00	3Q/00	4Q/00	1Q/01	2Q/01	3Q/01	4Q/01
Safety System Functional Failures	1	1	0	0	0	1	0	0
Indicator value	1	2	2	2	1	1	1	1

Licensee Comments: none



### Reactor Coolant System Activity



Thresholds: White > 50.0 Yellow > 100.0

#### Notes

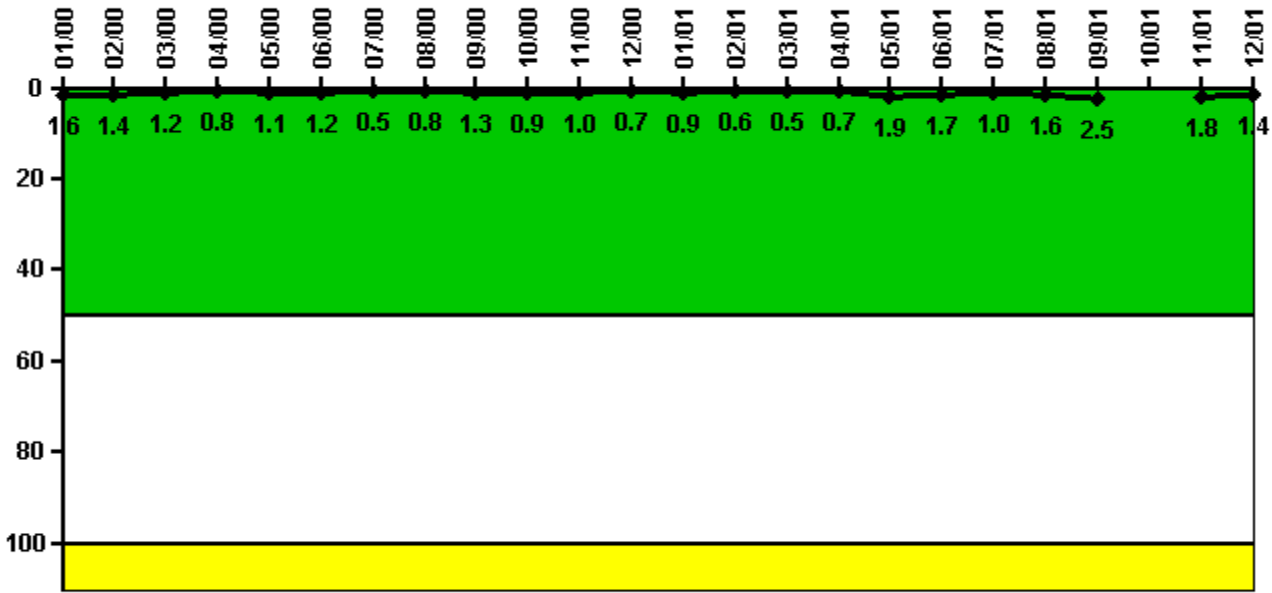
Reactor Coolant System Activity	1/00	2/00	3/00	4/00	5/00	6/00	7/00	8/00	9/00	10/00	11/00	12/00
Maximum activity	0.000340	0.000347	0.000362	0.000386	0	0.000207	0.000209	0.000231	0.002411	0.000247	0.000248	0.000253
Technical specification limit	0.2	0.2	0.2	0.2	0.2	0.2	0.2	0.2	0.2	0.2	0.2	0.2
Indicator value	0.2	0.2	0.2	0.2	0	0.1	0.1	0.1	1.2	0.1	0.1	0.1

Reactor Coolant System Activity	1/01	2/01	3/01	4/01	5/01	6/01	7/01	8/01	9/01	10/01	11/01	12/01
Maximum activity	0.000260	0.000270	0.000320	0.000286	0.000282	0.000310	0.000301	0.000295	0.000317	N/A	N/A	0.000203
Technical specification limit	0.2	0.2	0.2	0.2	0.2	0.2	0.2	0.2	0.2	0.2	0.2	0.2
Indicator value	0.1	0.1	0.2	0.1	0.1	0.2	0.2	0.1	0.2	N/A	N/A	0.1

Licensee Comments: none

### Reactor Coolant System Leakage



Thresholds: White > 50.0 Yellow > 100.0

#### Notes

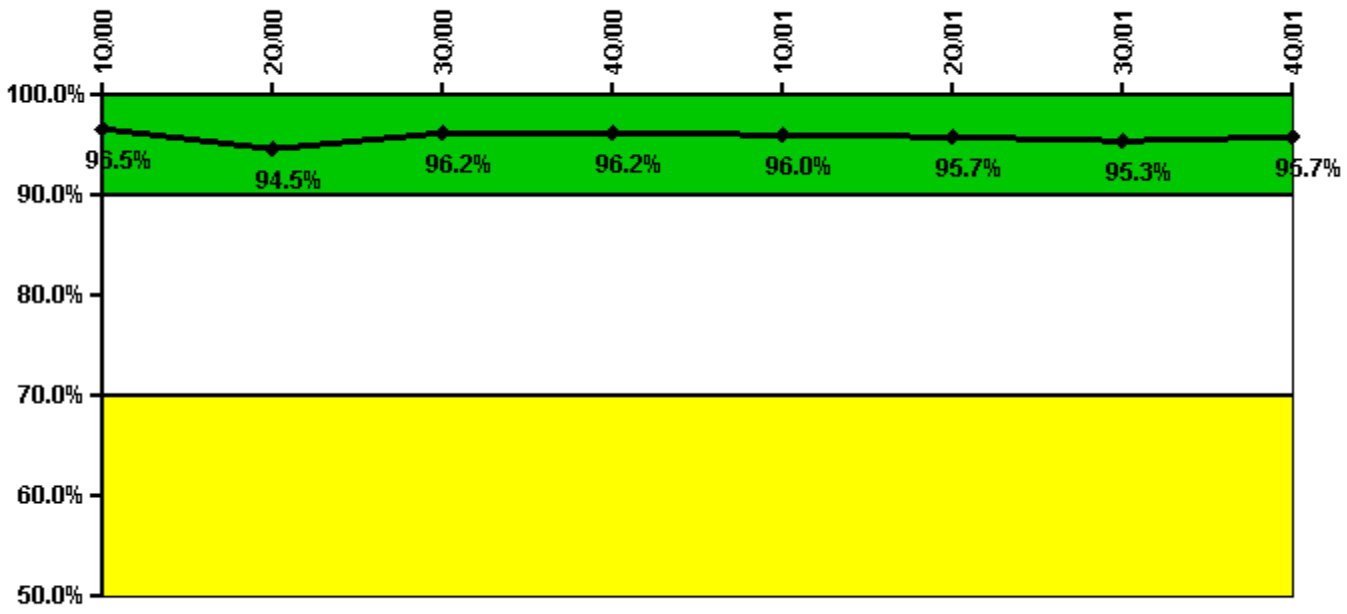
Reactor Coolant System Leakage	1/00	2/00	3/00	4/00	5/00	6/00	7/00	8/00	9/00	10/00	11/00	12/00
Maximum leakage	0.162	0.145	0.118	0.081	0.112	0.115	0.047	0.078	0.134	0.090	0.102	0.072
Technical specification limit	10.0	10.0	10.0	10.0	10.0	10.0	10.0	10.0	10.0	10.0	10.0	10.0
Indicator value	1.6	1.4	1.2	0.8	1.1	1.2	0.5	0.8	1.3	0.9	1.0	0.7

Reactor Coolant System Leakage	1/01	2/01	3/01	4/01	5/01	6/01	7/01	8/01	9/01	10/01	11/01	12/01
Maximum leakage	0.088	0.062	0.054	0.070	0.193	0.173	0.097	0.156	0.248	N/A	0.181	0.141
Technical specification limit	10.0	10.0	10.0	10.0	10.0	10.0	10.0	10.0	10.0	10.0	10.0	10.0
Indicator value	0.9	0.6	0.5	0.7	1.9	1.7	1.0	1.6	2.5	N/A	1.8	1.4

Licensee Comments: none

### Drill/Exercise Performance



Thresholds: White < 90.0% Yellow < 70.0%

### Notes

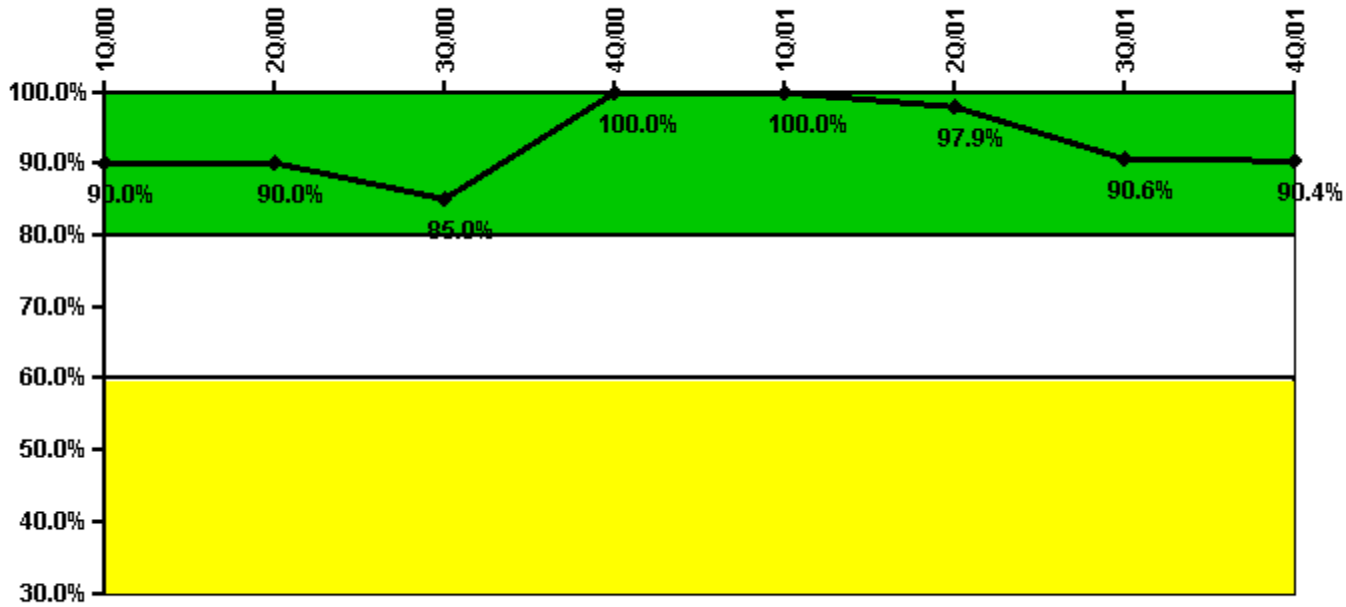
Drill/Exercise Performance	1Q/00	2Q/00	3Q/00	4Q/00	1Q/01	2Q/01	3Q/01	4Q/01
Successful opportunities	42.0	23.0	0	2.0	25.0	56.0	8.0	0
Total opportunities	42.0	24.0	0	2.0	26.0	58.0	11.0	0
Indicator value	96.5%	94.5%	96.2%	96.2%	96.0%	95.7%	95.3%	95.7%

#### Licensee Comments:

3Q/01: An in-depth review of all DEP data from 1998 to present was performed. Minor tabulation errors were found that resulted in revision to data for the second and third quarters of 2001.

2Q/01: An in-depth review of all DEP data from 1998 to present was performed. Minor tabulation errors were found that resulted in revision to data for the second and third quarters of 2001.

### ERO Drill Participation



Thresholds: White < 80.0% Yellow < 60.0%

### Notes

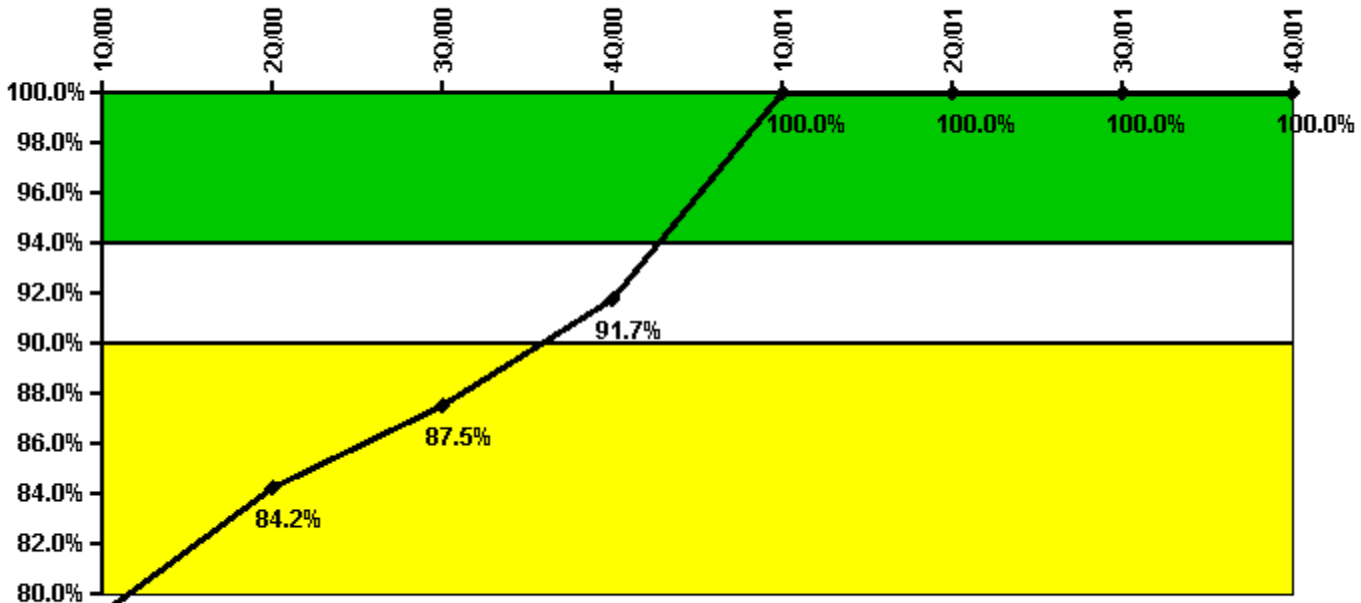
ERO Drill Participation	1Q/00	2Q/00	3Q/00	4Q/00	1Q/01	2Q/01	3Q/01	4Q/01
Participating Key personnel	36.0	36.0	34.0	40.0	39.0	47.0	48.0	47.0
Total Key personnel	40.0	40.0	40.0	40.0	39.0	48.0	53.0	52.0
Indicator value	90.0%	90.0%	85.0%	100.0%	100.0%	97.9%	90.6%	90.4%

### Licensee Comments:

3Q/01: An in-depth review of all DEP data from 1998 to present was performed. Minor tabulation errors were found that resulted in revision to data for the second and third quarters of 2001.

2Q/01: An in-depth review of all DEP data from 1998 to present was performed. Minor tabulation errors were found that resulted in revision to data for the second and third quarters of 2001.

### Alert & Notification System



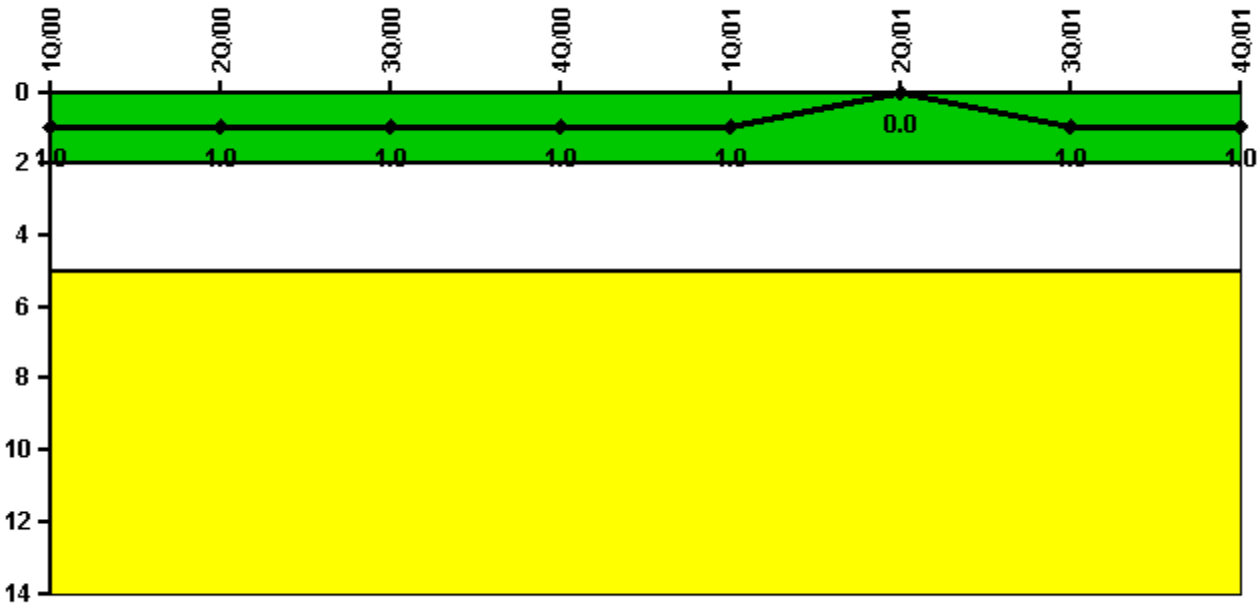
Thresholds: White < 94.0% Yellow < 90.0%

#### Notes

Alert & Notification System	1Q/00	2Q/00	3Q/00	4Q/00	1Q/01	2Q/01	3Q/01	4Q/01
Successful siren-tests	52	78	78	78	78	78	78	78
Total sirens-tests	78	78	78	78	78	78	78	78
Indicator value	79.2%	84.2%	87.5%	91.7%	100.0%	100.0%	100.0%	100.0%

Licensee Comments: none

### Occupational Exposure Control Effectiveness



Thresholds: White > 2.0 Yellow > 5.0

#### Notes

Occupational Exposure Control Effectiveness	1Q/00	2Q/00	3Q/00	4Q/00	1Q/01	2Q/01	3Q/01	4Q/01
High radiation area occurrences	0	0	0	0	0	0	1	0
Very high radiation area occurrences	0	1	0	0	0	0	0	0
Unintended exposure occurrences	0	0	0	0	0	0	0	0
<b>Indicator value</b>	<b>1</b>	<b>1</b>	<b>1</b>	<b>1</b>	<b>1</b>	<b>0</b>	<b>1</b>	<b>1</b>

Licensee Comments: none

### RETS/ODCM Radiological Effluent



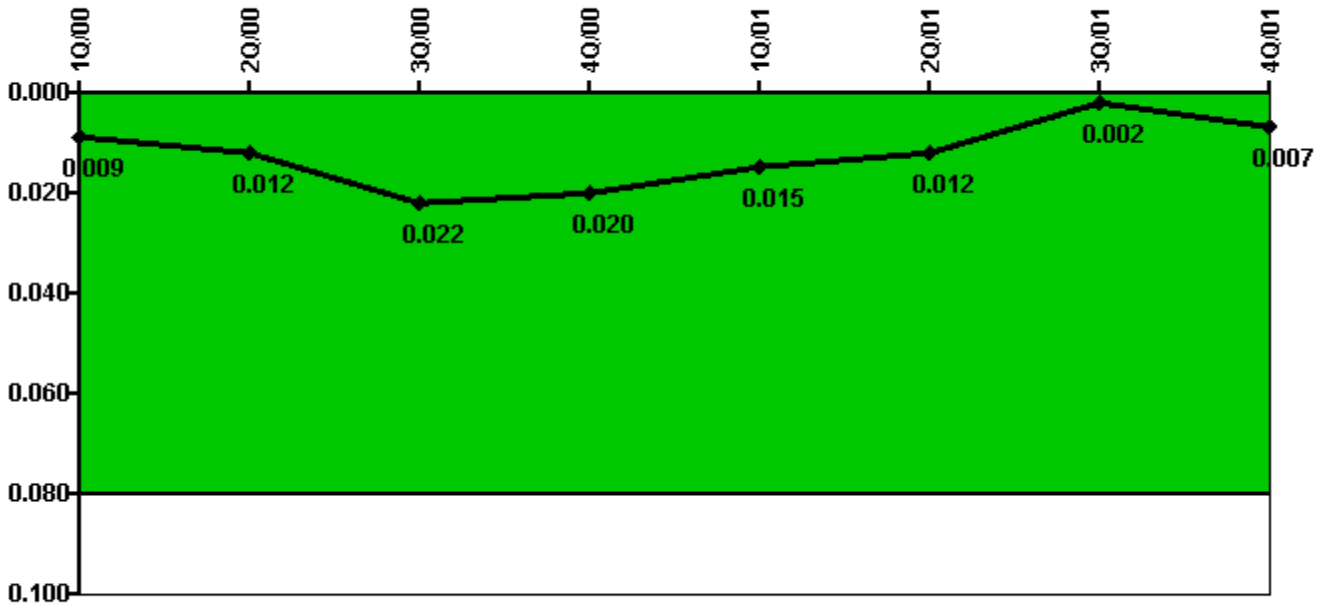
Thresholds: White > 1.0 Yellow > 3.0

#### Notes

RETS/ODCM Radiological Effluent	1Q/00	2Q/00	3Q/00	4Q/00	1Q/01	2Q/01	3Q/01	4Q/01
RETS/ODCM occurrences	0	0	0	0	0	0	0	0
Indicator value	0	0	0	0	0	0	0	0

Licensee Comments: none

### Protected Area Security Performance Index



Thresholds: White > 0.080

#### Notes

Protected Area Security Performance Index	1Q/00	2Q/00	3Q/00	4Q/00	1Q/01	2Q/01	3Q/01	4Q/01
IDS compensatory hours	56.50	73.50	179.70	0	0.50	9.70	1.70	113.70
CCTV compensatory hours	20.0	0.1	0	16.5	0	0	0	0
IDS normalization factor	1.00	1.00	1.00	1.00	1.00	1.00	1.00	1.00
CCTV normalization factor	1.0	1.0	1.0	1.0	1.0	1.0	1.0	1.0
<b>Index Value</b>	<b>0.009</b>	<b>0.012</b>	<b>0.022</b>	<b>0.020</b>	<b>0.015</b>	<b>0.012</b>	<b>0.002</b>	<b>0.007</b>

Licensee Comments:

2Q/01: Data for second quarter 2001 was changed from 9.4 to 9.7 hours. This was due to a data conversion error.



### Personnel Screening Program



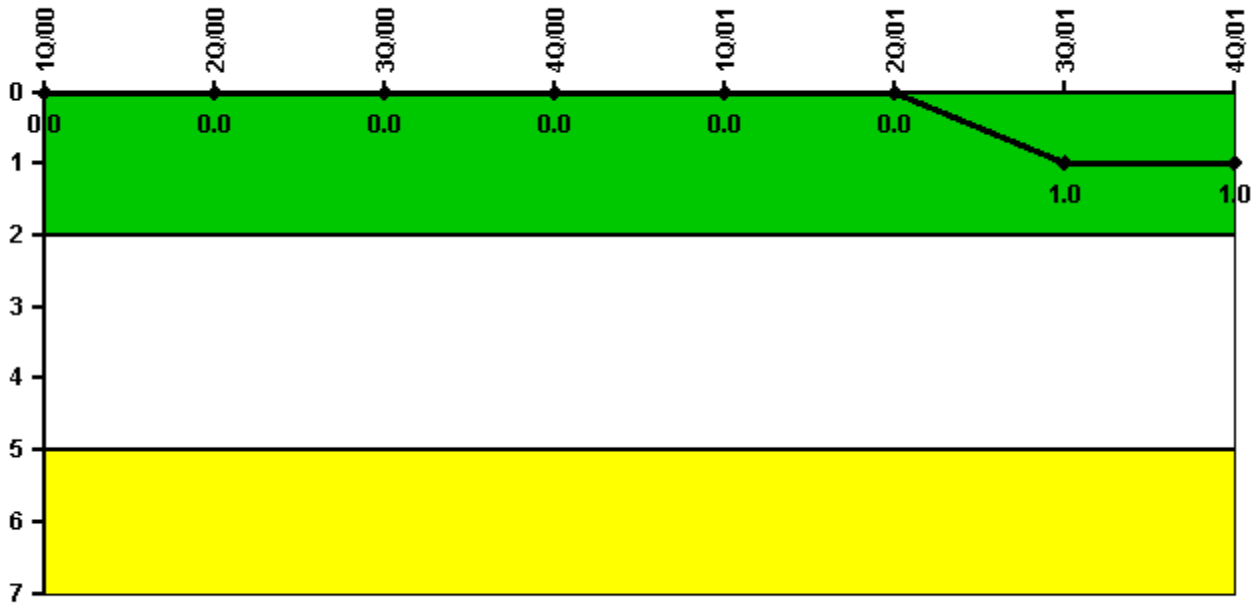
Thresholds: White > 2.0 Yellow > 5.0

#### Notes

Personnel Screening Program	1Q/00	2Q/00	3Q/00	4Q/00	1Q/01	2Q/01	3Q/01	4Q/01
Program failures	0	0	0	0	0	0	0	0
Indicator value	0	0	0	0	0	0	0	0

Licensee Comments: none

### FFD/Personnel Reliability



Thresholds: White > 2.0 Yellow > 5.0

#### Notes

FFD/Personnel Reliability	1Q/00	2Q/00	3Q/00	4Q/00	1Q/01	2Q/01	3Q/01	4Q/01
Program Failures	0	0	0	0	0	0	1	0
Indicator value	0	0	0	0	0	0	1	1

Licensee Comments: none

▲ [PI Summary](#) | [Inspection Findings Summary](#) | [Action Matrix Summary](#) | [Reactor Oversight Process](#)

Last Modified: March 15, 2002