

### Fort Calhoun

#### 4Q/2001 Performance Indicators

Licensee's General Comments: none

#### Unplanned Scrams per 7000 Critical Hrs



Thresholds: White > 3.0 Yellow > 6.0 Red > 25.0

#### Notes

Unplanned Scrams per 7000 Critical Hrs	1Q/00	2Q/00	3Q/00	4Q/00	1Q/01	2Q/01	3Q/01	4Q/01
Unplanned scrams	0	0	0	0	0	0	0	0
Critical hours	2184.0	2156.1	2208.0	1664.3	1776.8	1541.0	2208.0	2208.0
Indicator value	0	0	0	0	0	0	0	0

Licensee Comments: none

### Scrams with Loss of Normal Heat Removal



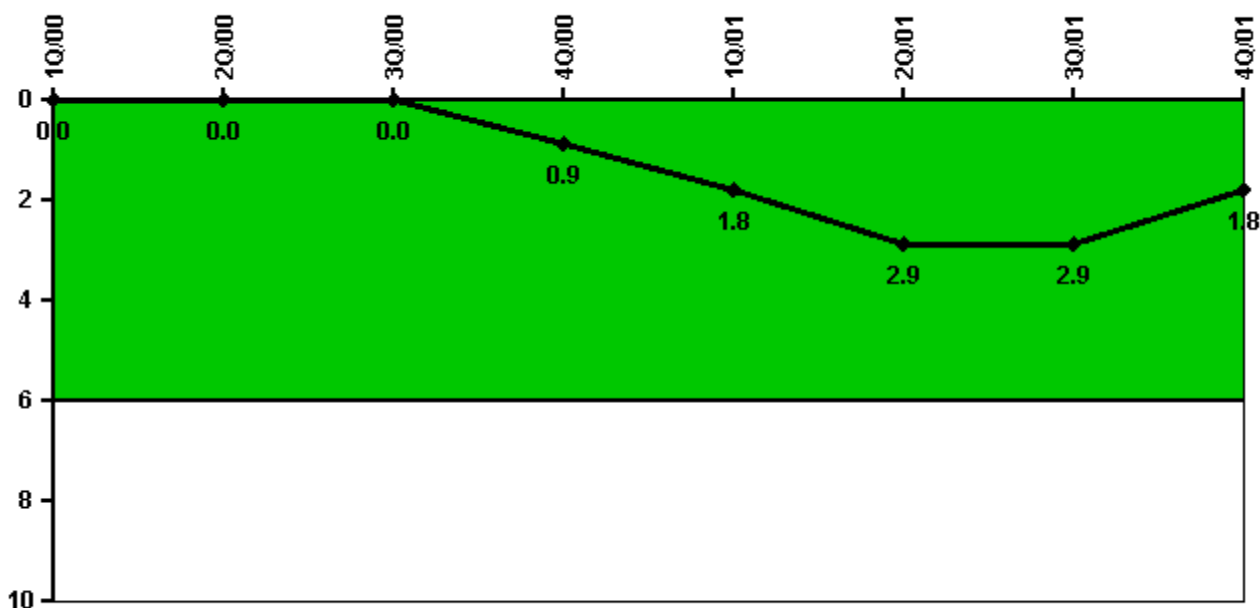
Thresholds: White > 2.0 Yellow > 10.0 Red > 20.0

### Notes

Scrams with Loss of Normal Heat Removal	1Q/00	2Q/00	3Q/00	4Q/00	1Q/01	2Q/01	3Q/01	4Q/01
Scrams	0	0	0	0	0	0	0	0
Indicator value	0	0	0	0	0	0	0	0

Licensee Comments: none

### Unplanned Power Changes per 7000 Critical Hrs



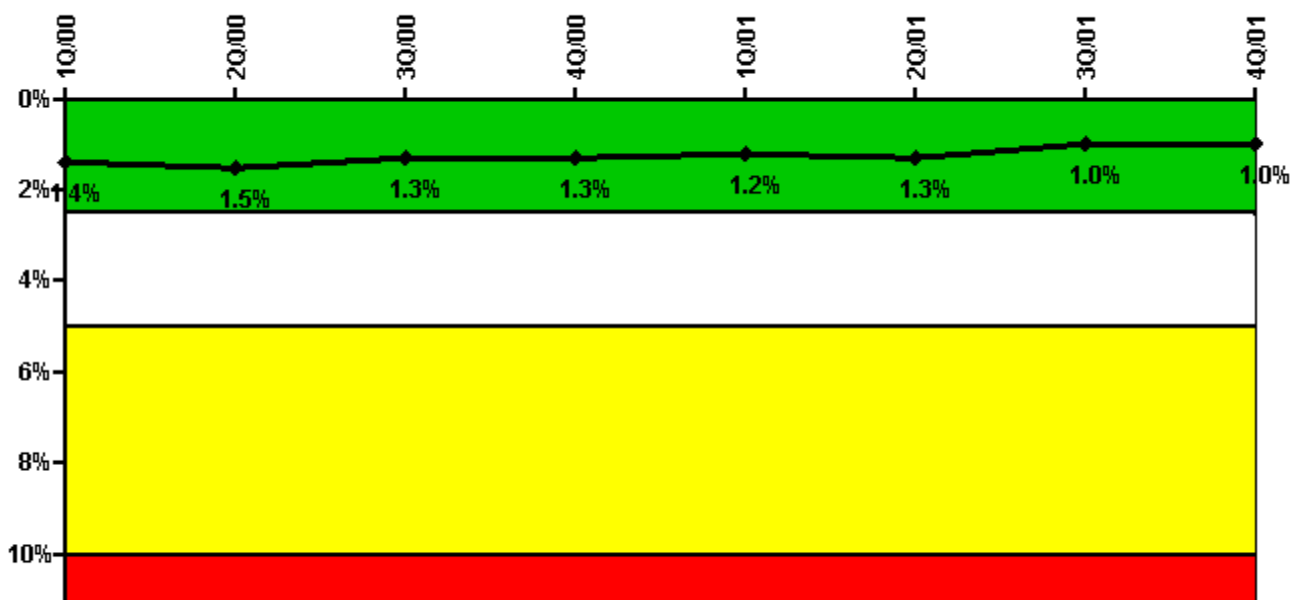
Thresholds: White > 6.0

### Notes

Unplanned Power Changes per 7000 Critical Hrs	1Q/00	2Q/00	3Q/00	4Q/00	1Q/01	2Q/01	3Q/01	4Q/01
Unplanned power changes	0	0	0	1.0	1.0	1.0	0	0
Critical hours	2184.0	2156.1	2208.0	1664.3	1776.8	1541.0	2208.0	2208.0
Indicator value	0	0	0	0.9	1.8	2.9	2.9	1.8

Licensee Comments: none

### Safety System Unavailability, Emergency AC Power



Thresholds: White > 2.5% Yellow > 5.0% Red > 10.0%

#### Notes

Safety System Unavailability, Emergency AC Power	1Q/00	2Q/00	3Q/00	4Q/00	1Q/01	2Q/01	3Q/01	4Q/01
<b>Train 1</b>								
Planned unavailable hours	12.90	26.90	16.40	31.50	15.40	14.88	24.50	69.80
Unplanned unavailable hours	0	3.30	0	5.80	0	0	0	5.00
Fault exposure hours	0	0	0	0	0	0	0	0
Effective Reset hours	420.10	0	0	0	0	0	0	0
Required hours	2184.00	2183.00	2208.00	2209.00	2160.00	2184.00	2208.00	2208.00
<b>Train 2</b>								
Planned unavailable hours	13.80	17.40	22.20	17.20	23.05	10.58	11.00	14.20
Unplanned unavailable hours	0	12.00	0	8.00	0	0	0	0.90
Fault exposure hours	0	0	0	0	0	0	0	0
Effective Reset hours	0	0	0	0	0	0	0	0
Required hours	2184.00	2183.00	2208.00	2209.00	2160.00	2184.00	2208.00	2208.00
<b>Indicator value</b>	<b>1.4%</b>	<b>1.5%</b>	<b>1.3%</b>	<b>1.3%</b>	<b>1.2%</b>	<b>1.3%</b>	<b>1.0%</b>	<b>1.0%</b>

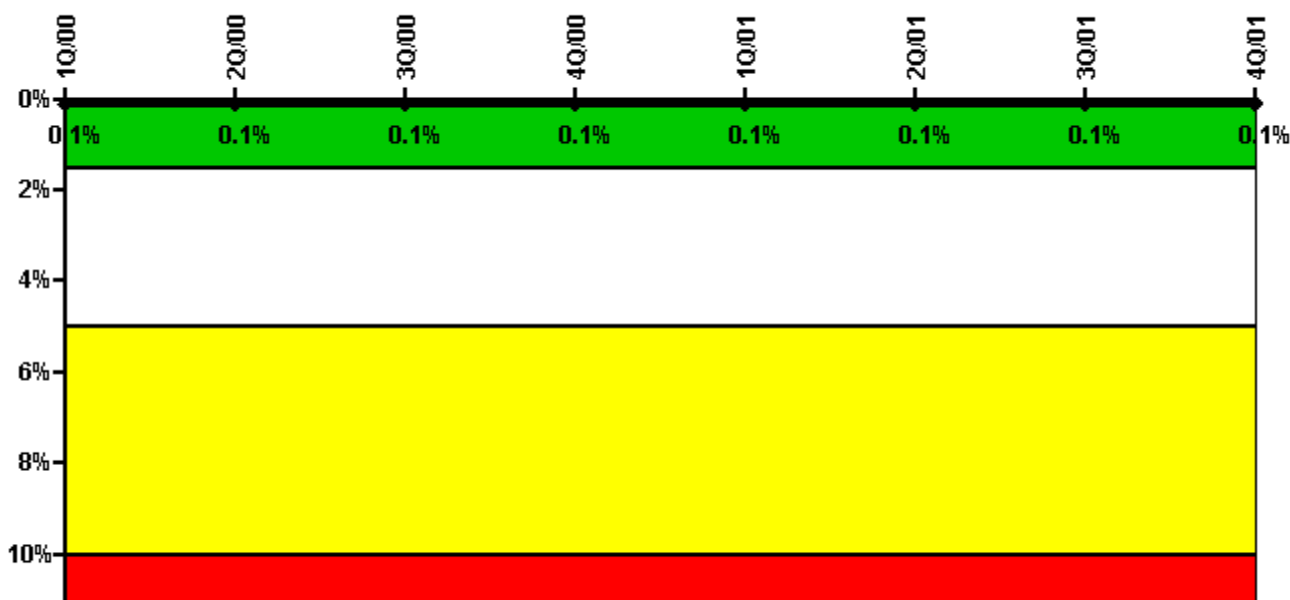
Licensee Comments:

3Q/97: The conditions in NEI 99-02 rev. 0 for removal of the 420.1 hours of fault exposure from train 1 have been met and the fault exposure is being reset to 0.

Effective Reset Comments:

1Q/00: Reset of fault exposure hours as requested by the NRC

### Safety System Unavailability, High Pressure Injection System (HPSI)



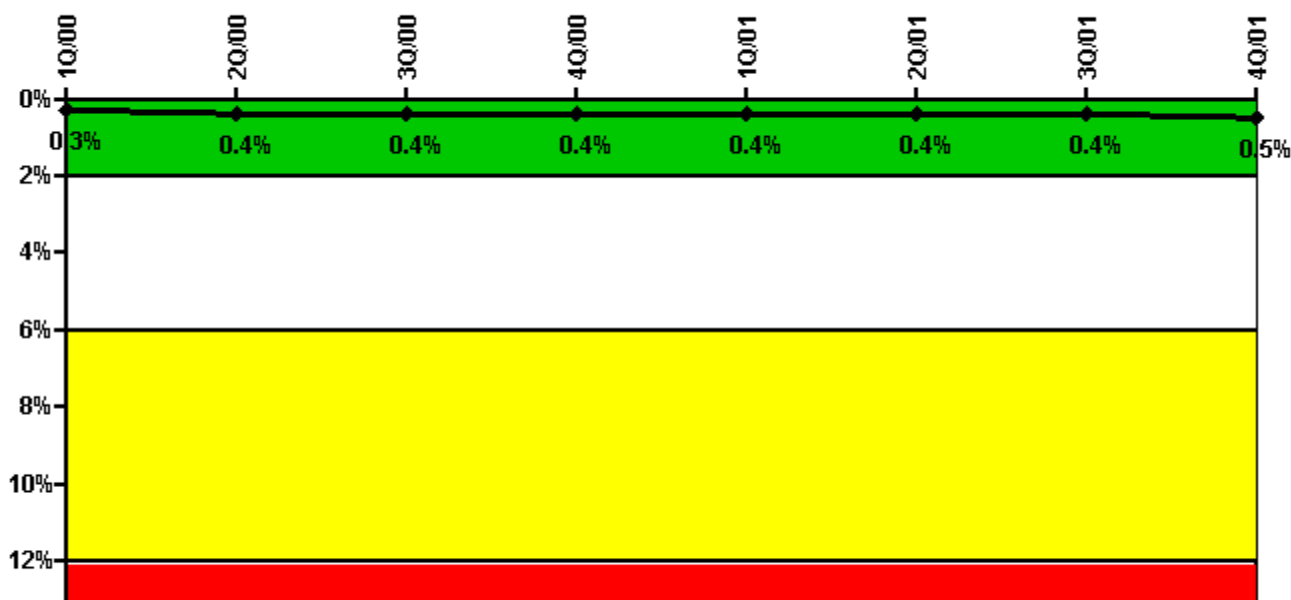
Thresholds: White > 1.5% Yellow > 5.0% Red > 10.0%

#### Notes

Safety System Unavailability, High Pressure Injection System (HPSI)	1Q/00	2Q/00	3Q/00	4Q/00	1Q/01	2Q/01	3Q/01	4Q/01
<b>Train 1</b>								
Planned unavailable hours	0	0	0	0	0	0	0	0
Unplanned unavailable hours	0	0	0	0	0	0	0	0
Fault exposure hours	0	0	0	0	0	0	0	0
Effective Reset hours	0	0	0	0	0	0	0	0
Required hours	2184.00	2183.00	2208.00	1664.30	1776.83	1541.00	2208.00	2208.00
<b>Train 2</b>								
Planned unavailable hours	9.20	6.60	0.50	0.40	5.40	0	8.90	1.40
Unplanned unavailable hours	0	0	0	0	0	0	0	0
Fault exposure hours	0	0	0	0	0	0	0	0
Effective Reset hours	0	0	0	0	0	0	0	0
Required hours	2184.00	2183.00	2208.00	1664.30	1776.83	1541.00	2208.00	2208.00
<b>Indicator value</b>	<b>0.1%</b>	<b>0.1%</b>	<b>0.1%</b>	<b>0.1%</b>	<b>0.1%</b>	<b>0.1%</b>	<b>0.1%</b>	<b>0.1%</b>

Licensee Comments: none

### Safety System Unavailability, Heat Removal System (AFW)



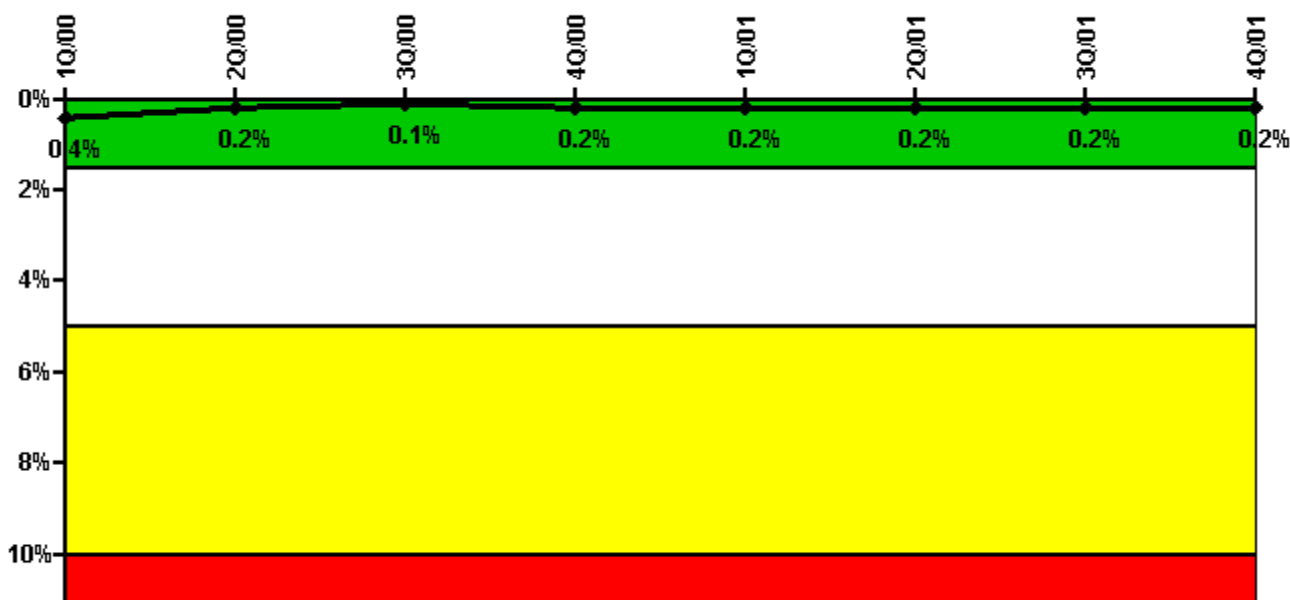
Thresholds: White > 2.0% Yellow > 6.0% Red > 12.0%

#### Notes

Safety System Unavailability, Heat Removal System (AFW)	1Q/00	2Q/00	3Q/00	4Q/00	1Q/01	2Q/01	3Q/01	4Q/01
<b>Train 1</b>								
Planned unavailable hours	8.30	1.05	17.88	12.69	3.68	0	0	19.72
Unplanned unavailable hours	0	0	0	0	0	0	0	0
Fault exposure hours	0	0	0	0	0	0	0	0
Effective Reset hours	0	0	0	0	0	0	0	0
Required hours	2184.00	2183.00	2208.00	1664.28	1776.83	1541.00	2208.00	2208.00
<b>Train 2</b>								
Planned unavailable hours	10.45	7.00	0.90	0	6.10	12.50	14.08	10.44
Unplanned unavailable hours	0	28.10	0	0	0	11.00	0	0
Fault exposure hours	0	0	0	0	0	0	0	0
Effective Reset hours	0	0	0	0	0	0	0	0
Required hours	2184.00	2155.10	2208.00	1664.28	1776.83	1541.00	2208.00	2208.00
<b>Indicator value</b>	<b>0.3%</b>	<b>0.4%</b>	<b>0.4%</b>	<b>0.4%</b>	<b>0.4%</b>	<b>0.4%</b>	<b>0.4%</b>	<b>0.5%</b>

Licensee Comments: none

### Safety System Unavailability, Residual Heat Removal System



Thresholds: White > 1.5% Yellow > 5.0% Red > 10.0%

#### Notes

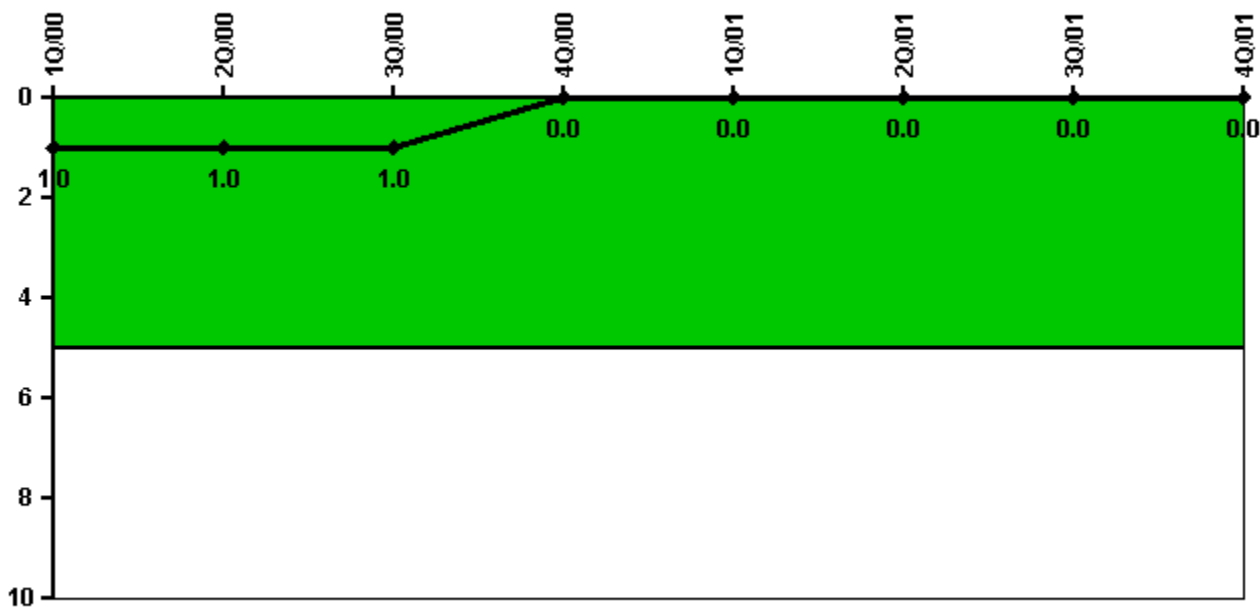
Safety System Unavailability, Residual Heat Removal System	1Q/00	2Q/00	3Q/00	4Q/00	1Q/01	2Q/01	3Q/01	4Q/01
<b>Train 1</b>								
Planned unavailable hours	4.90	2.90	0.30	21.60	4.40	0.40	0.40	6.20
Unplanned unavailable hours	0	0	0	0	0	0	0	0.10
Fault exposure hours	0	0	0	0	0	0	0	0
Effective Reset hours	0	0	0	0	0	0	0	0
Required hours	2184.00	2156.10	2208.00	1664.30	1776.83	1541.00	2208.00	2208.00
<b>Train 2</b>								
Planned unavailable hours	1.30	8.50	0	0	3.20	0	0	0
Unplanned unavailable hours	0	0	0	0	0	0	0	0
Fault exposure hours	0	0	0	0	0	0	0	0
Effective Reset hours	0	0	0	0	0	0	0	0
Required hours	2184.00	2156.10	2208.00	1664.30	1776.83	1541.00	2208.00	2208.00
<b>Train 3</b>								
Planned unavailable hours	0	6.20	0	0.40	0	0	0	0
Unplanned unavailable hours	0	0	0	0	0	0	0	0
Fault exposure hours	0	0	0	0	0	0	0	0
Effective Reset hours	0	0	0	0	0	0	0	0
Required hours	0	26.90	0	544.70	383.17	642.00	0	0
<b>Train 4</b>								
Planned unavailable hours	0	0	0	2.00	0	0	0	0
Unplanned unavailable hours	0	0	0	0	0	0	0	0
Fault exposure hours	0	0	0	0	0	0	0	0
Effective Reset hours	0	0	0	0	0	0	0	0
Required hours	0	26.90	0	544.70	383.17	642.00	0	0
<b>Indicator value</b>	<b>0.4%</b>	<b>0.2%</b>	<b>0.1%</b>	<b>0.2%</b>	<b>0.2%</b>	<b>0.2%</b>	<b>0.2%</b>	<b>0.2%</b>

#### Licensee Comments:

3Q/01: RHR Unavailable hours for 2Q96 through 3Q01 revised to reflect changes resulting from internal review. Changes did not result in a threshold color change.

2Q/00: Train 1 includes SI-3A. Train 2 includes SI-3B. Train 3 includes SI-1A. Train 4 includes SI-1B and SI-3C. Data for 2Q96 through 2Q00 submitted as part of the expansion to 4 trains for CE plants FAQ 172, Option 1.

### Safety System Functional Failures (PWR)



Thresholds: White > 5.0

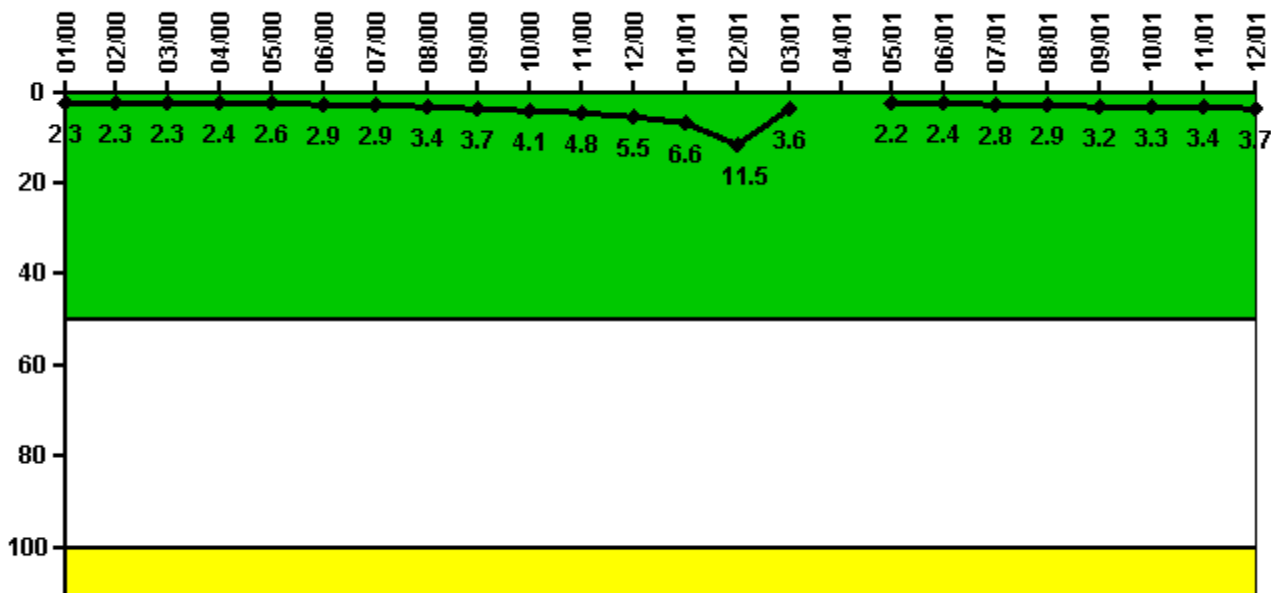
#### Notes

Safety System Functional Failures (PWR)	1Q/00	2Q/00	3Q/00	4Q/00	1Q/01	2Q/01	3Q/01	4Q/01
Safety System Functional Failures	0	0	0	0	0	0	0	0
Indicator value	1	1	1	0	0	0	0	0

Licensee Comments: none



### Reactor Coolant System Activity



Thresholds: White > 50.0 Yellow > 100.0

### Notes

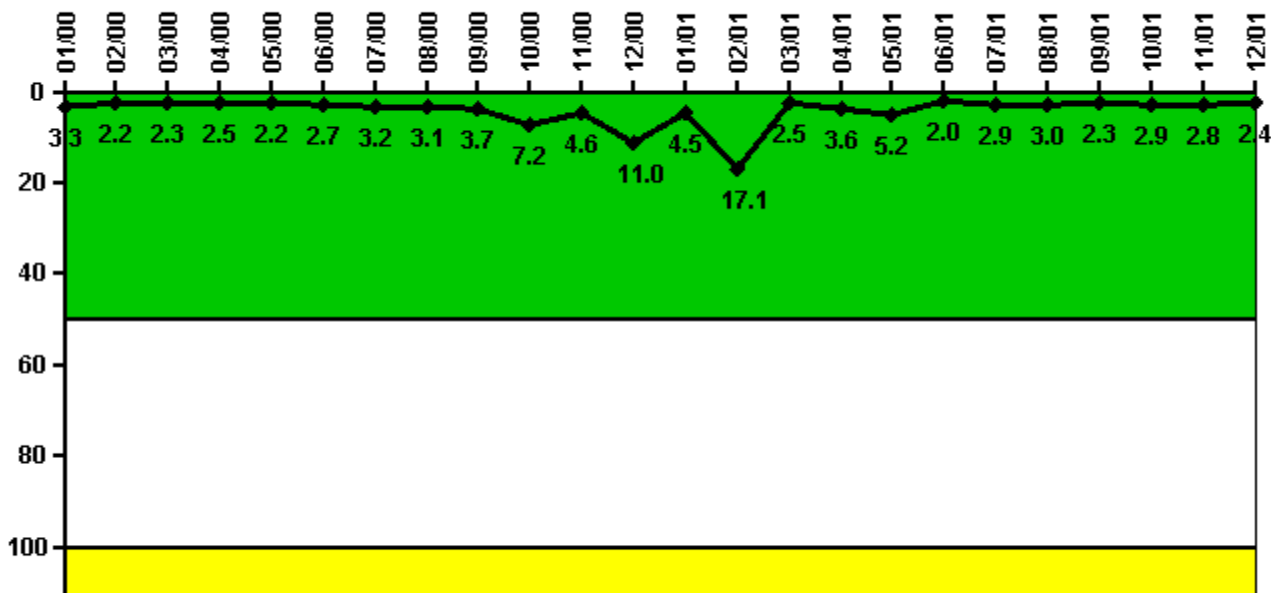
Reactor Coolant System Activity	1/00	2/00	3/00	4/00	5/00	6/00	7/00	8/00	9/00	10/00	11/00	12/00
Maximum activity	0.022800	0.022800	0.022900	0.024100	0.025700	0.028500	0.029200	0.033600	0.037100	0.040900	0.047600	0.055400
Technical specification limit	1.0	1.0	1.0	1.0	1.0	1.0	1.0	1.0	1.0	1.0	1.0	1.0
Indicator value	2.3	2.3	2.3	2.4	2.6	2.9	2.9	3.4	3.7	4.1	4.8	5.5

Reactor Coolant System Activity	1/01	2/01	3/01	4/01	5/01	6/01	7/01	8/01	9/01	10/01	11/01	12/01
Maximum activity	0.065800	0.115000	0.036100	N/A	0.022200	0.024200	0.027900	0.029100	0.032400	0.032700	0.034100	0.037200
Technical specification limit	1.0	1.0	1.0	1.0	1.0	1.0	1.0	1.0	1.0	1.0	1.0	1.0
Indicator value	6.6	11.5	3.6	N/A	2.2	2.4	2.8	2.9	3.2	3.3	3.4	3.7

Licensee Comments: none

### Reactor Coolant System Leakage



Thresholds: White > 50.0 Yellow > 100.0

#### Notes

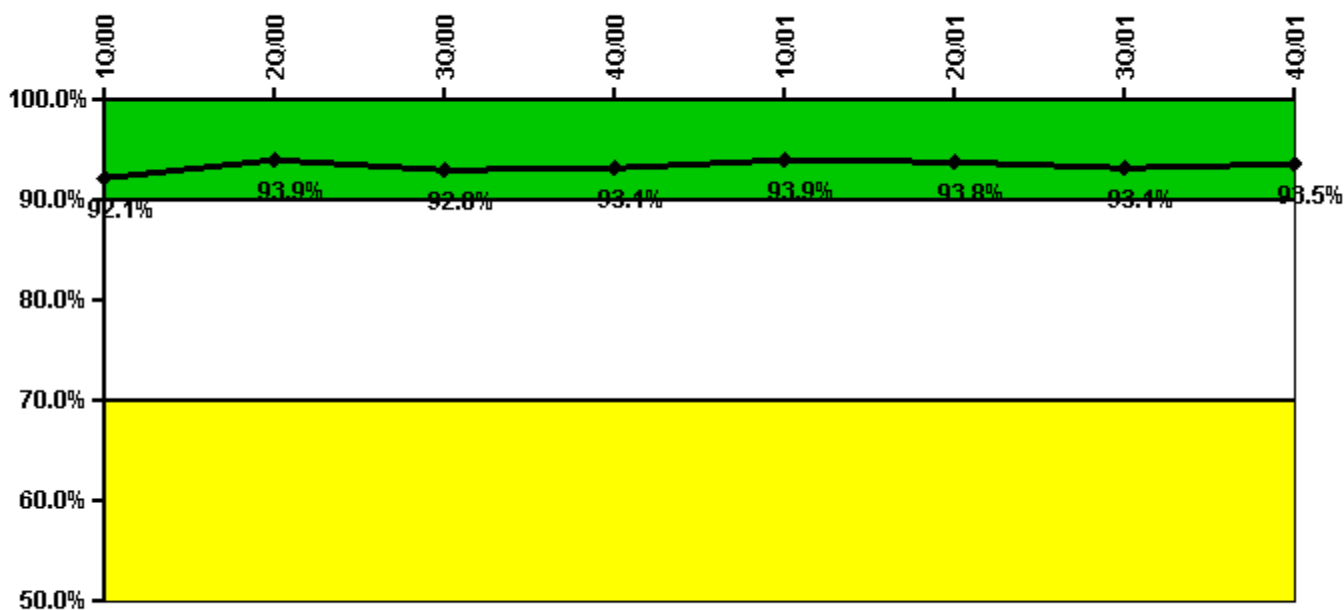
Reactor Coolant System Leakage	1/00	2/00	3/00	4/00	5/00	6/00	7/00	8/00	9/00	10/00	11/00	12/00
Maximum leakage	0.330	0.220	0.230	0.250	0.220	0.273	0.322	0.310	0.370	0.720	0.460	1.100
Technical specification limit	10.0	10.0	10.0	10.0	10.0	10.0	10.0	10.0	10.0	10.0	10.0	10.0
Indicator value	3.3	2.2	2.3	2.5	2.2	2.7	3.2	3.1	3.7	7.2	4.6	11.0

Reactor Coolant System Leakage	1/01	2/01	3/01	4/01	5/01	6/01	7/01	8/01	9/01	10/01	11/01	12/01
Maximum leakage	0.445	1.710	0.250	0.360	0.522	0.198	0.293	0.297	0.226	0.290	0.275	0.239
Technical specification limit	10.0	10.0	10.0	10.0	10.0	10.0	10.0	10.0	10.0	10.0	10.0	10.0
Indicator value	4.5	17.1	2.5	3.6	5.2	2.0	2.9	3.0	2.3	2.9	2.8	2.4

Licensee Comments: none

### Drill/Exercise Performance



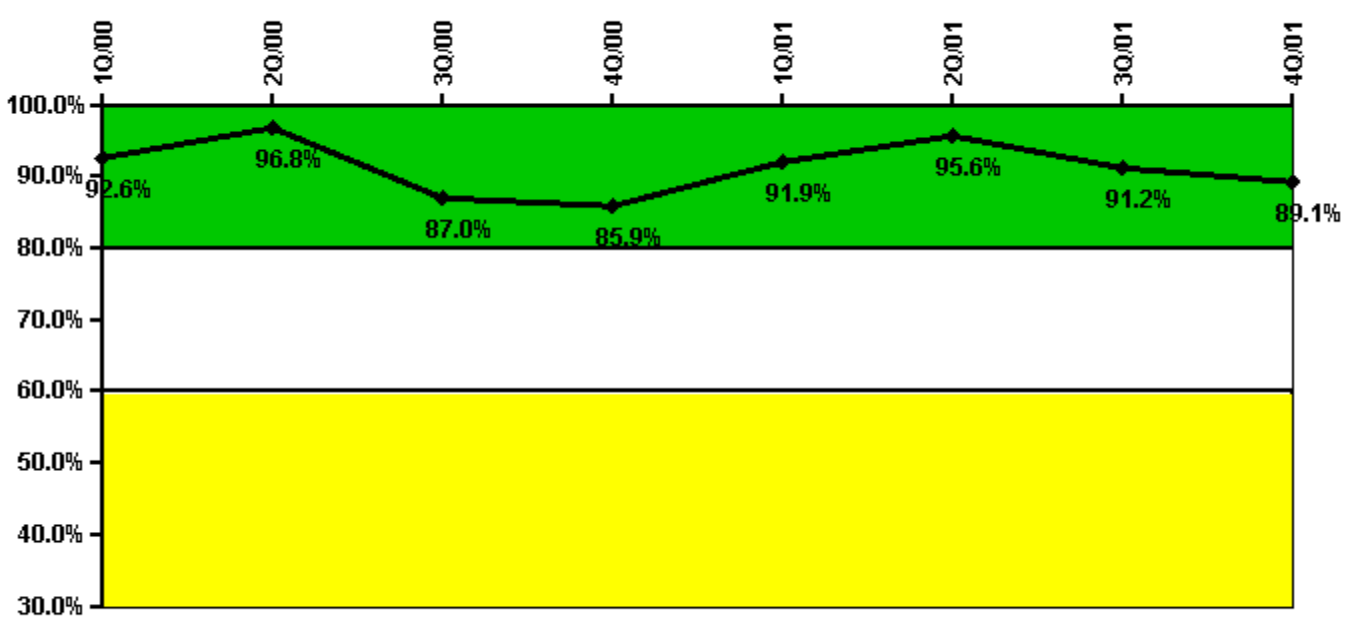
Thresholds: White < 90.0% Yellow < 70.0%

### Notes

Drill/Exercise Performance	1Q/00	2Q/00	3Q/00	4Q/00	1Q/01	2Q/01	3Q/01	4Q/01
Successful opportunities	13.0	44.0	12.0	14.0	8.0	6.0	11.0	21.0
Total opportunities	13.0	45.0	16.0	14.0	8.0	8.0	12.0	22.0
Indicator value	92.1%	93.9%	92.8%	93.1%	93.9%	93.8%	93.1%	93.5%

Licensee Comments: none

### ERO Drill Participation



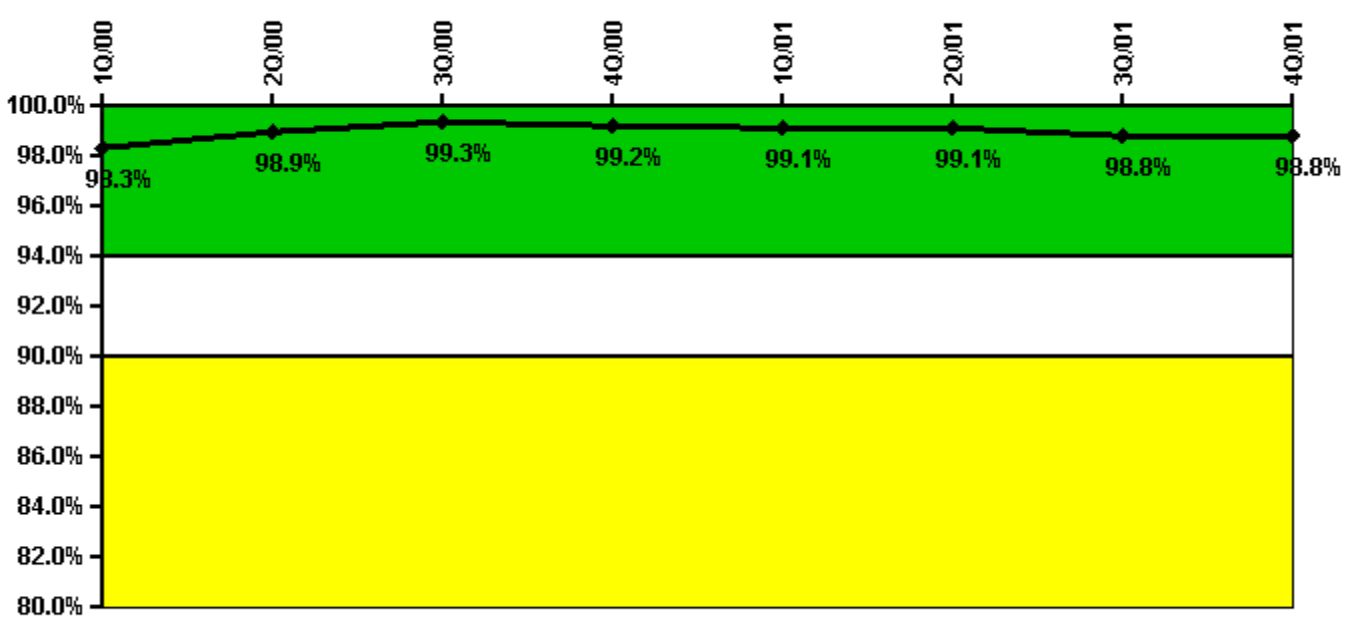
Thresholds: White < 80.0% Yellow < 60.0%

#### Notes

ERO Drill Participation	1Q/00	2Q/00	3Q/00	4Q/00	1Q/01	2Q/01	3Q/01	4Q/01
Participating Key personnel	87.0	92.0	80.0	79.0	91.0	86.0	103.0	106.0
Total Key personnel	94.0	95.0	92.0	92.0	99.0	90.0	113.0	119.0
Indicator value	92.6%	96.8%	87.0%	85.9%	91.9%	95.6%	91.2%	89.1%

Licensee Comments: none

### Alert & Notification System



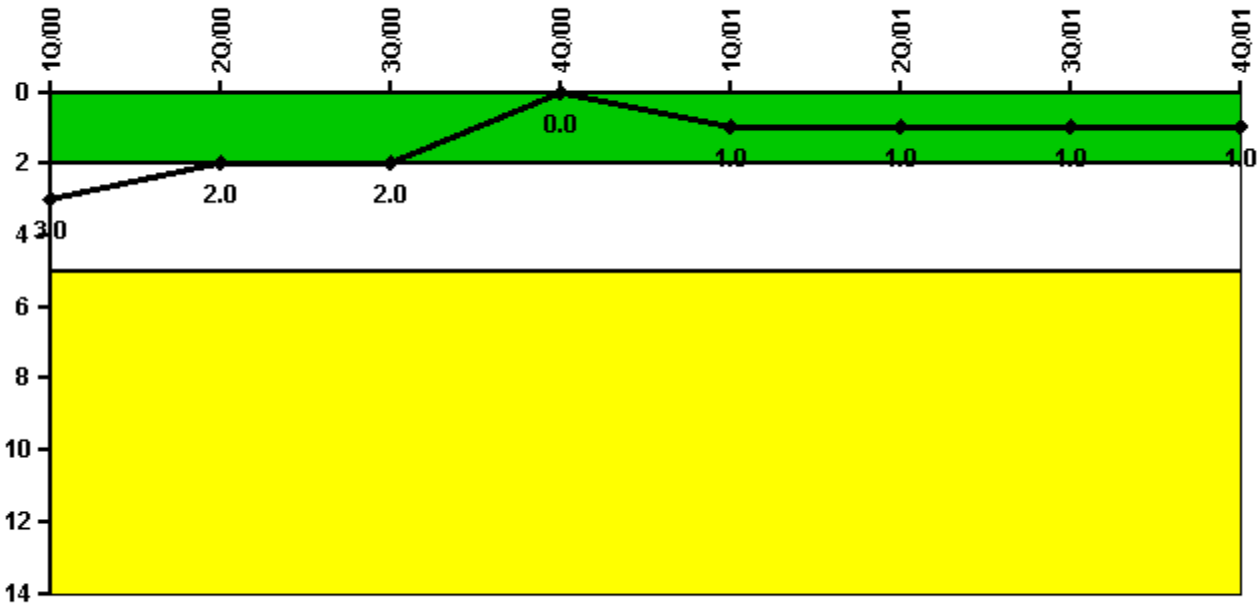
Thresholds: White < 94.0% Yellow < 90.0%

#### Notes

Alert & Notification System	1Q/00	2Q/00	3Q/00	4Q/00	1Q/01	2Q/01	3Q/01	4Q/01
Successful siren-tests	602	805	799	801	699	803	789	803
Total sirens-tests	606	808	808	808	707	808	808	808
Indicator value	98.3%	98.9%	99.3%	99.2%	99.1%	99.1%	98.8%	98.8%

Licensee Comments: none

### Occupational Exposure Control Effectiveness



Thresholds: White > 2.0 Yellow > 5.0

#### Notes

Occupational Exposure Control Effectiveness	1Q/00	2Q/00	3Q/00	4Q/00	1Q/01	2Q/01	3Q/01	4Q/01
High radiation area occurrences	0	0	0	0	0	0	0	0
Very high radiation area occurrences	0	0	0	0	0	0	0	0
Unintended exposure occurrences	0	0	0	0	1	0	0	0
<b>Indicator value</b>	<b>3</b>	<b>2</b>	<b>2</b>	<b>0</b>	<b>1</b>	<b>1</b>	<b>1</b>	<b>1</b>

Licensee Comments: none

### RETS/ODCM Radiological Effluent



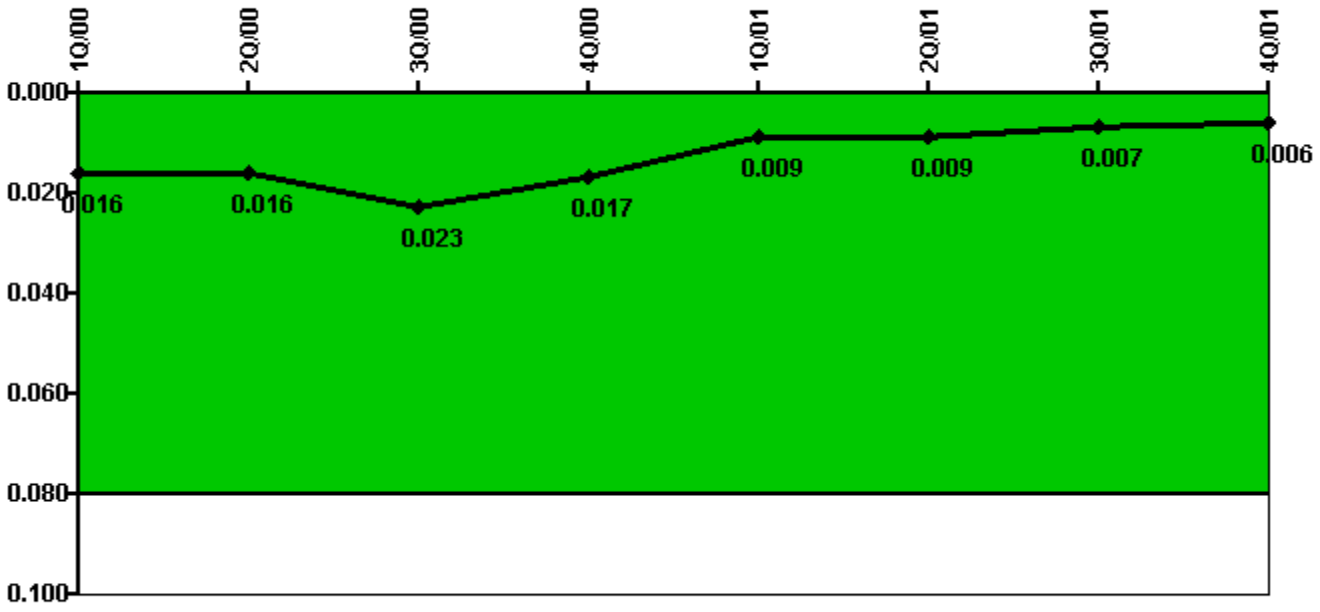
Thresholds: White > 1.0 Yellow > 3.0

#### Notes

RETS/ODCM Radiological Effluent	1Q/00	2Q/00	3Q/00	4Q/00	1Q/01	2Q/01	3Q/01	4Q/01
RETS/ODCM occurrences	0	0	0	0	0	0	0	0
Indicator value	0	0	0	0	0	0	0	0

Licensee Comments: none

### Protected Area Security Performance Index



Thresholds: White > 0.080

#### Notes

Protected Area Security Performance Index	1Q/00	2Q/00	3Q/00	4Q/00	1Q/01	2Q/01	3Q/01	4Q/01
IDS compensatory hours	222.10	16.60	117.40	64.30	28.10	10.30	38.20	32.60
CCTV compensatory hours	0	0	0	0	0	1.2	20.9	0
IDS normalization factor	1.45	1.45	1.00	1.45	1.45	1.45	1.45	1.45
CCTV normalization factor	1.0	1.0	1.5	1.0	1.0	1.0	1.0	1.0
<b>Index Value</b>	<b>0.016</b>	<b>0.016</b>	<b>0.023</b>	<b>0.017</b>	<b>0.009</b>	<b>0.009</b>	<b>0.007</b>	<b>0.006</b>

Licensee Comments: none



### Personnel Screening Program



Thresholds: White > 2.0 Yellow > 5.0

#### Notes

Personnel Screening Program	1Q/00	2Q/00	3Q/00	4Q/00	1Q/01	2Q/01	3Q/01	4Q/01
Program failures	0	0	0	0	0	0	0	0
Indicator value	0	0	0	0	0	0	0	0

Licensee Comments: none

### FFD/Personnel Reliability



Thresholds: White > 2.0 Yellow > 5.0

### Notes

FFD/Personnel Reliability	1Q/00	2Q/00	3Q/00	4Q/00	1Q/01	2Q/01	3Q/01	4Q/01
Program Failures	0	0	0	0	0	0	0	0
Indicator value	0	0	0	0	0	0	0	0

Licensee Comments: none

▲ [PI Summary](#) | [Inspection Findings Summary](#) | [Action Matrix Summary](#) | [Reactor Oversight Process](#)

Last Modified: March 15, 2002