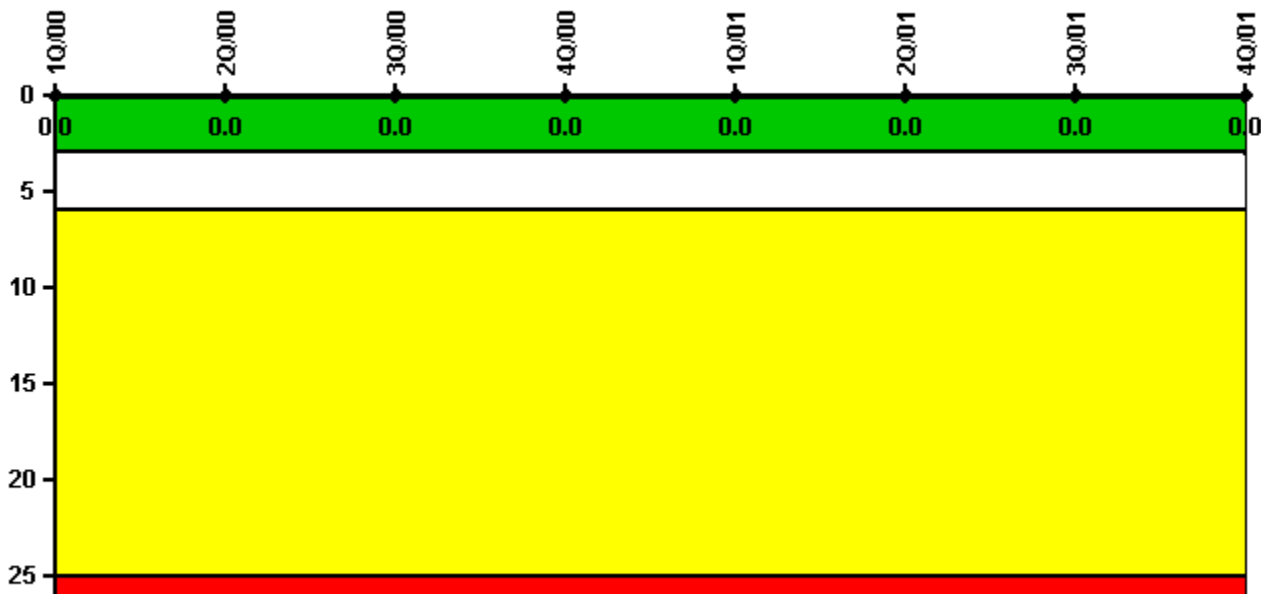


### Calvert Cliffs 2

#### 4Q/2001 Performance Indicators

Licensee's General Comments: none

#### Unplanned Scrams per 7000 Critical Hrs



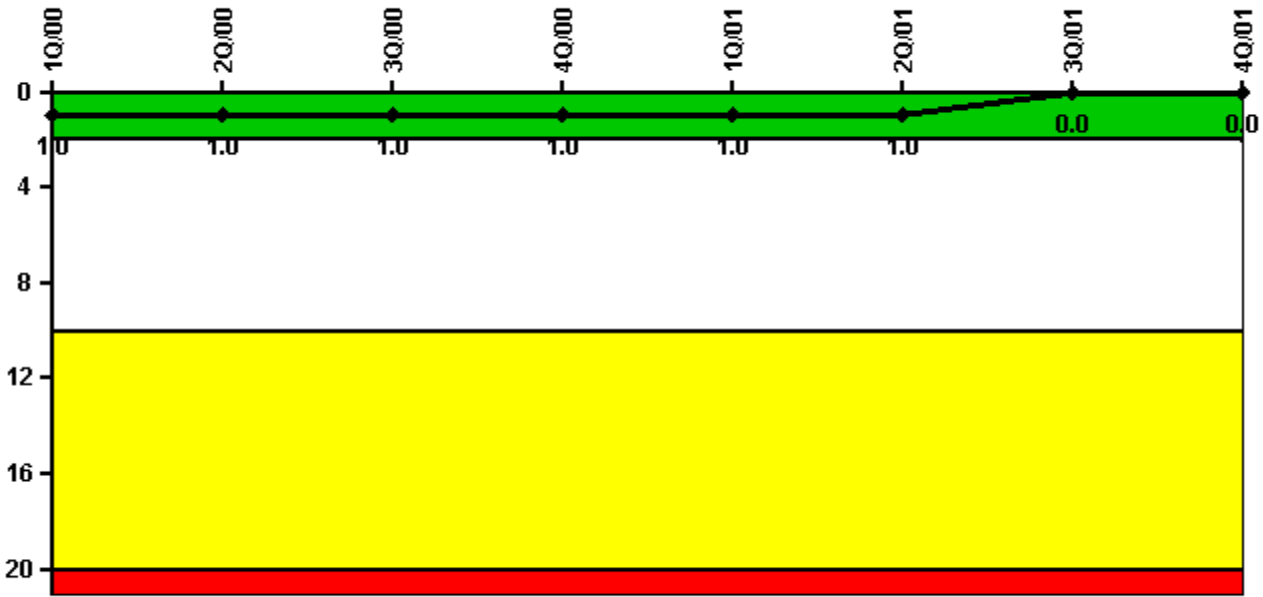
Thresholds: White > 3.0 Yellow > 6.0 Red > 25.0

#### Notes

Unplanned Scrams per 7000 Critical Hrs	1Q/00	2Q/00	3Q/00	4Q/00	1Q/01	2Q/01	3Q/01	4Q/01
Unplanned scrams	0	0	0	0	0	0	0	0
Critical hours	2019.8	2183.0	2208.0	2209.0	1800.0	1163.4	2208.0	2162.9
Indicator value	0	0	0	0	0	0	0	0

Licensee Comments: none

### Scrams with Loss of Normal Heat Removal



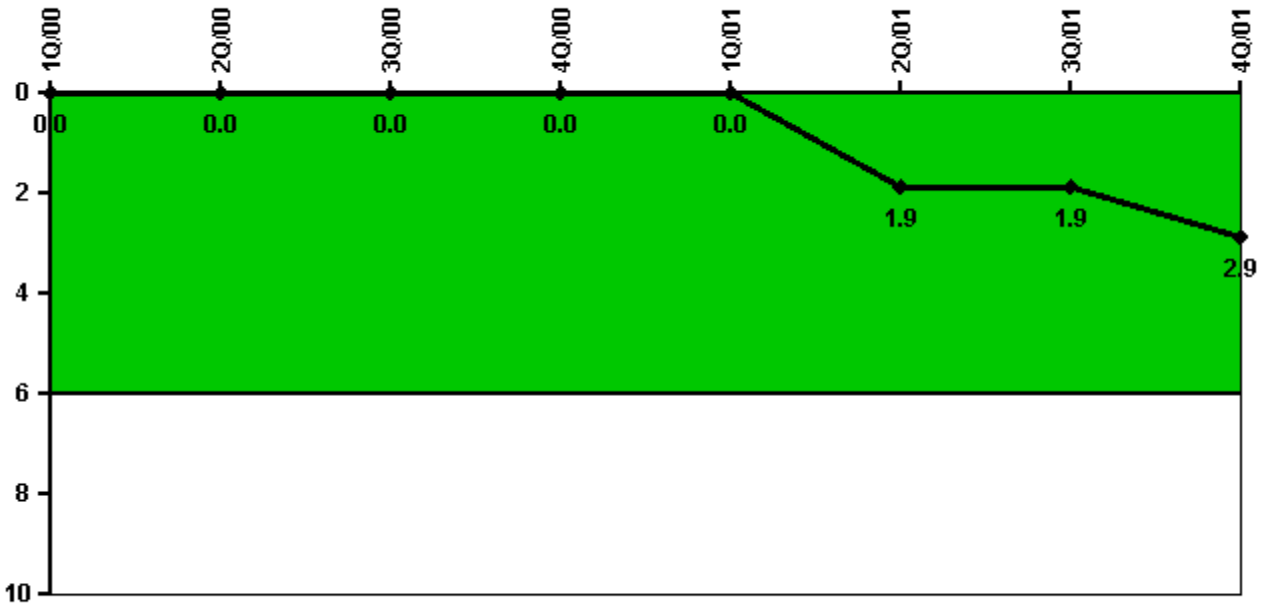
Thresholds: White > 2.0 Yellow > 10.0 Red > 20.0

#### Notes

Scrams with Loss of Normal Heat Removal	1Q/00	2Q/00	3Q/00	4Q/00	1Q/01	2Q/01	3Q/01	4Q/01
Scrams	0	0	0	0	0	0	0	0
Indicator value	1.0	1.0	1.0	1.0	1.0	1.0	0	0

Licensee Comments: none

### Unplanned Power Changes per 7000 Critical Hrs



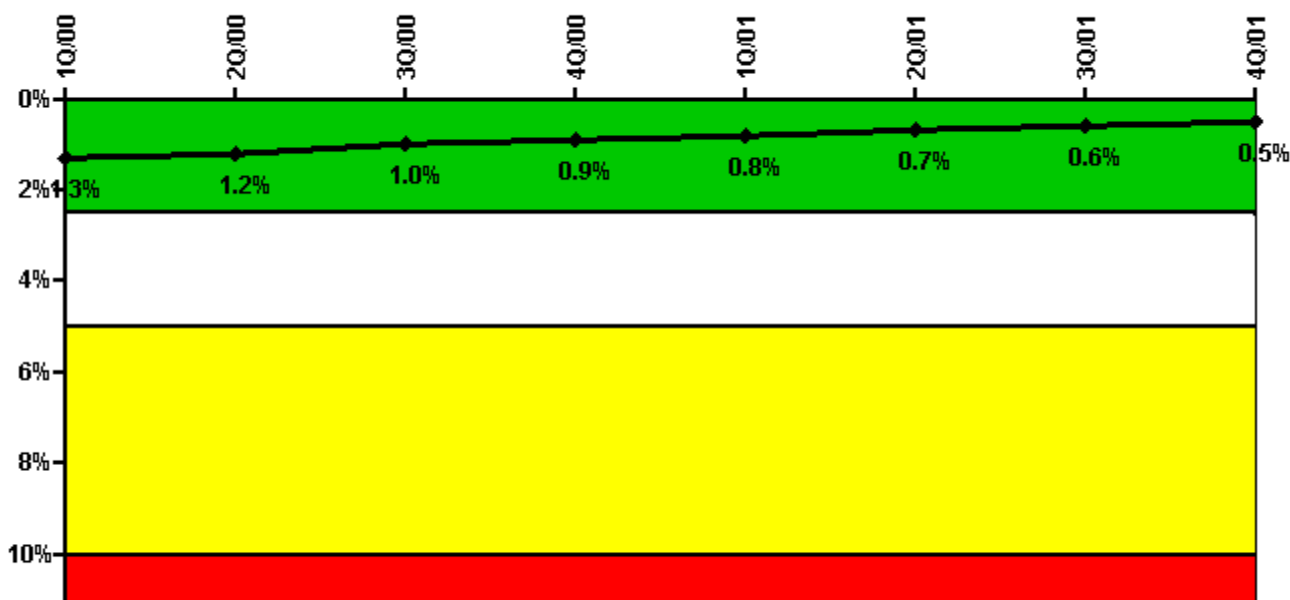
Thresholds: White > 6.0

#### Notes

Unplanned Power Changes per 7000 Critical Hrs	1Q/00	2Q/00	3Q/00	4Q/00	1Q/01	2Q/01	3Q/01	4Q/01
Unplanned power changes	0	0	0	0	0	2.0	0	1.0
Critical hours	2019.8	2183.0	2208.0	2209.0	1800.0	1163.4	2208.0	2162.9
Indicator value	0	0	0	0	0	1.9	1.9	2.9

Licensee Comments: none

### Safety System Unavailability, Emergency AC Power



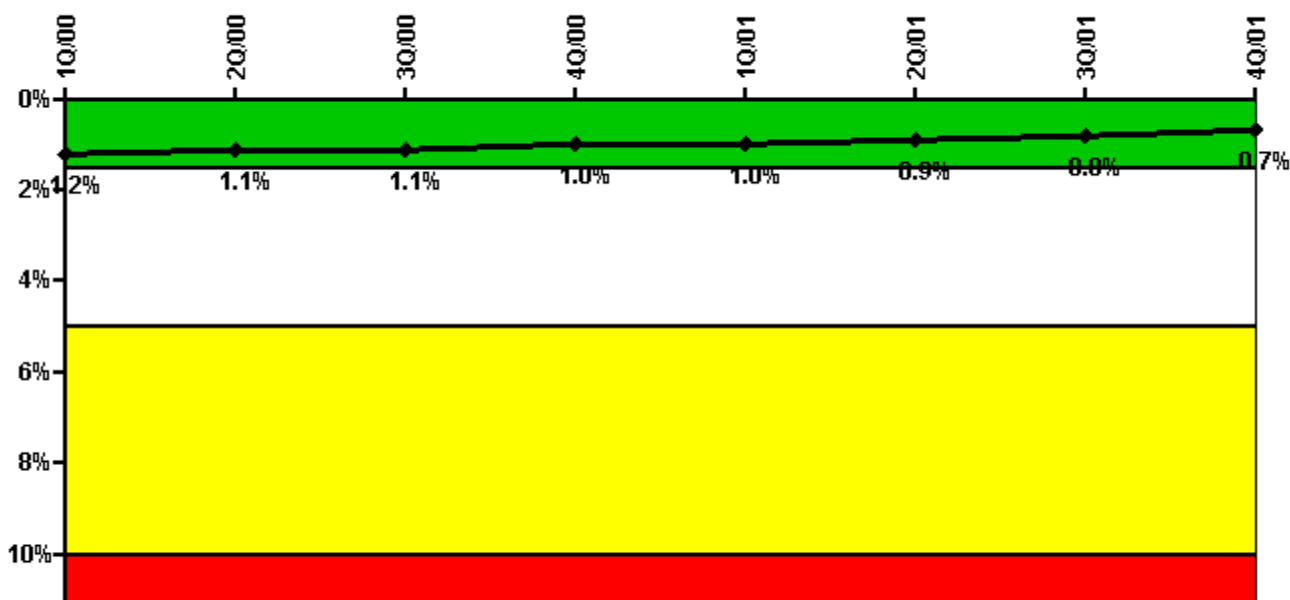
Thresholds: White > 2.5% Yellow > 5.0% Red > 10.0%

#### Notes

Safety System Unavailability, Emergency AC Power	1Q/00	2Q/00	3Q/00	4Q/00	1Q/01	2Q/01	3Q/01	4Q/01
<b>Train 1</b>								
Planned unavailable hours	31.00	0	0	0	15.33	0.83	34.50	0.50
Unplanned unavailable hours	0	0	0	0	0	0	17.27	9.27
Fault exposure hours	0	0	0	0	0	0	0	0
Effective Reset hours	0	0	0	0	0	0	0	0
Required hours	2184.00	2183.00	2208.00	2209.00	2160.00	2183.00	2208.00	2209.00
<b>Train 2</b>								
Planned unavailable hours	13.38	0	0	0.50	37.40	0	0	0.25
Unplanned unavailable hours	0	0	0	0	0.25	0	0	0
Fault exposure hours	0	0	0	0	0	0	0	0
Effective Reset hours	0	0	0	0	0	0	0	0
Required hours	2184.00	2183.00	2208.00	2209.00	2160.00	2183.00	2208.00	2209.00
<b>Indicator value</b>	<b>1.3%</b>	<b>1.2%</b>	<b>1.0%</b>	<b>0.9%</b>	<b>0.8%</b>	<b>0.7%</b>	<b>0.6%</b>	<b>0.5%</b>

Licensee Comments: none

### Safety System Unavailability, High Pressure Injection System (HPSI)



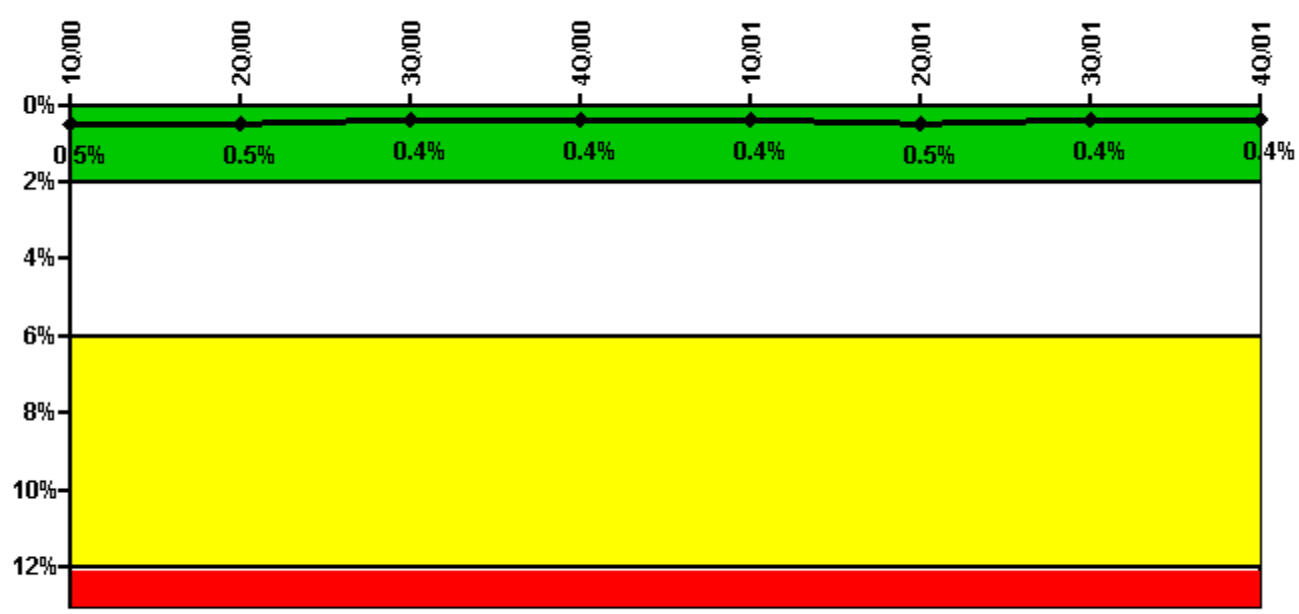
Thresholds: White > 1.5% Yellow > 5.0% Red > 10.0%

#### Notes

Safety System Unavailability, High Pressure Injection System (HPSI)	1Q/00	2Q/00	3Q/00	4Q/00	1Q/01	2Q/01	3Q/01	4Q/01
<b>Train 1</b>								
Planned unavailable hours	17.50	0.54	1.35	15.63	36.34	1.54	0.27	9.94
Unplanned unavailable hours	0	0	0	7.33	0	0	0	9.27
Fault exposure hours	0	0	0	0	0	0	0	0
Effective Reset hours	0	0	0	0	0	0	0	0
Required hours	2019.80	2183.00	2208.00	2209.00	1800.00	1163.30	2208.00	2162.90
<b>Train 2</b>								
Planned unavailable hours	12.84	0.62	26.17	1.13	19.27	1.54	17.47	0.54
Unplanned unavailable hours	0	0	0	0	0	0	0	0.47
Fault exposure hours	0	0	0	0	0	0	0	0
Effective Reset hours	0	0	0	0	0	0	0	0
Required hours	2019.80	2183.00	2208.00	2209.00	1800.00	1163.30	2208.00	2162.90
<b>Indicator value</b>	<b>1.2%</b>	<b>1.1%</b>	<b>1.1%</b>	<b>1.0%</b>	<b>1.0%</b>	<b>0.9%</b>	<b>0.8%</b>	<b>0.7%</b>

Licensee Comments: none

### Safety System Unavailability, Heat Removal System (AFW)



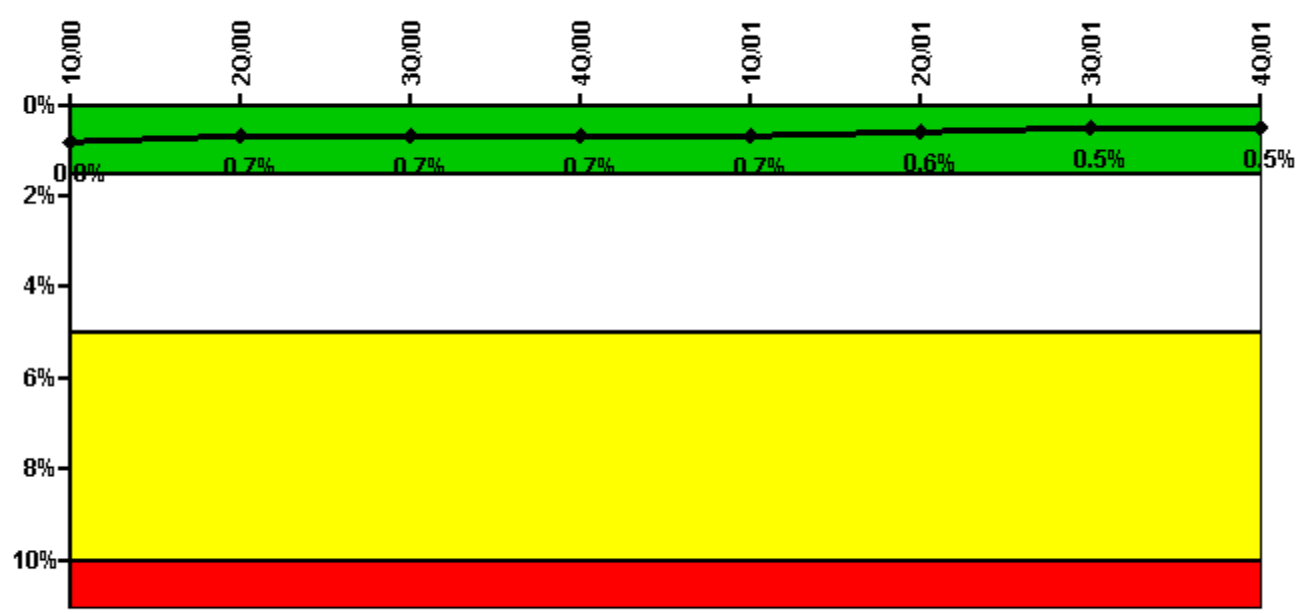
Thresholds: White > 2.0% Yellow > 6.0% Red > 12.0%

#### Notes

Safety System Unavailability, Heat Removal System (AFW)	1Q/00	2Q/00	3Q/00	4Q/00	1Q/01	2Q/01	3Q/01	4Q/01
<b>Train 1</b>								
Planned unavailable hours	1.00	1.00	1.00	2.75	2.33	18.04	8.91	0.08
Unplanned unavailable hours	5.12	0	0	0	0	0	6.58	0
Fault exposure hours	0	0	0	0	0	0	0	0
Effective Reset hours	0	0	0	0	0	0	0	0
Required hours	2019.80	2183.00	2208.00	2209.00	1800.00	1163.30	2208.00	2162.90
<b>Train 2</b>								
Planned unavailable hours	1.00	1.00	1.00	2.75	2.33	22.28	13.67	0.17
Unplanned unavailable hours	5.12	0	0	0	0	0	6.58	0
Fault exposure hours	0	0	0	0	0	0	0	0
Effective Reset hours	0	0	0	0	0	0	0	0
Required hours	2019.80	2183.00	2208.00	2209.00	1800.00	1163.30	2208.00	2162.90
<b>Train 3</b>								
Planned unavailable hours	0	1.50	5.23	3.83	0	31.95	38.92	13.07
Unplanned unavailable hours	0	0	0	0	0	0	0.58	0
Fault exposure hours	0	0	0	0	0	0	0	0
Effective Reset hours	0	0	0	0	0	0	0	0
Required hours	2019.80	2183.00	2208.00	2209.00	1800.00	1163.30	2208.00	2162.90
<b>Indicator value</b>	<b>0.5%</b>	<b>0.5%</b>	<b>0.4%</b>	<b>0.4%</b>	<b>0.4%</b>	<b>0.5%</b>	<b>0.4%</b>	<b>0.4%</b>

Licensee Comments: none

### Safety System Unavailability, Residual Heat Removal System



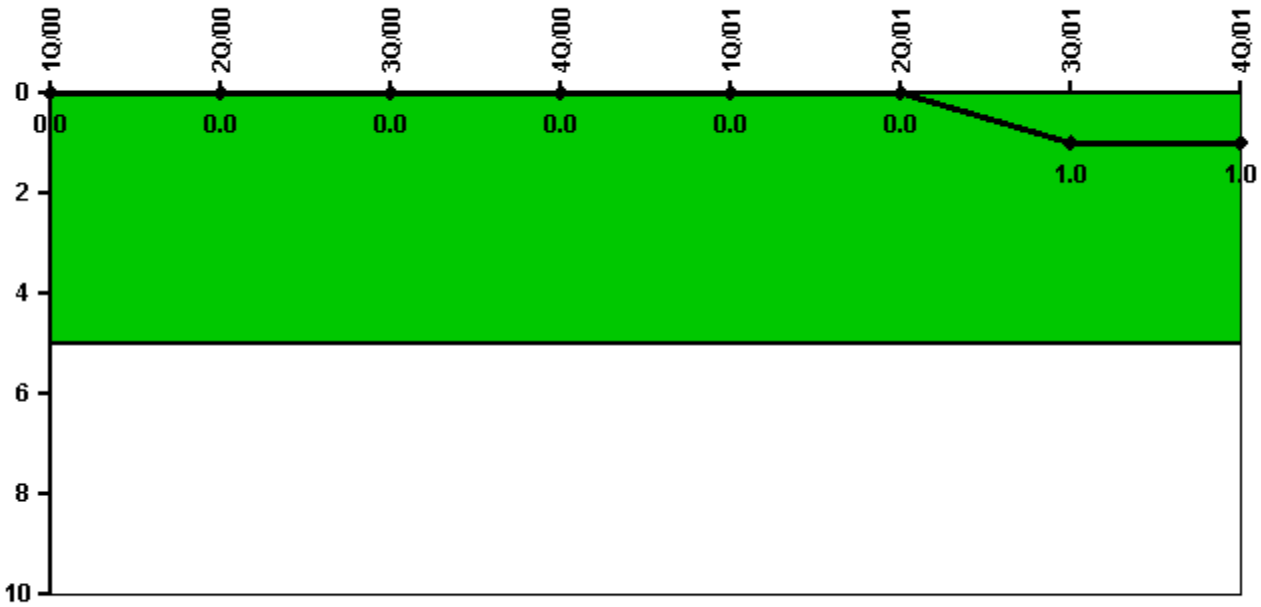
Thresholds: White > 1.5% Yellow > 5.0% Red > 10.0%

Notes

Safety System Unavailability, Residual Heat Removal System	1Q/00	2Q/00	3Q/00	4Q/00	1Q/01	2Q/01	3Q/01	4Q/01
<b>Train 1</b>								
Planned unavailable hours	0	0	0	0	0	0	0	0
Unplanned unavailable hours	0	0	0	0	0	0	0	0
Fault exposure hours	0	0	0	0	0	0	0	0
Effective Reset hours	0	0	0	0	0	0	0	0
Required hours	109.90	0	0	0	336.80	935.40	0	19.30
<b>Train 2</b>								
Planned unavailable hours	0	0	0	0	0	0	0	0
Unplanned unavailable hours	0	0	0	0	0	0	0	0
Fault exposure hours	0	0	0	0	0	0	0	0
Effective Reset hours	0	0	0	0	0	0	0	0
Required hours	109.90	0	0	0	336.80	935.40	0	19.30
<b>Train 3</b>								
Planned unavailable hours	18.60	1.88	1.42	17.30	34.49	4.24	2.62	25.68
Unplanned unavailable hours	0	0	0	7.33	0	0	0	9.27
Fault exposure hours	0	0	0	0	0	0	0	0
Effective Reset hours	0	0	0	0	0	0	0	0
Required hours	2074.10	2183.00	2208.00	2209.00	1823.20	1247.60	2208.00	2189.70
<b>Train 4</b>								
Planned unavailable hours	15.10	1.36	26.41	2.23	28.40	4.52	22.54	1.91
Unplanned unavailable hours	0	0	0	0	0	0	0	0
Fault exposure hours	0	0	0	0	0	0	0	0
Effective Reset hours	0	0	0	0	0	0	0	0
Required hours	2074.10	2183.00	2208.00	2209.00	1823.20	1247.60	2208.00	2189.70
<b>Indicator value</b>	<b>0.8%</b>	<b>0.7%</b>	<b>0.7%</b>	<b>0.7%</b>	<b>0.7%</b>	<b>0.6%</b>	<b>0.5%</b>	<b>0.5%</b>

Licensee Comments: none

### Safety System Functional Failures (PWR)



Thresholds: White > 5.0

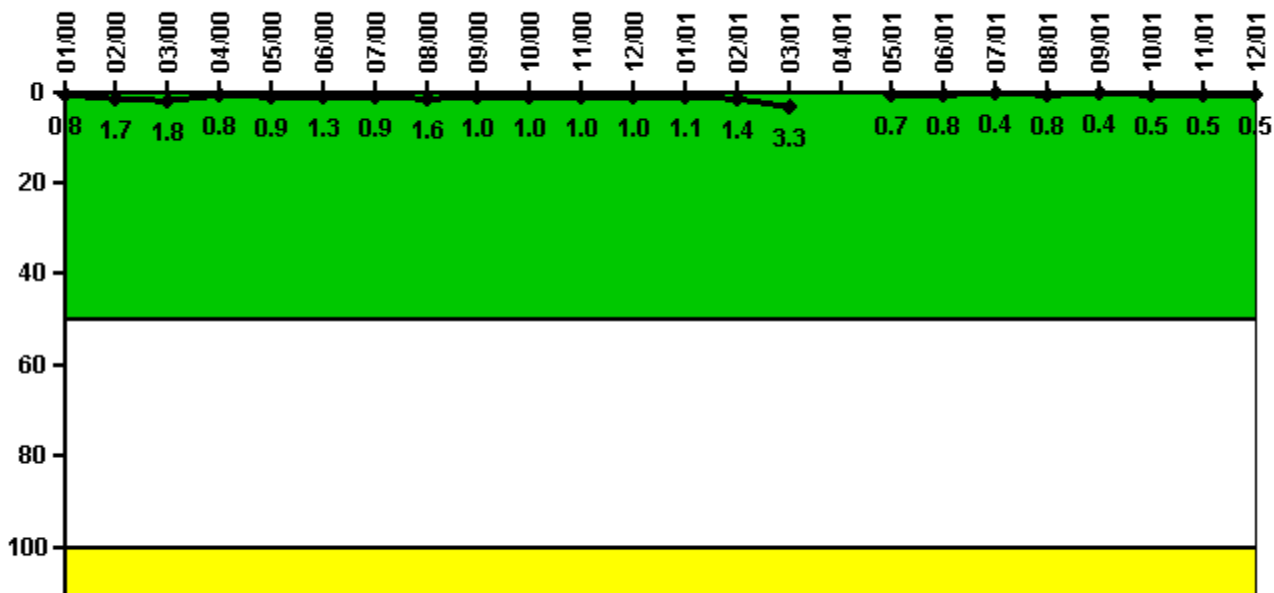
#### Notes

Safety System Functional Failures (PWR)	1Q/00	2Q/00	3Q/00	4Q/00	1Q/01	2Q/01	3Q/01	4Q/01
Safety System Functional Failures	0	0	0	0	0	0	1	0
Indicator value	0	0	0	0	0	0	1	1

Licensee Comments: none



### Reactor Coolant System Activity



Thresholds: White > 50.0 Yellow > 100.0

### Notes

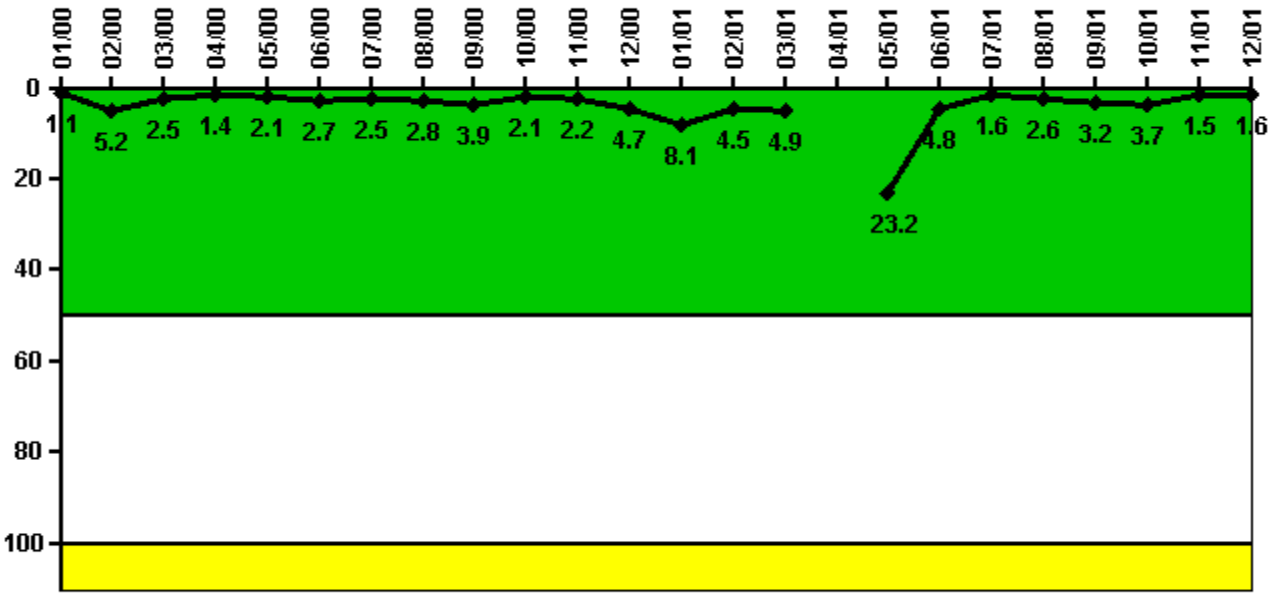
Reactor Coolant System Activity	1/00	2/00	3/00	4/00	5/00	6/00	7/00	8/00	9/00	10/00	11/00	12/00
Maximum activity	0.008020	0.017200	0.018400	0.008250	0.008750	0.012700	0.008910	0.016400	0.009940	0.009960	0.010200	0.010400
Technical specification limit	1.0	1.0	1.0	1.0	1.0	1.0	1.0	1.0	1.0	1.0	1.0	1.0
Indicator value	0.8	1.7	1.8	0.8	0.9	1.3	0.9	1.6	1.0	1.0	1.0	1.0

Reactor Coolant System Activity	1/01	2/01	3/01	4/01	5/01	6/01	7/01	8/01	9/01	10/01	11/01	12/01
Maximum activity	0.011200	0.013600	0.032800	N/A	0.007460	0.007800	0.003780	0.007770	0.004230	0.004620	0.004720	0.005170
Technical specification limit	1.0	1.0	1.0	1.0	1.0	1.0	1.0	1.0	1.0	1.0	1.0	1.0
Indicator value	1.1	1.4	3.3	N/A	0.7	0.8	0.4	0.8	0.4	0.5	0.5	0.5

Licensee Comments: none

### Reactor Coolant System Leakage



Thresholds: White > 50.0 Yellow > 100.0

#### Notes

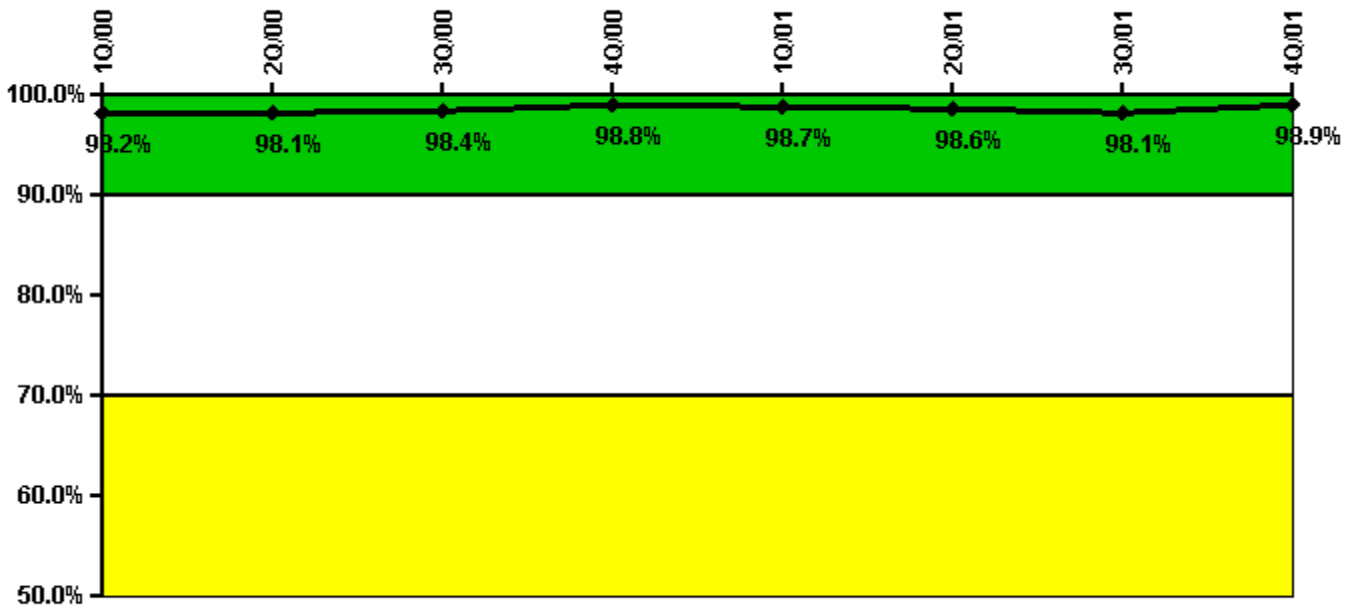
Reactor Coolant System Leakage	1/00	2/00	3/00	4/00	5/00	6/00	7/00	8/00	9/00	10/00	11/00	12/00
Maximum leakage	0.114	0.521	0.254	0.142	0.207	0.267	0.254	0.277	0.393	0.212	0.224	0.471
Technical specification limit	10.0	10.0	10.0	10.0	10.0	10.0	10.0	10.0	10.0	10.0	10.0	10.0
Indicator value	1.1	5.2	2.5	1.4	2.1	2.7	2.5	2.8	3.9	2.1	2.2	4.7

Reactor Coolant System Leakage	1/01	2/01	3/01	4/01	5/01	6/01	7/01	8/01	9/01	10/01	11/01	12/01
Maximum leakage	0.814	0.450	0.488	N/A	2.320	0.480	0.155	0.260	0.317	0.370	0.150	0.160
Technical specification limit	10.0	10.0	10.0	10.0	10.0	10.0	10.0	10.0	10.0	10.0	10.0	10.0
Indicator value	8.1	4.5	4.9	N/A	23.2	4.8	1.6	2.6	3.2	3.7	1.5	1.6

Licensee Comments: none

### Drill/Exercise Performance



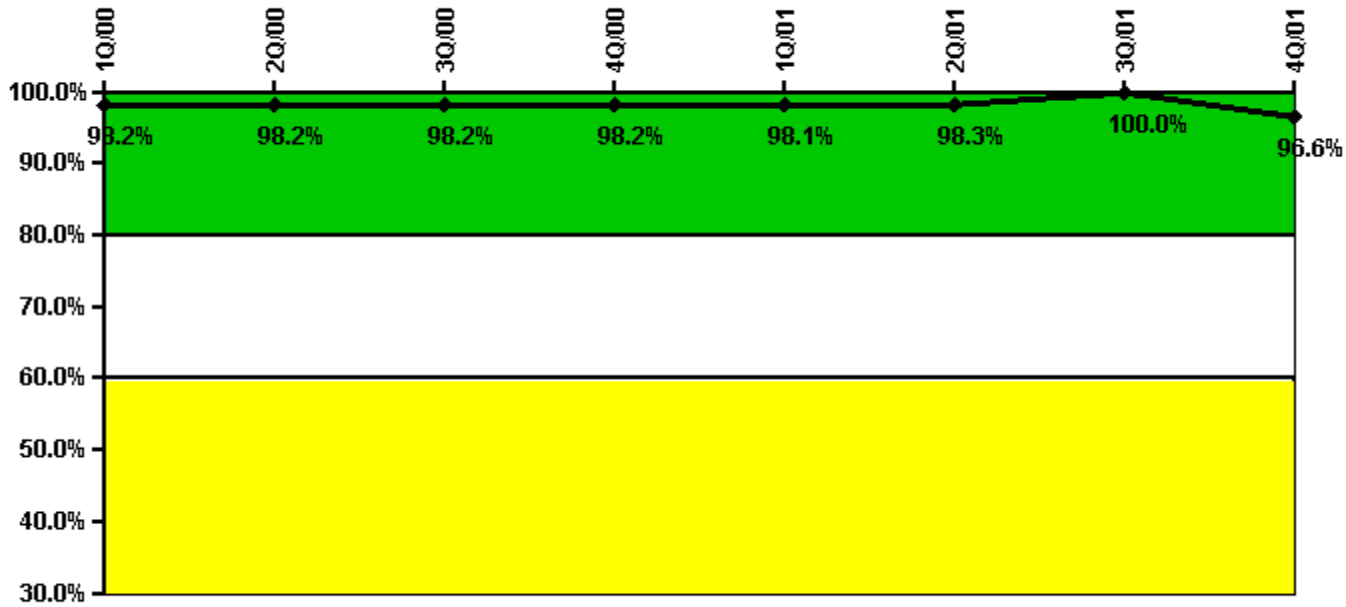
Thresholds: White < 90.0% Yellow < 70.0%

### Notes

Drill/Exercise Performance	1Q/00	2Q/00	3Q/00	4Q/00	1Q/01	2Q/01	3Q/01	4Q/01
Successful opportunities	10.0	19.0	32.0	33.0	11.0	22.0	27.0	25.0
Total opportunities	10.0	19.0	33.0	33.0	11.0	22.0	28.0	25.0
Indicator value	98.2%	98.1%	98.4%	98.8%	98.7%	98.6%	98.1%	98.9%

Licensee Comments: none

### ERO Drill Participation



Thresholds: White < 80.0% Yellow < 60.0%

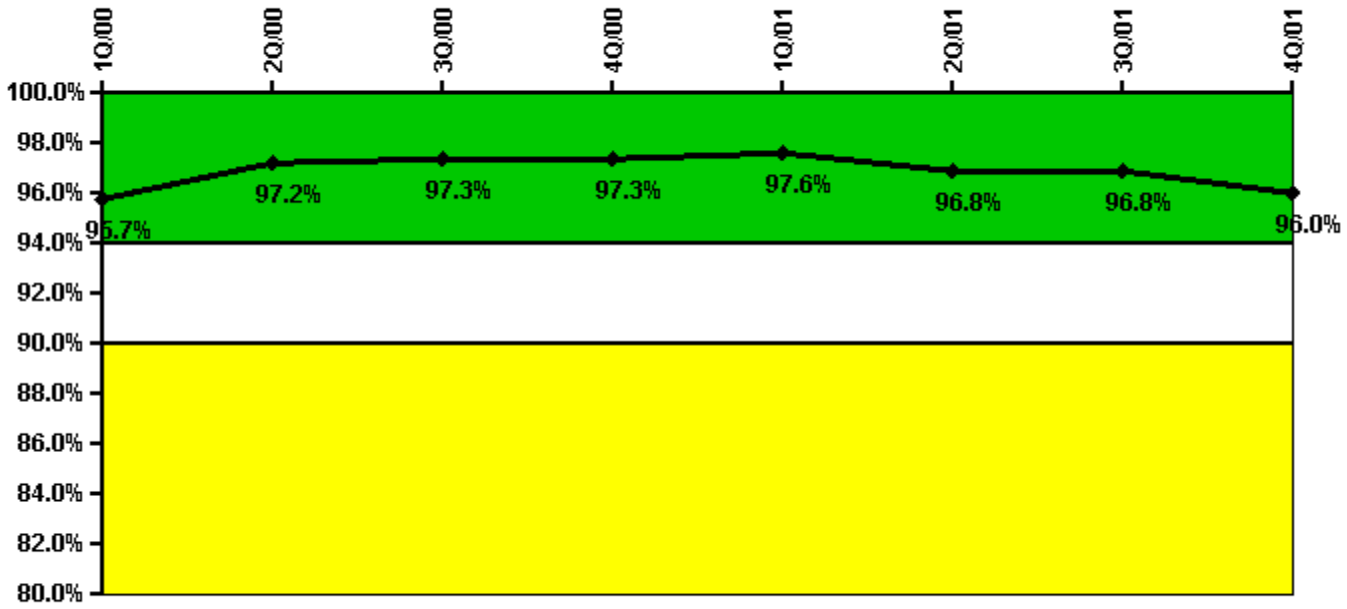
#### Notes

ERO Drill Participation	1Q/00	2Q/00	3Q/00	4Q/00	1Q/01	2Q/01	3Q/01	4Q/01
Participating Key personnel	56.0	56.0	55.0	54.0	53.0	59.0	57.0	57.0
Total Key personnel	57.0	57.0	56.0	55.0	54.0	60.0	57.0	59.0
Indicator value	98.2%	98.2%	98.2%	98.2%	98.1%	98.3%	100.0%	96.6%

#### Licensee Comments:

4Q/01: During review of the data for preparation of the fourth quarter 2001 performance indicator submittal, an error was discovered that affects the indicator values for the second and third quarter 2001. Thus, the indicator value for second and third quarter 2001 are different than previously reported. The error in the second quarter and third quarter 2001 data has been determined not to change the indicator color; the indicator values remain in the green band for this performance indicator. The fourth quarter indicator data includes the corrected second and third quarter 2001 data.

### Alert & Notification System



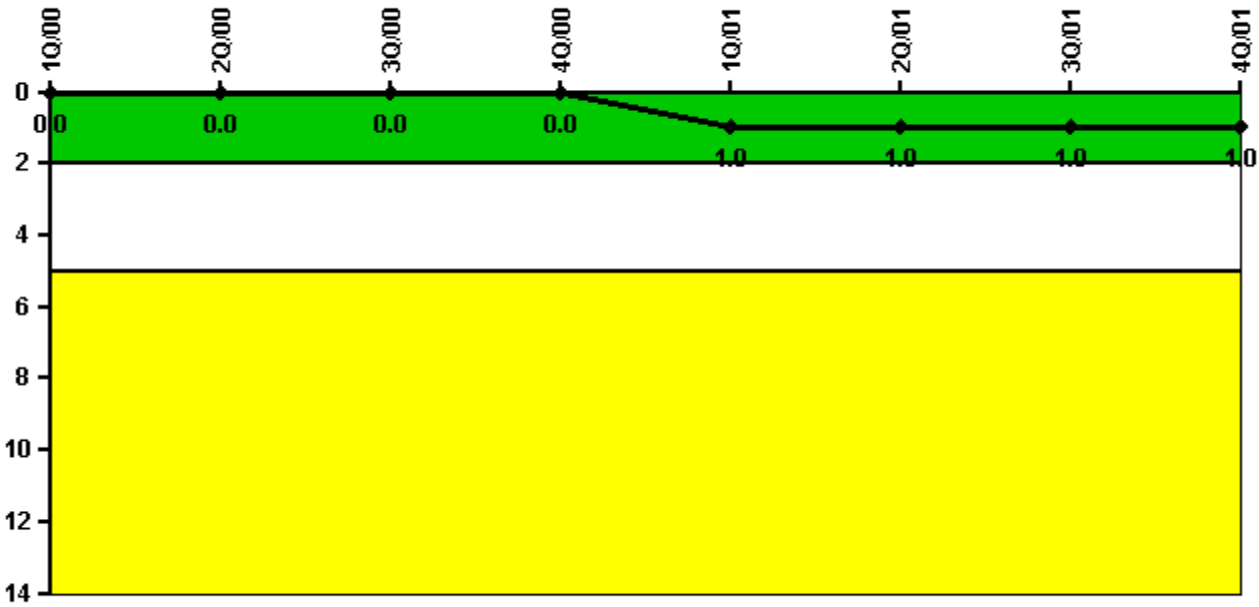
Thresholds: White < 94.0% Yellow < 90.0%

#### Notes

Alert & Notification System	1Q/00	2Q/00	3Q/00	4Q/00	1Q/01	2Q/01	3Q/01	4Q/01
Successful siren-tests	929	929	906	1039	990	944	969	1078
Total sirens-tests	950	955	936	1068	1002	1002	1002	1140
Indicator value	95.7%	97.2%	97.3%	97.3%	97.6%	96.8%	96.8%	96.0%

Licensee Comments: none

### Occupational Exposure Control Effectiveness



Thresholds: White > 2.0 Yellow > 5.0

#### Notes

Occupational Exposure Control Effectiveness	1Q/00	2Q/00	3Q/00	4Q/00	1Q/01	2Q/01	3Q/01	4Q/01
High radiation area occurrences	0	0	0	0	1	0	0	0
Very high radiation area occurrences	0	0	0	0	0	0	0	0
Unintended exposure occurrences	0	0	0	0	0	0	0	0
<b>Indicator value</b>	<b>0</b>	<b>0</b>	<b>0</b>	<b>0</b>	<b>1</b>	<b>1</b>	<b>1</b>	<b>1</b>

Licensee Comments: none

### RETS/ODCM Radiological Effluent



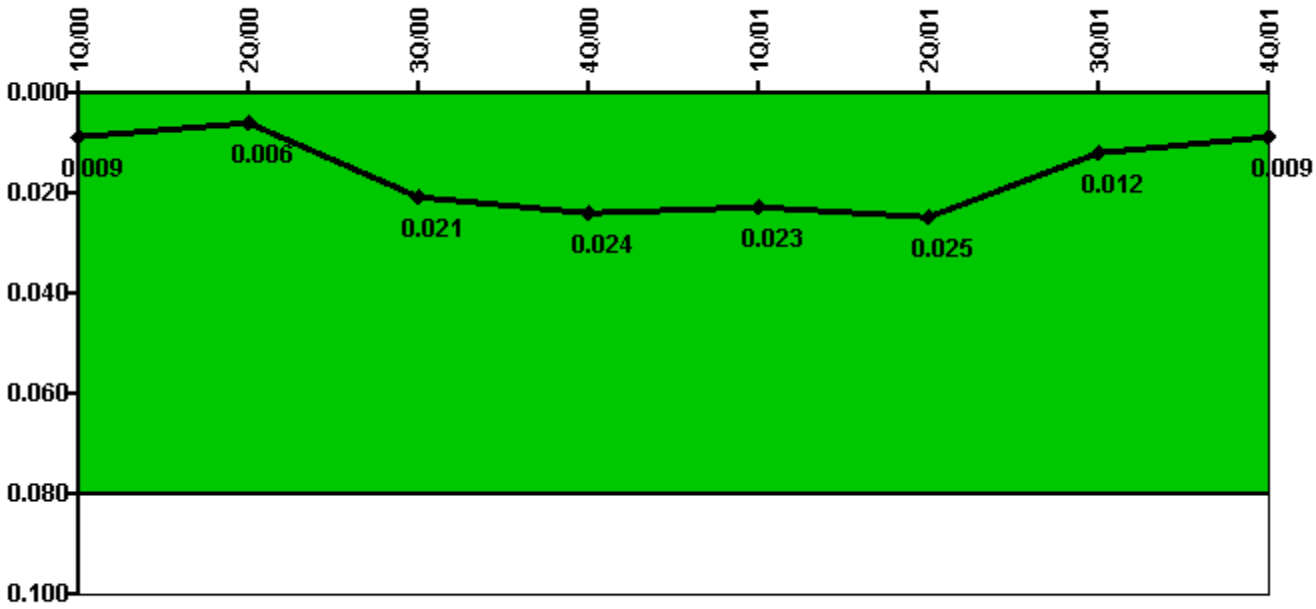
Thresholds: White > 1.0 Yellow > 3.0

#### Notes

RETS/ODCM Radiological Effluent	1Q/00	2Q/00	3Q/00	4Q/00	1Q/01	2Q/01	3Q/01	4Q/01
RETS/ODCM occurrences	0	0	0	0	0	0	0	0
Indicator value	0	0	0	0	0	0	0	0

Licensee Comments: none

### Protected Area Security Performance Index



Thresholds: White > 0.080

#### Notes

Protected Area Security Performance Index	1Q/00	2Q/00	3Q/00	4Q/00	1Q/01	2Q/01	3Q/01	4Q/01
IDS compensatory hours	46.00	38.60	390.70	116.70	14.80	85.60	69.60	39.90
CCTV compensatory hours	0	0	0	0	0	0	0	0
IDS normalization factor	1.40	1.40	1.40	1.40	1.40	1.40	1.40	1.40
CCTV normalization factor	1.2	1.2	1.2	1.2	1.2	1.2	1.2	1.2
<b>Index Value</b>	<b>0.009</b>	<b>0.006</b>	<b>0.021</b>	<b>0.024</b>	<b>0.023</b>	<b>0.025</b>	<b>0.012</b>	<b>0.009</b>

Licensee Comments: none



### Personnel Screening Program



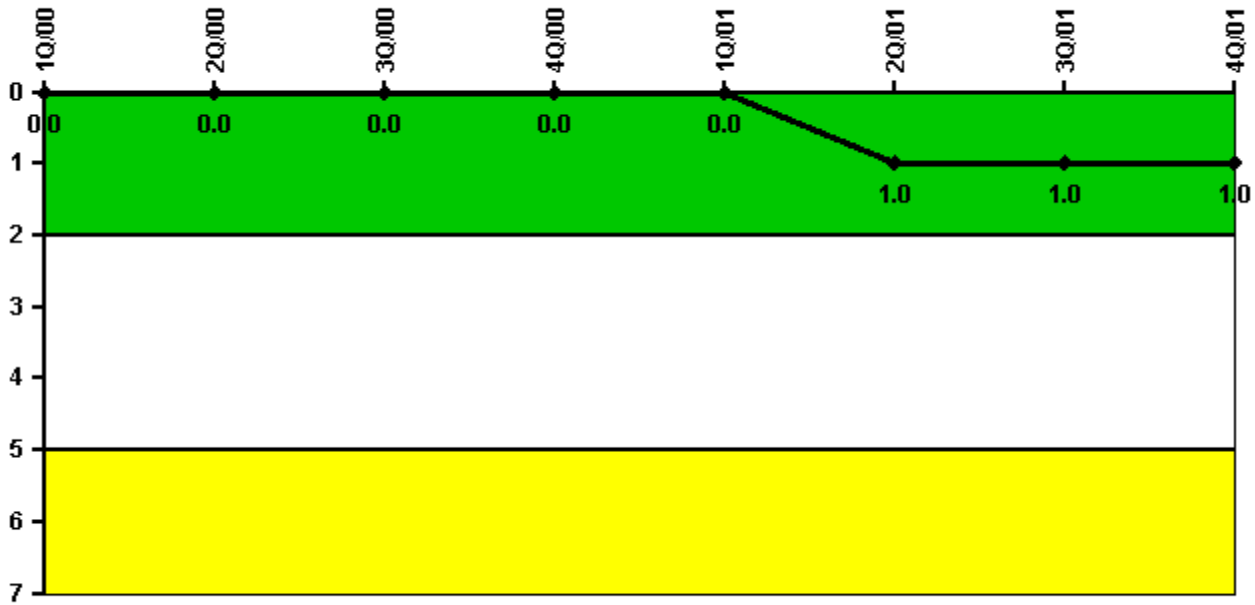
Thresholds: White > 2.0 Yellow > 5.0

#### Notes

Personnel Screening Program	1Q/00	2Q/00	3Q/00	4Q/00	1Q/01	2Q/01	3Q/01	4Q/01
Program failures	0	0	0	0	0	0	0	0
Indicator value	0	0	0	0	0	0	0	0

Licensee Comments: none

### FFD/Personnel Reliability



Thresholds: White > 2.0 Yellow > 5.0

### Notes

FFD/Personnel Reliability	1Q/00	2Q/00	3Q/00	4Q/00	1Q/01	2Q/01	3Q/01	4Q/01
Program Failures	0	0	0	0	0	1	0	0
Indicator value	0	0	0	0	0	1	1	1

Licensee Comments: none

▲ [PI Summary](#) | [Inspection Findings Summary](#) | [Action Matrix Summary](#) | [Reactor Oversight Process](#)

Last Modified: March 15, 2002