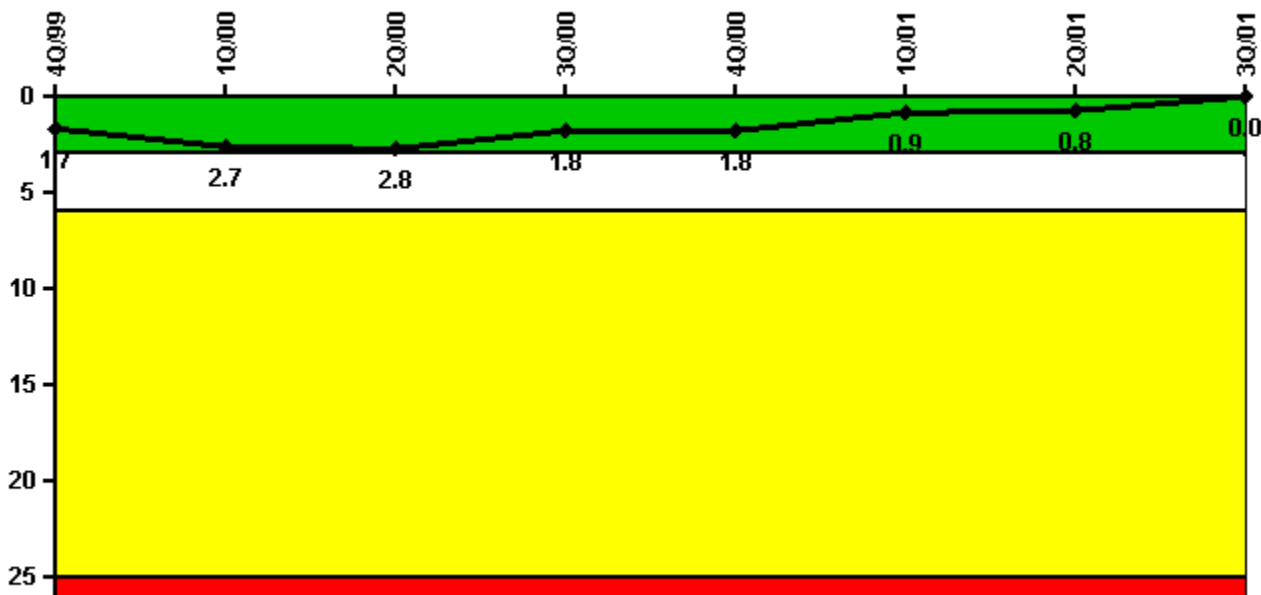


### Calvert Cliffs 1

#### 3Q/2001 Performance Indicators

Licensee's General Comments: none

#### Unplanned Scrams per 7000 Critical Hrs



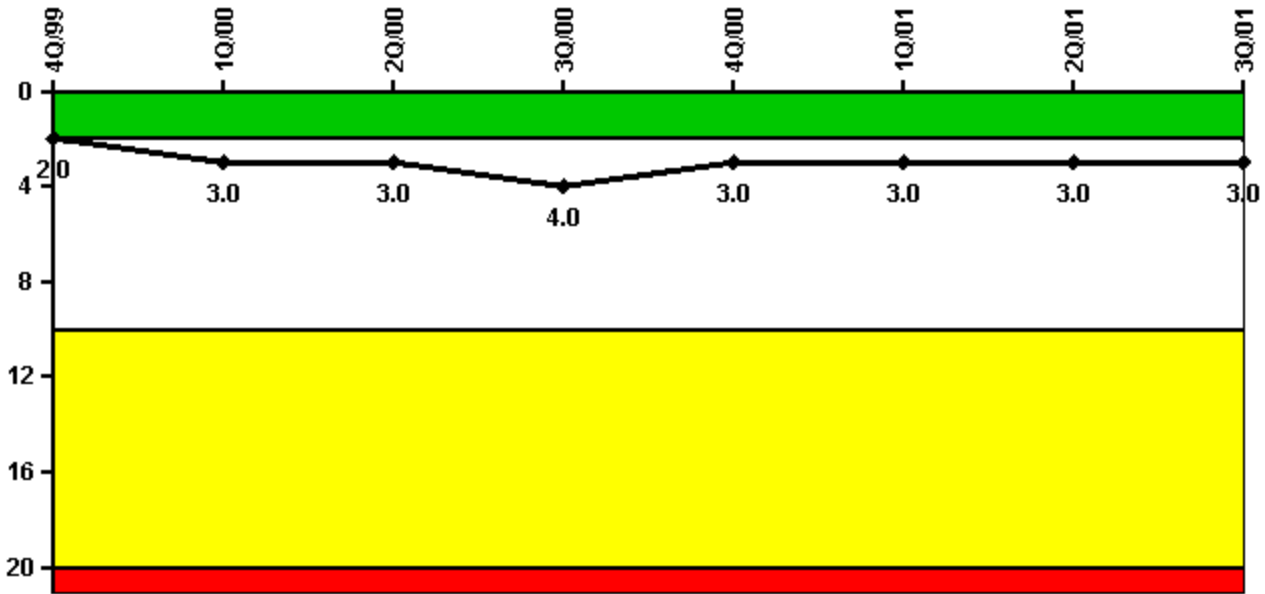
Thresholds: White > 3.0 Yellow > 6.0 Red > 25.0

#### Notes

Unplanned Scrams per 7000 Critical Hrs	4Q/99	1Q/00	2Q/00	3Q/00	4Q/00	1Q/01	2Q/01	3Q/01
Unplanned scrams	0	1.0	0	1.0	0	0	0	0
Critical hours	2209.0	1649.1	1634.4	2181.5	2209.0	2160.0	2157.2	2208.0
<b>Indicator value</b>	<b>1.7</b>	<b>2.7</b>	<b>2.8</b>	<b>1.8</b>	<b>1.8</b>	<b>0.9</b>	<b>0.8</b>	<b>0</b>

Licensee Comments: none

### Scrams with Loss of Normal Heat Removal



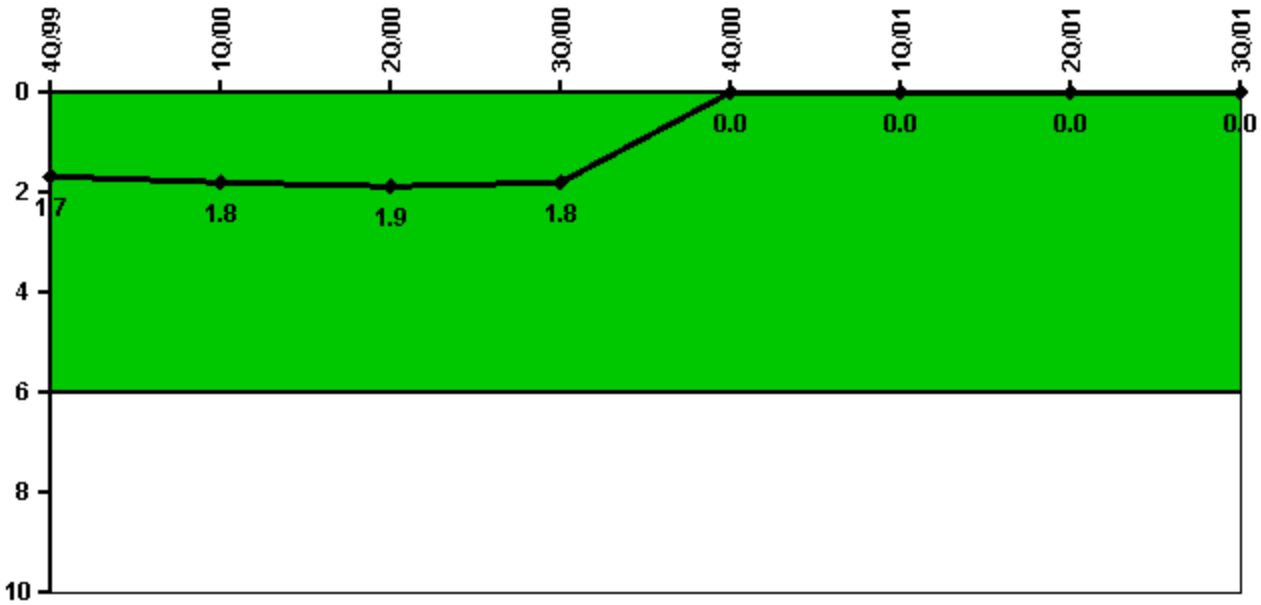
Thresholds: White > 2.0 Yellow > 10.0 Red > 20.0

#### Notes

Scrams with Loss of Normal Heat Removal	4Q/99	1Q/00	2Q/00	3Q/00	4Q/00	1Q/01	2Q/01	3Q/01
Scrams	0	1.0	0	1.0	0	0	0	0
Indicator value	2.0	3.0	3.0	4.0	3.0	3.0	3.0	3.0

Licensee Comments: none

### Unplanned Power Changes per 7000 Critical Hrs



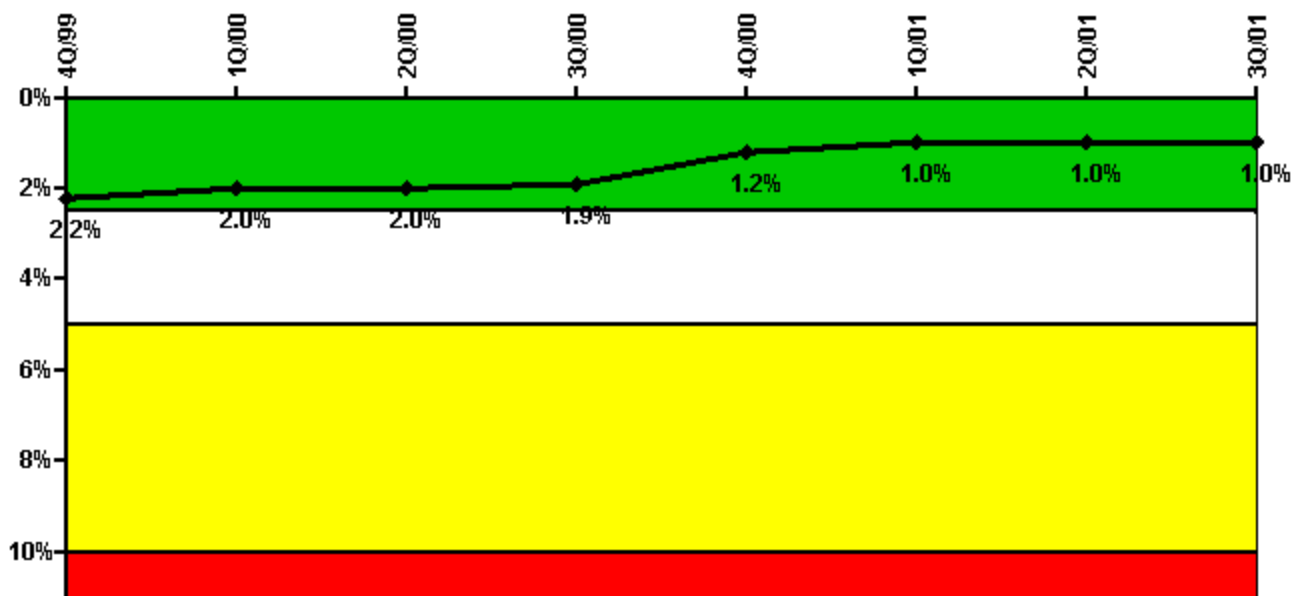
Thresholds: White > 6.0

#### Notes

Unplanned Power Changes per 7000 Critical Hrs	4Q/99	1Q/00	2Q/00	3Q/00	4Q/00	1Q/01	2Q/01	3Q/01
Unplanned power changes	2.0	0	0	0	0	0	0	0
Critical hours	2209.0	1649.1	1634.4	2181.5	2209.0	2160.0	2157.2	2208.0
Indicator value	1.7	1.8	1.9	1.8	0	0	0	0

Licensee Comments: none

### Safety System Unavailability, Emergency AC Power



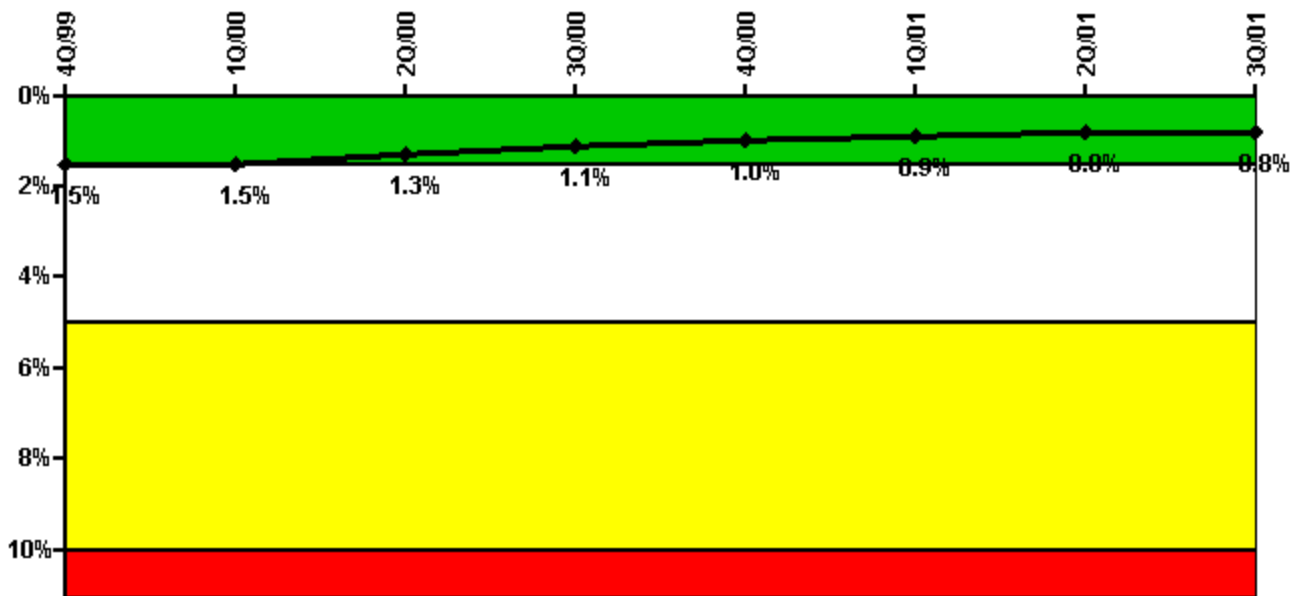
Thresholds: White > 2.5% Yellow > 5.0% Red > 10.0%

#### Notes

Safety System Unavailability, Emergency AC Power	4Q/99	1Q/00	2Q/00	3Q/00	4Q/00	1Q/01	2Q/01	3Q/01
<b>Train 1</b>								
Planned unavailable hours	0	21.49	25.81	29.53	3.73	42.22	8.35	3.50
Unplanned unavailable hours	0	0	28.03	1.10	0	10.72	29.80	0
Fault exposure hours	0	0	0	0	0	0	0	0
Effective Reset hours	0	0	0	0	0	0	0	0
Required hours	2209.00	2184.00	2183.00	2208.00	2209.00	2160.00	2183.00	2208.00
<b>Train 2</b>								
Planned unavailable hours	0.25	25.50	5.00	8.92	0	33.50	0	2.58
Unplanned unavailable hours	0	0	0	3.82	6.33	1.57	0	0
Fault exposure hours	0	0	0	0	0	0	0	0
Effective Reset hours	0	0	0	0	0	0	0	0
Required hours	2209.00	2184.00	2183.00	2208.00	2209.00	2160.00	2183.00	2208.00
<b>Indicator value</b>	<b>2.2%</b>	<b>2.0%</b>	<b>2.0%</b>	<b>1.9%</b>	<b>1.2%</b>	<b>1.0%</b>	<b>1.0%</b>	<b>1.0%</b>

Licensee Comments: none

### Safety System Unavailability, High Pressure Injection System (HPSI)



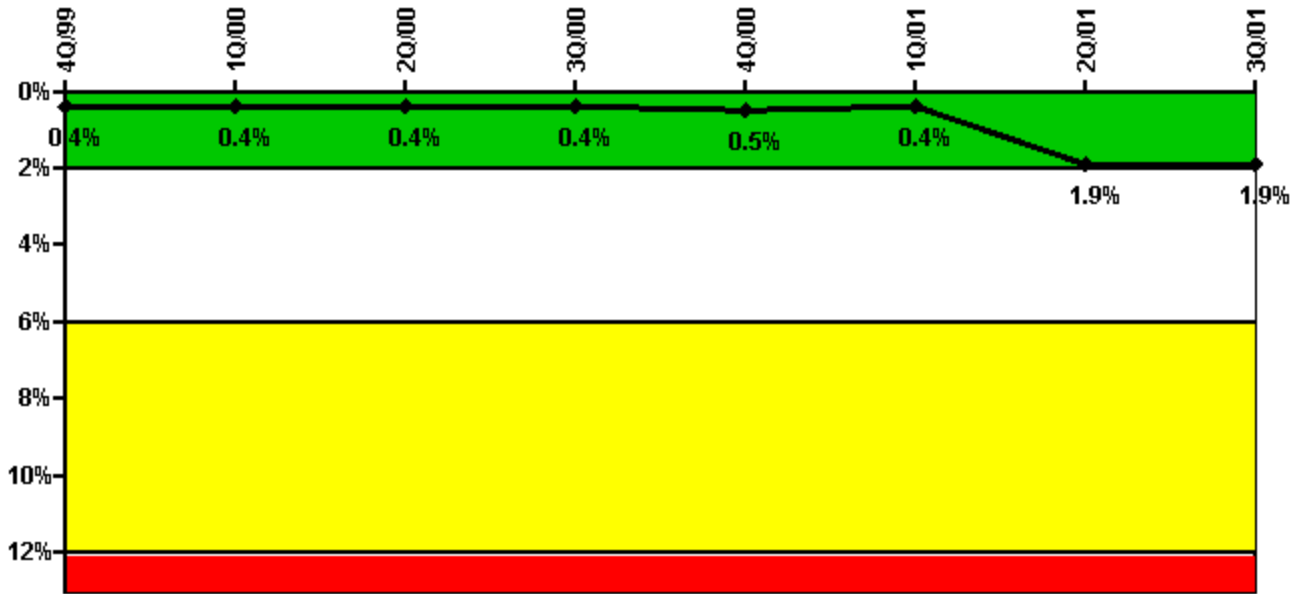
Thresholds: White > 1.5% Yellow > 5.0% Red > 10.0%

Notes

Safety System Unavailability, High Pressure Injection System (HPSI)	4Q/99	1Q/00	2Q/00	3Q/00	4Q/00	1Q/01	2Q/01	3Q/01
<b>Train 1</b>								
Planned unavailable hours	14.02	21.63	1.21	0.38	18.82	14.95	6.27	43.75
Unplanned unavailable hours	0	1.50	7.82	0	0	0	0	0
Fault exposure hours	0	0	0	0	0	0	0	0
Effective Reset hours	0	0	0	0	0	0	0	0
Required hours	2209.00	1649.10	1634.40	2181.50	2209.00	2160.00	2157.20	2208.00
<b>Train 2</b>								
Planned unavailable hours	20.25	21.60	1.04	8.58	9.46	27.21	0.35	0.90
Unplanned unavailable hours	0	1.05	0	0	0	0	0	0
Fault exposure hours	0	0	0	0	0	0	0	0
Effective Reset hours	0	0	0	0	0	0	0	0
Required hours	2209.00	1649.10	1634.40	2181.50	2209.00	2160.00	2157.20	2208.00
<b>Indicator value</b>	<b>1.5%</b>	<b>1.5%</b>	<b>1.3%</b>	<b>1.1%</b>	<b>1.0%</b>	<b>0.9%</b>	<b>0.8%</b>	<b>0.8%</b>

Licensee Comments: none

### Safety System Unavailability, Heat Removal System (AFW)



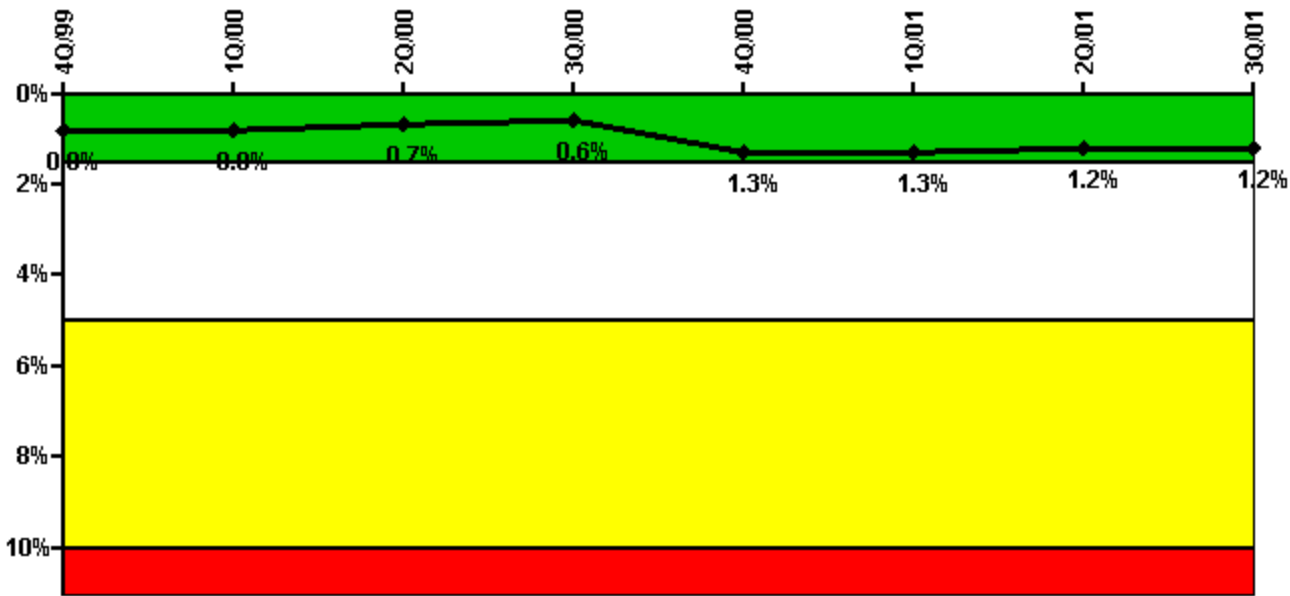
Thresholds: White > 2.0% Yellow > 6.0% Red > 12.0%

#### Notes

Safety System Unavailability, Heat Removal System (AFW)	4Q/99	1Q/00	2Q/00	3Q/00	4Q/00	1Q/01	2Q/01	3Q/01
<b>Train 1</b>								
Planned unavailable hours	0	1.00	1.00	2.50	2.50	1.00	8.17	4.25
Unplanned unavailable hours	0	7.67	0	0	0	0	56.83	0
Fault exposure hours	0	0	0	0	0	81.30	1092.48	0
Effective Reset hours	0	0	0	0	0	0	0	0
Required hours	2209.00	1649.10	1634.40	2181.50	2209.00	2160.00	2157.20	2208.00
<b>Train 2</b>								
Planned unavailable hours	0	1.00	1.00	2.50	2.50	1.00	8.62	3.37
Unplanned unavailable hours	0	7.67	0	0	0	0	10.18	0
Fault exposure hours	0	0	0	0	0	0	0	0
Effective Reset hours	0	0	0	0	0	0	0	0
Required hours	2209.00	1649.10	1634.40	2181.50	2209.00	2160.00	2157.20	2208.00
<b>Train 3</b>								
Planned unavailable hours	0	0	18.33	3.16	16.00	0	1.92	0
Unplanned unavailable hours	0	0	0	0	0	10.50	0	0
Fault exposure hours	0	0	0	0	0	0	0	0
Effective Reset hours	0	0	0	0	0	0	0	0
Required hours	2209.00	1649.10	1634.40	2181.50	2209.00	2160.00	2157.20	2208.00
<b>Indicator value</b>	<b>0.4%</b>	<b>0.4%</b>	<b>0.4%</b>	<b>0.4%</b>	<b>0.5%</b>	<b>0.4%</b>	<b>1.9%</b>	<b>1.9%</b>

Licensee Comments: none

### Safety System Unavailability, Residual Heat Removal System



Thresholds: White > 1.5% Yellow > 5.0% Red > 10.0%

Notes

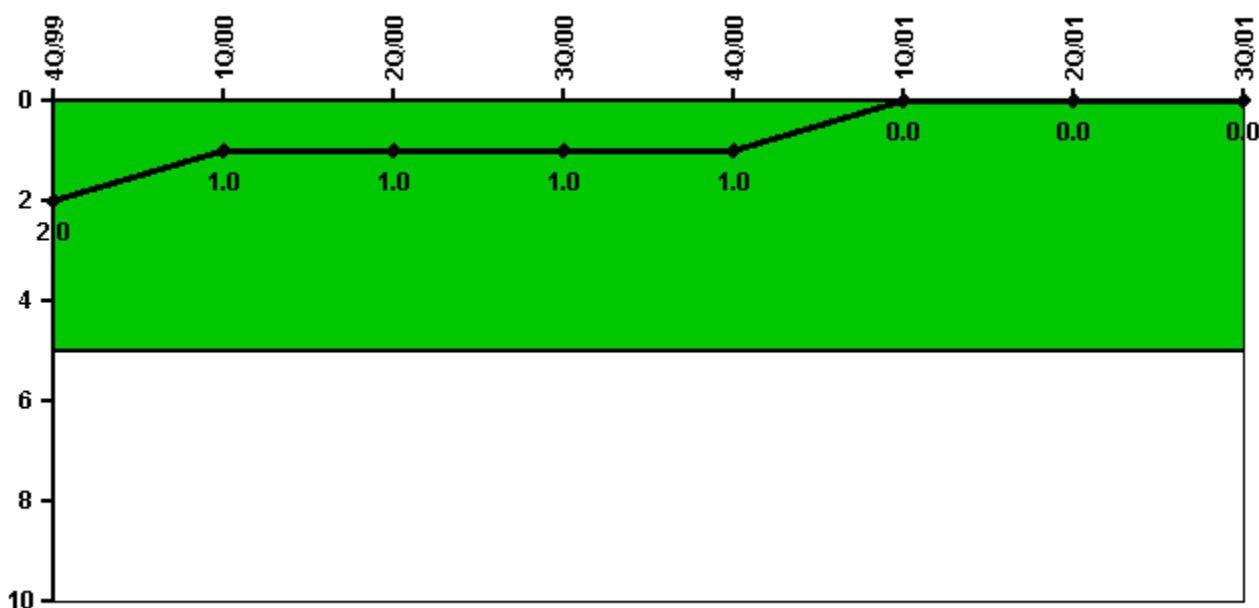
Safety System Unavailability, Residual Heat Removal System	4Q/99	1Q/00	2Q/00	3Q/00	4Q/00	1Q/01	2Q/01	3Q/01
<b>Train 1</b>								
Planned unavailable hours	0	0	0	0	0	0	0	0
Unplanned unavailable hours	0	0	0	0	0	0	0	0
Fault exposure hours	0	0	0	0	0	0	0	0
Effective Reset hours	0	0	0	0	0	0	0	0
Required hours	0	489.20	454.30	0	0	0	0	0
<b>Train 2</b>								
Planned unavailable hours	0	0	0	0	0	0	0	0
Unplanned unavailable hours	0	0	0	0	0	0	0	0
Fault exposure hours	0	0	0	0	0	0	0	0
Effective Reset hours	0	0	0	0	0	0	0	0
Required hours	0	489.20	454.30	0	0	0	0	0
<b>Train 3</b>								
Planned unavailable hours	16.88	25.11	1.58	1.89	23.94	27.96	13.28	21.16
Unplanned unavailable hours	0	1.95	7.82	1.10	0	0	0	2.00
Fault exposure hours	0	0	0	0	0	0	0	0
Effective Reset hours	0	0	0	0	0	0	0	0
Required hours	2209.00	1694.80	1728.70	2208.00	2209.00	2160.00	2183.00	2208.00
<b>Train 4</b>								
Planned unavailable hours	19.44	21.74	2.18	9.52	23.47	31.01	1.48	5.68
Unplanned unavailable hours	0	0	0	0	22.90	0	0	0
Fault exposure hours	0	0	0	0	673.40	0	0	0
Effective Reset hours	0	0	0	0	0	0	0	0
Required hours	2209.00	1694.80	1728.70	2208.00	2209.00	2160.00	2183.00	2208.00
<b>Indicator value</b>	<b>0.8%</b>	<b>0.8%</b>	<b>0.7%</b>	<b>0.6%</b>	<b>1.3%</b>	<b>1.3%</b>	<b>1.2%</b>	<b>1.2%</b>

Licensee Comments:

3Q/01: A change report affecting previously reported data for 4Q/2000 has been submitted with this quarterly report. This change makes the 4Q/2000, 1Q/2001, and 2Q/2001 indicator values different than previously reported.

4Q/00: Fault exposure hours associated with No. 12 Containment Spray Pump Circuit Breaker failing to close upon receipt of an auto-start signal have been increased based on additional information obtained during the performance of the Root Cause Analysis. The Root Cause Analysis, completed following submittal of the original data, determined the breaker was inoperable for the entire time between the last successful operation of the breaker on October 10, 2000 and the failure's time of discovery on November 10, 2000. Expansion of the fault exposure hours necessitated two existing planned and one unplanned unavailable hour durations to be adjusted to prevent a duplication of reported unavailable hours. This change does not affect the color of the indicator.

### Safety System Functional Failures (PWR)



Thresholds: White > 5.0

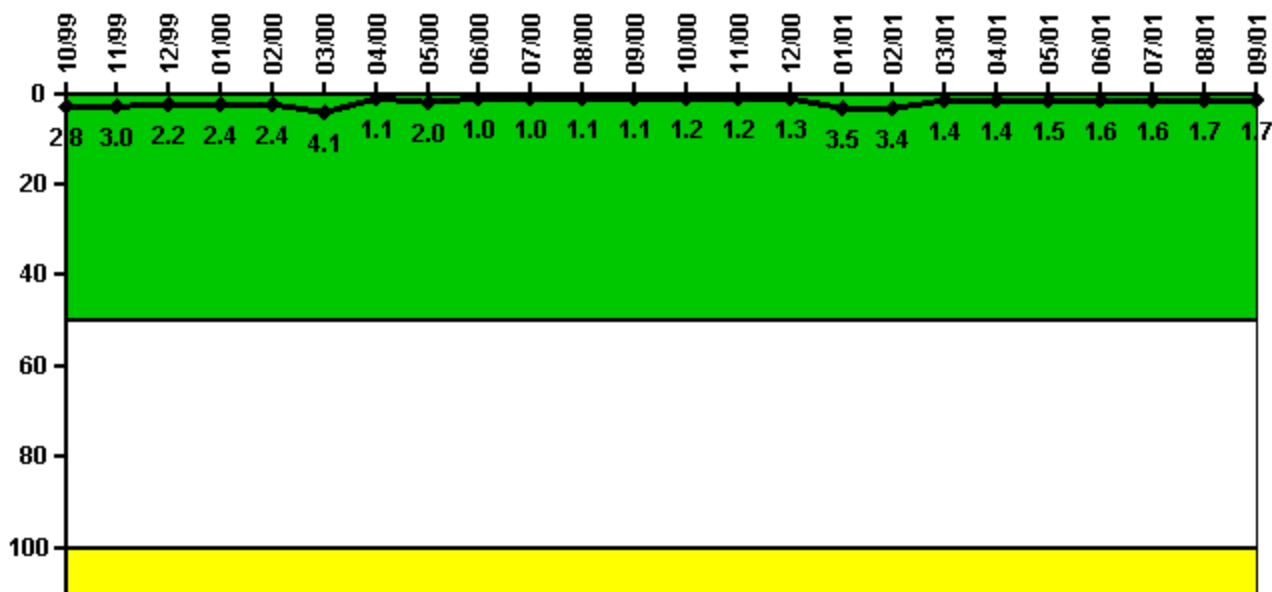
### Notes

Safety System Functional Failures (PWR)	4Q/99	1Q/00	2Q/00	3Q/00	4Q/00	1Q/01	2Q/01	3Q/01
Safety System Functional Failures	0	1	0	0	0	0	0	0
Indicator value	2	1	1	1	1	0	0	0

Licensee Comments: none



### Reactor Coolant System Activity



Thresholds: White > 50.0 Yellow > 100.0

#### Notes

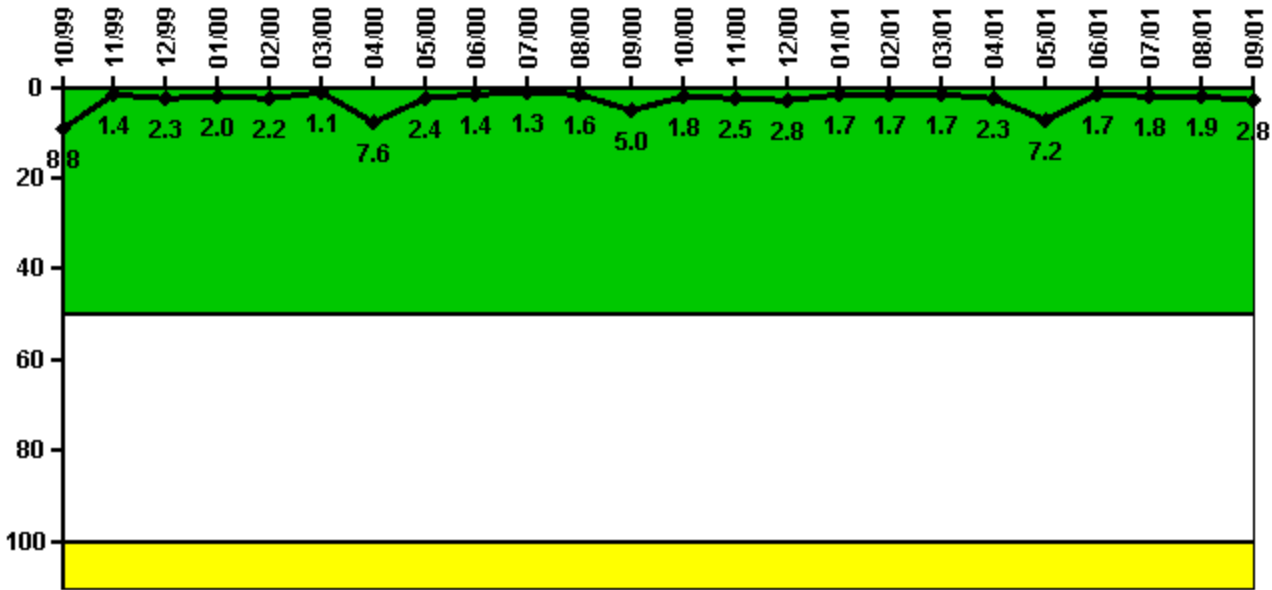
Reactor Coolant System Activity	10/99	11/99	12/99	1/00	2/00	3/00	4/00	5/00	6/00	7/00	8/00	9/00
Maximum activity	0.027500	0.029600	0.022400	0.024200	0.023700	0.041000	0.010600	0.019600	0.010200	0.010100	0.010700	0.011000
Technical specification limit	1.0	1.0	1.0	1.0	1.0	1.0	1.0	1.0	1.0	1.0	1.0	1.0
Indicator value	2.8	3.0	2.2	2.4	2.4	4.1	1.1	2.0	1.0	1.0	1.1	1.1

Reactor Coolant System Activity	10/00	11/00	12/00	1/01	2/01	3/01	4/01	5/01	6/01	7/01	8/01	9/01
Maximum activity	0.012200	0.011900	0.012600	0.035400	0.033600	0.014400	0.014400	0.015200	0.016100	0.016400	0.016700	0.016900
Technical specification limit	1.0	1.0	1.0	1.0	1.0	1.0	1.0	1.0	1.0	1.0	1.0	1.0
Indicator value	1.2	1.2	1.3	3.5	3.4	1.4	1.4	1.5	1.6	1.6	1.7	1.7

Licensee Comments: none

### Reactor Coolant System Leakage



Thresholds: White > 50.0 Yellow > 100.0

**Notes**

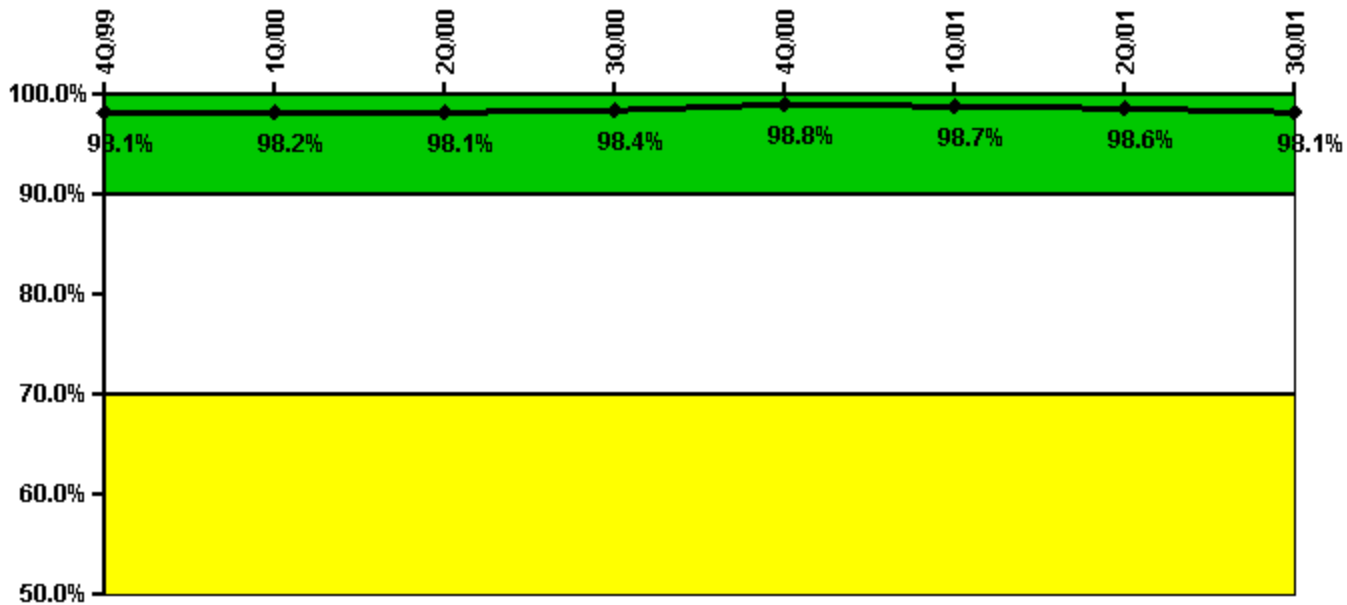
Reactor Coolant System Leakage	10/99	11/99	12/99	1/00	2/00	3/00	4/00	5/00	6/00	7/00	8/00	9/00
Maximum leakage	0.877	0.136	0.233	0.197	0.224	0.109	0.765	0.242	0.144	0.127	0.163	0.500
Technical specification limit	10.0	10.0	10.0	10.0	10.0	10.0	10.0	10.0	10.0	10.0	10.0	10.0
Indicator value	8.8	1.4	2.3	2.0	2.2	1.1	7.6	2.4	1.4	1.3	1.6	5.0

Reactor Coolant System Leakage	10/00	11/00	12/00	1/01	2/01	3/01	4/01	5/01	6/01	7/01	8/01	9/01
Maximum leakage	0.176	0.251	0.277	0.170	0.165	0.170	0.230	0.720	0.170	0.180	0.185	0.281
Technical specification limit	10.0	10.0	10.0	10.0	10.0	10.0	10.0	10.0	10.0	10.0	10.0	10.0
Indicator value	1.8	2.5	2.8	1.7	1.7	1.7	2.3	7.2	1.7	1.8	1.9	2.8

Licensee Comments: none

### Drill/Exercise Performance



Thresholds: White < 90.0% Yellow < 70.0%

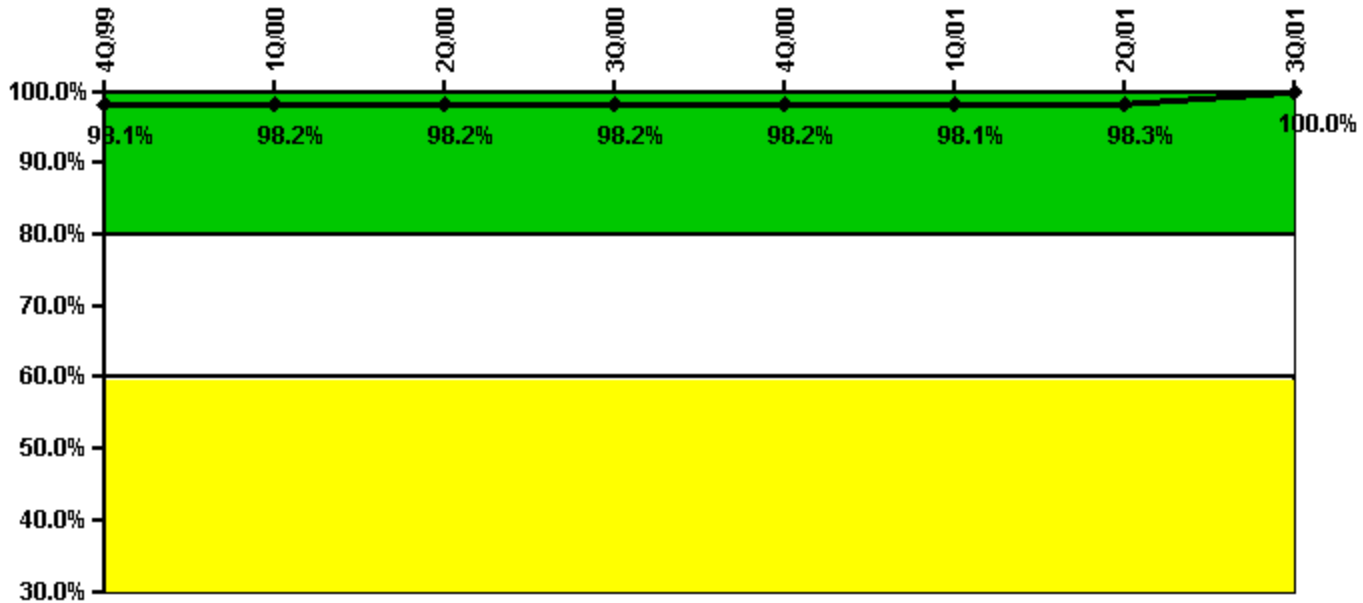
#### Notes

Drill/Exercise Performance	4Q/99	1Q/00	2Q/00	3Q/00	4Q/00	1Q/01	2Q/01	3Q/01
Successful opportunities	57.0	10.0	19.0	32.0	33.0	11.0	22.0	27.0
Total opportunities	59.0	10.0	19.0	33.0	33.0	11.0	22.0	28.0
Indicator value	98.1%	98.2%	98.1%	98.4%	98.8%	98.7%	98.6%	98.1%

#### Licensee Comments:

3Q/01: During an NRC Resident Inspector observation of License Operator Requalification Training (LORT) in the plant control room simulator, it was noted that certain scenarios contained more than one opportunity within the simulation. Analysis revealed two scenarios in the LORT library had multiple opportunities. These scenarios were used on 10 occasions in the past 8 quarters, the period over which this indicator is calculated. Although no data exists to evaluate whether these opportunities were performed timely and accurately, a worst case accounting would not cause the color of the indicator to change in any previous reporting period. This issue has been entered into the site corrective action program to prevent recurrence of this data error.

### ERO Drill Participation



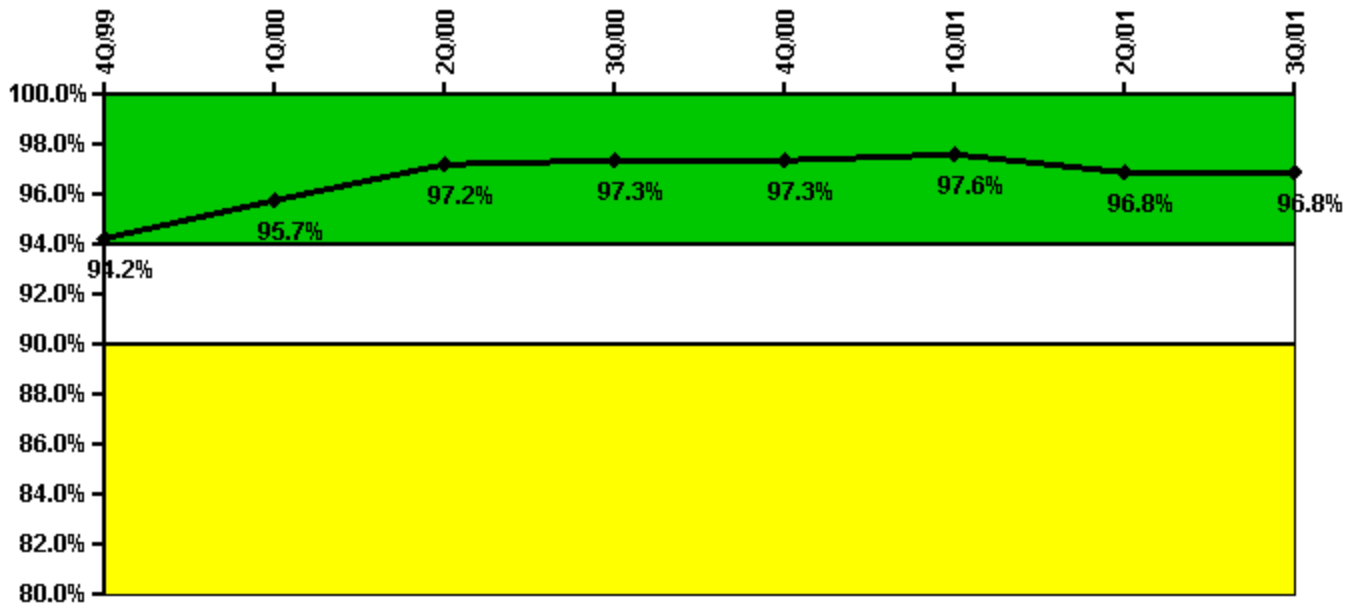
Thresholds: White < 80.0% Yellow < 60.0%

#### Notes

ERO Drill Participation	4Q/99	1Q/00	2Q/00	3Q/00	4Q/00	1Q/01	2Q/01	3Q/01
Participating Key personnel	52.0	56.0	56.0	55.0	54.0	53.0	59.0	57.0
Total Key personnel	53.0	57.0	57.0	56.0	55.0	54.0	60.0	57.0
Indicator value	98.1%	98.2%	98.2%	98.2%	98.2%	98.1%	98.3%	100.0%

Licensee Comments: none

### Alert & Notification System



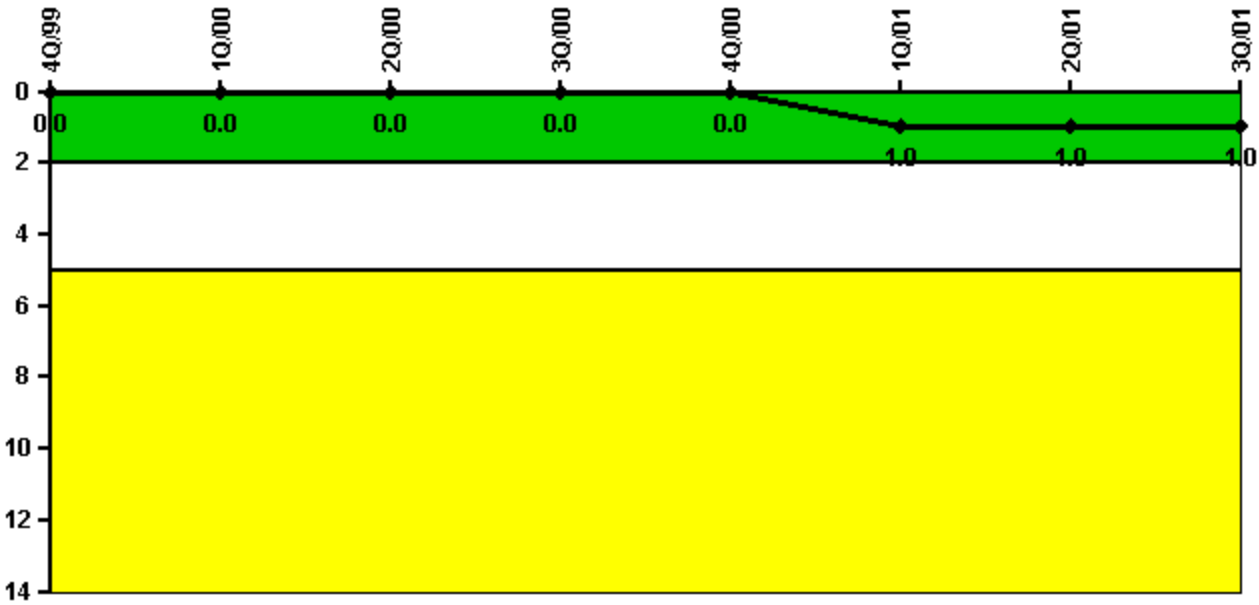
Thresholds: White < 94.0% Yellow < 90.0%

#### Notes

Alert & Notification System	4Q/99	1Q/00	2Q/00	3Q/00	4Q/00	1Q/01	2Q/01	3Q/01
Successful siren-tests	861	929	929	906	1039	990	944	969
Total sirens-tests	885	950	955	936	1068	1002	1002	1002
Indicator value	94.2%	95.7%	97.2%	97.3%	97.3%	97.6%	96.8%	96.8%

Licensee Comments: none

### Occupational Exposure Control Effectiveness



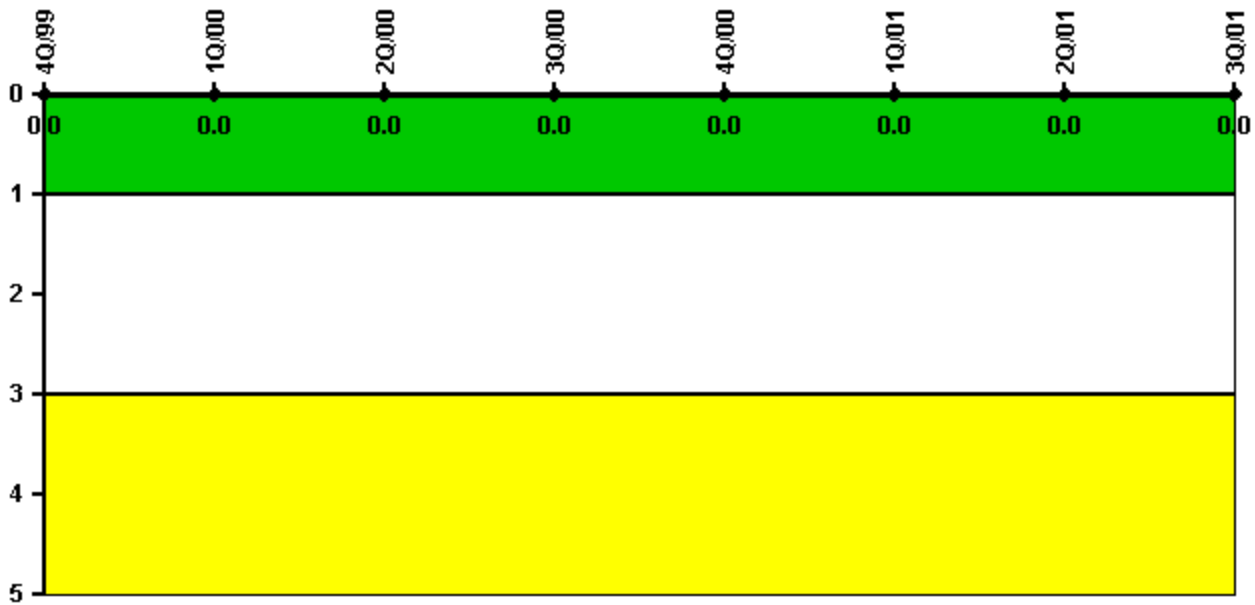
Thresholds: White > 2.0 Yellow > 5.0

#### Notes

Occupational Exposure Control Effectiveness	4Q/99	1Q/00	2Q/00	3Q/00	4Q/00	1Q/01	2Q/01	3Q/01
High radiation area occurrences	0	0	0	0	0	1	0	0
Very high radiation area occurrences	0	0	0	0	0	0	0	0
Unintended exposure occurrences	0	0	0	0	0	0	0	0
<b>Indicator value</b>	<b>0</b>	<b>0</b>	<b>0</b>	<b>0</b>	<b>0</b>	<b>1</b>	<b>1</b>	<b>1</b>

Licensee Comments: none

### RETS/ODCM Radiological Effluent



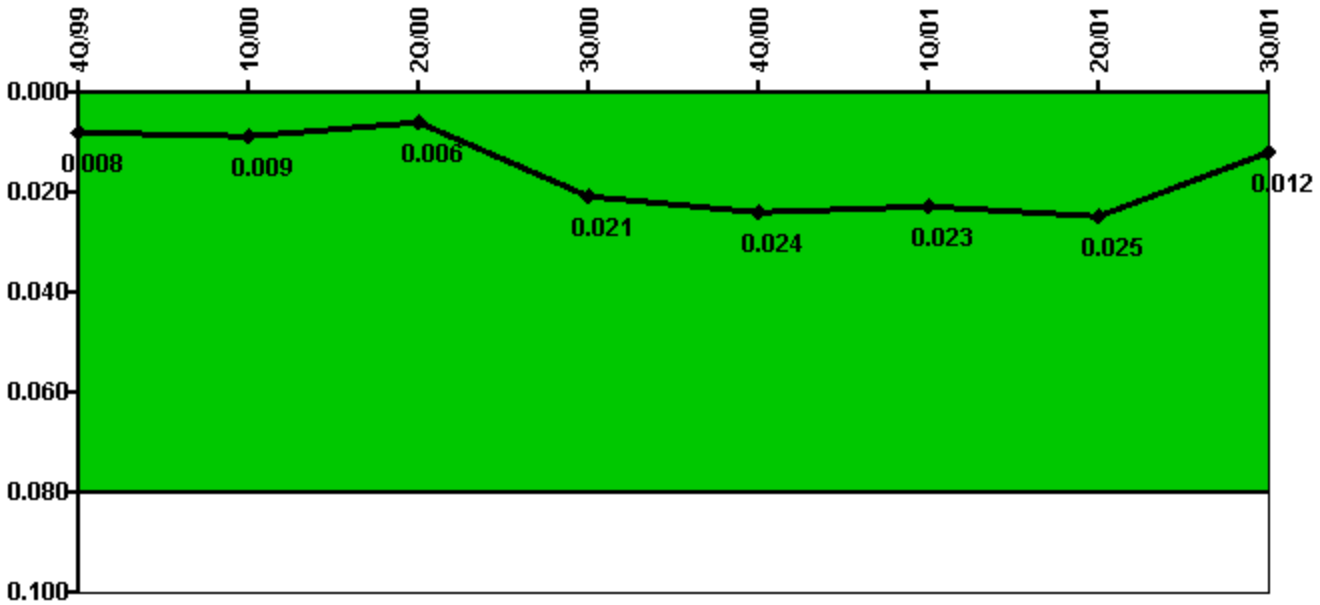
Thresholds: White > 1.0 Yellow > 3.0

#### Notes

RETS/ODCM Radiological Effluent	4Q/99	1Q/00	2Q/00	3Q/00	4Q/00	1Q/01	2Q/01	3Q/01
RETS/ODCM occurrences	0	0	0	0	0	0	0	0
Indicator value	0	0	0	0	0	0	0	0

Licensee Comments: none

### Protected Area Security Performance Index



Thresholds: White > 0.080

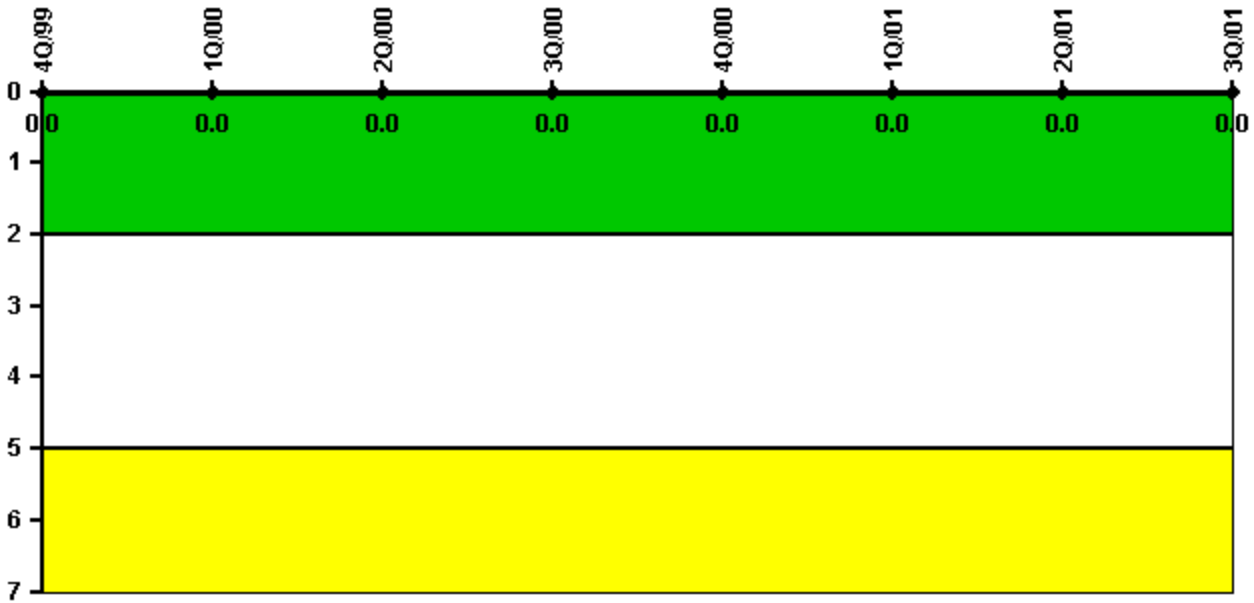
#### Notes

Protected Area Security Performance Index	4Q/99	1Q/00	2Q/00	3Q/00	4Q/00	1Q/01	2Q/01	3Q/01
IDS compensatory hours	50.10	46.00	38.60	390.70	116.70	14.80	85.60	69.60
CCTV compensatory hours	0	0	0	0	0	0	0	0
IDS normalization factor	1.40	1.40	1.40	1.40	1.40	1.40	1.40	1.40
CCTV normalization factor	1.2	1.2	1.2	1.2	1.2	1.2	1.2	1.2
<b>Index Value</b>	<b>0.008</b>	<b>0.009</b>	<b>0.006</b>	<b>0.021</b>	<b>0.024</b>	<b>0.023</b>	<b>0.025</b>	<b>0.012</b>

Licensee Comments: none



### Personnel Screening Program



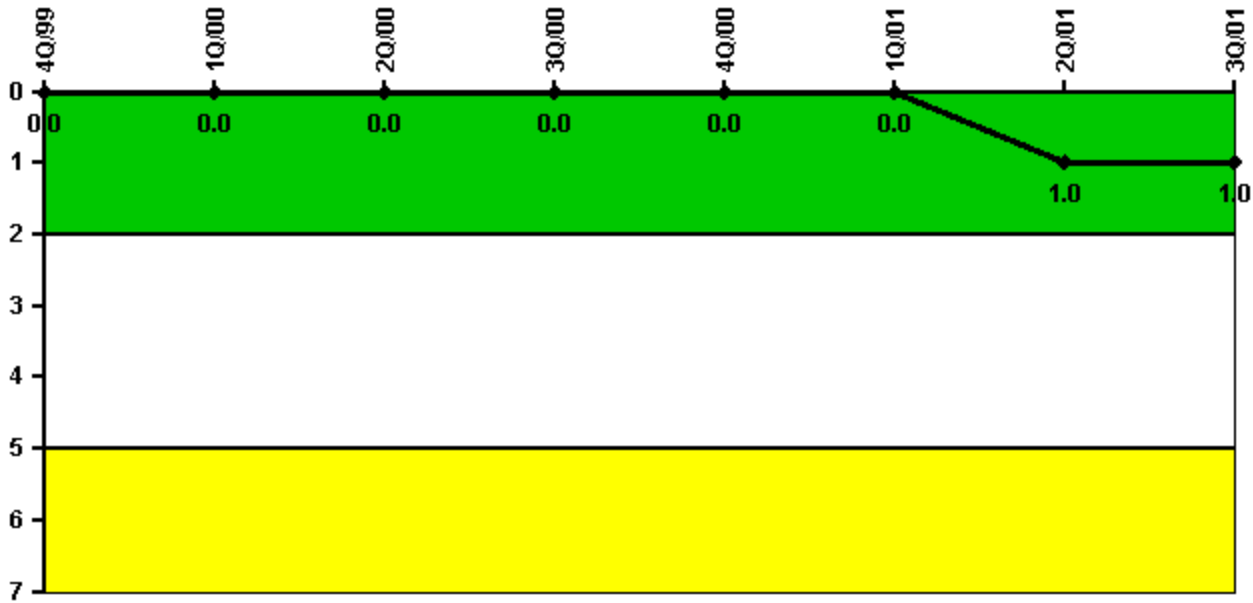
Thresholds: White > 2.0 Yellow > 5.0

#### Notes

Personnel Screening Program	4Q/99	1Q/00	2Q/00	3Q/00	4Q/00	1Q/01	2Q/01	3Q/01
Program failures	0	0	0	0	0	0	0	0
Indicator value	0	0	0	0	0	0	0	0

Licensee Comments: none

### FFD/Personnel Reliability



Thresholds: White > 2.0 Yellow > 5.0

#### Notes

FFD/Personnel Reliability	4Q/99	1Q/00	2Q/00	3Q/00	4Q/00	1Q/01	2Q/01	3Q/01
Program Failures	0	0	0	0	0	0	1	0
Indicator value	0	0	0	0	0	0	1	1

#### Licensee Comments:

3Q/01: A change report affecting previously reported data for 2Q/2001 has been submitted with this quarterly report. This change makes the 2Q/2001 indicator value different than previously reported.

2Q/01: A reportable event occurred in May 2001, which was inadvertently omitted from the 2Q/2001 indicator report. This change did not change the color of the indicator.

▲ [PI Summary](#) | [Inspection Findings Summary](#) | [Action Matrix Summary](#) | [Reactor Oversight Process](#)

Last Modified: March 26, 2002