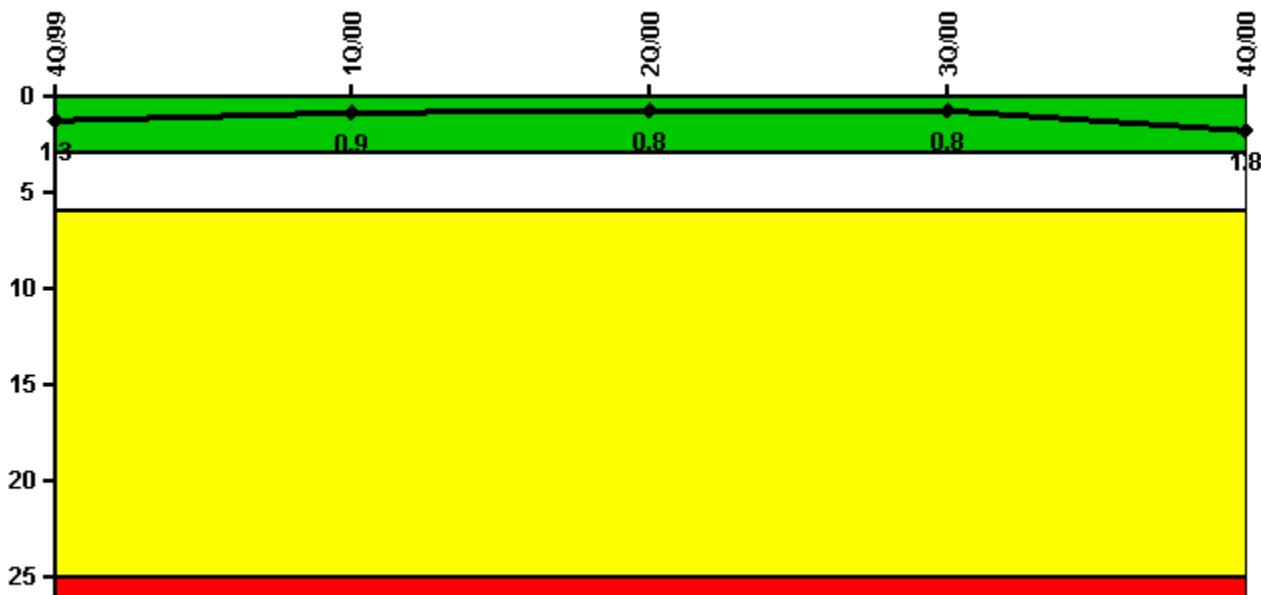


Clinton

4Q/2000 Performance Indicators

Licensee's General Comments: none

Unplanned Scrams per 7000 Critical Hrs



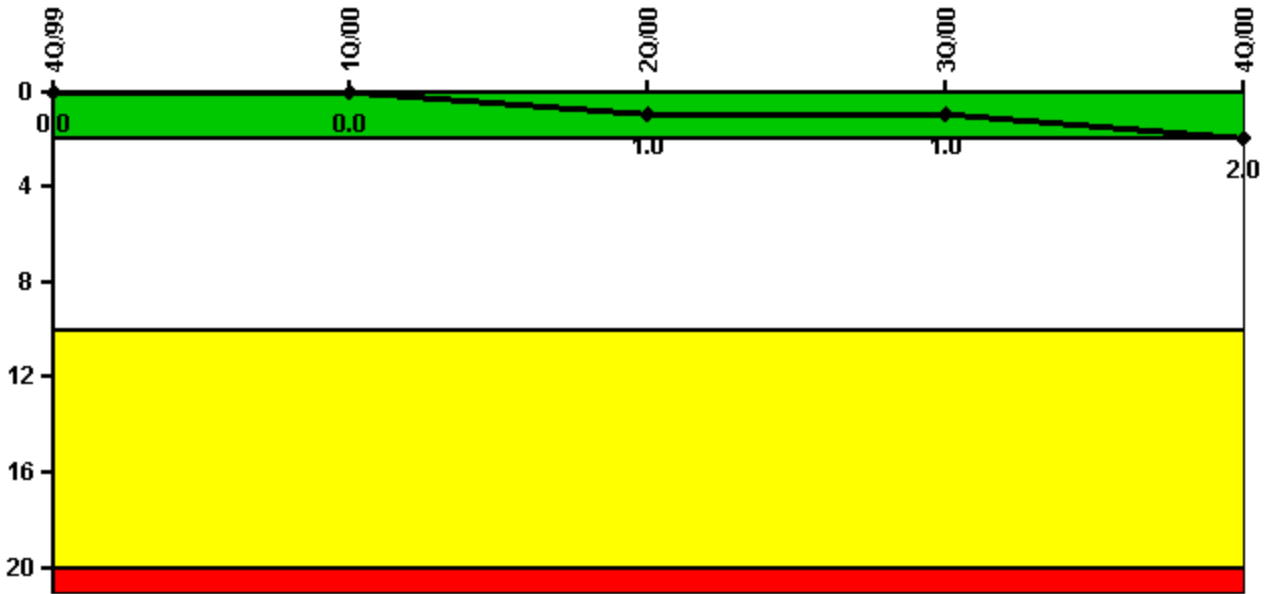
Thresholds: White > 3.0 Yellow > 6.0 Red > 25.0

Notes

| Unplanned Scrams per 7000 Critical Hrs | 4Q/99 | 1Q/00 | 2Q/00 | 3Q/00 | 4Q/00 |
|--|------------|------------|------------|------------|------------|
| Unplanned scrams | 0 | 0 | 1.0 | 0 | 1.0 |
| Critical hours | 2209.0 | 2184.0 | 2005.6 | 2038.2 | 1481.6 |
| | | | | | |
| Indicator value | 1.3 | 0.9 | 0.8 | 0.8 | 1.8 |

Licensee Comments: none

Scrams with Loss of Normal Heat Removal



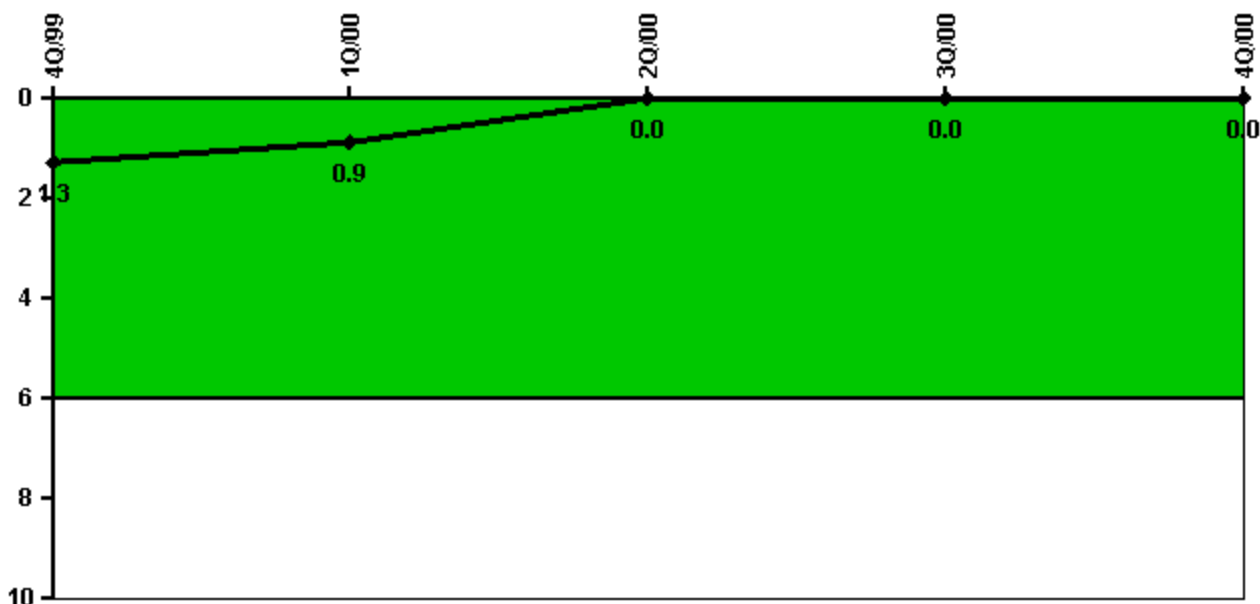
Thresholds: White > 2.0 Yellow > 10.0 Red > 20.0

Notes

| Scrams with Loss of Normal Heat Removal | 4Q/99 | 1Q/00 | 2Q/00 | 3Q/00 | 4Q/00 |
|---|-------|-------|-------|-------|-------|
| Scrams | 0 | 0 | 1.0 | 0 | 1.0 |
| Indicator value | 0 | 0 | 1.0 | 1.0 | 2.0 |

Licensee Comments: none

Unplanned Power Changes per 7000 Critical Hrs



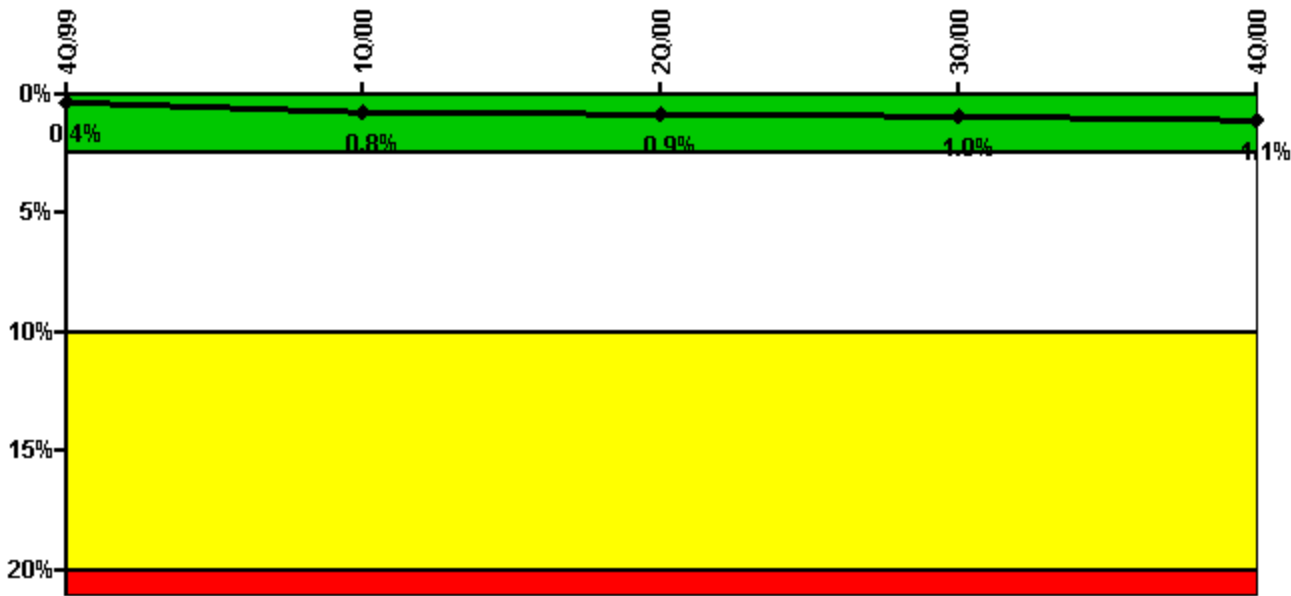
Thresholds: White > 6.0

Notes

| Unplanned Power Changes per 7000 Critical Hrs | 4Q/99 | 1Q/00 | 2Q/00 | 3Q/00 | 4Q/00 |
|---|------------|------------|----------|----------|----------|
| Unplanned power changes | 0 | 0 | 0 | 0 | 0 |
| Critical hours | 2209.0 | 2184.0 | 2005.6 | 2038.2 | 1481.6 |
| | | | | | |
| Indicator value | 1.3 | 0.9 | 0 | 0 | 0 |

Licensee Comments: none

Safety System Unavailability, Emergency AC Power, >2EDG



Thresholds: White > 2.5% Yellow > 10.0% Red > 20.0%

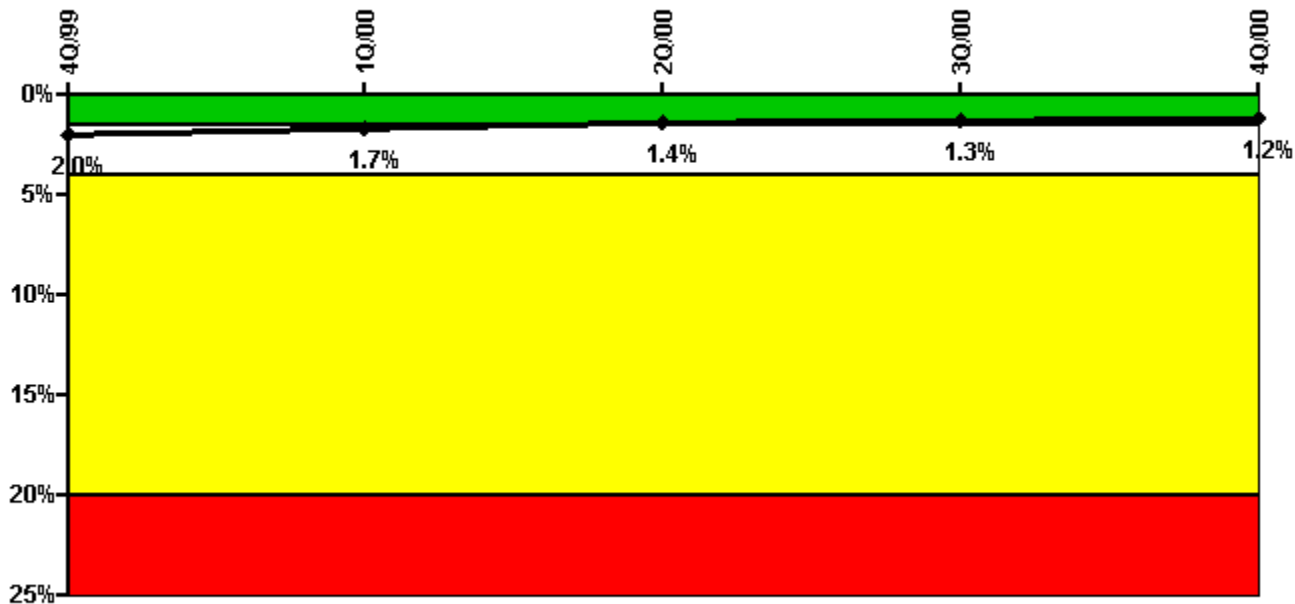
Notes

| Safety System Unavailability, Emergency AC Power, >2EDG | 4Q/99 | 1Q/00 | 2Q/00 | 3Q/00 | 4Q/00 |
|---|-------------|-------------|-------------|-------------|-------------|
| Train 1 | | | | | |
| Planned unavailable hours | 1.70 | 44.40 | 14.30 | 41.20 | 8.00 |
| Unplanned unavailable hours | 0 | 0 | 0 | 0 | 0 |
| Fault exposure hours | 0 | 0 | 0 | 0 | 0 |
| Effective Reset hours | 0 | 0 | 0 | 0 | 0 |
| Required hours | 2209.00 | 2184.00 | 2183.00 | 2208.00 | 2209.00 |
| Train 2 | | | | | |
| Planned unavailable hours | 86.90 | 48.30 | 2.10 | 44.10 | 6.00 |
| Unplanned unavailable hours | 0 | 0 | 0 | 0.20 | 12.50 |
| Fault exposure hours | 0 | 0 | 0 | 0 | 0 |
| Effective Reset hours | 0 | 0 | 0 | 0 | 0 |
| Required hours | 2209.00 | 2184.00 | 2183.00 | 2208.00 | 2209.00 |
| Train 3 | | | | | |
| Planned unavailable hours | 47.50 | 18.60 | 36.20 | 11.50 | 29.00 |
| Unplanned unavailable hours | 0 | 258.50 | 14.30 | 3.90 | 0 |
| Fault exposure hours | 0 | 0 | 0 | 0 | 0 |
| Effective Reset hours | 0 | 0 | 0 | 0 | 0 |
| Required hours | 2209.00 | 2184.00 | 2183.00 | 2208.00 | 2209.00 |
| | | | | | |
| Indicator value | 0.4% | 0.8% | 0.9% | 1.0% | 1.1% |

Licensee Comments:

2Q/00: This indicator has been revised to add 1.3 hours of planned unavailability to each of the Divisions 2 and 3 emergency diesel generators to account for unavailability due to carbon dioxide system actuation testing in June 2000 that was not previously reported. This change does not affect the color of the indicator.

Safety System Unavailability, High Pressure Injection System (HPCS)



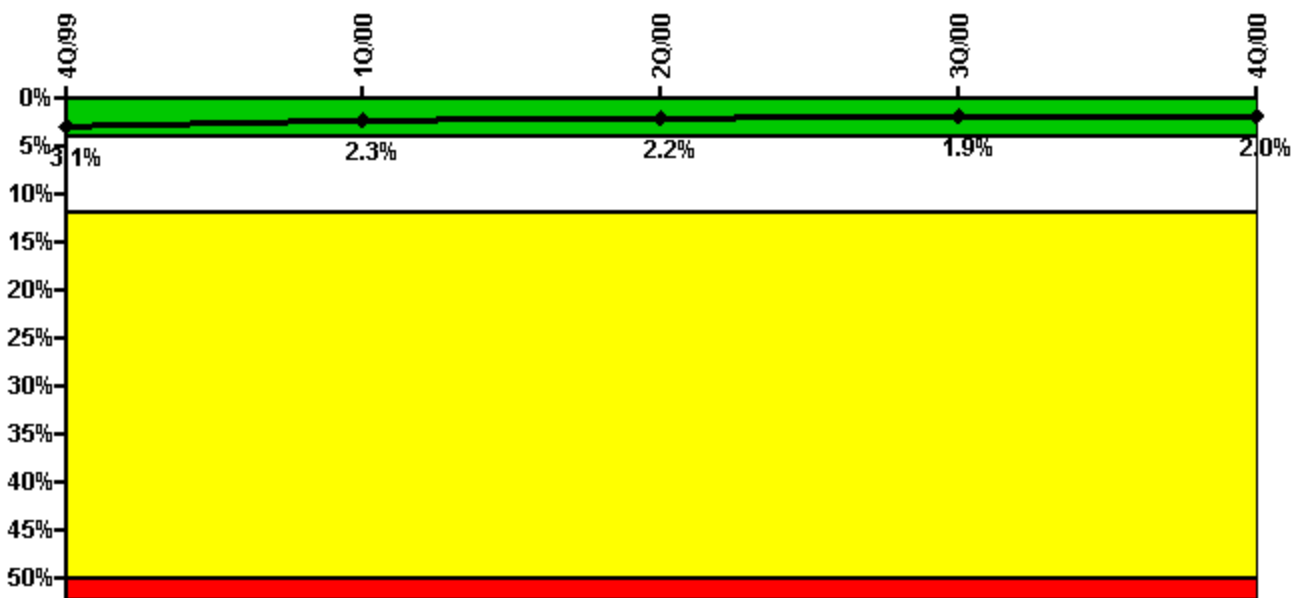
Thresholds: White > 1.5% Yellow > 4.0% Red > 20.0%

Notes

| Safety System Unavailability, High Pressure Injection System (HPCS) | 4Q/99 | 1Q/00 | 2Q/00 | 3Q/00 | 4Q/00 |
|---|-------------|-------------|-------------|-------------|-------------|
| Train 1 | | | | | |
| Planned unavailable hours | 4.00 | 20.90 | 2.90 | 19.30 | 3.80 |
| Unplanned unavailable hours | 65.00 | 0 | 0 | 0 | 0 |
| Fault exposure hours | 0 | 0 | 0 | 0 | 0 |
| Effective Reset hours | 0 | 0 | 0 | 0 | 0 |
| Required hours | 2209.00 | 2184.00 | 2005.60 | 2038.20 | 1481.60 |
| | | | | | |
| Indicator value | 2.0% | 1.7% | 1.4% | 1.3% | 1.2% |

Licensee Comments: none

Safety System Unavailability, Heat Removal System (RCIC)



Thresholds: White > 4.0% Yellow > 12.0% Red > 50.0%

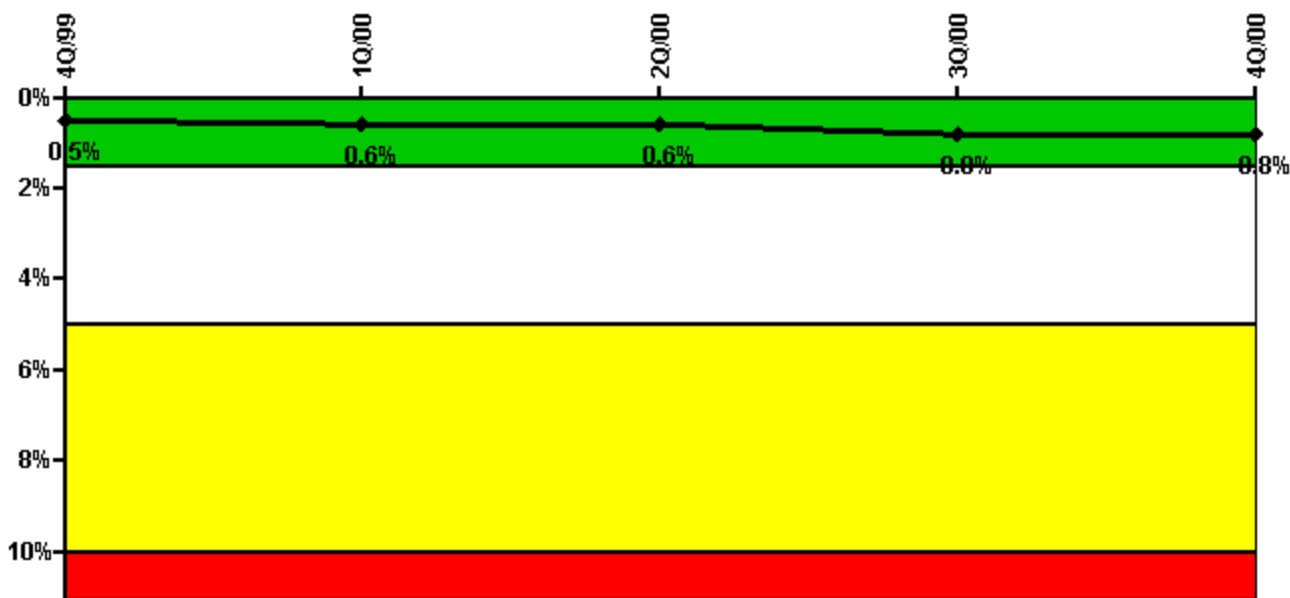
Notes

| Safety System Unavailability, Heat Removal System (RCIC) | 4Q/99 | 1Q/00 | 2Q/00 | 3Q/00 | 4Q/00 |
|--|-------------|-------------|-------------|-------------|-------------|
| Train 1 | | | | | |
| Planned unavailable hours | 28.00 | 3.40 | 39.30 | 4.30 | 52.00 |
| Unplanned unavailable hours | 0 | 0 | 0 | 0 | 0 |
| Fault exposure hours | 0 | 0 | 0 | 0 | 0 |
| Effective Reset hours | 0 | 0 | 0 | 0 | 0 |
| Required hours | 2209.00 | 2184.00 | 2005.60 | 2038.20 | 1481.60 |
| | | | | | |
| Indicator value | 3.1% | 2.3% | 2.2% | 1.9% | 2.0% |

Licensee Comments:

2Q/00: Second Quarter 2000 Data Correction: 13.5 hours of planned unavailability were removed. These hours were initially charged to Reactor Core Isolation Cooling (RCIC) in June 2000 due to the unavailability of a support system, Shutdown Service Water System (SX). NEI 99-02 allows the use of the Site Service Water System (WS) as a backup to SX; therefore, the RCIC System should not have been counted as unavailable during the unavailability of the SX System. This change did not affect the color of the performance indicator.

Safety System Unavailability, Residual Heat Removal System



Thresholds: White > 1.5% Yellow > 5.0% Red > 10.0%

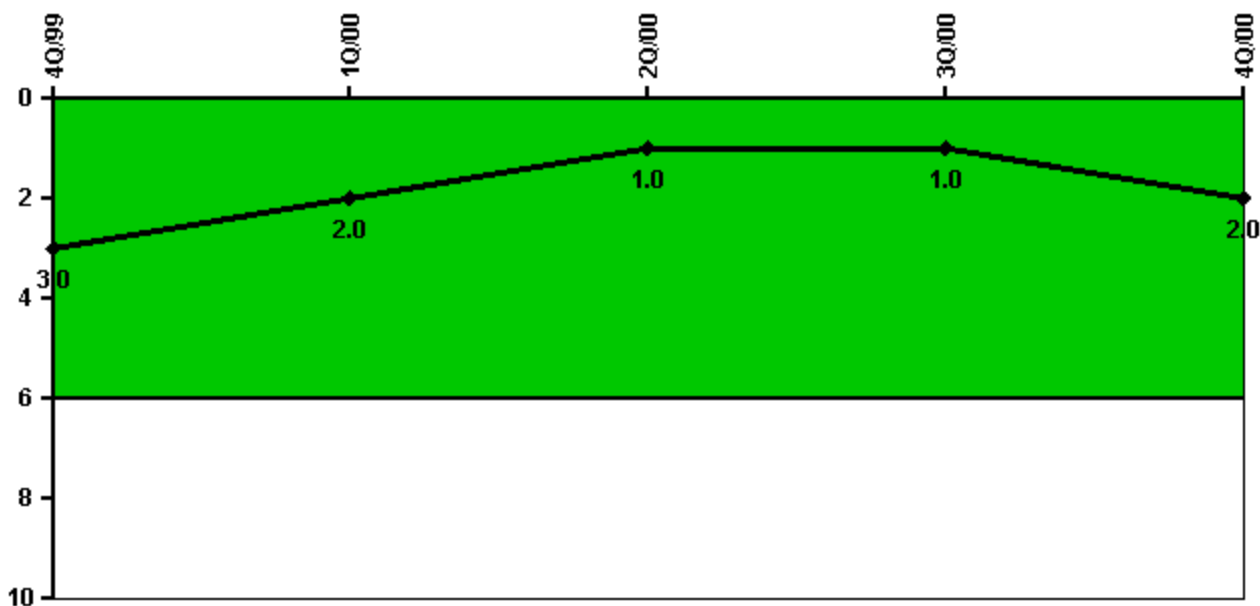
Notes

| Safety System Unavailability, Residual Heat Removal System | 4Q/99 | 1Q/00 | 2Q/00 | 3Q/00 | 4Q/00 |
|--|-------------|-------------|-------------|-------------|-------------|
| Train 1 | | | | | |
| Planned unavailable hours | 27.60 | 23.80 | 7.30 | 30.10 | 16.80 |
| Unplanned unavailable hours | 26.90 | 1.70 | 2.30 | 1.00 | 0.90 |
| Fault exposure hours | 0 | 0 | 0 | 0 | 0 |
| Effective Reset hours | 0 | 0 | 0 | 0 | 0 |
| Required hours | 2209.00 | 2184.00 | 2183.00 | 2208.00 | 2209.00 |
| Train 2 | | | | | |
| Planned unavailable hours | 31.50 | 28.10 | 9.60 | 36.20 | 13.50 |
| Unplanned unavailable hours | 27.10 | 0.30 | 10.70 | 0 | 0 |
| Fault exposure hours | 0 | 0 | 0 | 0 | 0 |
| Effective Reset hours | 0 | 0 | 0 | 0 | 0 |
| Required hours | 2209.00 | 2184.00 | 2183.00 | 2208.00 | 2209.00 |
| | | | | | |
| Indicator value | 0.5% | 0.6% | 0.6% | 0.8% | 0.8% |

Licensee Comments:

2Q/00: Second Quarter 2000 Data Correction: 13.5 hours planned unavailability were removed. These hours were initially charged to Residual Heat Removal (RHR) Train A in June 2000 due to the unavailability of a support system, Shutdown Service Water System (SX). NEI 99-02 allows the use of the Site Service Water System (WS) as a backup to SX; therefore, the RHR Train A should not have been counted as unavailable during the unavailability of the SX System. This change did not affect the color of the performance indicator.

Safety System Functional Failures (BWR)



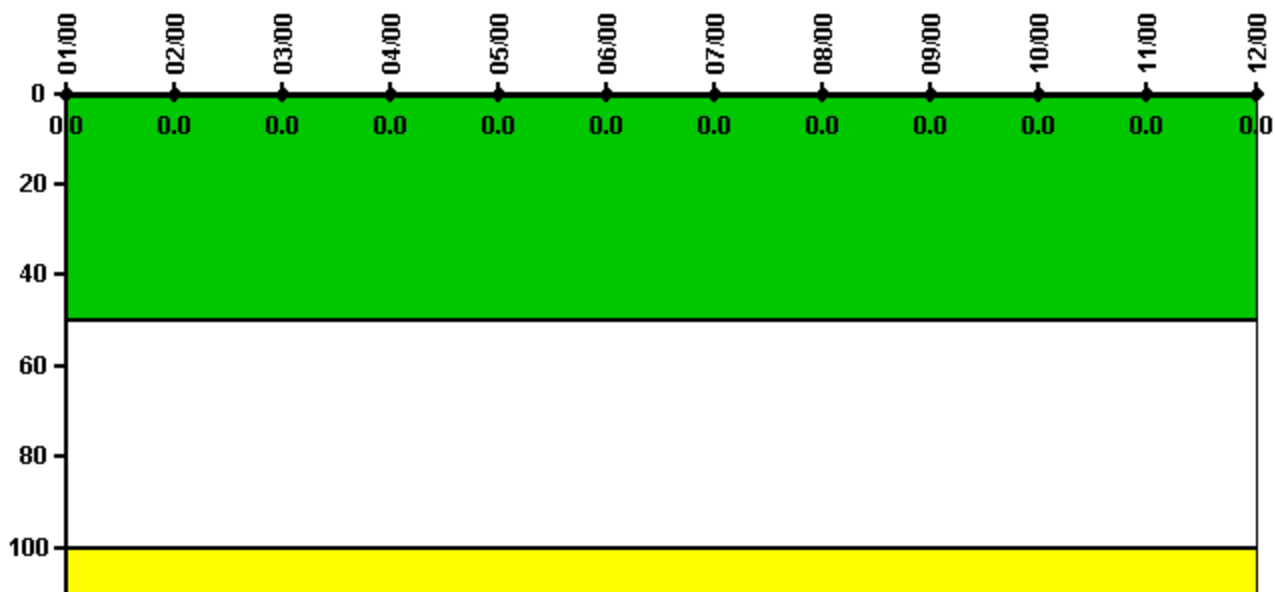
Thresholds: White > 6.0

Notes

| Safety System Functional Failures (BWR) | 4Q/99 | 1Q/00 | 2Q/00 | 3Q/00 | 4Q/00 |
|---|-------|-------|-------|-------|-------|
| Safety System Functional Failures | 0 | 1 | 0 | 0 | 1 |
| | | | | | |
| Indicator value | 3 | 2 | 1 | 1 | 2 |

Licensee Comments: none

Reactor Coolant System Activity



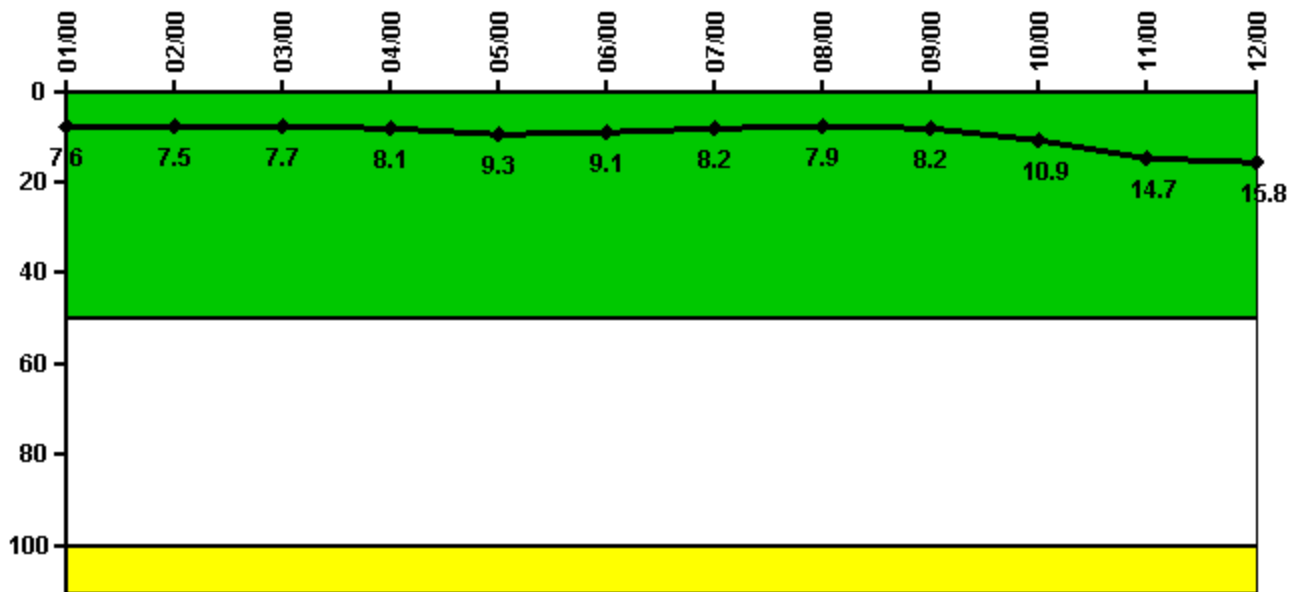
Thresholds: White > 50.0 Yellow > 100.0

Notes

| Reactor Coolant System Activity | 1/00 | 2/00 | 3/00 | 4/00 | 5/00 | 6/00 | 7/00 | 8/00 | 9/00 | 10/00 | 11/00 | 12/00 |
|---------------------------------|----------|----------|----------|----------|----------|----------|----------|----------|----------|----------|----------|----------|
| Maximum activity | 0.000039 | 0.000038 | 0.000049 | 0.000046 | 0.000054 | 0.000058 | 0.000060 | 0.000048 | 0.000047 | 0.000047 | 0.000045 | 0.000041 |
| Technical specification limit | 0.2 | 0.2 | 0.2 | 0.2 | 0.2 | 0.2 | 0.2 | 0.2 | 0.2 | 0.2 | 0.2 | 0.2 |
| Indicator value | 0 | 0 | 0 | 0 | 0 | 0 | 0 | 0 | 0 | 0 | 0 | 0 |

Licensee Comments: none

Reactor Coolant System Leakage



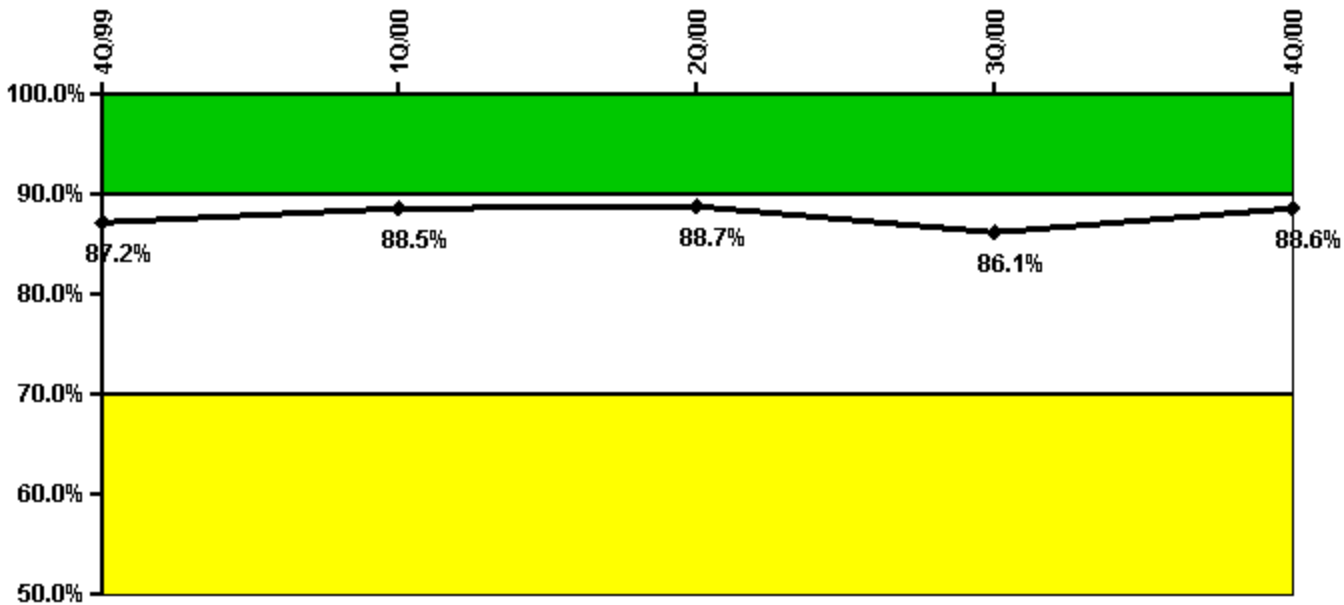
Thresholds: White > 50.0 Yellow > 100.0

Notes

| Reactor Coolant System Leakage | 1/00 | 2/00 | 3/00 | 4/00 | 5/00 | 6/00 | 7/00 | 8/00 | 9/00 | 10/00 | 11/00 | 12/00 |
|--------------------------------|-------|-------|-------|-------|-------|-------|-------|-------|-------|-------|-------|-------|
| Maximum leakage | 2.280 | 2.250 | 2.310 | 2.420 | 2.790 | 2.730 | 2.460 | 2.370 | 2.460 | 3.260 | 4.400 | 4.740 |
| Technical specification limit | 30.0 | 30.0 | 30.0 | 30.0 | 30.0 | 30.0 | 30.0 | 30.0 | 30.0 | 30.0 | 30.0 | 30.0 |
| Indicator value | 7.6 | 7.5 | 7.7 | 8.1 | 9.3 | 9.1 | 8.2 | 7.9 | 8.2 | 10.9 | 14.7 | 15.8 |

Licensee Comments: none

Drill/Exercise Performance



Thresholds: White < 90.0% Yellow < 70.0%

Notes

| Drill/Exercise Performance | 4Q/99 | 1Q/00 | 2Q/00 | 3Q/00 | 4Q/00 |
|----------------------------|-------|-------|-------|-------|-------|
| Successful opportunities | 61.0 | 13.0 | 10.0 | 43.0 | 11.0 |
| Total opportunities | 72.0 | 13.0 | 11.0 | 54.0 | 11.0 |
| Indicator value | 87.2% | 88.5% | 88.7% | 86.1% | 88.6% |

Licensee Comments:

4Q/00: A self-assessment of this performance indicator identified that statistics for non-licensed operator job performance measures used to qualify ERO communicators were not included in the data for third and fourth quarters of 1999 and first, third, and fourth quarters of 2000. Correcting this error changes the indicator values from GREEN to WHITE for the fourth quarter 1999 and all quarters of 2000.

3Q/00: A self-assessment of this performance indicator identified that statistics for non-licensed operator job performance measures used to qualify ERO communicators were not included in the data for third and fourth quarters of 1999 and first, third, and fourth quarters of 2000. Correcting this error changes the indicator values from GREEN to WHITE for the fourth quarter 1999 and all quarters of 2000.

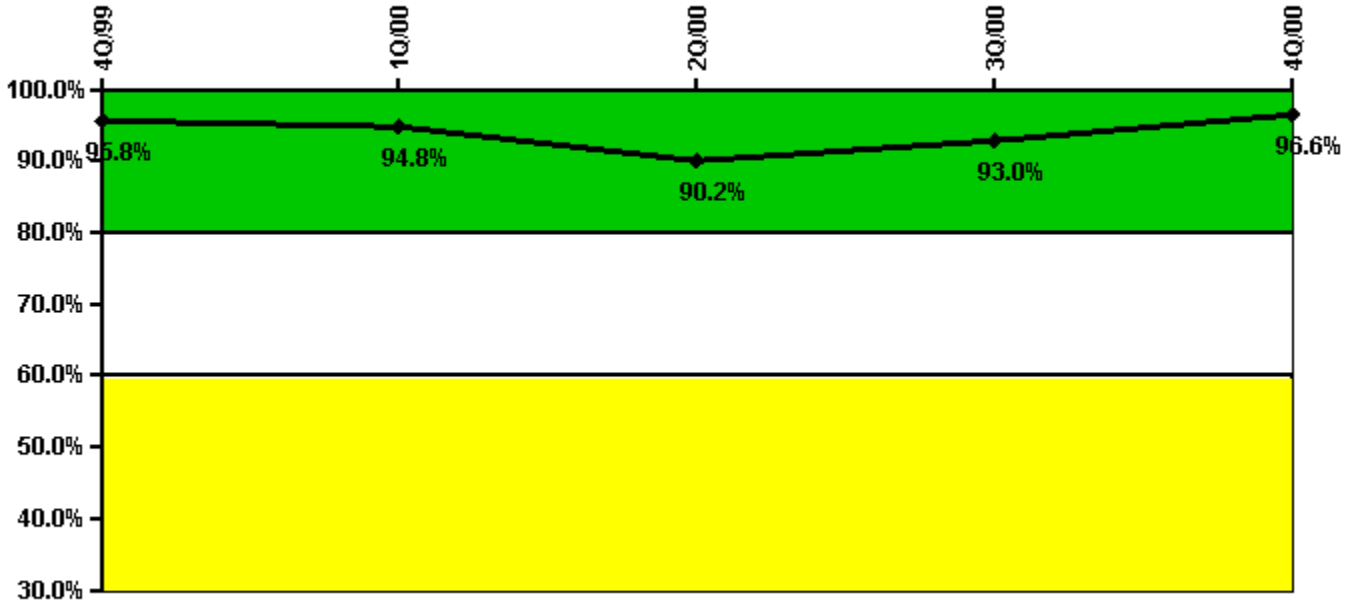
2Q/00: A self-assessment of this performance indicator identified that statistics for non-licensed operator job performance measures used to qualify ERO communicators were not included in the data for third and fourth quarters of 1999 and first, third, and fourth quarters of 2000. Correcting this error changes the indicator values from GREEN to WHITE for the fourth quarter 1999 and all quarters of 2000.

1Q/00: Some data on the initial submittal was not correct. The corrected data has been provided with this submittal. A self-assessment of this performance indicator identified that statistics for non-licensed operator job performance measures used to qualify ERO communicators were not included in the data for third and fourth quarters of 1999 and first, third, and fourth quarters of 2000. Correcting this error changes the indicator values from GREEN to WHITE for the fourth quarter 1999 and all quarters of 2000.

4Q/99: A self-assessment of this performance indicator identified that statistics for non-licensed operator job performance measures used to qualify ERO communicators were not included in the data for third and fourth quarters of 1999 and first, third, and fourth quarters of 2000. Correcting this error changes the indicator values from GREEN to WHITE for the fourth quarter 1999 and all quarters of 2000.

3Q/99: A self-assessment of this performance indicator identified that statistics for non-licensed operator job performance measures used to qualify ERO communicators were not included in the data for third and fourth quarters of 1999 and first, third, and fourth quarters of 2000. Correcting this error changes the indicator values from GREEN to WHITE for the fourth quarter 1999 and all quarters of 2000.

ERO Drill Participation



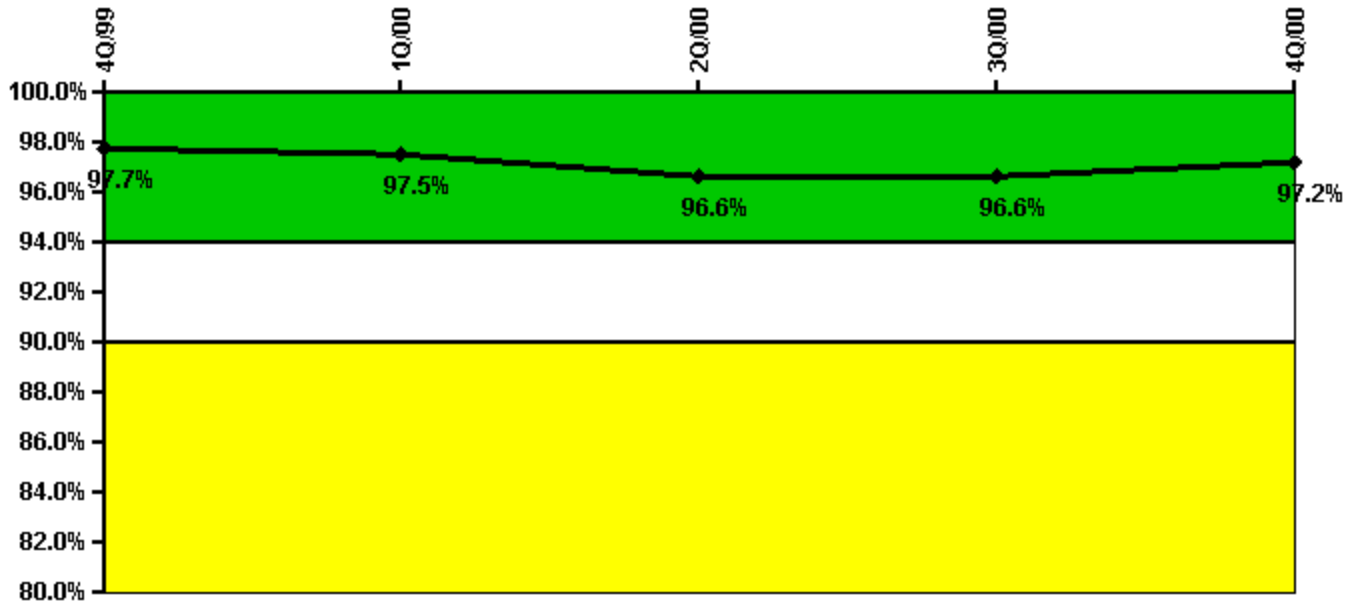
Thresholds: White < 80.0% Yellow < 60.0%

Notes

| ERO Drill Participation | 4Q/99 | 1Q/00 | 2Q/00 | 3Q/00 | 4Q/00 |
|-----------------------------|--------------|--------------|--------------|--------------|--------------|
| Participating Key personnel | 91.0 | 91.0 | 83.0 | 80.0 | 84.0 |
| Total Key personnel | 95.0 | 96.0 | 92.0 | 86.0 | 87.0 |
| | | | | | |
| Indicator value | 95.8% | 94.8% | 90.2% | 93.0% | 96.6% |

Licensee Comments: none

Alert & Notification System



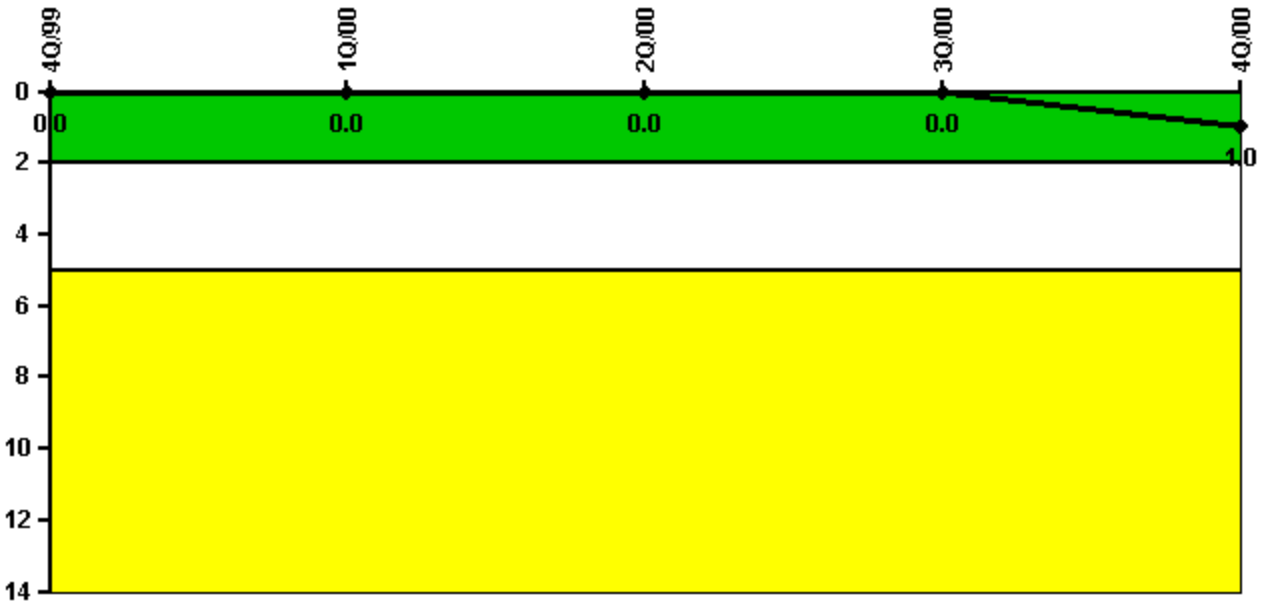
Thresholds: White < 94.0% Yellow < 90.0%

Notes

| Alert & Notification System | 4Q/99 | 1Q/00 | 2Q/00 | 3Q/00 | 4Q/00 |
|-----------------------------|-------|-------|-------|-------|-------|
| Successful siren-tests | 127 | 129 | 124 | 130 | 130 |
| Total sirens-tests | 132 | 132 | 132 | 132 | 132 |
| | | | | | |
| Indicator value | 97.7% | 97.5% | 96.6% | 96.6% | 97.2% |

Licensee Comments: none

Occupational Exposure Control Effectiveness



Thresholds: White > 2.0 Yellow > 5.0

Notes

| Occupational Exposure Control Effectiveness | 4Q/99 | 1Q/00 | 2Q/00 | 3Q/00 | 4Q/00 |
|---|----------|----------|----------|----------|----------|
| High radiation area occurrences | 0 | 0 | 0 | 0 | 1 |
| Very high radiation area occurrences | 0 | 0 | 0 | 0 | 0 |
| Unintended exposure occurrences | 0 | 0 | 0 | 0 | 0 |
| Indicator value | 0 | 0 | 0 | 0 | 1 |

Licensee Comments: none

RETS/ODCM Radiological Effluent



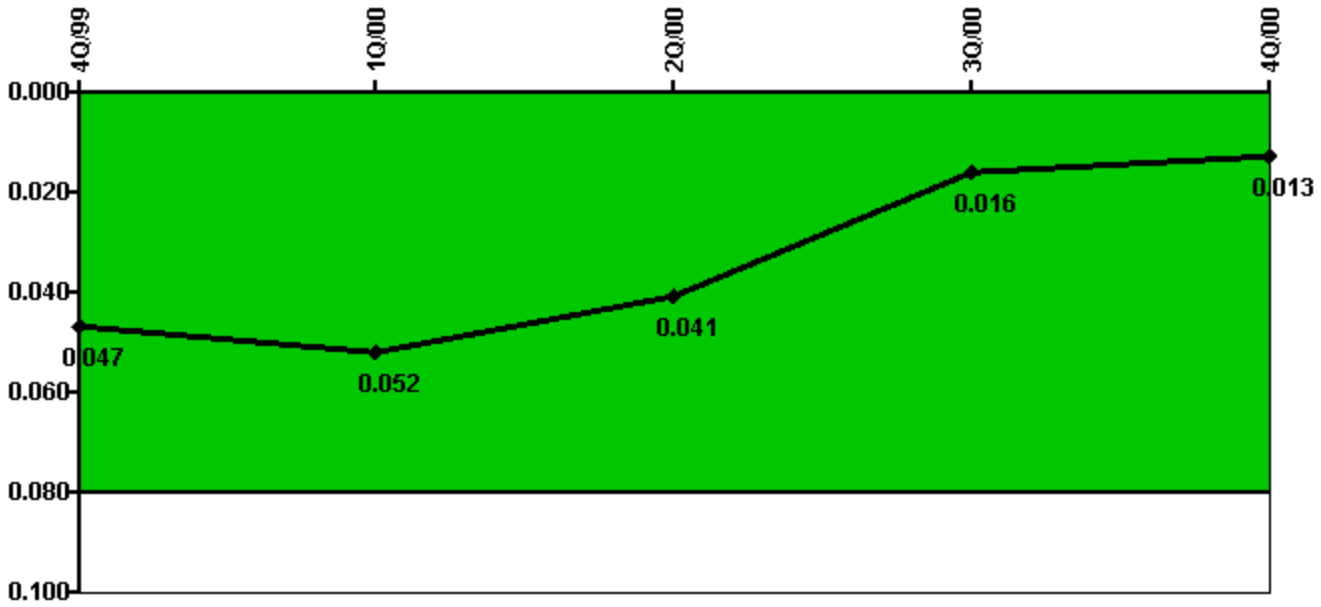
Thresholds: White > 1.0 Yellow > 3.0

Notes

| RETS/ODCM Radiological Effluent | 4Q/99 | 1Q/00 | 2Q/00 | 3Q/00 | 4Q/00 |
|---------------------------------|-------|-------|-------|-------|-------|
| RETS/ODCM occurrences | 0 | 0 | 0 | 0 | 0 |
| | | | | | |
| Indicator value | 0 | 0 | 0 | 0 | 0 |

Licensee Comments: none

Protected Area Security Performance Index



Thresholds: White > 0.080

Notes

| Protected Area Security Performance Index | 4Q/99 | 1Q/00 | 2Q/00 | 3Q/00 | 4Q/00 |
|---|--------------|--------------|--------------|--------------|--------------|
| IDS compensatory hours | 55.00 | 204.00 | 44.90 | 32.30 | 13.10 |
| CCTV compensatory hours | 26.6 | 32.3 | 0 | 3.9 | 0 |
| IDS normalization factor | 1.60 | 1.60 | 1.60 | 1.60 | 1.60 |
| CCTV normalization factor | 1.0 | 1.0 | 1.0 | 1.0 | 1.0 |
| | | | | | |
| Index Value | 0.047 | 0.052 | 0.041 | 0.016 | 0.013 |

Licensee Comments: none

Personnel Screening Program



Thresholds: White > 2.0 Yellow > 5.0

Notes

| Personnel Screening Program | 4Q/99 | 1Q/00 | 2Q/00 | 3Q/00 | 4Q/00 |
|-----------------------------|-------|-------|-------|-------|-------|
| Program failures | 0 | 0 | 0 | 0 | 0 |
| | | | | | |
| Indicator value | 0 | 0 | 0 | 0 | 0 |

Licensee Comments: none

FFD/Personnel Reliability



Thresholds: White > 2.0 Yellow > 5.0

Notes

| FFD/Personnel Reliability | 4Q/99 | 1Q/00 | 2Q/00 | 3Q/00 | 4Q/00 |
|---------------------------|-------|-------|-------|-------|-------|
| Program Failures | 0 | 0 | 0 | 0 | 0 |
| | | | | | |
| Indicator value | 0 | 0 | 0 | 0 | 0 |

Licensee Comments: none

▲ [PI Summary](#) | [Inspection Findings Summary](#) | [Action Matrix Summary](#) | [Reactor Oversight Process](#)

Last Modified: March 28, 2002