

### San Onofre 3

#### 2Q/2000 Performance Indicators

Licensee's General Comments: none

#### Unplanned Scrams per 7000 Critical Hrs



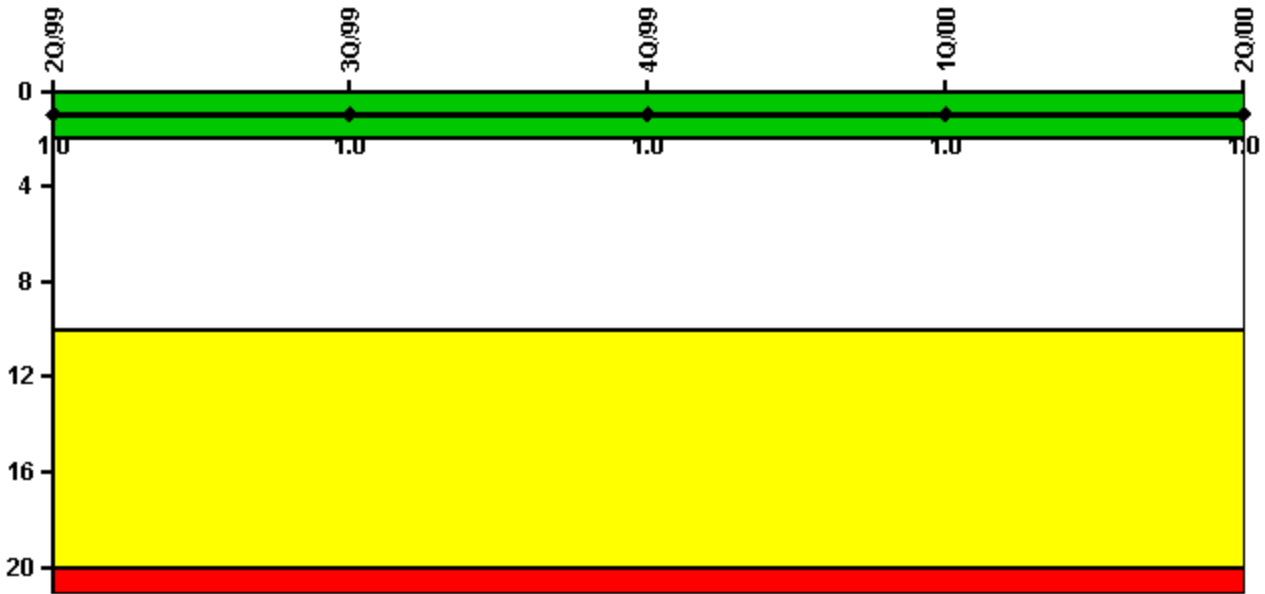
Thresholds: White > 3.0 Yellow > 6.0 Red > 25.0

#### Notes

Unplanned Scrams per 7000 Critical Hrs	2Q/99	3Q/99	4Q/99	1Q/00	2Q/00
Unplanned scrams	2.0	0	0	0	0
Critical hours	1252.8	2208.0	2209.0	2184.0	2183.0
<b>Indicator value</b>	<b>1.8</b>	<b>1.8</b>	<b>1.8</b>	<b>1.8</b>	<b>0</b>

Licensee Comments: none

### Scrams with Loss of Normal Heat Removal



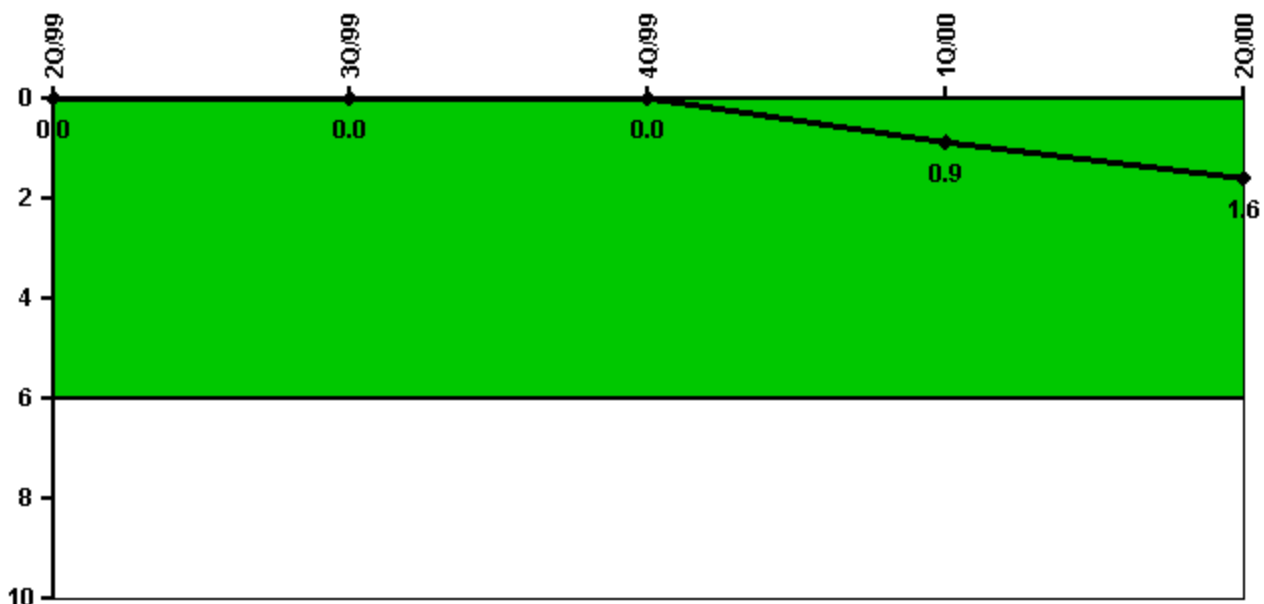
Thresholds: White > 2.0 Yellow > 10.0 Red > 20.0

#### Notes

Scrams with Loss of Normal Heat Removal	2Q/99	3Q/99	4Q/99	1Q/00	2Q/00
Scrams	1.0	0	0	0	0
Indicator value	1.0	1.0	1.0	1.0	1.0

Licensee Comments: none

### Unplanned Power Changes per 7000 Critical Hrs



Thresholds: White > 6.0

#### Notes

Unplanned Power Changes per 7000 Critical Hrs	2Q/99	3Q/99	4Q/99	1Q/00	2Q/00
Unplanned power changes	0	0	0	1.0	1.0
Critical hours	1252.8	2208.0	2209.0	2184.0	2183.0
<b>Indicator value</b>	<b>0</b>	<b>0</b>	<b>0</b>	<b>0.9</b>	<b>1.6</b>

Licensee Comments: none

### Safety System Unavailability, Emergency AC Power



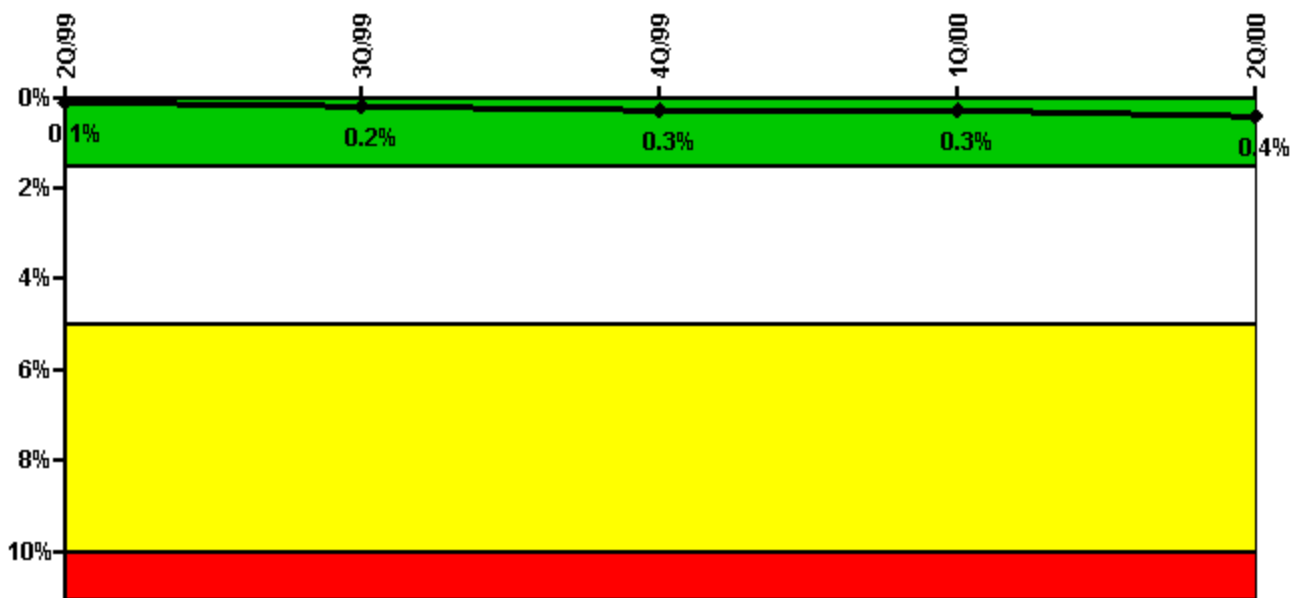
Thresholds: White > 2.5% Yellow > 5.0% Red > 10.0%

#### Notes

Safety System Unavailability, Emergency AC Power	2Q/99	3Q/99	4Q/99	1Q/00	2Q/00
<b>Train 1</b>					
Planned unavailable hours	17.40	4.60	23.80	3.20	2.35
Unplanned unavailable hours	0	0	0	0	0
Fault exposure hours	0	0	0	0	0
Effective Reset hours	0	0	0	0	0
Required hours	2183.00	2208.00	2209.00	2184.00	2183.00
<b>Train 2</b>					
Planned unavailable hours	1.10	38.60	0	28.00	2.05
Unplanned unavailable hours	0.50	25.00	0	0	0
Fault exposure hours	69.20	0	0	0	0
Effective Reset hours	0	0	0	0	0
Required hours	2183.00	2208.00	2209.00	2184.00	2183.00
<b>Indicator value</b>	<b>0.5%</b>	<b>0.6%</b>	<b>0.6%</b>	<b>0.6%</b>	<b>0.6%</b>

Licensee Comments: none

### Safety System Unavailability, High Pressure Injection System (HPSI)



Thresholds: White > 1.5% Yellow > 5.0% Red > 10.0%

**Notes**

Safety System Unavailability, High Pressure Injection System (HPSI)	2Q/99	3Q/99	4Q/99	1Q/00	2Q/00
<b>Train 1</b>					
Planned unavailable hours	0	80.20	18.10	6.60	9.92
Unplanned unavailable hours	0	0	0	0	0
Fault exposure hours	0	0	0	0	0
Effective Reset hours	0	0	0	0	0
Required hours	1253.00	2208.00	2209.00	2184.00	2183.00
<b>Train 2</b>					
Planned unavailable hours	0	0	0	1.70	14.78
Unplanned unavailable hours	0	0	0	0.70	48.00
Fault exposure hours	0	0	0	0	0
Effective Reset hours	0	0	0	0	0
Required hours	1253.00	2208.00	2209.00	2184.00	2183.00
<b>Indicator value</b>	<b>0.1%</b>	<b>0.2%</b>	<b>0.3%</b>	<b>0.3%</b>	<b>0.4%</b>

Licensee Comments: none

### Safety System Unavailability, Heat Removal System (AFW)



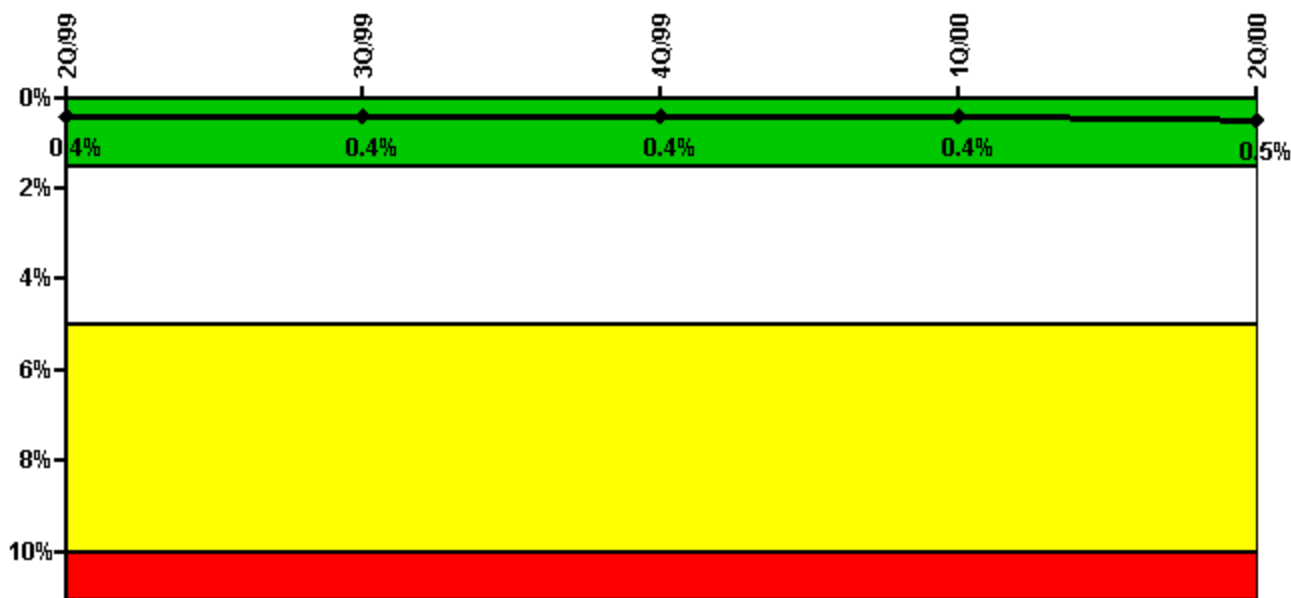
Thresholds: White > 2.0% Yellow > 6.0% Red > 12.0%

#### Notes

Safety System Unavailability, Heat Removal System (AFW)	2Q/99	3Q/99	4Q/99	1Q/00	2Q/00
<b>Train 1</b>					
Planned unavailable hours	0	49.50	25.50	21.90	43.20
Unplanned unavailable hours	0	0	0	0	0
Fault exposure hours	0	0	0	0	0
Effective Reset hours	0	0	0	0	0
Required hours	1253.00	2208.00	2209.00	2184.00	2183.00
<b>Train 2</b>					
Planned unavailable hours	0	46.20	0	0	0
Unplanned unavailable hours	0	0	0	0	0
Fault exposure hours	0	0	0	0	0
Effective Reset hours	0	0	0	0	0
Required hours	1253.00	2208.00	2209.00	2184.00	2183.00
<b>Train 3</b>					
Planned unavailable hours	17.90	0	59.10	0	0
Unplanned unavailable hours	0	0	0	0	0
Fault exposure hours	0	0	0	0	0
Effective Reset hours	0	0	0	0	0
Required hours	1253.00	2208.00	2209.00	2184.00	2183.00
<b>Indicator value</b>	<b>0.7%</b>	<b>0.8%</b>	<b>0.9%</b>	<b>0.9%</b>	<b>0.9%</b>

Licensee Comments: none

### Safety System Unavailability, Residual Heat Removal System



Thresholds: White > 1.5% Yellow > 5.0% Red > 10.0%

#### Notes

Safety System Unavailability, Residual Heat Removal System	2Q/99	3Q/99	4Q/99	1Q/00	2Q/00
<b>Train 1</b>					
Planned unavailable hours	0	0	0	14.20	6.58
Unplanned unavailable hours	0	0	0	0	0
Fault exposure hours	0	0	0	0	0
Effective Reset hours	0	0	0	0	0
Required hours	2183.00	2208.00	2209.00	2184.00	2183.00
<b>Train 2</b>					
Planned unavailable hours	0	34.70	0	0	14.43
Unplanned unavailable hours	0	0	0	0.70	48.00
Fault exposure hours	0	0	0	0	0
Effective Reset hours	0	0	0	0	0
Required hours	2183.00	2208.00	2209.00	2184.00	2183.00
<b>Train 3</b>					
Planned unavailable hours	0	0	0	14.20	0
Unplanned unavailable hours	0	0	0	0	0
Fault exposure hours	0	0	0	0	0
Effective Reset hours	0	0	0	0	0
Required hours	2183.00	2208.00	2209.00	2184.00	0
<b>Train 4</b>					
Planned unavailable hours	0	34.70	0	0	0
Unplanned unavailable hours	0	0	0	0.70	0
Fault exposure hours	0	0	0	0	0
Effective Reset hours	0	0	0	0	0
Required hours	2183.00	2208.00	2209.00	2184.00	0
<b>Indicator value</b>	<b>0.4%</b>	<b>0.4%</b>	<b>0.4%</b>	<b>0.4%</b>	<b>0.5%</b>

Licensee Comments:

2Q/00: San Onofre defines RHR as Containment Spray in Modes 1-3, and Shutdown Cooling in Modes 4-6, per the current FAQ for CE Plant RHR Systems. We have chosen to reenter the 2 train historical data in trains 3 and 4 as our method of supporting this new reporting.

1Q/00: San Onofre defines RHR as Containment Spray in Modes 1-3, and Shutdown Cooling in Modes 4-6. This is consistent with the CE Plant White Paper currently under consideration by the NRC.

4Q/99: This historical information represents the data submitted to WANO. RHR Scope for CE Plants is under industry review. For San Onofre,  $RHR = LPSI + SDC + CS$

3Q/99: This historical information represents the data submitted to WANO. RHR Scope for CE Plants is under industry review. For San Onofre,  $RHR = LPSI + SDC + CS$

2Q/99: This historical information represents the data submitted to WANO. RHR Scope for CE Plants is under industry review. For San Onofre,  $RHR = LPSI + SDC + CS$

1Q/99: This historical information represents the data submitted to WANO. RHR Scope for CE Plants is under industry review. For San Onofre,  $RHR = LPSI + SDC + CS$

4Q/98: This historical information represents the data submitted to WANO. RHR Scope for CE Plants is under industry review. For San Onofre,  $RHR = LPSI + SDC + CS$

3Q/98: This historical information represents the data submitted to WANO. RHR Scope for CE Plants is under industry review. For San Onofre,  $RHR = LPSI + SDC + CS$

2Q/98: This historical information represents the data submitted to WANO. RHR Scope for CE Plants is under industry review. For San Onofre,  $RHR = LPSI + SDC + CS$

1Q/98: This historical information represents the data submitted to WANO. RHR Scope for CE Plants is under industry review. For San Onofre,  $RHR = LPSI + SDC + CS$

4Q/97: This historical information represents the data submitted to WANO. RHR Scope for CE Plants is under industry review. For San Onofre,  $RHR = LPSI + SDC + CS$

3Q/97: This historical information represents the data submitted to WANO. RHR Scope for CE Plants is under industry review. For San Onofre,  $RHR = LPSI + SDC + CS$

2Q/97: This historical information represents the data submitted to WANO. RHR Scope for CE Plants is under industry review. For San Onofre,  $RHR = LPSI + SDC + CS$

1Q/97: This historical information represents the data submitted to WANO. RHR Scope for CE Plants is under industry review. For San Onofre,  $RHR = LPSI + SDC + CS$

4Q/96: This historical information represents the data submitted to WANO. RHR Scope for CE Plants is under industry review. For San Onofre,  $RHR = LPSI + SDC + CS$

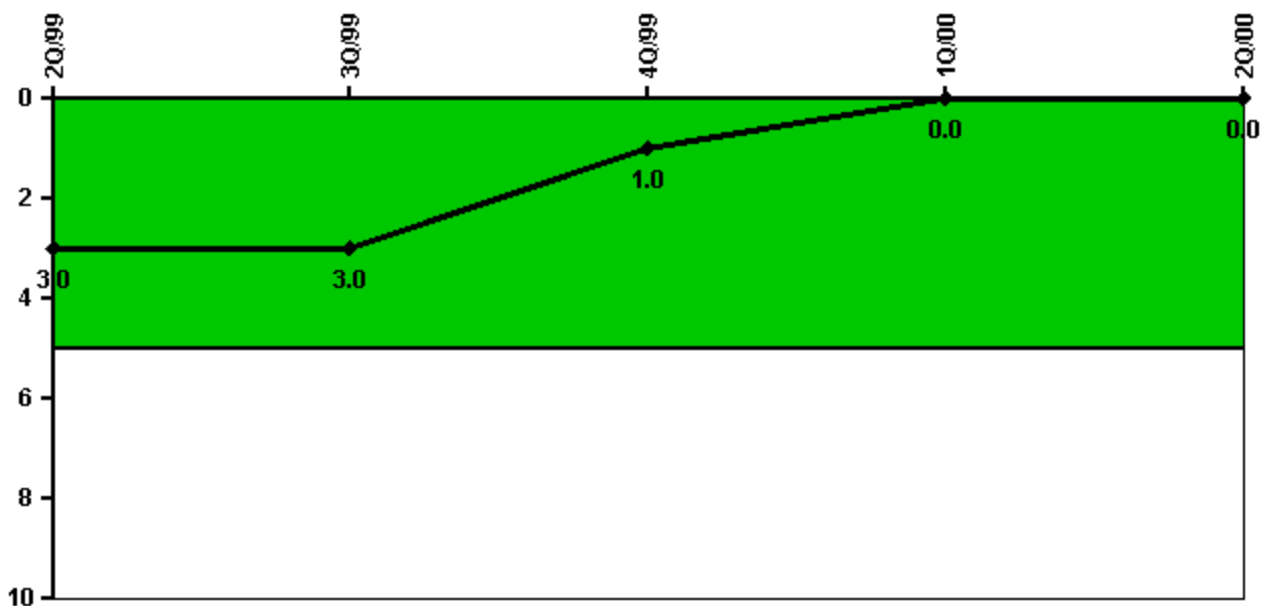
3Q/96: This historical information represents the data submitted to WANO. RHR Scope for CE Plants is under industry review. For San Onofre,  $RHR = LPSI + SDC + CS$

2Q/96: This historical information represents the data submitted to WANO. RHR Scope for CE Plants is under industry review. For San Onofre,  $RHR = LPSI + SDC + CS$

---



### Safety System Functional Failures (PWR)



Thresholds: White > 5.0

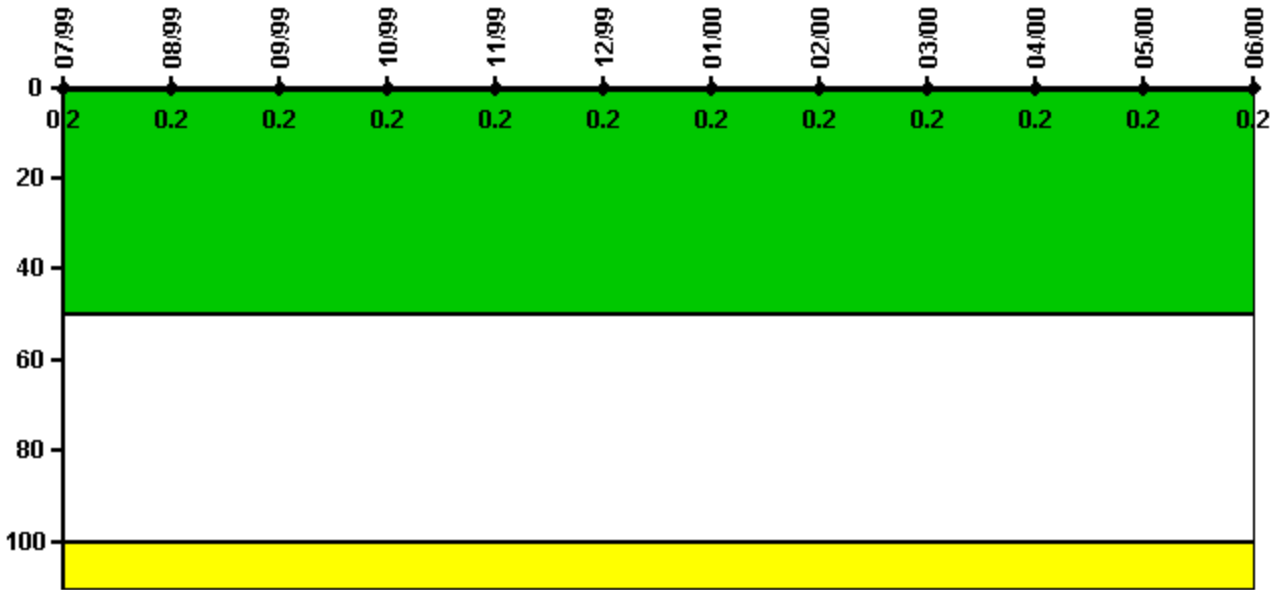
#### Notes

Safety System Functional Failures (PWR)	2Q/99	3Q/99	4Q/99	1Q/00	2Q/00
Safety System Functional Failures	0	0	0	0	0
Indicator value	3	3	1	0	0

Licensee Comments:

1Q/99: One SSFF occurred this quarter

### Reactor Coolant System Activity



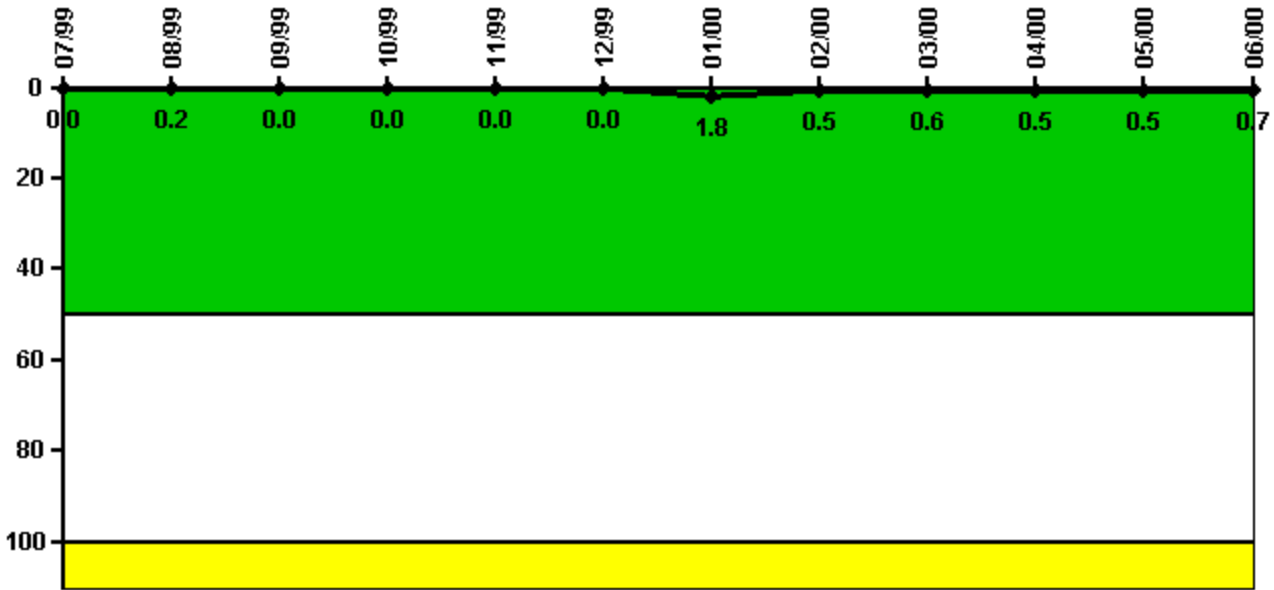
Thresholds: White > 50.0 Yellow > 100.0

#### Notes

Reactor Coolant System Activity	7/99	8/99	9/99	10/99	11/99	12/99	1/00	2/00	3/00	4/00	5/00	6/00
Maximum activity	0.001600	0.001700	0.001900	0.001700	0.001800	0.002000	0.001800	0.001900	0.001900	0.001990	0.001980	0.001990
Technical specification limit	1.0	1.0	1.0	1.0	1.0	1.0	1.0	1.0	1.0	1.0	1.0	1.0
Indicator value	0.2	0.2	0.2	0.2	0.2	0.2	0.2	0.2	0.2	0.2	0.2	0.2

Licensee Comments: none

### Reactor Coolant System Leakage



Thresholds: White > 50.0 Yellow > 100.0

**Notes**

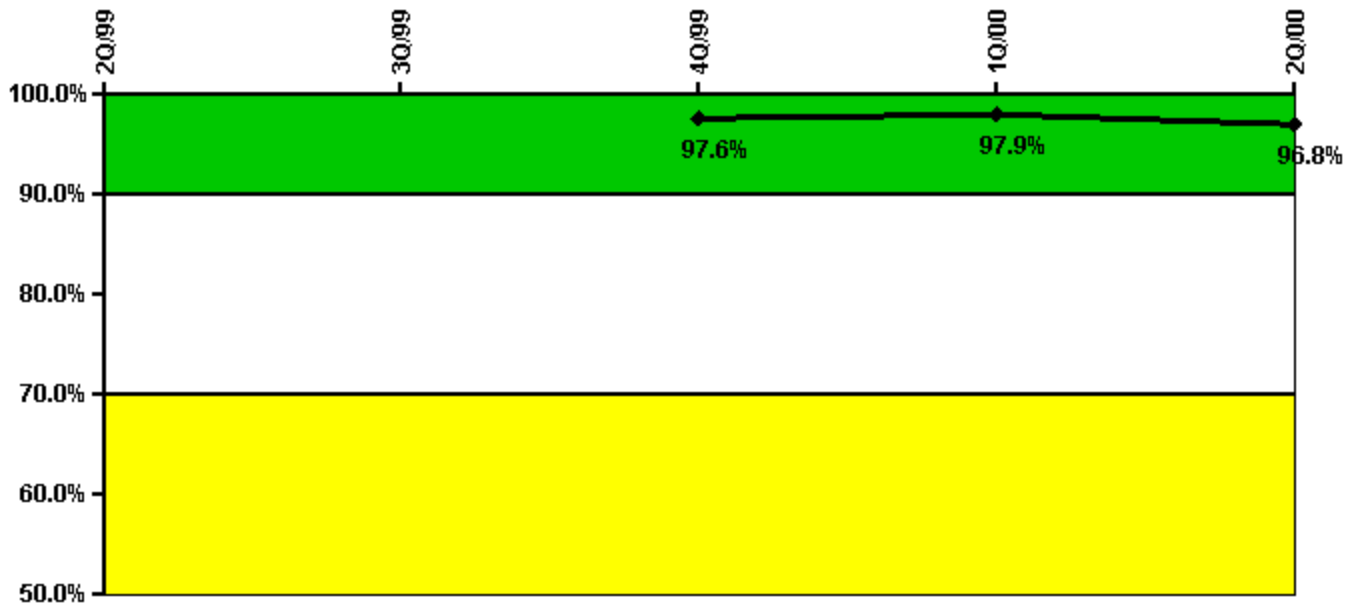
Reactor Coolant System Leakage	7/99	8/99	9/99	10/99	11/99	12/99	1/00	2/00	3/00	4/00	5/00	6/00
Maximum leakage	0	0.020	0	0	0	0	0.180	0.050	0.060	0.050	0.050	0.070
Technical specification limit	10.0	10.0	10.0	10.0	10.0	10.0	10.0	10.0	10.0	10.0	10.0	10.0
Indicator value	0	0.2	0	0	0	0	1.8	0.5	0.6	0.5	0.5	0.7

Licensee Comments:

3/00: Q1 2000 data revised to include instrument uncertainties.

3/00: Q1 2000 data revised to include instrument uncertainties.

### Drill/Exercise Performance



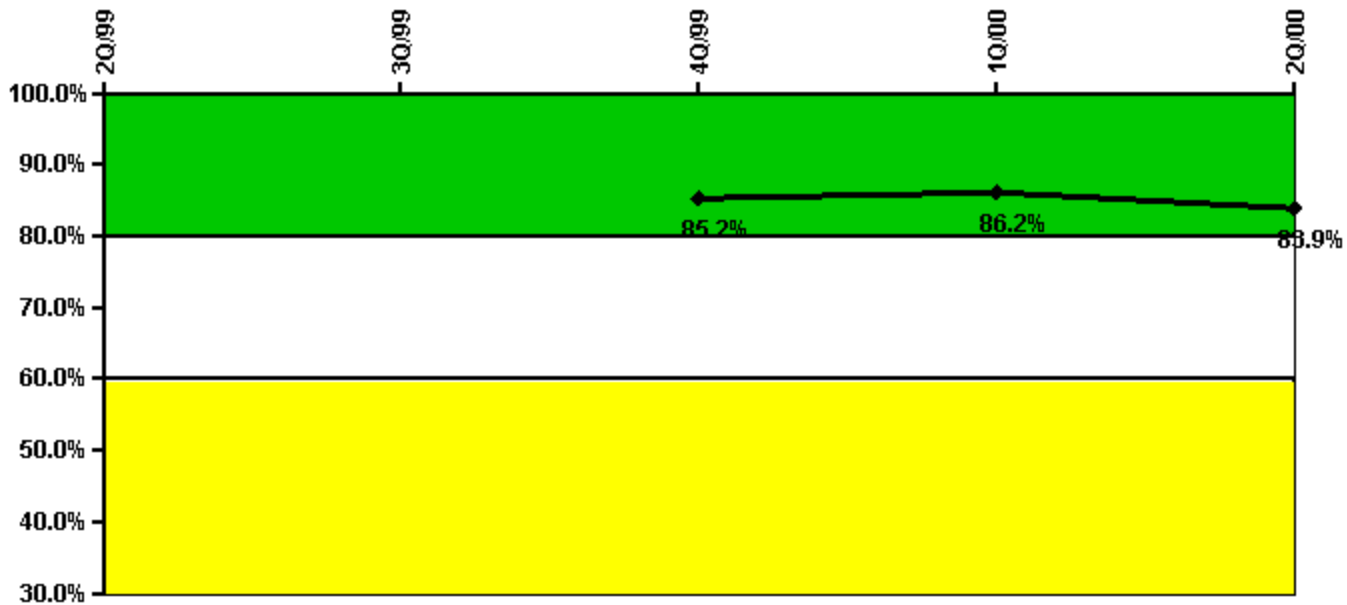
Thresholds: White < 90.0% Yellow < 70.0%

#### Notes

Drill/Exercise Performance	2Q/99	3Q/99	4Q/99	1Q/00	2Q/00
Successful opportunities	0	17.0	22.0	11.0	6.0
Total opportunities	0	18.0	22.0	11.0	7.0
Indicator value			97.6%	97.9%	96.8%

Licensee Comments: none

### ERO Drill Participation



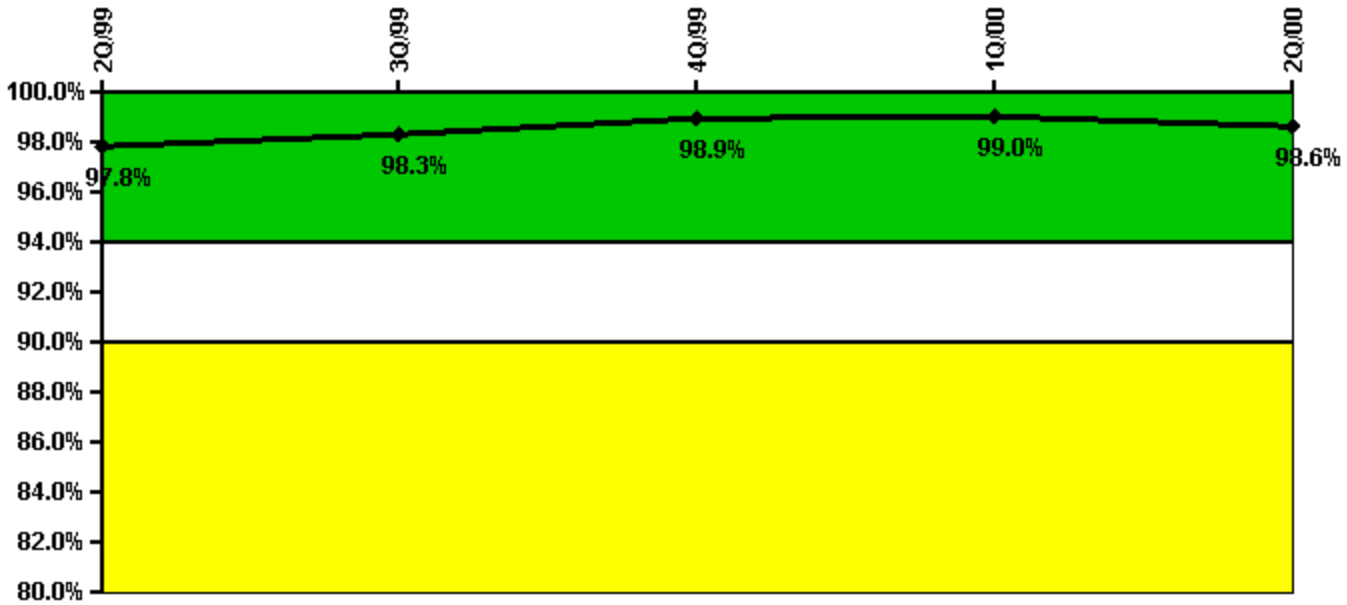
Thresholds: White < 80.0% Yellow < 60.0%

#### Notes

ERO Drill Participation	2Q/99	3Q/99	4Q/99	1Q/00	2Q/00
Participating Key personnel			46.0	50.0	47.0
Total Key personnel			54.0	58.0	56.0
Indicator value			85.2%	86.2%	83.9%

Licensee Comments: none

### Alert & Notification System



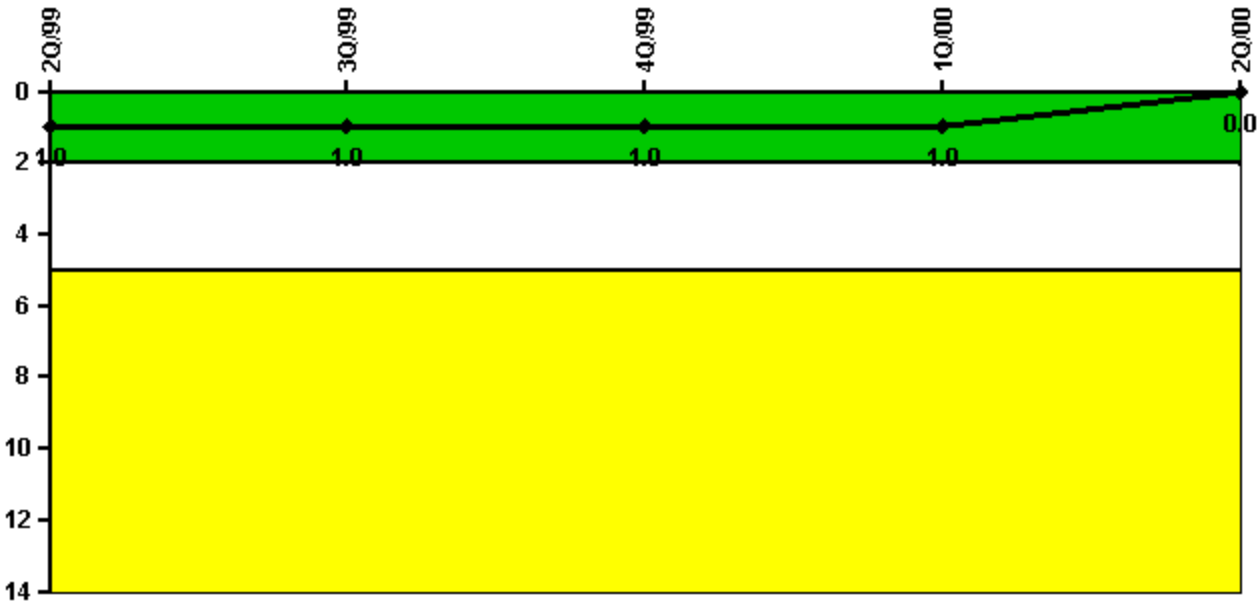
Thresholds: White < 94.0% Yellow < 90.0%

#### Notes

Alert & Notification System	2Q/99	3Q/99	4Q/99	1Q/00	2Q/00
Successful siren-tests	344	438	341	385	333
Total sirens-tests	347	441	343	392	343
Indicator value	97.8%	98.3%	98.9%	99.0%	98.6%

Licensee Comments: none

### Occupational Exposure Control Effectiveness



Thresholds: White > 2.0 Yellow > 5.0

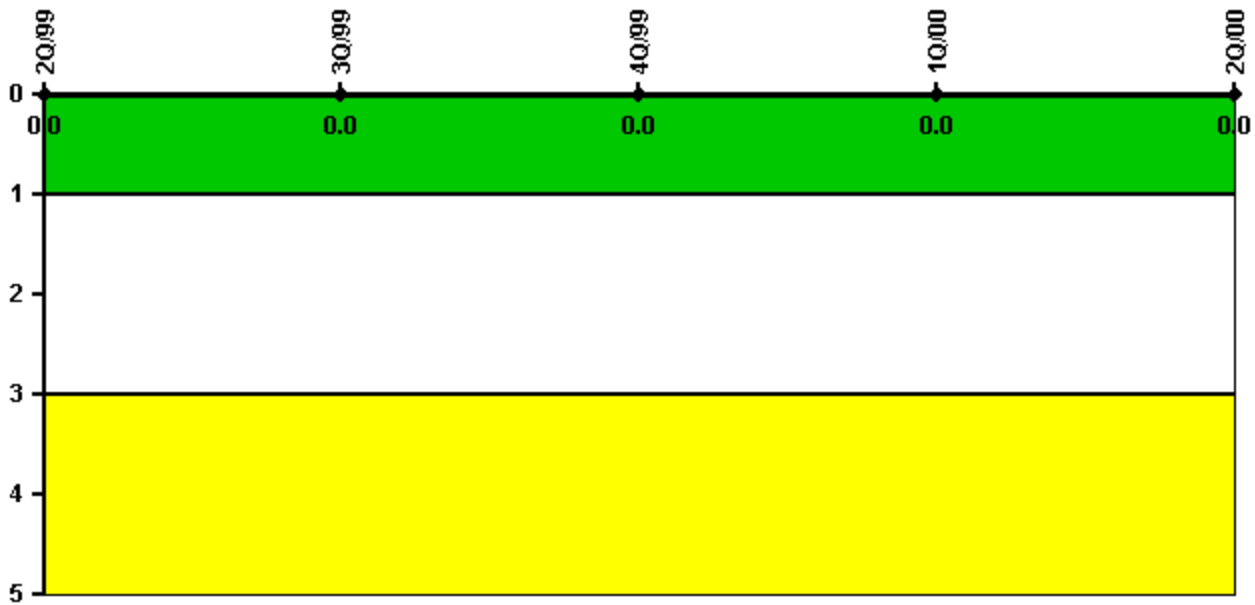
#### Notes

Occupational Exposure Control Effectiveness	2Q/99	3Q/99	4Q/99	1Q/00	2Q/00
High radiation area occurrences	0	0	0	0	0
Very high radiation area occurrences	0	0	0	0	0
Unintended exposure occurrences	1	0	0	0	0
<b>Indicator value</b>	<b>1</b>	<b>1</b>	<b>1</b>	<b>1</b>	<b>0</b>

Licensee Comments:

2Q/00: Q2/99 occurrence was at Unit 3.

### RETS/ODCM Radiological Effluent



Thresholds: White > 1.0 Yellow > 3.0

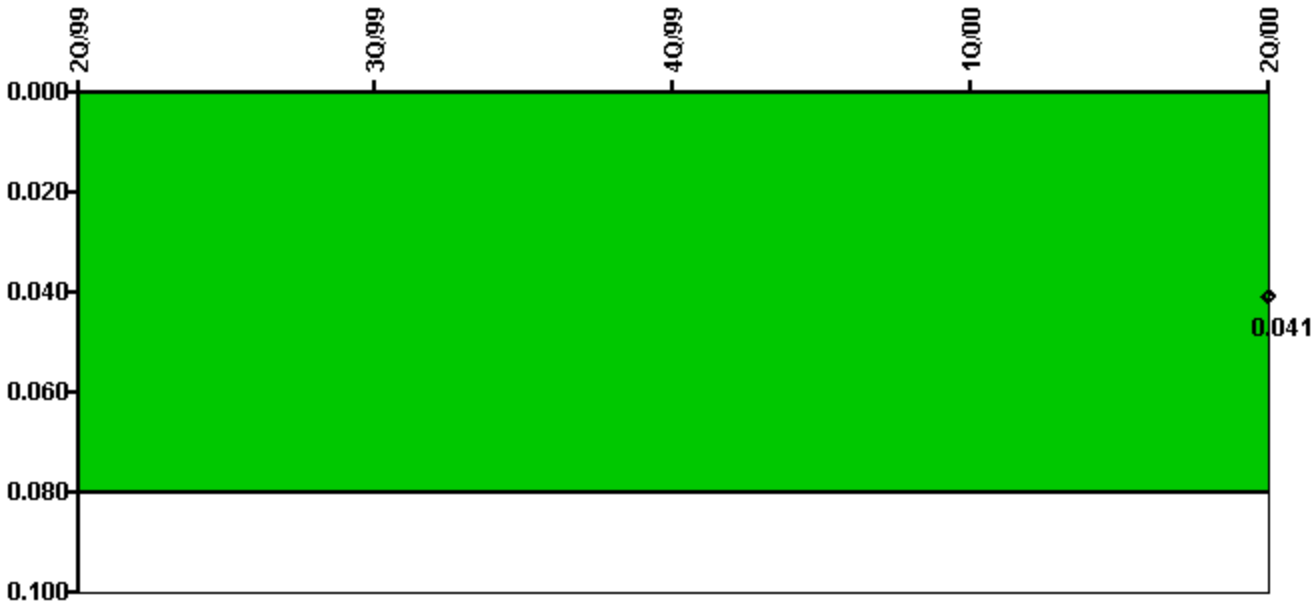
#### Notes

RETS/ODCM Radiological Effluent	2Q/99	3Q/99	4Q/99	1Q/00	2Q/00
RETS/ODCM occurrences	0	0	0	0	0
Indicator value	0	0	0	0	0

Licensee Comments: none



### Protected Area Security Performance Index



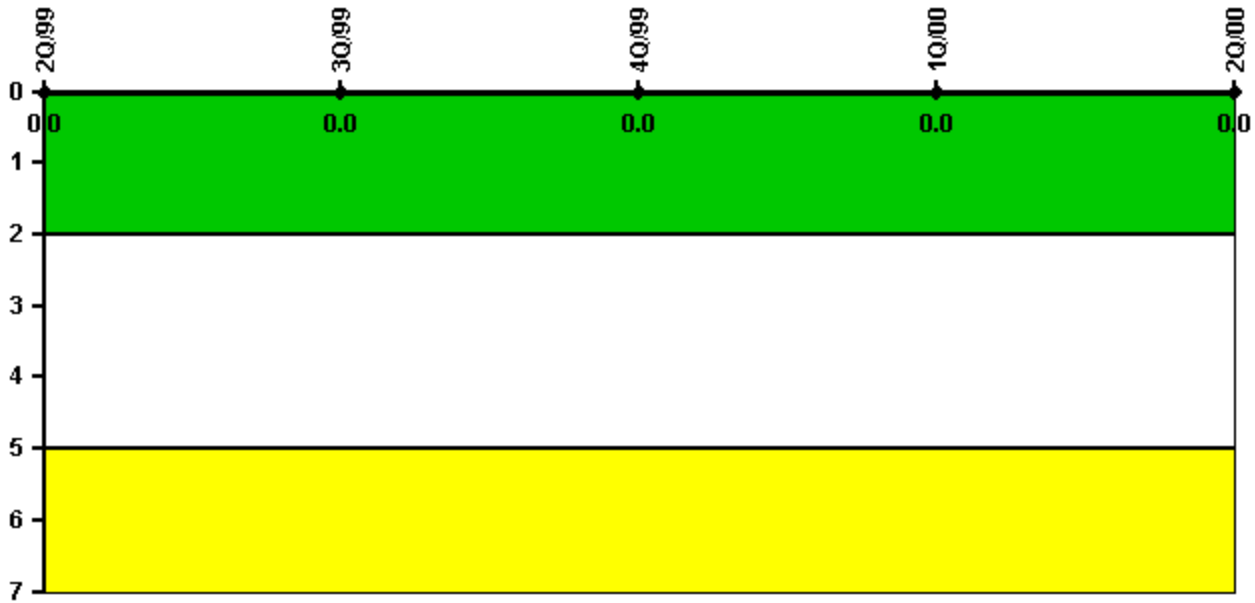
Thresholds: White > 0.080

#### Notes

Protected Area Security Performance Index	2Q/99	3Q/99	4Q/99	1Q/00	2Q/00
IDS compensatory hours		228.20	278.00	247.10	105.40
CCTV compensatory hours		0	20.1	184.3	32.9
IDS normalization factor		1.85	1.80	1.80	1.80
CCTV normalization factor		1.0	1.0	1.0	1.0
<b>Index Value</b>					<b>0.041</b>

Licensee Comments: none

### Personnel Screening Program



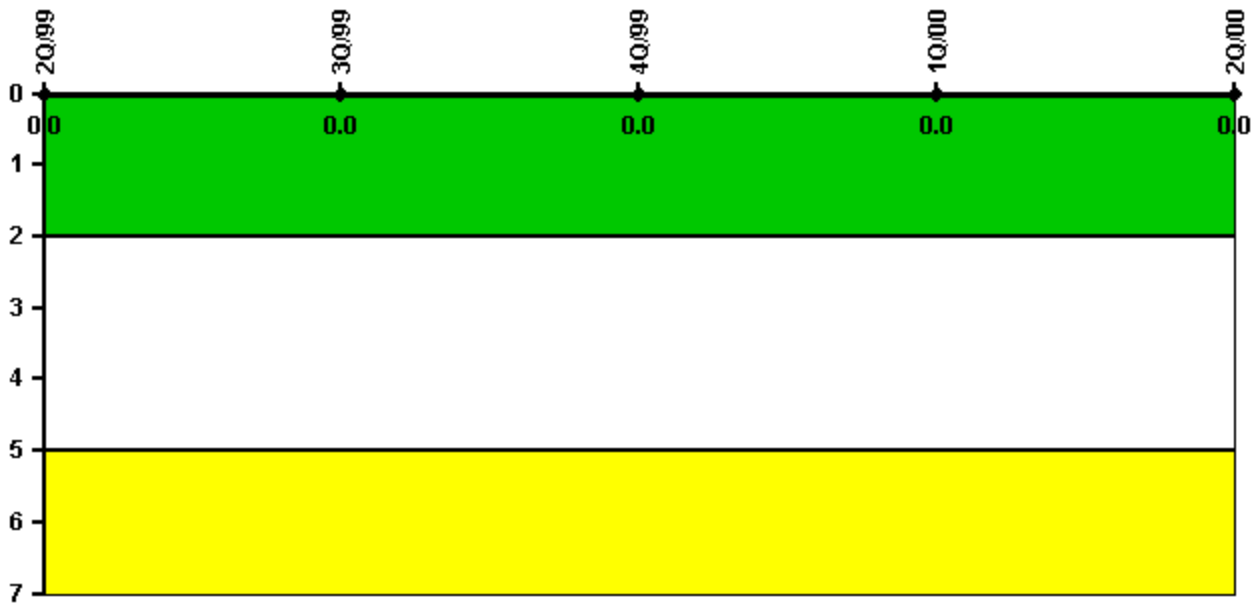
Thresholds: White > 2.0 Yellow > 5.0

#### Notes

Personnel Screening Program	2Q/99	3Q/99	4Q/99	1Q/00	2Q/00
Program failures	0	0	0	0	0
Indicator value	0	0	0	0	0

Licensee Comments: none

### FFD/Personnel Reliability



Thresholds: White > 2.0 Yellow > 5.0

#### Notes

FFD/Personnel Reliability	2Q/99	3Q/99	4Q/99	1Q/00	2Q/00
Program Failures	0	0	0	0	0
Indicator value	0	0	0	0	0

Licensee Comments: none

[PI Summary](#) | [Inspection Findings Summary](#) | [Reactor Oversight Process](#)

Last Modified: April 1, 2002