

SHINE
Medical Technologies

Health. Illuminated.™

SHINE's Progress Toward Developing a Domestic Supply of Mo-99
March 14, 2018

What is SHINE Medical Technologies?

SHINE Medical Technologies is dedicated to being the world leader in the safe, clean, and affordable advanced manufacturing of medical tracers and cancer treatment elements.

SHINE Medical Technologies | 2

SHINE Snapshot

SHINE is building new irradiation and processing infrastructure

- Leading project pursuing new irradiation and processing infrastructure
- Recent developments:
 - Moved headquarters to Janesville
 - Continued hiring
 - Completed construction of Building One
 - Selected Baker Concrete as prime contractor for manufacturing facility
- Leading efforts to establish domestic fission-based isotope supply

SHINE Medical Technologies | 3

New SHINE Headquarters in Janesville, WI

Relocation and expansion

- SHINE outgrew the Monona, WI facility
 - Ribbon cutting in January 2017
 - Approximately 60 employees at the Janesville office
 - 15 new hires expected in the next few months



SHINE Medical Technologies | 7

SHINE Building One

One of the most advanced private nuclear technology facilities in the world

- First building to be built on the SHINE campus
- Will demonstrate actual production equipment
- Schedule
 - Construction complete: Q1 2018
 - Occupancy: Q1 2018
 - FPU Demonstration: Q2 2018
- Beyond the pilot demonstration
 - Employee training facility
 - Developing operating history with equipment
 - State-of-the-art technology development center



SHINE Medical Technologies | 8

Baker Concrete Construction, Inc. – Prime Contractor

Construction team coming together

- Baker Concrete Construction, Inc.
 - Civil firm with nuclear experience
 - Over 45 years of experience
 - Every type of project imaginable
 - Experience in constructing NRC-regulated facilities (URENCO USA)
- Focused, highly-efficient, internal engineering team established
- Sargent & Lundy supplementing structural work
- Enercon supplementing process and licensing work

SHINE Medical Technologies | 9

Production Facility Design

Design for logistical efficiency

- SHINE facility to be built in Janesville, WI
- Approximately 45,000 ft²
- Plant capacity of > 4000 6-day Ci/week
 - Over one-third of global demand
- Eight independent irradiation units
 - Ensures high reliability, flexible production schedule
- Independent hot cell chains further increase reliability and flexibility

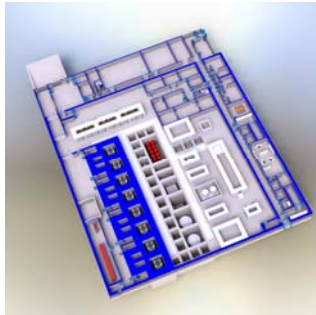


SHINE Medical Technologies | 10

Next Steps

Industry-leading progress

- Construction of the SHINE production facility in 2018
- Current key activities:
 - Construction team selected
 - Preparing operating license application
 - Completing detailed design
 - Negotiating additional supply agreements
- Commercial production in 2020



SHINE Medical Technologies | 11
