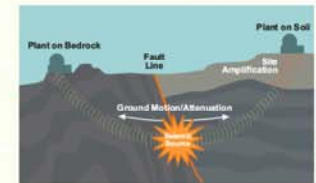
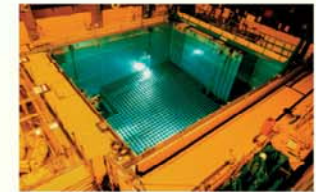
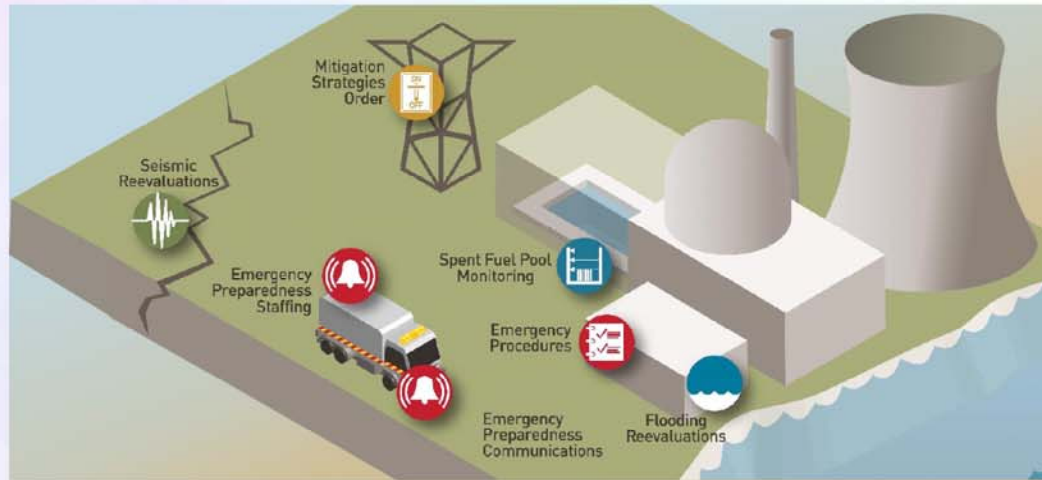




Office of Nuclear Reactor Regulation

Enhancements for the Mitigation of Beyond-Design-Basis Events



- Integrated response provides a holistic approach to assist operators during event
- Strategies and guidelines for beyond-design-basis external events
- Reevaluated seismic and flooding mitigation strategies and guidelines or event-specific approaches
- Strategies and guidelines for the loss of large areas of the plant due to explosions and fires
- Integration with the emergency operating procedures
- Phase-out of requirements for decommissioning reactors to avoid the need for exemptions
- Clarifies regulatory landscape and avoids confusion by removing redundant requirements (orders and license conditions)
- Equipment capable to perform strategies
- Equipment protected from reevaluated seismic and flooding hazards
- Training and qualification for personnel performing activities to be trained and qualified
- Training must be developed using systems approach to training
- Drills to demonstrate transition to, and use one or more of the strategies and guidelines

