

Project Statistics

- Approximately **3,700** construction workers now onsite
- About **4,500** temporary jobs during peak construction
- **600-800** fulltime jobs when plants are operational
- AP1000 design covers **25** acres per unit
- Units 2 and 3 and support structures will cover **240** acres
- Construction uses approximately **1,000** acres

SCE&G VCS

Part 52 Implementation

- Phases of Implementation
 - Pre-construction challenges: what can be done before license issuance
 - Perception of what is considered construction versus fabrication
 - Containment vessel
 - Modules
 - What work is considered pre-construction
 - Excavation
 - Preassembly of components
 - Cooling towers
 - Undergrounds

Part 52 Implementation

- Phases of Implementation
 - Construction Challenges
 - Understand what is the license and design basis
 - A significant amount of construction detail found in DCD
 - Understanding code compliance and Interpretation
 - Depth of constructability reviews
 - Build what is in the license
 - Understanding Tier 1 and 2 *
 - › Determining scope of the application of Tier 2*
 - › Interpretation of figures in the license

Part 52 Implementation

- Phases of Implementation
 - Construction Challenges
 - Determination of need to change license
 - LAR/PAR Process
 - Departures
 - Depth of information required
 - Impacts of change on construction schedule
 - Impacts on the licensee and consortium staff
 - Impacts on the regulator's staff

VCS Units 2 & 3 Site September 2015



Unit 2 Nuclear Island

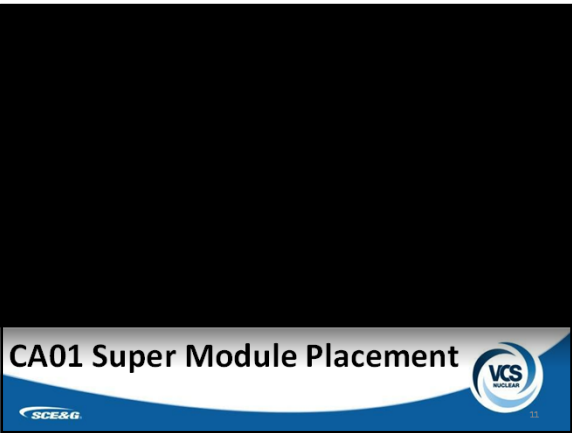


Unit 2 CA01



Unit 2 Nuclear Island and Turbine Building





Unit 2 Shield Building Assembly



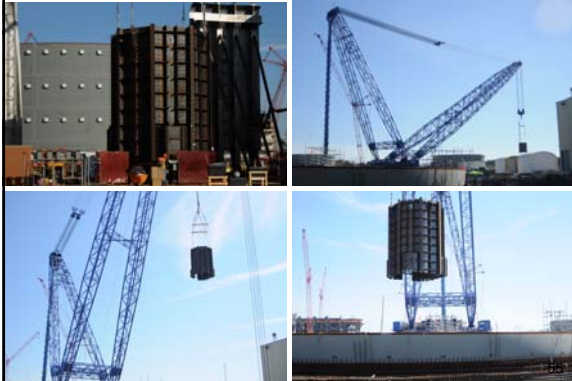
Unit 2 Shield Building with Concrete



Unit 3 Nuclear Island



Unit 3 CA04



Unit 3 Containment CA04



**Unit 2 Reactor Vessel from the
Port of Charleston to V.C.
Summer**



Unit 3 Reactor Vessel Arrival on Site



Interstate Travel



Steam Generator at the Port of Charleston



Unit 3 Pressurizer On-site

