

Vogtle
units 3&4 Nuclear Development

SOUTHERN COMPANY Westinghouse SCL

Vogtle Units 3&4 Regulatory Information Conference

Charles Pierce
Regulatory Affairs Director

March 15, 2012

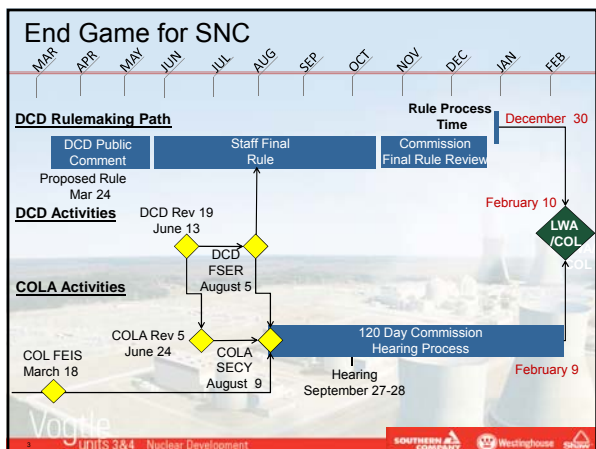
target
ZERO
Every day, every job, safely.

Video

[COL Video](#)

Vogtle
units 3&4 Nuclear Development

SOUTHERN COMPANY Westinghouse SCL



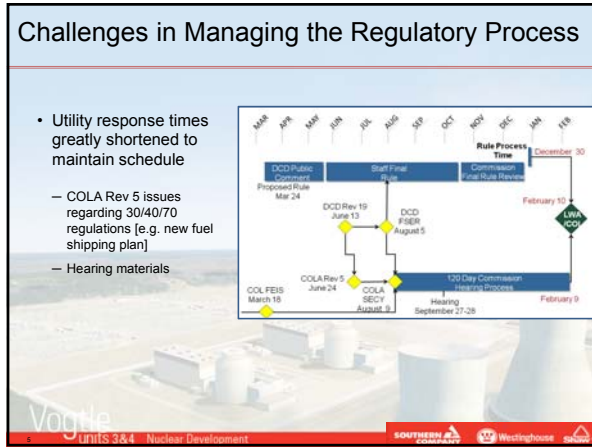
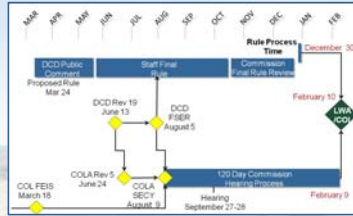
Vogtle 3 and 4 End Game Challenges

- Challenges in managing the regulatory process
- Challenges in preparing for the COL
- Challenges in preparing for construction



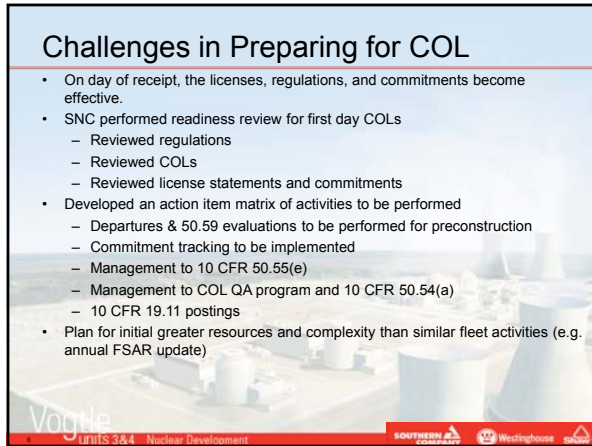
Challenges in Managing the Regulatory Process

- Utility response times greatly shortened to maintain schedule
 - COLA Rev 5 issues regarding 30/40/70 regulations [e.g. new fuel shipping plan]
 - Hearing materials



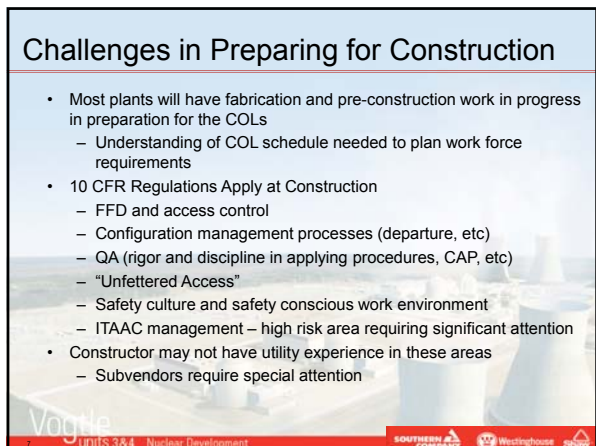
Challenges in Preparing for COL

- On day of receipt, the licenses, regulations, and commitments become effective.
- SNC performed readiness review for first day COLs
 - Reviewed regulations
 - Reviewed COLs
 - Reviewed license statements and commitments
- Developed an action item matrix of activities to be performed
 - Departures & 50.59 evaluations to be performed for preconstruction
 - Commitment tracking to be implemented
 - Management to 10 CFR 50.55(e)
 - Management to COL QA program and 10 CFR 50.54(a)
 - 10 CFR 19.11 postings
- Plan for initial greater resources and complexity than similar fleet activities (e.g. annual FSAR update)



Challenges in Preparing for Construction

- Most plants will have fabrication and pre-construction work in progress in preparation for the COLs
 - Understanding of COL schedule needed to plan work force requirements
- 10 CFR Regulations Apply at Construction
 - FFD and access control
 - Configuration management processes (departure, etc)
 - QA (rigor and discipline in applying procedures, CAP, etc)
 - “Unfettered Access”
 - Safety culture and safety conscious work environment
 - ITAAC management – high risk area requiring significant attention
- Constructor may not have utility experience in these areas
 - Subvendors require special attention





Conclusion

End game activities in managing

Regulatory Process

Preparing for COL receipt

Preparing for construction

requires that utilities resources be focused in all three areas

