

LLW Management at the Department of Energy

*Session on Potential Changes to the U.S. LLW
Regulatory Framework*

**U.S. Nuclear Regulatory Commission
Regulatory Information Conference
Rockville, MD
March 11, 2010**

*Douglas Tonkay
LLW/MLLW Team Leader
Office of Disposal Operations*

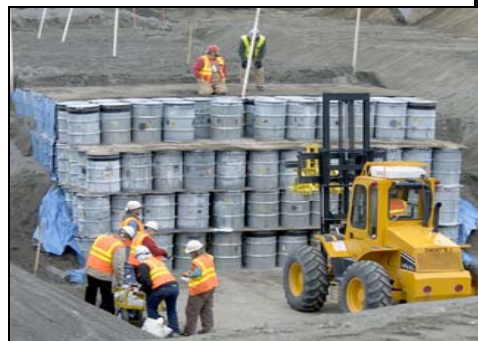


EM Environmental Management

safety ❖ performance ❖ cleanup ❖ closure

DOE's radioactive waste management priorities....

- Continue to manage waste inventories in safe, compliant manner
- Address high risk waste in a cost-effective manner
- Maintain and optimize current disposal capability for future generations
- Develop future disposal capacity in an complex environment
- Promote the development of treatment and disposal alternatives in the commercial sector
- Review current policies and directives
- Provided needed oversight



EM Environmental Management

safety ❖ performance ❖ cleanup ❖ closure

DOE and NRC Waste Classification

DOE Order 435.1

- High-level waste (HLW)
- Transuranic (TRU) waste
- Low-level waste (LLW)

10 CFR Part 61

- High-level waste (HLW)
- Low-level waste (LLW)
 - Greater than Class C
 - Class A, B, and C

Historically, most LLW disposed of in the U.S. was generated by DOE activities; most DOE generated LLW results from decommissioning and site cleanup activities.



DOE and IAEA Waste Classification

DOE Order 435.1

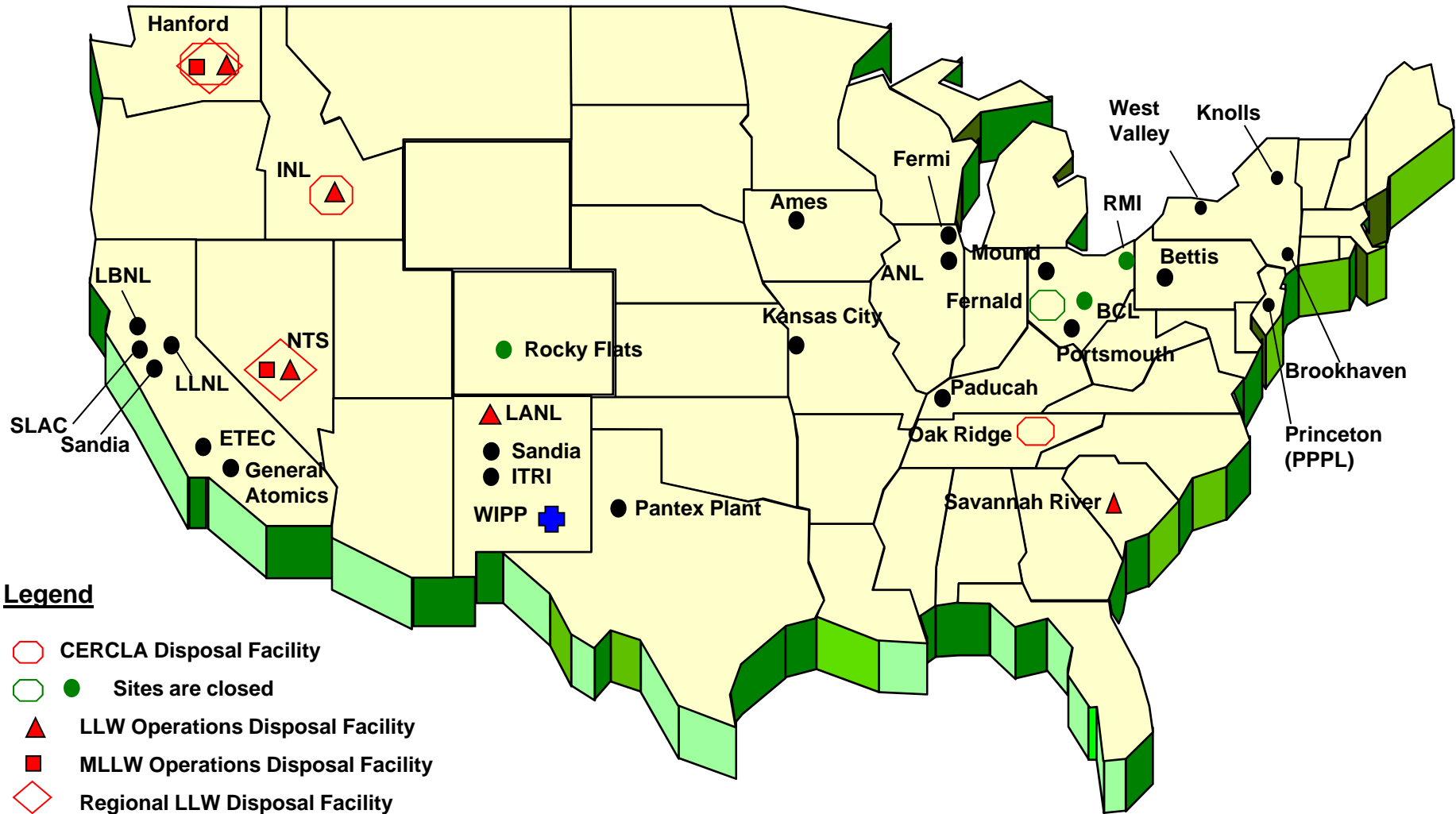
- High-level waste (HLW)
- Transuranic (TRU) waste
- Low-level radioactive waste (LLW)

IAEA GSG-1

- High-level waste (HLW)
- Intermediate level waste (ILW)
- Low-level radioactive waste (LLW)
- Very low level waste (VLLW)
- Very short-lived waste (VSLW)
- Exempt waste



DOE's Waste Disposal Complex



Legend

- ◻ CERCLA Disposal Facility
- ◻ ● Sites are closed
- ▲ LLW Operations Disposal Facility
- MLLW Operations Disposal Facility
- ◊ Regional LLW Disposal Facility
- + Waste Isolation Pilot Plant (WIPP) for TRU disposal
- DOE Generator Site (no on-site disposal facility)

DOE LLW Management Policy

- If practical, disposal on the site at which it is generated
- If on-site disposal is not available, at another DOE disposal facility
- At commercial disposal facilities if compliant, cost effective, and in the best interest of the Department

DOE LLW Management Regulatory Framework

- DOE self-regulates its programs under authority of the Atomic Energy Act of 1954, as amended
 - DOE Orders, Manuals, and Guidance
 - Oversight by Office of Health, Safety, and Security
 - Low-level Radioactive Waste Federal Review Group
- Defense Nuclear Facilities Safety Board provides independent review and advice
- States and EPA have regulatory authority over hazardous waste and clean-up
- DOE operates under 37 Environmental Regulatory Agreements (CERCLA and RCRA) for cleanup with enforceable milestones

DOE Order 435.1, Radioactive Waste Management

- Ensures all DOE radioactive waste is managed in a manner that is protective of worker and public health and safety, and the environment
- Implementation requirements are established in Manual 435.1-1, *Radioactive Waste Management Manual*
 - Includes general responsibilities and requirements
 - Specific requirements documented for HLW, TRU, and LLW
- The Manual is supported by Guidance and Technical Basis (G435.1-1)

2009 Complex-Wide Review Objectives

- Describe the progress made within DOE/NNSA for managing radioactive waste (HLW, TRU, and LLW) over the past decade
- Provide a self-assessment tool for DOE sites and HQ
- Identify radioactive waste management best practices and areas of improvement
- Inform update of DOE Order 435.1
 - Incorporate lessons learned
 - Institutionalize informal guidance documents
 - Address changes in relevant statutes, regulations, and standards
 - Account for advances in technology
 - Address new and emerging DOE needs

Applies to all DOE/NNSA programs that manage radioactive waste



EM Environmental Management

safety ❖ performance ❖ cleanup ❖ closure

www.em.doe.gov

2009 Complex-Wide Review Methodology

- Developed lines of inquiry
- Conducted pilot surveys (proof of process) in June 2009
- Revised lines of inquiry
- Surveyed sites and programs
 - DOE and site contractors provided input
 - Energy Facilities Contractor Group assistance
- Compiled and evaluated results
 - Received 14,000 responses
 - Site input evaluated for successes, best practices, lessons learned, and areas of improvement
 - Complex-wide input evaluated for best practices and areas of improvement
- Drafted report (expected to be final in March/April 2010)



EM *Environmental Management*

safety ❖ performance ❖ cleanup ❖ closure

www.em.doe.gov

Examples of Results – HQs Review

- Best Practices
 - Effective management, planning, and integration of the TRU program
 - Low-Level Waste Disposal Facility Federal Review Group (LFRG) success in developing and implementing a review process for disposal of LLW and TRU waste and HLW Tank closure performance assessments
- Areas of Improvement
 - Improving the effectiveness of the commercial treatment, storage, and disposal exemption process
 - Ensuring performance assessment requirements have been included in the legacy management process for sites being closed
 - Clarifying the radioactive waste management oversight responsibilities of the various DOE Program Offices
 - Ensuring the integration of DOE O435.1 and CERCLA closure requirements

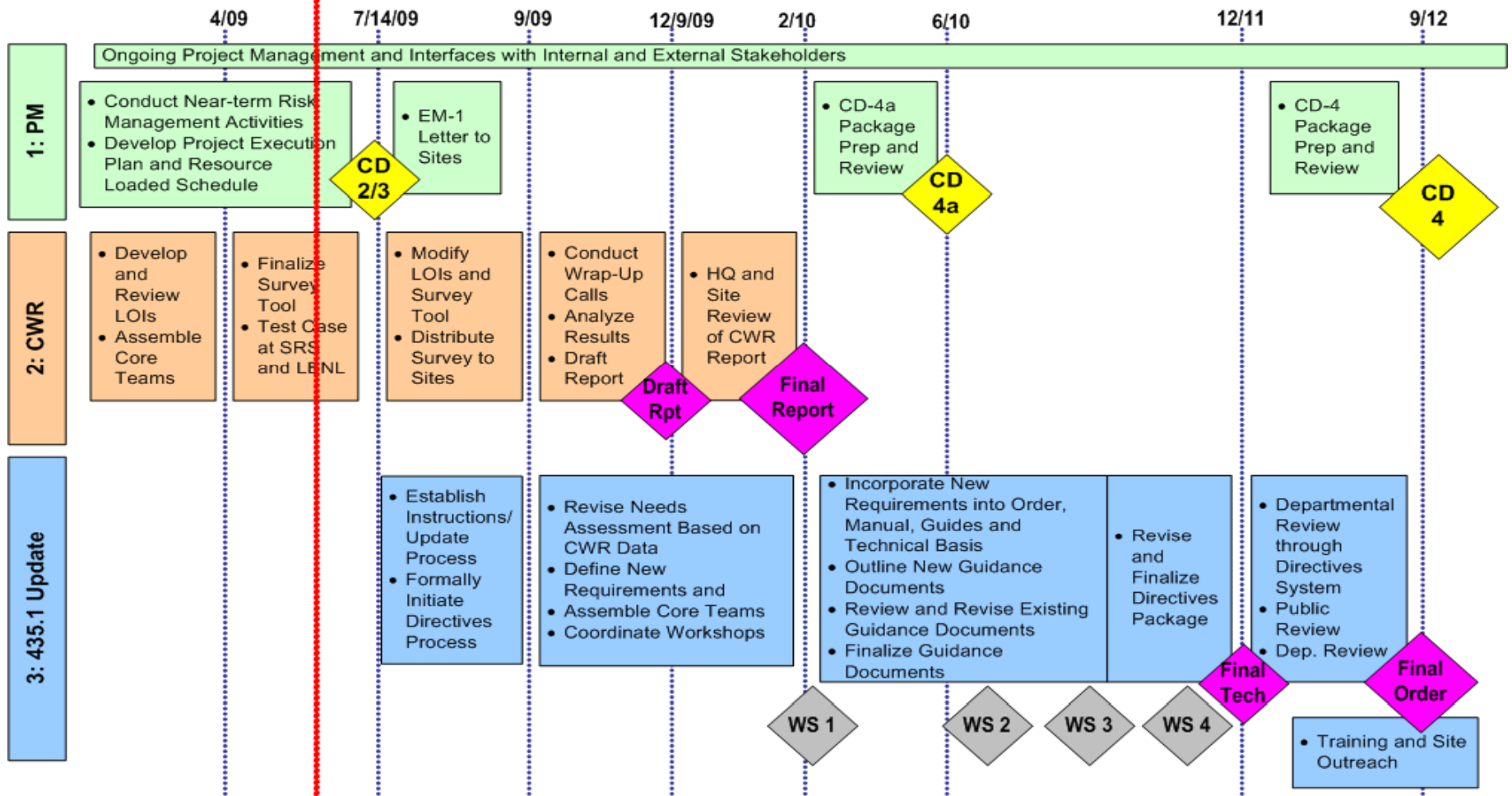


Examples of Results – LLW Review

- Best practices
 - “One touch” philosophy - waste will be packaged, classified, and characterized at the point of generation in full compliance with its disposition pathway to minimize overall risk and to promote consistency
 - Unreviewed Disposal Question Evaluation procedure at Savannah River Site is the standard for determining the impact to the performance assessment/composite analysis when proposed actions or new information is discovered
 - LLW Corporate Board provides an effective forum for sharing information across DOE sites
- Areas of improvement
 - Clearly establishing DOE authority to take ownership of radioactive material that is in the National interest
 - Ensuring work-for-others contracts or customer service agreements include radioactive waste management requirements and costs
 - Clarify the appropriate use of concentration averaging
 - Recognize the use of probabilistic modeling and analysis



DOE Order 435.1 Update Project Timeline



Current Project Status

Draft – Pre Decisional Document to support Deliberative Process

Summary

- DOE manages LLW under its own regulatory framework
- DOE is completing a complex-wide review to inform an update of its waste management order, DOE Order 435.1 in FY-10 through FY-12
- The Order 435.1 update is proceeding in parallel with NRC's update of 10 CFR 61, providing an excellent opportunity for coordination

