



**RIC 2009  
Nuclear Security  
Integrated Response**

William J Albany  
Limerick Township Police Department  
March 11, 2009

1

---

---

---

---

---

---

---

---



**Traditional LE Tactical Response**

- Autonomous Unit
- Surround & call out
- Negotiate
- Use of irritants (tear gas)
- Slow & deliberate entry
- Dynamic entry with superior weapons
- No police injuries acceptable

2

---

---

---

---

---

---

---

---



**Paradigm Shift**

- Integration with site security
- Communications interoperability
- Fortified hostile force
- Military tactics required
- Serious injuries probable
- Locate / maintain defensive position
- Integrate with State & Federal responders

3

---

---

---

---

---

---

---

---



### Paradigm Shift continued

- Vetting essential personnel
- Casualty collection
- Securing hostiles

4

---

---

---

---

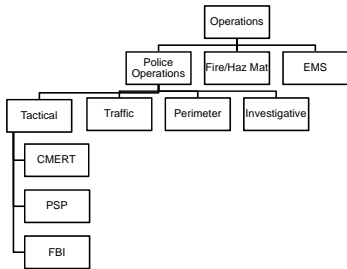
---

---

---



### Incident Command System



5

---

---

---

---

---

---

---