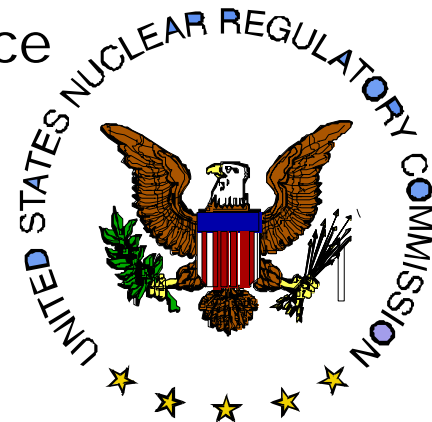


# NRO Preparation Activities in Support of New Reactor Licensing

Stephanie M. Coffin, Branch Chief  
AP1000 Projects Branch  
Division of New Reactor Licensing  
Office of New Reactors

2007 Regulatory Information Conference

March 13, 2007



# New Reactor Licensing – The Regulator's Perspective

---

- Maintain safety of licensed plants
- Predictable licensing process
- Meaningful public participation
- Enhanced safety for future plants
- Independent and credible regulator

# Outline of Presentation

---

- Expected submittals
- Design Center Review Approach
- Regulatory Infrastructure
- Other Preapplication Activities
- Challenges
- Conclusions

# Combined License Applications

---

- ❑ Combined construction permit and operating license for a nuclear power plant
- ❑ May reference an early site permit, a standard design certification, both, or neither
- ❑ Objective is to resolve all safety & environmental issues before authorizing construction
- ❑ Prior to fuel load, must verify the facility has been constructed in accordance with the license
- ❑ The combined license process in Part 52 is fundamental for reducing regulatory risk for companies building nuclear power plants

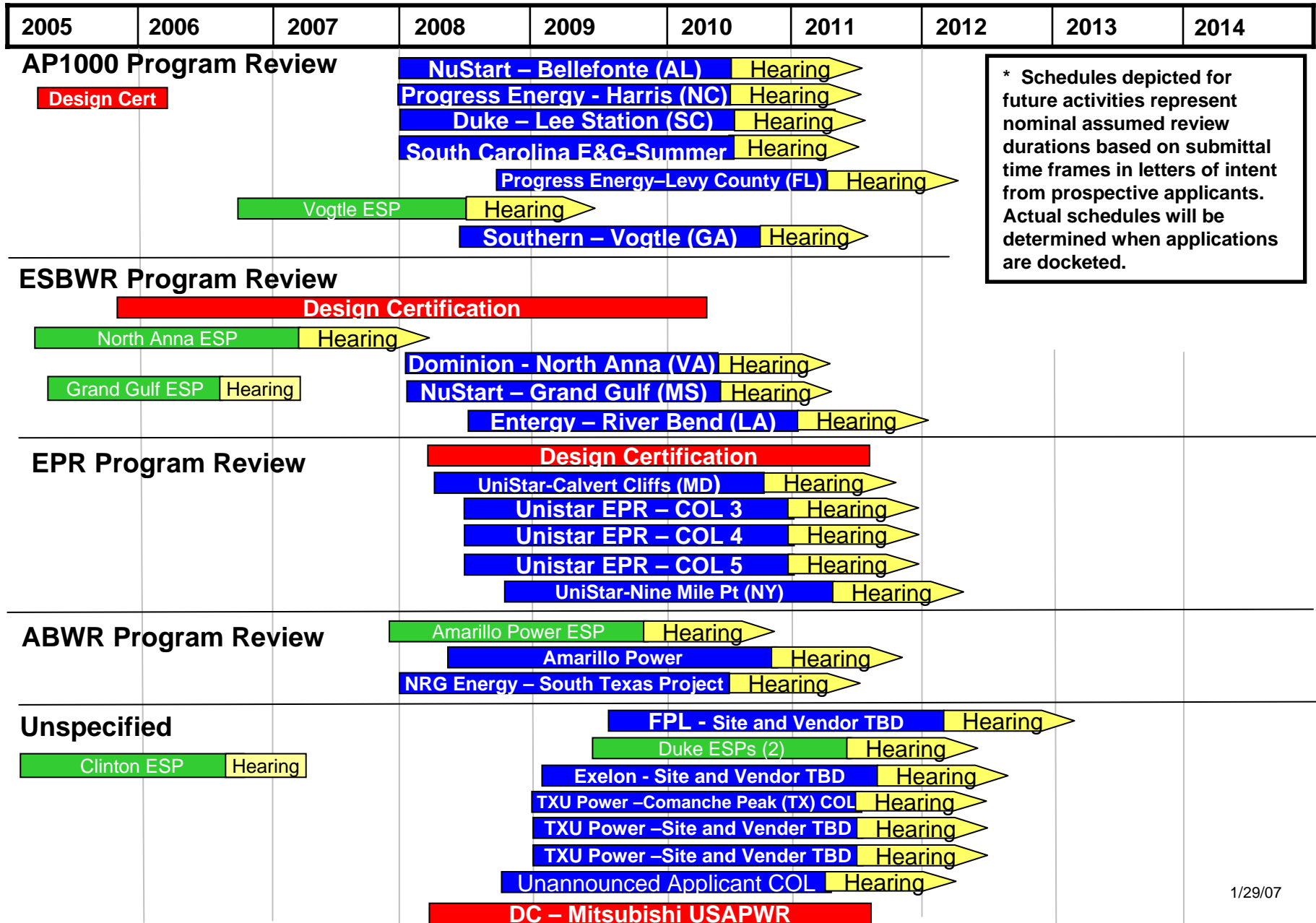
# Combined License Applications, continued

---

- Design
- Environmental Impacts
- Site Safety
- Qualifications
- Programs
- Inspections, Tests, Analyses and Acceptance Criteria (ITAAC)

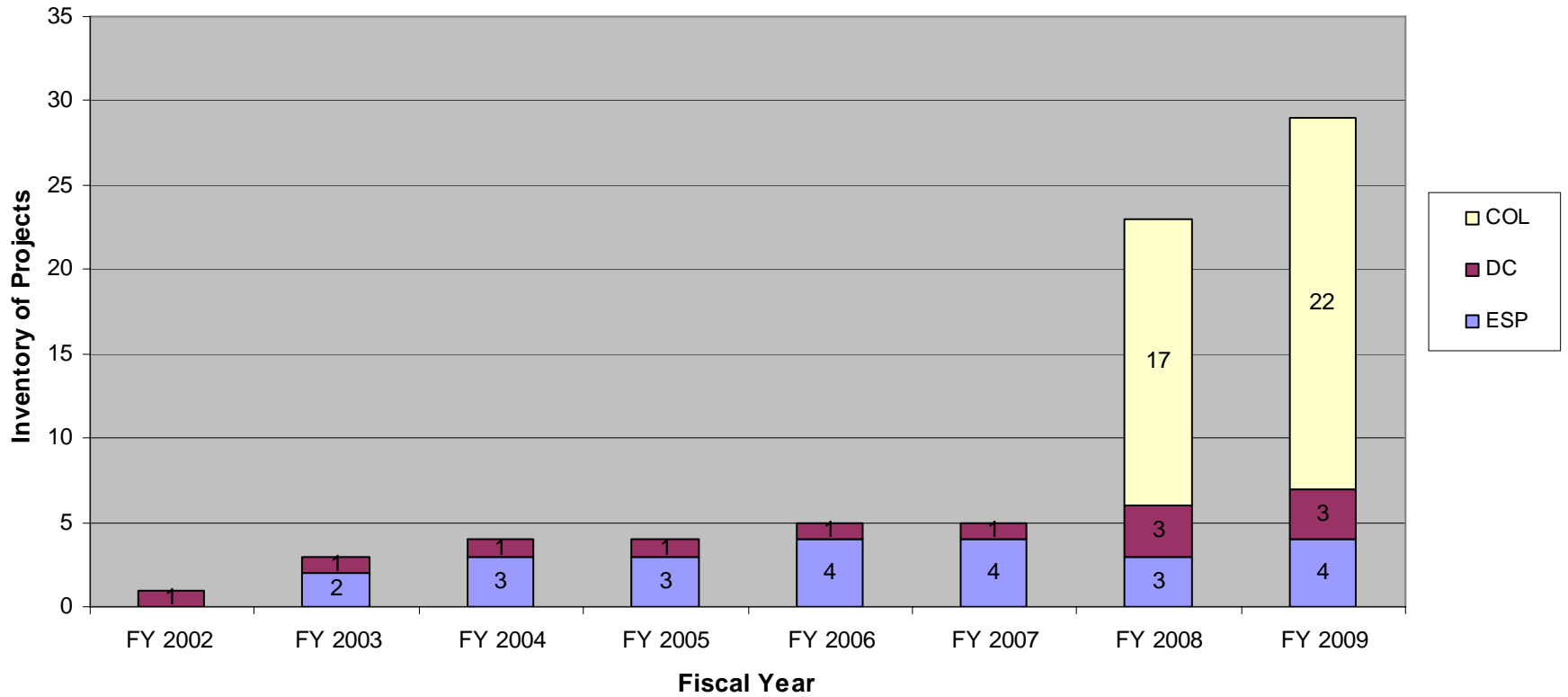
# New Reactor Licensing Applications

An estimated schedule by Fiscal Year



\* Schedules depicted for future activities represent nominal assumed review durations based on submittal time frames in letters of intent from prospective applicants. Actual schedules will be determined when applications are docketed.

# New Reactor Licensing Activities



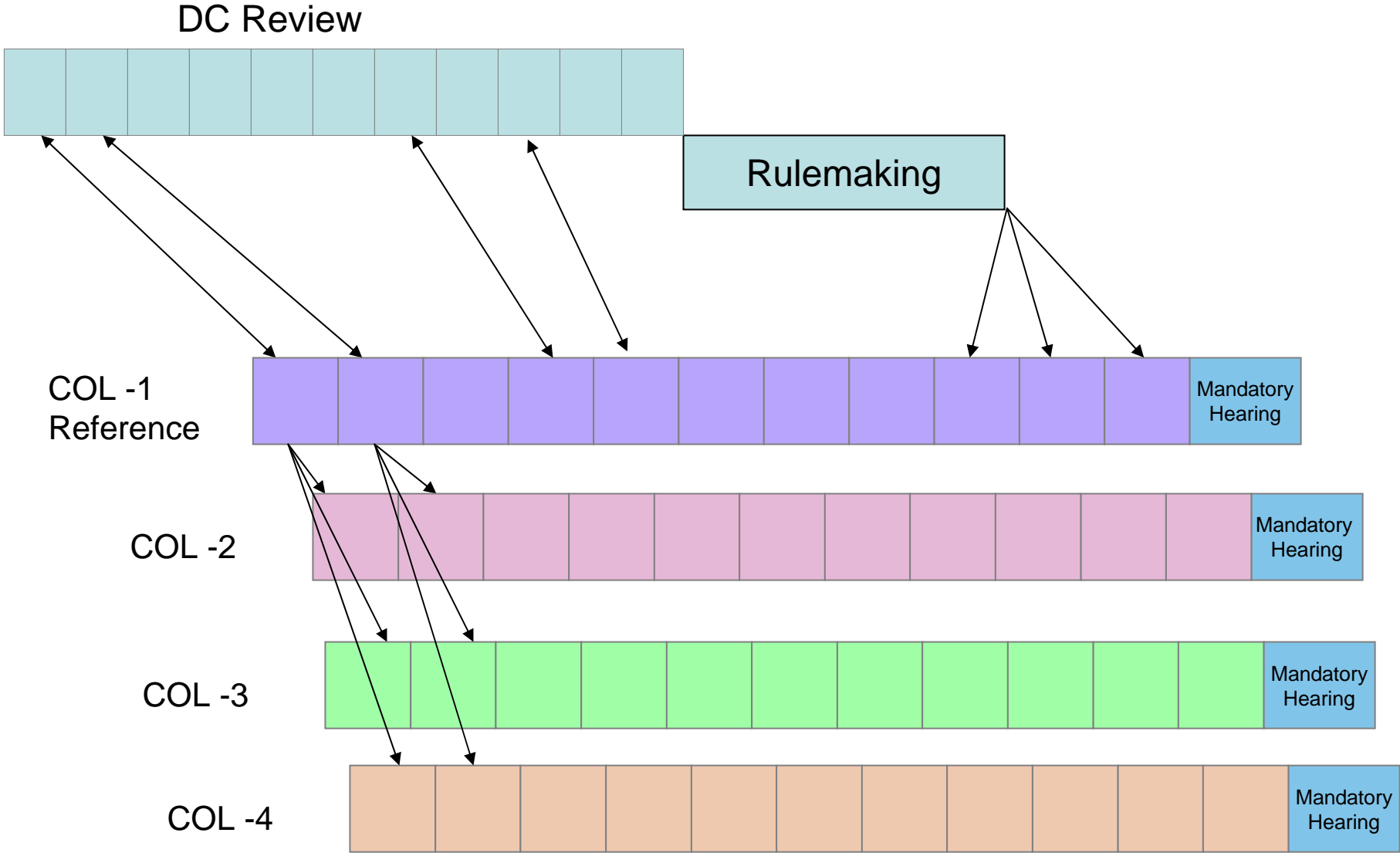
March 13, 2007

# Design Centered Review Approach

- Regulatory Issue Summary – RIS  
2006-06
  - “New Reactor Standardization Needed to Support the Design-Centered Licensing Review Approach”
  - Issued May 31, 2006
- Industry responses:
  - Support and endorse DCRA
  - Forming design centered working groups
  - Expect a significant level of standardization (70 – 75%)
- Reorganization within NRC



# One Decision – Multiple Applications



# Key Infrastructure Activities and Schedules

---

- 10 CFR Part 52 Rulemaking
  - Proposed rule to the Commission 10/31/06
  
- Combined License Regulatory Guide: DG-1145, “Combined License Applications for Nuclear Power Plants (LWR Edition)”
  - Formally released for public comment – September 2006
  - To be issued with final Part 52 rule – January 2007
  
- Update of NUREG - 0800, “Standard Review Plan” and key Regulatory Guides
  - March 2007
  
- Construction Inspection Program
  - Inspection, Test, and Analysis Acceptance Criteria procedures – January 2007

# Pre-application Activities

---

- Infrastructure
  - Rulemaking, DG-1145, SRP
- Topical reports
  - AP1000, US EPR, US-APWR, others
- Design-centered working groups
  - Technical issues
  - Other issues
- Reviews related to site characteristics for potential COL applicants

# Conclusions

---

- NRC is preparing for an exceptionally high level of new reactor licensing activity
- NRC will accomplish our mission to ensure adequate protection of public health and safety and the environment for new reactors licensed under 10 CFR Part 52
- NRC will review applications in a timely manner
- Applicants' standardized applications around the design-centered approach is essential