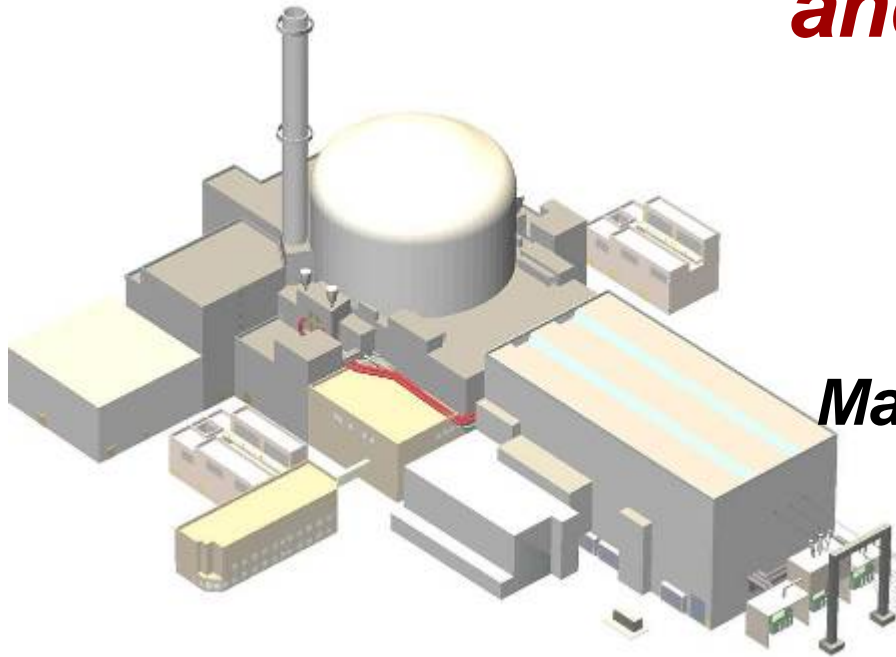


Perspective of a Design Certification Applicant on New Reactor Application and Review Guidance



Sandra M. Sloan
Manager, Regulatory Affairs
New Plants Deployment
AREVA NP Inc.

2007 Regulatory Information Conference

- > **Regulatory guidance for design certification (DC) applications**
- > **Addressing evolving regulatory guidance during the preparation of the DC application**

Key Regulatory Documents for a Design Certification Application

- > **Regulatory Guide 1.206 (DG-1145)**
- > **Standard Review Plan (NUREG-0800)**
- > **Regulatory Guides**
- > **Various SECY papers on topics such as:**
 - ◆ **Level of detail at the design certification phase**
 - ◆ **Design Acceptance Criteria (DAC)**
 - ◆ **Tiered approach for the Design Control Document (DCD)**
- > **Precedent in previous DC applications**

A combination of regulatory guidance is used for a design certification application.

Inferred Applicability of RG 1.206

- > **RG 1.206 specifies the information required for a COL application**
 - ◆ **Section C, Parts I and II intended for COL applicants who do not reference a certified design**
 - ◆ **Section C, Part III intended for COL applicants who reference a certified design**
- > **DC application content is inferred from RG 1.206**
- > **The challenge is defining DC scope and COL scope**

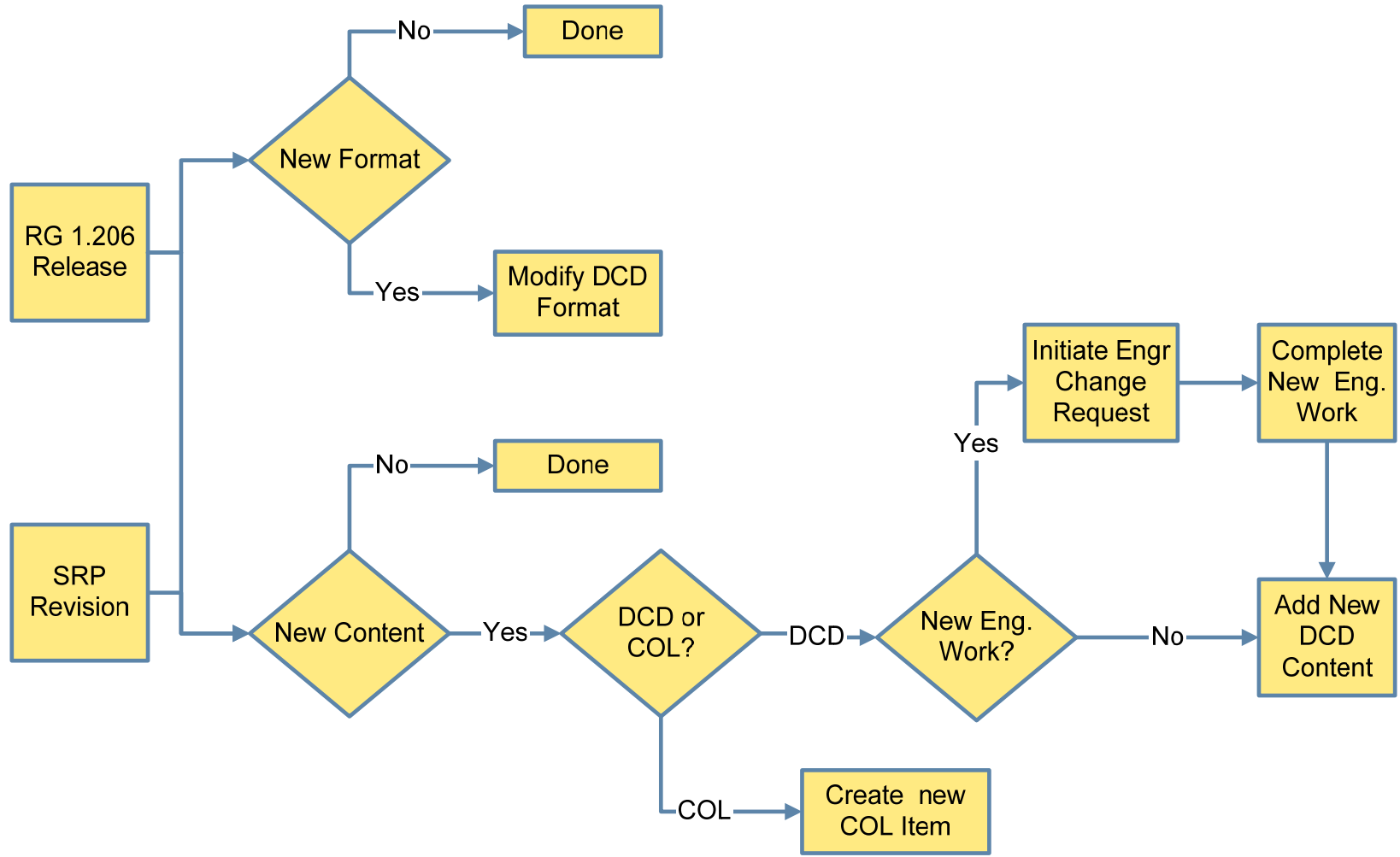
AREVA NP's approach is to use RG 1.206 as the key guidance document, to review precedent, and to work with the COL applicant to define the DC-COL scope split.

Regulatory Goal for the U.S. EPR Design Certification

- > High-quality, complete application that meets NRC expectations**
- > Conform with U.S. regulatory guidance in effect 6 months prior to the application**
- > Since the U.S. EPR design certification application will be submitted December 2007, new NRC guidance documents must be addressed that are being released in parallel with DCD preparation**

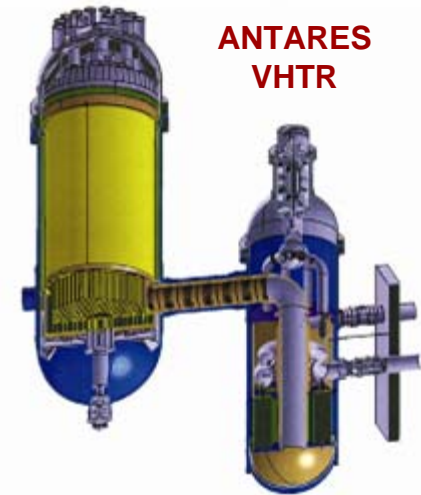
The Challenge: How to address evolving regulatory guidance to ensure a high-quality submittal?

Process for Managing New or Revised Regulatory Guidance



Summary and Conclusions

- > Part 52 specifies the regulatory processes for future new plant applicants (2007 and beyond!)
- > RG 1.206 provides the format and content guide for COL applications, and to some extent for DC applications
- > SRP updates provide more detail on DC-COL expectations
- > There is an additional opportunity to capture lessons learned for design certification (e.g., Tier 1, Tier 2, Tier 2*, DAC)
 - ◆ Improve consistency of DC applications
 - ◆ Increase efficiency of preparation and review



U.S. EPR

