



U.S.NRC

UNITED STATES NUCLEAR REGULATORY COMMISSION

Protecting People and the Environment

RIC 2007
Environmental Reviews
for New Reactors

Kevin Magerr, PE

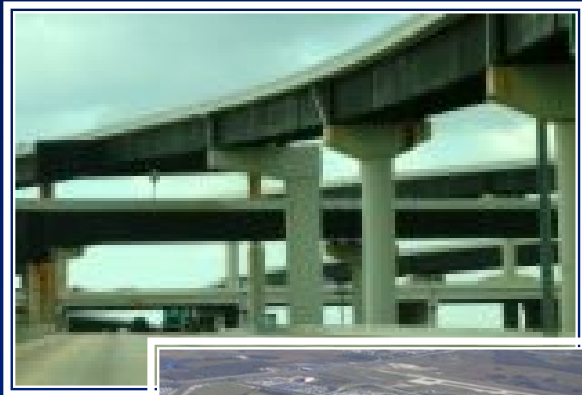
US EPA

March 15, 2007

NEPA and Other Environmental Statutory Concerns

(What you should expect to encounter during project development, construction, and operation)

NEPA – General Concepts



NEPA – General Concepts

Purposes of NEPA

- **Declare a national purpose to encourage harmony between people & the environment**
- **Promote efforts to prevent or eliminate damage to the environment & biosphere & stimulate health & welfare**
- **Enrich the understanding of the ecological system & natural resource important to the nation**
- **Establish the Council on Environmental Quality**

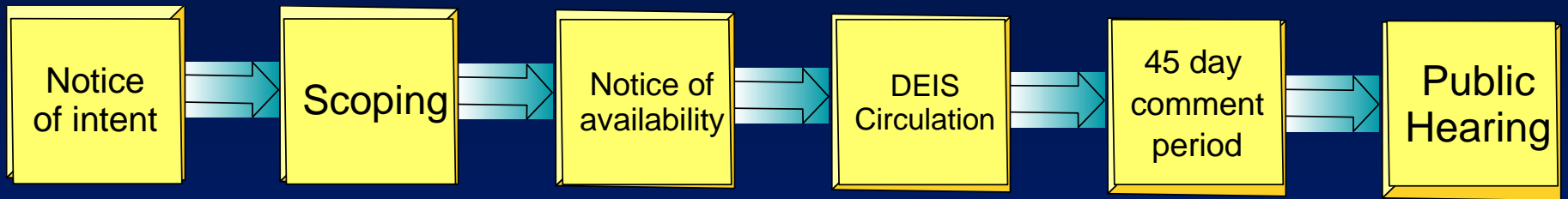
National Environmental Policy Act

- **Two parts to NEPA**
 - **Substantive**
 - **Sets a national policy for protection of the environment (Section 101)**
 - **Procedural**
 - **Establishes environmental decision making process (Section 102)**
 - **Action forcing procedures which require agencies to prepare a detailed statement of the environmental impacts of the proposed action and its alternatives**

Substantive

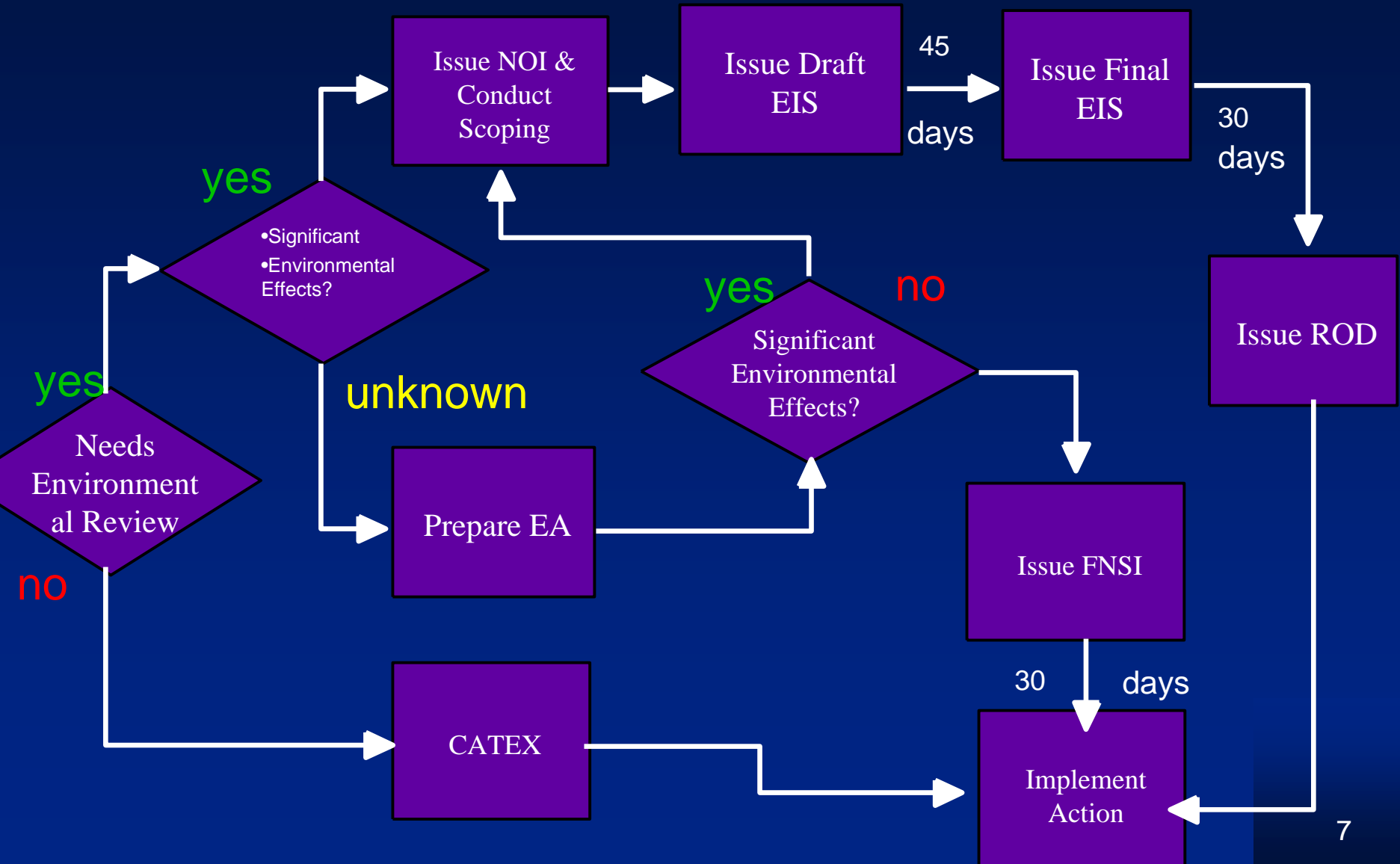


Procedural



Response to Comments

NEPA Process Flowchart



EAs & EISs - Content

- Purpose and Need
- Alternative Development
- Affected Environmental
- Environmental Consequence
- Evaluation of Construction & Operation Impacts
- Public & Agency Coordination
- Preferred Alternative Selection
- FONSI or ROD

Roles Under NEPA

Lead Federal Agency

Joint Lead Agency

Cooperating Agency

Council on Environmental Quality

Environmental Protection Agency

EPA's EIS Rating System

- Project:
 - LO = Lack of Objections
 - EC = Environmental Concerns
 - EO = Environmental Objections
 - EU = Environmentally Unsatisfactory
- Document:
 - 1 = Adequate EIS
 - 2 = Insufficient Information
 - 3 = Inadequate EIS
- Adverse ratings (EU & 3) require Headquarters approval



Contact Information:

William Arguto
U.S. EPA Region III
1650 Arch Street
Philadelphia, Pa. 19103

Phone 215-814-3367
E- mail arguto.william@epa.gov

Kevin Magerr
U.S. EPA Region III
1650 Arch Street
Philadelphia, Pa. 19103

Phone 215-814-5724
E- mail magerr.kevin@epa.gov

Additional Information:

<http://www.epa.gov/compliance/nepa/index.html>



Construction and Operation Implications

CWA - NPDES

Storm Water – Construction and Industrial Activities

- **SWPPP**

Construction and Operation Implications

CWA - NPDES

Wastewater

- **Technical and Water Quality Standards**

CWA - NPDES

Storm Water

<http://www.epa.gov/ebtpages/watestormwater.html>

Wastewater

<http://www.epa.gov/ebtpages/watewastewater.html>

Conclusion: