

RIC 2005
SESSION W-F3
EXPANDING THE BENEFIT OF
PIs

A Licensee's Perspective

Bill Mookhoek

Sr. Staff Licensing Engineer

STP Nuclear Operating Company

March 9, 2005



A Licensee's Perspective

- Performance Indicators are de facto Performance Standards
- Licensees do not willingly accept crossing the Green-White threshold
- Plant generated indicators require action prior to crossing the NRC threshold



Station Specific Thresholds

Example - AFW which has an NRC white threshold of 2.0%

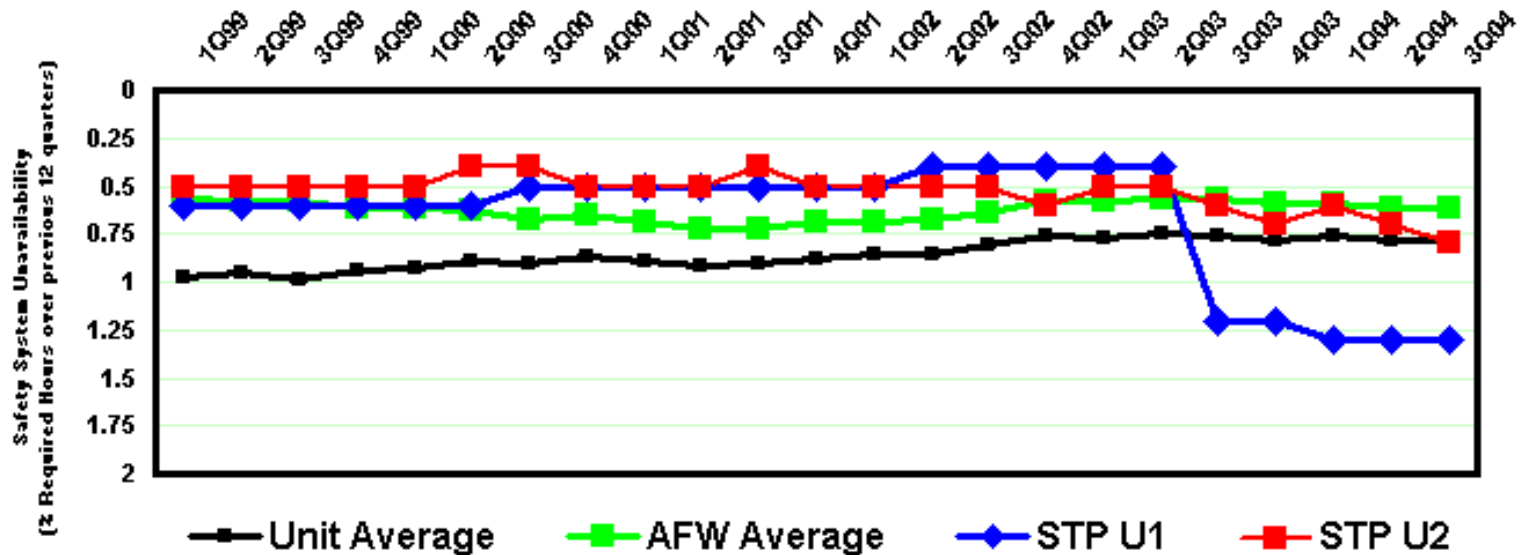
- a) Station Green - <1.0
- b) Station White - 1.0 - 1.5
- c) Station Yellow - 1.51 - 2.0
- d) Station Red - >2.0 AND NRC WHITE

Actions are required for declining performance



Using Industry Trends

- Trend plant performance against industry performance



Communicate Declining Performance

NRC CORNERSTONE		NRC INDICATOR	SITE PERFORMANCE
INITIATING EVENTS	↗	SCRAMS	↗
		SCRAMS WITH LOSS OF NORMAL HEAT REMOVAL	→
		UNPLANNED POWER CHANGES	↗
MITIGATING SYSTEMS	↘	EDG UNAVAILABILITY	→
		HPSI UNAVAILABILITY	→
		AFW UNAVAILABILITY	↘
		RHR UNAVAILABILITY	↘
		SAFETY SYSTEM FUNCTIONAL FAILURES	→
BARRIER INTEGRITY	↗	RCS ACTIVITY	→
		RCS LEAKAGE	↗
EMERGENCY PREPAREDNESS	↘	DRILL/EXERCISE PERFORMANCE	↘
		DRILL PARTICIPATION	↗
		ALERT NOTIFICATION SYSTEM PERFORMANCE	↘
OCCUPATIONAL RADIATION SAFETY	→	OCCUPATIONAL EXPOSURE CONTROL	→
PUBLIC RADIATION SAFETY	→	RETS/ODCM OCCURRENCE	→



Recognizing Opportunities

Licensee sponsored meeting to review performance indicators every 2 years

- Discontinue those of diminished benefit
- Forum to suggest industry areas to investigate development of new indicators which can substitute for inspection

Open to Change the Process

- Risk informed indicators
- Indicator with no threshold



Conclusions

- Performance Indicators are Performance Standards
- Resources expended should result in a real benefit to the regulator, the public, and the industry
- Use performance indicators to compare station to industry performance