

**RIC 2005 – Session B3: Objective Measures of Safety Culture**

# **FENOC SAFETY CULTURE MODEL**

Clark A. Price, Manager – Site Regulatory Compliance  
Davis-Besse Nuclear Power Station

March 9, 2005



*FirstEnergy Nuclear Operating Company*

# **FENOC SAFETY CULTURE MODEL**

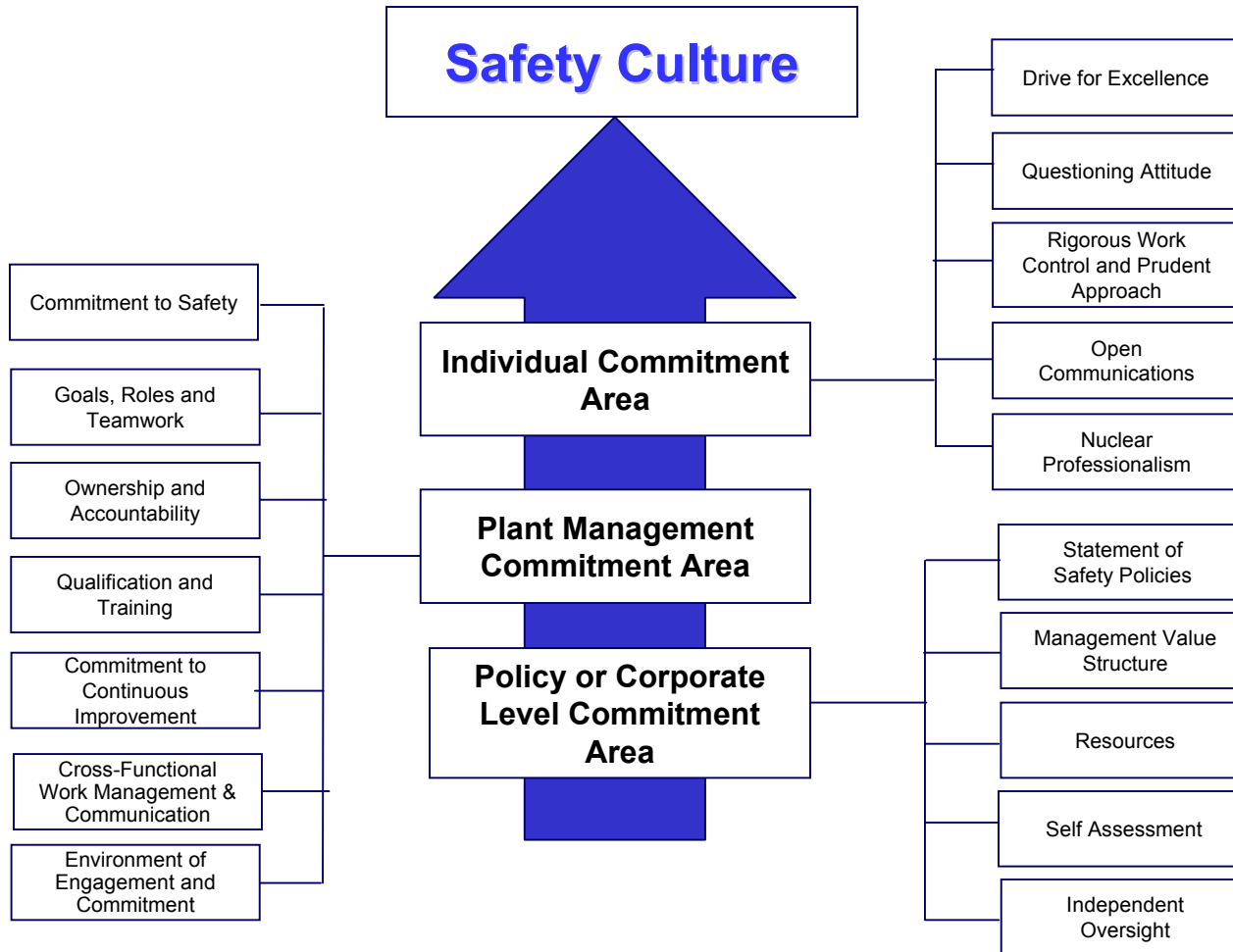
## **Safety Culture**

That assembly of characteristics and attitudes in organizations and individuals which establishes an overriding priority towards nuclear safety activities and ensures that issues receive the attention warranted by their significance.

## **Safety Conscious Work Environment**

An environment in which personnel are encouraged to identify problems, are confident that problems will be effectively evaluated and corrected, and are protected from any form of retaliation as a result of having raised issues.

# FENOC SAFETY CULTURE MODEL



**Commitment Areas (3)**

**Indicator Criteria (17)**

**Attributes (121)**

**Performance Criteria (Green, White, Yellow, Red)**

# FENOC SAFETY CULTURE MODEL

**Commitment Area** - Policy or Corporate Level

**Indicator Criteria** - Statement of Safety Policy

**Attribute** - Worker Understanding of Responsibility to Raise Safety Concerns

## **Performance Criteria**

- Surveys/Interviews Indicate Workers Understand their Responsibility to Raise Nuclear Safety or Quality Concerns

\* Site Wide Survey / Interviews / 4Cs Data

# FENOC SAFETY CULTURE MODEL

**Commitment Area** - Plant Management

**Indicator Criteria** - Commitment to Safety

**Attribute** - Decision Making

## **Performance Criteria**

- Majority of Safety Significant Decisions were made in the Section with Adequate Information, Management Oversight, Involvement, and Peer Checking as indicated by no Significant Conditions Adverse to Quality for the Designated Period

\* Section Manager Report-Outs

# FENOC SAFETY CULTURE MODEL

**Commitment Area** - Plant Management

**Indicator Criteria** - Ownership and Accountability

**Attribute** - Timeliness of SCAQ and CAQ Remedial and Preventive Corrective Actions

## **Performance Criteria**

- Percentage of Section SCAQ and CAQ Remedial and Preventive Corrective Actions Completed on Time

\* Corrective Action Program / Section Manager Report-Outs

# FENOC SAFETY CULTURE MODEL

**Commitment Area** - Individual

**Indicator Criteria** - Drive for Excellence

**Attributes** - Maintenance Rule (a1) Systems

- Operator Work Arounds
- Control Room Deficiencies
- Temporary Modifications

**Performance Criteria**

- Number of Open Items
- \* Monthly Performance Indicators