

RIC 2003

Reactor Oversight Process, W5

Past Insights and Future Challenges

Stephen D. Floyd
Vice President Regulatory Affairs
Nuclear Energy Institute
April 16, 2003

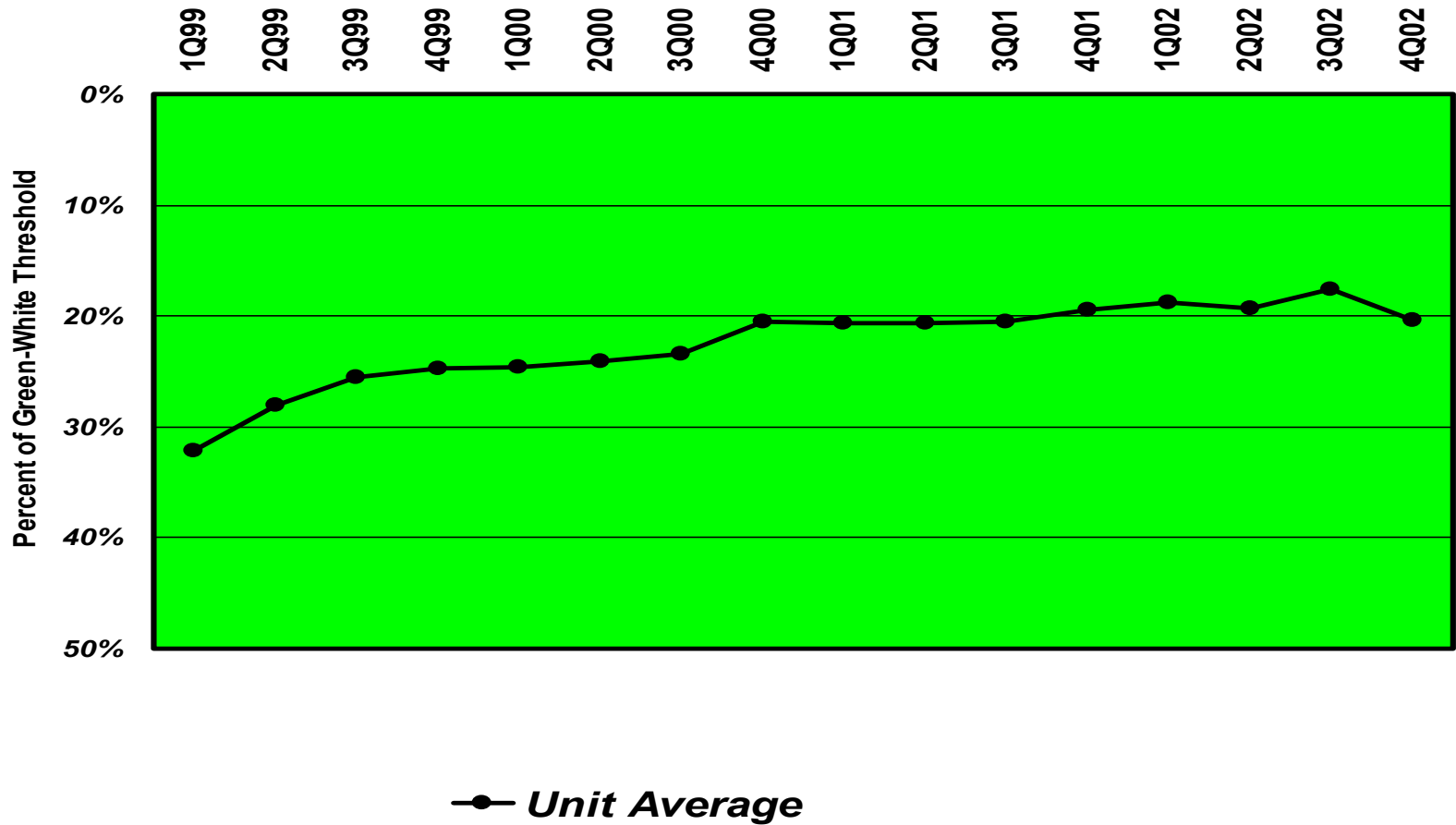


ROP Past Insights

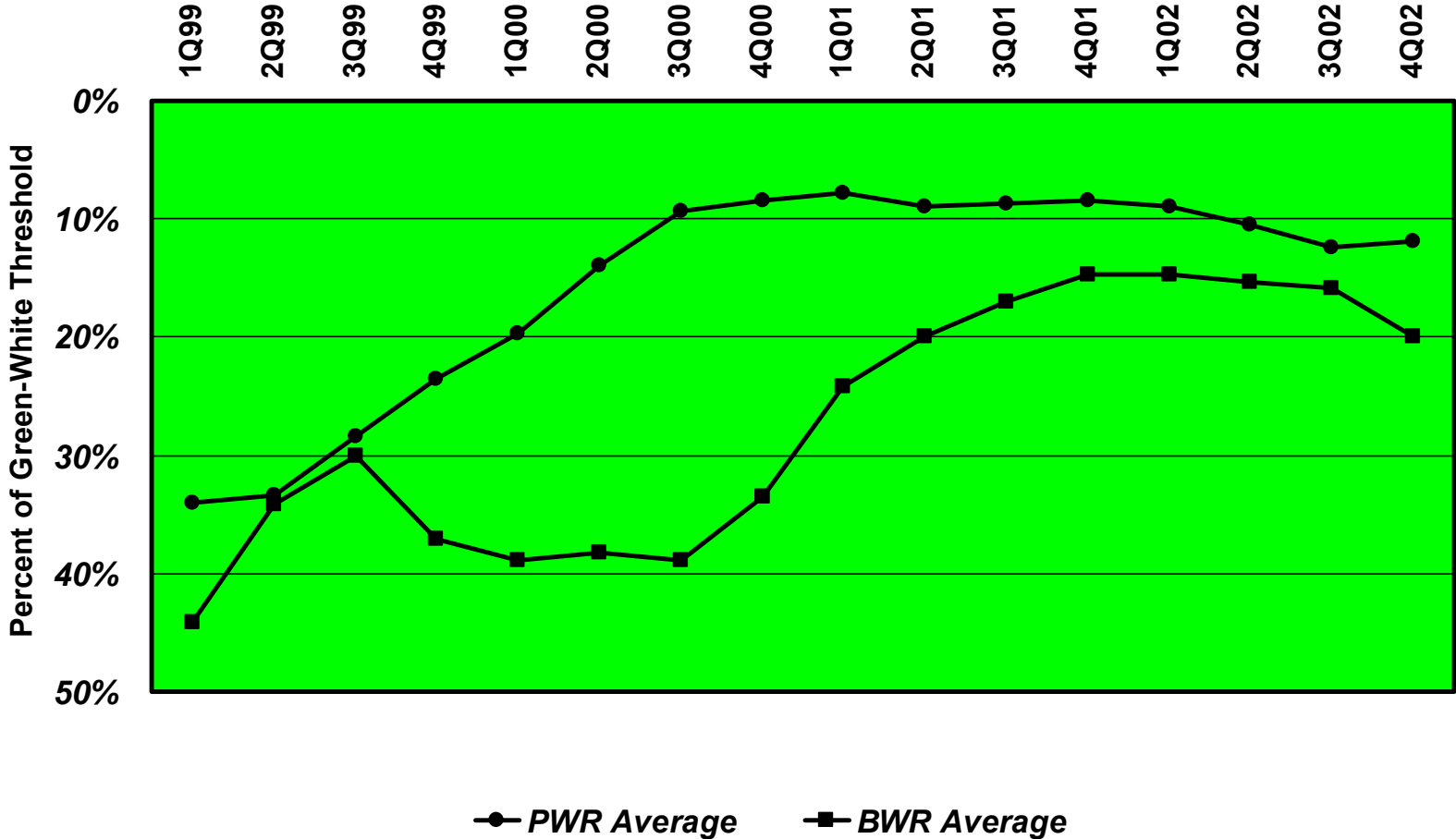
- What gets measured, gets improved
- Some longstanding design basis requirements are not risk significant
- The bedrock of the ROP is problem identification and resolution
- Though much improved, process is not perfect -- we will continue to have surprises
 - However, more advantage needs to be taken of the ROP provision for inspection of emerging issues
- Changes in organizational culture takes longer than you think

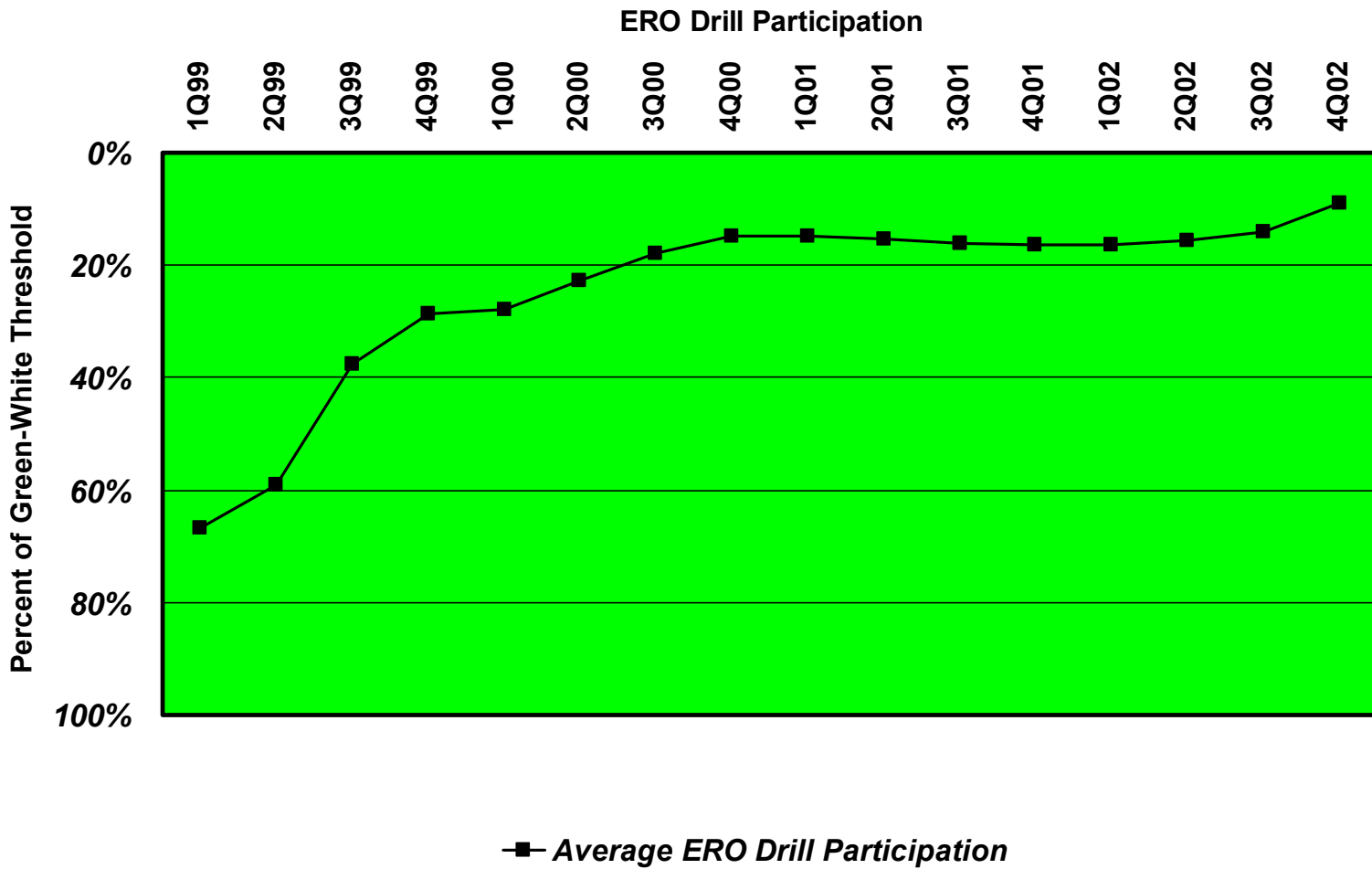


Unplanned Power Changes per 7000 Critical Hours

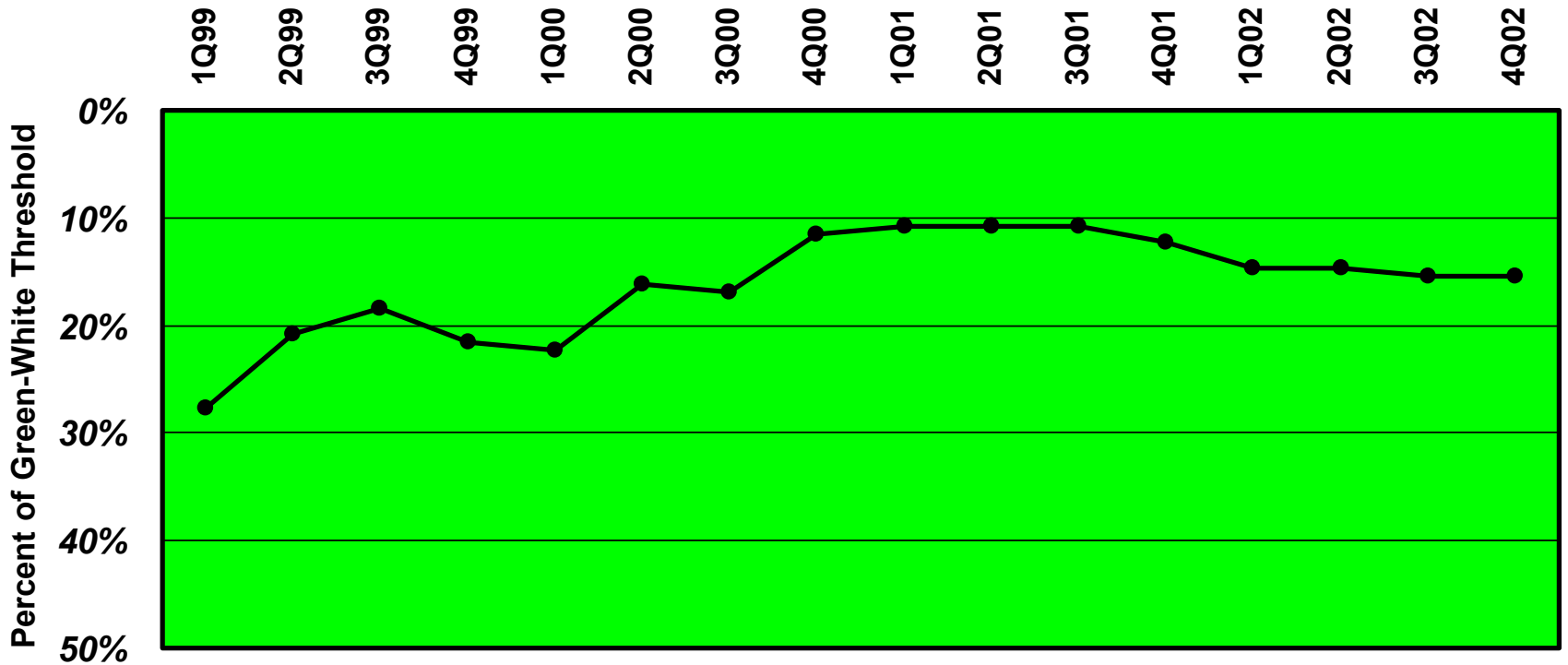


Safety System Functional Failures





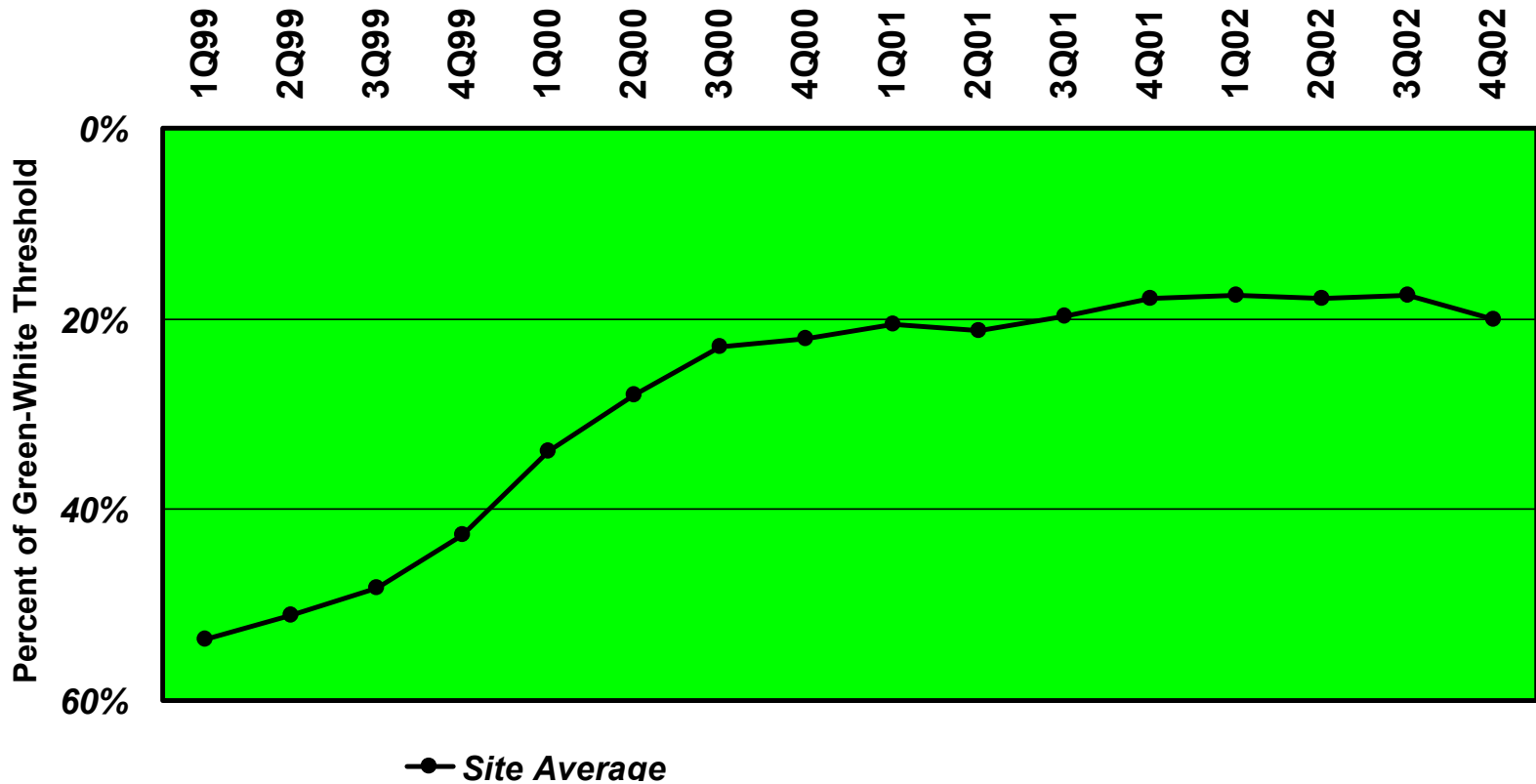
Occupational Exposure Control Effectiveness



● Site Average Occupational Exposure Control Effectiveness



Protected Area Security Equipment Performance Index



ROP Future Challenges

- Making the ROP more risk informed, as well as performance based
- Resolving differences between NRC SPAR models and licensee PRAs
- Moving the ball forward in risk informing the regulations themselves
- Improving several PIs (e.g., Mitigating Systems and Scrams w/ Loss of Normal Heat Removal)
- Treatment of design issues in the SDP
- Stopping analysis at the appropriate level of precision
- As industry performance continues to improve, can NRC accept “all green” performance?



Conclusions

- ROP is a significant improvement over the previous process
- ROP has resulted in safety performance improvement
- Results are more timely and visible to the public
- ROP helps to focus industry and NRC resources on more risk significant areas
- The process can be further improved