



Westinghouse

RIC 2002

Session W4

Power Upgrades

Westinghouse Fleet Upgrade Viability

John Fasnacht

*Manager - Integrated Plant Engineering
Services*

Westinghouse Electric Company

March 6, 2002



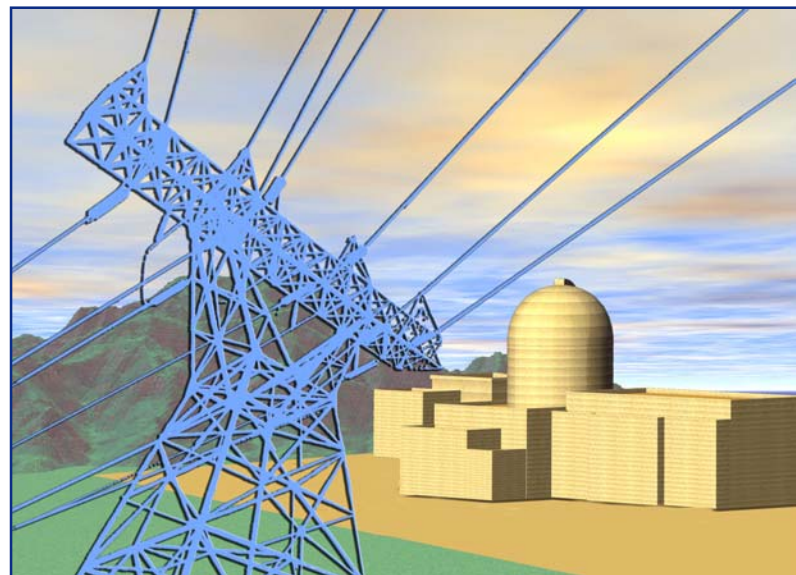
Westinghouse

A BNFL Group company

Achieving New Levels of Excellence While
Maximizing Fleet Production

Recent Experience - Sustaining the Momentum

- Combined Westinghouse and Combustion Engineering fleet - successfully achieved 56 uprates equivalent to 2450 MWe
- Recent activity
 - 9 Appendix K uprates
 - 6 Stretch uprates
- Work in process/ licensing
 - 7 Appendix K uprates
 - 5 Stretch/extended power uprates
- Several utilities developing success path for extended power uprates



Enhancing Performance - Achieving New Levels of Excellence to Maximize Fleet Production

- Deregulation and Life Extension Driving Forces
- Continued use and affirmation of power uprate process and technology
- Improving technology to maximize customer value
- Performing and implementing lessons learned with integrated team members
- Leading integrated project design and implementation
- Leveraging best practices of combined Westinghouse and CE organizations
- Enhanced regulatory interface to optimize regulatory review process



Building the Future - Maximize Fleet Output

- Technology platforms for 10 - 20% power uprates
- Understanding of design and licensing basis issues and margins are critical
- Ultimate fleetwide potential - up to 5000 Mwe
- Working closely with utilities, vendors, and NRC - leveraging the excellence within all stakeholders to achieve program success

