



RIS 2015-13: “SEISMIC STABILITY ANALYSIS METHODOLOGIES FOR SPENT FUEL DRY CASK LOADING STACK-UP CONFIGURATION”

John Vera, Ph.D.

Project Manager, NMSS/SFM/SFLB

2015 Regulatory Conference

November 19, 2015

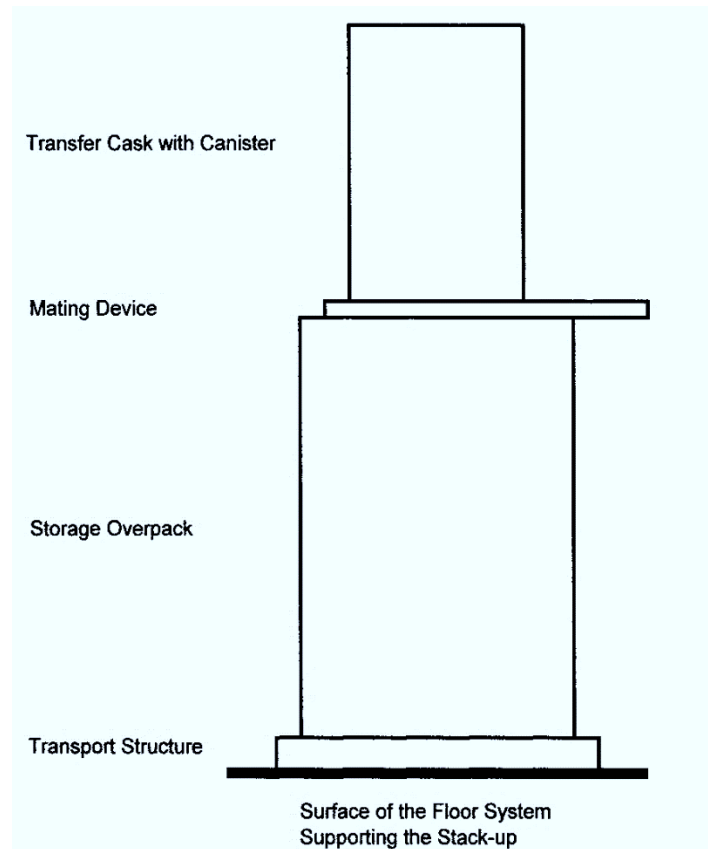


Presentation Outline

- Introduction
- Purpose
- Background
- What the RIS includes
- What the RIS does not include
- Comments/Questions

Introduction

- Stack-up configuration: when a transfer cask is on top of the overpack as part of loading operations



Introduction

- Overall Topic: Stability of stack-up configuration under seismic loads
- Methods to address:
 - physical restraints
 - analysis that demonstrates adequate seismic stability performance
- RIS deals with analytic methods

Background

- The NRC staff has reviewed several stack-up seismic stability analysis calculations performed by licensees under 10 CFR 72.122(b) and 72.212(b). Some concerns NRC staff has identified include:
 - Using a single time history to perform a nonlinear seismic analysis
 - Significantly altering the phasing of frequencies in the time histories
 - Double counting damping in rocking analyses
 - Not benchmarking finite element models against known solutions
- The RIS provides information associated with the concerns that have been identified by NRC staff

Purpose

- Purpose of RIS: share information regarding acceptable seismic stability analysis methodologies to determine seismic stability of spent fuel dry cask loading stack-up configurations
- Information could be used for: performing analyses to evaluate stack-up stability for 72.212 report, address inspection item, licensing activities

RIS Includes

- Included in RIS:
 - Discussion on when nonlinear time history analysis is necessary to determine rocking stability
 - Time history analysis technical details
 - Discussion of acceptance criteria for rocking and sliding
 - Finite element modeling considerations
 - Information on ensuring conservative results
- In summary: RIS has technical information

Not in RIS

- Not within scope of RIS:
 - New Regulatory Requirements
 - A RIS cannot and does not impose new regulatory requirements
 - Discussion of 10 CFR Part 72/ Part 50 interface
 - Group 4 of the Licensing Program Improvement (LPI) project is currently working on clarification of 72/50 interfaces
- In summary: RIS has technical information



Feedback

Thanks for your attention...



Your thoughts and ideas are welcome!