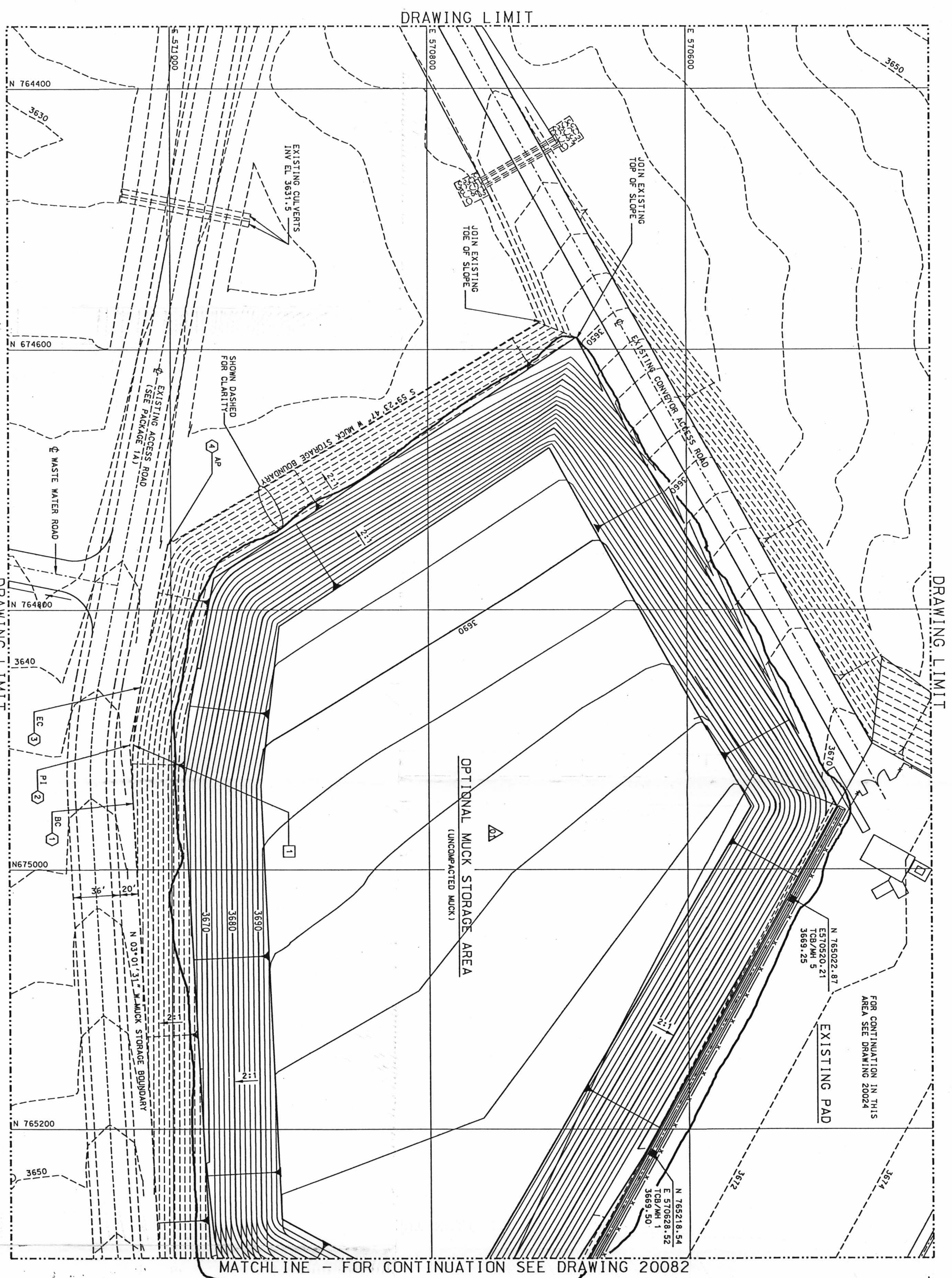


10-189002-00-17-11131-00000000-BARB-BABB00000000-01711-21-00-20083-dgn



- NOTES:**
1. FOR CIVIL ABBREVIATIONS SEE DRAWING 20005.
  2. FOR CIVIL GENERAL NOTES, LEGEND AND SYMBOLS SEE DRAWING 20006.
  3. CORROSION ARE FOR LAYOUT PURPOSES ONLY. FINAL LOCATION MAYBE WITHIN 5 FEET OF LAYOUT.

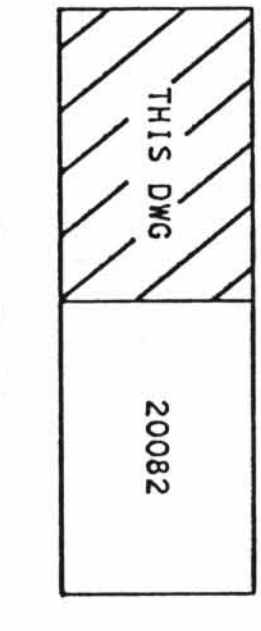
9609300046

**LEGEND**

①	BC N 764948.89	E 571029.80
②	PI N 764903.76	E 571032.19
③	EC N 764859.41	E 571023.59
④	AP N 764750.60	E 571002.49

**CURVE DATA**

NO	DELTA	RADIUS	LENGTH	TANGENT
1	14° 00' 00"	368.00'	89.32'	45.18'



NO	REV	DATE	BY	CHK	DESCRIPTION
01	REV. DA CLASSIFICATION, ADDED ADDITIONAL MUCK STORAGE AREA	5-15-04	[initials]	[initials]	
00	ISSUED FOR CONSTRUCTION	9-26-95	DPS	HAA	RC

**U.S. DEPARTMENT OF ENERGY**  
**M&C**  
 MANAGEMENT & OPERATING CONTRACTORS

**STORAGE AREA SHT 2 OF 2**

**OPTIONAL MUCK GRADING PLAN**

DATE: JUN 03 1995

EFFECTIVE DATE: 6/3/96

RECORD DESTINATION: O&M/A

8 7 6 5 4 3 2 1

15-MAY-1996 10:04

9609300046

O-15