



PECO ENERGY

PECO Energy Company
Nuclear Group Headquarters
965 Chesterbrook Boulevard
Wayne, PA 19087-5691

December 13, 1999

Docket No. 50-352

License No. NPF-39

U.S. Nuclear Regulatory Commission
ATTN: Document Control Desk
Washington, DC 20555

**SUBJECT: Limerick Generating Station, Unit 1
Reuse of Fuel Channels on Ex-Shoreham Fuel Bundles**

Dear Sir/Madam:

We are submitting for information only, an update regarding the 80 ex-Shoreham fuel assemblies that will remain in the reactor core for their second cycle at Limerick Generating Station (LGS), Unit 1, for Cycle 9 operation. Attachment 1 (i.e., Figure 1) shows the location and description of these assemblies, in accordance with our commitment described in our letter to the NRC, dated July 3, 1996.

The original evaluation prepared by General Electric Company (GE), "Evaluation of Limerick Initial Core Channels for Re-Use on ex-Shoreham Fuel Bundles," dated April 1996, remains valid for this application.

If you have any questions, please do not hesitate to contact us.

Sincerely,

James A. Hutton
Director - Licensing

Attachment: As stated

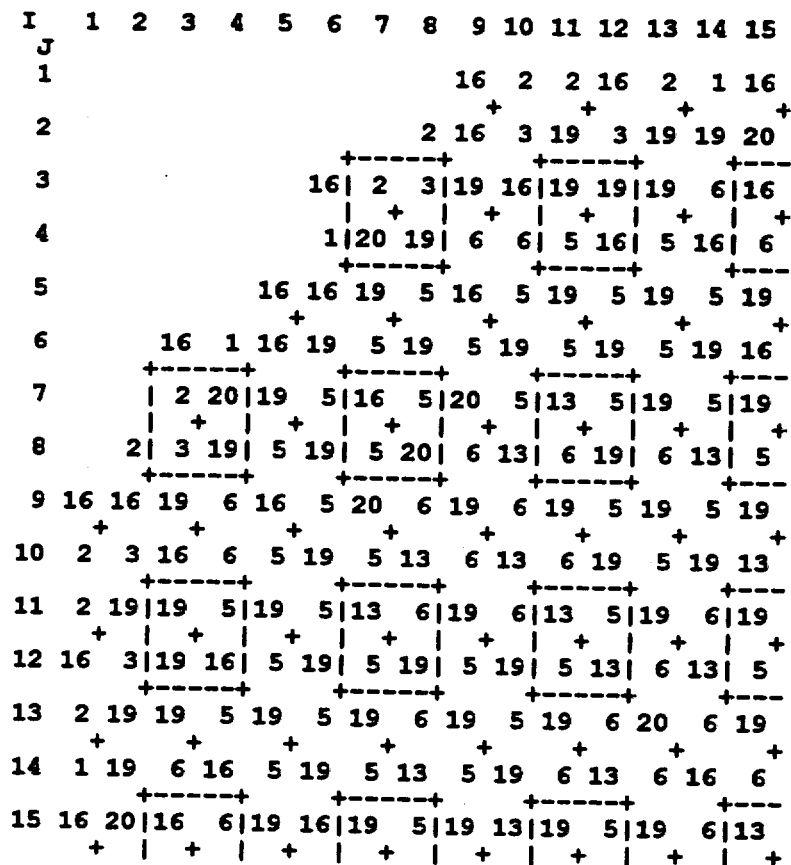
cc: H. J. Miller, Administrator, Region 1, USNRC (w/attachment)
A. L. Burritt, USNRC Senior Resident Inspector, LGS (w/attachment)
R. R. Janati, PA Bureau of Radiological Protection (w/attachment)

A001

PD 16 ADOCK 05000352

Figure 1

Limerick 1, Cycle 9, Loading Pattern and Bundle Types



Note: Quarter Core Map (Upper Left-hand Quadrant)

Fuel Type	Description	Initial Enrichment (weight %)	Exposure
1	Shoreham GE6 (reused channels)	1.76	Once Burned
2	Shoreham GE6 (reused channels)	2.19	Once Burned
3	Shoreham GE6 (reused channels)	2.19	Once Burned
5	GE13	4.17	Fresh
6	GE13	4.17	Fresh
13	GE11	3.31	Twice Burned
16	GE13	4.04	Twice Burned
19	GE13	4.12	Once Burned
20	GE13	4.13	Once Burned