



TXU Electric
Comanche Peak
Steam Electric Station
P.O. Box 1002
Glen Rose, TX 76043
Tel: 254 897 8920
Fax: 254 897 6652
lterry1@txu.com

C. Lance Terry
Senior Vice President & Principal Nuclear Officer

Log # TXX-99179
File # 10010.1
905.2
Ref. # 10CFR50.55a(g)

November 17, 1999

U. S. Nuclear Regulatory Commission
Attn: Document Control Desk
Washington, DC 20555

SUBJECT: COMANCHE PEAK STEAM ELECTRIC STATION (CPSES)
DOCKET NO. 50-446
TRANSMITTAL OF INSERVICE INSPECTION PROGRAM PLAN
INTERIM CHANGE REQUEST

Gentlemen:

This transmittal is for the purpose of a manual update only. The Interim Change Request is the vehicle used to document Inservice Inspection (ISI) Program Plan changes prior to issuance of the next Inservice Inspection Program Plan revision. This transmittal does not contain a request for relief from ASME Code Requirements.

Enclosed is the following document to update your copy (Revision 3) of the CPSES Unit 2 Inservice Inspection Program Plan:

Interim Change Request No. ISI-2R3-001

The relief requests in Interim Change Request No. ISI-2R3-001 are included in the ISI Program Plan for information only. Unit 2 relief request C-4 was submitted in accordance with 10CFR50.55a(g)(5)(iii) via TXX-99175 on July 16, 1999.

A047

PDR ADOCK 0500446

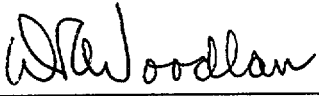
TXX-99179
Page 2 of 2

This communication contains no new licensing basis commitments regarding CPSES Units 1 and 2.

If you have any questions, please contact Carl Corbin at (254) 897-0121.

Sincerely,

C. L. Terry

By: 
D. R. Woodlan
Docket Licensing Manager

CBC/cbc

Enclosure

c - E. W. Merschoff, Region IV
J. I. Tapia, Region IV
D. H. Jaffe, NRR
Resident Inspectors, CPSES
Mr. G. Bynog, TDLR

ENCLOSURE TO TXX-99179

INTERIM CHANGE REQUEST

Plan Title/Rev. Unit 2 Inservice Inspection Plan Rev. 3 ICR No. ISI-2R3-01

Reference: Page
Table
Relief Request, and/or
Component: Sections 4.2 & 4.3 & 4.4
App's A & B

Reason for Change: Implementation of the 2RFO4 ISI Outage Plan has identified several examination items that have been corrected, have had calibration block changes, have been rescheduled or require relief requests, the changes requested maintain ISI Plan compliance with ASME XI requirement for sample percentages, schedules and examination methods.

Proposed Revision:

See page 2 for proposed revision

Jade Bonin Initiator Eng Prog's Department 7/7/99 Date

Approved: Yes No R.B. Mays AS Mays 7-7-99 Date
Engineering Programs Supervisor
Manager 7/7/99

Reason for Disapproval:

Proposed Revision (contd.):

- Replace existing section 4.2 and 4.3 page numbers 82, 212, 214, 215, 216, 217 and 226 with the attached marked up pages.
- Replace existing section 4.4 page number 1 with the attached up page 1.
- Replace the existing Appendix A, page 2 with the attached Appendix A, page 2.
- Add the attached relief request C-4 to Appendix A.
- Replace the existing Appendix B, page 2 with the attached Appendix B, page 2.

COMANCHE PEAK UNIT 2
 INSERVICE INSPECTION PLAN
 CLASS 2 SCHED/COMPL COMPONENTS

SUMMARY EXAMINATION AREA NUMBER IDENTIFICATION	INSPECTION INTERVAL	ASME SEC. XI CATGY NDE ITEM NO METH	PLAN STATUS			PRESERVICE YEAR	INSTRUCTIONS **CALIBRATION BLOCK**
			FIRST PERIOD	SECOND PERIOD	THIRD PERIOD		
			1 2	1 2 3	1 2		

CONTAINMENT SPRAY CP2-CTAHCs-01

097420 TCX-2-1180-1-2 C-A UT 1 - - - X - - - 92
 CT HX1 SHELL TO FLANGE WELD C1.10

TBX-31

097430 TCX-2-1180-1-3 C-B UT 1 - - - X - - - 92
 CT HX1 INLET NOZZLE TO SHELL C2.21 PT
 WELD

TBX-15, SS-CB-1

097444 TCX-2-1180-1-4 C-B UT 1 - - - X - - - 92
 CT HX1 OUTLET NOZZLE TO SHELL C2.21 PT
 WELD

TBX-15, SS-CB-1

CONTAINMENT SPRAY TCX-CTAHCs-01

097450 TCX-2-1180-1-1WS C-C PT 1 - - - X - - - 92
 CT HX1 WELD SUPPORT C3.10

097460 TCX-2-1180-1-2WS C-C PT 1 - - - X - - - 92
 CT HX1 WELDED SUPPORT C3.10

MAIN STEAM 32-MS-2-001-1303-2

100300 TCX-2-2100-27 C-F-2 UT 1 C - - - - - 92
 VALVE TO MOMENT RESTRAINT C5.51 MT
 R108 877SB

TBX-33

COMANCHE PEAK UNIT 2
 INSERVICE INSPECTION PLAN
 CLASS 3 SCHED/COMPL COMPONENTS

SUMMARY EXAMINATION AREA NUMBER IDENTIFICATION	INSPECTION INTERVAL ASME SEC. XI CATGY NDE ITEM NO METH	PLAN STATUS			PRESERVICE YEAR	INSTRUCTIONS **CALIBRATION BLOCK**
		FIRST PERIOD	SECOND PERIOD	THIRD PERIOD		
		1 2	1 2 3	1 2		

COMPONENT COOLING

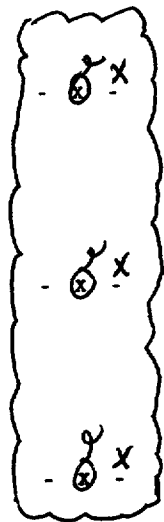
871650	CC-2-AB-017-H12 CC-2-008-719-A33A R174 800AB	D-A VT-3 1 - - D1.20	C - - - -	NA	WELDED ATTACHMENT
872000	CC-2-AB-018-H3 CC-2-040-403-A33R R180 800AB	F-C VT-3 1 - - NOTE 1	- X - - -	NA	BOX
872050	CC-2-AB-018-H3 CC-2-040-403-A33R R180 800AB	D-A VT-3 1 - - D1.20	- X - - -	NA	WELDED ATTACHMENT
872100	CC-2-AB-018-H4 CC-2-040-404-A33R R180 800AB	F-C VT-3 1 - - NOTE 1	- X - - -	NA	STRUT
872150	CC-2-AB-018-H4 CC-2-040-404-A33R R180 800AB	D-A VT-3 1 - - D1.20	- X - - -	NA	WELDED ATTACHMENT
872200	CC-2-AB-018-H5 CC-2-048-401-A33R R170 800AB	F-C D-A D1.20 NOTE 1	VT-3 1 - - - X - - -	NA	STRUT
872900	CC-2-AB-018-H12 CC-2-048-410-A33S R180 800AB	F-C VT-3 1 - - NOTE 1	C - - - -	NA	SPRING

COMANCHE PEAK UNIT 2
 INSERVICE INSPECTION PLAN
 CLASS 3 SCHED/COMPL COMPONENTS

SUMMARY EXAMINATION AREA NUMBER IDENTIFICATION	INSPECTION INTERVAL	PLAN STATUS						PRESERVICE YEAR	INSTRUCTIONS **CALIBRATION BLOCK**	
		ASME SEC. XI CATGY NDE ITEM NO METH	VT-3	FIRST PERIOD		SECOND PERIOD				THIRD PERIOD
				1	2	1	2			3
				O U T A G E						1 2

COMPONENT COOLING

877150	CC-2-AB-027A-H8 CC-2-066-700-A33A R180 800AB	D-A	VT-3	1	-	-	C	-	-	-	NA	WELDED ATTACHMENT
877200	CC-2-AB-027A-H9 CC-2-068-700-A33A R180 800AB	F-C	VT-3	1	-	-	C	-	-	-	NA	BOX
877250	CC-2-AB-027A-H9 CC-2-068-700-A33A R180 800AB	D-A	VT-3	1	-	-	C	-	-	-	NA	WELDED ATTACHMENT
878700	CC-2-AB-032-H9 CC-2-011-708-A63R X-241	F-C	VT-3	1	-	-	-	-	-	X	NA	U-BOLT
879800	CC-2-AB-033-H5 CC-2-007-010-A63R X-241	F-C	VT-3	1	-	-	-	-	-	X	NA	STRUT
879850	CC-2-AB-033-H5 CC-2-007-010-A63R X-241	D-A	VT-3	1	-	-	-	-	-	X	NA	WELDED ATTACHMENT
880200	CC-2-AB-033-H9 CC-2-007-017-A63R X-241	F-C	VT-3	1	-	-	-	-	-	X	NA	STRUT



COMANCHE PEAK UNIT 2
 INSERVICE INSPECTION PLAN
 CLASS 3 SCHED/COMPL COMPONENTS

SUMMARY EXAMINATION AREA NUMBER IDENTIFICATION	INSPECTION INTERVAL	PLAN STATUS						PRESERVICE YEAR	INSTRUCTIONS **CALIBRATION BLOCK**
		ASME SEC. XI CATGY NDE ITEM NO METH	FIRST PERIOD	SECOND PERIOD	THIRD PERIOD	O U T A G E			
			1 2	1 2 3	1 2				

COMPONENT COOLING



880250	CC-2-AB-033-H9 CC-2-007-017-A63R X-241	D-A VT-3 D1.20	1 - -	- - -	- - -	- - -	NA	WELDED ATTACHMENT
880700	CC-2-AB-038-H3 CC-2-164-403-A53S	F-C VT-3 NOTE 1	1 - -	- - -	- - X	- - -	NA	SPRING
880750	CC-2-AB-038-H3 CC-2-164-403-A53S	D-A VT-3 D1.20	1 - -	- - -	- - X	- - -	NA	WELDED ATTACHMENT
881000	CC-2-AB-038-H6 CC-2-164-407-A63K X-235	F-C VT-3 NOTE 1	1 - -	- - -	- - X	- - -	NA	SNUBBER
882900	CC-2-AB-039-H9 CC-2-156-710-A53R X-194	F-C VT-3 NOTE 1	1 - -	- - -	- X -	- - -	NA	STRUT
882950	CC-2-AB-039-H9 CC-2-156-710-A53R X-194	D-A VT-3 D1.20	1 - -	- - -	- X -	- - -	NA	WELDED ATTACHMENT
883000	CC-2-AB-049-H1 CC-2-007-001-A73K X-245	F-C VT-3 NOTE 1	1 - -	- - -	- X -	- - -	NA	SNUBBER

COMANCHE PEAK UNIT 2
 INSERVICE INSPECTION PLAN
 CLASS 3 SCHED/COMPL COMPONENTS

SUMMARY EXAMINATION AREA NUMBER IDENTIFICATION	INSPECTION INTERVAL	PLAN STATUS						PRESERVICE YEAR	INSTRUCTIONS **CALIBRATION BLOCK**
		ASME		FIRST PERIOD	SECOND PERIOD	THIRD PERIOD			
		CATGY	NDE	O U T A G E					
ITEM NO	METH	1	2	1	2	3	1	2	

COMPONENT COOLING

883050	CC-2-AB-049-H1 CC-2-007-001-A73K X-245	D-A D1.20	VT-3	1 - -	- X -	- -	NA	WELDED ATTACHMENT
883400	CC-2-AB-050-H1 CC-2-011-001-A63R X-241	F-C NOTE 1	VT-3	1 - -	- X -	- -	NA	STRUT
883450	CC-2-AB-050-H1 CC-2-011-001-A63R X-241	D-A D1.20	VT-3	1 - -	- X -	- -	NA	WELDED ATTACHMENT
883600	CC-2-AB-050-H3 CC-2-011-003-A73R X-245	F-C NOTE 1	VT-3	1 - -	- X -	- -	NA	STRUT
883650	CC-2-AB-050-H3 CC-2-011-003-A73R X-245	D-A D1.20	VT-3	1 - -	- X -	- -	NA	WELDED ATTACHMENT
885100	CC-2-EC-001-H7 CC-2-035-709-E33S X-115B	F-C NOTE 1	VT-3	1 - -	- X -	- -	NA	SPRING
885150	CC-2-EC-001-H7 CC-2-035-709-E33S X-115B	D-A D1.20	VT-3	1 - -	- X -	- -	NA	WELDED ATTACHMENT



COMANCHE PEAK UNIT 2
 INSERVICE INSPECTION PLAN
 CLASS 3 SCHED/COMPL COMPONENTS

SUMMARY EXAMINATION AREA NUMBER IDENTIFICATION	INSPECTION INTERVAL ASME SEC. XI CATGY NDE ITEM NO METH	PLAN STATUS			PRESERVICE YEAR	INSTRUCTIONS **CALIBRATION BLOCK**
		FIRST PERIOD	SECOND PERIOD	THIRD PERIOD		
		O U T A G E				
		1 2	1 2 3	1 2		

COMPONENT COOLING

885400 CC-2-EC-001-H10
 CC-2-035-714-A33A
 X-180

F-C VT-3 1 - -
 NOTE 1



NA BOX

885450 CC-2-EC-001-H10
 CC-2-035-714-A33A
 X-180

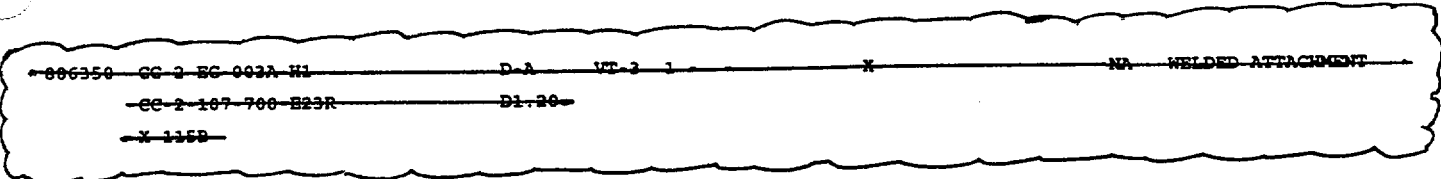
D-A VT-3 1 - -
 D1.20

NA WELDED ATTACHMENT

886300 CC-2-EC-003A-H1
 CC-2-107-700-E23R
 X-115B

F-C VT-3 1 - -
 NOTE 1

NA STRUT



887000 CC-2-EC-004-H1
 CC-2-105-401-E23R
 X-115B

F-C VT-3 1 - -
 NOTE 1



NA STRUT

887050 CC-2-EC-004-H1
 CC-2-105-401-E23R
 X-115B

D-A VT-3 1 - -
 D1.20

NA WELDED ATTACHMENT

888300 CC-2-FB-002-H1
 CC-2-126-004-F43K

F-C VT-3 1 - -
 NOTE 1

NA SNUBBER

COMANCHE PEAK UNIT 2
 INSERVICE INSPECTION PLAN
 CLASS 3 SCHED/COMPL COMPONENTS

SUMMARY EXAMINATION AREA NUMBER IDENTIFICATION	INSPECTION INTERVAL	PLAN STATUS			PRESERVICE YEAR	INSTRUCTIONS **CALIBRATION BLOCK**
		ASME SEC. XI CATGY NDE ITEM NO METH	FIRST PERIOD	SECOND PERIOD		
			1 2	1 2 3	1 2	

COMPONENT COOLING

902550	CC-2-SB-047-H2 CC-2-008-402-S33R R063 800SB	D-A VT-3 D1.20	1 - -	- X - - -	NA	WELDED ATTACHMENT
903100	CC-2-SB-048-H3 CC-2-159-409-S53R R088 839SB	F-C VT-3 NOTE 1	1 - -	- (X) X - -	NA	STRUT
903150	CC-2-SB-048-H3 CC-2-159-409-S53R R088 839SB	D-A VT-3 D1.20	1 - -	- (X) X - -	NA	WELDED ATTACHMENT
903800	CC-2-SB-052-H3 CC-2-155-408-S53R R088 839SB	F-C VT-3 NOTE 1	1 - -	- (X) X - -	NA	STRUT
903850	CC-2-SB-052-H3 CC-2-155-408-S53R R088 839SB	D-A VT-3 D1.20	1 - -	- (X) X - -	NA	WELDED ATTACHMENT
904000	CC-2-SB-052-H5 CC-2-202-401-S53A 2-088	F-C VT-3 NOTE 1	1 - -	- - - X -	NA	BOX
904050	CC-2-SB-052-H5 CC-2-202-401-S53A 2-088	D-A VT-3 D1.20	1 - -	- - - X -	NA	WELDED ATTACHMENT



4.4 EDDY CURRENT

Eddy current testing (ET) of the steam generator tubes, Examination Category B-Q, Item No. B16.20, shall be accomplished to the extent and frequency defined in Technical Specification Section 4.0.6; results of the examination shall be evaluated against acceptance criteria contained within this section. The need for corrective action including expanded examination samples shall also be governed by the Technical Specifications, as shall the reporting requirements. All other examination parameters shall be in accordance with ASME Section XI, Appendix IV. These measures will provide compliance with the inspection requirements of Reg. Guide 1.83.

The provisions of Code Case N-401-1 have been adopted to allow recording of eddy current data using digitized collection and storage as an alternative to the requirement of ASME Section XI, Appendix IV for magnetic tape and strip chart recording.

Additionally, to address issues raised in NRC Bulletin 85-02, the following actions shall be taken.

85-02

Where ET indications are detected in the free span of peripheral tubes a visual exam shall be conducted unless it can be determined that the indication did not result from damage by a loose part or foreign object.

APPENDIX A

INDEX OF RELIEF REQUESTS

<u>RR</u>	<u>Subject</u>	<u>Submittal Letter</u>	<u>NRC Evaluation</u>	<u>Remarks</u>
A-1	Pressure Retaining Bolted Connections	TXX-94332	Approved - NRR-9044 (06/16/95)	
A-2 Rev. 1	Insulated Bolted Connections	TXX-94332	Approved - NRR-9044 (06/16/95)	
B-1	Reactor Vessel Closure Head Welds	TXX-95042	Approved - NRR-9156 (12/28/95)	
B-2	Circumferential Piping Weld (TCX-1-4103-1)	TXX-95042	Approved - NRR-9156 (12/28/95)	
B-3	Branch Pip Connection Weld (TCX-1-4104-1)	TXX-96426		
B-4	Pressurizer Lower Head to Shell and Surge Nozzle to Vessel Welds (TCX-1-2100-1, 11)	TXX-98058		
B-5	Steam Generator Tubesheet to Channel Head Weld (TCX-1-3100-2-1)	TXX-98058		
B-6	Circumferential Piping Weld (TCX-1-4201-7)	TXX-98058		
C-1	Excess Letdown Heat Exchanger Weld (TCX-2-1110-1)	TXX-95042	Approved - NRR-9156 (12/28/95)	
C-2	Regenerative Heat Exchanger Welds (TCX-2-1150-5, 6)	TXX-98058		
C-3	Piping Integral Welded Attachment (TCX-2-2301-H1)	TXX-98058		
C-4	Containment Spray Heat Exchanger Weld (TCX-2-1180-1-2)			

**CPSES UNIT 2
RELIEF REQUEST
C-4**

A. Item(s) for which relief is requested:

TCX-2-1180-1-2
Containment Spray Heat Exchanger Shell to Flange Weld

B. Item(s) Code Class:

2

C. Examination requirement from which relief is requested:

The requirement for volumetric examination of 100% of the weld length as described in Table IWC-2500-1, Examination Category C-A, Item No.C1.10.

D. Basis for relief:

For weld TCX-2-1180-1-2, interferences from the heat exchanger welded support pads preclude the complete ultrasonic examination of the volume required by Fig. IWC-2500-1. Approximately 14% of the weld length did not receive the full code required examination coverage. See pages 2 and 3 for weld location and examination area configuration for weld TCX-2-1180-1-2.

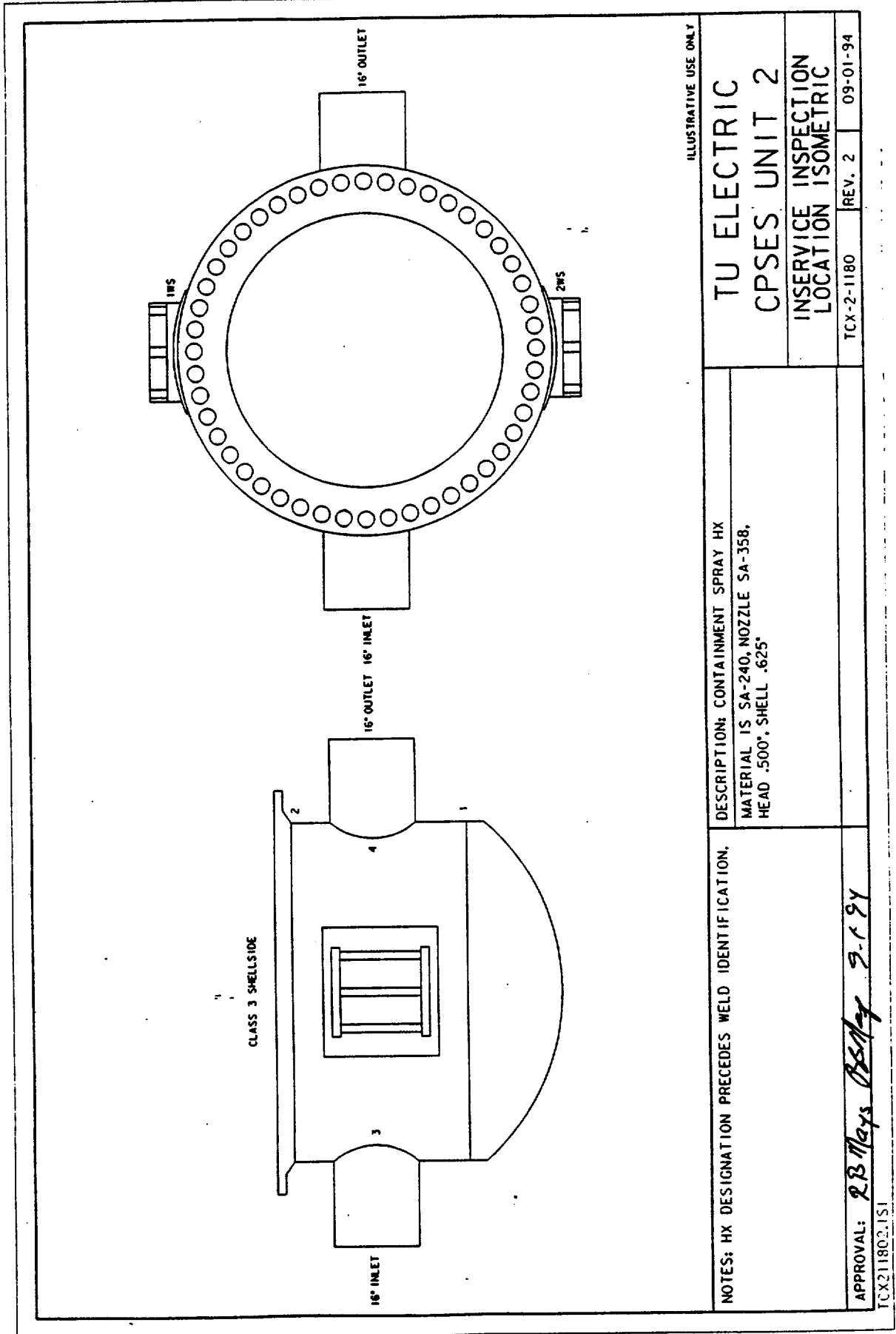
There were no recordable indications identified by the best effort volumetric examination performed on the accessible portions of the weld length.

E. Alternate examinations:

None

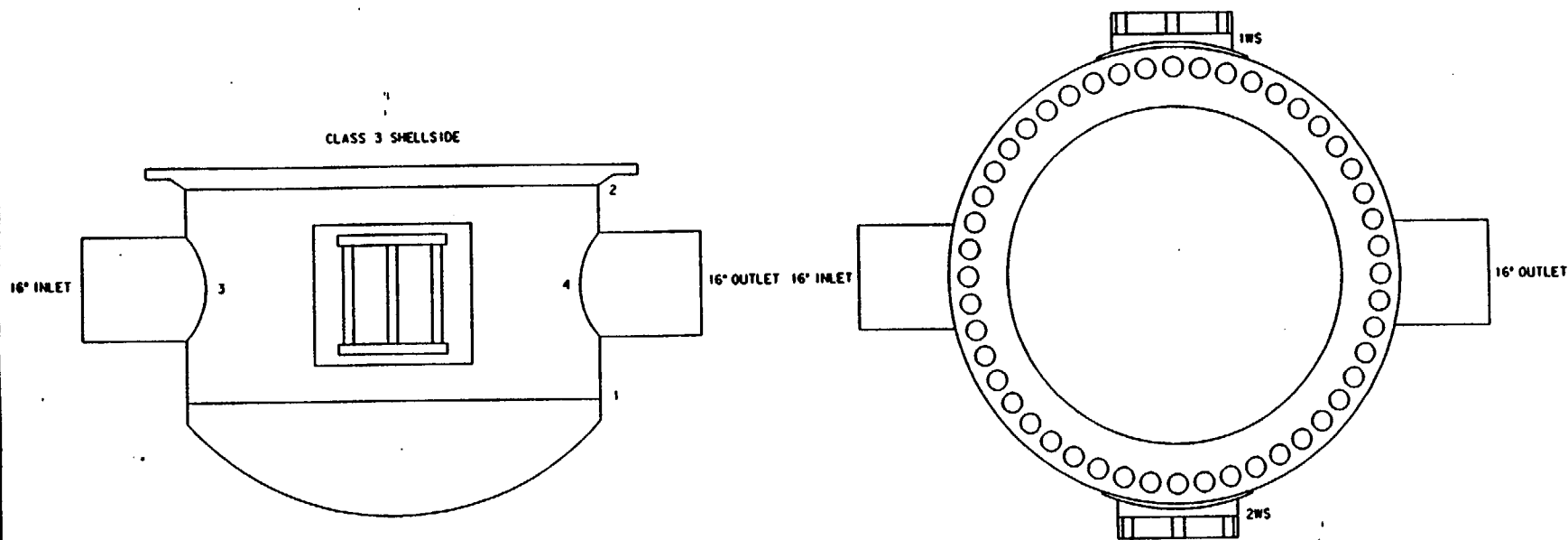
F. Anticipated impact on the overall level of plant quality and safety:

None



ILLUSTRATIVE USE ONLY

NOTES: HX DESIGNATION PRECEDES WELD IDENTIFICATION.	DESCRIPTION: CONTAINMENT SPRAY HX	TU ELECTRIC
MATERIAL IS SA-240, NOZZLE SA-358, HEAD .500", SHELL .625"	TU ELECTRIC	CPSES UNIT 2
APPROVAL: <i>RB Mays</i> <i>2-1-94</i>	INSERVICE INSPECTION LOCATION ISOMETRIC	INSERVICE INSPECTION LOCATION ISOMETRIC
TCX211802.1S1	REV. 2	REV. 2 09-01-94



ILLUSTRATIVE USE ONLY

NOTES: HX DESIGNATION PRECEDES WELD IDENTIFICATION.

DESCRIPTION: CONTAINMENT SPRAY HX
 MATERIAL IS SA-240, NOZZLE SA-358,
 HEAD .500", SHELL .625"

TU ELECTRIC
 CPSES UNIT 2

INSERVICE INSPECTION
 LOCATION ISOMETRIC

APPROVAL: *RB Mays* *BS Mays* 9-1-94

TCX-2-1180

REV. 2

09-01-94

TCX211802.IS1



WESTINGHOUSE NUCLEAR SERVICES DIVISION

REPORT NO. UT-89-002

PAGE 2 OF 2

LIMITATION TO EXAMINATION

PLANT Comanche Peak UNIT 2 SKETCH TCX-2-1180 Rev. 2

SYST/COMP CONTAINMENT SPRAY PROCEDURE TX-ISI-214 Rev. 2 FC N/A

EXAMINER DeBusso, James *James R. DeBusso* LEVEL III DATE 3/14/99

EXAMINER N/A LEVEL N/A DATE _____

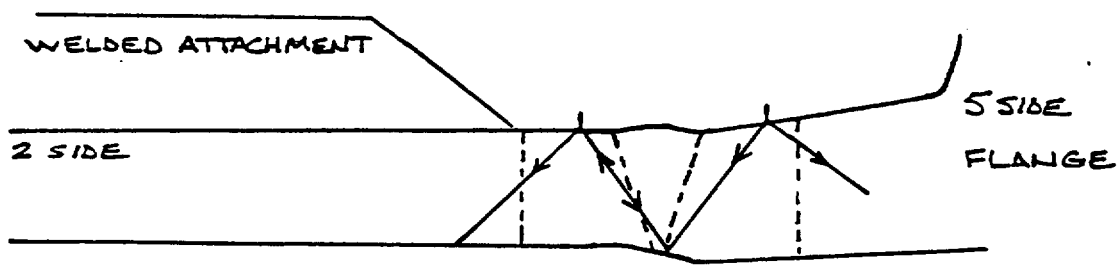
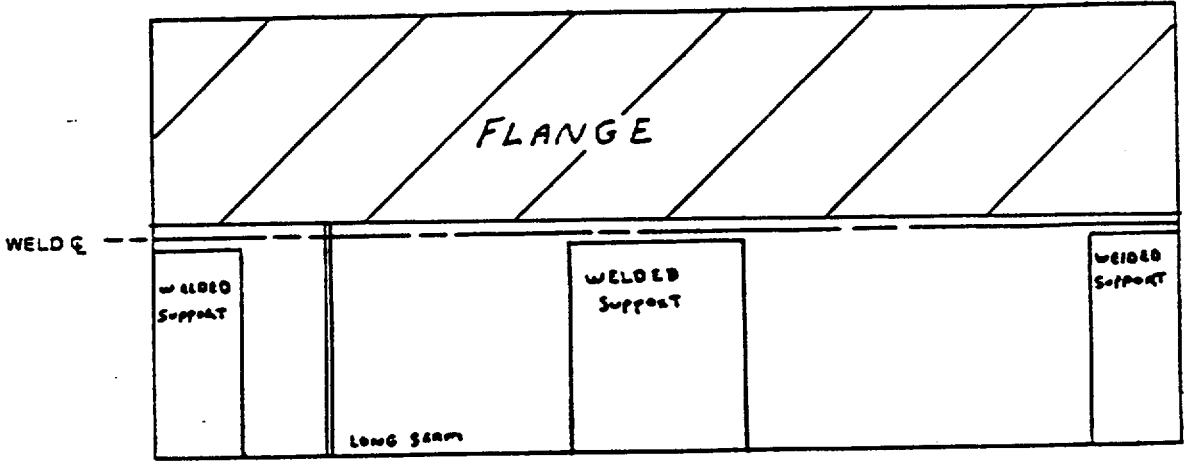
COMPONENT ID TCX-2-1180-1-2

RELATED TO MT PT UT VT

PROVIDE SUFFICIENT INFORMATION TO DESCRIBE SIZE, LOCATION AND TYPE OF LIMITATION.

COMMENTS/SKETCH/DETAILS

14% NOT EXAMINED DUE TO WELDED SUPPORTS.



TU ELECTRIC REVIEW / DATE <i>John DeBonis</i> DeBonis, John 4/12/99	TU ELECTRIC LEVEL III REVIEW / DATE <i>James Ragan</i> Ragan, James 4/19/99	ANS REVIEW / DATE Hair, Joe C. <i>Joe C. Hair</i> 4/12/99
---	---	--

ICR NO.	AFFECTED PAGE(S)	DESCRIPTION OF CHANGE
ISI-2R1-01	Section 2.0 RHR dwg., Sh. 1 & 2 Section 5.0 Table 9 page 115	Incorporate DM 94-45
ISI-2R1-02	Section 4.1 pg's 6, 37, 40, 43, 46 52, 61, 69, 70, 71, 74 Section 4.2 pg. 119 App. A pg. 2 App. B pg. 2	Change cal blocks, reschedule exams add Relief Request
ISI-2R1-03	Section 2 CS dwg. Sh. 12 of 13 Section 5, Table 9 pg's 25, 31 and notes App. B pg. 2	Replace pages
ISI-2R2-01	Section 4.1, 4.2 and 4.3 pages 35, 42, 51, 61, 69, 76, 172, 199, 200, 201, 212, 213, 225, 226, 229, 230, 237, 238; App. A pg. 2, RR's B-4, 5, 6, C-2, 3; App. B pg 2; App. E pg 3	Change cal blocks, reschedule exams, add relief requests, update sketch rev. #'s
ISI-2R3-01	Section 4.2 and 4.3 pages 82, 212, 214, 215, 216, 217, 226 Section 4.4 page 1	Change cal blocks, reschedule exams, add relief request, corrected Cat and Item no.'s