

May 13, 2026

Docket Nos.: 50-321
50-366

NL-26-0193

U. S. Nuclear Regulatory Commission
ATTN: Document Control Desk
Washington, DC 20555-0001

Edwin I. Hatch Nuclear Plant – Units 1 and 2
Annual Radiological Environmental Operating Report for 2025

Ladies and Gentlemen:

In accordance with section 5.6.2 of the Edwin I. Hatch Nuclear Plant (HNP) – Units 1 and 2 Technical Specifications, Southern Nuclear Operating Company hereby submits the enclosed Annual Radiological Environmental Operating Report (AREOR) for 2025.

This letter contains no NRC commitments. If you have any questions, please contact Ryan Joyce at 205.992.6468.

Respectfully submitted,

Jamie M. Coleman
Director, Regulatory Affairs
Southern Nuclear Operating Company

JMC/btr/cbg

Enclosure: HNP Units 1-2 2025 AREOR

cc: Regional Administrator, Region II
NRR Project Manager – Hatch 1&2
Senior Resident Inspector – Hatch 1&2
R-Type: CHA02.004
State of Georgia Department of Natural Resources

Edwin I. Hatch Nuclear Plant – Units 1 and 2
Annual Radiological Environmental Operating Report for 2025
Enclosure to NL-26-0193
HNP Units 1-2 2025 AREOR



2025 Annual Radiological Environmental Operating Report

TABLE OF CONTENTS

1.0 LIST OF ACRONYMS AND DEFINITIONS 3

2.0 EXECUTIVE SUMMARY 5

 2.1 Summary Of Conclusions: 5

3.0 INTRODUCTION..... 6

4.0 SITE DESCRIPTION AND SAMPLE LOCATIONS..... 7

5.0 MAPS OF COLLECTION SITES 14

6.0 REPORTING LEVELS FOR RADIOACTIVITY CONCENTRATIONS IN ENVIRONMENTAL SAMPLES..... 17

7.0 SAMPLING PROGRAM, PROGRAM MODIFICATION AND INTERPRETATION OF RESULTS 18

 7.1 Program Modifications 19

 7.2 Environmental Direct Radiation Dosimetry Sample Results 20

 7.3 Air Particulate and Radioiodine Sample Results 23

 7.4 Waterborne Sample Results 25

 7.5 Ingestion Pathway Sample Results..... 27

8.0 LAND USE CENSUS EXPOSURE PATHWAY 28

9.0 SAMPLE DEVIATIONS, ANOMALIES AND UNAVAILABILITY 29

10.0 OTHER SUPPLEMENTAL INFORMATION 30

 10.1 NEI 07-07 Onsite Radiological Groundwater Monitoring Program..... 30

 10.2 Corrections to Previous Reports 30

11.0 Bibliography 31

TABLES

Table 1, Radiological Environmental Sampling Program – Exposure Pathway – Direct Radiation 8

Table 2, Radiological Environmental Sampling Program – Exposure Pathway - Airborne..... 9

Table 3, Radiological Environmental Sampling Program – Exposure Pathway - Waterborne..... 10

Table 4, Radiological Environmental Sampling Program – Exposure Pathway - Ingestion..... 11

Table 5, REMP Sampling Locations – Direct Radiation..... 12

Table 6, Reporting Levels for Radioactivity Concentrations in Environmental Samples 17

Table 7, Minimum Detectable Concentration (MDC) 17

Table 8, Program Modifications 19

Table 9, Land Use Census – Nearest Residence within 5 miles 28

Table 10, Sample Deviation Summary..... 29

FIGURES

Figure 1, Potential exposure pathways to Members of the Public due to Plant Operations 6

Figure 2, REMP Sample Locations (Near Field/Site Boundary) 14

Figure 3, REMP Sample Locations (Far Field)..... 15

Figure 4, REMP Sample Locations (Onsite)..... 16

Figure 5, Average Quarterly Dose from Direct Radiation in Select Locations..... 21

Figure 6: Air Particulate: Analysis for Gross Beta, Average Mean for All Indicator Vs. Control..... 24

Figure 7: Surface Water Tritium Results 25

ATTACHMENTS

Attachment 1, Data Table Summary 33

Attachment 2, Complete Data Table for All Analysis Results Obtained In 2025 37

Attachment 3, Cross Check Intercomparison Program..... 73

Attachment 4, Environmental Direct Radiation Dosimetry Sample Results 76

Annual Radiological Environmental Operating Report	YEAR: 2025	Page 3 of 79
Company: Southern Nuclear	Plant: Hatch Nuclear Plant	

1.0 LIST OF ACRONYMS AND DEFINITIONS

1. Airborne Activity Sampling: Continuous sampling of air through the collection of particulates and radionuclides on filter media.
2. ARERR: Annual Radioactive Effluent Release Report
3. AREOR: Annual Radiological Environmental Operating Report
4. BWR: Boiling Water Reactor
5. Composite Sample: A series of single collected portions (aliquots) analyzed as one sample. The aliquots making up the sample are collected at time intervals that are very short compared to the composite period.
6. Control: A sampling station in a location not likely to be affected by plant effluents due to its distance and/or direction from the station.
7. Curie (Ci): A measure of radioactivity; equal to 3.7×10^{10} disintegrations per second, or 2.22×10^{12} disintegrations per minute.
8. Direct Radiation Monitoring: The measurement of radiation dose at various distances from the plant is assessed using Thermoluminescent dosimeters, Optical Stimulated Luminance dosimeters and pressurized ionization chambers.
9. fCi/m³: femto curies per cubic meter.
10. Grab Sample: A single discrete sample drawn at one point in time.
11. Indicator: A sampling location that is likely to be affected by plant effluents due to its proximity and/or direction from the plant.
12. Ingestion Pathway: The ingestion pathway includes milk, fish, drinking water and garden produce. Also sampled (under special circumstances) are other media such as vegetation and animal products such as eggs and meat when additional information about particular radionuclides is needed.
13. ISFSI: Independent Spent Fuel Storage Installation
14. Lower Limit of Detection (LLD): An a priori measure of the detection capability of a radiochemistry measurement based on instrument setup, calibration, background, decay time, and sample volume. An LLD is expressed as an activity concentration. The MDA is used for reporting results. LLD are specified by a regulator, such as the NRC and are typically listed in the ODCM.
15. MDA: Minimum Detectable Activity. For radiochemistry instruments, the MDA is the a posteriori minimum concentration that a counting system detects. The smallest concentration or activity of radioactive material in a sample that will yield a net count above instrument background and that is detected with 95% probability, with only five % probability of falsely concluding that a blank observation represents a true signal.
16. MDC: Minimum Detectable Concentration. Essentially synonymous with MDA for the purposes of radiological monitoring.
17. Mean: The average, i.e., the sum of results divided by the number of results.
18. Microcurie: 3.7×10^4 disintegrations per second, or 2.22×10^6 disintegrations per minute.

Annual Radiological Environmental Operating Report	YEAR: 2025	Page 4 of 79
Company: Southern Nuclear	Plant: Hatch Nuclear Plant	

19. MWe: Megawatts Electric
20. MWt: Megawatts Thermal
21. NA: Not Applicable
22. NEI: Nuclear Energy Institute
23. NIST: National Institute of Standards and Technology.
24. NPDES: National Pollutant Discharge Elimination System.
25. SPDES: State Pollution Discharge Elimination System
26. NRC: Nuclear Regulatory Commission
27. ODCM: Offsite Dose Calculation Manual
28. OSLD: Optical Stimulated Luminance Dosimeter
29. pCi/L: picocuries / Liter
30. Protected Area: An area encompassed by physical barriers and to which access is controlled.
31. PWR: Pressurized Water Reactor
32. REMP: Radiological Environmental Monitoring Program
33. Restricted Area: An area, access to which is limited by the licensee for the purpose of protecting individuals against undue risks from exposure to radiation and radioactive materials.
34. SLC: Selected Licensee Commitment
35. SA: Sample Anomalies
36. SD: Sample Deviation
37. SPDES: State Pollutant Discharge Elimination System.
38. SW: Surface Water
39. TRM: Technical Requirement Manual
40. TS: Technical Specification
41. US: Unavailable Samples
42. NDM: Non-Detectable Measurement

Annual Radiological Environmental Operating Report	YEAR: 2025	Page 5 of 79
Company: Southern Nuclear	Plant: Hatch Nuclear Plant	

2.0 EXECUTIVE SUMMARY

The Hatch Nuclear Plant Radiological Environmental Monitoring Program (REMP) was established prior to the station becoming operational to provide information on background radiation present in the area. The goal of the HNP REMP is to evaluate the impact of the station on the environment. Environmental samples from different media are monitored as part of the program in accordance with the Offsite Dose Calculation Manual (ODCM). The program compares data from indicator locations near the plant, to control locations farther away from the site to assess operation impacts.

The Annual Radiological Environmental Operating Report (AREOR) provides data obtained through analyses of environmental samples collected at HNP for the reporting period of January 1st through December 31st, 2025. During that period 638 analyses were performed on 612 samples. In assessing all the data gathered for this report and comparing these results with preoperational data and/or 10-year average values, it was concluded that the operation of HNP, did not result in detection of plant related radionuclides in the environment.

2.1 Summary Of Conclusions:

No measurable activities above background levels were detected. All values were consistent with historical results which indicate no adverse radiological environmental impacts associated with the operation of HNP. Naturally occurring radionuclides are present in the Earth's crust and atmosphere and exists in detectable quantities throughout the world. It is common to detect natural occurring radionuclides in many of the samples collected for REMP. Some examples of naturally occurring radionuclides that are frequently seen in samples are potassium-40, beryllium-7, actinium-228 (present as a decay product of radium-228), and radium-226. Additionally, some relatively long-lived anthropogenic radioisotopes, such as strontium-90 and cesium-137, are also seen in some REMP samples; these radionuclides exist in measurable quantities throughout the world as a result of fallout from historic atmospheric nuclear weapons testing. Detailed information on the exposure of the U.S. population to ionizing radiation can be found in NCRP Report No. 160 [1].

3.0 INTRODUCTION

The Radiological Environmental Monitoring Program (REMP) provides data on measurable levels of radiation and radioactive materials in the environment. This program also evaluates the relationship between quantities of radioactive materials released from the plant and resultant doses to individuals from principal pathways of exposure. In this capacity, REMP provides a check on the effluent release program and dispersion modeling to ensure that concentrations in the environment due to radioactive effluents conform to the “As Low as Is Reasonably Achievable” (ALARA) design objectives of 10 CFR 50, Appendix I [2], and implements the requirements of Section IV.B.2 and IV.B.3 of Appendix I. REMP is designed to conform to the Nuclear Regulatory Commission (NRC) Regulatory Guide 4.1 [3], NUREG 1301/1302 [4] [5], and the 1979 NRC Branch Technical Position [6].

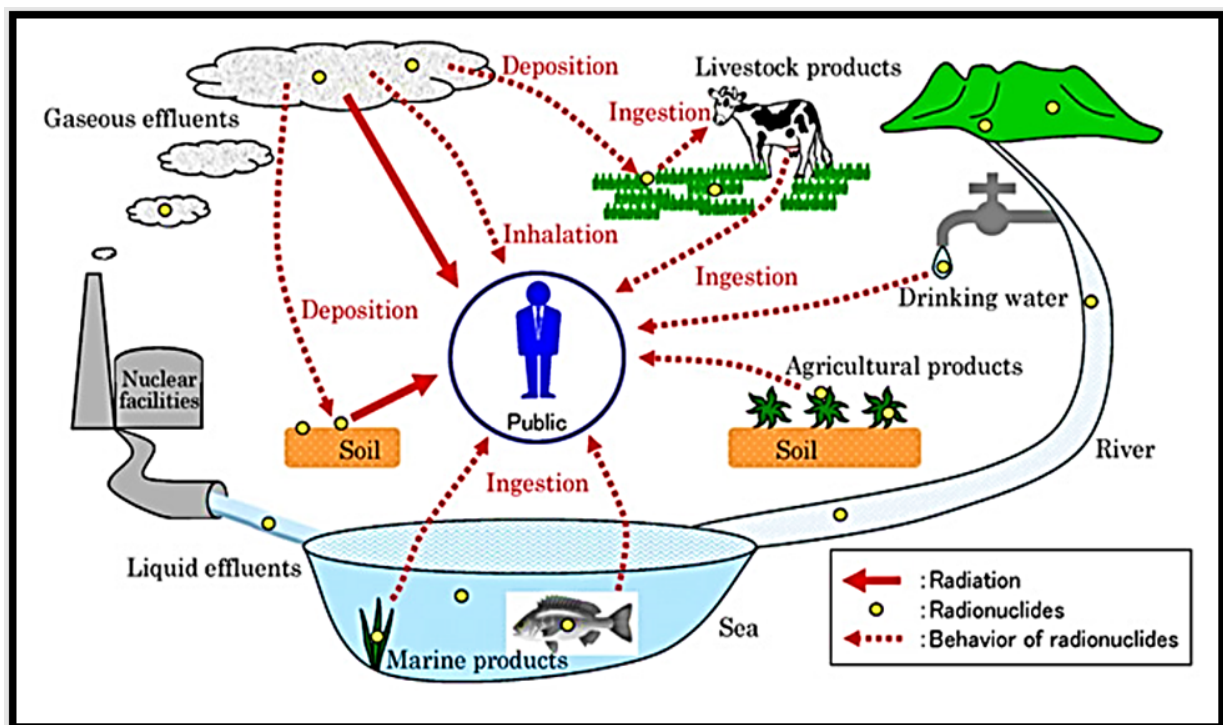


Figure 1, Potential exposure pathways to Members of the Public due to Plant Operations [7]

Quality assurance aspects of the sampling program and OSLD data collection are conducted in accordance with Regulatory Guides 4.15 [8] and 4.13 [9]. REMP also adheres to the requirements of HNP Technical Specifications, and Offsite Dose Calculation Manual (ODCM). These governing documents dictate the environmental sampling, sample analysis protocols, data reporting and quality assurance requirements for the environmental monitoring program.

The Annual Radiological Environmental Operating Report provides summaries of the environmental data from exposure pathways, interpretations of the data, and analyses of trends of the results. Routinely monitored pathways include ingestion, inhalation, and direct radiation. Routes of exposure are based on site specific information such as meteorology, receptor locations, and water usage around the plant.

4.0 SITE DESCRIPTION AND SAMPLE LOCATIONS

Hatch Nuclear Plant is a commercial nuclear power plant that is owned by Georgia Power Company (GPC), Oglethorpe Power Corporation, the Municipal Electric Authority of Georgia, and Dalton Utilities. The plant is in Appling County, Georgia on the southwest side of the Altamaha River near Baxley, Georgia. Unit 1, a General Electric Company Boiling Water Reactor (BWR) with a licensed core thermal output of 2,804 MegaWatts (MWt), began commercial operation on December 31, 1975. Unit 2, also a General Electric Company BWR rated for 2,804 MWt, began commercial operation on September 5, 1979. The pre-operational stage of the REMP began with the establishment and activation of the environmental monitoring stations in January of 1972. The operational stage of the REMP began on September 12, 1974, with Unit 1 initial criticality. HNP sampling media are selected based on site specific information such as meteorology, receptor locations, and water usage around the plant. Sampling and analysis frequencies are documented in the Offsite Dose Calculation Manual and site procedures. Required sampling, analysis frequencies and location of sample collected are captured in the following tables and figures:

- Table 1, Radiological Environmental Sampling Program – Exposure Pathway – Direct Radiation
- Table 2, Radiological Environmental Sampling Program – Exposure Pathway - Airborne
- Table 3, Radiological Environmental Sampling Program – Exposure Pathway - Waterborne
- Table 4, Radiological Environmental Sampling Program – Exposure Pathway - Ingestion
- Table 5, REMP Sampling Locations – Direct Radiation
- Figure 2, REMP Sample Locations (Near Field/Site Boundary)
- Figure 3, REMP Sample Locations (Far Field)
- Figure 4, REMP Sample Locations (Onsite)

RADIOLOGICAL ENVIRONMENTAL SAMPLING PROGRAM REQUIREMENTS

Table 1, Radiological Environmental Sampling Program – Exposure Pathway – Direct Radiation

Requirement	Sample Location (Location Number) Description, Distance, and Direction	Sampling Collection/ Frequency	Type and Frequency of Analyses
<u>Direct Radiation</u> 33 Routine monitoring stations	See Table 5	Quarterly	Gamma dose/Quarterly

Table 2, Radiological Environmental Sampling Program – Exposure Pathway - Airborne

Requirement	Sample Location (Location Number) Description, Distance, and Direction	Sampling Collection/ Frequency	Type and Frequency of Analyses
<p><u>Airborne Radioiodine and Particulates¹</u></p> <p>Samples from 4 locations</p>	<p>(103) Inner Ring NE 1.8 mi. (107) Inner Ring SE 1.2 mi. (112) Inner Ring WSW 1 mi. (116) Inner Ring NNW 1.6 mi. (304) State Prison ENE 11.2 mi. (309) Baxley Substation S 10 mi.</p>	<p>Continuous sampler operation with sample collection weekly</p>	<p>Particulate sampler: Analyze for gross beta radioactivity \geq 24 hours following filter change / Weekly. Perform gamma isotopic analysis on each sample when gross beta activity is $>$ 10 times the yearly mean of control samples. Perform gamma isotopic analysis on composite sample (by location)/Quarterly.</p> <p>Radioiodine canister: I-131 analysis/Weekly.</p>

Table 3, Radiological Environmental Sampling Program – Exposure Pathway - Waterborne

Requirement	Sample Location (Location Number) Description, Distance, and Direction	Sampling Collection/ Frequency	Type and Frequency of Analyses
<p><u>Surface Water</u>³ One sample upstream (control) and One sample downstream (indicator)</p>	(170) Upstream WNW ~ 0.6 RM from intake (172) Downstream E ~ 3.0 RM from intake	Composite sample over one-month period ¹	Gamma isotopic ² /Monthly, Composite for H-3 /Quarterly
<p><u>Drinking Water</u>^{3,4} From each of the one to three nearest water supplies which could be affected by HNP discharge: One sample of river water near the intake and One sample of finished water</p>	(170) Upstream WNW ~ 0.6 RM from intake (172) Downstream E ~ 3.0 RM from intake	River water collected near the intake will be a composite sample; the finished water will be a grab sample. These samples will be collected monthly unless the calculated dose due to consumption of the water is greater than 1 mrem/year; then the collection will be biweekly. The collections may revert to monthly should the calculated doses become less than 1 mrem/year	I-131 analysis on each sample when biweekly collections are required. Gross beta and gamma isotopic analysis on each sample; composite (by location) for tritium analysis/Quarterly.
<p><u>Sediment</u>⁸ Samples from 2 locations</p>	(170) Upstream WNW ~ 0.6 RM from intake (172) Downstream E ~ 3.0 RM from intake	Semiannually	Gamma isotopic ² /Semiannually

Table 4, Radiological Environmental Sampling Program – Exposure Pathway - Ingestion

Requirement	Sample Location (Location Number) Description, Distance, and Direction	Sampling Collection/ Frequency	Type and Frequency of Analyses
<u>Milk</u> ⁵ Sample from 1 location	(304) State Prison ENE 10.3 mi.	Biweekly	Gamma isotopic ^{2,7} and I-131 analysis/Biweekly
<u>Fish and Invertebrates</u> ^{6,8} Samples from 2 locations	(170) Upstream WNW ~ 0.6 RM from intake (172) Downstream E ~ 3.0 RM from intake	Semiannually	Gamma isotopic ² analysis on edible portions, each sample/Semiannually
<u>Grass or Leafy Vegetation</u> Samples from 3 locations	(106) Inner Ring ESE 1.1 mi. (112) Inner Ring WSW 1 mi. (416) Emergency News Center NNW 21.0 mi	Monthly during growing season	Gamma isotopic analysis ^{2,7} /Monthly

Notes:

1. Composite sample aliquots were collected at time intervals are very short (e.g., hourly) relative to the compositing period (e.g., monthly) to ensure obtaining a representative sample.
2. Gamma isotopic analysis means the identification and quantification of gamma-emitting radionuclides that may be attributable to the effluents from the facility.
3. If it is found that river water downstream of the plant is used for drinking, drinking water samples will be collected and analyzed as specified herein.
4. A survey shall be conducted annually at least 50 river miles downstream of the plant to identify those who use water from the Altamaha River for drinking. No new drinking water withdrawal permits were issued in 2025.
5. Up to three sampling locations within five miles and in different sectors will be used as available. In 2025, there were no milk farms within 5 miles of Plant Hatch.
6. Commercially or recreationally important fish may be sampled. Clams may be sampled if difficulties are encountered in obtaining sufficient fish samples.
7. If the gamma isotopic analysis is not sensitive enough to meet the Minimum Detectable Concentration (MDC) for I-131, a separate analysis for I-131 may be performed.
8. Station 170 was located approximately 0.6 river miles upstream of the intake structure for river water, 1.1 river miles for sediment and clams, and 1.5 river miles for fish. Station 172 was located approximately 3.0 river miles downstream of the discharge structure for river water, sediment and clams, and 1.7 river miles for fish. The locations from which river water and sediment may be taken can be sharply defined. However, the sampling locations for clams often have to be extended over a wide area to obtain a sufficient quantity. High water adds to the difficulty in obtaining clam samples and may also make an otherwise suitable location for sediment sampling unavailable. A stretch of the river of a few miles or so was generally needed to obtain adequate fish samples. The mile locations given above represent approximations of the locations where samples were collected.

Table 5, REMP Sampling Locations – Direct Radiation

Site #	Location Type	Sector	Distance (miles)	Description
101	Indicator Station	N	1.9	Inner Ring
102	Indicator Station	NNE	2.5	Inner Ring.
103	Indicator Station	NE	1.8	Inner Ring
104	Indicator Station	ENE	1.6	Inner Ring
105	Indicator Station	E	3.7	Inner Ring
106	Indicator Station	EESE	1.1	Inner Ring
107	Indicator Station	SE	1.2	Inner Ring
108	Indicator Station	SSE	1.6	Inner Ring
109	Indicator Station	S	0.9	Inner Ring.
110	Indicator Station	SSW	1.0	Inner Ring
111	Indicator Station	SW	0.9	Inner Ring
112	Indicator Station	WSW	1.0	Inner Ring
113	Indicator Station	W	1.1	Inner Ring
114	Indicator Station	WNW	1.2	Inner Ring
115	Indicator Station	NW	1.1	Inner Ring
116	Indicator Station	NNW	1.6	Inner Ring
304	Control Station	ENE	11.2	State Prison
309	Control Station	S	10	Baxley Substation
416	Control Station	NNW	21.0	Emergency News Center
64	Community Station	WNW	0.8	Roadside Park
201	Community Station	N	5	Outer Ring
202	Community Station	NNE	4.9	Outer Ring
203	Community Station	NE	5	Outer Ring
204	Community Station	ENE	5	Outer Ring
205	Community Station	E	7.2	Outer Ring
206	Community Station	ESE	4.8	Outer Ring

Table 5, REMP Sampling Locations – Direct Radiation

Site #	Location Type	Sector	Distance (miles)	Description
207	Community Station	SE	4.3	Outer Ring
208	Community Station	SSE	4.8	Outer Ring
209	Community Station	S	4.4	Outer Ring
210	Community Station	SSW	4.3	Outer Ring
211	Community Station	SW	4.7	Outer Ring
212	Community Station	WSW	4.4	Outer Ring
213	Community Station	W	4.3	Outer Ring
214	Community Station	WNW	5.4	Outer Ring
215	Community Station	NW	4.4	Outer Ring
216	Community Station	WNNW	4.8	Outer Ring
301	Community Station	N	8.0	Toombs Central School

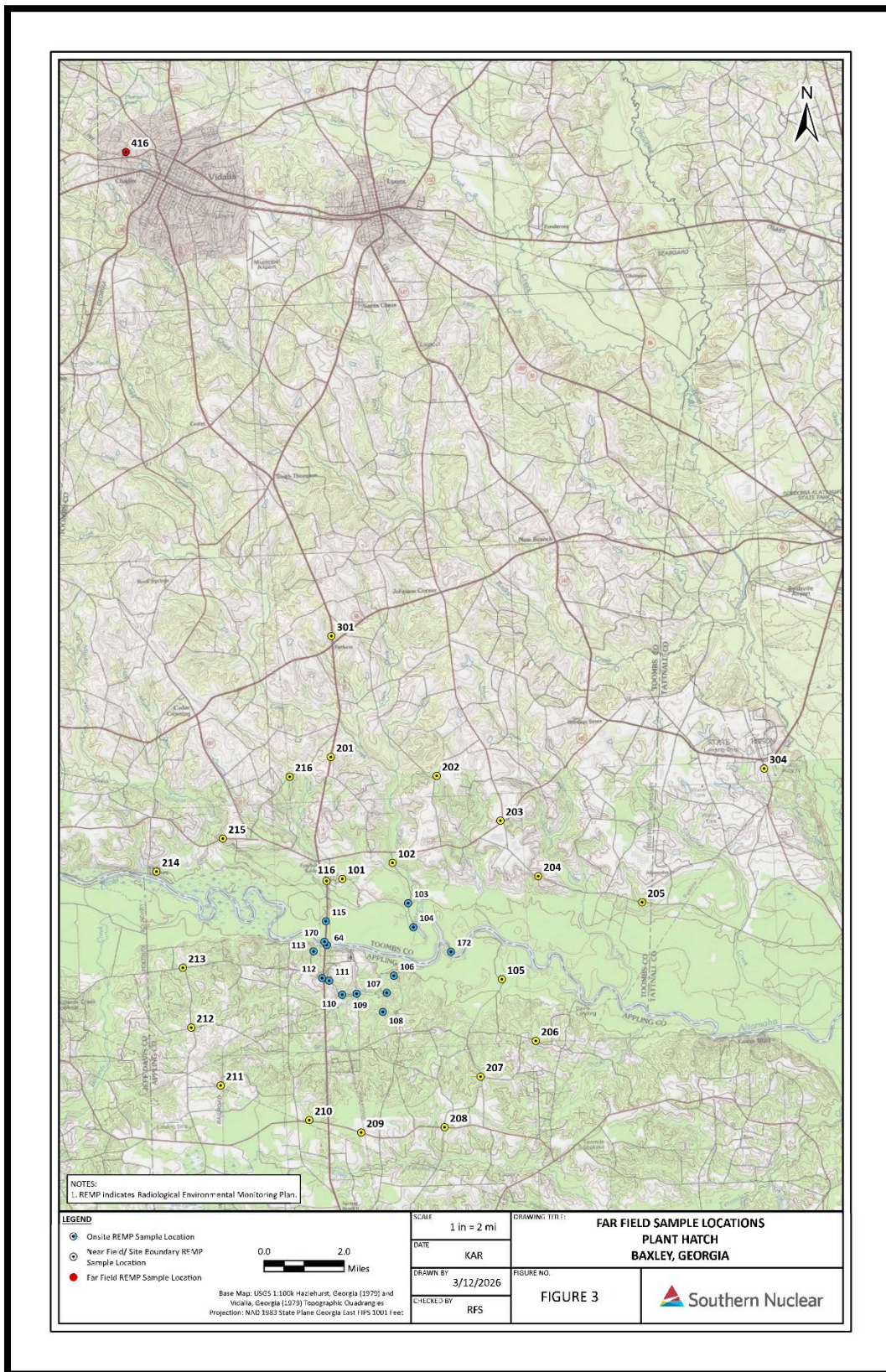


Figure 3, REMP Sample Locations (Far Field)

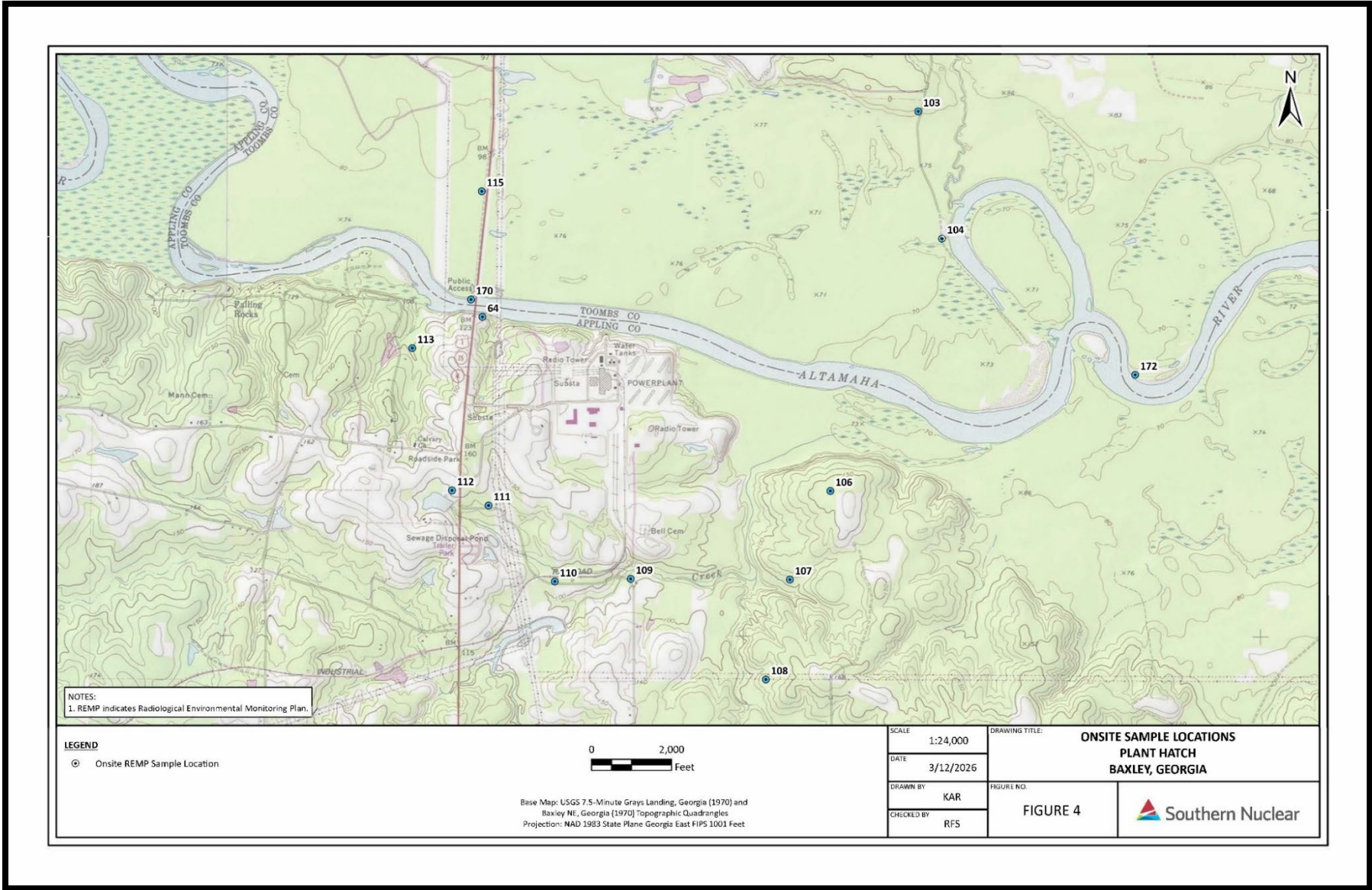


Figure 4, REMP Sample Locations (Onsite)

6.0 REPORTING LEVELS FOR RADIOACTIVITY CONCENTRATIONS IN ENVIRONMENTAL SAMPLE

Table 6, Reporting Levels for Radioactivity Concentrations in Environmental Samples

Radionuclide	Water (pCi/L)	Air Particulates or Gases (pCi/m ³)	Fish (pCi/kg-wet)	Milk (pCi/L)	Food Products (pCi/Kg-wet)
H-3	20,000 ¹	NA	NA	NA	NA
Mn-54	1,000	NA	30,000	NA	NA
Fe-59	400	NA	10,000	NA	NA
Co-58	1,000	NA	30,000	NA	NA
Co-60	300	NA	10,000	NA	NA
Zn-65	300	NA	20,000	NA	NA
Zr-Nb-95	400	NA	NA	NA	NA
I-131	2 ²	0.9	NA	3	100
Cs-134	30	10	1,000	60	1,000
Cs-137	50	20	2,000	70	2,000
Ba-140	200	NA	NA	300	NA
La-140	100	NA	NA	400	NA

Table 7, Minimum Detectable Concentration (MDC)

Radionuclide	Water (pCi/L)	Air Particulates or Gases (pCi/m ³)	Fish (pCi/kg-wet)	Milk (pCi/L)	Food Products (pCi/Kg-wet)	Sediment (pCi/Kg-dry)
Gross Beta	4	0.01	NA	NA	NA	NA
H-3	2,000 ³	NA	NA	NA	NA	NA
Mn-54	15	NA	130	NA	NA	NA
Fe-59	30	NA	260	NA	NA	NA
Co-58, Co-60	15	NA	130	NA	NA	NA
Zn-65	30	NA	260	NA	NA	NA
Zr-95	30	NA	NA	NA	NA	NA
Nb-95	15	NA	NA	NA	NA	NA
I-131	1 ⁴	0.07	NA	1	60	NA
Cs-134	15	0.05	130	15	60	150
Cs-137	18	0.06	150	18	80	180
Ba-140	60	NA	NA	60	NA	NA
La-140	15	NA	NA	15	NA	NA

¹ For drinking water samples: If no drinking water pathway exists, a value of **30,000 pCi/L** may be used.

² If no drinking water pathway exists, a value of **20 pCi/l** may be used

³ If no drinking water pathway exists, a value of **3,000 pCi/L** may be used. Some states may require a lower LLD for drinking water sources-per 40CFR141 Safe drinking water ACT.

⁴ If no drinking water pathway exists, a value of **15 pCi/l** may be used

7.0 SAMPLING PROGRAM, PROGRAM MODIFICATION AND INTERPRETATION OF RESULTS

At most nuclear stations, data was collected prior to plant operation to determine background radioactivity levels in the environment. Annual data is routinely compared to preoperational and/or 10-year average values to determine if changes in the environment are present. Strict comparison is difficult to make due to fallout from historical nuclear weapon testing. Cesium-137 can be routinely found in environmental samples as a results of above ground nuclear weapons testing. It is important to note, levels of Cs-137 in environment are observed to fluctuate, for example as silt distributions shift due to natural erosion and transport processes, Cs-137 may or may not be observed in sediment samples.

In the following sections, results from direct radiation, air, water, and food products analyzed as part of REMP in 2025 will be discussed. Sampling program descriptions and deviations will also be discussed.

In addition to the discussion of the results in the following sections, a summary of the results for 2025 is presented in Attachment 1, Data Table Summary. The analysis results for each of the samples collected is included in Attachment 2, Complete Data Table for All Analysis Results Obtained in 2025, and Attachment 4, Environmental Direct Radiation Dosimetry Sample Results. Attachment 3 contains the Cross Check Intercomparison Program which is mandatory for laboratories performing analyses of REMP samples satisfying the requirements in the Offsite Site Dose Calculation Manual.

7.1 Program Modifications

In January 2025, the following modifications were made to the Hatch Nuclear Plant REMP following a radiological environmental program review. The environmental program review included an evaluation of the data, trends, exposure pathways and applicable media. The program modifications involved the removal of select sampling stations and monitoring requirements that were no longer necessary based on updated program criteria, site-specific conditions, or revised monitoring approaches. Results collected at locations removed from the program during the first quarter of 2025 are included in this report, as applicable.

Table 8 REMP Program Modifications

Pathway/Media	Station ID	Location	Summary
Airborne	107	Inner Ring SE, 1.2 mi	Airborne monitoring station no longer required based on historical data and ODCM Table 4-1 requirements.
Airborne	309	Baxley Substation, S 10.0 mi	Airborne control station no longer required based on historical data and alignment with Regulatory Guide 4.1, Rev. 2.
Airborne	304	State Prison, ENE 11.2 mi	Airborne control station no longer required based on historical data and alignment with Regulatory Guide 4.1, Rev. 2.
Direct Radiation	114	Inner Ring WNW, 1.2 mi	Indicator station removed and replaced by Station 064 in the same sector to maintain coverage at greater distance.
Direct Radiation	304	State Prison, ENE 11.2 mi	Direct radiation control station no longer required following adoption of ANSI/HPS N13.37-2014.
Direct Radiation	309	Baxley Substation, S 10.0 mi	Direct radiation control station no longer required following adoption of ANSI/HPS N13.37-2014.
Direct Radiation	416	Emergency News Center, NNW 21.0 mi	Direct radiation control station no longer required following adoption of ANSI/HPS N13.37-2014.
Milk	304	State Prison, ENE	Milk sampling station removed due to absence of milk animals within 5 miles of the site.

7.2 Environmental Direct Radiation Dosimetry Sample Results

Dose is measured as net exposure (field reading less transit reading) normalized to 91-day quarters. Data is treated and analyzed consistent with ANSI/HPS N13.37-2014, which compares the measured dose for each location to the baseline background dose for that location. Environmental dose rates vary by location, depending on geological and land use considerations, and remain relatively constant for any given location (unless land use changes). Some facilities observe seasonal variation in environmental doses. Baseline Background Doses have been determined for both quarterly and annual measurements at each location using historical field measurements. Minimum Differential Doses for Annual and Quarterly periods have been determined based on 3-times the 90th percentile standard deviation for monitoring locations. Doses that exceed the Minimum Differential Dose value above the Baseline Background Dose are considered to indicate Facility-Related Dose; a quality assurance review is performed to verify that any results indicating Facility-Related Dose are accurate.

ANSI/HPS N13.37-2014 uses the concept of minimum differential dose (MDD), which is the minimum facility-related dose that can be detected above the baseline background. Due to natural background variations and measurement sensitivities and uncertainties, the minimum differential dose is not zero. MDD is calculated based on performance of the dosimetry system in the environment and is about 5 mrem per quarter and 10 mrem per year. If a dosimeter indicates that a dose is greater than background plus the MDD value, then the net dose (above background) is reported as Facility Related Dose. If a dosimeter reports a dose less than background plus MDD, then the net dose is reported as non-detect (ND).

In 2024, SNC implemented American National Standards Institute (ANSI) N13.37-2014 Environmental Dosimetry - Criteria for System Design and Implementation for comparing each OSLD location dose result to its historical background dose.

Direct (external) radiation at Plant Hatch is measured with Optically Stimulated Luminescent dosimeters (OSLD) by placing two OSLD badges at each station. The gamma dose at each station was reported as the average reading of the two badges. The badges were analyzed on a quarterly basis.

Two direct radiation stations were established in each of the 16 compass sectors, to form two concentric rings. The inner ring (Stations 101 through 116) was located near the plant perimeter as shown in Figure 2 and the outer ring (Stations 201 through 216) was located at distances of four to five miles from the plant as shown in Figure 3. The stations in the East sector were a few additional miles away with regards to the other stations in their respective rings due to large swamps making normal access extremely difficult. The 16 stations forming the inner ring were designated as the indicator stations. The two-ring configuration of stations was established in accordance with NRC Branch Technical Position "An Acceptable Radiological Environmental Monitoring Program", Revision 1, November 1979. Other outer ring stations listed in Table 5 including stations 201 through 216, as well as station 301, monitor special interest areas. Station 301 was located near the Toombs Central School. Station 210, in the outer ring, was located near the Altamaha School (the only other nearby school).

Station 114 in the inner ring was removed from the REMP in January of 2025 and was replaced by Station 064 which is in the same sector, but further from the plant. Additionally, the three control stations (Nos. 304, 309 and 416) were located at distances greater than 10 miles from the plant as shown in Figure 2, and were also eliminated from the REMP in January 2025 since the adoption of the ANSI /HP 13.37-2014 no longer required them.

During this calendar year 2025, a total of 136 samples were collected and analyzed in accordance with the requirements in Table 1, Radiological Environmental Sampling Program – Exposure Pathway – Direct Radiation. Attachment 4, Environmental Direct Radiation Dosimetry Sample Results, includes the annual direct radiation dosimetry sample results.

7.2.1 Quarterly Facility Dose

All the quarterly “inner ring” and “outer ring” locations resulted in non-detectable (ND) dose. All the quarterly offsite “special interest” and control locations resulted in ND dose. The average quarterly normalized dose for the “inner ring” (Indicator), “outer ring”, and the Special Interest locations (Roadside Park and Toombs Central School) were all around 13 mrem per standard quarter. The control locations average quarterly normalized dose was about 10.4 mrem for the first quarter of 2025 prior to being removed from the program.

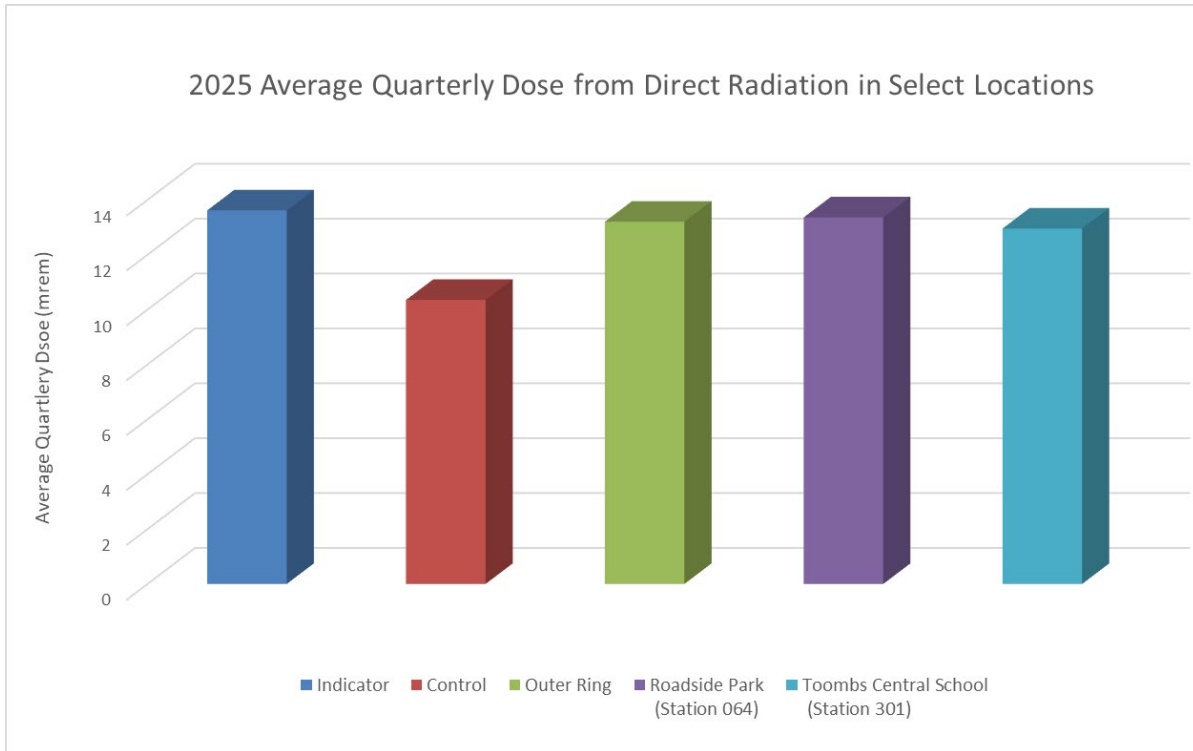


Figure 5, Average Quarterly Dose from Direct Radiation in Select Locations

Figure 5 above shows the normalized quarterly field dose (Mq) averages for all indicator, control, and outer ring stations throughout 2025 and compares them to the annual average field dose at Roadside Park, Station 064 and Toombs Central School, Station 301.

Annual Radiological Environmental Operating Report	YEAR: 2025	Page 22 of 79
Company: Southern Nuclear	Plant: Hatch Nuclear Plant	

7.2.2 Calculated Annual Facility Dose

All the annual “inner ring” and “outer ring” locations resulted in non-detectable (ND) dose. All the annual “special interest” and control locations resulted in ND dose.

7.2.3 OSLD Deviations and Anomalies

There were no deviations or anomalies for OSLDs at Plant Hatch in 2025.

7.3 Air Particulate and Radioiodine Sample Results

Air particulate filters and charcoal canisters were collected from locations specified in Table 2, Radiological Environmental Sampling Program – Exposure Pathway - Airborne. During this calendar year 2025, a total of 402 samples were collected and analyzed for gross beta, gamma emitters and iodine. Particulate samplers are used to analyze for gross beta activity following filter change out which occurs weekly. Gamma isotopic analysis is performed on composite samples collected at each location and is analyzed quarterly. Radioiodine (I-131) analysis is performed weekly on radioiodine sample cartridges.

1. Gamma Spectroscopy

Gamma spectroscopy was conducted on each of the quarterly particulate composite samples. Throughout 2025, no radionuclides were detected in the gamma isotopic analysis of the quarterly composites from the air particulate filters, except for Be-7. Be-7 is a naturally occurring isotope and was not released from plant operations. Be-7 was detected in 16 of 18 samples. Concentrations at the indicator stations ranged from <MDC to 101.3 fCi/m³, with an average of 52.3 fCi/m³. Control station concentrations ranged from <MDC to 77.8 fCi/m³, with an average of 31.3 fCi/m³.

2. Gross Beta

Gross beta activity was detected in all 201 samples. Indicator location samples had concentrations ranging from 0.8 to 46.5 fCi/m³ with an average concentration of 19.2 fCi/m³. Control location samples had concentrations ranging from 2.7 to 42.6 fCi/m³ with an average of 20 fCi/m³. Gross beta activity was less than ten times the yearly mean of control samples. Therefore, per the ODCM gamma isotopic analysis was not required to be performed on the individual samples.

3. I-131

I-131 was not detected in the air cartridges at either the indicator or control stations in 2025. Historically, I-131 has been detected because of offsite events (i.e., Chernobyl).

Refer to Figure 6: Air Particulate: Analysis for Gross Beta, Average Mean for All Indicator Vs. Control, for air particulate/ radioiodine sample trends.

Air radioiodine results over the past 10 years show non detect for I-131. Air particulate gross beta results from this monitoring period, 2025, were compared to 10-year averages as shown in Figure 6, and there were no material changes.

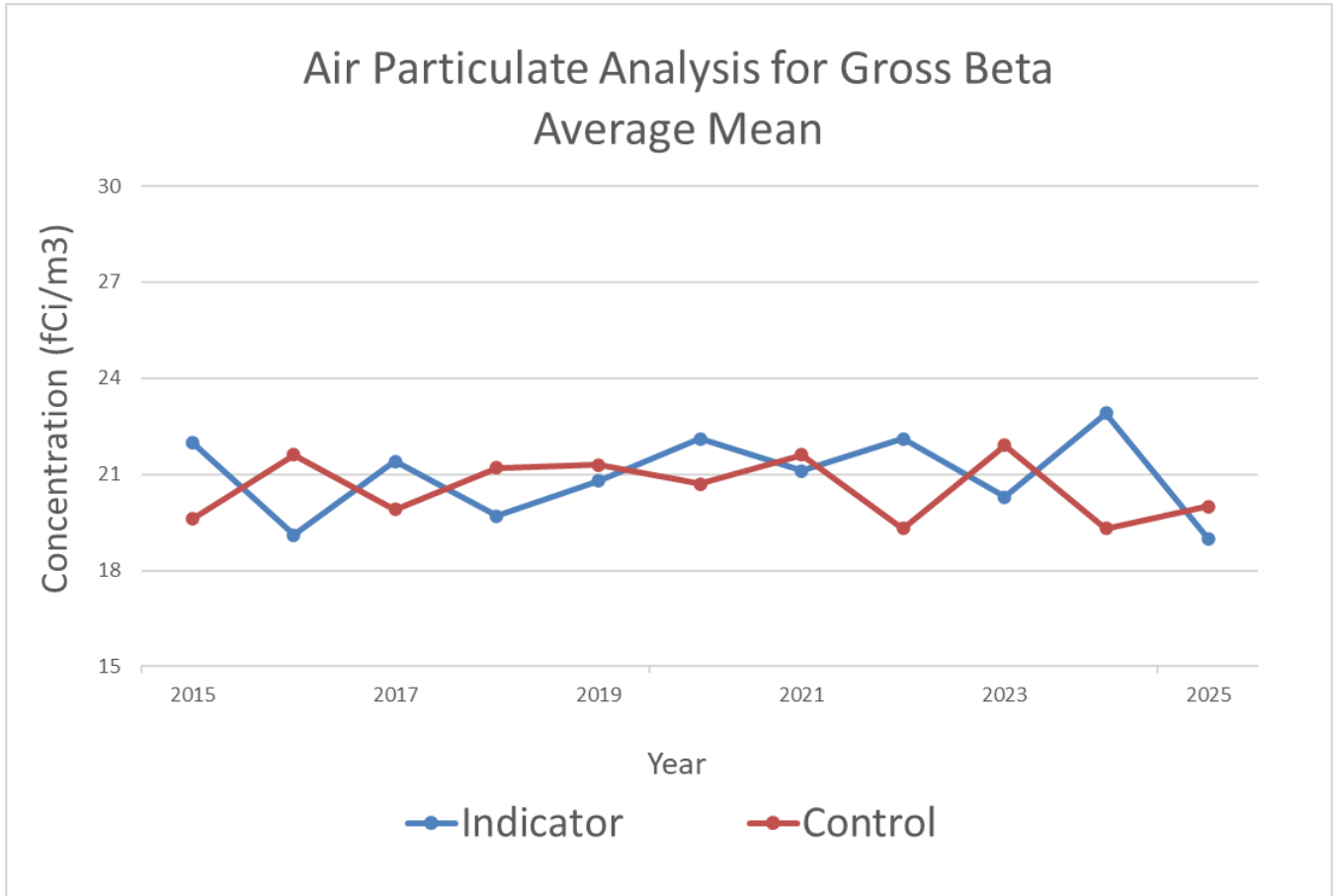


Figure 6: Air Particulate: Analysis for Gross Beta, Average Mean for All Indicator Vs. Control

7.4 Waterborne Sample Results

7.4.1 Surface Water (River Water)

Composite water samples are collected monthly at the upstream control location and at the downstream indicator location. Monthly composite samples are analyzed for gamma emitters. Aliquots from the monthly composites are combined to form a quarterly composites which is then analyzed for tritium. During this calendar year 2025, a total of 24 river water samples were collected and analyzed in accordance with the requirements in the ODCM and shown in Table 3, Radiological Environmental Sampling Program – Exposure Pathway - Waterborne.

1. Gamma Spectroscopy

As provided in Attachment 1, no plant related gamma emitters were detected above the MDC in any of the indicator or control surface water samples.

2. Tritium

Tritium was detected in only one indicator and one control sample in 2025 with concentrations of 139 pCi/L and 127 pCi/L, respectively. These values represent tritium activity well below the 30,000 pCi/L reporting limit.

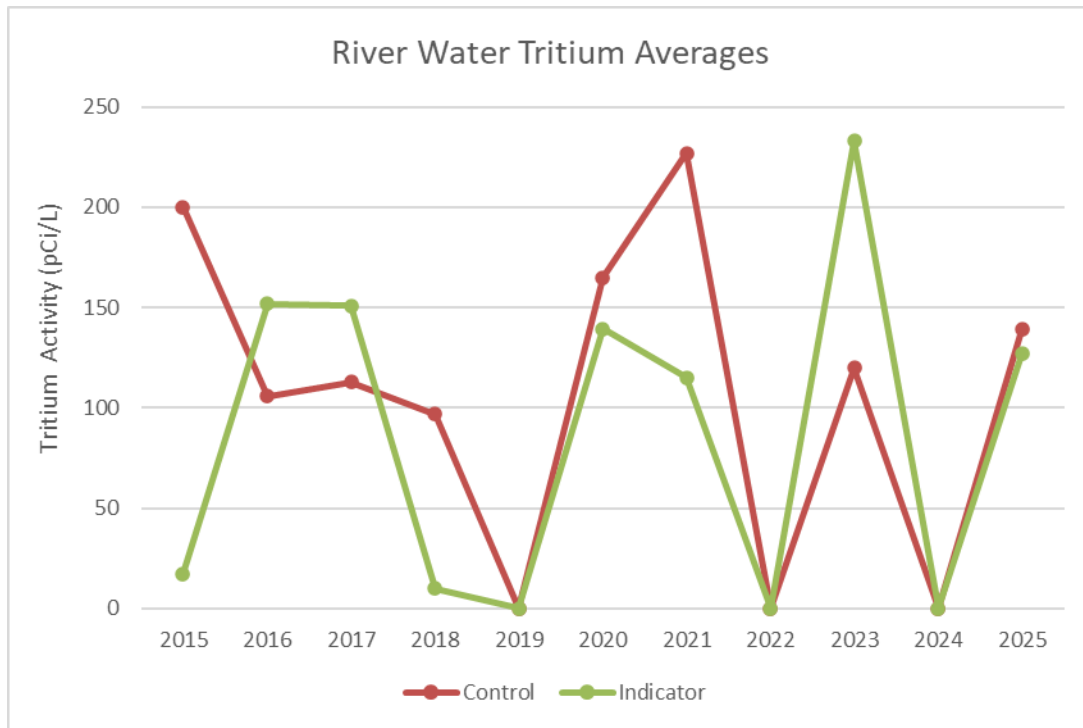


Figure 7: Surface Water Tritium Results

7.4.2 Sediment from Shoreline

Shoreline sediment collections were collected in April and September of 2025 and analyzed for gamma-emitting isotopes. Along with indicator locations samples are also collected at the control locations. A total of 4 shoreline samples were analyzed in accordance with requirements in the ODCM and shown in Table 3, Radiological Environmental Sampling Program – Exposure Pathway - Waterborne.

A gamma isotopic analysis was performed on each sample. The only radionuclide detected in the 2025 samples was Be-7. Though Be-7 was detected in sediment, it was not detected in plant effluents and likely represents naturally occurring in the environment from cosmic-ray spallation of nitrogen and oxygen in the upper atmosphere, followed by downward transport and deposition via rain and aerosols

There were no other radionuclides detected in the 2025 sediment samples.

7.5 Ingestion Pathway Sample Results

7.5.1 Milk

In the past, milk samples were collected bi-weekly from Station 304 (the state prison dairy) which was located more than 10 miles from the plant. Since 1989, a reliable milk sample source within five miles of the plant has not been identified in the land use surveys. This was confirmed in the 2025 land use survey

Station 304 was removed from the program in January 2025.

7.5.2 Fish

A total of 10 fish samples were collected in 2025. These samples were analyzed for gamma emitting radionuclides in edible portions, in accordance with requirements of the ODCM and summarized in Table 4, Radiological Environmental Sampling Program – Exposure Pathway - Ingestion. These samples are collected from the indicator and control areas as required by the ODCM.

For the semi-annual collections, the control location (170) was located upriver of the plant intake structure, and the indicator location (172) was located downriver of the plant discharge structure. As shown in Attachment 1, in 2025, there were no man-made gamma isotopes detected in HNP REMP fish samples, except for Cs-137, which was detected in 1 indicator sample. The indicator station concentration for Cs-137 had a range of <MDC to 17.3 pCi/kg-wet. No other gamma nuclides were detected in 2025.

7.5.3 Grass and Leafy Vegetation

In accordance with the ODCM and as described in Table 4, Radiological Environmental Sampling Program – Exposure Pathway - Ingestion, 36 broad leaf vegetation samples were collected from growing locations nearest site boundary in areas of highest predicted annual average ground level D/Q. Samples are collected and analyzed for gamma isotopic and I-131 from the indicator and control locations monthly during growing season. It is common to detect Cs-137 in broadleaf samples at both indicator and control locations. Cs-137 can be attributed to offsite sources such as weapons testing, Chernobyl, and Fukushima events. While Cs-137 is periodically found in vegetation samples, the historical relationship between the indicator and control locations demonstrate that the plant is not the source of activity detected.

Cs-137 was detected in 11 of 36 samples during 2025, all from indicator locations. Indicator station concentrations ranged from <MDC to 39.6 pCi/kg-wet, with an average of 12.1 pCi/kg-wet. The sample results were consistently well below the MDC and the RL for Cs-137 (80 and 2000 pCi/kg-wet, respectively).

During 2025, there were no other gamma isotopes detected in any vegetation samples.

8.0 LAND USE CENSUS EXPOSURE PATHWAY

Annual Land Use Census required by the Offsite Dose Calculation Manual is performed to ensure that changes in the use of areas at or beyond the site boundary are identified and modifications to REMP are made if required by changes in land use. Land use census satisfies the requirements of Section IV.B.3 of Appendix I to 10 CFR 50 [2]. NUREG-1301/1302 Control 3.12.2 specifies that "a land use census shall be conducted and shall identify within a distance of 8 km (5 mi.) the location in each of the 16 meteorological sectors of the nearest milk animal, the nearest residence and the nearest garden of greater than 50 m² (500 ft²) producing broad leaf vegetation." Note, per NUREG-1301/1302, Broad leaf vegetation sampling of at least three different kinds of vegetation may be performed at the SITE BOUNDARY in each of two different direction sectors with the highest predicted D/Qs in lieu of the garden census.

A Land Use Census was conducted during the calendar year, 2025, within the growing season to identify changes in land use, receptor locations, and new exposure pathways. The results for the 2025 Land Use Census are listed in Table 9: Land Use Census – Nearest Residence within 5 miles. In summary, the highest D/Q locations for nearest residence and nearest milk animal did not change following the 2025 census. However, several new locations for Beef Cattle and Gardens were identified in 2025. The changes from the previous year are captured in bold text below.

Table 9, Land Use Census – Nearest Residence within 5 miles

Direction	Nearest Residence Distance (miles)	Nearest Milk Animal Distance (miles)	Nearest Beef Cattle Distance (miles)	Nearest Garden Distance (miles)
N	2.0	None	None	3.8
NNE	2.9	None	None	None
NE	3.3	None	4.7	3.1
ENE	4.2	None	4.1	None
E	3.0	None	None	None
ESE	3.8	None	None	None
SE	1.8	None	3.1	None
SSE	2.0	None	3.6	2.2
S	1.0	None	1.5	1.0
SSW	1.3	None	2.9	2.9
SW	1.1	None	2.3	1.6
WSW	1.0	None	3.6	2.0
W	1.1	None	2.7	1.1
WNW	1.1	None	None	None
NW	3.6	None	4.5	None
NNW	1.8	None	3.2	2.9

9.0 SAMPLE DEVIATIONS, ANOMALIES AND UNAVAILABILITY

Sampling and analysis are performed for media types addressed in the Offsite Dose Calculation Manual. Sampling and analysis challenges may be experienced due to a multitude of reasons including environmental factors, loss of OSLDs, contamination of samples etc. To aid classification of sampling and analysis challenges experienced in 2025, the following three terms are used to describe the issues: Sample Anomalies (SA), Sample Deviation (SD), and Unavailable Samples (US).

Media that experienced downtime (i.e., air samplers or water samplers) during a surveillance period are classified a "Sample Deviation". "Sample Anomalies" are defined as errors that were introduced to a sample once it arrived in the laboratory, errors that prevents the sample from being analyzed as it normally would or may have altered the outcome of the analysis (i.e., cross contamination, human error). "Sample Unavailability" is defined as sample collection with no available sample (i.e., food crop, OSLD).

All required samples were collected and analyzed as scheduled except for the following:

Table 10, Sample Deviation Summary

Sample Type and Analysis	Location	Collection Date or Period	Reason for not conducting REMP sampling as required by ODCM	Plans for preventing reoccurrence
Airborne Sample Deviation	HNP Location 112	Q1 2025	Loss of power to sample station due to weather conditions (Hurricane Helene) in Q4 of 2024.	Power line surveyed and power restored and station returned to service on 2/5/25
Airborne Sample Deviation	HNP Location 112	Q2, Q3 2025	Loss of power/ Loss of power to sample station due to weather conditions.	Power line surveyed and power restored.

Annual Radiological Environmental Operating Report	YEAR: 2025	Page 30 of 79
Company: Southern Nuclear	Plant: Hatch Nuclear Plant	

10.0 OTHER SUPPLEMENTAL INFORMATION

10.1 NEI 07-07 Onsite Radiological Groundwater Monitoring Program

Hatch Nuclear Plant has developed a Groundwater Protection Initiative (GPI) program in accordance with NEI 07-07, Industry Ground Water Protection Initiative – Final Guidance Document. The purpose of the GPI is to ensure timely detection and an effective response to situations involving inadvertent radiological releases to groundwater to prevent migration of licensed radioactive material off-site and to quantify impacts on decommissioning. It is important to note, samples and results taken in support of NEI 07-07 groundwater monitoring program are not part of the Radiological Environmental Monitoring Program (REMP). Results of NEI 07-07 Radiological Groundwater Monitoring Program for onsite samples are included in the Annual Radioactive Effluent Release Report, ARERR.

10.2 Corrections to Previous Reports

No errata/corrections to previous reports identified.

Annual Radiological Environmental Operating Report	YEAR: 2025	Page 31 of 79
Company: Southern Nuclear	Plant: Hatch Nuclear Plant	

11.0 Bibliography

- [1] NCRP, "Report No. 160, Ionizing Radiation Exposure of the Population of the United States," National Council on Radiation Protection, Bethesda, 2009.
- [2] "10 CFR 50, "Domestic Licensing of Production and Utilization Facilities"," US Nuclear Regulatory Commission, Washington, DC.
- [3] "Regulatory Guide 4.1, "Radiological Environmental Monitoring for Nuclear Power Plants", Revision 2," Nuclear Regulatory Commission, 2009.
- [4] "NUREG-1301, "Offsite Dose Calculation Manual Guidance: Standard Radiological Effluent Controls for Pressurized Water Reactors," .," Nuclear Regulatory Commission, April 1991.
- [5] "NUREG-1302, "Offsite Dose Calculation Manual Guidance: Standard Radiological Effluent Controls for Boiling Water Reactors,"," Nuclear Regulatory Commission, April 1991.
- [6] "Branch Technical Position, Revision 1," NRC000096, Submitted March 30, 2012, November 1979.
- [7] "Japan Atomic Energy Agency," 06 November 2020. [Online]. Available: https://www.jaea.go.jp/english/04/ntokai/houkan/houkan_02.html.
- [8] "Regulatory Guide 4.15, Quality Assurance for Radiological Monitoring Programs (Inception through Normal Operations to License Termination) -- Effluent Streams and the Environment," Nuclear Regulatory Commission, July, 2007.
- [9] "Regulatory Guide 4.13, Performance, Testing, and Procedural Specifications for Thermoluminescence Dosimetry: Environmental Applications, Revision 2," Nuclear Regulatory Commission, June, 2019.
- [10] "NUREG/CR-2919, "XOQDOQ Computer Program for the Meteorological Evaluation of Routine Effluent Releases at Nuclear Power Stations,"," Nuclear Regulatory Commission, September, 1982.
- [11] "Measurements of Radionuclides in the environment Sampling and Analysis of plutonium in soil," Nuclear Regulatory Commission, 1974.
- [12] "Ionizing Radiation Exposure of the Population of the United States," Bethesda, MD, 2009.
- [13] Nuclear Regulatory Commission, 30 June 2015. [Online]. Available: <http://www.nrc.gov/reading-rm/basic-ref/students/animated-pwr.html>. [Accessed October 2020].
- [14] "ICRP Publication 60, "ICRP Publication 60: 1990 Recommendations of the International Commission on Radiological Protection, 60," Annals of the ICRP Volume 21/1-3,," International Commission on Radiation Protection, October, 1991.
- [15] "NRC Resource Page," [Online]. Available: <http://www.nrc.gov/about-nrc/radiation.html>. [Accessed 10 November 2020].
- [16] "NUREG-0133, Preparation of Effluent Technical Specifications for Nuclear Power Plants," Nuclear Regulatory Commission, 1987.
- [17] "Regulatory Guide 1.109, "Calculation of Annual Doses to Man from Routine Releases of Reactor Effluents for the Purpose of Demonstrating Compliance with 10 CFR Part 50, Appendix I,," Nuclear Regulatory Commission, October, 1977.
- [18] [Online]. Available: <http://hps.org/hpspublications/radiationfactsheets.html>. [Accessed 2020].
- [19] "NEI 07-07, "Industry Ground Water Protection Initiative—Final Guidance Document,"," Nuclear Energy Institute, Washington, D.C..

Annual Radiological Environmental Operating Report	YEAR: 2025	Page 32 of 79
Company: Southern Nuclear	Plant: Hatch Nuclear Plant	

- [20] "ANSI 13.37, Environmental Dosimetry- Criteria for System Design and Implementation," Health Physics Society (HPS), May, 2019.
- [21] "40 CFR Part 141, "National Primary Drinking Water Regulations,"," US Environmental Protection Agency, Washington, DC..
- [22] Nuclear Regulatory Commission, 25 June 2015. [Online]. Available: <http://www.nrc.gov/reading-rm/basic-ref/students/animated-bwr.html>. [Accessed October 2020].
- [23] "NEI 07-07, "Industry Ground Water Protection Initiative—Final Guidance Document," Rev. 1," Nuclear Energy Institute, Washington, D.C., 2019.
- [24] Nuclear Regulatory Commission, 25 June 2015. [Online]. Available: <http://www.nrc.gov/reading-rm/basic-ref/students/animated-bwr.html>. [Accessed October 2020].
- [25] [Online]. Available: <http://hps.org/hpspublications/radiationfactsheets.html>. [Accessed 2020].
- [26] "Japan Atomic Energy Agency," 06 November 2020. [Online]. Available: https://www.jaea.go.jp/english/04/ntokai/houkan/houkan_02.html.
- [27] "NRC Resource Page," [Online]. Available: <http://www.nrc.gov/about-nrc/radiation.html>. [Accessed 10 November 2020].
- [28] "NUREG-0133, Preparation of Effluent Technical Specifications for Nuclear Power Plants," Nuclear Regulatory Commission, 1987.
- [29] Nuclear Regulatory Commission, 30 June 2015. [Online]. Available: <http://www.nrc.gov/reading-rm/basic-ref/students/animated-pwr.html>. [Accessed October 2020].
- [30] "Regulatory Guide 4.13, Performance, Testing, and Procedural Specifications for Thermoluminescence Dosimetry: Environmental Applications, Revision 2," Nuclear Regulatory Commission, June, 2019.
- [31] "Regulatory Guide 4.15, Quality Assurance for Radiological Monitoring Programs (Inception through Normal Operations to License Termination) -- Effluent Streams and the Environment," Nuclear Regulatory Commission, July, 2007.
- [32] "10 CFR 50 - Domestic Licensing of Production and Utilization Facilities," US Nuclear Regulatory Commission, Washington, DC.
- [33] "40 CFR 190 - Environmental Radiation Protection Standards for Nuclear Power Operation," US Environmental Protection Agency, Washington, DC.
- [34] "NUREG-0324 - XOQDOQ, Program for the Meteorological Evaluation of Routine Effluent Releases at Nuclear Power Stations," Nuclear Regulatory Commission, September, 1977.
- [35] "NCRP Report No. 160 - Ionizing Radiation Exposure of the Population of the United States," National Council on Radiation Protection and Measurements, Bethesda, MD, 2009.
- [36] "Regulatory Guide 1.109 - Calculation of Annual Doses to Man from Routine Releases of Reactor Effluents for the Purpose of Demonstrating Compliance with 10 CFR Part 50, Appendix I," Nuclear Regulatory Commission, October, 1977.
- [37] "40 CFR 141 - National Primary Drinking Water Regulations," US Environmental Protection Agency, Washington, DC..
- [38] "10 CFR 20 - Standards for Protection Against Radiation," US Nuclear Regulatory Commission, Washington, DC.

Annual Radiological Environmental Operating Report	YEAR: 2025	Page 33 of 79
Company: Southern Nuclear	Plant: Hatch Nuclear Plant	

Attachment 1, Data Table Summary

Attachment 1, Data Table Summary

Medium or Pathway Sampled (Units)	Type, Total Number of Analyses performed (e.g., I-131, 400)	Lower Limit of Detection (LLD) ^a	Indicator Mean (f) Range ^{b,c}	Location with Highest Annual Mean		Control Mean (f) Range ^{b,c}	Other Locations Mean (f). Range ^{b,c}
				Name Distance and Direction	Mean (f) Range ^b		
Air Particulates (fCi/m ³)	Gross Beta, 201	10	19.2 (148/148) 0.8-46.5	Inner Ring SE 1.2 mi.	21.3 (1/1) 21.3-21.3	20 (53/53) 2.7-42.6	
	Gamma Isotopic, 18						
	Be-7	NA	52.3 (12/13) 0-101.3	Inner Ring NNW 1.6 mi.	72.5 (4/4) 41.4-85.7	31.3 (4/5) 0-77.8	
	I-131	70	NDM			NDM	
	Cs-134	50	NDM			NDM	
	Cs-137	60	NDM			NDM	
Airborne Radioiodine (fCi/m ³)	I-131, 201	70	NDM			NDM	
Direct Radiation (mR/Qtr.)	Gamma Dose, 136	NA	13.6 (61/61) 10.6-21	Inner Ring NW 1.1 mi.	19.6 (4/4) 18.3-21	10.4 (3/3) 5.4-13.1	13.2 (72/72) 8.8-18
Milk (pCi/L)	Low Level I-131, 0	1					
	Gamma Isotopic, 0						
	Cs-134	15					
	Cs-137	18					
	Ba-140	60					
	La-140	15					
Vegetation (pCi/kg-wet)	Gamma Isotopic, 36						
	Be-7	NA	2,820.5 (24/24) 321.2-11,541	Inner Ring ESE 1.1 mi.	3,701.4 (12/12) 971.2-11,541	3,123.2 (12/12) 1,327.7-6154.4	
	I-131	60	NDM			NDM	
	Cs-134	60	NDM			NDM	
	Cs-137	80	12.1 (11/24) 0-39.6	Inner Ring ESE 1.1 mi.	22.2 (10/12) 0-39.6	NDM	

Attachment 1, Data Table Summary

Medium or Pathway Sampled (Units)	Type, Total Number of Analyses performed (e.g., I-131, 400)	Lower Limit of Detection (LLD) ^a	Indicator Mean (f) Range ^{b,c}	Location with Highest Annual Mean		Control Mean (f) Range ^{b,c}	Other Locations Mean (f). Range ^{b,c}
				Name Distance and Direction	Mean (f) Range ^b		
Surface Water - River Water (pCi/L)	Gamma Isotopic, 24						
	Be-7	NA	NDM			NDM	
	Mn-54	15	NDM			NDM	
	Fe-59	30	NDM			NDM	
	Co-58	15	NDM			NDM	
	Co-60	15	NDM			NDM	
	Zn-65	30	NDM			NDM	
	Zr-95	30	NDM			NDM	
	Nb-95	15	NDM			NDM	
	I-131 ^d	15	NDM			NDM	
	Cs-134	15	NDM			NDM	
	Cs-137	18	NDM			NDM	
	Ba-140	60	NDM			NDM	
	La-140	15	NDM			NDM	
	Tritium ^e , 8	3000	139 (1/4) 0-139	Downstream E ~ 3.0 RM from intake	34.8 (1/4) 0-139	127 (1/4) 0-127	
Fish (pCi/kg-wet)	Gamma Isotopic, 10						
	Be-7	NA	NDM			NDM	
	Mn-54	130	NDM			NDM	
	Fe-59	260	NDM			NDM	
	Co-58	130	NDM			NDM	
	Co-60	130	NDM			NDM	
	Zn-65	260	NDM			NDM	
	Cs-134	130	NDM			NDM	
	Cs-137	150	17.3 (1/6) 0-17.3	Downstream E ~ 3.0 RM from intake	17.3 (1/6) 0-17.3	NDM	

Attachment 1, Data Table Summary

Medium or Pathway Sampled (Units)	Type, Total Number of Analyses performed (e.g., I-131, 400)	Lower Limit of Detection (LLD) ^a	Indicator Mean (f) Range ^{b,c}	Location with Highest Annual Mean		Control Mean (f) Range ^{b,c}	Other Locations Mean (f). Range ^{b,c}
				Name Distance and Direction	Mean (f) Range ^b		
Sediment (pCi/kg-dry)	Gamma Isotopic, 4						
	Be-7	NA	200.7 (1/2) 0-200.7	Downstream E ~ 3.0 RM from intake	200.7 (1/2) 0-200.7	244.2 (1/2) 0-244.2	
	Cs-134	150	NDM			NDM	
	Cs-137	180	NDM			NDM	

Notes:

- a. Except as noted otherwise, the values listed in this column are the detection capabilities required by Table 7, which are defined in the ODCM. The values listed in this column are a priori (before the fact) MDCs. In practice, the a posteriori (after the fact) MDCs are generally lower than the values listed.
- b. Mean and range were based upon detectable measurements only. The fraction of all measurements at a specified location that are detectable is placed in parenthesis.
- c. No Detectable Measurement(s) (NDM)
- d. If a drinking water pathway were to exist, an MDC of 1pCi/L would have been used.
- e. If a drinking water pathway were to exist, an MDC of 2000 pCi/L would have been used.
- f. Not Applicable (NA)

Annual Radiological Environmental Operating Report	YEAR: 2025	Page 37 of 79
Company: Southern Nuclear	Plant:	Hatch Nuclear Plant

Attachment 2, Complete Data Table for All Analysis Results Obtained In 2025

Attachment 2, Complete Data Table for All Analysis Results Obtained In 2025

Attachment 2, Complete Data Table for All Analysis Results Obtained In 2025

Sample Type	Location	Date	Nuclide	Activity	95% CL	MDA	Units
Air Filters	304	1/6/2025	Gross Beta	0.0212	0.0034	0.0241	pCi/m3
Air Filters	103	1/6/2025	Gross Beta	0.0221	0.0033	0.0249	pCi/m3
Air Filters	116	1/6/2025	Gross Beta	0.0235	0.0036	0.0266	pCi/m3
Air Filters	107	1/6/2025	Gross Beta	0.0213	0.0035	0.0242	pCi/m3
Air Filters	309	1/6/2025	Gross Beta	0.0238	0.0036	0.0269	pCi/m3
Air Filters	304	1/13/2025	Gross Beta	0.0000	0.0000	0.0020	pCi/m3
Air Filters	103	1/13/2025	Gross Beta	0.0168	0.0035	0.0000	pCi/m3
Air Filters	116	1/13/2025	Gross Beta	0.0171	0.0036	0.0000	pCi/m3
Air Filters	304	1/20/2025	Gross Beta	0.0273	0.0045	0.0310	pCi/m3
Air Filters	103	1/20/2025	Gross Beta	0.0243	0.0037	0.0274	pCi/m3
Air Filters	116	1/20/2025	Gross Beta	0.0235	0.0040	0.0268	pCi/m3
Air Filters	304	1/27/2025	Gross Beta	0.0226	0.0037	0.0257	pCi/m3
Air Filters	103	1/27/2025	Gross Beta	0.0244	0.0036	0.0274	pCi/m3
Air Filters	116	1/27/2025	Gross Beta	0.0240	0.0039	0.0273	pCi/m3
Air Filters	304	2/3/2025	Gross Beta	0.0305	0.0040	0.0339	pCi/m3
Air Filters	103	2/3/2025	Gross Beta	0.0288	0.0038	0.0320	pCi/m3
Air Filters	116	2/3/2025	Gross Beta	0.0297	0.0041	0.0331	pCi/m3
Air Filters	304	2/10/2025	Gross Beta	0.0228	0.0036	0.0259	pCi/m3
Air Filters	103	2/10/2025	Gross Beta	0.0207	0.0033	0.0235	pCi/m3
Air Filters	116	2/10/2025	Gross Beta	0.0236	0.0037	0.0267	pCi/m3
Air Filters	304	2/17/2025	Gross Beta	0.0200	0.0035	0.0229	pCi/m3
Air Filters	103	2/17/2025	Gross Beta	0.0167	0.0031	0.0193	pCi/m3
Air Filters	116	2/17/2025	Gross Beta	0.0184	0.0035	0.0213	pCi/m3
Air Filters	112	2/17/2025	Gross Beta	0.0166	0.0031	0.0192	pCi/m3
Air Filters	112	2/24/2025	Gross Beta	0.0206	0.0035	0.0235	pCi/m3
Air Filters	304	2/24/2025	Gross Beta	0.0245	0.0038	0.0277	pCi/m3
Air Filters	103	2/24/2025	Gross Beta	0.0245	0.0036	0.0276	pCi/m3
Air Filters	116	2/24/2025	Gross Beta	0.0257	0.0040	0.0291	pCi/m3

Annual Radiological Environmental Operating Report		YEAR: 2025	Page 39 of 79
Company: Southern Nuclear		Plant: Hatch Nuclear Plant	

Attachment 2, Complete Data Table for All Analysis Results Obtained In 2025

Sample Type	Location	Date	Nuclide	Activity	95% CL	MDA	Units
Air Filters	304	3/3/2025	Gross Beta	0.0234	0.0037	0.0265	pCi/m3
Air Filters	103	3/3/2025	Gross Beta	0.0197	0.0033	0.0225	pCi/m3
Air Filters	116	3/3/2025	Gross Beta	0.0209	0.0036	0.0240	pCi/m3
Air Filters	112	3/3/2025	Gross Beta	0.0247	0.0036	0.0277	pCi/m3
Air Filters	304	3/10/2025	Gross Beta	0.0147	0.0033	0.0175	pCi/m3
Air Filters	103	3/10/2025	Gross Beta	0.0122	0.0030	0.0147	pCi/m3
Air Filters	116	3/10/2025	Gross Beta	0.0156	0.0034	0.0185	pCi/m3
Air Filters	112	3/10/2025	Gross Beta	0.0143	0.0030	0.0168	pCi/m3
Air Filters	304	3/17/2025	Gross Beta	0.0202	0.0035	0.0232	pCi/m3
Air Filters	103	3/17/2025	Gross Beta	0.0159	0.0031	0.0185	pCi/m3
Air Filters	116	3/17/2025	Gross Beta	0.0190	0.0035	0.0219	pCi/m3
Air Filters	112	3/17/2025	Gross Beta	0.0200	0.0033	0.0228	pCi/m3
Air Filters	112	3/24/2025	Gross Beta	0.0161	0.0032	0.0187	pCi/m3
Air Filters	304	3/24/2025	Gross Beta	0.0183	0.0034	0.0212	pCi/m3
Air Filters	103	3/24/2025	Gross Beta	0.0163	0.0031	0.0190	pCi/m3
Air Filters	116	3/24/2025	Gross Beta	0.0190	0.0035	0.0220	pCi/m3
Air Filters	103	3/31/2025	Gross Beta	0.0129	0.0029	0.0153	pCi/m3
Air Filters	304	3/31/2025	Gross Beta	0.0143	0.0031	0.0170	pCi/m3
Air Filters	116	3/31/2025	Gross Beta	0.0173	0.0033	0.0201	pCi/m3
Air Filters	112	3/31/2025	Gross Beta	0.0160	0.0030	0.0186	pCi/m3
Air Filters	112	4/8/2025	Gross Beta	0.0102	0.0027	0.0125	pCi/m3
Air Filters	304	4/8/2025	Gross Beta	0.0113	0.0029	0.0138	pCi/m3
Air Filters	103	4/8/2025	Gross Beta	0.0121	0.0028	0.0145	pCi/m3
Air Filters	116	4/8/2025	Gross Beta	0.0102	0.0029	0.0127	pCi/m3
Air Filters	304	4/14/2025	Gross Beta	0.0213	0.0038	0.0245	pCi/m3
Air Filters	103	4/14/2025	Gross Beta	0.0250	0.0041	0.0284	pCi/m3
Air Filters	116	4/14/2025	Gross Beta	0.0211	0.0039	0.0243	pCi/m3
Air Filters	112	4/14/2025	Gross Beta	0.0227	0.0037	0.0258	pCi/m3
Air Filters	304	4/21/2025	Gross Beta	0.0223	0.0036	0.0253	pCi/m3

Annual Radiological Environmental Operating Report		YEAR: 2025	Page 40 of 79
Company: Southern Nuclear		Plant: Hatch Nuclear Plant	

Attachment 2, Complete Data Table for All Analysis Results Obtained In 2025

Sample Type	Location	Date	Nuclide	Activity	95% CL	MDA	Units
Air Filters	103	4/21/2025	Gross Beta	0.0217	0.0035	0.0247	pCi/m3
Air Filters	116	4/21/2025	Gross Beta	0.0219	0.0036	0.0250	pCi/m3
Air Filters	112	4/21/2025	Gross Beta	0.0205	0.0033	0.0233	pCi/m3
Air Filters	304	4/28/2025	Gross Beta	0.0265	0.0038	0.0297	pCi/m3
Air Filters	103	4/28/2025	Gross Beta	0.0250	0.0037	0.0281	pCi/m3
Air Filters	116	4/28/2025	Gross Beta	0.0198	0.0035	0.0227	pCi/m3
Air Filters	112	4/28/2025	Gross Beta	0.0201	0.0033	0.0229	pCi/m3
Air Filters	304	5/5/2025	Gross Beta	0.0206	0.0035	0.0236	pCi/m3
Air Filters	103	5/5/2025	Gross Beta	0.0022	0.0022	0.0041	pCi/m3
Air Filters	116	5/5/2025	Gross Beta	0.0226	0.0037	0.0257	pCi/m3
Air Filters	112	5/5/2025	Gross Beta	0.0188	0.0033	0.0216	pCi/m3
Air Filters	304	5/12/2025	Gross Beta	0.0117	0.0029	0.0142	pCi/m3
Air Filters	116	5/12/2025	Gross Beta	0.0147	0.0031	0.0173	pCi/m3
Air Filters	112	5/12/2025	Gross Beta	0.0092	0.0026	0.0113	pCi/m3
Air Filters	103	5/13/2025	Gross Beta	0.0154	0.0029	0.0178	pCi/m3
Air Filters	304	5/19/2025	Gross Beta	0.0236	0.0037	0.0267	pCi/m3
Air Filters	103	5/19/2025	Gross Beta	0.0233	0.0039	0.0266	pCi/m3
Air Filters	116	5/19/2025	Gross Beta	0.0205	0.0036	0.0235	pCi/m3
Air Filters	112	5/19/2025	Gross Beta	0.0161	0.0031	0.0187	pCi/m3
Air Filters	304	5/27/2025	Gross Beta	0.0207	0.0033	0.0235	pCi/m3
Air Filters	103	5/27/2025	Gross Beta	0.0199	0.0032	0.0226	pCi/m3
Air Filters	116	5/27/2025	Gross Beta	0.0193	0.0033	0.0221	pCi/m3
Air Filters	112	5/27/2025	Gross Beta	0.0175	0.0030	0.0200	pCi/m3
Air Filters	304	6/2/2025	Gross Beta	0.0152	0.0036	0.0182	pCi/m3
Air Filters	103	6/2/2025	Gross Beta	0.0165	0.0036	0.0195	pCi/m3
Air Filters	116	6/2/2025	Gross Beta	0.0170	0.0038	0.0202	pCi/m3
Air Filters	112	6/2/2025	Gross Beta	0.0086	0.0030	0.0111	pCi/m3
Air Filters	112	6/9/2025	Gross Beta	0.0122	0.0029	0.0146	pCi/m3
Air Filters	304	6/9/2025	Gross Beta	0.0146	0.0032	0.0173	pCi/m3

Annual Radiological Environmental Operating Report		YEAR: 2025	Page 41 of 79
Company: Southern Nuclear		Plant: Hatch Nuclear Plant	

Attachment 2, Complete Data Table for All Analysis Results Obtained In 2025

Sample Type	Location	Date	Nuclide	Activity	95% CL	MDA	Units
Air Filters	103	6/9/2025	Gross Beta	0.0208	0.0035	0.0237	pCi/m3
Air Filters	116	6/9/2025	Gross Beta	0.0182	0.0035	0.0211	pCi/m3
Air Filters	112	6/16/2025	Gross Beta	0.0091	0.0026	0.0113	pCi/m3
Air Filters	304	6/16/2025	Gross Beta	0.0112	0.0028	0.0136	pCi/m3
Air Filters	103	6/16/2025	Gross Beta	0.0135	0.0030	0.0160	pCi/m3
Air Filters	116	6/16/2025	Gross Beta	0.0119	0.0030	0.0144	pCi/m3
Air Filters	112	6/22/2025	Gross Beta	0.0096	0.0030	0.0121	pCi/m3
Air Filters	304	6/22/2025	Gross Beta	0.0141	0.0034	0.0170	pCi/m3
Air Filters	103	6/22/2025	Gross Beta	0.0180	0.0037	0.0211	pCi/m3
Air Filters	116	6/22/2025	Gross Beta	0.0170	0.0037	0.0201	pCi/m3
Air Filters	103	6/29/2025	Gross Beta	0.0165	0.0033	0.0193	pCi/m3
Air Filters	304	6/29/2025	Gross Beta	0.0192	0.0035	0.0221	pCi/m3
Air Filters	116	6/29/2025	Gross Beta	0.0192	0.0036	0.0222	pCi/m3
Air Filters	112	6/29/2025	Gross Beta	0.0136	0.0051	0.0179	pCi/m3
Air Filters	304	7/8/2025	Gross Beta	0.0141	0.0027	0.0164	pCi/m3
Air Filters	103	7/8/2025	Gross Beta	0.0184	0.0029	0.0208	pCi/m3
Air Filters	116	7/8/2025	Gross Beta	0.0179	0.0030	0.0204	pCi/m3
Air Filters	112	7/8/2025	Gross Beta	0.0113	0.0033	0.0141	pCi/m3
Air Filters	304	7/15/2025	Gross Beta	0.0158	0.0032	0.0185	pCi/m3
Air Filters	103	7/15/2025	Gross Beta	0.0176	0.0032	0.0203	pCi/m3
Air Filters	116	7/15/2025	Gross Beta	0.0152	0.0032	0.0179	pCi/m3
Air Filters	112	7/15/2025	Gross Beta	0.0115	0.0028	0.0138	pCi/m3
Air Filters	304	7/21/2025	Gross Beta	0.0131	0.0035	0.0160	pCi/m3
Air Filters	103	7/21/2025	Gross Beta	0.0148	0.0035	0.0178	pCi/m3
Air Filters	116	7/21/2025	Gross Beta	0.0123	0.0035	0.0152	pCi/m3
Air Filters	112	7/21/2025	Gross Beta	0.0087	0.0030	0.0112	pCi/m3
Air Filters	304	7/28/2025	Gross Beta	0.0128	0.0032	0.0155	pCi/m3
Air Filters	103	7/28/2025	Gross Beta	0.0120	0.0031	0.0145	pCi/m3
Air Filters	116	7/28/2025	Gross Beta	0.0112	0.0031	0.0139	pCi/m3

Annual Radiological Environmental Operating Report		YEAR: 2025	Page 42 of 79
Company: Southern Nuclear		Plant: Hatch Nuclear Plant	

Attachment 2, Complete Data Table for All Analysis Results Obtained In 2025

Sample Type	Location	Date	Nuclide	Activity	95% CL	MDA	Units
Air Filters	304	8/4/2025	Gross Beta	0.0146	0.0033	0.0174	pCi/m3
Air Filters	103	8/4/2025	Gross Beta	0.0137	0.0032	0.0164	pCi/m3
Air Filters	116	8/4/2025	Gross Beta	0.0154	0.0034	0.0183	pCi/m3
Air Filters	304	8/11/2025	Gross Beta	0.0080	0.0029	0.0104	pCi/m3
Air Filters	103	8/11/2025	Gross Beta	0.0076	0.0028	0.0099	pCi/m3
Air Filters	116	8/11/2025	Gross Beta	0.0058	0.0027	0.0081	pCi/m3
Air Filters	304	8/18/2025	Gross Beta	0.0120	0.0030	0.0146	pCi/m3
Air Filters	103	8/18/2025	Gross Beta	0.0115	0.0029	0.0139	pCi/m3
Air Filters	116	8/18/2025	Gross Beta	0.0103	0.0029	0.0128	pCi/m3
Air Filters	112	8/18/2025	Gross Beta	0.0082	0.0029	0.0106	pCi/m3
Air Filters	112	8/25/2025	Gross Beta	0.0134	0.0030	0.0160	pCi/m3
Air Filters	304	8/25/2025	Gross Beta	0.0265	0.0039	0.0297	pCi/m3
Air Filters	103	8/25/2025	Gross Beta	0.0262	0.0038	0.0294	pCi/m3
Air Filters	116	8/25/2025	Gross Beta	0.0229	0.0037	0.0260	pCi/m3
Air Filters	304	9/2/2025	Gross Beta	0.0262	0.0037	0.0293	pCi/m3
Air Filters	103	9/2/2025	Gross Beta	0.0254	0.0036	0.0284	pCi/m3
Air Filters	116	9/2/2025	Gross Beta	0.0241	0.0037	0.0272	pCi/m3
Air Filters	112	9/2/2025	Gross Beta	0.0184	0.0031	0.0210	pCi/m3
Air Filters	304	9/8/2025	Gross Beta	0.0172	0.0030	0.0197	pCi/m3
Air Filters	103	9/8/2025	Gross Beta	0.0159	0.0029	0.0183	pCi/m3
Air Filters	116	9/8/2025	Gross Beta	0.0193	0.0032	0.0219	pCi/m3
Air Filters	112	9/8/2025	Gross Beta	0.0113	0.0025	0.0134	pCi/m3
Air Filters	304	9/15/2025	Gross Beta	0.0246	0.0038	0.0278	pCi/m3
Air Filters	103	9/15/2025	Gross Beta	0.0262	0.0038	0.0293	pCi/m3
Air Filters	116	9/15/2025	Gross Beta	0.0251	0.0038	0.0283	pCi/m3
Air Filters	112	9/15/2025	Gross Beta	0.0164	0.0031	0.0191	pCi/m3
Air Filters	304	9/22/2025	Gross Beta	0.0426	0.0046	0.0464	pCi/m3
Air Filters	103	9/22/2025	Gross Beta	0.0465	0.0047	0.0504	pCi/m3
Air Filters	116	9/22/2025	Gross Beta	0.0429	0.0046	0.0468	pCi/m3

Attachment 2, Complete Data Table for All Analysis Results Obtained In 2025

Sample Type	Location	Date	Nuclide	Activity	95% CL	MDA	Units
Air Filters	112	9/22/2025	Gross Beta	0.0283	0.0037	0.0315	pCi/m3
Air Filters	304	9/29/2025	Gross Beta	0.0124	0.0029	0.0148	pCi/m3
Air Filters	103	9/29/2025	Gross Beta	0.0149	0.0030	0.0174	pCi/m3
Air Filters	116	9/29/2025	Gross Beta	0.0116	0.0029	0.0140	pCi/m3
Air Filters	112	9/29/2025	Gross Beta	0.0090	0.0025	0.0112	pCi/m3
Air Filters	304	10/6/2025	Gross Beta	0.0214	0.0035	0.0244	pCi/m3
Air Filters	103	10/6/2025	Gross Beta	0.0198	0.0034	0.0226	pCi/m3
Air Filters	112	10/6/2025	Gross Beta	0.0145	0.0030	0.0170	pCi/m3
Air Filters	116	10/6/2025	Gross Beta	0.0177	0.0034	0.0205	pCi/m3
Air Filters	304	10/13/2025	Gross Beta	0.0155	0.0031	0.0181	pCi/m3
Air Filters	103	10/13/2025	Gross Beta	0.0175	0.0032	0.0202	pCi/m3
Air Filters	116	10/13/2025	Gross Beta	0.0208	0.0035	0.0237	pCi/m3
Air Filters	112	10/13/2025	Gross Beta	0.0118	0.0027	0.0141	pCi/m3
Air Filters	304	10/20/2025	Gross Beta	0.0235	0.0038	0.0266	pCi/m3
Air Filters	103	10/20/2025	Gross Beta	0.0175	0.0033	0.0203	pCi/m3
Air Filters	116	10/20/2025	Gross Beta	0.0227	0.0037	0.0258	pCi/m3
Air Filters	112	10/20/2025	Gross Beta	0.0158	0.0031	0.0184	pCi/m3
Air Filters	304	10/27/2025	Gross Beta	0.0194	0.0037	0.0225	pCi/m3
Air Filters	103	10/27/2025	Gross Beta	0.0211	0.0036	0.0242	pCi/m3
Air Filters	116	10/27/2025	Gross Beta	0.0213	0.0037	0.0244	pCi/m3
Air Filters	112	10/27/2025	Gross Beta	0.0277	0.0038	0.0308	pCi/m3
Air Filters	304	11/3/2025	Gross Beta	0.0167	0.0034	0.0196	pCi/m3
Air Filters	103	11/3/2025	Gross Beta	0.0008	0.0022	0.0026	pCi/m3
Air Filters	116	11/3/2025	Gross Beta	0.0126	0.0031	0.0152	pCi/m3
Air Filters	112	11/3/2025	Gross Beta	0.0144	0.0030	0.0169	pCi/m3
Air Filters	304	11/10/2025	Gross Beta	0.0348	0.0044	0.0385	pCi/m3
Air Filters	103	11/10/2025	Gross Beta	0.0274	0.0040	0.0307	pCi/m3
Air Filters	116	11/10/2025	Gross Beta	0.0301	0.0042	0.0336	pCi/m3
Air Filters	112	11/10/2025	Gross Beta	0.0301	0.0039	0.0334	pCi/m3

Attachment 2, Complete Data Table for All Analysis Results Obtained In 2025

Sample Type	Location	Date	Nuclide	Activity	95% CL	MDA	Units
Air Filters	304	11/17/2025	Gross Beta	0.0266	0.0040	0.0299	pCi/m3
Air Filters	103	11/17/2025	Gross Beta	0.0241	0.0036	0.0271	pCi/m3
Air Filters	116	11/17/2025	Gross Beta	0.0222	0.0036	0.0252	pCi/m3
Air Filters	112	11/17/2025	Gross Beta	0.0240	0.0035	0.0269	pCi/m3
Air Filters	103	11/24/2025	Gross Beta	0.0314	0.0041	0.0349	pCi/m3
Air Filters	304	11/24/2025	Gross Beta	0.0293	0.0041	0.0328	pCi/m3
Air Filters	116	11/24/2025	Gross Beta	0.0028	0.0024	0.0048	pCi/m3
Air Filters	112	11/24/2025	Gross Beta	0.0245	0.0036	0.0275	pCi/m3
Air Filters	304	12/1/2025	Gross Beta	0.0199	0.0037	0.0230	pCi/m3
Air Filters	103	12/1/2025	Gross Beta	0.0210	0.0036	0.0240	pCi/m3
Air Filters	116	12/1/2025	Gross Beta	0.0232	0.0038	0.0264	pCi/m3
Air Filters	112	12/1/2025	Gross Beta	0.0242	0.0036	0.0272	pCi/m3
Air Filters	304	12/8/2025	Gross Beta	0.0224	0.0038	0.0256	pCi/m3
Air Filters	103	12/8/2025	Gross Beta	0.0228	0.0037	0.0259	pCi/m3
Air Filters	116	12/8/2025	Gross Beta	0.0239	0.0038	0.0271	pCi/m3
Air Filters	112	12/8/2025	Gross Beta	0.0268	0.0037	0.0300	pCi/m3
Air Filters	304	12/15/2025	Gross Beta	0.0271	0.0039	0.0304	pCi/m3
Air Filters	103	12/15/2025	Gross Beta	0.0232	0.0036	0.0262	pCi/m3
Air Filters	116	12/15/2025	Gross Beta	0.0267	0.0038	0.0299	pCi/m3
Air Filters	112	12/15/2025	Gross Beta	0.0255	0.0035	0.0284	pCi/m3
Air Filters	304	12/22/2025	Gross Beta	0.0027	0.0025	0.0047	pCi/m3
Air Filters	103	12/22/2025	Gross Beta	0.0008	0.0022	0.0027	pCi/m3
Air Filters	116	12/22/2025	Gross Beta	0.0225	0.0037	0.0256	pCi/m3
Air Filters	112	12/22/2025	Gross Beta	0.0188	0.0033	0.0216	pCi/m3
Air Filters	304	12/29/2025	Gross Beta	0.0263	0.0039	0.0295	pCi/m3
Air Filters	103	12/29/2025	Gross Beta	0.0236	0.0036	0.0266	pCi/m3
Air Filters	116	12/29/2025	Gross Beta	0.0240	0.0037	0.0270	pCi/m3
Air Filters	112	12/29/2025	Gross Beta	0.0215	0.0033	0.0243	pCi/m3
Air Qtr Comp	107	1/6/2025	Be-7	0.0000	0.0000	0.1698	pCi/m3

Annual Radiological Environmental Operating Report		YEAR: 2025	Page 45 of 79
Company: Southern Nuclear		Plant: Hatch Nuclear Plant	

Attachment 2, Complete Data Table for All Analysis Results Obtained In 2025

Sample Type	Location	Date	Nuclide	Activity	95% CL	MDA	Units
Air Qtr Comp	107	1/6/2025	Cs-134	0.0000	0.0000	0.0058	pCi/m3
Air Qtr Comp	107	1/6/2025	Cs-137	0.0000	0.0000	0.0056	pCi/m3
Air Qtr Comp	107	1/6/2025	I-131	0.0000	0.0000	100.0000	pCi/m3
Air Qtr Comp	309	1/6/2025	Be-7	0.0000	0.0000	0.1531	pCi/m3
Air Qtr Comp	309	1/6/2025	Cs-134	0.0000	0.0000	0.0047	pCi/m3
Air Qtr Comp	309	1/6/2025	Cs-137	0.0000	0.0000	0.0052	pCi/m3
Air Qtr Comp	309	1/6/2025	I-131	0.0000	0.0000	100.0000	pCi/m3
Air Qtr Comp	103	3/31/2025	Be-7	0.0627	0.0189	0.0000	pCi/m3
Air Qtr Comp	103	3/31/2025	Cs-134	0.0000	0.0000	0.0009	pCi/m3
Air Qtr Comp	103	3/31/2025	Cs-137	0.0000	0.0000	0.0012	pCi/m3
Air Qtr Comp	103	3/31/2025	I-131	0.0000	0.0000	0.0120	pCi/m3
Air Qtr Comp	304	3/31/2025	Be-7	0.0414	0.0189	0.0000	pCi/m3
Air Qtr Comp	304	3/31/2025	Cs-134	0.0000	0.0000	0.0013	pCi/m3
Air Qtr Comp	304	3/31/2025	Cs-137	0.0000	0.0000	0.0013	pCi/m3
Air Qtr Comp	304	3/31/2025	I-131	0.0000	0.0000	0.0103	pCi/m3
Air Qtr Comp	116	3/31/2025	Be-7	0.0643	0.0201	0.0000	pCi/m3
Air Qtr Comp	116	3/31/2025	Cs-134	0.0000	0.0000	0.0009	pCi/m3
Air Qtr Comp	116	3/31/2025	Cs-137	0.0000	0.0000	0.0011	pCi/m3
Air Qtr Comp	116	3/31/2025	I-131	0.0000	0.0000	0.0090	pCi/m3
Air Qtr Comp	112	3/31/2025	Be-7	0.1013	0.0164	0.0000	pCi/m3
Air Qtr Comp	112	3/31/2025	Cs-134	0.0000	0.0000	0.0006	pCi/m3
Air Qtr Comp	112	3/31/2025	Cs-137	0.0000	0.0000	0.0006	pCi/m3
Air Qtr Comp	112	3/31/2025	I-131	0.0000	0.0000	0.0124	pCi/m3
Air Qtr Comp	103	6/29/2025	Be-7	0.0827	0.0224	0.0000	pCi/m3
Air Qtr Comp	103	6/29/2025	Cs-134	0.0000	0.0000	0.0012	pCi/m3
Air Qtr Comp	103	6/29/2025	Cs-137	0.0000	0.0000	0.0010	pCi/m3
Air Qtr Comp	103	6/29/2025	I-131	0.0000	0.0000	0.0110	pCi/m3
Air Qtr Comp	304	6/29/2025	Be-7	0.0778	0.0191	0.0000	pCi/m3
Air Qtr Comp	304	6/29/2025	Cs-134	0.0000	0.0000	0.0010	pCi/m3

Annual Radiological Environmental Operating Report		YEAR: 2025	Page 46 of 79
Company: Southern Nuclear		Plant: Hatch Nuclear Plant	

Attachment 2, Complete Data Table for All Analysis Results Obtained In 2025

Sample Type	Location	Date	Nuclide	Activity	95% CL	MDA	Units
Air Qtr Comp	304	6/29/2025	Cs-137	0.0000	0.0000	0.0009	pCi/m3
Air Qtr Comp	304	6/29/2025	I-131	0.0000	0.0000	0.0064	pCi/m3
Air Qtr Comp	116	6/29/2025	Be-7	0.0857	0.0260	0.0000	pCi/m3
Air Qtr Comp	116	6/29/2025	Cs-134	0.0000	0.0000	0.0013	pCi/m3
Air Qtr Comp	116	6/29/2025	Cs-137	0.0000	0.0000	0.0014	pCi/m3
Air Qtr Comp	116	6/29/2025	I-131	0.0000	0.0000	0.0094	pCi/m3
Air Qtr Comp	112	6/29/2025	Be-7	0.0729	0.0213	0.0000	pCi/m3
Air Qtr Comp	112	6/29/2025	Cs-134	0.0000	0.0000	0.0008	pCi/m3
Air Qtr Comp	112	6/29/2025	Cs-137	0.0000	0.0000	0.0010	pCi/m3
Air Qtr Comp	112	6/29/2025	I-131	0.0000	0.0000	0.0088	pCi/m3
Air Qtr Comp	304	9/29/2025	Be-7	0.0612	0.0197	0.0000	pCi/m3
Air Qtr Comp	304	9/29/2025	Cs-134	0.0000	0.0000	0.0012	pCi/m3
Air Qtr Comp	304	9/29/2025	Cs-137	0.0000	0.0000	0.0013	pCi/m3
Air Qtr Comp	304	9/29/2025	I-131	0.0000	0.0000	0.0095	pCi/m3
Air Qtr Comp	103	9/29/2025	Be-7	0.0695	0.0187	0.0000	pCi/m3
Air Qtr Comp	103	9/29/2025	Cs-134	0.0000	0.0000	0.0011	pCi/m3
Air Qtr Comp	103	9/29/2025	Cs-137	0.0000	0.0000	0.0014	pCi/m3
Air Qtr Comp	103	9/29/2025	I-131	0.0000	0.0000	0.0063	pCi/m3
Air Qtr Comp	116	9/29/2025	Be-7	0.0717	0.0338	0.0000	pCi/m3
Air Qtr Comp	116	9/29/2025	Cs-134	0.0000	0.0000	0.0025	pCi/m3
Air Qtr Comp	116	9/29/2025	Cs-137	0.0000	0.0000	0.0020	pCi/m3
Air Qtr Comp	116	9/29/2025	I-131	0.0000	0.0000	0.0222	pCi/m3
Air Qtr Comp	112	9/29/2025	Be-7	0.0421	0.0177	0.0000	pCi/m3
Air Qtr Comp	112	9/29/2025	Cs-134	0.0000	0.0000	0.0012	pCi/m3
Air Qtr Comp	112	9/29/2025	Cs-137	0.0000	0.0000	0.0012	pCi/m3
Air Qtr Comp	112	9/29/2025	I-131	0.0000	0.0000	0.0096	pCi/m3
Air Qtr Comp	304	12/29/2025	Be-7	0.0699	0.0299	0.0000	pCi/m3
Air Qtr Comp	304	12/29/2025	Cs-134	0.0000	0.0000	0.0031	pCi/m3
Air Qtr Comp	304	12/29/2025	Cs-137	0.0000	0.0000	0.0027	pCi/m3

Annual Radiological Environmental Operating Report		YEAR: 2025	Page 47 of 79
Company: Southern Nuclear		Plant: Hatch Nuclear Plant	

Attachment 2, Complete Data Table for All Analysis Results Obtained In 2025

Sample Type	Location	Date	Nuclide	Activity	95% CL	MDA	Units
Air Qtr Comp	304	12/29/2025	I-131	0.0000	0.0000	0.0000	pCi/m3
Air Qtr Comp	103	12/29/2025	Be-7	0.0619	0.0171	0.0000	pCi/m3
Air Qtr Comp	103	12/29/2025	Cs-134	0.0000	0.0000	0.0007	pCi/m3
Air Qtr Comp	103	12/29/2025	Cs-137	0.0000	0.0000	0.0009	pCi/m3
Air Qtr Comp	103	12/29/2025	I-131	0.0000	0.0000	0.0000	pCi/m3
Air Qtr Comp	116	12/29/2025	Be-7	0.0685	0.0187	0.0000	pCi/m3
Air Qtr Comp	116	12/29/2025	Cs-134	0.0000	0.0000	0.0011	pCi/m3
Air Qtr Comp	116	12/29/2025	Cs-137	0.0000	0.0000	0.0010	pCi/m3
Air Qtr Comp	116	12/29/2025	I-131	0.0000	0.0000	0.0000	pCi/m3
Air Qtr Comp	112	12/29/2025	Be-7	0.0534	0.0155	0.0000	pCi/m3
Air Qtr Comp	112	12/29/2025	Cs-134	0.0000	0.0000	0.0011	pCi/m3
Air Qtr Comp	112	12/29/2025	Cs-137	0.0000	0.0000	0.0010	pCi/m3
Air Qtr Comp	112	12/29/2025	I-131	0.0000	0.0000	0.0000	pCi/m3
Charcoal Ct	304	1/6/2025	I-131	0.0000	0.0000	0.0231	pCi/m3
Charcoal Ct	103	1/6/2025	I-131	0.0000	0.0000	0.0186	pCi/m3
Charcoal Ct	116	1/6/2025	I-131	0.0000	0.0000	0.0126	pCi/m3
Charcoal Ct	107	1/6/2025	I-131	0.0000	0.0000	0.0241	pCi/m3
Charcoal Ct	309	1/6/2025	I-131	0.0000	0.0000	0.0164	pCi/m3
Charcoal Ct	304	1/13/2025	I-131	0.0000	0.0000	0.0223	pCi/m3
Charcoal Ct	103	1/13/2025	I-131	0.0000	0.0000	0.0187	pCi/m3
Charcoal Ct	116	1/13/2025	I-131	0.0000	0.0000	0.0145	pCi/m3
Charcoal Ct	304	1/20/2025	I-131	0.0000	0.0000	0.0174	pCi/m3
Charcoal Ct	103	1/20/2025	I-131	0.0000	0.0000	0.0178	pCi/m3
Charcoal Ct	116	1/20/2025	I-131	0.0000	0.0000	0.0195	pCi/m3
Charcoal Ct	304	1/27/2025	I-131	0.0000	0.0000	0.0167	pCi/m3
Charcoal Ct	103	1/27/2025	I-131	0.0000	0.0000	0.0198	pCi/m3
Charcoal Ct	116	1/27/2025	I-131	0.0000	0.0000	0.0208	pCi/m3
Charcoal Ct	304	2/3/2025	I-131	0.0000	0.0000	0.0204	pCi/m3
Charcoal Ct	103	2/3/2025	I-131	0.0000	0.0000	0.0216	pCi/m3

Attachment 2, Complete Data Table for All Analysis Results Obtained In 2025

Sample Type	Location	Date	Nuclide	Activity	95% CL	MDA	Units
Charcoal Ct	116	2/3/2025	I-131	0.0000	0.0000	0.0194	pCi/m3
Charcoal Ct	304	2/10/2025	I-131	0.0000	0.0000	0.0234	pCi/m3
Charcoal Ct	103	2/10/2025	I-131	0.0000	0.0000	0.0173	pCi/m3
Charcoal Ct	116	2/10/2025	I-131	0.0000	0.0000	0.0128	pCi/m3
Charcoal Ct	304	2/17/2025	I-131	0.0000	0.0000	0.0252	pCi/m3
Charcoal Ct	103	2/17/2025	I-131	0.0000	0.0000	0.0297	pCi/m3
Charcoal Ct	116	2/17/2025	I-131	0.0000	0.0000	0.0120	pCi/m3
Charcoal Ct	112	2/17/2025	I-131	0.0000	0.0000	0.0231	pCi/m3
Charcoal Ct	112	2/24/2025	I-131	0.0000	0.0000	0.0189	pCi/m3
Charcoal Ct	304	2/24/2025	I-131	0.0000	0.0000	0.0239	pCi/m3
Charcoal Ct	103	2/24/2025	I-131	0.0000	0.0000	0.0220	pCi/m3
Charcoal Ct	116	2/24/2025	I-131	0.0000	0.0000	0.0166	pCi/m3
Charcoal Ct	304	3/3/2025	I-131	0.0000	0.0000	0.0274	pCi/m3
Charcoal Ct	103	3/3/2025	I-131	0.0000	0.0000	0.0193	pCi/m3
Charcoal Ct	116	3/3/2025	I-131	0.0000	0.0000	0.0114	pCi/m3
Charcoal Ct	112	3/3/2025	I-131	0.0000	0.0000	0.0230	pCi/m3
Charcoal Ct	304	3/10/2025	I-131	0.0000	0.0000	0.0142	pCi/m3
Charcoal Ct	103	3/10/2025	I-131	0.0000	0.0000	0.0185	pCi/m3
Charcoal Ct	116	3/10/2025	I-131	0.0000	0.0000	0.0183	pCi/m3
Charcoal Ct	112	3/10/2025	I-131	0.0000	0.0000	0.0203	pCi/m3
Charcoal Ct	304	3/17/2025	I-131	0.0000	0.0000	0.0268	pCi/m3
Charcoal Ct	103	3/17/2025	I-131	0.0000	0.0000	0.0247	pCi/m3
Charcoal Ct	116	3/17/2025	I-131	0.0000	0.0000	0.0198	pCi/m3
Charcoal Ct	112	3/17/2025	I-131	0.0000	0.0000	0.0201	pCi/m3
Charcoal Ct	112	3/24/2025	I-131	0.0000	0.0000	0.0204	pCi/m3
Charcoal Ct	304	3/24/2025	I-131	0.0000	0.0000	0.0126	pCi/m3
Charcoal Ct	103	3/24/2025	I-131	0.0000	0.0000	0.0116	pCi/m3
Charcoal Ct	116	3/24/2025	I-131	0.0000	0.0000	0.0175	pCi/m3
Charcoal Ct	103	3/31/2025	I-131	0.0000	0.0000	0.0259	pCi/m3

Annual Radiological Environmental Operating Report		YEAR: 2025	Page 49 of 79
Company: Southern Nuclear		Plant: Hatch Nuclear Plant	

Attachment 2, Complete Data Table for All Analysis Results Obtained In 2025

Sample Type	Location	Date	Nuclide	Activity	95% CL	MDA	Units
Charcoal Ct	304	3/31/2025	I-131	0.0000	0.0000	0.0244	pCi/m3
Charcoal Ct	116	3/31/2025	I-131	0.0000	0.0000	0.0242	pCi/m3
Charcoal Ct	112	3/31/2025	I-131	0.0000	0.0000	0.0198	pCi/m3
Charcoal Ct	112	4/8/2025	I-131	0.0000	0.0000	0.0152	pCi/m3
Charcoal Ct	304	4/8/2025	I-131	0.0000	0.0000	0.0203	pCi/m3
Charcoal Ct	103	4/8/2025	I-131	0.0000	0.0000	0.0186	pCi/m3
Charcoal Ct	116	4/8/2025	I-131	0.0000	0.0000	0.0157	pCi/m3
Charcoal Ct	304	4/14/2025	I-131	0.0000	0.0000	0.0289	pCi/m3
Charcoal Ct	103	4/14/2025	I-131	0.0000	0.0000	0.0259	pCi/m3
Charcoal Ct	116	4/14/2025	I-131	0.0000	0.0000	0.0138	pCi/m3
Charcoal Ct	112	4/14/2025	I-131	0.0000	0.0000	0.0262	pCi/m3
Charcoal Ct	304	4/21/2025	I-131	0.0000	0.0000	0.0284	pCi/m3
Charcoal Ct	103	4/21/2025	I-131	0.0000	0.0000	0.0190	pCi/m3
Charcoal Ct	116	4/21/2025	I-131	0.0000	0.0000	0.0146	pCi/m3
Charcoal Ct	112	4/21/2025	I-131	0.0000	0.0000	0.0172	pCi/m3
Charcoal Ct	304	4/28/2025	I-131	0.0000	0.0000	0.0242	pCi/m3
Charcoal Ct	103	4/28/2025	I-131	0.0000	0.0000	0.0233	pCi/m3
Charcoal Ct	116	4/28/2025	I-131	0.0000	0.0000	0.0143	pCi/m3
Charcoal Ct	112	4/28/2025	I-131	0.0000	0.0000	0.0201	pCi/m3
Charcoal Ct	304	5/5/2025	I-131	0.0000	0.0000	0.0321	pCi/m3
Charcoal Ct	103	5/5/2025	I-131	0.0000	0.0000	0.0238	pCi/m3
Charcoal Ct	116	5/5/2025	I-131	0.0000	0.0000	0.0169	pCi/m3
Charcoal Ct	112	5/5/2025	I-131	0.0000	0.0000	0.0258	pCi/m3
Charcoal Ct	304	5/12/2025	I-131	0.0000	0.0000	0.0234	pCi/m3
Charcoal Ct	116	5/12/2025	I-131	0.0000	0.0000	0.0110	pCi/m3
Charcoal Ct	112	5/12/2025	I-131	0.0000	0.0000	0.0179	pCi/m3
Charcoal Ct	103	5/13/2025	I-131	0.0000	0.0000	0.0165	pCi/m3
Charcoal Ct	304	5/19/2025	I-131	0.0000	0.0000	0.0258	pCi/m3
Charcoal Ct	103	5/19/2025	I-131	0.0000	0.0000	0.0249	pCi/m3

Attachment 2, Complete Data Table for All Analysis Results Obtained In 2025

Sample Type	Location	Date	Nuclide	Activity	95% CL	MDA	Units
Charcoal Ct	116	5/19/2025	I-131	0.0000	0.0000	0.0140	pCi/m3
Charcoal Ct	112	5/19/2025	I-131	0.0000	0.0000	0.0190	pCi/m3
Charcoal Ct	304	5/27/2025	I-131	0.0000	0.0000	0.0172	pCi/m3
Charcoal Ct	103	5/27/2025	I-131	0.0000	0.0000	0.0209	pCi/m3
Charcoal Ct	116	5/27/2025	I-131	0.0000	0.0000	0.0220	pCi/m3
Charcoal Ct	112	5/27/2025	I-131	0.0000	0.0000	0.0166	pCi/m3
Charcoal Ct	304	6/2/2025	I-131	0.0000	0.0000	0.0267	pCi/m3
Charcoal Ct	103	6/2/2025	I-131	0.0000	0.0000	0.0337	pCi/m3
Charcoal Ct	116	6/2/2025	I-131	0.0000	0.0000	0.0330	pCi/m3
Charcoal Ct	112	6/2/2025	I-131	0.0000	0.0000	0.0276	pCi/m3
Charcoal Ct	112	6/9/2025	I-131	0.0000	0.0000	0.0198	pCi/m3
Charcoal Ct	304	6/9/2025	I-131	0.0000	0.0000	0.0291	pCi/m3
Charcoal Ct	103	6/9/2025	I-131	0.0000	0.0000	0.0205	pCi/m3
Charcoal Ct	116	6/9/2025	I-131	0.0000	0.0000	0.0241	pCi/m3
Charcoal Ct	112	6/16/2025	I-131	0.0000	0.0000	0.0190	pCi/m3
Charcoal Ct	304	6/16/2025	I-131	0.0000	0.0000	0.0155	pCi/m3
Charcoal Ct	103	6/16/2025	I-131	0.0000	0.0000	0.0189	pCi/m3
Charcoal Ct	116	6/16/2025	I-131	0.0000	0.0000	0.0228	pCi/m3
Charcoal Ct	112	6/22/2025	I-131	0.0000	0.0000	0.0268	pCi/m3
Charcoal Ct	304	6/22/2025	I-131	0.0000	0.0000	0.0201	pCi/m3
Charcoal Ct	103	6/22/2025	I-131	0.0000	0.0000	0.0199	pCi/m3
Charcoal Ct	116	6/22/2025	I-131	0.0000	0.0000	0.0236	pCi/m3
Charcoal Ct	103	6/29/2025	I-131	0.0000	0.0000	0.0196	pCi/m3
Charcoal Ct	304	6/29/2025	I-131	0.0000	0.0000	0.0171	pCi/m3
Charcoal Ct	116	6/29/2025	I-131	0.0000	0.0000	0.0208	pCi/m3
Charcoal Ct	112	6/29/2025	I-131	0.0000	0.0000	0.0532	pCi/m3
Charcoal Ct	304	7/8/2025	I-131	0.0000	0.0000	0.0191	pCi/m3
Charcoal Ct	103	7/8/2025	I-131	0.0000	0.0000	0.0153	pCi/m3
Charcoal Ct	116	7/8/2025	I-131	0.0000	0.0000	0.0184	pCi/m3

Attachment 2, Complete Data Table for All Analysis Results Obtained In 2025

Sample Type	Location	Date	Nuclide	Activity	95% CL	MDA	Units
Charcoal Ct	112	7/8/2025	I-131	0.0000	0.0000	0.0233	pCi/m3
Charcoal Ct	304	7/15/2025	I-131	0.0000	0.0000	0.0246	pCi/m3
Charcoal Ct	103	7/15/2025	I-131	0.0000	0.0000	0.0197	pCi/m3
Charcoal Ct	116	7/15/2025	I-131	0.0000	0.0000	0.0185	pCi/m3
Charcoal Ct	112	7/15/2025	I-131	0.0000	0.0000	0.0232	pCi/m3
Charcoal Ct	304	7/21/2025	I-131	0.0000	0.0000	0.0225	pCi/m3
Charcoal Ct	103	7/21/2025	I-131	0.0000	0.0000	0.0296	pCi/m3
Charcoal Ct	116	7/21/2025	I-131	0.0000	0.0000	0.0305	pCi/m3
Charcoal Ct	112	7/21/2025	I-131	0.0000	0.0000	0.0266	pCi/m3
Charcoal Ct	304	7/28/2025	I-131	0.0000	0.0000	0.0303	pCi/m3
Charcoal Ct	103	7/28/2025	I-131	0.0000	0.0000	0.0189	pCi/m3
Charcoal Ct	116	7/28/2025	I-131	0.0000	0.0000	0.0188	pCi/m3
Charcoal Ct	304	8/4/2025	I-131	0.0000	0.0000	0.0305	pCi/m3
Charcoal Ct	103	8/4/2025	I-131	0.0000	0.0000	0.0204	pCi/m3
Charcoal Ct	116	8/4/2025	I-131	0.0000	0.0000	0.0366	pCi/m3
Charcoal Ct	304	8/11/2025	I-131	0.0000	0.0000	0.0264	pCi/m3
Charcoal Ct	103	8/11/2025	I-131	0.0000	0.0000	0.0282	pCi/m3
Charcoal Ct	116	8/11/2025	I-131	0.0000	0.0000	0.0206	pCi/m3
Charcoal Ct	304	8/18/2025	I-131	0.0000	0.0000	0.0253	pCi/m3
Charcoal Ct	103	8/18/2025	I-131	0.0000	0.0000	0.0217	pCi/m3
Charcoal Ct	116	8/18/2025	I-131	0.0000	0.0000	0.0215	pCi/m3
Charcoal Ct	112	8/18/2025	I-131	0.0000	0.0000	0.0178	pCi/m3
Charcoal Ct	112	8/25/2025	I-131	0.0000	0.0000	0.0228	pCi/m3
Charcoal Ct	304	8/25/2025	I-131	0.0000	0.0000	0.0244	pCi/m3
Charcoal Ct	103	8/25/2025	I-131	0.0000	0.0000	0.0243	pCi/m3
Charcoal Ct	116	8/25/2025	I-131	0.0000	0.0000	0.0301	pCi/m3
Charcoal Ct	304	9/2/2025	I-131	0.0000	0.0000	0.0157	pCi/m3
Charcoal Ct	103	9/2/2025	I-131	0.0000	0.0000	0.0206	pCi/m3
Charcoal Ct	116	9/2/2025	I-131	0.0000	0.0000	0.0236	pCi/m3

Attachment 2, Complete Data Table for All Analysis Results Obtained In 2025

Sample Type	Location	Date	Nuclide	Activity	95% CL	MDA	Units
Charcoal Ct	112	9/2/2025	I-131	0.0000	0.0000	0.0206	pCi/m3
Charcoal Ct	304	9/8/2025	I-131	0.0000	0.0000	0.0147	pCi/m3
Charcoal Ct	103	9/8/2025	I-131	0.0000	0.0000	0.0169	pCi/m3
Charcoal Ct	116	9/8/2025	I-131	0.0000	0.0000	0.0278	pCi/m3
Charcoal Ct	112	9/8/2025	I-131	0.0000	0.0000	0.0146	pCi/m3
Charcoal Ct	304	9/15/2025	I-131	0.0000	0.0000	0.0240	pCi/m3
Charcoal Ct	103	9/15/2025	I-131	0.0000	0.0000	0.0184	pCi/m3
Charcoal Ct	116	9/15/2025	I-131	0.0000	0.0000	0.0194	pCi/m3
Charcoal Ct	112	9/15/2025	I-131	0.0000	0.0000	0.0242	pCi/m3
Charcoal Ct	304	9/22/2025	I-131	0.0000	0.0000	0.0246	pCi/m3
Charcoal Ct	103	9/22/2025	I-131	0.0000	0.0000	0.0163	pCi/m3
Charcoal Ct	116	9/22/2025	I-131	0.0000	0.0000	0.0185	pCi/m3
Charcoal Ct	112	9/22/2025	I-131	0.0000	0.0000	0.0185	pCi/m3
Charcoal Ct	304	9/29/2025	I-131	0.0000	0.0000	0.0232	pCi/m3
Charcoal Ct	103	9/29/2025	I-131	0.0000	0.0000	0.0148	pCi/m3
Charcoal Ct	116	9/29/2025	I-131	0.0000	0.0000	0.0198	pCi/m3
Charcoal Ct	112	9/29/2025	I-131	0.0000	0.0000	0.0173	pCi/m3
Charcoal Ct	304	10/6/2025	I-131	0.0000	0.0000	0.0164	pCi/m3
Charcoal Ct	103	10/6/2025	I-131	0.0000	0.0000	0.0232	pCi/m3
Charcoal Ct	112	10/6/2025	I-131	0.0000	0.0000	0.0215	pCi/m3
Charcoal Ct	116	10/6/2025	I-131	0.0000	0.0000	0.0189	pCi/m3
Charcoal Ct	304	10/13/2025	I-131	0.0000	0.0000	0.0194	pCi/m3
Charcoal Ct	103	10/13/2025	I-131	0.0000	0.0000	0.0198	pCi/m3
Charcoal Ct	116	10/13/2025	I-131	0.0000	0.0000	0.0352	pCi/m3
Charcoal Ct	112	10/13/2025	I-131	0.0000	0.0000	0.0169	pCi/m3
Charcoal Ct	304	10/20/2025	I-131	0.0000	0.0000	0.0174	pCi/m3
Charcoal Ct	103	10/20/2025	I-131	0.0000	0.0000	0.0186	pCi/m3
Charcoal Ct	116	10/20/2025	I-131	0.0000	0.0000	0.0247	pCi/m3
Charcoal Ct	112	10/20/2025	I-131	0.0000	0.0000	0.0213	pCi/m3

Annual Radiological Environmental Operating Report		YEAR: 2025	Page 53 of 79
Company: Southern Nuclear		Plant: Hatch Nuclear Plant	

Attachment 2, Complete Data Table for All Analysis Results Obtained In 2025

Sample Type	Location	Date	Nuclide	Activity	95% CL	MDA	Units
Charcoal Ct	304	10/27/2025	I-131	0.0000	0.0000	0.0143	pCi/m3
Charcoal Ct	103	10/27/2025	I-131	0.0000	0.0000	0.0208	pCi/m3
Charcoal Ct	116	10/27/2025	I-131	0.0000	0.0000	0.0215	pCi/m3
Charcoal Ct	112	10/27/2025	I-131	0.0000	0.0000	0.0260	pCi/m3
Charcoal Ct	304	11/3/2025	I-131	0.0000	0.0000	0.0247	pCi/m3
Charcoal Ct	103	11/3/2025	I-131	0.0000	0.0000	0.0190	pCi/m3
Charcoal Ct	116	11/3/2025	I-131	0.0000	0.0000	0.0161	pCi/m3
Charcoal Ct	112	11/3/2025	I-131	0.0000	0.0000	0.0200	pCi/m3
Charcoal Ct	304	11/10/2025	I-131	0.0000	0.0000	0.0116	pCi/m3
Charcoal Ct	103	11/10/2025	I-131	0.0000	0.0000	0.0213	pCi/m3
Charcoal Ct	116	11/10/2025	I-131	0.0000	0.0000	0.0240	pCi/m3
Charcoal Ct	112	11/10/2025	I-131	0.0000	0.0000	0.0220	pCi/m3
Charcoal Ct	304	11/17/2025	I-131	0.0000	0.0000	0.0244	pCi/m3
Charcoal Ct	103	11/17/2025	I-131	0.0000	0.0000	0.0192	pCi/m3
Charcoal Ct	116	11/17/2025	I-131	0.0000	0.0000	0.0258	pCi/m3
Charcoal Ct	112	11/17/2025	I-131	0.0000	0.0000	0.0172	pCi/m3
Charcoal Ct	103	11/24/2025	I-131	0.0000	0.0000	0.0219	pCi/m3
Charcoal Ct	304	11/24/2025	I-131	0.0000	0.0000	0.0205	pCi/m3
Charcoal Ct	116	11/24/2025	I-131	0.0000	0.0000	0.0181	pCi/m3
Charcoal Ct	112	11/24/2025	I-131	0.0000	0.0000	0.0285	pCi/m3
Charcoal Ct	304	12/1/2025	I-131	0.0000	0.0000	0.0230	pCi/m3
Charcoal Ct	103	12/1/2025	I-131	0.0000	0.0000	0.0191	pCi/m3
Charcoal Ct	116	12/1/2025	I-131	0.0000	0.0000	0.0236	pCi/m3
Charcoal Ct	112	12/1/2025	I-131	0.0000	0.0000	0.0254	pCi/m3
Charcoal Ct	304	12/8/2025	I-131	0.0000	0.0000	0.0198	pCi/m3
Charcoal Ct	103	12/8/2025	I-131	0.0000	0.0000	0.0173	pCi/m3
Charcoal Ct	116	12/8/2025	I-131	0.0000	0.0000	0.0210	pCi/m3
Charcoal Ct	112	12/8/2025	I-131	0.0000	0.0000	0.0155	pCi/m3
Charcoal Ct	304	12/15/2025	I-131	0.0000	0.0000	0.0217	pCi/m3

Annual Radiological Environmental Operating Report		YEAR: 2025	Page 54 of 79
Company: Southern Nuclear		Plant: Hatch Nuclear Plant	

Attachment 2, Complete Data Table for All Analysis Results Obtained In 2025

Sample Type	Location	Date	Nuclide	Activity	95% CL	MDA	Units
Charcoal Ct	103	12/15/2025	I-131	0.0000	0.0000	0.0163	pCi/m3
Charcoal Ct	116	12/15/2025	I-131	0.0000	0.0000	0.0254	pCi/m3
Charcoal Ct	112	12/15/2025	I-131	0.0000	0.0000	0.0186	pCi/m3
Charcoal Ct	304	12/22/2025	I-131	0.0000	0.0000	0.0177	pCi/m3
Charcoal Ct	103	12/22/2025	I-131	0.0000	0.0000	0.0186	pCi/m3
Charcoal Ct	116	12/22/2025	I-131	0.0000	0.0000	0.0208	pCi/m3
Charcoal Ct	112	12/22/2025	I-131	0.0000	0.0000	0.0153	pCi/m3
Charcoal Ct	304	12/29/2025	I-131	0.0000	0.0000	0.0206	pCi/m3
Charcoal Ct	103	12/29/2025	I-131	0.0000	0.0000	0.0180	pCi/m3
Charcoal Ct	116	12/29/2025	I-131	0.0000	0.0000	0.0214	pCi/m3
Charcoal Ct	112	12/29/2025	I-131	0.0000	0.0000	0.0158	pCi/m3
Fish Gamma	170 Sucker	4/2/2025	Be-7	0.0000	0.0000	48.4050	pCi/Kg
Fish Gamma	170 Sucker	4/2/2025	Co-58	0.0000	0.0000	5.7344	pCi/Kg
Fish Gamma	170 Sucker	4/2/2025	Co-60	0.0000	0.0000	8.4798	pCi/Kg
Fish Gamma	170 Sucker	4/2/2025	Cs-134	0.0000	0.0000	6.3494	pCi/Kg
Fish Gamma	170 Sucker	4/2/2025	Cs-137	0.0000	0.0000	7.3082	pCi/Kg
Fish Gamma	170 Sucker	4/2/2025	Fe-59	0.0000	0.0000	18.0640	pCi/Kg
Fish Gamma	170 Sucker	4/2/2025	Mn-54	0.0000	0.0000	5.4507	pCi/Kg
Fish Gamma	170 Sucker	4/2/2025	Zn-65	0.0000	0.0000	20.0220	pCi/Kg
Fish Gamma	170 Sunfish	4/2/2025	Be-7	0.0000	0.0000	58.8480	pCi/Kg
Fish Gamma	172 Bass	4/2/2025	Be-7	0.0000	0.0000	89.9630	pCi/Kg
Fish Gamma	172 Sucker	4/2/2025	Be-7	0.0000	0.0000	52.3930	pCi/Kg
Fish Gamma	172 Bass	9/30/2025	Be-7	0.0000	0.0000	43.9930	pCi/Kg
Fish Gamma	172 Carp	9/30/2025	Be-7	0.0000	0.0000	53.4870	pCi/Kg
Fish Gamma	172 Sucker	9/30/2025	Be-7	0.0000	0.0000	46.7510	pCi/Kg
Fish Gamma	172 Sunfish	9/30/2025	Be-7	0.0000	0.0000	74.1630	pCi/Kg
Fish Gamma	170 Bass	9/30/2025	Be-7	0.0000	0.0000	39.1320	pCi/Kg
Fish Gamma	170 Sunfish	4/2/2025	Co-58	0.0000	0.0000	8.3380	pCi/Kg
Fish Gamma	170 Sunfish	4/2/2025	Co-60	0.0000	0.0000	9.3682	pCi/Kg

Attachment 2, Complete Data Table for All Analysis Results Obtained In 2025

Sample Type	Location	Date	Nuclide	Activity	95% CL	MDA	Units
Fish Gamma	170 Sunfish	4/2/2025	Cs-134	0.0000	0.0000	7.6308	pCi/Kg
Fish Gamma	170 Sunfish	4/2/2025	Cs-137	0.0000	0.0000	8.4531	pCi/Kg
Fish Gamma	170 Sunfish	4/2/2025	Fe-59	0.0000	0.0000	19.2240	pCi/Kg
Fish Gamma	170 Sunfish	4/2/2025	Mn-54	0.0000	0.0000	7.3475	pCi/Kg
Fish Gamma	170 Sunfish	4/2/2025	Zn-65	0.0000	0.0000	18.8410	pCi/Kg
Fish Gamma	170 Carp	9/30/2025	Be-7	0.0000	0.0000	89.0340	pCi/Kg
Fish Gamma	172 Bass	4/2/2025	Co-58	0.0000	0.0000	11.2850	pCi/Kg
Fish Gamma	172 Sucker	4/2/2025	Co-58	0.0000	0.0000	6.9635	pCi/Kg
Fish Gamma	172 Bass	9/30/2025	Co-58	0.0000	0.0000	6.4189	pCi/Kg
Fish Gamma	172 Carp	9/30/2025	Co-58	0.0000	0.0000	5.4230	pCi/Kg
Fish Gamma	172 Sucker	9/30/2025	Co-58	0.0000	0.0000	6.3694	pCi/Kg
Fish Gamma	172 Sunfish	9/30/2025	Co-58	0.0000	0.0000	8.0588	pCi/Kg
Fish Gamma	172 Bass	4/2/2025	Co-60	0.0000	0.0000	13.9230	pCi/Kg
Fish Gamma	172 Bass	4/2/2025	Cs-134	0.0000	0.0000	8.8956	pCi/Kg
Fish Gamma	172 Bass	4/2/2025	Cs-137	0.0000	0.0000	10.7580	pCi/Kg
Fish Gamma	172 Bass	4/2/2025	Fe-59	0.0000	0.0000	32.2220	pCi/Kg
Fish Gamma	172 Bass	4/2/2025	Mn-54	0.0000	0.0000	10.3800	pCi/Kg
Fish Gamma	172 Bass	4/2/2025	Zn-65	0.0000	0.0000	32.9530	pCi/Kg
Fish Gamma	170 Bass	9/30/2025	Co-58	0.0000	0.0000	5.4648	pCi/Kg
Fish Gamma	170 Carp	9/30/2025	Co-58	0.0000	0.0000	11.5270	pCi/Kg
Fish Gamma	172 Sucker	4/2/2025	Co-60	0.0000	0.0000	7.8498	pCi/Kg
Fish Gamma	172 Bass	9/30/2025	Co-60	0.0000	0.0000	9.2517	pCi/Kg
Fish Gamma	172 Carp	9/30/2025	Co-60	0.0000	0.0000	8.6096	pCi/Kg
Fish Gamma	172 Sucker	9/30/2025	Co-60	0.0000	0.0000	7.1997	pCi/Kg
Fish Gamma	172 Sucker	4/2/2025	Cs-134	0.0000	0.0000	7.1144	pCi/Kg
Fish Gamma	172 Sucker	4/2/2025	Cs-137	0.0000	0.0000	8.2051	pCi/Kg
Fish Gamma	172 Sucker	4/2/2025	Fe-59	0.0000	0.0000	18.4090	pCi/Kg
Fish Gamma	172 Sucker	4/2/2025	Mn-54	0.0000	0.0000	7.5977	pCi/Kg
Fish Gamma	172 Sucker	4/2/2025	Zn-65	0.0000	0.0000	19.3250	pCi/Kg

Attachment 2, Complete Data Table for All Analysis Results Obtained In 2025

Sample Type	Location	Date	Nuclide	Activity	95% CL	MDA	Units
Fish Gamma	172 Sunfish	9/30/2025	Co-60	0.0000	0.0000	10.0160	pCi/Kg
Fish Gamma	170 Bass	9/30/2025	Co-60	0.0000	0.0000	8.6786	pCi/Kg
Fish Gamma	170 Carp	9/30/2025	Co-60	0.0000	0.0000	14.1590	pCi/Kg
Fish Gamma	172 Bass	9/30/2025	Cs-134	0.0000	0.0000	6.0294	pCi/Kg
Fish Gamma	172 Carp	9/30/2025	Cs-134	0.0000	0.0000	5.7950	pCi/Kg
Fish Gamma	172 Bass	9/30/2025	Cs-137	0.0000	0.0000	7.1289	pCi/Kg
Fish Gamma	172 Bass	9/30/2025	Fe-59	0.0000	0.0000	15.9410	pCi/Kg
Fish Gamma	172 Bass	9/30/2025	Mn-54	0.0000	0.0000	6.8881	pCi/Kg
Fish Gamma	172 Bass	9/30/2025	Zn-65	0.0000	0.0000	21.5450	pCi/Kg
Fish Gamma	172 Sucker	9/30/2025	Cs-134	0.0000	0.0000	5.6136	pCi/Kg
Fish Gamma	172 Sunfish	9/30/2025	Cs-134	0.0000	0.0000	7.2078	pCi/Kg
Fish Gamma	170 Bass	9/30/2025	Cs-134	0.0000	0.0000	5.2038	pCi/Kg
Fish Gamma	170 Carp	9/30/2025	Cs-134	0.0000	0.0000	8.2482	pCi/Kg
Fish Gamma	172 Carp	9/30/2025	Cs-137	17.2960	10.0240	0.0000	pCi/Kg
Fish Gamma	172 Carp	9/30/2025	Fe-59	0.0000	0.0000	16.6660	pCi/Kg
Fish Gamma	172 Carp	9/30/2025	Mn-54	0.0000	0.0000	6.1894	pCi/Kg
Fish Gamma	172 Carp	9/30/2025	Zn-65	0.0000	0.0000	18.1820	pCi/Kg
Fish Gamma	172 Sucker	9/30/2025	Cs-137	0.0000	0.0000	5.6664	pCi/Kg
Fish Gamma	172 Sunfish	9/30/2025	Cs-137	0.0000	0.0000	8.3069	pCi/Kg
Fish Gamma	170 Bass	9/30/2025	Cs-137	0.0000	0.0000	6.0493	pCi/Kg
Fish Gamma	170 Carp	9/30/2025	Cs-137	0.0000	0.0000	12.3840	pCi/Kg
Fish Gamma	172 Sucker	9/30/2025	Fe-59	0.0000	0.0000	16.3220	pCi/Kg
Fish Gamma	172 Sucker	9/30/2025	Mn-54	0.0000	0.0000	6.2652	pCi/Kg
Fish Gamma	172 Sucker	9/30/2025	Zn-65	0.0000	0.0000	18.1280	pCi/Kg
Fish Gamma	172 Sunfish	9/30/2025	Fe-59	0.0000	0.0000	22.0240	pCi/Kg
Fish Gamma	170 Bass	9/30/2025	Fe-59	0.0000	0.0000	16.0630	pCi/Kg
Fish Gamma	170 Carp	9/30/2025	Fe-59	0.0000	0.0000	27.7220	pCi/Kg
Fish Gamma	172 Sunfish	9/30/2025	Mn-54	0.0000	0.0000	8.0649	pCi/Kg
Fish Gamma	172 Sunfish	9/30/2025	Zn-65	0.0000	0.0000	23.9810	pCi/Kg

Annual Radiological Environmental Operating Report		YEAR: 2025	Page 57 of 79
Company: Southern Nuclear		Plant: Hatch Nuclear Plant	

Attachment 2, Complete Data Table for All Analysis Results Obtained In 2025

Sample Type	Location	Date	Nuclide	Activity	95% CL	MDA	Units
Fish Gamma	170 Bass	9/30/2025	Mn-54	0.0000	0.0000	5.7021	pCi/Kg
Fish Gamma	170 Bass	9/30/2025	Zn-65	0.0000	0.0000	15.9800	pCi/Kg
Fish Gamma	170 Carp	9/30/2025	Mn-54	0.0000	0.0000	10.1490	pCi/Kg
Fish Gamma	170 Carp	9/30/2025	Zn-65	0.0000	0.0000	35.2640	pCi/Kg
H-3 Water	172	3/18/2025	Tritium	0.0000	0.0000	0.0000	pCi/L
H-3 Water	170	3/18/2025	Tritium	0.0000	0.0000	0.0000	pCi/L
H-3 Water	172	6/22/2025	Tritium	139.0000	105.0000	0.0000	pCi/L
H-3 Water	170	6/22/2025	Tritium	127.0000	105.0000	0.0000	pCi/L
H-3 Water	172	9/30/2025	Tritium	0.0000	0.0000	0.0000	pCi/L
H-3 Water	170	9/30/2025	Tritium	0.0000	0.0000	0.0000	pCi/L
H-3 Water	172	12/22/2025	Tritium	0.0000	0.0000	0.0000	pCi/L
H-3 Water	170	12/22/2025	Tritium	0.0000	0.0000	0.0000	pCi/L
River Water	172	1/20/2025	Ba-140	0.0000	0.0000	18.5140	pCi/L
River Water	172	1/20/2025	Be-7	0.0000	0.0000	43.6780	pCi/L
River Water	172	1/20/2025	Co-58	0.0000	0.0000	5.1798	pCi/L
River Water	172	1/20/2025	Co-60	0.0000	0.0000	6.4633	pCi/L
River Water	172	1/20/2025	Cs-134	0.0000	0.0000	5.3651	pCi/L
River Water	172	1/20/2025	Cs-137	0.0000	0.0000	5.5835	pCi/L
River Water	172	1/20/2025	Fe-59	0.0000	0.0000	10.7090	pCi/L
River Water	172	1/20/2025	I-131	0.0000	0.0000	5.5181	pCi/L
River Water	172	1/20/2025	La-140	0.0000	0.0000	6.8339	pCi/L
River Water	172	1/20/2025	Mn-54	0.0000	0.0000	4.1166	pCi/L
River Water	172	1/20/2025	Nb-95	0.0000	0.0000	5.2838	pCi/L
River Water	172	1/20/2025	Zn-65	0.0000	0.0000	10.5750	pCi/L
River Water	172	1/20/2025	Zr-95	0.0000	0.0000	9.6701	pCi/L
River Water	170	1/20/2025	Ba-140	0.0000	0.0000	16.2150	pCi/L
River Water	170	1/20/2025	Be-7	0.0000	0.0000	40.4230	pCi/L
River Water	170	1/20/2025	Co-58	0.0000	0.0000	5.4378	pCi/L
River Water	170	1/20/2025	Co-60	0.0000	0.0000	5.9058	pCi/L

Annual Radiological Environmental Operating Report		YEAR: 2025	Page 58 of 79
Company: Southern Nuclear		Plant: Hatch Nuclear Plant	

Attachment 2, Complete Data Table for All Analysis Results Obtained In 2025

Sample Type	Location	Date	Nuclide	Activity	95% CL	MDA	Units
River Water	170	1/20/2025	Cs-134	0.0000	0.0000	4.6816	pCi/L
River Water	170	1/20/2025	Cs-137	0.0000	0.0000	4.5015	pCi/L
River Water	170	1/20/2025	Fe-59	0.0000	0.0000	11.5580	pCi/L
River Water	170	1/20/2025	I-131	0.0000	0.0000	5.5458	pCi/L
River Water	170	1/20/2025	La-140	0.0000	0.0000	9.8455	pCi/L
River Water	170	1/20/2025	Mn-54	0.0000	0.0000	5.1596	pCi/L
River Water	170	1/20/2025	Nb-95	0.0000	0.0000	5.3700	pCi/L
River Water	170	1/20/2025	Zn-65	0.0000	0.0000	13.8030	pCi/L
River Water	170	1/20/2025	Zr-95	0.0000	0.0000	9.8265	pCi/L
River Water	172	2/18/2025	Ba-140	0.0000	0.0000	16.4140	pCi/L
River Water	172	2/18/2025	Be-7	0.0000	0.0000	34.4430	pCi/L
River Water	172	2/18/2025	Co-58	0.0000	0.0000	4.4452	pCi/L
River Water	172	2/18/2025	Co-60	0.0000	0.0000	5.3461	pCi/L
River Water	172	2/18/2025	Cs-134	0.0000	0.0000	4.7917	pCi/L
River Water	172	2/18/2025	Cs-137	0.0000	0.0000	4.6802	pCi/L
River Water	172	2/18/2025	Fe-59	0.0000	0.0000	11.4150	pCi/L
River Water	172	2/18/2025	I-131	0.0000	0.0000	4.9462	pCi/L
River Water	172	2/18/2025	La-140	0.0000	0.0000	5.6808	pCi/L
River Water	172	2/18/2025	Mn-54	0.0000	0.0000	4.0245	pCi/L
River Water	172	2/18/2025	Nb-95	0.0000	0.0000	4.9719	pCi/L
River Water	172	2/18/2025	Zn-65	0.0000	0.0000	13.0220	pCi/L
River Water	172	2/18/2025	Zr-95	0.0000	0.0000	7.1296	pCi/L
River Water	170	2/18/2025	Ba-140	0.0000	0.0000	18.7550	pCi/L
River Water	170	2/18/2025	Be-7	0.0000	0.0000	36.7120	pCi/L
River Water	170	2/18/2025	Co-58	0.0000	0.0000	4.4756	pCi/L
River Water	170	2/18/2025	Co-60	0.0000	0.0000	4.6919	pCi/L
River Water	170	2/18/2025	Cs-134	0.0000	0.0000	5.3016	pCi/L
River Water	170	2/18/2025	Cs-137	0.0000	0.0000	4.6067	pCi/L
River Water	170	2/18/2025	Fe-59	0.0000	0.0000	11.0300	pCi/L

Attachment 2, Complete Data Table for All Analysis Results Obtained In 2025

Sample Type	Location	Date	Nuclide	Activity	95% CL	MDA	Units
River Water	170	2/18/2025	I-131	0.0000	0.0000	5.2395	pCi/L
River Water	170	2/18/2025	La-140	0.0000	0.0000	7.1438	pCi/L
River Water	170	2/18/2025	Mn-54	0.0000	0.0000	4.5820	pCi/L
River Water	170	2/18/2025	Nb-95	0.0000	0.0000	4.9272	pCi/L
River Water	170	2/18/2025	Zn-65	0.0000	0.0000	10.3160	pCi/L
River Water	170	2/18/2025	Zr-95	0.0000	0.0000	6.6969	pCi/L
River Water	172	3/18/2025	Ba-140	0.0000	0.0000	17.0760	pCi/L
River Water	172	3/18/2025	Be-7	0.0000	0.0000	34.8800	pCi/L
River Water	172	3/18/2025	Co-58	0.0000	0.0000	4.2029	pCi/L
River Water	172	3/18/2025	Co-60	0.0000	0.0000	4.7614	pCi/L
River Water	172	3/18/2025	Cs-134	0.0000	0.0000	4.4002	pCi/L
River Water	172	3/18/2025	Cs-137	0.0000	0.0000	4.7528	pCi/L
River Water	172	3/18/2025	Fe-59	0.0000	0.0000	9.2898	pCi/L
River Water	172	3/18/2025	I-131	0.0000	0.0000	5.7056	pCi/L
River Water	172	3/18/2025	La-140	0.0000	0.0000	5.9025	pCi/L
River Water	172	3/18/2025	Mn-54	0.0000	0.0000	4.6587	pCi/L
River Water	172	3/18/2025	Nb-95	0.0000	0.0000	4.4885	pCi/L
River Water	172	3/18/2025	Zn-65	0.0000	0.0000	11.3370	pCi/L
River Water	172	3/18/2025	Zr-95	0.0000	0.0000	7.6871	pCi/L
River Water	170	3/18/2025	Ba-140	0.0000	0.0000	16.7930	pCi/L
River Water	170	3/18/2025	Be-7	0.0000	0.0000	40.6160	pCi/L
River Water	170	3/18/2025	Co-58	0.0000	0.0000	4.4739	pCi/L
River Water	170	3/18/2025	Co-60	0.0000	0.0000	5.9353	pCi/L
River Water	170	3/18/2025	Cs-134	0.0000	0.0000	4.5385	pCi/L
River Water	170	3/18/2025	Cs-137	0.0000	0.0000	5.1630	pCi/L
River Water	170	3/18/2025	Fe-59	0.0000	0.0000	9.7979	pCi/L
River Water	170	3/18/2025	I-131	0.0000	0.0000	5.4202	pCi/L
River Water	170	3/18/2025	La-140	0.0000	0.0000	6.2877	pCi/L
River Water	170	3/18/2025	Mn-54	0.0000	0.0000	4.3675	pCi/L

Annual Radiological Environmental Operating Report		YEAR: 2025	Page 60 of 79
Company: Southern Nuclear		Plant: Hatch Nuclear Plant	

Attachment 2, Complete Data Table for All Analysis Results Obtained In 2025

Sample Type	Location	Date	Nuclide	Activity	95% CL	MDA	Units
River Water	170	3/18/2025	Nb-95	0.0000	0.0000	4.6459	pCi/L
River Water	170	3/18/2025	Zn-65	0.0000	0.0000	11.0350	pCi/L
River Water	170	3/18/2025	Zr-95	0.0000	0.0000	8.2228	pCi/L
River Water	172	4/29/2025	Ba-140	0.0000	0.0000	16.5830	pCi/L
River Water	172	4/29/2025	Be-7	0.0000	0.0000	38.8450	pCi/L
River Water	172	4/29/2025	Co-58	0.0000	0.0000	5.6035	pCi/L
River Water	172	4/29/2025	Co-60	0.0000	0.0000	5.8567	pCi/L
River Water	172	4/29/2025	Cs-134	0.0000	0.0000	4.3901	pCi/L
River Water	172	4/29/2025	Cs-137	0.0000	0.0000	5.5057	pCi/L
River Water	172	4/29/2025	Fe-59	0.0000	0.0000	10.0550	pCi/L
River Water	172	4/29/2025	I-131	0.0000	0.0000	5.3183	pCi/L
River Water	172	4/29/2025	La-140	0.0000	0.0000	6.1107	pCi/L
River Water	172	4/29/2025	Mn-54	0.0000	0.0000	5.8209	pCi/L
River Water	172	4/29/2025	Nb-95	0.0000	0.0000	4.3641	pCi/L
River Water	172	4/29/2025	Zn-65	0.0000	0.0000	13.4710	pCi/L
River Water	172	4/29/2025	Zr-95	0.0000	0.0000	7.4378	pCi/L
River Water	170	4/29/2025	Ba-140	0.0000	0.0000	18.5760	pCi/L
River Water	170	4/29/2025	Be-7	0.0000	0.0000	39.0030	pCi/L
River Water	170	4/29/2025	Co-58	0.0000	0.0000	4.6785	pCi/L
River Water	170	4/29/2025	Co-60	0.0000	0.0000	7.4260	pCi/L
River Water	170	4/29/2025	Cs-134	0.0000	0.0000	5.3654	pCi/L
River Water	170	4/29/2025	Cs-137	0.0000	0.0000	5.8573	pCi/L
River Water	170	4/29/2025	Fe-59	0.0000	0.0000	11.2230	pCi/L
River Water	170	4/29/2025	I-131	0.0000	0.0000	5.1718	pCi/L
River Water	170	4/29/2025	La-140	0.0000	0.0000	9.5408	pCi/L
River Water	170	4/29/2025	Mn-54	0.0000	0.0000	5.0542	pCi/L
River Water	170	4/29/2025	Nb-95	0.0000	0.0000	6.1868	pCi/L
River Water	170	4/29/2025	Zn-65	0.0000	0.0000	11.8020	pCi/L
River Water	170	4/29/2025	Zr-95	0.0000	0.0000	8.3406	pCi/L

Attachment 2, Complete Data Table for All Analysis Results Obtained In 2025

Sample Type	Location	Date	Nuclide	Activity	95% CL	MDA	Units
River Water	172	5/27/2025	Ba-140	0.0000	0.0000	17.2780	pCi/L
River Water	172	5/27/2025	Be-7	0.0000	0.0000	37.3110	pCi/L
River Water	172	5/27/2025	Co-58	0.0000	0.0000	5.1687	pCi/L
River Water	172	5/27/2025	Co-60	0.0000	0.0000	6.3500	pCi/L
River Water	172	5/27/2025	Cs-134	0.0000	0.0000	4.4082	pCi/L
River Water	172	5/27/2025	Cs-137	0.0000	0.0000	4.7050	pCi/L
River Water	172	5/27/2025	Fe-59	0.0000	0.0000	8.3716	pCi/L
River Water	172	5/27/2025	I-131	0.0000	0.0000	4.8242	pCi/L
River Water	172	5/27/2025	La-140	0.0000	0.0000	8.4702	pCi/L
River Water	172	5/27/2025	Mn-54	0.0000	0.0000	4.7863	pCi/L
River Water	172	5/27/2025	Nb-95	0.0000	0.0000	4.4675	pCi/L
River Water	172	5/27/2025	Zn-65	0.0000	0.0000	11.3810	pCi/L
River Water	172	5/27/2025	Zr-95	0.0000	0.0000	7.8925	pCi/L
River Water	170	5/27/2025	Ba-140	0.0000	0.0000	18.4550	pCi/L
River Water	170	5/27/2025	Be-7	0.0000	0.0000	37.3610	pCi/L
River Water	170	5/27/2025	Co-58	0.0000	0.0000	4.8413	pCi/L
River Water	170	5/27/2025	Co-60	0.0000	0.0000	3.5415	pCi/L
River Water	170	5/27/2025	Cs-134	0.0000	0.0000	4.1943	pCi/L
River Water	170	5/27/2025	Cs-137	0.0000	0.0000	4.5701	pCi/L
River Water	170	5/27/2025	Fe-59	0.0000	0.0000	11.6490	pCi/L
River Water	170	5/27/2025	I-131	0.0000	0.0000	5.2030	pCi/L
River Water	170	5/27/2025	La-140	0.0000	0.0000	7.5427	pCi/L
River Water	170	5/27/2025	Mn-54	0.0000	0.0000	4.3734	pCi/L
River Water	170	5/27/2025	Nb-95	0.0000	0.0000	4.1572	pCi/L
River Water	170	5/27/2025	Zn-65	0.0000	0.0000	11.5480	pCi/L
River Water	170	5/27/2025	Zr-95	0.0000	0.0000	8.0110	pCi/L
River Water	172	6/22/2025	Ba-140	0.0000	0.0000	14.6780	pCi/L
River Water	172	6/22/2025	Be-7	0.0000	0.0000	40.6910	pCi/L
River Water	172	6/22/2025	Co-58	0.0000	0.0000	4.9178	pCi/L

Attachment 2, Complete Data Table for All Analysis Results Obtained In 2025

Sample Type	Location	Date	Nuclide	Activity	95% CL	MDA	Units
River Water	172	6/22/2025	Co-60	0.0000	0.0000	5.2355	pCi/L
River Water	172	6/22/2025	Cs-134	0.0000	0.0000	4.3406	pCi/L
River Water	172	6/22/2025	Cs-137	0.0000	0.0000	4.6067	pCi/L
River Water	172	6/22/2025	Fe-59	0.0000	0.0000	10.4550	pCi/L
River Water	172	6/22/2025	I-131	0.0000	0.0000	4.9652	pCi/L
River Water	172	6/22/2025	La-140	0.0000	0.0000	8.0152	pCi/L
River Water	172	6/22/2025	Mn-54	0.0000	0.0000	5.5088	pCi/L
River Water	172	6/22/2025	Nb-95	0.0000	0.0000	4.9369	pCi/L
River Water	172	6/22/2025	Zn-65	0.0000	0.0000	10.6870	pCi/L
River Water	172	6/22/2025	Zr-95	0.0000	0.0000	7.5182	pCi/L
River Water	170	6/22/2025	Ba-140	0.0000	0.0000	18.3870	pCi/L
River Water	170	6/22/2025	Be-7	0.0000	0.0000	35.9190	pCi/L
River Water	170	6/22/2025	Co-58	0.0000	0.0000	4.6585	pCi/L
River Water	170	6/22/2025	Co-60	0.0000	0.0000	3.9129	pCi/L
River Water	170	6/22/2025	Cs-134	0.0000	0.0000	4.5565	pCi/L
River Water	170	6/22/2025	Cs-137	0.0000	0.0000	5.3839	pCi/L
River Water	170	6/22/2025	Fe-59	0.0000	0.0000	11.3870	pCi/L
River Water	170	6/22/2025	I-131	0.0000	0.0000	5.5370	pCi/L
River Water	170	6/22/2025	La-140	0.0000	0.0000	5.3228	pCi/L
River Water	170	6/22/2025	Mn-54	0.0000	0.0000	3.8362	pCi/L
River Water	170	6/22/2025	Nb-95	0.0000	0.0000	5.1845	pCi/L
River Water	170	6/22/2025	Zn-65	0.0000	0.0000	12.1260	pCi/L
River Water	170	6/22/2025	Zr-95	0.0000	0.0000	8.4629	pCi/L
River Water	170	7/22/2025	Ba-140	0.0000	0.0000	20.1780	pCi/L
River Water	170	7/22/2025	Be-7	0.0000	0.0000	46.7280	pCi/L
River Water	170	7/22/2025	Co-58	0.0000	0.0000	5.2967	pCi/L
River Water	170	7/22/2025	Co-60	0.0000	0.0000	6.0083	pCi/L
River Water	170	7/22/2025	Cs-134	0.0000	0.0000	5.7628	pCi/L
River Water	170	7/22/2025	Cs-137	0.0000	0.0000	5.7123	pCi/L

Attachment 2, Complete Data Table for All Analysis Results Obtained In 2025

Sample Type	Location	Date	Nuclide	Activity	95% CL	MDA	Units
River Water	170	7/22/2025	Fe-59	0.0000	0.0000	11.6280	pCi/L
River Water	170	7/22/2025	I-131	0.0000	0.0000	6.6890	pCi/L
River Water	170	7/22/2025	La-140	0.0000	0.0000	9.9818	pCi/L
River Water	170	7/22/2025	Mn-54	0.0000	0.0000	4.6379	pCi/L
River Water	170	7/22/2025	Nb-95	0.0000	0.0000	5.5686	pCi/L
River Water	170	7/22/2025	Zn-65	0.0000	0.0000	12.3580	pCi/L
River Water	170	7/22/2025	Zr-95	0.0000	0.0000	6.7730	pCi/L
River Water	172	7/22/2025	Ba-140	0.0000	0.0000	17.2410	pCi/L
River Water	172	7/22/2025	Be-7	0.0000	0.0000	44.4330	pCi/L
River Water	172	7/22/2025	Co-58	0.0000	0.0000	5.8168	pCi/L
River Water	172	7/22/2025	Co-60	0.0000	0.0000	7.7136	pCi/L
River Water	172	7/22/2025	Cs-134	0.0000	0.0000	5.6379	pCi/L
River Water	172	7/22/2025	Cs-137	0.0000	0.0000	4.9790	pCi/L
River Water	172	7/22/2025	Fe-59	0.0000	0.0000	13.3970	pCi/L
River Water	172	7/22/2025	I-131	0.0000	0.0000	5.4683	pCi/L
River Water	172	7/22/2025	La-140	0.0000	0.0000	9.1456	pCi/L
River Water	172	7/22/2025	Mn-54	0.0000	0.0000	5.8548	pCi/L
River Water	172	7/22/2025	Nb-95	0.0000	0.0000	5.2887	pCi/L
River Water	172	7/22/2025	Zn-65	0.0000	0.0000	12.3560	pCi/L
River Water	172	7/22/2025	Zr-95	0.0000	0.0000	7.0280	pCi/L
River Water	172	8/19/2025	Ba-140	0.0000	0.0000	18.8410	pCi/L
River Water	172	8/19/2025	Be-7	0.0000	0.0000	40.5690	pCi/L
River Water	172	8/19/2025	Co-58	0.0000	0.0000	6.4882	pCi/L
River Water	172	8/19/2025	Co-60	0.0000	0.0000	5.6996	pCi/L
River Water	172	8/19/2025	Cs-134	0.0000	0.0000	4.7626	pCi/L
River Water	172	8/19/2025	Cs-137	0.0000	0.0000	6.2407	pCi/L
River Water	172	8/19/2025	Fe-59	0.0000	0.0000	12.5570	pCi/L
River Water	172	8/19/2025	I-131	0.0000	0.0000	5.2592	pCi/L
River Water	172	8/19/2025	La-140	0.0000	0.0000	7.7722	pCi/L

Attachment 2, Complete Data Table for All Analysis Results Obtained In 2025

Sample Type	Location	Date	Nuclide	Activity	95% CL	MDA	Units
River Water	172	8/19/2025	Mn-54	0.0000	0.0000	6.6952	pCi/L
River Water	172	8/19/2025	Nb-95	0.0000	0.0000	5.4139	pCi/L
River Water	172	8/19/2025	Zn-65	0.0000	0.0000	13.8510	pCi/L
River Water	172	8/19/2025	Zr-95	0.0000	0.0000	8.0261	pCi/L
River Water	170	8/19/2025	Ba-140	0.0000	0.0000	22.6220	pCi/L
River Water	170	8/19/2025	Be-7	0.0000	0.0000	35.9690	pCi/L
River Water	170	8/19/2025	Co-58	0.0000	0.0000	6.0850	pCi/L
River Water	170	8/19/2025	Co-60	0.0000	0.0000	6.3347	pCi/L
River Water	170	8/19/2025	Cs-134	0.0000	0.0000	5.6381	pCi/L
River Water	170	8/19/2025	Cs-137	0.0000	0.0000	5.5316	pCi/L
River Water	170	8/19/2025	Fe-59	0.0000	0.0000	12.9630	pCi/L
River Water	170	8/19/2025	I-131	0.0000	0.0000	6.0048	pCi/L
River Water	170	8/19/2025	La-140	0.0000	0.0000	8.0641	pCi/L
River Water	170	8/19/2025	Mn-54	0.0000	0.0000	5.6126	pCi/L
River Water	170	8/19/2025	Nb-95	0.0000	0.0000	5.1806	pCi/L
River Water	170	8/19/2025	Zn-65	0.0000	0.0000	14.3050	pCi/L
River Water	170	8/19/2025	Zr-95	0.0000	0.0000	10.4540	pCi/L
River Water	172	9/30/2025	Ba-140	0.0000	0.0000	18.5680	pCi/L
River Water	172	9/30/2025	Be-7	0.0000	0.0000	44.6210	pCi/L
River Water	172	9/30/2025	Co-58	0.0000	0.0000	4.6456	pCi/L
River Water	172	9/30/2025	Co-60	0.0000	0.0000	6.8547	pCi/L
River Water	172	9/30/2025	Cs-134	0.0000	0.0000	5.2532	pCi/L
River Water	172	9/30/2025	Cs-137	0.0000	0.0000	5.4761	pCi/L
River Water	172	9/30/2025	Fe-59	0.0000	0.0000	10.3550	pCi/L
River Water	172	9/30/2025	I-131	0.0000	0.0000	5.4441	pCi/L
River Water	172	9/30/2025	La-140	0.0000	0.0000	9.4676	pCi/L
River Water	172	9/30/2025	Mn-54	0.0000	0.0000	4.6772	pCi/L
River Water	172	9/30/2025	Nb-95	0.0000	0.0000	5.3324	pCi/L
River Water	172	9/30/2025	Zn-65	0.0000	0.0000	13.9570	pCi/L

Attachment 2, Complete Data Table for All Analysis Results Obtained In 2025

Sample Type	Location	Date	Nuclide	Activity	95% CL	MDA	Units
River Water	172	9/30/2025	Zr-95	0.0000	0.0000	8.7791	pCi/L
River Water	170	9/30/2025	Ba-140	0.0000	0.0000	15.2120	pCi/L
River Water	170	9/30/2025	Be-7	0.0000	0.0000	40.9260	pCi/L
River Water	170	9/30/2025	Co-58	0.0000	0.0000	3.8068	pCi/L
River Water	170	9/30/2025	Co-60	0.0000	0.0000	5.9188	pCi/L
River Water	170	9/30/2025	Cs-134	0.0000	0.0000	3.9277	pCi/L
River Water	170	9/30/2025	Cs-137	0.0000	0.0000	5.3881	pCi/L
River Water	170	9/30/2025	Fe-59	0.0000	0.0000	7.6192	pCi/L
River Water	170	9/30/2025	I-131	0.0000	0.0000	4.5686	pCi/L
River Water	170	9/30/2025	La-140	0.0000	0.0000	7.2954	pCi/L
River Water	170	9/30/2025	Mn-54	0.0000	0.0000	4.2193	pCi/L
River Water	170	9/30/2025	Nb-95	0.0000	0.0000	4.5539	pCi/L
River Water	170	9/30/2025	Zn-65	0.0000	0.0000	9.3677	pCi/L
River Water	170	9/30/2025	Zr-95	0.0000	0.0000	6.9623	pCi/L
River Water	172	10/29/2025	Ba-140	0.0000	0.0000	21.8790	pCi/L
River Water	172	10/29/2025	Be-7	0.0000	0.0000	46.5870	pCi/L
River Water	172	10/29/2025	Co-58	0.0000	0.0000	6.4057	pCi/L
River Water	172	10/29/2025	Co-60	0.0000	0.0000	7.1834	pCi/L
River Water	172	10/29/2025	Cs-134	0.0000	0.0000	5.9610	pCi/L
River Water	172	10/29/2025	Cs-137	0.0000	0.0000	5.3468	pCi/L
River Water	172	10/29/2025	Fe-59	0.0000	0.0000	11.8920	pCi/L
River Water	172	10/29/2025	I-131	0.0000	0.0000	6.6582	pCi/L
River Water	172	10/29/2025	La-140	0.0000	0.0000	10.1960	pCi/L
River Water	172	10/29/2025	Mn-54	0.0000	0.0000	5.6136	pCi/L
River Water	172	10/29/2025	Nb-95	0.0000	0.0000	6.1698	pCi/L
River Water	172	10/29/2025	Zn-65	0.0000	0.0000	15.9000	pCi/L
River Water	172	10/29/2025	Zr-95	0.0000	0.0000	11.2650	pCi/L
River Water	170	10/29/2025	Ba-140	0.0000	0.0000	13.4040	pCi/L
River Water	170	10/29/2025	Be-7	0.0000	0.0000	47.7890	pCi/L

Attachment 2, Complete Data Table for All Analysis Results Obtained In 2025

Sample Type	Location	Date	Nuclide	Activity	95% CL	MDA	Units
River Water	170	10/29/2025	Co-58	0.0000	0.0000	5.4789	pCi/L
River Water	170	10/29/2025	Co-60	0.0000	0.0000	6.8035	pCi/L
River Water	170	10/29/2025	Cs-134	0.0000	0.0000	5.1733	pCi/L
River Water	170	10/29/2025	Cs-137	0.0000	0.0000	5.7224	pCi/L
River Water	170	10/29/2025	Fe-59	0.0000	0.0000	14.1250	pCi/L
River Water	170	10/29/2025	I-131	0.0000	0.0000	5.5451	pCi/L
River Water	170	10/29/2025	La-140	0.0000	0.0000	7.6878	pCi/L
River Water	170	10/29/2025	Mn-54	0.0000	0.0000	5.3702	pCi/L
River Water	170	10/29/2025	Nb-95	0.0000	0.0000	6.1681	pCi/L
River Water	170	10/29/2025	Zn-65	0.0000	0.0000	15.1720	pCi/L
River Water	170	10/29/2025	Zr-95	0.0000	0.0000	7.7087	pCi/L
River Water	172	11/24/2025	Ba-140	0.0000	0.0000	18.6240	pCi/L
River Water	172	11/24/2025	Be-7	0.0000	0.0000	36.7860	pCi/L
River Water	172	11/24/2025	Co-58	0.0000	0.0000	4.3093	pCi/L
River Water	172	11/24/2025	Co-60	0.0000	0.0000	3.6797	pCi/L
River Water	172	11/24/2025	Cs-134	0.0000	0.0000	4.6172	pCi/L
River Water	172	11/24/2025	Cs-137	0.0000	0.0000	4.2836	pCi/L
River Water	172	11/24/2025	Fe-59	0.0000	0.0000	8.6202	pCi/L
River Water	172	11/24/2025	I-131	0.0000	0.0000	5.0951	pCi/L
River Water	172	11/24/2025	La-140	0.0000	0.0000	6.5687	pCi/L
River Water	172	11/24/2025	Mn-54	0.0000	0.0000	3.3660	pCi/L
River Water	172	11/24/2025	Nb-95	0.0000	0.0000	4.5813	pCi/L
River Water	172	11/24/2025	Zn-65	0.0000	0.0000	9.0781	pCi/L
River Water	172	11/24/2025	Zr-95	0.0000	0.0000	7.4392	pCi/L
River Water	170	11/24/2025	Ba-140	0.0000	0.0000	18.3690	pCi/L
River Water	170	11/24/2025	Be-7	0.0000	0.0000	44.0960	pCi/L
River Water	170	11/24/2025	Co-58	0.0000	0.0000	4.4701	pCi/L
River Water	170	11/24/2025	Co-60	0.0000	0.0000	4.9731	pCi/L
River Water	170	11/24/2025	Cs-134	0.0000	0.0000	4.2012	pCi/L

Annual Radiological Environmental Operating Report		YEAR: 2025	Page 67 of 79
Company: Southern Nuclear		Plant: Hatch Nuclear Plant	

Attachment 2, Complete Data Table for All Analysis Results Obtained In 2025

Sample Type	Location	Date	Nuclide	Activity	95% CL	MDA	Units
River Water	170	11/24/2025	Cs-137	0.0000	0.0000	5.9580	pCi/L
River Water	170	11/24/2025	Fe-59	0.0000	0.0000	11.5620	pCi/L
River Water	170	11/24/2025	I-131	0.0000	0.0000	5.0811	pCi/L
River Water	170	11/24/2025	La-140	0.0000	0.0000	9.2246	pCi/L
River Water	170	11/24/2025	Mn-54	0.0000	0.0000	4.9757	pCi/L
River Water	170	11/24/2025	Nb-95	0.0000	0.0000	5.4979	pCi/L
River Water	170	11/24/2025	Zn-65	0.0000	0.0000	12.9090	pCi/L
River Water	170	11/24/2025	Zr-95	0.0000	0.0000	8.7057	pCi/L
River Water	172	12/22/2025	Ba-140	0.0000	0.0000	14.9730	pCi/L
River Water	172	12/22/2025	Be-7	0.0000	0.0000	23.4870	pCi/L
River Water	172	12/22/2025	Co-58	0.0000	0.0000	3.6659	pCi/L
River Water	172	12/22/2025	Co-60	0.0000	0.0000	3.2986	pCi/L
River Water	172	12/22/2025	Cs-134	0.0000	0.0000	2.9273	pCi/L
River Water	172	12/22/2025	Cs-137	0.0000	0.0000	2.7671	pCi/L
River Water	172	12/22/2025	Fe-59	0.0000	0.0000	7.3279	pCi/L
River Water	172	12/22/2025	I-131	0.0000	0.0000	4.7879	pCi/L
River Water	172	12/22/2025	La-140	0.0000	0.0000	6.6243	pCi/L
River Water	172	12/22/2025	Mn-54	0.0000	0.0000	3.4189	pCi/L
River Water	172	12/22/2025	Nb-95	0.0000	0.0000	3.0539	pCi/L
River Water	172	12/22/2025	Zn-65	0.0000	0.0000	5.8049	pCi/L
River Water	172	12/22/2025	Zr-95	0.0000	0.0000	5.1683	pCi/L
River Water	170	12/22/2025	Ba-140	0.0000	0.0000	11.9880	pCi/L
River Water	170	12/22/2025	Be-7	0.0000	0.0000	22.1890	pCi/L
River Water	170	12/22/2025	Co-58	0.0000	0.0000	2.4123	pCi/L
River Water	170	12/22/2025	Co-60	0.0000	0.0000	2.7757	pCi/L
River Water	170	12/22/2025	Cs-134	0.0000	0.0000	2.5121	pCi/L
River Water	170	12/22/2025	Cs-137	0.0000	0.0000	2.5120	pCi/L
River Water	170	12/22/2025	Fe-59	0.0000	0.0000	4.8945	pCi/L
River Water	170	12/22/2025	I-131	0.0000	0.0000	4.4765	pCi/L

Annual Radiological Environmental Operating Report		YEAR: 2025	Page 68 of 79
Company: Southern Nuclear		Plant: Hatch Nuclear Plant	

Attachment 2, Complete Data Table for All Analysis Results Obtained In 2025

Sample Type	Location	Date	Nuclide	Activity	95% CL	MDA	Units
River Water	170	12/22/2025	La-140	0.0000	0.0000	4.2137	pCi/L
River Water	170	12/22/2025	Mn-54	0.0000	0.0000	3.0607	pCi/L
River Water	170	12/22/2025	Nb-95	0.0000	0.0000	2.6636	pCi/L
River Water	170	12/22/2025	Zn-65	0.0000	0.0000	5.8674	pCi/L
River Water	170	12/22/2025	Zr-95	0.0000	0.0000	4.1230	pCi/L
Sediment	170	4/29/2025	Be-7	244.1800	80.8060	0.0000	pCi/Kg
Sediment	170	4/29/2025	Co-58	0.0000	0.0000	7.0573	pCi/Kg
Sediment	170	4/29/2025	Co-60	0.0000	0.0000	8.3428	pCi/Kg
Sediment	170	4/29/2025	Cs-134	0.0000	0.0000	11.2160	pCi/Kg
Sediment	170	4/29/2025	Cs-137	0.0000	0.0000	13.3320	pCi/Kg
Sediment	172	4/29/2025	Be-7	200.7000	61.1710	0.0000	pCi/Kg
Sediment	172	4/29/2025	Co-58	0.0000	0.0000	4.9277	pCi/Kg
Sediment	172	4/29/2025	Co-60	0.0000	0.0000	6.4278	pCi/Kg
Sediment	172	4/29/2025	Cs-134	0.0000	0.0000	5.7367	pCi/Kg
Sediment	172	4/29/2025	Cs-137	0.0000	0.0000	7.0823	pCi/Kg
Sediment	172	9/16/2025	Be-7	0.0000	0.0000	88.0340	pCi/Kg
Sediment	172	9/16/2025	Co-58	0.0000	0.0000	16.0760	pCi/Kg
Sediment	172	9/16/2025	Co-60	0.0000	0.0000	10.5740	pCi/Kg
Sediment	172	9/16/2025	Cs-134	0.0000	0.0000	16.5740	pCi/Kg
Sediment	172	9/16/2025	Cs-137	0.0000	0.0000	17.8080	pCi/Kg
Sediment	170	9/16/2025	Be-7	0.0000	0.0000	80.7000	pCi/Kg
Sediment	170	9/16/2025	Co-58	0.0000	0.0000	14.4090	pCi/Kg
Sediment	170	9/16/2025	Co-60	0.0000	0.0000	15.3080	pCi/Kg
Sediment	170	9/16/2025	Cs-134	0.0000	0.0000	12.8410	pCi/Kg
Sediment	170	9/16/2025	Cs-137	0.0000	0.0000	11.1250	pCi/Kg
Vegetation	112	1/27/2025	Be-7	1552.5840	162.6170	0.0000	pCi/Kg
Vegetation	112	1/27/2025	Cs-134	0.0000	0.0000	7.9220	pCi/Kg
Vegetation	112	1/27/2025	Cs-137	0.0000	0.0000	8.4230	pCi/Kg
Vegetation	112	1/27/2025	I-131	0.0000	0.0000	22.9760	pCi/Kg

Annual Radiological Environmental Operating Report		YEAR: 2025	Page 69 of 79
Company: Southern Nuclear		Plant: Hatch Nuclear Plant	

Attachment 2, Complete Data Table for All Analysis Results Obtained In 2025

Sample Type	Location	Date	Nuclide	Activity	95% CL	MDA	Units
Vegetation	106	1/27/2025	Be-7	3162.2000	243.4000	0.0000	pCi/Kg
Vegetation	106	1/27/2025	Cs-134	0.0000	0.0000	6.6740	pCi/Kg
Vegetation	106	1/27/2025	Cs-137	0.0000	0.0000	6.7780	pCi/Kg
Vegetation	106	1/27/2025	I-131	0.0000	0.0000	8.8453	pCi/Kg
Vegetation	416	1/27/2025	Be-7	5521.2000	405.6800	0.0000	pCi/Kg
Vegetation	416	1/27/2025	Cs-134	0.0000	0.0000	8.6828	pCi/Kg
Vegetation	416	1/27/2025	Cs-137	0.0000	0.0000	8.6897	pCi/Kg
Vegetation	416	1/27/2025	I-131	0.0000	0.0000	17.3580	pCi/Kg
Vegetation	112	2/24/2025	Be-7	2299.7000	222.6300	0.0000	pCi/Kg
Vegetation	112	2/24/2025	Cs-134	0.0000	0.0000	10.0920	pCi/Kg
Vegetation	112	2/24/2025	Cs-137	0.0000	0.0000	9.9401	pCi/Kg
Vegetation	112	2/24/2025	I-131	0.0000	0.0000	11.9230	pCi/Kg
Vegetation	106	2/24/2025	Be-7	11541.0000	789.1900	0.0000	pCi/Kg
Vegetation	106	2/24/2025	Cs-134	0.0000	0.0000	12.6360	pCi/Kg
Vegetation	106	2/24/2025	Cs-137	30.1300	15.8120	0.0000	pCi/Kg
Vegetation	106	2/24/2025	I-131	0.0000	0.0000	16.3260	pCi/Kg
Vegetation	416	2/24/2025	Be-7	4604.6000	414.1000	0.0000	pCi/Kg
Vegetation	416	2/24/2025	Cs-134	0.0000	0.0000	10.3290	pCi/Kg
Vegetation	416	2/24/2025	Cs-137	0.0000	0.0000	11.5150	pCi/Kg
Vegetation	416	2/24/2025	I-131	0.0000	0.0000	14.2930	pCi/Kg
Vegetation	112	3/24/2025	Be-7	1078.8000	111.6000	0.0000	pCi/Kg
Vegetation	112	3/24/2025	Cs-134	0.0000	0.0000	6.0730	pCi/Kg
Vegetation	112	3/24/2025	Cs-137	0.0000	0.0000	6.1463	pCi/Kg
Vegetation	112	3/24/2025	I-131	0.0000	0.0000	6.8492	pCi/Kg
Vegetation	106	3/24/2025	Be-7	4292.7000	315.5900	0.0000	pCi/Kg
Vegetation	106	3/24/2025	Cs-134	0.0000	0.0000	7.9229	pCi/Kg
Vegetation	106	3/24/2025	Cs-137	18.6140	10.3190	0.0000	pCi/Kg
Vegetation	106	3/24/2025	I-131	0.0000	0.0000	9.5246	pCi/Kg
Vegetation	416	3/24/2025	Be-7	2586.0000	238.9600	0.0000	pCi/Kg

Annual Radiological Environmental Operating Report		YEAR: 2025	Page 70 of 79
Company: Southern Nuclear		Plant: Hatch Nuclear Plant	

Attachment 2, Complete Data Table for All Analysis Results Obtained In 2025

Sample Type	Location	Date	Nuclide	Activity	95% CL	MDA	Units
Vegetation	416	3/24/2025	Cs-134	0.0000	0.0000	6.8118	pCi/Kg
Vegetation	416	3/24/2025	Cs-137	0.0000	0.0000	7.3301	pCi/Kg
Vegetation	416	3/24/2025	I-131	0.0000	0.0000	8.2233	pCi/Kg
Vegetation	416	4/29/2025	Be-7	2793.6000	264.3900	0.0000	pCi/Kg
Vegetation	416	4/29/2025	Cs-134	0.0000	0.0000	8.1283	pCi/Kg
Vegetation	416	4/29/2025	Cs-137	0.0000	0.0000	8.8574	pCi/Kg
Vegetation	416	4/29/2025	I-131	0.0000	0.0000	9.3660	pCi/Kg
Vegetation	112	4/29/2025	Be-7	321.1700	28.8790	0.0000	pCi/Kg
Vegetation	112	4/29/2025	Cs-134	0.0000	0.0000	1.1790	pCi/Kg
Vegetation	112	4/29/2025	Cs-137	0.0000	0.0000	1.1470	pCi/Kg
Vegetation	112	4/29/2025	I-131	0.0000	0.0000	1.8120	pCi/Kg
Vegetation	106	4/29/2025	Be-7	2599.5000	218.9300	0.0000	pCi/Kg
Vegetation	106	4/29/2025	Cs-134	0.0000	0.0000	7.8477	pCi/Kg
Vegetation	106	4/29/2025	Cs-137	20.7590	10.6370	0.0000	pCi/Kg
Vegetation	106	4/29/2025	I-131	0.0000	0.0000	8.5687	pCi/Kg
Vegetation	106	5/27/2025	Be-7	971.2140	126.0740	0.0000	pCi/Kg
Vegetation	106	5/27/2025	Cs-134	0.0000	0.0000	6.5760	pCi/Kg
Vegetation	106	5/27/2025	Cs-137	0.0000	0.0000	6.4420	pCi/Kg
Vegetation	106	5/27/2025	I-131	0.0000	0.0000	20.4790	pCi/Kg
Vegetation	112	5/27/2025	Be-7	1587.2000	155.7300	0.0000	pCi/Kg
Vegetation	112	5/27/2025	Cs-134	0.0000	0.0000	7.5518	pCi/Kg
Vegetation	112	5/27/2025	Cs-137	0.0000	0.0000	7.4267	pCi/Kg
Vegetation	112	5/27/2025	I-131	0.0000	0.0000	7.8875	pCi/Kg
Vegetation	416	5/27/2025	Be-7	1915.2220	194.5570	0.0000	pCi/Kg
Vegetation	416	5/27/2025	Cs-134	0.0000	0.0000	7.2730	pCi/Kg
Vegetation	416	5/27/2025	Cs-137	0.0000	0.0000	7.4551	pCi/Kg
Vegetation	416	5/27/2025	I-131	0.0000	0.0000	8.1840	pCi/Kg
Vegetation	416	6/29/2025	Be-7	1520.4200	148.4010	0.0000	pCi/Kg
Vegetation	416	6/29/2025	Cs-134	0.0000	0.0000	6.0200	pCi/Kg

Annual Radiological Environmental Operating Report		YEAR: 2025	Page 71 of 79
Company: Southern Nuclear		Plant: Hatch Nuclear Plant	

Attachment 2, Complete Data Table for All Analysis Results Obtained In 2025

Sample Type	Location	Date	Nuclide	Activity	95% CL	MDA	Units
Vegetation	416	6/29/2025	Cs-137	0.0000	0.0000	6.6990	pCi/Kg
Vegetation	416	6/29/2025	I-131	0.0000	0.0000	7.4630	pCi/Kg
Vegetation	112	6/30/2025	Be-7	1067.1000	115.7500	0.0000	pCi/Kg
Vegetation	112	6/30/2025	Cs-134	0.0000	0.0000	6.2219	pCi/Kg
Vegetation	112	6/30/2025	Cs-137	0.0000	0.0000	6.5785	pCi/Kg
Vegetation	112	6/30/2025	I-131	0.0000	0.0000	6.5882	pCi/Kg
Vegetation	106	6/30/2025	Be-7	1765.4000	163.4200	0.0000	pCi/Kg
Vegetation	106	6/30/2025	Cs-134	0.0000	0.0000	7.5971	pCi/Kg
Vegetation	106	6/30/2025	Cs-137	27.1410	8.9862	0.0000	pCi/Kg
Vegetation	106	6/30/2025	I-131	0.0000	0.0000	7.6500	pCi/Kg
Vegetation	106	7/28/2025	Be-7	2913.4000	242.8100	0.0000	pCi/Kg
Vegetation	106	7/28/2025	Cs-134	0.0000	0.0000	8.7472	pCi/Kg
Vegetation	106	7/28/2025	Cs-137	38.3800	12.7800	0.0000	pCi/Kg
Vegetation	106	7/28/2025	I-131	0.0000	0.0000	9.4249	pCi/Kg
Vegetation	112	7/28/2025	Be-7	1911.9000	181.6600	0.0000	pCi/Kg
Vegetation	112	7/28/2025	Cs-134	0.0000	0.0000	8.4079	pCi/Kg
Vegetation	112	7/28/2025	Cs-137	0.0000	0.0000	8.8232	pCi/Kg
Vegetation	112	7/28/2025	I-131	0.0000	0.0000	9.2856	pCi/Kg
Vegetation	416	7/28/2025	Be-7	2994.7000	281.9400	0.0000	pCi/Kg
Vegetation	416	7/28/2025	Cs-134	0.0000	0.0000	12.1970	pCi/Kg
Vegetation	416	7/28/2025	Cs-137	0.0000	0.0000	13.6930	pCi/Kg
Vegetation	416	7/28/2025	I-131	0.0000	0.0000	13.4330	pCi/Kg
Vegetation	112	8/25/2025	Be-7	2867.7000	283.2200	0.0000	pCi/Kg
Vegetation	112	8/25/2025	Cs-134	0.0000	0.0000	9.1888	pCi/Kg
Vegetation	112	8/25/2025	Cs-137	0.0000	0.0000	9.7477	pCi/Kg
Vegetation	112	8/25/2025	I-131	0.0000	0.0000	19.2180	pCi/Kg
Vegetation	416	8/25/2025	Be-7	2317.6000	232.4400	0.0000	pCi/Kg
Vegetation	416	8/25/2025	Cs-134	0.0000	0.0000	8.0643	pCi/Kg
Vegetation	416	8/25/2025	Cs-137	0.0000	0.0000	8.2996	pCi/Kg

Attachment 2, Complete Data Table for All Analysis Results Obtained In 2025

Sample Type	Location	Date	Nuclide	Activity	95% CL	MDA	Units
Vegetation	416	8/25/2025	I-131	0.0000	0.0000	16.1100	pCi/Kg
Vegetation	106	8/25/2025	Be-7	3734.5000	314.1100	0.0000	pCi/Kg
Vegetation	106	8/25/2025	Cs-134	0.0000	0.0000	10.0100	pCi/Kg
Vegetation	106	8/25/2025	Cs-137	31.7340	12.8390	0.0000	pCi/Kg
Vegetation	106	8/25/2025	I-131	0.0000	0.0000	19.8770	pCi/Kg
Vegetation	106	9/29/2025	Be-7	2982.1000	271.1400	0.0000	pCi/Kg
Vegetation	106	9/29/2025	Cs-134	0.0000	0.0000	10.8690	pCi/Kg
Vegetation	106	9/29/2025	Cs-137	39.5840	18.0480	0.0000	pCi/Kg
Vegetation	106	9/29/2025	I-131	0.0000	0.0000	12.3310	pCi/Kg
Vegetation	112	9/29/2025	Be-7	3123.0000	342.2500	0.0000	pCi/Kg
Vegetation	112	9/29/2025	Cs-134	0.0000	0.0000	17.0080	pCi/Kg
Vegetation	112	9/29/2025	Cs-137	0.0000	0.0000	19.3160	pCi/Kg
Vegetation	112	9/29/2025	I-131	0.0000	0.0000	21.4240	pCi/Kg
Vegetation	416	9/29/2025	Be-7	2330.0000	225.3600	0.0000	pCi/Kg
Vegetation	416	9/29/2025	Cs-134	0.0000	0.0000	9.8356	pCi/Kg
Vegetation	416	9/29/2025	Cs-137	0.0000	0.0000	10.5440	pCi/Kg
Vegetation	416	9/29/2025	I-131	0.0000	0.0000	13.0170	pCi/Kg
Vegetation	416	10/27/2025	Be-7	1327.7000	116.8200	0.0000	pCi/Kg
Vegetation	416	10/27/2025	Cs-134	0.0000	0.0000	4.7705	pCi/Kg
Vegetation	416	10/27/2025	Cs-137	0.0000	0.0000	5.3247	pCi/Kg
Vegetation	416	10/27/2025	I-131	0.0000	0.0000	8.3621	pCi/Kg
Vegetation	112	10/27/2025	Be-7	2065.8000	178.2500	0.0000	pCi/Kg
Vegetation	112	10/27/2025	Cs-134	0.0000	0.0000	5.6743	pCi/Kg
Vegetation	112	10/27/2025	Cs-137	0.0000	0.0000	6.5017	pCi/Kg
Vegetation	112	10/27/2025	I-131	0.0000	0.0000	10.6330	pCi/Kg
Vegetation	106	10/27/2025	Be-7	2663.1000	255.4100	0.0000	pCi/Kg
Vegetation	106	10/27/2025	Cs-134	0.0000	0.0000	7.7132	pCi/Kg
Vegetation	106	10/27/2025	Cs-137	19.8770	10.0140	0.0000	pCi/Kg
Vegetation	106	10/27/2025	I-131	0.0000	0.0000	13.6210	pCi/Kg

Annual Radiological Environmental Operating Report		YEAR: 2025	Page 73 of 79
Company: Southern Nuclear		Plant: Hatch Nuclear Plant	

Attachment 2, Complete Data Table for All Analysis Results Obtained In 2025

Sample Type	Location	Date	Nuclide	Activity	95% CL	MDA	Units
Vegetation	416	11/24/2025	Be-7	3413.4000	286.5100	0.0000	pCi/Kg
Vegetation	416	11/24/2025	Cs-134	0.0000	0.0000	9.7784	pCi/Kg
Vegetation	416	11/24/2025	Cs-137	0.0000	0.0000	10.5380	pCi/Kg
Vegetation	416	11/24/2025	I-131	0.0000	0.0000	16.1770	pCi/Kg
Vegetation	112	11/24/2025	Be-7	2559.8000	235.4100	0.0000	pCi/Kg
Vegetation	112	11/24/2025	Cs-134	0.0000	0.0000	9.4598	pCi/Kg
Vegetation	112	11/24/2025	Cs-137	23.3230	12.7880	0.0000	pCi/Kg
Vegetation	112	11/24/2025	I-131	0.0000	0.0000	16.3250	pCi/Kg
Vegetation	106	11/24/2025	Be-7	4433.5000	353.0300	0.0000	pCi/Kg
Vegetation	106	11/24/2025	Cs-134	0.0000	0.0000	10.4940	pCi/Kg
Vegetation	106	11/24/2025	Cs-137	24.9710	12.6430	0.0000	pCi/Kg
Vegetation	106	11/24/2025	I-131	0.0000	0.0000	17.5190	pCi/Kg
Vegetation	416	12/29/2025	Be-7	6154.4000	452.9500	0.0000	pCi/Kg
Vegetation	416	12/29/2025	Cs-134	0.0000	0.0000	10.9790	pCi/Kg
Vegetation	416	12/29/2025	Cs-137	0.0000	0.0000	11.2090	pCi/Kg
Vegetation	416	12/29/2025	I-131	0.0000	0.0000	19.1320	pCi/Kg
Vegetation	112	12/29/2025	Be-7	2839.7000	226.2800	0.0000	pCi/Kg
Vegetation	112	12/29/2025	Cs-134	0.0000	0.0000	6.2922	pCi/Kg
Vegetation	112	12/29/2025	Cs-137	0.0000	0.0000	6.1195	pCi/Kg
Vegetation	112	12/29/2025	I-131	0.0000	0.0000	11.3530	pCi/Kg
Vegetation	106	12/29/2025	Be-7	3358.1000	295.1100	0.0000	pCi/Kg
Vegetation	106	12/29/2025	Cs-134	0.0000	0.0000	5.8953	pCi/Kg
Vegetation	106	12/29/2025	Cs-137	15.5340	7.8656	0.0000	pCi/Kg
Vegetation	106	12/29/2025	I-131	0.0000	0.0000	10.5090	pCi/Kg

Annual Radiological Environmental Operating Report	YEAR: 2025	Page 74 of 79
Company: Southern Nuclear	Plant: Hatch Nuclear Plant	

Attachment 3, Cross Check Intercomparison Program

Attachment 3, Cross Check Intercomparison Program

Participation in cross check intercomparison studies is mandatory for laboratories performing analyses of REMP samples satisfying the requirements in the Offsite Site Dose Calculation Manual. Intercomparison studies provide a consistent and effective means to evaluate the accuracy and precision of analyses performed by a laboratory. Study results should fall within specified control limits and results that fall outside the control limits are investigated and corrected.

Georgia Power Company Environmental Lab participated in the following proficiency testing studies provided by Eckert Ziegler Analytics, Inc. in 2025. The Laboratory's intercomparison program results for 2025 are summarized below.

Cross Check Intercomparison Results					
Radionuclide/Standard	Units	Reported Value	Assigned Value	Acceptance Limits	Performance Evaluation
Air Filter Mixed Gamma					
Ce-141	pCi	72.2	67.8	0.80-1.25	1.07
Co-58	pCi	87.2	79.5	0.80-1.25	1.10
Co-60	pCi	115	114	0.80-1.25	1.01
Cr-51	pCi	208	196	0.80-1.25	1.06
Cs-134	pCi	107	107	0.80-1.25	1.00
Cs-137	pCi	100	95.6	0.80-1.25	1.05
Fe-59	pCi	78.5	74.7	0.80-1.25	1.05
Mn-54	pCi	138	122	0.80-1.25	1.13
Zn-65	pCi	175	148	0.80-1.25	1.18
Air Filter Gross Alpha/Beta					
Gross Alpha	pCi	210	201	0.80-1.25	1.05
Gross Beta	pCi	74.5	79.2	0.80-1.25	0.94
Water Mixed Gamma					
Ce-141	pCi/L	137	138	0.80-1.25	0.99
Co-58	pCi/L	164	160	0.80-1.25	1.02
Co-60	pCi/L	212	211	0.80-1.25	1.00
Cr-51	pCi/L	298	283	0.80-1.25	1.05
Cs-134	pCi/L	195	204	0.80-1.25	0.95
Cs-137	pCi/L	151	149	0.80-1.25	1.01
Fe-59	pCi/L	136	135	0.80-1.25	1.01
I-131	pCi/L	63.8	62.5	0.80-1.25	1.02
Mn-54	pCi/L	159	150	0.80-1.25	1.06
Zn-65	pCi/L	287	282	0.80-1.25	1.02

Attachment 3, Cross Check Intercomparison Program

Cross Check Intercomparison Results					
Radionuclide/Standard	Units	Reported Value	Assigned Value	Acceptance Limits	Performance Evaluation
Water Gross Alpha/Beta					
Gross Alpha	pCi/L	116	112	0.80-1.25	1.04
Gross Beta	pCi/L	335	292	0.80-1.25	1.15
Water Tritium					
H-3	pCi/L	9920	10200	0.80-1.25	0.97
Charcoal					
I-131	pCi	67.3	65.9	0.80-1.25	1.02
Milk Mixed Gamma					
Ce-141	pCi/L	101	89.5	0.80-1.25	1.13
Co-58	pCi/L	114	105	0.80-1.25	1.09
Co-60	pCi/L	159	150	0.80-1.25	1.06
Cr-51	pCi/L	266	260	0.80-1.25	1.02
Cs-134	pCi/L	142	142	0.80-1.25	1.00
Cs-137	pCi/L	130	126	0.80-1.25	1.03
Fe-59	pCi/L	103	98.6	0.80-1.25	1.04
I-131	pCi/L	84.3	76.3	0.80-1.25	1.10
Mn-54	pCi/L	179	161	0.80-1.25	1.11
Zn-65	pCi/L	222	196	0.80-1.25	1.14
Vegetation Mixed Gamma					
Ce-141	pCi/g	0.174	0.158	0.80-1.25	1.10
Co-58	pCi/g	0.193	0.186	0.80-1.25	1.04
Co-60	pCi/g	0.268	0.266	0.80-1.25	1.01
Cr-51	pCi/g	0.437	0.459	0.80-1.25	0.95
Cs-134	pCi/g	0.243	0.251	0.80-1.25	0.97
Cs-137	pCi/g	0.227	0.223	0.80-1.25	1.02
Fe-59	pCi/g	0.174	0.175	0.80-1.25	1.00
Mn-54	pCi/g	0.305	0.285	0.80-1.25	1.07
Zn-65	pCi/g	0.397	0.346	0.80-1.25	1.15

Annual Radiological Environmental Operating Report	YEAR: 2025	Page 77 of 79
Company: Southern Nuclear	Plant:	Hatch Nuclear Plant

Attachment 4, Environmental Direct Radiation Dosimetry Sample Results

Attachment 4, Environmental Direct Radiation Dosimetry Sample Results

Monitoring Location	Quarterly Baseline, B _Q (mrem)	B _Q + MDD _Q	Normalized Quarterly Monitoring Data, M _Q (mrem)				Quarterly Facility Dose, F _Q =M _Q -B _Q (mrem)				Annual Baseline, B _A (mrem)	B _A + MDD _A	Annual Monitoring Data, M _A (mrem)	Annual Facility Dose, F _A =M _A -B _A (mrem)
			1	2	3	4	1	2	3	4				
H064	14.7	19.7	11.9	13.3	13.4	14.7	ND	ND	ND	ND	59.0	69.4	53.4	ND
H101	14.8	19.8	11.5	12.2	12.4	13.1	ND	ND	ND	ND	59.1	69.5	49.2	ND
H102	15	20.0	12.7	13.8	13.8	13.6	ND	ND	ND	ND	59.9	70.3	53.8	ND
H103	14.8	19.8	13.4	11.8	12.6	15.1	ND	ND	ND	ND	59.3	69.7	52.9	ND
H104	18.1	23.1	14.8	16.2	16.6	18.0	ND	ND	ND	ND	72.5	82.9	65.6	ND
H105	17.1	22.1	14.8	16.7	14.8	16.7	ND	ND	ND	ND	68.4	78.8	63.0	ND
H106	14.2	19.2	12.0	11.4	12.2	13.6	ND	ND	ND	ND	56.8	67.2	49.1	ND
H107	13.4	18.4	12.0	11.5	12.2	12.9	ND	ND	ND	ND	53.8	64.2	48.6	ND
H108	13.7	18.7	12.1	11.8	11.7	14.5	ND	ND	ND	ND	54.8	65.2	50.1	ND
H109	15.2	20.2	11.6	12.8	13.6	15.9	ND	ND	ND	ND	60.9	71.3	53.8	ND
H110	16.1	21.1	12.1	13.6	12.9	14.6	ND	ND	ND	ND	64.5	74.9	53.2	ND
H111	13.8	18.8	12.8	11.9	12.4	12.9	ND	ND	ND	ND	55.1	65.5	50.0	ND
H112	13.8	18.8	12.1	11.3	12.0	12.1	ND	ND	ND	ND	55.1	65.5	47.5	ND
H113	16.5	21.5	13.7	13.8	13.4	15.7	ND	ND	ND	ND	66.2	76.6	56.6	ND
H114	15.5	20.5	13.4				ND	ND	ND	ND	62.2	72.6	13.4	ND
H115	21.3	26.3	18.3	19.8	19.3	21.0	ND	ND	ND	ND	85.0	95.4	78.4	ND
H116	13.2	18.2	10.6	11.1	12.2	11.2	ND	ND	ND	ND	53.0	63.4	45.1	ND
H201	15.6	20.6	12.1	11.3	11.8	14.0	ND	ND	ND	ND	62.2	72.6	49.2	ND
H202	14.5	19.5	12.9	12.7	12.0	13.7	ND	ND	ND	ND	57.8	68.2	51.3	ND
H203	18.7	23.7	16.6	16.4	15.7	18.0	ND	ND	ND	ND	74.9	85.3	66.6	ND
H204	16.1	21.1	15.1	14.5	14.2	15.8	ND	ND	ND	ND	64.4	74.8	59.6	ND
H205	15.8	20.8	13.8	14.1	13.6	15.9	ND	ND	ND	ND	63.2	73.6	57.4	ND
H206	13.9	18.9	13.1	11.5	12.7	11.4	ND	ND	ND	ND	55.6	66.0	48.7	ND
H207	12.4	17.4	10.0	11.4	10.9	12.3	ND	ND	ND	ND	49.7	60.1	44.7	ND

Attachment 4, Environmental Direct Radiation Dosimetry Sample Results

Monitoring Location	Quarterly Baseline, B_Q (mrem)	$B_Q + MDD_Q$	Normalized Quarterly Monitoring Data, M_Q (mrem)				Quarterly Facility Dose, $F_Q = M_Q - B_Q$ (mrem)				Annual Baseline, B_A (mrem)	$B_A + MDD_A$	Annual Monitoring Data, M_A (mrem)	Annual Facility Dose, $F_A = M_A - B_A$ (mrem)
			1	2	3	4	1	2	3	4				
H208	13.4	18.4	11.0	11.9	11.2	12.8	ND	ND	ND	ND	54.0	64.4	46.8	ND
H209	13.4	18.4	11.2	10.6	11.3	12.4	ND	ND	ND	ND	53.8	64.2	45.4	ND
H210	12.6	17.6	9.7	8.8	10.3	11.2	ND	ND	ND	ND	50.5	60.9	40.1	ND
H211	14.4	19.4	11.4	12.3	11.7	12.9	ND	ND	ND	ND	57.7	68.1	48.2	ND
H212	14.3	19.3	11.0	12.9	12.4	13.5	ND	ND	ND	ND	57.3	67.7	49.8	ND
H213	14.9	19.9	12.3	12.5	13.1	13.7	ND	ND	ND	ND	59.6	70.0	51.6	ND
H214	19.4	24.4	15.8	16.5	15.1	16.5	ND	ND	ND	ND	77.4	87.8	63.9	ND
H215	18.6	23.6	15.8	16.4	16.6	17.2	ND	ND	ND	ND	74.5	84.9	66.0	ND
H216	14.9	19.9	14.2	14.1	13.1	14.2	ND	ND	ND	ND	59.7	70.1	55.6	ND
H301	14.9	19.9	13.2	12.2	12.6	13.8	ND	ND	ND	ND	59.5	69.9	51.8	ND
H304	15.3	20.3	13.1				ND	ND	ND	ND	61.4	71.8	13.1	ND
H309	14	19.0	12.6				ND	ND	ND	ND	55.8	66.2	12.6	ND
H416	15.9	20.9	5.4				ND	ND	ND	ND	63.8	74.2	5.4	ND

MDD_Q = Quarterly Minimum Differential Dose = 5 mrem

MDD_A = Annual Minimum Differential Dose = 10 mrem

ND = Not Detected, where $M_Q \leq (B_Q + MDD_Q)$ or $M_A \leq (B_A + MDD_A)$

Grayed out cells in the Normalized Quarterly Monitoring Data columns are due to OSLDs that were removed from the program in January 2025. For additional information, see Table 8 in Section 7.1.