

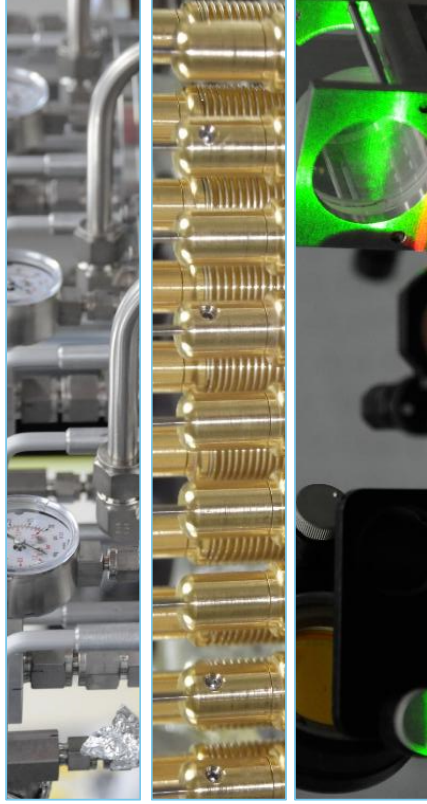


**Efficiency In Motion
Paducah Laser Enrichment Facility (PLEF)
License Application**

Tim Knowles
Licensing & Regulatory Affairs Manager

March 11, 2026

About us



Our Mission:

Deploy the world's first laser-based uranium enrichment facility in Paducah ...

- ... for reliable, carbon-free nuclear power
- ... for U.S. energy security and diversity of supply
- ... to restore U.S. leadership in advanced fuel cycle technologies
- ... to convert legacy DOE waste to clean energy



Ownership

GLE is jointly owned by Silex Systems Ltd. and Cameco Corporation



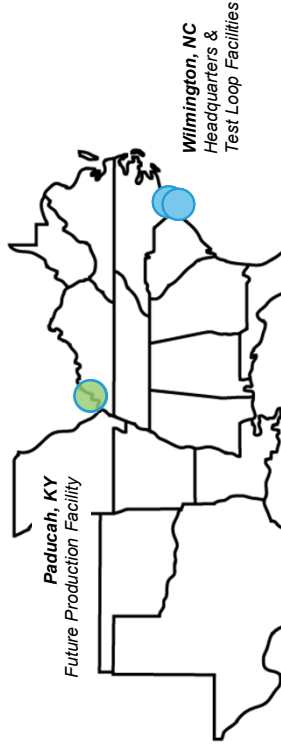
Inventor of the SILEX process



Cameco

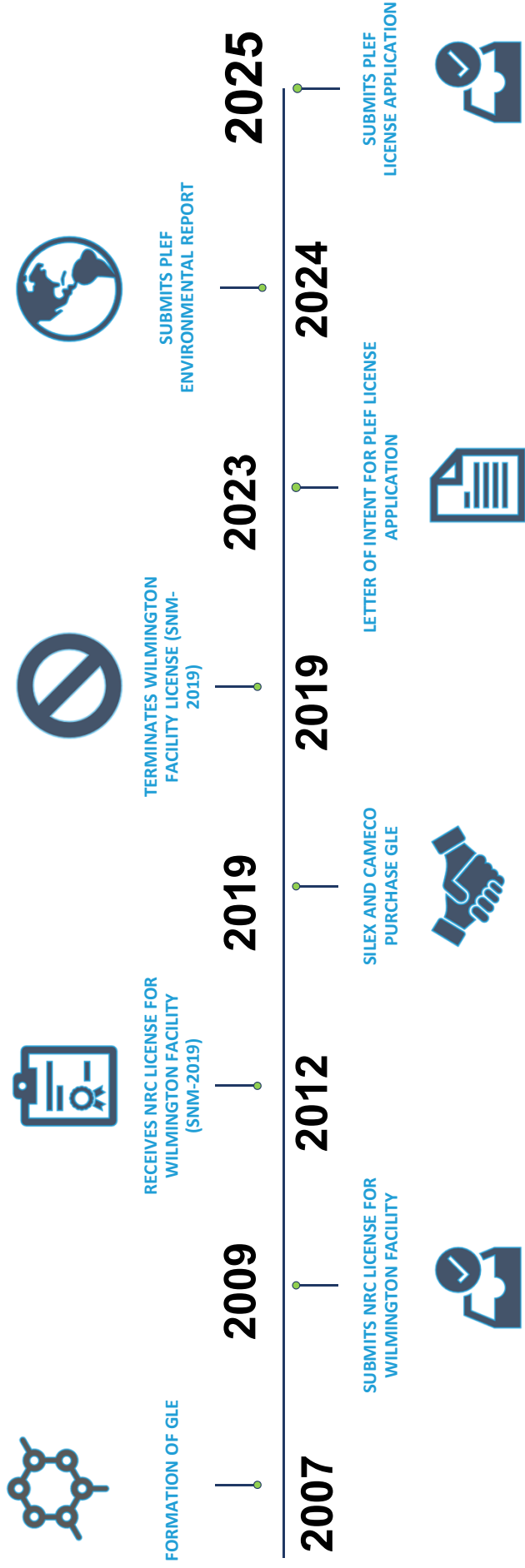
One of the world's largest integrated nuclear fuel suppliers

Locations

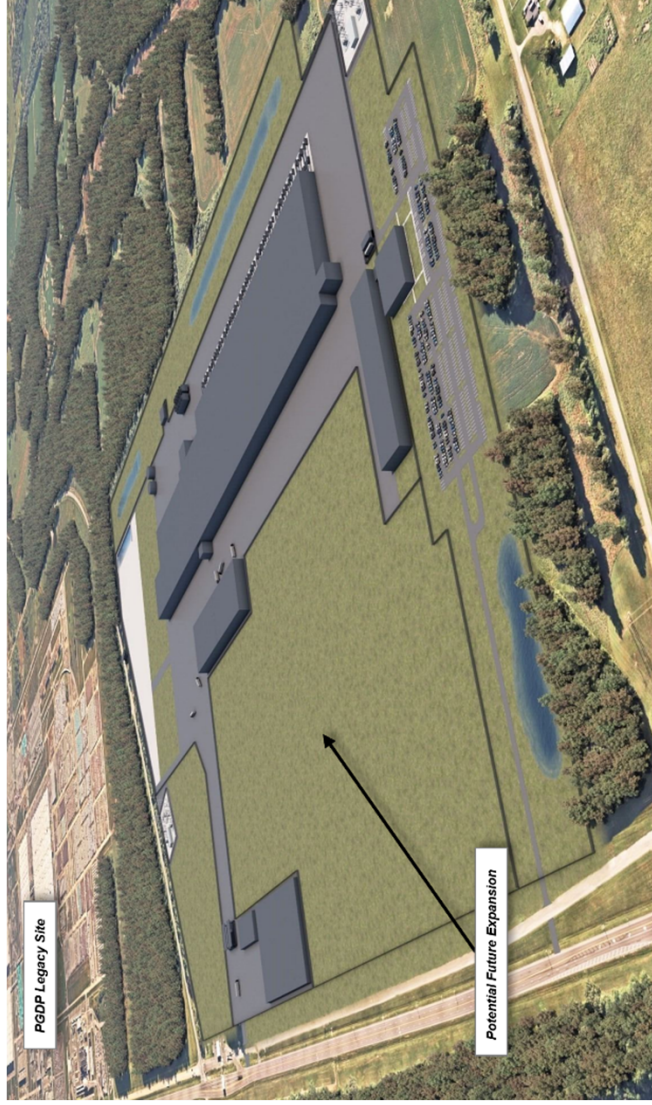


120+ employees ... 85,000+ sf of advanced manufacturing and operations footprint

Historical Context of GLE License Application



Environmental Report Activities

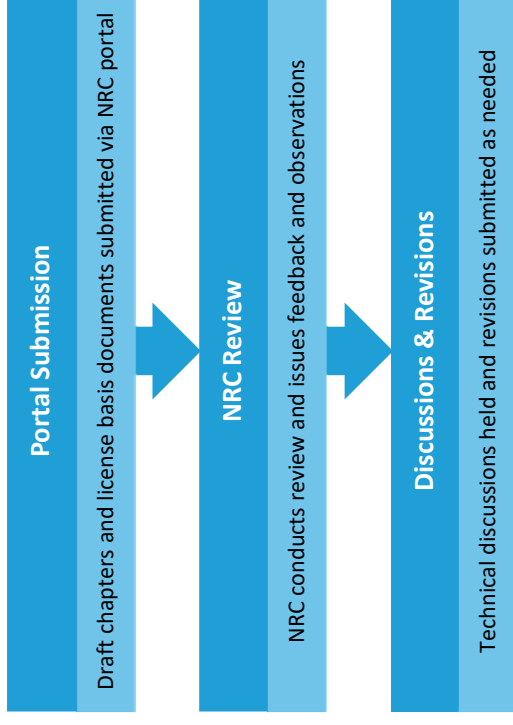


- **July 2024** GLE submits an exemption request to allow the Environmental Report required by Part 51 to be submitted separately from and before the license application
- The initiative for a bifurcated request:
 - allowed for the NRC to begin the review of the environmental report while the safety and safeguards portions of the license application preparation was completed,
 - did not endanger life or property or common defense & security, and
 - was in the public interest (national objectives, industry demand, and clean energy initiative).
- **Pre-application meetings, written observations and site visit conducted prior to formal submission**
- **December 2024** GLE submitted its Environmental Report
- **No** RAIs were issued for the ER
- Draft EIS is expected in **March 2026**

Pre-application Engagement

- SNM-2019 (terminated) served as the foundation and basis for license application development
- GLE engaged in multiple pre-application meetings with the NRC Technical Reviewers throughout the application development process
- An NRC portal was established to streamline the sharing of draft application documents
- GLE submitted the majority of its license application content through the online portal for NRC draft review
- NRC provided observations to draft documents and revisions made to reduce RSI/RAIs

Draft Submission & Review Process



Submission & Acceptance Review

- June 2025 GLE submits PLEF License Application
 - First enrichment facility license application in over a decade
- Received acceptance letter August 4, 2025
 - No Requests for Supplemental Information (RSI) were issued during acceptance review
- Established an **18-month review schedule** to be completed in **January 2027**
- Promptly received voluntary observations and responses were provided



Strengths & Recommendations

- **Strengths**
 - The review process has been streamlined
 - Portal establishment significantly improved draft review and license application development
 - Pre-submittal meetings, draft reviews, and observations have resulted in a reduction of RAIs
- **Recommendations**
 - More consistency in NRC staff and technical reviewers
 - Rulemaking changes under 10 CFR 70.22 requires consideration
 - Revisions to NUREG-1520 are needed as part of an NEI led initiative

