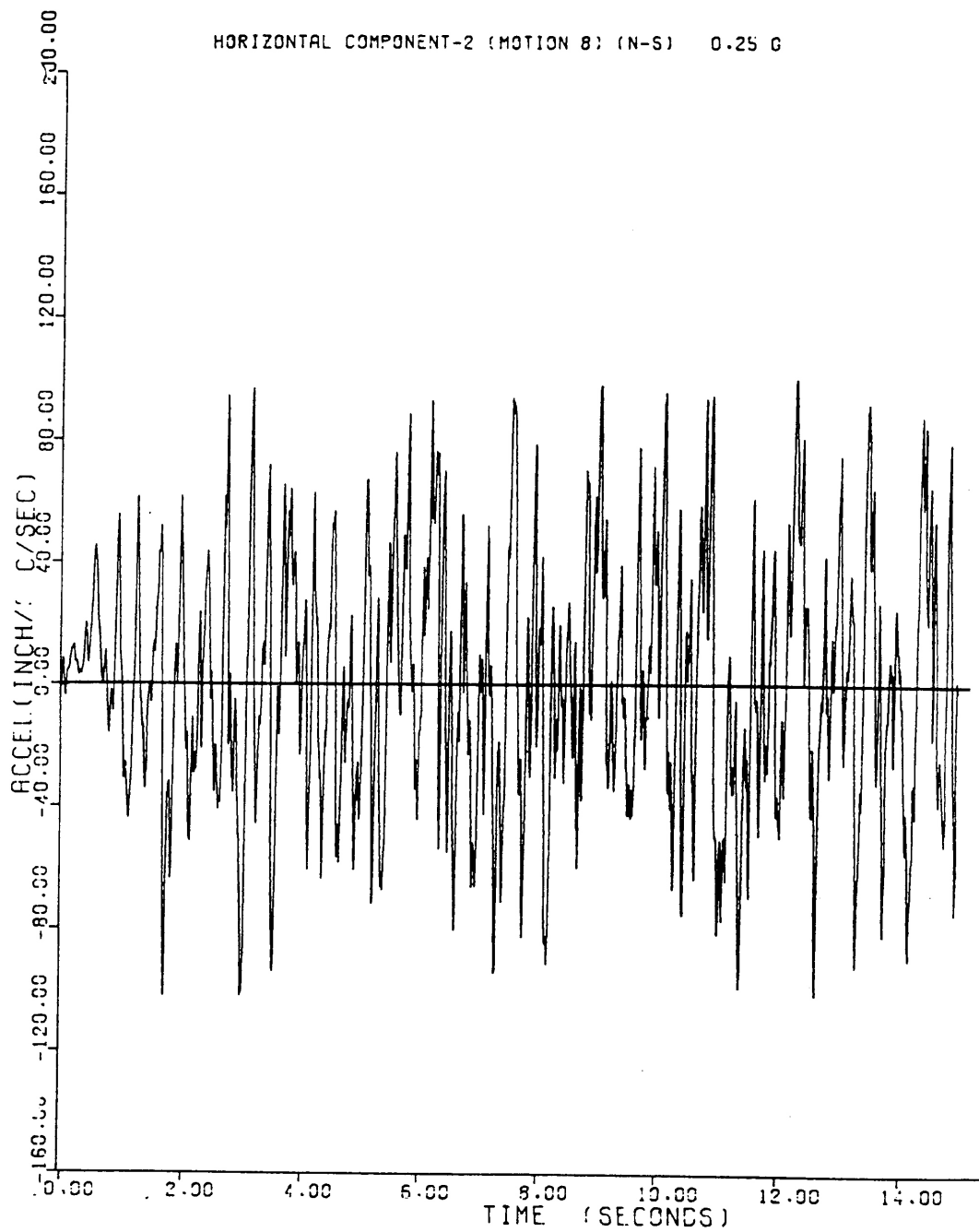


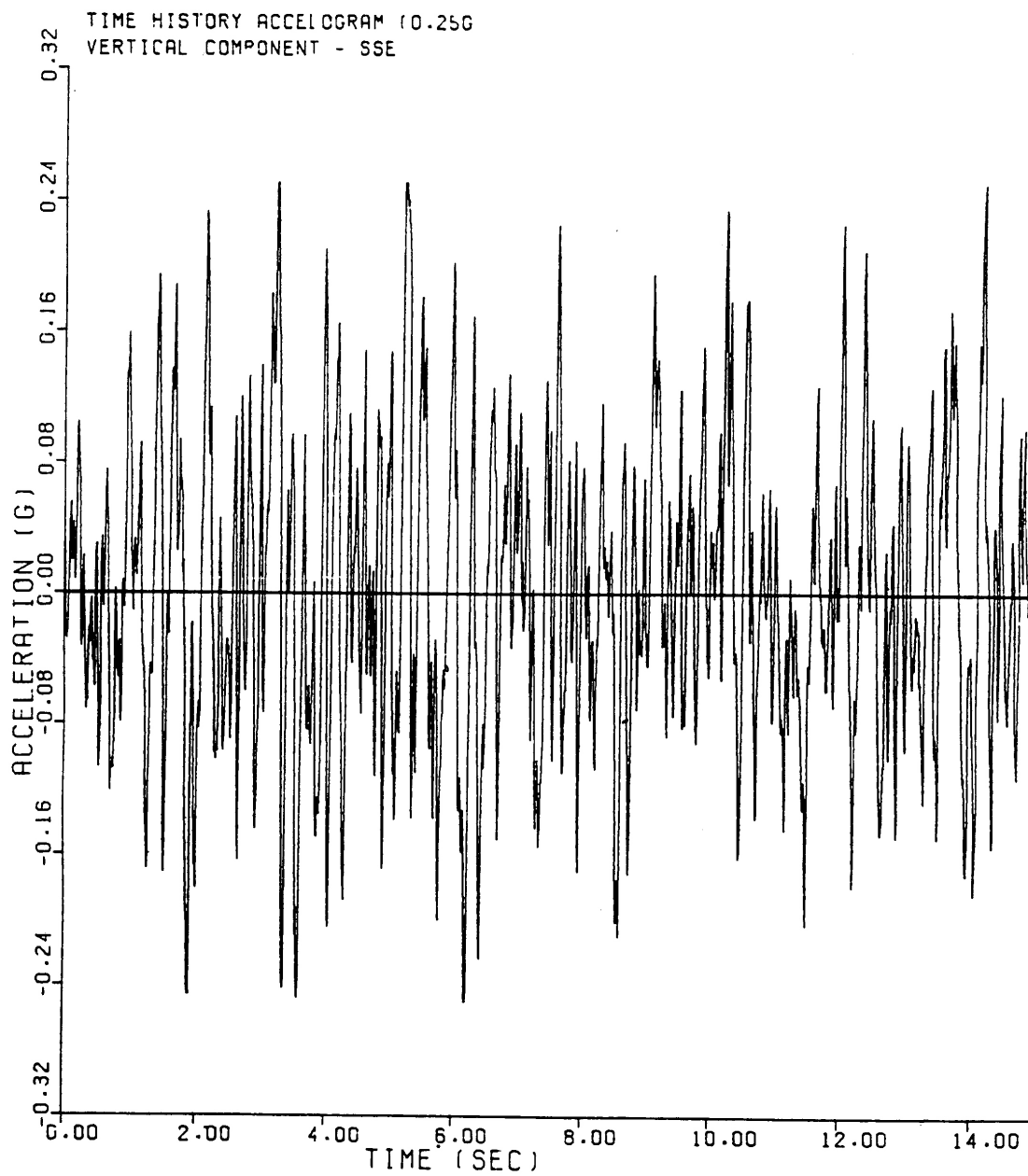
SEABROOK STATION
UPDATED FINAL SAFETY
ANALYSIS REPORT

Time History Accelogram (0.25g), Horizontal Component
1 - SSE

Figure 3.7(B)-1



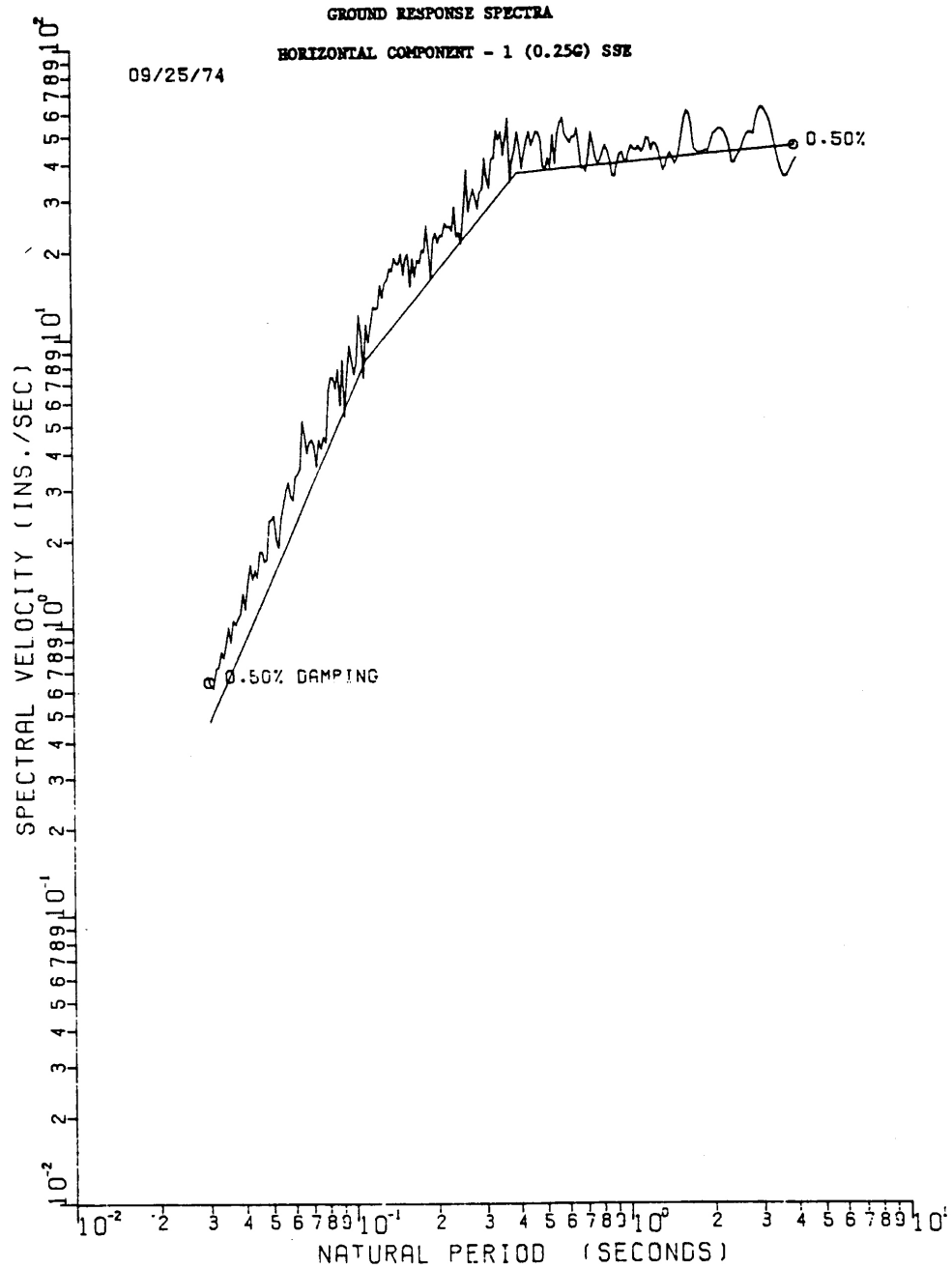
SEABROOK STATION UPDATED FINAL SAFETY ANALYSIS REPORT	Time History Accelogram (0.25g), Horizontal Component 2 - SSE	
		Figure 3.7(B)-2



SEABROOK STATION
UPDATED FINAL SAFETY
ANALYSIS REPORT

Time History Accelogram (0.25g), Vertical Component -
SSE

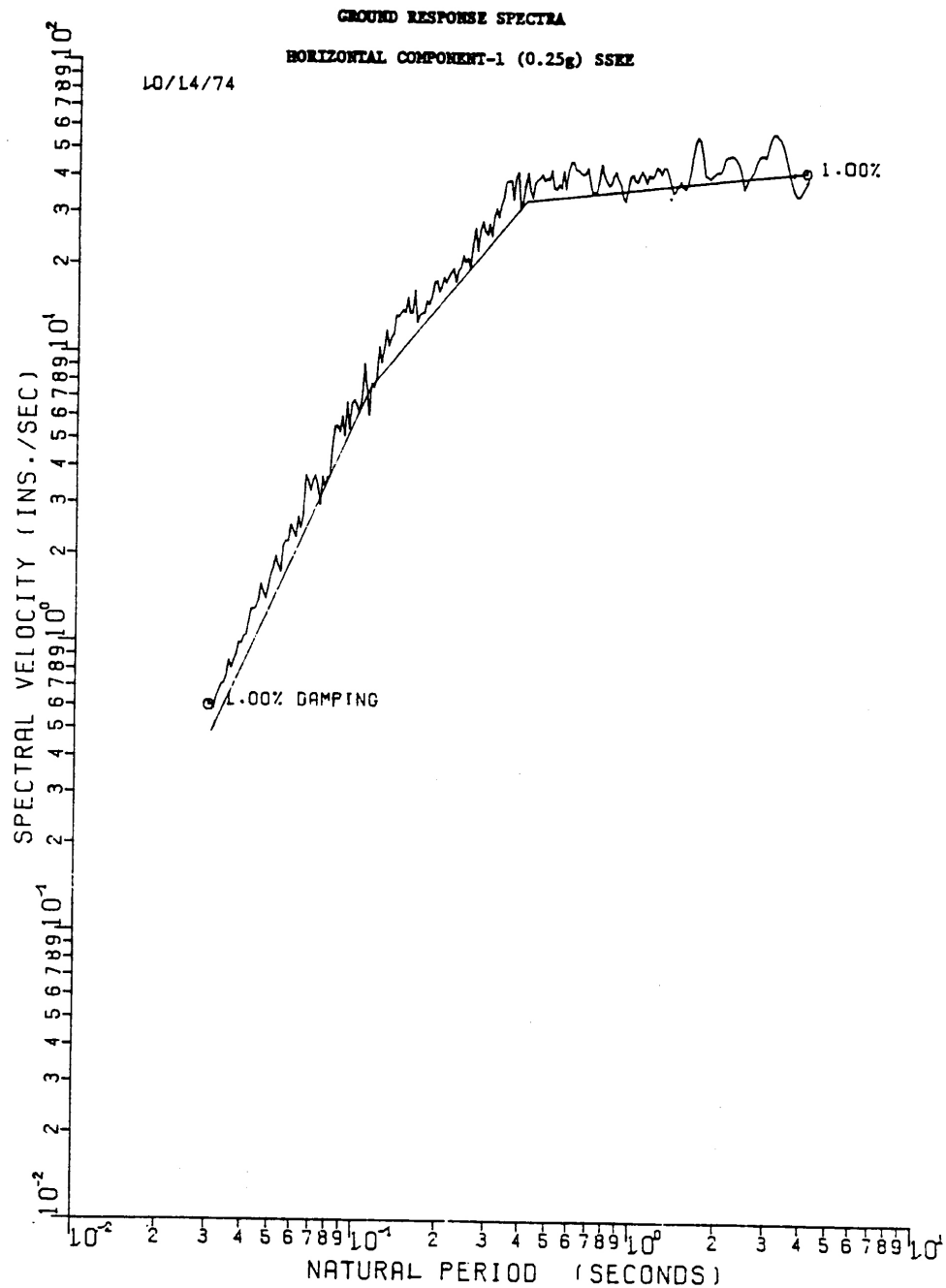
Figure 3.7(B)-3



SEABROOK STATION
UPDATED FINAL SAFETY
ANALYSIS REPORT

0.50% Critical Damping Ground Response Spectrum,
Horizontal Component 1 - SSE

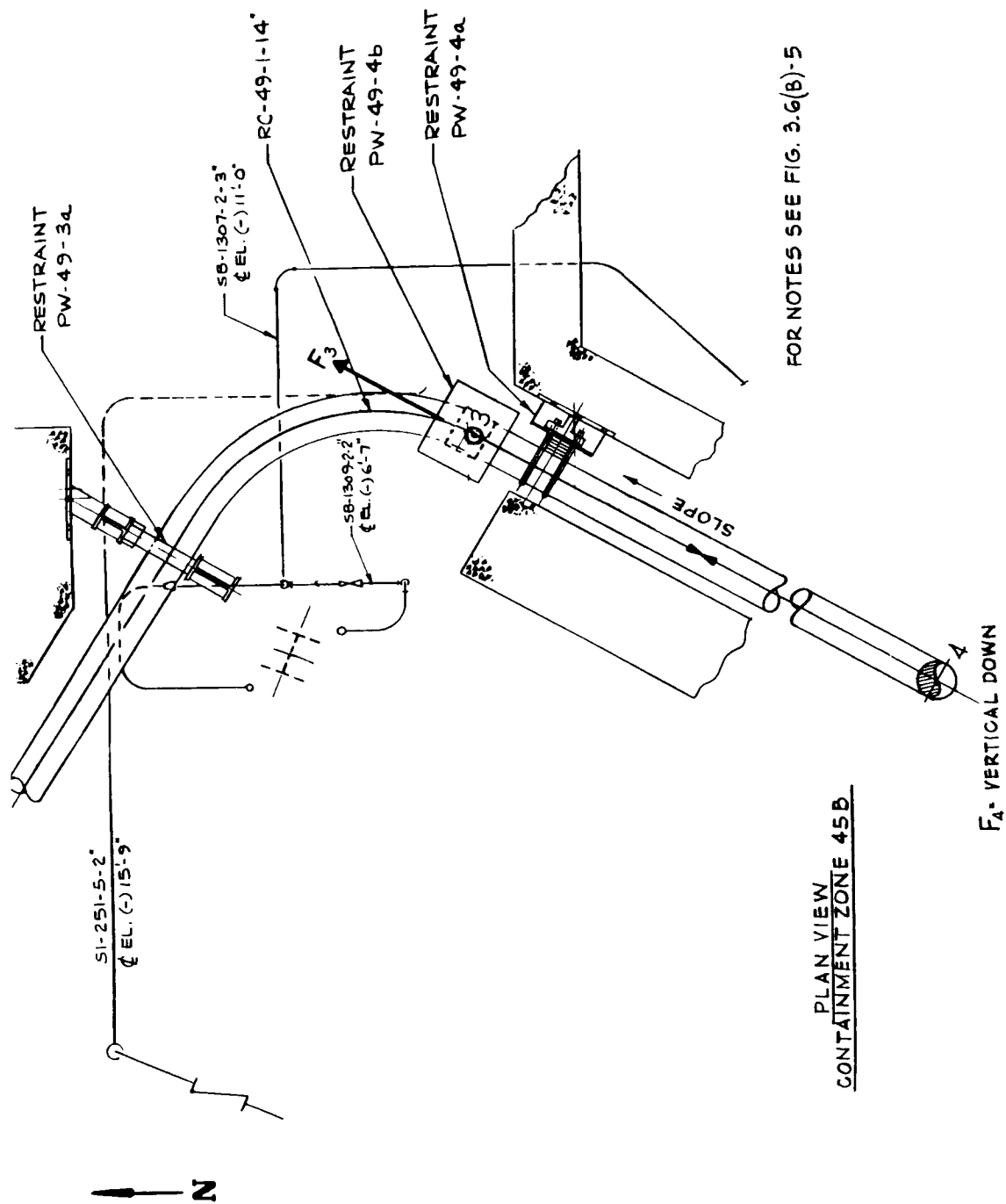
Figure 3.7(B)-4

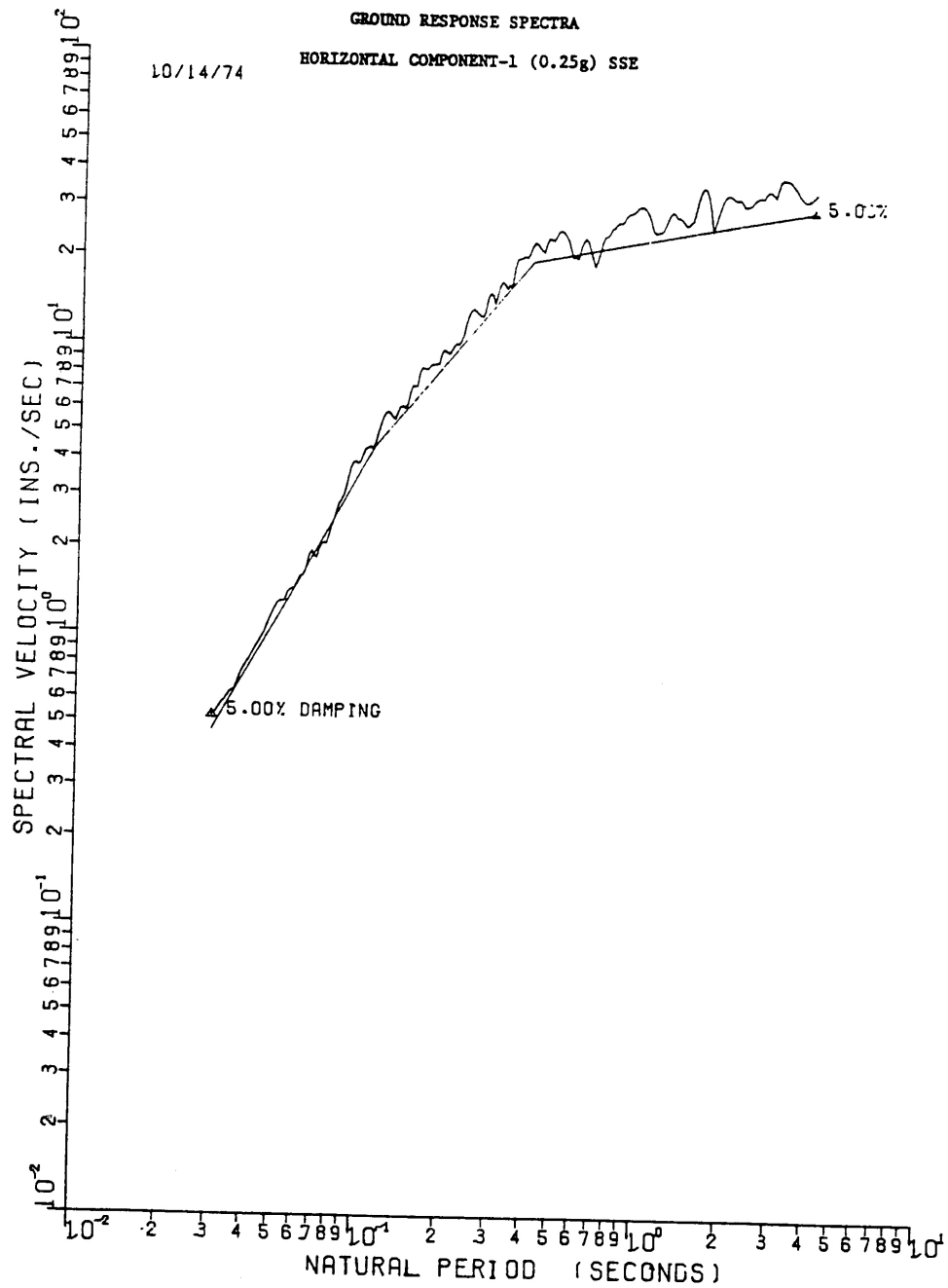


SEABROOK STATION
 UPDATED FINAL SAFETY
 ANALYSIS REPORT

1% Critical Damping Ground Response Spectrum,
 Horizontal Component 1 - SSE

Figure 3.7(B)-5

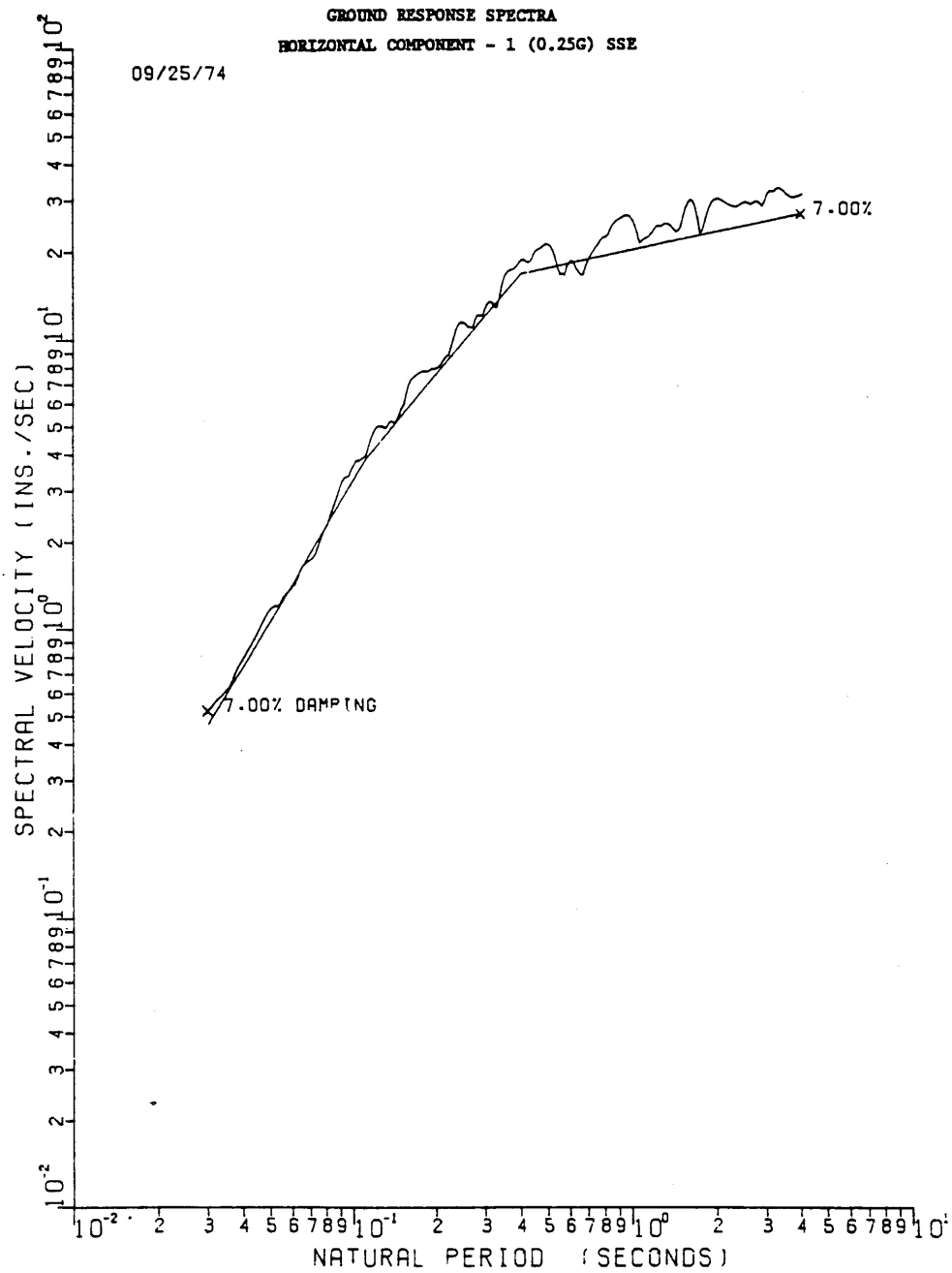




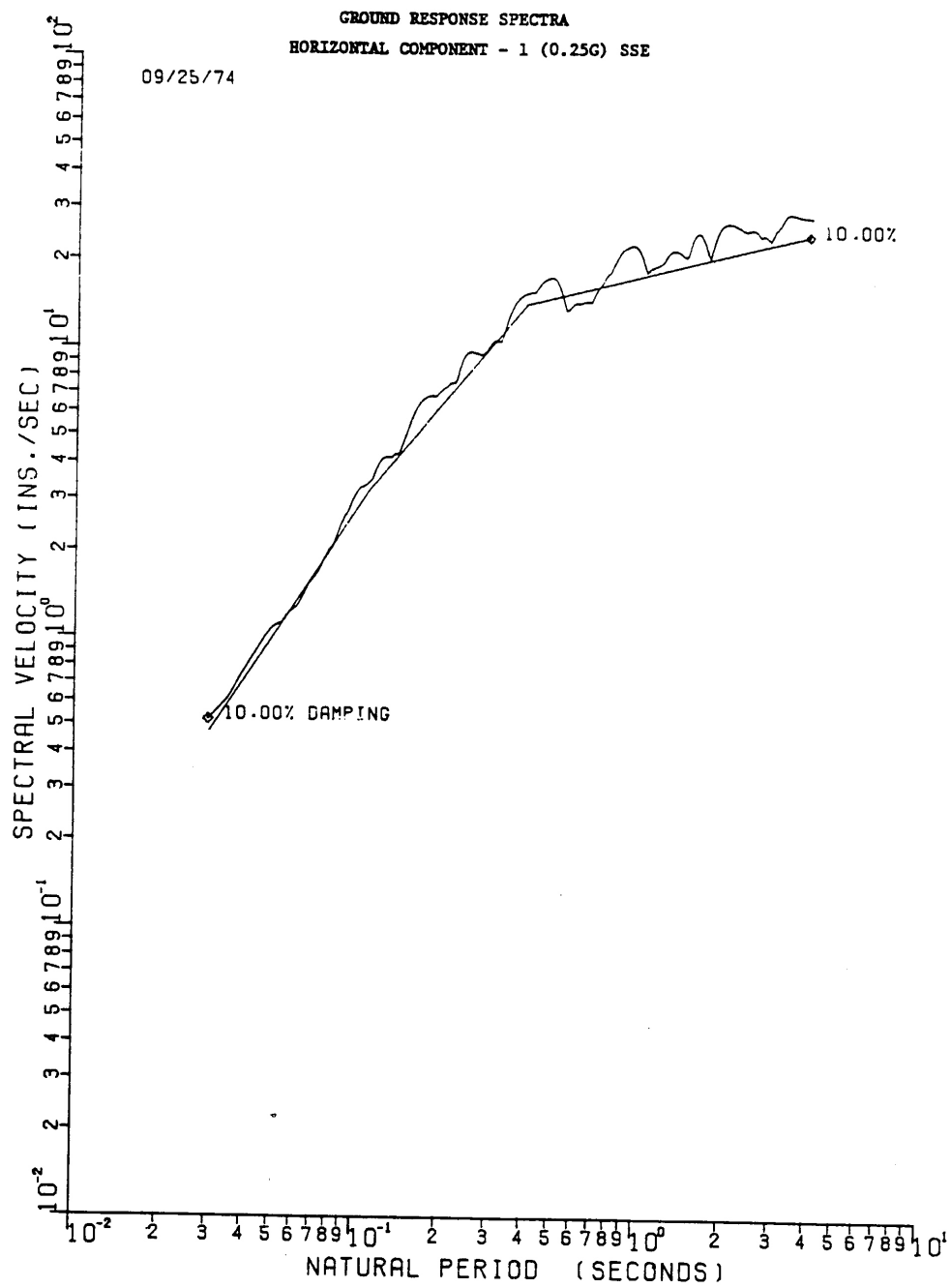
SEABROOK STATION
UPDATED FINAL SAFETY
ANALYSIS REPORT

5% Critical Damping Ground Response Spectrum,
Horizontal Component 1 - SSE

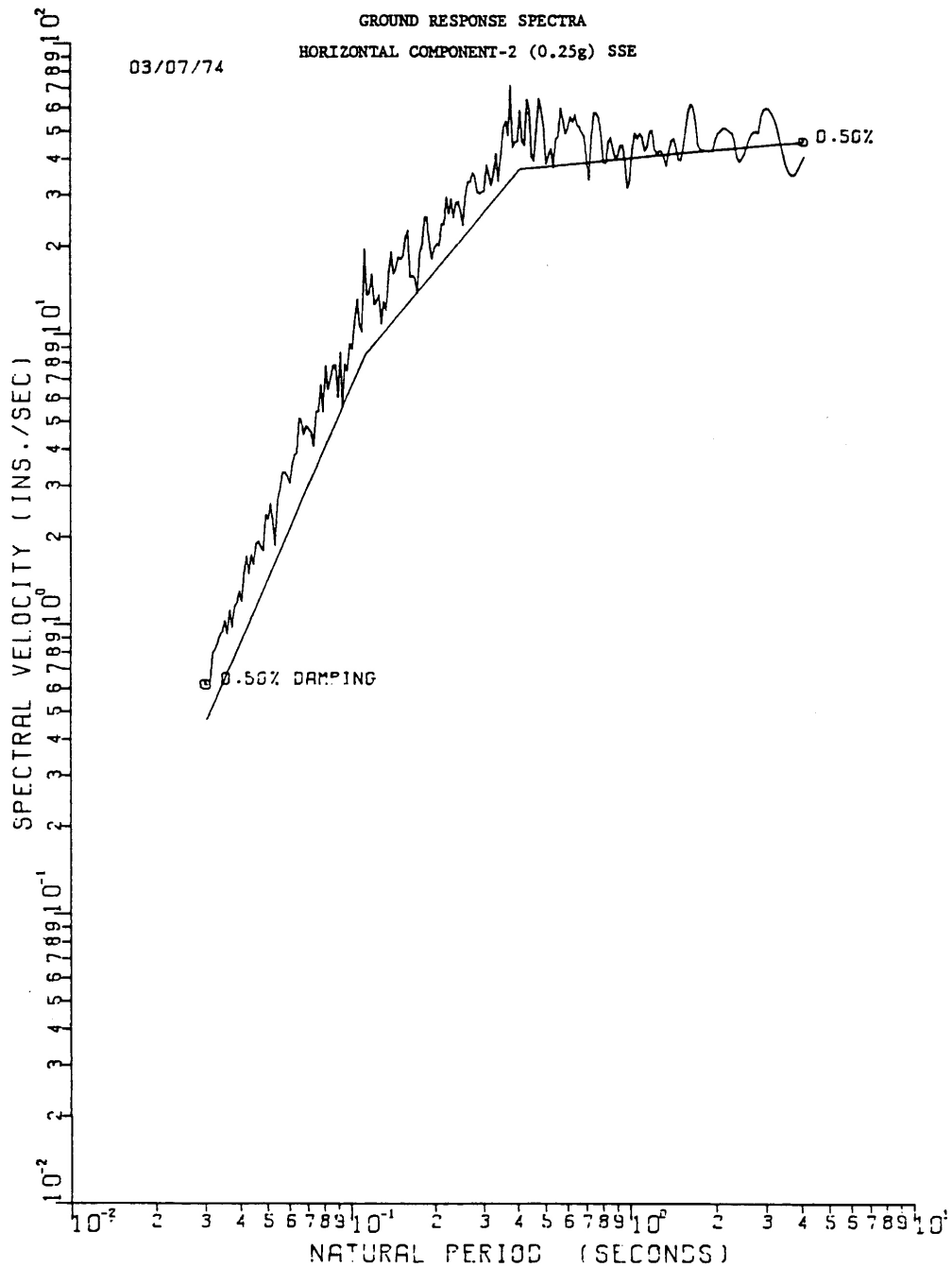
Figure 3.7(B)-7



SEABROOK STATION UPDATED FINAL SAFETY ANALYSIS REPORT	7% Critical Damping Ground Response Spectrum, Horizontal Component 1 - SSE	
		Figure 3.7(B)-8



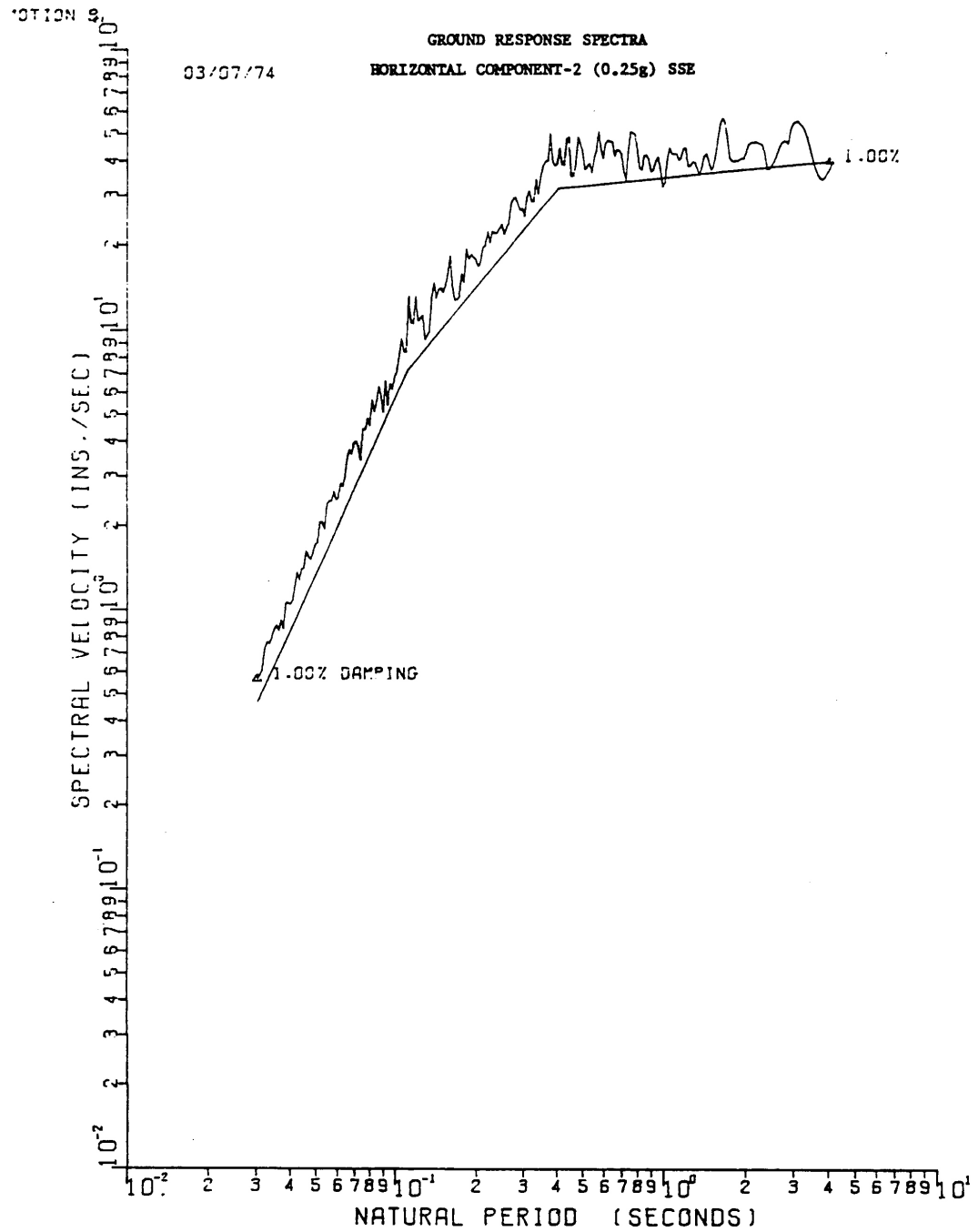
SEABROOK STATION UPDATED FINAL SAFETY ANALYSIS REPORT	10% Critical Damping Ground Response Spectrum, Horizontal Component 1 - SSE	
		Figure 3.7(B)-9



SEABROOK STATION
UPDATED FINAL SAFETY
ANALYSIS REPORT

0.5% Critical Damping Ground Response Spectrum,
Horizontal Component 2 - SSE

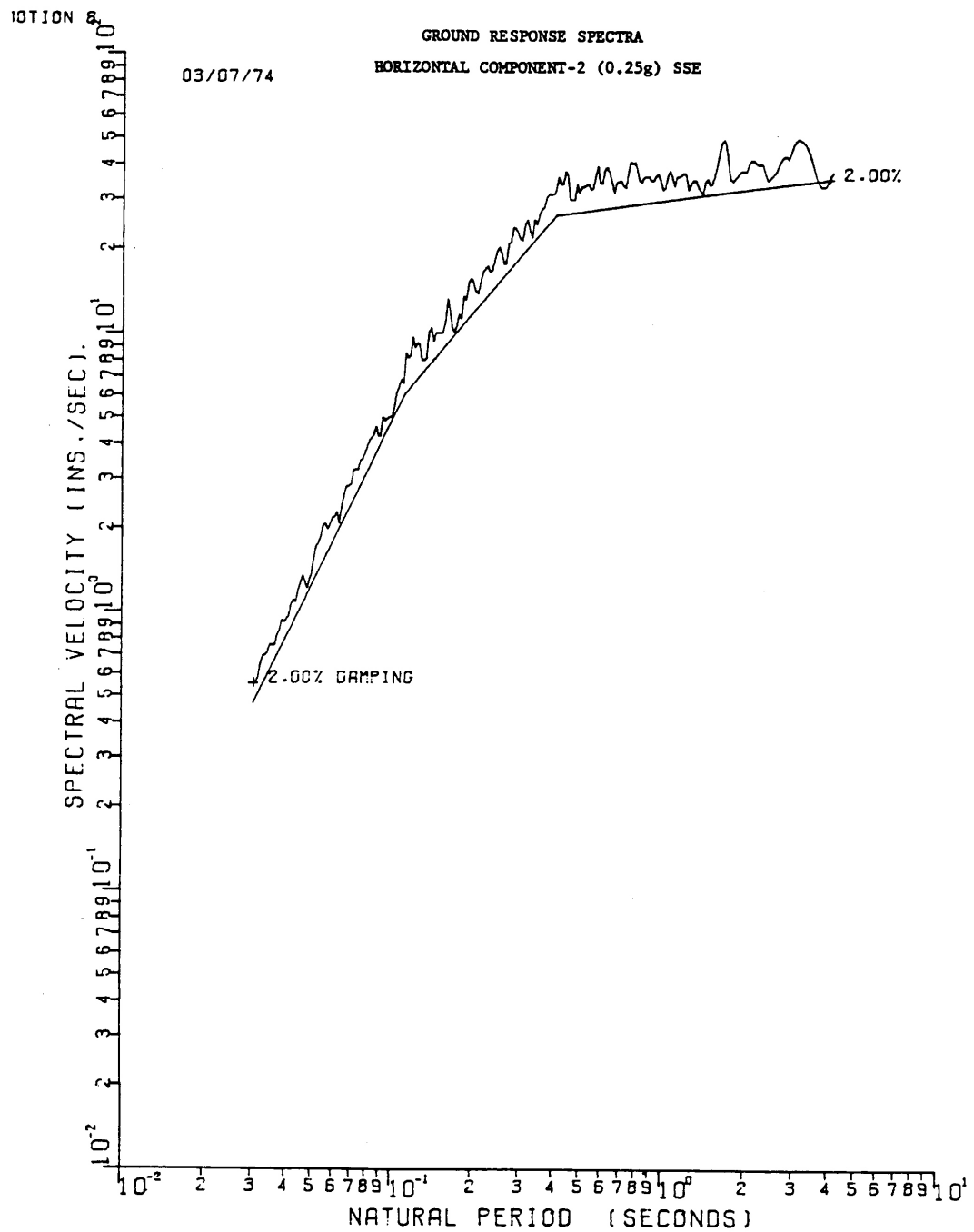
Figure 3.7(B)-10



SEABROOK STATION
UPDATED FINAL SAFETY
ANALYSIS REPORT

1% Critical Damping Ground Response Spectrum,
Horizontal Component 2 - SSE

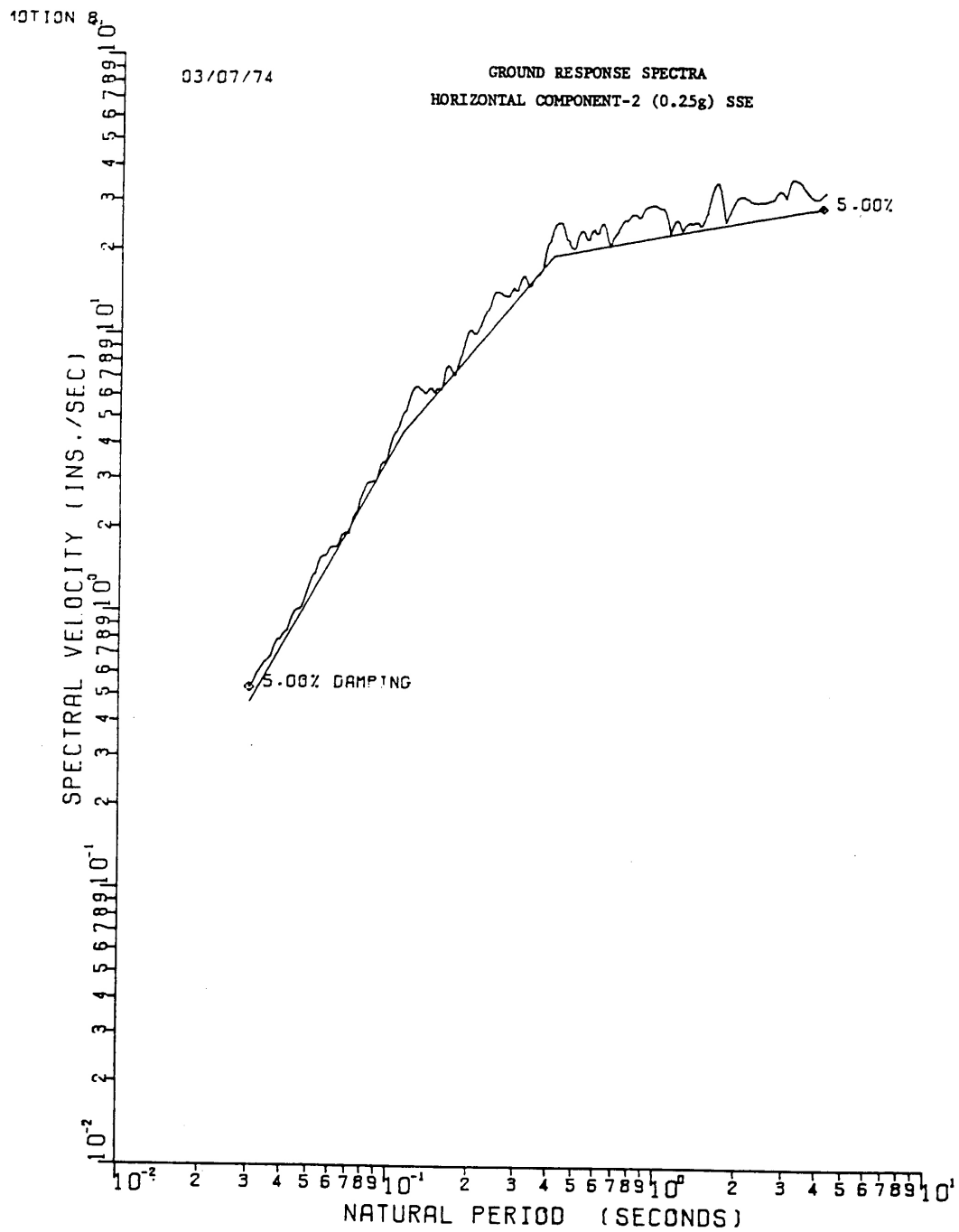
Figure 3.7(B)-11



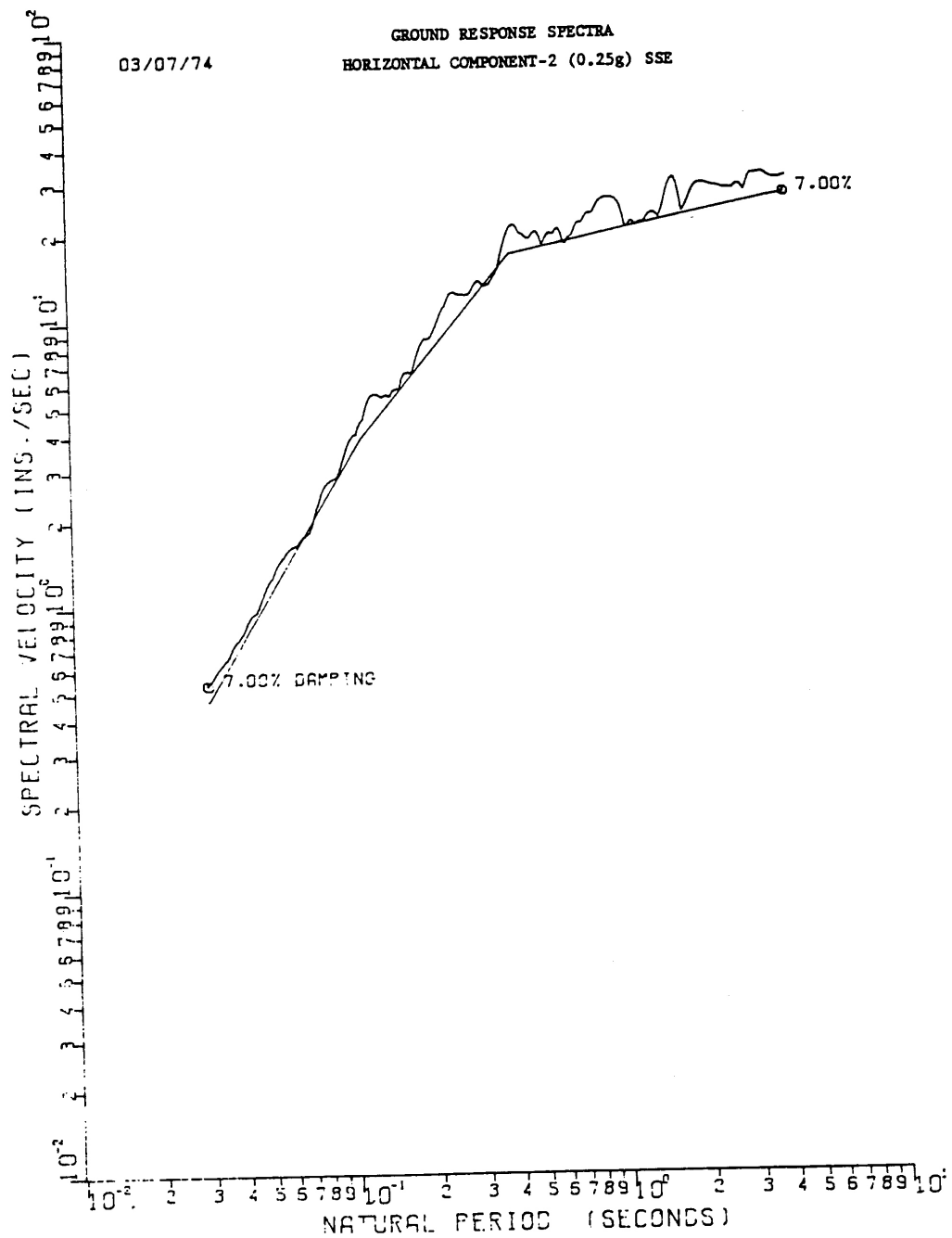
SEABROOK STATION
UPDATED FINAL SAFETY
ANALYSIS REPORT

2% Critical Damping Ground Response Spectrum,
Horizontal Component 2 - SSE

Figure 3.7(B)-12



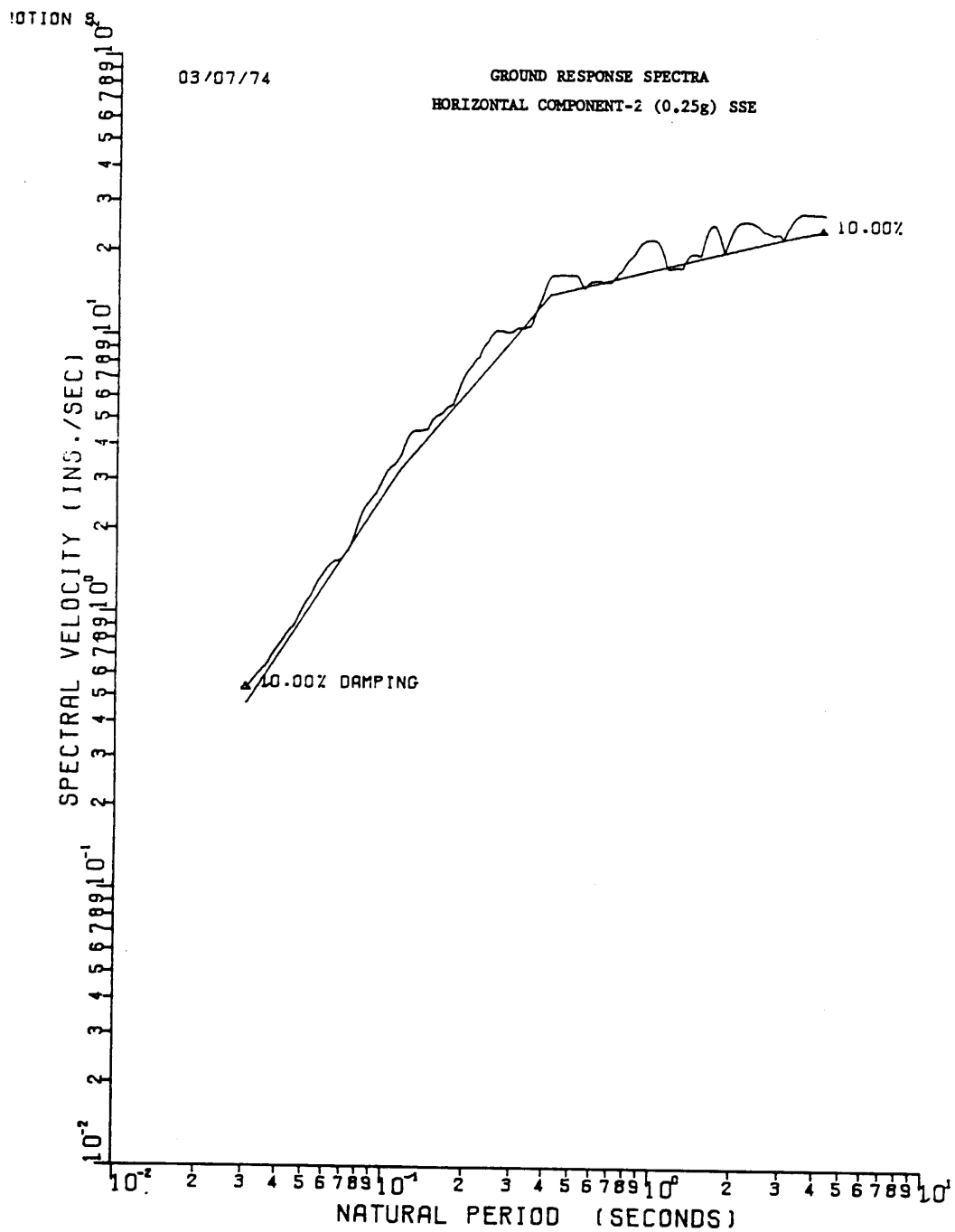
SEABROOK STATION UPDATED FINAL SAFETY ANALYSIS REPORT	5% Critical Damping Ground Response Spectrum, Horizontal Component 2 - SSE	
		Figure 3.7(B)-13



SEABROOK STATION
UPDATED FINAL SAFETY
ANALYSIS REPORT

7% Critical Damping Ground Response Spectrum,
Horizontal Component 2 - SSE

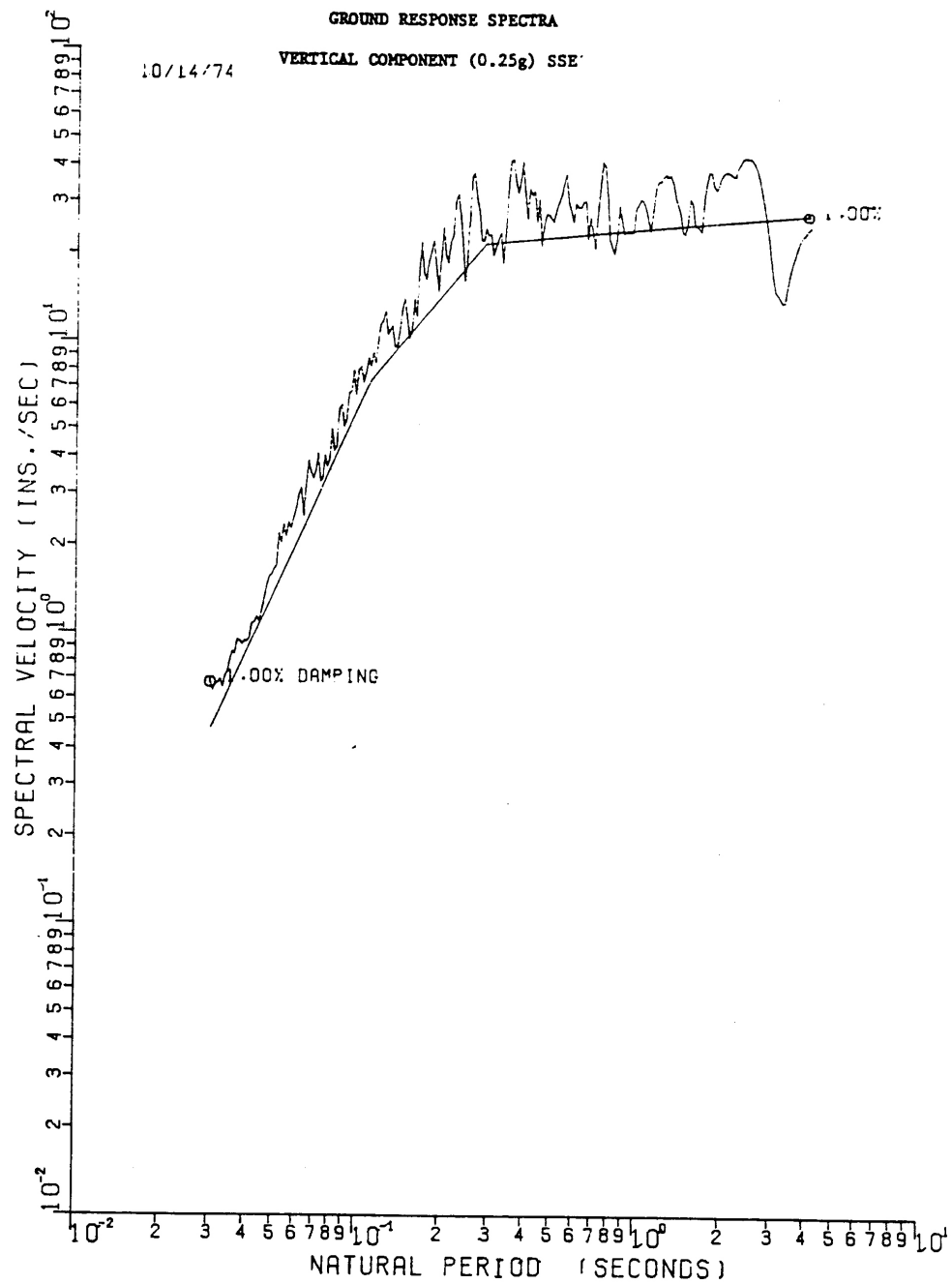
Figure 3.7(B)-14



SEABROOK STATION
UPDATED FINAL SAFETY
ANALYSIS REPORT

10% Critical Damping Ground Response Spectrum,
Horizontal Component 2 - SSE

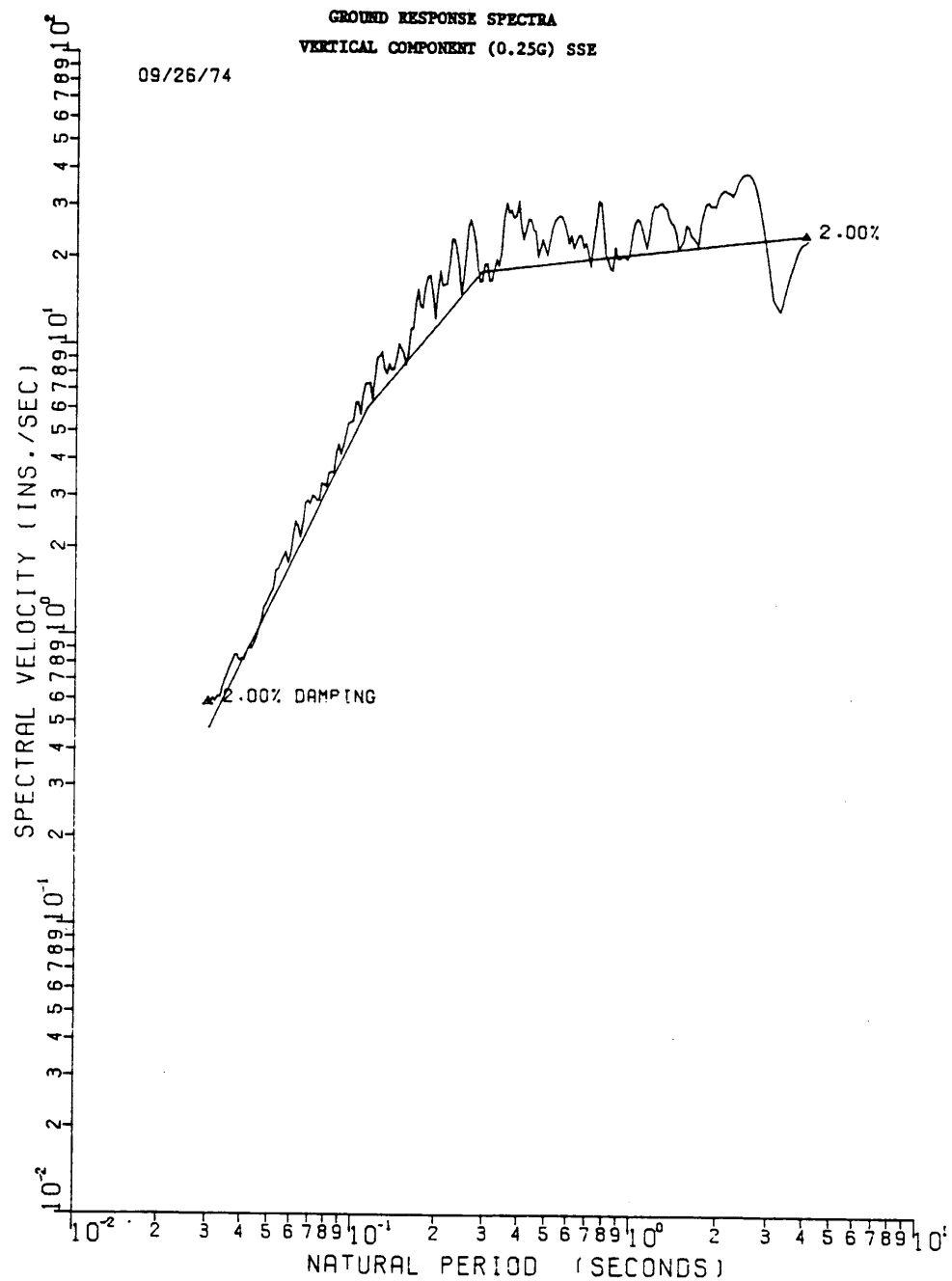
Figure 3.7(B)-15



SEABROOK STATION
UPDATED FINAL SAFETY
ANALYSIS REPORT

1% Critical Damping Ground Response Spectrum, Vertical
Component - SSE

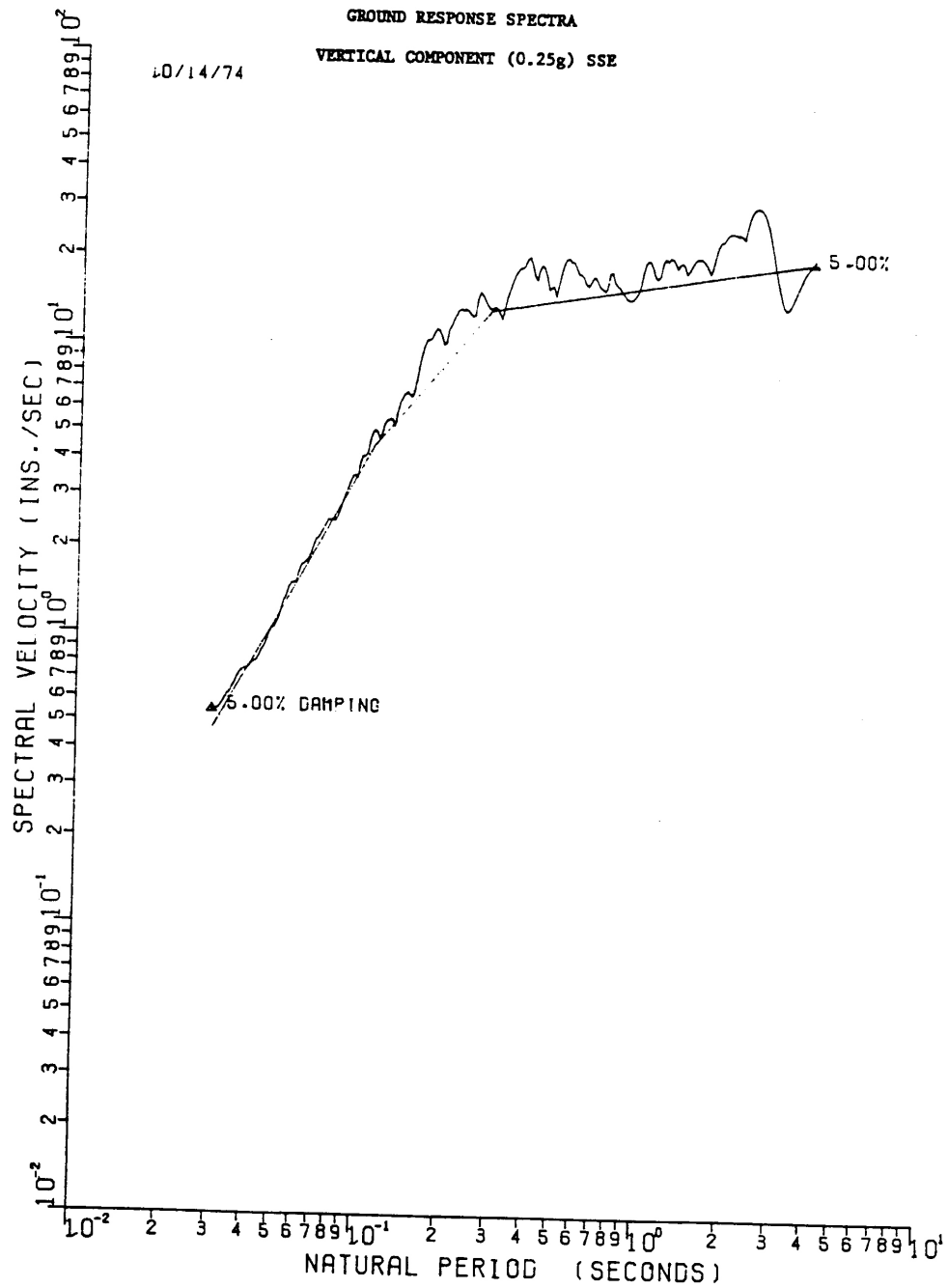
Figure 3.7(B)-16



SEABROOK STATION
UPDATED FINAL SAFETY
ANALYSIS REPORT

2% Critical Damping Ground Response Spectrum, Vertical
Component - SSE

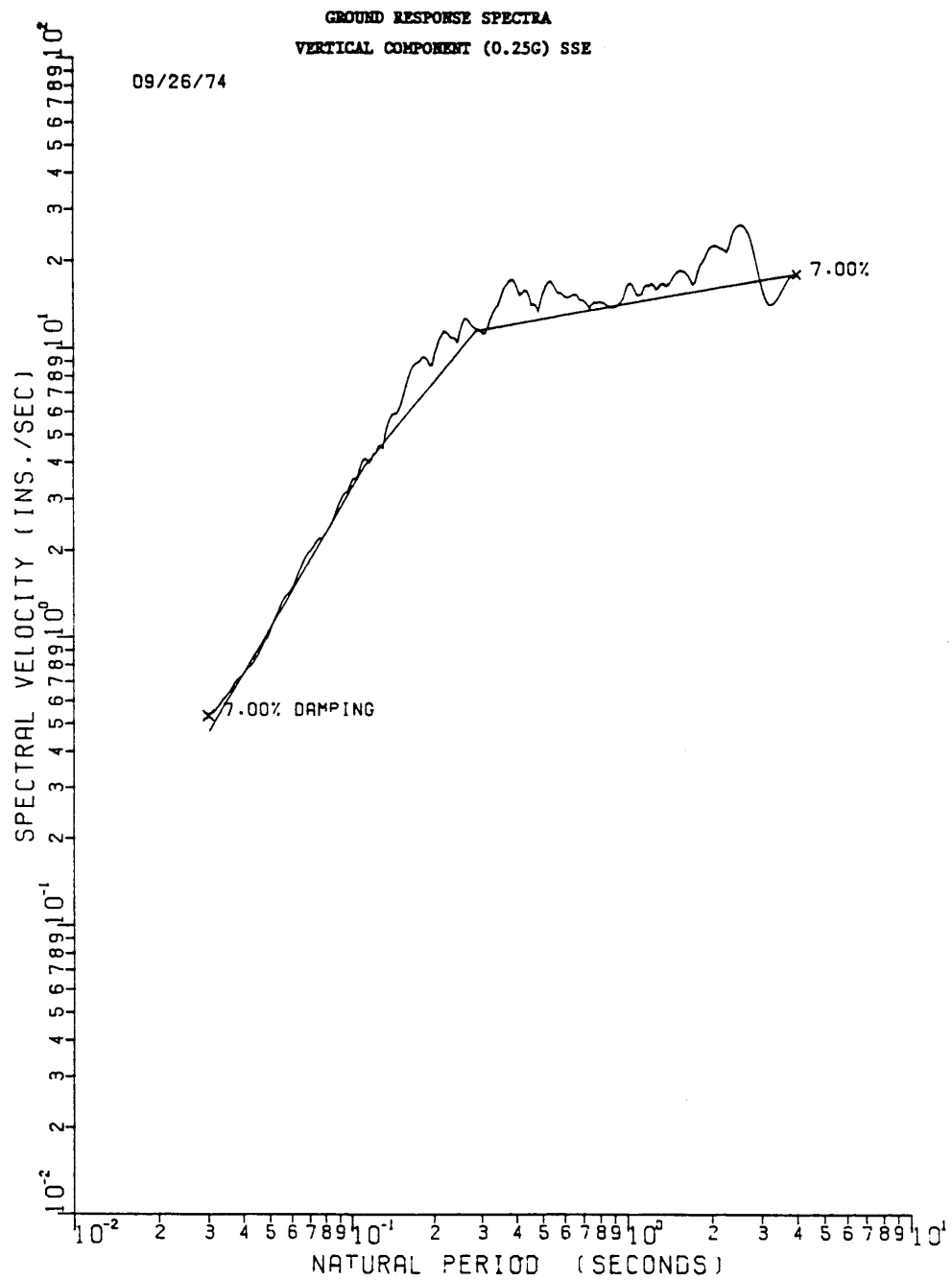
Figure 3.7(B)-17



SEABROOK STATION
UPDATED FINAL SAFETY
ANALYSIS REPORT

5% Critical Damping Ground Response Spectrum, Vertical
Component - SSE

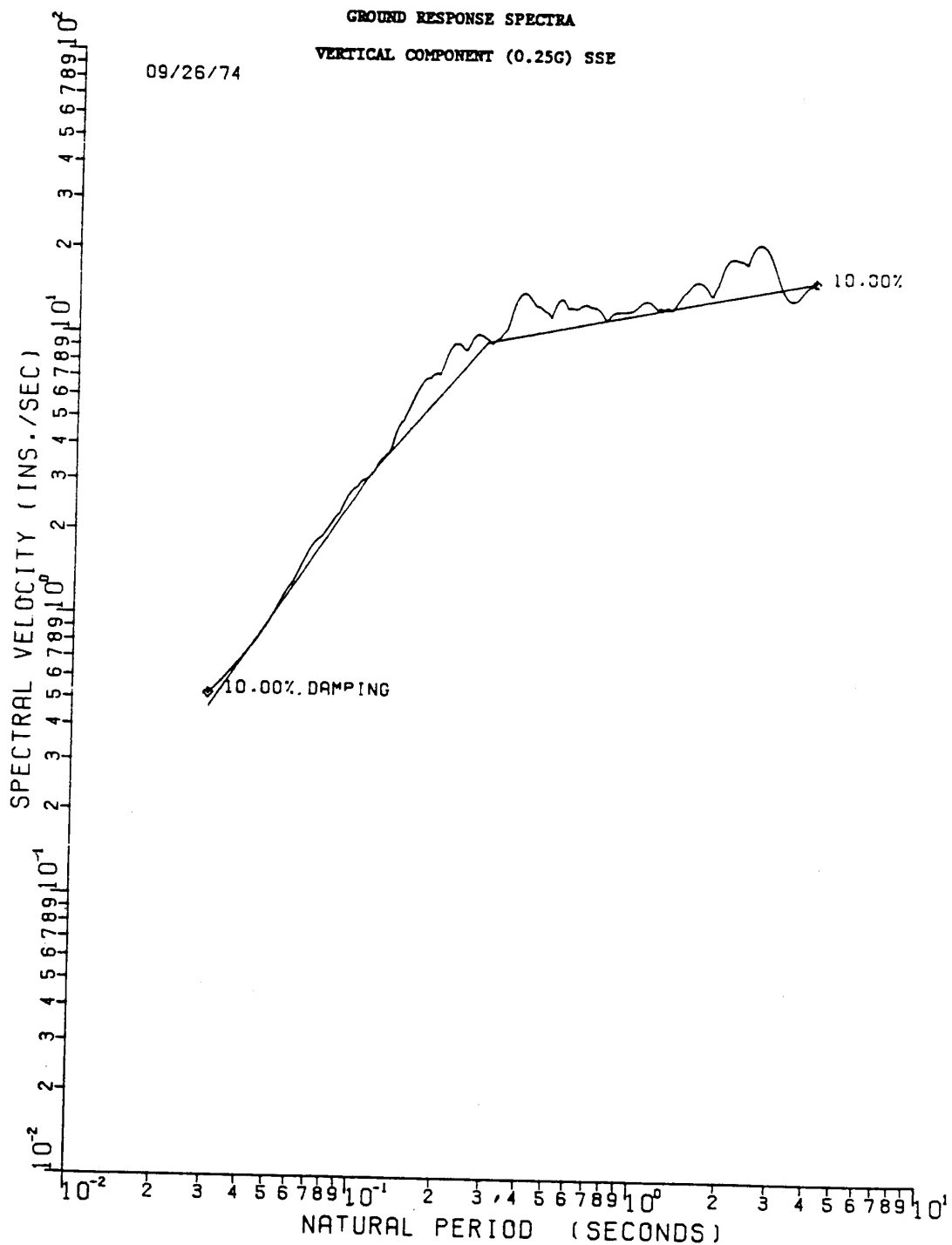
Figure 3.7(B)-18



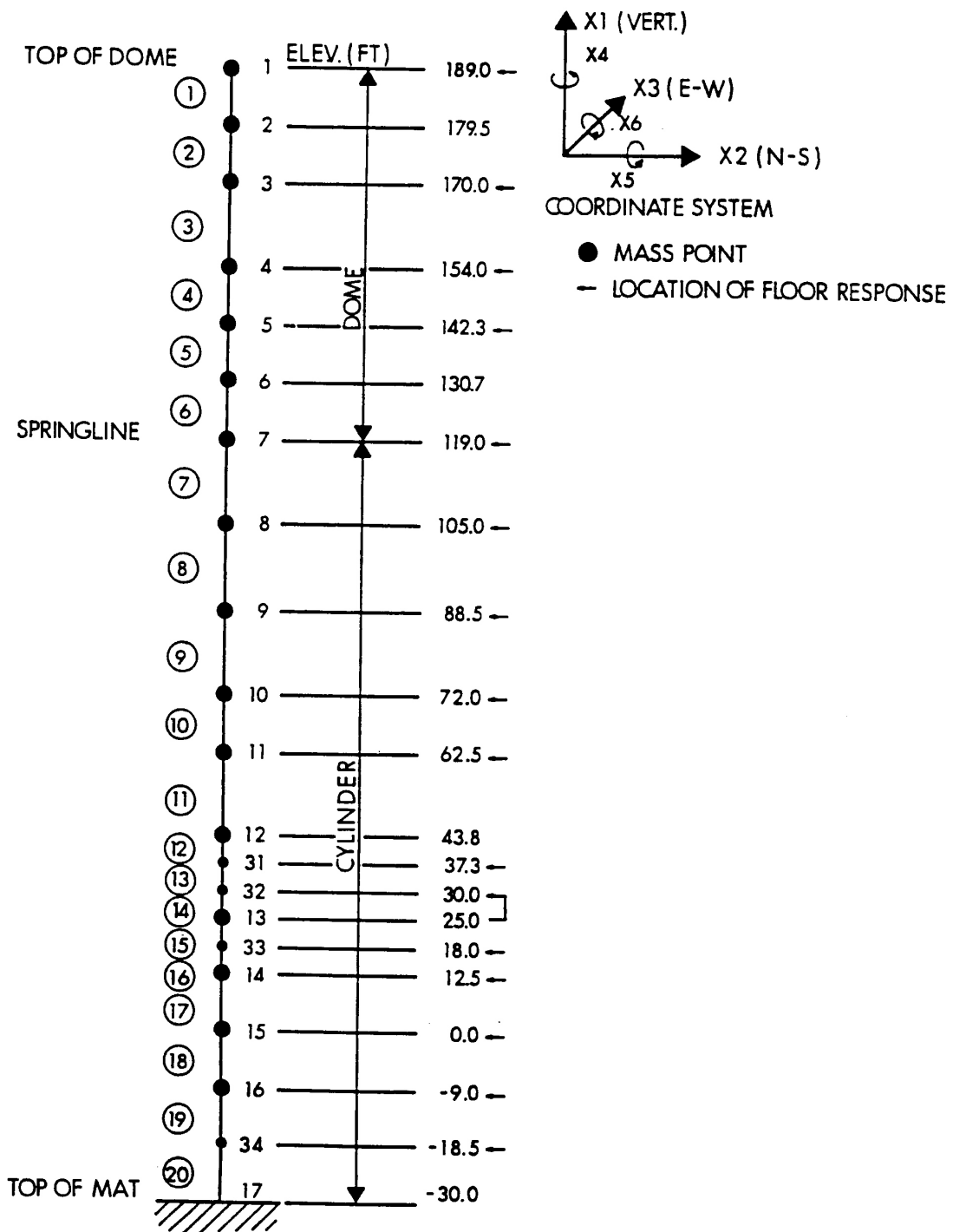
SEABROOK STATION
UPDATED FINAL SAFETY
ANALYSIS REPORT

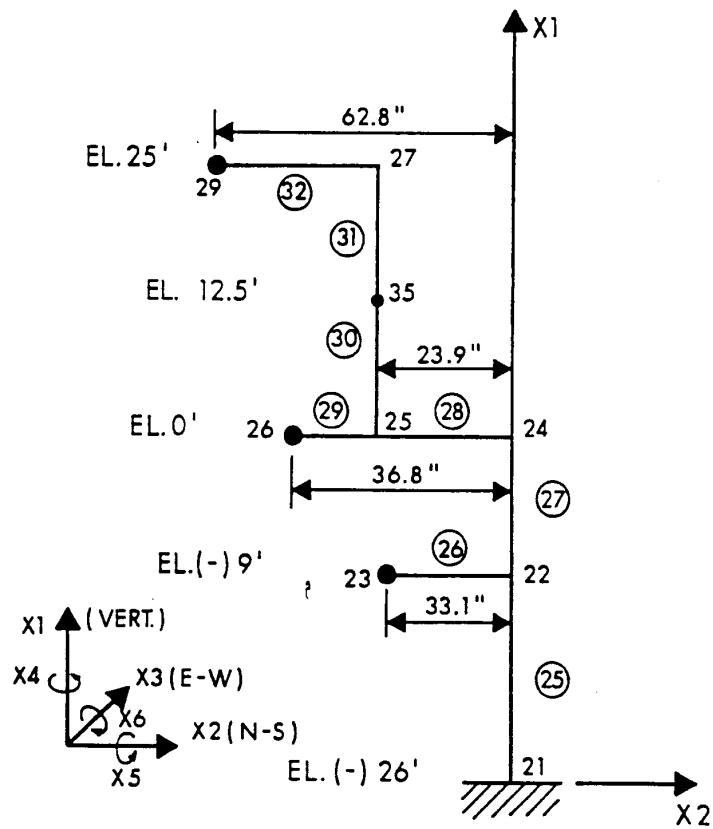
7% Critical Damping Ground Response Spectrum, Vertical
Component - SSE

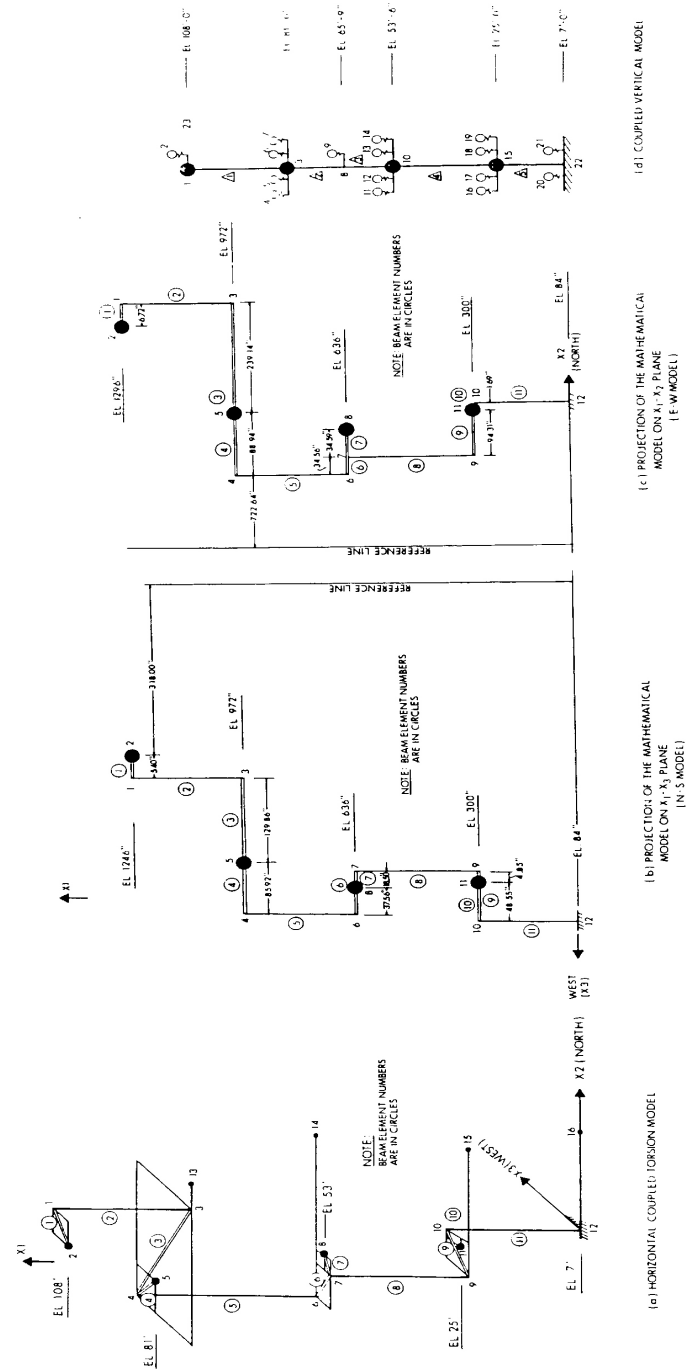
Figure 3.7(B)-19



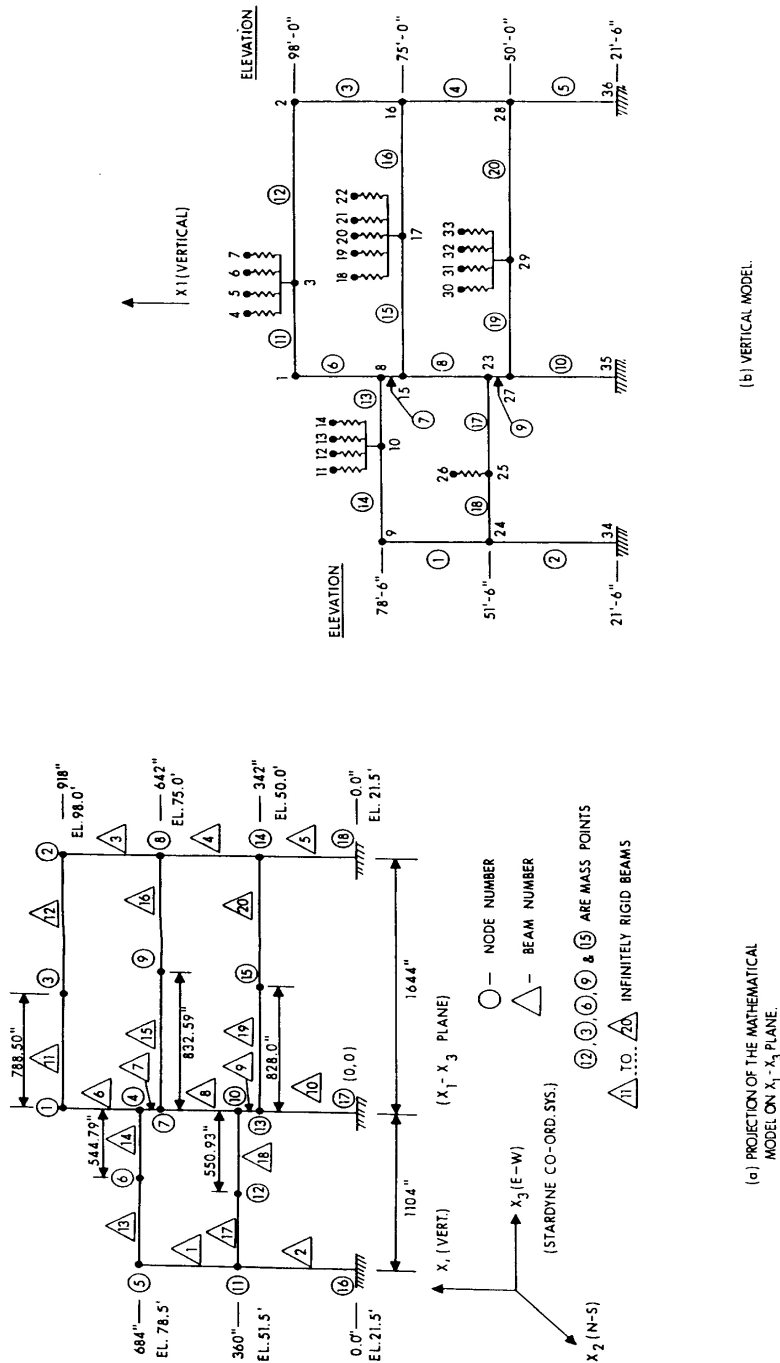
SEABROOK STATION UPDATED FINAL SAFETY ANALYSIS REPORT	10% Critical Damping Ground Response Spectrum, Vertical Component - SSE	
		Figure 3.7(B)-20

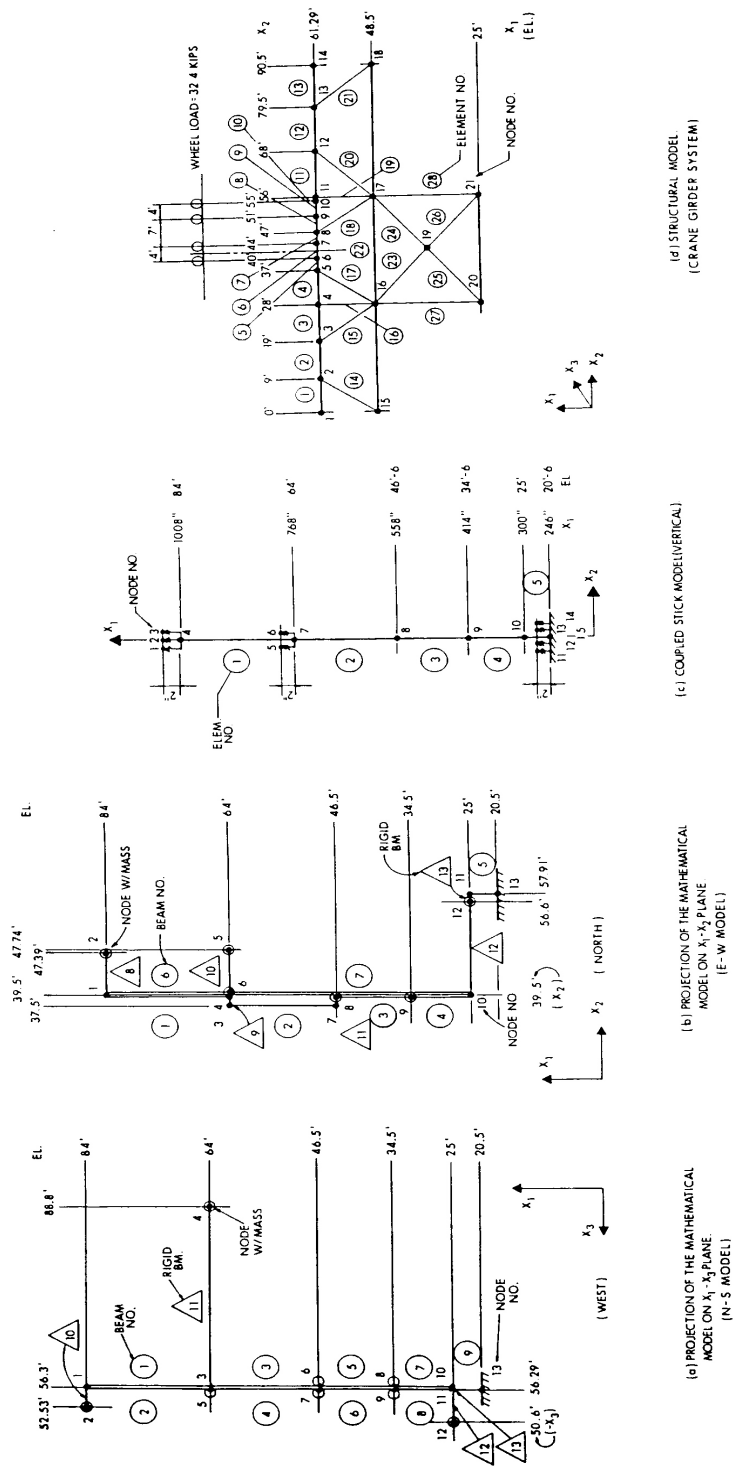


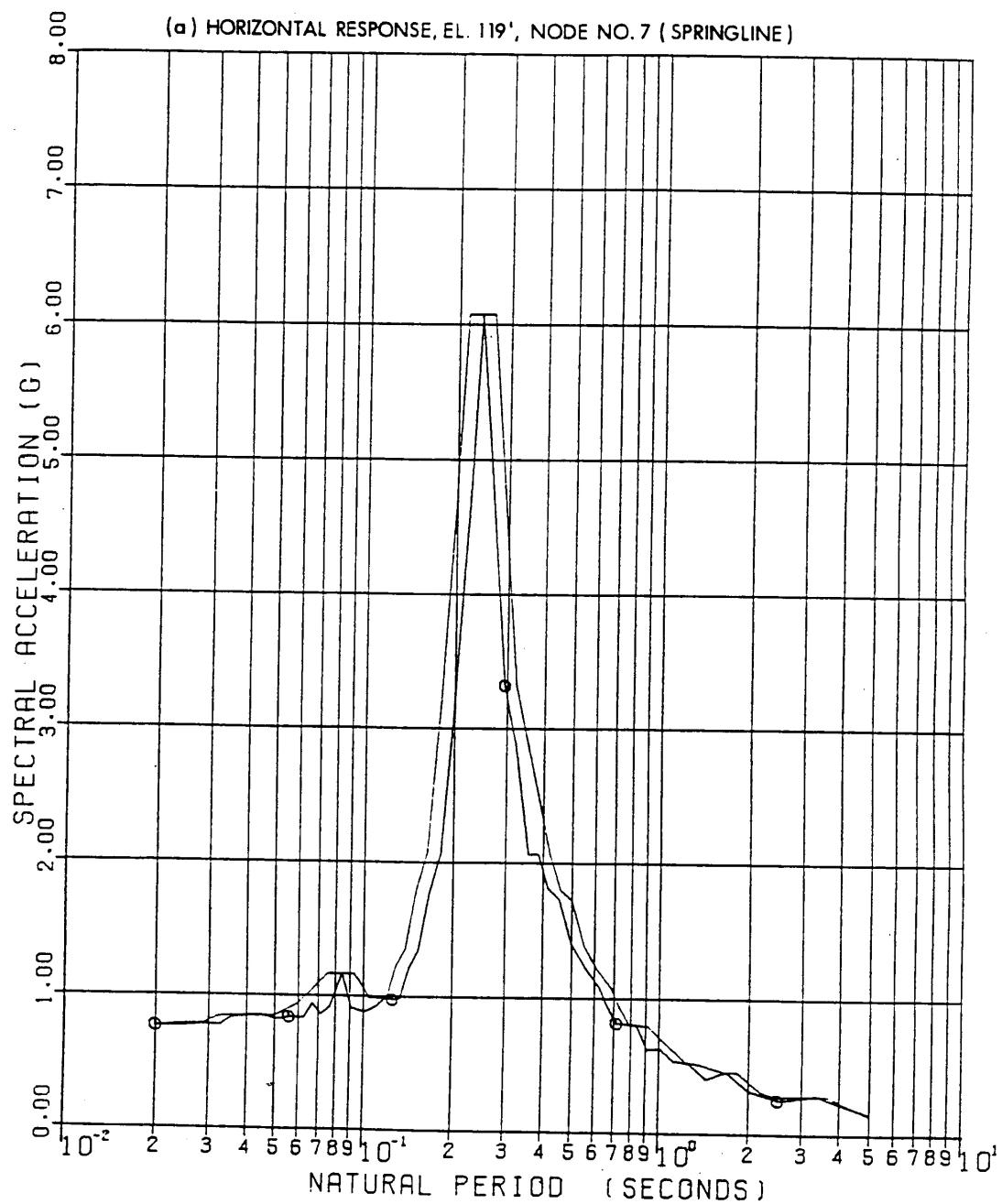


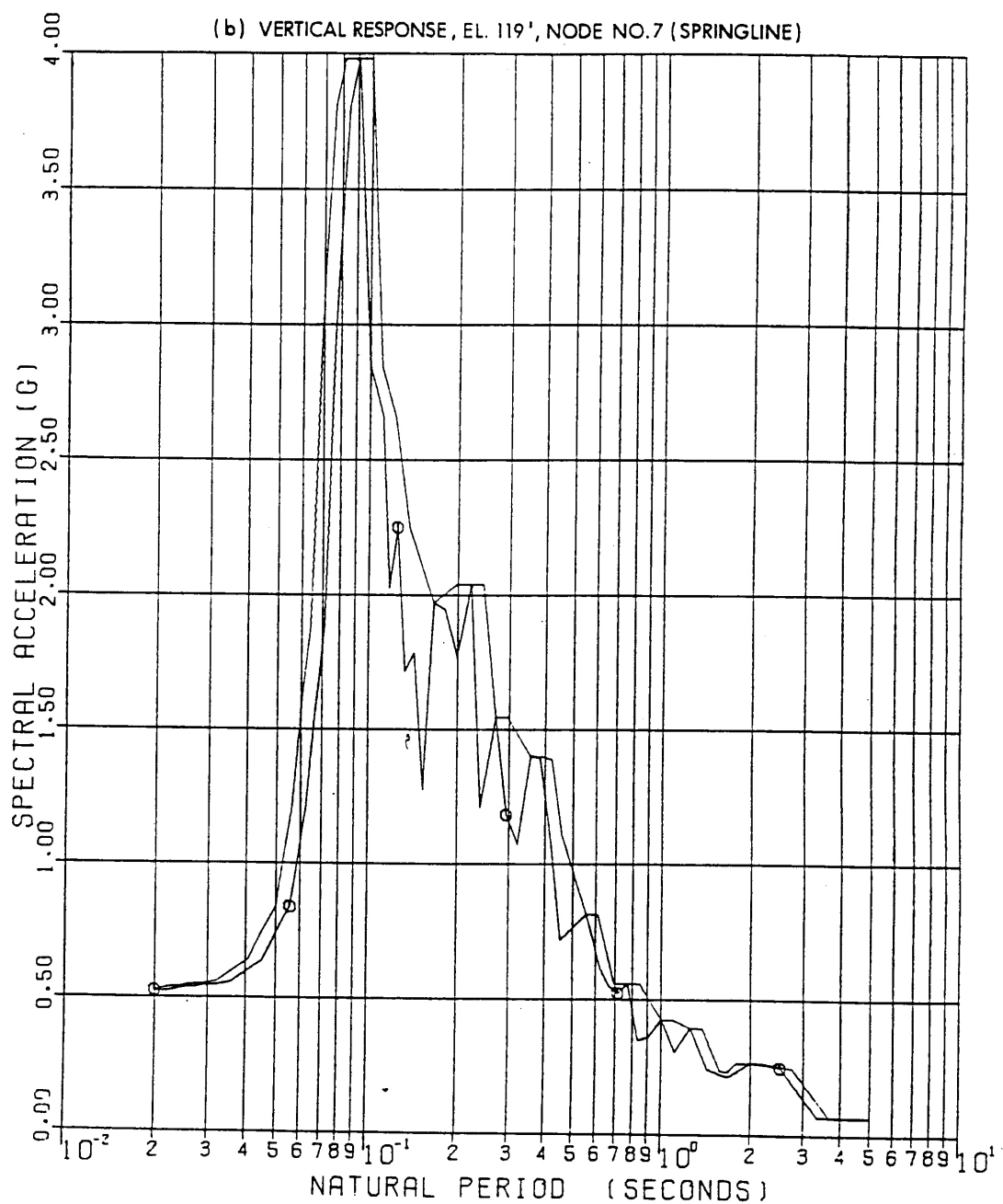


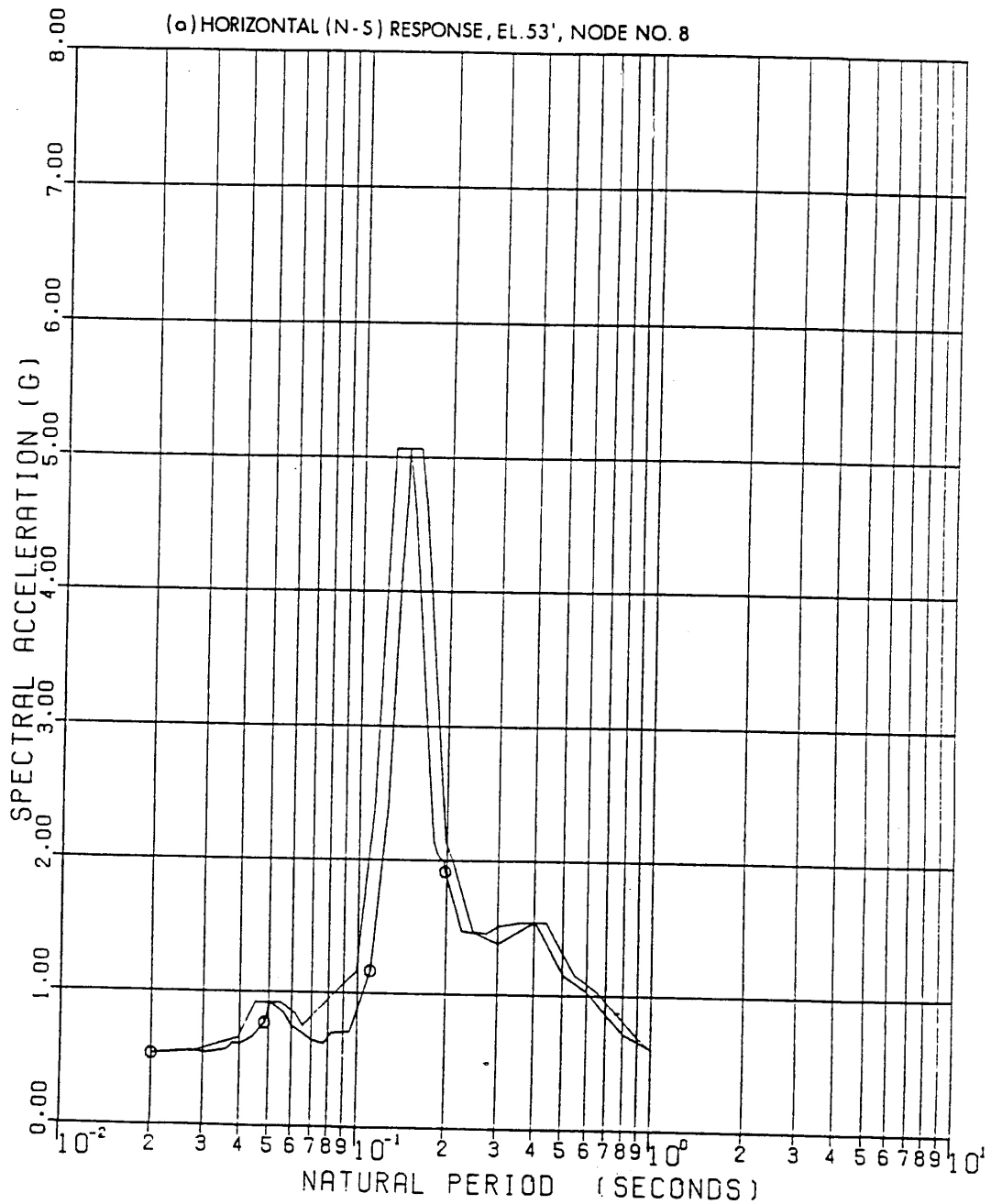
<p>SEABROOK STATION UPDATED FINAL SAFETY ANALYSIS REPORT</p>	<p>Primary Auxiliary Building Seismic Analysis - Mathematical Model</p>	
		<p>Figure 3.7(B)-23</p>

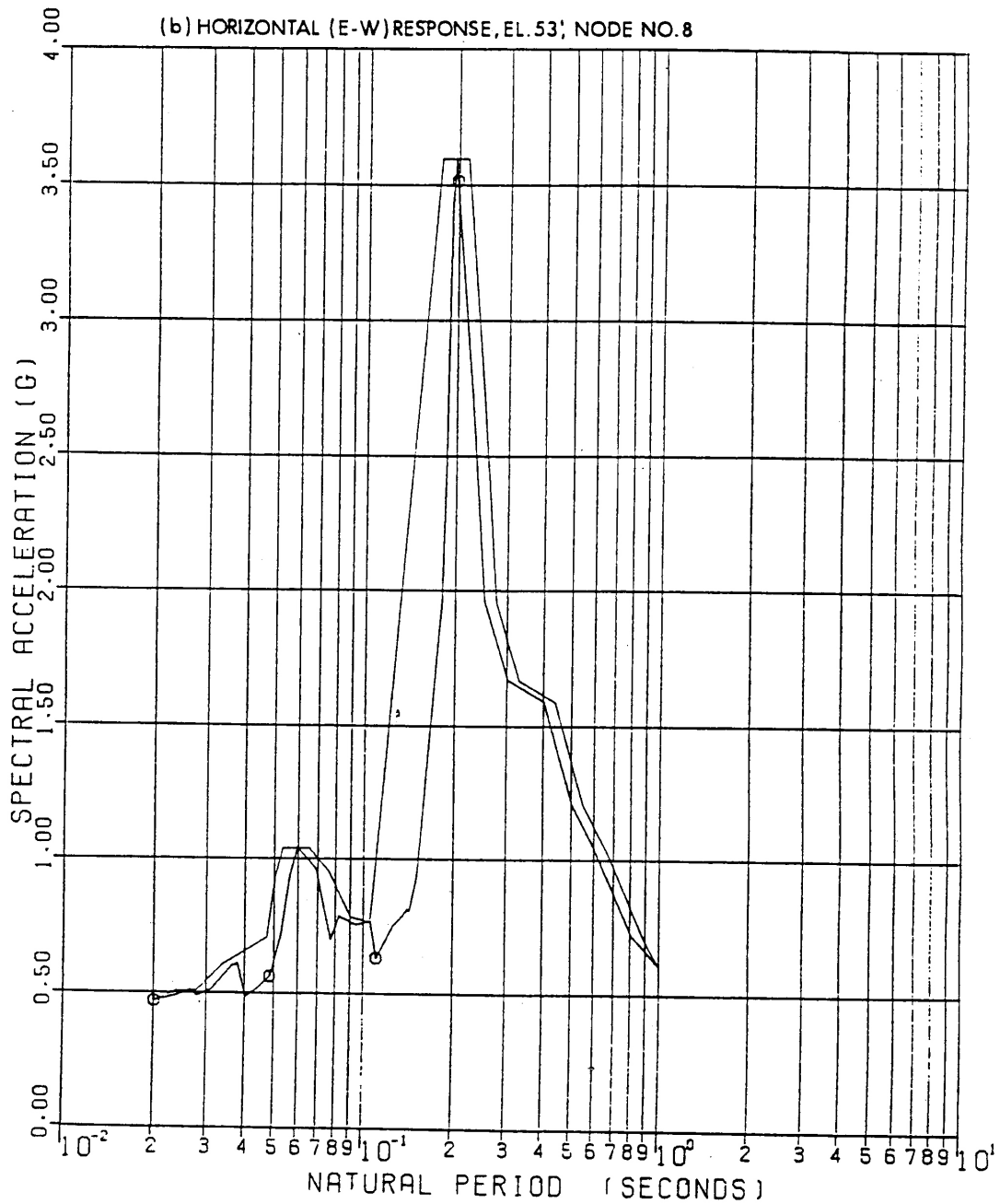


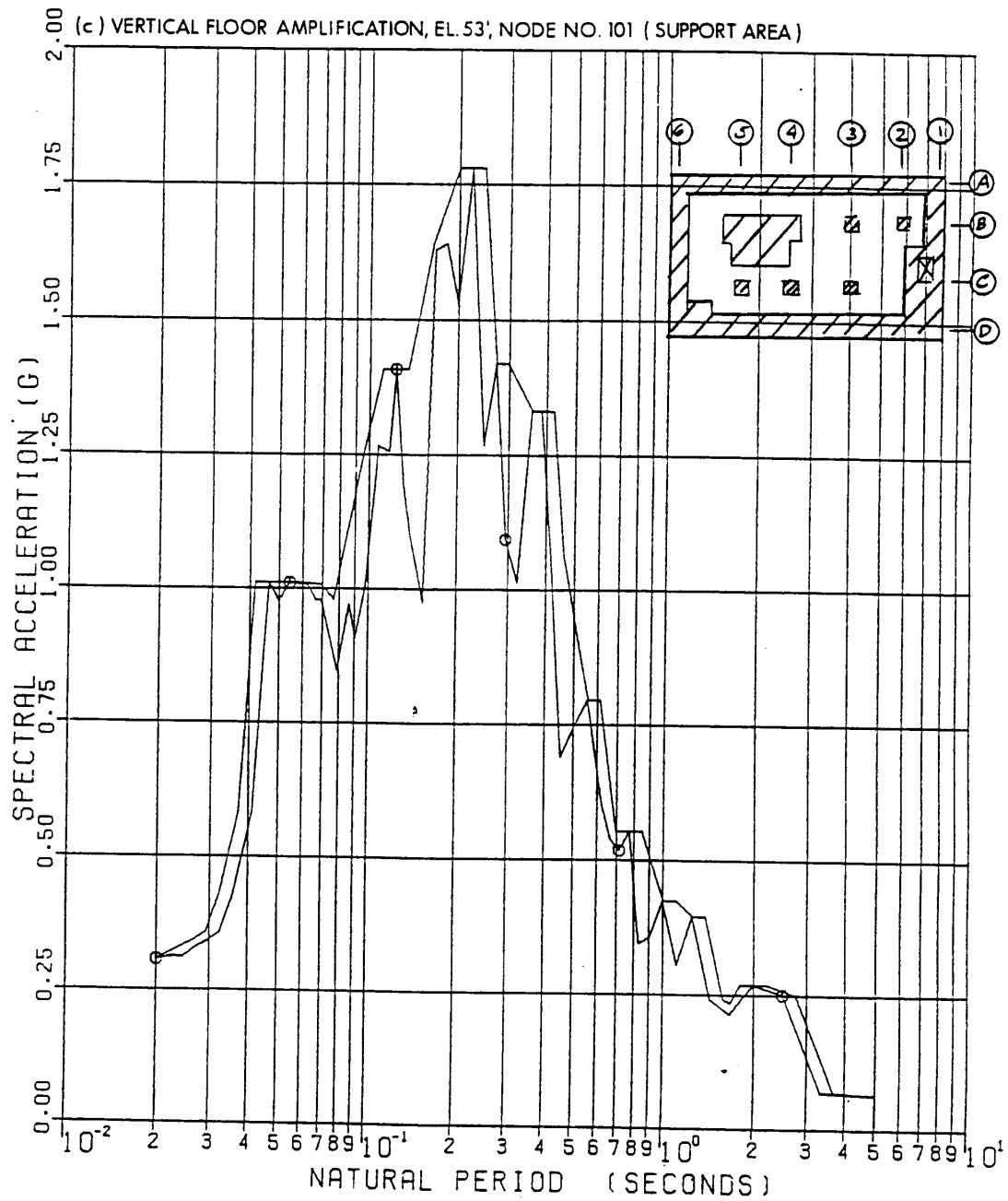


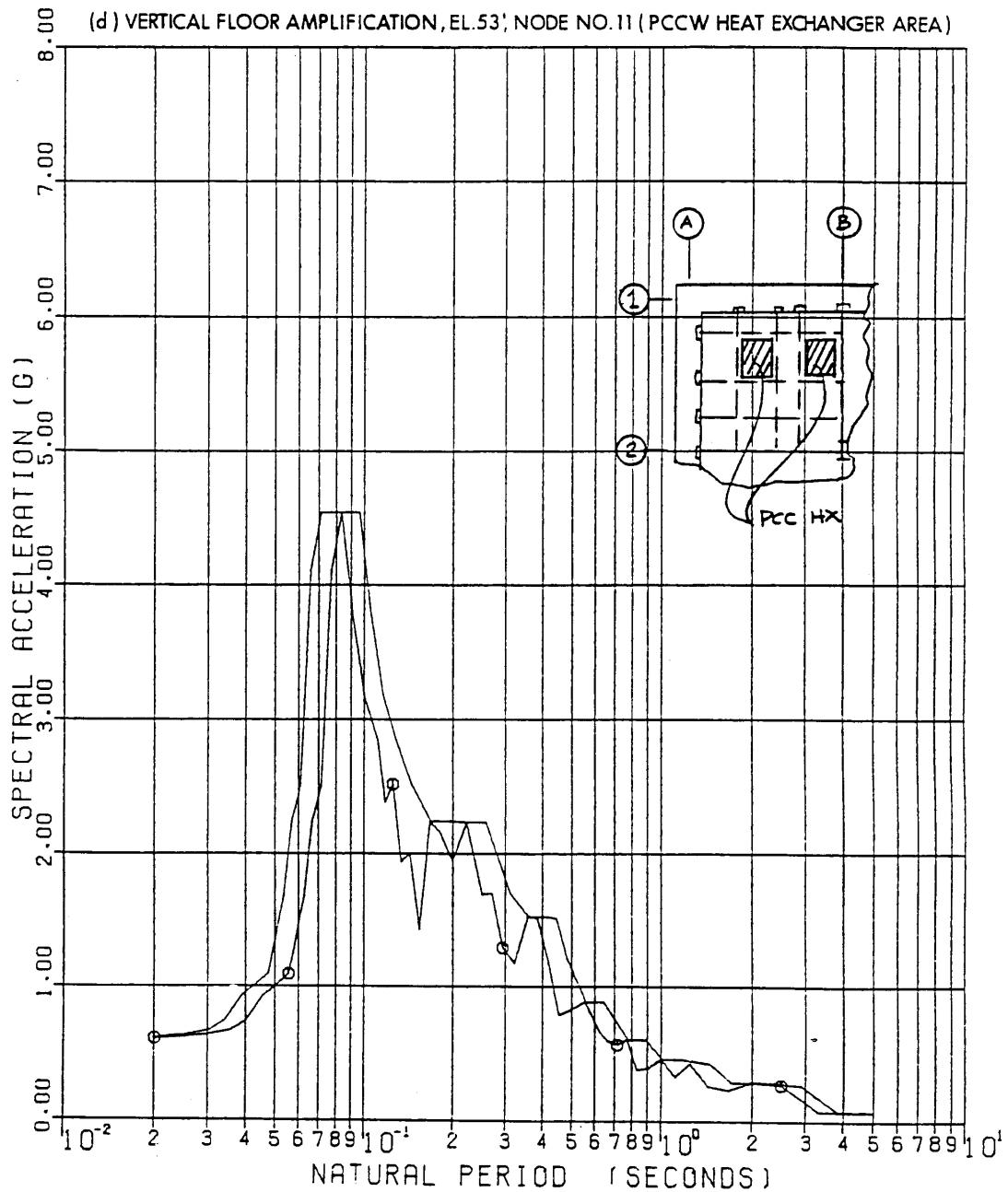


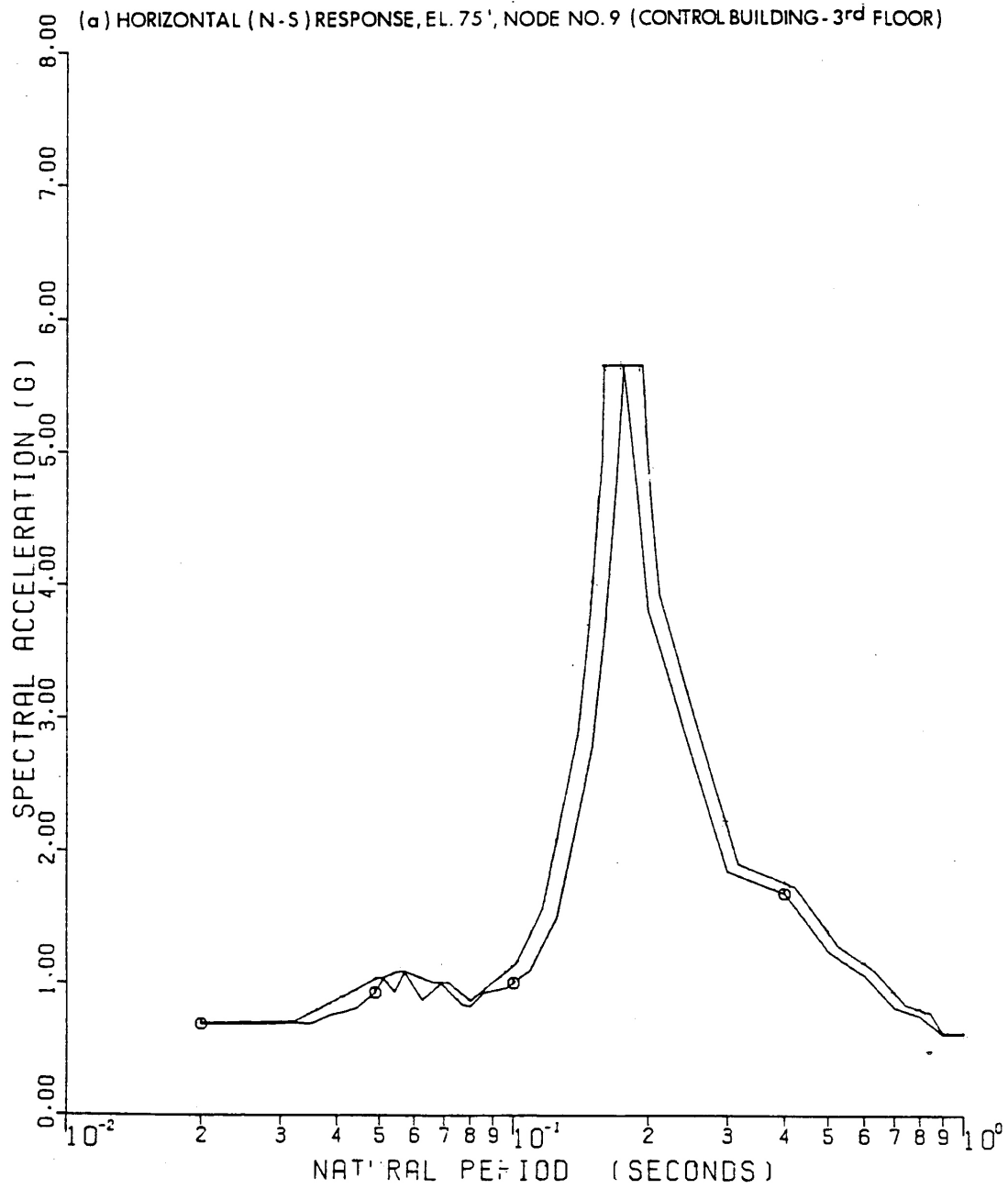




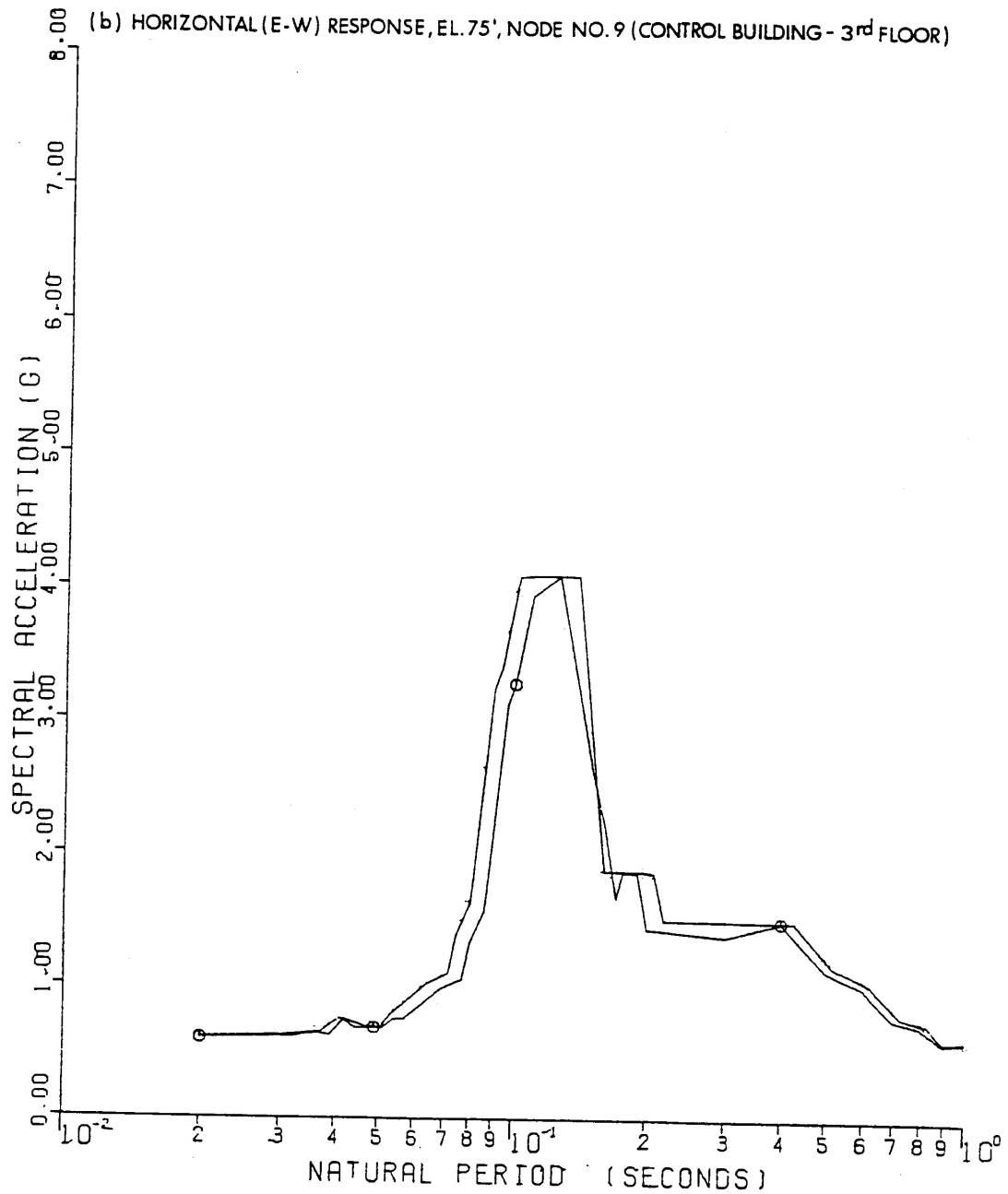




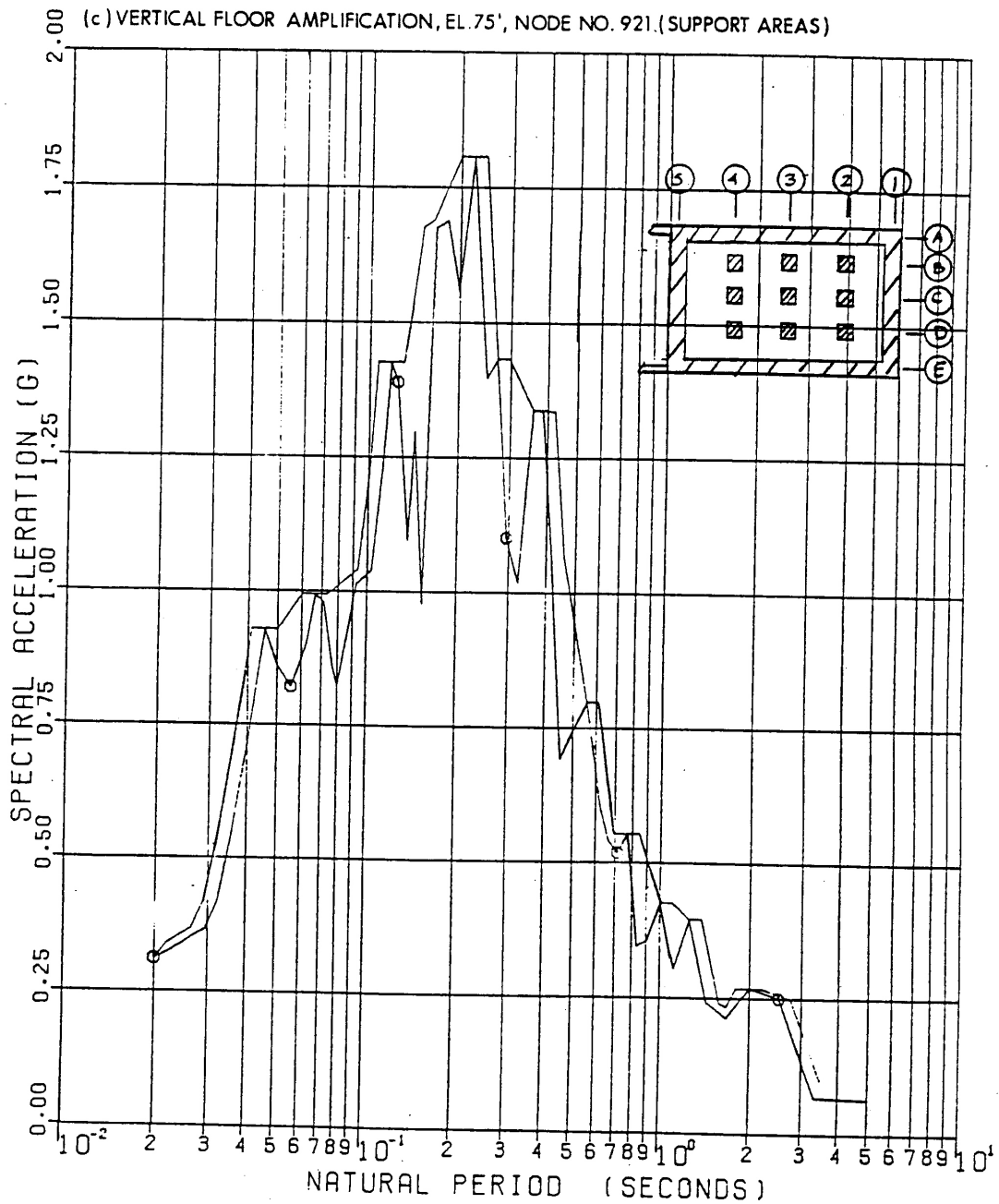


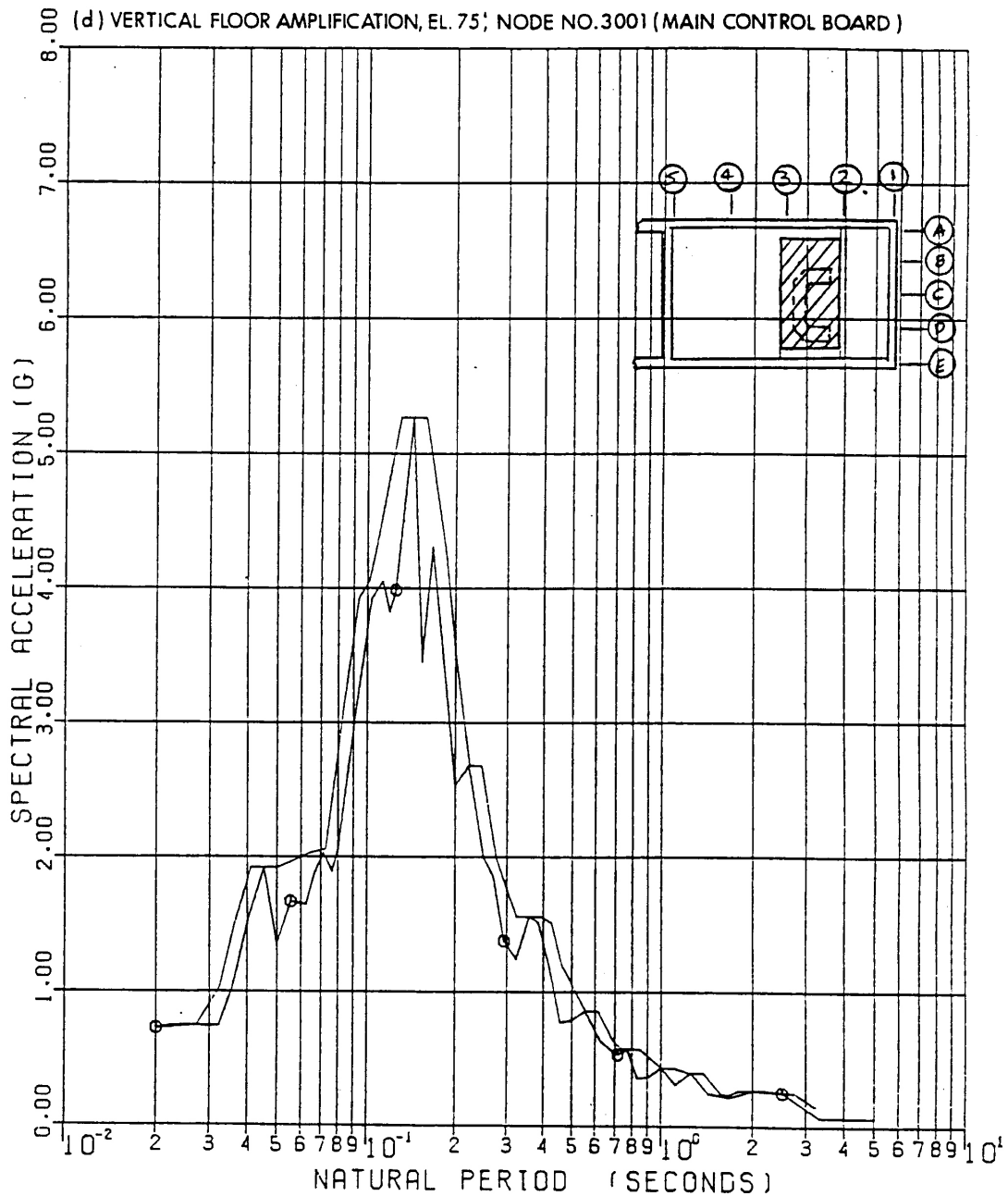


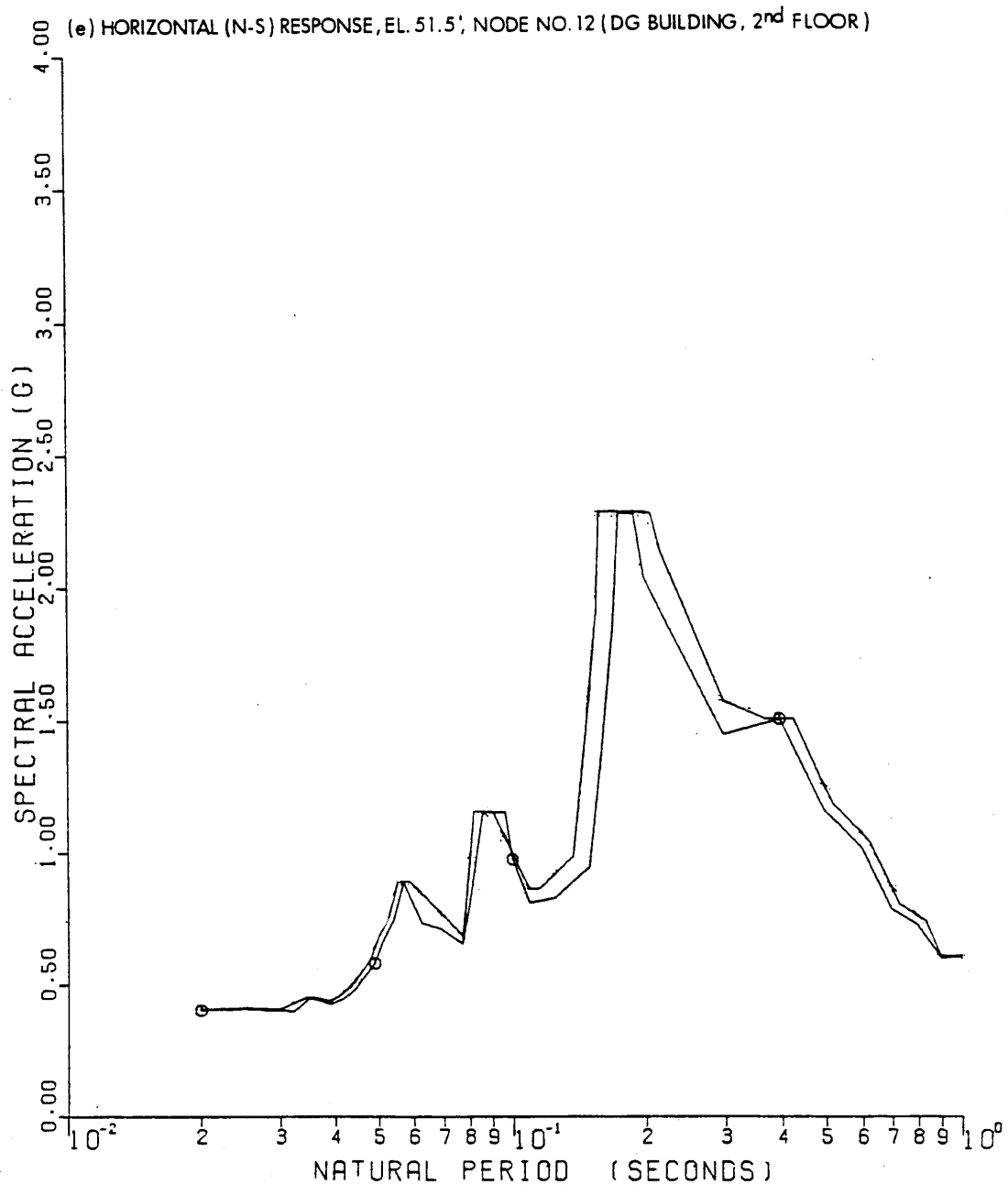
SEABROOK STATION UPDATED FINAL SAFETY ANALYSIS REPORT	Amplified Response Spectra - SSE - Control/Diesel Generator Building - 7% Structural Damping; 2% Equipment Damping [8 Sheets]	
	Figure 3.7(B)-28	Sh 1 of 8

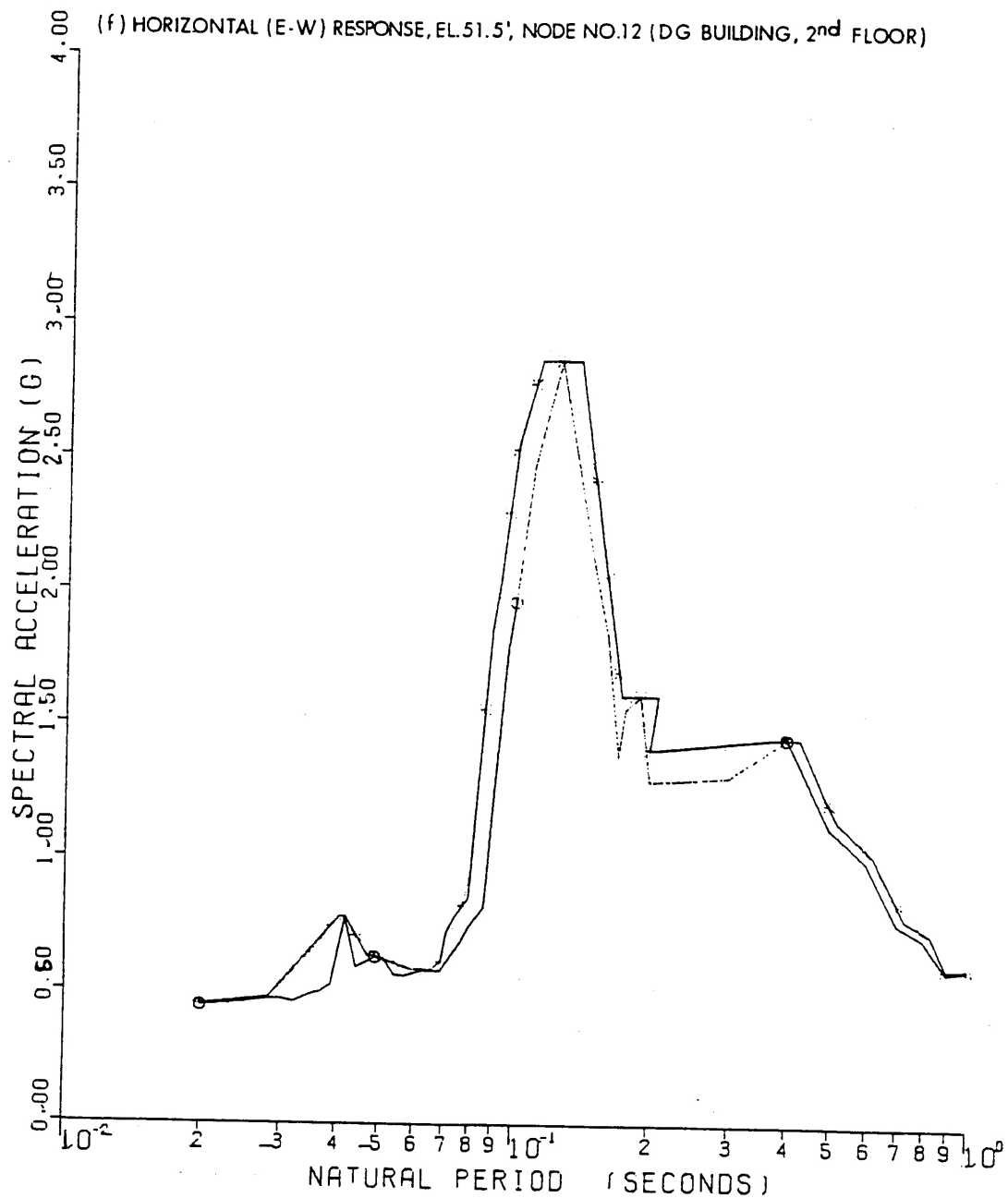


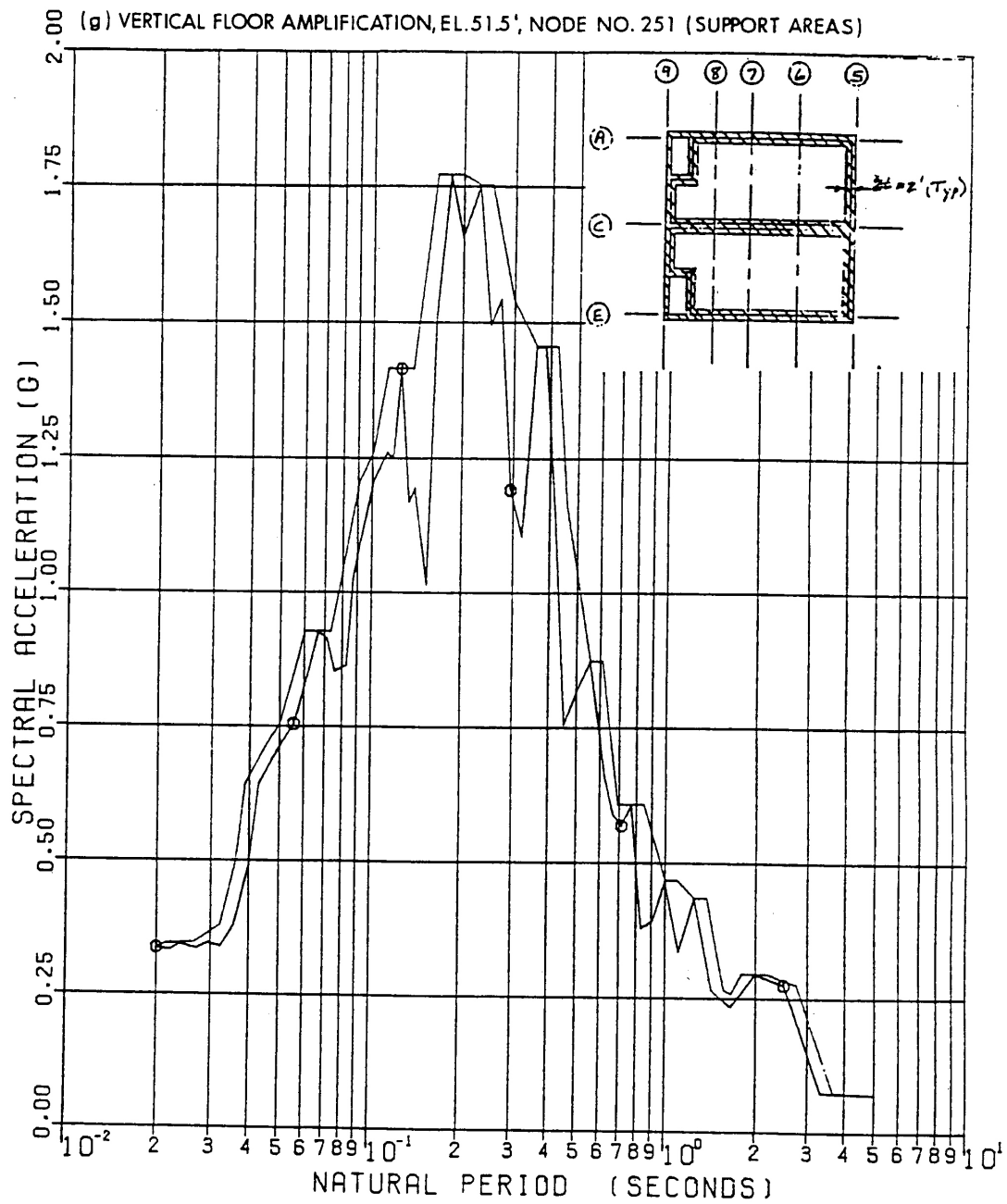
SEABROOK STATION UPDATED FINAL SAFETY ANALYSIS REPORT	Amplified Response Spectra - SSE - Control/Diesel Generator Building - 7% Structural Damping; 2% Equipment Damping [8 Sheets]	
	Figure 3.7(B)-28	Sh 2 of 8

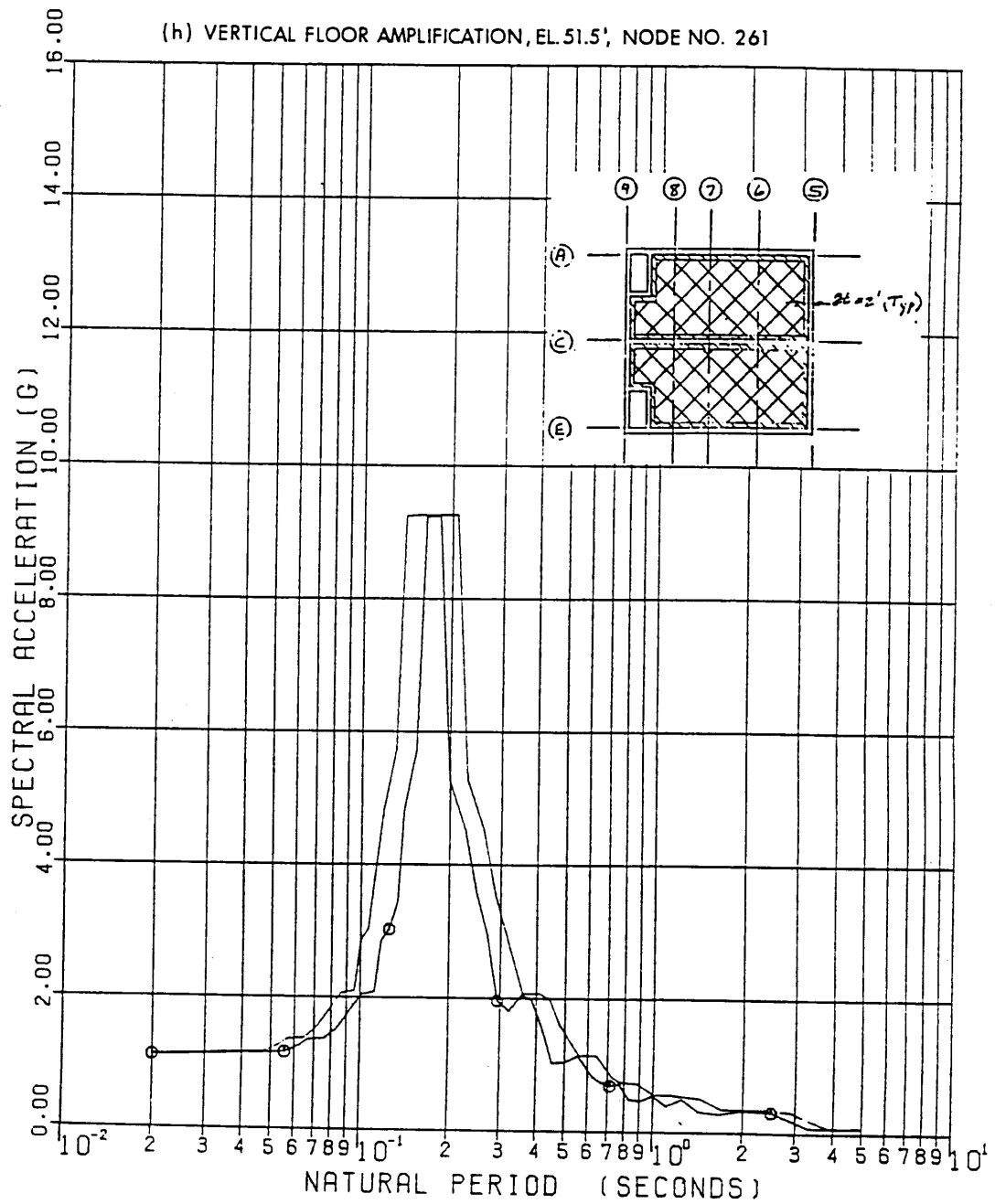


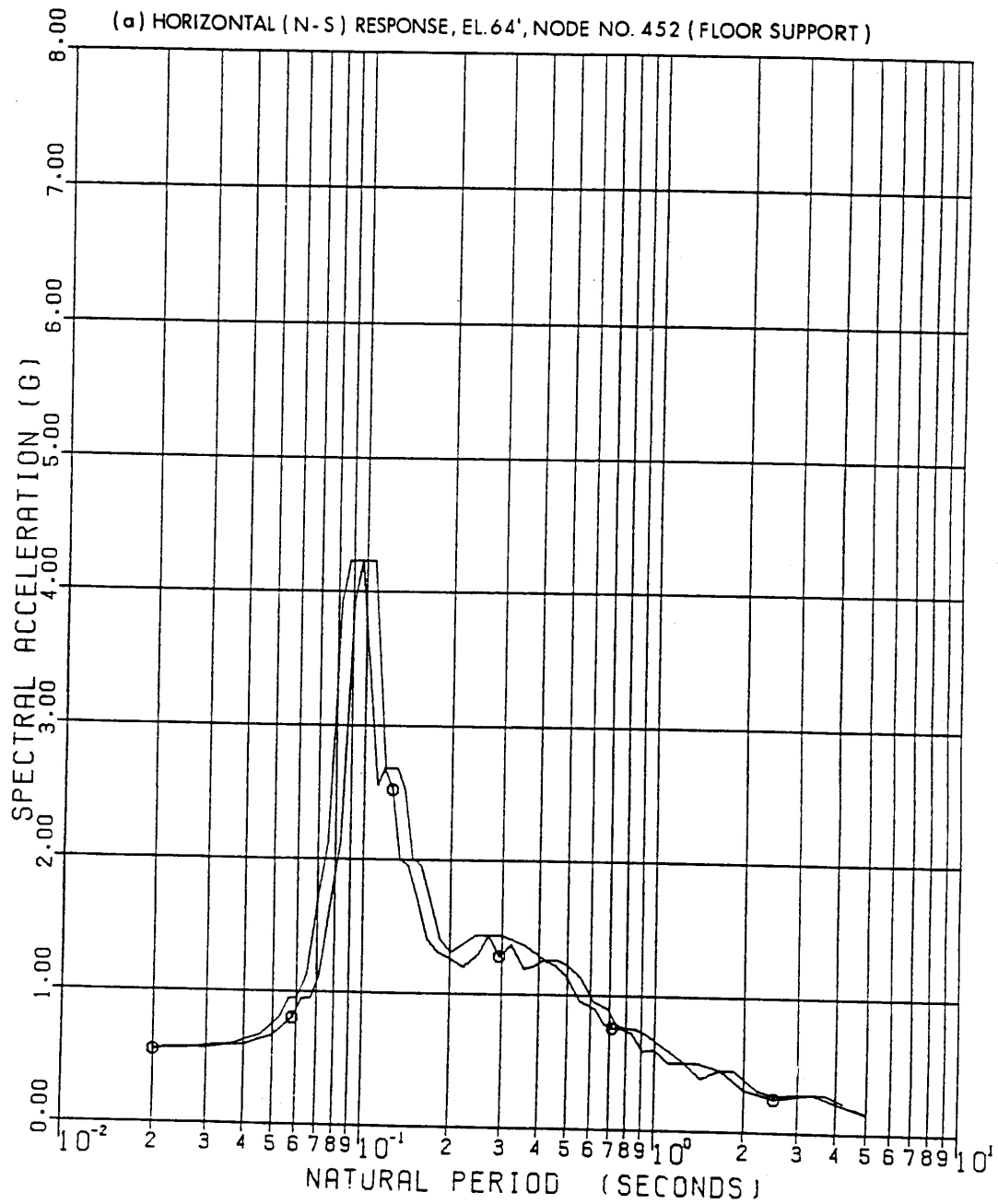


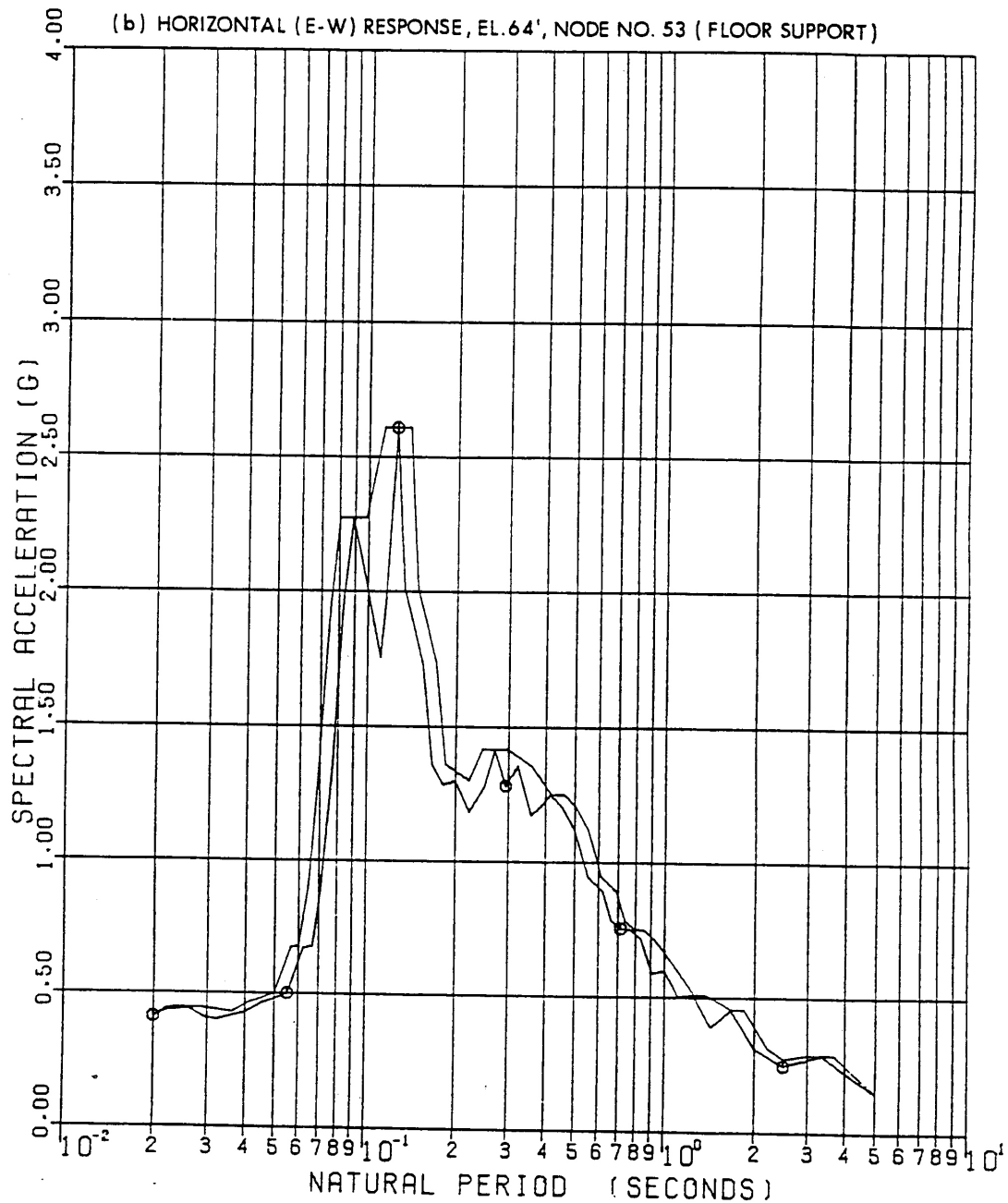


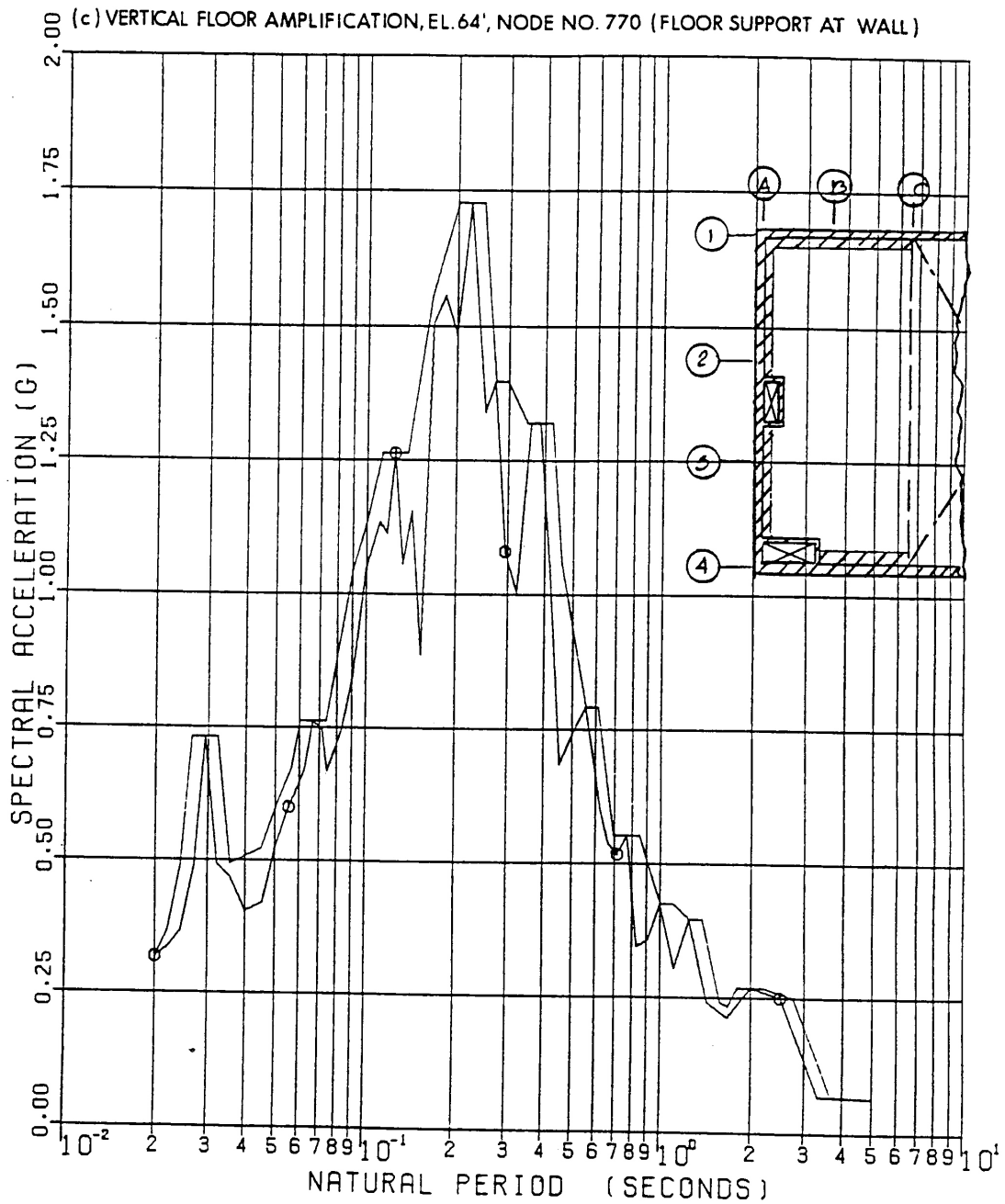


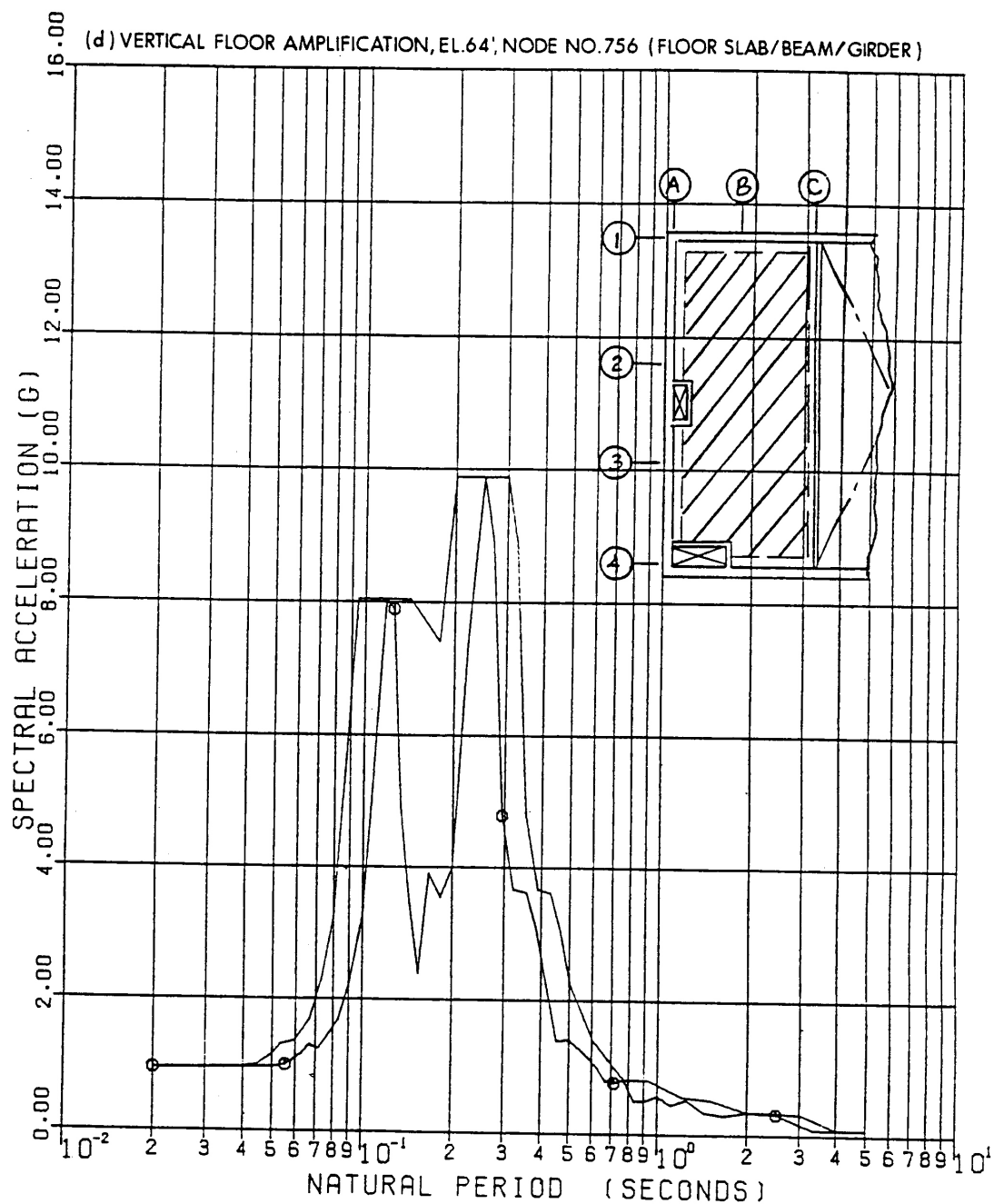


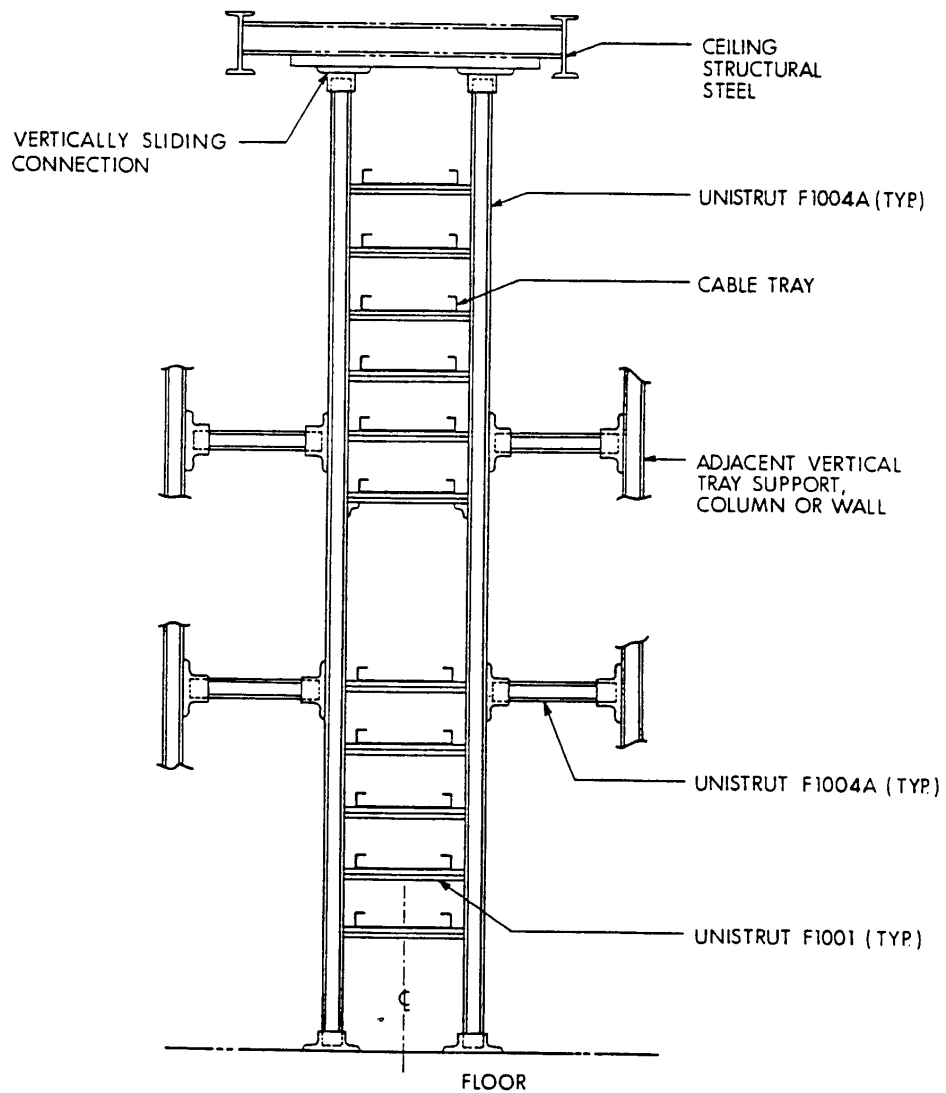


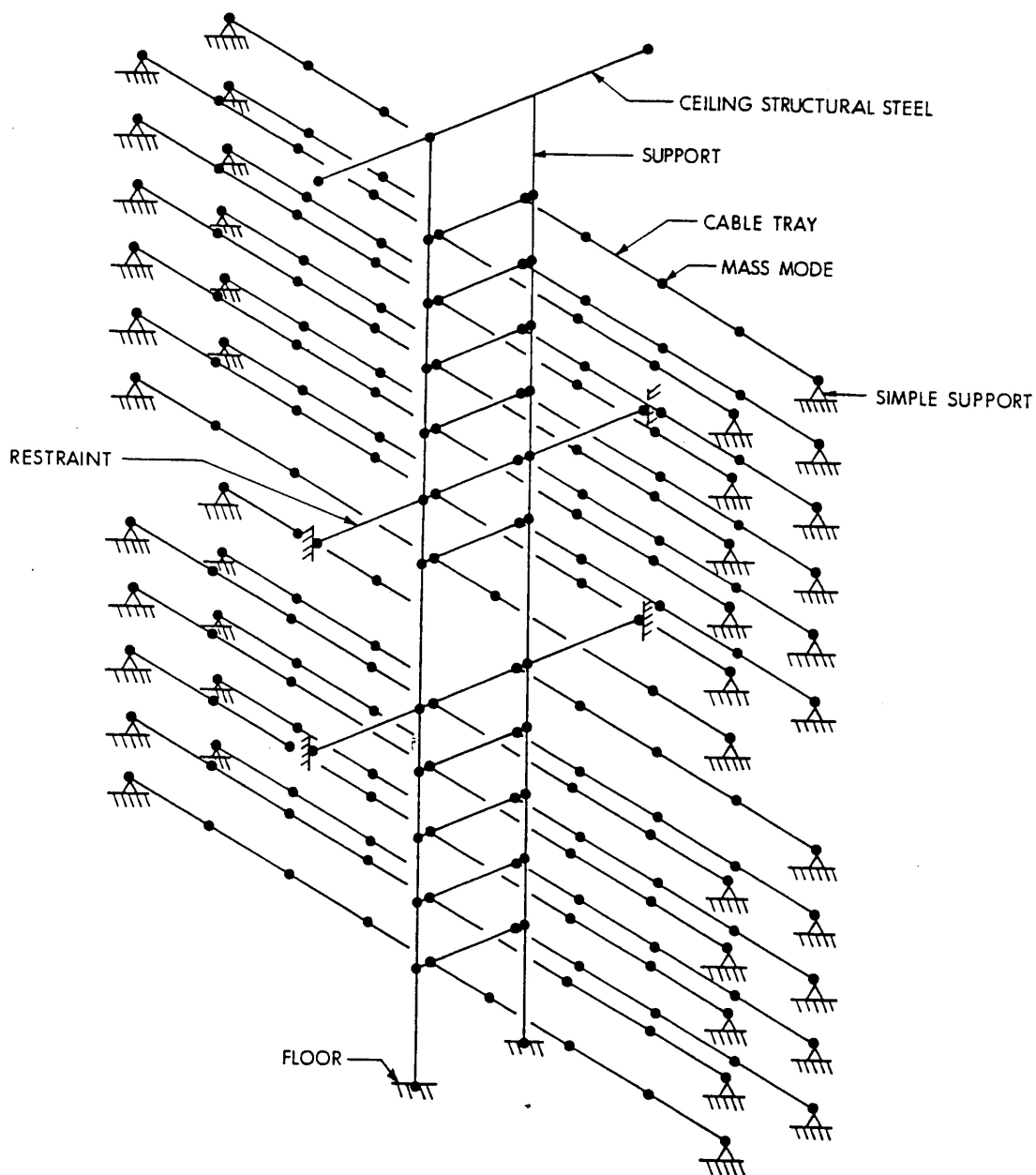


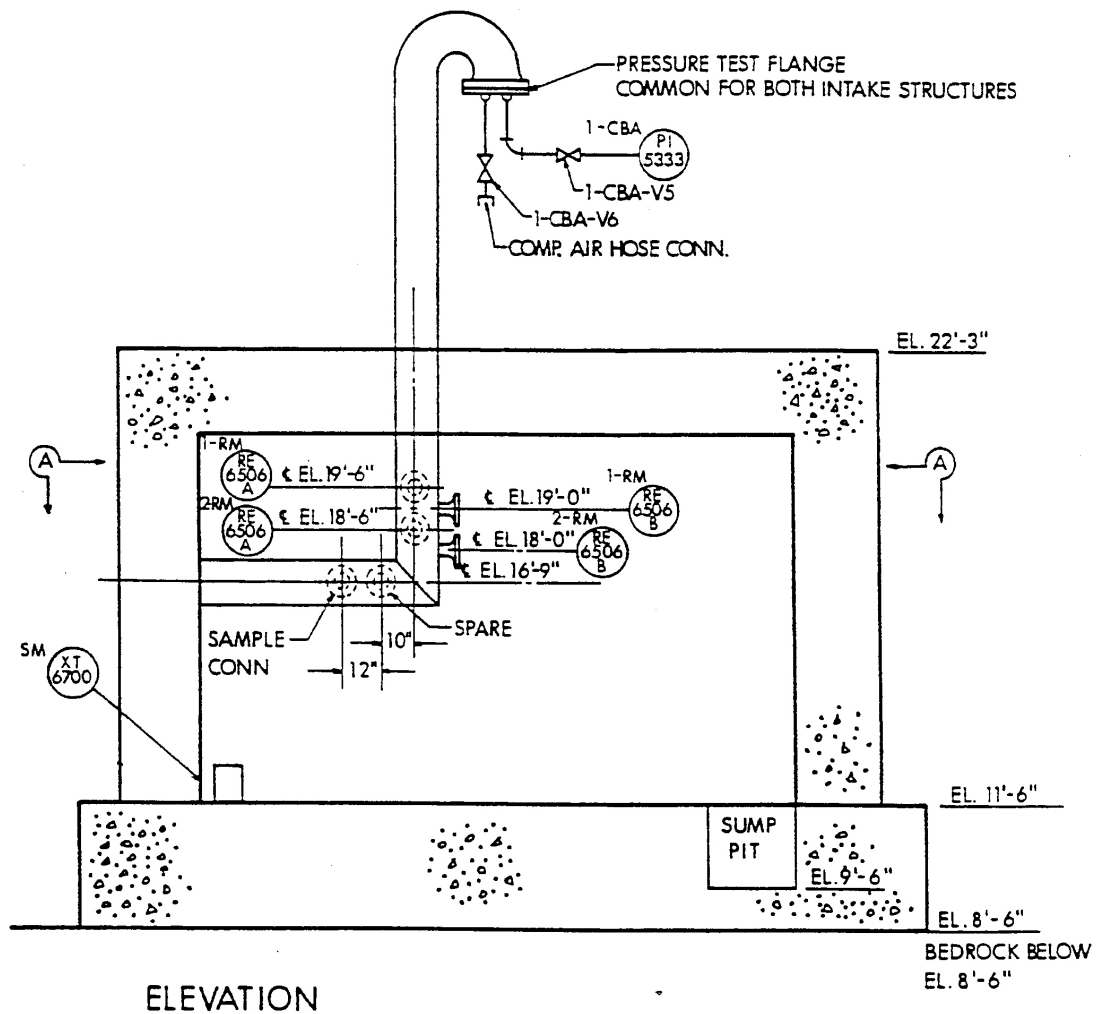






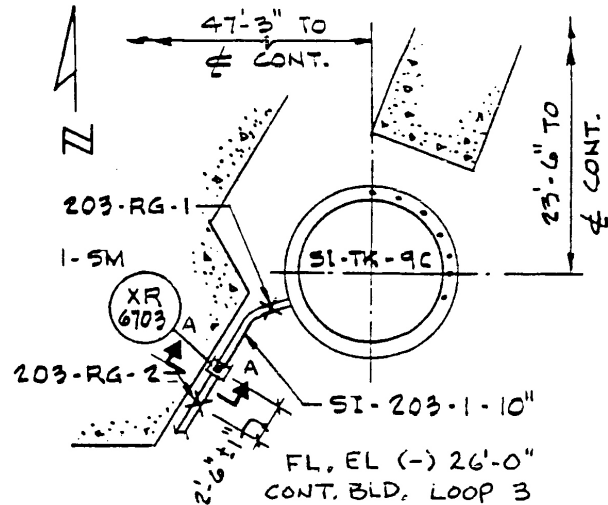






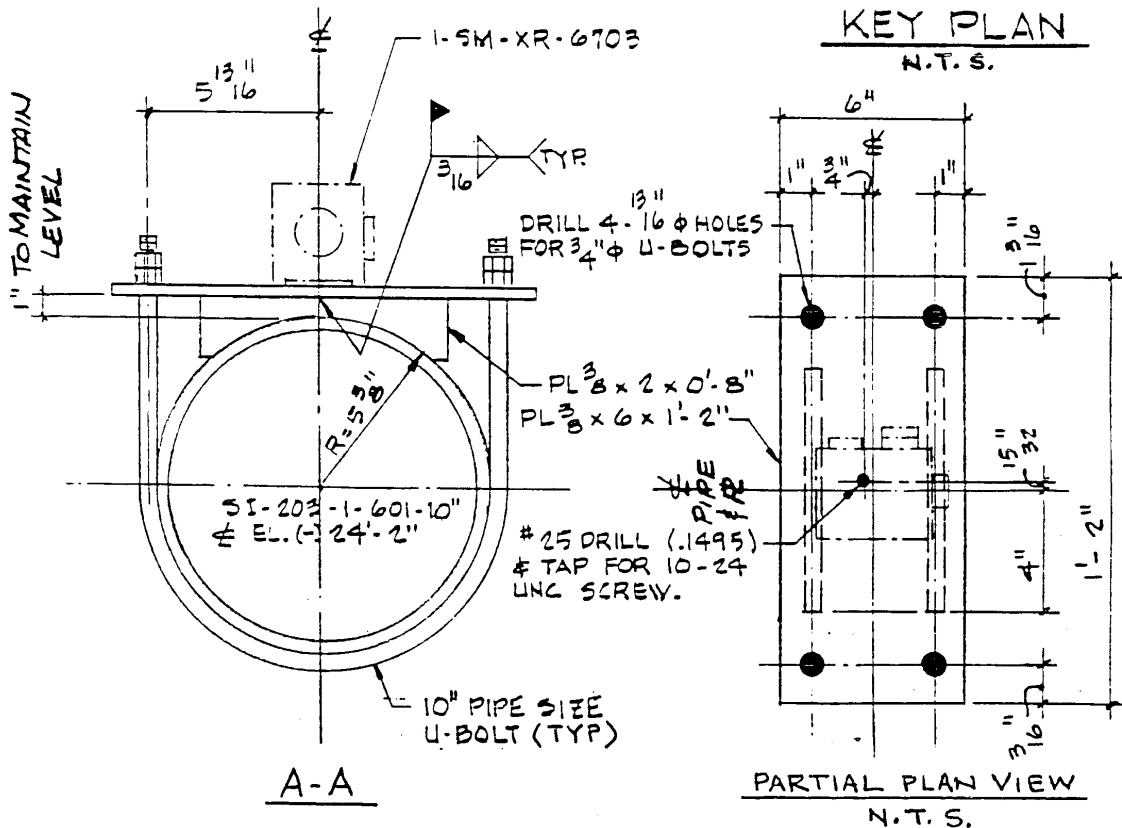
NOTES

1. TORQUE THE INST. MOUNTING SCREW TO 40 ± 10 IN-LBS
2. TORQUE U-BOLTS TO 80 FT-LBS ± 20
3. LEVEL MOUNTING PLATE WITHIN $1/4"$ ($1/64"$ IN $3/2"$).
4. EDGE OF MOUNTING PLATE TO BE PARALLEL WITH ϕ OF PIPE.
5. ALIGN LONG SIDE OF INSTRUMENT PARALLEL WITH THE EDGE OF MOUNTING PLATE WITHIN $3"$ ($1/4"$ IN $5"$).



KEY PLAN

N.T.S.

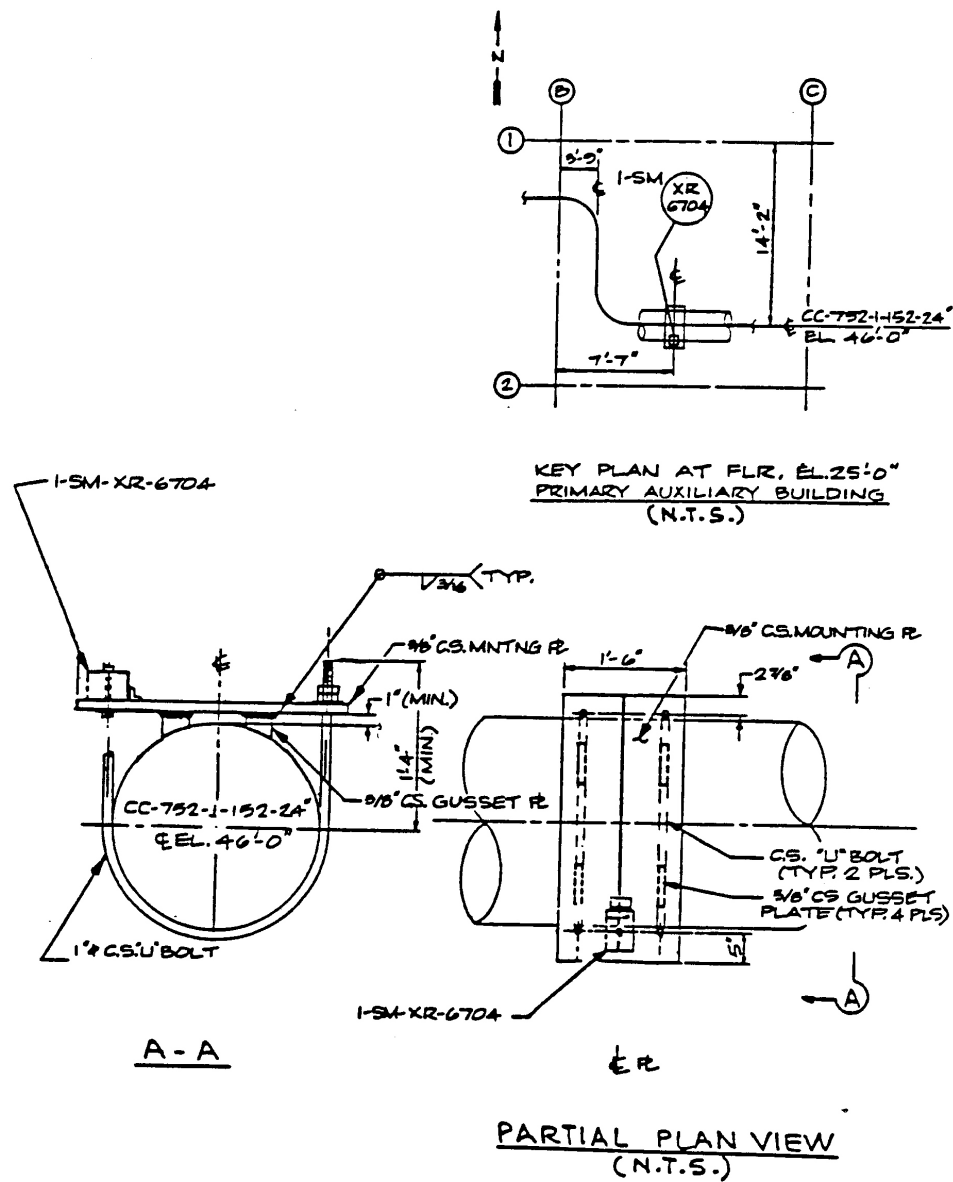


MOUNTING DETAIL

SEABROOK STATION
UPDATED FINAL SAFETY
ANALYSIS REPORT

Mounting Detail of Triaxial Peak Accelerograph, XR-6703,
on Safety Injection Piping (Line 203)

Figure 3.7(B)-33

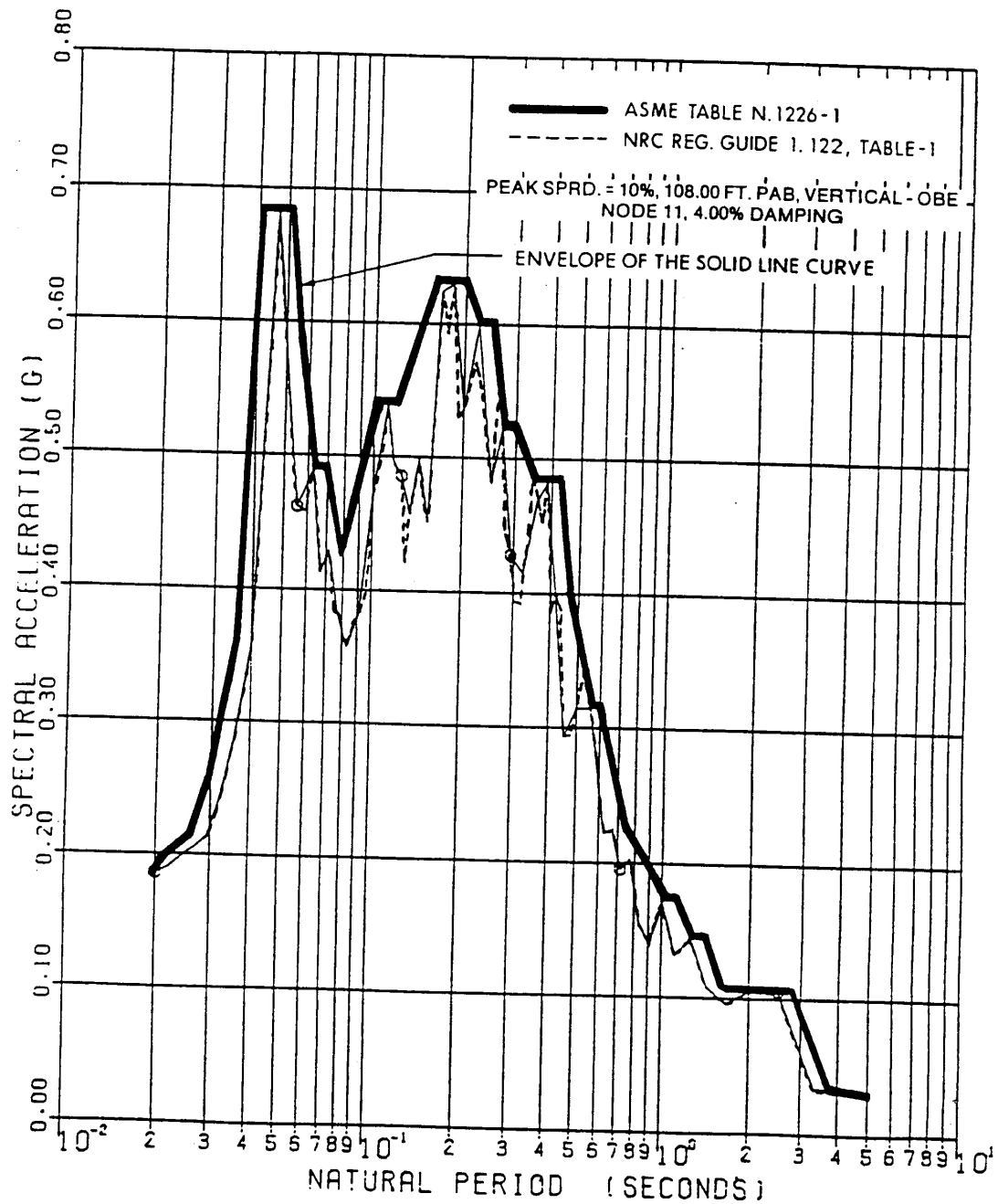


MOUNTING DETAIL

SEABROOK STATION
UPDATED FINAL SAFETY
ANALYSIS REPORT

Mounting Detail of Triaxial Peak Accelerograph, XR-6704,
on PCCW Piping

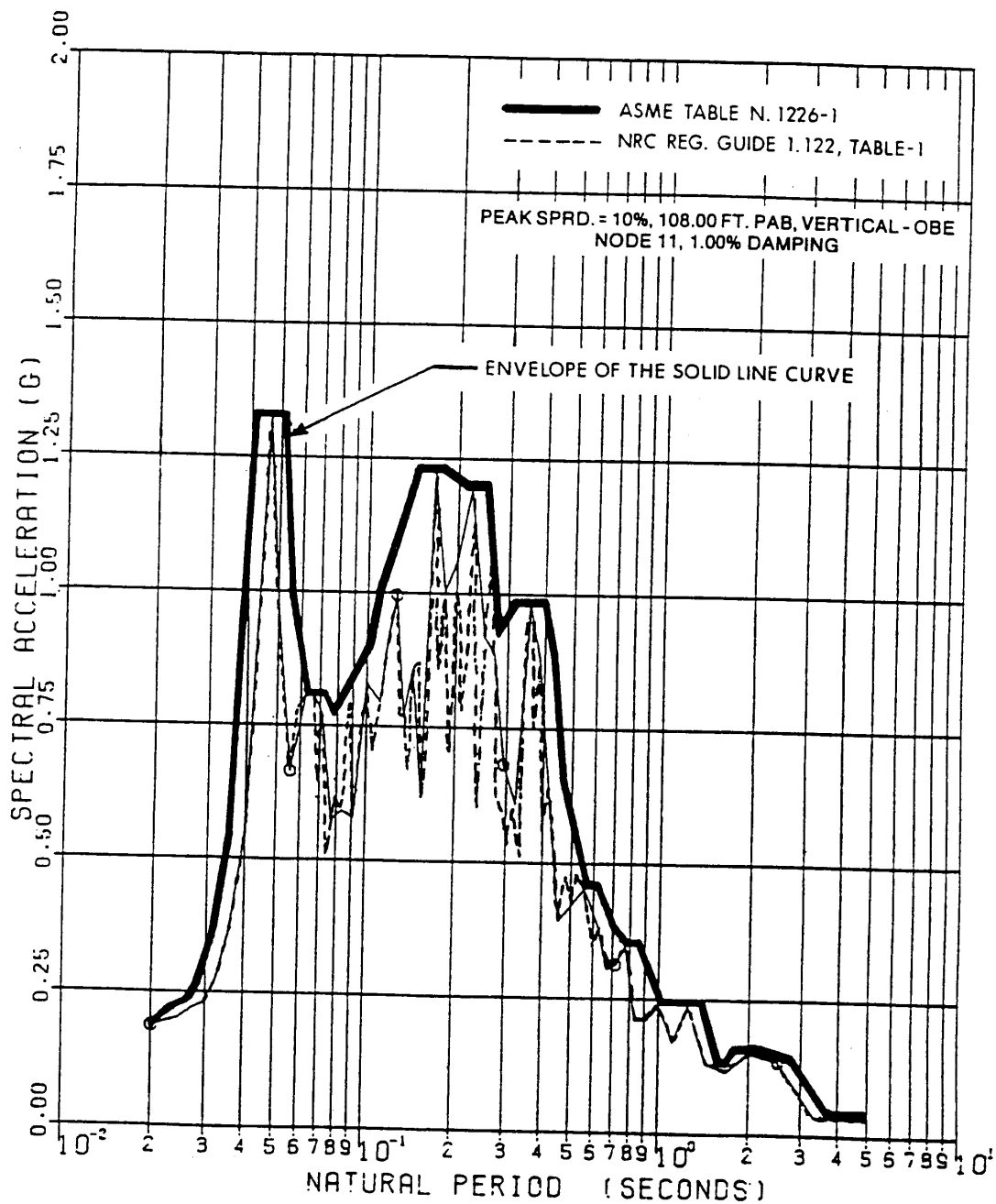
Figure 3.7(B)-34



SEABROOK STATION
 UPDATED FINAL SAFETY
 ANALYSIS REPORT

Primary Auxiliary Building Amplified Response Spectra
 (Vertical) OBE, 4% Damping

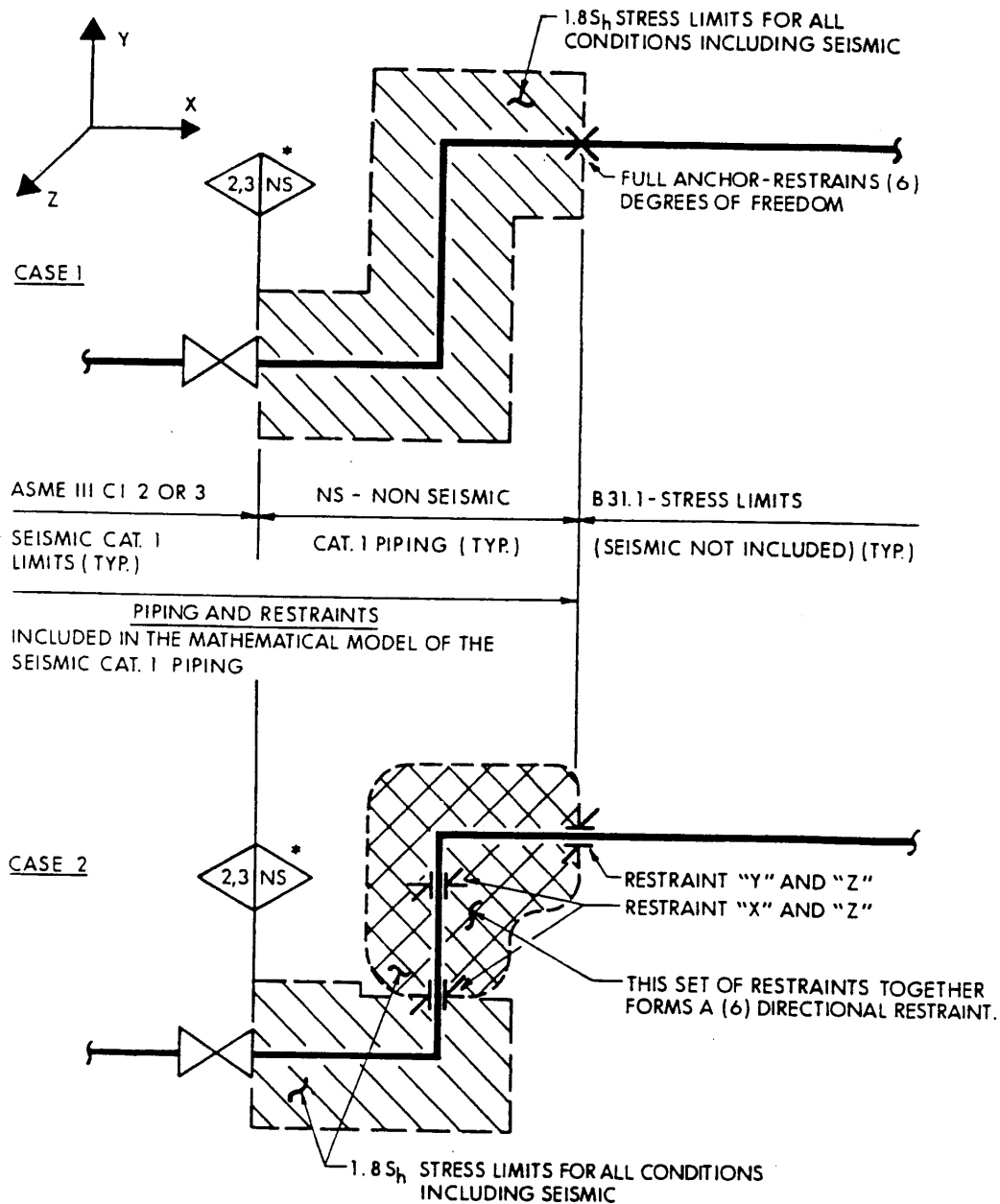
Figure 3.7(B)-35



SEABROOK STATION
UPDATED FINAL SAFETY
ANALYSIS REPORT

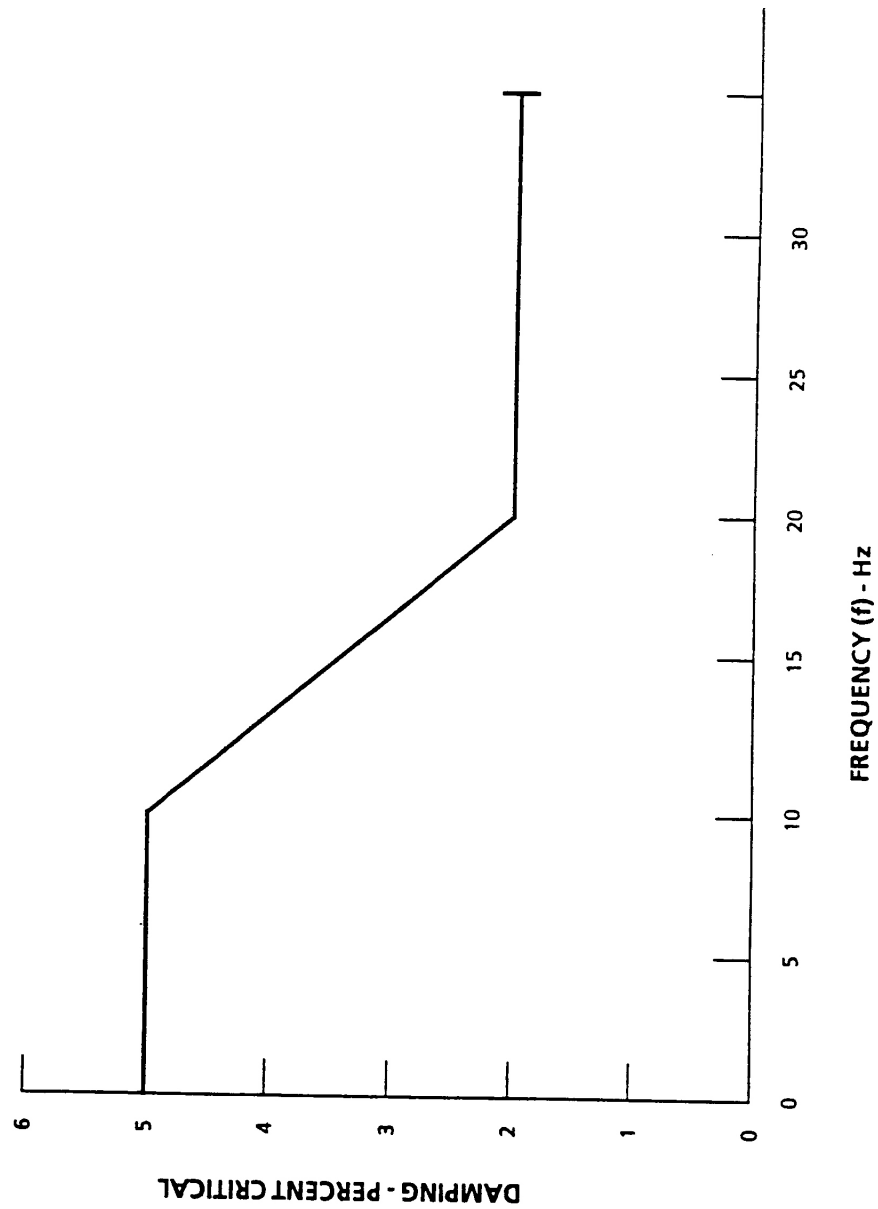
Primary Auxiliary Building Amplified Response Spectra
(Vertical) OBE, 1% Damping

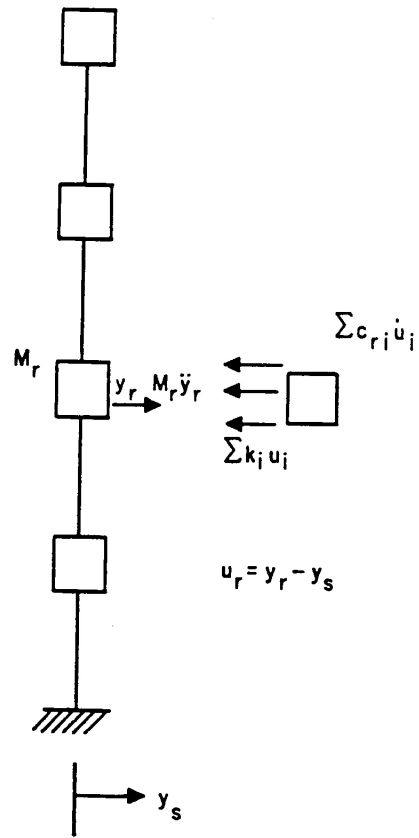
Figure 3.7(B)-36



* SYMBOL INDICATES BOUNDARY BETWEEN ASME III CLASS 2 OR 3 AND NON-SEISMIC PIPING.

SEABROOK STATION UPDATED FINAL SAFETY ANALYSIS REPORT	Typical Pipe Support Systems	
		Figure 3.7(B)-37





SEABROOK STATION UPDATED FINAL SAFETY ANALYSIS REPORT	Multi-Degree of Freedom System	
		Figure 3.7(N)-1