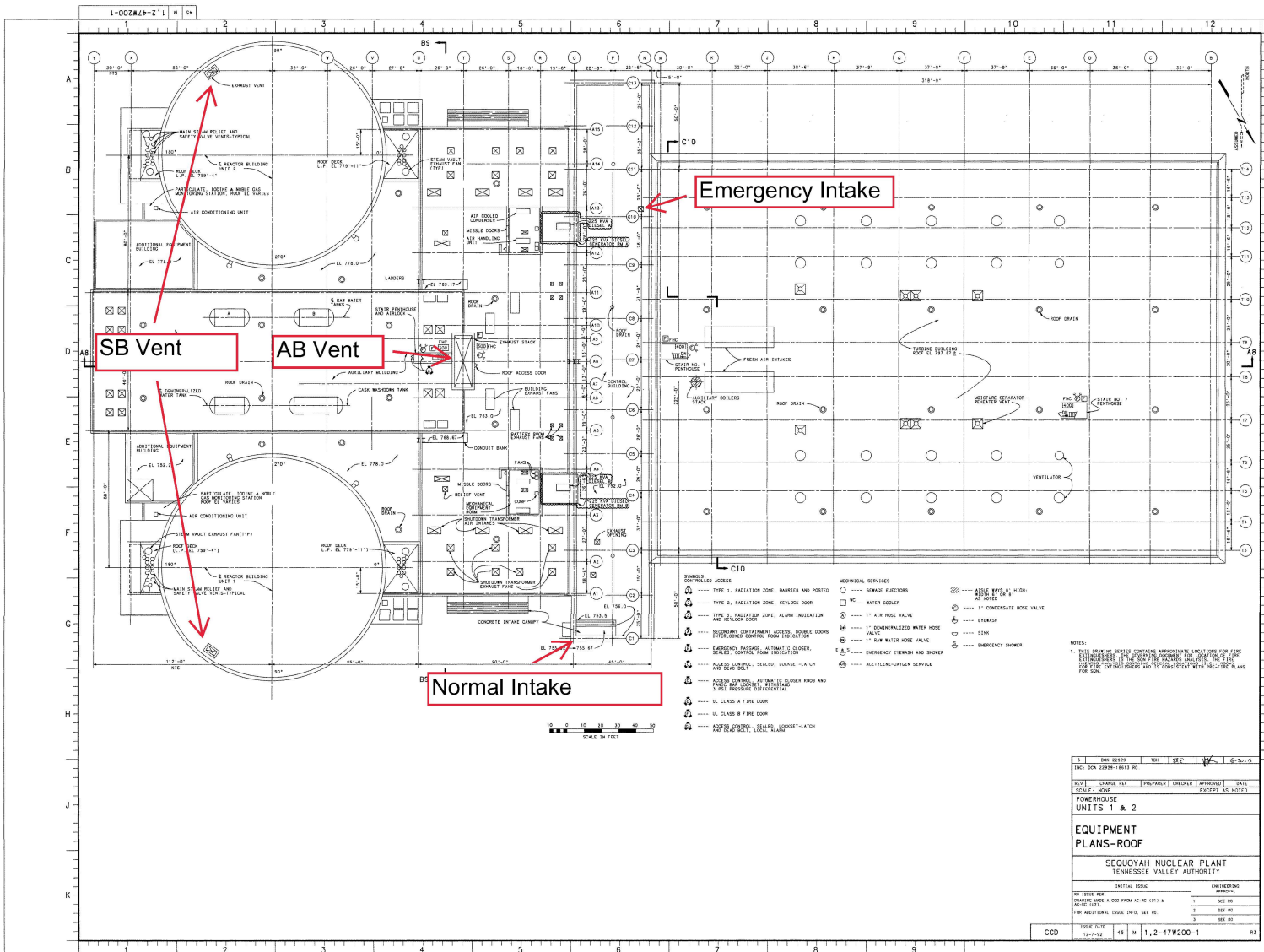


Enclosure 4
Marked-up Equipment Layout Drawings
for SQN Units 1 & 2
(2 pages)



Emergency Intake

SB Vent

AB Vent

Normal Intake

- DOORS**
- CONTROLLED ACCESS
 - TYPE 1, RADIATION ZONE, BARRIER AND POSTED
 - TYPE 2, RADIATION ZONE, KEYLOCK DOOR
 - TYPE 3, RADIATION ZONE, ALARM INDICATION AND LOCK DOOR
 - EMERGENCY CONTAINMENT ACCESS, CONCRETE DOORS
 - EMERGENCY CONTAINMENT, ROOM PROTECTION
 - EMERGENCY PASSAGE, AUTOMATICALLY CLOSING, SILENT, CONCRETE FRAME PROTECTION
 - SOLID SWINGING, SHIELDING, UNASSISTED/UNASSISTED
 - POWER OPERATED, SHIELDING, GLOVER HOOD AND FAST RELEASE PROTECTION
 - UL CLASS A FIRE DOOR
 - UL CLASS B FIRE DOOR
 - ACCESS DOOR, SHIELDING, LOCKSET-LATCH AND SHIELD UNIT, FRAME
- METHEORICAL SERVICES**
- SEWAGE EJECTORS
 - WATER COOLER
 - 1" AIR HOSE VALVE
 - 1" CONDENSATED WATER HOSE VALVE
 - 1" SWR BRICK HOSE VALVE
 - EMERGENCY EXTENSER AND SHOWER
 - MULTILEVEL-OUTLET SERVICE
- OTHER SERVICES**
- ATILE WALL, HIGH, NO NOTES OR A
 - 1" CONDENSATE HOSE VALVE
 - SINK
 - EMERGENCY SHOWER

NOTES:
 1. THIS DRAWING SHEET CONTAINS APPROXIMATE LOCATIONS FOR THE EXISTING EQUIPMENT. THE EXISTING EQUIPMENT IS TO BE REMOVED AND RELOCATED TO THE PLACE SHOWN ON THE DRAWING. THE EXISTING EQUIPMENT IS TO BE REMOVED AND RELOCATED TO THE PLACE SHOWN ON THE DRAWING.

NO.	ISSUE	DATE	BY	CHKD.	APP'D.	DATE
1	ISSUE	12-1-80	45	M	1, 2-47W200-1	R3

EQUIPMENT PLANS-ROOF

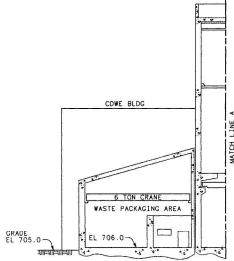
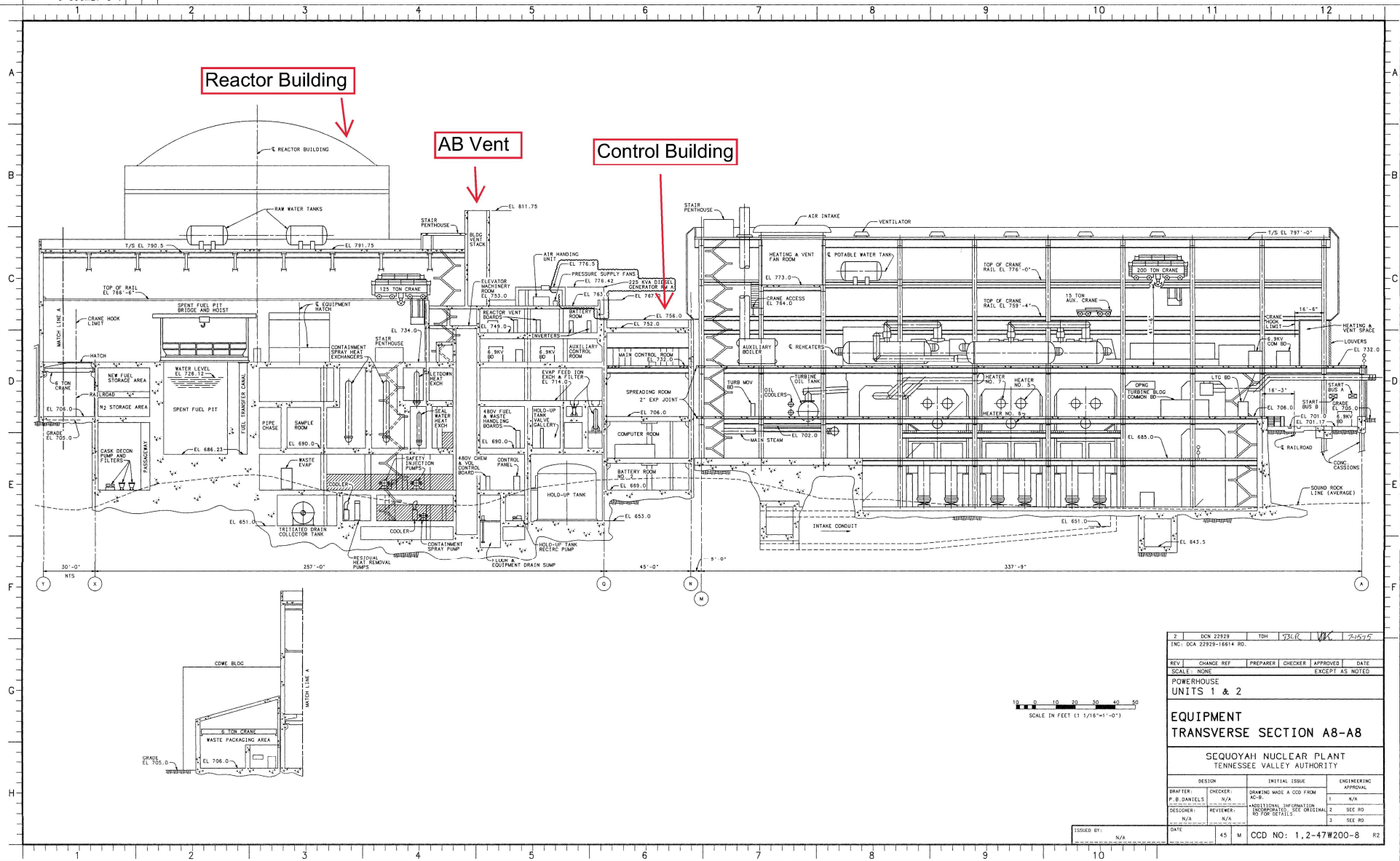
SEQUOYAH NUCLEAR PLANT
 TENNESSEE VALLEY AUTHORITY

INITIAL ISSUE ENGINEERING
 DATE: 12-1-80
 SCALE: AS SHOWN
 EXCEPT AS NOTED

Reactor Building

AB Vent

Control Building



2 DCN 2293		TDH	7/3/00	WJ	7/25/00
INC. DCA 2293-16614 RD.					
REV	CHANGE REF	PREPARED	CHECKER	APPROVED	DATE
SCALE	NONE				EXCEPT AS NOTED
POWERHOUSE UNITS 1 & 2					
EQUIPMENT TRANSVERSE SECTION A8-A8					
SEQUOYAH NUCLEAR PLANT TENNESSEE VALLEY AUTHORITY					
DESIGN	CHECKER	INITIAL ISSUE	AC-B	ENGINEERING	APPROVAL
P. B. DANIELS	N/A			1	N/A
DESIGNER	REVIEWER	ADDITIONAL INFORMATION	INCORPORATED	2	SEE RD
N/A	N/A			3	SEE RD
ISSUED BY:	N/A	DATE	45	M	CCD NO: 1, 2-47W200-8 R2

CAD MAINTAINED DRAWING