





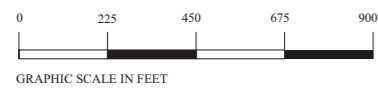
Amendment 110

**LEGEND**

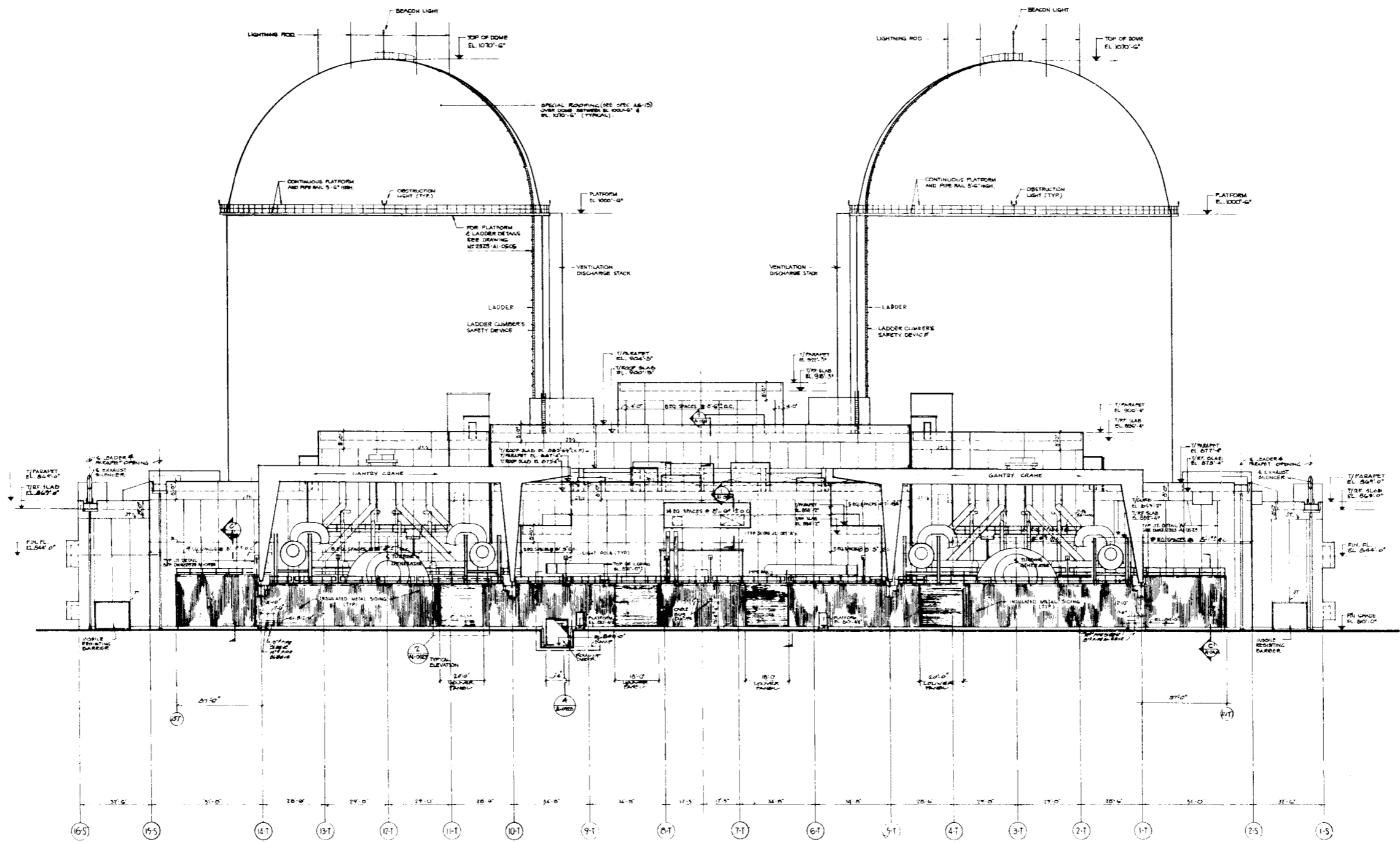
LINE CODES:	
	FENCE
	RAILROAD
	PLANT STRUCTURES
	ROADS OR PAVED AREAS

**GENERAL NOTES:**

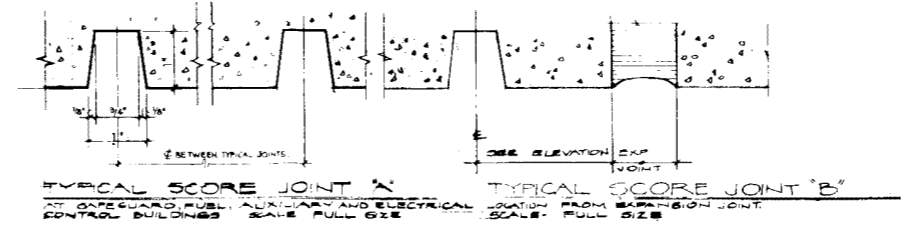
1. AT INTERSECTION OF N S & E W BASE LINES,  
TEXAS STATE GRID COORDINATE N 230,220;  
E 1,911,370 EQUALS PLANT COORDINATE  
N 10,000; E 10,000.



COMANCHE PEAK N P P FINAL SAFETY ANALYSIS REPORT UNITS 1 AND 2	
PLOT PLAN	
FIGURE	FIGURE 1.2-1

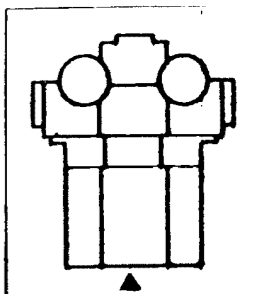


WEST ELEVATION scale 1/8"=1'-0"



DWG. No 2323-A1-0523  
REV. 5

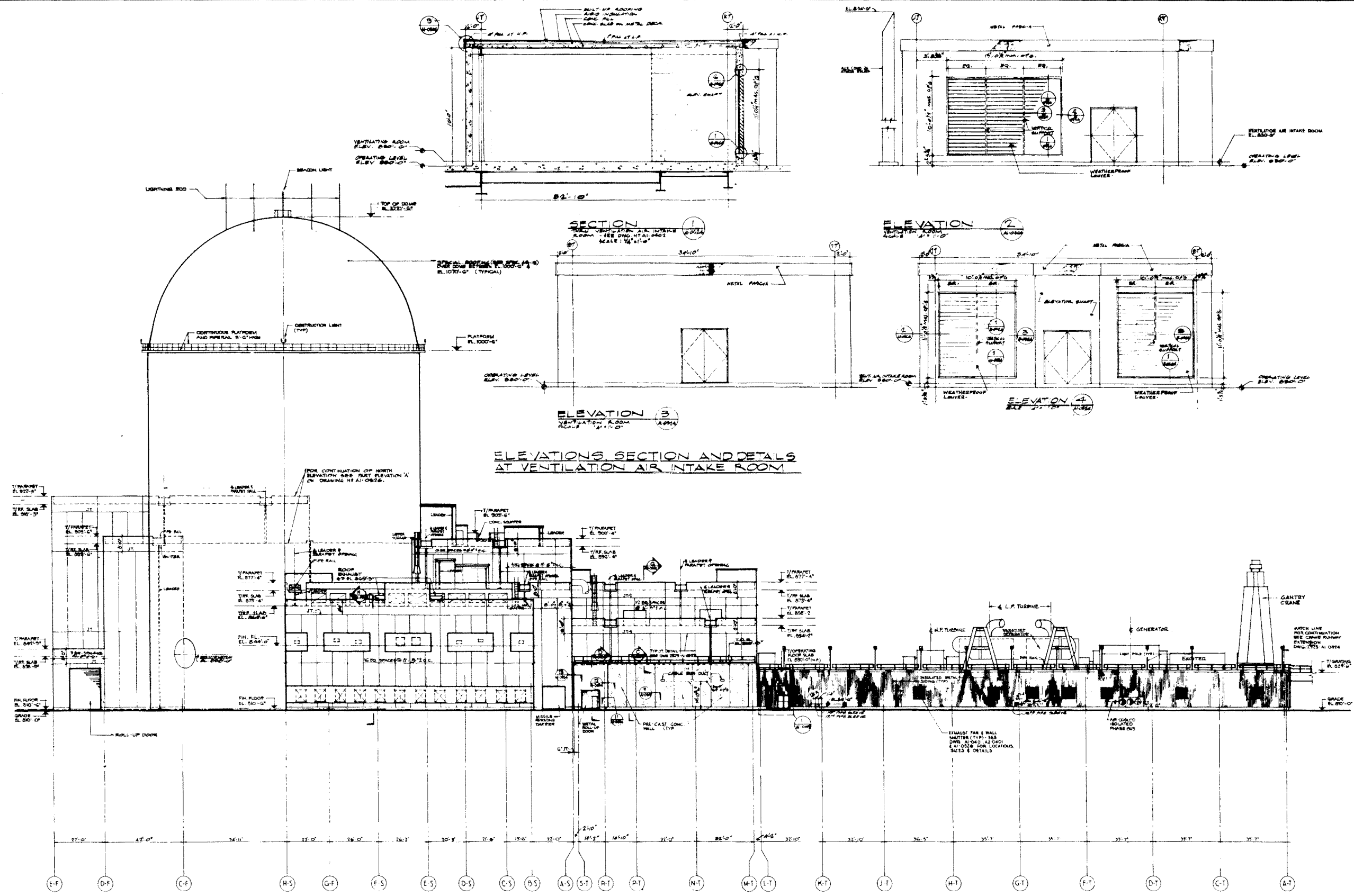
AMENDMENT 10  
MARCH 31, 1980



COMANCHE PEAK S.E.S.  
FINAL SAFETY ANALYSIS REPORT  
UNITS 1 and 2

WEST ELEVATION

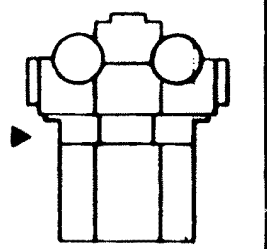
FIGURE No. 1-2-2



ELEVATIONS SECTION AND DETAILS  
AT VENTILATION AIR INTAKE ROOM

DWG. No 2323-A1-0524  
REV. 5

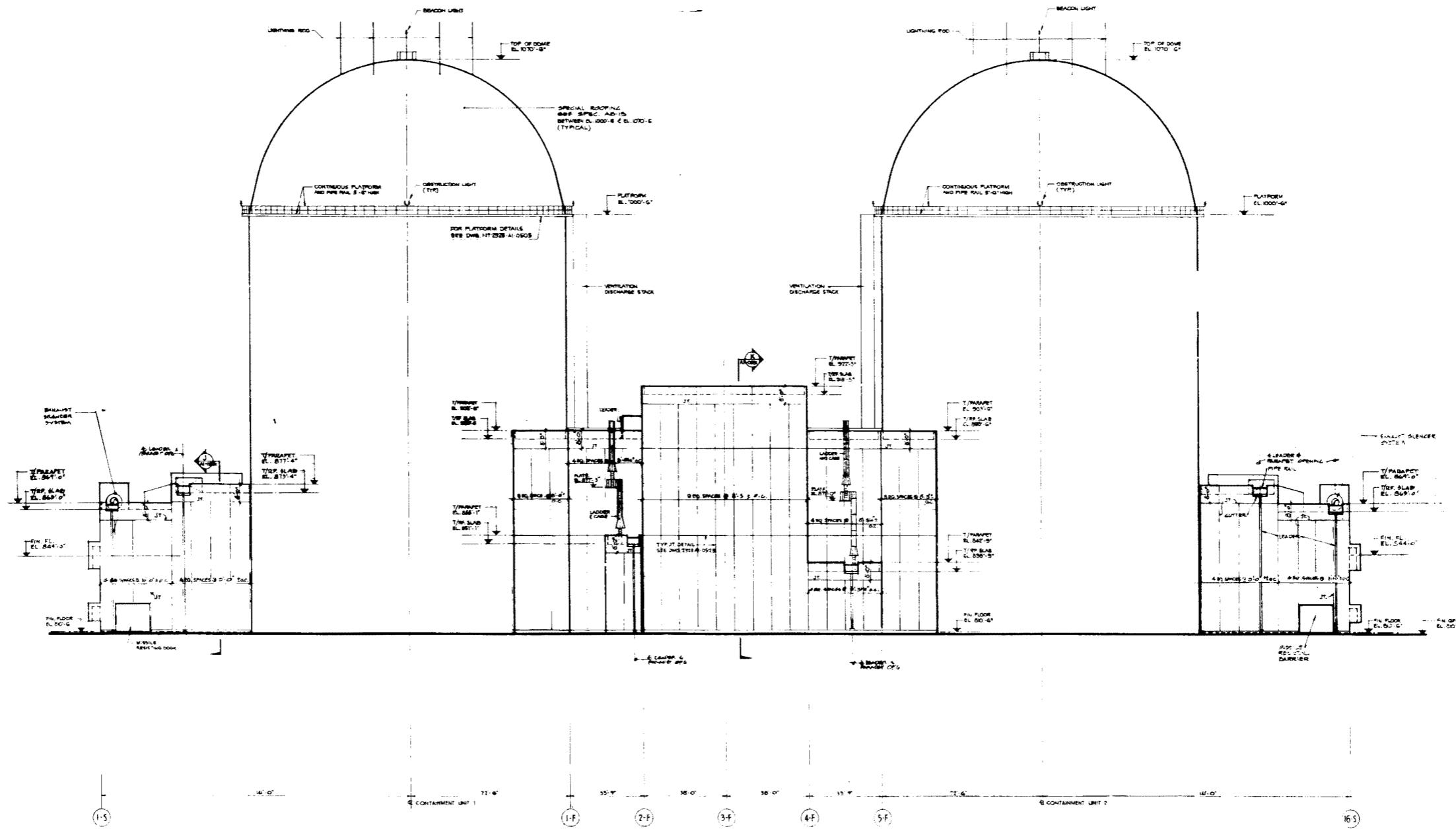
AMENDMENT 10  
MARCH 31, 1980



COMANCHE PEAK S.E.S.  
FINAL SAFETY ANALYSIS REPORT  
UNITS 1 and 2

NORTH ELEVATION

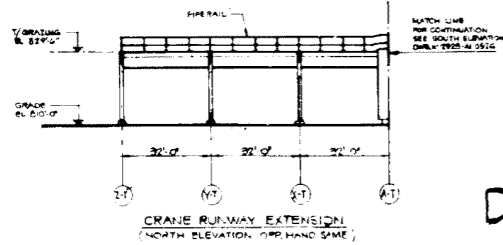
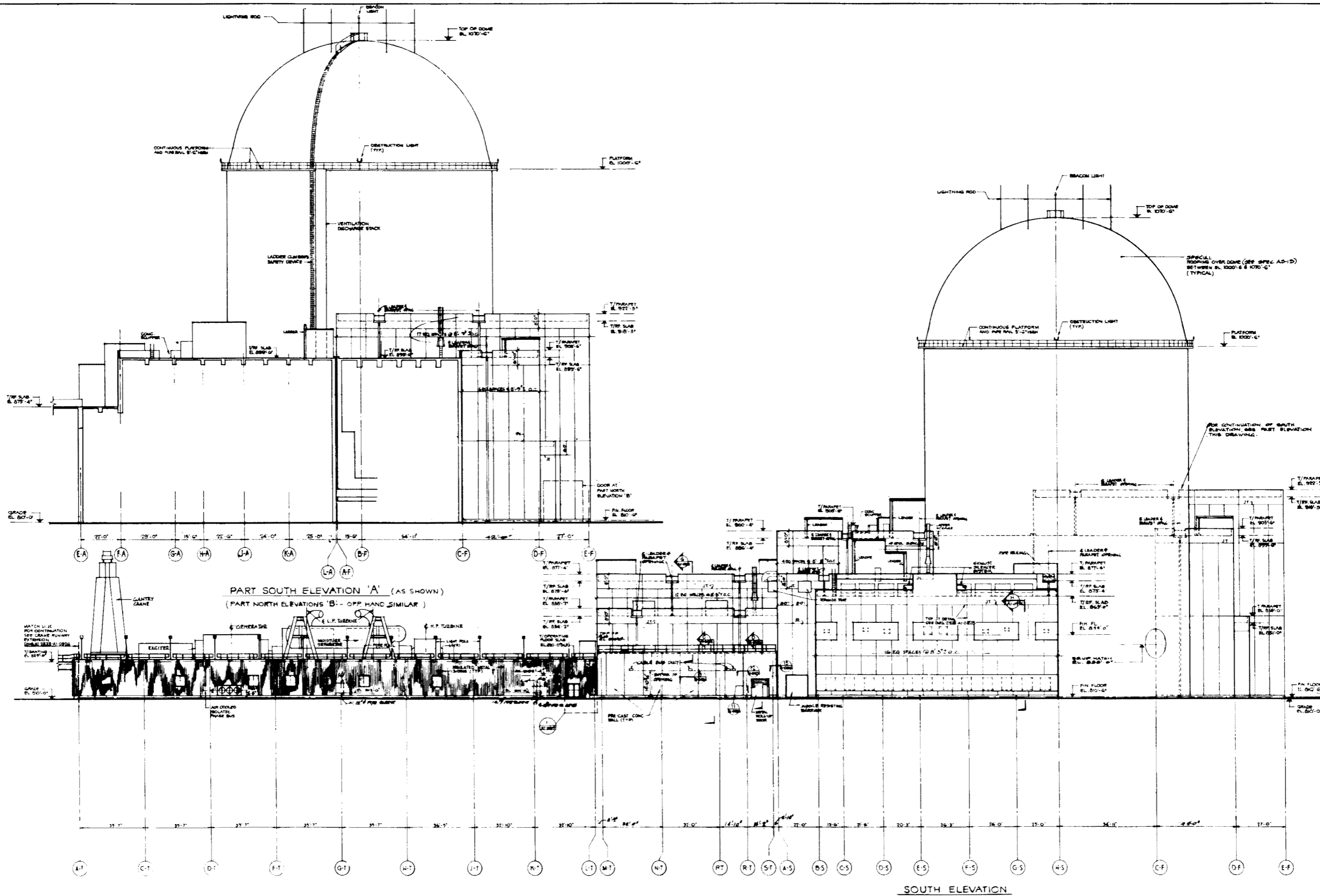
FIGURE N° 1.2-5



DWG. NO 2323-A1-0525  
 REV. NO 4

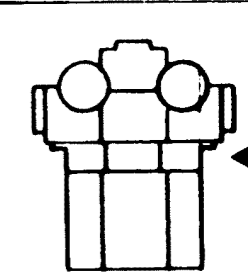
AMENDMENT 10  
 MARCH 31, 1980

<p>COMANCHE PEAK S.E.S.        FINAL SAFETY ANALYSIS REPORT        UNITS 1 and 2</p>
<p>EAST ELEVATION</p>
<p>FIGURE # 1.2-4</p>



DIV. No 2323-A1-0526 REV. 5

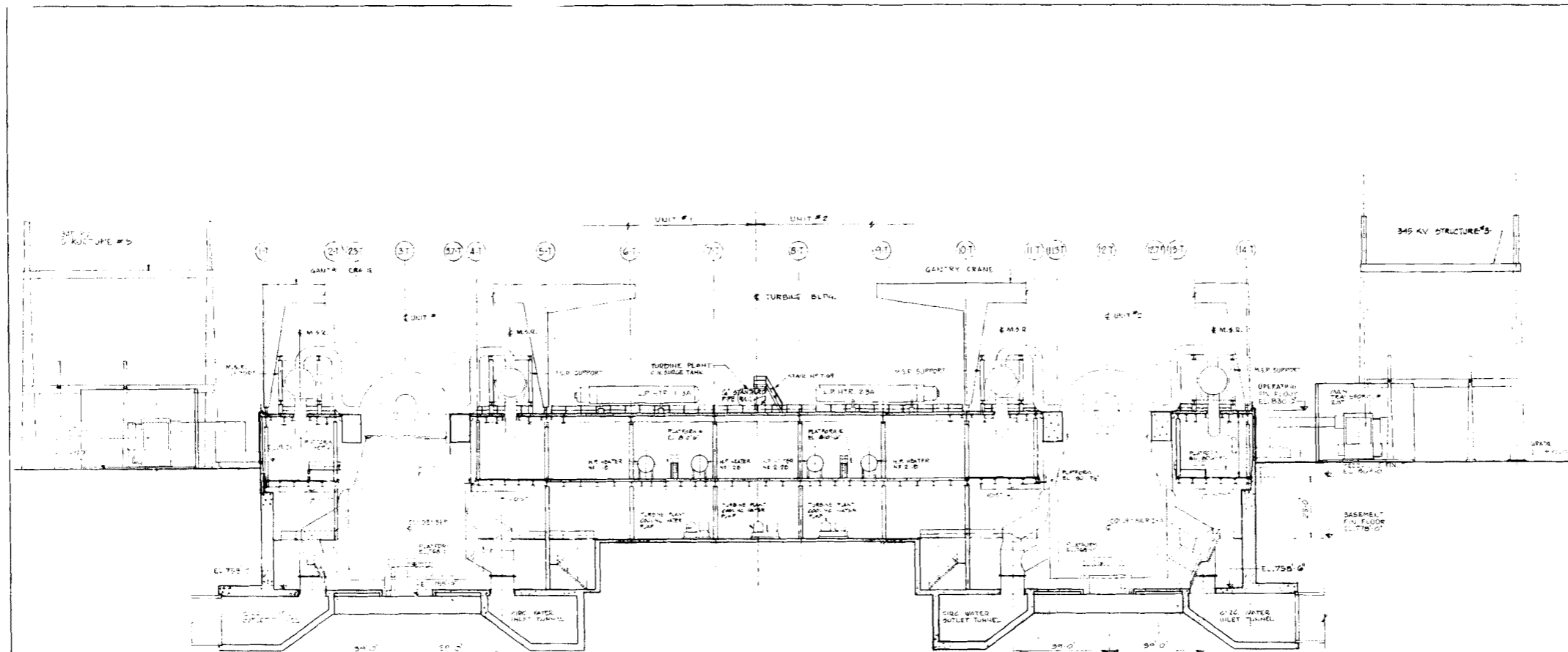
AMENDMENT 10  
MARCH 31, 1980



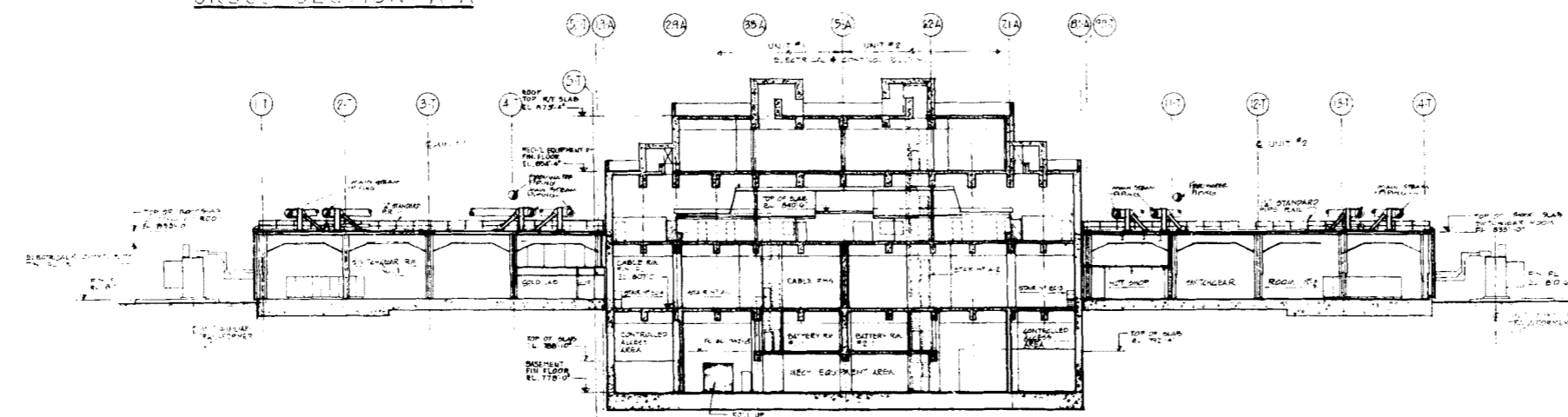
COMANCHE PEAK S.E.S.  
FINAL SAFETY ANALYSIS REPORT  
UNITS 1 and 2

SOUTH AND PART  
ELEVATIONS

FIGURE No 1.2-5



CROSS-SECTION A-A

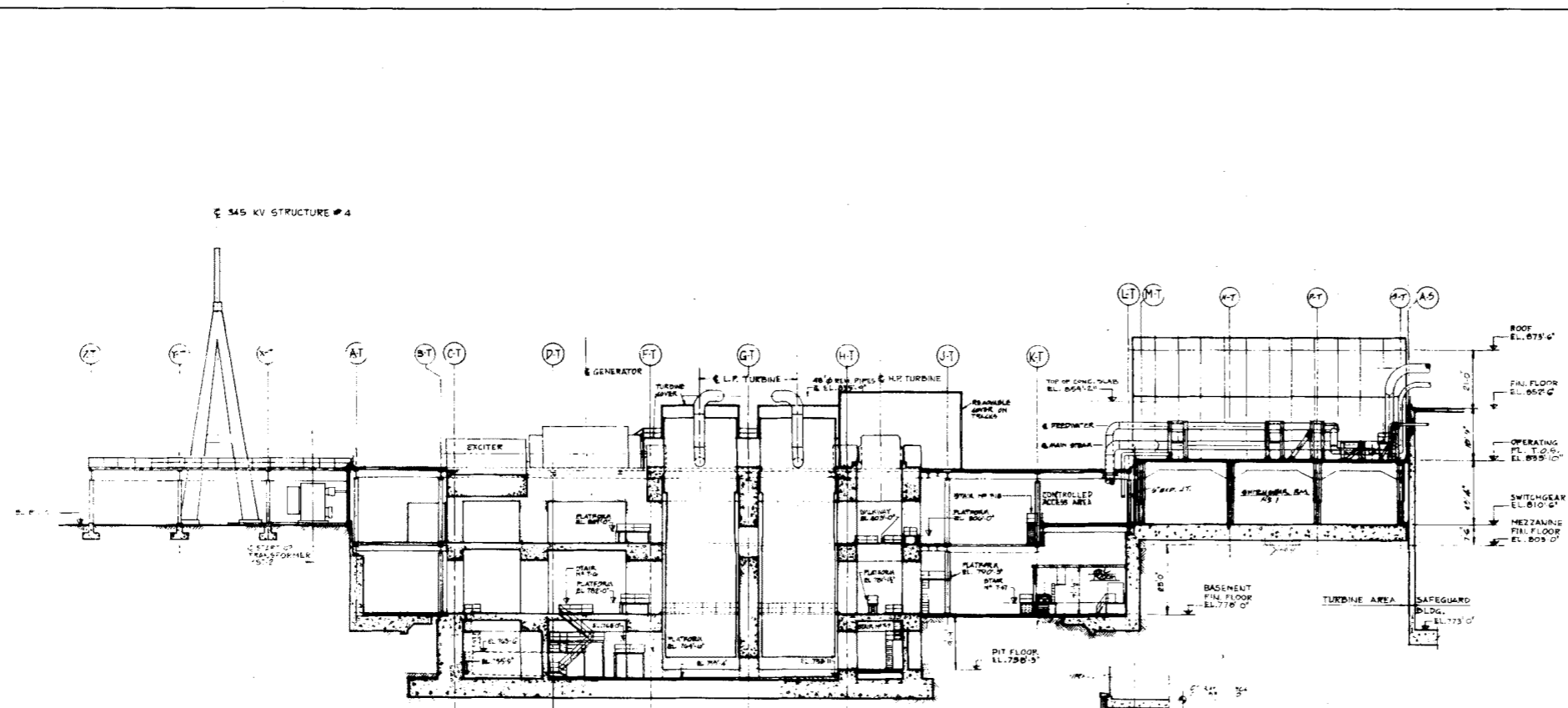


CROSS-SECTION B-B

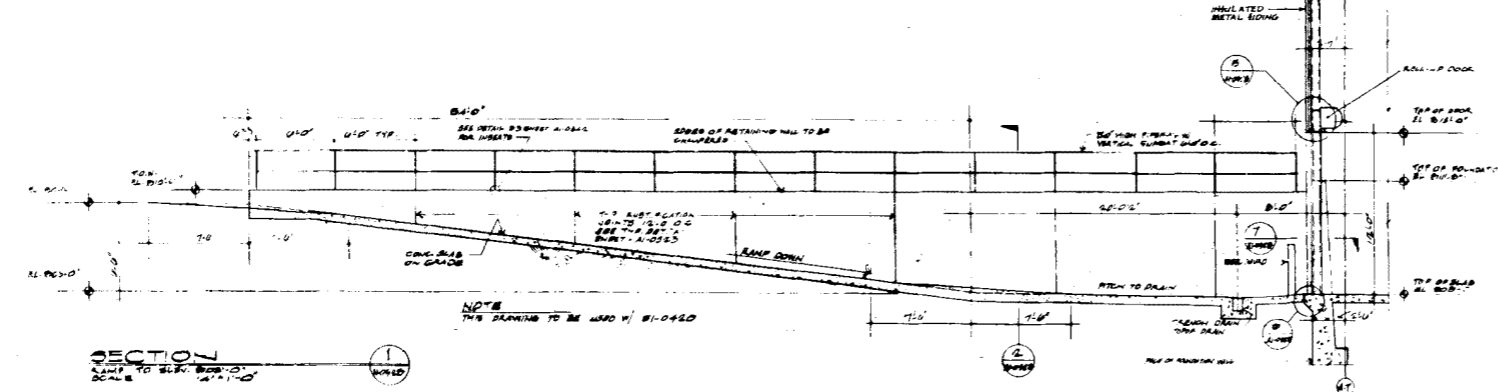
DWG. No 2323-A1-0527  
REV. No 6

AMENDMENT 10  
MARCH 31, 1980

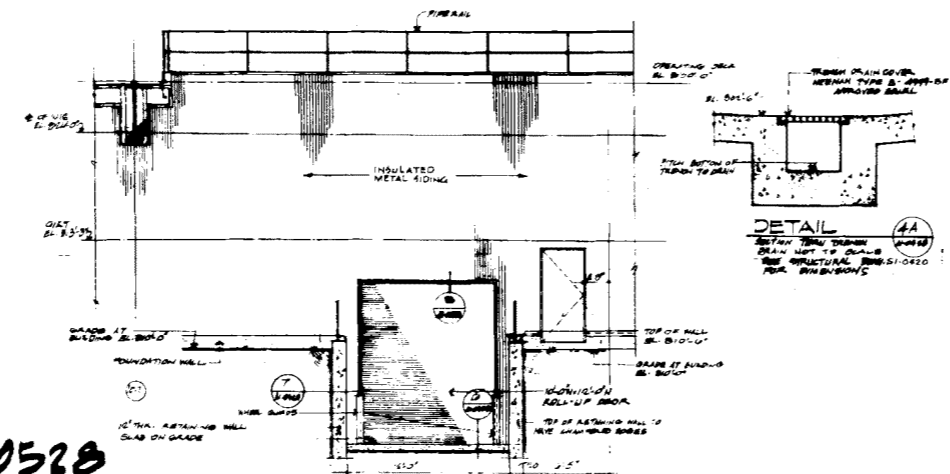
COMANCHE PEAK S.E.S. FINAL SAFETY ANALYSIS REPORT UNITS 1 and 2
BUILDING CROSS-SECTIONS A-A, B-B
FIGURE No 17-G



CROSS-SECTION C-C



SECTION C-C TO EL. 809' 0" SCALE 1/8" = 1'-0"



ELEVATION C-C TO EL. 809' 0" SCALE 1/8" = 1'-0"

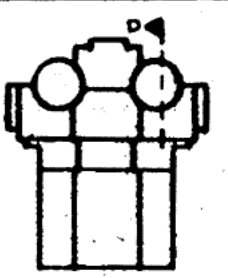
DWG. No 2325-A1-0528  
REV. No 6

AMENDMENT 10  
MARCH 31, 1980

<p>COMANCHE PEAK S.E.S. FINAL SAFETY ANALYSIS REPORT UNITS 1 and 2</p>
<p>BUILDING CROSS-SECTION C-C</p>
<p>FIGURE No 12-7</p>

Information Withheld in Accordance with 10 CFR 2.390

CROSS-SECTION 'D-D'

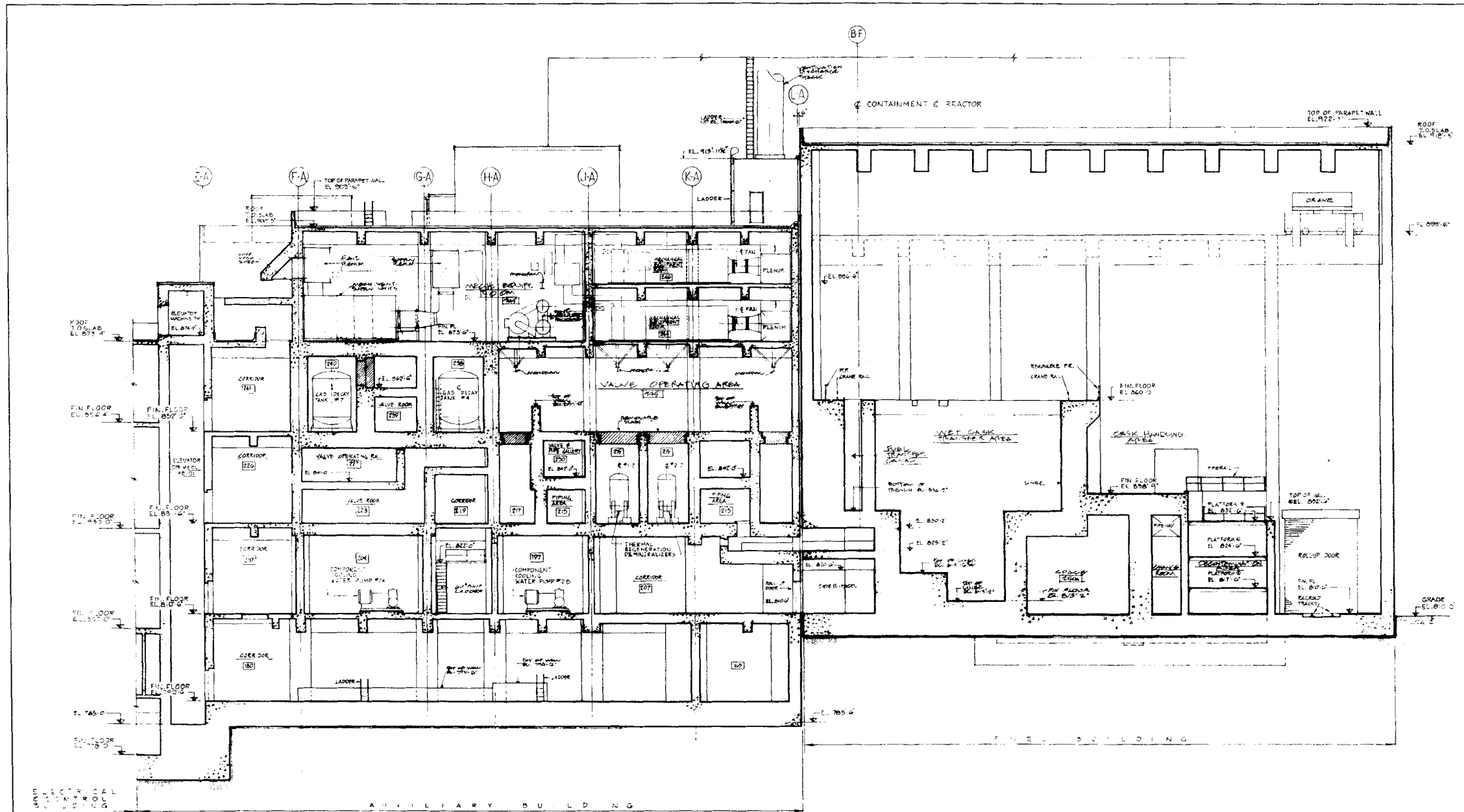


COMANCHE PEAK S.E.S.  
FINAL SAFETY ANALYSIS REPORT  
UNITS 1 and 2

BUILDING CROSS-SECTION  
D-D

FIGURE # 1.2-0

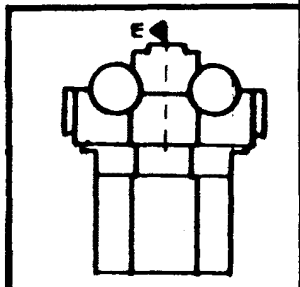




CROSS-SECTION 'E-E'

DWG. No 2323-AI-0530  
 REV. No 5

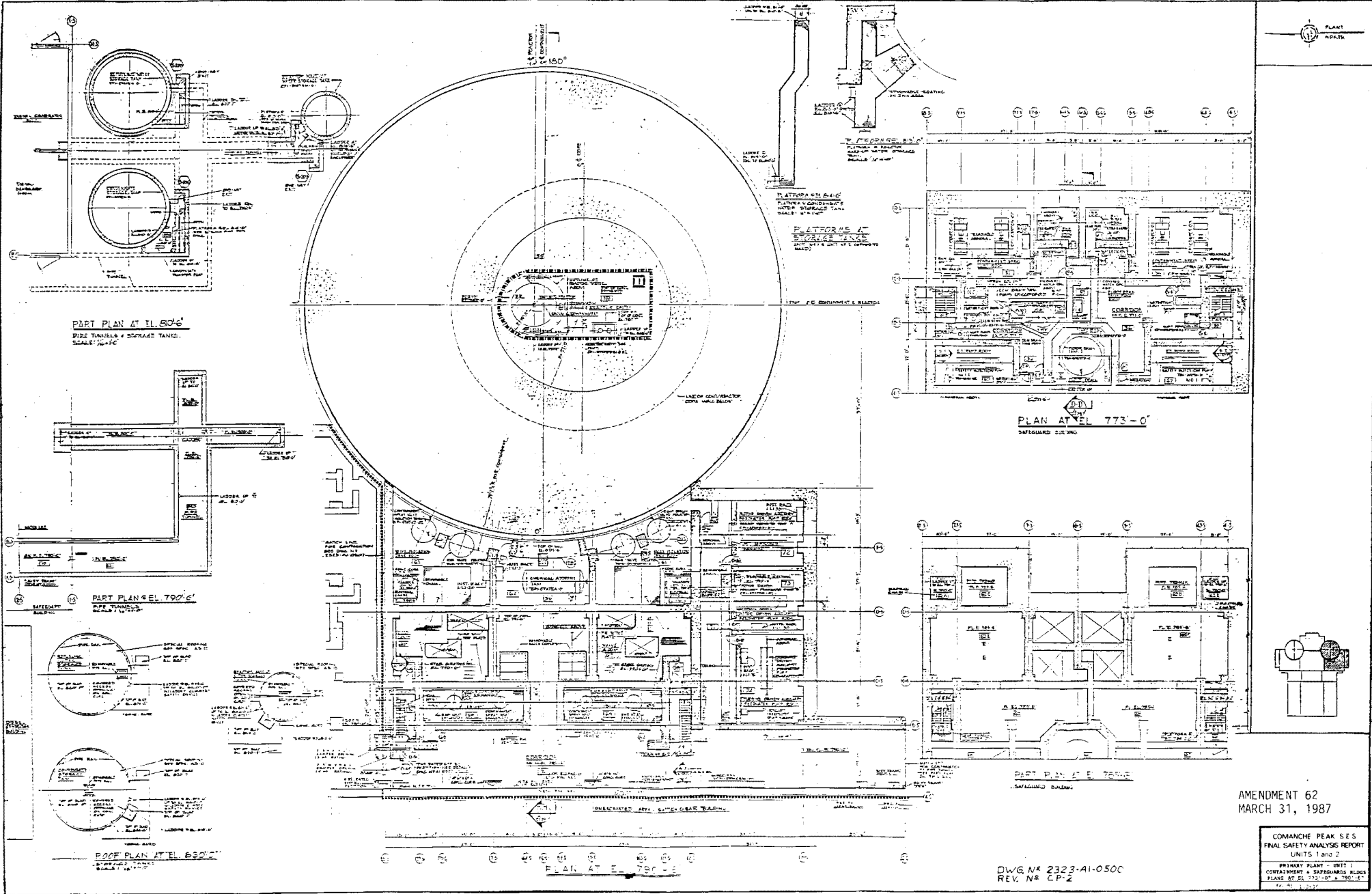
AMENDMENT 10  
 MARCH 31, 1980



COMANCHE PEAK S.E.S.  
 FINAL SAFETY ANALYSIS REPORT  
 UNITS 1 and 2

BUILDING CROSS-SECTION  
 E-E

FIGURE No 1.2-9

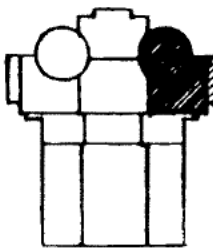


AMENDMENT 62  
MARCH 31, 1987

COMANCHE PEAK SES  
FINAL SAFETY ANALYSIS REPORT  
UNITS 1 and 2  
PRIMARY PLANT - UNIT 1  
CONTAINMENT & SAFEGUARDING PLUGS  
PLANE AT EL. 773'-0\"/>

DWG. NO. 2323-AI-0500  
REV. NO. CP-2

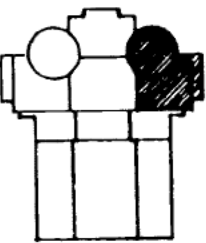
Information Withheld in Accordance with 10 CFR 2.390



COMANCHE PEAK S E S  
FINAL SAFETY ANALYSIS REPORT  
UNITS 1 and 2

PRIMARY SYSTEM UNITS  
CONTAINMENT & SAFEGUARD  
BUILDINGS - PLANS AT EL.  
R/R - 0' AND R/O - 6'

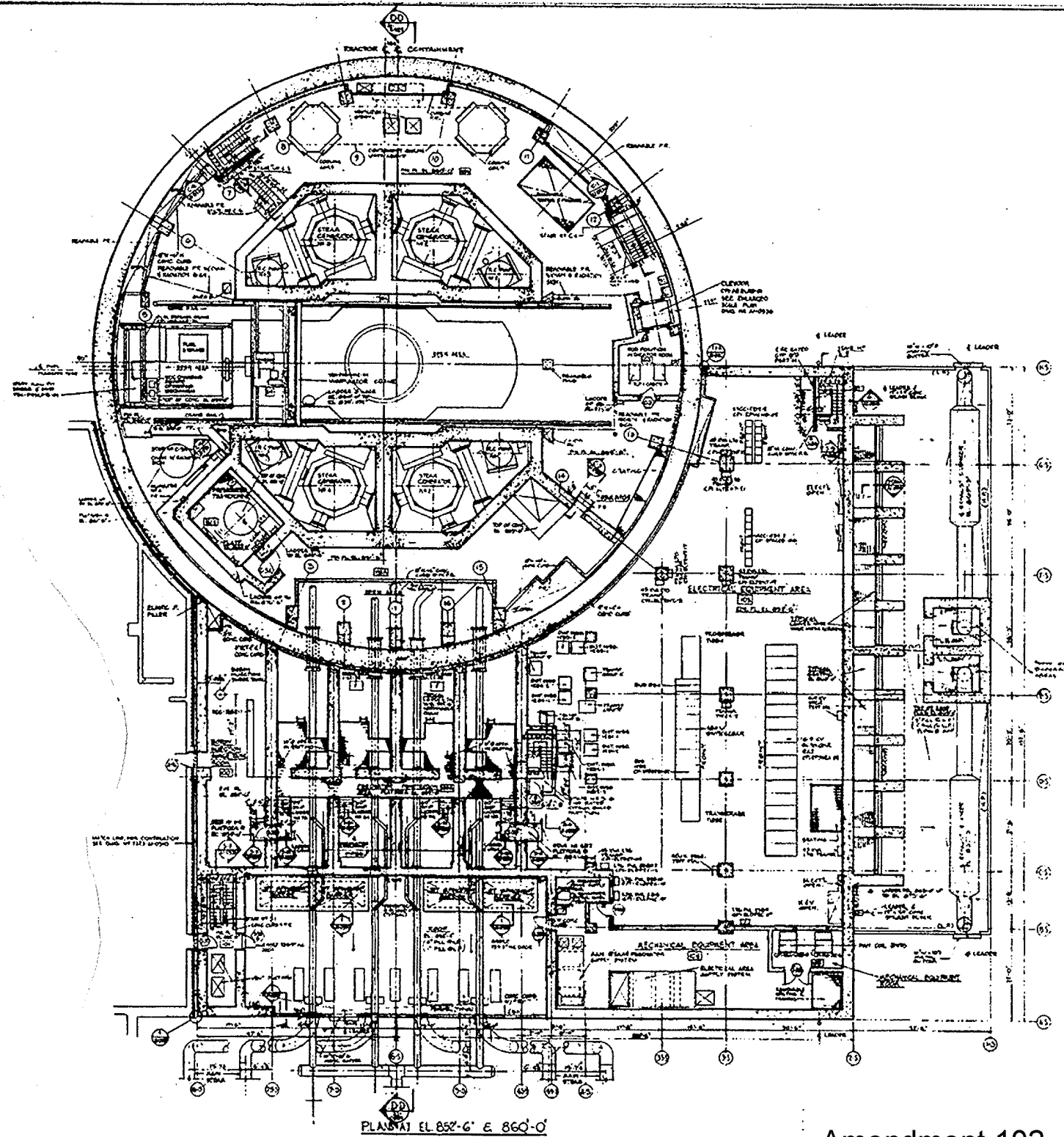
FIGURE NO. 1-2-3



COMANCHE PEAK S.E.S.  
FINAL SAFETY ANALYSIS REPORT  
UNITS 1 and 2

PRIMARY PLANT - UNIT 1  
CONTAINMENT & SAFEGUARD  
BUILDINGS - PLANS AT EL.  
831'-6" AND 832'-6"

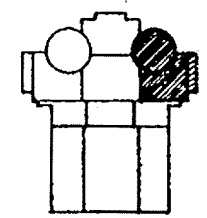
FIGURE NO. 1.2.12



DWG. No 2323-AI-0503 SH. -

PLAN AT EL 852'-6" & 860'-0"

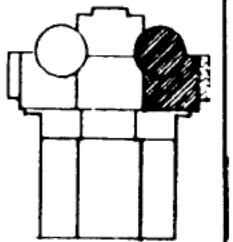
Amendment 102



COMANCHE PEAK S.E.S.  
FINAL SAFETY ANALYSIS REPORT  
UNITS 1 and 2

PRIMARY PLANT - UNIT 1  
CONTAINMENT & SAFEGUARD  
BUILDINGS - PLANS AT EL  
852'-6" AND 860'-0"

FIGURE NO. 1.2.15

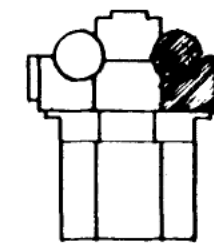


COMANCHE PEAK S.E.S.  
VAL SAFETY ANALYSIS REPORT  
UNITS 1 and 2

PRIMARY PLANT - UNIT 1  
CONTAINMENT & SAFEGUARD  
BUILDINGS - FLOOR PLANS  
AT EL. 873' - 6"

FIGURE # 1-2-14

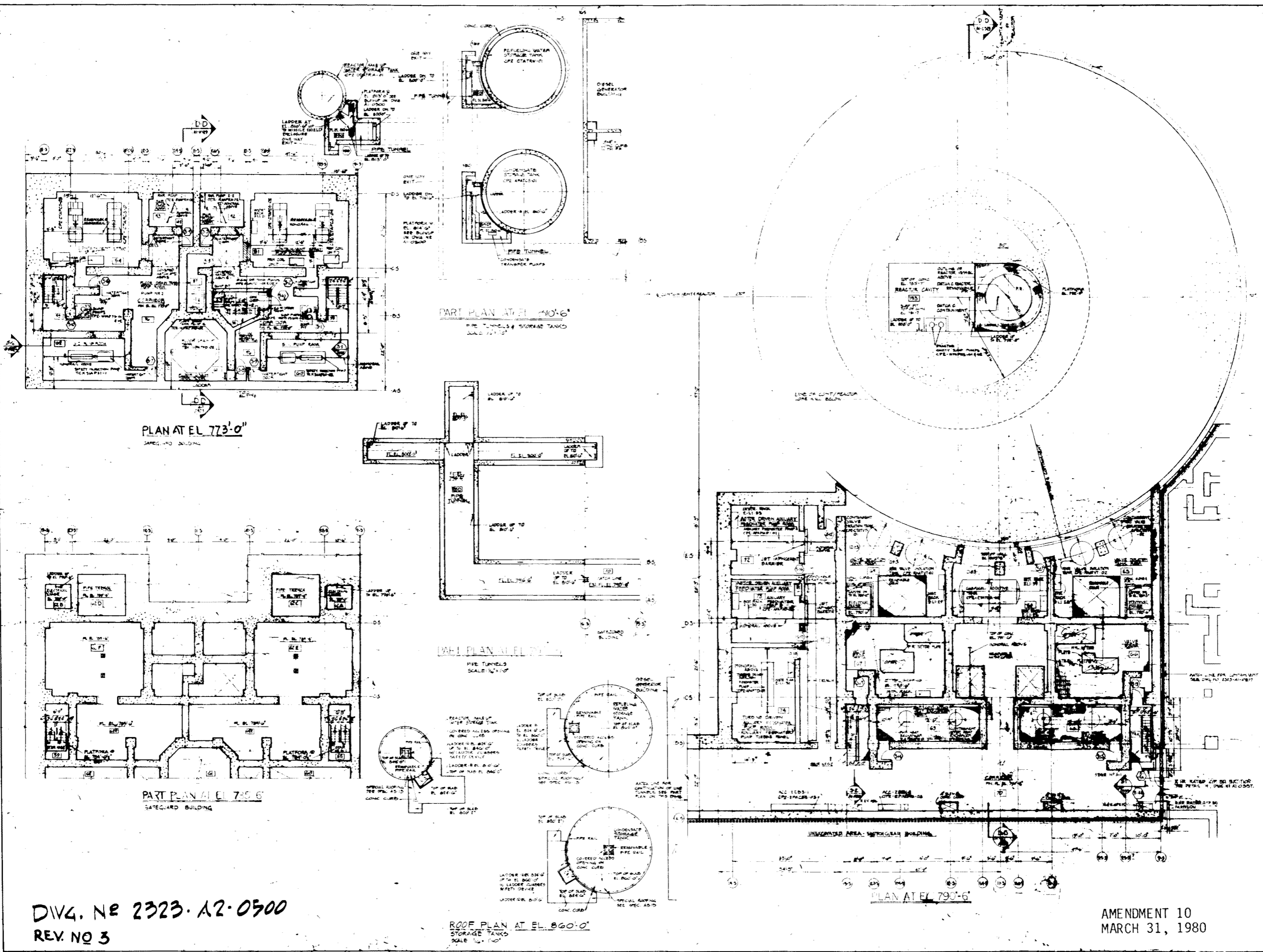
Information Withheld in Accordance with 10 CFR 2.390



COMANCHE PEAK S.E.S.  
FINAL SAFETY ANALYSIS REPORT  
UNITS 1 and 2

PRIMARY PLANT UNIT 1  
CONTAINMENT BUILDING  
PLAN AT EL. 905'-9"

FIGURE N° 1.2.15



- GENERAL NOTES:**
1. ALL EQUIPMENT LOCATIONS INDICATED SHOWN ON THIS DRAWING SHALL NOT BE USED FOR INSTALLATION.
  2. FOR DIRECTION OF GEATING, SEE DEPTH OF GEATING, SEE STRUCTURAL DRAWINGS.
  3. FOR PENETRATIONS IN CEILING, FLOOR, WALLS, SEE MECH, STRUCT, ELECT DRAWINGS.
  4. FOR LOCATION OF LEADERS SEE DIV. #1 AT 0500.
  5. FOR LOCATION OF LEADERS SEE DIV. #1 AT 0500.

DATA SHEET - REFERENCE DRAWING

**SAFEGUARD BUILDING**

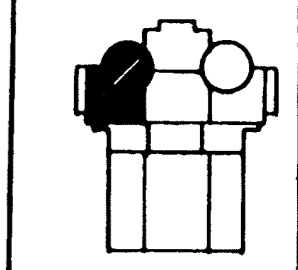
STRUCTURAL: A1, A2, A3, A4, A5, A6, A7, A8, A9, A10, A11, A12, A13, A14, A15, A16, A17, A18, A19, A20, A21, A22, A23, A24, A25, A26, A27, A28, A29, A30, A31, A32, A33, A34, A35, A36, A37, A38, A39, A40, A41, A42, A43, A44, A45, A46, A47, A48, A49, A50, A51, A52, A53, A54, A55, A56, A57, A58, A59, A60, A61, A62, A63, A64, A65, A66, A67, A68, A69, A70, A71, A72, A73, A74, A75, A76, A77, A78, A79, A80, A81, A82, A83, A84, A85, A86, A87, A88, A89, A90, A91, A92, A93, A94, A95, A96, A97, A98, A99, A100, A101, A102, A103, A104, A105, A106, A107, A108, A109, A110, A111, A112, A113, A114, A115, A116, A117, A118, A119, A120, A121, A122, A123, A124, A125, A126, A127, A128, A129, A130, A131, A132, A133, A134, A135, A136, A137, A138, A139, A140, A141, A142, A143, A144, A145, A146, A147, A148, A149, A150, A151, A152, A153, A154, A155, A156, A157, A158, A159, A160, A161, A162, A163, A164, A165, A166, A167, A168, A169, A170, A171, A172, A173, A174, A175, A176, A177, A178, A179, A180, A181, A182, A183, A184, A185, A186, A187, A188, A189, A190, A191, A192, A193, A194, A195, A196, A197, A198, A199, A200, A201, A202, A203, A204, A205, A206, A207, A208, A209, A210, A211, A212, A213, A214, A215, A216, A217, A218, A219, A220, A221, A222, A223, A224, A225, A226, A227, A228, A229, A230, A231, A232, A233, A234, A235, A236, A237, A238, A239, A240, A241, A242, A243, A244, A245, A246, A247, A248, A249, A250, A251, A252, A253, A254, A255, A256, A257, A258, A259, A260, A261, A262, A263, A264, A265, A266, A267, A268, A269, A270, A271, A272, A273, A274, A275, A276, A277, A278, A279, A280, A281, A282, A283, A284, A285, A286, A287, A288, A289, A290, A291, A292, A293, A294, A295, A296, A297, A298, A299, A300, A301, A302, A303, A304, A305, A306, A307, A308, A309, A310, A311, A312, A313, A314, A315, A316, A317, A318, A319, A320, A321, A322, A323, A324, A325, A326, A327, A328, A329, A330, A331, A332, A333, A334, A335, A336, A337, A338, A339, A340, A341, A342, A343, A344, A345, A346, A347, A348, A349, A350, A351, A352, A353, A354, A355, A356, A357, A358, A359, A360, A361, A362, A363, A364, A365, A366, A367, A368, A369, A370, A371, A372, A373, A374, A375, A376, A377, A378, A379, A380, A381, A382, A383, A384, A385, A386, A387, A388, A389, A390, A391, A392, A393, A394, A395, A396, A397, A398, A399, A400, A401, A402, A403, A404, A405, A406, A407, A408, A409, A410, A411, A412, A413, A414, A415, A416, A417, A418, A419, A420, A421, A422, A423, A424, A425, A426, A427, A428, A429, A430, A431, A432, A433, A434, A435, A436, A437, A438, A439, A440, A441, A442, A443, A444, A445, A446, A447, A448, A449, A450, A451, A452, A453, A454, A455, A456, A457, A458, A459, A460, A461, A462, A463, A464, A465, A466, A467, A468, A469, A470, A471, A472, A473, A474, A475, A476, A477, A478, A479, A480, A481, A482, A483, A484, A485, A486, A487, A488, A489, A490, A491, A492, A493, A494, A495, A496, A497, A498, A499, A500, A501, A502, A503, A504, A505, A506, A507, A508, A509, A510, A511, A512, A513, A514, A515, A516, A517, A518, A519, A520, A521, A522, A523, A524, A525, A526, A527, A528, A529, A530, A531, A532, A533, A534, A535, A536, A537, A538, A539, A540, A541, A542, A543, A544, A545, A546, A547, A548, A549, A550, A551, A552, A553, A554, A555, A556, A557, A558, A559, A560, A561, A562, A563, A564, A565, A566, A567, A568, A569, A570, A571, A572, A573, A574, A575, A576, A577, A578, A579, A580, A581, A582, A583, A584, A585, A586, A587, A588, A589, A590, A591, A592, A593, A594, A595, A596, A597, A598, A599, A600, A601, A602, A603, A604, A605, A606, A607, A608, A609, A610, A611, A612, A613, A614, A615, A616, A617, A618, A619, A620, A621, A622, A623, A624, A625, A626, A627, A628, A629, A630, A631, A632, A633, A634, A635, A636, A637, A638, A639, A640, A641, A642, A643, A644, A645, A646, A647, A648, A649, A650, A651, A652, A653, A654, A655, A656, A657, A658, A659, A660, A661, A662, A663, A664, A665, A666, A667, A668, A669, A670, A671, A672, A673, A674, A675, A676, A677, A678, A679, A680, A681, A682, A683, A684, A685, A686, A687, A688, A689, A690, A691, A692, A693, A694, A695, A696, A697, A698, A699, A700, A701, A702, A703, A704, A705, A706, A707, A708, A709, A710, A711, A712, A713, A714, A715, A716, A717, A718, A719, A720, A721, A722, A723, A724, A725, A726, A727, A728, A729, A730, A731, A732, A733, A734, A735, A736, A737, A738, A739, A740, A741, A742, A743, A744, A745, A746, A747, A748, A749, A750, A751, A752, A753, A754, A755, A756, A757, A758, A759, A760, A761, A762, A763, A764, A765, A766, A767, A768, A769, A770, A771, A772, A773, A774, A775, A776, A777, A778, A779, A780, A781, A782, A783, A784, A785, A786, A787, A788, A789, A790, A791, A792, A793, A794, A795, A796, A797, A798, A799, A800, A801, A802, A803, A804, A805, A806, A807, A808, A809, A810, A811, A812, A813, A814, A815, A816, A817, A818, A819, A820, A821, A822, A823, A824, A825, A826, A827, A828, A829, A830, A831, A832, A833, A834, A835, A836, A837, A838, A839, A840, A841, A842, A843, A844, A845, A846, A847, A848, A849, A850, A851, A852, A853, A854, A855, A856, A857, A858, A859, A860, A861, A862, A863, A864, A865, A866, A867, A868, A869, A870, A871, A872, A873, A874, A875, A876, A877, A878, A879, A880, A881, A882, A883, A884, A885, A886, A887, A888, A889, A890, A891, A892, A893, A894, A895, A896, A897, A898, A899, A900, A901, A902, A903, A904, A905, A906, A907, A908, A909, A910, A911, A912, A913, A914, A915, A916, A917, A918, A919, A920, A921, A922, A923, A924, A925, A926, A927, A928, A929, A930, A931, A932, A933, A934, A935, A936, A937, A938, A939, A940, A941, A942, A943, A944, A945, A946, A947, A948, A949, A950, A951, A952, A953, A954, A955, A956, A957, A958, A959, A960, A961, A962, A963, A964, A965, A966, A967, A968, A969, A970, A971, A972, A973, A974, A975, A976, A977, A978, A979, A980, A981, A982, A983, A984, A985, A986, A987, A988, A989, A990, A991, A992, A993, A994, A995, A996, A997, A998, A999, A1000.

**CONTAINMENT BUILDING INSTRUMENTATION**

M2 2601, M2 2608

DWG. NO 2323-A2-0500  
REV. NO 3

AMENDMENT 10  
MARCH 31, 1980



COMANCHE PEAK S.E.S.  
FINAL SAFETY ANALYSIS REPORT  
UNITS 1 and 2

FIGURE # 121G





GENERAL NOTES:

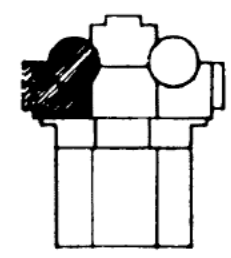
1. ALL EQUIPMENT LOCATION DIMENSIONS SHOWN ON THIS DRAWING SHALL NOT BE USED FOR INSTALLATION.
2. FOR RECEIVING OF CRATING, SPIN & DEPTH OF CRATING, SEE STRUCTURAL DRAWINGS.
3. FOR ALL DIMENSIONS IN CRATING & PLUMB BLAND, SEE MECH. STRUCT. ELECTR. DRAWINGS.

GENERAL NOTES:

1. WATER TIGHT DOORS SHALL BE PROVIDED FOR ALL DOORS.
- PIPING: AT 0505, 05-0505, 05-0507, 05-0507
  - VENTILATION: AT 0505, AT 0505
  - ELECTRICAL: AT 0505, E2-0505, E2-0507

CONTAINMENT BUILDING

- STRUCTURAL: SI-0505
- PIPING: PI-0505
- VENTILATION: VI-0505
- ELECTRICAL: E2-0505
- MECHANICAL: ME-1005



COMANCHE PEAK S.E.S.  
FINAL SAFETY ANALYSIS REPORT  
UNITS 1 and 2

PRIMARY PLANT-UNIT 2  
CONTAINMENT & SAFEGUARD BLDG.  
PLANS AT E.L. 800'-0" AND 510'-0".

FIGURE NO. 1-2-17

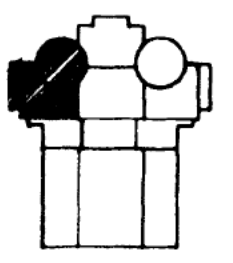


GENERAL NOTES

1. ALL EQUIPMENT LOCATION DIMENSIONS SHOWN ON THIS DRAWING SHALL NOT BE USED FOR INSTALLATION.
2. FOR DIRECTION OF GRATING, SIZE & DEPTH OF GRATING, SEE STRUCTURAL DRAWINGS.
3. FOR ALL PENETRATIONS IN ROOFING & FLOOR SLABS, SEE MECH, STRUCT, ELCT, DRAWINGS.
4. FOR ALL PENETRATIONS IN ROOFING & FLOOR SLABS, SEE MECH, STRUCT, ELCT, DRAWINGS.
5. FOR ALL PENETRATIONS IN ROOFING & FLOOR SLABS, SEE MECH, STRUCT, ELCT, DRAWINGS.

GRID & HILL REFERENCE

- DRAWING
- CONTAINMENT BUILDING
- STRUCTURAL
- ME-0102, ME-0103, ME-0104  
VENTILATION
- ME-0105  
PIPING
- ME-0107, ME-0108  
PLUMBING
- ME-0109  
INSTRUMENTATION
- ELECTRICAL
- 12-0300-01
- SAFEGUARD BUILDING
- STRUCTURAL
- ME-0201, ME-0202, ME-0203  
VENTILATION
- ME-0204  
PIPING
- ME-0205  
PLUMBING
- ME-0206, ME-0207  
INSTRUMENTATION
- ME-0208  
ELECTRICAL
- ET-0201/02



COMANCHE PEAK S.E.S.  
FINAL SAFETY ANALYSIS REPORT  
UNITS 1 and 2

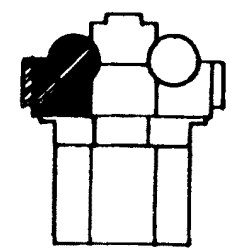
PRIMARY PLANT - UNIT 2  
CONTAINMENT & SAFEGUARD BUILDINGS  
PLANS AT EL-010-G AND 020-G

FIGURE NO. 1-2-1B



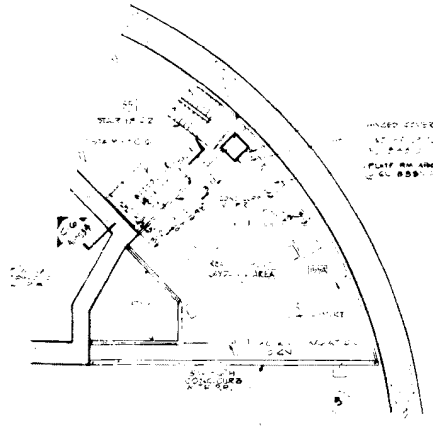
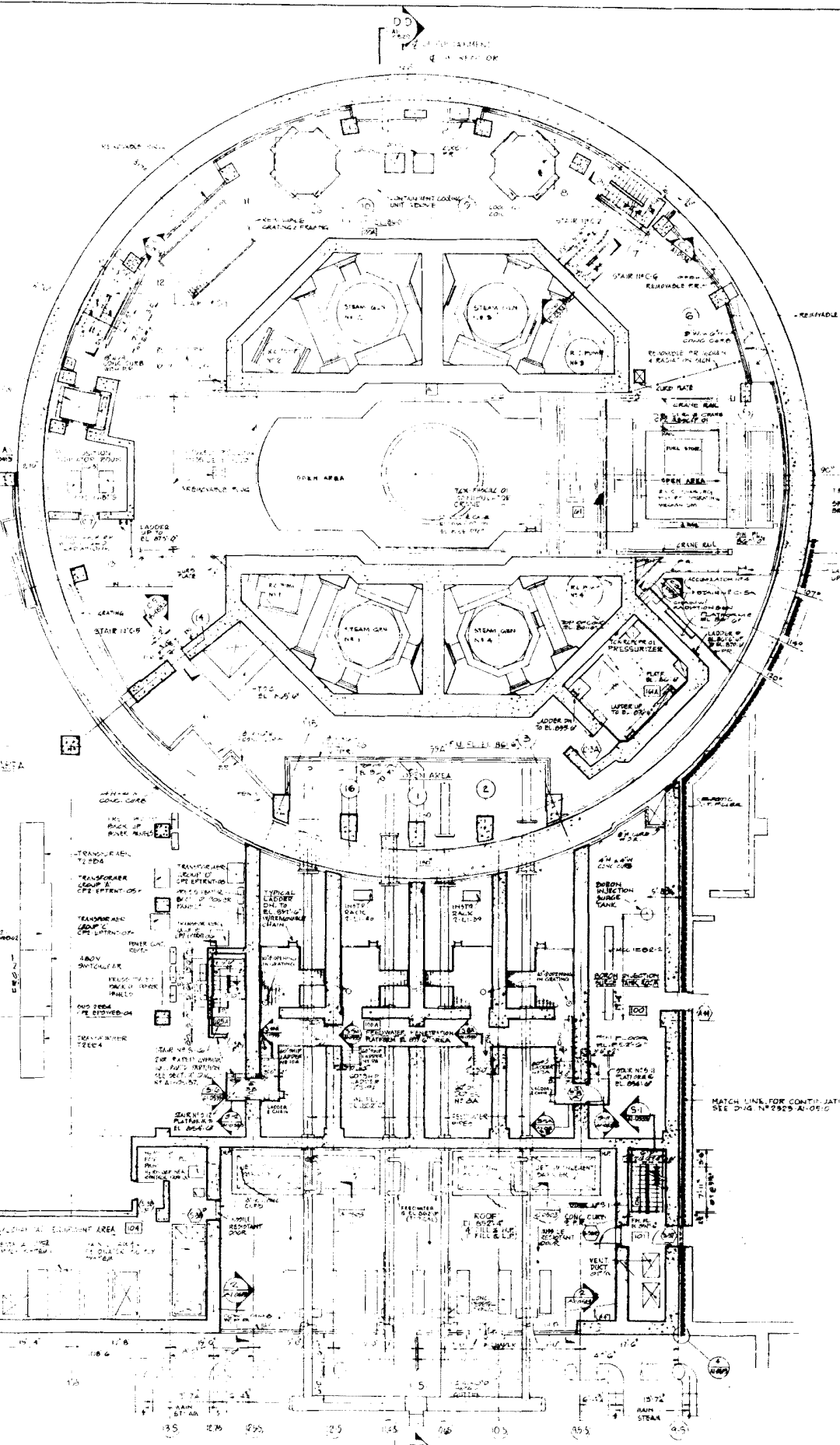
- GENERAL NOTES**
1. ALL EQUIPMENT LOCATION DIMENSIONS SHOWN ON THIS DRAWING SHALL NOT BE USED FOR INSTALLATION.
  2. FOR SELECTION OF GRATING TYPE & DEPTH OF GRATING, SEE STRUCTURAL DRAWINGS.
  3. FOR ALL PENETRATIONS IN GRATING & FLOOR SLABS, SEE MECH. STRUCT. DRAWINGS.
  4. FOR ROOF DETAILS NOT INDICATED ON THIS DRAWING, SEE ROOF PLAN & DETAIL DRAWING 2323-12-0503-100.

- GLOBAL REFERENCE DRAWINGS**
- CONTAINMENT BUILDING
- STRUCTURAL
- 02-0528, 02-0529, 02-0540
- VENTILATION
- ME-0552
- ME-0507
- ME-0502
- ME-0502
- INSTRUMENTATION
- ELECTRICAL
- EE-0508, EE-0507
- SAFE-HARD BUILDING
- STRUCTURAL
- 02-0541, 02-0544
- VENTILATION
- ME-0554
- ME-0501
- ME-0501
- ME-0504
- INSTRUMENTATION
- EE-0509
- ELECTRICAL
- EE-0505, EE-0506

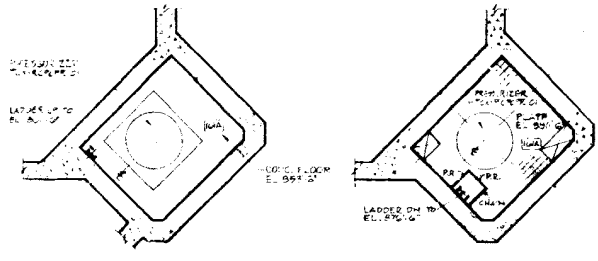


**COMANCHE PEAK S.E.S.**  
FINAL SAFETY ANALYSIS REPORT  
UNITS 1 and 2

PRIMARY PLANT - UNIT 2  
CONTAINMENT BUILDING - PLANS 01-0101  
02-0101 AND 02-0102

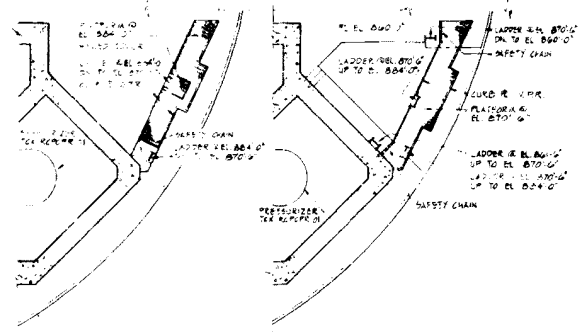


PARTIAL PLAN AT E. 371'6"  
SCALE: 1/4" = 1'-0"



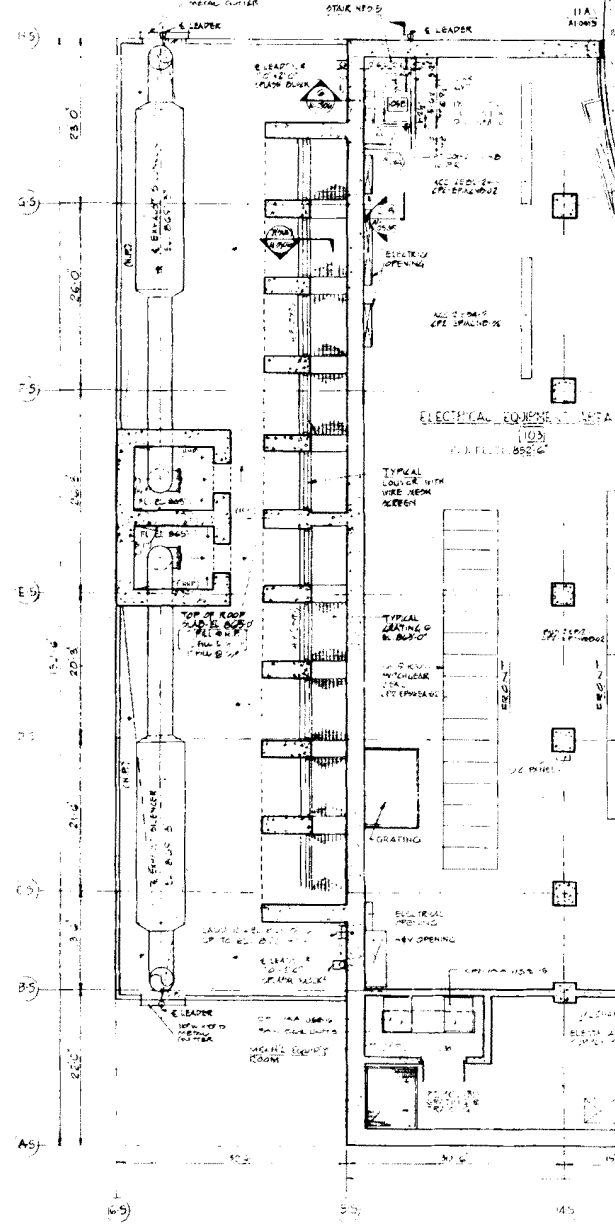
PARTIAL PLAN  
AT E. 336'6"  
SCALE: 1/4" = 1'-0"

PARTIAL PLAN  
AT E. 336'6"  
SCALE: 1/4" = 1'-0"



PARTIAL PLAN  
AT E. 284'6"  
SCALE: 1/4" = 1'-0"

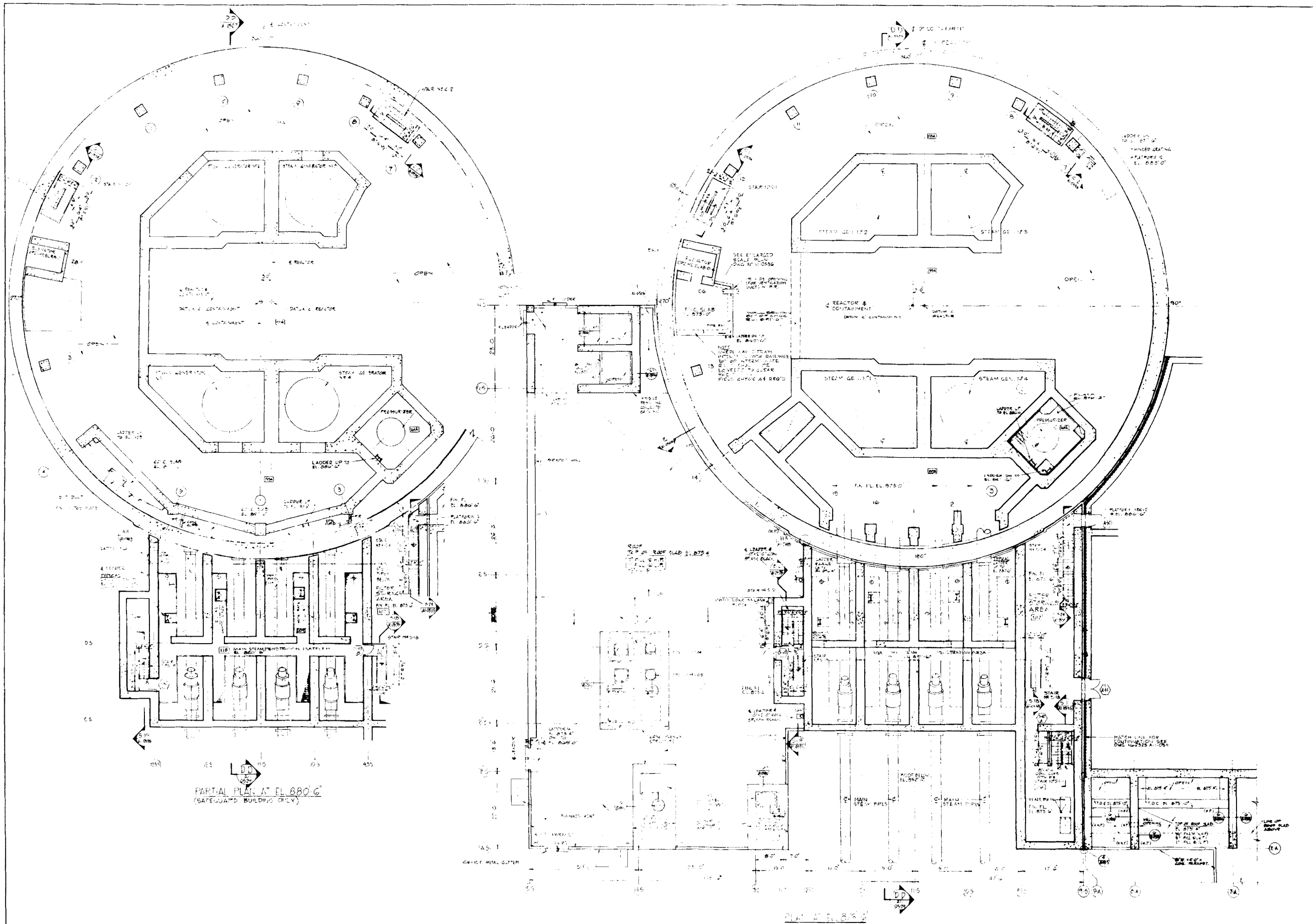
PARTIAL PLAN  
AT E. 270'6"  
SCALE: 1/4" = 1'-0"



PLANS AT E. 292'6" & 295'0"

DWG. NO. 2323-12-0503  
REV. NO. 3

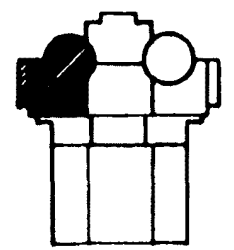
AMENDMENT 10  
MARCH 31, 1980



**LEGEND**  
 PRECAST CONCRETE LEADER  
 SEE DWG 17-110552

- GENERAL NOTES:**
1. ALL EQUIPMENT LOCATION DIMENSIONS SHOWN ON THIS DRAWING SHALL NOT BE USED FOR INSTALLATION.
  2. FOR DIRECTION OF GRATING, SPAN & DEPTH OF GRATING, SEE STRUCTURAL DRAWINGS.
  3. FOR ALL PENETRATIONS IN GRATING & FLOOR SLABS, SEE MECH. STRUCT. ELEC. DRAWINGS.
  4. ALL DIMENSIONS ARE UNLESS OTHERWISE SPECIFIED.
  5. REFER TO DWG 17-110552 FOR FURTHER INFORMATION.

- 05004 HILL REFERENCE DRAWINGS**
- CONTAINMENT BUILDING STRUCTURE: S2-0510, S2-0520, S2-0530
  - VENTILATION: M2-0552
  - PIPING: M2-0505
  - BUILDING: A2-0506
  - INSTRUMENTATION
  - ELECTRICAL: E2-0503
  - SAFEGUARD BUILDING STRUCTURE: S2-0514
  - VENTILATION: M2-0504
  - PIPING: M2-0504
  - INSTRUMENTATION
  - ELECTRICAL: E2-0503



**COMANCHE PEAK S.E.S. FINAL SAFETY ANALYSIS REPORT UNITS 1 and 2**

PRIMARY PLANT - UNIT 2  
 CONTAINMENT & SAFEGUARD BUILDINGS - FLOOR PLANS AT EL. 873'-6"

FIGURE NO. 12-20

DWG. NO. 2323-A2-0504  
 REV. NO. 9

AMENDMENT 10  
 MARCH 31, 1980

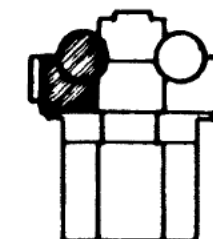
PLANT  
NOTES

GENERAL NOTES:

1. ALL EQUIPMENT DIMENSIONS SHOWN ON THIS DRAWING SHALL NOT BE USED FOR INSTALLATION.
2. FOR DIRECTION OF BEARING SPIN & DEPTH OF GRATING, SEE MECHANICAL DRAWINGS.
3. FOR ALL POINTS IN GRATING & FLOOR SLABS, SEE MECHANICAL, ELECT. DRAWINGS.
4. FOR EBF DIMENSIONS INDICATED ON THIS DRAWING, SEE EBF PLAN & DETAIL DRAWING ES25 AT 09007.
5. FOR LOCATION OF LEADERS SEE DRAWING AT 09008.

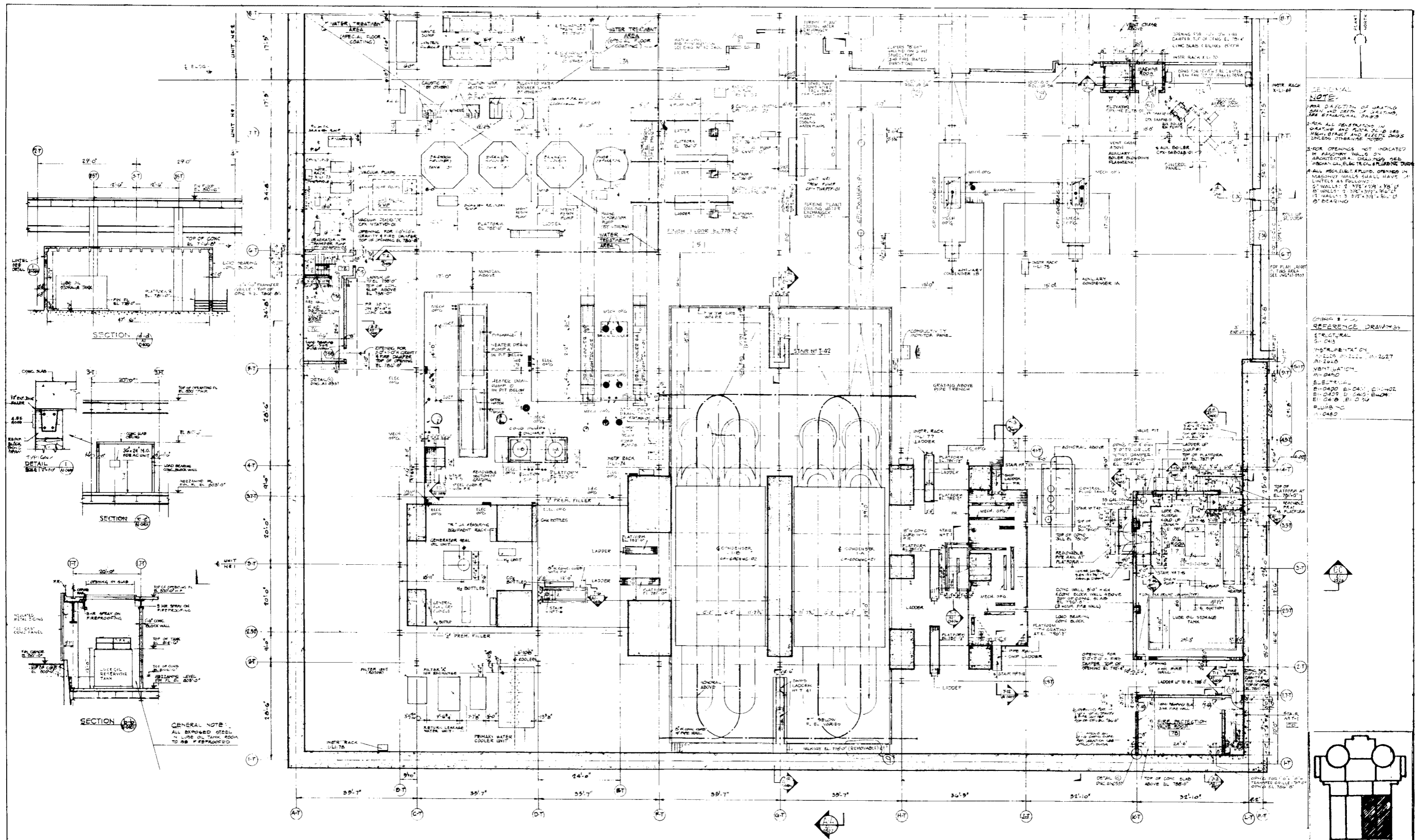
GENERAL REFERENCE

- DRAWINGS  
CONTAINMENT  
ME-0934, SE-0935
- MECHANICAL  
ME-0934
- ELECTRICAL  
E-0934
- PLUMBING  
PL-0934
- FOUNDATION  
F-0934



COMANCHE PEAK S.E.S.  
FINAL SAFETY ANALYSIS REPORT  
UNITS 1 and 2

PRIMARY PLANT - UNIT 2  
CONTAINMENT BUILDING  
PLAN AT EL. 905' - 9"



BASEMENT FLOOR PLAN

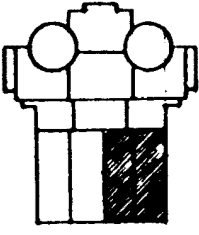
DWG. No 2323-AI-0400  
 REV. No 9

GENERAL NOTE  
 1. ALL EQUIPMENT LOCATION DIMENSIONS SHOWN ON THIS DRAWING SHALL NOT BE USED FOR INSTALLATION

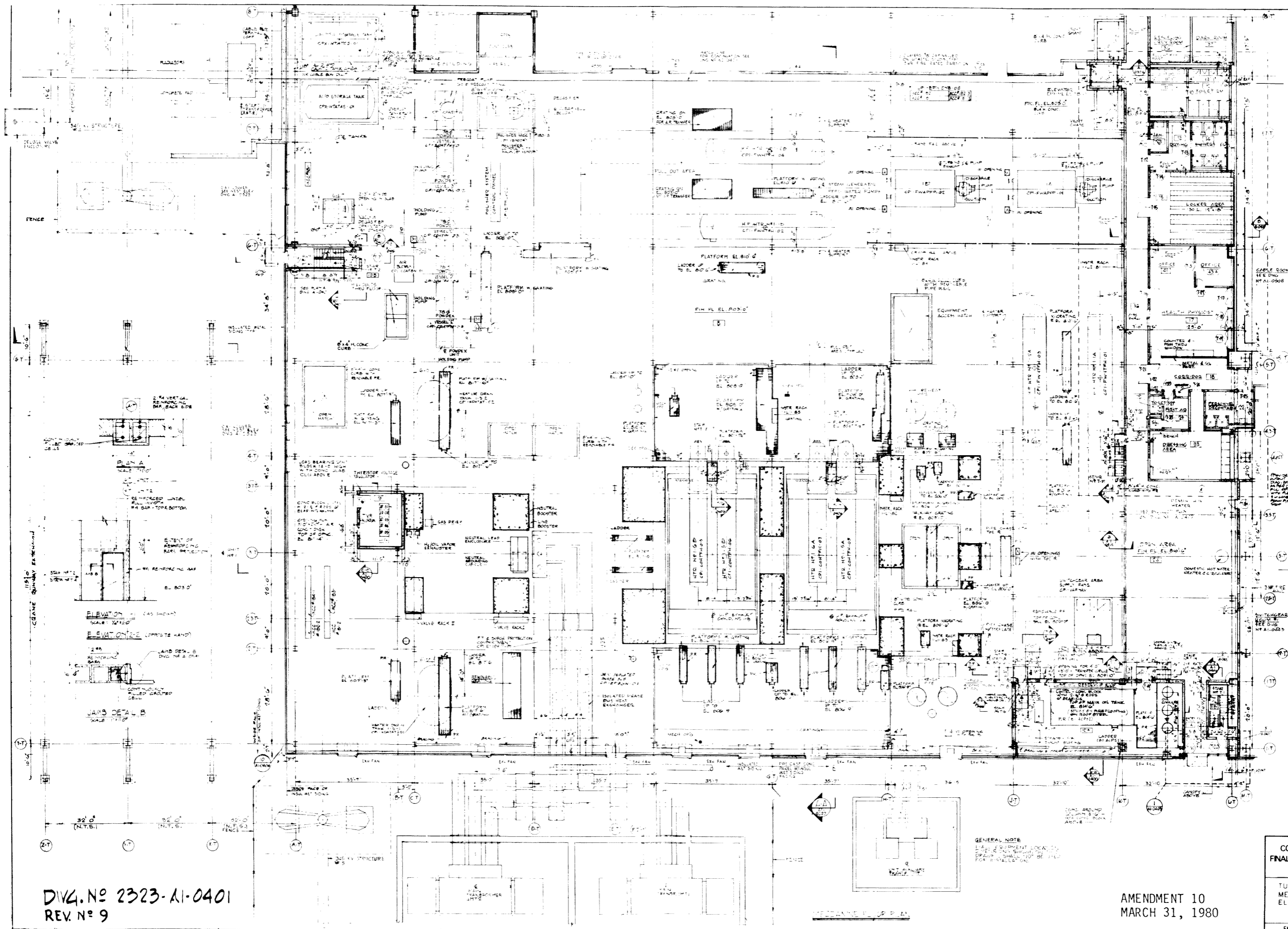
AMENDMENT 10  
 MARCH 31, 1980

GENERAL NOTE  
 1. ALL DIMENSIONS OF WALLS, PARTIAL WALLS, PARTIAL DOORS, AND ALL OPENINGS IN WALLS AND PARTIAL WALLS SHALL BE AS SHOWN UNLESS OTHERWISE NOTED.  
 2. FOR OPENINGS NOT INDICATED IN ARCHITECTURAL DRAWINGS, SEE MECHANICAL ELECTRICAL PLUMBING DRAWINGS.  
 3. ALL MECHANICAL EQUIPMENT OPENINGS IN PARTIAL WALLS SHALL HAVE LINTELS AS FOLLOWS:  
 3" WALLS: 2" MIN. LINTEL  
 4" WALLS: 3" MIN. LINTEL  
 6" WALLS: 4" MIN. LINTEL  
 8" WALLS: 5" MIN. LINTEL  
 10" WALLS: 6" MIN. LINTEL

REFERENCE DRAWINGS  
 STRUCTURAL  
 S1-043  
 INSTRUMENTATION  
 I1-022, I1-027  
 VENTILATION  
 V1-040  
 ELECTRICAL  
 E1-040, E1-041, E1-042, E1-043, E1-044, E1-045, E1-046, E1-047, E1-048, E1-049

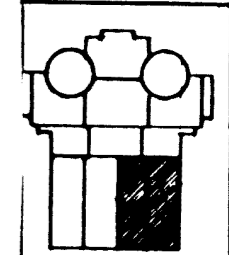
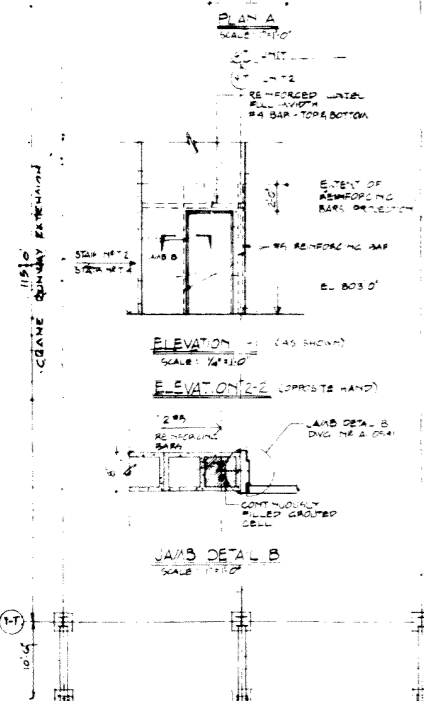


COMANCHE PEAK S.E.S.  
 FINAL SAFETY ANALYSIS REPORT  
 UNITS 1 and 2  
 TURBINE BUILDING UNIT NO. 1  
 BASEMENT FLOOR PLAN  
 EL. 778'-0"  
 FIGURE No 12 - 22



NOTE  
 FOR DIRECTION OF DRAINAGE  
 SEE AND DEPTH OF DRAINAGE  
 SEE STRUCTURAL DRAWINGS  
 ALL AS-BUILT AND  
 DRAINAGE AND FLOOR S.L.  
 SEE ARCH. STRUCT. AND  
 ELECTR. DRAWG.  
 2. FOR GENERAL NOTES SEE A-1-1

COMP. & HILL  
 REFERENCE DRAWINGS  
 STRUCTURAL  
 S-0401, S-0410, S-0403  
 VENTILATION  
 V-0403  
 ELECTRICAL  
 E-0202, E-0403, E-0404  
 E-0405, E-0412, E-0413  
 E-0414, E-0417  
 PIPING  
 P-0403, P-0404, P-0405  
 P-0412, P-0413, P-0414



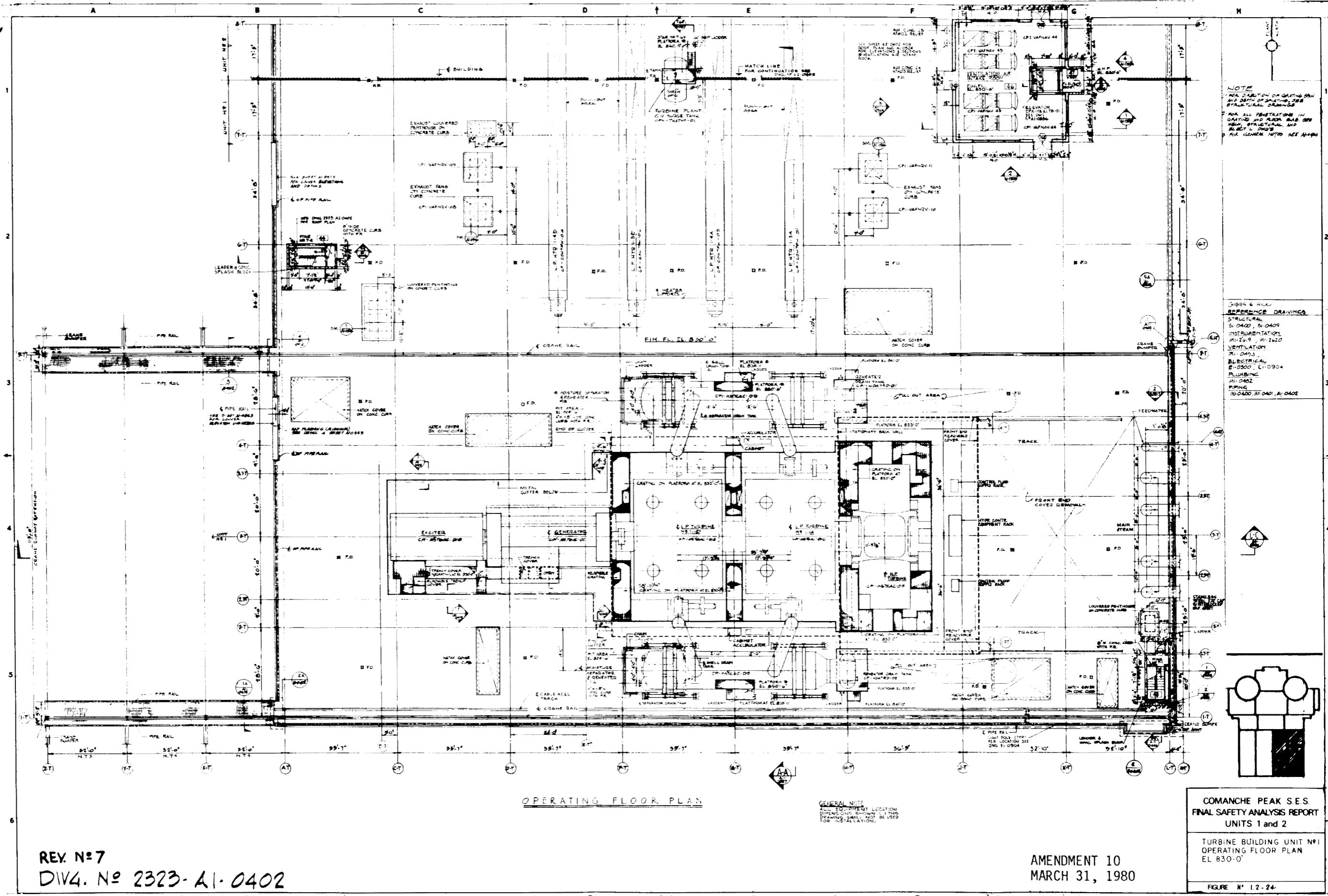
GENERAL NOTE  
 1. ALL EQUIPMENT LOCATED  
 2. SEE DRAWING FOR  
 3. DRAWING SHALL BE USED  
 FOR INSTALLATION

DIV. NO 2323-A1-0401  
 REV. NO 9

AMENDMENT 10  
 MARCH 31, 1980

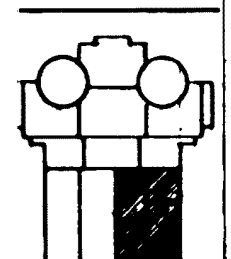
COMANCHE PEAK S-E S  
 FINAL SAFETY ANALYSIS REPORT  
 UNITS 1 and 2  
 TURBINE BUILDING UNIT NO.  
 MEZZANINE FLOOR PLAN  
 EL. 803'-0" & 810'-6"  
 FIGURE #1.2-25





NOTE  
 1. FOR DIRECTION OF GATING PAN AND DEPTH OF GATING PAN SEE STRUCTURAL DRAWINGS  
 2. FOR ALL PENETRATIONS IN GATING AND FLOOR SLAB SEE MECHANICAL AND ELECTRICAL DRAWINGS FOR GENERAL NOTES SEE A-1100

31894 & HILL  
 REFERENCE DRAWINGS  
 STRUCTURAL  
 S1-0402, S1-0409  
 INSTRUMENTATION  
 A1-249, A1-2420  
 VENTILATION  
 V1-0403  
 ELECTRICAL  
 E1-0500, E1-0904  
 PUMPING  
 A1-0402  
 PIPING  
 P1-0400, A1-0401, A1-0402



OPERATING FLOOR PLAN

GENERAL NOTE  
 ALL DIMENSIONS LOCATION DIMENSIONS SHOWN IN THIS DRAWING SHALL NOT BE USED FOR INSTALLATION.

REV. N°7  
 DIV. N° 2323-A1-0402

AMENDMENT 10  
 MARCH 31, 1980

COMANCHE PEAK S.E.S.  
 FINAL SAFETY ANALYSIS REPORT  
 UNITS 1 and 2  
 TURBINE BUILDING UNIT N°1  
 OPERATING FLOOR PLAN  
 EL 830'-0"  
 FIGURE N° 1.2-24