



www.holtec.com
www.smrllc.com

SMR-300 Licensing Plans

July 19, 2024

Presented by: Clark Shurtleff

**SMR, LLC, A Holtec International Company
Krishna P. Singh Technology Campus
One Holtec Boulevard
Camden, NJ 08104, USA**

[Not Export Controlled]

SMR-300 at Palisades

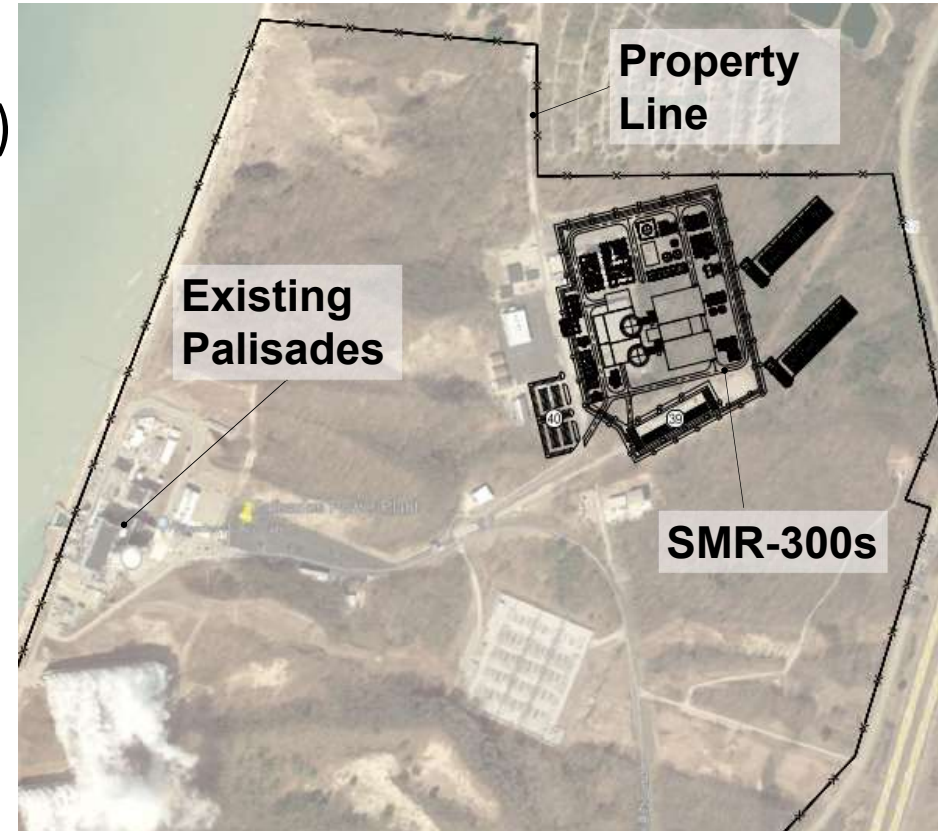


- Light water PWR
- Power output:
 - ✓ 1050 MW_{th}
 - ✓ ~300 MW_e
- Two SMR-300 units onsite
- Traditional PWR fuel system
- Traditional PWR power cycle



SMR-300 at Palisades

- Part 50 application process
 - ✓ construction permit application (CPA)
 - ✓ operating license application (OLA)
- 10 CFR 2.101(a)(9) defines two-part CPA process
 - ✓ LWA is part one of the CPA
 - ✓ CPA Part Two follows by <18 months
 - ✓ Environmental review required before construction begins



Meeting Agenda

- Overall Licensing Timeline
- Environmental Review Process
- Planned LWA Scope
- Planned LWA PSAR Content

Public Comments

Transition to Closed Meeting