



May 1, 2024

Materials Licensing Branch  
U. S. Nuclear Regulatory Commission, Region III  
2443 Warrenville Road, Suite 210  
Lisle, IL 60532-4352

Reference: Amendment to add additional site to license #12-35254-01

Attn: Mr Frank Tran

Dear Sir,

Please accept this letter and attachments as our close-out surveys for:

Deaconess Gibson Hospital  
1808 Sherman Dr.  
Princeton, Indiana 47670  
812-385-3401

Please accept the attached site-specific information close-out surveys for this facility, if you need additional information please contact directly by email or phone.

We hope that the information submitted is satisfactory to expedite Deaconess license request.

Sincerely,

William S. Gooch,  
Radiation Safety Officer  
(618)606-5016  
bgooch@micmos.com

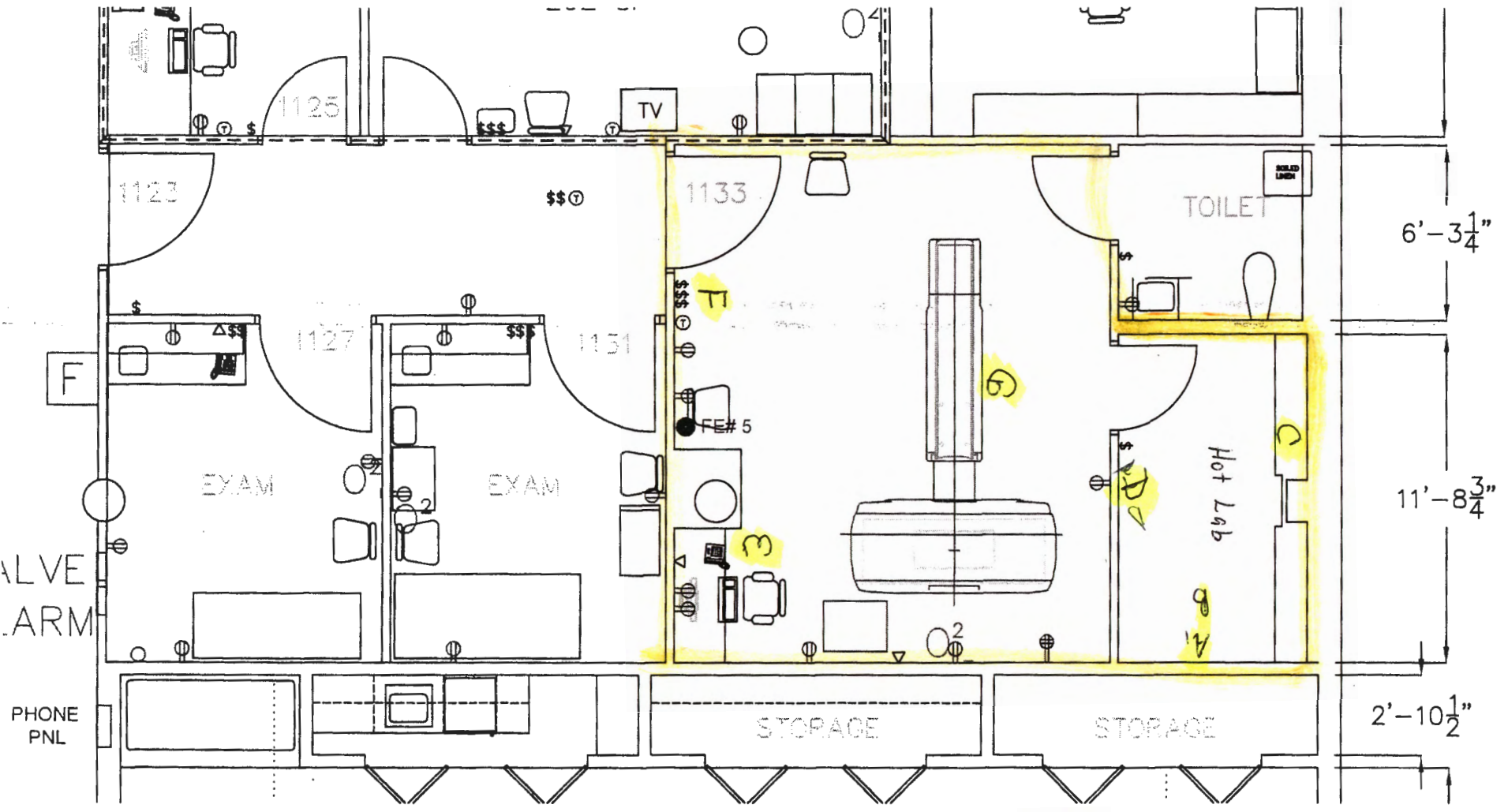
2060 Aberdeen Ct. Suite D Sycamore, IL 60178 (815)895-4381 (815)895-4383 fax www.micmos.com

RECEIVED MAY 07 2024



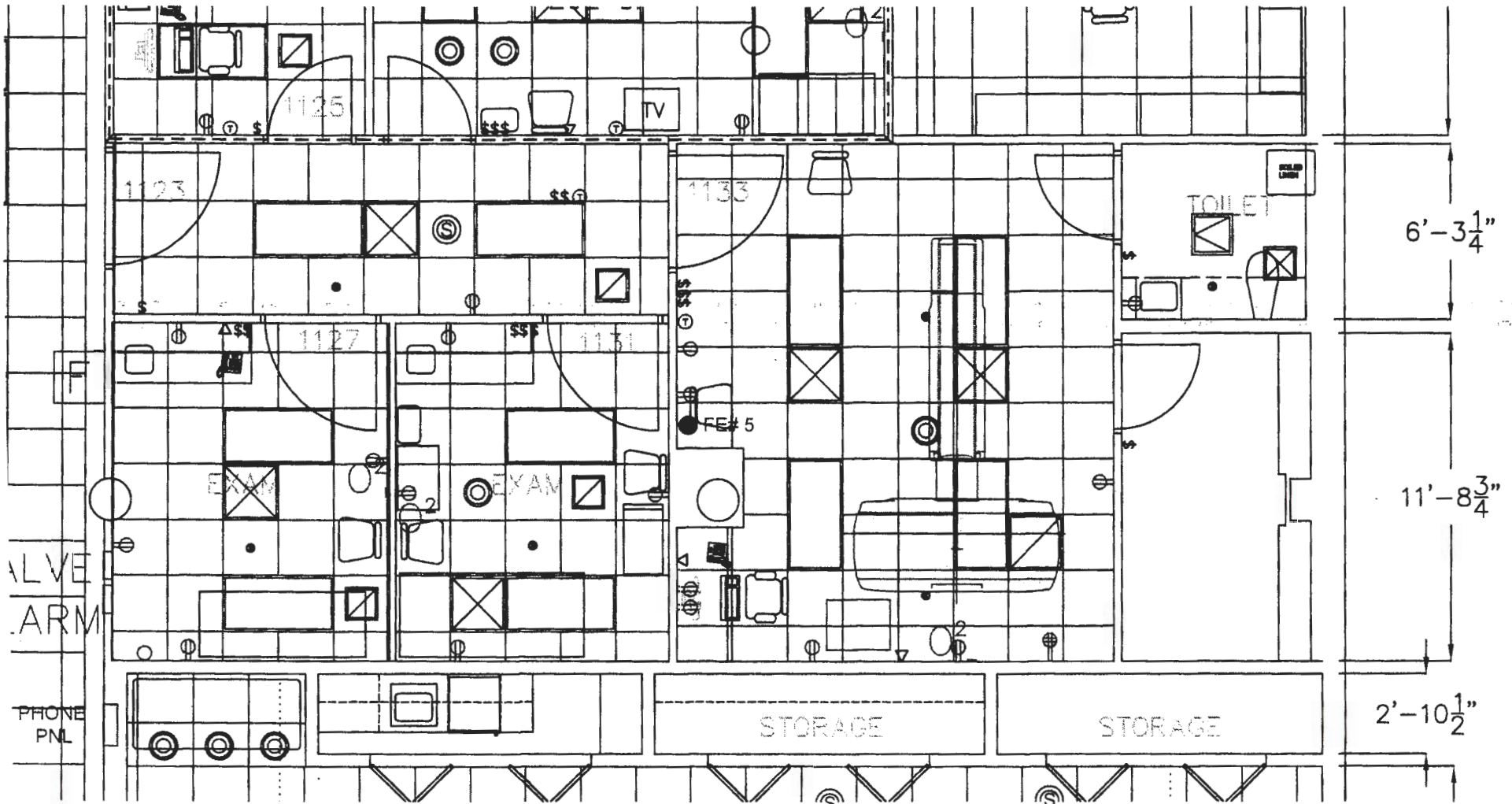
Deaconess Gibson Hospital

Floor Plan - NM

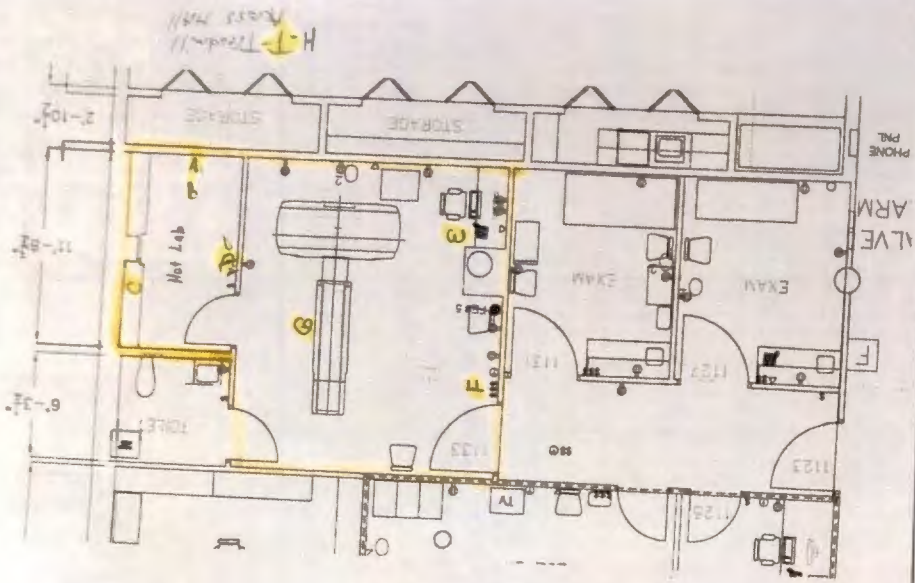


H-T-Treadmill  
Across Hall

# Ceiling Plan - NM







Deborah Gibson Hospital  
Floor Plan - NM

- A<sub>2</sub> - L-shield Door Prep -
- ~~B~~
- B - Floor - close prep -
- C Counter top close delivery -
- D Waste storage
- E Patient chair Injection
- F - computer workstation
- G CAMERA Bed
- H Treadmill



A - L-shield Dose Prep - .02 m/hr

~~scribble~~

B - Floor - dose prep - .02 m/hr

C Counter top dose delivery .02 m/hr

D Waste Storage .02 m/hr

E Patient check Injection .02 m/hr

F - computer processing station .02 m/hr

G Camera Bed .02 m/hr

H Treadmill .02 m/hr

Survey's  
Room BK6 .02 m/hr  
BK6 175cpm.

wife A-H  
All  $\leq 276$   
DPM

Bill  
Goch  
5-1-24





# Deaconess Survey Meter + Probe

STANDARD NUCLEAR CONSULTANTS, INC.  
42W802 Smith Road, Elburn, IL 60119  
630/865-6708 | jim.mikowski@gmail.com  
IEMA LICENSE No. IL-01300-01

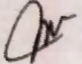
DATE: August 25, 2023

LICENSEE: MEDICAL OUTSOURCING SOLUTIONS

MANUFACTURER: LUDLUM

MODEL 14C, SN-138214

Probe SN-PR-139907

CALIBRATED BY: Jim Mikowski 

## CALIBRATION DATA

Distance (cm)	Scale	Exposure Rate mR/hr	Instrument Reading mR/hr	C.F.	Distance (cm)	Scale	Exposure Rate mR /hr	Instrument Reading mR/hr	C.F.
95.8	x0.1	0.05	0.05	OK	55.3	x0.1	0.15	0.15	OK
30.3	x1.0	0.50	0.5	OK	17.5	x1.0	1.5	1.5	OK
9.6	x10	5.0	5.0	OK	5.5	x10	15.0	15.0	OK
3.0	x100	50.0	50.0	OK	1.7	x100	150.0	150.0	OK
21.5	x1000	500.0	500.0	OK	15.2	x1000	1000.0	1000.0	OK

C.F. = Correction Factor

Comments:

Exposure Rate @ Calibration  
Radionuclide Specified Distance Accuracy  
Cesium-137 3.3 R.cm<sup>2</sup>/h.mCi +/-5%

NIST Traceable Sources

Current Activity: 0.139 mCi  
70.0 mCi

Cal. 01-Apr-07

0.203 mCi, Cs-137

N.A. SCI, VIAL, SN-106528

Cal. 24-Jan-08

100.0 mCi, Cs-137

J.L. Shepherd, Model 773, SN10151

G.M. OPERATIONAL CHECK:  
BEAM/PROBE ANGLE:

3.0 - 6.0 mR/hr @ SIDE SOURCE SURFACE  
PERPENDICULAR

NEXT CALIBRATION DUE: August 2024

RADIATION SAFETY OFFICER:



WIPE ANALYSIS CPM TO DPM CONVERSION TABLE

2-7-24

Facility: Gibson General Hospital

Make: Ludlum 14c

Serial #235157

Gibson General Hospital

*Wipe  
meter  
ON-SITE*

Source	Std CPM	Bkg CPM	Net CPM	Source DPM	Efficiency	1 CPM = ? DPM	Sq. Root Bkg	mda DPM
Ba-133	250000	250	249750	320400	0.78	1.28	15.81	276

CPM	DPM	CPM	DPM	CPM	DPM	CPM	DPM
5	6	205	263	405	519	605	775
10	13	210	269	410	525	610	782
15	19	215	276	415	532	615	788
20	26	220	282	420	538	620	795
25	32	225	288	425	545	625	801
30	38	230	295	430	551	630	807
35	45	235	301	435	557	635	814
40	146	240	308	440	564	640	820
45	58	245	314	445	570	645	827
50	64	250	320	450	577	650	833
55	70	255	327	455	583	655	839
60	77	260	333	460	590	660	846
65	83	265	340	465	596	665	852
70	90	270	346	470	602	670	859
75	96	275	352	475	609	675	865
80	103	280	359	480	615	680	871
85	109	285	365	485	622	685	878
90	115	290	372	490	628	690	884
95	122	295	378	495	634	695	891
100	128	300	384	500	641	700	897
105	135	305	391	505	647	705	904
110	141	310	397	510	654	710	910
115	147	315	404	515	660	715	916
120	154	320	410	520	666	720	923
125	160	325	417	525	673	725	929
130	167	330	423	530	679	730	936
135	173	335	429	535	686	735	942
140	179	340	436	540	692	740	948
145	186	345	442	545	698	745	955
150	192	350	449	550	705	750	961
155	199	355	455	555	711	755	968
160	205	360	461	560	718	760	974
165	211	365	468	565	724	765	980
170	218	370	474	570	731	770	987
175	224	375	481	575	737	775	993
180	231	380	487	580	743	780	1000
185	237	385	493	585	750	785	1006
190	244	390	500	590	756	790	1012
195	250	395	506	595	763	795	1019
200	256	400	513	600	769	800	1025

Ba133	.4898 uci	18.12 KBq	15-Jul-05	1113-69
-------	-----------	-----------	-----------	---------

WIPE ANALYSIS CPM TO DPM CONVERSION TABLE

Feb 26, 2024

Make: Ludlum, Model:14c

Sr.#: 173090 Probe # 44-2 246824

MOS  
Office

Source	Std CPM	Bkg CPM	Net CPM	Source DPM	Efficiency	1 CPM = ? DPM	Sq. Root Bkg	MDA DPM
BA 133	110000	120	109880	380186	0.29	3.46	10.95	186

CPM	DPM	CPM	DPM	CPM	DPM	CPM	DPM
5	17	205	709	405	1400	605	2091
10	35	210	726	410	1417	610	2108
15	52	215	743	415	1434	615	2126
20	69	220	760	420	1452	620	2143
25	86	225	778	425	1469	625	2160
30	104	230	795	430	1486	630	2177
35	121	235	812	435	1503	635	2195
40	138	240	829	440	1521	640	2212
45	156	245	847	445	1538	645	2229
50	173	250	864	450	1555	650	2247
55	190	255	881	455	1573	655	2264
60	207	260	899	460	1590	660	2281
65	225	265	916	465	1607	665	2298
70	242	270	933	470	1624	670	2316
75	259	275	950	475	1642	675	2333
80	276	280	968	480	1659	680	2350
85	294	285	985	485	1676	685	2368
90	311	290	1002	490	1694	690	2385
95	328	295	1020	495	1711	695	2402
100	346	300	1037	500	1728	700	2419
105	363	305	1054	505	1745	705	2437
110	380	310	1071	510	1763	710	2454
115	397	315	1089	515	1780	715	2471
120	415	320	1106	520	1797	720	2488
125	432	325	1123	525	1815	725	2506
130	449	330	1141	530	1832	730	2523
135	467	335	1158	535	1849	735	2540
140	484	340	1175	540	1866	740	2558
145	501	345	1192	545	1884	745	2575
150	518	350	1210	550	1901	750	2592
155	536	355	1227	555	1918	755	2609
160	553	360	1244	560	1935	760	2627
165	570	365	1262	565	1953	765	2644
170	588	370	1279	570	1970	770	2661
175	605	375	1296	575	1987	775	2679
180	622	380	1313	580	2005	780	2696
185	639	385	1331	585	2022	785	2713
190	657	390	1348	590	2039	790	2730
195	674	395	1365	595	2056	795	2748
200	691	400	1382	600	2074	800	2765

BA 133	2220000 DPM	1-Jun-97	GO-92
MDA DPM			



# Weekly Wipe Test Records

Facility: **Gibson General Hospital**

Year: 2024

Wipe test the areas below and analyze the wipe. Subtract the background and convert the NET countrate (cpm) to disintegration per minute (dpm). If the removable contamination is in excess of 2,000 dpm/100 sq.cm., the area must be decontaminated. The records of pre and post decontamination must be recorded.

**Instrument Used:**

- A. Make: Ludlum Model: 14C Sr. #: 25157  
 B. Make: \_\_\_\_\_ Model: \_\_\_\_\_ Sr. #: probe: 226973  
 C. Make: \_\_\_\_\_ Model: \_\_\_\_\_ Sr. #: \_\_\_\_\_

Date	Dose Pre Area		Radio Pharma ceutical Storage Area	Radio Active Waste Storage Area	Work Area	Inject Area	Camera	Treadmill	Meter Used A,B,C	Check Source Reading CPM	Initials
	L Bloc k	Floor									
---	A	B	C	D	E	F	G	H	---	---	---
1/17/24	≤207	≤207	≤207	≤207	≤207	≤207	≤207	≤207	A	42cpm	R
1/22/24	≤207	≤207	≤207	≤207	≤207	≤207	≤207	≤207	A	42cpm	SB
1/29/24	≤207	≤207	≤207	≤207	≤207	≤207	≤207	≤207	A	42cpm	SB
2/5/24	≤207	≤207	≤207	≤207	≤207	≤207	≤207	≤207	A	42cpm	SB
2/12/24	≤207	≤207	≤207	≤207	≤207	≤207	≤207	≤207	A	42cpm	SB
2/19/24	≤276	≤276	≤276	≤276	≤276	≤276	≤276	≤276	A	42cpm	SB
2/26/24	≤276	≤276	≤276	≤276	≤276	≤276	≤276	≤276	A	42cpm	SB
3/4/24	≤276	≤276	≤276	≤276	≤276	≤276	≤276	≤276	A	42cpm	SB
3/11/24	≤276	≤276	≤276	≤276	≤276	≤276	≤276	≤276	A	42cpm	SB
3/18/24	≤276	≤276	≤276	≤276	≤276	≤276	≤276	≤276	A	42cpm	SB
3/25/24	≤276	≤276	≤276	≤276	≤276	≤276	≤276	≤276	A	42cpm	SB
4/1/24	≤274	≤274	≤274	≤274	≤274	≤274	≤274	≤274	A	42cpm	R
4/9/24	≤276	≤276	≤276	≤276	≤276	≤276	≤276	≤276	A	42cpm	SB
4/15/24	≤276	≤276	≤276	≤276	≤276	≤276	≤276	≤276	A	42cpm	SB
4/22/24	≤276	≤276	≤276	≤276	≤276	≤276	≤276	≤276	A	42cpm	SB
4/30/24	≤276	≤276	≤276	≤276	≤276	≤276	≤276	≤276	A	42cpm	SB
DEPT CLOSED OUT						5/1/24					

**No** Activity on-site > 96hrs  
 Sealed sources removed & sent to  
 Radiopharmacy for storage until  
 New license issued.

(Action Level is 2000 dpm/100 sq.cm.)