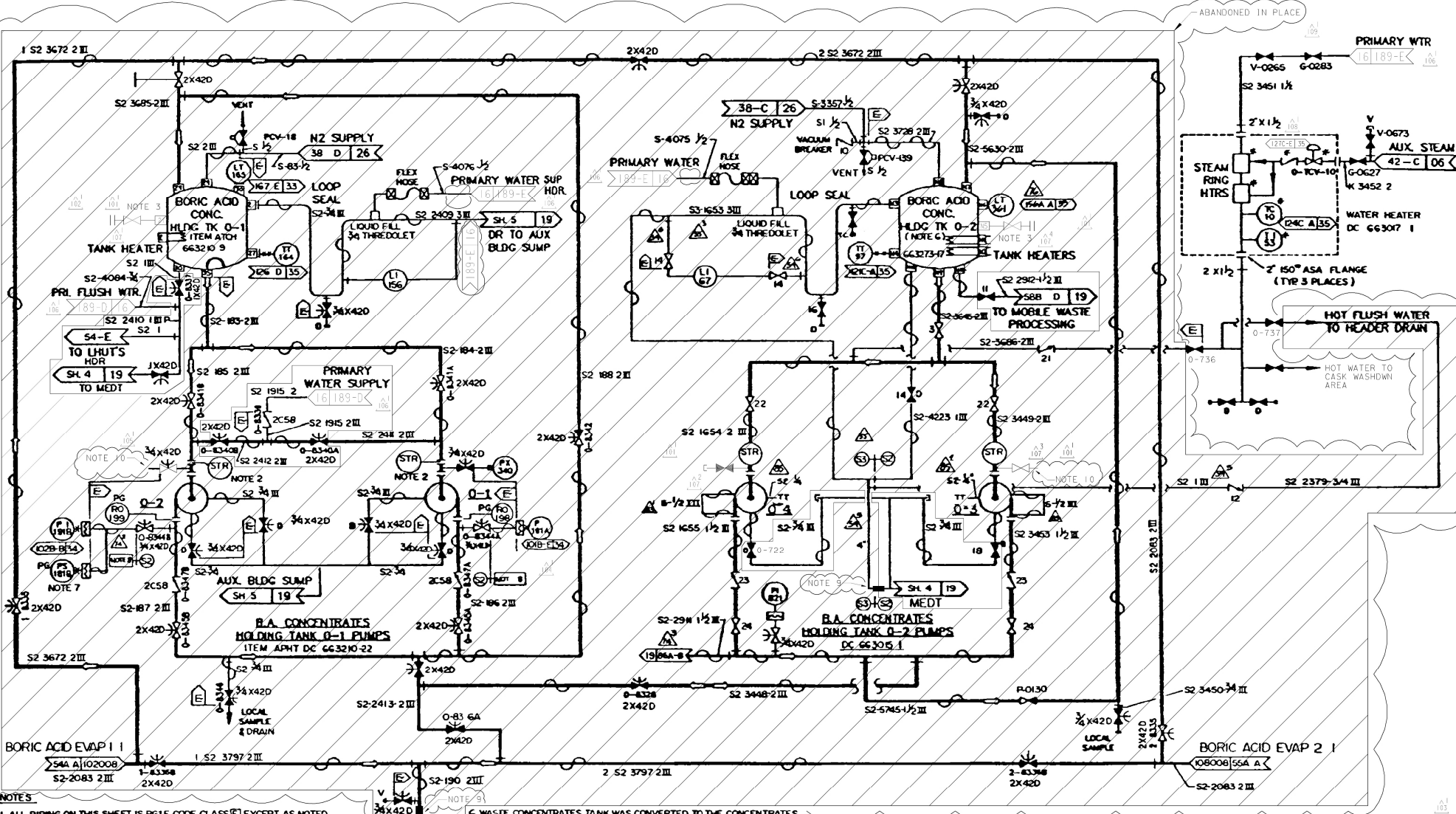


50D 51D 52D 53D 54D 55D 56D 57D 58D 59D



# NOTES

1. ALL PIPING ON THIS SHEET IS PG&E CLASS [E] EXCEPT AS NOTED.
2. STRAINER REQUIRES FLANGE AND SUCTION PIPING FLEXIBLE ENOUGH TO FACILITATE INSTALLATION OF PANCAKE STRAINERS FOR START-UP >51D, 52D C<
3. ISOLATION VALVE AND LT 165 BELOWS TO HAVE PERMANENT/REMOVABLE INSULATION >51D D<
4. VALVES WITH ITEM NUMBERS ARE SPECIFIED ON SPEC. 0722
5. TANK NOZZLE AND VALVE TO HAVE PERMANENT/REMOVABLE INSULATION >56D D<
6. WASTE CONCENTRATES TANK WAS CONVERTED TO THE CONCENTRATES HOLDING TANK 0-2 >56D D<
7. PS-181B ABANDONED IN PLACE PER DC0-SJ-39467 >500 53D B<
8. S2-34 PIPE, SPEC. 8802 >500 53D B<
9. LINES PLUG INSTALLED IN PIPE.
10. THESE VALVE INTENTIONALLY LEFT OPEN & UNCAPPED.

UNIT I

DIABLO CANYON POWER PLANT - PG&E CO.  
CHEMICAL & VOLUME CONTROL SYSTEM

DRAWING	SHEET	PAGE	REV
102008	5D	0	109

DATE	BY	RE	IV	PROFESSIONAL ENGINEER	MECHANICAL	M 16690	3/31/2012	REVISED PER DDN-2*560
04-21-2011	AJF	J	FXC2	KERSI J. DALAL	PE DISC.	PE*	PE EXP.	