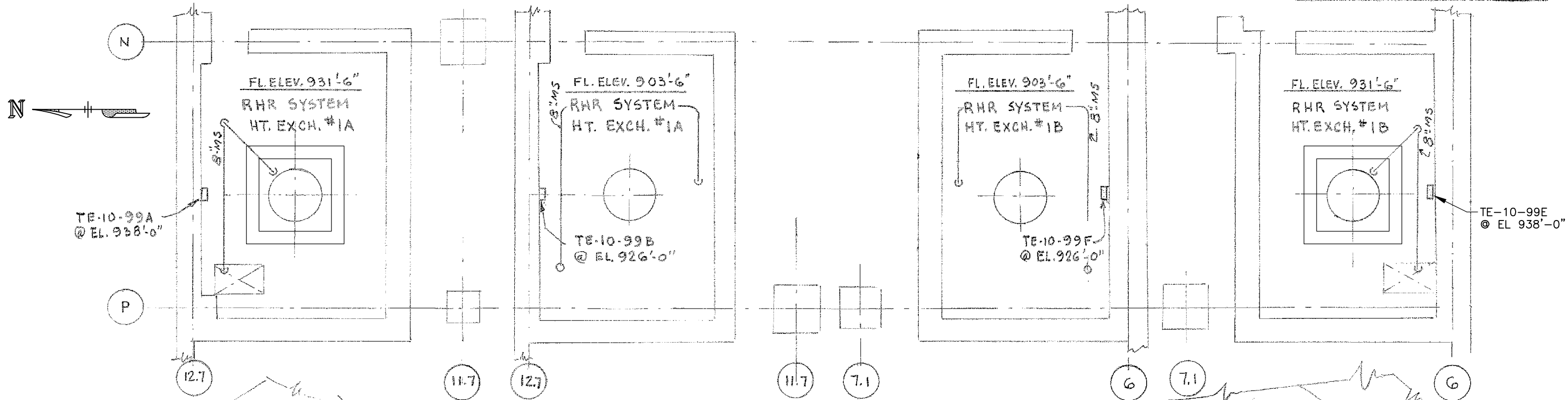


BY: KML DATE: _____
 CHKD. BY: _____ DATE: _____

SUBJECT: NEBRASKA PUBLIC POWER DISTRICT
 COOPER NUCLEAR STATION
 SHEET NO. _____ OF _____
 JOB NO. 2520-02
 INSTALLATION DETAILS - TEMPERATURE DETECTORS FOR NUCLEAR BOILER SYSTEMS LEAK DETECTION

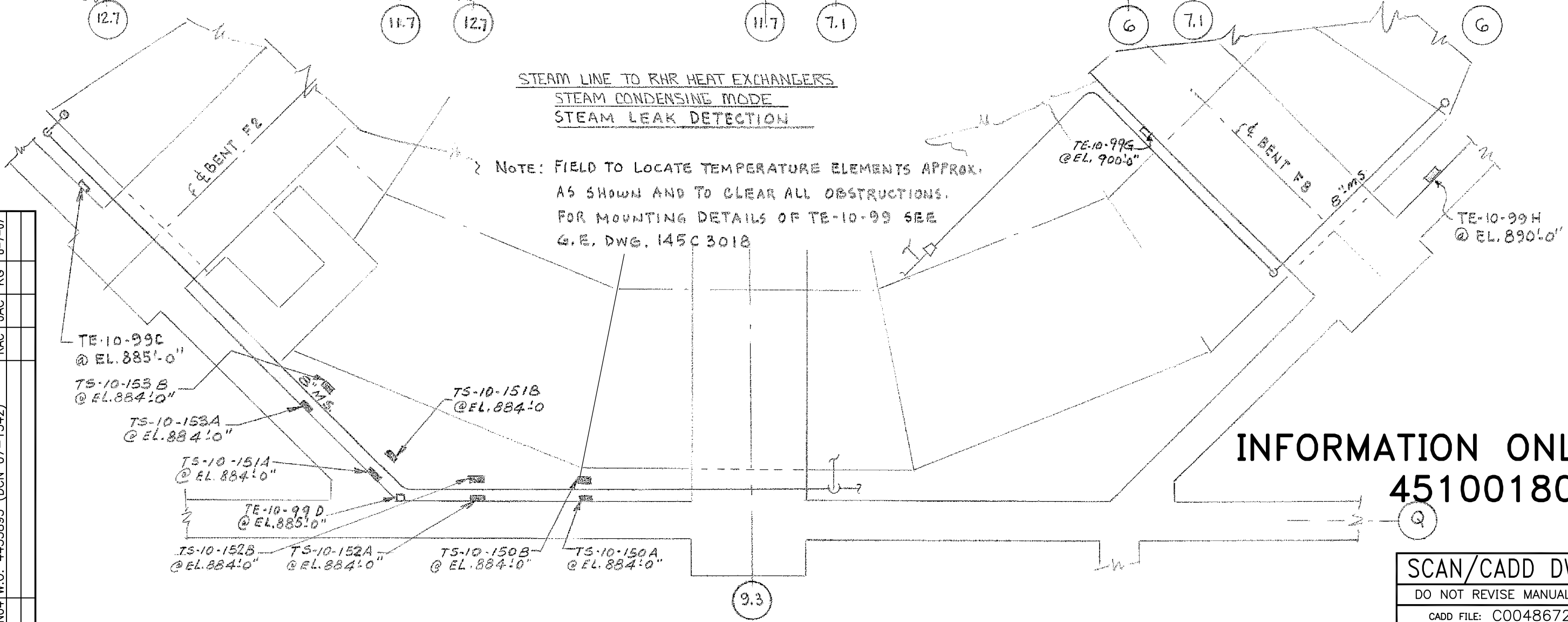
REV. NO. 004

IL-E-70-3 SHT. NO. 107 C
 DWG. NO. I.D.-105 SHEET-4



STEAM LINE TO RHR HEAT EXCHANGERS
 STEAM CONDENSING MODE
 STEAM LEAK DETECTION

NOTE: FIELD TO LOCATE TEMPERATURE ELEMENTS APPROX. AS SHOWN AND TO CLEAR ALL OBSTRUCTIONS. FOR MOUNTING DETAILS OF TE-10-99 SEE G.E. DWG. 145C 3018



INFORMATION ONLY
 451001802

SCAN/CADD DWG
 DO NOT REVISE MANUALLY
 CADD FILE: C0048672

FOR PREVIOUS REVISIONS, SEE SUPERSEDED CARDS.

REVISIONS BY N.P.P.D.			
NO.	REVISIONS	DFT	DATE
N02	CNS PROCEDURE 2.2.61A & NOTIFI-CATION RCR 2003-0241 (DCN 03-0070)	RRT	7-11-03
N03	ICED 6016540 (DCN 04-2886)	RAC	8-26-05
N04	W.O. 4433895 (DCN 07-1342)	RAC	8-7-07