

A

B

C

D

E

F

G

H

J

A

B

C

D

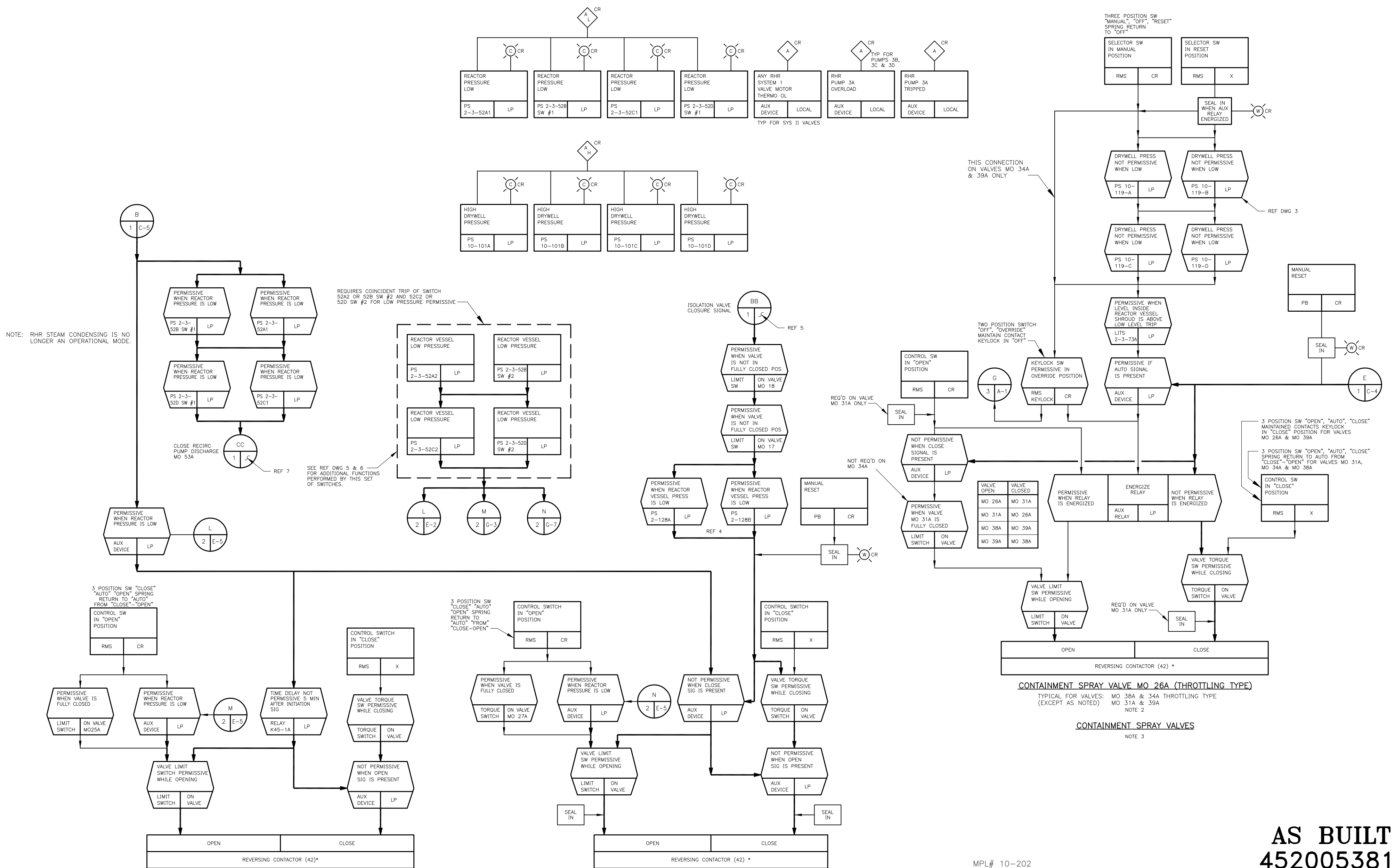
E

F

G

H

J



NOTE: RHR STEAM CONDENSING IS NO LONGER AN OPERATIONAL MODE.

REQUIRES COINCIDENT TRIP OF SWITCH 52A2 OR 52B SW #2 AND 52C2 OR 52D SW #2 FOR LOW PRESSURE PERMISSIVE

SEE REF DWG 5 & 6 FOR ADDITIONAL FUNCTIONS PERFORMED BY THIS SET OF SWITCHES.

RHR OUTBOARD VALVE MO 27A (THROTTLING TYPE)

RHR INBOARD VALVE MO 25A

SYSTEM I

FOR PREVIOUS REVISIONS, SEE SUPERSEDED CARDS.

REVISIONS BY N.P.P.D.					
NO.	REVISIONS	DFT	CKD	APP	DATE
N04	REDWN & REV DCN 96-0114	RAC	JAC	KG	4-20-99
N05	RCR 2001-0506 (DCN 01-0847)	JRN	RHG	KG	2-27-02

\*\* THIS DRAWING GENERATED BY NPPD

SIGNIFICANT NUMBER	1	2	3	4	5	6
GROUP						

COOPER NUCLEAR STATION  
FCD  
RESIDUAL HEAT REMOVAL SYSTEM

DRAWN	DATE	GENERAL ELECTRIC*
RAC	3/15/99	
CHECKED	DATE	730E140BB SH2
APPROVED	DATE	
FILMED	DATE	REVISION
		N05

AS BUILT  
452005381

CADD DRAWING  
DO NOT REVISE MANUALLY

NO.	REVISIONS

NOTES:  
FOR NOTES SEE SHEET 1.

MPL# 10-202

CADD FILE: C0026634