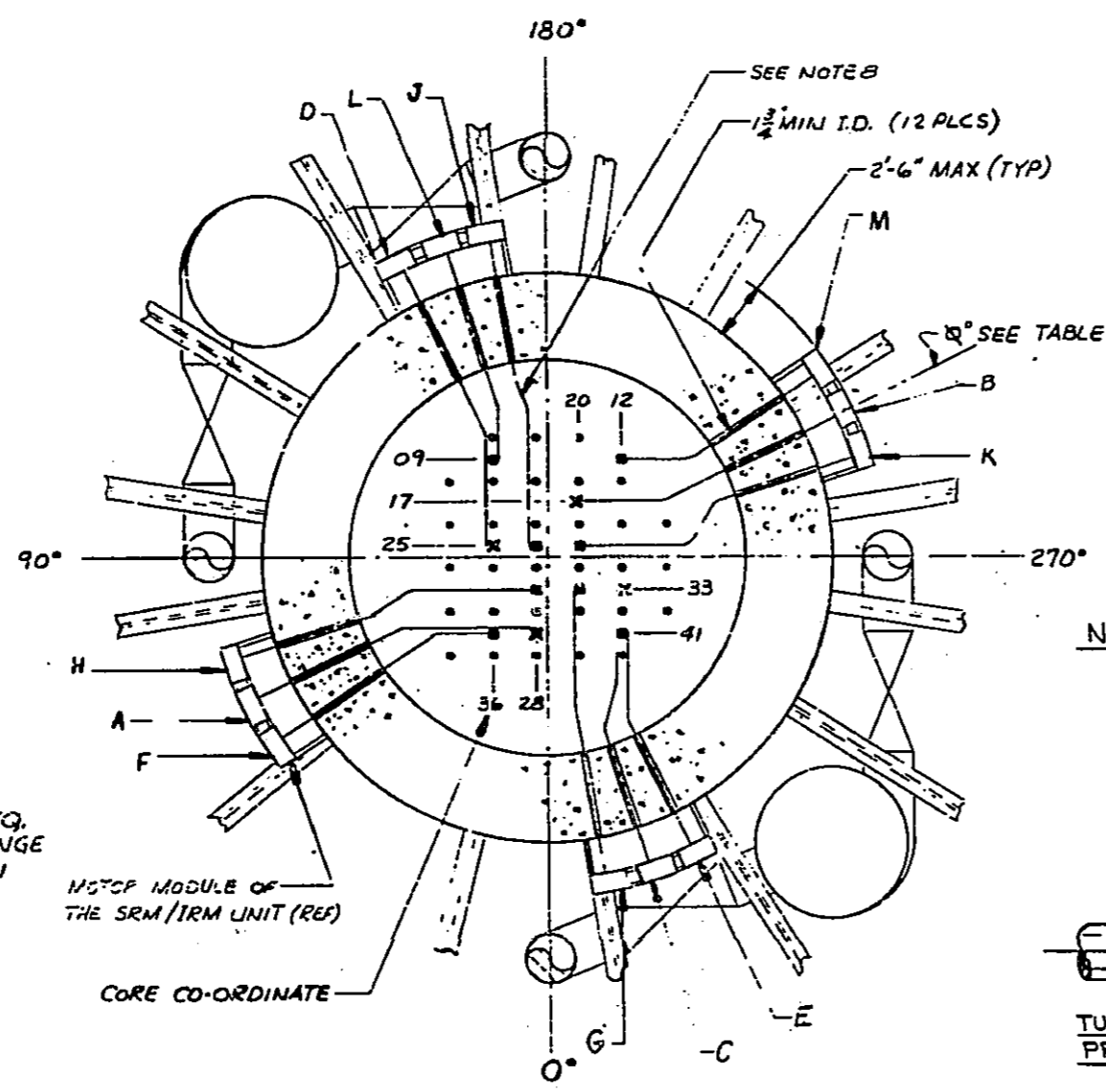
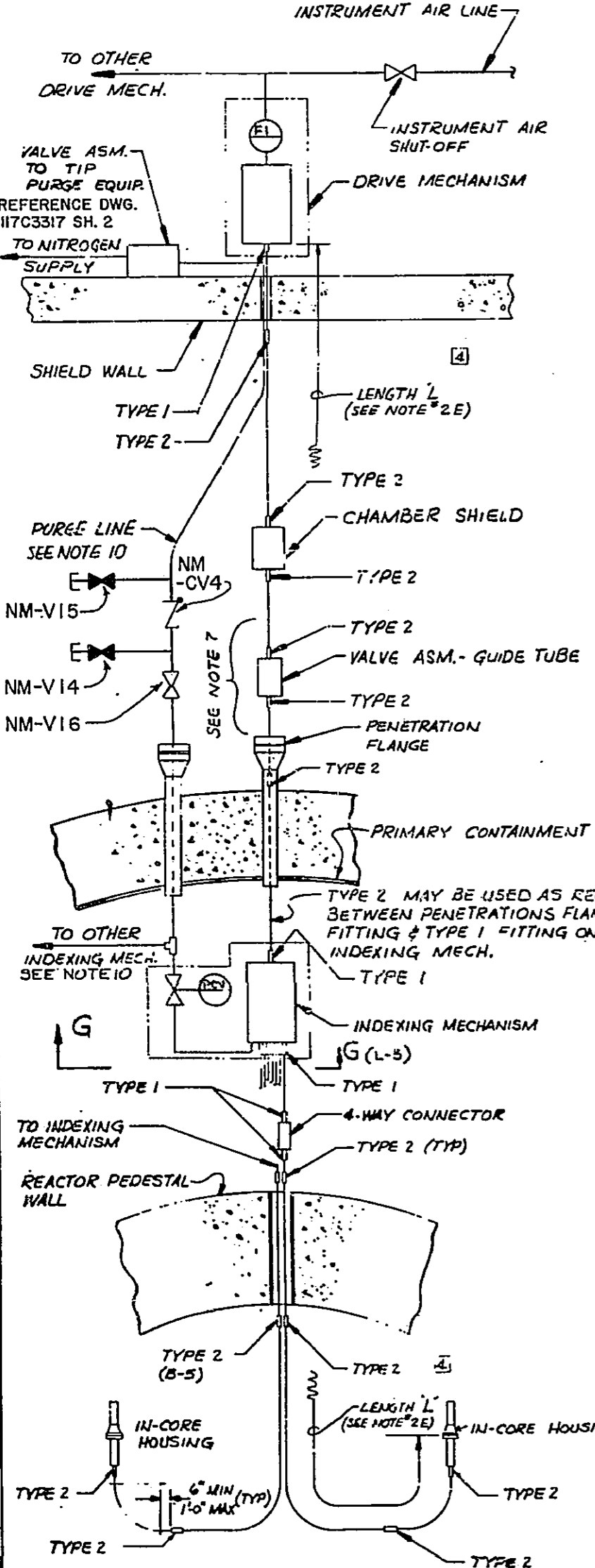
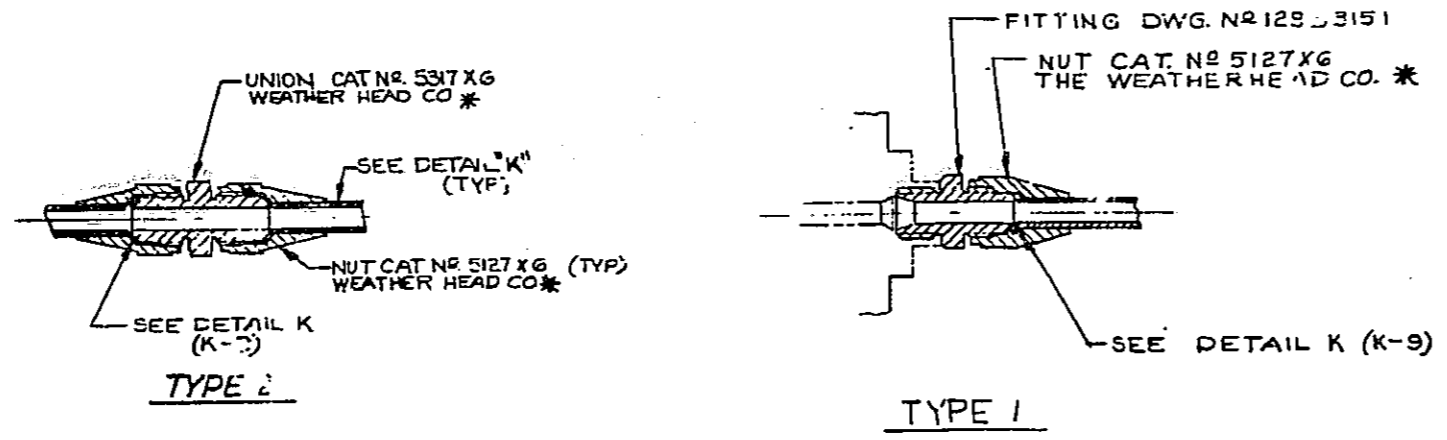


REVISIONS, BY .N.P.P.D.

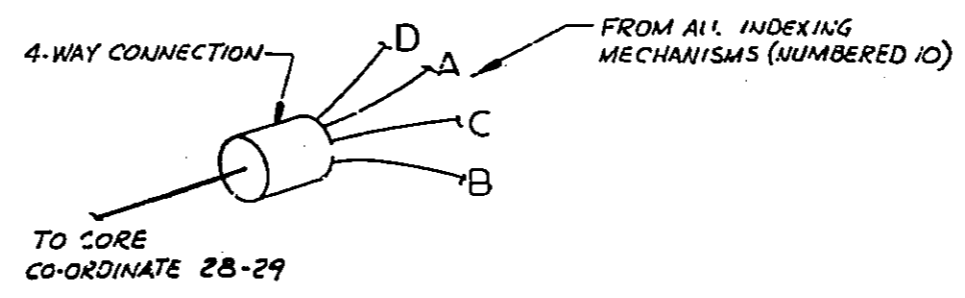
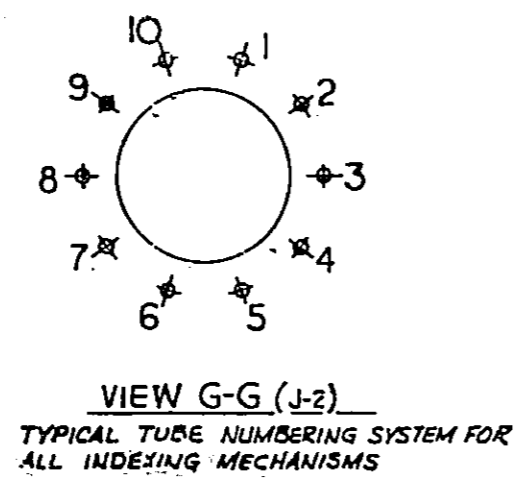
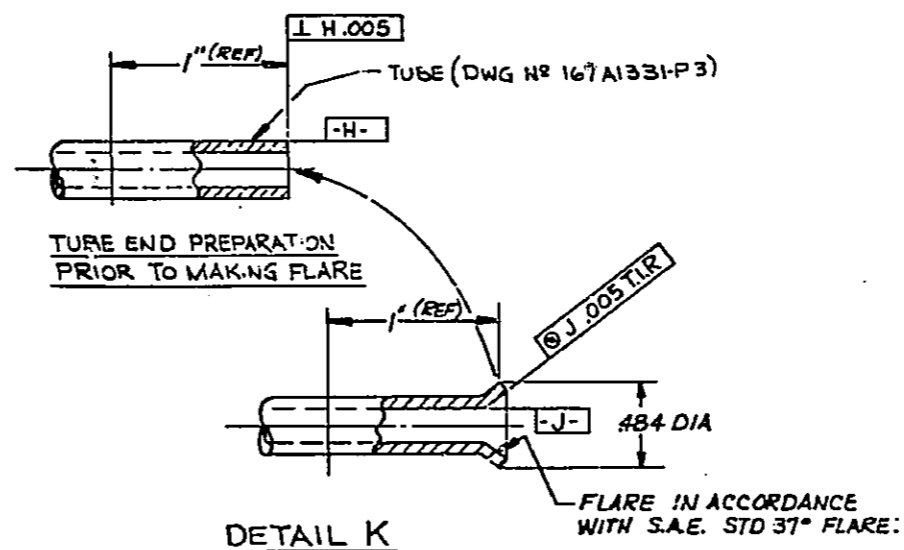
NO.	REVISIONS	DFT	CKD	APP	DATE
NO1	REV. PER DCN C94-1121	LAB	DJF	MHM	9-27-74



MOTOR MODULE #	AZIMUTH θ	CORE CO-ORDINATE	MIN. LENGTH OF FLEX. SHAFT
IRM F	56°	36-41	18'-0"
SRM A	64°	28-41	21'-0"
IRM H	72°	28-33	22'-0"
SRM D	154°	36-25	21'-0"
IRM L	162°	36-09	18'-0"
IRM J	170°	28-25	22'-0"
IRM M	236°	12-09	18'-0"
SRM B	244°	20-17	22'-0"
IRM K	252°	20-25	21'-0"
IRM E	334°	12-41	18'-0"
SRM C	342°	12-33	21'-0"
IRM G	350°	20-33	21'-0"

NOTE:

- INTERMEDIATE RANGE MONITORING SYSTEM (IRM)
- x SOURCE RANGE MONITORING SYSTEM (SRM)
- TRAVERSING IN-CORE PROBE SYSTEM (TIP)



TYPICAL T.I.P. SYSTEM SHOWING EQUIPMENT & FITTINGS REQUIRED FOR EACH TIP TUBE RUN.

4-WAY CONNECTION DIAGRAM

Information Only

Correct status on microfilm

REFERENCE DRAWINGS:

NO.	ITEM NO.	DWG. NO.
1.	DRIVE MECHANISM	7-101
2.	CHAMBER SHIELD	7-106
3.	TIP PURGE EQUIP.	7-113
4.	PENETRATION FLANGE	7-103
5.	INDEXING MECHANISM	7-107
6.	4-WAY CONNECTION	7-108
7.	VALVE ASM. (GUIDE TUBE)	7-104
8.	SRM/IRM UNIT	7-110
9.	REACTOR ASM. (CORE CONFIGURATION)	7-111
10.	TIP	7-121
11.	DUMMY TIP	7-122
12.	GUIDE TUBES	7-112
13.	SOURCE RANGE NEUTRON MONITOR INST.	7-81
14.	DISPOSAL CASK	7-110

452007202

RECEIVED

APR 18 1975

BURNS and ROE HEMPSTEAD

NO.	REV.	DATE	BY	CHKD	APP
1	1	9-27-74	DJF	MHM	
2	2				
3	3				