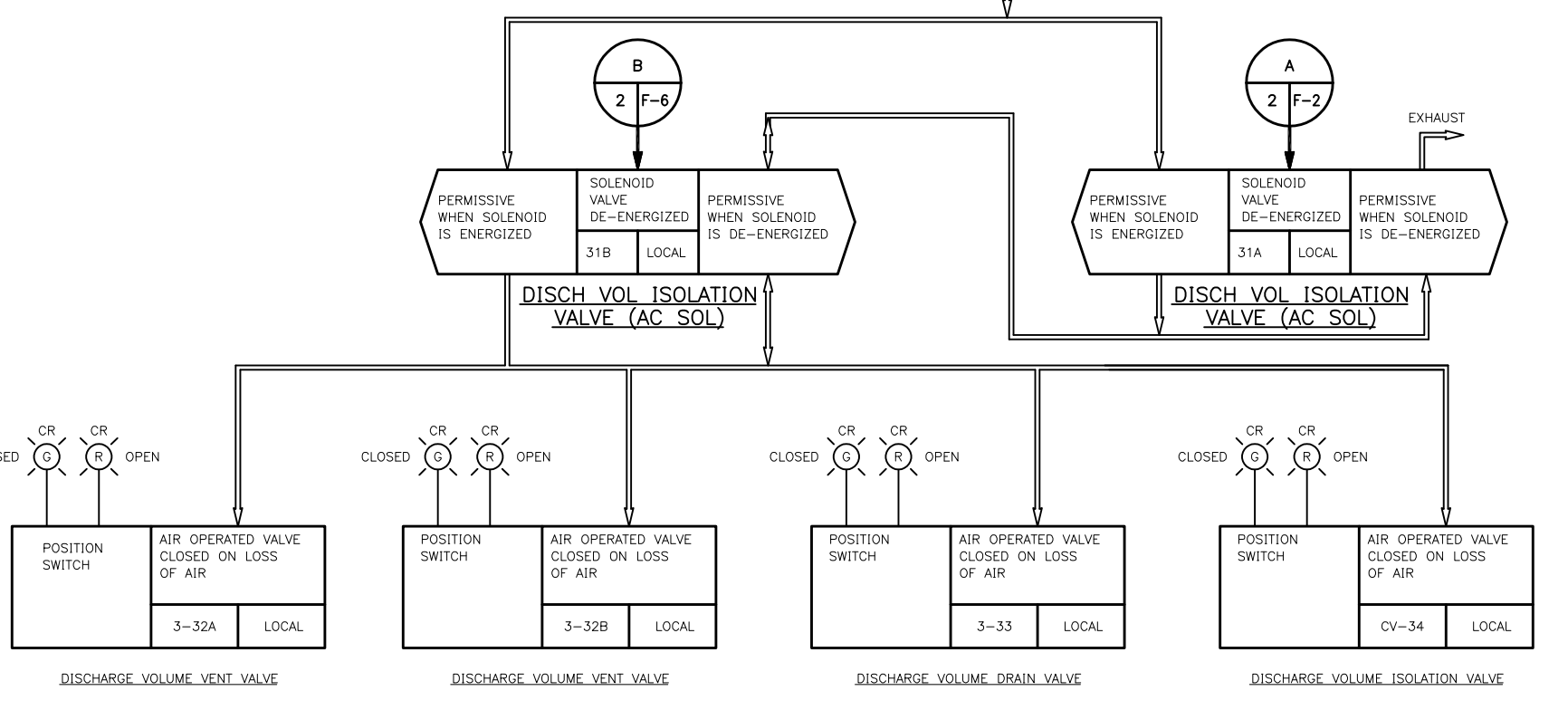
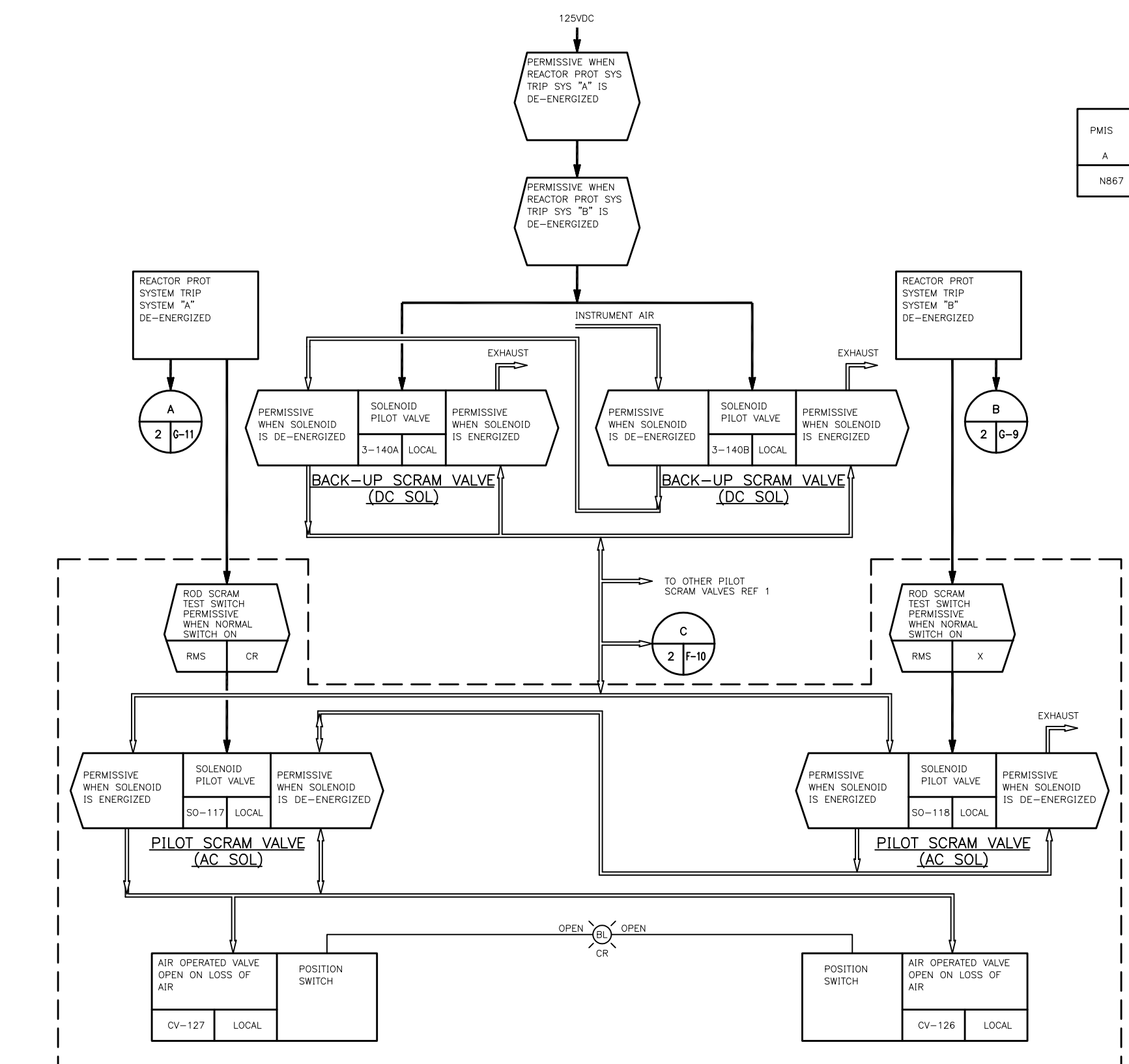
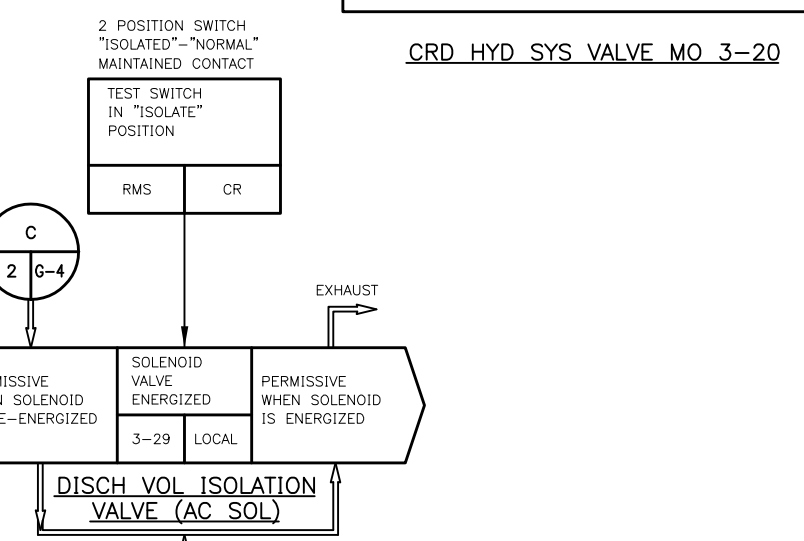
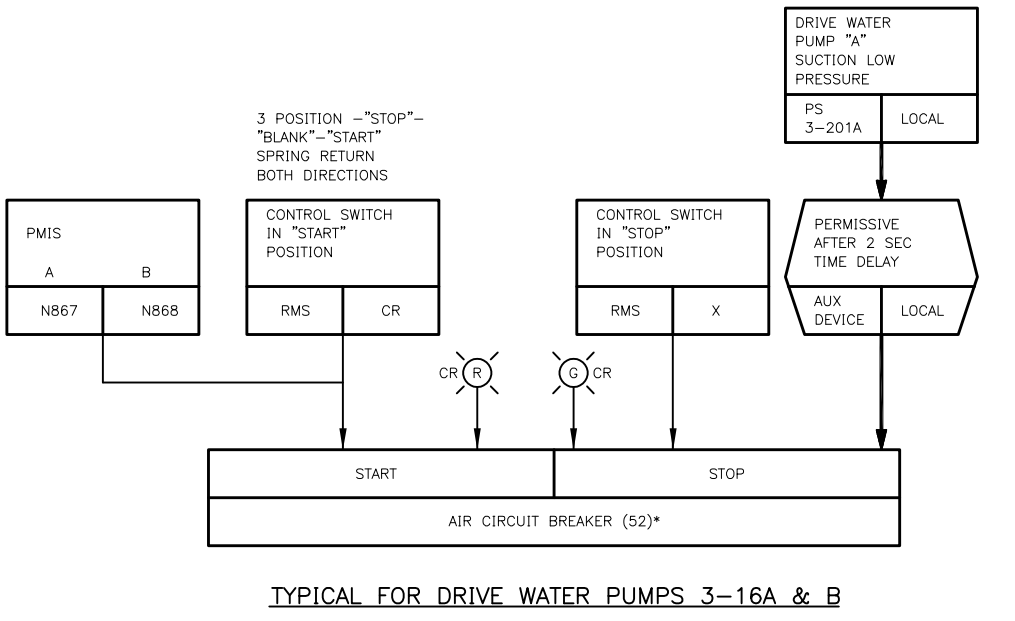
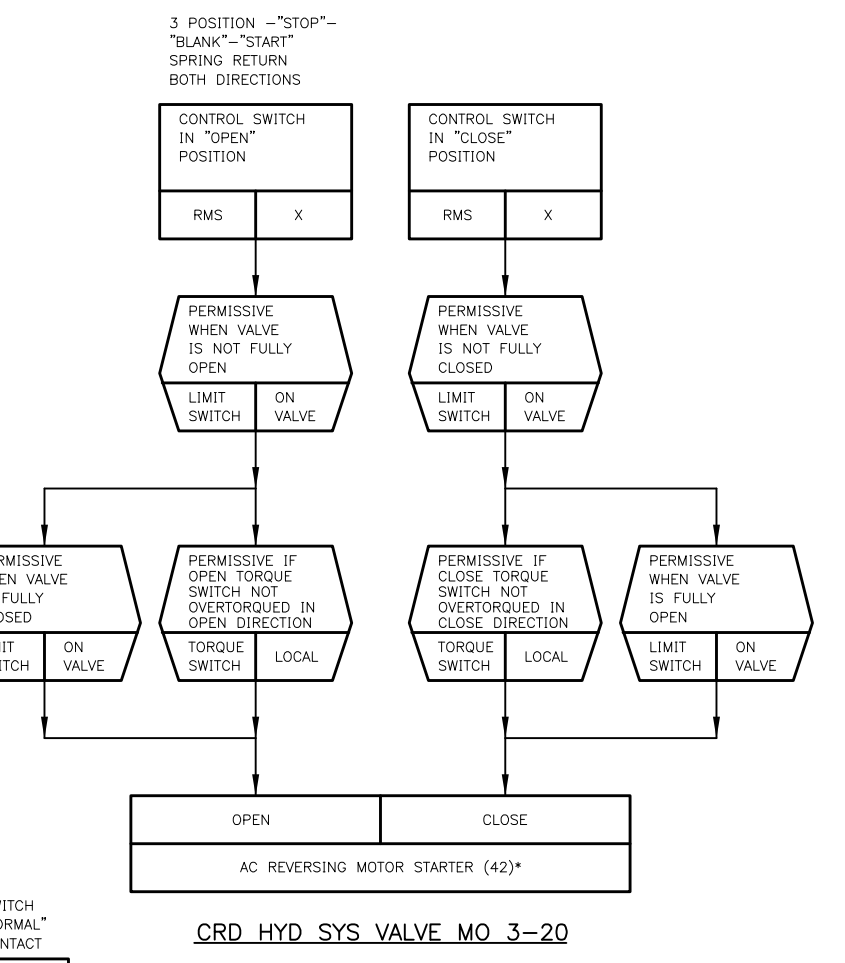
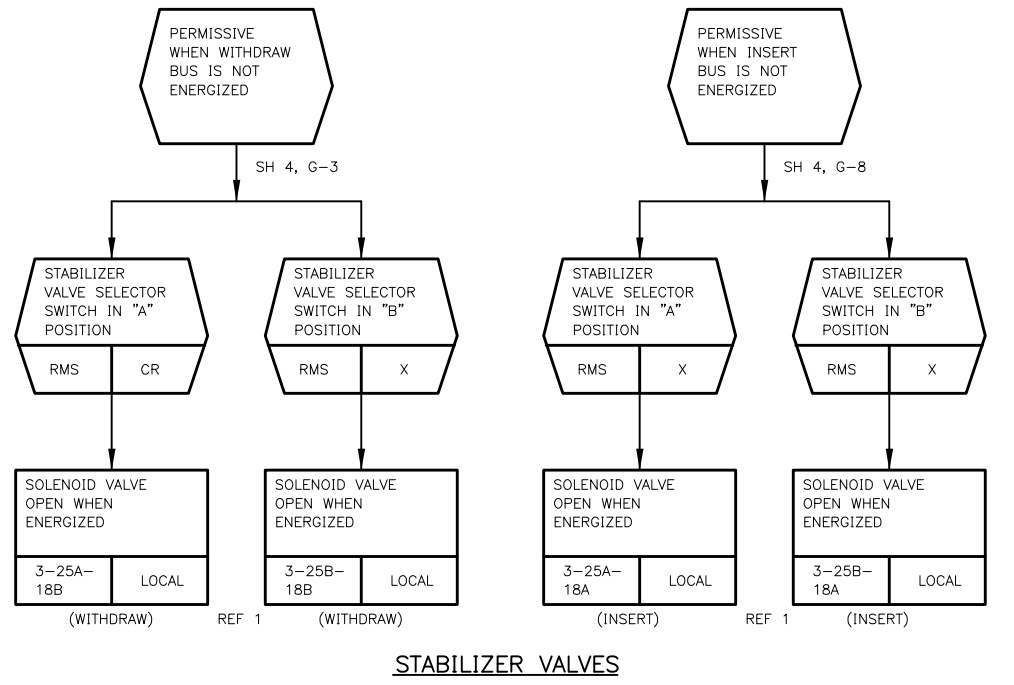
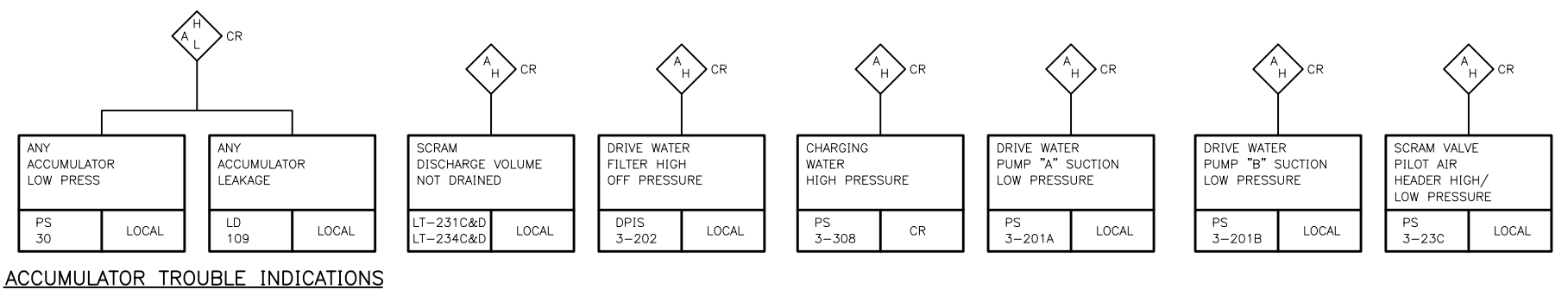
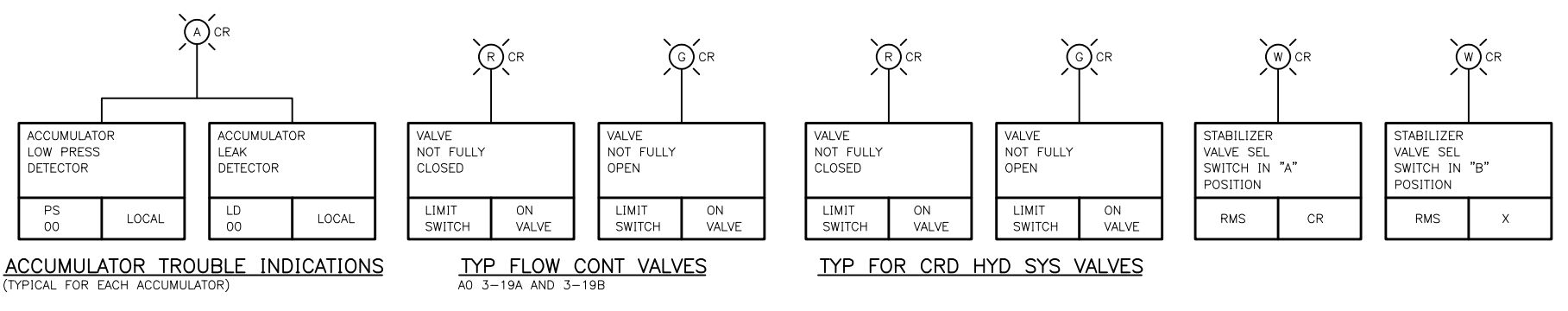


NO. 3		REVISED AND REDRAWN PER APA DCN 093-1815		DR	JAC	AGB	11-23-93
NO.		REVISIONS		DFT	CKD	APP	DATE
DCN REVISIONS BY N.P.P.D.							
** FOR PREVIOUS REVISIONS, SEE SUPERSEDED CARDS.							



NOTES:
1. FOR GENERAL NOTES AND REFERENCE DOCUMENTS SEE SHEET 1.

AS BUILT
452005833

* THIS DRAWING GENERATED BY NPPD

CADD DRAWING
DO NOT REVISE MANUALLY

REVISIONS

NO.	REVISIONS
1	
2	
3	
4	
5	
6	
7	
8	
9	
10	
11	
12	

SIGNIFICANT NUMBER	1	2	3	4	5	6
GROUP						
COOPER NUCLEAR STATION FUNCTIONAL CONTROL DIAGRAM CONTROL ROD DRIVE HYDRAULIC SYSTEM						

DRAWN	DR	DATE	10-29-93
CHECKED	JAC	DATE	11-3-93
APPROVED	AGB	DATE	11-23-93
FILMED	729E471BB SH. 2	REVISION	NO3

GENERAL ELECTRIC*
CADD FILE: CO011081