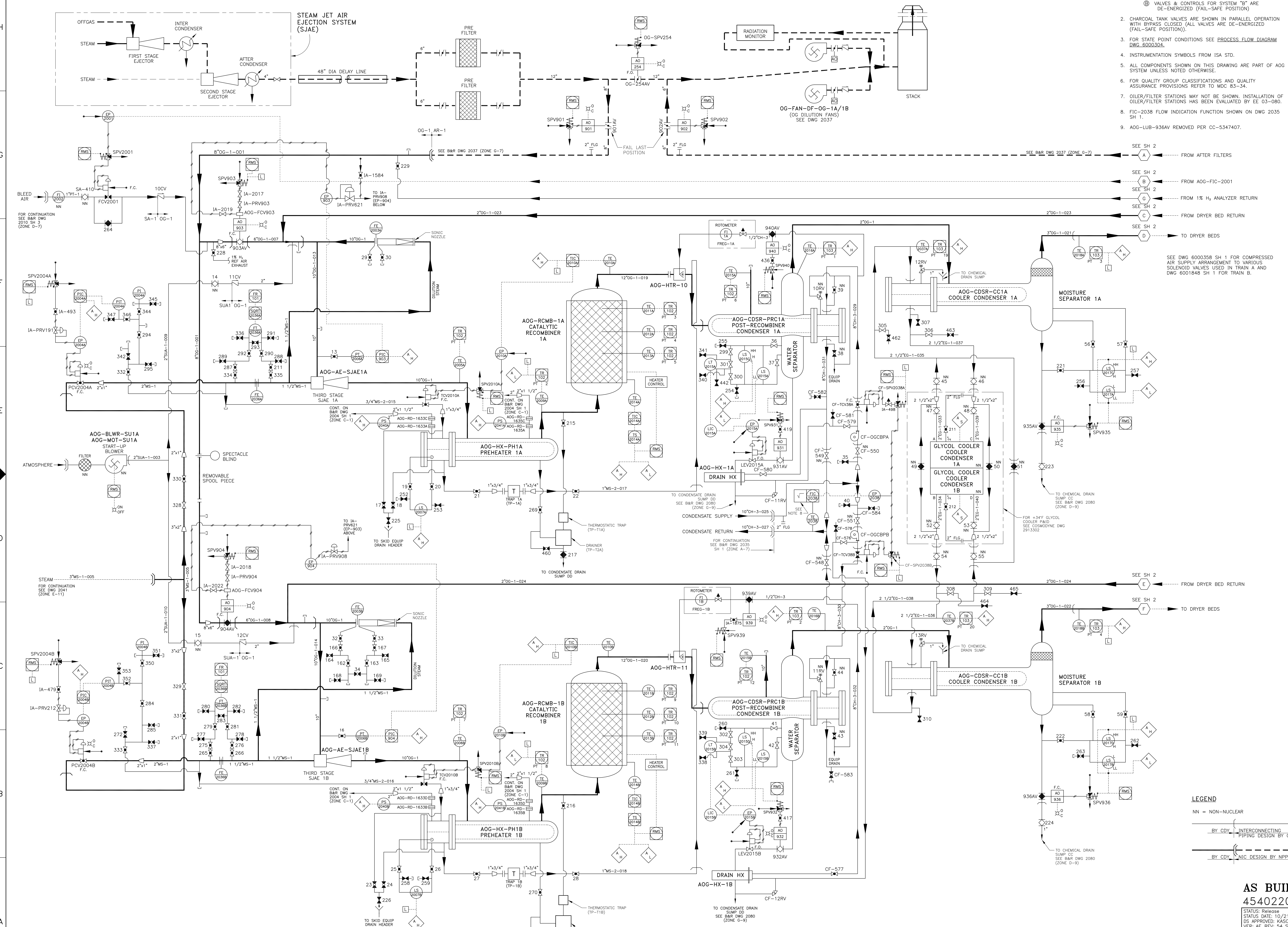


- NOTES:
- OFFGAS SYSTEM SHOWN IN OPERATING CONDITION WITH SYSTEM "A" SELECTED
    - ⊕ VALVES & CONTROLS FOR SYSTEM "A" ARE ENERGIZED.
    - ⊖ VALVES & CONTROLS FOR SYSTEM "B" ARE DE-ENERGIZED (FAIL-SAFE POSITION)
  - CHARCOAL TANK VALVES ARE SHOWN IN PARALLEL OPERATION WITH BYPASS CLOSED (ALL VALVES ARE DE-ENERGIZED (FAIL-SAFE POSITION)).
  - FOR STATE POINT CONDITIONS SEE PROCESS FLOW DIAGRAM DWG 6000304.
  - INSTRUMENTATION SYMBOLS FROM ISA STD.
  - ALL COMPONENTS SHOWN ON THIS DRAWING ARE PART OF AOG SYSTEM UNLESS NOTED OTHERWISE.
  - FOR QUALITY GROUP CLASSIFICATIONS AND QUALITY ASSURANCE PROVISIONS REFER TO MDC 83-54.
  - OILER/FILTER STATIONS MAY NOT BE SHOWN. INSTALLATION OF OILER/FILTER STATIONS HAS BEEN EVALUATED BY EE 03-080.
  - FIC-2038 FLOW INDICATION FUNCTION SHOWN ON DWG 2035 SH 1.
  - AOG-LUB-936AV REMOVED PER CC-5347407.



SEE SH 2 FROM AFTER FILTERS  
 SEE SH 2 FROM AOG-FIC-2001  
 SEE SH 2 FROM 1% H<sub>2</sub> ANALYZER RETURN  
 SEE SH 2 FROM DRYER BED RETURN  
 SEE SH 2 TO DRYER BEDS

SEE DWG 600035B SH 1 FOR COMPRESSED AIR SUPPLY ARRANGEMENT TO VARIOUS SOLENOID VALVES USED IN TRAIN A AND DWG 600184B SH 1 FOR TRAIN B.

TO CHEMICAL DRAIN SUMP  
 TO CHEMICAL DRAIN SUMP CC SEE BAR DWG 2080 (ZONE D-9)  
 FOR +34°F GLYCOL COOLER F&ID SEE COSMOZYNE DWG 2913302

TO CONDENSATE DRAIN SUMP DD SEE BAR DWG 2080 (ZONE G-9)  
 CONDENSATE SUPPLY  
 CONDENSATE RETURN  
 FOR CONTINUATION SEE BAR DWG 2035 SH 1 (ZONE A-7)

TO CONDENSATE DRAIN SUMP DD  
 TO SKID EQUIP DRAIN HEADER  
 TO CONDENSATE DRAIN SUMP DD  
 TO SKID EQUIP DRAIN HEADER

TO CONDENSATE DRAIN SUMP DD  
 TO SKID EQUIP DRAIN HEADER  
 TO CONDENSATE DRAIN SUMP DD  
 TO SKID EQUIP DRAIN HEADER

**LEGEND**  
 NN = NON-NUCLEAR  
 --- BY CDY INTERCONNECTING PIPING DESIGN BY CDY  
 --- BY CDY NIC DESIGN BY NPPD

**AS BUILT**  
 454022076  
 STATUS: Release  
 STATUS DATE: 10/21/2021  
 DS APPROVED: KASCHIZ  
 VER: AF REV: 54 SIZE: E

| VERSIONS/REVISIONS BY NPPD |  |          |      |      | DRAWN DATE |      |
|----------------------------|--|----------|------|------|------------|------|
| NO.                        | DESCRIPTION  | ORDER/DT | DATE | ENG. | CHECKED    | DATE |
| AW/05/09-2014-0008         | 83-0410R1/2/3/4/5 (AS BUILT)   |          |      |      |            |      |
| AW/05/09-2017-0001         | 08B57/7/8 (AS BUILT)   |          |      |      |            |      |
| AW/05/09-2020-0031         | 5347407/05/23/24/25/26/27/28/29/30/31/32/33/34/35/36/37/38/39/40/41/42/43/44/45/46/47/48/49/50/51/52/53/54/55/56/57/58/59/60/61/62/63/64/65/66/67/68/69/70/71/72/73/74/75/76/77/78/79/80/81/82/83/84/85/86/87/88/89/90/91/92/93/94/95/96/97/98/99/100          |          |      |      |            |      |
| AW/05/09-2021-0001         | 08B19/20/21 (AS BUILT)   |          |      |      |            |      |
| AW/05/09-2020-0031         | 5347407/08/19/21/22/23/24/25/26/27/28/29/30/31/32/33/34/35/36/37/38/39/40/41/42/43/44/45/46/47/48/49/50/51/52/53/54/55/56/57/58/59/60/61/62/63/64/65/66/67/68/69/70/71/72/73/74/75/76/77/78/79/80/81/82/83/84/85/86/87/88/89/90/91/92/93/94/95/96/97/98/99/100 |          |      |      |            |      |

|                         |  |  |  |  |  |               |  |
|-------------------------|--|--|--|--|--|---------------|--|
| COOPER NUCLEAR STATION  |  |  |  |  |  | DRAWN DATE    |  |
| P & I DIAGRAM           |  |  |  |  |  | CHECKED DATE  |  |
| AUGMENTED OFFGAS SYSTEM |  |  |  |  |  | APPROVED DATE |  |
| 6000302 SH 1            |  |  |  |  |  | FILMED        |  |
| COSMODYNE               |  |  |  |  |  | DATE          |  |
| 6000302 SH 1            |  |  |  |  |  | DATE          |  |