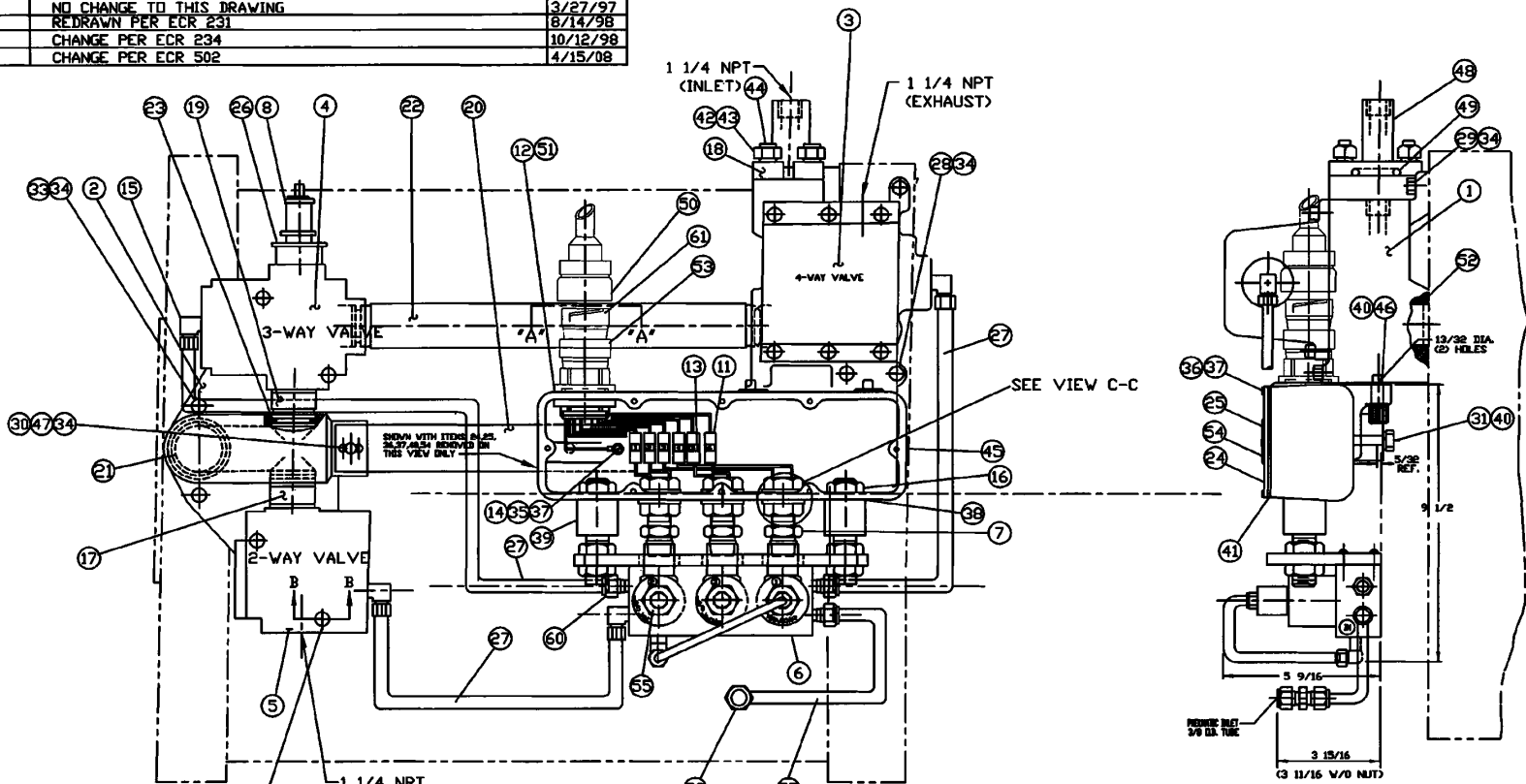


REV	CHANGE DETAIL	DATE
1	ITEM #40 WAS 102-218	1/20/89
2	REDRAWN-MOVED PARTS LIST	4/11/90
3	ADDED SECTION "B-B"	8/9/91
4	ADD TORQUE CHART (ECR# 94)	11/25/92
5	NO CHANGE TO THIS DRAWING	3/27/97
6	REDRAWN PER ECR 231	8/14/98
7	CHANGE PER ECR 234	10/12/98
8	CHANGE PER ECR 502	4/15/08

ITEM No.	TORQUE
16, 28	25 FT.-LBS
29, 30	
31, 33, 46	
32	15 FT.-LBS
42	20 FT.-LBS
35	30 IN.-LBS
36, 59	

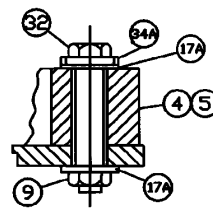


SEE SECT. B-B

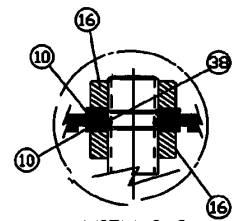


VIEW "A-A"  
RECEPTACLE PIN CONFIG

FUNCTION	SOL.	VALVE	WIRE HOOK-UP	PIN	WIRE	VOLTS
MAIN AC VALVE	1	C	3	D	4	120V 60Hz
EXERCISE VALVE	3	E	5	F	6	120V 60Hz
MAIN DC VALVE	2	A	1	B	2	125VDC
		G		H		NOT USED
		J				



SECT. B-B  
TYP. (4) PLACES



VIEW C-C

**AS BUILT**  
**450249440**

STATUS: Release  
STATUS DATE: 10/21/2014  
DS APPROVED: KASCHIZ  
VER: AB REV: 01 SIZE: A

- NOTES:
1. ALLOWABLE FASTENER TENSION TOL. ±5%.
  2. TORQUE FASTENERS TO NORMAL VALUES LISTED.
  3. TORQUE 4-WAY VALVE RETAINER SCREWS TO 10 FT.-LBS.

VERSIONS/REVISIONS BY N.P.P.D.				
NO.	DESCRIPTION	DFT	DATE	ENG
AB/01	DR-2014-0255	DLR	4/8/14	KASCHIZ

9	941	1-12-12	-	MoB	1-11-12		
8	502	BJS	4/15/08	-	JFM	4/15/08	
7	234	RAC	10/15/98	MACB	10/15/98	NJK	10/15/98
6	231	DB	8/25/98	MACB	24/98	NJK	8/24/98
REV.	ECR	APPROVED	CHECKED	DRAWN			

**RALPH A. HILLER COMPANY**  
6005 ENTERPRISE DRIVE EXPORT PA. 15632

SHEET 4 OF 6      SCALE: N. T. S.  
TITLE: 20 X 5 MSIV ACTUATOR  
DRAWING NUMBER: SA-A085